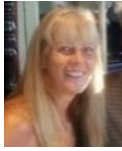


DEPARTMENT 4

VEGETABLES & FIELD CROPS



Superintendent

Lisa Houston - 208-457-1201

Schedule of Events

August 2 – Friday

5 PM Last day to pre-enter online or drop off entry form in Office

August 8 - 9 – Thursday & Friday

2 PM - 7 PM Tags for pre-entered exhibits are available for pick up in the Fair Office

August 15 – Thursday

7 AM - 1 2PM Entry Drop Off (Building 9)

1 PM - 7 PM Entry Drop Off (Building 9)

August 16 – Friday

9 AM Judging begins (building closed)

August 21 – Wednesday

11 AM Veggie Creature Contest

General Rules for Vegetables & Field Crops

- Limit **one** entry per class per exhibitor.
- Entry is free if pre-entered online or by form in the Fair office by 5 PM, August 2. Exhibits registered during entry are subject to a \$1 fee per entry.
- 17 & Under enter youth divisions 04D, 04E, and 04F.
- Only pre-enter classes you know you have an entry for. If you are unsure, please wait and enter when dropping off all entries.
- Superintendents are authorized to dispose of any entry when it becomes unsightly or spoiled.
- Tomatoes – Enter in Department 2 – Fruits, Edible Herbs & Nuts

Special Awards

Green Thumb Gardener Award

Adult and Youth Exhibitor accumulating the most points in the following: Dept. 2- Fruits, Nuts, & Herbs; Dept. 4-Vegetables & Field Crops; and Dept. 5-Flowers will be awarded Green Thumb Gardener. Adult first place wins \$15 and a plaque, second place earns \$10 and a certificate. Youth first place wins \$10 and a plaque, second place earns \$5 and a certificate. Points for ribbons are as follows: Purple: 6 points, Blue: 5 points, Red: 4 points and White: 3 points.

Sponsored by: ***A Little of This & That.***



Super 1 Foods Award

A \$10 **Super 1 Foods** gift certificate and special ribbon will be awarded to the best first place entry in the following classes: Dept. 4-Beans, Beets, Cabbage, Carrots, Corn, Cucumbers, Eggplant, Garlic Bulbs & Allium, Kohlrabi, Onions, Peppers, Potatoes, Pumpkins & Gourds, Rhubarb, Summer Squash, and Winter Squash. Award is judge selected. In sections with only one entry, award will be given at the judge's discretion. **Adult and**

youth entries will be considered for Super 1 Awards. Certificates will be available for pickup during premium payouts.

What the Judges look for with Vegetables & Field Crops

- Quality: In best & prime eating condition, not necessarily the biggest
- Condition: Clean, free from blemishes & disease
- Uniformity: All specimens uniform in size, ripeness, shape & color
- Typical of Variety: Varieties should be identified

VEGETABLES

Division 04A (Adults 18+)

BEANS

- Long, good color, stems on, unwashed, wiped clean.
- Five pods constitute an entry.

CLASS

- 01 Bush beans, any
- 02 Pole beans, any
- 03 Purple beans
- 04 Wax beans
- 05 Green shell beans
- 06 Bean variety not listed, identify

BEETS

- Leave 1" top and tails on, unwashed, wiped clean.
- Five beets constitute an entry.

CLASS

- 07 Table beets
- 08 Cylindra beets
- 09 Beet variety not listed, identify

CABBAGE

- Semi-peeled, solid, disease and damage-free, stem cut off.
- One head constitute an entry.

CLASS

- 10 Early cabbage
- 11 Late cabbage
- 12 Red cabbage
- 13 Oriental cabbage
- 14 Cabbage variety not listed, identify

CARROTS

- Uniform, good color, 1" top, unwashed, wiped clean.
- Three carrots constitute an entry.

CLASS

- 15 Long slender carrots, table variety, over 6"
- 16 Nantus carrots, table variety
- 17 Carrot variety not listed, identify

CORN

- Remove husks, 1/2" stem, do not trim top.
- Three ears constitute an entry.

CLASS

- 18 Yellow corn
- 19 White corn
- 20 Bicolor corn
- 21 Corn variety not listed, identify

CORN STALK

- 1 stalk constitutes an entry.
- Must be in bucket with the root intact.
- You may leave ears intact.

CLASS

- 22 Tallest corn stalk

CUCUMBERS

- Uniform, 1/2" stem.
- Three cucumbers constitute an entry, unless otherwise specified.

CLASS

- 23 Pickling cucumber, greater than 3"
24 Pickling cucumber, between 2-3", five
25 Slicing cucumber, greater than 5"
26 Lemon cucumbers
27 Cucumber variety not listed, identify, one

EGGPLANT

- Wiped clean, 1" stem, stem leaves remain on produce.
- One eggplant constitutes an entry.

CLASS

- 28 Standard eggplant (Black Beauty)
29 Asian eggplant
30 Long purple eggplant
31 Eggplant variety not listed, identify

GARLIC BULBS & OTHER ALLIUM

CLASS

- 32 Soft neck garlic, three heads, dry, roots on, 1" top, peel only to clean
33 Hard neck garlic, three heads, dry, roots on, 1" top, peel only to clean
34 Elephant garlic, three heads, dry, roots on, 1"-2" top, peel only to clean
35 Shallots, five, dry, roots on, 1" top, peel only to clean
36 Allium variety not listed, identify, three

HORSERADISH

- 3 roots constitute an entry.

CLASS

- 37 Horseradish

KOHLRABI

- Spikes not less than 1" or greater than 2".
- Three kohlrabi constitutes an entry.

CLASS

- 38 White kohlrabi
39 Purple kohlrabi
40 Largest kohlrabi

ONIONS

- Uniform, dried, roots on, peel to clean, 2" top.
- Three onions constitute an entry, unless otherwise specified.

CLASS

- 41 Red onions
42 White onions
43 Yellow onions
44 Walla Walla onions
45 Scallions & green (bunching) onions, five with 6" tops
46 Onion variety not listed, identify

PEPPERS

- Uniform, proper color, 1/2" stem.
- Three peppers constitute an entry, unless otherwise specified.

CLASS

- 47 Sweet bell peppers
48 Sweet pepper variety not listed, identify
49 Hot peppers, over 4", identify
50 Hot peppers, under 4", identify, five
51 Banana peppers
52 Anaheim peppers
53 Hungarian wax peppers
54 Pepper variety not listed, identify

POTATOES

- Ten potatoes constitute an entry; display boxes will be furnished by the Fair.
- Potatoes should be uniform in size, with size reflecting variety. Overgrown tubers should not be entered.
- Potatoes shall show variety characteristics, be free from blemishes, sunburn, scab, pits, bruises and, disease.
- Skin must be unbroken, washed clean, and not polished.

CLASS

- 55 Blue potato, any variety
56 Kennebec/Shepody potato
57 Russet potato, e.g., Idaho Russet Netted Gem
58 Norgold/Norkotah potato
59 Pontiac potato
60 Yukon Gold potato
61 Red potato variety not listed, identify
62 White potato variety not listed, identify
63 Fingerling potato, any variety
64 Potato variety not listed, identify

POTATO GIFT PACK

- An individual entry shall consist of three different varieties of four potatoes each, displayed in a basket as a gift.
- Entry shall be judged 40% on container and 60% on quality.

CLASS

- 65 Potato gift pack

PUMPKINS & GOURDS

- Mature, good color, 1" to 2" stem.
- One pumpkin or gourd constitutes an entry.

CLASS

- 66 Pumpkin
67 Petite pumpkin
68 Gourd
69 Petite gourd

RHUBARB

- Exhibit should be pulled, 1" leaf.

CLASS

- 70 Rhubarb, five stalks

SUMMER SQUASH

- Skin penetrable by fingernail, 1" stem.
- One summer squash constitutes an entry.

CLASS

- 71 Crooked neck squash
72 Scallop squash
73 Yellow squash
74 Zucchini, under 10" length
75 Zucchini, over 10" length
76 Zucchini, by weight
77 Other zucchini, identify
78 Summer squash variety not listed, identify

WINTER SQUASH

- Hardened shell, 1 to 2" stem.
- One winter squash constitutes an entry.

CLASS

- 79 Acorn squash
80 Buttercup squash
81 Butternut squash
82 Hubbard squash
83 Spaghetti squash
84 Winter squash variety not listed, identify

MISCELLANEOUS VEGETABLES

CLASS

- 85 Broccoli, one head
- 86 Brussel Sprouts, one stalk any length
- 87 Cauliflower, one head
- 88 Kale, 3 stalks, in water
- 89 Okra, five pods
- 90 Parsnips, 1" top, unwashed, wiped clean, five
- 91 Peas, edible pod (e.g., snow, sugar snap), ten pods
- 92 Peas, non-edible pod, ten pods
- 93 Radishes, red, 1" top, unwashed, wiped clean, five
- 94 Radishes, white, 1" top, unwashed, wiped clean, five
- 95 Swiss chard, five stalks
- 96 Turnips, 1" top, unwashed, wiped clean, five
- 97 Miscellaneous vegetable variety not listed, identify, one

VEGETABLE COMBINATIONS

- Entry consists of your choice of five varieties of vegetables. Tomatoes may be used.
- List varieties on entry tag and display in your own non-breakable container.
- Presentation: 70%

CLASS

- 98 Salad bowl
- 99 Vegetable soup
- 100 Stir fry favorites

VEGETABLE ODDITIES

CLASS

- 101 Vegetable oddity, one sample

LARGEST VEGETABLE

CLASS

- 102 Largest vegetable, by girth

FIELD CROPS

Division 04B (Adults 18+)

HAY

- A tied flake of hay constitutes an entry.

CLASS

- 103 Alfalfa hay
- 104 Alfalfa and grass hay
- 105 Grass hay
- 106 Oat hay
- 107 Hay other than listed, identify

GRAINS & HOPS

- One sheaf of mature, unharvested grain constitutes an entry.
- Entry must be neatly bound in 3 places with white string only.
- Compact, minimum of 3" in diameter below the heads.

CLASS

- 108 Wheat, any, identify variety, not less than 28" in length
- 109 Barley, any, identify variety, not less than 24" in length
- 110 Oats, any, identify variety, not less than 28" in length
- 111 Hops, any, identify variety, min length of vine 5" with leaves and cones
- 112 Grain other than listed, identify variety, not less than 28" in length

2024 SPECIAL CONTESTS

Division 04C (Adults)

Division 04D (Ages 7 & Under)

Division 04E (Ages 8-12)

Division 04F (Ages 13-17)

VEGGIE CREATURE CONTEST

Rules: All materials used must be a form of a fruit, vegetables, or field crop. Use of toothpicks to hold creature together is allowed. No glues or other adhesives. This is a People's Choice Award.

CLASS

- 113 Veggie Creature Contest

YOUTH VEGETABLES

Division 04D (Ages 7 & Under)

Division 04E (Ages 8-12)

Division 04F (Ages 13-17)

See adult classes for how many vegetables constitute an entry.

CLASS

- 114 Beans
- 115 Beets
- 116 Cabbage
- 117 Carrots
- 118 Corn
- 119 Pickling cucumbers
- 120 Eggplant
- 121 Garlic
- 122 Onions
- 123 Sweet peppers
- 124 Hot Peppers
- 125 Potatoes
- 126 Pumpkins
- 127 Gourds
- 128 Rhubarb
- 129 Squash
- 130 Zucchini
- 131 Broccoli
- 132 Peas
- 133 Turnips
- 134 Vegetable, other than listed
- 135 Vegetable Soup Bowl
- 136 Stir Fry Bowl
- 137 Largest Vegetable, by girth



JOIN US FOR THE YOUTH STOCK SALE



SATURDAY, AUGUST 24 9 AM