



VISITOR GUIDE 2023

KANSAS STATE FAIR



GET FAIRIFIED

SEPT. 8-17 | HUTCHINSON, KS



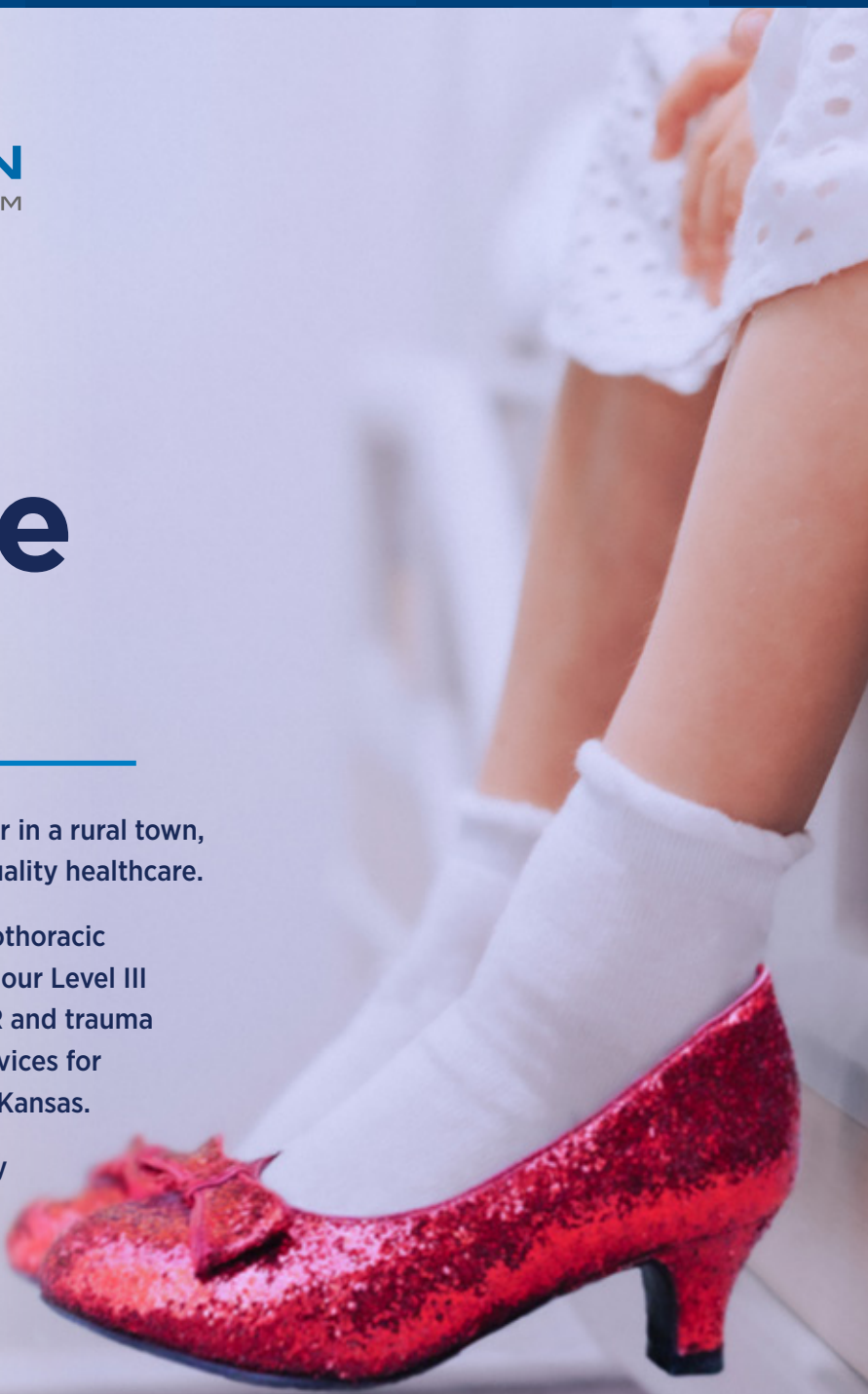
HUTCHINSON
REGIONAL HEALTHCARE SYSTEM

A Kansas Healthcare Leader.

Whether you live in a city or suburb, on a farm, or in a rural town, you and your family deserve to have access to quality healthcare.

Our expertise in areas such as cancer care, cardiothoracic surgery, pulmonology, mental health, along with our Level III Emergency Department, treating over 23,000 ER and trauma patients a year, makes us a hub of healthcare services for patients and families across central and western Kansas.

As a not-for-profit healthcare system, community is our why. From newborns to older adults, our team is here for you, in sickness and in health.



620.665.2000 | hutchregional.com

Our family of care includes:

Hutchinson Regional
Medical Center

Hutchinson Regional
Medical Foundation

Horizons Mental
Health Center

Hospice & HomeCare
of Reno County

Health-E-Quip

TABLE *of* CONTENTS

5	Fairified Upgrades
7	Gate Admission
8	The Midway
9	Education
10	Competitive Events
12	Livestock
14	Concerts & Free Stage
16	Fairgrounds Map
18	Special Attractions
19	Day Sponsors
20	Sponsors
22	Full Schedule

MESSAGE FROM THE GOVERNOR

Welcome to the 2023 Kansas State Fair!

As you enter the fairgrounds, know that you are taking part in one of my favorite Kansas traditions. Each year, visitors from around the world come to Hutchinson to celebrate the culture and history of our great state. Whether that means taste-testing 50-year-old family recipes, cheering on the All-Star Monster Truck Tour, or taking a trip on the Skyride overlooking the Fairgrounds, the State Fair showcases why it's so fun to be a Kansan.

The Fair also reflects our state's history of entrepreneurship and resilience. It began 150 years ago with a group of businesspeople who organized the Reno County Agricultural Society. Despite a swarm of angry grasshoppers interrupting activities the next year, organizers persisted and gradually expanded the Fair into the modern version we know and love.

The Fair continues to evolve to this day. In 2019, one of the first bills I signed as governor authorized the State Fair Board to establish a nonprofit corporation to fundraise to expand the fair's offerings. Last year, the State invested nearly \$15 million to restore the Bison Arena, revamp the Expo Center, and provide air conditioning in

the 4-H Centennial Hall and Oz Gallery. And under the leadership of the State Fair Board and General Manager Bryan Schulz, the State Fair continues to increase attendance, draw new and exciting attractions, and bring together Kansans and visitors to our state like never before.

My administration will continue to support efforts to grow the Fair in the coming years as an important Kansas tourist attraction, symbol of our agricultural sector's strength, and driver of the local economy.

No matter what brings you to the Fair, I hope you all enjoy your time here and create memories that will last a lifetime. I especially want to thank everyone who makes this valuable attraction possible year in and year out. Your hard work is why more Kansans gather at the State Fair than anywhere else. You make our state proud.



Laura Kelly

LAURA KELLY
Governor of Kansas

MESSAGE FROM THE PRESIDENT

Hello Friends! We are so glad you are learning more about this great "Home on the Range".

Since 1913, the Kansas State Fair has been a "fun for all" with SO MANY wonderful experiences! No matter what your background, there is something here for you! In 2023 you will find so many NEW and EXCITING things happening on the fairgrounds including the Renovated Capper Building, the NEW Fire Station, NEW projects to view showcasing present GENERATIONS of great people!

As you travel down the paths you will see the fair team has been working

hard on continuous updating and cleaning of the entire grounds!

Not sure of where to start? Flip through the pages and see all that these September days have to offer! Thanks for joining us in celebrating all things Kansas!



Paula Landoll-Smith

PAULA LANDOLL-SMITH
President of the Board
Kansas State Fair



GET FAIRIFIED at the KANSAS STATE FAIR

How do you know when you're a true Kansan? When you're a bona fide, certified member of the Sunflower State? You get **fairified**, of course!

Fairification is easy. All it takes is one trip to the Kansas State Fair, and you're in! **Fairified** members get all sorts of perks, like delicious food, interesting exhibits, concerts, carnival rides, and much more!



TRUCK BODIES



REACH FOR THE PEAK

A HIGHER STANDARD IN TOOL STORAGE

DRAWER PACK

- ▶ Aluminum Construction
- ▶ Single-action latch assembly with lock & key
- ▶ 600 lbs capacity per drawer
- ▶ Lock-in/lock-out drawer slides

BOLT BIN

- ▶ Aluminum Construction
- ▶ Pull style handles
- ▶ Removable Door Enclosure

QUICK 2 WEEK LEAD TIME ON DRAWER SYSTEM ORDERS

ELEVATE CRANE PERFORMANCE

Summit's line of electric and hydraulic telescopic service cranes lifting capacities range from 4,000 lbs. to 14,000 lbs. with a maximum reach of 29 ft. Designed with strength, durability, and safety, Summit cranes can meet the demands of heavy-duty applications.



CONTACT SUMMIT PARTS FOR MORE INFO **888-402-8104**
OR VISIT **SUMMITBODIES.COM**



MATTRESSFIRM

READY FOR A BREAK?

Visit our Sleep Experts™ at
the Mattress Firm booth.



metallandsoulks.com • 620-663-9353

CUSTOM METAL
PROJECTS LARGE OR
SMALL SINCE 1955



Get all of your friends close to the stage at the Nex-Tech
Grandstand on the Metal & Soul VIP Patio with

YOUR OWN TABLE HANDCRAFTED BY METAL & SOUL

Contact the KSF Ticket Office to reserve yours today!



FAIRIFIED FRESH UPGRADES

The Kansas State Fair, with assistance from the Kansas Legislature and our great Corporate Sponsors, has been doing a large amount of upgrades to the Fairgrounds over the past year. These upgrades will continue throughout the rest of 2023 and into 2024.

ROAD REFRESH

With the over 550 events that go on at the Fair each year, the traffic plays a huge role in the wear and tear of our asphalt. With the State's assistance, we were able to secure funding to do a complete overlay of all our asphalt areas. This project will happen prior to and after the 2023 Kansas State Fair, for your convenience.

SAFETY FIRST

A permanent Public Address system has been installed for your safety. Other measures that are in the works for 2023 and 2024 are upgrades in lighting and cameras.

HOUSE OF CAPPER

Other beautification projects on the grounds include the newly rebuilt House of Capper and Coop Park. This is a tribute to former Governor and Senator Arthur Capper.

KEEPIN' IT COOL

With all of the extreme weather fluctuations that happen during the Kansas State Fair, we want to make sure that our guests and volunteers have a cool space.

This year the Oz Gallery will be an air-conditioned space. Check out fine arts, school arts, Boy Scouts and Girl Scouts as well as the Explore Kansas Festival the last weekend of the Fair.

LIGHTS ON!

Make sure that you stick around after dark to check out all of the beautiful tree light scaping that has been done in Gottschalk Park, Administration Park, North of the Administration Building, around the Lair White House, and throughout the Lowen Corporation Free Stage located at Lake Talbott.

You won't want to miss it!

REDOING THE LOO

Restrooms on the grounds have always been an area that have needed updating. This year we have updated the restrooms in the Expo Center, and the Grandstand. Over the next couple of years, we will continue to upgrade all of the restroom facilities.

BISON ARENA

One very large project will be the renovation of the Bison Arena. Plans are in the works to renovate this iconic facility into an Ag Innovation Center that will tell the story of Agriculture in Kansas. Look for more updates to come.

Thank you to all of our Sponsors and the Kansas State Legislature for all their contributions to making the Kansas State Fair a fantastic place for all our guests!

NEW IN 2023

NEW SPECIAL EVENTS

Kids Lip Sync and the Husband Calling Contest. See schedule for details.

Monday, Sept. 11 will be a special-priced unlimited ride Wristband Day to celebrate Dillons Dollar Day. This replaces the one-ticket-per-ride promotion from previous years. Midway ride tickets will also be accepted Monday, Sept. 11 as posted, which is typically 3-5 tickets per ride.

STUFF YOU SHOULD KNOW!



TRANSPORTATION RENTALS

Wheelchair, stroller, and mobility carts are available for rent south of Gate 5 and west of Gate 9. For more info and reservations call Scootaround Mobility Rentals at 1-888-441-7575.

TRAMS

See Fair map (page 17) for tram stop locations. Sponsored by Evergy and Kansas Department for Aging and Disability Services.



ELECTRIC CAR CHARGING

The nearest charging stations are located at the Hutchinson Regional Medical Center and Strataca Salt Museum.



MERCHANDISE

State Fair merchandise is sold at the Kansas Fairgrounds Foundation booth near the fountain across from Ye Old Mill.



ADA ACCESSIBLE PARKING

There are three areas available in the public parking lots: Gate 5, south of State Fair Rd.; Gate 8, corner of 23rd Ave. and Plum St.; Gate 9, corner of E. 20th Ave. and Plum St.



NURSING MOTHERS ROOMS

Rooms that offer privacy and a quiet atmosphere for nursing are located in the Encampment Building and at Cottonwood Court in the Women's Restroom.



FIRST AID

Located at the west end of the Administration Building.




AEDS

AED Defibrillators are located throughout the Fairgrounds. Thanks to our Partner: Blue Cross Blue Shield of Kansas Foundation. SEE MAP FOR LOCATIONS.



LOST & FOUND

The Lost and Found is located at the west end of the Administration Building (620) 669-3637.




Reviving Mobility. Redefining Possibilities.

With over 30 years of combined experience, the multidisciplinary team at SpineMed Specialists takes a collaborative approach to provide compassionate care and effective treatment options. We understand that patients play an integral role in the decision-making process, and we work diligently with primary care and referring physicians to ensure continuity of care. Our commitment to innovation and personalized treatment has resulted in positive outcomes for tens of thousands of patients suffering from debilitating back and neck pain.

Seeing patients in Hutchinson.

 (316) 733-9393  [spinemedspecialists.com](https://www.spinemedspecialists.com)

 825 North Hillside, Wichita, Kansas 67214



**Thomas
Frimpong, DO**
NeuroSpine



FAIRIFIED FACTS

◆ GATE ADMISSION ◆

TYPE	BEFORE SEPT. 8	SEPT. 8-17
Adult (age 13+)	\$7	\$10
Child (age 6-12)	\$4	\$6
Senior (age 60+)	\$4	\$6
Military w/ ID	\$4	\$4

Purchase your Kansas State Fair tickets before Sept. 8 for discount gate admission! Ticket outlets include the Kansas State Fair ticket office at 2000 N. Poplar, online, or any Kansas Dillons store. Military tickets can be purchased at the Fair gates.

SEASON PASS

\$50 (\$100 value)

- ◆ 10 gate admission scans on a badge
- ◆ Can be used one per day, all at once, or in any increment



SAVE on GATE ADMISSION!

Check page 19 for more information on Sponsor days



FRIDAY, SEPT. 8
\$2 for 55 and older

**TUES, SEPT. 12 &
THURS. 14**
\$4 after 4 P.M.

EVERY DAY
\$5 after 9 P.M.



MONDAY, SEPT. 11
\$1 or free w/ Dillons Plus



FRIDAY, SEPT. 15
\$2 for PlayOn members

For information on our kids, family, seniors and couples packages and season passes, call 620-669-3618 or visit kansasstatefair.com and click on Buy Tickets. Supplies are limited, purchase before Sept. 8.



WHAT YOU CAN BRING

Wagons, coolers with non alcoholic beverages, your own food and service animals.



WHAT YOU CAN'T BRING

Bicycles, skateboards, pets, alcohol and glass bottles. Bicycle racks are located at gates 1, 3, and 9.



GATE HOURS

11 A.M. to 10 P.M.
FRIDAY, SEPT. 8

7 A.M. to 10 P.M.
SEPT. 9 - 16

7 A.M. to 6 P.M.
SUNDAY, SEPT. 17



BUILDING HOURS*

11 A.M. to 9 P.M.
FRIDAY, SEPT. 8

9 A.M. to 9 P.M.
SEPT. 9 - 16

9 A.M. to 6 P.M.
SUNDAY, SEPT. 17

*some exceptions apply, go to Plan Visit on the Fair's website for the most up-to-date hours on specific buildings.

MIDWAY

SCHEDULES, DEALS AND MORE



FAIRIFIED FUN

5 RIDE PUNCH CARD, \$15

Allows for one ride each on the Ye Old Mill, State Fair Boats, Giant Yellow Slide, Sky Ride and KSF Railroad — a \$20 value. Purchase at the Kansas State Fair Ticket Office. Not available after Sept. 8.

WRISTBANDS, \$35*

Ride any midway ride as many times as you want on ONE wristband day. Buy early to save \$5 thru August 31. See Midway Schedule for dates.

DILLONS DAY WRISTBAND, \$25*

A Dillons Day wristband replaces previous promotions. This wristband is used only on Monday Sept. 11. Purchase early! Also available at Midway Ticket Booths for \$25.

** Excludes Train, Sky Ride, Ye Old Mill, Big Slide, and Boat Ride.*

** Available at the KSF Ticket Office or online at kansasstatefair.com. Wristband Vouchers must be redeemed by 6:00 PM on Sept. 17.*

RIDE SHEETS, \$20

Purchase a sheet of 20 tickets for \$20 before Sept. 8. After this date the cost is \$28. Purchase at the Fair or at a Dillons store. Rides take 3-5 tickets per ride.



MIDWAY SCHEDULE

DATE SPECIALS TIMES

Fri, Sept. 8	Wristband Day	3 p.m. - 11 p.m.
Sat, Sept. 9		11 a.m. - 11 p.m.
Sun, Sept. 10		Noon - 10 p.m.
Mon, Sept. 11	Dillons Day Wristband	Noon - 10 p.m.
Tues, Sept. 12	Wristband Day	1 p.m. - 10 p.m.
Wed, Sept. 13	Wristband Day	Noon - 10 p.m.
Thurs, Sept. 14	Wristband Day	3 p.m. - 10 p.m.
Fri, Sept. 15	Wristband Day	Noon - 11 p.m.
Sat, Sept. 16		11 a.m. - 11 p.m.
Sun, Sept. 17	Wristband Day	Noon - 8 p.m.

RIDE	PRICE	TIME
Big Slide	\$3 (4 for \$10)	9 a.m. - 7:30 p.m.
State Fair Boat Ride	\$5	9 a.m. - 7:30 p.m.
Sky Ride	\$5 (\$8 Round-trip)	9 a.m. - 10 p.m.
State Fair Railroad	\$4	9 a.m. - 7:30 p.m.
Ye Old Mill	\$4	10 a.m. - 10 p.m.

FAIRGROUND RIDES & SCHEDULE

Questions? Contact the KSF Ticket office at 620-669-3618



the

KANSAS STATE FAIR

IS KANSAS' LARGEST CLASSROOM

Sponsored by:



There is no shortage of learning opportunities! Each year, more than 13,000 students from preschool to high school travel to the Fair to learn more about the richness of our state through hands-on experiences.



EDUCATION CENTER

Sponsored by Kansas Farm Bureau

Students, parents and teachers can learn more about the Fair's plethora of educational opportunities at the Education Center. Activities and displays focus on the importance of pollinators, agriculture production, and the American Bison. Educational materials are also available for pick-up.

Dr. Goddard's Lab gives live rocketry demonstrations at 10 a.m., 11 a.m., noon and 2 p.m. presented by the Cosmosphere.

Hours/Location: 9 a.m. to 7 p.m. at the intersection of Bison Boulevard and Lake Talbott Avenue



BIRTHING CENTER

Partnership with KSU College of Veterinary Medicine

A unique experience of the miracle of life – the newborn calves, lambs, piglets, ducklings and chicks are always a hit for Fairgoers of all ages. Experience the birth of a calf with "Bessie," K-State's birthing simulator cow.

Free Moo U Guided Barn Tours sponsored by the Kansas Farm Bureau begin here at the top of the hour from 9 a.m. to noon and 2 p.m. to 5 p.m.

Hours/Location: 9 a.m. to 8 p.m. at the corner of 20th Ave. and Ft. Scott Blvd.

AGRILAND in the Pride of Kansas Building

Students learn how agriculture touches their daily lives – from the food they eat to the clothes they wear – through hands-on activities. They can weigh themselves on a livestock scale, milk a cow, drive a combine, see how a cotton gin works and learn about what's going on in the living soil under their feet.

MILKING PARLOR

Sponsored by Southwest Dairy Farmers and Kansas Dairy

This live exhibit is narrated by a Kansas dairy professional who walks students through the milking process, the life cycle of a dairy cow and answers questions about milk's journey.

Hours/Location: Demonstrations are at the top of the hour 10 a.m. to 2 p.m. & 6 p.m. next to Prairie Pavilion on 20th Ave.

STEM ACTIVITIES

KANSAS ELECTRICAL COOPERATIVE SAFETY DEMONSTRATION

AD ASTRA BUILDING
9 A.M. TO 1 P.M. MON - FRI

Journeyman linemen demonstrate how to tell when a line is energized, what protective gear linemen use, and what happens to a person who comes into contact with an energized line. Students can also build their own electrical circuits.

KDHE MOBILE LAB

509 BISON BOULEVARD
9 A.M. TO 8 P.M. MONDAY-FRIDAY

The KDHE Mobile Laboratory Experience (MLE) is an immersive, educational experience brought to K-12 public schools across Kansas. Featuring hands-on science experiences taught by professional educators and scientists, this onsite field trip is completely grant funded and available for a limited time. Through the wonder of science, the MLE introduces Public Health and inspires future scientists in the related sectors of biology, animal science, environmental science, genetics, chemistry and more!

3 ways to

EARN FREE ICE CREAM!

- ♦ Fill out an Agriculture or Pollinator Passport.
- ♦ Complete a Math-On-A-Stick or Ferris Wheel ABC activity in the Education Center.
- ♦ Take the Moo U tour.

Those who show their completed work at the desk in the Education Center will receive a coupon for ice cream at the Dairy Bar under the Nex-Tech Grandstand.

Sponsored by Kansas Farm Bureau.

Visit our website to learn more about field trips and education.



Education related questions? Email melissa.blake@ks.gov

BEST *of the* BEST

COMPETITIVE EXHIBITS IN 2023



**FAIRIFIED
FLAVOR**

NEW COMPETITIONS AT THE FAIR

NEW ♦ NEW ♦ NEW

Whether it is showing livestock, growing pumpkins, making pies, or even carving butter, there is something for everyone at the Kansas State Fair. Each year new contests and challenges are welcomed. Two new contests featured in the Domestic Arts Food Department include the **FAMILY HEIRLOOM RECIPE CONTEST** and the **KING ARTHUR CINNAMON ROLL CONTEST**. The Fine Arts Department is also showcasing several new competitive exhibits in the OZ Building including **HOMEMADE WINDCHIMES** and **BICYCLE TUBE CRAFTS**. The Floriculture Department in the Pride of Kansas Building has a new division with **WHEELBARROW PLANTERS!**



RECORD BREAKING PUMPKIN

Pumpkins come in all shapes and sizes — but at the Kansas State Fair, it's all about the weight. The giant pumpkin remains a favorite attraction in the Pride of Kansas Building. The heaviest pumpkin receives a \$700 prize and a champion rosette. In 2022, Matt Jacobs and his daughter, Ellie, age 12, from Stilwell, KS, entered the prize-winning pumpkin weighing 1280 lbs. There will be an extra \$100 given to anyone who can break this record.

Sponsored by Elliott Mortuary.



NEW IN 2023

BLUE RIBBON RECIPES

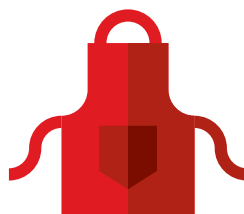


New to the Fair this year is the Blue Ribbon Recipe Program. Eight winners from the 2022 Fair will have their recipes printed for distribution at the 2023 Kansas State Fair. Fair goers may pick up a printed recipe card or scan a QR code for a downloadable version of the recipe at the following locations:

Ad-Astra – 4-H Department
Ag Education – FFA Barn
Pride of Kansas – Ag Department
Showcase Building – FFA
Birthing Center
Talbot East – Pro Art Department

Domestic Arts – Foods Department
Oz Gallery – Fine Arts Department

Sponsored by



BEST JERKY

Calling all Jerky dehydrators! This year, guys and gals will show off their favorite Jerky at the Best Jerky Contest. These tasty creations will be judged on Sept. 16 at 1:00 p.m. in the Domestic Arts Building.



COUNTY CONTEST

Wheat, sunflowers, corn, soybeans... What other Kansas crops can you think of? The Agriculture Dept. is hosting a Scarecrow building contest encouraging the use of a variety of Kansas crops in contestant's designs. Scarecrows can be seen in the Pride of Kansas Building. *Sponsored by Tailored Roofing and Remodeling.*



QUILT BLOCK CONTEST

Once again, Kansas quilters are expressing their State Fair memories — on fabric. These blocks will be used to create a State Fair quilt that will be auctioned off during the 2024 Fair. Stop by the Domestic Arts Building to view handiwork from all across Kansas. The quilts from our 2022 quilt block contest will be available for purchase at the auction on Saturday, Sept. 16 at 3:30 p.m. at Peoples Bank and Trust Arena. For more information, email nancy.j.schmutz@ks.gov.



IN THE LAND OF OZ

The Oz Gallery has a lot to offer including Fine Arts Exhibits, Scouts Exhibits, and School Arts. The Fine Arts Departments present daily demonstrations. Along with the Scouts Exhibits, you can watch the Pine Wood Derby. Check the daily schedule for dates and times.

NEW IN 2023 CHALLENGE OF COUNTY CLERKS

All County Clerks in the State of Kansas were invited to enter a 24" (tabletop) scarecrow. The scarecrows can be found in the Ag Department in the Pride of Kansas Building. First place prize of \$100 goes to the winning county's food bank. The County Clerk gets bragging rights and an award presented by the Governor.

For more information about the Fair's many Competitive Exhibit categories, visit: kansasstatefair.com and click on Competitions. Entry deadline is August 1. A late fee is applied to entries after this date.



GOVERNOR'S COOKIE JAR

One of the most coveted competitions in the Domestic Arts Building is the Governor's Cookie Jar. Contestants decorate a cookie jar to fit a particular theme and fill it with an assortment of cookies. The champion will present the winning cookie jar to the governor.

Sponsored by Hutchinson Chamber of Commerce

THANKS *to* OUR COMPETITION SPONSORS

The Kansas State Fair is thankful for all of the sponsors who make the Competitive Exhibits Department a success.

RACHEL'S BEST SOAPS

Domestic Arts Partner



**Shared growth.
Shared success.**

*Sponsor of the
FFA Department*

PROFESSIONAL ARTS

Come see the Fair's Professional Arts galleries! Professional art exhibits are located in the buildings north of Lake Talbott across from the 4-H Centennial Hall.

WWW.KANSASSTATEFAIR.COM

ACTIVE AGRICULTURE

In addition to the amazing home-grown crop displays, the Ag Department is buzzing with activity with the Butter Sculpture Contest on Saturday, Sept. 9 at 1:00 p.m. and the Best Tasting Tomato contest on Sunday, Sept. 10 at 11:00 a.m. You can also try your hand at shucking corn on Saturday, Sept. 16 at 1:00 p.m. As well as contests, the Agriculture and Floriculture Departments are adding several new demonstrations this year! Check them out in the schedule beginning on page 22.

YOUTH EXHIBITS

All open class departments display youth exhibits in the Pride of Kansas, Oz Gallery, and Domestic Arts buildings. Additional youth exhibits are located in the 4-H Centennial Hall, Ad-Astra (4-H Crops), Showcase Building (FFA) and the Ag Education Barn.

FARMERS. THEY KNOW THERE IS NO PLANET B.



We equip farmers with the tools to best protect our soil, water and air.

MKC *Shared growth.
Shared success.*
www.mkcoop.com

LIVESTOCK

and the **GRAND DRIVE**

FAIRIFIED FAVE

NEW IN 2023

OPEN MARKET SHOW: First Annual Open Market Beef competition. With the support of healthy sponsorships, the KSF will have their first open market beef competition on Sept 17 at Prairie Pavillion. Youth and adults will compete from many states.

MOUNTED SHOOTING & BARRELS: On Monday, Sept. 11 and Tuesday, Sept 12 - mounted shooting demos will be at 10am, 12pm and 2pm with competition starting at 4pm located in Expo areas. Barrel Racing will take place on Monday Sept. 11th starting at 2pm. Come watch these action packed horse events! There will also be two days of clinics taught by John Goodin on Sept. 12th and Sept. 13th. John works with 10 riders a day / 5 per session. This will be a barrel race clinic, not for beginners. He will help problem solve around gate issues, approach, and issues in the barrel pattern. Spectators are also welcome to learn.

WATUSI CATTLE: Will be on display Thursday September 14th through Saturday September 16th. Will be shown Saturday Sept. 16th at 11am. Come see the amazing horns on these unusual cattle at the Livestock Annex.

GRAND DRIVE SCHOLARSHIPS: The Kansas State Fair Grand Drive Scholarship Program is to provide educational opportunities and recognition to youth livestock exhibitors who have demonstrated excellence, commitment, and integrity as ambassadors of the Kansas State Fair Junior Livestock Program. Up to ten \$1,000 scholarships are awarded annually and recipients are recognized at the Kansas State Fair Grand Drive Gala.



New Special Olympics

2020 was the first Champion Livestock Show – Special Olympics Showmanship contest. Exhibitors from the Grand Drive are paired with an athlete from the Kansas Special Olympics. In 2021, Cargill became the main sponsor for the show and have helped grow the event. Then, the event moved into the Prairie Pavilion in 2022.

Athletes and coaches are given a short time for hands-on training, then they get to enter the show ring with their coach and show animal. They are awarded far more than a medal or a shirt – they build confidence and friendships while learning something new.

THANK YOU!

LIVESTOCK SPONSORS



COUNTRYSIDE FEED
B&W TRAILER HITCHES
CUMMINGS CAROUSEL
TROJAN SPECIALTIES

HIGH NOON FEED
HIGH CALL OUTFITTERS
SULLIVAN SUPPLY



Best-In-Class Equipment



Supporting agricultural partnerships through Kansas Livestock Association is just another example of how **Merck Animal Health Works.**



Agriculture is how Kansas feeds the world.

At Cargill, we nurture relationships with Kansas farmers and ranchers to help nourish the world in safe, sustainable ways. Our operations contribute 4,000+ jobs statewide, in beef processing, livestock and poultry feed production, plus grain milling and marketing. And the best is yet to come.



Let's grow a stronger Kansas!
Learn more at
Cargill.com/Kansas

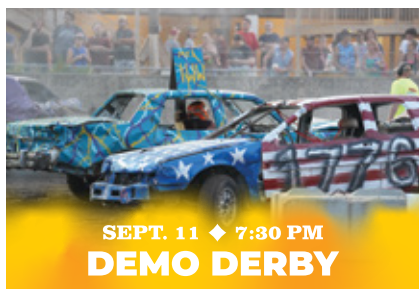


Kansas Rural Communications



CONCERT SERIES

SEPT. 8-17 ♦ 2023



KANSAS STATE FAIR
2000 N. POPLAR ST. HUTCHINSON, KS

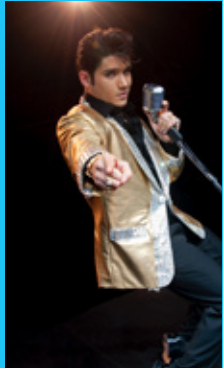
♦ KANSASSTATEFAIR.COM ♦



FAIRIFIED FREE FUN

on the STAGE

Experience the best concert value of the summer
on the Kansas State Fair's free stages!



VICTOR TREVINO

SEPT. 16, 7:30 PM, PEOPLES BANK AND TRUST
ARENA | Sponsored by Crosswinds Casino

Victor Trevino is 'Elvis Presley Enterprises Ultimate Elvis Tribute Artist'. Born and raised in Fort Worth, Texas, he portrayed Elvis in the hit show 'Elvis Lives' for 3 years. It is the only touring Elvis show officially licensed and endorsed by Graceland. He also portrayed Elvis for several years in the hit Las Vegas show, 'Legends in Concert,' in their Las Vegas, Hawaii and Alabama productions. Victor's highly acclaimed starring role in the hit show 'The King in Concert' led to a residency at the New Theater in Kansas City, KS.



KENNY AHERN FAMILY VARIETY THEATRE

LOCATED BY THE BISON ARENA

Kenny Ahern's show displays AMAZING comedy antics, HILARIOUS physical comedy, and FUN audience play! Kenny has toured all over the globe, creating a stellar reputation as a world-class family entertainer.

He shares a captivating performance style that brings into play; physical comedy, improvisation, music, dance, circus/theater arts, audience play, and heartwarming charm.

SHOWTIMES VARY, SEE DAILY SCHEDULE
FOR INDIVIDUAL PERFORMANCE TIMES

HIGHLIGHTS AT THE

FREE STAGES

PEOPLES BANK AND TRUST ARENA

DENNIS LAFFOON - THE PIANO MAN

Dennis Laffoon is a keyboardist, vocalist and recording artist with over 35 years of experience. He has performed with Heart, Journey, Cheap Trick, REO, Night Ranger and Kansas, to name a few. He is known around the world for his versatile and unique style of playing keyboards, and was Inducted into the Kansas Music Hall of Fame, March 9, 2009.

LOWEN CORPORATION STAGE *at* LAKE TALBOTT

KEVIN HORNER - VENTRILOQUIST & FAMILY FAIR SHOW

Kevin Horner is a veteran comedian, ventriloquist, and magician. His unique style, voices, and adaptability spans all ages and personalities. His timing, energy, and quick wit and reactions with all audiences is guaranteed to inspire uproarious laughter.

NIGHT LIFE *at the* FAIR

PEOPLES BANK & TRUST ARENA

- ◆ VOTH
- ◆ THE OTHER GUYS
- ◆ AUTUMN RAGLAND
- ◆ STEEL SKARECROW

LOWEN CORPORATION STAGE *at* LAKE TALBOTT

- ◆ JOHNNY WOODS
- ◆ HUNTER FLYNN
- ◆ FLATLAND
- ◆ DAVE PERRYMAN & THE COUNTRY REVUE
- ◆ MARIACHI LOS REYES

SHOWTIMES VARY, SEE DAILY SCHEDULE
FOR INDIVIDUAL PERFORMANCE TIMES



KANSAS LOTTERY

CHIEFS RED FRIDAY

7:00 PM FRIDAY, SEPT. 15

FEATURING

BLANE HOWARD
KC WOLF
CHIEFS RUMBLE DRUMLINE

PEOPLES BANK AND TRUST ARENA

WEAR YOUR KC CHIEFS GEAR!!

Valued Rally Partner: Sleep Shoppe
& Furniture Gallery

FREE PUBLIC PARKING LOT A

FREE PUBLIC PARKING LOT B

25TH AVE

24TH AVE

23RD AVE

22ND AVE

21ST AVE

20TH AVE

19TH AVE

MAIN ST

HYDE PARK DR



STATE FAIR ROAD



GREEN PARKING
(PERMIT REQUIRED)

GREEN PARKING
(PERMIT REQUIRED)

YELLOW PARKING
(PERMIT REQUIRED)



4-H CENTENNIAL HALL

ENCAMPMENT BUILDING



KANSAS LARGEST CLASSROOM LITTLE RED SCHOOL HOUSE

AGRICULTURE EDUCATION EXHIBITS

CHAMPION ANIMAL EXHIBIT

FAMILY VARIETY THEATER

BISON ARENA

FIRE STATION #1



LAKE TALBOTT

LOWEN CORPORATION FREE STAGE AT LAKE TALBOTT

KANSAS SHOWCASE

EDUCATION CENTER

SUNFLOWER NORTH BUILDING

SUNFLOWER SOUTH BUILDING

MEADOWLARK BUILDING

RESERVED BLUE PARKING
(PERMIT REQUIRED)

LAKE TALBOTT AVE

HONEYBEE LANE

COTTONWOOD AVE

WHEAT STATE LANE

GRANDSTAND AVE

BUTTER SCULPTURE

PRIDE OF KANSAS BUILDING



STAFF PARKING
(PERMIT REQUIRED)



GATE 1

GOTTSCALK PARK

TRAIN DEPOT ADMIN OFFICE

LAIR STECKLINE FOUNTAIN

IDEATEK INTERNET CAFE

EISENHOWER

YE OLD MILL

STATE FAIR MERCHANDISE

HOUSE OF CAPPER

PRIDE OF KANSAS AVE

OZ GALLERY

AD ASTRA PAVILION

RABBIT/POULTRY

MOO U BARN TOURS

DAIRY TIE BARN

MILKING PARLOR

PRAIRIE PAVILION

LIVESTOCK ANNEX

BIRTHING CENTER

FEED BARN

PURPLE PARKING
(PERMIT REQUIRED)

WHITE PARKING
(PERMIT REQUIRED)

N POPLAR ST

20TH AVE

19TH AVE

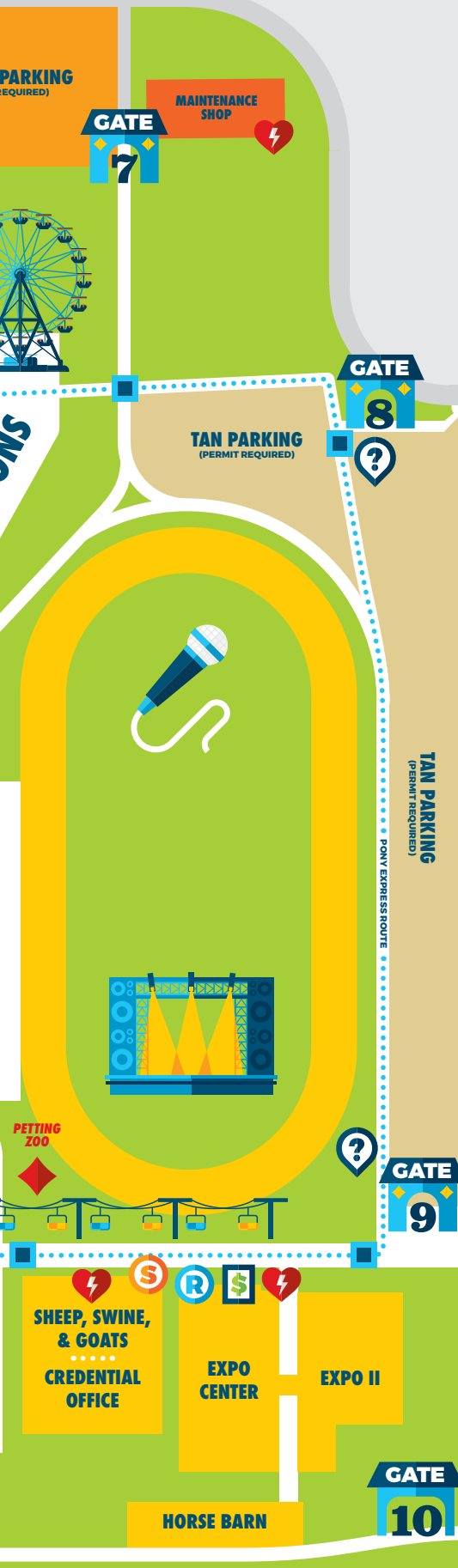
FORT SCOTT BLVD

MIDWAY RIDES & ATTRACTIONS

THE Bobcat CORRAL

Come see us at
Lake Talbot Road
& Fort Hays Blvd.





KANSAS STATE FAIR

2023 FAIRGROUNDS MAP

PURCHASE TICKETS:
1 • 3 • 4 • 5 • 7 • 8 • 9
DRIVE ENTRANCE ONLY:
2 • 6 • 10 • 11



GATES



GRANDSTAND TICKETS



INFORMATION



ATM MACHINES



ADA ACCESSIBLE PARKING



FIRST AID



AED DEFIBRILLATOR



SMOKING AREA



PUBLIC RESTROOMS



SPECIAL ATTRACTIONS



POLLINATOR GARDENS



NURSING MOTHERS' ROOMS



EDUCATION CENTER



TRAM ROUTE



TRAM STOP



MOTORCYCLE PARKING



23RD AVE



FREE PUBLIC PARKING LOT C

PLUM ST

MEDIA AND
VIP PARKING

WILL CALL



PLUM ST

NORMAN RD

SPECIAL ATTRACTIONS

ROVING ACTS

COWBOY CIRCUS

"MAKING KIDS INTO RODEO STARS!"

That's what Danny Grant set out to do when he created COWBOY CIRCUS, an interactive educational cowboy experience for kids of all ages.

Bringing the West to the Rest, Danny uses his rodeo background to teach fair goers everything from trick roping, team roping and even some whip cracking! Make sure to catch this cowboy strolling the grounds at the Kansas State Fair, **Sept. 8-11, 11am, 1pm, 3pm, 4pm & 6pm!**



XPOGO STUNT TEAM

EXTREME POGO ENTERTAINMENT!

The Xpogo Stunt Team is the world's best extreme pogo entertainment, featuring championship pro athletes flying over 10 Feet in the air on extreme pogo sticks. See them throwing down flips and incredible tricks by the Lair White House, Sept 11-17.

9/11, 9/15 & 9/16 1pm, 2:30pm, 6pm, & 8pm

9/12 & 9/13 3pm, 6pm & 8pm

9/14 5pm, 7pm, & 8:30pm

9/17 12:30pm, 2pm & 4pm

ROBO CARS

Highly skilled operators bring these brightly colored, unique, transforming and innovative costumes to life. With their amazing driving skills and crowd interaction, they engage and excite attendees of all ages. See them around the fairgrounds at **2pm, 4pm, & 6pm daily.**



CHECK OUT THESE FAIRIFIED FANTASTIC ACTS

CAPPER COOPERATIVE PARK

The Kansas State Fair is excited to announce the completion of the Copper Building and the Cooperative Park.

THE NEWLY REBUILT HOUSE OF CAPPER was completed earlier this year. Built in the architectural style of the original structure from 1916, this historical landmark of the Kansas State Fairgrounds is now equipped with a state-of-the-art audio and lighting system and boasts a beautiful educational park, complete with story-boards and immaculate landscaping.



NAMED FOR ARTHUR CAPPER, the first native-born Kansas Governor and U.S. Senator who spearheaded the Copper-Volstead Act, the park is the only exhibit in the United States dedicated to cooperatives and the Copper-Volstead act of 1922.

our DAY SPONSORS

Our Day Sponsors are important to keeping the Fair running.
A few even offer special deals on gate admission!

SEPT. 8

FRIDAY



YOUNG AT HEART DAY

We're starting a new tradition celebrating our beloved seniors! On Friday, Sept. 8, gate admission is only \$2 for those 55 and older.

SEPT. 9

SATURDAY



SEPT. 10

SUNDAY



SEPT. 11

MONDAY



DILLONS DOLLAR DAY

Gate admission is just \$1 for general public or get in FREE with a Dillons Plus Card on Monday, Sept. 11! One person admitted per card.

SEPT. 12

TUESDAY



SEPT. 15

FRIDAY



CHIEFS RED FRIDAY

Gate admission is only \$2 for PlayOn members who show their app at the gate on Friday, Sept. 15. Visit www.kslottery.com to become a member for free.

SEPT. 16

SATURDAY



SEPT. 17

SUNDAY



SEPT. 13

WEDNESDAY



CELEBRATING *our* SPONSORS

PLATINUM



Dillons Dollar Day



Tram



Official Lawnmower Supplier



Day Sponsor & Visitors Guide Inside Cover



Reno County Youth, Public Wifi Provider & Staff Apparel



KDADS Young at Heart Day & Tram



Education Partner



Day Sponsor & Building Agreement



Ike the Bison & Official Apparel Provider



Courtesy Vehicle Provider



Free Stage Lake Talbott



Fairgrounds Screens



Grandstand & Official Cell Phone Provider



Day Sponsor & Legislators Luncheon



Arena



Official Tractor & Gator UTV Supplier



Main & Plum Street Digital Signs



NEW WEST SIDE GRANDSTAND SCREEN

Brought to you by Tyson Foods.
We would like to thank Tyson Foods as our sponsor for the new west side LED screen at the Nex-Tech Grandstand.

GOLD



Chiefs Red Friday



LED Screens



Day Sponsor



Day Sponsor



Day Sponsor

SILVER

Aqua Haven

Blue Cross Blue Shield of Kansas

Continental Siding

Cox Communications

Crosswinds Casino

DISH - USA Expo

Heartland Credit Union Association

Kansas Dept. of Health & Environment

Leon Global Group - Forever Beauty

Mattress Firm

Metal & Soul / Central Welding

MKC

Nature Hill - NV Vitamask

Renoir

Sleep Shoppe and Furniture Gallery

Superior Boiler

Tailored Roofing & Remodeling

Thrasher

U.S. Army

Ultra Modern Pool & Patio

Wellcare and Sunflower Health Plan

Wetlands Irrigation & Turf

BRONZE

Aetna

AKSARREN STOCK SHOW

American Packaging

BATH WIZARD

BUCK PLUMBING

Cellular Sales of Kansas, LLC

CPC+ CAPITAL PROJECT CONSULTING PLUS

Elliott Mortuary

FRIENDLY BINGO PALACE

GOOD HEALTH SPAS -- AQUA HAVEN

Hutchinson Chamber of Commerce & Visit Hutch

Hyatt Life Sciences

Instant Shine Cleaners

Kansas Corn Commission/

Kansas Corn Growers Assn

Kansas Electric Cooperatives

Kansas Fairs & Festivals Association

Kansas Strong - Kansas Oil & Natural Gas Producers

Kansas Wesleyan University

Lutheran Laymens League

Mel Hambelton Ford

National Championship Racing Association

Southwest Dairy Farmers

SpineMed Specialists - Dr. Frimpong

Star Lumber - Leech Adhesives

PARTNERS



Health & Safety Partner

MEDIA PARTNERS

NEEDTOBREATHE

KSN KVMF KWME
KXXU KBOB

CARLY PEARCE
WITH MEGAN MORONEY &
LAUREN WATKINS

KZSN KHUT
KWCH KTOP

ROB SCHNEIDER

KSN KZSN KHMV
KTHR KHUT KWBW

DEMO
DERBY

KFXJ KXXU
KICT

COOPER ALAN
WITH FRANK RAY

KWLS

MATTHEW WEST
WITH ANNE WILSON

BOTT RADIO

HAIRBALL

KWCH KFXJ
KICT

LA FIERA
DE OJINAGA

LaRaza

JA RULE
WITH DISCO LINES

KWCH
KZCH

MONSTER
TRUCKS

MAAN RADIO

2023 KANSAS STATE FAIR SCHEDULE

SUBJECT TO CHANGE: most current schedule available at
kansasstatefair.com

DAILY EVENTS

Wood Carving Demo | Oz Gallery
Llama Exhibit | Dairyland
Kansas Department of Wildlife & Parks | Eisenhower Building
Butter Sculpture sponsored by Southwest Dairy Farmers | Pride of Kansas
Agriland | Pride of Kansas
FFA/4H Exhibit Displays | 4H Centennial Hall, Kansas Showcase
Competitive Exhibits Displays | Oz Gallery, Domestic Arts Building, Lake Talbott East, Lake Talbott West, Pride of Kansas Building
KDHE Mobile Lab | 509 Bison Blvd.
Reno County Community Quilt | Domestic Arts Building
Open Pigeons / Poultry Display | Poultry Building
Open Rabbit Display | Rabbit Building

FRIDAY, SEPT. 8

SPONSORED BY:



YOUNG AT HEART DAY \$2 for 55 and older

7:30 AM Working Equitation Show | Expo II
9:00 AM Moo U-Guided Barn Tours | Birthing Center
10:00 AM Dr. Goddard's Lab | Education Center
10:00 AM Milking Parlor Demo | Dairyland
10:00 AM Moo U-Guided Barn Tours | Birthing Center
11:00 AM 4H/FFA Meat Goat Showmanship | Livestock Annex
11:00 AM Chainsaw Woodcarvers | Lake Talbott
11:00 AM Dr. Goddard's Lab | Education Center
11:00 AM Glenda and Mike's Magic and Ventriloquism Show | Lowen Corporation Stage at Lake Talbott
11:00 AM Milking Parlor Demo | Dairyland
11:00 AM Moo U-Guided Barn Tours | Birthing Center
11:00 AM Opening Ceremony | Peoples Bank and Trust Arena
12:00 PM Dr. Goddard's Lab | Education Center
12:00 PM Draft Horse Show | Expo Center
12:00 PM Milking Parlor Demo | Dairyland
12:00 PM Moo U-Guided Barn Tours | Birthing Center

12:30 PM Fifty Years Late | Lowen Corporation Stage at Lake Talbott
12:30 PM Kenny Ahern - Family Variety Theatre | Family Variety Theatre
1:00 PM Chainsaw Woodcarvers | Lake Talbott
1:00 PM Decorative Painting Demo by Special Treasures Studio | Oz Gallery
1:00 PM It's All About the Bread - Contest | Domestic Arts Building
1:00 PM Kevin Horner- Ventriloquist Family Fair Show | Family Variety Theatre
1:00 PM Milking Parlor Demo | Dairyland
1:00 PM Ron Diamond Hypnotist | Peoples Bank and Trust Arena
1:30 PM Champion Livestock Show | Prairie Pavilion
2:00 PM 4H/FFA Swine Showmanship | Sheep, Swine and Goat Building
2:00 PM Alterior Motives | Lowen Corporation Stage at Lake Talbott
2:00 PM Dennis Laffoon - The Piano Man | Peoples Bank and Trust Arena
2:00 PM Dr. Goddard's Lab | Education Center
2:00 PM Draft Horse Show | Expo Center
2:00 PM IFLIP | Gottschalk Park & Stage
2:00 PM Milking Parlor Demo | Dairyland
2:00 PM Moo U-Guided Barn Tours | Birthing Center
2:00 PM Scarecrow Judging | Pride of Kansas Building
2:30 PM Kenny Ahern - Family Variety Theatre | Family Variety Theatre
3:00 PM 4H/FFA Sheep Showmanship | Sheep, Swine and Goat Building
3:00 PM Chainsaw Woodcarvers | Lake Talbott
3:00 PM Homemade Ice Cream & Topping Judging | Domestic Arts Building
3:00 PM Kevin Horner- Ventriloquist Family Fair Show | Lowen Corporation Stage at Lake Talbott
3:00 PM Moo U-Guided Barn Tours | Birthing Center
3:00 PM Ron Diamond Hypnotist | Peoples Bank and Trust Arena
3:30 PM 4H/FFA Beef Showmanship | Prairie Pavilion
4:00 PM Alterior Motives | Lowen Corporation Stage at Lake Talbott
4:00 PM Dennis Laffoon - The Piano Man | Peoples Bank and Trust Arena
4:00 PM IFLIP | Gottschalk Park & Stage
4:00 PM Moo U-Guided Barn Tours | Birthing Center

4:30 PM Kenny Ahern - Family Variety Theatre | Family Variety Theatre
5:00 PM Chainsaw Woodcarvers | Lake Talbott
5:00 PM Kevin Horner- Ventriloquist Family Fair Show | Lowen Corporation Stage at Lake Talbott
5:00 PM Moo U-Guided Barn Tours | Birthing Center
6:00 PM IFLIP | Gottschalk Park & Stage
6:00 PM Milking Parlor Demo | Dairyland
6:00 PM Ron Diamond Hypnotist | Peoples Bank and Trust Arena
6:30 PM Kenny Ahern - Family Variety Theatre | Family Variety Theatre
7:00 PM Great Plains Jazz Orchestra | Capper Building
7:00 PM Johnny Woods | Lowen Corporation Stage at Lake Talbott
7:00 PM Mutton Bustin' Championship | Expo II
7:00 PM Voth | Peoples Bank and Trust Arena
7:30 PM NEEDTOBREATHE | Nex-Tech Grandstand

SATURDAY, SEPT. 9

SPONSORED BY:



7:30 AM Quarter Horse Versatility Show | Expo II
8:00 AM 4H/FFA Beef Market Show | Prairie Pavilion
8:00 AM 4H/FFA Meat Goat Market Show | Livestock Annex
8:00 AM 4H/FFA Sheep Show | Sheep, Swine and Goat Building
8:00 AM 4H/FFA Swine Market Show | Sheep, Swine and Goat Building
8:00 AM Working Equitation Show | Expo II
9:00 AM Artistic Drawing Demo | Oz Gallery
9:00 AM Moo U-Guided Barn Tours | Birthing Center
10:00 AM Dr. Goddard's Lab | Education Center
10:00 AM Honey Demo | Pride of Kansas Building
10:00 AM Milking Parlor Demo | Dairyland
10:00 AM Moo U-Guided Barn Tours | Birthing Center
10:00 AM Ricotta Cheese Demo | Domestic Arts Building
10:30 AM WIBW Live Ag Forum | Peoples Bank and Trust Arena
11:00 AM Chainsaw Woodcarvers | Lake Talbott
11:00 AM Dr. Goddard's Lab | Education Center
11:00 AM Milking Parlor Demo | Dairyland
11:00 AM Moo U-Guided Barn Tours | Birthing Center
11:00 AM Glenda and Mike's Magic and Ventriloquism Show | Lowen Corporation Stage at Lake Talbott

IFLIP

GOTTSCHALK PARK FEATURE

The trampo-wall, aerial bungee and power-track are just a few elements of this fantastic show! Five performers will amaze you with their incredible talent and daredevil acrobatic skills. Filled with lots of high energy, comedy and a terrifying 50' high fall into a stunt bag. The entire family will truly enjoy it!

Sponsored by: Heartland Credit Union



SHOWTIMES:

DAILY | 2:00, 4:00 & 6:00 pm

SEPT. 9 - 10, 15 - 16 | 12:00, 2:00, 4:00, 6:00 pm

- 12:00 PM** Kenny Ahern - Family Variety Theatre | Family Variety Theatre
- 12:00 PM** Milking Parlor Demo | Dairyland
- 12:00 PM** Dr. Goddard's Lab | Education Center
- 12:00 PM** Moo U-Guided Barn Tours | Birthing Center
- 12:00 PM** Ricotta Cheese Demo | Domestic Arts Building
- 12:00 PM** The Parr Family | Lowen Corporation Stage at Lake Talbott
- 1:00 PM** Butter Sculpture Contest | Pride of Kansas Building
- 1:00 PM** Celebrity Grape Stomp | Gottschalk Park Gazebo
- 1:00 PM** Chainsaw Woodcarvers | Lake Talbott
- 1:00 PM** Kansas Kountree Kloggers | Capper Building
- 1:00 PM** Kevin Horner- Ventriloquist Family Fair Show | Family Variety Theatre
- 1:00 PM** Legislative Showmanship | Prairie Pavilion
- 1:00 PM** Milking Parlor Demo | Dairyland
- 1:00 PM** Ron Diamond Hypnotist | Peoples Bank and Trust Arena
- 1:30 PM** Pies, Pies, and More Pies Contest | Domestic Arts Building
- 2:00 PM** Dr. Goddard's Lab | Education Center
- 2:00 PM** IFLIP | Gottschalk Park & Stage
- 2:00 PM** Kenny Ahern - Family Variety Theatre | Family Variety Theatre
- 2:00 PM** Milking Parlor Demo | Dairyland
- 2:00 PM** Moo U-Guided Barn Tours | Birthing Center
- 2:00 PM** Nutz & Boltz | Peoples Bank and Trust Arena
- 2:00 PM** Talmage Quartet | Lowen Corporation Stage at Lake Talbott
- 2:30 PM** 4H/FFA Commercial Heifer Show | Prairie Pavilion
- 3:00 PM** Chainsaw Woodcarvers | Lake Talbott
- 3:00 PM** Kevin Horner- Ventriloquist Family Fair Show | Lowen Corporation Stage at Lake Talbott
- 3:00 PM** Moo U-Guided Barn Tours | Birthing Center
- 3:00 PM** Ron Diamond Hypnotist | Peoples Bank and Trust Arena
- 4:00 PM** Dennis Laffoon - The Piano Man | Peoples Bank and Trust Arena
- 4:00 PM** Holy Cross Catholic Church Service | Encampment Bldg. - Hansen Auditorium
- 4:00 PM** IFLIP | Gottschalk Park & Stage
- 4:00 PM** Kenny Ahern - Family Variety Theatre | Family Variety Theatre
- 4:00 PM** Moo U-Guided Barn Tours | Birthing Center
- 4:00 PM** Talmage Quartet | Lowen Corporation Stage at Lake Talbott
- 5:00 PM** Chainsaw Woodcarvers | Lake Talbott

- 5:00 PM** Kevin Horner- Ventriloquist Family Fair Show | Lowen Corporation Stage at Lake Talbott
- 5:00 PM** Moo U-Guided Barn Tours | Birthing Center
- 6:00 PM** 4H/FFA Grand Drive | Prairie Pavilion
- 6:00 PM** IFLIP | Gottschalk Park & Stage
- 6:00 PM** Kenny Ahern - Family Variety Theatre | Family Variety Theatre
- 6:00 PM** Milking Parlor Demo | Dairyland
- 6:00 PM** Ron Diamond Hypnotist | Peoples Bank and Trust Arena
- 6:00 PM** The Parr Family | Lowen Corporation Stage at Lake Talbott
- 7:00 PM** Great Plains Jazz Orchestra | Capper Building
- 7:00 PM** Hunter Flynn | Lowen Corporation Stage at Lake Talbott
- 7:00 PM** The Other Guys | Peoples Bank and Trust Arena
- 7:30 PM** Carly Pearce with Megan Moroney and Lauren Watkins | Nex-Tech Grandstand

- 11:00 AM** Best Tasting Tomato Contest Judging | Pride of Kansas Building
- 11:00 AM** Chainsaw Woodcarvers | Lake Talbott
- 11:00 AM** Dr. Goddard's Lab | Education Center
- 11:00 AM** Glenda and Mike's Magic and Ventriloquism Show | Lowen Corporation Stage at Lake Talbott
- 11:00 AM** Milking Parlor Demo | Dairyland
- 11:00 AM** Moo U-Guided Barn Tours | Birthing Center
- 11:00 AM** Youth Favorite Cookie Contest | Domestic Arts Building, Pride of Kansas Building
- 11:30 AM** Rub-A-Dub-Dub, What's in the Tub? Grab Some Grub | FFA Agricultural Exhibit Area

SUNDAY, SEPT. 10

SPONSORED BY:



- All Day** 4H/FFA Swine Breeding Show | Sheep, Swine and Goat Building
- 8:00 AM** 4H/FFA Cattle Breeding Show | Prairie Pavilion
- 8:00 AM** 4H/FFA Goat Breeding Show | Livestock Annex
- 8:00 AM** 4H/FFA Sheep Breeding Show | Sheep, Swine and Goat Building
- 8:00 AM** Rabbit Show | Rabbit Barn
- 9:00 AM** Artistic Drawing Demo | Oz Gallery, Outside Lots
- 9:00 AM** Moo U-Guided Barn Tours | Birthing Center
- 9:30 AM** Rub-A-Dub-Dub, What's in the Tub? Grab Some Grub | FFA Agricultural Exhibit Area
- 10:00 AM** Dr. Goddard's Lab | Education Center
- 10:00 AM** Honey Demo | Pride of Kansas Building
- 10:00 AM** Milking Parlor Demo | Dairyland
- 10:00 AM** Moo U-Guided Barn Tours | Birthing Center
- 10:00 AM** Sunday Worship - Lutheran Laymen's League | Peoples Bank and Trust Arena



**EVERYONE HAS A FAVORITE FAIR FOOD!
WHAT ARE YOU GONNA EAT FIRST?**

- 12:00 PM** Kenny Ahern - Family Variety Theatre | Family Variety Theatre
- 12:00 PM** Milking Parlor Demo | Dairyland
- 12:00 PM** Moo U-Guided Barn Tours | Birthing Center
- 12:00 PM** Dr. Goddard's Lab | Education Center
- 12:30 PM** Dennis Laffoon - The Piano Man | Lowen Corporation Stage at Lake Talbott
- 1:00 PM** Chainsaw Woodcarvers | Lake Talbott
- 1:00 PM** Kevin Horner- Ventriloquist Family Fair Show | Family Variety Theatre
- 1:00 PM** Milking Parlor Demo | Dairyland
- 1:00 PM** Pedal Pull Championships | Peoples Bank and Trust Arena
- 1:00 PM** Porcelain Painting Demo | Oz Gallery
- 1:30 PM** Stafford County Mill Biscuit Bake-Off | Domestic Arts Building

2:00 PM Dr. Goddard's Lab | Education Center

2:00 PM Kenny Ahern - Family Variety Theatre | Family Variety Theatre

2:00 PM Milking Parlor Demo | Dairyland

2:00 PM Mixed Gravel Band | Lowen Corporation Stage at Lake Talbott

2:00 PM Moo U-Guided Barn Tours | Birthing Center

2:00 PM IFLIP | Gottschalk Park & Stage

2:00 PM Rub-A-Dub-Dub, What's in the Tub? Grab Some Grub | FFA Agricultural Exhibit Area

3:00 PM Chainsaw Woodcarvers | Lake Talbott

3:00 PM Kevin Horner- Ventriloquist Family Fair Show | Lowen Corporation Stage at Lake Talbott

3:00 PM Moo U-Guided Barn Tours | Birthing Center

4:00 PM IFLIP | Gottschalk Park & Stage

4:00 PM Draft Horse Pull Competition | Expo Center, Pride of Kansas Building

4:00 PM Fifty Years Late | Lowen Corporation Stage at Lake Talbott

4:00 PM Glass Art Demo By Cynthia Landon | Oz Gallery

4:00 PM Kenny Ahern - Family Variety Theatre | Family Variety Theatre

4:00 PM Moo U-Guided Barn Tours | Birthing Center

4:00 PM IFLIP | Gottschalk Park & Stage

5:00 PM Chainsaw Woodcarvers | Lake Talbott

5:00 PM Kevin Horner- Ventriloquist Family Fair Show | Lowen Corporation Stage at Lake Talbott

5:00 PM Moo U-Guided Barn Tours | Birthing Center

5:00 PM PeeWee Dairy Cattle Showmanship | Prairie Pavilion, Dairyland

5:00 PM Ron Diamond Hypnotist | Peoples Bank and Trust Arena

6:00 PM IFLIP | Gottschalk Park & Stage

6:00 PM Dairy Cattle Showmanship | Prairie Pavilion, Dairyland

6:00 PM Kenny Ahern - Family Variety Theatre | Family Variety Theatre

6:00 PM Milking Parlor Demo | Dairyland

6:00 PM Ron Diamond Hypnotist | Peoples Bank and Trust Arena

6:30 PM Dennis Laffoon - The Piano Man | Lowen Corporation Stage at Lake Talbott

6:30 PM Rub-A-Dub-Dub, What's in the Tub? Grab Some Grub | FFA Agricultural Exhibit Area

7:00 PM Autumn Ragland | Peoples Bank and Trust Arena

7:00 PM Dairy Cattle Show | Prairie Pavilion, Dairyland

7:00 PM Hutchinson Brass Quintet | Capper Building

7:30 PM Rob Schneider with Byron Kennedy | Nex-Tech Grandstand

MONDAY, SEPT. 11

SPONSORED BY:



DILLONS DOLLAR DAY

\$1 or free w/ Dillons Plus

7:00 AM Emergency Preparedness Exhibit | Administration Building Parking Lot

8:00 AM Dairy Cattle Show | Prairie Pavilion, Dairyland

8:00 AM Marching Bands | Peoples Bank and Trust Arena

9:00 AM Basics of Electricity and Electrical Safety Demo | Ad Astra Building

9:00 AM Moo U-Guided Barn Tours | Birthing Center

9:30 AM Rub-A-Dub-Dub, What's in the Tub? Grab Some Grub | FFA Agricultural Exhibit Area

10:00 AM Basics of Electricity and Electrical Safety Demo | Ad Astra Building

10:00 AM Dr. Goddard's Lab | Education Center

10:00 AM Honey Demo | Pride of Kansas Building

10:00 AM Kansas Dairy Demo | Domestic Arts Building

10:00 AM Milking Parlor Demo | Dairyland

10:00 AM Moo U-Guided Barn Tours | Birthing Center

10:00 AM Sunflower Mounted Shooters Demo | Expo II

10:30 AM Dairy Cattle Show | Prairie Pavilion, Dairyland

11:00 AM Basics of Electricity and Electrical Safety Demo | Ad Astra Building

11:00 AM Chainsaw Woodcarvers | Lake Talbott

11:00 AM Dr. Goddard's Lab | Education Center

11:00 AM Glenda and Mike's Magic and Ventriloquism Show | Lowen Corporation Stage at Lake Talbott

11:00 AM Milking Parlor Demo | Dairyland

11:00 AM Moo U-Guided Barn Tours | Birthing Center

11:00 AM State Fair Promenaders Square Dance Club - See & Do | Capper Building

11:00 AM Wet Felting Demo with Wool Market | Domestic Arts Building

11:30 AM Rub-A-Dub-Dub, What's in the Tub? Grab Some Grub | FFA Agricultural Exhibit Area

12:00 PM Glenn Roth | Lowen Corporation Stage at Lake Talbott

12:00 PM Milking Parlor Demo | Dairyland

12:00 PM Moo U-Guided Barn Tours | Birthing Center

12:00 PM State Fair Promenaders Square Dance Club Demo | Capper Building

12:00 PM Sunflower Mounted Shooters Demo | Expo II

12:00 PM Dr. Goddard's Lab | Education Center

1:00 PM Basics of Electricity and Electrical Safety Demo | Ad Astra Building

1:00 PM Cake Decorating Demo by Holly's Sweet Treats | Domestic Arts Building

1:00 PM Chainsaw Woodcarvers | Lake Talbott

1:00 PM Dairy Cattle Show | Prairie Pavilion, Dairyland

1:00 PM Kevin Horner- Ventriloquist Family Fair Show | Family Variety Theatre

1:00 PM Milking Parlor Demo | Dairyland

1:00 PM Ron Diamond Hypnotist | Peoples Bank and Trust Arena

1:00 PM State Fair Promenaders Square Dance Club See & Do | Capper Building

1:30 PM Jaydnce Jean | Lowen Corporation Stage at Lake Talbott

2:00 PM Barrel Bash | Expo Center

2:00 PM Dr. Goddard's Lab | Education Center

PUBS & PUPS



PUB CRAWL

Back by popular demand, the Kansas State Fair is hosting TWO Pub Crawls themed in correlation with Nex-Tech Grandstand performances. The first Pub Crawl theme is Small Town Celebrities, inspired by Cooper Alan. He will be joined by Frank Ray on Tuesday, Sept. 12.

Thursday, Sept. 14 Pub Crawl is Pub Rockers. Continue the party at the Hairball concert later that evening.

Go to kansassatefair.com and click Participate to purchase your Pub Crawl punch card, complimentary t-shirt and also, sign up for the NEW Pub Crawl Bingo Game.



PRONTO PUP EATING CONTEST

Here's an excuse to eat all the Pronto Pups you physically can in 10 minutes. Contestants receive a T-shirt and all the Pronto Pups you can eat. Don't want to participate? Come down and watch the action!

To enter go to kansassatefair.com and click on Participate.

SUNDAY, SEPT. 17 | 12:00 P.M. at Peoples Bank and Trust Arena.

Sponsored by: D&J Pronto Pup



WE WANT TO SEE YOUR FAIRIFIED PHOTOS

Show us how you got Fairified during this year's Kansas State Fair. Competitions, food, rides, shows—we want to see it all!

Photos/videos may be used in Kansas State Fair print and digital pieces. Entries due Sept. 18.



- 2:00 PM** Glenn Roth | Peoples Bank and Trust Arena
- 2:00 PM** IFLIP | Gottschalk Park & Stage
- 2:00 PM** Kansas Dairy Demo | Domestic Arts Building
- 2:00 PM** Milking Parlor Demo | Dairyland
- 2:00 PM** Moo U-Guided Barn Tours | Birthing Center
- 2:00 PM** Rub-A-Dub-Dub, What's in the Tub? Grab Some Grub | FFA Agricultural Exhibit Area
- 2:00 PM** State Fair Promenaders Square Dance Club Line Dancing | Capper Building
- 2:00 PM** Sunflower Mounted Shooters Demo | Expo II
- 3:00 PM** Cake Decorating Demo by Holly's Sweet Treats | Domestic Arts Building
- 3:00 PM** Chainsaw Woodcarvers | Lake Talbott
- 3:00 PM** Dairy Cattle Show | Dairyland
- 3:00 PM** Glass Art Demo By Cynthia Landon | Oz Gallery
- 3:00 PM** Kenny Ahern - Family Variety Theatre | Family Variety Theatre
- 3:00 PM** Kevin Horner- Ventriloquist Family Fair Show | Lowen Corporation Stage at Lake Talbott
- 3:00 PM** Moo U-Guided Barn Tours | Birthing Center
- 3:00 PM** Ron Diamond Hypnotist | Peoples Bank and Trust Arena
- 3:00 PM** State Fair Promenaders Square Dance Club Come & Try | Capper Building
- 3:30 PM** State Fair Promenaders Square Dance Club | Capper Building
- 4:00 PM** Dennis Laffoon - The Piano Man | Peoples Bank and Trust Arena
- 4:00 PM** IFLIP | Gottschalk Park & Stage
- 4:00 PM** Jaydnce Jean | Lowen Corporation Stage at Lake Talbott
- 4:00 PM** Moo U-Guided Barn Tours | Birthing Center
- 4:00 PM** Sunflower Mounted Shooter Competition | Expo II
- 5:00 PM** Chainsaw Woodcarvers | Lake Talbott
- 5:00 PM** Kenny Ahern - Family Variety Theatre | Family Variety Theatre
- 5:00 PM** Kevin Horner- Ventriloquist Family Fair Show | Lowen Corporation Stage at Lake Talbott
- 5:00 PM** Moo U-Guided Barn Tours | Birthing Center
- 6:00 PM** Dairy Cattle Supreme Drive | Prairie Pavillion

- 6:00 PM** Kid Lip Sync Battle | Lake Talbott
- 6:00 PM** IFLIP | Gottschalk Park & Stage
- 6:00 PM** Milking Parlor Demo | Dairyland
- 6:00 PM** Ron Diamond Hypnotist | Peoples Bank and Trust Arena
- 6:30 PM** Rub-A-Dub-Dub, What's in the Tub? Grab Some Grub | FFA Agricultural Exhibit Area
- 7:00 PM** Eli Alger and The Faster Horses | Peoples Bank and Trust Arena
- 7:00 PM** Great Plains Jazz Orchestra | Capper Building
- 7:00 PM** Kenny Ahern - Family Variety Theatre | Family Variety Theatre
- 7:30 PM** Flatland | Lowen Corporation Stage at Lake Talbott

TUESDAY, SEPT. 12

SPONSORED BY:



TASTY TUESDAY

\$3.00 concessions at participating vendors! Pick up a flyer at the gate.

4 AFTER 4

Get in for \$4 after 4 P.M. with this evening deal!

- 8:00 AM** John Goodin Horse Clinic | Expo II
- 8:00 AM** Marching Bands | Peoples Bank and Trust Arena
- 9:00 AM** Basics of Electricity and Electrical Safety Demo | Ad Astra Building
- 9:00 AM** Debate Showcase | Encampment Bldg. - Hansen Auditorium
- 9:00 AM** Moo U-Guided Barn Tours | Birthing Center
- 9:30 AM** Boer Goat Show | Sheep, Swine and Goat Building
- 9:30 AM** Rub-A-Dub-Dub, What's in the Tub? Grab Some Grub | FFA Agricultural Exhibit Area
- 10:00 AM** Basics of Electricity and Electrical Safety Demo | Ad Astra Building
- 10:00 AM** Dr. Goddard's Lab | Education Center
- 10:00 AM** Honey Demo | Pride of Kansas Building
- 10:00 AM** Milking Parlor Demo | Dairyland
- 10:00 AM** Moo U-Guided Barn Tours | Birthing Center
- 10:00 AM** Sunflower Mounted Shooter Demo | Expo Center
- 11:00 AM** Basics of Electricity and Electrical Safety Demo | Ad Astra Building

- 11:00 AM** Chainsaw Woodcarvers | Lake Talbott
- 11:00 AM** Dr. Goddard's Lab | Education Center
- 11:00 AM** Glenda and Mike's Magic and Ventriloquism Show | Lowen Corporation Stage at Lake Talbott
- 11:00 AM** Milking Parlor Demo | Dairyland
- 11:00 AM** Moo U-Guided Barn Tours | Birthing Center
- 11:30 AM** KS Soybeans Favorite Recipes with Charlene Patton | Domestic Arts Building
- 11:30 AM** Rub-A-Dub-Dub, What's in the Tub? Grab Some Grub | FFA Agricultural Exhibit Area
- 12:00 PM** Invent a Heart Healthy Food Contest | Domestic Arts Building
- 12:00 PM** INSTEP | Peoples Bank and Trust Arena
- 12:00 PM** Milking Parlor Demo | Dairyland
- 12:00 PM** Moo U-Guided Barn Tours | Birthing Center
- 12:00 PM** Sunflower Mounted Shooter Demo | Expo Center
- 12:00 PM** Wreath Craft Demo with Cynthia Landon | Oz Gallery
- 12:00 PM** Dr. Goddard's Lab | Education Center
- 1:00 PM** Basics of Electricity and Electrical Safety Demo | Ad Astra Building
- 1:00 PM** Chainsaw Woodcarvers | Lake Talbott
- 1:00 PM** Dennis Laffoon - The Piano Man | Peoples Bank and Trust Arena
- 1:00 PM** John Goodin Horse Clinic | Expo II
- 1:00 PM** Kevin Horner- Ventriloquist Family Fair Show | Family Variety Theatre
- 1:00 PM** Milking Parlor Demo | Dairyland
- 1:00 PM** Porcelain Painting Demo | Oz Gallery
- 1:00 PM** Open Sheep Show | Sheep, Swine and Goat Building
- 2:00 PM** Dr. Goddard's Lab | Education Center
- 2:00 PM** IFLIP | Gottschalk Park & Stage
- 2:00 PM** Makayla Brownlee | Peoples Bank and Trust Arena
- 2:00 PM** Milking Parlor Demo | Dairyland
- 2:00 PM** Moo U-Guided Barn Tours | Birthing Center
- 2:00 PM** Nutz & Boltz | Lowen Corporation Stage at Lake Talbott
- 2:00 PM** Rub-A-Dub-Dub, What's in the Tub? Grab Some Grub | FFA Agricultural Exhibit Area
- 2:00 PM** Sunflower Mounted Shooter Demo | Expo Center
- 3:00 PM** Chainsaw Woodcarvers | Lake Talbott
- 3:00 PM** Kenny Ahern - Family Variety Theatre | Family Variety Theatre
- 3:00 PM** Kevin Horner- Ventriloquist Family Fair Show | Lowen Corporation Stage at Lake Talbott
- 3:00 PM** Moo U-Guided Barn Tours | Birthing Center

4:00 PM IFLIP | Gottschalk Park & Stage

4:00 PM Moo U-Guided Barn Tours | Birthing Center

4:00 PM Nutz & Boltz | Lowen Corporation Stage at Lake Talbott

4:00 PM Small Town Celebrities Pub Crawl | Fairgrounds

4:00 PM Sunflower Mounted Shooter Competition | Expo Center

4:30 PM George Sanders Blues Band | Peoples Bank and Trust Arena

5:00 PM Chainsaw Woodcarvers | Lake Talbott

5:00 PM Kenny Ahern - Family Variety Theatre | Family Variety Theatre

5:00 PM Kevin Horner- Ventriloquist Family Fair Show | Lowen Corporation Stage at Lake Talbott

5:00 PM Moo U-Guided Barn Tours | Birthing Center

6:00 PM Dennis Laffoon - The Piano Man | Lowen Corporation Stage at Lake Talbott

6:00 PM IFLIP | Gottschalk Park & Stage

6:00 PM Milking Parlor Demo | Dairyland

6:30 PM Buhler Singers | Peoples Bank and Trust Arena

6:30 PM Rub-A-Dub-Dub, What's in the Tub? Grab Some Grub | FFA Agricultural Exhibit Area

7:00 PM Great Plains Jazz Orchestra | Capper Building

7:00 PM Kenny Ahern - Family Variety Theatre | Family Variety Theatre

7:30 PM Cooper Alan with Frank Ray | Nex-Tech Grandstand

WEDNESDAY, SEPT. 13

SPONSORED BY:



SHOP 'TIL YOU DROP

Participating vendors are offering discounts on selected merchandise. Pick up a flyer at the gate!

8:00 AM John Goodin Horse Clinic | Expo II

8:00 AM Marching Bands | Peoples Bank and Trust Arena

9:00 AM Basics of Electricity and Electrical Safety Demo | Ad Astra Building

9:00 AM Dog Demo Day | Expo Center

9:00 AM Moo U-Guided Barn Tours | Birthing Center

9:00 AM Open Sheep Show | Sheep, Swine and Goat Building

9:00 AM Veteran's/Military Appreciation Breakfast | Encampment Bldg - Dillon Hall

9:30 AM Rub-A-Dub-Dub, What's in the Tub? Grab Some Grub | FFA Agricultural Exhibit Area

10:00 AM Basics of Electricity and Electrical Safety Demo | Ad Astra Building

10:00 AM Dr. Goddard's Lab | Education Center

10:00 AM Honey Demo | Pride of Kansas Building

10:00 AM How to Make Animal Woodcarvings | Oz Gallery

10:00 AM Milking Parlor Demo | Dairyland

10:00 AM Moo U-Guided Barn Tours | Birthing Center

11:00 AM Basics of Electricity and Electrical Safety Demo | Ad Astra Building

11:00 AM Chainsaw Woodcarvers | Lake Talbott

11:00 AM Dr. Goddard's Lab | Education Center

11:00 AM Glenda and Mike's Magic and Ventriloquism Show | Lowen Corporation Stage at Lake Talbott

11:00 AM Milking Parlor Demo | Dairyland

11:00 AM Moo U-Guided Barn Tours | Birthing Center

11:30 AM Rub-A-Dub-Dub, What's in the Tub? Grab Some Grub | FFA Agricultural Exhibit Area

12:00 PM Milking Parlor Demo | Dairyland

12:00 PM Moo U-Guided Barn Tours | Birthing Center

12:00 PM Dr. Goddard's Lab | Education Center

1:00 PM Basics of Electricity and Electrical Safety Demo | Ad Astra Building

1:00 PM Chainsaw Woodcarvers | Lake Talbott

1:00 PM John Goodin Horse Clinic | Expo II

1:00 PM Kevin Horner- Ventriloquist Family Fair Show | Family Variety Theatre

1:00 PM King Arthur Cinnamon Roll Contest | Domestic Arts Building

1:00 PM Milking Parlor Demo | Dairyland

1:00 PM Super Cow/Calf Show | Livestock Annex

1:30 PM Nickerson High School Madrigals | Lowen Corporation Stage at Lake Talbott

2:00 PM Dr. Goddard's Lab | Education Center

2:00 PM Kansas Auctioneers Association Bid Calling Contest | Peoples Bank and Trust Arena

2:00 PM Milking Parlor Demo | Dairyland

2:00 PM Moo U-Guided Barn Tours | Birthing Center

2:00 PM IFLIP | Gottschalk Park & Stage

2:00 PM Rub-A-Dub-Dub, What's in the Tub? Grab Some Grub | FFA Agricultural Exhibit Area

3:00 PM Chainsaw Woodcarvers | Lake Talbott

3:00 PM Kenny Ahern - Family Variety Theatre | Family Variety Theatre

3:00 PM Kevin Horner- Ventriloquist Family Fair Show | Lowen Corporation Stage at Lake Talbott

3:00 PM Moo U-Guided Barn Tours | Birthing Center

4:00 PM Dennis Laffoon - The Piano Man | Peoples Bank and Trust

4:00 PM IFLIP | Gottschalk Park & Stage

4:00 PM Moo U-Guided Barn Tours | Birthing Center

5:00 PM Chainsaw Woodcarvers | Lake Talbott

5:00 PM Kenny Ahern - Family Variety Theatre | Family Variety Theatre

5:00 PM Kevin Horner- Ventriloquist Family Fair Show | Lowen Corporation Stage at Lake Talbott

5:00 PM Moo U-Guided Barn Tours | Birthing Center

5:00 PM Ron Diamond Hypnotist | Peoples Bank and Trust Arena

6:00 PM Dennis Laffoon - The Piano Man | Peoples Bank and Trust Arena

6:00 PM IFLIP | Gottschalk Park & Stage

6:00 PM Kids Lip Sync | Lowen Corporation Stage at Lake Talbott

6:00 PM Milking Parlor Demo | Dairyland

6:30 PM Rub-A-Dub-Dub, What's in the Tub? Grab Some Grub | FFA Agricultural Exhibit Area

7:00 PM Great Plains Jazz Orchestra | Capper Building

7:00 PM Kenny Ahern - Family Variety Theatre | Family Variety Theatre

7:00 PM Ron Diamond Hypnotist | Peoples Bank and Trust Arena

7:30 PM Matthew West with Anne Wilson | Nex-Tech Grandstand

THURSDAY, SEPT. 14

4 AFTER 4

Get in for \$4 after 4 P.M. with this evening deal!

9:00 AM Basics of Electricity and Electrical Safety Demo | Ad Astra Building

9:00 AM Forensics Showcase | Encampment Bldg. - Hansen Auditorium

9:00 AM Moo U-Guided Barn Tours | Birthing Center

9:00 AM Watusi Display | Livestock Annex

9:30 AM Rub-A-Dub-Dub, What's in the Tub? Grab Some Grub | FFA Agricultural Exhibit Area

10:00 AM Basics of Electricity and Electrical Safety Demo | Ad Astra Building

10:00 AM Dr. Goddard's Lab | Education Center

10:00 AM Forensics Showcase | Encampment Bldg. - Hansen Auditorium

10:00 AM Honey Demo | Pride of Kansas Building

10:00 AM Milking Parlor Demo | Dairyland

10:00 AM Moo U-Guided Barn Tours | Birthing Center

11:00 AM 4-H Horse Show | Expo Center, Expo II

11:00 AM Basics of Electricity and Electrical Safety Demo | Ad Astra Building

11:00 AM Chainsaw Woodcarvers | Lake Talbott



KANSAS FAIRGROUNDS FOUNDATION

Renovation, Construction, Preservation & Beautification of the Kansas State Fairgrounds

KSFAIRGROUNDSFOUNDATION.ORG

The Kansas Fairgrounds Foundation works to enrich the *memories and traditions* you experience *today* and for generations to come.

STAY CONNECTED!

Join our First Friday E-Updates to stay up-to-date on all things Foundation!



Use the QR code or email info@KansasSFF.org

LATEST PROJECTS



Capper Project

Dedicated in 2023, The Historic House of Capper and the new Capper Cooperative Park are ready for visitors!



New!

Join the T.A.G. Team today!

or visit the Merchandise and Information Booth during the Fair



Fountain House

Fundraising now! Be part of the 2023 T.A.G. Team to help renovate the Fountain House next to the interactive fountain.

Coming Soon!

Foundation Event Venue

Coming in 2024, the Foundation Event Venue will be a can't miss attraction for the Fairgrounds!



TACOS or TEAMS?

Why not both.



Explore MERRIAM KANSAS



VISIT
**KANSAS
-CITY-
KANSAS**

Connect with us!
VisitKansasCityKS.com
[@VisitKansasCityKS](https://www.instagram.com/VisitKansasCityKS)

EXPLOREMERRIAM.COM

11:00 AM Dr. Goddard's Lab | Education Center

11:00 AM BCI Cattle Chat sponsored by K-State Vet | Livestock Annex

11:00 AM Forensics Showcase | Encampment Bldg. - Hansen Auditorium

11:00 AM Glenda and Mike's Magic and Ventriloquism Show | Lowen Corporation Stage at Lake Talbott

11:00 AM Milking Parlor Demo | Dairyland

11:00 AM Moo U-Guided Barn Tours | Birthing Center

11:00 AM The Art of Air Frying with Apron Strings | Domestic Arts Building

11:30 AM Rub-A-Dub-Dub, What's in the Tub? Grab Some Grub | FFA Agricultural Exhibit Area

12:00 PM Dennis Laffoon - The Piano Man | Peoples Bank and Trust Arena

12:00 PM Forensics Showcase | Encampment Bldg. - Hansen Auditorium

12:00 PM Milking Parlor Demo | Dairyland

12:00 PM Moo U-Guided Barn Tours | Birthing Center

12:00 PM Dr. Goddard's Lab | Education Center

1:00 PM Basics of Electricity and Electrical Safety Demo | Ad Astra Building

1:00 PM Chainsaw Woodcarvers | Lake Talbott

1:00 PM Forensics Showcase | Encampment Bldg. - Hansen Auditorium

1:00 PM Kevin Horner- Ventriloquist Family Fair Show | Family Variety Theatre

1:00 PM Milking Parlor Demo | Dairyland

1:00 PM Nutz & Boltz | Peoples Bank and Trust Arena

1:00 PM Porcelain Painting Demo | Oz Gallery

2:00 PM INSTEP | Lowen Corporation Stage at Lake Talbott

2:00 PM Dave Perryman and the Country Revue | Peoples Bank and Trust Arena

2:00 PM Dr. Goddard's Lab | Education Center

2:00 PM Kansas State Fair Bingo | Encampment Bldg - Dillon Hall

2:00 PM Milking Parlor Demo | Dairyland

2:00 PM Moo U-Guided Barn Tours | Birthing Center

2:00 PM Rub-A-Dub-Dub, What's in the Tub? Grab Some Grub | FFA Agricultural Exhibit Area

2:00 PM IFLIP | Gottschalk Park & Stage

3:00 PM Chainsaw Woodcarvers | Lake Talbott

3:00 PM Kenny Ahern - Family Variety Theatre | Family Variety Theatre

3:00 PM Moo U-Guided Barn Tours | Birthing Center

3:00 PM Kevin Horner- Ventriloquist Family Fair Show | Lowen Corporation Stage at Lake Talbott

4:00 PM INSTEP | Lowen Corporation Stage at Lake Talbott

4:00 PM Moo U-Guided Barn Tours | Birthing Center

4:00 PM Pub Rockers Pub Crawl | Fairgrounds

4:00 PM IFLIP | Gottschalk Park & Stage

5:00 PM Chainsaw Woodcarvers | Lake Talbott

5:00 PM Dennis Laffoon - The Piano Man | Peoples Bank and Trust Arena

5:00 PM Kenny Ahern - Family Variety Theatre | Family Variety Theatre

5:00 PM Kevin Horner- Ventriloquist Family Fair Show | Lowen Corporation Stage at Lake Talbott

5:00 PM Moo U-Guided Barn Tours | Birthing Center

6:00 PM IFLIP | Gottschalk Park & Stage

6:00 PM Milking Parlor Demo | Dairyland

6:30 PM Rub-A-Dub-Dub, What's in the Tub? Grab Some Grub | FFA Agricultural Exhibit Area

07:00 PM Dave Perryman and the Country Revue | Lowen Corporation Stage at Lake Talbott

07:00 PM Hutchinson Brass Quintet | Capper Building

07:00 PM Kenny Ahern - Family Variety Theatre | Family Variety Theatre

07:00 PM Steel Skarecrow | Peoples Bank and Trust Arena

07:30 PM Hairball | Nex-Tech Grandstand

FRIDAY, SEPT. 15

SPONSORED BY:

CHIEFS RED FRIDAY

Gate admission is \$2 for members of the PlayOn app.

8:00 AM 4-H Horse Show | Expo Center , Expo II

9:00 AM Basics of Electricity and Electrical Safety Demo | Ad Astra Building

9:00 AM Moo U-Guided Barn Tours | Birthing Center

9:00 AM Open Beef Cattle | Prairie Pavilion

9:00 AM Watusi Display | Livestock Annex

9:30 AM Rub-A-Dub-Dub, What's in the Tub? Grab Some Grub | FFA Agricultural Exhibit Area

10:00 AM Basics of Electricity and Electrical Safety Demo | Ad Astra Building



Explore Kansas while you attend the Fair! Find new and fascinating places in Kansas and plan your next trip around the Sunflower State! So many things to see right here in our part of the prairie! Sept. 16 & 17 in the Oz Gallery!

- ◆ Amelia Earhart Hangar Museum
- ◆ Cloud County
- ◆ Field Station Dinosaurs
- ◆ Kansas Historical Society
- ◆ Kansas Black Farmers Assoc
- ◆ Nicodemus Community
- ◆ Land & Sky Scenic Byways
- ◆ Northwest Travel Council
- ◆ Owls Lavender Patch
- ◆ Southeast Kansas Tourism Region
- ◆ Strataca

MANUFACTURED BY BURLINGTON WELDING, LLC

Diamond w Corrals

SORT CATTLE

The Easy Way

(PATENT PENDING) COW CALF CORRAL
W/ OPTIONAL EXPANDER WINGS

CALL (580) 596-3381

or visit diamondwcorrals.com/dealer-locator/

to find a dealer near you!

10:00 AM Dr. Goddard's Lab | Education Center

10:00 AM Honey Demo | Pride of Kansas Building

10:00 AM Milking Parlor Demo | Dairyland

10:00 AM Moo U-Guided Barn Tours | Birthing Center

11:00 AM Basics of Electricity and Electrical Safety Demo | Ad Astra Building

11:00 AM Chainsaw Woodcarvers | Lake Talbott

11:00 AM Dr. Goddard's Lab | Education Center

11:00 AM Glenda and Mike's Magic and Ventriloquism Show | Lowen Corporation Stage at Lake Talbott

11:00 AM Milking Parlor Demo | Dairyland

11:00 AM Moo U-Guided Barn Tours | Birthing Center

11:00 AM The Topsy Farmer - Growing Hops | Pride of Kansas Building

11:00 AM Raices di mi Tierra | Peoples Bank and Trust Arena

11:30 AM Rub-A-Dub-Dub, What's in the Tub? Grab Some Grub | FFA Agricultural Exhibit Area

12:00 PM Fresh Salsa Contest | Domestic Arts Building

12:00 PM Kenny Ahern - Family Variety Theatre | Family Variety Theatre

12:00 PM Milking Parlor Demo | Dairyland

12:00 PM Moo U-Guided Barn Tours | Birthing Center

12:00 PM Dr. Goddard's Lab | Education Center

1:00 PM Basics of Electricity and Electrical Safety Demo | Ad Astra Building

1:00 PM Chainsaw Woodcarvers | Lake Talbott

1:00 PM Decorative Painting Demo by Special Treasures Studio | Oz Gallery

1:00 PM Milking Parlor Demo | Dairyland

1:00 PM Open Swine Show | Sheep, Swine and Goat Building

1:00 PM Ron Diamond Hypnotist | Peoples Bank and Trust Arena

1:00 PM The Topsy Farmer - Growing Hops | Pride of Kansas Building

2:00 PM KC Chiefs Super Bowl Trophy Showcase | House of Capper

2:00 PM Dennis Laffoon - The Piano Man | Peoples Bank and Trust Arena

2:00 PM Dr. Goddard's Lab | Education Center

2:00 PM IFLIP | Gottschalk Park & Stage

2:00 PM Kansas State Fair Bingo | Encampment Bldg - Dillon Hall

2:00 PM Kenny Ahern - Family Variety Theatre | Family Variety Theatre

2:00 PM Kevin Horner- Ventriloquist Family Fair Show | Lowen Corporation Stage at Lake Talbott

2:00 PM Milking Parlor Demo | Dairyland

2:00 PM Moo U-Guided Barn Tours | Birthing Center

2:00 PM Rub-A-Dub-Dub, What's in the Tub? Grab Some Grub | FFA Agricultural Exhibit Area

3:00 PM Celebrity Goat Milking | Sheep, Swine and Goat Building

3:00 PM Chainsaw Woodcarvers | Lake Talbott

3:00 PM Kevin Horner- Ventriloquist Family Fair Show | Lowen Corporation Stage at Lake Talbott

3:00 PM Moo U-Guided Barn Tours | Birthing Center

3:00 PM Ron Diamond Hypnotist | Peoples Bank and Trust Arena

3:30 PM Curley's All Natural BBQ Sauce Contest | Domestic Arts Building

4:00 PM Dennis Laffoon - The Piano Man | Peoples Bank and Trust Arena

4:00 PM IFLIP | Gottschalk Park & Stage

4:00 PM Kenny Ahern - Family Variety Theatre | Family Variety Theatre

4:00 PM Moo U-Guided Barn Tours | Birthing Center

4:30 PM Raices di mi Tierra | Lowen Corporation Stage at Lake Talbott

5:00 PM Chainsaw Woodcarvers | Lake Talbott

5:00 PM Kevin Horner- Ventriloquist Family Fair Show | Family Variety Theatre

5:00 PM Mexico en el Corazon Folkloric Group | Capper Building

5:00 PM Moo U-Guided Barn Tours | Birthing Center

5:00 PM Ron Diamond Hypnotist | Peoples Bank and Trust Arena

5:30 PM Mariachi Los Reyes | Lowen Corporation Stage at Lake Talbott

6:00 PM IFLIP | Gottschalk Park & Stage

6:00 PM Kenny Ahern - Family Variety Theatre | Family Variety Theatre

6:00 PM Milking Parlor Demo | Dairyland

6:30 PM Rub-A-Dub-Dub, What's in the Tub? Grab Some Grub | FFA Agricultural Exhibit Area

7:00 PM Blane Howard | Peoples Bank and Trust Arena

7:00 PM Mexico en el Corazon Folkloric Group | Capper Building

7:30 PM La Fiera de Ojinaga | Nex-Tech Grandstand

SATURDAY, SEPT. 16

SPONSORED BY:



8:00 AM Dairy Goat Show | Sheep, Swine and Goat Building

8:00 AM 4-H Horse Show | Expo Center, Expo II

8:30 AM Roy Coffey Antique Farm Machinery Show | Administration Building Parking Lot

9:00 AM Explore Kansas Festival | Oz Gallery

9:00 AM Moo U-Guided Barn Tours | Birthing Center

9:00 AM Open Beef Cattle | Prairie Pavilion

9:00 AM Open Swine Show | Sheep, Swine and Goat Building

9:00 AM Watusi Display | Livestock Annex

9:30 AM Rub-A-Dub-Dub, What's in the Tub? Grab Some Grub | FFA Agricultural Exhibit Area

10:00 AM Dr. Goddard's Lab | Education Center



WOOD CARVER AND QUILT AUCTION

SEPT. 16 4:00-5:00PM
PEOPLES BANK AND TRUST ARENA

10:00 AM Honey Demo | Pride of Kansas Building

10:00 AM Milking Parlor Demo | Dairyland

10:00 AM Moo U-Guided Barn Tours | Birthing Center

11:00 AM Chainsaw Woodcarvers | Lake Talbott

11:00 AM Cheesecake Contest | Domestic Arts Building

11:00 AM Dr. Goddard's Lab | Education Center

11:00 AM Glenda and Mike's Magic and Ventriloquism Show | Lowen Corporation Stage at Lake Talbott

11:00 AM Manhattan High School POPS Choir | Peoples Bank and Trust Arena

11:00 AM Milking Parlor Demo | Dairyland

11:00 AM Moo U-Guided Barn Tours | Birthing Center

11:00 AM Watusi Show | Livestock Annex

11:30 AM Midwest Hemp Tech Talks | Pride of Kansas Building

11:30 AM Rub-A-Dub-Dub, What's in the Tub? Grab Some Grub | FFA Agricultural Exhibit Area

12:00 PM Kenny Ahern - Family Variety Theatre | Family Variety Theatre

12:00 PM Milking Parlor Demo | Dairyland

12:00 PM Moo U-Guided Barn Tours | Birthing Center

12:00 PM Ron Diamond Hypnotist | Peoples Bank and Trust Arena

12:00 PM Dr. Goddard's Lab | Education Center

1:00 PM Best Jerky Contest | Domestic Arts Building

1:00 PM Chainsaw Woodcarvers | Lake Talbott

1:00 PM Corn Husking Contest | Pride of Kansas Building

1:00 PM Dennis Laffoon - The Piano Man | Peoples Bank and Trust Arena

1:00 PM Kansas Kountree Kloggers | Capper Building

1:00 PM Kevin Horner- Ventriloquist Family Fair Show | Family Variety Theatre

1:00 PM Llama Show | Expo II

1:00 PM Milking Parlor Demo | Dairyland

1:00 PM Porcelain Painting Demo | Oz Gallery

1:30 PM Husband Calling Contest | Lowen Corporation Stage at Lake Talbott

2:00 PM Dairy Goat Show | Sheep, Swine and Goat Building

2:00 PM Dr. Goddard's Lab | Education Center

2:00 PM IFLIP | Gottschalk Park & Stage

2:00 PM Kenny Ahern - Family Variety Theatre | Family Variety Theatre

2:00 PM Milking Parlor Demo | Dairyland

2:00 PM Moo U-Guided Barn Tours | Birthing Center

2:00 PM Ron Diamond Hypnotist | Peoples Bank and Trust Arena

2:00 PM Rub-A-Dub-Dub, What's in the Tub? Grab Some Grub | FFA Agricultural Exhibit Area

3:00 PM Chainsaw Woodcarvers | Lake Talbott

3:00 PM Kevin Horner- Ventriloquist Family Fair Show | Lowen Corporation Stage at Lake Talbott

3:00 PM Midwest Hemp Tech Talks | Pride of Kansas Building

3:00 PM Moo U-Guided Barn Tours | Birthing Center

3:00 PM Wild Horse Youth Mustang Challenge | Expo Center

4:00 PM IFLIP | Gottschalk Park & Stage

4:00 PM Kenny Ahern - Family Variety Theatre | Family Variety Theatre

4:00 PM Moo U-Guided Barn Tours | Birthing Center

4:00 PM Wilson Czech Dancers | Lowen Corporation Stage at Lake Talbott

4:00 PM Woodcarver and Quilt Auction | Peoples Bank and Trust Arena

5:00 PM Kevin Horner- Ventriloquist Family Fair Show | Lowen Corporation Stage at Lake Talbott

5:00 PM Moo U-Guided Barn Tours | Birthing Center

6:00 PM Chainsaw Woodcarvers | Lake Talbott

6:00 PM IFLIP | Gottschalk Park & Stage

6:00 PM Kenny Ahern - Family Variety Theatre | Family Variety Theatre

6:00 PM Milking Parlor Demo | Dairyland

6:00 PM Ron Diamond Hypnotist | Peoples Bank and Trust Arena

6:30 PM Rub-A-Dub-Dub, What's in the Tub? Grab Some Grub | FFA Agricultural Exhibit Area

7:00 PM Dennis Laffoon - The Piano Man | Lowen Corporation Stage at Lake Talbott

7:00 PM Hutchinson Brass Quintet | Capper Building

7:30 PM Ja Rule with Disco Lines | Nex-Tech Grandstand

7:30 PM Victor Trevino - The Ultimate Elvis Show | Peoples Bank and Trust Arena

SUNDAY, SEPT. 17

SPONSORED BY:



8:00 AM Dairy Goat Show | Sheep, Swine and Goat Building

8:00 AM Llama Show | Expo II

8:00 AM Wild Horse Youth Mustang Challenge | Expo Center

8:30 AM Kansas State Fair Outdoor Auto Show | Administration Building Parking Lot

9:00 AM Artistic Drawing Demo | Oz Gallery

9:00 AM Explore Kansas Festival | Oz Gallery

9:00 AM Moo U-Guided Barn Tours | Birthing Center

9:30 AM Rub-A-Dub-Dub, What's in the Tub? Grab Some Grub | FFA Agricultural Exhibit Area

10:00 AM Dr. Goddard's Lab | Education Center

10:00 AM Honey Demo | Pride of Kansas Building

10:00 AM Milking Parlor Demo | Dairyland

10:00 AM Moo U-Guided Barn Tours | Birthing Center

10:00 AM Sunflower Woodworkers Demo | Oz Gallery

11:00 AM Chainsaw Woodcarvers | Lake Talbott

11:00 AM Dr. Goddard's Lab | Education Center

11:00 AM Glenda and Mike's Magic and Ventriloquism Show | Lowen Corporation Stage at Lake Talbott

11:00 AM Milking Parlor Demo | Dairyland

11:00 AM Moo U-Guided Barn Tours | Birthing Center

11:30 AM Rub-A-Dub-Dub, What's in the Tub? Grab Some Grub | FFA Agricultural Exhibit Area

12:00 PM Kenny Ahern - Family Variety Theatre | Family Variety Theatre

12:00 PM Milking Parlor Demo | Dairyland

12:00 PM Moo U-Guided Barn Tours | Birthing Center

12:00 PM Open Market Beef Show | Prairie Pavilion

12:00 PM Pronto Pup Eating Contest | Peoples Bank and Trust Arena

12:00 PM Dr. Goddard's Lab | Education Center

1:00 PM Chainsaw Woodcarvers | Lake Talbott

1:00 PM Heartland Revival | Lowen Corporation Stage at Lake Talbott

1:00 PM Milking Parlor Demo | Dairyland

1:00 PM Ron Diamond Hypnotist | Peoples Bank and Trust Arena

1:30 PM AUSA Kansas Arm Wrestling Championships "The Event" | Capper Building

2:00 PM 4Given | Peoples Bank and Trust Arena

2:00 PM Dr. Goddard's Lab | Education Center

2:00 PM Heartland Revival | Lowen Corporation Stage at Lake Talbott

2:00 PM IFLIP | Gottschalk Park & Stage

2:00 PM Kenny Ahern - Family Variety Theatre | Family Variety Theatre

2:00 PM Milking Parlor Demo | Dairyland

2:00 PM Moo U-Guided Barn Tours | Birthing Center

2:00 PM Rub-A-Dub-Dub, What's in the Tub? Grab Some Grub | FFA Agricultural Exhibit Area

3:00 PM Chainsaw Woodcarvers | Lake Talbott

3:00 PM Mixed Gravel Band | Lowen Corporation Stage at Lake Talbott

3:00 PM Moo U-Guided Barn Tours | Birthing Center

3:00 PM Ron Diamond Hypnotist | Peoples Bank and Trust Arena

4:00 PM IFLIP | Gottschalk Park & Stage

4:00 PM Kenny Ahern - Family Variety Theatre | Family Variety Theatre

4:00 PM Moo U-Guided Barn Tours | Birthing Center

4:00 PM All-Star Monster Trucks | Nex-Tech Grandstand

5:00 PM Chainsaw Woodcarvers | Lake Talbott

5:00 PM Moo U-Guided Barn Tours | Birthing Center

6:00 PM IFLIP | Gottschalk Park & Stage

6:00 PM Milking Parlor Demo | Dairyland

6:30 PM Rub-A-Dub-Dub, What's in the Tub? Grab Some Grub | FFA Agricultural Exhibit Area



KANSAS STATE FAIR OUTDOOR AUTO SHOW

SEPT. 17 8:30 AM - 4:00 PM
ADMIN BUILDING PARKING LOT

Sponsored by Buck Plumbing

JOIN US AT

IDEATEK'S INTERNET CAFE

Come chill out at IdeaTek's
Internet Cafe located across from
the Domestic Arts Building

(at the corner of Cottonwood Ave. and Cottonwood Terrace)



PUBLIC WI-FI, SEATING, PRIZES, AIR CONDITIONED
ALL FREE!

Headquartered in Buhler, IdeaTek is a
broadband service provider with the mission of
fighting for **INTERNET FREEDOM™** for Kansas.

SCAN TO LEARN MORE ABOUT IDEATEK SERVICE >



IdeaTek.com | 855-433-2835



That's my personal customer service!

At **RCB BANK**, you will find a
friendly face & warm smile
from a banker you trust.

Visit us today to see why our customers
always say, *"That's my bank!"*

RCBbank.bank | 855.BANK.RCB

**RCB
BANK**

That's my bank!

MEMBER FDIC