



KANSAS STATE FAIR

2024 VISITOR GUIDE



GET
FAIRIFIED

SEPT. 6-15 |
HUTCHINSON, KS

TABLE *of* CONTENTS



GET FAIRIFIED

How do you know when you're a true Kansan? When you're a bona fide, certified member of the Sunflower State? You get **fairified**, of course!

Fairification is easy. All it takes is one trip to the Kansas State Fair, and you're in! **Fairified** members get all sorts of perks, like delicious food, interesting exhibits, concerts, carnival rides, and much more!

3 Message from the Governor

5 New in 2024

8 Gate Admission

10 Midway

12 Education

14 Competitive Exhibits

16 NexTech Grandstand Lineup

20 Special Attractions

21 Day Sponsors

24 The Grand Drive

27 Feature Foods

28 Special Events

MESSAGE FROM THE GOVERNOR

WELCOME TO THE 2024 KANSAS STATE FAIR!

As you enter the fairgrounds, know that you are taking part in one of my favorite Kansas traditions. Each year, visitors from around the world come to Hutchinson to celebrate the culture and history of our great state. Whether that means taste-testing 50-year-old family recipes, attending a show at the Nex-Tech Grandstand, or experiencing Kansas' rich agricultural history firsthand, the State Fair showcases why it's so great to be a Kansan.

The Fair also reflects our state's history of entrepreneurship and resilience. It began over 150 years ago with a group of businesspeople who organized the Reno County Agricultural Society. Despite a swarm of angry grasshoppers interrupting activities the next year, organizers persisted and gradually expanded the Fair into the modern version we know and love.

The Fair continues to evolve to this day. In 2019, one of the first bills I signed as governor authorized the State Fair Board to establish a nonprofit corporation to fundraise to expand the Fair's offerings. Over the past few years,

the state has invested millions to restore and improve buildings across the State Fairgrounds to provide fairgoers with an even more dynamic experience. Under the leadership of the State Fair Board and General Manager Bryan Schulz, the State Fair continues to increase attendance, draw new, exciting attractions, and bring together Kansans and visitors to our state like never before.

My administration will continue to support efforts to grow the Fair in the coming years as an important Kansas tourist attraction, and a symbol of our agricultural sector's strength, and a driver of the local economy.

No matter what brings you to the Fair, enjoy your time here and create memories that will last a lifetime. To those who make this valuable attraction possible year in and year out, I say thank you. You make our state proud.



Laura Kelly

LAURA KELLY
Governor of Kansas

MESSAGE FROM THE PRESIDENT

WELCOME TO *your* KANSAS STATE FAIR.

The Fair Board and Staff have been busy preparing for the 2024 Fair.

As always, you will find the many outstanding exhibits that our great Kansas people have spent many hours preparing to showcase at the Fair. Be sure to check out all of the 4-H and FFA members' displays and projects that share their expertise and knowledge with everyone.

Check out the vendors that have all kinds of new, tried and true merchandise. Don't forget all of the delicious Fair food staples – and find out what is new in “Fair Food”. Try something new and enjoy all your favorite traditions. There is always something for everyone!

Take time to see all of the improvements on the grounds. New pavement, renovated Expo Center, air conditioning in more buildings and much more to make your Fair experience even better than before.

Entertainment this year will be second to none. Free stages and strolling acts are available for everyone's pleasure. There will be Grandstand acts of all genres, and sure to please. The Carnival will be outstanding, as always. Be sure to visit with all of your old friends that will be here and make some new friends you are sure to meet.

YOUR Kansas State Fair should be on everyone's agenda. It's always entertaining, educational and most of all fun!
See you there!



Bob Atkisson

BOB ATKISSON
President of the Board
Kansas State Fair

NEW IN 2024



PIG RACES

The Pig Races are back! Get ready to watch these pigs sprint around the track at their new location by Hedrick's Petting Zoo. See the daily schedule for dates and times.

BUSTIN' A MOVE

Sponsored by Continental Siding

Mutton Bustin' is moving to Sunday, September 8. Located in Expo II, registration begins at 5:00 p.m.

SENIORS GOT TALENT

Come watch the professionally produced Sunflower Seniors Got Talent Show in Hansen Auditorium Friday, September 6th from 2:00 p.m. - 4:00 p.m. This event showcases the talents of Kansans 65 and older.

IMPROVED ODDS

Sponsored by Blue Cross Blue Shield of Kansas & Friendly Bingo

Bingo is back with more chances to win! This year, the Kansas State Fair has added two extra days of bingo. Now on Monday, September 9; Thursday, September 12; Friday, September 13; and Sunday, September 15 in Dillon Hall from 2:00 - 3:00 p.m. Fairgoers can try their luck for only \$1.00 a card.



SHOCKER SUNDAY

WICHITA STATE UNIVERSITY

WICHITA STATE UNIVERSITY FOUNDATION AND ALUMNI ENGAGEMENT



Shocker Sunday at the Kansas State Fair is a tailor-made day for all things Wichita State. On September 15 come wearing your WSU pride! For more details about the event visit our website at www.kansasstatefair.com or view our mobile app.



CATHOLIC MASS

The Kansas State Fair will be hosting an additional Mass service this year. The first will be held on Saturday, September 7 from 4:00 p.m. - 5:00 p.m. and the second on Sunday, September 15 from 8:00 a.m. - 9:00 a.m. in Hansen Auditorium.

NEW IN 2024



GOAT YOGA

Grazing for a stretch? Get rid of all your baaa-d energy with our new Goat Yoga class located in the Ad Astra Pavilion. The class will be hosted on Tuesday, September 10 from 8:00 a.m. - 9:00 a.m.

HUTCH STORYTIME

Storytime with our friends from Hutchinson Public Library

Saturdays & Sundays:
10:00 a.m. - 11:00 a.m. & 3:00 p.m. - 4:00 p.m.
in the story nook at the Education Center.



1861 CLUB

The 1861 Club is the Fairground's newest addition. During the Kansas State Fair, the Club acts as a climate-controlled food, beverage, and entertainment venue for fast, fine dining and an awe-inspiring experience for all Fair attendees. For most of the year it operates as a high-end venue for weddings, special and corporate events, and activities. Visit www.1861club.com for more details about venue rentals.

SHOW OFF

This year, the Champion Livestock Show will host a competitive class for Goat Showmanship alongside Beef Showmanship. The show will take place on Friday, September 6 at 1:30 p.m. in the Prairie Pavilion.

MESSAGE FROM THE GENERAL MANAGER

Welcome to the Kansas State Fair! We are thrilled to have you join us for a celebration of our state's rich agricultural heritage, vibrant culture, and unmatched community spirit.

Whether you are here to showcase your prized livestock, compete in thrilling contests, or simply to experience "All Things Kansas," we are excited to share this time-honored tradition with you.

As you explore the Fairgrounds, you will discover a diverse array of exhibits and activities that highlight the unique talents and contributions of Kansans from all walks of life. Our Fair is more than just an event; it is a testament to the strength and unity of our community. We invite you to take part in the excitement, create lasting memories, and celebrate the spirit of Kansas with us. Thank you for being a part of the Kansas State Fair, and we hope you have an unforgettable experience!



BRYAN SCHULZ
General Manager of the
Kansas State Fair

DOWNLOAD THE ALL-NEW

KANSAS STATE FAIR APP



- ✓ Food and shopping vendor map
- ✓ Daily schedule
- ✓ FAQs and tips for your trip
- ✓ ...and more!

Search "Kansas State Fair" in the **Apple App Store** or **Google Play Store**



FAIRIFIED FACTS

SAVE *on* ADMISSION

FRIDAY, SEPT. 6
\$2 for 55 and older



MONDAY, SEPT. 9
\$1 or free w/ Dillons Plus



TUES, SEPT. 10 & THURS, SEPT. 12
\$4 after 4 p.m.

FRIDAY, SEPT. 13
\$2 for PlayOn members



EVERY DAY
\$5 after 9 p.m.

SEASON PASS

\$50
(\$100 VALUE)

- 10 gate admission scans on a badge
- Can be used one per day, all at once, or in any increment
- Not available after Sept. 5

GATE ADMISSION

TYPE	BEFORE SEPT. 6	SEPT. 6 - 15
Child (age 6-12)	\$4	\$6
Adult (age 13+)	\$7	\$10
Senior (age 60+)	\$4	\$6
Military w/ ID	\$4	\$4

Purchase your Kansas State Fair tickets *before* Sept. 6 for discount gate admission!

Ticket outlets include the Kansas State Fair ticket office at 2000 N. Poplar, online, or any Kansas Dillons store. Military tickets can be purchased at the Fair gates.

For information on our kids, family, seniors, couples packages and season passes, call 620-669-3618 or visit kansasstatefair.com and click on Buy Tickets. Supplies are limited; purchase before Sept. 6.

STUFF YOU SHOULD KNOW!



WHAT YOU CAN BRING

Wagons, coolers with nonalcoholic beverages, your own food and service animals.



WHAT YOU CAN'T BRING

Bicycles, skateboards, pets, alcohol and glass bottles. Bicycle racks are located at Gates 1, 3, and 9.

For more information on items that are allowed in the Fair, see the Frequently Asked Questions page on the Fair's website: www.kansasstatefair.com.



GATE HOURS

11 A.M. to 10 P.M.
FRIDAY, SEPT. 6

7 A.M. to 10 P.M.
SEPT. 7 - 14

7 A.M. to 6 P.M.
SUNDAY, SEPT. 15



BUILDING HOURS*

11 A.M. to 9 P.M.
FRIDAY, SEPT. 6

9 A.M. to 9 P.M.
SEPT. 7 - 14

9 A.M. to 6 P.M.
SUNDAY, SEPT. 15

*some exceptions apply, go to Plan Visit on the Fair's website for the most up-to-date hours on specific buildings.



ADA ACCESSIBLE PARKING

There are three areas available in the public parking lots: Gate 5, south of State Fair Rd.; Gate 8, corner of 23rd Ave. and Plum St.; Gate 9, corner of E. 20th Ave. and Plum St.



NURSING MOTHERS' ROOMS

Rooms that offer privacy and a quiet atmosphere for nursing are located in the Encampment Building and at Cottonwood Court in the Women's Restroom.



FIRST AID

Located at the west end of the Administration Building on the South Side.



AEDS

AED Defibrillators are located throughout the Fairgrounds. Thanks to our Partner: *Blue Cross Blue Shield of Kansas Foundation*. SEE MAP.



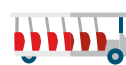
LOST & FOUND

The Lost and Found is located at the east end of the Administration Building. If you believe you have lost an item please call (620) 669-3600.



TRANSPORTATION RENTALS

Wheelchairs, strollers, and mobility carts are available for rent south of Gate 5 and west of Gate 9. For more information and reservations call Scootaround Mobility Rentals at 1-888-441-7575.



TRAMS

See Fair map (page 18) for tram stop locations. Trams run from 9 a.m. - dark on weekends and from 10 a.m. - 7 p.m. on week days. *Sponsored by Evergy*.



ELECTRIC CAR CHARGING

The nearest charging stations are located at the Hutchinson Regional Medical Center and Strataca Salt Museum.



MERCHANDISE

State Fair Merchandise is sold at the Kansas Fairgrounds Foundation booth near the fountain across from Ye Old Mill.

MIDWAY

SCHEDULE

DATE SPECIAL TIMES

Fri, Sept. 6	Wristband	3 p.m. - 10 p.m.
Sat, Sept. 7		11 a.m. - 11 p.m.
Sun, Sept. 8		Noon - 10 p.m.
Mon, Sept. 9	Wristband	Noon - 10 p.m.
Tues, Sept. 10	Wristband	1 p.m. - 10 p.m.
Wed, Sept. 11	Wristband	Noon - 10 p.m.
Thurs, Sept. 12	Wristband	3 p.m. - 10 p.m.
Fri, Sept. 13	Wristband	Noon - 11 p.m.
Sat, Sept. 14		11 a.m. - 11 p.m.
Sun, Sept. 15	Wristband	Noon - 8 p.m.

SCHEDULES, DEALS, AND MORE



RIDE

PRICE

TIME

Big Slide	\$3 (4 for \$10)	9 a.m. - 7:30 p.m.
State Fair Boat Ride	\$5	9 a.m. - 7:30 p.m.
Sky Ride	\$5 (\$8 Round-trip)	9 a.m. - 10 p.m.
State Fair Railroad	\$4	9 a.m. - 7:30 p.m.
Ye Old Mill	\$4	10 a.m. - 10 p.m.

FAIRGROUND RIDES & SCHEDULE*

*Ride hours vary on the last Sunday of the Fair.

NEW

FUNTAGG CARD, \$32

65 tickets on a refillable, non-expiring credit-card style card with ride tickets embedded. This replaces all paper ride tickets of previous years. The Fair will have the 65-ticket Funtagg card available for \$30 in the Ticket Office leading up to the Fair, online, or \$32 at the Midway Ticket Booths during the Fair.

Questions? Contact the KSF Ticket office at 620-669-3618



FAIRIFIED FUN

5 RIDE PUNCH CARD, \$15

Allows for one ride each on the Ye Old Mill, State Fair Boats, Giant Yellow Slide, Sky Ride and KSF Railroad — a \$21 value. Purchase at the Kansas State Fair Ticket Office, or on our website. Not available after Sept. 5.

WRISTBANDS, \$35*

Ride any midway ride as many times as you want on ONE wristband day. Wristbands are \$35 starting September 1. See Midway Schedule for wristband days.

* Wristband purchase does not include Train, Sky Ride, Ye Old Mill, Big Slide, and Boat Ride.

* Wristbands are available at the KSF Ticket Office or online at kansasstatefair.com. Wristband Vouchers must be redeemed by 6:00 p.m. on Sept. 15.

WE WANT TO SEE YOUR **FAIRIFIED** PHOTOS

Show us how you got Fairified during this year's Kansas State Fair. Competitions, food, rides, shows—we want to see it all!

Photos/videos may be used for Kansas State Fair print and digital pieces. Entries due Sept. 30.



QUILTS WITH A STORY



During your visit to the 2024 Kansas State Fair, be sure to stop by the Domestic Arts Building. In addition to the amazing Quilts, Clothing, and Food Competition Exhibits, you will see the display of Quilts with a Story.

Each quilt in this unique display has a story told by the family or friends who now own the piece. Several of the quilts were pieced together by family members who have long passed, but their memories remain within each stitch. The exhibit depicts the history of our Kansas past.

A BATTLE OF *epic* PROPORTIONS

Pumpkins come in all shapes and sizes — but at the Kansas State Fair, it's all about the weight. The giant pumpkin remains a favorite attraction in the Pride of Kansas Building. The heaviest pumpkin receives a \$700 prize and a champion rosette.

In 2022, Matt Jacobs and his daughter, Ellie, age 12, from Stilwell, KS, entered the prize-winning pumpkin weighing 1280 lbs. There will be an extra \$100 given to anyone who can break this record.

Sponsored by *Elliott Mortuary*



KANSAS' LARGEST CLASSROOM

Sponsored by



There is no shortage of learning opportunities! Each year, more than 13,000 students from preschool to high school travel to the Fair to learn more about the richness of our state through hands-on experiences.

MARCHING BAND COMPETITION

Sponsored by
HeadQuarters Kansas

Nearly 6,000 band students attend the Kansas State Fair each year, performing in a marching competition around the Fairgrounds before putting their best foot forward for a professionally judged competition at the People's Bank and Trust Arena.



BIRTHING CENTER

Partnership with KSU College of Veterinary Medicine

A unique experience of the miracle of life – the newborn calves, lambs, piglets, ducklings and chicks are always a hit for Fairgoers of all ages. Experience the birth of a calf with “Bessie,” K-State’s birthing simulator cow.

Hours/Location: 9 a.m. to 8 p.m. at the corner of 20th Ave. and Ft. Scott Blvd.



MILKING PARLOR

Sponsored by Southwest Dairy Farmers and Kansas Dairy

This live exhibit is narrated by a Kansas dairy professional who walks students through the milking process, the life cycle of a dairy cow and answers questions about milk’s journey.

Hours/Location: Demonstrations are at the top of the hour 10 a.m. to 2 p.m. & 6 p.m. next to Prairie Pavilion on 20th Ave.

MOO U TOURS

Moo U Barn Tours are a guided 45-minute walk through the world of poultry, beef, dairy, sheep, swine and rabbits. Tour guides either have a degree in agriculture or a solid background in the industry. Guides explain the complexities of the livestock industry and give examples of many ways animal by-products are used in everyday life.

Each participant gets a coupon for a free ice cream cone from the Grandstand Dairy Bar provided by **Kansas Farm Bureau**.

Hours and Location: Tours start at the top of the hour from 9 a.m. to noon and 2 p.m. to 5 p.m. in front of the Birthing Center on 20th Ave.



Education related questions?
Email melissa.blake@ks.gov

ESPORTS TOURNAMENT

Sponsored by XP League

New this year, high schools from across Kansas will compete in an esports tournament inside Dillon Hall on Friday, September 13 from 8:00 a.m. - 1:00 p.m. Watch the action unfold as these skilled players game until only one team remains.

EDUCATION CENTER

Sponsored by Kansas Farm Bureau

Students, parents and teachers can learn more about the Fair's plethora of educational opportunities at the Education Center. Activities and displays focus on the importance of pollinators, agriculture production, and the American Bison. Educational materials are also available for pick-up.

Dr. Goddard's Lab, presented by the Kansas Cosmosphere, gives live rocketry demonstrations at 10 a.m., 11 a.m., noon and 2 p.m.

Hours/Location: 9 a.m. to 7 p.m. at the intersection of Bison Boulevard and Lake Talbott Ave.

3 ways to

EARN FREE ICE CREAM!

- Fill out an Agriculture or Pollinator Passport
- Complete a Math-On-A-Stick or Ferris Wheel ABC activity in the Education Center
- Take the Moo U TOUR

*Those who show their completed work at the desk in the Education Center will receive a coupon for ice cream at the Dairy Bar under the Nex-Tech Grandstand.
Sponsored by Kansas Farm Bureau.*

AGRILAND

in the Pride of Kansas Building

Students learn how agriculture touches their daily lives – from the food they eat to the clothes they wear – through hands-on activities. They can weigh themselves on a livestock scale, milk a cow, drive a combine, see how a cotton gin works and learn about what's going on in the living soil under their feet.

STEM ACTIVITIES

KANSAS ELECTRICAL COOPERATIVE SAFETY DEMONSTRATION

AD ASTRA BUILDING
9 A.M. TO 1 P.M. MONDAY-FRIDAY

Journeyman linemen demonstrate how to tell when a line is energized, what protective gear linemen use, and what happens to a person who comes into contact with an energized line. Students can also build their own electrical circuits.

KDHE MOBILE LAB

509 BISON BOULEVARD
9 A.M. TO 8 P.M. MONDAY-FRIDAY

The KDHE Mobile Laboratory Experience (MLE) is an immersive, educational experience brought to K-12 public schools across Kansas. Featuring hands-on science experiences taught by professional educators and scientists, this onsite field trip is completely grant funded and available for a limited time. Through the wonder of science, the MLE introduces Public Health and inspires future scientists in the related sectors of biology, animal science, environmental science, genetics, chemistry and more!

Sponsored by the Kansas Department of Health and Environment

KANSAS 4-H EDUCATIONAL STEM ACTIVITIES

CENTENNIAL HALL
9 A.M. TO 2 P.M. MONDAY, SEPT. 9

Every hour interactive STEM activities will be shared at both stages in Centennial Hall. These activities are suitable for youth from 5-12 years of age. Each activity will run 30 minutes or less.



BLUE RIBBON RECIPES

Returning to the Fair this year is the Blue Ribbon Recipe Program. Eight winners from the 2023 Fair will have their recipes printed for distribution at the 2024 Kansas State Fair. Fairgoers may pick up a printed recipe card or scan a QR code for a downloadable version of the recipe at the Domestic Arts Foods Department.

Sponsored by



BEST *of the* BEST

COMPETITIVE EXHIBITS IN 2024

FIND US HERE!

Whether it is showing livestock, growing pumpkins, making pies, or even carving butter, there is something for everyone at the Kansas State Fair. Our fleet of buildings host our FAIRIFIED FAVORITE exhibits all over the grounds.

THE LAND OF OZ

The Oz Gallery has a lot to offer including Fine Arts Exhibits, Scouts Exhibits, and School Art.

The Fine Arts Department presents daily demonstrations.

PRIDE OF KANSAS

In addition to the amazing home-grown crop displays, the Ag Department is buzzing with

activity with the Butter Sculpture Contest on Saturday, Sept. 7 at 1:00 p.m. and the Best Tasting Tomato contest on Sunday, Sept. 8 at 11:00 a.m. You can also try your hand at Corn Husking on Saturday, Sept. 14 at 1:00 p.m. at the House of Capper.

The Agriculture and Floriculture Departments will provide demonstrations in the Pride of Kansas building.

YOUTH EXHIBITS

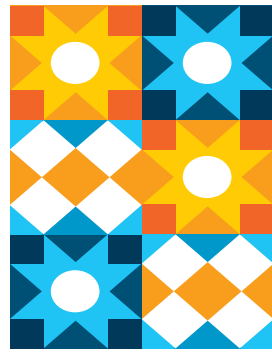
All open class departments display youth exhibits in the Pride of Kansas, Oz Gallery, and Domestic Arts buildings. Additional youth exhibits are located in the 4-H Centennial Hall, 4-H Showcase (4-H Crops), Showcase Building (FFA), and the Ag Education Barn.

PROFESSIONAL ARTS

Come see the Fair's Professional Arts galleries! Professional art exhibits are

located in the buildings north of Lake Talbott across from the 4-H Centennial Hall.

QUILT BLOCK CONTEST



Once again, Kansas quilters are expressing their State Fair memories — on fabric. These blocks will be used to create a State Fair quilt that will be auctioned off during the 2025 Fair. Stop by the Domestic Arts Building to view handiwork from all across Kansas. The quilts from our 2023 quilt block contest will be available for purchase at the auction on Saturday, Sept. 14 at 3:30 p.m. at Peoples Bank and Trust Arena.

For more information, email nancy.j.schmutz@ks.gov



GOVERNOR'S COOKIE JAR

One of the most coveted competitions in the Domestic Arts Building is the Governor's Cookie Jar. Contestants decorate a cookie jar to fit a particular theme and fill it with an assortment of cookies. The champion will present the winning cookie jar to the governor on Thursday, Sept. 12 at 1:30 p.m.

Sponsored by Hutchinson/Reno County Chamber of Commerce

COUNTY CONTEST

Wheat, sunflowers, corn, soybeans... What other Kansas crops can you think of? The Agriculture Dept. is hosting a Scarecrow building contest encouraging the use of a variety of Kansas crops in contestants' designs. Scarecrows can be seen in the Pride of Kansas Building.

Sponsored by
Tailored Roofing and Remodeling



THANKS *to*

OUR COMPETITION SPONSORS

The Kansas State Fair is thankful for all of the sponsors who make the Competitive Exhibits Department a success.

Sponsor of the
FFA Department

MKC Shared growth.
Shared success.

FARMERS.

THEY KNOW THERE IS NO PLANET B.



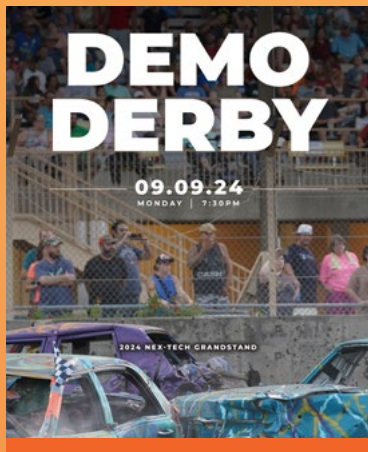
We equip farmers with the tools to best protect our soil, water and air.

MKC Shared growth.
Shared success.
www.mkcoop.com

For more information about the Fair's many Competitive Exhibit categories, visit www.kansasstatefair.com and click on Competitions. A late fee is applied to entries after this date.

CONCERT SERIES

SEPT. 6 - 15 • 2024



FAIRIFIED FREE FUN on the STAGE

Experience the best concert value of the summer on the Kansas State Fair's free stages!



THE VINCENTS

The Vincents are led by bassist Chase McRoy, flat-pickin' machine Dustin White, and drumming wild-man Kellan Moore. They have been playing together for well over 10 years, and their chemistry shows! They play everything from 50's rockabilly to modern-day hits, all while performing what they call musical... "shenanigans."

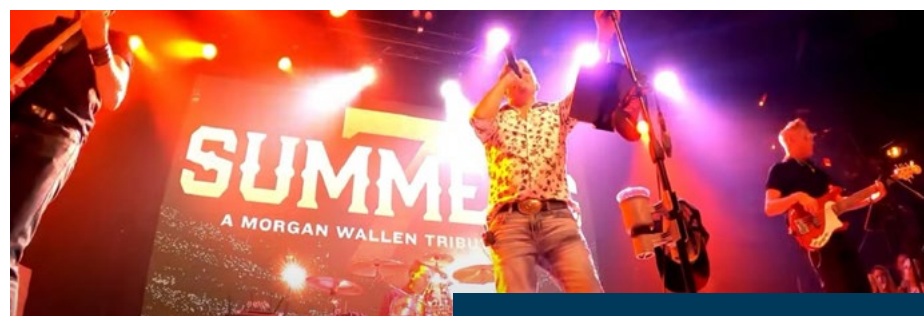
From acrobatic balancing acts to seamless instrument swapping, you never know what will happen at a Vincents show!



ROCKLAND ROAD

Rockland Road is six musicians who share the last name Martin, representing four generations of musical heritage, all vocalists who, among them, play a combined 23 instruments. It is a powerhouse group featuring soulful vocals imbued with a pure, exuberant joy worthy of the talented blood that flows through this family's veins.

On top of the family's free feature performances, they will be joining the Oak Ridge Boys on Sunday, September 15 for the final Grandstand concert of the 2024 Fair season.



Sponsored by DSI Systems

7 SUMMERS

A MORGAN WALLEN TRIBUTE BAND

7 Summers is not your typical tribute band. They let the music do the talking. The band is a group of passionate musicians who share a deep appreciation for the incredible talent and authentic sound of Morgan Wallen. Their mission is simple: to bring you the very best of Morgan Wallen's music, paying homage to the undeniable charisma and raw emotion that make his songs resonate with so many.

For more information about Free Stage events scan here!



FREE PUBLIC PARKING LOT A (ENTER FROM MAIN ST)

FREE PUBLIC PARKING LOT B (ENTER FROM PLUM & 26TH ST)

25TH AVE

24TH AVE

23RD AVE

22ND AVE

21ST AVE

20TH AVE

19TH AVE

MAIN ST

MAIN ST

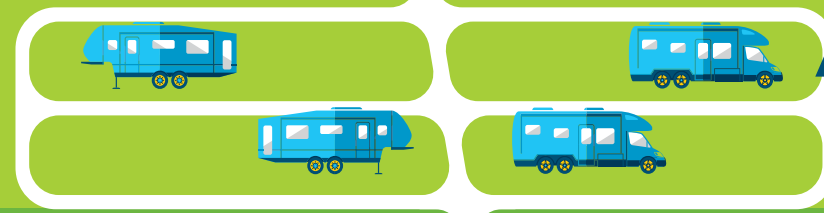
ASH ST

N WALNUT ST

N POPLAR ST

FORT SCOTT BLVD

PONY EXPRESS ROUTE



MIDWAY RIDES & ATTRACTIONS

STATE FAIR ROAD

YELLOW PARKING (PERMIT REQUIRED)

GREEN PARKING (PERMIT REQUIRED)

GREEN PARKING (PERMIT REQUIRED)

4-H SHOWCASE

ENCAMPMENT BUILDING

4-H CENTENNIAL HALL

KANSAS LARGEST CLASSROOM LITTLE RED SCHOOL HOUSE

YELLOW PARKING (PERMIT REQUIRED)

MAINTENANCE SHOP



4-H CENTENNIAL HALL

AGRICULTURE EDUCATION EXHIBITS

CHAMPION ANIMAL EXHIBIT

FAMILY VARIETY THEATER BISON ARENA

TAN PARKING (PERMIT REQUIRED)

HUTCH FIRE STATION #1

PROFESSIONAL ARTS



LOWEN CORP FREE STAGE

KANSAS SHOWCASE EDUCATION CENTER

SUNFLOWER NORTH BUILDING

SUNFLOWER SOUTH BUILDING

LAIR WHITE HOUSE

DOMESTIC ARTS BUILDING

1861 CLUB

GIANT SLIDE

KS HIGHWAY PATROL

KS LOTTERY

MEADOWLARK BUILDING

PEOPLES BANK AND TRUST ARENA

STATE FAIR MUSEUM

IDEATEK INTERNET CAFE

YE OLD MILL

COTTONWOOD COURT

BLUE PARKING (PERMIT REQUIRED)

PRIDE OF KANSAS BUILDING

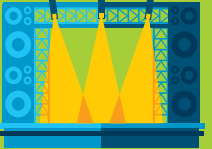
TRAIN DEPOT ADMIN OFFICE

LAIR STECKLINE FOUNTAIN

HOUSE OF CAPPER

STATE FAIR MERCHANDISE

NEX-TECH GRANDSTAND



PIG RACES PETTING ZOO

STAFF PARKING (PERMIT REQUIRED)

GOTTSCHALK PARK

LADY HOUDINI STRONG & AMAZING

OZ GALLERY

AD ASTRA PAVILION

RABBIT/POULTRY

MOO U BARN TOURS

WHITE PARKING (PERMIT REQUIRED)

DAIRY TIE BARN

MILKING PARLOR

PRAIRIE PAVILION

LIVESTOCK ANNEX

BIRTHING CENTER

SHEEP, SWINE, & GOATS

CREDENTIAL OFFICE

EXPO CENTER

EXPO II

PURPLE PARKING (PERMIT REQUIRED)

HORSE BARN

FEED BARN



KANSAS STATE FAIR

2024

FAIRGROUNDS MAP

PURCHASE TICKETS:
1 • 3 • 4 • 5 • 7 • 8 • 9

DRIVE ENTRANCE ONLY:
2 • 6 • 10 • 11



GATES



GRANDSTAND TICKETS



INFORMATION



ATM MACHINES



ADA ACCESSIBLE PARKING



FIRST AID



AED DEFIBRILLATOR



SMOKING AREA



PUBLIC RESTROOMS



SPECIAL ATTRACTIONS



POLLINATOR GARDENS



NURSING MOTHERS' ROOMS



EDUCATION CENTER



TRAM ROUTE



TRAM STOP



MOTORCYCLE PARKING



23RD AVE



FREE PUBLIC PARKING LOT C

PLUM ST

TAN PARKING
(PERMIT REQUIRED)

MEDIA AND VIP PARKING

WILL CALL

GATE 9

PLUM ST

GATE 10

NORMAN RD

ALLEZ-OOPS!

Step into the whimsical world of Allez-OOPS! with Rob Lok. Creating a joy-filled spectacle of circus skills and interactive fun. Blending circus thrills, fast pacing, and spontaneous comedy, this high-octane slapstick spectacle excites audiences of all ages with absurd sight gags and visual silliness. Allez-OOPS! is a guaranteed crowd favorite: family-friendly, hilarious, and a whole lot of fun!



LADY HOUDINI



With over 2,743 Water Torture Cell escape attempts, Lady Houdini has certainly earned her title. In 2012, she broke the immortal Harry Houdini's record for the most Water Torture Cell escapes ever performed, which historians and magic aficionados worldwide estimate to be just over one thousand.

Experience the magic of Laura J's awe-inspiring aerial stunt theatrics! With over thirteen years of experience on the stage, Laura has honed her skills as a straps artist, pole athlete, trapeze dancer and, most recently, upside-down loop walking!

**TWO POWERFUL FEMALE PERFORMERS
ONE ELECTRIFYING STAGE!**

SPECIAL ATTRACTIONS

ROVING ACTS

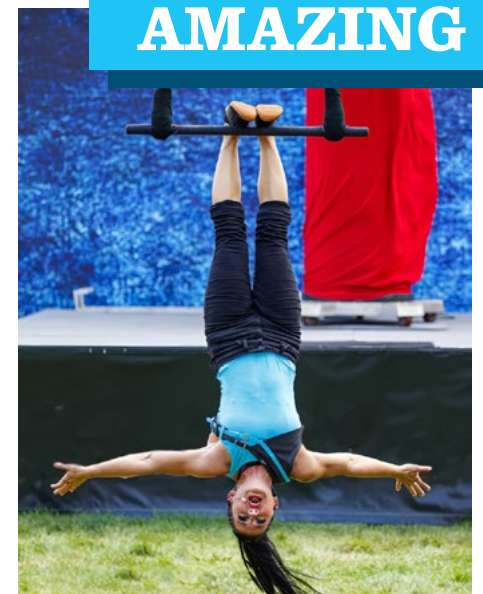
DINO + REFUGE



Embark on a prehistoric adventure with a state-of-the-art Animatronic Dinosaur Exhibit and life-like dinosaurs of all sizes!

The Dino Refuge will be located by Lake Talbott and will include Baby Dinosaur Encounters, Large Dinosaur Encounters and a Giant Egg Photo Prop. A Strolling Dinosaur will make an appearance at the Education Center during each of the weekdays around 12:30 p.m. when school groups arrive.

STRONG & AMAZING



Sponsored by



OUR DAY SPONSORS

Our Day Sponsors are important to keeping the Fair running.
A few even offer special deals on gate admission!

SEPT. 6

FRIDAY



SEPT. 7

SATURDAY



SEPT. 8

SUNDAY



SEPT. 9

MONDAY



NEW

SEPT. 11

WEDNESDAY



SEPT. 13

FRIDAY



SEPT. 14

SATURDAY



NEW

SEPT. 15

SUNDAY



Explore Kansas while you attend the Fair! Find new and fascinating places in Kansas and plan your next trip around the Sunflower State! So many things to see right here in our part of the prairie! Sept. 14 & 15 in the Oz Gallery!



Celebrating **OUR** SPONSORS



Grandstand & Official Cell Phone Provider

PLATINUM



LED Screen Sponsor



Dillons Dollar Day



Tram Sponsor



Official Lawnmower Supplier



Official Free Wifi & Internet Cafe & Reno County Youth & Staff Shirts



KDADS Young at Heart Day Sponsor



Education Partner



Day Sponsor



Kansas Star Casino VIP Deck & Party Pit



Ike the Bison Mascot & Official Apparel



Official Vehicle Provider



Lowen Corporation Free Stage & Marketing Partner



Fairgrounds Screens



Grand Drive Sponsor



Day Sponsor & Legislative Lunch



Arena



Official Tractor & Gator UTV Supplier



Main & Plum Street Digital Signs



Community Partner



West Side Grandstand Screen

GOLD



Day Sponsor



LED Screen Sponsor

DSI Systems
Global Direct
Marketing

Sponsoring
7 Summers



Scarecrow
Contest



Gottschalk Park
Entertainment



Social Package



Day Sponsor



Grand Drive
Sponsor



WICHITA STATE
UNIVERSITY



WICHITA STATE UNIVERSITY
FOUNDATION AND
ALUMNI ENGAGEMENT

Day Sponsor

SILVER

- AGCO
- AQUA HAVEN
- CELLULAR SALES OF KANSAS, LLC
- CONTINENTAL SIDING
- DISH
- HUMAN TOUCH
- KANSAS ELECTRIC COOPERATIVES
- KANSAS STRONG - KANSAS OIL & NATURAL GAS PRODUCERS
- LEVEL UP KANSAS
- NEXTERA
- PROFASHION INC. | NOA
- SHADES AND SHIRTS
- SUPERIOR BOILER
- SUPERIOR SLEEP
- THRASHER
- U.S. ARMY
- WELLCARE AND SUNFLOWER HEALTH PLAN
- WHITE STAR MACHINERY

BRONZE

- AETNA
- ELLIOTT MORTUARY
- HEADQUARTERS KANSAS
- HOLIDAY INN EXPRESS HUTCHINSON
- HUTCHINSON/RENO COUNTY CHAMBER OF COMMERCE
- INSTANT SHINE CLEANERS
- KANSAS FAIRS & FESTIVALS ASSOCIATION
- LUTHERAN LAYMENS LEAGUE
- SOUTHWEST DAIRY FARMERS
- WALD FAMILY FOODS

MEDIA PARTNERS

- WYNONNA JUDD WITH KIMBERLY PERRY
KWCH KVWF KKLE
- GOO GOO DOLLS
KEYN KHYM
- LA ALIANZA NORTEÑA WITH GRUPO LOS DE CHIWAS
LaRaaza KGGG KYQQ
- DEMO DERBY
KSGO KQAM
KSN KXKU
- LET'S SING TAYLOR A LIVE BAND EXPERIENCE
KYEZ
- CASTING CROWNS WITH KATY NICHOLE
KSAL
- BROADWAY'S ROCK OF AGES BAND
KSN KWME KBOB
- POP EVIL WITH DIAMANTE
KNZS KLBG KSCW
- RILEY GREEN WITH ELLA LANGLEY
KZSN
- THE OAK RIDGE BOYS WITH ROCKLAND ROAD
KWLS KWCH

The GRAND DRIVE

25TH YEAR

Celebration

This year marks the 25th Anniversary of the Youth Livestock Show, The Grand Drive. The show takes place the first weekend of the Kansas State Fair and is attended by over 800 youth from around the state.

Showmanship of Goats, Swine, Sheep, and Beef takes place on Friday, Sept. 6. Market shows will be Saturday, Sept. 7 and the Breeding shows will run Sunday, Sept. 8.

The Grand Champions will be selected on Saturday, Sept. 7 at 6 p.m. following a performance by The Peterson Brothers. Walton Webcasting will live stream the weekend shows, or you may follow the Grand Drive on Facebook.



SPECIAL OLYMPICS



In 2020, the “Kansas Special Olympics Champion Livestock Show” was added to The Grand Drive. The Special Olympics Showmanship allows livestock exhibitors to coach individuals on how to show goats or cattle and participate in the Kansas State Fair. Many of the individuals made a special connection with their coaches and animals.

In 2020, 5 athletes participated. In 2021, the show started to grow with the great support of Cargill as a new sponsor. In 2023, the show grew to 19 athletes with the added option to show cattle or goats. This year, the show will take place on Friday, Sept. 6 at 1:30 p.m.

Sponsored by Cargill Protein



THANK YOU!

LIVESTOCK SPONSORS



AGCO
AGRIFINANCIAL
TROJAN SPECIALTIES
HIGH NOON FEED
DEWEZE

FRESH2O
CUMMINGS CAROUSEL
HIGH CALL OUTFITTERS
SULLIVAN SUPPLY
MG HAY FARMS



Best-In-Class Equipment



Kansas Rural Communications



Agriculture is how Kansas feeds the world.



At Cargill, we nurture relationships with Kansas farmers and ranchers to help nourish the world in safe, sustainable ways. Our operations contribute 4,000+ jobs statewide, in beef processing, livestock and poultry feed production, plus grain milling and marketing. And the best is yet to come.



Let's grow a stronger Kansas!
Learn more at
Cargill.com/Kansas



Career Opportunities Available
and Great Benefits for Your Future...
Consider Joining Our World Class Operation!
EEO: VETS AND DISABILITY



Rancher Trailer



Dump Trailer



Wide Stock Trailer

Quality Products

in the Trailer, Ag, Forklift, and OEM / Government Industries.



7500 VT



6200 Disc



5000 Grain Drill

Quality People

Join Our Team to Work with Industry Experts!



Quality of Life

Supporting the Communities of the Team that Support Us!



www.landoll.com/careers 1900 North Street | Marysville, KS 66508 | Ph: 785-562-5381



FEATURED FLAVOR

GRILLED CHEESE SLAMMER Mac & Cheese Food Truck

Feelin' cheesy? Try a grilled cheese sandwich, filled with BBQ pork, mac & cheese and fried pickles. Served on texas toast with a side order of tater tots, this slammer is a Fairified must try for any foodie.



S'MORE QUESADILLA Dusek's Quesadilla Trailer



Made with delicious chocolate and marshmallows- melted into a soft creamy delight – drizzled with more chocolate and mini marshmallows, this S'more Quesadilla is a must try for any Fairgoer!

BRISKET SAUSAGE SANDWICH Carrie's Beer Garden

Savor the flavors of summer with a Barbecue Burnt End Brisket Sausage Sandwich. Featuring smoky, tender brisket sausage nestled in a soft New England roll, topped with a vibrant and crunchy summer slaw.



PRETZEL-WRAPPED PICKLE Brackett Concessions

A pretzel-wrapped pickle is a unique snack that combines the crunchiness of a pickle with the soft, chewy texture of a pretzel. The result is a savory, tangy treat that's perfect for dipping in mustard, cheese sauce, or ranch.



TACO BURGER SLIDERS Charlie's Wine & Beer Garden

A four pack of Taco Burger Sliders on pillow-soft, Sweet Hawaiian slider buns. The sliders will provide your tastebuds with a range of amazing flavors.



CHAINSAW ARTIST

Add the chainsaw artist demonstration north of Lake Talbott to your Fairified Fair Favorites! These talented artists turn massive logs into incredible sculptures right before your eyes. It's a fantastic experience for the whole family! Catch the sawdust magic and see artistry in action daily.

*Sponsored by Star Lumber
Leech Adhesives*



FAIRIFIED BUZZ-WORTHY

PRONTO PUP EATING CONTEST

Here's an excuse to eat all the Pronto Pups you physically can in 10 minutes. The contest takes place on Sunday, September 15 at 12:00 p.m.



*Sponsored by D&J
Pronto Pup*

SPECIAL EVENTS

CHIEFS RED FRIDAY

Join KC Wolf and the Rumble Drumline on Chiefs Red Friday by showing your support for the Red Kingdom. Wear your Chiefs pride and don't forget to snag a selfie with KC Wolf as he roams the grounds. In addition to photo opportunities with our favorite Wolf, stop by the House of Capper and take a picture with the team's most recent pieces of hardware. This year, the trophies from SuperBowl 57 and Superbowl 58 will be on display!



NEW

This year, we are joined by Chiefs radio personality, analyst, and insider Pete Sweeney. Since 2014, Sweeney has been tracking and reporting on the Chiefs on widely recognized platforms such as KSHB41 and 810 Sports Radio in Kansas City and Vox Media's Arrowhead Pride.

BACK TO BACK CHAMPIONS

On top of these unforgettable opportunities, gate admission is only \$2 for PlayOn members who show their app at the gate on Friday, Sept. 13. Visit www.kslottery.com to become a member for free.

Sponsored by

**KANSAS
LOTTERY**

SEPT. 8

PEDAL PULL CHAMPIONSHIP

Sunday, Sept. 8
1:00 p.m. - 5:00 p.m.

Location: Peoples Bank
and Trust Arena

Help support our
mighty tractor pullers
as they pedal a sled as
far as their strength will
take them.

Sponsored by Cellular Sales



SEPT. 9

SQUARE DANCING

Monday, Sept. 9

11:00 a.m. Line Dancing--See & Do
12:00 p.m. Square Dance Demo
1:00 p.m. Square Dancing--See & Do
2:00 p.m. Line Dancing--See & Do
3:00 p.m. Square Dancing--Come & Try
3:30 p.m. State Fair Promenaders
Square Dance Club

Location: House of Capper

KID'S LIPSYNC

(Ages 5-10)

Monday, Sept. 9
6:00 p.m. - 7:00 p.m.

Location: Lowen Corporation
Stage at Lake Talbott

Sponsored by HutchRec

SEPT. 10

SWIFTIES PUB CRAWL

Tuesday, Sept. 10
4:00 p.m. - 8:00 p.m.
Location: State Fair Grounds
*Participating vendors only
Sponsored by Wald Family Foods

TASTY TUESDAY

Tuesday, Sept. 10
ALL DAY

\$2.00 concessions at participating vendors!
Pick up a flyer at the gate.



SEPT. 11

SHOP 'TIL YOU DROP

Wednesday, Sept. 11
ALL DAY

Participating Vendors are offering discounts on selected merchandise.
Pick up a flyer at the gate!

KID'S LIPSYNC

(Ages 11-17)
Wednesday, Sept. 11
6:00 p.m. - 7:00 p.m.

Location: Lowen Corporation Stage at Lake Talbott
Sponsored by HutchRec

SEPT. 12

PUB ROCKERS PUB CRAWL

Thursday, Sept. 12
4:00 p.m. - 8:00 p.m.
Location: State Fair Grounds
*Participating vendors only
Sponsored by Wald Family Foods

SEPT. 14

PARTNER CALLING CONTEST

Saturday, Sept. 14
1:30 p.m. - 2:30 p.m.
Location: Lowen Corporation Stage at Lake Talbott
Sponsored by Senior Center at Elmdale Park

SEPT. 15

OUTDOOR AUTO SHOW



Sunday, Sept. 15
8:30 a.m. - 4:00 p.m.

Location: Administration Building Parking Lot

**SPECIAL*
EVENTS**

**Please note, not all special events are listed on this page. For more information about Fair events visit the Kansas State Fair website or download our mobile app.*

Located at 212 Cottonwood Ave on the Kansas State Fairgrounds

The *Number 1*

— reason to —

LOVE the NEW 1861 CLUB

Visit Our
Website
for info on
Live Music,
Door Prizes
and more!



1. *You make a difference!*

Funds raised at the 1861 Club are put back into projects which improve the Fairgrounds, these improvements are enjoyed by thousands of visitors each year. So, enjoying the 1861 Club during the Fair and year-round supports the Foundation's mission: To further the renovation, construction, preservation and beautification of the Kansas State Fairgrounds.

Brought to you by the Kansas Fairgrounds Foundation

Join us at the

IdeaTek INTERNET CAFE

Come chill out at IdeaTek's Internet Cafe
located across from the Domestic Arts Building!

WI-FI



SEATING



CHARGING



PRIZES



FANS



YEARS OF
INTERNET FREEDOM

For the past 25 years, we've been removing barriers so all Kansans can have access to high-speed fiber internet, no matter where they live or work.



ideatek™

ideatek.com | 620-543-5506





That's my friendly banking experience!

At **RCB BANK**, you will find supportive staff and responsive customer service.

Visit us today to see why our customers always say, *"That's my bank!"*

RCBbank.bank | 855.BANK.RCB

**RCB
BANK**

That's my bank!

MEMBER **FDIC**