

Venue GUIDE





THE COMMUNITY'S GATHERING PLACE

Perfect for weddings, meetings, parties, retreats, fundraisers, trade shows, reunions, dinners, dances, auctions, concerts, animal & livestock shows, and more!

With over 40,000 ft² of indoor space and two magnificent outdoor arenas with seating, all on 83 beautiful park-like acres, the Kootenai County Fairgrounds has a wide variety of spaces to fit almost any event and budget.

We make remaining an attractively priced, year-round event facility for the community a top priority, which is why we offer flexible event planning- so you can choose the services and add-ons that best fit you!

Planning a grounds-wide show? Let us craft a proposal tailored to exceed your expectations. Enjoy special discounts when you book multiple spaces or dates!

- 7 Event Buildings (each comfortably seating 10 - 700+ guests)
- 20+ Acres of Grassy Outdoor Space
- Main Arena/Grandstands
- Small Arena
- RV Parking





Jacklin Event Building 25

SQUARE FEET: 16,500 (110' x 150')

OCCUPANCY: 650 banquet, 2,000 theater

IDEAL FOR: Large fundraisers, trade shows, expos, sales

INCLUDES:

- Heating, restrooms, handicap accessible
- 3 overhead garage doors and walk-in doors
- Trade Show: 84 10x8 booths

RATES:

- Daily Rental: \$1,200/event day
- Move-In/Move-Out Days: \$550/day
- Non-Profit Rate: \$1,000/event day
- Pipe & Drape Perimeter: \$520



Event Building 1

SQUARE FEET: 9,600 (80' x 120')

OCCUPANCY: 350 Banquet, 500 theater

IDEAL FOR: Wedding receptions, fundraisers, trade shows

INCLUDES:

- Gas heat, restrooms, handicap accessible
- Optional soft canned-lighting on dimmer
- Trade Show: up to 55 8x8 & 10x8 booths
- 30'x30' concession area available for additional fee

RATES:

- Daily Rental: \$750/event day (\$95/hr)
- Move-In/Move-Out Days: \$300/day
- Non-Profit Rate: \$600/event day
- Pipe & Drape Perimeter: \$360



EVENT BUILDING 2

SQUARE FEET: 2,400 (40' x 60')

OCCUPANCY: 100 banquet, 175 theater

IDEAL FOR: Small gatherings

INCLUDES:

- Heating, restrooms, handicap accessible

RATES:

- Daily Rental: \$450/event day
- Move-In/Move-Out Days: \$200/day
- Non-Profit Rate: \$360/event day



STAMPEPE ROOM

SQUARE FEET: 1,600 (40' x 40')

OCCUPANCY: 50 dining

IDEAL FOR: Small luncheons, meetings, hospitality suite for large events

INCLUDES:

- Cement floor; portable fireplace; restrooms
- Combination of chairs & tables

RATES:

- Daily Rental: \$350/event day
- Move-In/Move-Out Days: \$100/day
- Non-Profit Rate: \$220/event day
- Use of kitchen additional \$100 & deposit



EVENT BUILDING 3

SQUARE FEET: 5,000 (50' x 100')

OCCUPANCY: 275 banquet, 600 theater

IDEAL FOR: Weddings, meetings, parties

INCLUDES:

- Heating, restrooms, handicap accessible

RATES:

- Daily Rental: \$525/event day
- Move-In/Move-Out Days: \$250/day
- Non-Profit Rate: \$420/event day

COMBO 1,2&3 BUILDINGS

SQUARE FEET: 17,000

OCCUPANCY: 3,348 standing room

IDEAL FOR: Trade shows, swap meets, sales, expos

INCLUDES:

- Heating, 2 separate sets of restrooms, handicap accessible, concrete flooring

RATES:

- Daily Rental: \$1,400/event day
- Move-In/Move-Out Days: \$600/day
- Non-Profit Rate: \$1,120/event day



ADDITIONAL RENTALS

EVENT BUILDING 7

SQUARE FEET: 3,600 (36' x 100')
OCCUPANCY: 200 dining, 340 theater
RATES: Daily \$1250 Move-In \$70,
Non-Profit \$1200
Pipe & Drape \$272

EVENT BUILDING 17

SQUARE FEET: 3,000 (30' x 100')
OCCUPANCY: 165 dining, 288 theater
RATES: Daily \$200, Move-In \$75,
Non-Profit \$160
Pipe & Drape \$260

EVENT BUILDING 19

SQUARE FEET: 3,040 (32' x 96')
OCCUPANCY: 176 Banquet, 288 theater
IDEAL FOR: Meetings, club activities, parties
RATES: Daily \$350, Move-In \$1175
Non-Profit \$280



BARN 10

WOOD PLANK ISLE, DIRT FLOOR
SQUARE FEET: 2,880 (30' x 96')
RATES: Daily \$400 Move-In \$150
Non-Profit \$325



BARN 15 DRAFT HORSE BARN

SQUARE FEET: 7,200 (60' x 120')
RATES: Daily \$250, Move-In \$75,
Non-Profit \$200



FIRST INTERSTATE PAVILION

PICNICS, REUNIONS, WEDDINGS

50' x 50' (2,500 ft²)

RATES: Daily \$150, Move-In \$50

Non-Profit \$120

Rate includes portable bathroom, 8 picnic tables,
& two 8' long tables



FINDLAY ARENA

300' X 200' (60,000 ft²)

COVERED SEATING: 1,200 people

UNCOVERED SEATING: 1,400 add'l people

Concession space and beer garden available but food/beverage vendors required to have a separate contract

RODEO ARENA ONLY:

- Daily Rental: \$750/event day
- Move-In/Move-Out Days: \$250/day
- Non-Profit Rate: \$600/event day

RODEO ARENA & GRANDSTANDS:

- Daily Rental: \$1,250/event day
- Move-In/Move-Out Days: \$300/day
- Non-Profit Rate: \$1,000/event day

RODEO ARENA & GRANDSTANDS FOR TICKETED EVENT:

- Daily Rental: \$1,750/event day
- Move-In/Move-Out Days: \$450/day
- Non-Profit Rate: \$1,400/event day



NORTH ARENA & BARN

180' X 300' Open Arena

BLEACHER SEATING: Approx. 100 people

Concession space available but vendors required to have a separate contract



IDEAL FOR: Horse shows of all sizes

INCLUDES: Warm up arena, ample parking and stalling, restrooms with showers

RATES:

- Daily Rental: \$350/event day
- Move-In/Move-Out Days: \$100/day
- Non-Profit Rate: \$260/event day
- Hourly Rate: \$50/hour
- Additional Bleachers available at \$50 per set



MAIN MIDWAY

The heart of the Fairgrounds. Perfect for wedding venues or community events.

- Daily Rental: \$300/event day
- Move-In/Move-Out Days: \$50/day
- Non-Profit Rate: \$240/event day



THE PARK

This beautiful space is filled with mature trees, conveniently located near Building 1.

- Daily Rental: \$200/event day
- Move-In/Move-Out Days: \$50/day
- Non-Profit Rate: \$160/event day



NORTH MIDWAY

Beautiful area with landscaping and gardening all around. Great space for picnics, markets and more!

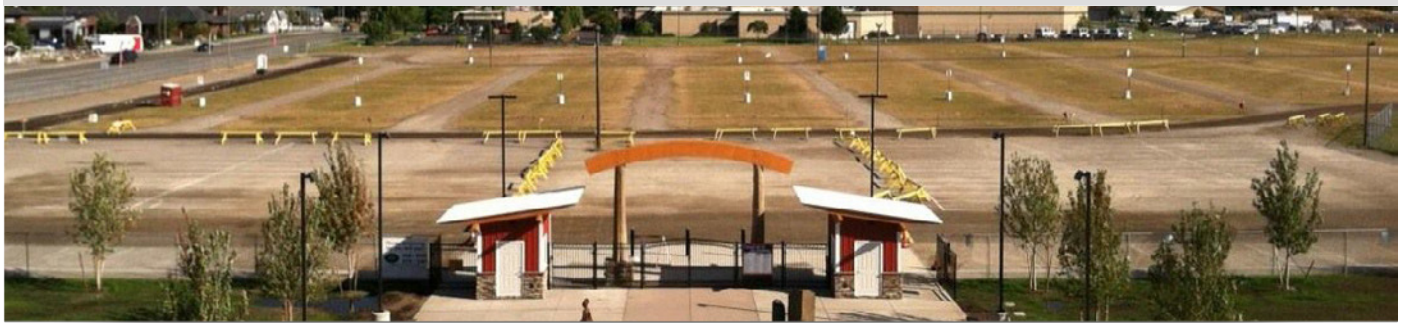
- Daily Rental: \$250/event day
- Move-In/Move-Out Days: \$50/day
- Non-Profit Rate: \$200/event day



SOUTH MIDWAY

Offers a huge green space perfect for RV Rallies, Dog Shows, Livestock Shows and so much more.

- Daily Rental: \$1,000/event day
- Move-In/Move-Out Days: \$100/day
- Non-Profit Rate: \$800/event day



MAIN PARKING LOT

IDEAL FOR: Car sales, auctions, etc.

2,000-3,000 Parking spaces

RATES: Daily \$300, Non-Profit \$240
\$100 extra for each addt'l 100x100 area

VIP PARKING LOT

SECURED FENCED AREA EAST OF SOUTH MIDWAY

RATES: Daily \$300, Non-Profit \$240

ADD-ONS

The Kootenai County fairgrounds has a large supply of tables, chairs, linens, staging and much more to make your event as personalized as you need. Call for more information on how we can assist you to make your event perfect!

Kootenai County Fairgrounds Staff

GENERAL MANAGER

Alexcia Jordan
Alexcia@northidahostatefair.com , Ext. 1001

ASSISTANT GENERAL MANAGER

Shanda Masterson
shanda@northidahostatefair.com, Ext 1002

FINANCE/EVENTS MANAGER

Deanna Taub
accounting@northidahostatefair.com, Ext 1014

MARKETING MANAGER & EXEC. ASSISTANT

Vanessa Brinkley
vanessa@northidahostatefair.com, Ext 1013

VOLUNTEER/EXHIBITS COORDINATOR

Amy Ballance
volunteer@northidahostatefair.com, Ext 1004

AGRICULTURAL EDUCATION MANAGER

Hannah Booth
hannah@northidahostatefair.com, Ext 1010

LIVESTOCK PROGRAM COORDINATOR

Blake McLean
blake@northidahostatefair.com, Ext 1015

FACILITIES OPERATIONS MGR

Greg Bennett
greg@northidahostatefair.com

EVENT SETUP COORDINATOR

Laura Burrow
laura@northidahostatefair.com

FOUNDATION DEVELOPMENT DIRECTOR

Serena Caples
foundation@northidahostatefair.com, Ext 1003



North Idaho Fair Board of Directors

Gerald Johnson, Chair
Elise Burton, Vice Chair
Joe Doellefeld
Kevin Kirking

Sharon Nelson
Linda Rider
Timothy Vulles

Todd Feusier, Alternate
Mike McLean, Alternate
Dave Paul, Alternate
Christina Petit, Alternate



4056 N. GOVERNMENT WAY COEUR D ALENE, ID 83815
PHONE: (208) 765-4969 | FAX: (208) 765-3168
WWW.KCFAIRGROUNDS.COM