



Kittitas Valley Event Center  
 901 E 7th Ave  
 Ellensburg, WA 98926  
 (509) 962-7639

# Armory and break-outs

Maximum Capacity:		
Standing		500
Theater		400
Dining		200
Class		120
<b>Main Hall</b>	100' x 34'	3400 sq. ft.
<b>Room A</b>	35' x 19'	665 sq. ft.
<b>Room B</b>	31' x 19'	589 sq. ft.
<b>Room C</b>	26' x 19'	494 sq. ft.

## 2024 Rates—Daily

- Main Hall: \$595.00  
 Includes Audio/Video equipment  
 - Data projector, overhead speakers, cordless microphones (limited number)
- Room A: \$110.00 includes built in AV
- Room B & C: \$85.00 each
- Basic set-up includes tables and chairs  
 (Up to 19 rounds in main hall, up to 10 rectangles)

**\*Note: We cannot seat more than the stated maximum capacity for the room\***

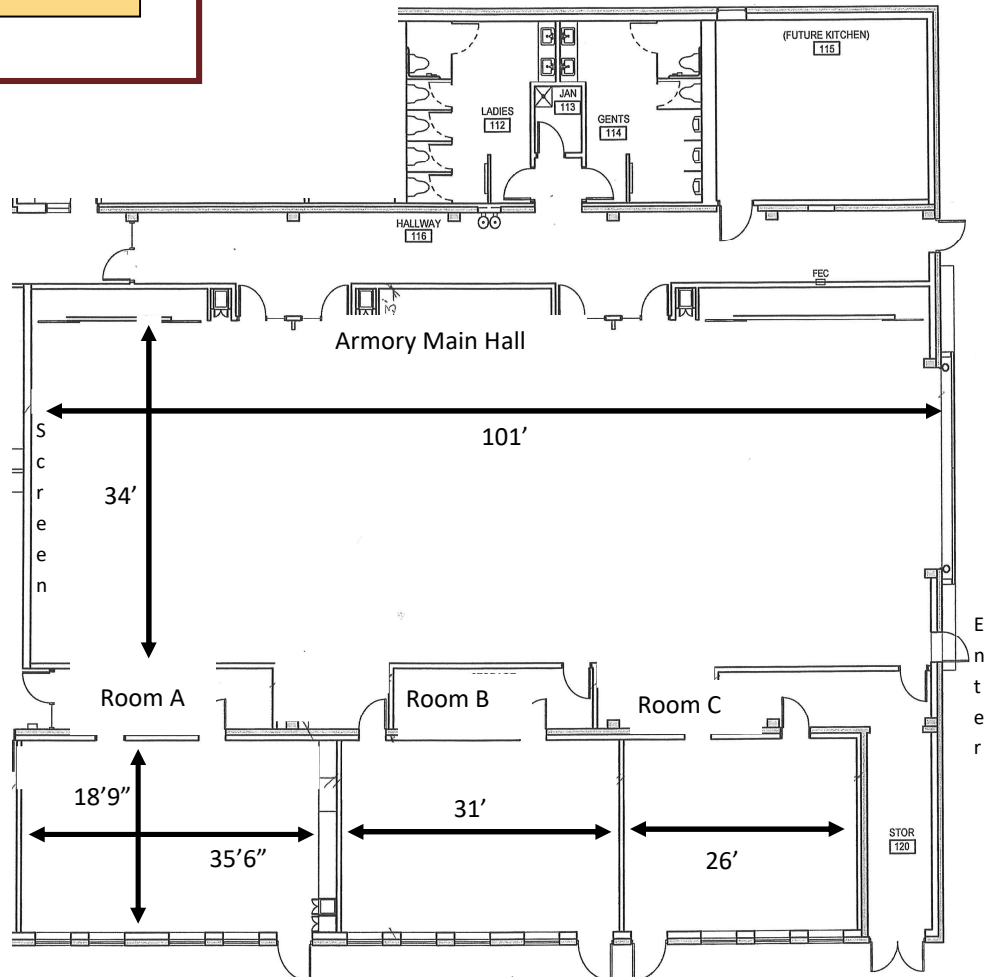
**\*\*Room setup information must be returned no later than 2 weeks prior to your event**

## Available Amenities\*

- \_\_\_ Portable Bar \$26.00 Day
- \_\_\_ Stage Risers \$25.00 Each
- \_\_\_ Stage Portable \$60.00 Day

**The following items are available at no additional charge upon request:**

- \_\_\_ Tables (up to 19 rounds, 18 rectangles)
- \_\_\_ Chairs
- \_\_\_ Coat rack
- \_\_\_ Coffee urn
- \_\_\_ Podium
- \_\_\_ US & State Flags & Poles
- \_\_\_ White board



\*Displayed prices do not include applicable sales tax of 8.4% on amenities. RV and dry camping is subject to 10.4% sales and lodging tax.