

2025 BLACK HILLS STOCK SHOW & RODEO®
SHOW-RITE YOUTH SHOWS

FRIDAY, JANUARY 31 *thru* SATURDAY, FEBRUARY 8

Youth Beef, Goat & Sheep Shows

ENTRY & SHOW INFORMATION



SHOW-RITE®
Show Feeds... Done Rite!



Schedule of events available at
BlackHillsStockShow.com | Rapid City, SD | 605.355.3861

Produced by
CENTRAL STATES FAIR, INC.  

SHOW-RITE YOUTH SHOWS

GENERAL INFORMATION

ENTRIES

- Entries are online at: <https://showman.app/shows#/black-hills-stock-show-youth-shows>
- Animals may only be entered once. This does not include showmanship.
- All shows are sanctioned by the South Dakota Junior Points Association & Beyond the Ring Junior Livestock Association.
- Shows are for ages: 8-21 years old as of January 1, 2025.
- No refunds will be issued in the event an exhibitor scratches from the show.

LIVESTOCK HEALTH REQUIREMENTS

- South Dakota law requires all animals to have a current health certificate when being exhibited at a fair or livestock exposition.
- Health certificates need to be issued within 30 days and presented in hard copy at the show. Electronic copies can be sent to paige@blackhillsstockshow.com and printed by show management until January 29th.

PAYOUT PROCESS

- Payouts will be processed following the conclusion of the BHSS, no earlier than February 12th, 2025. Checks will be mailed to exhibitors.

SHOWMANSHIP AGES

- Seniors: 14-21
- Juniors: 11-13
- Beginners: 8-10

NEW IN 2025

- Blocking Chute Fees
 - Blocking Chute will be defined as any hard/fixed bottom chute that are outside of your designated area.
 - During registration on the: \$40
 - During Check-In: \$50

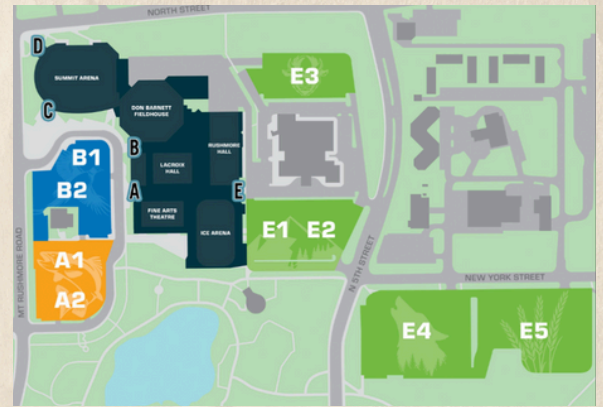


SHOW-RITE YOUTH SHOWS

GENERAL INFORMATION

DIRECTIONS FOR LIVESTOCK ENTRANCE TO THE MONUMENT

- One-way livestock drop-off will take place on the west side of The Monument with entrance at the stoplight on North 5th Street.
- Security staff will direct trailers to the drop off location.
- Unload as quickly as possible and park your vehicle in the approved lots. Do not park and leave your vehicle next to the building. Security staff will have it towed.



PARKING

- Parking for trailers is available in lots E1 and E2, east of The Monument. Overflow parking is available in Lots E4 and E5. No parking will be allowed north of the Holiday Inn in Lot E3. Failure to remove trailers or follow these parking guidelines may result in vehicles and/or trailers being towed at your expense.

STALLING

- Stalling will be assigned by show management. If you have a family that you'd like to be stalled next to or a request, please email Paige or Casey. We will do our best to accommodate the request, but show management has final say.
- We will not be opening the barn until noon on Thursday, January 30th. If you get here early and need to get animals off your trailer before the barns open, there is room at the Central States Fairgrounds.
- Stalls will be pre-bedded. No straw is allowed in The Monument. Please only feed hay in the amount that you need for one feeding, storing loose hay is not allowed.

BARN HOURS

- Strict barn closing times will be enforced. The Monument staff reserves the right to remove anyone who refuses to leave the building at 10pm. Failure to follow their directions may result in the removal of youth show competitors from the shows.
- Walk through doors at the north east end of Rushmore Hall will be open earlier than 6am for those wishing to get in earlier. Please do not block other doors open at that time.

SHOW-RITE YOUTH SHOWS

BEEF SHOW INFORMATION

ENTRY FEES

Early Entry Fees: \$50/head, \$15/competitor for showmanship

Late Entry Fees: \$70/head, \$35/competitor for showmanship after January 22, 2025.

Entries close: Thursday, January 30th at 7pm. No day of show registration is allowed.

CHECK-IN

Thursday, January 30th, 3PM-7PM - Livestock Office, Rushmore Hall

No check in will be offered on Friday, all animals should plan to be in the barn and checked in Thursday

SHOW SCHEDULE

Friday, January 31st, 10AM - Hubbard Feeds Show Ring

Showmanship (Sr./Jr/Beginner) followed by Breeding Heifers (2024 born & 2023 fall born)

Heifer breeds: AOB (mini Hereford, red angus 1%, or anything that has registered papers, but doesn't fit), Angus, Charolais, Char Composite, (Chiangus, ChiMaine & Chi-Influenced), (Gelbvieh & Balancer), Hereford, (Limousin & LimFlex), Maine-Anjou, MaineTainer, Red Angus, Simmental, Foundation Simmental, Shorthorn, Shorthorn Plus, Commercial

Saturday, February 1st, 10AM - Hubbard Feeds Show Ring

Market Steers & Heifers(2023 born) followed by Bred Heifers

Steer breeds: Market Heifer (not split by breed), Angus, (Charlois & Char Composite), (Chiangus, ChiMaine & Chi-Influenced), Hereford, (Maine-Anjou & MaineTainer), Red Angus, Simmental, Shorthord, Shorthorn Plus, (Limousin & LimFlex), (Gelbvieh & Balancer), Commercial

Bred Heifer breeds: Angus, Charolais, Char Composite, (Chiangus, ChiMaine & Chi-Influenced), (Gelbvieh & Balancer), Hereford, (Limousin & LimFlex), (Maine-Anjou & MainTainer), Red Angus, Simmental, Foundation Simmental, Shorthorn, Shorthorn Plus

PRIZES AND PREMIUMS

Market Show & Breeding Heifer:

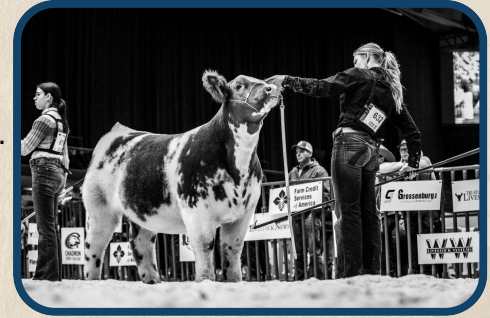
- Overall Payout is as follows: 1st \$1,000 - 2nd \$750 - 3rd \$500 - 4th 350 - 5th \$250
- Class payouts depend on number of entries - pay out top 5 places per class, overall champion and reserve
- Banners for top 5 Market Steers, Market Heifers and Breeding Heifers

Bred Heifers:

- Overall Payout is as follows: 1st \$750 - 2nd \$500 - 3rd \$300 - 4th \$200 - 5th \$100
- Class payouts depend on number of entries - pay out top 5 places per class, overall champion and reserve
- Banners for top 5 Bred Heifers

Showmanship:

- Jackpot payout of entry fees



SHOW-RITE YOUTH SHOWS

GOAT SHOW INFORMATION

ENTRY FEES

Early Entry Fees: \$45/head, \$15/competitor for showmanship

Late Entry Fees: \$65/head, \$35/competitor for showmanship after January 22, 2025.

Entries close: Thursday, February 6th at 7pm. No day of show registration is allowed.

CHECK-IN

Thursday, February 6th, 3PM-5PM - Barnett Arena

Friday, February 7th, 8AM-8:30AM - Barnett Arena

SHOW SCHEDULE

Friday, February 2nd, 10AM - Barnett Arena

Showmanship (Sr./Jr/Beginner) followed by Market Goat & Wether Doe Show

Wether does: Must only be 2024 born

May be clipped with no more than 1-inch of leg hair length across the body

Market classes will be determined by weight (Wethers & ewes/wethers & does show together)



PRIZES AND PREMIUMS

Champion Market Goat

- Payout is as follows: 1st \$600 - 2nd \$400
- Class payouts depend on number of entries - pay out top 5 places per class, overall champion and reserve
- Banners for top 5 Market Goats

Champion Wether Doe

- Payout is as follows: 1st \$600 - 2nd \$400
- Class payouts depend on number of entries - pay out top 5 places per class, overall champion and reserve
- Banners for top 5 Wether Does

Showmanship

- Jackpot payout of entry fees



SHOW-RITE YOUTH SHOWS

SHEEP SHOW INFORMATION

ENTRY FEES

Early Entry Fees: \$45/head, \$15/competitor for showmanship

Late Entry Fees: \$65/head, \$35/competitor for showmanship after January 22, 2025.

Entries close: Thursday, February 6th at 7pm. No day of show registration is allowed.

CHECK-IN

Thursday, February 6th, unless also showing goats or you have permission from show management, no sheep will be stalled in the barn on Thursday

Friday, February 7th, Following Goat Show until 6PM- Barnett Arena

Saturday, February 8th, 8AM-9AM - Barnett Arena

SHOW SCHEDULE

Friday, February 3rd, 10AM - Barnett Arena

Showmanship (Sr./Jr/Beginner) followed by Market Lamb Show

Market lamb breeds: Hampshire, Suffolk, Crossbred, Dorset, Natural, Southdowns, Speckle Face

Market classes will be determined by weight (Wethers & ewes/wethers & does show together)

PRIZES AND PREMIUMS

Champion Market Sheep

- Payout is as follows: 1st \$600 - 2nd \$400
- Class payouts depend on number of entries - pay out top 5 places per class, overall champion and reserve
- Banners for top 5 Market Sheep

Showmanship

- Jackpot payout of entry fees

