

**DEPARTMENT O
FINE ARTS**

Superintendent:

**All entries are due to the Pavilion Annex
Saturday, July 27th from 10 am to Noon and
Sunday, July 28th from 10 am to 7 pm.**

**All entries and awards will be released on
Sunday, August 4th, following closing day of the
Fair, between 9 am and 2 pm.**

1. All entries in this department must fall into appropriate category. No paint by numbers or copies.
2. Entries may be made either by the original artist, or with the artist's permission.
3. Paintings/Art Work previously exhibited at the Grays Harbor County Fair will not be accepted.
4. All entries, should be suitably framed or matted, wired ready for hanging. (ART MAY BE DAMAGED OR DISPLAYED IN A MANNER THAT IS NOT APPEALING IF NOT FRAMED OR MATTED).
5. Children's art does not have to be framed, but mounted with a sturdy mat.
6. All entries will be judged by one (1) or two (2) judges.
7. All possible care will be exercised, but the Grays Harbor County Fair and the Department Superintendent and all volunteers assume no responsibility for the loss or damage to entries.
8. Ribbons will be awarded as follows: First - Blue ribbons; Second - Red ribbons; and Third - White ribbons. Grand Champion Rosette or First Place Rosette will be awarded in each Division with Reserve or Second Place Rosette also. There will be one (1) Best of Show over all in children 6-16 and Adults 17 and older.
9. A Daily People's Choice Award will be selected by popular vote.
10. Entry shall be the artist's own decision in one of the divisions listed or sections.

DIVISIONS:

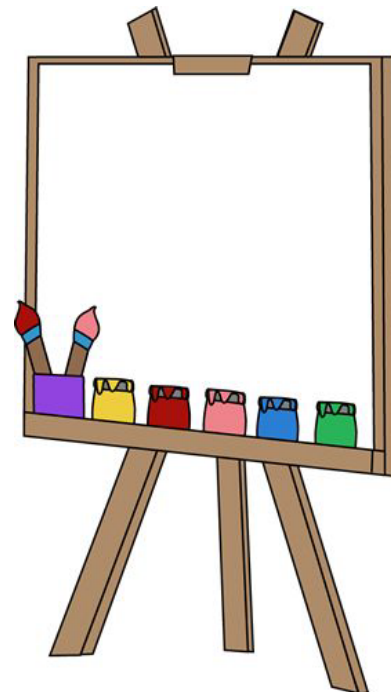
- A. Juniors – 6 – 9 years of age
- B. Intermediate 10 – 12 years of age
- C. Youth -13 to 17 years of age
- D. Adult-18-54 years of age
- E. Seniors 55 year of age and over
- F. Professional-all ages that sell art for profit

Premium Points: Blue 10, Red 8

SECTIONS

(Classification for entries will be by media only)

1. Oils
2. Acrylics
3. Watercolor
4. Black & White (ink, pencil, charcoal)
5. Pastels or Colored Pencil
6. Mixed Media (more than one medium applied)
7. Miniatures (5" x 7" maximum size)
8. Doodles/Tangle patterns (8" x 8" square maximum size)
9. Theme Art (more than one (1) panel/canvas or Fair Theme)
10. Digital Art and Graphic Art
11. Cartooning with Story Board
12. Group Section
Art work shown in a group collection
13. Paint N Sip Section
Any art work created in a group class setting and all will get a participation ribbon.



CREATIVE KIDS ART EXHIBIT

1. This contest is open to all children, ages 3 to 16.
2. All pictures must be ready for display; i.e., matted, backed or framed and wired ready for hanging
3. The Grays Harbor County Fair's general rules and contest policies will apply.
4. Judging will take place prior to the fair and will be closed to the public.
5. Entries must be brought to the Pavilion Annex Building at the fairgrounds on Saturday, July 27th, prior to the fair, from 10 am – noon or Sunday, July 28th, from 10 a.m. - 6 p.m.

PRIZES:

All entries will receive a green participation ribbon.

The 1st, 2nd, and 3rd place winners will receive rosettes.

Class 1 – Paintings, Drawings, Mixed Media, or Sculpture, **ages 3 -7**

Class 2 – Paintings, Drawings, Mixed Media, or Sculpture, **ages 8 -11**

Class 3 – Paintings, Drawings, Mixed Media, or Sculpture, **ages 12 - 16**



CREATIVE KIDS CREATIVE WRITING CONTEST

1. This contest is open to children, ages 6 to 16.
2. Entries must be original work completed within the last two years
3. Each entry is limited to two (2) pages, double spaced.
4. Printing must be 12 point or larger (easily read font) or hand printed on 8 ½ x 11” paper.
5. Illustrations are permitted but must be contained within the two pages.
6. The Grays Harbor County Fair's general rules and contest policies will apply.
7. Judging will take place prior to the fair and will be closed to the public.
8. Entries must be brought to the Pavilion Annex Building at the fairgrounds on Saturday, July 27th, prior to the fair, from 10 am – noon or Sunday, July 29th, from 10 a.m. - 6 p.m.

PRIZES:

All entries will receive a green participation ribbon.

The 1st, 2nd, and 3rd place winners will receive rosettes.

Class 1 – Creative Writing, ages **6 to 11**

Class 2 – Creative Writing, ages **12 to 16**

Some things to consider in creative writing.

- Ideas and Content
- Organization
- Conventions – grammar, punctuation, spelling, etc.



CREATIVE WRITING EXHIBITS

DIVISIONS:

- A. Juniors (ages 6-9)
- B. Intermediate (ages 10-12)
- C. Youth (ages 13-16)
- D. Adult (ages 17-61)
- E. Senior (62 & over)

All entries will be judged for blue, red, and white placings.

Note: Don't neglect the most important part of this contest... "Creative Writing". The development of your subject into a story, the creative way you express yourself, and the proper grammatical use of your words are more important to the judge than the computer printing and expensive laminating and bindings.

Rules:

1. All work must be original. Youth entries must be the work of the child. Parents, please do not help your child with the story.
2. Entries may be no longer than 8,000 words
3. Entries will be judged on:
 - Originality and creativity (40%)
 - Writing quality (appropriate to age of entrant) (40%)
 - Grammar, spelling, and neatness (20%)
4. Entries may be typed or handwritten, but must be readable by the judges.
 - a. Handwritten entries must be written in ink.
 - b. Typed entries must be double spaced, in a 12 point or larger font.
5. Entries must be written in English
6. No cursing or other content inappropriate to children
7. Plagiarism will not be tolerated, and any plagiarized entries will be disqualified
8. Multiple page entries must be bound in sheet protectors and in a report cover
9. No published work will be accepted.

