



**LIVE!**  
*at*

**HARFORD**  
COMMUNITY COLLEGE

**ERTH'S DINOSAUR ZOO LIVE!**

**FEB 1 | 3 PM**

**AMOSS CENTER**

**HarfordEvents.com**

- Alyssa B.

**“WHAT A WONDERFUL OFFICE  
WITH STAFF THAT TRULY CARES  
ABOUT THE PATIENTS!”**

Pediatric dental care for  
infants to teens, including  
those with special needs

**Growing  
Smiles**  
Pediatric Dentistry



**OUR DENTISTS**

Diana Capobianco, D.D.S.\*  
Todd Lyman, D.D.S.\*  
Chris Bailey, D.D.S.\*  
Roxanne Clarke, D.D.S.\*  
Marina Meshreky, D.M.D.

\*Diplomate of the  
American Board of  
Pediatric Dentistry.

**3 CONVENIENT LOCATIONS**

**WHITE MARSH**  
General Office: 410-697-9000  
Orthodontics: 410-697-9030

**BEL AIR**  
410-569-6700

**HAVRE DE GRACE**  
443-526-7900

**HEALTHY SMILES  
GROW HERE**

**GROWINGSMILES.COM**



## WELCOME

Thank you for joining us at today's performance. We are very excited to bring you a great lineup of Live! entertainment this season including concerts, family programming, dance and theater productions, exhibits, cultural arts, and community celebrations. We are so glad you are with us to experience live arts programming at Harford Community College.

Our **HarfordEvents.com** website includes all of our concert, performance, exhibit, and community event information in one place, making it easy for you to find out about the great offerings on our campus.

Our staff and volunteers want you to have the best possible experiences before, during, and after the show. Please share your suggestions about the ways we may make your experience unforgettable. Contact the Ticket Office at 443-412-2211 or email [srutherford@harford.edu](mailto:srutherford@harford.edu) with your ideas, feedback, and suggestions.

Thank you for supporting the arts in Harford County!

A handwritten signature in black ink that reads "Stacy Rutherford".

**Stacy Rutherford**  
**Director for Events & Conferencing**  
**General Manager for the APGFCU Arena**

**Special Events and Performances are made possible in part through funding from:**



These performances are supported by a grant from Maryland State Arts Council through the Harford County Cultural Arts Board. As the official county arts agency, the Harford County Cultural Arts Board is the premier local resource for arts organizations, independent artists, and the audiences of Harford County, Maryland. The government-appointed board provides grant opportunities, advocacy and administrative support; sponsors workshops, events, and promotional opportunities; and encourages and invests in the advancement of the arts for the community.

# Harford Community College Board of Trustees

Brian Walker, Chair

Sharon Markley Schreiber, Vice Chair

Maude M. CreveCoeur

Laura L. Henninger, Esq., CPA

Karen Holt

David Jimenez

Steve D. Linkous

Christopher Payne

Michael Smith

Secretary:

Theresa B. Felder, Ed.D.

President, Harford Community College

---

## **HARFORD COMMUNITY COLLEGE**

### **MISSION**

Harford Community College provides relevant, accessible education, training and cultural enrichment, connecting individuals and opportunities in an evolving world.

### **VISION**

Harford Community College is a regional leader in education and workforce development, offering transformative programs that drive individual growth and shared prosperity.

### **VALUES**

Student Centered | Communication & Collaboration  
Respect | Equity & Inclusion | Excellence



# **ERTH'S DINOSAUR ZOO LIVE (2025)**

**FEB 1 | 3:00 PM**

**AMOSS CENTER**

**Any video and/or recording of this production is strictly prohibited**

**Harford Community College is a completely tobacco-free campus.**

As a courtesy to fellow patrons, please refrain from talking during performances.

The use of photographic or recording devices of any kind is prohibited in the theater. Please silence all cell phones and electronic devices.

Please note that your attendance at this performance constitutes consent for the College taking and using photographs for promotional and other purposes.

**Red Tail Entertainment LLC  
Presents**



**Created by  
Erth-Visual & Physical, Incorporated  
Sydney, Australia**

Starring

**BRANDON GRIMES      SCOTT WRIGHT      DON MITCHELL  
                                 ERYN MALAFRONTE  
                                 CHERRIE NEALE**

Writer & Director  
**SCOTT WRIGHT**

Associate Director      Designer      Specialist Puppet Designs      Composer  
**SHARON KERR      STEVE HOWARTH      BRYONY ANDERSON      PHIL DOWNING**

National Tour Booking  
**BRAD SIMON ORGANIZATION**

National Marketing Director  
**C MAJOR MARKETING**

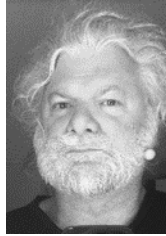
Tour Manager  
**JOHN RUEGSEGGER**

Technical Director  
**JOHN RUEGSEGGER**

General Manager  
**DAVID DENSON**

# CAST

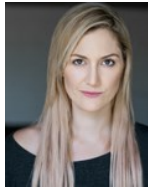
Host.....SCOTT WRIGHT  
Puppeteer.....DON MITCHELL  
Puppeteer.....BRANDON GRIMES  
Puppeteer.....ERYN MALAFRONTE  
Puppeteer.....CHERRIE NEALE



Scott Wright



Brandon Grimes



Eryn Malafrente



Don Mitchell



Cherrie Neale

## WHO'S WHO IN THE CAST

**SCOTT WRIGHT** (Host and Artistic Director). Scott is a founding member of Erth Visual and Physical Inc. He has been the Artistic Director for 35 years. Scott is a bit of a troublemaker, choosing to push himself and the company against the stream. Scott enjoys flying a little under the radar but has also created shows that have toured the world and been seen by millions. Dinosaur Zoo and it's many iterations serves as a benchmark that has inspired 100's of copy-cat shows worldwide, emerging when it did, as a completely new original piece of theatre in 2005. The show has been translated into other languages and seen in no less than 15 other countries and continents, enjoying a very healthy touring life now and into the future. The work allows Erth (a not for profit company) a relative security, through sustainable operational independence and the ability to continue to create new works that are perceived as less commercially driven, experimental works, work that explore new ideas around what the company wants to say and how it wants to say them. Scott is particularly driven and focused on the natural world, indigenous knowledge & culture and social/cultural change with an anthropological sense of investigation. Humans and all living things serve as a world of curiosity and questioning and is inspired further with the constant inclusion of young people of all ages both in presenting the work and who the work is created for. Not to say that the work isn't for adults (it is) but children do seem to be more honest and responsive and welcome tough themes that some adults might see as taboo such as grief, fear, loss and risk.

**BRANDON GRIMES** (*Puppeteer*) is a dynamic performer from Harlem, captivating audiences with a range of roles. An AMDA graduate from 2016 to 2019, Brandon honed his skills in productions like *Spelling Bee* and *Once On This Island*, guided by mentors like David Cady and Michael Perilstein. He's not just a stage actor, he has recently found a passion for puppeteering with the renowned company Erth. With an extensive theatrical background and newfound skills in puppeteering, Brandon Grimes is a standout entertainer ready to captivate audiences of all ages.

**ERYN MALAFRONTÉ** (*Puppeteer*) Eryn Malafronte is honored, thrilled, all the adjectives to be working with Red Tail and EARTH again, tricking kids into learning with the power of puppets. Most recently seen puppeteering as Alphabet in the PBS show "Reading Buddies" with Dusty and Dot seasons 1-3, or as Tip Toe the Reindeer in Macys Thanksgiving Day Parade, and pretty much every Erth tour that has toured the states, I'm proud to carry the tradition of scaring/entertaining children performing non-verbal puppets. Many thanks to these amazing companies and theaters for opening their doors to us and the families and individuals who support this show and the arts/ live theater in general, the arts need you! Enjoy the show!

**DON MITCHELL** (*Puppeteer*) is an Atlanta-based performer and poet. Don enjoys moderately short walks on the beach and has a weakness for Oreos cookies. He would like to thank his family and friends for the overwhelming support as well as Red Tail Entertainment for the opportunity to work on Erth's *Dinosaur Zoo*.

**CHERRIE NEALE** (*Puppeteer*) Cherrie is a visionary artist, a natural sculptor, and a passionate puppeteer who has dedicated her life to bringing joy and enlightenment to children all over the world. Cherrie believes that by connecting children with the wonders of nature through puppetry she can instill in them a sense of responsibility and a desire to safeguard our planet for future generations. Her work with Erth goes beyond mere theatrical entertainment; it is a call to action, urging young minds to become stewards of our environment.

**SCOTT WRIGHT** (*Artistic Director*) Scott is the co-founder and Artistic Director of Erth Visual & Physical Inc. For over twenty-five years Erth's puppetry based theatrical productions and innovative community projects have challenged and inspired audiences across the world, driven by a founding interest in natural history, indigenous folklore, sociology and urban mythology. Scott has directed the majority of Erth's productions, which now tour year-round internationally, and have featured in all major Australian arts festivals, and today the company is recognized internationally as an innovator of physical and visual theatre, and a creator of brave, unbridled work for children.

**SHARON KERR** (*Associate Director*) Sharon is Executive Director and a founding member of Erth. Originally trained as a school teacher majoring in drama, Sharon has much performance experience. Prior to helping form Erth, she spent five years in contemporary dance theater with emphasis on improvisational movement. Puppetry became a natural extension of this. Her roles within Erth are many and varied. Contributing to creative and performance direction, Sharon continues to perform whenever she can. Sharon has also steered the company for many years as its key administrator. Some of her performance highlights include her aerial harness and flying work. Memorable amongst these are from atop the sails of the Sydney Opera House, the spire of St. Paul's Cathedral in Melbourne and from the 30th floor of the Ngee Ann skyscraper in Singapore.



# Taylor Dayne

IN CONCERT  
WITH SPECIAL GUEST TIFFANY



Two for the price of one! **Taylor Dayne**, a pop icon, with over 75 million albums sold, rose to fame with "Tell It to My Heart." She's known for her powerful vocals, diverse musical style, and multiple chart-topping hits including "I'll Always Love You," "Shelter," and "With Every Beat of My Heart." Beyond music, she's an advocate for women's rights and a talented actress. Pop legend **Tiffany** has sold over 15 million albums and topped the charts with hits like "I Think We're Alone Now" and "Could've Been." Her versatile talent shines through as she effortlessly transitions from pop to country-pop and rock.

## FEB 22 7:30 PM

**APGFCU Arena**

Reserved Seating

Tickets: \$68 | \$58 | \$48 | \$38

*Prices include ticketing fees.*



THIS EVENT IS SUPPORTED IN PART BY:



**TICKETS:**

**HarfordEvents.com**

OR **443.412.2211**



For disability-related accommodations, contact 443.412.2211 at least two weeks in advance.





The **realization of your biggest dreams** often begins with a plan. Our team of independent advisors make recommendations that align with how you want to live now and in the future.



**Harford Financial Group**  
Retirement Income Specialists

[www.harfordfinancialgroup.com](http://www.harfordfinancialgroup.com)

Securities offered through Registered Representatives of Cambridge Investment Research, Inc., a Broker/Dealer, Member FINRA/SIPC. Advisory services offered through Cambridge Investment Research Advisors, Inc., a Registered Investment Advisor. Harford Financial Group and Cambridge are not affiliated.



# DSQ

DALLAS STRING QUARTET

## STRINGS UNLEASHED

A ROCK FUSION EXPERIENCE

A brand-new electric evening, perfect for a date night or the entire family! Brimming with your favorite rock songs – played on electric string instruments – your ears will be delighted, your feet will be tapping, and you won't be able to remove your eyes from the captivating stage presence that is DSQ. The electric violin and viola instrumentation will be accompanied by bass, guitar, and drums for a sonically thrilling, classic rock experience with favorites from Led Zeppelin, Metallica, ACDC, Journey, Bon Jovi, Guns N' Roses and more!

# MAR 21 7:30 PM

### AMOSS CENTER

Reserved Seating

Tickets: \$42 | \$37 | \$32

*Prices include ticketing fees.*

THIS EVENT IS SUPPORTED IN PART BY:



### TICKETS:

[HarfordEvents.com](http://HarfordEvents.com)

OR 443.412.2211



For disability-related accommodations, contact 443.412.2211 at least two weeks in advance.

**STEVE HOWARTH** (*Designer*) As a founding and fulltime member of Erth Visual & Physical, Inc., Steve designs for most of the company's productions and external commissions. From the Erth Studio/Workshop he supervises a team of artists in creating the puppets, sets, props and costumes that are on constant tour around the globe. The puppets often take the form of teeth-gnashing beasts and inflatable monsters that are the foundation of *Dinosaur Zoo*. Steve also mentors design students from tertiary institutions and assists emerging makers in the implementation of their respective crafts.

**BRYONY ANDERSON** (*Specialist Puppet Design*) Bryony is a designer, maker, artist and wannabe scientist based in the forested hills of NSW. Her puppets and constructions for visual performance have toured nationally and internationally with many Australian circus, puppetry, visual performance and theatre companies, as well as appearing in museums, festivals and documentaries. Solo exhibitions have ranged from interactive puppetry installations and handmade projection machinery to intricate illustration, all investigating a salvaged aesthetic. She has conducted community workshops in the Central Desert, rural Victoria, Western Sydney, and across the Mid North Coast of NSW. In 2011 she began working with her local community to seed a creative industry of skilled artisans making high calibre work from frugal resources. A three-year project was spawned that drew in artists, composers, scientists and over 1200 community participants, and resulted in an intricately detailed forest installation made entirely from stuff that was headed to landfill. The Frugal Forest is now on tour. [frugalforest.oneoffmastery.net.au](http://frugalforest.oneoffmastery.net.au)

**PHIL DOWNING** (*Composer*) Phil has a distinct history working with interactive multimedia. After years spent performing music, Phil set about reinventing his means of expression through music, by creating unique and obscure musical instruments. This inspiration has led to the creation of numerous soundtracks for theatrical productions (1999–2012). Delivery of video and imagery being an obvious progression, Phil has also worked with various technologies to incorporate physical interaction (with performers and audience members) into installations and performances, utilizing technologies such as infra-red, sonar and pressure sensors, Arduino programmable circuit boards and Kinect sensors. Working with Erth, Phil has developed systems for automated delivery of sound, light and visual effects, and has designed stand-alone sound systems for their various creature puppets. "This one's going to be a mad professor!" his grandma proclaimed upon his birth....She was possibly correct!

**DAVID DENSON** (*General Manager*) is an accomplished director and producer with over twenty years of experience creating live theatrical events on and off-Broadway, regionally and on tour. As Partner and Head of Productions at Red Tail Productions, David produced the world premiere of *Dolly Parton's Smoky Mountain Christmas Carol* in Boston in 2019 as well as the European premiere at London's Southbank Centre in 2022. Broadway credits include *The Kite Runner* and *Paradise Square*; he has produced national tours of *Double Dare Live!* with Marc Summers; Erth's *Dinosaur Zoo Live* and *Prehistoric Aquarium Adventure*. In 2022 he launched two new, immersive, multi-media experiences: *Lazer Invasion: A Rock-n-Roll Odyssey of Lasers, Lights, and Alien Invasions* and *Lazed & Confused: The 420 Laser Experience*. Prior to joining Red Tail, David served as the Director of Programming for the multi-venue, AT&T Performing Arts Center in Dallas, TX where he also spent two years with the City of Dallas Office of Cultural Affairs overseeing the construction and grand opening of the \$48M, 750 seat Dallas City Performance Hall in 2012.

**BRAD SIMON ORGANIZATION** (*Exclusive North American Booking*). Since 1983, The Brad Simon Organization has provided tour booking services for a diverse roster of artists and productions in a wide variety of performance venues, including performing art centers, commercial theaters, amphitheatres, arenas, festivals, fairs and theme parks. Their national and international tours have reached millions of audience members at over 1,000 commercial and non-profit venues in all 50 United States and eight provinces in Canada, plus Sydney, Australia, Singapore and other territories. They have toured 20+ productions based on top-rated television series, over 75 from regarded book titles, as well as original theatre productions, all targeted to multi-generational family audiences. The Brad Simon Organization's longevity in the touring industry is a product of their work ethic and love for presenting live performance and meaningful theatrical experiences for audiences of all ages.

**RED TAIL ENTERTAINMENT** (*Producer*) Headquartered in Fort Worth, Texas, Red Tail Entertainment has established itself as one of the industry's Top 100 Presenters with sold out engagements of *Cinderella*, *Wizard of Oz*, *Stomp*, *The Beach Boys*, *Tony Bennett*, *Harry Connick, Jr.*, *Steve Martin & Martin Short*, *The Wild Kratts*, *Daniel Tiger's Neighborhood*, *Hip Hop Nutcracker*, *Cirque Dreams*, and many more. The company continues to expand and grow, becoming a leader in producing unique live events using international talent. In addition to *Dolly Parton's Smoky Mountain Christmas Carol*, Red Tail produced the 2018 and 2019 tours of Nickelodeon's *Double Dare Live!* with Marc Summers as well as a three-month residency at the Smithsonian National Zoo in Washington, D.C. for *Erth's Dino Zoo Live*. Red Tail has also produced the U.S. tours of *Erth's Prehistoric Aquarium Adventure*, *Scooby-Doo! Live Musical Mysteries*, as well as *A Night with Janis Joplin* on Broadway, and has co-produced *The Kite Runner* on Broadway. As audiences change and new artists emerge, Red Tail Entertainment will continue to focus on producing and presenting only the best in live entertainment.

**ERTH VISUAL & PHYSICAL INC.** (*Producer*). ERTH is a company fueled by beautiful accidents; a team of creators, makers and performers pushing the limits of design, content and experience. For over twenty-five years ERTH's puppetry-based theatrical productions and innovative community projects have challenged and inspired audiences across the world, driven by a special interest in natural history, indigenous folklore, sociology and urban mythology. Today the company is recognized internationally as an innovator of physical and visual theatre, and a creator of brave, unbridled work for children. ERTH's work tours year-round internationally, has featured in all major Australian arts festivals, and has appeared at international events including the Sydney Olympic Games Opening Ceremony, Hong Kong Fringe, Galway Arts Festival (IR), Stockton International Riverside Festival (UK), Singapore Arts Festival, the Festival of Arts & Ideas (USA), Shanghai World Expo, the opening of the Mall of Qatar (UAE), and the Hampyeong Butterfly Festival (South Korea). ERTH's studio and workshop custom builds specialist creations for clients that have included the Sydney Opera House, Sydney Festival, Sydney Olympic Games, Vivid Sydney, the Centenary of Federation, the Department of Communications and the Arts, Performing Lines and The Empire Strips Back, and the company has long standing creative relationships with major museums around Australia, New Zealand and the USA. In the company's ongoing push to explore boundaries and devise new work, 2017 sees the premiere of *birdfoxmonster* - a multi-sensorial dining experience and collaboration between Erth and Studio A, which will take place at Carriageworks, and the release of *Prehistoric VR* - a 360-degree virtual reality short film for children created in partnership with renowned Australian film director Samantha Lang, and based on Erth's *Prehistoric Aquarium*.





HARFORD DANCE THEATRE PRESENTS

# RETURN TO THE CHOCOLATE FACTORY

Directed by  
Alex Hill & Tigga Smaller

When an infamous chocolate factory gets some stiff competition, Bucketts needs to breathe new life into it to stay on top. So, a new round of golden tickets goes out to find that special kid that can spice things up a bit. Join us as five new kids find themselves in familiar situations with this retelling of a classic story with a twist.

**MAY 2** | 7 PM  
**MAY 3** | 1 & 5 PM  
**MAY 4** | 1 & 5 PM

### AMOSS CENTER

Reserved Seating  
Tickets: \$20 | \$18 | \$16  
*Prices include ticketing fees.*



THIS EVENT IS SUPPORTED IN PART BY:



**TICKETS:**

**HarfordEvents.com**

**OR 443.412.2211**



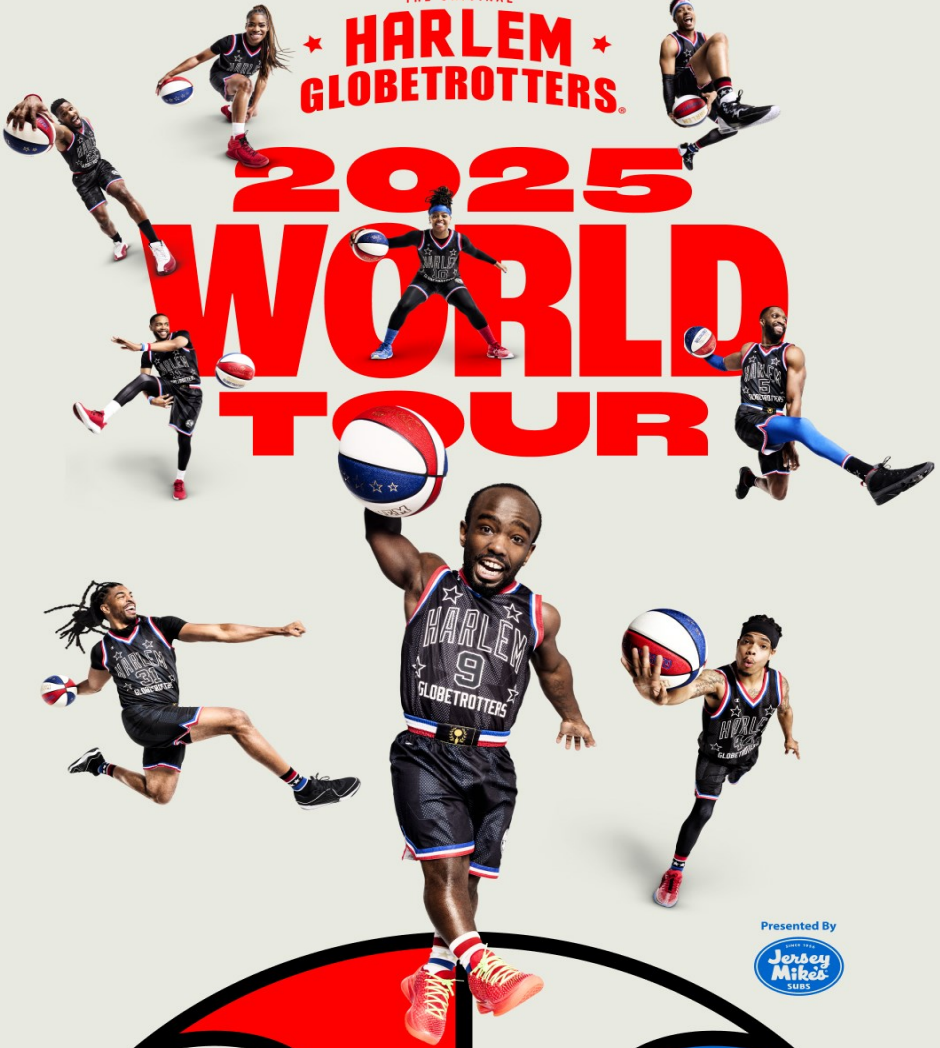
For disability-related accommodations, contact 443.412.2211 at least two weeks in advance.





THE ORIGINAL  
★ HARLEM ★  
GLOBETROTTERS.®

# 2025 WORLD TOUR



Presented By



BEL AIR, MD

FEB 18 | 7PM

[HARFORDEVENTS.COM](http://HARFORDEVENTS.COM) OR 443-412-2211

**RESERVED SEATING; TICKETS (INCLUDING FEES): \$99, \$59, \$49, \$39, \$29**

For Disability-Related Accommodations, Contact 443.412.2211 At Least Two Weeks In Advance.



# FOREVER DONNA

THE ULTIMATE DONNA SUMMER TRIBUTE | STARRING RAINERE MARTIN

Celebrate the timeless legacy of the Queen of Disco, Donna Summer. Forever Donna celebrates the life and music of the legendary singer. Rainere Martin pays homage to the iconic music and everlasting spirit of Donna Summer. Immerse yourself in the soulful renditions of Donna Summer's greatest hits, as Rainere Martin takes you on a journey back to the disco era. From "Hot Stuff" to "Last Dance", experience the magic of Donna's music like never before.

## APR 12 8 PM

**APGFCU ARENA**

Reserved Seating  
Tickets: \$48 | \$43 | \$38 | \$33  
*Prices include ticketing fees.*



THIS EVENT IS SUPPORTED IN PART BY:



**TICKETS:**  
**HarfordEvents.com**  
**OR 443.412.2211**



For disability-related accommodations, contact 443.412.2211 at least two weeks in advance.



THE  
*Susquehanna*

**SYMPHONY ORCHESTRA**  
*SHELDON BAIR, FOUNDER AND MUSIC DIRECTOR*

**HARFORD COUNTY'S  
NONPROFIT ALL-VOLUNTEER  
ORCHESTRA**



For information on concerts  
and how to get involved, visit

**[SSOrchestra.org](http://SSOrchestra.org)**



**SPECIAL THANKS**

This project has been assisted by the Australian Government through the Australia Council for the Arts, its art funding and advisory body.

**STAFF FOR *ERTH'S DINOSAUR ZOO LIVE***

**GENERAL MANAGEMENT**

David Denson

**NATIONAL MARKETING & PUBLICITY**

C Major Entertainment Marketing, Inc.

**TOUR MANAGER**

John Ruegsegger

**EXCLUSIVE TOUR BOOKING**

The Brad Simon Organization [www.bsoinc.com](http://www.bsoinc.com)

Technical Director.....	John Ruegsegger
Graphic Designer.....	Goetz Creative
Graphic Designer.....	Cramertivity
Website Design & Interactive Marketing.....	Grey Ship
Photographer.....	Christian Waits







# Mutts Gone Nuts UNLEASHED!

They'll have you at Woof!

**FEB 15**  
**3 PM**

[HarfordEvents.com](http://HarfordEvents.com)



# Mallory Lewis and Lamb Chop

*The Shari Lewis Legacy Show*

**FEB 23 | 3 PM**

[HarfordEvents.com](http://HarfordEvents.com)



**DON'T  
LET THE  
PIGEON  
DRIVE THE  
BUS!**



**THE MUSICAL!**

**JUN 1 | 3 PM**

[HarfordEvents.com](http://HarfordEvents.com)



Adams Chevrolet, Inc.

1517 Pulaski Highway

Havre de Grace, MD 21078

410-939-2255

[www.AdamsChevrolet.com](http://www.AdamsChevrolet.com)





**Vagabond**  
Sandwich **Co.**



**111 THOMAS ST. BEL AIR, MD 21014**

**410.838.1263**

**MON – SAT 10AM-9PM**



# 15TH ANNIVERSARY TOUR



The Texas Tenors are the most successful music group and third highest selling artist in the history of America's Got Talent! Since appearing on the series in 2009, JC Fisher, Marcus Collins and John Hagen are 3-time Emmy Award Winners and Billboard Magazine's #10 classical crossover artist in the world. These classically trained, versatile tenors were honored to be included among the top 50 acts in the world and the only vocal group from the USA invited to appear on NBC's America's Got Talent: The Champions. This 15th Anniversary Tour concert will include music from their new #1 album along with rousing patriotic favorites.

# APR 11 8 PM

## APGFCU Arena

Reserved Seating

Tickets: \$58 | \$48 | \$38 | \$28

*Prices include ticketing fees.*



THIS EVENT IS SUPPORTED IN PART BY:



**TICKETS:**

**HarfordEvents.com**

**OR 443.412.2211**



For disability-related accommodations, contact 443.412.2211 at least two weeks in advance.

# County Ballet

Dance Studio emphasizes the building of the dancer's physical technique, plus instills the love of the art of dance! Dance education at County Ballet is an enriching, life changing, fun activity.

**OVER 40 YEARS OF AMAZING CLASSES WITH  
OUR PROFESSIONAL STAFF**



## The Dance Shop

**Has a full selection of dancewear,  
footwear, and gifts!**

Toddlers to Plus Sizes in stock.

Serving the Greater Baltimore  
and Harford County Area

The County Ballet Dance Studio & Dance Shop  
2232 Old Emmorton Rd. Bel Air, MD 21015

410.515.0031 | 410.569.0316



countyballetdanceshop@gmail.com

**CountyBallet.com**



# BARTENFELDER SANITATION SERVICE, INC.



**Dedicated Staff Members**  
**Community Giveback**  
**Residential Services**  
**Commercial Services**  
**Dependable Service**  
**Neat Can Placement**  
**HOA Communities**  
**Dumpster Services**

**\$50 off your first  
invoice with us  
with promo code  
HCC50**

SCAN ME



410 457 5550

WWW.BARTENFELDERSANITATION.COM

*Locally Owned and Operated Since 2010*



# Jarrettsville Federal

SAVINGS & LOAN ASSOCIATION<sup>SM</sup>



MOST BANKS HAVE BRANCHES  
**WE HAVE ROOTS**

150 years of lending  
experience in  
**Harford County!**

- Low Rates
- Quick Loan Decisions
- Personalized Service!

Call 410-692-5151

3706 Norrisville Road  
Jarrettsville, MD

visit us at:  
[www.jarrettsvillefederal.com](http://www.jarrettsvillefederal.com)

NMLS#431219

Member  
**FDIC**

