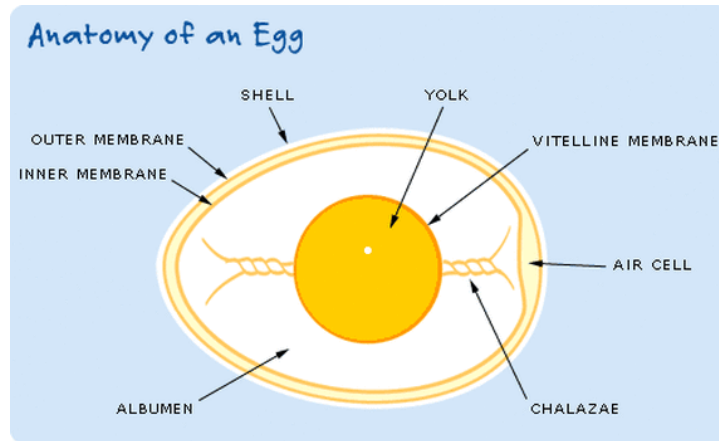


Embryology Vocabulary



Air Cell:

Pocket of air formed at the large end of an egg

Albumen:

White part of an egg (thick and thin)

Chalazae

Twisted cordlike strands of egg white used to hold the yolk in the center of the egg.

Shell:

Outside covering of an egg

Shell membrane:

Membranes that surround the albumen/egg white

Vitelline membrane

Holds yolk contents

Yolk

Yellow portion of an egg, which is the protein source

Embryo:

A developing plant or animal

Embryology:

Is the study of an embryo.

Humidity:

Humidity is the concentration of water vapor present in the air.

Incubator:

An enclosed apparatus providing a controlled environment (humidity, warm temperature, and movement) for the care and protection of fertilized eggs until they hatch.