

Fine Arts Competition Handbook

For more information, contact
Lorie Stinson, CFE
Exhibits and Special Events Manager
Phone: (561) 790-5245
Email: lorie@southfloridafair.com

IMPORTANT DATES

Online or Paper Entry Form deadline

Friday, Dec. 27, 2024

Deliver items to Building 3 at the South Florida Fair (see Page 5)

Items exhibited

Jan. 17 - Feb. 2, 2025

Entry pick up

Monday, Feb. 3, 2025

9 a.m. – 5 p.m.

Competition Overview

Entry Fee: FREE

General Rules – Page 4

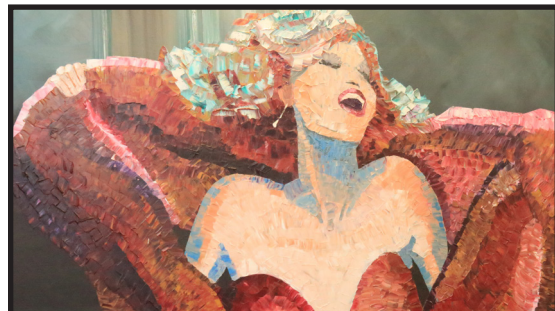
How to enter online – Page 5

Paper entry form - Page 6

Exhibitors are encouraged to read this handbook in its entirety.

Eligibility

- The Fine Arts Division is open to all Florida residents ages 18 and up and youth in the first grade and up.
- Only non-professional artists in the State of Florida can participate. The non-professional artist is one who does not receive a major portion of his or her income from the sale of his or her art or teaches art classes



Entry Rules

NUMBER OF ENTRIES

Due to display limitations, only three (3) items per person will be accepted for judging. All three (3) can be entered in the same class or different classes.

SIZE AND PREPARATION GUIDELINES

- All artwork must be labeled with the exhibitors name on the back or bottom of the piece.
- Two-dimensional artwork cannot exceed 36 inches in any direction, including the frame.
- All two-dimensional artwork must be received installation-ready. Most artwork must be framed unless painted on a gallery wrapped canvas. Artwork must be suitably wired using strong screw eyes and wire. See "Preparing Entry for Exhibition" on Page 7.
- Artwork with clip mounts, missing wires, string, scotch tape or saw tooth hangers WILL NOT BE ACCEPTED.
- Three-dimensional artwork cannot exceed 24 inches in any direction, unless approved by Competitive Exhibit Coordinator.
- All three-dimensional artwork must be received installation-ready. Provide a base if necessary for structural support.
- All artwork must be dry when submitted for exhibition.

ORIGINALITY GUIDELINES

- All work must be original. The artist's source material must be original and not derived from a published image that were not created by the artist. "Original" means that painting is the artist's own composition in concept and design, not copied in whole or in part from another artist's or photographer's work, or painted in a class or work shop with the help or direction of an instructor. Collage is acceptable if it is created from material created by the artists.

NOTE: We will be checking any artwork we suspect as not being an original creation.

- Work must be of the artist exhibiting, no teacher assisted work.

GENERAL ENTRY RULES

- Entries previously exhibited at the South Florida Fair may not be submitted for competition.
- Exhibited work must be completed within the last two (2) years.
- Entries must have been prepared/made/processed by the exhibitor in whose name they are entered.
- In keeping with the South Florida Fair's family orientation, items of an offensive, controversial or objectionable nature or subject matter will not be accepted.

Judging and Awards

The Fair ensures the judges are knowledgeable in the fine arts and will be impartial. Judges reserve the right to reassign entries to a more appropriate division or class. ***The decision of the judge(s) is final.***

If, at the judge's discretion, an entry does not merit a placing, the judge shall give no award under any circumstance. This rule applies whether there is one or more exhibits in the class.

Judging Criteria

Originality and Creativity
Composition/Design
Presentation
Technical Skills

Awards Information

First Place – South Florida Fair Ribbon

Second Place – South Florida Fair Ribbon

Third Place – South Florida Fair Ribbon

Best of Show – South Florida Fair Ribbon and Premium Payment

Best of Show awards will be chosen from the first-place winners in each division.

Divisions and Classes

Division #1: Acrylic and Oil Media

Class Description

1. Painting – *People*
2. Painting – *Places (land, sea, sky and city scapes)*
3. Painting – *Still Life and Things*
4. Painting – *Animals*

Division #2: Two-Dimensional Art

Class Description

1. Water Media Painting
2. Drawing - *Black & White*
3. Drawing - *Colored Pencil*
4. Pen and Ink (includes calligraphy, zentangle, etc.)
5. Scratch Board
6. Pastel
7. 2D Mixed Media
8. Printmaking
9. Digital Art

Division #3: Three-Dimensional Art

Class Description

1. Recycled Art
2. Decorative Arts
3. Sculpture
4. 3D Mixed Media

General Rules

Disclaimer

All competitive exhibits are entered at the exhibitor's risk. The South Florida Fair does not insure and is not responsible for any loss, damage, or theft of entries, even if the loss, damage, or theft occurs as the result of the handling of the exhibit by staff, volunteers, contractors and/or visitors. If the exhibitor desires insurance coverage, this coverage should be secured from a personal insurance agent prior to entry and the policy written to cover the period of exhibition and transportation. Reasonable care will be taken to prevent loss or damage to exhibits. Unauthorized persons are not permitted in the building after closing hours.

Division/Class Cancellation

The South Florida Fair reserves the right to return entries and cancel any division or class in which, in its judgment, the entries are insufficient to secure adequate competition.

Entry Errors

South Florida Fair is not responsible for finding errors in entries. Exhibitors are responsible for any and all errors which were submitted online or on entry and summary forms. No exhibitor shall be entitled to an award which has been disallowed as the result of his own error. The South Florida Fair shall withhold the payment of awards for exhibits that are ineligible and may recover awards that have been paid for ineligible entries that are disclosed during post audits of Fair records. However, exhibitors with cause are entitled to question the validity of any disallowance. Such exhibitors should inform the South Florida Fair immediately, in writing, giving their name, address, complete description of the entry and the reason for requesting reconsideration. Requests will not be considered later than 90 days after receiving notice of disallowance.

Premium Payments

Premium awards will be paid to the Best of Show. Best of Show awards will be chosen from the first-place winners in each Division. Amounts vary depending on Division.

Substitution

Substitutions may be made in still exhibits only in the same division of the original entry class of the original exhibitor, and may be made only if completed by the entry delivery date. Substitutions must be made at time of delivery check-in. The South Florida Fair or the judge may disqualify or transfer to the correct class any entry which is not a true representative of the division or class in which it is entered.

Previously Entered Entry

Any entry that has been exhibited at a previous South Florida Fair is not eligible for entry in this year's South Florida Fair, excluding Horticulture and Creative Aquarium entries.

Verification

Exhibitors wishing to verify that the South Florida Fair has received submitted entry forms must include a self-addressed/stamped envelope when submitting entry forms. Online submissions will receive a confirmation entries are submitted.

Responsibility

The South Florida Fair shall not be responsible for exhibits remaining on the fairgrounds after designated release times. All still exhibits or display elements remaining on the Fairgrounds after the designated release time will be treated as abandoned property and will be disposed of on or before Feb. 28 of the current year.

Removal of Entries

Exhibitors may not remove their entry from the South Florida Fair once it has been accepted. Entries must be on exhibit at the official opening of the Fair or at any other time specified in the Competition Handbook and shall not be removed from the Fairgrounds prior to the release date printed in the handbook, except (at the discretion of the South Florida Fair) in cases of evidence of sickness, accident and/or death, or other circumstances that are in the best interests of the Fair.

Design

The South Florida Fair assumes total design control over the presentation of the exhibits. Entries designed for hanging and not so equipped will be hung in a manner deemed appropriate by the Fair. No exhibit changes will be made once the entries have been displayed. Once an entry has been received by the South Florida Fair, no further handling of entry by exhibitor shall be permitted.

Relocation and final placement shall be accomplished by South Florida Fair personnel. Entries requiring assembly/disassembly must include detailed instructions and sketches for assembly/disassembly. Instructions should indicate lifting points, unsecured parts and any other information required for such handling. Where necessary, bank pins will be utilized to attach exhibits for display.

How to Enter Online

Exhibitors are encouraged to enter online at www.southfloridafair.com/TheCreationStation.

- Review this Competition Handbook to see which division and class your entry is eligible to compete in. Follow the easy steps listed below to enter.
- To enter online, go to www.southfloridafair.com/TheCreationStation and complete the form. Click the submit button and make sure you are brought to the thank you for registering page.
- Everyone must register as a new exhibitor each year.
- When registering, please verify all information is correct. Please pay special attention to capitalization, full names of cities/counties and use proper spelling (no abbreviations).

Mailing Paper Entry Forms

Entry Forms must be postmarked by Friday, Dec. 27, 2024.

Failure to complete any portion of entry form may result in disqualification.

Mail Entry Form to:

The Creation Station, Crafts & Specialty Arts – Fine Arts (Adult & Youth)
South Florida Fair
P.O. Box 210367
West Palm Beach, FL 33421-0367

Delivery Entries

All entries must be delivered to the South Florida Fair on either:

Thursday, Jan. 2 9 a.m. – 5 p.m.	Friday, Jan. 3 9 a.m. – 5 p.m.	Saturday, Jan. 4 9 a.m. – 5 p.m.	Sunday, Jan. 5 9 a.m. – 5 p.m.	Monday, Jan. 6 9 a.m. – 5 p.m.
-------------------------------------	-----------------------------------	-------------------------------------	-----------------------------------	-----------------------------------

Deliver entries to:

South Florida Fair
Building 3
Attn: Lorie Stinson

Enter Gate 10 off Fairgrounds Road.

Entries arriving at the Fairgrounds after delivery deadline may be disqualified.

Retrieving Entries

- See the calendar for pick up dates, times and locations (Page 1).
- Entries not picked up on designated dates can be arranged for special pick up appointment by emailing lorie@southfloridafair.com.
- All entries not claimed by Feb. 28 of the same year will be recycled, disposed or donated.

Fine Arts Competition Entry Form

OFFICE USE ONLY

Exhibitor # _____

Entry Forms must be postmarked by Friday, Dec. 27, 2024.
Failure to complete any portion of entry form may result in disqualification.

Please print legibly

Exhibitor's Name (First, Last)		If Youth wins prize money, who should the check be made payable to?	
Mailing Address		County	
City	State	Zip Code	
Phone		Email	

Competition Division: Adult (ages 18+) Youth

Exhibitors may enter up to three entries for judging.

	DIVISION#	CLASS#	TITLE OF ARTWORK
1			
2			
3			

I hereby certify that I have read the South Florida Fair General Rules (Page 4) for the The Creation Station, Crafts & Specialty Arts Program (Page 4) and the above item(s) is/are entered for exhibition strictly in accordance with these rules, by which I agree to be governed. I also agree that the South Florida Fair may use my name, likeness, or photograph (including, but not limited to photographs of my entry), in any manner relating to my participation in the The Creation Station, Crafts & Specialty Arts Program, free of charge and without further notice or consultation.

 Signature of exhibitor Date

 Signature of parent/guardian (Youth ONLY) Print name of parent/guardian Date

Mail Entry Form to:
 The Creation Station, Crafts & Specialty Arts
 South Florida Fair
 P.O. Box 210367
 West Palm Beach, FL 33421-0367

Preparing Entry for Exhibition

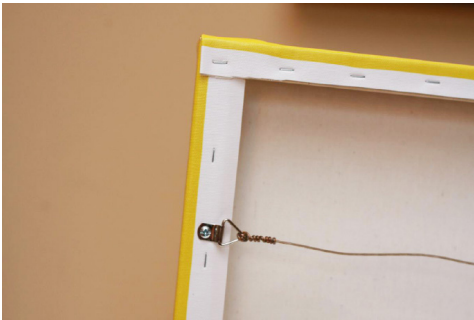
Fine Arts (2D)

(Items that can be hung on wall)

Artwork should be framed, excluding gallery wrapped canvases

- Framed items must be ready to hang using secure screw eyes and wire.
- Gallery wrapped canvases should be ready to hang using secure screw eyes and wire. Gallery wrap is a method of stretching an artist's canvas so that the canvas wraps around the sides of the stretcher bar or strainer bars and is secured to the back of the wooden frame, where the hardware (staples, tacks, etc.) is hidden.
- All artwork must be labeled with the exhibitor's name on the back of the piece.

Examples of wire hangers on gallery wrapped canvases



Examples of wire hangers on frames



Fine Arts (3D)

(Items that sit on pedestal or shelf)

- All three-dimensional artwork must be received installation-ready. Provide a base if necessary for structural support. The Fair will provide pedestals and glass cases to protect the work.
- All artwork must be labeled with the exhibitor's name on the bottom of the piece.

Index

2D and 3D Mixed Media: *uses more than one medium.*

Acrylic and Oil Media Paintings: *defined as 2D paintings painted on stretched or non-stretched canvas, wood, clay board, or other hard surface.*

Digital art: *refers to original artwork that is created on a computer. This does not include animated, 3D hologram or video.*

Drawing: *includes graphite pencil, charcoal, color pencil, etc., on paper.*

Pastel: *includes soft and oil pastel.*

Pen and Ink: *black and white, color, or zentangle. This includes alcohol-based inks and markers.*

Recycled art: *must use at least 80 percent recycled materials.*

Sculpture: *the art of making three-dimensional representative or abstract forms. Sculptures fall into four basic categories: molded, cast, carved or assembled.*

Water Media Painting: *limited to water soluble water media (no water soluble oil products or pastels). Paintings may be created on all surfaces specifically for water media (i.e. paper, clay board or synthetic surfaces like Yupo and Tyvek®, illustration board, paper mounted on board, or flat upstretched water color canvas). The Paintings can be framed, matted, under glass or Plexiglas or varnished.*