

/2017-2018/

ANNUAL REPORT



PPHM

PANHANDLE-PLAINS HISTORICAL MUSEUM



PANHANDLE - PLAINS
HISTORICAL SOCIETY
19-MUSEUM-32



THE HISTORY OF THE
PANHANDLE PLAINS
FROM 1840 TO 1890
BY
J. W. H. HARRIS
PUBLISHED BY THE
PANHANDLE PLAINS HISTORICAL SOCIETY
MUSEUM - 32

THE HISTORY OF THE
PANHANDLE PLAINS
FROM 1840 TO 1890
BY
J. W. H. HARRIS
PUBLISHED BY THE
PANHANDLE PLAINS HISTORICAL SOCIETY
MUSEUM - 32

/2017-2018/
DIRECTOR'S REPORT
Panhandle-Plains Historical Museum



CAROL LOVELADY
Director

The year 2017-2018 can be summarized in one word – **up**.

Attendance went up. Membership revenue went up. Donations went up. Partnerships with West Texas A&M University went up. Underwriting by businesses and individuals went up. The number of volunteers went up.

Two new endowments were added: the Charles K. and Phyllis P. Hendrick Ethnology Fund and the Bugbee-Grauer Fund for Art and Western Heritage.

PPHM now has exhibit space in the Historic Federal Building in downtown Amarillo and Amarillo National Bank is providing internships for WTAMU students.

WT asked us to host the inaugural brunch for President Dr. Walter Wendler, a luncheon for past regents of West Texas State University and a luncheon and museum tour for Tim Leach, Texas A & M University regent. Faculty used our Research Center, brought classes to see our exhibits and spoke at our programs. The Center for the Study of the American West used our facilities for talks and conferences. We partnered with Cornette Library and Panhandle PBS in presentations to students and the public.

Ten businesses, foundations and individuals funded exhibits and events for the first time. *Pop Culture*, *Cattle Cowboys and Culture* (which will open in February) and *Native Lifeways* exhibits, free museum admission during WTAMU Homecoming and brew for Crafts and Drafts were all sponsored by new donors.

Volunteers helped in the archaeology department and Research Center, led museum tours and worked with school children. More than 200 volunteers helped with Christmas Open House and Night at PPHM.

As we look to 2018-2019, we want to continue this upward trend. We appreciate your membership, your attendance, your time and your financial support. Together we are better. You helped us, we served you and the result was uplifting for us all.

I would be remiss in closing this message without mentioning the departure of Michael Grauer. Michael came to PPHM in 1987 as Curator of Art and retired August 31, 2018. Over the course of 31 years his title grew to be Associate Director for Curatorial Affairs/Curator of Art and Western Heritage, Adjunct Lecturer in Western American Studies. Even this long title cannot accurately capture the depth and breadth of Michael's service. Michael carried the PPHM brand from Canyon across the state, the nation and most recently as far as Brussels, Belgium. His knowledge of all things PPHM is unmatched and his service is unequalled.

Appreciatively,

A handwritten signature in black ink that reads "Carol Lovelady". The signature is fluid and cursive.

Carol Lovelady
Director

NUMBERS



55,981
visitors to the museum



5,894
WTAMU students served by PPHM
through curriculum support and
student services



12
WTAMU student
workers



1,110
brought their flashlights
for Night at the Museum



44
tour groups from across
the United States



1,600
hours of service donated
by 64 volunteers



24

student interns



15,241

followers on Facebook, Twitter and Instagram



4,277

children visited PPHM for special events like Dia De Los Muertos



10,744

guests attended programs and events



\$40

Cost of a Summer Pass giving visitors a chance to receive member benefits for the summer



350

watched Jurassic Park on the PPHM lawn



7,070

students and teachers visited PPHM on school field trips



8

number of countries represented by PPHM visitors



5,336

guests at Christmas Open House



EXHIBITIONS at PPHM

LONESOME DOVE

Taken by Bill Wittliff, award winning screenwriter, author and photographer, this photographic exhibition captured the essence of the four-part drama. LONESOME DOVE is a traveling exhibition created by the Wittliff Collections at Texas State University in San Marcos, in partnership with Humanities Texas, the state affiliate of the National Endowment for the Humanities. September 8, 2017- December 3, 2017

Pop Culture: RCA to Apple

This exhibition features a large collection of phones, games, computers and cameras from across the decades. Visitors learn where the devices we use every day come from, as well as the history of their favorite media memories. Open through December 2018



Pop Culture: A Cultural Revolution



This exhibition examines the major historical events of the last sixty years that have shaped society and influenced popular culture, bringing to light how these historical events influenced popular culture and entertainment. Open through December 2018

Pop Culture: A Day in the Life

This exhibit of adolescent bedrooms provides the opportunity to explore that stage in a person's life during which they are shaping their future identity. Half the bedrooms (1950s, 70s, and 90s) belong to boys, and the movie posters, games, toys and clothes in the closet reflect a young man's developing interests. The 1960s, 80s, and 2000s are girls' rooms and display their varying interests. Open through December 2018

Pop Culture: PPHM Theater

With trailers, clips, quotes and unforgettable moments from Hollywood's most influential films, visitors are able to share classic favorites with friends and family in our bean bag chairs. Open through December 2018

Robert Lougheed: Horses of the World

The widow of an anonymous donor from Santa Fe has given thirteen works of art by Western artist Robert Lougheed to the Panhandle-Plains Historical Museum. Opened summer 2018, Closing TBA

Native Lifeways of the Plains

Drawn principally from the museum's ethnology collection, this exhibit showcases the material culture of the indigenous people of the Great Plains. Among the artifacts featured are Quanah Parker's headdress, the Kiowa calendar and a recently conserved breastplate and lance. Open through May 2019

Nancy Josseland Art for Everyone Red Landscape 3D Relief

Art for Everyone is designed to make art accessible to everyone, including the visually impaired. PPHM is one of the first museums in the United States to pioneer this level of inclusivity in its exhibits. The first piece of art is a 3-D, interactive sculptural relief of *Red Landscape*, a painting by former Canyon resident, Georgia O'Keeffe. This is a permanent installation.

EXHIBITIONS at HISTORIC FEDERAL BUILDING IN AMARILLO

Cattle, Cowboys and Culture Fall 2017

LONESOME DOVE Winter 2017

The Great War Currently on display

EXHIBITION at THE KANSAS CITY PUBLIC LIBRARY

Cattle, Cowboys and Culture

The connection between Kansas City and the Texas Panhandle began when Kansas City merchants supplied buffalo hunters at Adobe Walls in 1874. Texas Panhandle cattlemen began shipping cattle directly to Kansas City via railroads by 1888. Material objects and artifacts, art and decorative art objects, photographs, and architectural renderings from the PPHM collections cover all aspects of this story. September 23, 2017 -March 18, 2018

EXHIBITIONS at WEST TEXAS A&M UNIVERSITY

Amarillo Center

85 Years of Service: The Relevance of History

From the opening of the PPHM building in 1933 to the present, faculty and students have benefitted from having the museum on campus. This exhibit demonstrates how a historical museum is relevant to current educational focuses of science, technology, engineering, arts and math (STEAM).

WTAMU Agriculture Complex

Using photographs, domestic tools and macro artifacts from the museum's collection, this exhibit presents agricultural history of the Panhandle-Plains region.

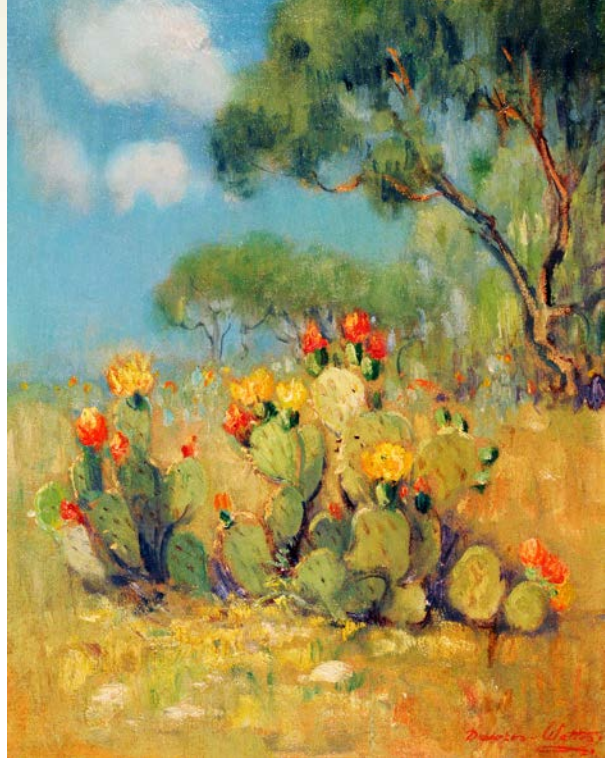
LOANS

Bullock Texas State History Museum, Austin, Texas

- a Comanche bow and headdress for the exhibition, *Comanche Motion*. Various rodeo artifacts, including a women's Miss Rodeo America contest suit, a men's Wrangler competition shirt, and bareback rigging and glove, were lent for *Rodeo! The Exhibition*. Closes February 28, 2019.

Kansas City Public Library, Kansas City, Missouri

PPHM's traveling exhibition, *Cattle, Cowboys, and Culture: Kansas City and Amarillo, Building an Urban West* (September 23, 2017 – March 18, 2018). The exhibition featured objects relating to the historic economic, cultural, and architectural connections between Kansas City and Amarillo.



U.S. State Department's Art in Embassies program

Dawson-Watson, *Prickly Pear*, circa 1927

Panhandle-Plains Historical Museum, Purchase Funded by Cynthia and Bill Gayden

American Quarter Horse Museum, Amarillo, Texas

- for the exhibition, *Hard Work & Horse Power*.

The objects were a harness, wagon, phaeton and half-row cultivator.

Bullock Texas State History Museum, Austin, Texas

- Dot Babb necklace, woman's saddle, man's saddle and moccasin boots, for the exhibition *American Indians at a Cultural Crossroads*.

U.S. State Department's Art in Embassies program

- four paintings at the residence of the U.S. Ambassador to NATO in Brussels and eight (8) paintings at the U.S. Embassy in Lesotho.

Ellen Noel Art Museum of the Permian Basin, Odessa, Texas

- for *Celebrate Texas: Art & Fashion*. Early 20th century evening gown.

The Bryan Museum, Galveston, Texas - for *The Life and Times of Charles Goodnight*. Two Colonel Goodnight saddles, two branding irons, two rifles and a set of spurs. Exhibit closes October 22, 2018.

Request from the family of Helen Norris - Colonel Helen Norris, USAF retired and a donor to PPHS, passed away in February 2018. The Society lent her ribbon bar and wings to her family for the service. Colonel Norris' uniform is currently on display in, "A Cultural Revolution."



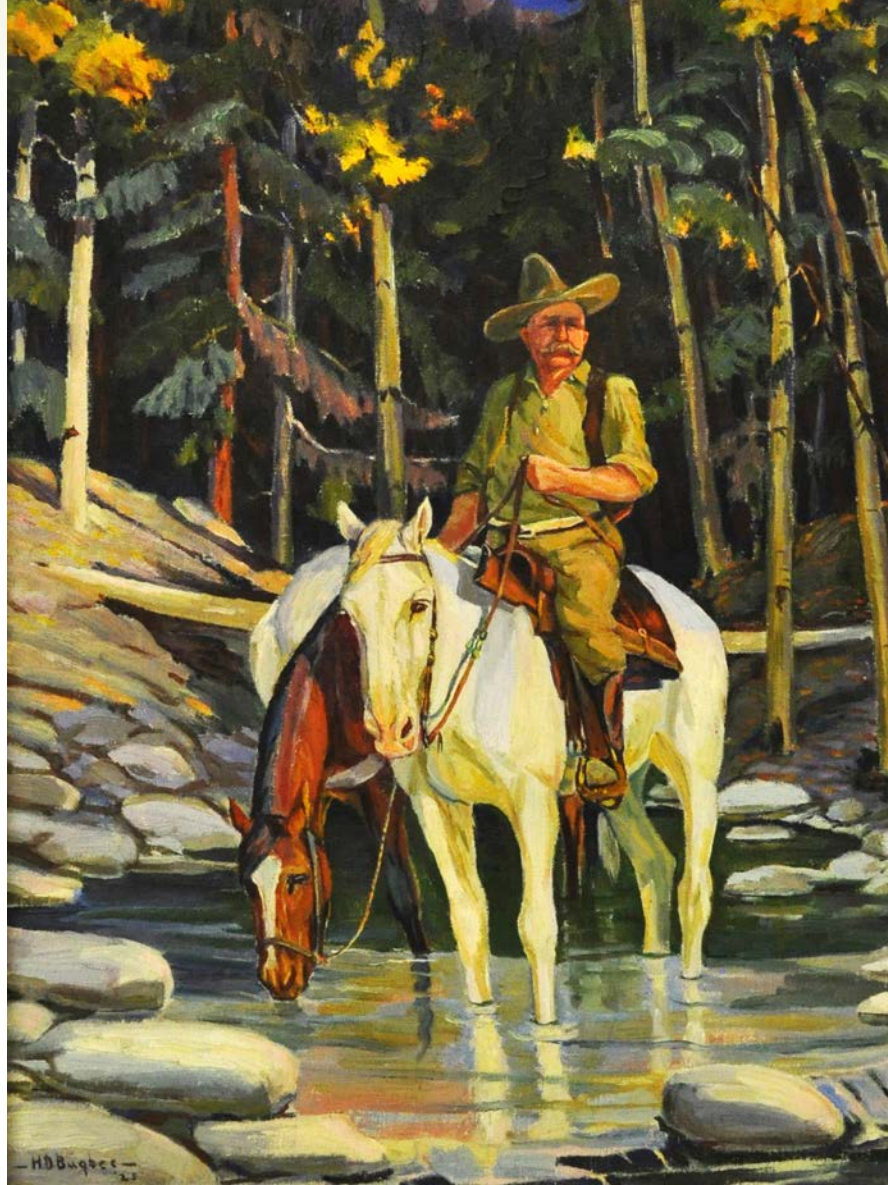
WT school blanket

Donated by Jeff Sone belonging to his grandfather Law R. Sone (1902-1984).



Fur Coat

Susan Malone donated two fur coats.



On The Tecolote by Harold Dow Bugbee 1925, Oil on canvas 20 x 14 in, Bugbee Estate

ART & HISTORY ACQUISITIONS

Art Department

Gayden Family Foundation purchased a pastel on paper, untitled [possibly Canyon Land] by Charles Peter Bock (1872-1952), ca. 1908, 4 1/4 x 9 1/4 in. Bock was a friend and student of Frank Reaugh and accompanied Reaugh on a sketching trip to West Texas in 1908.

Donna Otto donated seventeen (17) folios of sketches, photographs, and drawings by Claude, Texas native Arlen Campbell, caricature artist.

Cornelia W. Ritchie donated lithograph on paper, *The Bronco Buster* W. Herbert Dunton, 1931, 18 11/16 x 16 in., from the JA Ranch/Montie Ritchie Collection.

Friends of Southwestern Art (FOSA) purchased: etching: John French Sloan "Better Mouse Traps" 1937, 4 x 5.75 in [plate].

Bugbee-Reaugh Acquisition Fund purchased: oil on masonite, *Them Was the Days* by Harold West (1902-1962), 16 x 24 in. West was a New Mexico artist from the 1930s to 1950s

Dr. Charles K. Hendrick continued to donate sculpture to the Society, including the following: bronze, Jack Drake "Quail"; bronze, Veryl Goodnight "Hummingbird"; bronze, Clark Bronson "Trout"; 3 - bronze, Dan Ostermilles "Benjamin", "Prong Horn" and "Buffalo" giftSculpture: alabaster "One Who Sings by a Night Fire" by Oreland Joe; Lalique glass: Male lion, female lion, lion cubs, bear, three (3) Albertville Olympics medallions with plastic stands; glass: Baccarat buffalo; sculpture: sterling sliver, "Wolf" Joseph Lone Wolf.

The granddaughter of Lucien Abrams (1870-1941), Regina "Nena" Evans, donated the following paintings by him: *New Port*, 1907, oil on cardboard, 16 x 13 in.; *Composition*, 1927 (?), oil on canvasboard, 20 x 16 in.; *Untitled [Louveciennes]*, n.d., oil on canvasboard, 16 x 20 in.; *Mission de la Purisima Concepcion de Acuña, San Antonio, Texas*, 1930, oil on canvasboard, 16 x 20 in.; *Blue Hole, Turtle Creek Park, Dallas, Texas*, 1923, oil on mahogany panel, 16 x 20 in.

Dawn Hall, widow of photographer Douglas Kent Hall donated five gelatin silver prints: Brian Thomas, 22 x 20 in., *Jake Diggs*, 20 x 16 in., *Roping, Texas Panhandle*, 19 x 24 in., *Jake's Spur, JA Ranch*, 16 x 20 in., *Arlyn Norman*, 16 x 20 in.

Kathryn Marsh Glenn, granddaughter of Thomas Sherman and Molly Bugbee donated the following works of art: oil on canvasboard "Kathrine Patrick Bugbee" by H. D. Bugbee, 14 x 10 in.; oil on canvasboard "Lorraine Bugbee" by H. D. Bugbee, 14 x 10 in.; oil on canvasboard "Thomas Sherman Bugbee" by H. D. Bugbee, 10 x 7 in.; oil on canvasboard *Untitled [horses in pasture near canyon]* by H. D. Bugbee, 6 x 5 1/4 in.; 3 paintings by Harold D. Bugbee: oil, *Untitled [Bear]* 14 X 17 including frame; oil, William Patrick (father of W. H. Patrick) 14 X 18 including frame; oil, Althea Wood Patrick (mother of W. H. Patrick) 14 X 18 including frame; hand re-touched photograph: Ruby Bugbee Patrick 20 X 24 including frame; along with significant archival materials.

The Marylou Loewenstern Estate heirs donated a pastel, *Untitled [Adobes]* by Emilio Caballero, 25 1/4 x 29 3/4 in. framed.

The following H. D. Bugbee works were accessioned from the Bugbee Estate: Oil on canvas *On The Tecolote*, 1925, 20 x 14 in.; Oil on canvas, *Frank Collinson-Cowman*, 1935, 16 x 20 in.; hand-painted poster by Harold Bugbee, World War I theme, circa 1919; Ink and watercolor on paper "Untitled [Buck Dunton and Packhorse]" circa 1930, 12 x 9 in.; watercolor and charcoal on paper, *Goodnight Ranch*, 1934, 14 x 10 in.; ink on paper *Royal Bison of 12,000 years ago*, circa 1930, 9 x 12 in.; and one lithograph "Magpies" by Joseph Imhof, ca. 1930, 18 x 11 in.

Charles O'Haver of Albuquerque donated: Bronze, Juan Dell "Prairie Girl Hoeing."

Jerry Bywaters Cochran, daughter of Texas Regionalist Jerry Bywaters, donated: Texas Centennial glassware set: 1 star paperweight, 1 plate, 1 ash tray, 1 cup, 1 champagne glass, 1 creamer, 1 sugar cup with lid, designed by her father for the Texas Centennial Exposition, 1936; eight lithographs by Jerry Bywaters: *Mexican Mother, Old Clown, Divide, Colo, Man and Guitar, Mexican Girl, West Texas R.R. Station, Water Carrier, and Bone Yard*; and five woodcuts by Jerry Bywaters: *Untitled [blue horse], Paint Colt, Untitled [cowboy], Texas Ranger, Untitled [Native American portrait]*.

Oil on canvas, "Untitled [wolf]" by Robert Alcius Butler, 14 x 10 in. was a gift of Linda B. Wyatt

History Department

The Maureen Poole Roberts Estate left the following firearms to the Society: Colt Army Special, 32-20 WCF, 6-shot with leather belt holster, Brauer Bros Mfg. Co, St. Louis; Colt automatic .22 cal. long-rifle challenger, 57916-c (clip missing) with leather holster; bolt action Remington .30-06 model 721, SN 244143; Harrington and Richardson Arms Co. 12GA. Choke single shot, SN 265860; bolt action single shot Remington rifle, .22 short, long, or long rifle, SN62684; lever action Winchester, .22 cal model 94-25-35 WCF with leather scabbard;

The Society purchased a rare example of U.S. Model 1874 saddle bags, used by either the 6th or 9th U.S. Cavalry.

Ricky Warren of Dallas donated Jack Coulter's Jordan & Sons stock saddle, Alamogordo, New Mexico, ca 1940.

Shelah Stephens Lile of Lubbock donated the Apache Saddles, Western stock saddle (1943), used by her father on his Wheeler County farm; and a walnut saddle stand (walnut from Franklin County, Arkansas stock farm), and a saddle blanket purchased in Lubbock, Texas.

Jeff Sone donated a WT school blanket belonging to grandfather Law R. Sone (1902-1984).

A fringed leather jacket (Pioneer Wear, 1952), was a gift of Billie Porter.

A "Perot for President" "gimme" cap was donated by Becky Livingston.

Karen Haymer donated thirty-six examples of ladies and mens clothing;

Susan Malone donated two fur coats.

Ann Carson donated sixteen examples of ladies clothing; Ann Carson donated ten dress patterns; and the Research Center transferred thirty-four dressmaking and embroidery patterns; for curatorial reference.

Samantha Biffle donated a t-shirt: "Texans for Obama."

A mink hip length fur coat with leather belt was donated by Dr. Charles K. Hendrick.

Kathryn Marsh Glenn donated quilts and examples lace and cutwork from the T. S. Bugbee Family, numbering nine pieces.

Capps and Peggy Dyess donated the garrison cap and 48-star U.S. burial flag from their uncle, George F. A. Robertson Jr., killed in World War I and buried at Llano Cemetery.

A Maurice Cheeks Philadelphia 76ers jersey was donated by Gregg Bynum.

Joe Foran donated a 1960 Amarillo Gold Sox uniform.

ARCHAEOLOGY HIGHLIGHTS

Selected Acquisitions

Archaeology

Donna Otto of Mercedes, TX donated archaeological records related to projects in the region. They include records by Meeks Etchieson of the Lake Meredith Shoreline Survey and other miscellaneous papers, and field notes from the following projects: Palo Duro Creek, Chicken Creek, 1987 Wolf Creek TAS field school, Carson County Sims Property Survey, and the Helium Plant Survey.

Alvin Lynn of Amarillo donated historic and prehistoric artifacts collected at archaeological sites in Potter, Randall, Motley and Gaines counties. The material is associated with the following sites: 41GA7, 41PT494, 41PT277, 41MY16, 41MY5, A2506, A2513, A2514, A2515, and A2516.

The Anthropological Research Collections at Texas A&M University transferred soil samples obtained during Phase 2 of the Landergin Mesa Project (41OL2) in 1984. The rest of the materials from this important multi-year excavation are at PPHM.

Arizona State University transferred excavated materials from the Tierra Blanca (41DF3) and Blackburn (41RD20) sites from a project conducted by Dr. Katherine Spielmann in the early 1980s.

Mary Ruthe Carter of Amarillo donated prehistoric and historic artifacts collected at Madsen Lake (41RD105) in Randall County in the 1960s.

Beverly and the late Jim Couzzourt donated archaeological records and artifacts from work at several sites in the Texas Panhandle. Materials include artifacts and field notes from the Boys Ranch excavations in 1984 in Oldham County and several hundred color slides from various projects.

Ethnology

Dr. Charles Hendrick of Amarillo donated 19 pieces of fine jewelry crafted by contemporary Native artists. They include silver necklaces, pendants, bracelets, earrings, and pins with various inlaid stones. Dr. Hendrick also gave a ram Kachina by Dennis Tewa, a Two Grey Hills rug by Lucy Dennison, and a Burnt Water rug by Gloria Yazzie.

Major Collections Management Projects

- Completed the six-month Self-Evaluation part of the Texas Historical Commission's Curatorial Facility Certification Program. The Self-Evaluation consisted of a thorough assessment of PPHS's governance, collections, resources, policies, procedures, and plans as they relate to state associated held-in-trust collections.

- Populating first departmental-wide database. The objective of this long-term project is to make PPHS's scientific collections more accessible for exhibits, loans, and research. In the past year, approximately 90% of the paleontology collections have been physically inventoried, and 60-70% (or 31,762 specimens) of these records have been entered into the database. This includes most of the donated collections. Inclusion of the WPA collections are in-process. The department is on schedule to complete data entry for all paleontology specimens by the end of the year.
- Physical inventory of the comparative faunal osteology collection nearing completion.
- Cougar skeletal mount assembled in the late 1930s was completely rebuilt using archival methods and materials. In order to mount correctly, extensive research was done on cougar anatomy, posture, and behavior.

Presentations and Tours

Archaeology Day participants
WTAMU students

WTAMU Fine Arts and Humanities faculty

Texas A&M Regent

Representative Four Price's budget committee members

PPHM Advisory Board

Santa Fe Archaeological Society

Texas Historical Commission.

Field projects

Roberts and Motley counties

Conferences and events

Texas Archeological Society Annual Meeting

Southern Plains Conference

Society of American Archaeology

Southwest Federation of Archaeological Societies

Gathering of Nations

Academic research on collections

Arias, Veronica M.

2018 New Investigations of an Archaic Bison Kill Site in the Texas Panhandle. In *Transactions of the 53rd Regional Archaeological Symposium for Southeastern New Mexico and Western Texas*, pp. 39-45.

Arias, Veronica M., Anthony S. Lyle, and Rolla H. Shaller
In prep History of Archaeological Investigations at Palo Duro Canyon State Park. In *The Story of Palo Duro Canyon*, edited by Alex Hunt.

Lintz Christopher R. and Rolla H. Shaller
In press Tema LeClerc Eyerly and the 1907 Wolf Creek Archeological Expedition to the Buried City in Ochiltree County, Texas. *Bulletin of the Texas*



Volunteer, Dr. Douglass Hyde, and Archaeology Assistant, Miranda Bible, redid a cougar mount that was originally done in 1938.

Archeological Society.

In press An Early Day Description of the Old Town Built of Stone on the Banks of Wolf Creek. Papers in Honor of Jay Blaine, Tarrant County Archeological Society, Dallas.

Shaller, Rolla H., Christopher R. Lintz, and Gerald E. Schultz
 In prep C. Stuart Johnston and the New Deal Paleontological Programs in the Texas Panhandle. *Panhandle-Plains Historical Review*.

Professional Presentations

Arias, Veronica M.
 2018 *An Isolated Middle Archaic Bison Kill Site in the Northern Texas Panhandle*. Paper presented at the 83rd Annual Meeting of the Society for American Archaeology in Washington, D.C., April 12.

Conservation

- Comanche headdress
- Southern Plains breastplate
- Wolf Kachina doll
- Black-on-black pot by Margaret Tafoya

Other Activities

- Curatorial Assistant completing Texas Master Naturalist training course.
- Curator of Anthropology and Natural History currently serves on the following boards and committees:
- Panhandle Archeological Society, President
- Society of American Archaeology's Public Education Committee, Texas State Coordinator
- Panhandle-Plains Archeological Research Foundation, Board of Directors
- Center for the Study of the American West's Faculty Council Curriculum Committee, member



19 Pieces of Jewelry

Dr. Charles Hendrick of Amarillo donated fine jewelry crafted by contemporary Native artists.



Prehistoric and Historic artifacts

Mary Ruthe Carter of Amarillo donated artifacts collected at Madsen Lake in Randall County in the 1960s



William Henry Dethlef Koerner,
He's a Professional Gunfighter. His Job is Shooting People circa 1909
 Panhandle-Plains Historical Museum
 Purchase funded by the Ralph H. and Ruth J. McCullough Foundation

RESEARCH CENTER

Highlights

Online access to the research center catalog was significantly improved by the addition of a search interface accessible on the museum's website.

The research center was selected to take part in a grant-funded project which will allow descriptions of its archival collections to be accessible through Texas Archival Resources Online, a consortium of archives from around the state.

Cataloguing unpublished manuscripts and archival collections continued, with over 200 new or updated records added to the catalog this year.

A generous financial contribution from the Robert Moody Foundation and from John A. Decker, Jr. will be used to process and house the Trigg family papers, documenting one hundred years of ranching in the Texas Panhandle and New Mexico.



Anderson family collection

Selected acquisitions - Documents and photographs of Hattie Anderson and other family members.

Selected Acquisitions

- Dee C. Trent papers: letters, military records and photographs related to military service in World War I.
- Caballero family papers: photographs, biographical and genealogical information on the family of Emilio Caballero, artist and educator
- Bugbee-Patrick family papers: Correspondence, photographs and printed material related to T.S. Bugbee, W.H. Patrick, and other members of their families.
- Roberson family papers: correspondence and photographs on the World War I military service of George Roberson, Jr.
- Gordon-Cumming family papers: printed material and photographs related to the Canyon, Texas family.
- Anderson family collection: documents and photographs of Hattie Anderson and other family members.
- Bivins family papers: correspondence, photographs, printed material and a scrapbook on family ranching and personal activities.
- Canyon Fine Arts Club records: Minutes, yearbooks, financial records and scrapbooks.

Presentations and tours

- Amarillo Genealogical Society
- Randall County Historical Commission
- WTAMU Fine Arts and Humanities
- Southern Plains Conference

/ 2017 - 2018 /
FINANCIALS

Panhandle-Plains Historical Museum

Total Assets

The total assets held by the Society at the end of August 31, 2018 were \$ 11,531,815.

This is an unaudited figure and includes current operating and endowment accounts.

Brown, Graham & Company, an accounting firm located in Amarillo, Texas has audited the financial records of the Panhandle-Plains Historical Society for the past several years. In the Independent Auditor's opinion, the financial statements referred to present fairly the financial position of the Panhandle- Plains Historical Society. The past three years audited total assets as of August 31st are as follows:

FY 2015: \$12,313,116 FY 2016: \$11,183,332 FY 2017: \$11,381,425

The reason for the decline in total asset value is the completion of the petroleum wing exhibit in the approximate amount of \$1,600,000. That total was raised during FY 2014 and 2015.

Investments

Funds are held with the Texas A&M University System, Happy State Bank, and Amarillo National Bank. The asset allocations for investments held at the two banks are set by the finance committee of the PPHS. The asset allocation for all funds held at the Texas A&M University System is set by the Texas A&M University System Board of Regents.

Balances:		
Texas A&M University System Fund	\$ 8,870,614	80.7%
Amarillo National Bank	1,749,104	16.0%
Happy State Bank/Bugbee	361,883	3.3%
Other Investments	1,750	0.0%
TOTAL INVESTMENTS	\$10,983,351	100.0%

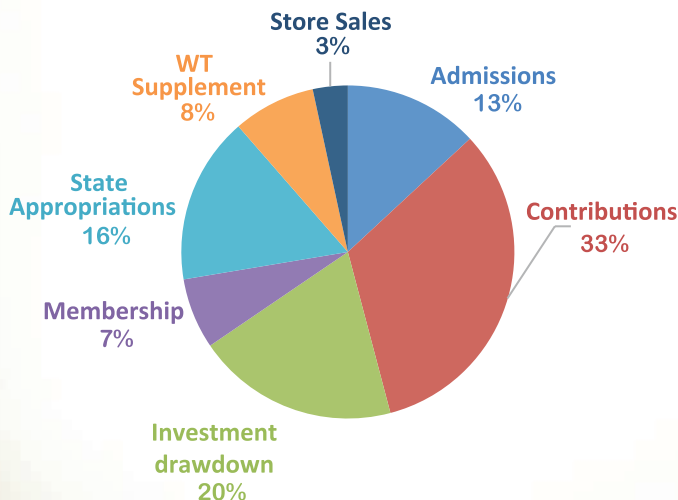
Operating Funds

Operating funds are held in accounts at Wells Fargo, Canyon (Unrestricted and Friends of Southwest Art) and Happy State Bank, Canyon (Research Center, Petroleum Wing, Temporarily Restricted and Capital Campaign).

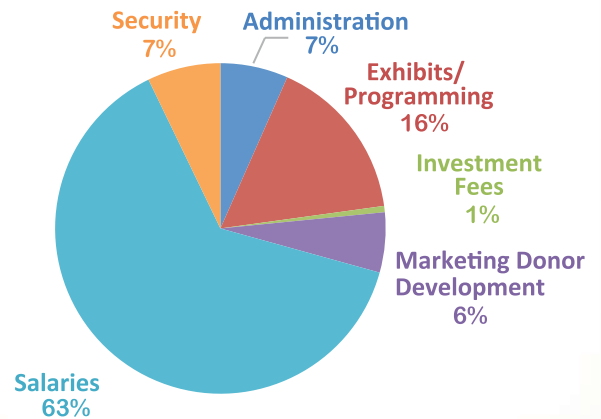
Operations

Another year of operations was successfully completed by PPHM on August 31, 2018. Due to the current economic times the Society is still relying more heavily on investment earnings and earned income sources. This year like the last one, the Society has received and is grateful for the continued benefit of supplementary economic support from WTAMU. The future is bright for PPHM and the board along with the staff and membership are committed to working together as we move the museum forward. It is due to the continued support of our members and donors that the PPHS is able to provide this community and State a first class museum.

REVENUE 2017-18



EXPENSES 2017-18





Certificate of Excellence
Trip Advisor Consecutively
since 2013



**Panhandle-Plains
Historical Museum**
Top 10 Western Museums



JOSE ARPA Y PEREA (1858 Spain-1952 Spain) *Verbena* circa 1925 Oil on canvas, 16 x 20 in.
Panhandle-Plains Historical Museum, James D. Hamlin Collection

AWARDS & RECOGNITIONS

Panhandle-Plains Historical Museum

Awards & Recognitions

Top 10 Western Museum – *True West Magazine* – Consecutively since 2013

Best Western Art Collection 2017, 2018 – *True West Magazine*

Best Pioneer History Collection 2018 – *True West Magazine*

Certificate of Excellence – Trip Advisor – Consecutively since 2013

Exhibition Award – *Jose' Arpa: A Spanish Painter in Texas* – Center for the Advancement and Study of Early Texas Art

Best Museum / Art Gallery – Best of Amarillo by *Amarillo Globe News* Consecutively since 2005

BOARD MEMBERS

Trustee & Advisory

Trustees — 2017-2018 Panhandle-Plains Historical Society

President – Mike Connor
Incoming President – Will Miller
Treasurer – Randy Rikel
Past President – Mary Bearden
Kathy Cornett
Kenneth Crossland
Tiffany Curtis
Joel Hogue
Alice Hyde
Jack Miller
Gary Moore
Ted Paup
David Woodburn

Advisory Board Members

Katie Cone
Jim J. Brewer
Erin Bunkley
Lainie Kritser
Becky McKinley
Katherine McLeod
Kevin Nelson
Ted Paup
Julie Phillips
B. Byron Price
Jeff Sone



Frank Klepper, *Collin County Courthouse* circa 1925
Panhandle-Plains Historical Museum, Canyon, Texas, Purchase funded by Cynthia and Bill Gayden

COMMITTEES

Development - Marketing - Ambassadors

Volunteers who serve on committees increase the reach of the museum and provide valuable insight.

Ambassadors

PPHM now has an ambassador program. This committee works to get new memberships and be ambassadors for our institution. Members are:

Mary Ellen Brandt
Kathy Connor
Kathy Cornett
Erich Drochner
Alice Hyde (chair)
Audrey Jones
Sandy Watts

Development

Lilia Escajeda
Kevin Friemel
Don Lee
Gary Moore
Ted Paup
Beverly Plank

Marketing

Mary Liz Brooks
Tiffany Curtis
Tony Freeman (chair)
Penny Massey
Eric Miller
Luke Oliver
Honnah Taylor



Permanent Collection
Working Saddles part of the
Mary E. Bivins Gallery

VOLUNTEERS

Panhandle-Plains Historical Museum

Thanks to our Volunteers

Volunteers provide invaluable support by serving in all PPHM's departments. We have many wonderful volunteers that provide school tours for the education department. Beth Remlinger, Peggy Pollard, and Debra Woody gave the museum over 133 hours over the school year conducting school tours and activities. The 13 volunteers in the anthropology and natural history department diligently carry out important work categorizing, labeling, and organizing artifacts that help the museum gain more information on the subject and help the overall management of the collection.

We also have volunteers manage the preservation and organization of our textiles collection. All of PPHM's volunteers are integral to the museum.

Our volunteers commit their time and faithful work in all departments: education, firearms, archaeology, exhibits, and collections. Their work is indispensable to the running of the museum. PPHM could not do without our wonderful volunteers and we highly appreciate each and everyone's dedication.

Bobbie Allen
Mark Allen
Sarah Alrimaly
Macey Anderson
Darlene Brasington
Brady Burbank
Andy Burcham
Jesus Campos Del Rio
Logan Canada
Blayre Catalyn
Wyatt Clark
Tom Cole
Martin Cosio
Gianella Diaz
Janette Dickenson
Kaitlyn Dougherty
Charis Dupuis
Elba Duron
Shaylee Fairchild
Joe Faulkenberry
Erin Frigo
Brianna Gonzales
Ryan Grant
Christian Howard
Victoria Huchinson
Douglass Hyde
Khaline Jacob
Tristen Jimenez
Blake Jones
Kyleigh Keadle
Larry Keadle
Nate Koverna
Kyle Krieger
Pedro Lama- Colon
LDS Church
Alvin Lynn
Kathleen Mathews
Abigail McGill
Bud McGill
Dylan Messersmidt
Jesus Monlina
Douglas Moreland
Tyler Morgan

Hannah Morris
Karen Morris
Glenn Morris
T.J. Ortiz
Peggy Pollard
Beth Remlinger
Shaiane Risher
Shae Breznick
Monica Shaffer
Kaitlyn Sherwood
Karen Sickler

Nathan Simonton
Tori Sims
Joanna Summerlin
Alison Tipton
Nathalia Toribio
Ryan Vela
Alex Walker
Sterling White
Holly Winter
Debra Woody





Panhandle-Plains Historical Museum *LONESOME DOVE* Staff 2018

MUSEUM STAFF

Panhandle-Plains Historical Museum

Administration

Carol Lovelady, Director
 Heather Friemel, Associate Director of
 Finance and Outreach
 Buster Ratliff, Development Officer
 Kristin Johnson, Visitor Services and Accounts Manager
 Heidi Stricker, Administrative Assistant to Director

Curatorial

Michael Grauer, Associate Director of Curatorial Affairs/
 Art and Western Heritage
 Veronica Arias, Ph.D., RPA, Curator of Anthropology and
 Natural History
 Miranda Bible, Curatorial Assistant Archeology
 Nelda Monroe, Assistant to Art and Exhibits Department

Education

Samantha Biffle, Programs Coordinator
 Sierra Grange, Education Assistant

Exhibits

Micah Hanbury, Exhibits Specialist II
 Seth Hanbury, Exhibits Specialist II
 Andrew Miller, Exhibits Specialist II/Design

Marketing

Stephanie Price, Communications and
 Marketing Director
 Megan Nelson, Marketing Assistant

Registrar and Collections

Darby Reiners, Interim Registrar

Research Center

Warren Stricker, Director of Research Center
 Millie Vanover, Research Assistant

DONORS

Panhandle-Plains Historical Museum

\$100,000+

Gayden Family Foundation

\$50,000+

The C.J. and Syble Fowlston Charitable Trust

\$25,000+

Dr. Charles K. Hendrick

\$10,000+

Amarillo Chamber of Commerce
American International Group, Inc.
Mr. and Mrs. William A. Attebury
Canyon Economic Development Corporation
City of Canyon, Texas
CNS Pantex
The Josephine Anderson Charitable Trust
Mr. and Mrs. Robert D. Josslerand
Mr. and Mrs. Samuel B. Lovelady
Ms. Helen Piehl
Roco Agape Charitable Foundation
West Texas A&M University

\$5,000+

Bank of America
Mrs. Mary Kay Dammier
Mr. Paul F. Engler
Mr. and Mrs. Ted Paup
The Waite and Genevieve Phillips Foundation
Mr. and Mrs. Gene Scivally
Texas Cattle Feeders Association
Texas Commission on the Arts

\$2,500+

Mr. and Mrs. Jim Brown
Mr. and Mrs. Allen Durrett
The Sybil B. Harrington Foundation
The Robert Moody Foundation
Mr. Stanley Schaeffer
Sidwell Family Foundation

\$1,000+

Mr. Sterling Adams and Ms. Mary Bearden
Mr. and Mrs. Ronald Anderson

Mr. and Mrs. Mark E. Bivins
Mr. Jim J. Brewer
Mr. and Mrs. W.H. Brian Jr.
Mr. H.C. Brillhart Jr.
Margaret C.B. and Spencer N. Brown Foundation
Dr. and Mrs. Turner M. Caldwell III
Mrs. Dianne Capell
Mr. Harold D. Courson
The Joyce G Courson Estate
Darden Family Charitable Foundation
Mrs. Linda M. Davis
Mr. and Mrs. Robbin Dawson
Mr. John A. Decker Jr.
Mr. and Mrs. Erich Drochner
Education Credit Union
Dr. and Mrs. Clinton Esler
Mrs. Mary E. Fatheree
Mr. and Mrs. Stinson Gbner
Mr. James P. Goodnight
Dr. and Mrs. Kenneth Hamlett Jr.
Mr. and Mrs. Jerry H. Hodge
Dr. and Mrs. Douglass Y. Hyde
Mrs. Claudette L. Landess
Mr. J.B. Lane
Mr. Garth Merrick
Mr. and Mrs. Jay O'Brien
Mr. and Mrs. Don L. Patterson
Mrs. Al' Louise Ramp
Ms. Cornelia W. Ritchie
Mr. and Mrs. Blaine Roberts
Mrs. Claire W. Snead
U.S. Trust
Mr. and Mrs. Don Max Vars
Mr. and Mrs. James Whitton
Ms. Amelia Winton

\$500+

Mr. and Mrs. Tom Bivins
Mr. and Mrs. Billy Blakeley
Bruckner Family Foundation
Mr. Gregg Bynum
Mr. and Mrs. Tom T. Christian
Mr. and Mrs. J. Michael Connor
Mr. and Mrs. Marvin L. Cooper
Mr. and Mrs. Steve Cornett
Ms. Diana Cox
Mr. and Mrs. Tony Freeman

Mr. Richard L. Harris
Mr. and Mrs. Bob Hatton
Mr. and Mrs. Dale Hazlewood
Mr. and Mrs. Joe K. Howell
Mr. and Mrs. Lance Jones
Dr. and Mrs. Richard F. McKay
Ms. Margaret A. Mead
Mr. and Mrs. Jack Miller
Mr. and Mrs. John Noah
Mr. and Mrs. Lawrence Oeschger
Officewise Furniture & Supply
Mr. and Mrs. Larry J. Orman
Mr. and Mrs. Glen Parkey
Mr. and Mrs. John M. Patterson
Mr. and Mrs. Jim Pollard
Mr. and Mrs. Joseph H. Pool
Mr. and Mrs. Gene Rahlh
Mrs. Judith B. Sellers
Mr. Joe Bill Sherrod
Mr. and Mrs. Joe Street
Mr. Scott Taylor
Mr. David Vineyard
Mr. and Mrs. John W. Walker II
West Texas A&M University
Foundation

\$100+

Mr. R.W. Anderson
Bent's Fort Chapter SFTA
Mr. and Mrs. Brad Bentley
Dr. and Mrs. Peter Bickers
Mr. and Mrs. William C. Boyce
Ms. Linda Brian
Ms. Ruth E. Bryant
Dr. and Mrs. Dennis Canon
Cenveo
Mr. Scott Chase
Mr. and Mrs. David Clinkscale
Ms. Carolyn Crow
Mr. and Mrs. Walt Davis
Mrs. Bitsy M. Downing
Ms. Mary Emeny
Mr. and Mrs. Meeks Etchison
Mr. and Mrs. Ed Fancher
Ms. Madison Fatheree
Mr. Taylor Fatheree
Dr. and Mrs. William P. Hale
Dr. and Mrs. William L. Hallerberg
Mr. J. Michael Harter and Ms.

Monique M. DuPuis
Mr. and Mrs. Billy Hawkins
Mr. and Mrs. Durwood Henderson
Mr. and Mrs. Richard Jackson
Mr. and Mrs. Gary W. James
Mrs. Sharon Jelinek
Mr. and Mrs. David Jones
Mr. Thomas M. Keel
Mrs. Lorene Lacer
Mr. and Mrs. Bob Law
Mr. and Mrs. Michael Leheska
Dr. Juliana Lightle
Dr. and Mrs. Russell C. Long
Mr. and Mrs. Todd Lovett
Dr. and Mrs. Paul Matney
Mr. and Mrs. Richard McElreath
Mr. Dee Miller
Ms. Susan Milligan
Mr. and Mrs. Doyle W. Moore
Mr. and Mrs. Gary Moore
Mr. and Mrs. Herschel Neal
Newport Fund
Ms. Jeanette Novarina
Dr. and Mrs. James M. Oswald
Mr. and Mrs. Doug Owens
Panhandle PBS
Mr. and Mrs. Larry Petty
Mr. and Mrs. Lawrence G. Pickens
Mr. and Mrs. Rhett Plank
Mr. Edward Scott Jr.
Mr. and Mrs. Samuel S. Scott
Mr. Kenneth D. Seyffert
Mr. and Mrs. John R. Skaggs
Mr. and Mrs. Dale A. Smith
Ms. Mary Kay Snell
Mr. Winston Stahlecker
Mr. and Mrs. Buddy Stephens
Mr. and Mrs. James D. Thompson
Ms. Judy Tolk
Dr. and Mrs. William Townsend
Mr. Robert C. Vincent
Mr. Perry A. Wakefield Jr.
Mrs. Patsy Walker
Ms. Winifred F. Walker
Mr. and Mrs. J. Mal Whitsett
Wiegand Family Fund

MEMBERSHIP

Panhandle-Plains Historical Museum

Hattie Anderson Visionary

Mr. and Mrs. Samuel B. Lovelady
Mr. and Mrs. Ted Paup

Goodnight Circle

Mr. Sterling Adams and Ms. Mary Bearden
Mr. and Mrs. William Attebury
Mr. and Mrs. Steven Beckham
Mr. and Mrs. W.H. Brian Jr.
Mr. Jim J. Brewer
Mr. and Mrs. Thomas Bunkley III
Mr. and Mrs. J. Michael Connor
Dr. and Mrs. Kenneth A. Crossland
Mrs. Mary Kay Dammier
Mr. and Mrs. Robbin Dawson
Mr. and Mrs. Erich Drochner
Mr. and Mrs. Allen Durrett
Mrs. Patricia Fisher
Mr. and Mrs. Joseph W. Foran
Pat Hickman Happy State Bank
Dr. Charles K. Hendrick
Mr. and Mrs. Jerry H. Hodge
Mr. and Mrs. Joel Hogue
Dr. and Mrs. Douglass Y. Hyde
Ms. Barry Jones
Mr. and Mrs. Robert D. Josslerand
Mr. J.B. Lane
Mr. Wales Madden, Jr.
Dr. and Mrs. John P. McKinley
Mr. and Mrs. Jack Miller
Mr. and Mrs. Will Miller
Mr. and Mrs. Kevin Nelson
Mr. and Mrs. Don L. Patterson
Mr. and Mrs. Joseph H. Pool
Mr. and Mrs. Lenny J. Sadler
Mr. Stanley Schaeffer
Mr. and Mrs. Jeffrey M. Sone
Julie Phillips
The Waite and Genevieve Phillips Foundation
Mr. and Mrs. Ron Watts
Mr. and Mrs. David Wheeler
Dr. and Mrs. David C. Woodburn

Patron

Gary Molberg, Amarillo Chamber of Commerce
Peggy Bruckner, Bruckner Family Foundation
Mr. and Mrs. Dale Buckner

Mr. Harold D. Courson
Mrs. Linda M. Davis
Mr. and Mrs. Erich Drochner
Mr. Paul F. Engler
Ms. Lilia Escajeda
Mr. and Mrs. Tony Freeman
Dr. and Mrs. Kenneth Hamlett, Jr.
Mr. Richard L. Harris
Mr. and Mrs. Jack Hudgins
Mr. and Mrs. Roy Jarnagin
Mr. and Mrs. Lance Jones
Ms. Ruth Ann Jones
Mr. and Mrs. John Kritzer
Mr. and Mrs. John H. Marmaduke
Ms. Margaret A. Mead
Mr. and Mrs. Lawrence Oeschger
Mr. and Mrs. Larry J. Orman
Ms. Helen Piehl
Dr. and Mrs. Bruce Pistocco
Mr. and Mrs. Joseph Price
Greg Mitchell, Toot 'n Totum
Mrs. Priscilla H. Wilson
Ms. Amelia D. Winton

Supporter

Dr. and Mrs. Malouf Abraham Jr.
Mr. Travis Anglin
Mrs. S. Spencer N. Brown
Mr. Gregg Bynum
Dr. and Mrs. Dennis Canon
Mr. and Mrs. Jim Childers
Mr. and Mrs. Marvin L. Cooper
Mr. Charles E. Cooper
Mr. and Mrs. Larry Cunningham
Dr. Don T. Curtis
Mr. Thomas Doneker
Mr. Clint Esler
Mrs. and Mr. Heather A. Friemel
Mrs. Eleanor Glazener
Dr. and Mrs. William P. Hale
Mr. and Mrs. Billy Hawkins
Mr. and Mrs. Joe K. Howell
Mrs. Howell
Mr. and Mrs. Glendon Jett
Mr. Monty Johnson
Mr. and Mrs. David Jones
Mr. Charles and Dr. Georgia Kitsman
Mrs. Orland G. Lacer
Mr. David M. Laing
Mr. and Mrs. Don Lee
Mrs. Virginia I. Maynard

Mr. and Mrs. Joby Mills
Mr. and Mrs. John Noah
Dr. Bonnie Pendleton
Mr. and Mrs. Gene Rahlh
Mr. Buster Ratliff
Mrs. Clara H. Ratliff
Mr. and Mrs. Joe D. Rogers
Mr. and Mrs. Gene Scivally
Mr. and Mrs. John R. Skaggs
Mr. Winston Stahlecker
Mrs. and Mr. Thorpe
Mr. and Mrs. John W. Walker, II
Mrs. Patsy Walker
Mr. and Mrs. James Whitton
Mr. and Mrs. Donald M. Williams
Mr. and Mrs. Larry E. Witthar

Contributor

Mr. and Mrs. Mark B. Anderson
Mr. and Mrs. Ronald Anderson
Mr. and Mrs. Kevin Ball
Dr. and Mrs. Howard L. Berg
Mr. Eric Berg
Dr. Gayle H. Bickers
Dr. Peter Bickers and Dr. Gayle H. Bickers
Mr. and Mrs. Kent Birkenfeld
Mr. and Mrs. Mark E. Bivins
Mr. and Mrs. Jim Brown
Mr. and Mrs. Mike Bryant
Mr. and Mrs. Rocky M. Cain
Mrs. Dianne Capell
Mr. Scott Chase
Mr. Steve Cornett
Mr. and Mrs. Bill Countiss
Ms. Diana Cox
Mr. and Ms. Timothy Craddock
Dr. and Mrs. Hugh Bob Currie
Ms. Margaret Dean
Mr. Peter J. Durkin
Mr. and Mrs. Kurt Ecker
Mr. and Mrs. Meeks Etchieson
Mrs. Mary E. Fatheree
Michelle Fields
Mr. J. Evetts Haley Jr.
Dr. and Mrs. William L. Hallerberg
Mr. and Mrs. James Hampsten
Mrs. Genie Harriman
Mr. and Mrs. Bill Harris
Mr. and Mrs. Royce Harris
Ms. Laurie Higgins

Dr. Alex Hunt and Dr. Bonnie Roos
Mr. V. J. Jordan Jr.
Mr. Michael F. Kosuth
Mr. Alan LaFon
Mrs. Pam Landis
Mr. and Mrs. Bob Law
Dr. and Mrs. Russell C. Long
Mr. and Ms. Martin Lopez
Mrs. Raymond Martin and Victoria Thompson
Dr. and Mrs. Paul Matney
Mr. and Mrs. Mike McComas
Dr. Richard F. McKay
Ms. Brenda Michael
Mr. Dee Miller
Mr. and Mrs. Jule Minium
Mr. and Mrs. Doyle W. Moore
Mr. Wayne Moore
Mrs. Tamela Moore
Mr. Joe M. Morris
Dr. and Mrs. Gary Nall
Mr. Scott Nelson and Dr. Lisa A. O'Brien
Mrs. M.J. Nelson
Ms. Jeanette Novarina
Mr. and Mrs. Bill O'Brien
Mrs. Mary Martha Oles
Mr. and Mrs. Denny R. Park
Mr. and Mrs. John M. Patterson
Dr. Charles Porter
Dr. and Mrs. William T. Price
Mr. and Mrs. Rusty Ratliff
Mr. and Mrs. Randy Rikel
Mr. and Mrs. Jack Rogers
Mr. Joe D. Rogers
Mr. and Mrs. Harold E. Root
Ms. Louise C. Ross
Mr. and Mrs. Mendell Schelin
Dr. and Mrs. Gerald Schultz
Mr. and Mrs. Buz Sickler
Ms. Cheryl K. Simonsen
Mr. George Smith
Mr. and Mrs. Maurice L. Sproul
Mr. and Mrs. Buddy Stephens
Mr. D. Barry Stone
Ms. Heidi Stricker
Dr. William Townsend
Mr. and Mrs. Eddy Turner
Mr. and Mrs. W. Champ Turner
Mr. Don Max Vars
Dr. Gregg Veneklasen

Mrs. Amy Welbaum
Dr. and Mrs. Daryl West
Mr. William Winter
Friends & Family
Mr. and Mrs. James A. Ayres
Sharon Bussey
Ms. Ann Carson
Mr. and Mrs. Richard L. Carter
Mr. and Mrs. Ross Clopton
Mr. and Mrs. George Cook
Mr. and Mrs. Scott Downing
Mr. and Mrs. David Driskill
Mr. John Early
Mr. and Mrs. Gary Griffin
Mr. and Mrs. Jack W. Hayward
Mr. Gabe Howell
Mr. and Mrs. Toby Hyden
Mr. and Mrs. A. C. Moore
Ms. Jan Neal
Mr. and Mrs. Ron Odell
Mr. and Mrs. David O'Dell
Mrs. Dawn Stephens
Dr. Jean Stuntz
Mr. and Mrs. Phil Woodall
Mr. and Mrs. Alex Woolsey
Mr. and Mrs. Jeff Worsham
Col. Beverly Abshere and LCDR
Philip Abshere
Mrs. Talea Alberson
Mr. and Mrs. Hardy R. Allen
Dr. and Mrs. Justin Amaro
Mr. and Mrs. Gregory D. Anderson
Mr. Jonathan Anderson
Cdr. and Mrs. James Angelo
Dr. Veronica Arias
Mr. John Attebury
Mrs. Martha Lee Babb
Dr. T. Lindsay Baker
Mrs. Lou Baker
Frank M. Bascon
Mr. and Mrs. Larry Batchlear
Dr. Emily Baxter
Ms. Samantha Biffle
Mr. and Mrs. Doug & Kathie
Bingham
Mr. and Mrs. Mark Blankenship
Dr. and Mrs. Richard Bowers
Mr. and Mrs. William C. Boyce
Mr. and Mrs. Jeremy Bradford
Mr. John Bradicich
Mr. and Mrs. Ray Bradley
Mr. Casey Bradshaw
Mr. and Mrs. Phillip Brent
Miss Jodi Brewer
Mr. JJ Brewer
Mr. P.K. Brian
Ms. Linda Brian
Mr. and Mrs. Bill Briscoe
Mr. and Mrs. Harry Britt
Mr. and Mrs. Andy Burcham
Mr. and Mrs. W. H. Butler
Mr. and Mrs. Rohn Butterfield
Dr. and Mrs. James V. Calv
Mr. Thomas R. Cambridge
Mr. and Mrs. Gilbert W. Carlton
Mr. and Mrs. Andy Carter
Dr. Joseph C. Cepeda
Ms. Darlene Chandler
Mr. Bill Cheek
Mr. and Mrs. Tom Cole
Mrs. Deloris J. Cole
Mrs. Cathy Coleman
Mr. and Mrs. James R. Conkling
Ms. Brandy Cox
Mr. and Mrs. Cliff Craig
Ms. Janice Cranmer
Ms. Carolyn Crow
Dr. Don T. Curtis
Mr. and Mrs. Teel Curtis
Mrs. Tiffany Curtis
Mr. and Mrs. Josiah M. Daniel, III
Ms. Hilary Dawson
Paula Edwards
Deaf Smith County Historical
Society, Inc.
Ms. Janet Dickson
Mr. and Mrs. Scott Dillard
Mary Emeny
Ms. Cynthia Evans
Mr. and Mrs. Ed Fancher
Mr. James D. Fanning
Mr. and Mrs. Joe Faulkenberry
Mr. and Mrs. John Featherstone
Mr. and Mrs. Robert G. Ferguson
Mrs. Lynda Flowers
Ms. Lynda Flowers
Mrs. Karen Friemel
Mr. Dean Frigo
Mrs. Emily Garner
Ms. Lou Ann Garrett
Mrs. Jo Carol Gassaway
Mrs. Natasha Gehring
Mr. Tomasz Gibaszek
Mr. and Mrs. Tim Gilliland
Dr. and Mrs. James A. Glasscock
Ms. Sierra Grange
Mr. and Mrs. Dee Griffin
Mr. and Mrs. Ray E. Grimes
Ms. Melissa Griswold
Mr. Norwood V. Guleke
Mr. and Mrs. Jarvis Hampton

Mr. and Mrs. Mark Hanna
Dr. Trudy Hanson
Mr. and Mrs. Allen Hare
Mr. and Mrs. Michael Harrison
Mr. J. Michael Harter and
Ms. Monique M. DuPuis
Mr. and Mrs. John Hatchel
Mr. and Mrs. Bob Hatton
Mr. and Mrs. Joseph Havlik
Mr. and Mrs. Dale Hazlewood
Mr. Edward H Heshner
Mrs. Kristopher Hickman
Mr. Scott Higginbotham
Mr. and Mrs. Tom Higley
Ms. Betty Hill
Ms. Doris Hill
Mr. Gary Hinders
Mr. and Mrs. Bill Hisey
Mr. Brady Hochstein
Ms. Paige Hochstein
Mr. and Mrs. Tom Hodges
Mr. Eddie Holcomb
Mrs. Nola Hopkins
Mr. and Mrs. Jack Howell
Mr. and Mrs. George E. Huskey
Mr. and Mrs. Earl Hyatt
Dr. and Dr. Ryan Hyde
Mr. and Mrs. John Irwin
Mr. and Mrs. Richard Jackson
Mrs. Sharon Jelinek
Mr. and Mrs. James N. Jennings
Mr. Caleb Johns
Dr. and Mrs. Harold Johnson
Mr. and Mrs. Aaron Johnson
Mr. and Mrs. David W. Johnson
Mrs. Betty B. Johnson
Mrs. Sylvia Johnson
Mr. W.M. Jones
Ms. Anne C. Jones-Thomas
Mr. and Mrs. David Kampschroeder
Dr. Paul Katz
Mr. Thomas M. Keel
Mr. and Mrs. Dale Keeney
Mr. and Mrs. Phil R. Kimbrough
Mrs. Lola Mae King
Mr. and Mrs. Tom Koumalats
Mrs. Claudette L. Landess
Mr. and Mrs. Mark and
Stephanie Lanham
Mr. and Mrs. Rodney Laubhan
Mrs. Jacquelyn Leak
Mr. Jerry Leatherman
Mr. and Mrs. Jared Lee
Mr. and Mrs. Jim LeMarr
Ms. Lessie Lennon and
Ms. Lynn Hotchkiss
Ms. Juliana Lightle
Mr. and Mrs. Barbara Lowe
Mr. and Mrs. Michael J. Lowrey
Mr. and Mrs. Alvin Lynn
Mr. and Mrs. Dempsey Malaney
Mr. and Mrs. D. L. Malicoat
Ms. R. Elaine Maples
Mr. and Mrs. Jerry L. Martin
Mr. and Mrs. Wesley Masters, III
Mr. and Mrs. Glen McCain
Mr. Bill McCarron
Mr. Joe Bob McCartt
Mr. and Mrs. James R. McCasland
Mr. Gordon McConnell
Mrs. Lindsey McDivitt
Ms. Leah McLain
Dr. Kevin McLeod
Mr. and Mrs. Russell Megert
Mr. and Mrs. Michael D. Meredith
Mr. and Mrs. Johnnie W. Miller
Mr. and Mrs. Nicholas Miller
Dr. and Mrs. Marvin Moon
Dr. and Mrs. Henry C. Moreland
Mr. and Mrs. Joe Morgan
Mr. Kenneth L. Mott
Mr. and Mrs. William Murchison
Mr. and Mrs. Edgar R. Musser
Mr. and Mrs. Herschel Neal
Mr. and Mrs. David Neeley
Mr. and Mrs. Mike Neus
Mrs. Clara Ruth Newsom
Mr. and Mrs. Ron Odell
Mrs. Debby Ortega
Dr. and Mrs. James M. Oswald
Ms. Martha Paetzold
Ms. Kay Paine
Ms. Amanda Palmer
Mr. and Mrs. Tom R. Patterson
Mr. and Mrs. Hank Paup
Dr. and Mrs. Phillip Periman
Dr. and Mrs. Peter L. Petersen
Mr. and Mrs. Arlie Petty
Mr. and Mrs. Lawrence G. Picken
Mr. and Mrs. Kenneth Pirtle
Mr. and Mrs. Rhett Plank
Mr. and Mrs. Jim Pollard
Ms. Ginger Porter
Mr. and Mrs. Lewis Pratt
Dr. and Mrs. Keith Price
Rev. and Mrs. Marston Price
Mr. and Mrs. Eric Pullen
Mr. and Mrs. Ira Purdy
Mr. and Mrs. Erica Raef
Ms. Sherry Ratterree
Miss Brandy Razo

Mr. and Mrs. Daniel Reagan
Miss Darby Reiners
Mr. and Mrs. Alan Rhodes
Ms. Jane Roberts
Ms. Michelle Roberts
Mr. Raymond Roy
Mr. and Mrs. Ken Schneider
Mr. and Mrs. Samuel S. Scot
Mr. Kenneth D. Seyffert
Mrs. Claire Shear
Mr. and Mrs. J. Malcolm Shelton IV
Mr. Joe Bill Sherrod
Mr. and Mrs. Joseph Shipp
Mrs. and Mr. Patricia Simmons
Bernadette DeBrango
Sir Speedy
Mr. Carl Sjogren
Mr. and Mrs. Dale A. Smith
Mr. and Mrs. Donnie Smith
Mr. and Mrs. Larry Smith
Mr. Charles D. Smith
Mr. Nathan D. Smith
Mrs. Fairy G. Smith
Mr. and Mrs. Garry Snider
Mr. and Mrs. Michael Sparks
Ms. Amelia S. Spurlock
Mr. J. Pat Stephens
Ms. Sherrie Stepp
Mr. and Mrs. Tim Stogner
Dr. Ryan Street
Mr. Douglas W. Tanner
Mr. and Mrs. Kim E. Taylor
Mr. and Mrs. Trent Taylor
Texas Woman's University
Mr. and Mrs. James D. Thompson
Mr. Clarence E. Thompson
Mr. and Mrs. Clayton Thorne
Ms. Janis Thorne Poff
Dr. Meg Thornton
Ms. Judy Tolk
UC Davis-Shields Library
Mr. and Mrs. John Upshaw
Mr. and Mrs. Jim Uselton
Mr. and Mrs. Mark Warren
Mr. and Mrs. George T. West
Mr. and Mrs. Michael Wied
Dr. David Wilcox
Mr. Alvin Williams
Mr. William Williams and
Ms. Dyma Johnson
Mr. James M. Willis, Jr.
Mr. Jones Witcher and
Ms. Carol Autry
Mr. Larry Wolff
Mr. and Mrs. Steve Woodard
Mr. and Mrs. John Woodward
Mr. and Mrs. Ronald Wooten
Mr. and Mrs. Jeff Worsham
Ms. Rita Wynn
Mr. and Mrs. Stephen Zimmer

Panhandle Pioneers

Mr. B.R. Barfield
Pampa Gray Foundation
Mrs. Linley Tonkin Solari
Mr. Allen M Tonkin Jr
Mrs. Howard Hampton
Mr. Earl Weed
Mrs. Norma P. O'Neal
Ms. Cornelia W. Ritchie
Mr. Robert C. Vincent
Mr. Thomas E. Alexander
Brett Strebeck
Amarillo Road Company
Linda Peirce
American General Annuity
Mr. R.W. Anderson
Mr. William L. Arrington
Mrs. Myrtle Miller Austin
Edward Bradley, AutoInc.
Ashley Allen
Bank of America
Mr. J.C. Barnes Jr.
Mr. Jerry A. Barton
Mrs. Eugene S. Blasdel
Mr. Ralph C. Blodgett
Mr. Peter C. Bowes
Mrs. Kathleen Brillhart
Mrs. Helen S. Burton
Dr. and Mrs. Turner M. Caldwell III
Mr. and Mrs. Miles Childers
Mr. and Mrs. Rit Christian
Dr. and Mrs. Martin I. Cohen
Dr. and Mrs. Jeff Cone
Mr. and Mrs. Marvin B. Cornette
Mr. and Mrs. James C. Crabb
Mr. Michael J. Culwell
Mr. S. E. Curry
Mr. and Mrs. Walt Davis
Steve Howell
Deaf Smith Electric Coop Inc
Mr. Houston Deford
Mr. and Mrs. Stuart D. Dowlen
Ms. Anita H. Eisenhauer
Carol Monroe
Esther McCrory Chapter DAR
Mrs. Shelley Woodburn Faust
Gene Phillips
First National Bank of Panhandle
First State Bank of Dumas

Emily Bates
FirstBank Southwest, N.A.
Mrs. Yvonne Franklin
Mrs. C. R. Gaut
Mr. James O. Guleke II
Mrs. Gaynor N. Guleke
Mr. Gary Gunter
Dr. James A. Hanson
Mr. W. V. Harlow III
Mr. and Mrs. Ed Harrell
Mr. Dick Harris
Mrs. Betty Henry
Mr. Nolon Henson Jr.
Mrs. Thomas W. Herrick
Timothy H. Holloway
High Plains Christian Ministries
Foundation
Mr. T. D. Hobart
Mr. Johnny L. Hoggatt
Mr. Jim D. Hubbard
Mr. Gary W. James
Mr. and Mrs. Marvin L. Jones
Mr. Jack G. Jones
Mrs. E.K. Jones
Ms. Judith Jones
Mrs. Judy T. Kastrop
Mr. and Mrs. Jerrie Keith
Ken Kelley, Kelley Family
Foundation
Mr. and Mrs. Merle Kilpatrick
Mrs. Gwenfred Lackey
Mr. and Mrs. Frank A. Ladd
Ms. Catharine Denise Lane
Mrs. Stan Lark
Mr. Robert G. Lee
Mr. George Lokey
Mr. Joe T. Lovell
Mr. Don Maddox
Mr. D. L. Mahanay
Mrs. Shelley T. Marcos
Mrs. Dean McNaughton
Ruth S. WallMilligan (J. Lee), Inc.
Mrs. Cynthia T. Mills
E. W. Henderson, Molyneux (Amos)
Charitable Trust
Mr. John T. Montford
Mr. Morris G. Moreland
Mr. and Mrs. Edward L. Morris
Mr. S. T. Morris
Mr. and Mrs. William H. Neubauer
Mr. and Mrs. Lee Nowlin
Mr. and Mrs. Randy Nuttall
Mr. and Mrs. Jay O'Brien
Mr. Jon T. Oden
Panhandle Steel Buildings
Mrs. Richard L. Parker
Mr. and Mrs. Donald Paxton
Mr. and Mrs. James R. Pfluger
Mr. Eugene Phillips
Dr. Randal E. Posey
Mr. Walter Powell
Dr. B. Byron Price Jr.
Randall Co. Commissioners Court
Mrs. Betty Rathjen
Mr. R. Thomas Ray
Mrs. W.R. Richey
Mrs. Mary Riffe
Dr. and Mrs. Charles W. Rimmer
Mrs. Horace Rivers
Mrs. R.L. Robertson
Mr. Donald F. Schofield
Ms. Nancy Seewald
Mr. and Mrs. Rolla H. Shaller
Mr. and Mrs. Bob Simpson
Mr. A.L. Smith
Mr. Robert L. Smith
Mr. Eric R. Sorensen
Mrs. Sam B. Stewart
John Crain Summerlee Foundation
Mr. Wilford Taylor III
Ross Wilson, Texas Cattle Feeders
Association
Clay Stribling, The Don & Sybil
Harrington Foundation
Thompsons of Canyon
Mr. Jack Franklin Turner
Mr. Richard Coble Turner
Mrs. Wendy K. VanDeventer
Mr. and Mrs. John Vincent
Mr. Weatherly C. Vincent
Mr. and Mrs. Garet Von Netzer
Mr. T.J. Wagner III
Mr. Richard C. Ware II
Mr. David M. Warren III
Mr. Stephen P. Warren
Ms. Stephanie Anne Warren
Mrs. Donald O. Watkins
Mr. Mike Wehrman
Jim D. Bryan, Wells Fargo
Mike Coomer, Wells Fargo
Mrs. Sharon E. White
Mr. Burk Whittenburg
Mr. Tom Whittenburg
Mr. W.E. Wilcox
Mrs. Betty F. Wilkinson
Mr. Sam Winters
Mr. Phillip K. Woodburn
Ms. Anne E. Worley
Mr. Phillip M. Zook

PPHM

PANHANDLE-PLAINS HISTORICAL MUSEUM

2503 4th Avenue, WTAMU Box 60967
Canyon, Texas 79016

panhandleplains.org