

Fort Worth STOCK SHOW — COMMERCIAL HEIFER SALE —

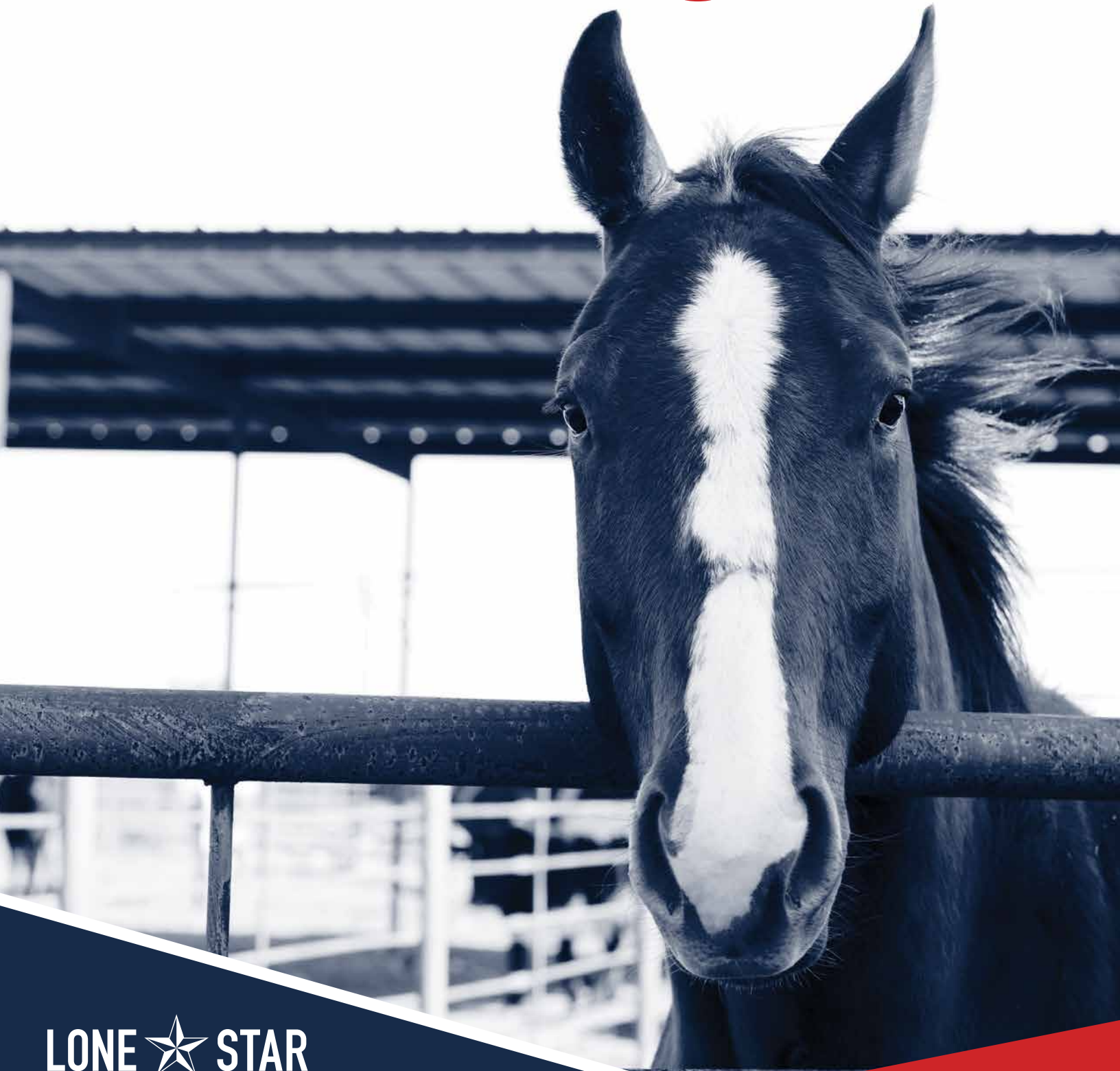


The premier spring event for cattlemen.



SATURDAY, *February 4*, 2023
West Arena, Fort Worth Stock Show - 3:30 PM - Fort Worth, TX

WHERE TRADITIONS
LIVE ON



LONE STAR
AG CREDIT

FINANCING YOUR PIECE OF TEXAS
800-530-1252

LoneStarAgCredit.com



JOIN US FOR THE INAUGURAL
GKB CATTLE & BARBER RANCH
SPRING BULL SALE



in Desdemona

12 NOON, THURSDAY, MARCH 16, 2023

GKB Cattle Sale Facility – Desdemona, Texas

GPS Address: 7440 TX 16, Desdemona, TX 76445

85 HEREFORD BULLS SELL... HORNED & POLLED

see these sale features on March 16!

GRAND CHAMPION PEN OF THREE HEREFORD BULLS
2023 CATTLEMEN'S CONGRESS



GKB 195C EXTRA DEEP B004 1308
P44271290 • 1/03/2021 • Polled



GKB 6034 CLAYTON 6068 1110
44231741 • 2/06/2021 • Horned



GKB 4892 CROSSFIT 670D 1140
44231756 • 2/01/2021 • Horned

GKB 8688 6011 BELLEAIR K102 ET

44368471 • 3/03/2022 • Horned

BR Belle Air 6011 x MCKY Monroe 8688 ET

CED-0.7 BW 2.9 WW 66 YW 114 MILK 37 REA .46 MRB .33 CHB 156

CHAMPION SPRING BULL CALF

2023 CATTLEMEN'S CONGRESS

CHAMPION SPRING BULL CALF

2023 NATIONAL WESTERN



*Don't miss **GKB** on*
THE AMERICAN RANCHER
the week of March 6th!



Since 1987

GARY BUCHHOLZ - (214) 537-1285

JAY CREAMER - (254) 707-2199

RAYMOND GUSHEE - (207) 256-7365

gary@gkbcattle.com | gkbcattle.com

7440 TX 16, Desdemona, TX 76445

Sale Facility located 75 miles west of Fort Worth

Catalogs mailed on request.
Please contact the ranch or
The sale manager.



Dustin N. Layton - (405) 464-2455

laytond@yahoo.com

Chisolm Kinder - (405) 747-4683

laytonauction.com





Make matings with intent.

We have the sires and programs to make your breeding program a success.



John Merrill, District Business Manager
john.merril@genusplc.com | 817.832.5286



GET ON THE LIST!

Sign up to receive ABS Beef News, sire updates,
and more directly in your inbox!

Scan this QR code with your smartphone's camera to go directly to absbeef.com!

STAY IN TOUCH



facebook.com/absbeef



[@absbeef](https://www.instagram.com/absbeef)

1.800.ABS.STUD | ABSBEEF.COM



FARMS®
SINCE 1909

SPRING BULL SALE

FEBRUARY 25, 2023 · 10:30 AM · CAMERON, TEXAS

FOR MORE INFORMATION, CONTACT ONE OF OUR TEAM MEMBERS:

TRACY WOODS
405.880.3866

TYLER GRAY
208.590.6167

JARROD PAYNE
308.870.6348

JILL GINN
806.570.6185

TO RECEIVE A SALE BOOK, PLEASE CALL 254.697.4401 OR VISIT 44FARMS.COM



Walmart 

A PROGRAM *to* SADDLE UP WITH

We invite you to consider being part of Prime Pursuits, a paradigm-changing program designed to bring together top producers with industry-leading genetics to deliver the best Angus beef to America's table through a partnership with Walmart.

To learn more, visit PrimePursuits.com or contact Warren White at 806.414.5858.



Sale broadcast live on
www.superiorclicktobid.com
800-422-2117

HOW TO PARTICIPATE AS AN ABSENTEE BUYER

VIEWING THE AUCTION

The auction will be broadcast online at Bid.SuperiorLivestock.com and the pre-recorded videos will also be hosted there. You do not need an account just to watch the auction or view videos of the sale offering.

ONLINE BIDDING

Go to Bid.SuperiorLivestock.com for Superior's new online bidding platform. If you have not registered there before you will need to create an account. The first time you register an account you will receive a confirmation e-mail that you must click on. Once you have completed this, select the auction you would like to bid on and click the "Request a Buyer Number" button. The first time you request a buyer number you will be sent a confirmation code via text. Enter that code in the login portal and you will receive a buyer number. This 2-step verification process will only have to be done once and in the future you will be able to simply login and request a buyer number and receive it instantly for any auction. Once you have successfully registered and received a buyer number it will show your name and buyer number on both the video preview page and the online bidding page when you are logged in. If you have an account at LiveAuctions.tv you may skip the registration process and use those login credentials to request a buyer number as LiveAuctions is a division of Superior Livestock. For more details on registering an account and also how to bid, you may watch a tutorial at Bid.SuperiorLivestock.com/how-it-works

TURN IN BIDS OVER THE PHONE

This is Superior's traditional method of buying cattle and is the suggested process for anybody who does not have consistent, high-speed internet. You still must register an account at Bid.SuperiorLivestock.com and request a buyer number. Once you receive a buyer number you will see the bid line phone number. Just watch the auction online and call in at least 2 lots ahead of the lot you are looking to bid on. A Superior Livestock representative will be with you on the phone and will assist you in placing bids.

FOR HELP WITH REGISTRATION OR ANY PART OF THE BIDDING PROCESS PLEASE CALL SUPERIOR AT (800) 422-2117.

RED CHAIN FEEDS

THE BRAND TO TRUST.



Since 1969, Gorman Milling Company has proudly supplied Texas cattle raisers with quality mixed feeds, pellets, cubes, and commodities under the Red Chain Feeds brand name. Whether you own a couple of cows or a couple thousand, we remain dedicated to providing you with the products and expertise needed to help your operation flourish.



REDCHAINFEEDS.COM

GORMAN MILLING COMPANY, INC
Gorman, Texas | (800) 588-2252

West Arena, Fort Worth Stock Show - 3:30 PM - Fort Worth, TX

The sale will take place in the West Arena, located in the west end of the Richardson Bass Building. The cattle may be previewed at the southeast corner of the Richardson Bass Building. Trailer Parking is south of the cattle barns.

Page 5

SCHACHER AUCTION SERVICES

Robert Schacher 817-219-0102
PO Box 33804, Fort Worth, Texas 76162
r_schacher@msn.com • www.schacherauction.com



Welcome Stock Show and Rodeo Fans,

It is hard to believe that I am entering my second decade presenting this premier event to you! I am proud to say that each year we have offered to you many of the best cattle in North America, and that each year our consignors have improved the selection of cattle that are presented to you.

While we live in interesting times, politically and environmentally, the base beliefs we as caretakers of the land and livestock have not changed, as we are held to a higher standard of living. I live in Fort Worth, and I have friends that know nothing about the industry and when I take them to the Rodeo or any event at the Stock Show, they are always amazed at the care and professionalism that we as agriculturists take when tending to our daily endeavors. We are truly blessed to be the shepherds that feed the world.

I might say it every year, "This is the best set ever, and please let our consignors know!" However, I truly believe that the cattle we are selling this year are the most functional and uniform set that we have ever gathered. Truly there is cattle available for any progressive rancher, whether it be a purebred operation, a show cattle program or the rancher that is looking for an efficient, productive cow with longevity, we have a set that will fit.

We are proud of our scholarship program, and I am happy to announce that we have achieved one of our top goals. We will award ten \$2,000 scholarships to deserving youth involved in Agriculture to further their education and training to continue the Legacy.

A special Thank You goes out to Sale Chairman, Phil Stoll and committee members Jay Purchase and Ralph Means, as well as, our crew that works diligently behind the scenes to make this sale run smoothly.

See you in Fort Worth February 3rd and 4th!

Sincerely,

Robert Schacher

JM Cattle Co.

Gause, Texas

Also look for our cattle in
San Antonio and Houston.

LOT 9

10 Brangus X F1 Braford Pairs

3-4 month-old calves at side by Irish Angus Bulls
This group of females are the solid black mates to the same great Cattle that JM brings each year. These incredible females are out of F1 Braford Cows and Sired by Brangus Bulls. These are the calf raising kind. They are the perfect size with a big foot and bone structure, huge ribbed with a big top. They have a very nice udder structure with the right teat set. The calves at side are sired by true Irish influence Angus bulls, and they are stout and soggy and will mash the scales down at weaning. This is the right package for the serious Rancher.



Jim McCord - Owner

979-279-5649 • 979-229-1205

Josh Kinslow - Manager

979-589-1149 • 979-574-7914



H HILLWOOD

LAND & CATTLE

A PEROT COMPANY®

Brett Burton | 817.430.2305 | HillwoodLandAndCattle.com

Scholarship Program

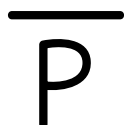
Annually we award scholarships to high school seniors who plan to seek higher education. The potential recipients are nominated by the ranches that participate in the Show and Sale. Those nominees are awarded the scholarships on the following criteria: 50% is based on financial need; 40% is based on Agricultural involvement and 10% is based on Academics. **Thank you to the following scholarship sponsors:**



THE WEEKLY LIVESTOCK REPORTER

Phil Stoll, Publisher/Editor
P.O. Box 7655, Fort Worth, TX 76111-0655
817-831-3147

The Southwest's oldest livestock newspaper, entering our 127th year of service to the livestock industry. Bringing more news and more response!



ADAMS FAMILY FARM AND RANCH

Justin, TX

Kevin Deal – 817-996-7659

Adams Family Farm and Ranch is a proud sponsor of the Commercial Heifer Sale Scholarship Fund. Producing High Quality, Red Angus Cattle in North Tarrant County.

RIDDLE RANCH

Scott Riddle

P.O. Box 8802, Waco, TX 76714
800-722-5157

Riddle Ranch supports the dreams of deserving young men and women in the Southwestern Exposition Commercial Heifer Sale College Scholarship Program.



HILLWOOD LAND & CATTLE

Brett Burton, Manager

9800 Hillwood Parkway, Ste. 300, Fort Worth, TX 76177
817-454-3165

Producing proven quality ranch raised Brangus cattle. Our cows are bred to handpicked Steiner Bulls. We offer private treaty sale of our replacement heifers and video sale of our feeder steers. We support the future of young cattlemen through the Southwestern Exposition Commercial Heifer Sale Scholarship Program.



THE MEAT BOARD

THE MEAT BOARD

844-693-6328
themeatboard.com
6314 Camp Bowie, Fort Worth, TX

At The Meat Board, we focus on providing premium, strategically-sourced meats and great service — with scientific techniques, skilled management and attention to every detail from ranch to your table, we deliver a truly worthy experience.



JM CATTLE COMPANY

Jim McCord
Gause, TX
979-279-5649

Jim McCord and JM Ranch have been longtime consignors to the Fort Worth Commercial Heifer Sale. Bringing you some of the finest and most functional cattle in the sale every year.



ROCKIN SHOCKER AND CATTLE DESIGN

Rockin Shocker Livestock and Cattle Design are proud to honor our friend, Kris Wilson, by providing this scholarship. Kris was a Cowboy - true to the traditions of ranching and his devotion to religion. We miss you.



GKB CATTLE

Waxahachie – Tarzan – Stephenville – Madisonville
Gary Bucholz – 214-537-1285
Kathy Bucholz – 214-537-1306
Jay Creamer – 254-707-2199
www.gkbcattle.com

GKB Cattle and the Bucholz Family are top producers of high quality seedstock in the Hereford, Angus, Brangus and Brahman breeds. They are especially proud of supporting and helping young people involved in the future of agriculture. Watch their website for Bulls and Show Heifers available throughout the year.



ABS GLOBAL

John Merrill
817-832-5286

ABS Global is the world-leading provider of bovine genetics, reproduction services, technologies, and udder care products. Marketing in more than 70 countries around the globe, ABS has been at the forefront of animal genetics and technology since its founding in 1941.

**BOEHRINGER INGELHEIM VETMEDICA INC.**

Mike Mustian
254-595-0034

2407 Welsch Lane, New Braunfels, TX 78132

Boehringer Ingelheim Vetmedica Inc. is a family owned and operated business dedicated to delivering high quality, innovation products to the cattle industry. The extensive product line includes such brand names as: Express Family of Vaccines, Pyramid Family of Vaccines, Triangle Family of Vaccines, Prespounce HM, Prespounce SQ, Bio Mycin 200, Alpha 7/MB-1, Bar Vac 7, Bar Vac 7/Som, Caliber 7, Eprinex, Long Range parasite control and Trich Guard Vaccines.

**LONE STAR AG CREDIT**

Julie Porter Mayfield

1612 Summit Ave. Suite 300, Fort Worth, TX 76102
817-332-6565 or 800-530-1252

Since 1917, Lone Star Ag Credit has assured their borrowers competitive interest rates on real estate loans, rural home loans, livestock, farm & ranch loans. Visit us on the web at www.LoneStarAgCredit.com or give us a call at 800-530-1252. Let Lone Star Ag Credit help you finance your piece of Texas.

**TRACER MINERALS**

Ethel Kelly – 214-662-4037
620-865-2041
www.tracerminerals.com

Enable your animals to reach their Full Potential utilizing science to work for your herd. Tracer Minerals Beef products include Starting Fluid the new standard in supportive therapy for cattle, horses, goats, and swine. Tracer Platinum Products, a concentrated mineral form made with very high levels of Amino Acid Chelated trace minerals including chelated magnesium and potassium. The Breeder Pack formula was designed by the man who wrote the nutritional specifications for the American Embryological Society. Tracer also features lines for dogs and Humans.

Sponsors**PURINA ANIMAL NUTRITION**

Dr. Doug Hawkins
10832 FM 916, Grandview, TX 76050
817-307-6872

Purina Animal Nutrition has been a leader in animal nutrition for over 110 years by adding value to the livestock industry. Purina has a full line of value added products such as Precon Starter, Accuration Starter, Accuration Cattle Limiters, Accuration Forage Extenders, Accuration Range Liquid, Sup-R-Lix, Sup-R-Blocks and Wind and Rain Minerals.

**NUTRITION PLUS**

Harry Higgins
903-821-1490
888-655-7587

www.nutritionplus.biz

Nutrition Plus is an American owned and operated company that provides a full line of quality livestock minerals and other nutrition supplements. We are dedicated to providing our customers with the best products and services in the industry, offering the best nutrition for your cattle (cow/calf, stocker, feedlot), horses, sheep and goats. "Branded For Quality" is not just a phrase but a philosophy of commitment in all that we do.

**RED CHAIN FEEDS**

Gorman Milling
302 E. Lubbock Street, Gorman, TX 76454
254-734-2252
Texas Watts Line: 800-588-2252

Gorman Milling Co. Inc. located in Gorman Texas, has been providing quality Red Chain brand livestock feed and supplements to Texas Ranchers for over 40 years and is proud to be a continued supporter of the Southwestern Exposition Commercial Heifer Sale.

**DATAMARS LIVESTOCK**

Datamars/Truetest is the official Tag company for the Fort Worth Commercial Heifer Sale.

**SW CATTLE CO.**

Chris Strickland 214-502-2413
Nathan Wofford 214-325-7203
Nevada, TX

SW Cattle Co. has been a consignor to the Commercial Heifer Sale for the past 5 years, and are proud sponsors of entertainment for the consignors. You can contact them for high end replacement females and many farm services. In Addition, they are providing equipment to the consignors for the movement of tack and feed through the week. Thank you SW for all of your help.

**CENTRAL LIFE SCIENCES**

Michael Hampton – 817-487-5138

Meaningful insect control scientifically developed with an environmental focus and applied with purpose. Look for our products on display at the Fort Worth Invitational Commercial Heifer Sale.

**AG WORKERS**

Marcus Hill

800-772-7424 Ext 1621

P.O. Box 88, Fort Worth, TX 76101

Since 1948, Ag Workers Mutual Auto Insurance Company has provided Texas agricultural professionals and their families with quality and comprehensive personal auto insurance coverage. By combining safe drivers and solid business practices.

CUSTOM LEATHER AWARDS

The Fort Worth Commercial Heifer Show and Sale is proud to have Leather Products made by Brian Skaggs as awards.



Brian Skaggs Leatherworks
PO Box 977
Lexington, OK 73051
skaggs cattle@gmail.com
405-370-8849



44 FARMS

Tracy Wood
Cameron, TX 76520
405-880-3866
tracy.wood@44farms.com
Lots 22, 28

4F

Tad & Kim Ferguson
Whitesboro, TX 76273
903-718-0788
kimferguson298@yahoo.com
Lot 4

7-0 CATTLE COMPANY

RICHBURG ANGUS
Danny Richburg
Amarillo, TX 79119
806-570-0406
danny.richburg@gmail.com
Lot 33

ACES WILD RANCH

Jed Watje
Milsap, TX 76066
817-600-1082
jedwatje@gmail.com
Lot 42

ADAMS FAMILY FARM AND RANCH

Kevin Deal
Justin, TX 76247
817-996-7659/817-688-2004
kevindeal@hotmail.com
Lot 40

AMIGO INVESTORS, LLC

Gabe Cocanougher
Decatur, TX
940-389-4519
ghcocan@yahoo.com
Lot 37

BAR W CATTLE AND HAY

Barry Watson
Whitney, TX
254-707-0303
barwcattleco@yahoo.com
Lot 13

BEAR CREEK RANCH

David Johnson
Leonard, TX 75452
David 214-415-1857
Blaine 903-449-1076
Lot 23

BELL CATTLE COMPANY

Dale Bell
Gainesville, TX 76240
940-736-5502
bellcattle1@gmail.com
Lot 1

CHISHOLM TRAIL RANCH

Robert Davis
Rhome, TX 76078
817-308-4818
bluecreek57@gmail.com
Lot 11

CIRCLE T RANCH/HILLWOOD

LAND AND CATTLE
Brett Burton
Ft Worth, TX 76177
817-454-3165
brett.burton@hillwood.com
Lot 12

COCANOUGH CATTLE

Gabe Cocanougher
Decatur, TX 76234
940-389-4519
ghcocan@yahoo.com
Lots 35, 36

DAUER HEREFORDS

Justin Dauer
Panhandle, TX 79068
806-683-7073
jpdauer7@gmail.com
Lot 39

DENNY CATTLE CO.

Don & Wendy Denny
Lubbock, TX 79424
806-789-7713
don@slategroup.com
Lot 29

DOUBLE CREEK FARM

Mike & Barbara Domel
P O Box 766
Meridian, TX 76665
254-749-3253-Matthew
mattdomel@gmail.com
Lot 32

FM RANCH SERIES

Steve Miller
214-534-2520
Clayton Hoff
940-631-4560
Archer City, TX 76351
Lots 25, 26, 27

GIBSON CATTLE COMPANY

Chad Gibson
Haskell, TX 79521
940-256-1422
chad@agcorp.com
Lot 41

GRISWOLD CATTLE

John Griswold
Stillwater, OK 76104
405-780-3300
macee@griswoldcattle.com
Lot 49

HALE CATTLE COMPANY

Bradley Hale
Miami, TX 79059
806-898-3345
bradleyhale27@yahoo.com
Lots 50, 51

HODDE LAND AND CATTLE

Bradley Hodde
Brenham, TX 77837
929-277-5082
bhodde@hlcc.com
Lot 17

ICE CATTLE COMPANY

Bradley Ice
Lindsay, TX 76250
940-727-9611
bradley_melissaice@yahoo.com
Lot 24

JCW CATTLE COMPANY

Jack Cordell Woodford
Crockett, TX 75835
936-204-4244
jcwccattleco@yahoo.com
Lots 5, 18

JM CATTLE COMPANY

Jim McCord
979-279-5649
Gause, TX 77857
979-574-7914 Josh Kinslow
jkinslow@rocketmail.com
Lot 9

LAVISTA RANCH

Ryan Phillips
Gatesville, TX 76528
254-216-9505/254-248-7183
ryan_p@yahoo.com
Lots 6, 16, 21

MC CATTLE COMPANY

Kendall Coleman
Archer City, TX 76351
940-631-2005
kendallcoleman80@icloud.com
Lot 38

MK RANCH

Betty Taylor Walter Knight
Era, TX 76238
940-736-5502/940-768-2773
mkranch@ntin.net
Lots 19, 20

PAYNE RANCH

Kyle & Mary Payne
Telephone, TX 78488
903-227-2094
Lot 10

RAFTER B CATTLE CO.

Steve Burkhart
Era, TX 76238
940-902-4009
Lot 14

ROCKIN' G CATTLE CO.

Terrance Cooper
Bokchito, OK 74726
903-449-0488
Lot 31

SANDERS & SONS

Chris Sanders
Clifton, TX 76634
254-386-6411
Wesley 254-326-8064
thesanders93@gmail.com
Lots 7, 8, 15

SIDWELL HAY AND CATTLE

Jerry Sidwell
Carpenter, WY 82054
970-381-4701
sidwellbrothers@gmail.com
Lots 34, 43, 44, 45, 46

SIMMENTALS OF TEXAS

Fred Schutz
Granbury, TX 76048
817-894-0563
Lots 47, 48

SW CATTLE COMPANY

Chris Strickland Nathan Wafford
Nevada, TX 75173
214-502-2413
Lots 2, 3

TWO IGO

Kevin & Clay Igo
Plainview, TX 79072
806-296-6460/806-774-8535
kigo.hfc@gmail.com
Lot 30



Extended-Release Injectable Parasiticide

5% Sterile Solution

For the Treatment and Control of Internal and External Parasites of Cattle on Pasture with Persistent Effectiveness
Not for use in female dairy cattle 20 months of age or older, including dry dairy cows. Not for use in calves to be processed for veal.

Not for use in breeding bulls, or in calves less than 3 months of age.

Not for use in cattle managed in feedlots or under intensive rotational grazing.

CAUTION: Federal law restricts this drug to use by or on the order of a licensed veterinarian.

INDICATIONS FOR USE

LONGRANGE, when administered at the recommended dose volume of 1 mL per 110 lb (50 kg) body weight, is effective in the treatment and control of the following internal and external parasites of cattle:

Gastrointestinal Roundworms	Lungworms
<i>Bunostomum phlebotomum</i> – Adults and L ₄	
<i>Cooperia oncophora</i> – Adults and L ₄	<i>Dictyocaulus viviparus</i> – Adults
<i>Cooperia punctata</i> – Adults and L ₄	
<i>Cooperia surnabada</i> – Adults and L ₄	Grubs
<i>Haemonchus placei</i> – Adults	<i>Hypoderma bovis</i>
<i>Oesophagostomum radiatum</i> – Adults	
<i>Ostertagia lyrata</i> – Adults	Mites
<i>Ostertagia ostertagi</i> – Adults, L ₄ and inhibited L ₄	
<i>Trichostrongylus axei</i> – Adults and L ₄	<i>Sarcoptes scabiei</i> var. <i>bovis</i>
<i>Trichostrongylus colubriformis</i> – Adults	

Parasites	Durations of Persistent Effectiveness
Gastrointestinal Roundworms	
<i>Bunostomum phlebotomum</i>	150 days
<i>Cooperia oncophora</i>	100 days
<i>Cooperia punctata</i>	100 days
<i>Haemonchus placei</i>	120 days
<i>Oesophagostomum radiatum</i>	120 days
<i>Ostertagia lyrata</i>	120 days
<i>Ostertagia ostertagi</i>	120 days
<i>Trichostrongylus axei</i>	100 days
Lungworms	
<i>Dictyocaulus viviparus</i>	150 days

DOSAGE AND ADMINISTRATION

LONGRANGE® (eprinomectin) should be given only by subcutaneous injection in front of the shoulder at the recommended dosage level of 1 mg eprinomectin per kg body weight (1 mL per 110 lb body weight). Each mL of LONGRANGE contains 50 mg of eprinomectin, sufficient to treat 110 lb (50 kg) body weight. Divide doses greater than 10 mL between two injection sites to reduce occasional discomfort or site reaction. Do not underdose. Ensure each animal receives a complete dose based on a current body weight. Underdosing may result in ineffective treatment, and encourage the development of parasite resistance.

LONGRANGE is to be given subcutaneously only. Animals should be appropriately restrained to achieve the proper route of administration. Inject under the loose skin in front of the shoulder (see illustration) using a 16 or 18 gauge, ½ to ¾ inch needle.

Sanitize the injection site by applying a suitable disinfectant. Clean, properly disinfected needles should be used to reduce the potential for injection site infections.

Body Weight (lb)	Dose Volume (mL)
110	1
220	2
330	3
440	4
550	5
660	6
770	7
880	8
990	9
1100	10



Withdrawal Periods and Residue Warnings

Animals intended for human consumption must not be slaughtered within 48 days of the last treatment. This drug product is not approved for use in female dairy cattle 20 months of age or older, including dry dairy cows. Use in these cattle may cause drug residues in milk and/or in calves born to these cows. A withdrawal period has not been established for pre-ruminating calves. Do not use in calves to be processed for veal.

Animal Safety Warnings and Precautions

The product is likely to cause tissue damage at the site of injection, including possible granulomas and necrosis. These reactions have disappeared without treatment. Local tissue reaction may result in trim loss of edible tissue at slaughter.

Observe cattle for injection site reactions. If injection site reactions are suspected, consult your veterinarian. This product is not for intravenous or intramuscular use. Protect product from light. LONGRANGE® (eprinomectin) has been developed specifically for use in cattle only. This product should not be used in other animal species.

When to Treat Cattle with Grubs

LONGRANGE effectively controls all stages of cattle grubs. However, proper timing of treatment is important. For the most effective results, cattle should be treated as soon as possible after the end of the heel fly (warble fly) season.

Environmental Hazards

Not for use in cattle managed in feedlots or under intensive rotational grazing because the environmental impact has not been evaluated for these scenarios.

Other Warnings: Parasite resistance may develop to any dewormer, and has been reported for most classes of dewormers.

Treatment with a dewormer used in conjunction with parasite management practices appropriate to the geographic area and the animal(s) to be treated may slow the development of parasite resistance.

Fecal examinations or other diagnostic tests and parasite management history should be used to determine if the product is appropriate for the herd/flock, prior to the use of any dewormer. Following the use of any dewormer, effectiveness of treatment should be monitored (for example, with the use of a fecal egg count reduction test or another appropriate method).

A decrease in a drug's effectiveness over time as calculated by fecal egg count reduction tests may indicate the development of resistance to the dewormer administered. Your parasite management plan should be adjusted accordingly based on regular monitoring.

Macrocyclic lactones provide prolonged drug exposure that may increase selection pressure for resistant parasites. This effect may be more pronounced in extended-release formulations.

TARGET ANIMAL SAFETY

Clinical studies have demonstrated the wide margin of safety of LONGRANGE® (eprinomectin). Overdosing at 3 to 5 times the recommended dose resulted in a statistically significant reduction in average weight gain when compared to the group treated at label dose. Treatment-related lesions observed in most cattle administered the product included swelling, hyperemia, or necrosis in the subcutaneous tissue of the skin. The administration of LONGRANGE at 3 times the recommended therapeutic dose had no adverse reproductive effects on beef cows at all stages of breeding or pregnancy or on their calves.

Not for use in bulls, as reproductive safety testing has not been conducted in males intended for breeding or actively breeding. Not for use in calves less than 3 months of age because safety testing has not been conducted in calves less than 3 months of age.

STORAGE

Store at 77° F (25° C) with excursions between 59° and 86° F (15° and 30° C). Protect from light.

Approved by FDA under NADA # 141-327

Made in Canada.

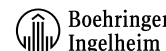
Manufactured for Boehringer Ingelheim Animal Health USA Inc., Duluth, GA 30096

*The Cattle Head Logo and "LONGRANGE" are registered trademarks of

Boehringer Ingelheim Animal Health USA Inc.

© 2019 Boehringer Ingelheim Animal Health USA Inc. All rights reserved.

1050-2889-08, Rev. 01/2019, BLON161E US-B0V-0597-2021A





OUTLAST. OUTPERFORM.

OUTDO

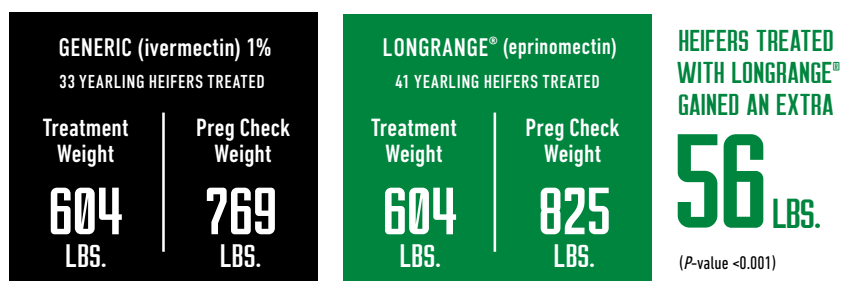


CONTROLLING PARASITES FOR UP TO 150 DAYS RESULTED IN GREATER WEIGHT GAIN AND MORE CALVES BORN EARLIER.¹

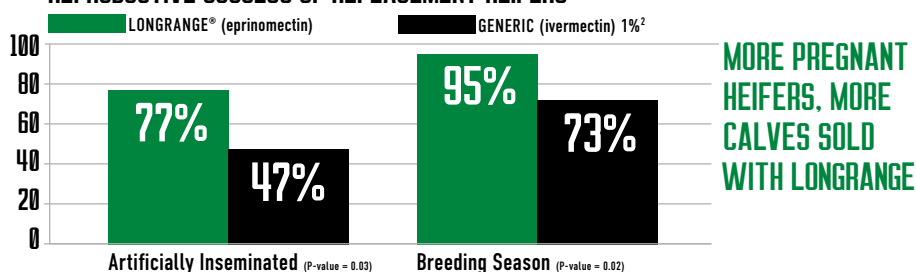
There's more to LongRange® (eprinomectin) dewormer than just putting on pounds. Pregnancy rates increased and calving intervals shortened — meaning more calves are born earlier, giving them all more time to gain. That's because LONGRANGE doesn't just get the job done, it gets it outdone. And we've got the studies to prove it.

INSISTING ON THE BEST MAKES EVERY REPLACEMENT HEIFER A HIGHER-YIELD INVESTMENT.

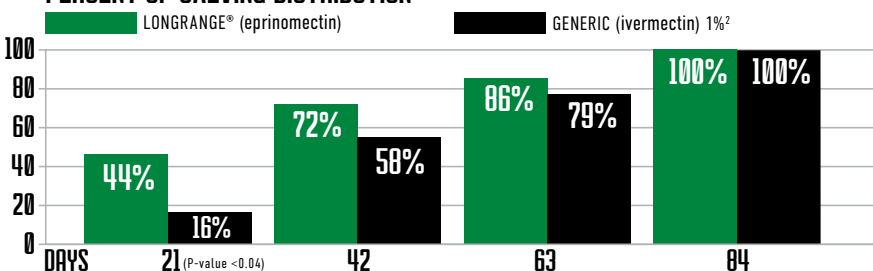
TOTAL WEIGHT GAIN OVER 233 DAYS ON PASTURE¹



REPRODUCTIVE SUCCESS OF REPLACEMENT HEIFERS¹



PERCENT OF CALVING DISTRIBUTION²



- Calves born early in the calving season are often healthier than calves born late in the calving season due to less pathogen accumulation and exposure.
- Heifers that calve earlier have more time to recover from calving and a greater opportunity to rebreed.
- Heifers that calve earlier in the calving season have lower chance of being nonpregnant at the end of the breeding season.

LONGRANGE IMPORTANT SAFETY INFORMATION: Do not treat within 48 days of slaughter. Not for use in female dairy cattle 20 months of age or older, including dry dairy cows, or in veal calves. Post-injection site damage (e.g., granulomas, necrosis) can occur. These reactions have disappeared without treatment. Not for use in breeding bulls, or in calves less than 3 months of age. Not for use in cattle managed in feedlots or under intensive rotational grazing.

¹Andresen CE, Loy DD, Brick TA, Gunn PJ. Case study: Effects of extended-release eprinomectin on cow-calf performance and reproductive success in a fall-calving beef herd. Prof Anim Sci 2018; 34(2):223-229. <https://doi.org/10.15232/pas.2017-01690>.

²Cydectin 1% Injectable, Dectomax 1% Injectable and Generic Ivermectin 1% Injectable product labels.

LONGRANGE®, THERAPHASE® and The Cattle Head Logo® are registered trademarks of Boehringer Ingelheim Animal Health USA Inc. All other marks are property of their respective owner.
©2022 Boehringer Ingelheim Animal Health USA Inc., Duluth, GA. All Rights Reserved. US-801-0663-2021-V2

CALCULATE
THE RETURN
FOR YOUR
OWN HERD.



Use the LONGRANGE
Investment Calculator
to calculate what you
could gain with us.

Tigerstripes - Black Brahman - UltraBlack

BELL CATTLE COMPANY

Gainesville, TX
940-736-5502



1 10 Tigerstripes Pairs

Calves at side by Angus Bulls

Bell Cattle Company has been known for years for the quality cattle that they bring to Fort Worth, San Antonio, and Houston, having the Champions many times at each of these shows, as well as many other replacement sales throughout Texas and Oklahoma. Bell brings that high end quality once again with a fancy set of big bodied, stout made females with excellent udders. The Angus sired calves at side are smooth and good.

SANDERS & SONS

Clifton, TX
254-386-6411



7 12 Heavy Bred Tigerstripe Heifers

Pasture Exposed to Joe Dean Calving Ease Angus Bulls 6/10 - 9/10/22

8 12 Heavy Bred Tigerstripe Heifers

Pasture Exposed to Joe Dean Calving Ease Angus Bulls 6/10 - 9/10/22

Sanders and Sons has been farming and ranching in Bosque County, TX for many generations, and they are dedicated to providing their customers with only the top quality. Weather it is their top-notch Farm services or a high end set of replacement females like the ones they are presenting here, Sanders and Sons take pride in their product. These two sets of F1 Tigerstripe heifers are a big, long-bodied set that are starting to show a nice and uniform set of udders. The calves that are on the way will be sired by a proven Calving Ease Bull from Joe Dean Angus.

S & W CATTLE COMPANY

Nevada, TX
214-512-2413



2 10 Heavy Bred Tigerstripe Heifers

Safe in calf to Calving Ease Angus Bulls

3 10 Heavy Bred Tigerstripe Heifers

Safe in calf to Calving Ease Angus Bulls

S and W Cattle Co. has been involved in the Fort Worth sale for several years now, and they are known for bringing the Ranchers kind, durably built, with longevity with great bone and feet. Once calved you will be impressed with the beautiful udders and exceptional milk flow to raise the 44 Farms Angus sired calves that will have extra performance and lbs at weaning.

JM CATTLE COMPANY

Gause, TX
979-574-7914



9 10 Brangus X F1 Braford Pairs

3-4-month-old calves at side by Irish Angus Bulls

This group of females are the solid black mates to the same great Cattle that JM brings each year. These incredible females are out of F1 Braford Cows and Sired by Brangus Bulls. These are the calf raising kind. They are the perfect size with a big foot and bone structure, huge ribbed with a big top. They have a very nice udder structure with the right teat set. The calves at side are sired by true Irish influence Angus bulls, and they are stout and soggy and will mash the scales down at weaning. This is the right package for the serious Rancher.

4F CATTLE COMPANY

Whitesboro, TX
903-718-0788



4 12 Heavy Bred Tigerstripe Heifers

Safe in Calf to Calving Ease Angus and Hereford Bulls.

Tad and Kim Ferguson have bringing high quality, uniform replacement females to Fort Worth for several years and this group is large framed with big rib and capacity. They are strong over the top and have a wide pin set. You will start getting Hereford and Angus sired calves right after the sale.

PAYNE RANCH

Telephone, TX
903-227-2094



10 10 Ranch Raised Angus Plus Pairs

30 Day old AI sired Calves Red/Black Angus Bull

These heifers are out of Black-Red Angus bulls from RA Brown Ranch and out of the Payne Ranch core cow herd that has thrived in Telephone Texas for years. The Payne Family raises very practical cattle that will adapt to any environment. They are efficient, sound, fertile and offer cattlemen proven, problem free maintenance and longevity to raise top end calves year after year. These are always very popular in Fort Worth. The calves at side are sired by a Black/Red Angus Bull heavy in RA Brown Genetics, and they will be high growth and heavy at weaning this Fall. Heifers are very gentle, will follow feed truck, ATV, or moved by horseback.

JCW CATTLE COMPANY

Crockett, TX
936-204-4244



5 10 Heavy Bred Tigerstripe Heifers

8 plus months safe in calf to 44 Farms Angus Bulls

These heifers have a deep dark cherry red color with a good stripe pattern and a very traditional look. They are a good size and have big tops and a nice bold rib shape. Very maternal with nice udders. They are springing heavy with 44 Farms Angus Sired calves in them, with some on the ground now. This is the first time to Fort Worth for JCW, but look for them to be big time successful with these.

LAVISTA RANCH

Gatesville, TX
254-216-9505



6 12 Heavy Bred Tigerstripe Heifers

8 plus months safe in calf to a calving Ease Angus Bull

This is a nice set of ranch raised females that were sorted out of 50 of LaVistas top replacements. They are very uniform and in perfect condition with a beautiful color. They are heavy bred and will have some calves on them at the time of the sale. The calves are sired by a bull LaVista has used on heifers due to the easy calving, yet quick growth and excellent make up.

CHISHOLM TRAIL RANCH

Rhome, TX
817-308-4818



11 10 Ultrablack Pairs

2-3-month-old calves at side by Joe Dean Angus Bulls

New consignor, Chisholm trail Ranch, is coming with a real ranch set of pairs. They are long bodied with smooth tops and a good structure. They have great two-year-old udders and they are giving it all to their calves. Raised on big country just up the road in Rhome, they have just enough ear to make them very adaptable. The calves on these females will pay the ticket.

Brangus - Superbaldie - Angus

CIRCLE T RANCH/HILLWOOD

Fort Worth, TX
817-454-3165



12 12 Heavy Bred Brangus Heifers

Bred to Cavender Ranch Brangus Bulls 5/15/22- 8/5/22

Hillwood land and Cattle has been a long-time supporter of the Fort Worth Stock Show and many time Champion in this Sale. This powerful set of females come from a long background of using the top genetics in the Brangus Breed. This will be the third generation of Genetrust genetics out of our base cow herd that is primarily made up of Steiner Ranch Cattle. These heifers are always very sound and functional with good mothering ability. They have size and plenty of volume. These are the right kind of Brangus and will make an excellent addition to any Ranch.

HODDE LAND AND CATTLE

Brenham, TX
979-277-5082



17 10 Superbaldie Pairs

45-60-day old calves by 44 Farms Angus Bulls

Hodde Land and Cattle is coming with an outstanding set of Superbaldie Pairs. These females are moderate framed and have a powerful shape of muscle with lots of rib and volume. With all this power they still maintain a feminine look to their front with nice angular shoulders, and they have nice, tight udders with perfect teat shape. The 44 Farms Angus sired calves at side are the proof of the maternal ability of these proud mamas.

BAR W CATTLE COMPANY

Whitney, TX
254-707-0083



13 12 Spring Calving Brangus Heifers

Bred to Calving Ease Brangus Bulls 7/1/22-9/15/22

These heifers are sorted out of 50 of Bar W's top, home raised "Keeper" Replacements. The herd is based in Steiner Ranch Genetics on both the top and bottom sides of the pedigree and include several sons and grandsons of Exacto, Impression and Excel. If you like the durable, rancher type Brangus with extra length of body and a solid functional structure, you will want to find these heifers from Bar W. They will begin calving April 1 to a proven calving ease, Bar W Brangus Bull.

JCW CATTLE COMPANY

Crockett, TX
936-204-4244



18 10 Superbaldie Pairs

4-month-old calves by Cavender Ranch Brangus Bulls

The Superbaldie division of this Show and Sale has always been one of our strongest divisions, and this year is no exception! New consignor, JCW, will fit right in with this set. Big footed, long bodied and solid udders full of milk are what this set brings with them. The color pattern will set them apart and make them the front pasture kind. The Cavender Ranch Brangus sired calves at side are coming along really well, and are sure to mash the scale down early this spring. These are the kind you look for when you come to Fort Worth.

RAFTER B CATTLE COMPANY

Era, TX
940-902-4009



14 10 Heavy Bred Brangus Heifers

7-8 months safe in calf to a Low-Birth-Weight Angus Bull

This is a really nice set of calf raisers. They are good sized heifers with extra length and frame. They are sound and big footed with a great structure, a solid thick top and a bold sprung rib shape. They are heavy in calf to a low-birth-weight Angus Bull and are starting to show a perfect udder shape.

MK RANCH

Era, TX
940-736-5502 - 940-768-2773

MK RANCH

19 10 Heavy Bred Superbaldie Heifers

7-8 months safe in calf to Low-Birth-Weight Angus Bulls

20 10 Heavy Bred Superbaldie Heifers

7-8 months safe in calf to Low-Birth-Weight Angus Bulls

Long time consignor to Fort Worth, MK Ranch from Era, TX has once again sorted you two outstanding pens of Superbaldie Females. These heifers have rock solid genetics and years of breeding behind them. Always Eye-Appealing, the females from MK this year have a great look with a strong top that is long and level over the hips with a wide pin set. You will love the color on the faces of these with plenty of pigment on the eyes. Our repeat customers come for heifers like these.

SANDERS & SONS

Clifton, TX
254-386-6411



15 12 Heavy Bred Brangus Heifers

Pasture Exposed to Joe Dean Calving Ease Angus Bulls 6/10 - 9/10/22

Here are the Brangus females from the family operation of Sanders and Sons. They raise high quality, durable replacement females, and these big-bodied, rugged heifers will be easy calving, and low maintenance and have plenty of milk to raise the Joe Dean Angus Sired calves that will be on the way right after the sale.

LAVISTA RANCH

Gatesville, TX
254-216-9505



21 12 Heavy Bred Superbaldie Heifers

8 plus months safe in calf to a calving ease Angus Bull

This is the Superbaldie heifers sorted out of 100 Brangus and Brangus Baldie replacements. Deep and stout with good looking udders. They fit right in with our outstanding set of Brangus and Brangus Baldies this year. They are heavy bred and will have some calves on them at the time of the sale. The calves are sired by a bull LaVista has used on heifers due to the easy calving, yet quick growth and excellent make up.

LAVISTA RANCH

Gatesville, TX
254-216-9505



16 12 Heavy Bred Brangus Heifers

8 plus months safe in calf to a calving ease Angus Bull

Here is a very traditional set of Brangus heifers sorted out of 100 Brangus and Brangus Baldie replacements. Long bodied and stylish with a good foot and bone structure. They are heavy bred and will have some calves on them at the time of the sale. The calves are sired by a bull LaVista has used on heifers due to the easy calving, yet quick growth and excellent make up.

44 FARMS LLC

Cameron, TX
405-880-3866



22 10 Angus Pairs

September and October calves at side by 44 Hayday 008, Myers Fair N Square, Hoffman Thedford, and 44 Enhance 9445. AI'd on 12-08-2022 to 44 Good News 1130, GB Fireball, Poss Winchester and other prominent Angus AI Sires, then exposed 44 Farms Herd Bulls.

These Elite Angus females are sired by the some of the breeds most sought after genetics. With beautiful udders, these moderate maturing heavy milking females with September and October calves at side by 44 Hayday 008, Myers Fair N Square, Hoffman Thedford, and 44 Enhance 9445, these cows would work as a great starter herd or will spice up any fall calving program! AI'd on 12-08-2022 to 44 Good News 1130, GB Fireball, Poss Winchester and other prominent Angus AI Sires, then exposed 44 Farms Herd Bulls, these females were bred to keep in the program. Possible 3N1's

BEAR CREEK FARM

Leonard, TX
214-415-1857



23 10 Angus Pairs

*October/November AI Calves at side
AI Bred 12/26/22 to BCF Jet Stream 827*

Bear Creek Farms is bringing a very uniform group of Black Angus first calf pairs. The Bear Creek cattle are Stout made, big boned, big volume and flawless udders. They will all have AI sired calves at side by the most sought-after AI sires in the Angus breed. Heifers have been AI bred to BCF Jet Stream 827 (AAA 19253598), who is with ABS, and pasture exposed to BCF Monumental 917 (AAA 19443171) for possible 3-n-1's. Calves have not been castrated as bulls are registerable, and all calves in this group are eligible for the Bear Creek buyback program. Contact a member of Bear Creek Farms if you are interested in the buyback program.

DENNY CATTLE COMPANY

Lubbock, TX
806-773-6061 - 806-789-7713



29 12 Heavy Bred Angus Heifers

8 months safe in calf to ET Brothers sired by Klooney

New consignors Don and Wendy Denny are loaded for their first trip to Fort Worth. These heifers are designed very well, big bodied and huge rib with an extra wide pin set. They have a thick wide muscle pattern over the top that carries down into an expressive and impressive rear quarter. Even with all this power from the shoulder back, they maintain an angular, long front end to give them added eye-appeal. They are heavy bred to two flush mate ET Brothers sired by the \$80,000 Millah Murry Klooney K42, that exhibits exceptional calving ease traits, as well as milk. A maternal brother to these is with ABS in the UK and is a chart topper for carcass traits.

ICE CATTLE COMPANY

Lindsey, TX
940-727-9611



24 10 Angus Pairs

75-day-old calves sired by Angus Bulls

Ice Cattle Co always brings some of the most functional cattle in the English Division. These heifers are sound with outstanding udders. They are very feminine through the front end, and the nice tight udders make them very maternal. The calves at side are coming along very well, and will be a nice coupon when you wean them this fall.

TWO IGO CATTLE

Plainview, TX
806-774-8535 - 806-494-1370



30 10 Heavy Bred Angus Heifers

*AI Bred to RAB 100 Proof on 5/6/2022
PE 6/1/22 to 8/1/22 to 44 Farms Stallion son*

Raised on our farm outside of Plainview, TX these heifers are heavy in 44 farms Angus Genetics. These heifers are the mates to 2020's Reserve Grand Overall Pen, and every year are some of the most popular in the barn. They are stout made with huge bone and feet, as well as a giant spring of rib. Optimum sized with a solid muscle pattern and a perfect structure. We have been keeping data on this herds performance at harvest and 88% of the calves have graded choice and 6% have graded prime. Safe in calf to proven calving ease bulls RAB 100 Proof or a son of EXAR Stallion from 44 Farms.

FM RANCH SERIES

Archer City, TX
214-534-2520 - 940-631-4560



25 10 Heavy Bred Angus Heifers

8 plus months safe in calf to SAV Angus Bulls

26 10 Heavy Bred Angus Heifers

8 plus months safe in calf to SAV Angus Bulls

FM Ranch Series cattle are based in genetics from Angus leader Schaff's Angus Valley, Anthony, ND. These are performance bred cattle that focus on carcass data. They are a moderate framed set of heifers that are very deep bodied with outstanding rib shape and plenty of volume and capacity. There will be some calves on these by sale day. These are the right kind for today's modern Rancher.

27 10 Fall Calving Angus Heifers

2-3 months safe in calf to SAV President son and SAV Raindance son

Sired by SAV Resource, SAV Recharge and SAV Renown, these heifers are solidly based in Schaff's Angus Valley genetics that is focused on performance and carcass genetics. These heifers will be 28 months of age when they calve, making them more mature and allowing for extra growth and development. They are all 2-3 months safe in calf to a SAV President son and a SAV Raindance son.

ROCKIN' G CATTLE COMPANY

Bokchito, OK
903-449-0488



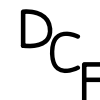
31 10 Heavy Bred Angus Heifers

*AI Bred 3/25/22 to Coleman Renown 0372
PE 4/1/22-6/30/22 to Coleman Renown 0372*

Rockin' G has sorted another big and powerful set of females from their replacements to offer in Fort Worth. These young cows are big footed and stand on a heavy substance of bone, and this works into a huge ribcage that is covered with muscle. These are bred to be maternal, and they are developing nice udders that are full of milk. Most of these females will be calved before the sale to Coleman Renown 0372 for big growthy calves at weaning.

DOUBLE CREEK

Meridian, TX
254-749-3253



32 12 Heavy Bred Angus Heifers

8 plus months safe in calf to Calving Ease, Double Creek Farms Angus Bulls

Double Creek Farms has been breeding Angus Cattle in Bosque County for several years and this set of females comes right from the top of their replacements. These heifers are a deep sided set that is bred for reproduction and longevity. There will be some calves on the ground by Sale Day, and they will finish calving by early March.

44 FARMS LLC

Cameron, TX
405-880-3866



28 10 Heavy Bred Angus Heifers

Due to calve Feb 1 thru Mar 4 to 44 Phenom, DB Iconic, and other breed leading 44 Farms herdsires

Super nice set of Heavy Bred Angus Heifers here. Due to calve Feb 1 thru Mar 4 to 44 Phenom, DB Iconic, and other breed leading 44 Farms herdsires, these females are bred tight and will make the Front Pasture Kind. Sired by some of the best bulls in the 44 Sire lineup, these females are square hipped, big middled and have the front end that will make a really nice set of young cows. There will be calves on the ground by sale day. Don't miss an opportunity here!

RICHBURG ANGUS

Amarillo, TX
806-570-0406



33 10 Heavy Bred Angus Heifers

7-8 plus months safe to Richburg Registered Angus Bulls

7-0 Cattle Co - Richburg Angus is a new consignor to The Fort Worth Commercial Heifer Sale, but they are no strangers to bringing high quality Angus Cattle to many Sale Rings around Texas, and they always present the stouter made cattle with lots of power and muscle. The heifers they are bringing to us were raised right up the road in Bowie, TX. They are the ideal size to be efficient in this environment. Phenotypically, these females are long bodied, straight lined and strong topped, with huge bellies full of calf. This will be one of the most uniform pens in the Barn this year. Pasture Exposed 5/10/22 to 7/15/22 to sons of Saugahatchee, Lutton, Argentine and 4 Star Patton. This opportunity is what makes Fort Worth special.

Angus - Red Angus - Red and Black Baldie - Charolais

SIDWELL HAY & CATTLE

Carpenter, WY
970-381-4701

US

34 12 Heavy Bred Angus Heifers

AI Bred 6/9/22 to 6/16/22 to Turning Point, Stevenson Angus Calving Ease Bull

If you have not been to the Fort Worth Commercial Heifer Sale in a few years, you need to plan to come see these Sidwell Cattle that come from Wyoming. These are thick and wide and to borrow a friend's terminology, they are belly draggers. They are big bodied, with muscle and flesh. Very eye-appealing females with a solid structure and a good flex off both ends when they are on the move. They are all AI Bred to Turning Point, a Stevenson Angus Calving Ease Bull that the Sidwells have used for three years for the calving ease, however, the calves grow fast and have a good look when Mature. You will want to keep the heifer calves produced here as the Turning Point Females are making great cows.

DAUER HEREFORDS

Panhandle, TX
806-683-7073

7

39 10 Black Baldie Spring Calvers

AI Bred 5/1/22 to Sitz Essential 731J

PE 5/21/22 to 7/27/22 Angus calving ease Bulls from Potters Emmett Valley Ranch

The Dauer heifers have consistently been some of the more popular heifers in the barn by both buyers and consignors. They are a slick set of beautiful, feminine fronted heifers with the right amount of chrome and pigment on their faces. This turns into a perfect shoulder to neck junction, and a big bold sprung ribcage behind the shoulder. Long and level over the hip and into the loin. They are structurally correct enough to stand any environment. They have been AI bred to a Sitz Angus bull that ranks in the top 1% of the breed for Birth Weight, and the top 10% of the breed for Yearling Weight and Marbling. Cleaned up with Potter's Angus Valley Low Birth Weight Angus Bulls.

COCONOUGH

Decatur, TX
940-389-4519

GH

35 10 Spring Calving Angus Heifers

4-5 months safe in calf to Joe Dean Angus Bulls

This fancy set of Angus heifers come from Express Ranches Angus genetics; hand selected from our Keeper herd. They will be easy calving bred to our proven low birth weight Joe Dean Angus Bulls. Heifers are bred for Growth and Carcass, with solid feet and legs and a good muscle pattern.

36 10 Spring Calving Angus Heifers

6 plus months safe in calf to proven Calving ease Angus Bulls

Raised in Wise County these heifers come from long time cattle breeders in North Texas, Cocanougher Cattle. Heifers are raised to be ready for turnout and will remain low maintenance through calving. These heifers have improved each year that they have been in Fort Worth, and you can expect their best set yet. Safe in calf to our proven Calving ease bulls that we have used on heifers for several years.

ADAMS FAMILY FARM & RANCH

Justin, TX
817-996-7659

P

40 12 Heavy Bred Red Angus Heifers

7-8 months bred to C Bar One Way 055H

If you are looking for a very uniform set of red Angus females, be sure to find this set that are primarily all one-half sisters sired by Over Draft Pick 413D, who is represented by most all of the semen studs, and has an incredibly balanced data set including a -2.3 BW to a 124 YW spread. This set is springing right along and are showing a sound udder development. These heifers are big footed and have plenty of bone and a complete look with a solid square hip and hind leg, and a perfectly angled shoulder. They are all heavy bred to C Bar One Way 055H (ARAA 4534299) that has a -2.5 Birth Weight EPD and a calving ease number of 12 along with a 114 Yearling Weight EPD.

AMIGO INVESTORS, LLC

Decatur, TX
940-389-4519

A7

37 10 Spring Calving Angus Heifers

4-5 months safe in calf to proven calving ease Angus Bulls

Sorted from a select set of our partnership cattle, this set of heifers were chosen to represent our goals of sound, fertile, problem free cattle. Heifers will be a few months older when they calve for added size and a more efficient breed back. Safe in calf to our proven "heifer Bulls."

GIBSON CATTLE

Haskell, TX
940-256-1422

G

41 10 Heavy Bred Red Baldie Heifers

AI Bred 6/1/22 to GMM Stockmarket J5633 (ARAA 4683315)

PE 6/1/22 to 9/1/22 to GMM Stockmarket J5633

This set of heifers is sired by RA Brown Red Angus Bulls and out of Red Angus X Hereford Cows, and they will have the Red Angus Certified tag. This is a uniform set of heifers that exhibit a nice frame size with a solid structure and good feet and legs. They are 6.5 to 8 months safe in calf to Red Angus bull GMM Stockmarket J5633, a true calving ease bull with a -4.5 Birth Weight EPD, but still has a growthy 119 Yearling EPD, and ranks in they top 1% of the breed for Marbling. Good looking set of heifers with outstanding genetics. Gentle, Siren and Hot Wire Broke.

MC CATTLE CO.

Archer City, TX
940-631-2005

MC

38 10 Black Baldie Pairs

3-month-old Calves by PAR 9014 Design 5651

MC Ranch is coming to Fort Worth for their first time with a set of hard-working Ranch two-year-olds. These are Mot Faced heifers with a good amount of color and pigment. They are nice, long bodied cows with superb udders, and when you see the calves, you will know they are full of milk. The calves at side came end of October and first of November. They are sired by a Parker Ranch Angus Bull (036 grandson) and will be extra heavy at weaning time. This group is the perfect representative of what we want from first time consignors, a set of solid young cows that are giving all they have to their calves. They are super gentle and will come to a sire. Do not overlook this set of Rancher heifers!

ACES WILD RANCH

Milsap, TX
817-600-1082



42 12 Heavy Bred, Purebred Charolais Heifers

AI Bred 4/26/22 to Tioga, Remington and Ransom

PE 5/15/22 to 7/1/22 to Tioga, Stikeri 8124, Affinity 0896 and Landmark 5052

Acres Wild Ranch is a new consignor to the Fort Worth Commercial Heifer Sale, but not new to the Charolais business or the Livestock Industry. This set of heifers is sired by: LT Patriot 4004, SCX Triumph 50B, LY Authority 7229, SAT Boomtown 8303, HBR Profit 137, LT Ransom 8644, LT Tioga 4090 and LT Fargo 546, and the genetics are primarily from the Lindskov Charolais herd, Isabel, SD. This is a functional and uniform set of females that are moderate framed, with a soft look that will be admired by cattlemen that appreciate efficiency and design. Set to start calving 2/3/23 to top Charolais Sires.

Charolais Cross - Simmental - Club Calf Hybrids

SIDWELL HAY & CATTLE

Carpenter, WY
970-381-4701

US

43 12 Purebred Charolais Heavy Bred Heifers

AI Bred 5/30/22 to 6/1/22 to Kingsman (PB Char) and Redemption (Red Angus)

These are sisters to the Purebred Charolais that we have brought to Fort Worth the past several years. They are safe in calf to mostly Kingsman, A purebred Charolais Bull that has excellent numbers for calving ease and growth. He is a good looking, long and big muscled bull that is very structurally correct. A few of these will be bred to Red Angus Bull Redemption, a calving ease Red Angus Bull that maintains plenty of growth and look. With optimum size and shape, this group will be an outstanding addition to any Charolais operation.

44 12 Heavy Bred Char Cross "Peach Colored" Heifers

AI bred 5/30/22 to 6/1/22 to Redemption (RAB and JYJ Red Angus)

These are the sisters to last year's Champion Overall pen, as well as the Reserve Overall pen in 2021. This set are the "Peaches" from Sidwell Char Cross with the Red gene. These females are the perfect size and balance. Extra wide at the hip and over the top, massive rib and structure, yet very feminine and wedge shaped through the front end. The Redemption calves that they are carrying will be easy calving, but still very eye-appealing and stout when mature. The heifer calves produced here should be competitive in the ORB shows around Texas.

45 12 Heavy Bred "Silver" Char Cross Heifers

AI bred 5/30/22 to 6/1/22 to Redemption (RAB and JYJ Red Angus)

These are the Silver mates to the heifers above that have been very successful over the years at Fort Worth. We have had several reports from buyers about what nice cows these are making. Keep the females produced here with the mating to Redemption for extra milk and growth with lots of look.

46 10 SimAngus X Maine Heavy Bred Heifers

AI Bred 5/30/22 to 6/1/22 to Turning Point, Stevenson Angus Calving Ease Bull

This pen of SimAngus X Maine heifers is sired by a pair of Simmental Bulls that we raised sired by Hi-Grade and out of Maine-Angus cows. The mothers of these heifers are Angus and Angus Cross, giving you a set of five-eighths Angus X three eighths Sim-Maine. They are moderate sized, and stout made. They will work well as club calf producers or with Simmental Bulls. They are all AI Bred to Turning Point, a Stevenson Angus Calving Ease Bull that the Sidwells have used for three years for the calving ease, however, the calves grow fast and have a good look when mature. You will want to keep the heifer calves produced here as the Turning Point Females are making great cows.

SIMMENTALS OF TEXAS

Granbury, TX
817-894-0563

Simmentals of
TEXAS

47 12 Simmental X Pairs

Calves by JL Maximum Confidence

48 10 Simmental X Heavy Bred Heifers

AI bred 3/23/22 to 5/26/22 to BRJS 327W and JL Maximum Confidence (SimAngus)
PE 4/6/22 to 5/31/22 to Purebred Simmental S-3 HP H622 (ASA 3908601)

Both sets of these heifers were bred and raised in the Simmentals of Texas Program in Granbury Texas and are Fleckvieh based. There is a long history of high end genetics centered around Simmentals of Texas, focusing on the Commercial Cattleman who is interested in adding growth, performance, milk, bone and carcass, and these heifers are a true representation of what they are looking for. They are Big middledd with a very soft and maternal look. They are very solid footed and exhibit a rugged structure that is built for longevity. All heifers are either one-half blood SimAngus (1/2 Simmental X 1/2 Angus) or Purebred Simmental. You will love the production that you will get from these for years to come.

GRISWOLD CATTLE, LLC

Stillwater, Ok
405-780-3300

G-

49 10 Simmental X Heavy Bred Heifers

8+ months safe in calf to GCC Angus Bulls (Gold Standard and Legacy sons)

Griswold Cattle is known through the Livestock industry for producing high-quality, eye-appealing cattle that produce. Over time they have developed and maintained one of the top Herd Sire batteries in the Nation including Broker, Shocker, SAM (Something About Mary), Whizard, Loaded Up, County-O, Steel Force and many more. This pen of heavy bred heifers will represent these herd sires, and will not disappoint, as the Griswold's always keep a great pen for Fort Worth. They are deep bodied, wedgy fronted with perfect structures. Safe in calf to Gold Standard and Legacy sons for easy calving and look when mature.

HALE CATTLE COMPANY

Miami, TX
806-898-3345

H

50 10 Hereford Hybrid Early Fall Calving Heifers

PE 10/20/22 to 12/31/22 to Calving Ease Black Bulls (Corriente)

51 10 Hereford Hybrid Early Fall Calving Heifers

PE 10/20/22 to 12/31/22 to Calving Ease Black Bulls (Corriente)

Mates to these heifers have produced Hereford Champion Steers over the entire state of Texas including both the Champion and Reserve Horned Hereford and the Champion and Reserve Polled Hereford Steers right here in Fort Worth. They were the top selling pen in this sale in 2019. They have the right genetics and the right look to do it for you as well. Moderate framed, big-backed and super stout rear quarters along with the chiseled front you need to produce the Champions. Safe in calf for summer and fall calves to calving ease black bulls.

*Well over 20 years of experience,
testing, and customer feedback
guarantees you the best possible
knife for everyday life on the
ranch or out in the woods.
Each knife is handmade from the
highest quality materials available
today, and is warranted for life.
Well known for their edge-holding
properties and durability, T-Bones
knives are second to none.
Don't be fooled by cheap knockoffs,
buy the original. Buy the best!
Tools for the Working Cowboy
TBONESCUSTOMCREATIONS.COM
TBONE7S99@YAHOO.COM
903-640-6484*





Nutrition Plus is an American owned and operated company that provides a full line of quality livestock minerals and other nutrition supplements. We are dedicated to providing our customers with the best products and services in the industry, offering the best nutrition for your cattle (cow/calf, stocker, feedlot), horses, sheep and goats. "Branded For Quality" is not just a phrase but a philosophy of commitment in all that we do.

TEXOMA BRANDED MINERALS *can be custom formulated for your ranch and conditions*

In today's competitive cattle market, nutrition can positively influence health and growth of calves and can mean the difference between profit and loss. Give your cattle a leg up on the competition with any of a variety of quality Texoma supplement products:

- All Texoma-branded minerals are formulated specifically for Texas conditions, including enhanced iodine levels.
- *Stocker Minerals*
Helps improve rate of weight gain and feed efficiency allowing calves to make the most out of available forages.
- Wide variety of products available including medicated and custom minerals.



Proud Sponsor of the Fort Worth Invitational Commercial Heifer Sale for 25 years

20 pens in this years sale use Nutrition Plus Mineral.

Harry Hudgins and Dee Church will be on site on Friday, February 3, and Saturday, February 4, to discuss your mineral needs.

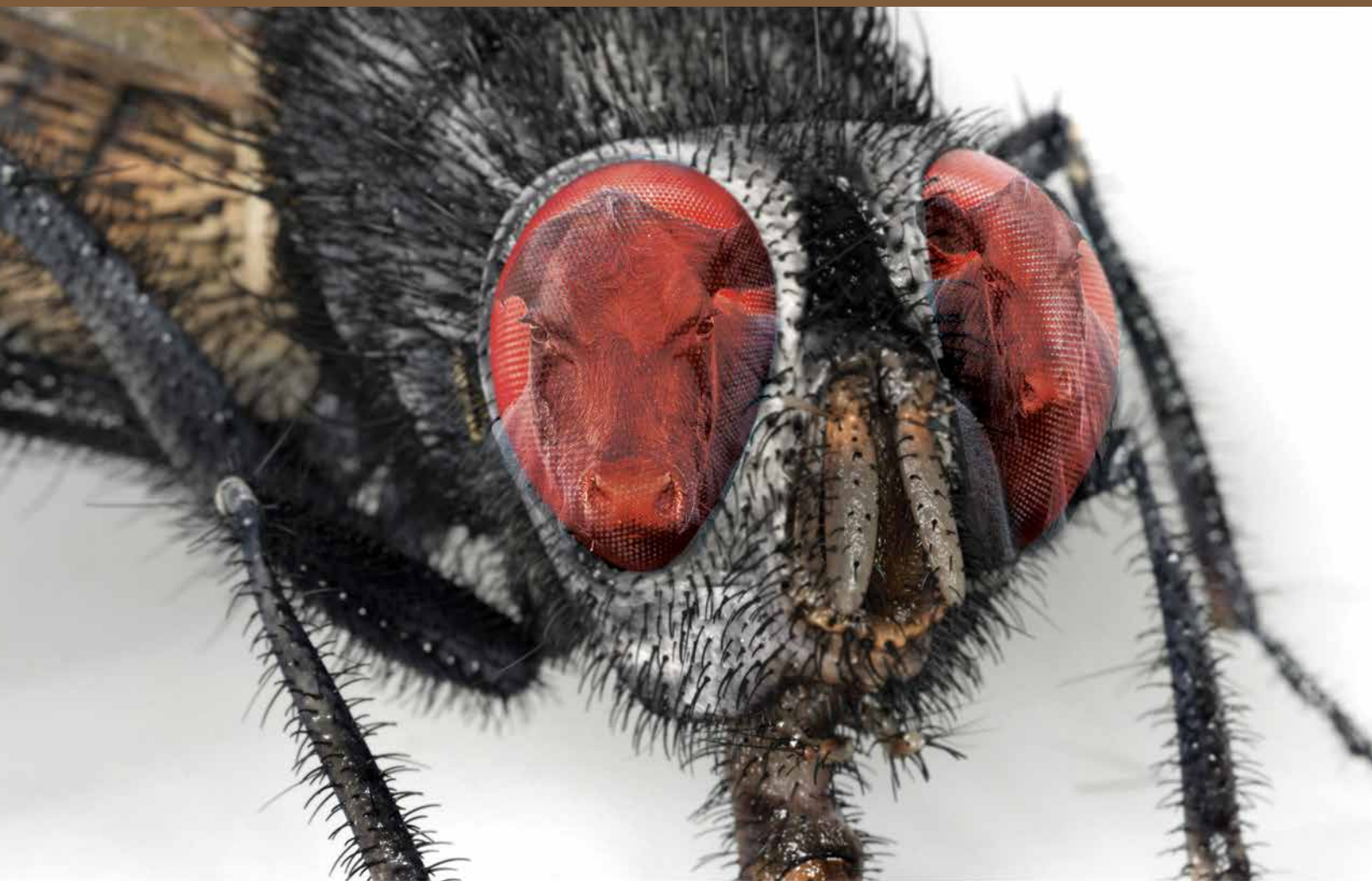
For proven mineral performance call:

HARRY HUDGINS
903-821-1490
DEE CHURCH
806-676-4323



**Quality Livestock Mineral
and Supplements**
888-655-7587
www.nutritionplus.biz

WHEN CATTLE
ARE IN THEIR SIGHT,
YOU NEED MORE.



MORE THAN JUST FLY CONTROL PRODUCTS.



Central Life Sciences is more than just fly control.
More support. More expertise. More species.

To learn more about the Central Life Sciences line of fly control products,
visit AltosidIGR.com, CentralFlyControl.com or Starbarproducts.com

Central Life Sciences is proud to sponsor the 2023 Fort Worth
Stock Show Commercial Heifer Sale



Always read and follow label directions. Altosid and the cow head design are
registered trademarks of Wellmark International. ©2023 Wellmark International.



Fort Worth's
Finest Butcher Shop

WWW.THEMEATBOARD.COM

The New Generation of Cattle Minerals



TRACER
MINERALS

It's not just about Zinc anymore

**Our research on trace mineral interactions
extend beyond this single mineral to enhance
animal health and welfare**

www.tracerminerals.com

(620) 865-2041



How SMART is your pasture?

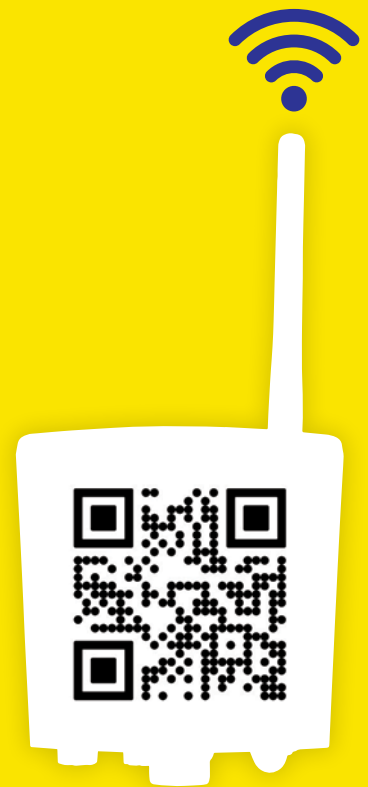
Smart Pasture innovations from Tru-Test™
work together to provide cloud-based solutions that help
you make better decisions to manage your pastures.

Smart Pasture innovations we offer:

- Fence monitoring for permanent and temporary fencing
- Walk Over Weigh real-time weigh systems
- Versatile energizers that meet your needs

Take the Tru-Test to find out! ▶▶▶

Receive a Datamars Livestock Beanie Hat.



Learn more: livestock.datamars.com

Tru-Test™
DATAMARS

**Z
TAGS™**
DATAMARS

**T
Temple Tag™**
DATAMARS

Patriot™
DATAMARS

Speedrite™
DATAMARS

njphillips™
DATAMARS

Must be a U.S. resident with a valid mailing address. No purchase necessary. One gift per person. Gift will be sent approximately (30) days after promotion ends. Promotion is valid through March 31, 2023. By opting in, participant grants Datamars Livestock to send future promotional materials. May unsubscribe from promotions at any time. Datamars Livestock is not responsible for any disputes or damages. Datamars does not share or sell information. © 2023 Datamars, Inc. – All rights reserved.


REV 01132023

SCHACHER AUCTION SERVICES

PO Box 33804, Fort Worth, Texas 76162

Pre-Sort
First Class Mail
U.S. Postage
PAID
SlateGroup

Fort Worth STOCK SHOW — COMMERCIAL HEIFER SALE —



SATURDAY, *February 4*, 2023

West Arena, Fort Worth Stock Show - 3:30 PM - Fort Worth, TX