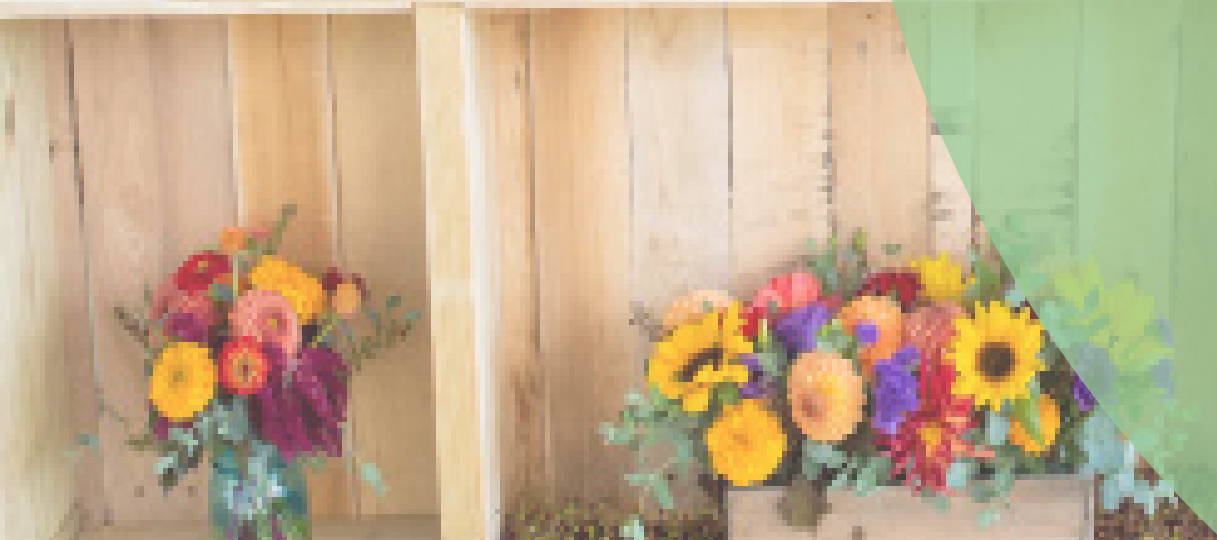




The Baltimore Convention Center

2019 Annual Sustainability Report



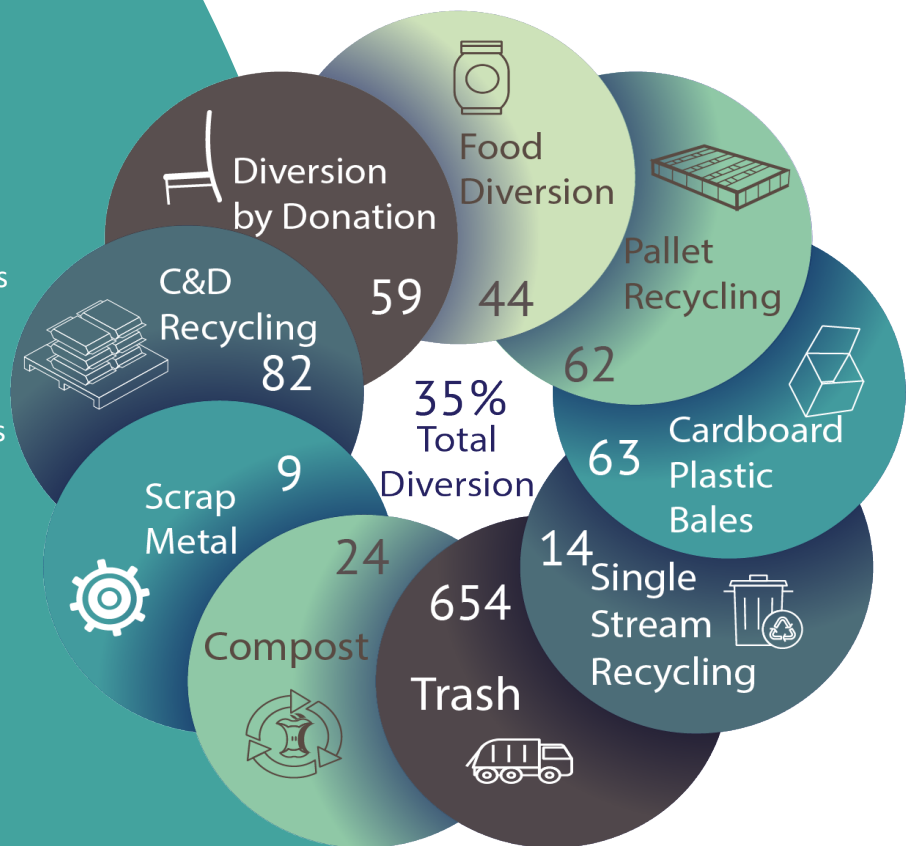
Sustainability 2019

In 2019 The Baltimore Convention Center broadened its reach into the community and industry at large building new partnerships and providing more services to organizations in our community and across the region.

Food Waste Reduction continued to be a theme for the Center's Sustainability Programs. Our partnership with the Maryland Food Bank was expanded as we became the first organization to utilize MealConnect, a simplified food recovery system that gets prepared and unprepared food from the kitchens of hospitality organizations like restaurants and hotels into the hands of not-for-profit organizations that feed people on a daily basis. In 2019 the Baltimore Convention Center through our catering partner, Centerplate donated close to 34 tons of food to the Maryland Food Bank. This is an equivalent of over 56,000 meals.

The Center also partnered up with the Events Industry Council to host their Sustainable Event Professional Certificate Program. This two-day event awarded 71 participants with certificates of participation (see story page 2).

The Diversion By Donation program grew immensely with several new organizations who benefited from the byproducts left behind by conventions. Donations from groups like the National Association of Parks and Recreation and MANTS went to new organizations on our list including The Loading Dock and Morning Star Baptist Church.



2019 Diversion Rate

Partnering in Education

Sustainable Event Professional Certificate

On October 21 - 22, 2019, as a part of our continued commitment to supporting an innovative environmental management system and educating our staff and industry partners, the Baltimore Convention Center, in partnership with the Events Industry Council and our catering partners Centerplate, hosted a two day event, "The Sustainable Event Professional Certificate Program".

Meeting planners from across the region were invited to attend the program in hopes of raising awareness of the important part they play in environmental stewardship. With limited seating available, the event quickly sold out and planners were placed on a wait list in hopes of participating in the event.

Over the course of the two day program topics included: The Science of Sustainability, Designing Accessible Meetings and Events, and Designing Effective Community Service Projects. Director of Operations for Centerplate, Charles Schlagenauf, presented a portion of the training focused on the Center's Food Waste Reduction Program. Several of the new methodologies in the Center's Food Waste Reduction Case Study were presented.

"At the Baltimore Convention Center, we place a tremendous amount of thought and effort go into creating a holistic sustainability program. The response we've garnered from our clients through our programing points to the fact that the impact that events have on a community really matters to them.

Mac Campbell, Deputy Director

On the evening of the program attendees enjoyed a reception that featured a locally sourced, sustainable menu. The event showcased menu items, goods and products sourced by the Center's sustainable program partners including Second Chance, Inc., Carriage House Farms, and Maryland Food Bank

Another important element to the SEPC event was the introduction of the Center's first Environmental Impact

Offset Partner, Blue Oyster Environmental. In partnering with Blue Oyster Environmental, the BCC was introduced to Orchard Point Oyster Co. who provided delicious local oysters for the evening reception.

Calculations were made for the resources needed to grow the food (oysters) served

at the reception. The Center purchased Nitrogen offset credits that went directly back to ensuring that the Chesapeake Bay's oyster growers continue to expand their operations and grow oysters. This is done not only to replenish food source, but as a necessary part of maintaining the health of Maryland's most vital water systems by helping control algae levels that can harm wildlife if left unchecked.

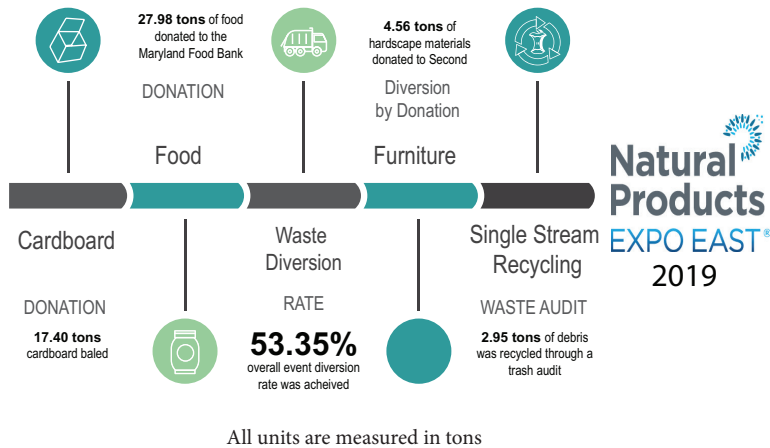


At the end of the two-day event 71 participants achieved their Sustainability Event Professional Certificate. Thirteen members of the Center staff including business partners from Centerplate, Projection, and M.C. Dean Communications were among the professionals receiving certificates.

Meetings in Focus

Farewell to NPEE

Natural Products Sustainability Summary



Last year we said goodbye to a long term client whose show outgrew our footprint Natural Products Expo East (NPEE).

In 2019, the show had an overall diversion percentage of 53.35%. This is the second highest percentage we have had since tracking for the event.

Nearly 56,000 pounds of food was donated to the Maryland Food Bank. The USDA measures the average meal as 1.2 pounds, so this is equal to nearly 46,628 meals donated. Over 9,000 pounds of furniture and other items went to local non-profits Second Chance and the Loading Dock respectfully.

We had an increase of 204% for our overall compost totals. This was mainly due to a robust onsite trash sorting program throughout the duration of the show.

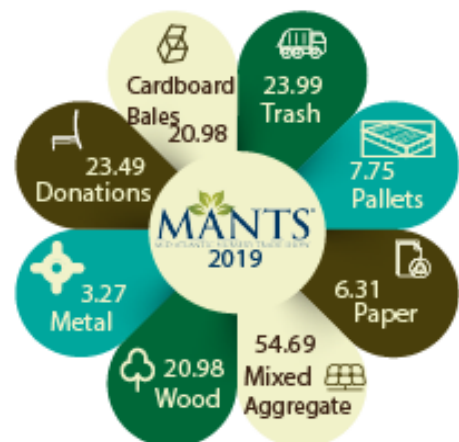
Nearly 750 pounds of food product was donated to our local farm partner, Carriage House Farms. This represents nutritional food for feed servicing their pig farm.

In additional, we had an increase of 120% for the diversion of plastic wrap. We recycled a total of 11 plastic bales. We also recycled a total of 40 bales of cardboard and over 750 pallets.

The Mid-Atlantic Nurserymen's Trade Show (MANTS) 2019

The Mid-Atlantic Nursery Tradeshow has been a mainstay at the Baltimore Convention Center for over 20 years. The relations with this event continues to grow as each year more items utilized for this event find their way back into the surrounding community.

The BCC facilitated the donation of 47 trees (9.67 tons) to forestry, second chance, loading dock, and parks and rec. Other items (pavers, stone, bushes, etc.) donated equaled over 17.72 tons. A total of 23 tons was facilitated by the Center and many more items were donated directly by MANTS.



*2019 Total Diversion Rate 83.25%

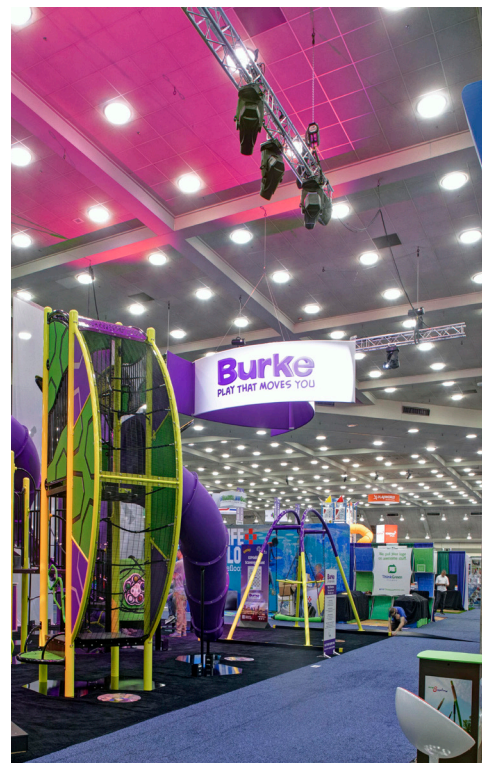
When Baltimore was announced as the location for the 2019 NRPA Annual Conference, NRPA reached out to the Baltimore City Department of Recreation and Parks (BCRP) to determine the best location for the 2019 PBC project. BCRP manages 4,600+ acres of parkland and 262 parks, 170 athletic fields and more than 120

playgrounds. BCRP's renovation plans included a handful of projects to consider for the PBC project and site tours were conducted.

Catherine ABC Park (ABC Park) quickly rose to the top of the list. It had a park renovation plan in place, which would promote health and wellness-related activities and a concept design that integrated conservation interests. It also has a very active community that had been waiting a long time for an investment in the park, which addressed social equity in the area. ABC Park was identified as the perfect location for the 2019 PBC project and the park renovation plan was expedited.

BCRP funded portions of the renovation, like the newly constructed building, as originally planned, but plans were updated to include several items that were donated by exhibitors from the event at the Baltimore Convention Center. The list of items included: a play fountain, basketball posts/backboard/goals, basketball court sealcoat surfacing and playground equipment, were all incorporated in the design. Some of the items donated through the convention were distributed to other parks and playgrounds throughout the City *(excerpted from NRPA.org)*

“Communities Benefit From BCC Events”



NRPA September 24-26, 2019 at the Baltimore Convention Center



Catherine Street Park Grand Opening September 22, 2019