



UPMC EVENTS CENTER

at Robert Morris University

UPMC Events Center

The premier venue in Pittsburgh's Parkway West/Airport Corridor, with corporate and meeting facilities customizable for any size group with catering on site.

Athletic facilities include a main arena floor that can be expanded for practice and a separate practice court. Locker rooms connect to a medical exam room, weight rooms with exercise equipment and a treadmill pool and plunge tub. All three teams have their coaching and staff offices in the Center.

Peoples Court

The Peoples Court is the home of three RMU Colonials NCAA Division I teams – men's and women's basketball and women's volleyball. The arena seats approximately 4,000 for sports or concerts and can be configured to accommodate 100 booths for trade shows and expos. The Eat'n Park Club is a VIP seating section that has a capacity of 125 people.

The LED video display over the court has four main 12' x 5' screens, plus four smaller screens at the corners and a ring display underneath 50' in circumference for scrolling messages and other content. An LED ribbon 2.5' tall circles the arena for 502' on three sides. Twin screens at the far end are over 13' tall and can display speakers or concert performers.

UPMC Health Plan Conference Center

The UPMC Health Plan Conference Center features a 5,500 square foot conference hall that can seat up to 600 or can be reconfigured into five separate rooms. The Center also contains two boardrooms, a buffet area and a reception hall.

FOR UPCOMING EVENTS, VISIT UPMCEVENTSCENTER.COM

By The Numbers

525 tons of steel

18,200 square feet of glass

25,000 cubic yards of dirt excavated for foundation

4,400 gallons of paint

403 maple floor panels for court

4,400 square yards of carpeting – nearly an acre!

3,700 square yards of polished concrete

8 stairways



UPMC Health Plan Conference Center

Room Dimensions & Capacities

Room	Dimensions	Sq. Ft.	Ceiling Height	Banquet 6' Round	Board	Info Fair	Class Room	Reception	Theatre
Individual Rooms									
Board Room 1	15 x 30	450	9'9"	N/A	16	N/A	N/A	N/A	N/A
Board Room 2	15 x 29	435		N/A	16	N/A	N/A	N/A	N/A
Hall 1	33 x 21	693		40	35	10	45	100	90
Hall 2	21 x 26	546		30	25	7	30	75	60
Hall 3	33 x 21	693		40	35	10	45	100	90
Hall 4	21 x 26	546		30	25	7	30	75	60
Hall 5	48 x 59	2832		160	60	35	170	300	280
Combined Rooms									
Hall 1 & 2	21 x 60	1260	9'9"	90	55	15	90	125	145
Hall 3 & 4	21 x 60	1260		90	55	15	90	125	145
Hall 1 & 3	33 x 42	1386		90	45	15	100	125	176
Hall 2 & 4	42 x 26	1092		70	40	12	70	125	110
Halls 1 -4	42 x 60	2520		150	60	30	160	300	260
Halls 1 - 5 [All]	60 x 91	5460		300	N/A	60	200	450	600
Pre-Function Spaces									
Landing/Lobby	15 x 61	915	9'11"	N/A	N/A	12	N/A	150	N/A
Gallery 1/3/5	12 x 125	1500		N/A	N/A	15	N/A	225	N/A
Reception Hall	15 x 79	1185		50	N/A	15	130	150	150

UPMC Events Center

Room Dimensions & Capacities

Room	Dimensions	Sq. Ft.	Ceiling Height	Banquet 6' Round	Board	Info Fair	Class Room	Reception	Theatre
Special Event Spaces									
Eat'N Park Club	15 x 123	1845	8'10"	80	N/A	15	45	200	150
Hall of Colonials	16 x 168	2688	15'5"	130		45	84	275	295
Harshman Family Rotunda	38 x 42	1596	22'11"	100		25	60	200	175
Peoples Court [Arena]	109 x 162	17658 (31752)	33'5" (25')	600		270 (100)	800	1500	1100
South Concourse	16 x 168	2688	20'9"	150		25	75	275	400
West Concourse	36 x 100	3600	17'7"	150		34	100	300	400

UPMC Health Plan Conference Center

Hall Layouts

Hall 5



Hall 5



Hall 4



Hall 3



Hall 2



Hall 1



Gallery

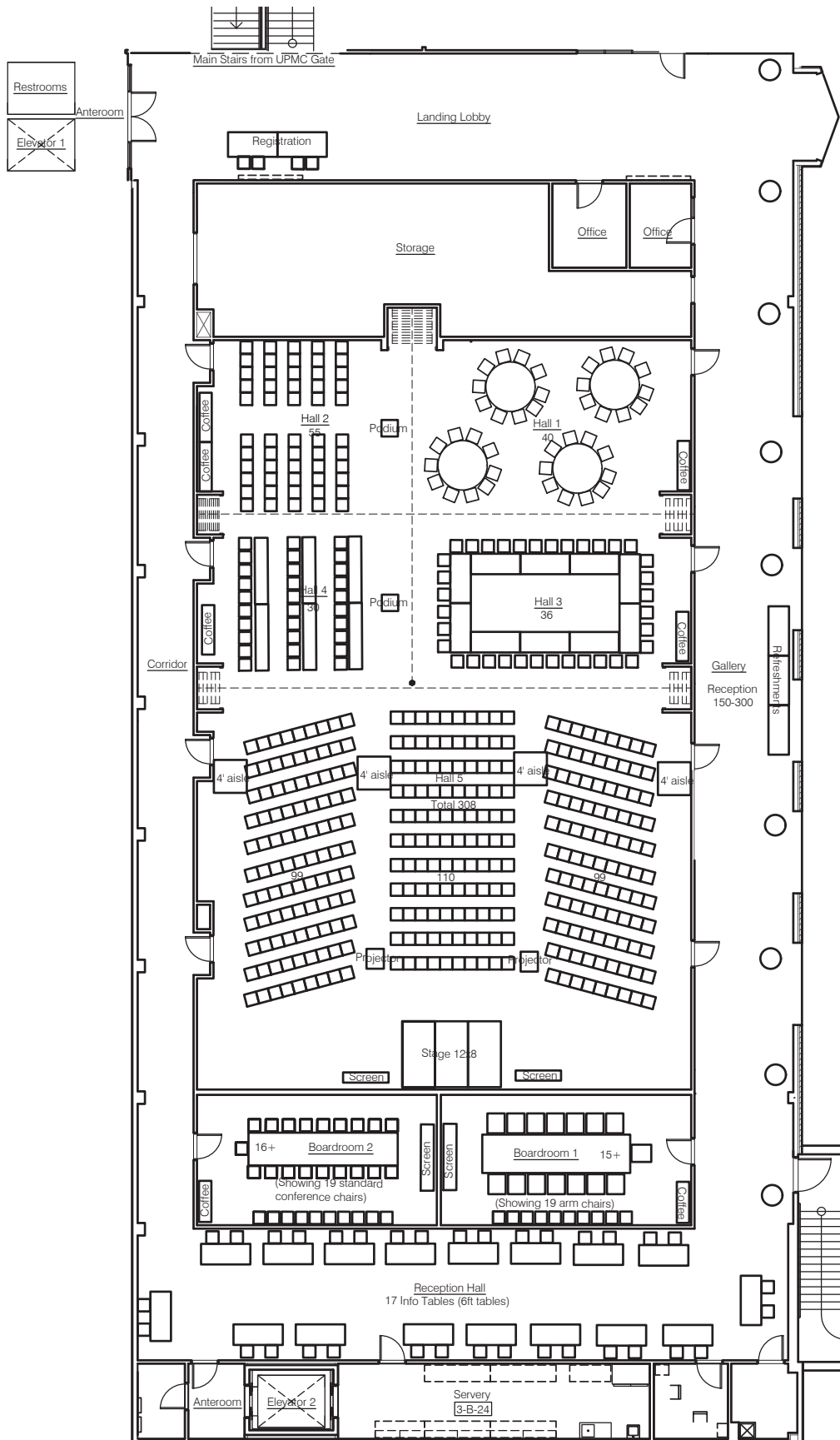


Reception Hall



UPMC Health Plan Conference Center

Base Floor Plan



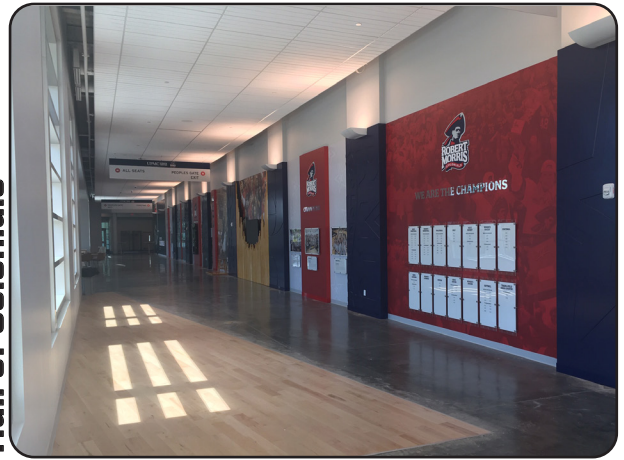
UPMC Events Center

Hall of Colonials & Peoples Court - Arena Floor Layouts

Hall of Colonials



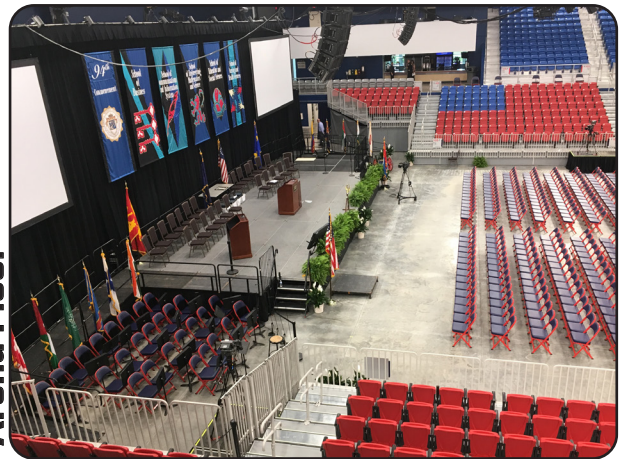
Hall of Colonials



Arena Floor



Arena Floor



Arena Floor



Arena Floor



This architectural floor plan depicts a large, rectangular hall with a complex layout of seating, stage, and service areas. The plan is oriented with the stage at the top, featuring a large 'STAGE' area and a 'SCREEN' area. The seating is organized into several distinct sections:

- Top Section:** A large area with rows of seating, labeled with numbers 100 through 114. This section is flanked by 'STAGE' and 'SCREEN' areas.
- Left Section:** A large area with rows of seating, labeled with numbers 501 through 519. This section is flanked by a 'STAGE' area and a 'SCREEN' area.
- Right Section:** A large area with rows of seating, labeled with numbers 600 through 616. This section is flanked by a 'STAGE' area and a 'SCREEN' area.
- Bottom Section:** A large area with rows of seating, labeled with numbers 700 through 716. This section is flanked by a 'STAGE' area and a 'SCREEN' area.

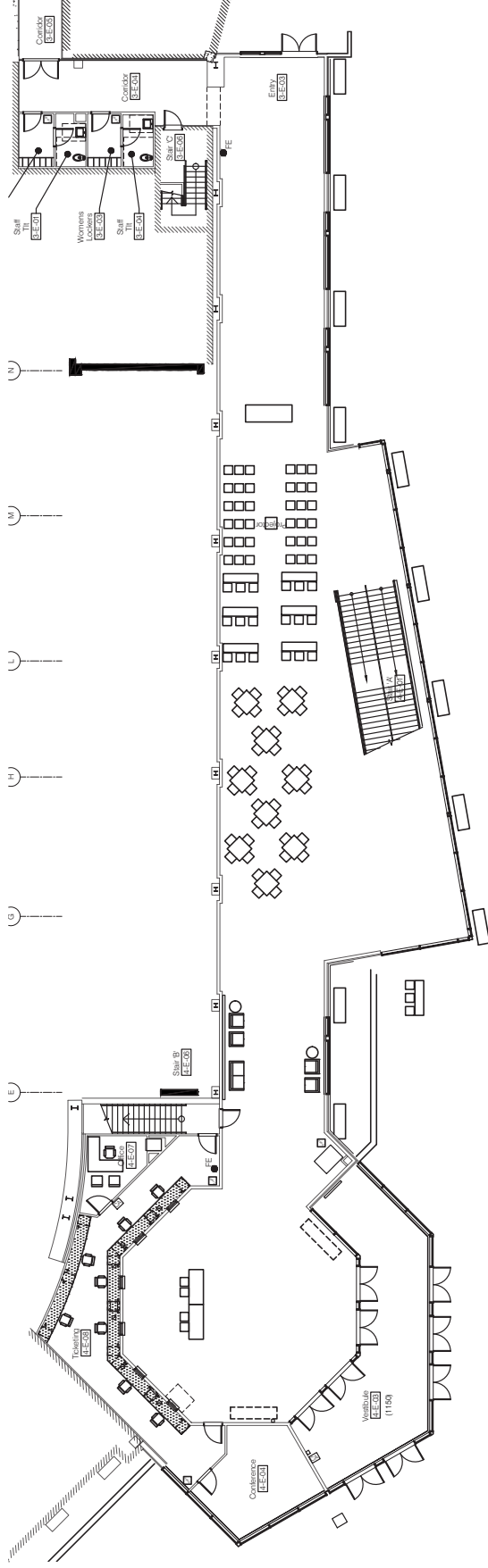
The plan also includes various service areas, including a 'RESTROOM' area, a 'CLOSET' area, and a 'STORAGE' area. The overall layout is designed to accommodate a large number of people, with clear pathways and designated areas for different functions.

This detailed architectural floor plan illustrates the 1st floor of the National Convention Center. The layout is organized into several key functional areas:

- Main Stage Area:** Located at the top of the plan, featuring a large rectangular stage labeled "MAIN STAGE TO REAR OF ROOMS" and an "Intermediate Concourse East (E1201)" above it.
- Seating and Ballroom:** The central and largest portion of the floor is dedicated to seating, represented by a grid of circular tables. A "BANQUET BOULEVARD" runs vertically through the middle of this area. The bottom section contains tiered seating and is labeled "STEPS TO CONCOURSE" and "STEPS TO CONCOURSE".
- Right Wing:** This section includes multiple rooms labeled "RECEPTION ROOM (E1202)", "RESTROOM (E1203)", and "LOBBY (E1204)". It also features a "BUILT CONDOLENE" area and a "RECEPTION ROOM (E1205)".
- Left Wing:** This section includes a "RECEPTION ROOM (E1206)", "RESTROOM (E1207)", and "LOBBY (E1208)". It also features a "BUILT CONDOLENE" area and a "RECEPTION ROOM (E1209)".
- Entrances and Exits:** The plan shows several entrances and exits, including "ENTRANCE (E1210)", "EXIT (E1211)", "EXIT (E1212)", "EXIT (E1213)", "EXIT (E1214)", "EXIT (E1215)", "EXIT (E1216)", "EXIT (E1217)", "EXIT (E1218)", "EXIT (E1219)", "EXIT (E1220)", "EXIT (E1221)", "EXIT (E1222)", "EXIT (E1223)", "EXIT (E1224)", "EXIT (E1225)", "EXIT (E1226)", "EXIT (E1227)", "EXIT (E1228)", "EXIT (E1229)", "EXIT (E1230)", "EXIT (E1231)", "EXIT (E1232)", "EXIT (E1233)", "EXIT (E1234)", "EXIT (E1235)", "EXIT (E1236)", "EXIT (E1237)", "EXIT (E1238)", "EXIT (E1239)", "EXIT (E1240)", "EXIT (E1241)", "EXIT (E1242)", "EXIT (E1243)", "EXIT (E1244)", "EXIT (E1245)", "EXIT (E1246)", "EXIT (E1247)", "EXIT (E1248)", "EXIT (E1249)", "EXIT (E1250)".
- Other Features:** The plan includes various smaller rooms, corridors, and service areas, all meticulously labeled with room numbers and names.

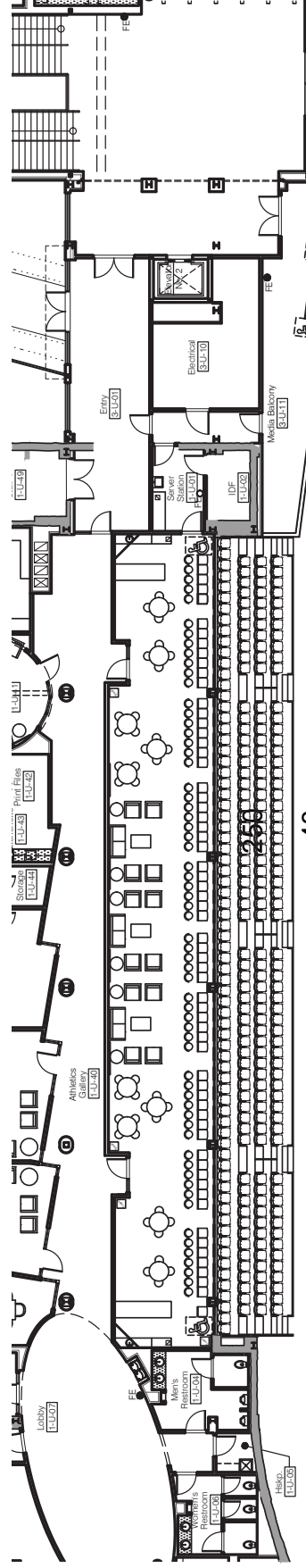
UPMC Events Center

Hall of Colonials



UPMC Events Center

Eat'N Park Club



UPMC Events Center

Harshman Family Rotunda, West Concourse & Eat’N Park Club

Harshman Family Rotunda



Harshman Family Rotunda



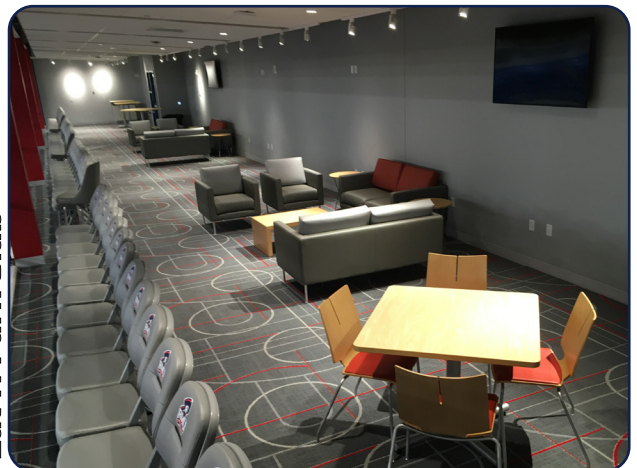
Harshman Family Rotunda



West Concourse

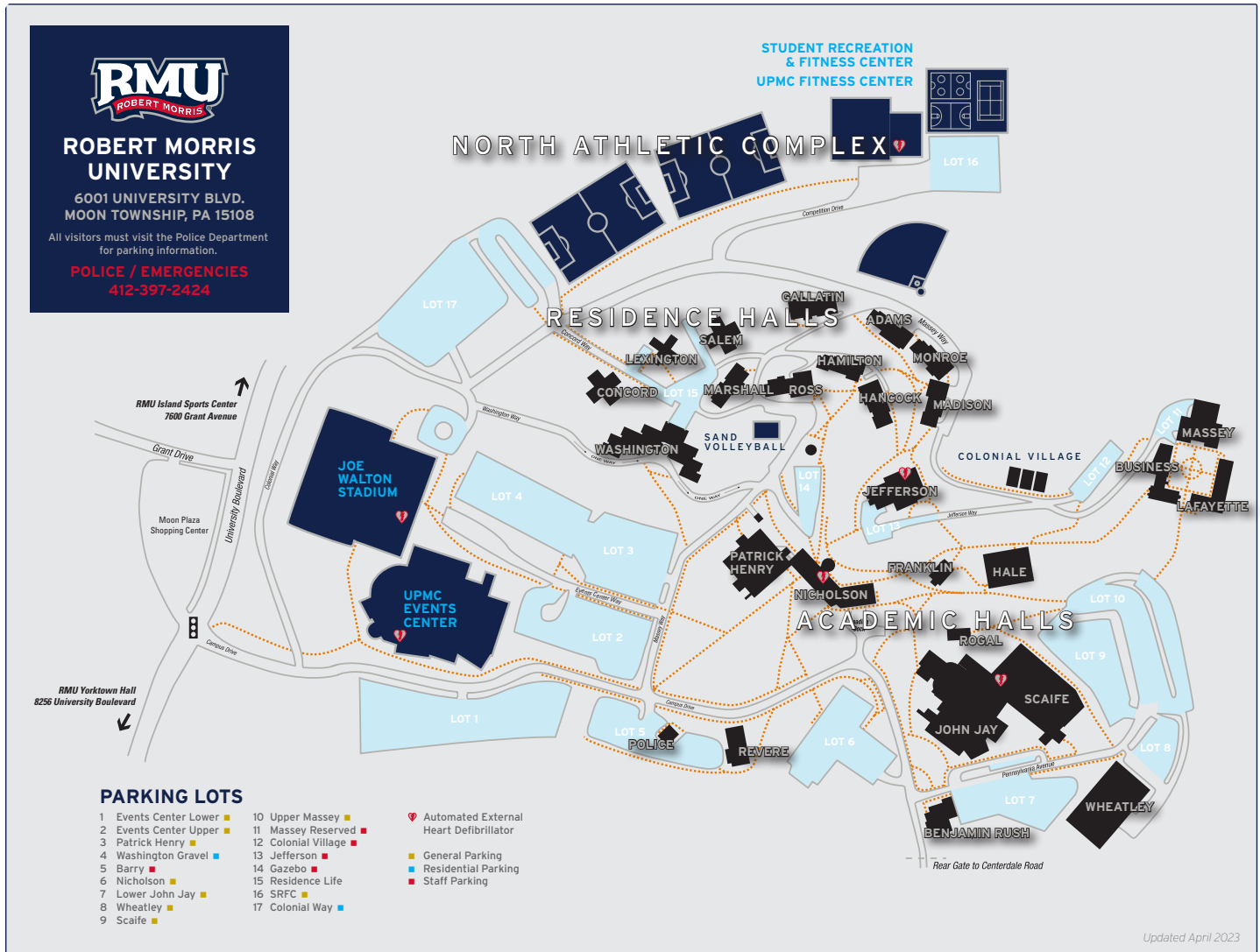


Eat’N Park Club



Driving Directions & Map

UPMC Gate



1. Enter campus from University Boulevard onto Campus Drive.
2. Continue on Campus Drive until you reach the stop sign at Massey Way.
3. Turn left onto Massey Way.
4. Take the first left into the Events Center Upper Lot.
5. Once parked, proceed down the steps or ramp to the UPMC Gate Entrance.
6. After entering the building, you may enter the elevator straight ahead and take it to the 4th floor or take the staircase on the right (behind the box office) up one floor.
7. At the conclusion of your event, proceed down one level (3rd floor in elevator) to depart.

UPMC EVENTS CENTER

at Robert Morris University

6001 University Boulevard Moon Township, PA 15108