



Notice of Meeting

52nd District Agricultural Association
SACRAMENTO COUNTY FAIR
BOARD OF DIRECTORS MEETING

Monday, Dec. 6, 2021 at 4:00 p.m. Held on ZOOM
California State Fairgrounds
1600 EXPOSITION BLVD
SACRAMENTO, CA 95815

MISSION STATEMENT

The Sacramento County Fair provides a fun, safe and educational family environment showcasing our community.

In accordance with Governor Gavin Newsom's March 12, 2020 Executive Order N-25-20, Board Directors and the California Department of Food and Agriculture may attend this meeting telephonically without public notice of or access to their teleconference location.

Join Zoom Meeting

<https://egusd-net.zoom.us/j/81649013355>

Meeting ID: 816 4901 3355

Passcode: SacFair

One tap mobile

+12133388477,,81649013355#,,,,*8124536# US (Los Angeles)

+16692192599,,81649013355#,,,,*8124536# US (San Jose)

Dial by your location

+1 213 338 8477 US (Los Angeles)

+1 669 219 2599 US (San Jose)

+1 669 900 6833 US (San Jose)

+1 971 247 1195 US (Portland)

+1 470 250 9358 US (Atlanta)

+1 470 381 2552 US (Atlanta)

+1 651 372 8299 US (Minnesota)

Meeting ID: 816 4901 3355

Passcode: 8124536

Find your local number: <https://egusd-net.zoom.us/j/kcwAxjt9Rs>

Public Comment

Any member of the public wishing to address the Board on any matter listed for consideration on this agenda shall fill out a Speaker's Form and provide it to the C.E.O./Fair Manager acting as the Board's Recording Secretary. All speakers will be recognized by the Chair and be allowed a maximum of three minutes to address the Board at the time the agenda item is being considered by the Board. If you wish to address the Board on a matter **not** listed on the agenda, please fill out a speaker's form and provide it to the C.E.O./Fair Manager. You will be allowed a maximum of five minutes to address the Board during the Public Comment period for items not on the agenda.

Americans with Disabilities Act

Pursuant to the Americans with Disabilities Act, individuals who, because of a disability, need special assistance to attend or participate in any Sacramento County Fair Board, Committee or any Advisory meetings, or in connection with other Sacramento County Fair Activities, may request assistance from the CEO at the Sacramento County Fair Offices, 1600 Exposition Boulevard, or by calling 916-263-2975, during normal business hours.

52nd District Agricultural Association

**Monday, Dec. 6, 2021 at 4:00 p.m. Held on ZOOM
BOARD MEETING AGENDA**

All matters noticed on this agenda, in any category, may be considered for action as listed. Any items not so noticed may not be considered. Items listed on this agenda may be considered in any order, at the discretion of the Chair.

1. CALL TO ORDER
2. ROLL CALL AND DIRECTORS ABSENT
3. INTRODUCE OF STAFF AND GUESTS
4. PUBLIC COMMENT ON ITEMS NOT ON THE AGENDA
5. APPROVAL OF BOARD MINUTES
6. FINANCIAL REPORT-
 - a. Information/Action regarding Current Financials
 - b. Information/ Action regarding 2022 Budget
 - c. Information/Action regarding 50 million Governor support
 - d. Information on 2021 CDFA allocation
7. LIVESTOCK REPORT- Jim Vietheer
 - a. Information/action regarding 2021 Livestock Grading & Husbandry Expo
8. CEO REPORT
 - a. Correspondence
 - b. Information/action regarding 2022 Fair Planning
9. UNFINISHED BUSINESS
 - a. Information Cal Expo Lease Renewal
 - b. Information Transition Plan JPA Option
10. NEW BUSINESS
 - a. Information/auctio regarding CFSA liability insurance
11. MATTERS OF INFORMATION
12. CLOSED SESSION: The Board is authorized to meet in Closed Session for the purpose of considering:
 - a. Personnel -Government Code Section 11126 (a)(1)
13. RECONVENE INTO OPEN SESSION: Report any action taken in closed session
14. ADJOURN

Americans With Disabilities Act

Pursuant to the Americans with Disabilities Act, individuals who, because of a disability, need special assistance to attend or participate in any Sacramento County Fair Board, Committee or any Advisory meetings, or in connection with other Sacramento County Fair Activities, may request assistance from the CEO at the Sacramento County Fair Offices, 1600 Exposition Boulevard, or by calling 916-263-2975, during normal business hours.



MINUTES
52nd DISTRICT AGRICULTURAL ASSOCIATION
SACRAMENTO COUNTY FAIR
BOARD OF DIRECTORS MEETING
VIA CONFERENCE CALL
August 23, 2021 at 4:00 p.m.
Sacramento County Fair Office

In accordance with Governor Gavin Newsom's March 12, 2020 Executive Order N-25-20, Board Directors and the California Department of Food and Agriculture may attend this meeting telephonically without public notice of or access to their teleconference location.

1. CALL TO ORDER

The meeting was called to order by Mike Albiani at 4:00 p.m.

2. ROLL CALL AND DIRECTORS ABSENT VIA CONFERENCE CALL

Board members present via zoom were: Joe Mohamed, Jr., Jim Perham, Mike Albiani, Coby Turner and Doug Dickson. Directors were reminded to mute their phones when not speaking.

3. INTRODUCTION OF BOARD MEMBERS, STAFF AND GUESTS- Pamela Fyock, Jim Vietheer and Louie Brown

4. PUBLIC INPUT & COMMENT-None

5. APPROVAL OF BOARD MINUTES- A motion to approve the April 13, 2021 minutes was made by Director Mohamed and seconded by Director Turner. President Albiani called for a voice vote: Joe Mohamed, Jr.-Y, Jim Perham-Y, Mike Albiani-Y, Coby Turner-Y and Doug Dickson-Y The motion passed.

6. FINANCIAL REPORT- a. President Albiani asked that CEO Fyock present the financial report. Fyock reviewed the July 31, 2021 financials. It was noted that the Livestock Expo did well, however due to COVID it was not open to the public did not generate a significant amount of money. Due to COVID and the inability to generate income through the SCF, expenses continue to be higher than revenue. A motion to accept the current financials was made by Director Turner and seconded by Director Mohamed. President Albiani called for a voice vote: Joe Mohamed, Jr.-Y, Jim Perham-Y, Mike Albiani-Y, Coby Turner-Y and Doug Dickson-Y. The motion passed.

7. AUDIT- Per CDFA, 2020 was an audit year for SCF. Fyock reviewed the audit and noted that the CPA firm Scinto Group found the audit to be "clean" and the financial records in compliance and met all the financial criteria. A motion to approve the 2020 SCF audit was made by Director Mohamed and seconded by Director Perham. President Albiani called for a voice vote: Joe Mohamed, Jr.-Y, Jim Perham-Y, Mike Albiani-Y, Coby Turner-Y and Doug Dickson-Y. The motion passed.

8. ALLOCATION- Fyock reviewed the required courses Directors MUST take prior to F&E releasing the 2021 allocation. She will check with F&E to make sure the Directors have received credit for all the classes they have taken. The 2022 allocation contract # 21-0455-000-SG was reviewed with Directors. A motion to accept the 2022 CDFA Allocation # 21-0455-000-SG was made by Director Perham and seconded by Director Mohamed. President Albiani called for a voice vote: Joe Mohamed, Jr.-Y, Jim Perham-Y, Mike Albiani-Y, Coby Turner-Y and Doug Dickson-Y. The motion passed.

9. LIVESTOCK REPORT-Chairman Vietheer, President Albiani and Fyock reviewed the 2021 Livestock Grading & Husbandry Expo. 613 4-H, FFA and Independent Exhibitors participated in the event. The Expo had 1868 entries, these number were up from the 2020 virtual livestock sale, but lower than the 2019 Fair. The event was well received and exhibitors had a great time. Kids were able to be kids! SCF wants to express the appreciation of all of the volunteers for assisting with the complete clean-up of the Cal Expo Backstretch. The Backstretch has never looked better thanks to the SCF parents, volunteers and exhibitors. The JLA auction was held over two days and it was both virtual and on-line. It generated close to \$870,000 for the 4-H & FFA exhibitors. The JLA has a small A/R but Fyock is in the process of doing the final collections.

10. CEO REPORT-

Correspondence- Fyock reviewed all correspondence in the Board packet.

2022 Fair- Plans are moving forward with a Fair for 2022. Several new items are being reviewed for the upcoming Fair. Fyock is currently reviewing the indoor competitive exhibits. Indoor competitive 4-H and FFA numbers continue to decline, it might be time to make it a requirement for the livestock exhibitors to entry an indoor entry if they want to sell an animal at the Fair.

11. UNFINISHED BUSINESS

- a. Cal Expo Lease- Director Albiani will start to negotiate the lease for the 2022 Fair with Cal Expo.
- b. State Transition Plan JPA Option- Louie Brown discussed the transition plan and thanked the Board for all their efforts with the Livestock Grading & Husbandry Expo. The transition is moving forward. Louie is working with the Chief Counsel Haig Baghdassarian and the Deputy Secretary Michael Flores at CDFA. Both gentlemen have been charged with the transition and getting it completed. The outline for the new JPA is finished and submitted to the Secretary Ross for presentation to the Governor. A question and answer sheet has been submitted to Mr. Flores for approval. As soon as that is approved, it will be release to the Fairs. The next step will be preparing the operational documents for the JPA. The process has taken longer than anyone has wanted, but it is moving forward. The JPA should be finalized by the end of the year. Directors asked Brown questions on the structure and function of the JPA.

Correspondence was reviewed and included in Director Packets.

12. NEW BUSINESS

- a. Discussion/action regarding Circular letter F2021-07 and Target Support Application F&E- Fyock has submitted all required documents. To date F&E has provide no criteria on how funds will be disbursed.
- b. Discussion/action regarding DAA Board Training and release of F&E Allocation- discussed in general comments
- c. Information regarding Fair Funding for 2021 Fair- discussed in general comments
- d. Discussion/action regarding Cal HR contract #R2170042- reviewed
- e. Information regarding liability insurance-no discussion

- 13. ADJOURN-** a motion to adjourn was made by Director Perham and seconded by Director Mohamed AT 5:10 p.m. President Albiani called for a voice vote: Joe Mohamed, Jr.-Y, Jim Perham-Y, Mike Albiani-Y, Coby Turner-Y and Doug Dickson-Y. The motion passed.

Submitted,

Pamela Fyock, CEO

Date

Mike Albiani, Chair

Date

52nd DAA, Sacramento County Fair

STATEMENT OF OPERATIONS

Board Summary

November 30, 2021

	Activity November 2021	Activity November 2020	YTD November 2021	YTD November 2020	Budget 2021	Balance of Budget
OPERATING REVENUES:						
ADMISSIONS TO GROUNDS	-	-	32,236	-	46,000	(13,764)
COMMERCIAL REVENUE	-	-	-	1,731	-	-
CARNIVAL REVENUE	-	-	-	-	-	-
CONCESSION REVENUE	-	-	5,694	600	24,000	(18,306)
EDUCATION REVENUE	-	-	-	-	-	-
LIVESTOCK REVENUE	-	-	30,805	19,557	112,100	(81,295)
COMPETITIVE EXHIBIT REVENUE (NON-LIVESTOCK)	-	-	-	154	-	-
HORSE SHOW REVENUE	-	-	3,116	-	11,000	(7,884)
FAIR ATTRACTION REVENUE	-	-	-	-	-	-
MISCELLANEOUS FAIR REVENUE	-	713	44,765	845	105,350	(60,585)
MISCELLANEOUS NON-FAIR REVENUE	-	-	-	-	-	-
INTERIM REVENUE	-	-	15	-	-	15
PRIOR YEAR REVENUE	-	-	-	-	-	-
OTHER OPERATING REVENUE	-	-	-	21,365	-	-

TOTAL REVENUES	-	713	116,631	44,252	298,450	(181,819)
-----------------------	---	-----	---------	--------	---------	-----------

OPERATING EXPENDITURES:						
ADMINISTRATION EXPENSES	8,202	21,394	293,933	177,035	278,400	(15,533)
MAINTENANCE & GENERAL OPERATIONS	975	1,080	28,724	15,874	4,600	(24,124)
PUBLICITY EXPENSES	816	1,500	4,235	10,567	-	(4,235)
ATTENDANCE OPERATIONS	-	-	45	-	-	(45)
MISCELLANEOUS FAIR EXPENSE (NOT including JLA)	-	-	656	-	-	(656)
MISCELLANEOUS NON-FAIR EXPENSE	-	-	-	-	-	-
EDUCATION EXPENSES	-	-	-	-	-	-
LIVESTOCK EXPENSES	-	-	10,955	859	55,800	44,845
COMPETITIVE EXHIBIT EXPENSE (NON-LIVESTOCK)	-	-	-	26	-	-
HORSE SHOW EXPENSES:	-	-	370	-	7,500	7,130
FAIR ENTERTAINMENT EXPENSES:	-	-	-	13,000	-	-
EQUIPMENT EXPENSES	-	-	-	-	-	-
PRIOR YEAR OPERATING EXPENSE ADJUSTMENT	-	-	-	-	-	-
CASH SHORTAGES & OVERAGES	-	-	-	-	-	-
DEPRECIATION EXPENSE	-	-	-	-	-	-

TOTAL EXPENSES	9,993	23,974	338,918	217,360	346,300	(7,382)
-----------------------	-------	--------	---------	---------	---------	---------

Net Gain/Loss Before Allocation	(9,993)	(23,262)	(222,287)	(173,108)	(47,850)	(174,437)
--	---------	----------	-----------	-----------	----------	-----------

STATE ALLOCATION	(22,140)	-	-	-	105,700	(105,700)
OTHER F&E ALLOCATIONS	-	-	-	-	-	-
F&E PROJECT FUNDS	-	-	-	-	-	-
FLEX CAPITAL FUNDING	-	-	-	-	-	-
MILLENNIUM FLEX	-	-	-	-	-	-

Net Gain/Loss After Allocation	(32,133)	(23,262)	(222,287)	(173,108)	57,850	(280,137)
---------------------------------------	----------	----------	-----------	-----------	--------	-----------

Detail of Revenues

	Acct. No.	Activity November 2021	Activity November 2020	YTD November 2021	YTD November 2020	Budget 2021	Balance of Budget
ADMISSIONS TO GROUNDS							
Admission to Grounds	41000	-	-	-	-	-	-
Regular Fair Admissions	41010	-	-	12,871	-	10,000	2,871
Advance Sales	41015	-	-	-	-	-	-
Discount Fair Admissions	41020	-	-	19,365	-	-	19,365
Discount Fair Admissions - Livestock	41021	-	-	-	-	36,000	(36,000)
Discount Fair Admissions-Vendor	41022	-	-	-	-	-	-
TOTAL ADMISSION TO GROUNDS		-	-	32,236	-	46,000	(13,764)
COMMERCIAL REVENUE							
Commercial Space Insurance Revenue	41500	-	-	-	-	-	-
Outside Commercial Space	41510	-	-	-	181	-	-
Inside Commercial Space	41520	-	-	-	-	-	-
Application Fees	41530	-	-	-	1,550	-	-
Commercial Exhibit Utility Fee	41540	-	-	-	-	-	-
Commercial Space Commission	41550	-	-	-	-	-	-
TOTAL COMMERCIAL REVENUE		-	-	-	1,731	-	-
CARNIVAL REVENUE							
Carnival	42100	-	-	-	-	-	-
Carnival Presale	42110	-	-	-	-	-	-
Carnival Presale Livestoc	42111	-	-	-	-	-	-
Carnival Presale Group NP	42110	-	-	-	-	-	-
TOTAL CARNIVAL REVENUE		-	-	-	-	-	-
CONCESSION REVENUE							
Concessions	42000	-	-	-	-	-	-
Food Concessions	42200	-	-	4,225	-	24,000	(19,775)
Safe Food Handling Fee	42210	-	-	724	-	-	724
Food Vendor Utility Fee	42240	-	-	745	-	-	745
Other Concessions	42250	-	-	-	-	-	-
Non-Food Concessions (Application Fees)	42300	-	-	-	600	-	-
Entertainer Mdse Sales	42310	-	-	-	-	-	-
RV/Stock Truck Revenue	42310	-	-	-	-	-	-
TOTAL CONCESSION REVENUE		-	-	5,694	600	24,000	(18,306)
EDUCATION REVENUE							
School Tours	43500	-	-	-	-	-	-
Wheel Barrow Revenue	43510	-	-	-	-	-	-
TOTAL EDUCATION REVENUE		-	-	-	-	-	-
LIVESTOCK REVENUE							
Entry Fees	43101	-	-	-	-	-	-
Entry Fees Livestock	43101	-	-	14,764	12,346	28,000	(13,236)
Entry Fees On-line Processing	43105	-	-	-	3,850	9,000	(9,000)
Entry Fees On-line Processing (In-House)	43106	-	-	-	-	-	-
Sponsored Awards Livestock	43201	-	-	12,911	3,362	38,900	(25,989)
Foundation Premium Book Donations	43310	-	-	-	-	-	-
Other Parking	43400	-	-	-	-	25,000	(25,000)
Other Insurance	43401	-	-	3,130	-	11,200	(8,070)
Other Indoor Exhibit	43401	-	-	-	-	-	-
Wool Revenue	43800	-	-	-	-	-	-
TOTAL LIVESTOCK REVENUE		-	-	30,805	19,557	112,100	(81,295)

COMPETITIVE EXHIBIT REVENUE (NON-LIVESTOCK)							
Entry Fees - Adults	43103	-	-	-	-	-	-
Entry Fees - Youth	43102	-	-	-	154	-	-
Entry Fees On-line Processing	43110	-	-	-	-	-	-
Entry Fees On-line Processing (In-House)	43111	-	-	-	-	-	-
Donated & Sponsored Awards	43202	-	-	-	-	-	-
TOTAL COMPETITIVE EXHIBIT REVENUE		-	-	-	154	-	-

Detail of Revenues

	Acct. No.	Activity November 2021	Activity November 2020	YTD November 2021	YTD November 2020	Budget 2021	Balance of Budget
HORSE SHOW REVENUE							
Entry Horse Show 4H	43104	-	-	2,004	-	6,000	(3,996)
Horse Performance Class Entry Fees	44210	-	-	-	-	-	-
Horse Show Entry Fee Processing (In-House)	43112	-	-	-	-	-	-
Horse Halter Class Entry Fees	44220	-	-	-	-	-	-
Horse Show Stall Fees	44400	-	-	720	-	4,000	(3,280)
Other (Horse Show)	44600	-	-	112	-	-	112
Horse Show Insurance	44500	-	-	280	-	1,000	(720)
TOTAL HORSE SHOW REVENUE		-	-	3,116	-	11,000	(7,884)
FAIR ATTRACTION REVENUE							
Rodeo Admission	46400	-	-	-	-	-	-
Rodeo Sponsorship	46410	-	-	-	-	-	-
Tractor Pull Admission	46600	-	-	-	-	-	-
Tractor Pull Sponsorship	46600	-	-	-	-	-	-
Monster Truck Admission	46500	-	-	-	-	-	-
Destruction Derby Admission	46410	-	-	-	-	-	-
Destruction Derby Sponsorship	46401	-	-	-	-	-	-
TOTAL FAIR ATTRACTION REVENUE		-	-	-	-	-	-
MISCELLANEOUS FAIR REVENUE							
Program Revenue (Sales Ad)	47200	-	-	-	-	-	-
T-shirt Sales	47230	-	-	-	-	-	-
Souvenir Sales	47240	-	-	-	-	-	-
Advertising Sales (Premium Book)	47400	-	-	-	-	-	-
Stall Rentals Fairtime	47500	-	-	-	-	-	-
Camp Fees Exhibitor	47700	-	-	-	-	-	-
Other Parking (Levee)	47110	-	-	10,015	125	20,000	(9,985)
Fair Parking/Admission	47000	-	-	-	-	-	-
Other Parking - Vendor	47010	-	-	-	8	-	-
Camp Fees Vendor	47710	-	713	-	713	-	-
Other (Specify)	47800	-	-	-	-	-	-
Other - Merchandise Sales	47810	-	-	-	-	-	-
Other -Advertising	47820	-	-	-	-	-	-
Sponsorships	47900	-	-	34,750	-	85,350	(50,600)
Foundation Contribution	47900	-	-	-	-	-	-
TOTAL MISCELLANEOUS FAIR REVENUE		-	713	44,765	845	105,350	(60,585)
MISCELLANEOUS NON-FAIR REVENUE							
Cal Expo Parking	47100	-	-	-	-	-	-
Misc-Nonfair Programs Other	47505	-	-	-	-	-	-
Foundation Revenue	47505	-	-	-	-	-	-
TOTAL MISCELLANEOUS NON-FAIR REVENUE		-	-	-	-	-	-
INTERIM REVENUE							
Equipment Rental	48300	-	-	-	-	-	-
Reimbursement	48500	-	-	-	-	-	-
Other (Specify)	48710	-	-	15	-	-	15
Bad Check Fees	48720	-	-	-	-	-	-
TOTAL EXHIBIT REVENUE		-	-	15	-	-	15

Detail of Revenues

	Acct.	Activity	Activity	YTD	YTD	Budget	Balance
	No.	November	November	November	November	2021	of
		2021	2020	2021	2020		Budget
PRIOR YEAR REVENUE							
Prior Year Revenue	49000	-	-	-	-	-	-
TOTAL PRIOR YEAR REVENUE		-	-	-	-	-	-
OTHER OPERATING REVENUE							
Other Operating Revenue	49500	-	-	-	21,365	-	-
Interest Earnings	49510	-	-	-	-	-	-
Other Operating Revenue-State checks	49530	-	-	-	-	-	-
Revenue-4H Ribbons/Judges	49540	-	-	-	-	-	-
TOTAL OTHER OPERATING REVENUE		-	-	-	21,365	-	-

Detail of Expenditures

	Acct. No.	Activity November 2021	Activity November 2020	YTD November 2021	YTD November 2020	Budget 2021	Balance of Budget
ADMINISTRATION EXPENSES							
Salaries & Wages - Permanent	50100	7,694	-	61,552	-	170,000	108,448
Salaries & Wages - Temporary	50200	-	7,694	19,235	110,427	-	(19,235)
Compensated Absence Expense	50300	-	-	-	-	-	-
Employee Benefits	50310	2,257	-	145,163	-	-	(145,163)
Payroll Taxes	50320	603	112	5,253	1,589	2,000	(3,253)
Workers Compensation	50330	(2,541)	349	13,015	2,099	4,000	(9,015)
Exp-Pro Services Contract	50400	-	-	7,162	-	24,000	16,838
Professional Services-Contracts	50410	-	5,115	883	14,280	-	(883)
Admin Fee CFSA Benefits	50420	-	-	-	-	-	-
Professional Services	50430	-	306	5,110	4,148	-	(5,110)
Directors Expense	50500	-	-	-	-	-	-
Exp-PR Dining	50510	-	-	-	-	-	-
Traveling Expense Employees	50600	-	242	2,520	379	-	(2,520)
Training Expense	50610	-	-	-	-	-	-
Office Supplies	50700	110	1,843	2,384	2,977	2,000	(384)
Telephone	50800	283	183	2,328	2,520	5,400	3,072
Postage	50820	-	-	176	324	1,000	824
Dues & Subscription	50900	20	-	405	2,310	3,800	3,395
Insurance	51000	-	-	12,409	12,849	30,000	17,591
General Liability Insurance	51010	-	-	-	2,000	24,000	24,000
Revenue Protection Insurance	51020	-	-	-	-	-	-
Demolition Derby Insurance	51030	-	-	-	-	-	-
Other (Specify)	51100	76	51	3,083	5,409	200	(2,883)
Other (DGS Late Fees)	51120	-	-	-	-	-	-
Unemployment Insurance	51200	(300)	-	1,873	8,973	2,000	127
Audit Cost	51300	-	5,500	11,382	6,750	10,000	(1,382)
Bad Debt Expense	51400	-	-	-	-	-	-
TOTAL ADMINISTRATION EXPENSE		8,202	21,394	293,933	177,035	278,400	(15,533)

Detail of Expenditures

	Acct. No.	Activity November 2021	Activity November 2020	YTD November 2021	YTD November 2020	Budget 2021	Balance of Budget
MAINTENANCE & GENERAL OPERATIONS							
Salaries & Wages - Permanent	52100	975	-	5,755	-	-	(5,755)
Salaries & Wages - Temporary	52200	-	-	5,142	-	-	(5,142)
S&W Concessions	52201	-	-	-	-	-	-
S&W Livestock	52202	-	-	-	-	-	-
Employee Benefits	52210	-	-	-	-	-	-
Payroll Taxes	52220	-	-	-	-	-	-
Professional Services (Contracts)	52300	-	1,080	12,213	12,598	-	(12,213)
Event Janitorial	52310	-	-	-	-	-	-
Post Event	52320	-	-	-	-	-	-
Supervision	52330	-	-	-	-	-	-
Security Uniform	52340	-	-	-	-	-	-
Rental Land & Bldgs	52400	-	-	-	-	-	-
Rent Maintenance Equipment	52500	-	-	1,951	94	3,000	1,049
Rental Pub address	52600	-	-	-	-	-	-
Temp Eletrical Work	52700	-	-	-	-	-	-
Light, Heat, Water, and Electricity	52800	-	-	750	1,575	1,600	850
Maint of Equipment	52900	-	-	-	-	-	-
Maint of Grounds	53000	-	-	1,611	557	-	(1,611)
Trash Removal, Clean Up	53100	-	-	1,215	-	-	(1,215)
Other - Cash Register	53200	-	-	-	-	-	-
Maint of Bldgs and Grounds	53300	-	-	89	1,050	-	(89)
TOTAL MAINTENANCE EXPENSE		975	1,080	28,724	15,874	4,600	(24,124)
PUBLICITY EXPENSES							
Salaries & Wages	54100	-	-	-	-	-	-
Professional Service Contracts	54200	-	-	-	-	-	-
Supplies & Expense	54300	-	-	1,740	2,317	-	(1,740)
Advertising	54400	816	1,500	2,496	8,250	-	(2,496)
Promotional Expense	54500	-	-	-	-	-	-
Promotional Other Art	54510	-	-	-	-	-	-
Promotional Poster Art	54520	-	-	-	-	-	-
Promotional Poster Production	54525	-	-	-	-	-	-
Promotional Button Production	54535	-	-	-	-	-	-
Percent Promotin Paid	54550	-	-	-	-	-	-
TOTAL PUBLICITY EXPENSE		816	1,500	4,235	10,567	-	(4,235)
ATTENDANCE OPERATIONS							
Salaries & Wages	56100	-	-	-	-	-	-
Professional Services Contract	56200	-	-	-	-	-	-
Professional Svc Cntr - ATTN Temp Emp	56210	-	-	-	-	-	-
Payroll Taxes	56300	-	-	-	-	-	-
Worker's Compensation	56210	-	-	-	-	-	-
Supplies & Expense	56300	-	-	45	-	-	(45)
TOTAL ATTENDANCE OPERATIONS		-	-	45	-	-	(45)

Detail of Expenditures

	Acct. No.	Activity November 2021	Activity November 2020	YTD November 2021	YTD November 2020	Budget 2021	Balance of Budget
MISCELLANEOUS FAIR EXPENSE (NOT including JLA)							
Program Expense	57200	-	-	-	-	-	-
Program Printing	57210	-	-	-	-	-	-
Safe Food Handling Fee	57220	-	-	694	-	-	(694)
Utility Fees	57300	-	-	-	-	-	-
Premium Book Expense	57400	-	-	-	-	-	-
Premium Book Printing	57410	-	-	-	-	-	-
Other T-Shirts	57430	-	-	-	-	-	-
Sponsorships	57700	-	-	(37)	-	-	37
Other Merchandise	57710	-	-	-	-	-	-
Other (Specify)	57800	-	-	-	-	-	-
Fairs 2000 Fundings	57810	-	-	-	-	-	-
Exp-Comm Exh & Concession	57900	-	-	-	-	-	-
TOTAL MISCELLANEOUS FAIR		-	-	656	-	-	(656)
MISCELLANEOUS NON-FAIR EXPENSE							
Misc Non-Fair WFA Conference	57440	-	-	-	-	-	-
Foundation Expenses	57450	-	-	-	-	-	-
TOTAL MISCELLANEOUS NON-FAIR		-	-	-	-	-	-
EDUCATION EXPENSES							
Salaries & Wages - Temporary	62101	-	-	-	-	-	-
Payroll Taxes	62200	-	-	-	-	-	-
Worker's Compensation	62210	-	-	-	-	-	-
Wheel Barrow Expenses	62300	-	-	-	-	-	-
TOTAL EDUCATION EXPENSE		-	-	-	-	-	-
LIVESTOCK EXPENSES							
Salaries & Wages	63100	-	-	-	-	-	-
Salaries Exhibit Livestock	63101	-	-	-	-	35,800	35,800
Employee Benefits	63110	-	-	-	-	-	-
Payroll Taxes	63120	-	-	-	-	-	-
Worker's Compensation	63200	-	-	-	-	-	-
Cash Awards	58100	-	-	-	-	-	-
Premium Award - Livestock	58001	-	-	-	-	-	-
Cash Awards	58100	-	-	-	-	-	-
Premiums - Tropies, Medals, Ribbons	58200	-	-	4,682	-	16,000	11,318
Tropies, Medals, Ribbons	58200	-	-	182	-	-	(182)
Other Awards Livestock	58501	-	-	-	-	-	-
Parking	63700	-	-	-	-	-	-
Professional Services Judges	63200	-	-	3,845	-	2,000	(1,845)
Professional Services Judges	63201	-	-	2,200	-	-	(2,200)
Professional Svcs Livestock	63300	-	-	-	-	-	-
Professional Svcs Livestock	63301	-	-	(88)	713	-	88
Supplies Livestock	63410	-	-	134	147	2,000	1,867
Tent & Booth Rental	63500	-	-	-	-	-	-
Decorations	63600	-	-	-	-	-	-
Exhibit Other Livestock	63701	-	-	-	-	-	-
Wool Expense	63800	-	-	-	-	-	-
TOTAL LIVESTOCK EXPENSE		-	-	10,955	859	55,800	44,845
COMPETITIVE EXHIBIT EXPENSE (NON-LIVESTOCK)							
Salaries & Wages Kids Park	63103	-	-	-	-	-	-
Salaries Exhibit (Non Livestock)	63100	-	-	-	-	-	-

Salaries Exhibit (Non Livestock)	63102	-	-	-	-	-	-
Tropies, Medals, Ribbons	58200	-	-	-	-	-	-
Sponsored Awards, Ribbons	58400	-	-	-	-	-	-
Premiums - Indoor	58102	-	-	-	-	-	-
Professional Services Judges - Indoor	63202	-	-	-	-	-	-
Professional Svcs Indoor	63300	-	-	-	-	-	-
Supplies	63400	-	-	-	26	-	-
Supplies-Vendor	63404	-	-	-	-	-	-
Supplies - Indoor Exhibits	63440	-	-	-	-	-	-
Exhibit Other Livestock	63701	-	-	-	-	-	-
TOTAL COMPETITIVE EXHIBIT EXPENSE		-	-	-	26	-	-

Detail of Expenditures

	Acct. No.	Activity November 2021	Activity November 2020	YTD November 2021	YTD November 2020	Budget 2021	Balance of Budget
HORSE SHOW EXPENSES:							
Salaries & Wages - Temporary	64101	-	-	-	-	7,500	7,500
Payroll Taxes	64120	-	-	-	-	-	-
Judges	64200	-	-	-	-	-	-
Professional Services	64300	-	-	-	-	-	-
Supplies	67400	-	-	370	-	-	(370)
Cash Awards	64710	-	-	-	-	-	-
Awards	64720	-	-	-	-	-	-
TOTAL HORSE SHOW EXPENSE		-	-	370	-	7,500	7,130
FAIR ENTERTAINMENT EXPENSES:							
Salaries & Wages	66100	-	-	-	-	-	-
Salaries & Wages - Temporary	66101	-	-	-	-	-	-
Motorized Racings	66109	-	-	-	-	-	-
Budget-Salaries Entertainment	66199	-	-	-	-	-	-
Professional Services	66200	-	-	-	3,000	-	-
Supplies & Expenses	66300	-	-	-	-	-	-
Rodeo	66400	-	-	-	-	-	-
Rodeo Sound	66401	-	-	-	-	-	-
Rodeo PR	66400	-	-	-	-	-	-
Rodeo Poster	66500	-	-	-	-	-	-
Rodeo Shirts	66400	-	-	-	-	-	-
Rodeo Labor	66500	-	-	-	-	-	-
Team Sorting Labor	66400	-	-	-	-	-	-
Truck Event	66411	-	-	-	-	-	-
Team Sorting Cattle	66400	-	-	-	-	-	-
Team Sorting Asso. Fees	66500	-	-	-	-	-	-
Team Sorting Paybacks	66400	-	-	-	-	-	-
Team Sorting Miscellaneous	66500	-	-	-	-	-	-
Demolition Derby	66410	-	-	-	-	-	-
Demolition Derby Sound & Labor	66421	-	-	-	-	-	-
Grounds Act	66500	-	-	-	10,000	-	-
Barn Area	66610	-	-	-	-	-	-
Entertainment Stages	66620	-	-	-	-	-	-
Building C	66610	-	-	-	-	-	-
TOTAL FAIR ENTERTAINMENT EXPENSE		-	-	-	13,000	-	-
EQUIPMENT EXPENSES							
Equipment Purchase Non-Capitalized	72300	-	-	-	-	-	-
TOTAL EQUIPMENT EXPENSE		-	-	-	-	-	-
PRIOR YEAR OPERATING EXPENSE ADJUSTMENT							
Prior Year Operating Expense Adjustment	80000	-	-	-	-	-	-
Prior Year Bad Debt Expense	80020	-	-	-	-	-	-
PRIOR YEAR OPERATING EXPENSE		-	-	-	-	-	-
CASH SHORTAGES & OVERAGES							
Cash Short/Over	85000	-	-	-	-	-	-
CASH (OVER)/UNDER		-	-	-	-	-	-
DEPRECIATION EXPENSE							
Depreciation	90000	-	-	-	-	-	-
TOTAL DEPRECIATION EXPENSE		-	-	-	-	-	-

OPERATING BUDGET

52nd DISTRICT AGRICULTURAL ASSOCIATION

Sacramento COUNTY

Conducting The Sacramento County Fair

at Sacramento, California

For the period of January 1, 2022 to December 31, 2022

	Acct. No.	Actual 2020	Budgeted 2021	Estimated 2021	Proposed 2022
TOTAL NET RESOURCES, JANUARY 1:					
Unrestricted net resources		\$120,960	\$128,695	(\$72,084)	(\$260,618)
Unrestricted Net Position - Pension			\$0	0	0
Restricted resources				0	0
Investment in Capital Assets, Net of Related Debt		8,753	1,945	8,753	1,945
Subtotal (Total Net Resources)		129,713	130,640	(63,331)	(258,673)
RESOURCES ACQUIRED:					
Operating Revenues (From Page 2)		44,251	176,900	111,631	1,082,715
State (Local/Base) Allocations (to Page 2):	31200				
Training Allocation & Other Fiscal & Admin Assistance (F&E)	31300				
Capital Project Reimbursement Funds (from Sched 8A)	31900			0	0
One-time Revenue Sources (fire camp, sale of property, capital project au	32500				
Contributions from Other Gov't (non-F&E) Sources (to Page 2)	33000				
Other (e.g., Perf Rating used for oper.) (to Page 2)	34000			(3)	
TOTAL RESOURCES ACQUIRED		44,251	176,900	111,628	1,082,715
TOTAL RESOURCES AVAILABLE		173,964	307,540	48,297	824,042
RESOURCES APPLIED:					
Operating Expenditures (From Page 2)		237,294	171,900	306,970	1,063,450
Other Operating Expenditures (e.g. Audit Adjustments)					
Subtotal - Operating Expenditures (Excluding Depreciation)		237,295	171,900	306,970	1,063,450
Depreciation Expense (From Page 10)	90000	0	0	0	0
Pension Expense (From Page 10)	96000	0	0	0	0
TOTAL RESOURCES APPLIED		237,295	171,900	306,970	1,063,450
TOTAL NET RESOURCES, DECEMBER 31:		(\$63,331)	\$135,640	(\$258,673)	(\$239,408)
Unrestricted Net Resources Available for Operations		(72,084)	133,695	(260,618)	(239,408)
Unrestricted Net Position - Pension	29400	0	0	0	0
Restricted Net Resources					
Investment in Capital Assets (From Schedule 7)		8,753	1,945	1,945	0
Subtotal (Should equal Total Net Resource Figure above)		(\$63,331)	\$135,640	(\$258,673)	(\$239,408)
Reserve Percentage		-30.4%	77.8%	-84.9%	-22.5%

Summary of Operations

Sacramento County Fair

	Acct. No.	Actual 2020	Budgeted 2021	Estimated 2021	Proposed 2022
OPERATING REVENUES:					
Admissions to Grounds	41000		\$23,000	\$32,236	\$315,000
Commercial Space	41500	1,731			100,300
Carnival	42100				153,500
Concessions	42200	600	12,000	5,694	155,450
Exhibits	43000	154			5,850
Horse Show	44000		5,500	3,116	7,300
Livestock Revenue	45000	19,558	56,050	30,805	65,700
Satellite Wagering	45005				
Fair Attractions	46000				72,000
Motorized Racing	46109				
Interim Attractions	46009				
Miscellaneous Fair	47000	846	80,350	39,765	208,000
Miscellaneous Non-Fair Programs	47005				
Interim Revenue	48000			15	1,615
Prior Year Revenue Adjustments	49000				
Other Operating Revenue	49500	21,365			
TOTAL OPERATING REVENUES (to Page 1)		44,254	176,900	111,631	1,082,715
OPERATING EXPENDITURES:					
Administration	50000	195,648	139,200	267,842	466,250
Maintenance & General Operations	52000	17,219	2,300	25,471	51,800
Publicity	54000	10,587		1,874	101,000
Attendance Operations	56000			45	
Miscellaneous Fair	57000			694	23,900
Miscellaneous Non-Fair Programs	57005				5,500
Premiums	58000				
Exhibits	63000	860	27,900	11,043	54,000
Exhibits	63000				2,800
Horse Show	64000		2,500		3,200
Horse Racing (Live)	65000				
Satellite Wagering	65005				
Fair Entertainment	66000	13,000			355,000
Motorized Racing	66109				
Interim Entertainment	66009				
Equipment (Funded by Fair)	72300				
Prior Year Expense Adjustments	80000				
Cash (over/under)	85000				
Other Operating Expense	94000				
TOTAL OPERATING EXPENDITURES (to Page 1)		237,294	171,900	306,969	1,063,450
NET OPERATING PROFIT/(LOSS) BEFORE DEPRECIATION & PENSION		(193,040)	5,000	(195,338)	19,265
Depreciation Expense	90000				
Pension Expense	96000				
NET OPERATING PROFIT/(LOSS) AFTER DEPRECIATION & PENSION		(193,040)	5,000	(195,338)	19,265
LOCAL (BASE) ALLOCATION - (From Page 1)	31200				
OTHER FUNDS - ACCT. #313, #325, #330, #340 (From Page 1)				(3)	
UTILIZATION OF UNRESTRICTED NET RESOURCES (if applicable)					
NET PROFIT/(LOSS) BEFORE DEPRECIATION & PENSION, CURRENT YEAR		(\$193,040)	\$5,000	(\$195,341)	\$19,265
NET PROFIT/(LOSS) AFTER DEPRECIATION & PENSION, CURRENT YEAR		(\$193,040)	\$5,000	(\$195,341)	\$19,265

Detail of Revenues

	Acct. No.	Actual 2020	Budgeted 2021	Estimated 2021	Proposed 2022
ADMISSIONS REVENUE:					
Regular Fair Admissions	41010	0	5,000	12,871	260,000
Discounted Fair Admissions	41020	0	0	19,365	36,000
Discounted Fair Admissions-Livestock	41021	0	18,000	0	18,000
Discounted Fair Admissions-Vendor	41022	0	0	0	1,000
TOTAL ADMISSIONS REVENUE	41000	0	23,000	32,236	315,000
COMMERCIAL SPACE REVENUE:					
Commercial Space Insurance Revenue	41500	0	0	0	1,500
Outside Commercial Space	41510	181	0	0	35,000
Inside Commercial Space	41520	0	0	0	55,000
Application Fees	41530	1,550	0	0	4,800
Commercial Exhibit Utility Fee	41540				0
Commercial Space Commission	41550				4,000
TOTAL COMMERCIAL SPACE REVENUE	41500	1,731	0	0	100,300
CARNIVAL REVENUE:					
Carnival	42100	0	0	0	110,000
Carnival: Pre-Sale	42110	0	0	0	25,000
Carnival: Pre-Sale Livestock	42111	0	0	0	18,500
TOTAL CARNIVAL REVENUE	42100	0	0	0	153,500
CONCESSIONS REVENUE:					
Concessions	42000	0	0	0	0
Food Concessions	42200	0	12,000	4,225	140,000
Safe Food Handling Fee	42210	0	0	724	3,750
Food Vendor Utility Fee	42240	0	0	745	4,400
Non-Food Concessions(Application Fees)	42300	600	0	0	1,000
RV/Stock Truck Revenue	42310	0	0	0	6,300
TOTAL CONCESSIONS REVENUE	42200	600	12,000	5,694	155,450
LIVESTOCK REVENUE:					
Entry Fees	43101	0	0	0	900
Entry Fees Livestock	43101	12,346	14,000	14,764	25,000
Entry Fees Online Processing	43105	3,850	4,500	0	6,000
Entry Fees Online Processing (In-house)	43106	0	0	0	200
Sponsored Awards Livestock	43201	3,362	19,450	12,911	10,000
Other Parking	43400		12,500		18,000
Other Insurance	43401	0	5,600	3,130	5,600
Wool Revenue	43800	0	0	0	0
TOTAL LIVE HORSE RACING REVENUE		19,558	56,050	30,805	65,700
EXHIBITS REVENUE:					
Entry Fees-Adults	43103	0	0	0	850
Entry Fees-Youth	43102	154	0	0	1,000
Entry Fees-Online Processing (In-house)	43111	0	0	0	3,000
Donated & Sponsored Awards	43202	0	0	0	1,000
TOTAL EXHIBITS REVENUE		154	0	0	5,850
HORSE SHOW REVENUE:					
Entry Horse Show 4-H	43104	0	3,000	2,004	3,800
Horse Show Stall Fees	44400	0	2,000	720	2,500
Other (Horse Show)	44600	0	0	112	200
Horse Show Insurance	44500	0	500	280	800
TOTAL HORSE SHOW REVENUE		0	5,500	3,116	7,300

Detail of Revenues

	Acct. No.	Actual 2020	Budgeted 2021	Estimated 2021	Proposed 2022
SATELLITE WAGERING REVENUE:					
TOTAL SATELLITE WAGERING REVENUE	45005	0	0	0	0
FAIR ATTRACTIONS REVENUE:					
Rodeo Admissions	46400	0	0	0	31,000
Rodeo Sponsorship	46410	0	0	0	3,000
Tractor Pull Admissions	46600	0	0	0	0
Tractor Pull Sponsorship	46600	0	0	0	0
Monster Truck Admissions	46500	0	0	0	0
Destruction Derby Admissions	46410	0	0	0	38,000
Destruction Derby Sponsorship	46401	0	0	0	0
TOTAL FAIR ATTRACTIONS REVENUE	46000	0	0	0	72,000
MOTORIZED RACING REVENUE:					
TOTAL MOTORIZED RACING REVENUE	46109	0	0	0	0
INTERIM ATTRACTIONS REVENUE:					
Performance Admissions	46209	0	0	0	0
Other Admissions (List)	46309	0	0	0	0
TOTAL INTERIM ATTRACTIONS REVENUE	46009	0	0	0	0
MISCELLANEOUS FAIR REVENUE:					
Parking- Levee	47100	125	10,000	10,015	20,000
Fair Parking/Admission	47000	0	0	0	7,500
Other Parking - Vendor	47010	8	0	0	0
Camp Fees - Vendor	47400	0	0	0	0
Stall Rentals (Fairtime)	47500	0	0	0	0
Camping Fees (Fairtime)	47700	713	0	0	0
Other (Explain)	47800	0	0	0	3,500
Sponsorships	47900	0	70,350	29,750	175,000
TOTAL MISCELLANEOUS FAIR REVENUE	47000	846	80,350	39,765	206,000
MISCELLANEOUS NON-FAIR PROGRAMS:					
Admissions	47105	0	0	0	0
Commercial Exhibits	47205	0	0	0	0
Concessions	47305	0	0	0	0
Exhibits	47405	0	0	0	0
Other (Explain)	47505	0	0	0	0
TOTAL MISC. NON-FAIR PROGRAMS	47005	0	0	0	0

Detail of Revenues

	Acct. No.	Actual 2020	Budgeted 2021	Estimated 2021	Proposed 2022
INTERIM REVENUE:					
Rental of Buildings	48100	0	0	0	0
Grounds Rentals	48200	0	0	0	0
Equipment Rentals	48300	0	0	0	1,515
Concessions Revenue	48400	0	0	0	0
Utility Fee Reimbursement	48500	0	0	0	0
Other (Specify)	48710	0	0	15	100
Bad Check Fees	48720	0	0	0	0
TOTAL INTERIM REVENUE	48000	0	0	15	1,615
TOTAL PRIOR YEAR REVENUE ADJUSTMENT:	49000	0	0	0	0
OTHER OPERATING REVENUE:					
Interest Earnings	49510	0	0	0	0
Other Operating Revenue	49500	21,365	0	0	0
Other (Explain)	49530	0	0	0	0
Gain on Sale of Asset	49540	0	0	0	0
TOTAL OTHER OPERATING REVENUE	49500	21,365	0	0	0

Detail of Expenditures

	Acct. No.	Actual 2020	Budgeted 2021	Estimated 2021	Proposed 2022
ADMINISTRATION EXPENSE:					
Salaries & Wages - Permanent	50100	0	85,000	46,164	80,000
Salaries & Wages - Temporary	50200	121,968	0	19,235	98,000
Compensated Absences Expense	50300				1,200
Employee Benefits - Employer's Share	50310			140,469	9,000
Employee Retirement					39,000
Payroll Taxes	50320	1,757	1,000	4,048	11,250
Worker's Compensation Insurance	50330	2,448	2,000	11,100	4,500
Professional Services (Contractual)	50400	244	12,000	7,162	130,000
Professional Services (Contractual)	50410	22,505	0	883	4,500
Professional Services (Contractual)	50430	4,612	0	3,594	3,000
Director's Expense	50500	0	0	0	1,000
Traveling/Training Expense - Employees	50600	620	0	2,520	25,000
Office Supplies and Expense	50700	3,703	1,000	1,641	4,500
Telephone	50800	2,795	2,700	1,861	2,500
Postage	50820	379	500	152	1,200
Dues and Subscriptions	50900	2,560	1,900	385	1,600
Insurance	51000	8,925	15,000	12,409	15,000
Insurance (General Liability)	51010	2,000	12,000	0	16,000
Insurance-Revenue Protection	51000				2,500
Other	51100	5,409	100	2,954	7,500
Unemployment Insurance (Non-reimbursed)	51200	8,973	1,000	1,883	1,500
Audit Expense	51300	6,750	5,000	11,382	7,500
Other	51400				
TOTAL ADMINISTRATION EXPENSE	50000	195,648	139,200	267,842	466,250
MAINTENANCE & GENERAL OPERATIONS:					
Salaries & Wages - Permanent	52100	0	0	3,775	
Salaries & Wages - Temporary	52200	0	0	5,142	4,500
Employee Benefits	52210				
Payroll Taxes	52220				
Worker's Compensation Insurance	52230				
Professional Services (Contractual)	52300	13,943		11,013	17,000
Rental - Land & Buildings	52400				
Rental - Maintenance Equipment	52500	94	1,500	1,951	20,000
Rental - Public Address & Intercom	52600				
Temporary Electrical Work (Contractual)	52700				
Light, Heat, Water and Power	52800	1,575	800	675	800
Maintenance of Equipment - Supplies & Expense	52900				1,000
Maint. of Bldgs. & Grounds- Supplies & Expense	53000	557	0	1,611	4,500
Trash Removal, Clean up (Contractual)	53100			1,215	
Other (Explain)	53200				
Special Repairs & Maintenance (List)	53300	1,050		89	4,000
TOTAL MAINTENANCE EXPENSE	52001	17,219	2,300	25,471	51,800

Detail of Expenditures

	Acct. No.	Actual 2020	Budgeted 2021	Estimated 2021	Proposed 2022
PUBLICITY EXPENSE:					
Salaries & Wages - Permanent	54100				
Salaries & Wages - Temporary	54101				
Employee Benefits	54110				
Payroll Taxes	54120				
Worker's Compensation Insurance	54130				
Professional Services (Contractual)	54200	0	0	0	8,000
Supplies and Expense	54300	2,317	0	1,740	7,000
Advertising	54400	8,250	0	134	84,000
Promotional Expense	54500				2,000
Public Relations Expense	54600				
Pre-Fair Events	54700				
Promotional Other Art	54800				
TOTAL PUBLICITY EXPENSE	54000	10,567	0	1,874	101,000
ATTENDANCE OPERATIONS:					
Salaries & Wages - Permanent	56100				
Salaries & Wages - Temporary	56101				
Employee Benefits	56110				
Payroll Taxes	56120				
Worker's Compensation Insurance	56130				
Professional Services (Contractual)	56200				
Supplies and Expense	56300			45	
Other (Explain)	56400				
TOTAL ATTENDANCE OPERATIONS	56000	0	0	45	0
MISCELLANEOUS FAIR EXPENSE:					
Parking Lot - % paid to contractor	57100				
Parking Lot - Salaries & Wages - Permanent	57101				
Parking Lot - Salaries & Wages - Temporary	57102				
Program Expense	57200				1,200
Safe Food Handling Fee	57220	0	0	694	3,200
Utility Fees	57300				
Exhibit Guide	57400				
Stall Expense	57500				
Sponsorships	57700				14,000
Other (Explain)	57800				
Commercial Exhibits & Concessions	57900				5,500
TOTAL MISCELLANEOUS FAIR	57000	0	0	694	23,900
EDUCATION PROGRAMS:					
Salaries & Wages - Permanent					
Salaries & Wages - Temporary	62101				4,000
Employee Benefits	57115				
Payroll Taxes	57125				
Worker's Compensation Insurance	57135				
Supplies & Expense	57205				
Publicity	57305				
Attendance	57405				
Exhibits	57505				
Wheel Barrow Expense	62300				1,500
TOTAL MISC. NON-FAIR PROGRAMS	57005	0	0	0	5,500

Details of Expenditures

	Acct. No.	Actual 2020	Budgeted 2021	Estimated 2021	Proposed 2022
PREMIUMS EXPENSE (Excluding Horse Show):					
Cash Awards	58100				
Trophies, Medals, Ribbons	58200				
Sponsored Cash Awards	58300				
Sponsored Trophies, Medals, Ribbons	58400				
Other Awards (Explain)	58500				
TOTAL PREMIUM EXPENSE	58000	0	0	0	0
EXHIBITS EXPENSE LIVESTOCK					
Salaries & Wages - Permanent	63100				
Salaries & Wages - Temporary	63101		17,900		5,000
Employee Benefits	63110				0
Payroll Taxes	63120				0
Worker's Compensation Insurance	63130				0
Judges (Contractual)	63200		1,000	3,845	6,500
Judges (Contractual)	63201		0	2,200	0
Premium	58100				0
Premiums - Trophies, Medals, Ribbons	58200	0	8,000	4,682	7,500
Other Awards Livestock	58501			182	0
Professional Services - Other (Contractual)	63300				0
Professional Services - Other (Contractual)	63301	713			15,000
Supplies and Expense	63400	147	1,000	134	20,000
Tent & Booth Rental	63500				0
Decorations	63600				0
Other (Explain)	63700				0
TOTAL EXHIBITS EXPENSE	63000	860	27,900	11,043	54,000
HORSE SHOW EXPENSE (Including Premiums):					
Salaries & Wages - Permanent	64100				
Salaries & Wages - Temporary	64101		2,500		
Employee Benefits	64110				
Payroll Taxes	64120				
Worker's Compensation Insurance	64130				
Judges (Contractual)	64200				400
Professional Services - Other (Contractual)	64300				1,800
Supplies and Expense	64400				1,000
Cattle Fees	64500				
Other (Explain)	64600				
Tent & Booth Rental	64610				
Decorations	64620				
Cash Awards	64710				
Trophies, Medals, Ribbons	64720				
Sponsored Cash Awards	64730				
Sponsored Trophies, Medals, Ribbons	64740				
TOTAL HORSE SHOW EXPENSE	64000	0	2,500	0	3,200
EXHIBITS EXPENSE NON-LIVESTOCK					
Salaries & Wages - Permanent	63100				0
Premiums	58102				0
Trophies, Medals, Ribbons	58200				0
Sponsored Awards, Ribbons	58400				0
Professional Judges	63202				300
Supplies - Indoor Exhibit	63440				0
Supplies	63400				2,500
TOTAL EXHIBITS EXPENSE	63000	0	0	0	2,800

Detail of Expenditures

	Acct. No.	Actual 2020	Budgeted 2021	Estimated 2021	Proposed 2022
HORSE RACING EXPENSE (LIVE):					
Salaries & Wages (Non Pari-Mutuel)	65100				
Salaries & Wages (Pari-Mutuel)	65200				
Employee Benefits	65210				
Payroll Taxes	65220				
Worker's Compensation Insurance	65230				
Professional Services (Contractual)	65300				
Supplies and Expense	65400				
Rental - Totalisator Equipment	65600				
Rental - Other Equipment	65700				
Other (Explain)	65800				
TOTAL RACING EXPENSE (LIVE)	65000	0	0	0	0
SATELLITE WAGERING EXPENSE:					
TOTAL SATELLITE WAGERING	65005	0	0	0	0
FAIR ENTERTAINMENT EXPENSE:					
Salaries & Wages - Permanent	66100				
Salaries & Wages - Temporary	66101				
Employee Benefits	66110				
Payroll Taxes	66120				
Worker's Compensation Insurance	66130				
Professional Services (Contractual)	66200	3,000			15,000
Supplies and Expense	66300				3,000
Rodeo	66400				40,000
Rodeo Sound	66401				7,000
Team Sorting Labor	66400				8,000
Demolition Derby Sound & Labor	66410				0
Demolition Derby Sound & Labor	66421				55,000
Grounds Entertainment	66500	10,000			130,000
Grandstand Entertainment	66610				0
Barn Area	66610				57,000
Entertainment Stages	66620				40,000
Building C	66610				
Other (Explain)	66700				
TOTAL FAIR ENTERTAINMENT	66000	13,000	0	0	355,000
MOTORIZED RACING EXPENSE:					
TOTAL MOTORIZED RACING EXPENSE	66109	0	0	0	0
INTERIM ENTERTAINMENT EXPENSE:					
Salaries & Wages - Permanent	66208				
Salaries & Wages - Temporary	66209				
Employee Benefits	66219				
Payroll Taxes	66229				
Worker's Compensation Insurance	66239				
Supplies & Expense	66309				
Concerts (List)	66609				
Other (Explain)	66809				
TOTAL INTERIM ENTERTAINMENT	66009	0	0	0	0

Detail of Expenditures

	Acct. No.	Actual 2020	Budgeted 2021	Estimated 2021	Proposed 2022
NON-CAPITALIZED EQUIPMENT EXPENSE (LIST) (Cost less than \$5,000 and life less than one year):					
TOTAL EQUIPMENT EXPENSE	72300	0	0	0	0
PRIOR YEAR OPERATING EXPENSE ADJUSTMENT:					
General Expense Adjustments	80010		0	0	0
Bad Debt Expense	80020				
PRIOR YEAR EXPENDITURE	80000	0	0	0	0
CASH SHORTAGES & OVERAGES:					
Ticket Sales	85100				
Souvenir Sales	85200				
Merchandise Sales	85500				
Other (Explain)	85900				
CASH (OVER)/UNDER	85000	0	0	0	0
DEPRECIATION EXPENSE: (From: Sch 7 / To: Pg. 1)	90000		0	0	0
*PENSION EXPENSE: (To: Pg. 1)	96000				
OTHER OPERATING EXPENSE:					
Loss on Sale of Asset	94010				
Other Expenses					
TOTAL OTHER OPERATING EXPENSE	94000	0	0	0	0

*For budgeting purposes, the expected employer's contribution made toward the pension plan for the year should be placed into Pension Expense. Employer's share of the contributions made should not be reflected in the operating expenditures.



CALIFORNIA DEPARTMENT OF
FOOD & AGRICULTURE

Karen Ross, Secretary

November 9, 2021

Mike Albiani, Acting CEO
52nd DAA, Sacramento County Fair
1600 Exposition Blvd.
Sacramento, CA 95815

Dear Mr. Albiani:

I am pleased to announce the disbursement of funds under the Targeted Support Program, which was implemented using the \$50 million appropriation for operational support of the Network of California Fairs that was part of the 2021/22 State Budget.

The Targeted Support Program received a significant number of applications, which allowed the Fairs and Expositions Branch (F&E) to assess not only your fair's financial condition but also the fair industry's financial condition. Fortunately, based on the information collected, the resulting perspective is that most of the industry has relatively stabilized from the significant impacts of the pandemic. The stabilization of the industry gave F&E added flexibility in developing a distribution plan that can provide meaningful support for your fair.

F&E is exercising its authority under Business and Professions Code § 19620.2 to provide allocations towards operational support for your fair. Please find **\$285,000** enclosed with this letter.

If you have any questions, please contact me at 916-900-5365 or via email at mike.francesconi@cdfa.ca.gov.

Sincerely,

Mike Francesconi
Branch Chief

Enclosure



Pamela Fyock

From: Anater, Kenneth@CDFA <kenneth.anater@cdfa.ca.gov>
Sent: Monday, November 15, 2021 2:00 PM
To: Pamela Fyock
Subject: RE: ethics cert bullshit

Thanks Pam, I have confirmed all are in compliance and will inform our Fiscal staff that all of the required training has been completed. As long as no other additional information must still be submitted, your allocation should be sent to you in three to four weeks once the allocation paperwork has been sent to HQ.

Ken

Ken Anater
CDFA Fairs & Expositions
(916) 900-5073
Kenneth.anater@cdfa.ca.gov

From: Pamela Fyock <pamelafyock@sacfair.com>
Sent: Monday, November 15, 2021 10:38 AM
To: Anater, Kenneth@CDFA <kenneth.anater@cdfa.ca.gov>
Subject: FW: ethics cert bullshit

CAUTION : [External Email] - This email originated from outside of our CDFA organization. Do not click links or open attachments unless you recognize the sender and know the content is expected and is safe.

Ken attached is Jim Perham's certificate for the ethics. All directors are now in compliance. When can we expect our check?

Thanks, let me know if you need anything else. Pam

Pamela Fyock

CEO, Sacramento County Fair
pamelafyock@sacfair.com
916-263-2975 (office)
602-743-9990 (cell)
916-263-2973 (fax)





December 3, 2021

Pam Fyock, CEO
52nd DAA/Sacramento County Fair
1600 Exposition Blvd.
Sacramento, CA 95815

Dear Pam,

We are pleased to provide the 52nd DAA/Sacramento County Fair with estimated fees for the purpose of participating in the General Liability Risk Sharing Program administered by the California Fairs Services Authority (CFSA) for the 2022 coverage year.

Annual General Liability fees are calculated by multiplying the base fee (which is determined by Fair Classification) by a loss history modification ratio. For fairs that have left the risk pool and are now looking at returning, we use a 100% modification factor initially unless there is a poor loss history prior to re-admittance. The estimated fee for the 52nd DAA/Sacramento County Fair for 2022 is \$10,681 (base fee) X 100% (modification factor) = \$10,681 annual fee. You may choose between a lump sum annual payment at a 1% discount, or you can pay 12 monthly installments. CFSA has a generous 60-day aged accounts receivable policy.

Please note that when the 2021 Actuary Report is received in 2022, CSFA staff will review the data and make a recommendation for final 2022 fees to the CFSA Board of Directors at the April 2021 board meeting. It is possible that base rates will increase or decrease at that time. We notify all risk pool members about the board meeting and the final fee recommendation.

2022 General Liability Risk Sharing Program Coverage

Primary Protection Summary

CFSA Memorandum of Coverage and Certificate of Coverage

Coverage A:

\$100,000 Bodily Injury and Property Damage combined single limit per occurrence, including defense costs

Coverage B:

\$100,000 Personal Injury combined single limit per offense, including defense costs

Coverages C and D:

\$100,000 Public Officials Errors and Omissions Liability and Employment Practices Liability, combined single limit per wrongful act, including defense costs

1776 TRIBUTE ROAD, SUITE 100
SACRAMENTO, CA 95815
PHONE: (916) 921-2213 | FAX: (916) 646-1238

WWW.CFSA.ORG

Coverages A, B, C and D Combined:

\$100,000 Coverages A, B, C and D combined for any one occurrence, offense or wrongful act because of Bodily Injury, Property Damage, Personal Injury, Public Officials Errors and Omissions Liability or Employment Practices Liability, or any combination thereof.

Deductibles - Coverage D: \$10,000 per wrongful act because of Employment Practices Liability, including defense costs.

Excess Protection Summary

PRISM General Liability 1 Program Memorandum of Coverage (#PRISM-PE 20 EL-116)

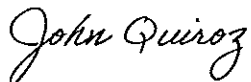
\$24,900,000 ultimate net loss as the result of any one occurrence because of Bodily Injury or Property Damage, or any one offense because of Personal Injury, or any one Wrongful Act because of Public Officials Errors and Omissions or Employment Practices Liability, or any combination thereof.

Limits apply separately to each member in the Program.

The CFSA Board of Directors approved the re-entry of the 52nd DAA/Sacramento County Fair to the CFSA General Liability Risk Sharing Program for the 2022 coverage year at its December 1, 2021, board meeting, with the condition that the fair remain a participant in the program for a minimum of five years.

Please confirm your participation in the 2022 CFSA General Liability Risk Pool Program by filling out the attached fee worksheet selecting the payment option that works best for your fair and returning it to me at jquiroz@cfsa.org . If you have any questions, please contact me at 916-263-6180.

Sincerely,



John Quiroz
Deputy Executive Director

Fee Assessment
Estimated Fee 2022
General Liability Fee Calculation for Calendar Year 2022

52nd DAA, Sacramento County Fair

Your Base Fee (2022)	Same for each Fair in your class	10,681.00
Losses	Losses from 2016 - 2020	0.00
Capped Losses	Capped Losses from 2016 - 2020	0.00
Fees Paid	Fees Paid from 2016 - 2020	0.00
2022 Estimated Modification Ratio	Modification Ratio	100%
2022 Estimated Liability Fee	Base Fee x Modification Rate	10,681.00
2021 Liability Fee	For comparison only	0.00
2021 Modification Ratio	For comparison only	0%
2022 Auto Fee	Optional Auto Liability Insurance (non-profits)	0.00

PAYMENT PLANS

Any questions please call Raechelle Gibbons at 916-263-6143 or
email address: rgibbons@cfsa.org

☐ 1

Lump-Sum Payment:

2022 Estimated General Liability Fee	\$10,681.00
Less payment discount (1% if lump sum payment is received by January 25, 2022)	(\$106.81)
TOTAL LUMP SUM FEE WITH DISCOUNT PAID JAN. 25, 2022	\$10,574.19

☐ 2

12 Monthly Installment Payments:

2022 Estimated General Liability Fee	\$10,681.00
12 MONTH INSTALLMENTS JANUARY-DECEMBER 2022	\$890.08
(12 payments are due the 25th of each month beginning January '22 thru December '22)	



CFSA Has Public Entity Fairs Covered

The California Fair Services Authority (CFSA) was formed for the specific purpose of providing general liability insurance for California's fairs via a risk pool at a time when commercial insurance for the fairs was priced out of range or even completely unavailable. At the same time, CFSA created a workers' compensation risk pool and assumed all of the California fairground liabilities from the State Compensation Insurance Fund. In its 30-plus-year history of protecting California's public entity and nonprofit fairs, CFSA has been an industry leader and partner, always putting the safety of the fair staff and the fair-going public first.

When the fairs' state funding support was eliminated, CFSA lowered general liability fees by 5% and held them there for another year, regardless of the performance of the pool. CFSA stepped up to keep the California Fairs Financing Authority (CFFA), a joint powers authority formerly known as the California Construction Authority, operating so that California fairgrounds could do public works construction projects correctly and on time. Until June of 2011, CFFA received 100% of its operating funding from the State. And when the staff at CDFA's Division of Fairs & Expositions (F&E) was reduced from 22 to 2.5 staff members, CFSA came forward again, at no cost to members or to F&E, to carry on critical professional, advisory, and training needs.

CFSA's mission is to deliver efficient and cost-effective risk management, risk pooling insurance, and business solutions through a flexible and responsive alliance with our members. To that end, CFSA provides a customized general liability program with provisions specific to the operations, activities and events held at district agricultural association (DAA), county and citrus fruit fairgrounds. Moreover, as fairgrounds' needs have changed over time, CFSA has responded with programs that are both customized and inclusive of newly created events as well as traditional favorites. A detailed list of items covered in the CFSA general liability program is provided in Attachment A.

As a joint power authority, CFSA is owned by its members. The pool reserves belong to the members, and CFSA is the steward of those funds. CFSA is governed by a seven-member board of directors, including five seats elected from within the fairground membership. Two additional seats are appointed, one by the Secretary of the California Department of Food & Agriculture (CDFA) and the second is a public member appointed by the CFSA board itself.

CFSA's in-house claims handling team has in-depth knowledge of California fairgrounds, state laws, regulations, and immunities as they relate to claims against California's public entity fairgrounds. CFSA's proactive services, from staff training to

1776 TRIBUTE ROAD, SUITE 100
SACRAMENTO, CA 95815
PHONE: (916) 921-2213 | FAX: (916) 646-1238

WWW.CFSA.ORG

fairgrounds premises reviews to contract insurance review, prevent numerous incidents from occurring at fairgrounds and/or claims being filed against fairgrounds. Accidents, however, can happen on even the most safety conscious fairgrounds, and when they do, CFSA is there to help its member fairgrounds make their way through the general liability claim process. This includes keeping members up to date on claim developments and progress.

CFSA's pool fees are based on the performance of the pool (fair members) and not the reactions of the commercial insurance industry to disasters or claims trends. CFSA has never cancelled any fairground's coverage due to the number or severity of claims filed against that fairground.

Member Benefits – Above and Beyond Expectations

More than 38 million people attend fairs and events on California's fairgrounds each year. The mixture of people, animals and other fair-time activities makes safety a top priority, and yet, accidents can happen. As fairgrounds become more and more engaged and active in their local communities, and the amount of planned public contact increases, so will the potential for risk and exposure. The following programs are part of the CFSA General Liability Program and member benefits which are offered at *no additional cost*.

Risk Control Services

CFSA provides a customized, aggressive, and proactive year-round risk control program that uses analysis of each pool member's loss/claims history and facility inspections as a foundation for each member's risk program development. Serving the fairgrounds as advisors, consultants and educators, our risk control specialists spend an average of 600 hours a year working on fairgrounds with pool members to identify and correct health and safety risks that could affect employees and fairground visitors.

Pool member fairs save thousands of dollars each year through this program, which is covered by annual risk pooling program fees. Training programs also help members meet state-mandated training requirements and safety protocols, including such areas as Hazardous Communications, forklift certification, CPR, fall protection and much more.

In addition, CFSA coordinates with other public agencies that regulate public and employee safety on California fairgrounds including the State Fire Marshal and the California Department of Industrial Relations Division of Occupational Safety & Health (Cal/OSHA). Training either takes place onsite at a member fairgrounds or digitally through our Vector Solutions program. CFSA provides an average of 500 CPR/First Aid and heavy equipment operator proficiency certifications each year. Since the CFSA equipment certification program began in 2003, there has not been a single claim filed related to forklift or boom lift equipment operations.

Along with staff training, the CFSA risk control program includes fairgrounds site reviews, both pre-fair and fair time. These facility reviews look at both general liability and workers' compensation exposures, and our specialists work closely with fairground management and staff on correcting the high-risk exposures. Site reviews are comprehensive and include inspection of conditions of the buildings and grounds as well as checking to see if the fairground's Injury Illness and Prevention Program is up to date and being implemented. Temporary concession and commercial booth operations are inspected for compliance with State Fire Marshal regulations as well as workplace safety requirements under the jurisdiction of Cal/OSHA.

This program was recognized with an award of excellence by our excess carrier PRISM in 2020 for our COVID-19 Exposure Control Plan developed for member fairs at the outset of the pandemic.

Contract Certificate of Insurance Reviews

One of the key components of the CFSA general liability program is our contract certificate of insurance review service, provided to all general liability pool members. Pool members entering into contracts that meet criteria specified by CFSA are required to send copies of the contracts and accompanying certificates of insurance to CFSA for a thorough review of the risk transfer language requirements mandatory in every fair contract. CFSA currently has a contract with CDFA to review all district agricultural association hazardous contracts and any contracts with changes to indemnification language.

This risk transfer language protects the fair, other fairs, the State of California, counties and the citrus fruit fairs by enabling CFSA to tender (transfer) numerous claims to the most immediate responsible party. All entities doing business with a member fairground are required to include the mandatory indemnification language and to show proof of set limits of general liability coverage as the primary insurance. When a claim is made and it is because of the action of a carnival, vendor, entertainer, tenant or other exhibitor, the claim is tendered to the insurance company of the entity responsible. The member fairground is protected as an additional insured party under the outside insurance. CFSA claims staff monitors any litigation involving a member fairground.

This program was recognized with an award of excellence by our excess carrier PRISM in 2019.

CFSA's Special Events Pool Program

CFSA administers a special events liability program for all California fairgrounds. Sold by individual fairs to vendors and renters, this program gives California fairgrounds the ability to do business with all entities and to comply with insurance requirements when the vendor or renter does not have their own insurance coverage.

The paperwork for this program is minimal, however, CFSA rebates 5% of the fees collected by each CFSA member fairground back to the individual fairground to help cover fair administrative costs associated with the program. Fairgrounds that are not

members of the general liability or workers' compensation pool programs are able to use the program, but do not receive a rebate.

Master Insurance List

Contractors and vendors doing frequent business with CFSA member fairgrounds are encouraged to send current insurance certificates to CFSA for approval and inclusion on the Master Insurance List. This master list establishes proof of liability insurance for contractors and vendors for every new fairground contract executed during a one-year period. CFSA updates and publishes the list monthly beginning in February of each year and the list is provided as a courtesy for the fairgrounds and the contractors/vendors. There is no charge to receive or to be included on the list.

CFSA assumed responsibility for publishing the Master Insurance List from CDFA's Division of Fairs & Expositions in 1993 and expanded the list to include carnivals and hazardous event/activity contractors and vendors in addition to nonhazardous event/activity contractors and vendors. The most recent list included more than 250 businesses that contract with California fairgrounds.

Member Access to Additional Coverage for Members' Unique or Specialized Programs

On behalf of its members, CFSA facilitates members securing additional coverage for unique specialized fair programs. The additional coverage is offered to only those fairs who engage in specific hazardous activities and events and to fairs who desire the additional coverage. CFSA assists in securing the coverage and administering claims.

Hazardous Special Events Coverage

CFSA offers hazardous special events commercial coverage for rodeos and motorized events that are sponsored by California fairgrounds. This affordable and critical program puts a layer of coverage between the fairgrounds' general liability coverage and the event for the specific members who host these types of hazardous events.

Group Livestock Exhibitor Coverage

Under the CFSA Special Events Program, a fairground can purchase affordable general liability coverage for livestock exhibitors. This coverage is secondary coverage for any damages caused by the livestock exhibit to fair patrons or their property. The coverage is also available to the individual exhibitors through the fair if the fairground does not purchase the group coverage.

CFSA and California's Fairs: We Are Better Together!

Over the years CFSA has become the go-to agency for easily accessible, reliable, and professional assistance for pool member fairs, CDFA and industry organizations.

We understand that all fairgrounds are watching budgets closely, especially during the COVID-19 pandemic, and general liability coverage costs are important. We are also

aware that CDFA is requiring all DAAs to have a minimum of \$25 million per occurrence liability coverage. We stand by our coverage limits due to the current general liability market impacting public entities in the state of California in recent years. While \$25 million per occurrence sounds like a lot of coverage, based on recent public entity verdicts and settlements it unfortunately is not too much.

To help demonstrate the value of CFSA General Liability Coverage, we are providing the following attachments for your review:

- Attachment A: Detailed list of activities covered in the CFSA general liability program.
- Attachment B: Things that all California fairgrounds should consider when choosing general liability coverage and some specifics about the CFSA general liability program.
- Attachment C: Risk Control Program Details

ATTACHMENT A

General Liability Pool Program Coverage Detail

The CFSA general liability risk pooling program provides up to \$25 million per occurrence per fair for all fairgrounds related activities from E.coli contamination to Americans with Disabilities Act claims. If a fairgrounds wants to have a cattle drive down Main Street, that's covered! And coverage includes defense costs.

In comparison, liability coverage limits for other California public entities in risk pools are in the same neighborhood or higher than CFSA's new coverage limit, demonstrating the evolution of the risk pool industry:

- Most California schools liability limits are \$55 million per occurrence
- Most California counties limits are \$25 million per occurrence
- Bay Area cities limits are \$29 million per occurrence
- Parks and recreation district limits are \$25 million per occurrence
- Water district limits are \$60 million per occurrence

The coverage can be categorized in four protection categories: Bodily Injury and Property Damage, Personal Injury, Public Officials Errors & Omissions Liability and Directors & Officers Liability coverage for nonprofit fairgrounds, and Employment Practices Liability.

Protection A: Bodily Injury and Property Damage

"Bodily injury" means bodily harm, sickness, disability or disease sustained by a person, including death resulting from any of these at any time. Bodily injury includes mental injury, mental anguish, humiliation, shock or death if resulting directly from bodily injury. Bodily injury shall include care, loss of services, loss of consortium, or death resulting at any time from the bodily injury.

"Property damage" means (1) physical injury to, or destruction of, tangible property which occurs during the coverage period, including resulting loss of use; or (2) loss of use of tangible property which has not been physically injured or destroyed provided such loss of use is caused by an occurrence during the Memorandum Period. This covers damage to property not owned, leased or rented by the fairgrounds.

Examples that are relevant to the California Fair industry:

This is not an all-inclusive list but rather examples of what has happened and was covered or could conceivably happen on a California fairgrounds.

- Injury caused by a slip, trip and/or fall.
- Inadvertent contact with fairgrounds premises that leads to injury, i.e. a crack in the pavement or sidewalk, missing components to bleachers, slipping while walking.

- Jumping off platforms.
- Picnic benches or tables failing or collapsing.
- Other fair equipment failure that causes bodily injury or property damage.
- E.coli and other disease transmission.
- Livestock panels that fall on a person causing injury.
- Interaction with livestock, such as a livestock animal knocking down a patron, or a patron being bitten by an animal.
- Gates, doors that malfunction causing injury and/or property damage.
- Stage collapse.
- Food poisoning.
- Falling off curbs
- Inadequate event security.
- Tree limbs falling on patrons or property.
- Light poles falling on cars.
- Mass casualty at an event.
- Injury caused by shots fired.
- Infrastructure/utility failure or exposure that leads to bodily injury or property damage.
- Crowd control issue that leads to personal injury or property damage.
- Injury to a fair guest caused by fair activity. Fair guests being in the wrong place at the wrong time.
- Damage to stored vehicles or equipment.
- Maintenance staff causing damage to other's property (blowers, fire damage, electrical surges)
- Damage caused by flooding caused by fair negligence.
- Fair negligence that leads to property damage or theft.
- Infrastructure failure that leads to damage of other's property.

Protection B: Personal Injury

“Personal injury” means injury, including consequential bodily injury or property damage, arising out of one or more of the following offenses:

- (a) false arrest, detention or imprisonment or malicious prosecution;
- (b) the publication or utterance of libel or slander, including disparaging statements concerning the condition, value, quality or use of real or personal property, or publication or utterance in violation of rights of privacy;
- (c) wrongful entry or eviction, or other invasion of the right of private occupancy;
- (d) assault and battery, not committed by, at the direction of or with the consent of the covered party, unless committed or directed for the purpose of protecting persons or property from injury or death;
- (e) discrimination based upon race, religion, nationality, national origin, color, creed, sex, sexual orientation, age, nature of employment, or disability, but excluding unlawful discrimination intentionally committed by, at the direction of, or with consent of the covered party.

Examples that are relevant to the California Fair industry:

This is not an all-inclusive list but rather examples of what has happened and was covered or would conceivably could happen on a California fairgrounds.

- Americans with Disability Act claims.
- First Amendment claims, such as animal activist protests, and other Freedom of Expression activities.
- Actions of fair security that are alleged to be discriminatory.
- Dress code violations – wearing of gang colors.
- Leafletting in parking lots.
- Discrimination claims based on national origin.
- Discrimination claims involving vendors, renters, exhibitors.
- Exposures of being a public entity, public space and/or a public event.

Protection C: Public Officials Errors & Omissions and Directors & Officers Liability (nonprofit fairs)

Public officials errors and omissions liability means any actual or alleged error or misstatement or act of omission or neglect or breach of duty including misfeasance, malfeasance or nonfeasance by the covered parties in the discharge of their duties with the public entity individually or collectively, or any matter claimed against them solely by reason of their being or having been covered parties.

Examples that are relevant to the California fair industry:

This is not an all-inclusive list but rather examples of what has happened and was covered or could conceivably happen on a California fairgrounds.

- A fair board of directors making a decision that causes an economic loss to a member of the public, vendor, exhibitor, or tenant.
- Protection of board members to prevent claims that they are personally liable for via decisions made by the board.
- Protection of board members from the liability of one board member acting outside his/her scope as a board member.
- Violations of the Brown Act or Bagley Keene open meeting laws that result in wrongful termination or a claim of public officials' errors and omissions.

Protection D: Employment Practices Liability

"Employment practices liability" means liability, except as related to property damage, personal injury, or public officials' errors and omissions liability, arising out of an actual or alleged wrongful act in connection with any person's prospective employment, actual employment or termination of employment by a covered party, including but not limited to wrongful termination, discrimination or sexual harassment.

Examples that are relevant to the California fair industry:

This is not an all-inclusive list but rather examples of what has happened and was covered or could conceivably happen on a California fairgrounds.

- Wrongful termination of a fair CEO or other fair staff.
- Sexual harassment claims.
- Failure to promote a staff person.
- Failure to follow civil service rules.
- Discrimination in hiring and promoting practices.

Note: This Attachment is intended as a handy general reference for your convenience. The CFSA General Liability Memorandum of Coverage should be used to determine the precise coverages, conditions, limitations and definitions for the CFSA General Liability Program.

ATTACHMENT B

Things to Consider in Your General Liability Coverage

Note: This Attachment is intended as a handy general reference for your convenience. The CFSA General Liability Memorandum of Coverage should be used to determine the precise coverages, conditions, limitations and definitions for the CFSA General Liability Program.

THINGS TO CONSIDER	WHAT CFSA COVERS
Is there a difference between general liability coverage for a fairgrounds operated by a private entity versus a public entity?	Yes. Public entity fairgrounds are subject to general liability claims related to civil rights. CFSA's general liability program is designed for California public entity fairgrounds and includes coverage for civil rights violations (e.g. Americans with Disabilities Act, freedom of expression, discrimination on the basis of race, gender, religion, national origin). Not all commercial policies include civil rights coverage. If a public entity fair has a civil rights claim and their general liability insurance coverage does not include civil rights, the fairgrounds will have to pay for the defense and any settlement and/or jury award related to a civil rights claim out of its operating budget.
CFSA's general liability program includes \$25 million "per occurrence." What does that mean?	The term "per occurrence" refers to the total amount the insurance company/pool will pay per fairground per incident that occurs during the policy term.
What does "aggregate" mean?	The term "aggregate" means the total amount the insurance company will pay for multiple claims over the course of one policy term, which is often one year. For example, if the coverage is for \$1 million per occurrence with \$5 million in aggregate that means the insurance coverage runs out after a total of \$5 million is paid out in claims in one coverage year. CFSA's coverage has no aggregate limit.
What are the coverage limits for each fairground participant in the CFSA general liability risk pool?	CFSA's current coverage limit for general liability is \$25 million per occurrence per fairground. There is no aggregate limit in the CFSA coverage.

What does "Self-Insured Retention" mean?	The CFSA general liability risk pool is responsible for paying the first \$100,000 of every claim.
Are there areas of Employment Practices coverage that only public risk pools can provide to members?	Yes. Because CFSA is a public entity, a Joint Powers Authority, risk pool, CFSA provides coverage for emotional distress or mental anguish damages, which are common claims in public entity employment practices claims. Under California law it is against public policy for private insurance companies to cover "intentional acts" such as discrimination and often employment practices claims are intricately related to "intentional acts."
Why is CFSA's general liability coverage limit set at \$25 million per occurrence?	<p>While, thankfully, there has not yet been a general liability claim against a CFSA participant fairground that has exceeded \$10 million the potential is there. Other public entities in California have similar coverage limits:</p> <ul style="list-style-type: none"> • Most California schools' liability limits are \$55 million per occurrence • Most California counties limits are \$25 million per occurrence • Bay Area cities limits are \$29 million per occurrence • Parks and recreation district limits are \$25 million per occurrence • Water district limits are \$60 million per occurrence <p>Jury verdicts in California premises liability cases have included \$55 million against an apartment complex for security's failure to break up a gang fight that resulted in the shooting of a teenager; \$9.9 million verdict for a 70-year-old who slipped and fell in a restaurant; \$14.3 million for the electrocution of an electrician at a construction site.</p>
Does the CFSA general liability program cover all sporting events, even rodeos?	CFSA requires all fairgrounds to either purchase or have their event promoter provide \$3 million to \$5 million in primary coverage for sporting events such as rodeo and motorized racing. The CFSA

	general liability program covers up to \$25 million above the primary coverage.
Is there an extra fee for terrorism coverage in the CFSA general liability program?	No. Acts of terrorism are covered by the CFSA general liability program, it is not a separate, optional coverage with an additional fee. Fairgrounds, like all operators of large public facilities should have terrorism coverage which includes the risk of mass shootings. The CFSA program covers this risk.
Are there any areas of fairgrounds operations that the CFSA general liability program does not cover?	<p>Yes, the CFSA general liability program does not cover:</p> <ul style="list-style-type: none"> • Contract disputes • Property damage to real property owned, rented or leased by the fair • Property damage to personal property owned, rented or leased by the fair • Any claim arising out of ownership, maintenance, loading or unloading, use or operation of any aircraft, airfields, runways, hangars, buildings or other properties related to aviation activities. • Any claim arising out ownership, maintenance, loading or unloading, use or operation of any automobile • Any claim arising out of or in any way connected to eminent domain, condemnation procedures, or inverse condemnation. • Any claim or liability arising out of the failure to supply a specific amount of electrical power, fuel or water or arising out of the interruptions of the electrical power, fuel or water supply. • Any claim arising out of ownership, maintenance, loading or unloading, use or operation of any watercraft • Any claim related to pollution • Any claim related to asbestos • Any claim that requests a court order and no monetary damages (e.g. a writ case compelling a fairground to produce public

	documents under the California Public Records Act.)
--	--

ATTACHMENT C

Risk Control Program Details

CFSA Risk Control fair time training and inspection visits typically include:

- Temporary and volunteer staff safety orientations.
- Temporary electrical installation inspections.
- Temporary bleacher equipment inspections.
- Parking site inspections for surface conditions, lighting and security.
- Fire protection equipment inspections for equipment availability; proper signage, certification and installation.
- Walking surface inspections focusing on general conditions and trip and fall prevention.
- General exhibitor and concessionaire booths including material storage inspections, proper storage of combustible materials.
- Review of Cal/OSHA required written occupational health and safety programs: emergency disaster evacuation plans, fire plans, onsite asbestos (as needed) and verification of periodic exercises or drills.
- Fire protection inspections including alarm systems, sprinkler systems, standpipe and hose systems, and fire extinguishers.
- General work environment inspections including walkways, elevated surfaces (platforms), stairs and stairwells, floor and wall openings, exit doors.
- Review of hoisting equipment.
- Required information postings including OSHA 300 Log.
- Hazard communication standards including review of the written program, personnel training and Material Safety Data Sheet maintenance.
- Emergency planning (fair staff).
- Safety meetings including review of safety meeting history, training logs and meeting subject content.
- Consumer Protection Program: handwashing stations in animal and food areas

CFSA Risk Control Provides Title 8 Cal/OSHA Workplace Safety Program Development -

- Forklift operator certification
- First Aid – CPR and AED (automated external defibrillation)
- Ergonomics
- Slips, Trips and Falls Prevention
- Back Injury Prevention
- Workplace Violence Awareness
- Your Heart Matters

CFSA Year-Round Training Programs include:

- COVID-19 Exposure Control Plan
- Injury and Illness Prevention Program
- Hazardous Communications
- Heat Illness Prevention
- Personal Protective Equipment
- Special Event Management and Planning
- Emergency Planning
- Fire Safety and Extinguisher Training
- Fall Protection
- Electrical Safety
- Back Safety and Material Lifting Training
- Understanding Blood Borne Pathogen Hazards
- Contract Insurance Certificate Review
- Ergonomics in the Office

California Fair Services Authority
Board of Directors

General Liability Program Operating Memorandum #21-01
EFFECTIVE NOVEMBER 6, 2021

Issued pursuant to the "Memorandum Stating the Terms and Conditions of the General Liability Risk Sharing Program Administered by the California Fair Services Authority," adopted July 1, 2021 (hereinafter "MOC").

Section 1. Minimum Liability Limits for Fair Contractors and Facility Users

All fairs participating in the CFSA general liability program described by the MOC must insure that fair contractors and other users of fair facilities maintain the following minimum per occurrence limits of commercial general liability coverage for the following activities:

HAZARDOUS ACTIVITIES AND EVENTS

ALL contracts must be sent to CFSA for review and verification of insurance requirements

MINIMUM GENERAL LIABILITY INSURANCE LIMITS

*-----Note: * indicates that participant waivers are required-----*

\$5,000,000

- Fair time Carnival Rides
- **Motorized Events***: Automobile races, drifting exhibitions, truck rodeos, tractor/truck pulls, destruction derbies, RV destruction derbies, mud bogs, mud racing, car crunches, monster truck shows, automobile thrill shows, figure 8 racing, stock car racing, tuff trucks, boat races, autocross, dirt racing, oval track, sprint cars/410 sprints, modified, super stock, mini-stock, dwarf cars, micro lights, endure, pro stock.
- **Freefall Attractions***: Elevated jumps involving airbags.

\$3,000,000

- **Motorized Events***: motorcycle racing, flat track motorcycle racing, arena-cross, freestyle motocross, motorcycle thrill shows and stunt teams, ATV, sand drags, go karts, snowmobile races, quarter midget races, golf cart races, Redneck Roundup (ATVs), lawnmower races.
- **Rodeo Events***: All Types with a paid gate and any Rough Stock Events such as Bull Riding, Bareback, Saddle Bronc, or Mutton Busting

\$2,000,000

- **Rodeo Events*:** All Types without a paid gate and with any Rough Stock Events such as Bull Riding, Bareback, Saddle Bronc, or Mutton Busting
- **Interim Carnival Rides**
- **Fair time Kiddie Carnival Rides:** Up to 6 kiddie rides (includes book-in rides)
- **Concerts:** Over 5,000 attendees
- **Mechanical Bulls***
- **Extreme Attractions*:** All Types, including but not limited to bungee attractions, ejection seats, sky scrapers, Trampoline Things/quad jumpers, zip line or similar attractions requiring a Cal/OSHA permit to operate
- **Motorized Events*:** Car jumping contests/demonstrations of hydraulic modifications to automobiles.
- **Rave Type Events:** Any dance or concert which extends beyond midnight
- **Simulators***

\$1,000,000

- **Animals:** All Types of Events, including but Not limited to circuses, pony and other animal rides, petting zoos, pig (or other animal) races, dog training/obedience classes, horse-drawn refuse collection, wild/exotic animal exhibits and horse-pulled hay rides. Doesn't include livestock shows or sales.
- **Athletic Events, Competitive*:** All Types
- **Building & Grounds Maintenance:** Janitorial service, cleaning service, window cleaning, carpet cleaning, landscaping, tree trimming/removal
- **Chainsaw/Wood Carving/Lumberjack Competitions***
- **Construction and Improvements on Buildings:** Major repair, major alterations, new construction of buildings, excavation, drilling, and demolition, modular buildings, portable structures
- **Drones/Remote control flying objects**
- **Elevator Maintenance**
- **Entertainment:** Trapeze, spin wheel or acrobat acts, tight rope, boxing matches, wrestling, strolling acts, stilt walkers, clowns and hypnotists
- **Equestrian Events*:** All Types of Events, including but not limited to horse

\$1,000,000 cont.

show, jousting, cutting and reining horses, training and lessons, gymkhana, team penning, team roping, barrel racing, dressage and show jumping

- **Equipment Rental:** Sound/lights, tents, pipe and drape, bleachers, portable stages, temporary/portable trailer rental and scaffolding
- **Festivals**
- **Fireworks Exhibitions**
- **Hazardous Substances:** Treatment, removal, storage or any other handling of any hazardous substances, including but not limited to toxic and petroleum waste and asbestos
- **Haunted Houses**
- **Medical Services:** EMT, first aid services, and ambulance services
- **Miscellaneous:** Dunk tanks*, tattooing*, body piercing*, parachuting*, bouncy balloons, bounce houses*, trampolines*, rock climbing wall*, foam parties, water wars, water balloon fights*, circus, wheelchair and stroller rental, water bobbles*, soccer bobbles*, ice skating*, face painting, henna tattoos
- **Motorized Events:** bus training*, ride and drive*, auto research, trackless train, ATV training*, golf carts (general use), car cruise, tow trucks, ladder truck training*, heavy equipment training*, parking lot/street sweeping, car control clinic*, clown cars, parades, bus/shuttle service, ambulance/fire/police, electric wheelchair/scooter, tractor parade.
- **Parking Services**
- **Parades**
- **Rodeo Events*:** All types of Events without any Rough Stock Events, but including barrel racing, penning, and roping
- **Sanitation Services:** Portable restrooms/showers, portable toilets/port-a-potties and hand-washing stations
- **Security Services:** Public and private
- **Sewer, water and other underground utilities (electrical, fiber-optic communications and gas lines) lines—maintenance and/or installation.**
- **Sport Activities*:** Rifle or gun club activities, archery practice, skeet range, golf driving ranges, laser tag, paint ball, obstacle courses, and axe throwing
- **Spraying:** Pest control, fumigation, crop or agricultural spraying and

\$1,000,000 cont.

application

- **Transporting:** All Types, including but not limited to helicopter*, stage coach, horse-pulled hay rides, trackless trains, hot air balloons*, any aircraft (fixed wing or rotor)*, watercraft, livestock hauling (for auction) and armored car service.
- **Wheeled Events*:** All Types, including but not limited to roller derbies, roller skating, in-line skating, hockey, scooters, skateboards, hover boards, bicycles, Segways, and BMX events

NON-HAZARDOUS ACTIVITIES AND EVENTS (not fair sponsored) All contracts meeting these criteria over \$15,000 must be sent to CFSA for review and verification of insurance requirements

MINIMUM GENERAL LIABILITY INSURANCE LIMITS:

\$2,000,000

- **Swap Meets/Flea Markets:** Markets held two or more times per calendar year

\$1,000,000

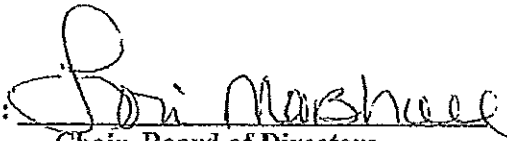
- **Antique Shows**
- **Arts/Crafts**
- **Auctions other than Animal**
- **Auto Sales (no auto coverage)**
- **Barbecues/Picnics**
- **Bingo**
- **Birthday Party/ Banquets/Receptions/Social Gatherings**
- **Business Services:** Accounting services, Advertising agencies, Booking agencies, Public Relations, Fair consulting services, Admissions Management, Computer/IT Services, Exhibitor entry and auction data processing, and other similar services.
- **Car Shows/Motorcycle Shows (no performances/demonstrations/stunts)**
- **Commercial Concessionaires/Exhibitors**
- **Concerts (Non-Rave Events):** Under 5,000 attendees
- **Conventions**
- **Dances:** Under 5,000 attendees
- **Dog Shows:** No training/obedience classes

- **Equestrian Facility Use**
- **Exhibitions**
- **Films/Lectures**
- **Funerals/Memorial Services**
- **Food and Beverage Concessionaires**
- **Gaming Tournaments**
- **Graduation Ceremonies**
- **Health Fairs**
- **Horse/Livestock Symposiums**
- **Horse Shows:** (non-competitive or competitive horse shows being operated under State rules, United States Equestrian Federation (formerly American Horse Shows Association/AHSA) rules or Breed Association rules
- **Independent Animal Exhibitors**
- **Instruction Classes/Aerobics (no participant coverage)**
- **Job Fair/Business Expo**
- **Livestock & Horse Sales**
- **Meetings:** Social organizations, Fraternities, Business, Charity, Non-Profit
- **Group overnight camping**
- **Palm Readings/Tarot Card Reading/**
- **Performances/Theatrical (NOT CONCERTS) and Practices**
- **Retreats**
- **Reunions:** Family or class
- **Rummage/Garage Type Sales**
- **RV Rallies**
- **Seminars/Speaking Engagements/Training Sessions**
- **Shows:** All Types, including but not limited to boat shows, car shows, coin shows, craft/ceramic shows, doll shows, flower shows, gem and mineral shows, gun shows, home and garden shows, RV show and sales, sports card shows, and trade shows.
- **Small Animal Show & Clinic**
- **Swap Meets/Flea Markets:** Markets one time per calendar year.
- **Weddings/Receptions/Baptisms**

Section 2. Effective Date

This Operating Memorandum shall become effective November 6, 2021, at 12:01 a.m. Pacific Standard Time and shall apply to all contracts and rental agreements, and extensions of any contracts or rental agreements, entered into by a participating fair on or after such effective date.

California Fair Services Authority

By: 
Chair, Board of Directors



CALIFORNIA DEPARTMENT OF
FOOD & AGRICULTURE

Karen Ross, Secretary

December 3, 2021

F2021-11

TO: All Fairs

SUBJECT: Proposition 12 and Junior Livestock Auctions

In 2018, California voters approved the Farm Animal Confinement Initiative (Proposition 12). Proposition 12 requires that covered animals be housed in confinement systems that comply with specific standards for freedom of movement, cage-free design, and minimum floor space. The covered animals are identified as veal calves, breeding pigs, and egg-laying hens. Proposition 12 also prohibits the sale of covered animal products from farm animals confined in a manner that does adhere to the minimum confinement standard requirements into California commerce.

Proposition 12 goes into effect beginning January 1, 2022. While the minimum confinement standards are exempt during fairs and exhibitions, Proposition 12 directly affects the fair industry as all junior livestock fair exhibitors raising and/or exhibiting egg-laying hens for the purpose of producing and selling shell or liquid eggs, or the immediate offspring of a breeding pig for the purpose of producing and selling whole pork meat, must adhere to the minimum confinement standard requirements.

To ensure that your fair's Junior Livestock Auction (JLA) participants are prepared and compliant with the law during the 2022 fair season, we strongly encourage you to begin communicating with your fair's egg and market hog exhibitors, as well as the market hog processors, especially those processing hogs sold as "resale". The processors may require documentation showing proof of each hog's date of birth and Proposition 12 compliance for all hogs sold through a JLA, regardless of the hog's place of birth.

Based on regulations noticed in May 2021, it is being proposed that California pork producers with breeding pigs, for the purpose of producing and selling whole pork meat, will be required to be third-party certified. The third-party certification also applies to any out-of-state exhibition breeders who sell show pigs to California exhibitors. All market hogs sold through a JLA as resale may require documentation showing proof that they originate from a certified producer.



F2021-11
December 3, 2021
Page 2

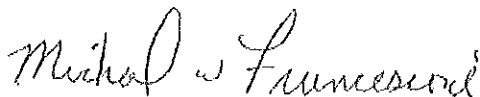
The CDFA Animal Care Program is proposing to modify regulation text and add documents related to the rulemaking file related to the Proposition 12 implementation. A 15-day written public comment period for these changes will begin on December 3, 2021 and end on December 17, 2021. Once the public comment period ends, a new regulations package will be submitted to the Office of Administrative Law for approval. The adoption of regulations is expected to occur on April 1, 2022 or July 1, 2022.

We will keep you updated with the most current information as we receive it, and we hope that all fair managers and stakeholders will participate in the next steps of the regulations process. Please continue to support the youth within our communities as we navigate through yet another challenge.

Enclosed is an FAQ outreach document that the CDFA Animal Health Branch has created for California Fair and Exhibitions Stakeholders. The document has many additional details about Proposition 12 and how it pertains to the fair industry. For more information about the implementation of Proposition 12 and to view the FAQ outreach document online, please visit the CDFA Animal Health Branch at <https://www.cdfa.ca.gov/ahfss/Prop12.html>.

If you have any questions, please contact Mike Francesconi at (916) 900-5365 or via email at mike.francesconi@cdfa.ca.gov.

Sincerely,



Mike Francesconi
Branch Chief

Enclosure

cc: Dr. Elizabeth Cox, Animal Care Program Manager
CDFA Animal Health Branch

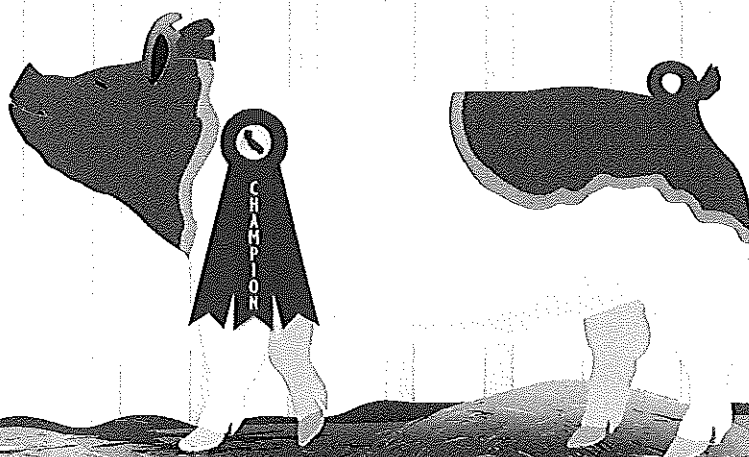
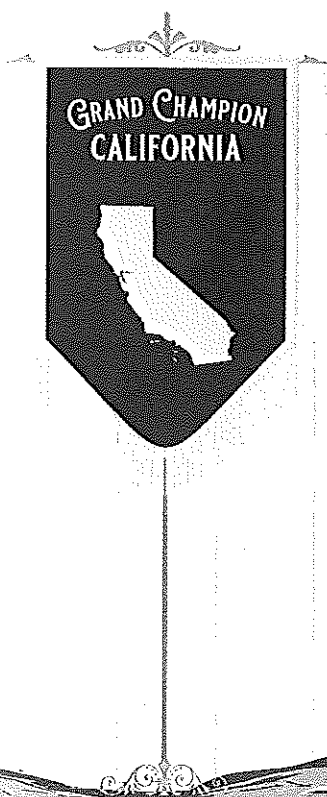


FARM ANIMAL CONFINEMENT

(HSC 25990-25994 (ALSO KNOWN AS PROPOSITION 12 INITIATIVE))



FAQ'S FOR CALIFORNIA FAIR & EXHIBITIONS STAKEHOLDERS 2022

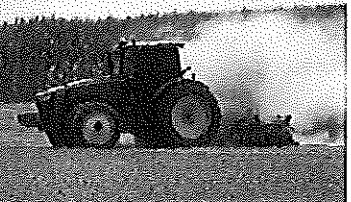




FARM ANIMAL CONFINEMENT

(HSC 25990-25994 (ALSO KNOWN AS PROPOSITION 12 INITIATIVE))

FREQUENTLY ASKED QUESTIONS



FAQ's: Prop 12 FAQs for California Fair and Exhibitions Stakeholders

What is Prop 12?

- ♥ Ballot initiative passed in 2018 which set minimum confinement standards for specific farm animals raised in California and products from those animals sold in California.
- ♥ The law made it illegal to raise these farm animals in enclosures that do not meet these minimum space requirements.
- ♥ The law made it illegal to sell products from these farm animals in California that were not raised according to the minimum space requirements, regardless of if the animal was raised in California or out-of-state (<https://bit.ly/3kPu5Cx>).

Which farm animals are included under Prop 12?

- ♥ Egg-laying hen means any female domesticated chicken, turkey, duck, goose, or guineafowl kept for the purpose of egg production.
- ♥ Breeding pig means any female pig of the porcine species kept for the purpose of commercial breeding who is six months or older or pregnant.
- ♥ Veal calf means any calf of the bovine species kept for the purpose of producing the food product described as veal.

Which products from these animals are included under Prop 12?

- ♥ Shell eggs or liquid eggs means a whole egg of an egg-laying hen in its shell form or means eggs of an egg-laying hen broken from the shells.
- ♥ Whole pork meat means any uncooked cut of pork, including bacon, ham, chop, ribs, riblet, loin, shank, leg, roast, brisket, steak, sirloin, or cutlet, that is comprised entirely of pork meat of a breeding pig, or immediate offspring of a breeding pig.
- ♥ Whole veal meat means any uncooked cut of veal, including chop, ribs, riblet, loin, shank, leg, roast, brisket, steak, sirloin, or cutlet, that is comprised entirely of veal meat of a calf raised for veal.

What are the minimum confinement standards for these farm animals?

- ♥ All of these farm animals must be confined in a housing system in a manner that allows the animal to lie down, stand up, fully extend limbs, and turn around freely. In addition:
- ♥ Egg-laying hen: minimum of the amount of usable floorspace per hen required by the 2017 edition of the United Egg Producers' Animal Husbandry Guidelines for U.S. Egg-Laying Flocks: Guidelines for Cage-Free Housing or in an enclosure other than a cage-free housing system (<https://bit.ly/3FuApr2>)
- ♥ Breeding pig: minimum of 24 square feet of usable floorspace per breeding pig.

Breeding and gestation crates are not allowed

Farrowing crates are allowed

- ♥ Veal calf: minimum of 43 square feet of usable floorspace per calf.





FARM ANIMAL CONFINEMENT

(HSC 25990-25994 (ALSO KNOWN AS PROPOSITION 12 INITIATIVE))

FREQUENTLY ASKED QUESTIONS



FAQ's: Prop 12 FAQs for California Fair and Exhibitions Stakeholders

What are the exceptions to Prop 12 related to California fairs and exhibitions?

- ♥ Prop 12 minimum confinement standards are not required during state or county fair exhibitions. For example, if a breeding pig is shown at a fair, she does not need to be housed with a minimum of 24 square feet while on the fairgrounds.
- ♥ Prop 12 minimum confinement standards are not required during transportation.
- ♥ Prop 12 minimum confinement standards are not required for a breeding pig during the five-day period prior to the breeding pig's expected farrowing date and while the breeding pig is nursing piglets.

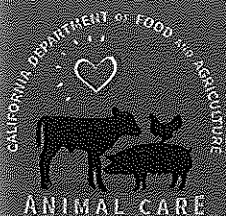
How do the deadlines of Prop 12 relate to the 2022 fair season?

- ♥ For egg-laying hens the minimum cage-free requirement goes into effect after December 31, 2021. If a fair participant is raising egg-laying hens, then the hens must be housed according to Prop 12 after December 31, 2021 if the hens are residing in California and if shell eggs or liquid eggs from those hens are sold in California.
- ♥ For veal calves the minimum floorspace requirement of 43 square feet went into effect January 1, 2020. If a fair participant is raising a calf for the purposes of producing whole veal meat sold in California, then the calf must be raised according to Prop 12.
- ♥ For breeding pigs the minimum floorspace requirement of 24 square feet goes into effect after December 31, 2021. If a fair participant is raising a breeding pig in California, then the breeding pig must be raised according to Prop 12 after December 31, 2021. If a fair participant is raising the immediate offspring of a breeding pig for the purposes of producing whole pork meat sold in California, then the breeding pig dam of this market pig must be raised according to Prop 12 if the market hog is born after December 31, 2021, regardless of the hog's place of birth.

What do I need to do to ensure I am compliant with the law for 2022 fair season?

- ♥ Ensure your animals in California are confined according to Prop 12 requirements.
- ♥ If products from your fair animals will be sold in California (shell eggs, liquid eggs, whole veal meat and whole pork meat) in 2022, buyers of these products (processors, retailers) will likely require a letter documenting compliance with the law.
- ♥ If showing market hogs, the breeder of the market hogs must confine breeding pigs according to Prop 12. In addition, ask of a letter documenting this compliance with the law to ensure whole pork meat from the show pig will have access to the resale market in California.





FARM ANIMAL CONFINEMENT

(HSC 25990-25994 (ALSO KNOWN AS PROPOSITION 12 INITIATIVE))

FREQUENTLY ASKED QUESTIONS



FAQ's: Prop 12 FAQs for California Fair and Exhibitions Stakeholders

What is the difference between custom livestock harvest (not for sale) and FSIS inspected livestock harvest (for resale)?

- ♥ Under custom livestock harvest, the meat from veal calves and hogs is used by the animal's owner, members of the owner's household, nonpaying guests and employees. The whole veal meat and whole pork meat cannot be sold and is labeled "not for sale". There is no sale of whole pork meat or whole veal meat under Prop 12.
- ♥ Under FSIS inspected livestock harvest, the meat from veal calves and hogs is processed for resale. The sale of this whole veal meat and whole pork meat will fall under Prop 12 and the veal calves and breeding pigs (producing the market hogs) will need to be raised according to Prop 12.

What should I do as a fair CEO or Junior Livestock Auction Committee that manages livestock auction?

- ♥ Reach out to your processor to find out what requirements they need for hogs and veal calves processed for resale. For example, a processor may request documentation of hog date of birth and for hogs born after December 31, 2021 a letter documenting compliance with Prop 12 for the breeding pig dam of that market hog. A letter of Prop 12 compliance will need to follow the live animal after the animal is sold at a fair or exhibition.

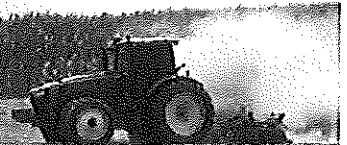
To learn more and to sign up for Prop 12 updates, scan or click the below QR code, or visit <https://www.cdfa.ca.gov/ahfss/Prop12.html>

You can follow us on social media by scanning the below QR codes or by clicking on each individual QR code with your cursor. Email questions to: AnimalCare@cdfa.ca.gov



FARM ANIMAL CONFINEMENT

(HSC 25990-25994 (ALSO KNOWN AS PROPOSITION 12 INITIATIVE))



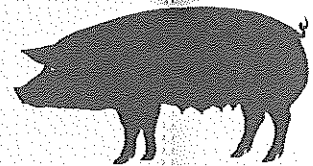
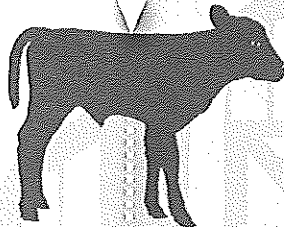
Commercial sale of all Proposition 12 defined covered products must not be from covered animals **confined in a cruel manner*** even when covered products originate from covered animals raised outside of California

*Cruel manner is defined in existing animal care laws as any method of raising or confining animals that is not consistent with the standards of care for the species, as determined by the National Animal Care Standards Council.



JANUARY 1, 2020

JANUARY 1, 2022



Egg-laying hens require a minimum of 144 square inches of floor space per hen.

Calves raised for veal require a minimum of 43 square feet of floor space per calf.

Egg-laying hens included require cage-free housing outlined in United Egg Producers 2017 Guidelines.

Breeding pigs require a minimum of 24 square feet of floor space per pig.

FOOD PRODUCTS INCLUDE

FOOD PRODUCTS INCLUDE

FOOD PRODUCTS INCLUDE

FOOD PRODUCTS INCLUDE

SHELL EGGS
LIQUID EGGS

WHOLE UNCOOKED VEAL
UNCOOKED VEAL CUTS

SHELL EGGS
LIQUID EGGS

WHOLE UNCOOKED PORK
UNCOOKED PORK CUTS

From: Francesconi, Mike@CDFA <mike.francesconi@cdfa.ca.gov>
Sent: Friday, December 3, 2021 11:40 AM
To: Anater, Kenneth@CDFA <kenneth.anater@cdfa.ca.gov>; Ferrero, Gregory@CDFA <Gregory.Ferrero@cdfa.ca.gov>; Francesconi, Mike@CDFA <mike.francesconi@cdfa.ca.gov>; Kume, Joji@CDFA <Joji.Kume@cdfa.ca.gov>; Mitchell, Kalia@CDFA <Kalia.Mitchell@cdfa.ca.gov>; Pelle, Sarah@CDFA <Sarah.Pelle@cdfa.ca.gov>; Goss, Sofia@CDFA <sofia.goss@cdfa.ca.gov>; Fick, Sue@CDFA <sue.fick@cdfa.ca.gov>
Subject: Circular Letter F2021-11

Good Afternoon Fair Managers and Others,

Please find attached, Circular letter F2020-11, in regards to Proposition 12 Farm Animal Confinement. To ensure that your fair's Junior Livestock Auction participants are prepared and compliant we strongly encourage you to begin communicating with fair's egg and market hog exhibitors, as well as the market hog processors, especially those processing hogs sold as "resale". Also attached is a FAQ that CDFA Animal Care put together. In additions CDFA Animal Care Program today released a Notice of 15-day Public Comment Period, see the following notice on how to submit comments.

Notice of 15-day Public Comment Period

California Department of Food and Agriculture, Animal Care Program is proposing to modify regulation text and add documents to the rulemaking file related to the implementation of Proposition 12 (2018). A 15-day written public comment period related to these changes will begin December 3, 2021, and end December 17, 2021. Please visit the Animal Health and Food Safety Services Regulations webpage to review all documents and for instructions to submit a written comment: [Proposition 12, Farm Animal Confinement](#)

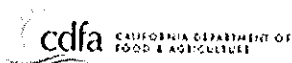
Please ensure that this information is shared with the fair board at the next regularly scheduled board meeting listed as an item of correspondence.

For future reference, you may view and download the F&E Circular Letters at <https://www.cdfa.ca.gov/FairsAndExpositions/> which are located under the "Correspondence" tab.

Sincerely,

Mike

Mike Francesconi
Branch Chief
CDFA Fairs and Expositions
Ph (916) 900-5365
mike.francesconi@cdfa.ca.gov





CALIFORNIA DEPARTMENT OF
FOOD & AGRICULTURE

Karen Ross, Secretary

July 30, 2021

F2021-07

TO: Fair CEOs and Board Chairs

SUBJECT: \$50M General Fund Support – Targeted Support Program

On June 28, 2021, the Governor approved the Budget Act of 2021, which included \$50 million in General Fund to the entire Network of California Fairs for operational support. The \$50M was appropriated with the intent that these funds be allocated based on need. As such, the Fairs and Expositions Branch (F&E) will be implementing a Targeted Support Program to provide allocations tailored toward the operational needs of the network.

The Targeted Support Program will provide funding for operational support through an application process. Funding will depend on the financial need of the applicant relative to the financial needs of the application pool. Fairs interested in receiving this type of allocation will need to provide a completed application along with the supporting documents requested on the form; funds will be allocated based on financial need as supported by their financial statements and the key indicators they list (such as cash balance, unrestricted reserves, current liabilities, debt obligations, and payroll expenditures).

To be considered for the Targeted Support Program, applications and the required documents must be submitted to Joji Kume via email at joji.kume@cdfa.ca.gov by August 16, 2021.

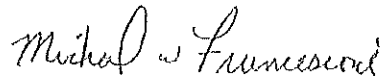
F&E will evaluate the applications submitted in order to determine the allocation amounts and the number of rounds in the Targeted Support Program. The number of rounds in the Targeted Support Program will be highly dependent on the financial need of the applications due August 16, 2021. If funds remain after the first distribution, there will be subsequent rounds, which will be based upon updated financial information at the time of reassessment. **Distribution of these funds are expected to begin by the end of September 2021.**

If you have any questions, please contact me at 916-900-5365 or via email at mike.francesconi@cdfa.ca.gov.



F2021-07 \$50M General Fund Support – Targeted Support
July 30, 2021
[Page 2]

Sincerely,

A handwritten signature in cursive script that reads "Mike Francesconi".

Mike Francesconi
Branch Chief

Enclosure: Targeted Support Application

Pamela Fyock

From: Francesconi, Mike@CDFA <mike.francesconi@cdfa.ca.gov>
Sent: Friday, October 8, 2021 10:59 AM
To: Francesconi, Mike@CDFA
Subject: Mandatory Testing for COVID-19 for Civil Service Employees
Attachments: CDPH State Employer Testing Program Template - At Home.xlsx

Hello CEOs and Board Presidents

The Governors mandate requires all state workers to either show proof of full vaccination or be tested at least once per week. – see Governor Newsom's announcement.

Adhering to this protocol is mandatory for DAA employees as it is considered a condition for employment. DAAs that have not yet provided vaccination status information for their permanent employees and designated a person to coordinate testing are urged to do so without further delay. CDFA will continue to work with DAAs on requirements for testing their employees.

DAAs that anticipated testing volumes of less than 20 tests per week or sites in rural areas qualify for at-home **(unmonitored) rapid antigen and confirmatory PCR testing only**. There is no timeline for when these rapid antigen and confirmatory PCR test kits will be delivered but you are still required to open an account through the company Color to enroll employees who are unvaccinated or decline to state. Color is partnering with CDPH to offer COVID-19 testing to state employees. If DAA has verified that all state employees have been vaccinated they do not have to enroll in color program but must maintain records of verification.

Instructions for DAA enrollment:

- Designate an Organization Director for your DAA
- Designate a Site Lead for your DAA
- Complete the onboarding spreadsheet (Attached).
- To open an account through Color: <https://color.jotform.com/212066276327859> the link will take you to CDPH website
- Once at CDPH website fill out sections 1, 2, and 3 and upload onboarding spreadsheet
 - o Section 2 – DAA will not be listed in drop down box – so type in District Agriculture Association # Organization Name (if not listed in dropdown above)
- Once the information in the onboarding form is submitted, Color will send you an email with instructions.
- DAA need to setup account with Color by 10/15/2021
- Email Mike Francesconi @ mike.francesconi@cdfa.ca.gov and Kacie Fritz @ kacie.fritz@cdfa.ca.gov to let them know that your DAA has established a Color account and uploaded the names of the individuals who need to undergo at-home testing.

Additional Information:

It is very important that both the Organization Director and Site lead review the following two sites to learn more about the testing program:

CDPH: <https://testing.covid19.ca.gov/pcr-resources/>

Color: <https://www.color.com/cdph-site-setup>

Temporary Employees

125-day temporary employees hired by DAA for events will either have to show proof of full vaccination or if unvaccinated or decline to state will have to be tested at least once per week through a third party – they are exempt from being enrolled in Color program. DAA will be required to keep verification records of employees vaccinated and weekly testing results records of employees unvaccinated

Thanks

Mike

Mike Francesconi

Branch Chief

CDFA Fairs and Expositions

Ph (916) 900-5365

mike.francesconi@cdfa.ca.gov

