

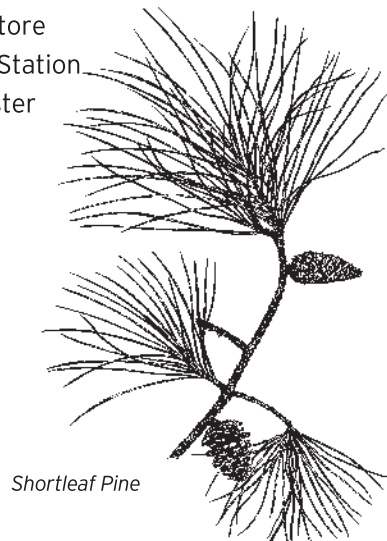


# Tyler State Park Trails Map

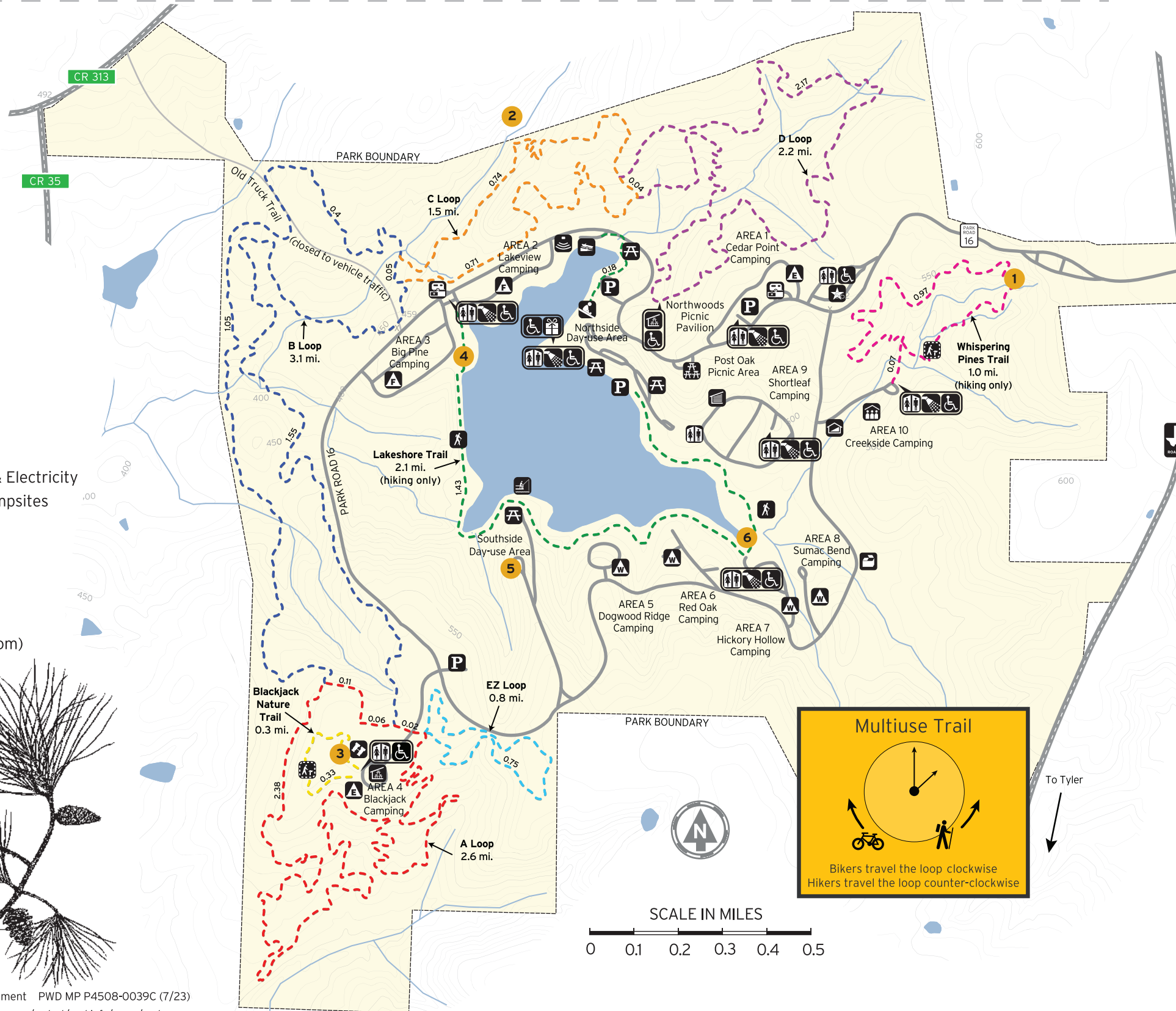
789 Park Road 16  
Tyler, Texas 75706-9141  
(903) 597-5338  
www.texasstateparks.org

## LEGEND

- Headquarters
- Parking
- Restrooms
- Showers
- Wheelchair Accessible
- Hiking Trail
- Interpretive Trail
- Bird Blind
- Fishing Pier
- Boat Ramp
- Group Picnic Area
- Group Dining Hall
- Campsites with Water
- Campsites with Water & Electricity
- Full Hookup/Trailer Campsites
- Amphitheater
- Playground
- Screened Shelter
- Group Picnic Pavilion
- Picnic Area
- Cabins (without bathroom)
- Park Store
- Dump Station
- Dumpster



Shortleaf Pine



**Multiuse Trail**

Bikers travel the loop clockwise  
Hikers travel the loop counter-clockwise



American Beaver

All trails allow hiking and biking unless otherwise indicated. Contour intervals are 10 feet.  
No claims are made to the accuracy of the data or its suitability for a particular use.

## POINTS OF INTEREST

- (GPS coordinates shown in decimal degrees)
- 1 HISTORY LIVES HERE** 32.4818° -95.2842°  
Look for the children's wading pool, rock waterfall, and Beauchamp Springs in this area, developed by the Civilian Conservation Corps (CCC).
  - 2 CCC ROCK DAM** 32.4847° -95.2979°  
The off-property dam visible from Trail C is an example of the CCC using natural building materials. Please respect our neighboring landowner and view this feature from the hiking trail only.
  - 3 BIRD OBSERVATION BLIND** 32.4703° -95.3023°  
Sit quietly in this blind and see how many birds you can spot.
  - 4 VIEW FROM THE PAST** 32.4795° -95.2989°  
The CCC architectural plans include many scenic views where the historic buildings blend into the landscape.
  - 5 CCC OVERLOOK** 32.4751° -95.2976°  
At the top of the hill, take in the view enjoyed by visitors since the 1930s.
  - 6 BEAVER POND** 32.4756° -95.2913°  
Beaver ponds and associated high water levels create habitat diversity and attract many types of wildlife.

© 2023 Texas Parks and Wildlife Department PWD MP P4508-0039C (7/23)  
This publication can be found at [tpwd.texas.gov/spdest/parkinfo/maps/park\\_maps](http://tpwd.texas.gov/spdest/parkinfo/maps/park_maps)  
TPWD receives funds from DHS and USFWS. TPWD prohibits discrimination based on race, color, religion, national origin (including limited English proficiency), disability, age, and gender, pursuant to state and federal law. If you believe you have been discriminated against by TPWD, visit [tpwd.texas.gov/nondiscrimination](http://tpwd.texas.gov/nondiscrimination) or call (512) 389-4800 for information on filing a complaint. To obtain information in an alternative format, contact TPWD on a Text Telephone (TTY) at (512) 389-8915, by Relay Texas at 711, (800) 735-2989, or by email at [accessibility@tpwd.texas.gov](mailto:accessibility@tpwd.texas.gov). If you speak a language other than English and need assistance, email [lep@tpwd.texas.gov](mailto:lep@tpwd.texas.gov). You can also contact Department of the Interior Office of Diversity, Inclusion, and Civil Rights, 1849 C Street, N.W., Washington, D.C. 20240, and/or U.S. Department of Homeland Security Office for Civil Rights and Civil Liberties (CRCL), Mail Stop #0190 2707, Martin Luther King, Jr. Ave., S.E. Washington, D.C. 20528.

# Tyler State Park

## A tranquil haven in the pines, rich with history and recreational opportunities

Situated on a spring-fed East Texas lake, Tyler State Park offers swimming, hiking, mountain-biking, fishing, paddling and camping. Discover the timeless design and craftsmanship of the Civilian Conservation Corps (CCC) that make the park a historic treasure.

### STAYING SAFE

**KNOW YOUR LIMITS.** Prepare for sun and heat. Wear sunscreen, insect repellent and appropriate clothing/hiking shoes.

**DRINK PLENTY OF WATER.** Your body quickly loses fluids when you're on the trail. Bring a quart of water per hour of activity.

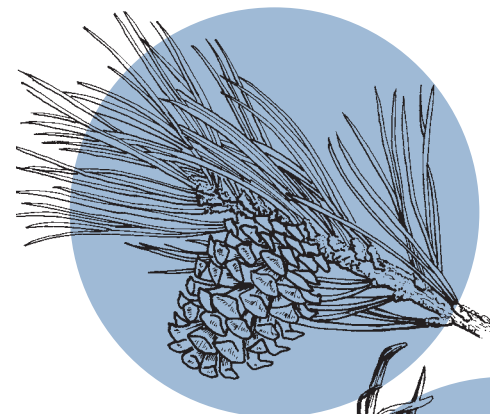
**TELL OTHERS WHERE YOU'LL BE.** If possible, avoid exploring alone. Tell someone where you are going and when you plan to return.

**WEAR A HELMET.** Protect yourself in case of a crash. Always ride to your skill level.

**POTENTIALLY HARMFUL PLANTS AND ANIMALS LIVE HERE.** You'll see them more easily if you stay on trails. Do not approach wildlife!

**CHECK FOR TRAIL CLOSURES.** Certain trails may be closed during prescribed burns or for other resource management work.

**FOR EMERGENCIES, PLEASE CALL 9-1-1.**



Loblolly Pine



White-tailed Deer

| HIKING TRAIL                                   | DIST    | TIME     | DIFFICULTY  | DESCRIPTION  |
|--|---------|----------|-------------|--|
| <b>A LOOP</b>                                  | 2.6 mi. | 1.5 hrs. | Moderate    | This trail includes elevation changes. You may encounter obstacles such as loose gravel.   |
| <b>B LOOP</b>                                  | 3.1 mi. | 2 hrs.   | Moderate    | This trail is over three miles long and includes many elevation changes, making it a challenging but beautiful trek through the park's many different types of forest.   |
| <b>BLACKJACK NATURE TRAIL</b><br>(hiking only) | 0.3 mi. | 20 min.  | Easy        | This flat, short trail crosses a grassy savannah, perfect for families and those looking for an easy walk.   |
| <b>C LOOP</b>                                  | 1.5 mi. | 1 hr.    | Challenging | This trail is short but challenging. It offers the opportunity to see some of the larger pines in the park.  |
| <b>D LOOP</b>                                  | 2.2 mi. | 1.5 hrs. | Challenging | This trail crosses several different forest types which attract a variety of migratory birds. Grab your binoculars and see how many you can spot.  |
| <b>EZ LOOP</b>                                 | 0.8 mi. | 45 min.  | Easy        | You can head out on three different trails from here. Choose the one best suited to your ability.  |
| <b>LAKESHORE TRAIL</b><br>(hiking only)        | 2.1 mi. | 1.5 hrs. | Easy        | This trail is relatively flat with plenty of spots to picnic, cast a line, or just relax and take in the view. Please note this trail does utilize the main park road in some segments. Take care to avoid hiking in someone's campsite. |
| <b>WHISPERING PINES TRAIL</b><br>(hiking only) | 1.0 mi. | 1.5 hr.  | Moderate    | The Civilian Conservation Corps (CCC) developed this trail over 70 years ago, planting pine trees and building a wading pool and a small waterfall.  |

### TRAIL ETIQUETTE

**Trash your trash.** Keep the park natural. Pack out all of your trash and Leave No Trace.

**Leave feeding to nature.** Feeding wild animals will make them sick and more likely to harm people.

**Take only memories and pictures.** Please don't disturb or remove any of the park's plants, animals or artifacts.

**Keep pets on leashes** for their safety, and to protect wildlife.