



**HARFORD**  
COMMUNITY COLLEGE

**MALLORY LEWIS AND LAMB CHOP**  
The Shari Lewis Legacy Show

**FEB 23 | 3 PM**

**AMOSS CENTER**

**[HarfordEvents.com](http://HarfordEvents.com)**

- Alyssa B.

**“WHAT A WONDERFUL OFFICE  
WITH STAFF THAT TRULY CARES  
ABOUT THE PATIENTS!”**

Pediatric dental care for  
infants to teens, including  
those with special needs

**Growing  
Smiles**  
Pediatric Dentistry

**OUR DENTISTS**

Diana Capobianco, D.D.S.\*

Todd Lyman, D.D.S.\*

Chris Bailey, D.D.S.\*

Roxanne Clarke, D.D.S.\*

Marina Meshreky, D.M.D.

\*Diplomate of the  
American Board of  
Pediatric Dentistry.

**3 CONVENIENT LOCATIONS**

**WHITE MARSH**

General Office: 410-697-9000  
Orthodontics: 410-697-9030

**BEL AIR**

410-569-6700

**HAVRE DE GRACE**

443-526-7900

**HEALTHY SMILES  
GROW HERE**

**GROWINGSMILES.COM**



## WELCOME

Thank you for joining us at today's performance. We are very excited to bring you a great lineup of Live! entertainment this season including concerts, family programming, dance and theater productions, exhibits, cultural arts, and community celebrations. We are so glad you are with us to experience live arts programming at Harford Community College.

Our **HarfordEvents.com** website includes all of our concert, performance, exhibit, and community event information in one place, making it easy for you to find out about the great offerings on our campus.

Our staff and volunteers want you to have the best possible experiences before, during, and after the show. Please share your suggestions about the ways we may make your experience unforgettable. Contact the Ticket Office at 443-412-2211 or email [srutherford@harford.edu](mailto:srutherford@harford.edu) with your ideas, feedback, and suggestions.

Thank you for supporting the arts in Harford County!

A handwritten signature in black ink that reads "Stacy Rutherford".

**Stacy Rutherford**  
**Director for Events & Conferencing**  
**General Manager for the APGFCU Arena**

**Special Events and Performances are made possible in part through funding from:**



These performances are supported by a grant from Maryland State Arts Council through the Harford County Cultural Arts Board. As the official county arts agency, the Harford County Cultural Arts Board is the premier local resource for arts organizations, independent artists, and the audiences of Harford County, Maryland. The government-appointed board provides grant opportunities, advocacy and administrative support; sponsors workshops, events, and promotional opportunities; and encourages and invests in the advancement of the arts for the community.

# Harford Community College Board of Trustees

Brian Walker, Chair

Sharon Markley Schreiber, Vice Chair

Maude M. CreveCoeur

Laura L. Henninger, Esq., CPA

Karen Holt

David Jimenez

Steve D. Linkous

Christopher Payne

Michael Smith

Secretary:

Theresa B. Felder, Ed.D.

President, Harford Community College

---

## **HARFORD COMMUNITY COLLEGE**

### **MISSION**

Harford Community College provides relevant, accessible education, training and cultural enrichment, connecting individuals and opportunities in an evolving world.

### **VISION**

Harford Community College is a regional leader in education and workforce development, offering transformative programs that drive individual growth and shared prosperity.

### **VALUES**

Student Centered | Communication & Collaboration  
Respect | Equity & Inclusion | Excellence



# **MALLORY LEWIS AND LAMB CHOP**

## **The Shari Lewis Legacy Show (2025)**



**FEB 23 | 3:00 PM**  
**AMOSS CENTER**

[mallorylewisandlambchop.com](http://mallorylewisandlambchop.com)



**Any video and/or recording of this production is strictly prohibited**

**Harford Community College is a completely tobacco-free campus.**

As a courtesy to fellow patrons, please refrain from talking during performances.

The use of photographic or recording devices of any kind is prohibited in the theater. Please silence all cell phones and electronic devices.

Please note that your attendance at this performance constitutes consent for the College taking and using photographs for promotional and other purposes.

# Mallory Lewis & Lamb Chop

## The Shari Lewis Legacy Show



Following her mother's passing *Shari Lewis* in 1998, Mallory Lewis began appearing with Lamb Chop at live and televised events, entertaining at thousands of venues as varied as the Sate Fairs, Performing Arts Centers, Cruise Ships, and Military Bases all around the world.

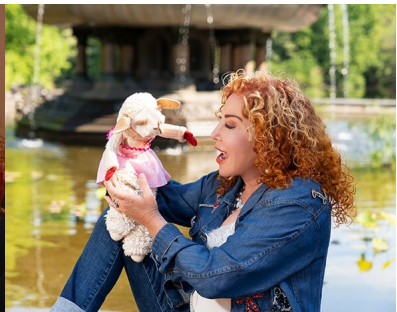
Now taking social media by storm Mally and Lamb Chop have nearly half a MILLION followers across her socials. On Tik Tok: @yourfavlambchop and Insta @MalloryLewisandLambChop.

Mally and Lamb Chop have received many performance awards including the "*Award for Excellence by UNAMA*", the "*International Puppeteers Association*", and the "*Kid's First Palmer Vision Award*".

As an author, Mallory has penned 20 children's novels, and is a multiple time "*Emmy Award Nominee*" and "*Emmy Award Winner*" for "*Outstanding Writing in a Children's Series*".

Mallory and Lamb Chop are heavily committed to charitable causes and have organized 4 Women's World Record Skydiving Events, which have raised close to 2 million dollars for *Breast Cancer Research* ([jumpforthecause.com](http://jumpforthecause.com)) and, though Mallory stays on the grounds these days, Lamb Chop proudly holds a USPA license and 4 records!

Lamb Chop and Mallory will soon be celebrating over 25 years together as performers. Their most popular show, "*The Shari Lewis and Lamb Chop Legacy Show*" features an hour plus of Lamb Chop Live seamlessly melded with vintage footage and nostalgia delights for audiences of all ages.



# Remembering Shari Lewis



Shari Lewis was born Phyllis Hurwitz on January 17, 1934 to Ann and Abraham Hurwitz, in New York City. Through the encouragement of both of her parents, Shari began performing at the age of thirteen. She had lessons in acrobatics, juggling, piano, violin, and ventriloquism.

In 1952, Lewis and her puppetry won first prize on Arthur Godfrey's Talent Scouts television show. In March 1956, she and Lamb Chop appeared on Captain Kangaroo and by 1960 she had her own television program. Shari subsequently had numerous series both in the UK and the US. Shari was also an accomplished conductor of orchestras and wrote over 60 books in her lifetime.

In the early 1990s, PBS approached her about reviving her television show. Lamb Chop's Play-Along aired on PBS from 1992 to 1995. Shari won many awards including thirteen Emmy Awards, the Dor L'Dor award of the B'nai B'rith (1996), three Houston Film Festival Awards, the Peabody Award (1960), and many more.

Shari Lewis died in 1998 of pneumonia while being treated at Cedars-Sinai Hospital at the age of 65. Shari is survived by her daughter, Mallory Lewis, who now performs with Lamb Chop, and her only grandchild, James Abraham Tarcher Hood, who slept with his Grandma's Lamb Chop!







# DSQ

DALLAS STRING QUARTET

## STRINGS UNLEASHED

A ROCK FUSION EXPERIENCE

A brand-new electric evening, perfect for a date night or the entire family! Brimming with your favorite rock songs – played on electric string instruments – your ears will be delighted, your feet will be tapping, and you won't be able to remove your eyes from the captivating stage presence that is DSQ. The electric violin and viola instrumentation will be accompanied by bass, guitar, and drums for a sonically thrilling, classic rock experience with favorites from Led Zeppelin, Metallica, ACDC, Journey, Bon Jovi, Guns N' Roses and more!

# MAR 21

# 7:30 PM

### AMOSS CENTER

Reserved Seating

Tickets: \$42 | \$37 | \$32

*Prices include ticketing fees.*

THIS EVENT IS SUPPORTED IN PART BY:



### TICKETS:

**HarfordEvents.com**

OR **443.412.2211**







The **realization of your biggest dreams** often begins with a plan. Our team of independent advisors make recommendations that align with how you want to live now and in the future.



**Harford Financial Group**  
Retirement Income Specialists

[www.harfordfinancialgroup.com](http://www.harfordfinancialgroup.com)

Securities offered through Registered Representatives of Cambridge Investment Research, Inc., a Broker/Dealer, Member FINRA/SIPC. Advisory services offered through Cambridge Investment Research Advisors, Inc., a Registered Investment Advisor. Harford Financial Group and Cambridge are not affiliated.

# FOREVER DONNA

THE ULTIMATE DONNA SUMMER TRIBUTE | STARRING RAINERE MARTIN

Celebrate the timeless legacy of the Queen of Disco, Donna Summer. Forever Donna celebrates the life and music of the legendary singer. Rainere Martin pays homage to the iconic music and everlasting spirit of Donna Summer. Immerse yourself in the soulful renditions of Donna Summer's greatest hits, as Rainere Martin takes you on a journey back to the disco era. From "Hot Stuff" to "Last Dance", experience the magic of Donna's music like never before.

**APR 12**  
**8 PM**

## APGFCU ARENA

Reserved Seating

Tickets: \$48 | \$43 | \$38 | \$33

*Prices include ticketing fees.*



THIS EVENT IS SUPPORTED IN PART BY:



## TICKETS:

**HarfordEvents.com**

**OR 443.412.2211**





Phoenix Festival Theater presents



# SHREK The MUSICAL

MAR 14 | 7 PM   MAR 15 | 2 & 7 PM   MAR 16 | 2 PM   [HarfordEvents.com](http://HarfordEvents.com)



HARFORD DANCE THEATRE PRESENTS

## RETURN TO THE CHOCOLATE FACTORY

[HarfordEvents.com](http://HarfordEvents.com)

MAY 2 | 7 PM  
MAY 3 | 1 & 5 PM  
MAY 4 | 1 & 5 PM



DON'T  
LET THE  
PIGEON  
DRIVE THE  
BUS!



THE MUSICAL!

JUN 1 | 3 PM  
[HarfordEvents.com](http://HarfordEvents.com)



Adams Chevrolet, Inc.  
1517 Pulaski Highway  
Havre de Grace, MD 21078

410-939-2255  
[www.AdamsChevrolet.com](http://www.AdamsChevrolet.com)





**"My mom was one of the world's greatest entertainers. I don't want to challenge that. I don't think it's wise to go there. But I do want to do everything that I can do for Lamb Chop. I'll help keep her going."**

*- Mallory Lewis (USA Today)*

**"People love me because I make them feel safe, and I remind them of a simpler time in their lives,"**

*- Lamb Chop (New York Times)*

# Lamb Chop Fun Facts!



- \* Lamb Chop is a 6-year-old girl.
- \* In 1993 Lamb Chop gave testimony before the U.S. Congress about Children's Television.
- \* "Lamb Chop's Play-Along!" won six Emmy Awards.
- \* Her teddy bear is named "Mr. Bearly."
- \* Lamb Chop is an honorary three-star general in the Marines.
- \* In 2021 she made her museum debut at The Museum of the City of New York.







**Vagabond**  
Sandwich Co.



**111 THOMAS ST. BEL AIR, MD 21014**  
**410.838.1263**  
**MON – SAT 10AM-9PM**



15TH ANNIVERSARY TOUR

# THE TEXAS TENORS

The Texas Tenors are the most successful music group and third highest selling artist in the history of America's Got Talent! Since appearing on the series in 2009, JC Fisher, Marcus Collins and John Hagen are 3-time Emmy Award Winners and Billboard Magazine's #10 classical crossover artist in the world. These classically trained, versatile tenors were honored to be included among the top 50 acts in the world and the only vocal group from the USA invited to appear on NBC's America's Got Talent: The Champions. This 15th Anniversary Tour concert will include music from their new #1 album along with rousing patriotic favorites.

**APR 11**  
**8 PM**

**APGFCU Arena**

Reserved Seating

Tickets: \$58 | \$48 | \$38 | \$28

*Prices include ticketing fees.*



THIS EVENT IS SUPPORTED IN PART BY:



**TICKETS:**

**HarfordEvents.com**

**OR 443.412.2211**



For disability-related accommodations, contact 443.412.2211 at least two weeks in advance.






# THE *Susquehanna*

**SYMPHONY ORCHESTRA**

*SHELDON BAIR, FOUNDER AND MUSIC DIRECTOR*

**HARFORD COUNTY'S  
NONPROFIT ALL-VOLUNTEER  
ORCHESTRA**



For information on concerts  
and how to get involved, visit

**SSOrchestra.org**



# County Ballet

Dance Studio emphasizes the building of the dancer's physical technique, plus instills the love of the art of dance! Dance education at County Ballet is an enriching, life changing, fun activity.

**OVER 40 YEARS OF AMAZING CLASSES WITH  
OUR PROFESSIONAL STAFF**



## The Dance Shop

**Has a full selection of dancewear,  
footwear, and gifts!**

Toddlers to Plus Sizes in stock.



Serving the Greater Baltimore  
and Harford County Area  
The County Ballet Dance Studio & Dance Shop  
2232 Old Emmorton Rd. Bel Air, MD 21015  
**410.515.0031 | 410.569.0316**

[countyballetdanceshop@gmail.com](mailto:countyballetdanceshop@gmail.com)

**CountyBallet.com**

# BARTENFELDER SANITATION SERVICE, INC.



**Dedicated Staff Members**  
**Community Giveback**  
**Residential Services**  
**Commercial Services**  
**Dependable Service**  
**Neat Can Placement**  
**HOA Communities**  
**Dumpster Services**

**\$50 off your first  
invoice with us  
with promo code  
HCC50**

SCAN ME



**410 457 5550**

**WWW.BARTENFELDERSANITATION.COM**

*Locally Owned and Operated Since 2010*





# Jarrettsville Federal

SAVINGS & LOAN ASSOCIATION<sup>SM</sup>



MOST BANKS HAVE BRANCHES  
**WE HAVE ROOTS**

150 years of lending  
experience in  
**Harford County!**

- Low Rates
- Quick Loan Decisions
- Personalized Service!

Call 410-692-5151

3706 Norrisville Road  
Jarrettsville, MD

visit us at:  
[www.jarrettsvillefederal.com](http://www.jarrettsvillefederal.com)

NMLS#431219

Member  
**FDIC**

