

7th Annual  
Black Angus & SimAngus  
*Fall Bull Sale*



*Selling 46 Angus Bulls,  
17 SimAngus Bulls, and 40 Commercial  
Pairs & Open Heifers*

**Saturday, November 18, 2017, Noon**  
*on the Farm*  
Vernon, Alabama

**DVAuction**  
Broadcasting Real-Time Auctions



Bill & Carol Freeman, Owners  
205/695-6314 (office)



## Welcome!

Our crew at Timberland Cattle would like to extend a personal invitation for you to come join us this year for our 7th Annual Fall Sale on Saturday, November 18, 2017, at the farm near Vernon, Alabama (Lamar County). Black Angus and SimAngus cattle are in hot demand these days, with producers looking to put great genetics into their herds, and thereby increasing their profit-line for many years to come.

This year's sale offering will include 60+ Registered Angus and SimAngus bulls ready to work on your farm. All bulls are the results of artificial insemination offering you products with top genetics. New this fall, we will also be offering 40+ head of our great commercial females for those producers wanting to expand their commercial herds.

After you've browsed through our catalog, feel free to call us and come look over the cattle (205-695-6314). Hope to see you in Vernon on November 18.

William (Bill) Freeman, Owner  
Timberland Cattle

### Guest Consignor: Baker Farms – Angus Bulls, Lots 42-45

Mikey & Donald Baker, 6570 County Rd. 23, Fayette, AL 35555; 205/270-8300

## **DVAuction** *Broadcasting Real-Time Auctions*

### Watch and Bid Online at DVAuction.com.

We are pleased to bring you real-time internet bidding and a live broadcast of this sale through DVAuction. To watch or bid online, simply complete the following steps:

- Visit the DVAuction website at [www.dvauction.com](http://www.dvauction.com).
- Click on the "Create New Account" tab.
- Enter a user name, password, and your contact information.
- Complete the Banking Information. (If you are only interested in viewing, you can skip this section.)
- Select your Time Zone, accept the Terms and Conditions, and click "Create Account."
- Complete the process by answering a few questions, selecting your subscription choices.
- Click on "Apply for Bidding" in the upper left corner of your screen to select the sales you wish to bid on.
- Be sure to include a personal contact at your bank. We will contact them in order to get a credit reference.
- If you would prefer to be approved using your credit card, call 402/316-5460.

- Please be sure to apply for bidding at least two days in advance of the sale. Every effort will be made to process your application in a timely manner.

**DVAuction** will contact you once you have been approved to bid. We do not provide buyer numbers until you have purchased a lot in the sale and that number is only usable for that auction. After the sale, contact the sale owner or manager to make arrangements for payment and delivery of your online purchases.

**Please Note:** High speed Internet access (DSL, T-1, or Broadband) is required to be able to bid successfully during the sale. If you have any questions, please contact DVAuction at 402/316-5460 or email [support@dvauction.com](mailto:support@dvauction.com).

**Proxy Bidding:** If you can't access a computer during the sale, you can now place a "proxy bid" through DVAuction. Simply follow the instructions listed above, and as the sale date nears, there will be a "Proxy Bidding" link under the sale listing on the main page of DVAuction. You can then place the maximum amount that you'd like to bid, and our system will represent your bid just as if you were there.

# 7th Annual Black Angus & SimAngus Fall Bull Sale



on the Farm in Vernon, Alabama  
Saturday, November 18, 2017, Noon

**Farm's Main Office Phone** ..... 205/695-6314  
**Bill Freeman, Owner** ..... 205/712-0671

**Auctioneer:**  
Carroll T. Cannon (Lic. #5233) ..... 229/881-0721

**Ringmen:**  
John Davis ..... 662/316-0771  
Jimmy Fetner ..... 334/863-0115  
C. W. Franks ..... 662/891-6665

**Buyers unable to attend the sale may pre-register for online bidding at [www.DVauction.com](http://www.DVauction.com) (402/316-5460).** Please be sure to apply for bidding at least two days in advance of the sale. Buyers can also call in their bids to the Auctioneer or Ringmen before the sale begins.

Three 65" television screens will show videos of the cattle to the bidders during the auction. Bids will be taken by the ringmen and auctioneer as usual; but animals will not be traveling through a sale ring. Cattle will be on site and available for loadout immediately following the sale. Around October 25, videos of the animals can be viewed online at [www.dvauction.com](http://www.dvauction.com); or you can simply click on the video link on our website [www.timberlandcattle.com](http://www.timberlandcattle.com).

**Terms & Conditions:** Cash or Check only. Full purchase amount is due sale date, before cattle will be released to the buyer. A 5% discount will be extended to those buying 5 or more bulls on sale say. Unless prior authorization is obtained, all cattle should be picked up within 24 hours of sale and livestock insurance will be the responsibility of the buyer. Cattle will sell under the suggested Terms and Conditions of the American Angus Association.

([http://www.angus.org/Pub/suggested\\_sale\\_terms.pdf](http://www.angus.org/Pub/suggested_sale_terms.pdf)).

**Livestock Mortality Insurance:** This type of insurance will be the responsibility of the buyer and will be available for purchase on sale day.

**Supplemental Information:** A supplemental sheet will be available sale day with complete and up-to-date information. The supplemental sheet and announcements from the auction block take precedence over sale catalog information.

**Herd Health:** Dr. David Hidalgo will provide proper health certificates for cattle shipping out-of-state. All Timberland Cattle animals were vaccinated and boosted with Bovi-Shield Gold + VL5-HB and Ultrachoice 8. All Timberland bulls have passed a breeding soundness examination (BSE), and certificates will be available at the sale. All Timberland bulls 18 months of age and older have been tested free of Trichomoniasis.

**Enhancement Programs:** Many of the bulls may qualify for agricultural enhancement programs. Buyers should check with their State's Department of Agriculture to determine eligibility.

**Trucking:** Truckers believed to be reliable will be available to assist you in transporting your purchases. Contact Larry Trimm (self-employed) – 205/270-0090 or 205/932-5500.

**Food:** Lunch will be available on-site. No alcohol will be served.

**Liability:** Anyone previewing the cattle and/or attending the sale does so at his/her own risk. Neither Timberland Cattle, nor its employees, or anyone associated with the management of the sale will be held liable for injury to attendees or to purchased animals. The responsibility for sold animals passes to the buyer when the auctioneer says "Sold." Timberland Cattle will make every reasonable effort to ensure the safe handling of purchased cattle until picked up by the buyer. Buyers are encouraged to purchase mortality insurance before cattle are transported.

**Viewing of Cattle:** If you would like to visit the farm and view the cattle prior to the sale, please call the farm office at 205/695-6314. Around October 25, videos and/or photos will be posted to the farm's website – [www.timberlandcattle.com](http://www.timberlandcattle.com). On sale day, large television screens will be displaying videos of the cattle during the auction. Cattle will not be traveling through the ring.

**Sale Location:** The auction will be held on the farm at Timberland Cattle's Auction Arena located at 15185 County Road 49, Vernon, AL 35592.

**Directions:** Driving from Vernon, AL: travel 10 miles east on Alabama Highway 18; turn right onto County Road 49 (South). The farm is located 3 miles on the right. See our website for detailed map and driving directions.

**Transportation:** Starkville, MS (GTR) Airport is a one-hour drive to the farm and Birmingham, AL (BHM) Airport is a two-hour drive. Rental cars are available at both airports.

**Accommodations:**  
Wingate Hotel, Tupelo, MS ..... 662/680-8887  
Hampton Inn, Columbus, MS ..... 662/245-1085  
Sleep Inn, Jasper, AL ..... 205/387-2001  
Econolodge, Tuscaloosa, AL ..... 205/330-0345

**EPDs and percentile rankings are current as of October 2, 2017. Updated EPDs can be viewed online at [www.angus.org](http://www.angus.org) and [www.simmental.org](http://www.simmental.org)**

**See videos at [www.timberlandcattle.com](http://www.timberlandcattle.com)**

# Timberland Cattle Angus Bulls (Lots 1-41)

**Angus Bulls:  
Lots 1-45  
SimAngus Bulls:  
Lots 46-62  
Commercial Cattle:  
Lots 63-103**

## 1

### TLC Untapped 6022

Angus Bull • 08/27/2016 • 6022 • 18574165

Baldrige Waylon W34  
EXAR Untapped 4710B  
Basin Joy 6278  
E&B 1680 Precision 1023  
Turner Precision 8070  
Turner Erica 6259

ADJ 365 %IMF	BW
4.45	67
ADJ 365 URE	AWW
12.9	734
	AYW
	1065

Top 10% \$W, top 15% CW and \$B, and top 20% CED and MILK.

CED	BW	WW	YW	MILK	CW	MARB	RE	\$W	\$B
+10	+2	+58	+93	+28	+50	+67	+54	+63.81	+146.79



## 2

### TLC Untapped 6026

Angus Bull • 09/01/2016 • 6026 • 18558619

Baldrige Waylon W34  
EXAR Untapped 4710B  
Basin Joy 6278  
B/R New Day 454  
TLC Pride 2138  
TDCC Ja Car Dreams 908

ADJ 365 %IMF	BW
4.98	69
ADJ 365 URE	AWW
13.6	729
	AYW
	1182

Top 15% WW and YW, top 20% CED, MILK, and \$W.

CED	BW	WW	YW	MILK	CW	MARB	RE	\$W	\$B
+10	+1.2	+62	+112	+28	+39	+66	+43	+57.69	+127.82



## 3

### TLC Untapped 6036

Angus Bull • 09/05/2016 • 6036 • 18558623

Baldrige Waylon W34  
EXAR Untapped 4710B  
Basin Joy 6278  
S S Objective T510 0T26  
TLC Blackclass 0102  
RAY Blackclass 8185

ADJ 365 %IMF	BW
4.41	69
ADJ 365 URE	AWW
15.0	705
	AYW
	1174

Top 15% CED, WW, and YW, and top 20% MILK, MARB, and \$W.

CED	BW	WW	YW	MILK	CW	MARB	RE	\$W	\$B
+11	+1.1	+62	+110	+28	+39	+76	+44	+58.74	+132.63



## 4

### TLC Untapped 6046

Angus Bull • 09/08/2016 • 6046 • 18557946

Baldrige Waylon W34  
EXAR Untapped 4710B  
Basin Joy 6278  
Mytty In Focus  
TLC Finks 0126  
TD MS Fink 831

ADJ 365 %IMF	BW
3.56	69
ADJ 365 URE	AWW
13.3	706
	AYW
	1088

Top 15% CED and top 20% MILK.

CED	BW	WW	YW	MILK	CW	MARB	RE	\$W	\$B
+11	+9	+55	+95	+28	+39	+52	+39	+54.77	+119.90



# Timberland Cattle Angus Bulls (Lots 1-41)

## 5 TLC Untapped 6047 Angus Bull • 09/08/2016 • 6047 • 18557947

Baldrige Waylon W34  
EXAR Untapped 4710B  
Basin Joy 6278  
Connealy Lead On  
TLC Lady 035  
TBR Lady Ext J130

ADJ 365 %IMF	BW
3.88	68
ADJ 365 URE	AWW
13.8	657
AYW	1051

Top 20% CED.

CED	BW	WW	YW	MILK	CW	MARB	RE	\$W	\$B
+10	+2	+50	+87	+27	+29	+57	+42	+52.19	+98.08

## 6 TLC Untapped 6053 Angus Bull • 09/12/2016 • 6053 • 18557952

Baldrige Waylon W34  
EXAR Untapped 4710B  
Basin Joy 6278  
Hoover Dam  
TLC Finks3076  
TLC Finks 0126

ADJ 365 %IMF	BW
3.76	70
ADJ 365 URE	AWW
11.4	608
AYW	1035

CED	BW	WW	YW	MILK	CW	MARB	RE	\$W	\$B
+8	+1.7	+50	+93	+26	+37	+56	+43	+44.23	+121.53

## 7 TLC Untapped 6058 Angus Bull • 09/16/2016 • 6058 • 18569240

Baldrige Waylon W34  
EXAR Untapped 4710B  
Basin Joy 6278  
Connealy Final Product  
TLC Lass 2041  
TLC mif13880818 14166234 580

ADJ 365 %IMF	BW
3.84	66
ADJ 365 URE	AWW
12.8	586
AYW	1082

CED	BW	WW	YW	MILK	CW	MARB	RE	\$W	\$B
+9	+1.0	+52	+99	+25	+27	+47	+25	+45.28	+93.48

## 8 TLC Untapped 6079<sup>DDP</sup> Angus Bull • 09/30/2016 • 6079 • 18573894

Baldrige Waylon W34  
EXAR Untapped 4710B  
Basin Joy 6278  
Connealy Final Product  
TLC Rita 3024  
TLC Rita 099

ADJ 365 %IMF	BW
3.90	70
ADJ 365 URE	AWW
12.2	668
AYW	1089

CED	BW	WW	YW	MILK	CW	MARB	RE	\$W	\$B
+8	+1.4	+56	+100	+26	+41	+44	+51	+51.43	+124.94

## 9 TLC Untapped 6094 Angus Bull • 10/11/2016 • 6094 • 18646076

Baldrige Waylon W34  
EXAR Untapped 4710B  
Basin Joy 6278  
Connealy Final Product  
TLC Rita 3106  
TDCC Rita 3562 904

ADJ 365 %IMF	BW
4.24	67
ADJ 365 URE	AWW
13.5	636
AYW	1097

Top 15% YW.

CED	BW	WW	YW	MILK	CW	MARB	RE	\$W	\$B
+9	+1.5	+59	+109	+27	+41	+58	+54	+52.88	+132.29

## 10 TLC Untapped 6095 Angus Bull • 10/14/2016 • 6095 • 18646316

Baldrige Waylon W34  
EXAR Untapped 4710B  
Basin Joy 6278  
SydGen C C & 7  
TLC Violet 1061  
TD-3052-611

ADJ 365 %IMF	BW
3.99	66
ADJ 365 URE	AWW
13.2	774
AYW	1089

Top 10% CED and \$W, top 15% BW and MILK, and top 20% WW.

CED	BW	WW	YW	MILK	CW	MARB	RE	\$W	\$B
+12	-.6	+60	+98	+29	+44	+48	+38	+64.44	+123.79

## 11 TLC Untapped 6098 Angus Bull • 10/16/2016 • 6098 • 18646319

Baldrige Waylon W34  
EXAR Untapped 4710B  
Basin Joy 6278  
ALC Big Eye D09N  
RES Rosealee 347 D09N 756  
RES Rosealee 954 4915 347

ADJ 365 %IMF	BW
3.84	68
ADJ 365 URE	AWW
13.7	579
AYW	993

Top 15% CED.

CED	BW	WW	YW	MILK	CW	MARB	RE	\$W	\$B
+11	+1.3	+45	+84	+27	+34	+47	+56	+43.31	+111.47

## 12 TLC Untapped 6099 Angus Bull • 10/18/2016 • 6099 • 18646320

Baldrige Waylon W34  
EXAR Untapped 4710B  
Basin Joy 6278  
Connealy Consensus 7229  
TLC Everalda Entense 2068  
TLC Everalda Entense 090

ADJ 365 %IMF	BW
4.18	67
ADJ 365 URE	AWW
13.1	671
AYW	1084

Top 15% CED.

CED	BW	WW	YW	MILK	CW	MARB	RE	\$W	\$B
+11	+1.0	+52	+94	+27	+36	+53	+32	+49.41	+112.80

# Timberland Cattle Angus Bulls (Lots 1-41)

## 13 TLC Untapped 6102

Angus Bull • 10/23/2016 • 6102 • 18646323

Baldrige Waylon W34  
EXAR Untapped 4710B  
Basin Joy 6278  
Connealy Consensus 7229  
TLC Tiffany 2098  
Ray Tiffany 8451

ADJ 365 %IMF	BW
3.93	66
ADJ 365 URE	AWW
12.1	613
AYW	1034

Top 10% CED.

CED	BW	WW	YW	MILK	CW	MARB	RE	\$W	\$B
+12	+4	+51	+92	+25	+31	+59	+20	+47.68	+104.07

## 15 TLC Untapped 6114

Angus Bull • 11/06/2016 • 6114 • 18648299

Baldrige Waylon W34  
EXAR Untapped 4710B  
Basin Joy 6278  
Connealy Combination 0188  
MF Lady Zion 214 81Z  
MF Lady Zion 214 81

BW
71
AWW
686
AYW
1139

Actual 9/14/17 %IMF: 5.52 and URE: 13.1.  
Top 10% YW, top 15% WW, and top 20% \$B.

CED	BW	WW	YW	MILK	CW	MARB	RE	\$W	\$B
+5	+2.1	+64	+115	+24	I+45	I+57	I+45	+52.99	+137.99

## 17 TLC Denver 6023

Angus Bull • 08/27/2016 • 6023 • 18554409

EXAR Upshot 0562B  
EXAR Denver 2002B  
Exar Royal Lass 1067  
EXAR Comanchero 1022B  
TLC Violet 4033  
TLC Violet 1061

ADJ 365 %IMF	BW
3.82	68
ADJ 365 URE	AWW
11.5	606
AYW	1041

CED	BW	WW	YW	MILK	CW	MARB	RE	\$W	\$B
+9	+1.9	+53	+98	+26	+27	+68	+49	+46.10	+109.79

## 19 TLC Denver 6059

Angus Bull • 09/17/2016 • 6059 • 18570530

EXAR Upshot 0562B  
EXAR Denver 2002B  
Exar Royal Lass 1067  
Connealy Forward  
TDCC Rita 3562 904  
Southern Rita 747 3562

ADJ 365 %IMF	BW
3.70	62
ADJ 365 URE	AWW
12.7	685
AYW	997

Top 10% CED and Milk, top 15% \$W, and top 20% MARB.

CED	BW	WW	YW	MILK	CW	MARB	RE	\$W	\$B
+12	+4	+56	+91	+30	+38	+76	+63	+60.68	+131.78

## 14 TLC Untapped 6108

Angus Bull • 10/24/2016 • 6108 • 18646328

Baldrige Waylon W34  
EXAR Untapped 4710B  
Basin Joy 6278  
SydGen C C & 7  
B A R Lady Rosemond 047  
B A R Lady Rosemond 613

ADJ 365 %IMF	BW
3.99	65
ADJ 365 URE	AWW
14.0	671
AYW	1122

Top 5% CED, and top 20% BW and MILK.

CED	BW	WW	YW	MILK	CW	MARB	RE	\$W	\$B
+13	+0	+53	+102	+28	+41	+45	+47	+50.01	+125.36

## 16 TLC Untapped 6119

Angus Bull • 11/13/2016 • 6119 • 18648304

Baldrige Waylon W34  
EXAR Untapped 4710B  
Basin Joy 6278  
Connealy Consensus 7229  
TLC Eileen 2049  
TDCC MS Eileen 910

BW
70
AWW
659
AYW
1147

Actual 9/14/17 %IMF: 3.43 and URE: 13.7.  
Top 20% MILK and \$W.

CED	BW	WW	YW	MILK	CW	MARB	RE	\$W	\$B
+9	+1.2	+59	+103	+28	I+37	I+56	I+42	+57.02	+120.15

## 18 TLC Denver 6042

Angus Bull • 09/07/2016 • 6042 • 18556651

EXAR Upshot 0562B  
EXAR Denver 2002B  
Exar Royal Lass 1067  
Connealy Consensus 7229  
TLC Rita 2060  
Ray Rita 8187

ADJ 365 %IMF	BW
3.53	69
ADJ 365 URE	AWW
14.8	670
AYW	1260

Top 3% YW, top 10% WW, top 15% \$B, and top 20% RE.

CED	BW	WW	YW	MILK	CW	MARB	RE	\$W	\$B
+9	+2.0	+67	+126	+24	+40	+61	+68	+56.65	+142.69

## 20 TLC Denver 6062

Angus Bull • 09/19/2016 • 6062 • 18569072

EXAR Upshot 0562B  
EXAR Denver 2002B  
Exar Royal Lass 1067  
Connealy Namesake 10X  
TLC Finks 4063  
TLC Finks 0126

ADJ 365 %IMF	BW
3.77	67
ADJ 365 URE	AWW
14.0	553
AYW	1100

Top 20% YW and RE.

CED	BW	WW	YW	MILK	CW	MARB	RE	\$W	\$B
+8	+2.7	+54	+106	+24	+28	+68	+68	+39.49	+118.80

# Timberland Cattle Angus Bulls (Lots 1-41)

## 21

### TLC Denver 6071

Angus Bull • 09/23/2016 • 6071 • 18569074

EXAR Upshot 0562B  
EXAR Denver 2002B  
Exar Royal Lass 1067  
Connealy Namesake 10X  
TLC Rita 4016  
TLC Rita 2027

ADJ 365 %IMF	BW
3.13	68
ADJ 365 URE	AWW
14.3	528
	AYW
	1083

Top 10% RE, and top 15% YW.

CED	BW	WW	YW	MILK	CW	MARB	RE	\$W	\$B
+6	+2.9	+56	+108	+21	+27	+5.9	+7.6	+37.89	+116.40

## 22

### TLC Denver 6072

Angus Bull • 09/24/2016 • 6072 • 18567139

EXAR Upshot 0562B  
EXAR Denver 2002B  
Exar Royal Lass 1067  
G A R Anticipation  
TLC Lady Rosemond 4104  
B A R Lady Rosemond 047

ADJ 365 %IMF	BW
3.48	67
ADJ 365 URE	AWW
13.5	618
	AYW
	1117

Top 10% YW and RE, and top 20% \$B.

CED	BW	WW	YW	MILK	CW	MARB	RE	\$W	\$B
+8	+2.6	+59	+113	+24	+36	+7.2	+7.8	+44.50	+138.37

## 23

### TLC Denver 6075 DDP

Angus Bull • 09/25/2016 • 6075 • 18569081

EXAR Upshot 0562B  
EXAR Denver 2002B  
Exar Royal Lass 1067  
Boyd Forward 6025  
MF Precision Lady 210 154Z  
MF Precision Lady 210 154

ADJ 365 %IMF	BW
4.02	68
ADJ 365 URE	AWW
13.7	660
	AYW
	1193

Top 10% WW and YW, and top 20% \$B.

CED	BW	WW	YW	MILK	CW	MARB	RE	\$W	\$B
+8	+2.4	+65	+120	+22	+39	+6.4	+5.7	+49.21	+138.09

## 24

### TLC Denver 6085

Angus Bull • 10/03/2016 • 6085 • 18569078

EXAR Upshot 0562B  
EXAR Denver 2002B  
Exar Royal Lass 1067  
Connealy Capitalist 028  
TT Miss Prudence 028W188 136  
TT Miss Prudence W188

ADJ 365 %IMF	BW
3.99	69
ADJ 365 URE	AWW
15.2	631
	AYW
	1074

Top 15% WW and YW.

CED	BW	WW	YW	MILK	CW	MARB	RE	\$W	\$B
+9	+2.2	+62	+110	+24	+32	+6.7	+6.5	+51.80	+123.97

## 25

### TLC Denver 6097 DDP

Angus Bull • 10/16/2016 • 6097 • 18646318

EXAR Upshot 0562B  
EXAR Denver 2002B  
Exar Royal Lass 1067  
B/R New Day 454  
TLC Erica 1019  
TLCobj13776378 16201176 579

ADJ 365 %IMF	BW
4.01	70
ADJ 365 URE	AWW
12.2	586
	AYW
	1063

Top 20% CED.

CED	BW	WW	YW	MILK	CW	MARB	RE	\$W	\$B
+10	+1.6	+52	+95	+27	+30	+7.5	+5.5	+49.48	+110.22

## 26

### TLC Denver 6107 DDP

Angus Bull • 10/24/2016 • 6107 • 18646327

EXAR Upshot 0562B  
EXAR Denver 2002B  
Exar Royal Lass 1067  
Rito 4L60 of 2536 BVND 208  
C W L Blackcap 8041  
Three Trees Blackcap 3588

ADJ 365 %IMF	BW
4.16	67
ADJ 365 URE	AWW
13.9	628
	AYW
	1116

Top 15% MARB, and top 20% CED and YW.

CED	BW	WW	YW	MILK	CW	MARB	RE	\$W	\$B
+10	+1.6	+56	+105	+24	+31	+8.5	+5.1	+46.69	+126.54

## 27

### TLC Denver 6111 OHP

Angus Bull • 10/31/2016 • 6111 • 18646330

EXAR Upshot 0562B  
EXAR Denver 2002B  
Exar Royal Lass 1067  
Mytty In Focus  
MCCO In Focus 724  
MCCO 943G Burgess 523

BW
71
AWW
668
AYW
1150

Actual 9/14/17 %IMF: 4.31 and URE: 13.9.  
Top 20% YW.

CED	BW	WW	YW	MILK	CW	MARB	RE	\$W	\$B
+9	+1.6	+59	+105	+24	I+29	I+7.1	I+4.4	+54.18	+113.64

## 28

### TLC Denver 6115

Angus Bull • 11/08/2016 • 6115 • 18648300

EXAR Upshot 0562B  
EXAR Denver 2002B  
Exar Royal Lass 1067  
G A R Selective  
Plantation Erica 9624  
G A R 208 New Design N624

BW
72
AWW
683
AYW
961

Actual 9/14/17 %IMF: 3.98 and URE: 9.4.  
Top 10% MARB, and top 20% MILK.

CED	BW	WW	YW	MILK	CW	MARB	RE	\$W	\$B
+9	+2.0	+58	+102	+28	I+29	I+9.7	I+4.4	+53.73	+121.77

# Timberland Cattle Angus Bulls (Lots 1-41)

## 29

### TLC Comanchero 6038

Angus Bull • 09/05/2016 • 6038 • 18558497

Connealy Consensus 7229  
 EXAR Comanchero 1022B  
 EXAR Lady Blanche 9056  
 Connealy Final Product  
 TLC Rita 2100  
 Ray Rita 9186

ADJ 365 %IMF	BW
3.83	66
ADJ 365 URE	AWW
12.9	621
AYW	1034

Top 20% CED.

CED	BW	WW	YW	MILK	CW	MARB	RE	\$W	\$B
+10	+2	+49	+91	+22	+23	+63	+55	+42.19	+97.51

## 30

### TLC Comanchero 6043

Angus Bull • 09/07/2016 • 6043 • 18557944

Connealy Consensus 7229  
 EXAR Comanchero 1022B  
 EXAR Lady Blanche 9056  
 EXAR Upshot 0562B  
 TLC Lady 3091  
 W C A Forever Lady 1002

ADJ 365 %IMF	BW
4.07	67
ADJ 365 URE	AWW
12.6	647
AYW	1053

Top 20% CED.

CED	BW	WW	YW	MILK	CW	MARB	RE	\$W	\$B
+10	+1.1	+53	+93	+26	+30	+69	+50	+50.27	+109.72

## 31

### TLC Comanchero 6045

Angus Bull • 09/08/2016 • 6045 • 18557945

Connealy Consensus 7229  
 EXAR Comanchero 1022B  
 EXAR Lady Blanche 9056  
 Connealy Lead On  
 TLC Evergreen 063  
 RAY Evergreen 7150

ADJ 365 %IMF	BW
5.32	66
ADJ 365 URE	AWW
13.2	716
AYW	1158

Top 15% MARB, and top 20% CED and YW.

CED	BW	WW	YW	MILK	CW	MARB	RE	\$W	\$B
+10	+2	+58	+105	+24	+32	+84	+45	+52.23	+123.65



**Lot 31 - TLC Comanchero 6045**

## 32

### TLC Comanchero 6067

Angus Bull • 09/21/2016 • 6067 • 18568967

Connealy Consensus 7229  
 EXAR Comanchero 1022B  
 EXAR Lady Blanche 9056  
 SydGen C C & 7  
 TLC Missie 1138  
 Turner Objective 8060

ADJ 365 %IMF	BW
4.20	70
ADJ 365 URE	AWW
11.7	631
AYW	1108

Top 10% CED.

CED	BW	WW	YW	MILK	CW	MARB	RE	\$W	\$B
+12	+9	+54	+104	+25	+36	+65	+42	+46.38	+125.85

## 33

### TLC Comanchero 6084

Angus Bull • 10/02/2016 • 6084 • 18568961

Connealy Consensus 7229  
 EXAR Comanchero 1022B  
 EXAR Lady Blanche 9056  
 EXAR Upshot 0562B  
 TLC Blackcap 4113  
 C W L Blackcap 0049

ADJ 365 %IMF	BW
4.19	68
ADJ 365 URE	AWW
11.7	607
AYW	1113

Top 20% CED and MARB.

CED	BW	WW	YW	MILK	CW	MARB	RE	\$W	\$B
+10	+1.9	+52	+101	+23	+27	+82	+28	+40.20	+108.82

## 34

### TLC Comanchero 6091

Angus Bull • 10/05/2016 • 6091 • 18574017

Connealy Consensus 7229  
 EXAR Comanchero 1022B  
 EXAR Lady Blanche 9056  
 Ironwood New Level  
 TD-3052-611  
 C W L Violet 3052

ADJ 365 %IMF	BW
3.78	70
ADJ 365 URE	AWW
10.7	498
AYW	858

Top 20% CED.

CED	BW	WW	YW	MILK	CW	MARB	RE	\$W	\$B
+10	+2	+34	+63	+26	+12	+56	+24	+35.69	+63.93

## 35

### TLC Hoover Dam 6021 <sup>DDP</sup>

Angus Bull • 08/26/2016 • 6021 • 18558429

SydGen C C & 7  
 Hoover Dam  
 Erica of Ellston C124  
 Connealy Final Product  
 TLC MS Precision 4095  
 TD MS Precision 703

ADJ 365 %IMF	BW
4.23	64
ADJ 365 URE	AWW
14.0	634
AYW	1040

CED	BW	WW	YW	MILK	CW	MARB	RE	\$W	\$B
+5	+7	+48	+88	+27	+35	+71	+61	+46.20	+122.62

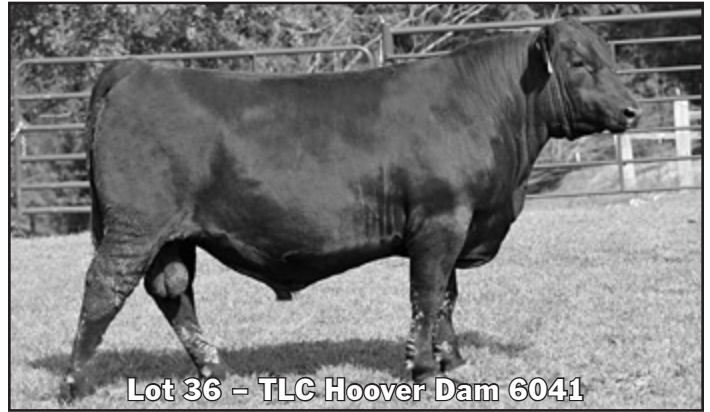


# Timberland Cattle Angus Bulls (Lots 1-41)

## 36 TLC Hoover Dam 6041 Angus Bull • 09/07/2016 • 6041 • 18557943

SydGen C C & 7  
Hoover Dam  
Erica of Ellston C124  
B/R New Day 454  
TLC Pride 1024  
TDCC Ja Car Dreams 908  
Top 15% \$B and top 20% CW.

ADJ 365 %IMF	BW
4.54	70
ADJ 365 URE	AWW
13.0	722
	AYW
	1154



Lot 36 - TLC Hoover Dam 6041

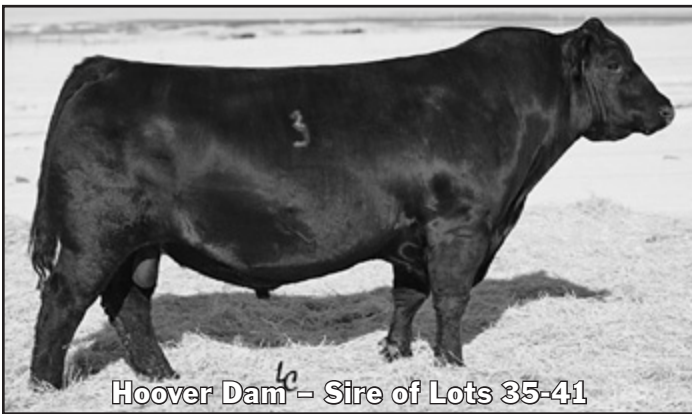
CED	BW	WW	YW	MILK	CW	MARB	RE	\$W	\$B
+8	+2	+58	+102	+27	+46	+70	+52	+56.52	+142.02

## 37 TLC Hoover Dam 6065 Angus Bull • 09/21/2016 • 6065 • 18570320

SydGen C C & 7  
Hoover Dam  
Erica of Ellston C124  
Connealy Final Product  
TLC Blacklass 379 4059  
TLC14845068 15984061 379

ADJ 365 %IMF	BW
4.23	65
ADJ 365 URE	AWW
13.6	619
	AYW
	1083

CED	BW	WW	YW	MILK	CW	MARB	RE	\$W	\$B
+5	+1.2	+51	+93	+26	+35	+67	+59	+46.99	+123.90



Hoover Dam - Sire of Lots 35-41

## 40 TLC Hoover Dam 6104 Angus Bull • 10/24/2016 • 6104 • 18646325

SydGen C C & 7  
Hoover Dam  
Erica of Ellston C124  
EXAR Comanchero 1022B  
TLC Barbaramere 4123  
TLC Barbaramere Nell 1104  
Top 15% RE.

ADJ 365 %IMF	BW
3.70	65
ADJ 365 URE	AWW
13.8	623
	AYW
	1025

CED	BW	WW	YW	MILK	CW	MARB	RE	\$W	\$B
+7	+1.0	+48	+88	+24	+35	+66	+75	+42.74	+125.67

## 38 TLC Hoover 6069 Angus Bull • 09/23/2016 • 6069 • 18570340

SydGen C C & 7  
Hoover Dam  
Erica of Ellston C124  
S S Objective T510 OT26  
Turner Objective 8060  
T R Missie 6202

ADJ 365 %IMF	BW
3.89	66
ADJ 365 URE	AWW
14.2	679
	AYW
	1133

Top 10% \$B, top 15% RE, and top 20% CW.

CED	BW	WW	YW	MILK	CW	MARB	RE	\$W	\$B
+9	+4	+52	+97	+26	+47	+65	+71	+48.08	+149.23

## 39 TLC Hoover Dam 6077 Angus Bull • 09/29/2016 • 6077 • 18568124

SydGen C C & 7  
Hoover Dam  
Erica of Ellston C124  
Bon View New Design 878  
GR Darling 911  
GR Darling 730

ADJ 365 %IMF	BW
4.19	67
ADJ 365 URE	AWW
15.7	718
	AYW
	1163

Top 10% \$B, and top 15% CW and RE.

CED	BW	WW	YW	MILK	CW	MARB	RE	\$W	\$B
+8	+3	+54	+94	+27	+51	+65	+72	+53.62	+151.43

## 41 TLC Hoover Dam 6113 Angus Bull • 11/04/2016 • 6113 • 18648298

SydGen C C & 7  
Hoover Dam  
Erica of Ellston C124  
S A V Final Answer 0035  
TDCC Ja Car Dreams 908  
Ja Car Dreams 201

BW
69
AWW
632
AYW
1056

Actual 9/14/17 %IMF: 3.78 and URE: 11.0.  
Top 20% BW.

CED	BW	WW	YW	MILK	CW	MARB	RE	\$W	\$B
+8	+0	+48	+87	+26	I+32	I+62	I+46	+46.73	+112.82

## Baker Farms Angus Bulls (Lots 42-45)

### 42 Deer Valley Weigh Up 6655

Angus Bull • 08/18/2016 • 6655 • 18677425

Sitz Upward 307R  
Plattemere Weigh Up K360  
Barbara of Plattemere 337  
G A R Predestined  
Deer Valley Blackcap 12139  
Exar Load UP T444

ADJ 365 %IMF	BW
3.61	
ADJ 365 URE	AWW
10.1	593
AYW	847

Top 10% WW and YW, top 15% RE and \$B, and top 20% CW and \$W.

CED	BW	WW	YW	MILK	CW	MARB	RE	\$W	\$B
I+8	+1.9	+65	+113	+23	+48	+69	+73	+57.37	+144.54

### 44 Upchurch Resource 116

Angus Bull • 09/25/2016 • 116 • 18882543

Rito 707 of Ideal 3407 7075  
S A V Resource 1441  
S A V Blackcap May 4136  
O C C Paxton 730P  
Coleman Dixie Erica 0139  
Coleman Dixie Erica 8270

ADJ 365 %IMF	BW
3.45	
ADJ 365 URE	AWW
10.7	529
AYW	907

Top 15% YW and top 20% RE.

CED	BW	WW	YW	MILK	CW	MARB	RE	\$W	\$B
I+6	+2.0	+59	+112	+16	+37	+13	+67	+42.96	+97.19

### 43 BF Comanchero 6001

Angus Bull • 08/22/2016 • 6001 • 18875055

Connealy Consensus 7229  
EXAR Comanchero 1022B  
EXAR Lady Blanche 9056  
Connealy Final Product  
TLC Blackclass 3093  
RAY Blackclass 7302

ADJ 365 %IMF	BW
3.73	78
ADJ 365 URE	AWW
10.5	647
AYW	1001

Top 15% MARB.

CED	BW	WW	YW	MILK	CW	MARB	RE	\$W	\$B
I+9	I+6	I+51	I+94	I+25	I+24	I+.84	I+.40	+56.95	+101.87

### 45 Renown 6018

Angus Bull • 10/13/2016 • 6018 • 18875376

Rito 707 of Ideal 3407 7075  
S A V Renown 3439  
S A V Blackcap May 4136  
S S Objective T510 OT26  
G A R Objective A7020  
G A R I12 Rito 4684

ADJ 365 %IMF	BW
3.14	75
ADJ 365 URE	AWW
10.5	507
AYW	845

Top 5% WW, top 10% YW, and top 20% \$W.

CED	BW	WW	YW	MILK	CW	MARB	RE	\$W	\$B
+4	+2.6	+69	+118	+23	+43	+42	+62	+59.54	+124.76

## Timberland Cattle SimAngus Bulls (Lots 46-62)

### 46 TLCI Wide Range D602 <sup>DDP</sup>

5/8 Simmental 3/8 Angus Bull • 08/23/2016 • D602 • 3163141

S D S Graduate 006X  
CCR Wide Range 9005A  
CCR Ms Apple 9332W  
Nichols Manifest T79  
RWCC Violet Z330  
TurnerNewDesign1407 7143

**Homozygous Polled**

ADJ 365 %IMF	BW
3.17	72
ADJ 365 URE	AWW
15.57	760
AYW	1322

Top 10% RE, top 15% YW, and top 20% MILK and CW.

CED	BW	WW	YW	MILK	CW	MARB	RE	API	TI
11.5	0.0	68.3	111.9	25.3	36.8	0.36	0.95	139.3	76.1



Lot 46 - TLCI Wide Range D602

### 47 TLCI Wide Range D 615 <sup>OHP</sup>

5/8 Simmental 3/8 Angus Bull • 09/07/2016 • D615 • 3159903

S D S Graduate 006X  
CCR Wide Range 9005A  
CCR Ms Apple 9332W  
S S Objective T510 OT26  
TLCI Pureblack 0110  
Circle B Miss Dream On

ADJ 365 %IMF	BW
3.87	70
ADJ 365 URE	AWW
15.18	690
AYW	1059

Top 1% RE, top 20% API.

CED	BW	WW	YW	MILK	CW	MARB	RE	API	TI
12.9	-0.1	68.0	104.5	21.1	31.9	0.36	1.22	145.0	75.5

### 48 TLCI Wide Range D624 <sup>OHP</sup>

5/8 Simmental 3/8 Angus Bull • 09/15/2016 • D624 • 3159912

S D S Graduate 006X  
CCR Wide Range 9005A  
CCR Ms Apple 9332W  
Dixon Blk Legend T686  
SSF Blk Sue A465  
SSF Blk Sue X382

ADJ 365 %IMF	BW
3.66	69
ADJ 365 URE	AWW
15.60	647
AYW	1133

Top 1% RE, top 10% YW and CW, top 15% WW and TI, and top 20% API.

CED	BW	WW	YW	MILK	CW	MARB	RE	API	TI
11.6	0.4	71.8	117.6	24.6	40.7	0.39	1.25	143.1	78.7

# Timberland Cattle SimAngus Bulls (Lots 46-62)

## 49 TLCI Wide Range D625 DDP, OHP 3/4 Simmental 1/4 Angus Bull • 09/15/2016 • D625 • 3159913

S D S Graduate 006X  
CCR Wide Range 9005A  
CCR Ms Apple 9332W  
GW Predestined 773X  
SSF Blk Missy A482  
SSF Blk Louise S832

ADJ 365 %IMF	BW
3.33	71
ADJ 365 URE	AWW
13.91	669
AYW	1078

Top 4% RE, top 15% API, and top 20% TI.

CED	BW	WW	YW	MILK	CW	MARB	RE	API	TI
10.5	0.7	64.8	99.8	23.4	30.4	0.32	1.06	147.6	76.3

## 50 TLCI Wide Range D628 5/8 Simmental 3/8 Angus Bull • 09/20/2016 • D628 • 3159916

S D S Graduate 006X  
CCR Wide Range 9005A  
CCR Ms Apple 9332W  
GW Premium Beef 021TS  
TLCI Traveler A341  
TLCI Traveler 079

**Homozygous Polled**

ADJ 365 %IMF	BW
3.27	67
ADJ 365 URE	AWW
13.96	657
AYW	1200

Top 10% YW and RE, top 15% CW, and top 20% WW.

CED	BW	WW	YW	MILK	CW	MARB	RE	API	TI
13.9	-0.1	70.1	117.7	23.2	40.2	0.25	1.02	136.9	75.0

## 51 TLCI Wide Range D640 5/8 Simmental 3/8 Angus Bull • 10/14/2016 • D640 • 3206764

S D S Graduate 006X  
CCR Wide Range 9005A  
CCR Ms Apple 9332W  
Ellingson Legacy M229  
TLCI Deep Breth Z235  
TLCI2326312 2464438 302

ADJ 365 %IMF	BW
3.69	73
ADJ 365 URE	AWW
13.71	793
AYW	1365

Top 2% WW, top 3% YW, top 4% CW, top 10% RE and TI, and top 20% API.

CED	BW	WW	YW	MILK	CW	MARB	RE	API	TI
12.8	0.5	81.6	128.3	22.5	46.9	0.29	0.98	141.1	81.3

## 52 TLCI Wide Range D643 5/8 Simmental 3/8 Angus Bull • 10/16/2016 • D643 • 3206771

S D S Graduate 006X  
CCR Wide Range 9005A  
CCR Ms Apple 9332W  
Mr Ishee Catalyst  
TLCI Talladega A338  
TLCI Talladega 039

ADJ 365 %IMF	BW
3.75	69
ADJ 365 URE	AWW
14.39	777
AYW	1008

Top 1% RE and top 20% MILK.

CED	BW	WW	YW	MILK	CW	MARB	RE	API	TI
11.9	0.1	66.4	90.5	25.8	23.4	0.36	1.19	136.7	74.2

## 53 TLCI Wide Range D648 DDP 5/8 Simmental 3/8 Angus Bull • 10/28/2016 • D648 • 3206772

S D S Graduate 006X  
CCR Wide Range 9005A  
CCR Ms Apple 9332W  
PVF-J 4P14 Hyb Rookie  
TLCI Evergreen Z221  
TLCI218059214114684 575

**Homozygous Polled**

ADJ 365 %IMF	BW
3.38	71
ADJ 365 URE	AWW
14.47	699
AYW	1129

Top 1% RE, top 15% WW and YW, and top 20% CW.

CED	BW	WW	YW	MILK	CW	MARB	RE	API	TI
11.3	-0.1	71.0	113.1	22.4	37.2	0.20	1.18	131.9	74.0

## 54 TLCI Aftershock D614 3/4 Simmental 1/4 Angus Bull • 09/07/2016 • D614 • 3159902

Hook's Yellowstone 97Y  
CLRS After Shock 604 A  
Hooks Sarita 4S  
SS Deep Breath P229  
TLCI Deep 14776008-360  
A Plus Miss Marshall4005

**Homozygous Polled**

ADJ 365 %IMF	BW
2.94	67
ADJ 365 URE	AWW
11.81	644
AYW	924

Top 2% MILK.

CED	BW	WW	YW	MILK	CW	MARB	RE	API	TI
12.3	-0.6	50.8	81.5	32.1	18.1	0.20	0.51	128.3	63.3

## 55 TLCI Aftershock D617 AMP, CAP, NHP 5/8 Simmental 3/8 Angus Bull • 09/09/2016 • D617 • 3159905

Hook's Yellowstone 97Y  
CLRS After Shock 604 A  
Hooks Sarita 4S  
Mytty In Focus  
TLCI138808182434101 404  
Circle B Deep Breath

ADJ 365 %IMF	BW
3.93	69
ADJ 365 URE	AWW
13.96	748
AYW	1296

Top 4% YW, top 10% WW, CW, and TI, top 15% API, and top 20% MARB.

CED	BW	WW	YW	MILK	CW	MARB	RE	API	TI
11.7	0.7	75.8	123.5	24.8	44.6	0.52	0.47	150.0	82.8

## 56 TLCI Aftershock D627 Purebred Simmental Bull • 09/20/2016 • D627 • 3159915

Hook's Yellowstone 97Y  
CLRS After Shock 604 A  
Hooks Sarita 4S  
Mr NLC Upgrade U8676  
TLCI Carley A315  
Ms PMS Carley 251T

ADJ 365 %IMF	BW
3.75	69
ADJ 365 URE	AWW
14.15	754
AYW	1213

Top 2% TI, top 3% YW, top 5% WW, top 10% CW and API, and top 15% MARB.

CED	BW	WW	YW	MILK	CW	MARB	RE	API	TI
9.4	1.5	78.0	120.1	18.6	43.4	0.32	0.84	143.4	83.1

# Timberland Cattle SimAngus Bulls (Lots 46-62)



Lot 56 - TLCI Aftershock D627

## 57 TLCI Aftershock D644 <sup>AMP</sup> Purebred Simmental Bull • 10/24/2016 • D644 • 3206767

Hook's Yellowstone 97Y  
CLRS After Shock 604 A  
Hooks Sarita 4S  
GW Lucky Dice 187H  
TLCI20020922434094 377  
Circle B Rocket

**Homozygous Polled**

ADJ 365 %IMF	BW
3.39	65
ADJ 365 URE	AWW
12.95	548
	AYW
	1001

Top 15% BW, and top 20% MILK and API.

CED	BW	WW	YW	MILK	CW	MARB	RE	API	TI
11.6	-0.3	52.7	88.2	25.6	22.6	0.18	0.83	136.9	68.2

## 58 TLCI United D605 1/2 Simmental 1/2 Angus Bull • 08/29/2016 • D605 • 3159893

TNT Tuition U238  
W/C United 956Y  
Miss Werning 956W  
Nichols Manifest T79  
TLCI Lass Y11  
Sanhillbgmsf98 Mrrito616

**Homozygous Polled**

ADJ 365 %IMF	BW
3.15	68
ADJ 365 URE	AWW
14.63	584
	AYW
	987

CED	BW	WW	YW	MILK	CW	MARB	RE	API	TI
10.2	-0.1	63.6	104.3	11.9	32.3	0.37	0.67	128.8	72.1



Lot 59 - TLCI United D612

## 59 TLCI United D612 1/2 Simmental 1/2 Angus Bull • 09/07/2016 • D612 • 3159900

TNT Tuition U238  
W/C United 956Y  
Miss Werning 956W  
SS Goldmine L42  
Circle B Goldmine  
Ellis Miss Lass 4701

**Homozygous Polled**

ADJ 365 %IMF	BW
3.20	68
ADJ 365 URE	AWW
13.75	621
	AYW
	1147

Top 15% YW and top 20% CW.

CED	BW	WW	YW	MILK	CW	MARB	RE	API	TI
11.3	-0.4	66.5	110.9	16.8	35.8	0.37	0.54	129.1	74.5

## 60 TLCI United D634 <sup>CAP, DDP</sup> 1/2 Simmental 1/2 Angus Bull • 10/02/2016 • D634 • 3160121

TNT Tuition U238  
W/C United 956Y  
Miss Werning 956W  
Ellingson Legacy M229  
TLCI Erica 0128  
R & R Erica 842

**Homozygous Polled**

ADJ 365 %IMF	BW
3.65	62
ADJ 365 URE	AWW
13.54	445
	AYW
	990

Top 15% YW and TI, and top 20% CW, MARB, and API.

CED	BW	WW	YW	MILK	CW	MARB	RE	API	TI
12.2	-0.7	65.0	112.7	21.4	36.6	0.56	0.71	142.1	79.8

## 61 TLCI Rancher D622 Purebred Simmental Bull • 09/15/2016 • D622 • 3159910

R&R Chamberlain X744  
JF Rancher 222Z  
JF Ebony's Joy 734T  
ML Black Design P223  
SSF Blk Nann X343  
SSF Black Nann M619

ADJ 365 %IMF	BW
3.11	74
ADJ 365 URE	AWW
16.34	705
	AYW
	1199

Top 4% RE, top 10% WW and TI, top 15% YW, and top 20% CW.

CED	BW	WW	YW	MILK	CW	MARB	RE	API	TI
7.0	1.9	73.9	108.4	24.3	36.8	0.27	1.15	128.9	78.8

## 62 TLCI Rancher D655 3/4 Simmental 1/4 Angus Bull • 11/20/2016 • D655 • 3206686

R&R Chamberlain X744  
JF Rancher 222Z  
JF Ebony's Joy 734T  
Ellingson Legacy M229  
TLCI Blackclass Z226  
TLC Blackclass 0102

**Homozygous Polled**

ADJ 365 %IMF	BW
3.12	70
ADJ 365 URE	AWW
15.00	612
	AYW
	1124

Top 10% WW, top 15% YW and TI, and top 20% CW.

CED	BW	WW	YW	MILK	CW	MARB	RE	API	TI
11.2	0.7	73.6	111.5	22.5	37.1	0.38	0.82	134.9	78.3

# Timberland Cattle Commercial Angus Bull

**63** **TLCI Denver 6027** AMC, DDF  
 Angus Bull • 09/01/2016 • 6027 • Commercial

**Sire:** EXAR Upshot 0562B      **Dam:** G A R Solution  
 EXAR Denver 2002B      Bentons Solution of 3835-117  
 Exar Royal Lass 1067      Bentons B878-3835

US Adj. %IMF	BW
5.12	68
US Adj. RE	AWW
11.80	570
	AYW
	943

## Timberland Cattle Commercial Females

**Commercial females will be sold in groups of up to 3 lots. High bidder can select 1, 2, or 3 lots. The remaining lots will then be sold without an option to pick. All commercial females are sired by and/or bred to Timberland Cattle bulls.**

**Commercial Pairs:** Lots 64-83 are Angus and SimAngus females with calves at side or due by sale time to Angus and SimAngus bulls.

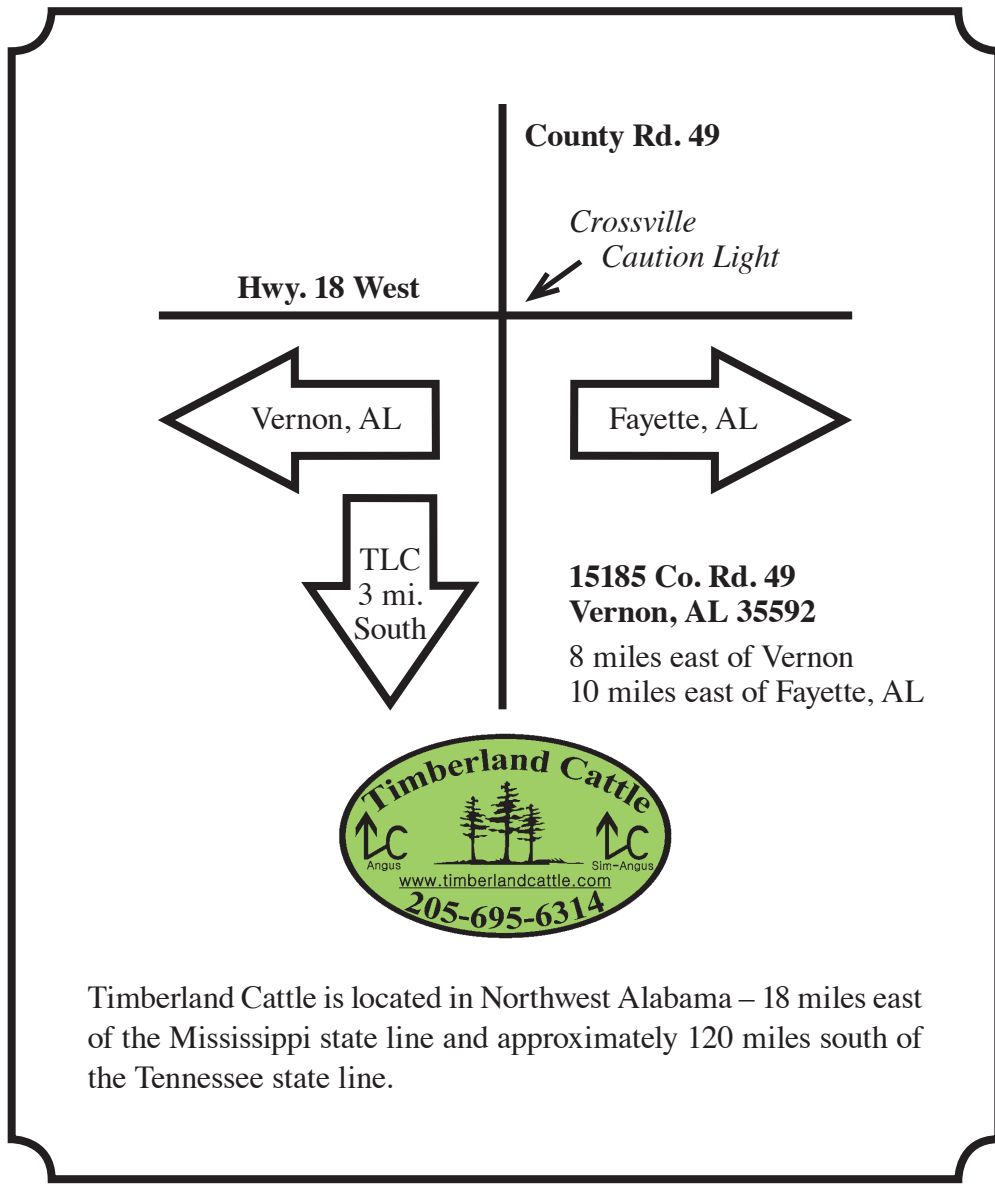
	Lot Number	Herd ID	Birthdate	Color	Calf Information			
					Lot Number	Herd ID	Sex	Birthdate
	64	456	Sept. 2014	Black	64A	767	H	9/26/17
	65	480	Sept. 2014	Black	65A	768	H	9/26/17
	66	505	Sept. 2015	Black	66A	744	B	9/3/17
	67	514	Sept. 2015	Black	67A	741	H	9/1/17
	68	521	Sept. 2015	Black	68A	734	B	8/27/17
	69	544	Sept. 2015	Black	69A	752	B	9/8/17
	70	476	Sept. 2014	Black				
	71	487	Sept. 2014	Black				
	72	506	Sept. 2015	Black				
	73	580	Sept. 2015	Black				
	74	19	Sept. 2013	Black				
	75	113	Sept. 2013	Black				
	76	151	Sept. 2013	Black				
	77	162	Sept. 2013	Black				
	78	170	Sept. 2013	Black				
	79	231	Sept. 2013	Black				
	80	409	Sept. 2013	Black				
	81	66	Sept. 2014	Black				
	82	105	Sept. 2014	Black				
	83	320	Sept. 2014	Black				



# Timberland Cattle Commercial Females

## Commercial Open Heifers

	Lot Number	Herd ID	Birthdate	Color	Breed	
	84	608	Sept. 2016	Black	SimAngus	
	85	628	Sept. 2016	Black	Angus	
	86	629	Sept. 2016	Black	SimAngus	
	87	630	Sept. 2016	Black	SimAngus	
	88	633	Sept. 2016	Black	Angus	
	89	634	Sept. 2016	Black	Angus	
	90	636	Sept. 2016	Black	Angus	
	91	637	Sept. 2016	Black	Angus	
	92	642	Sept. 2016	Black	SimAngus	
	93	643	Sept. 2016	Black	SimAngus	
	94	644	Sept. 2016	BWF	SimAngus	
	95	650	Sept. 2016	Black	SimAngus	
	96	652	Sept. 2016	Black	Angus	
	97	653	Sept. 2016	Black	Angus	
	98	658	Sept. 2016	Black	Angus	
	99	663	Sept. 2016	Black	Angus	
	100	670	Sept. 2016	Black	Angus	
	101	671	Sept. 2016	Black	SimAngus	
	102	679	Sept. 2016	Black	Angus	
	103	689	Sept. 2016	Black	Angus	



Three 65" television screens will show videos of the cattle to the bidders during the auction. Bids will be taken by the ringmen and auctioneer as usual; but animals will not be traveling through a sale ring. Cattle will be on site and available for loadout immediately following the sale. Around October 25, videos of the animals can be viewed online at [www.DVAuction.com](http://www.DVAuction.com); or you can simply click on the video link on our website at [www.timberlandcattle.com](http://www.timberlandcattle.com).

***Please bring this catalog  
with you to the sale.***



**Timberland Cattle**  
15185 County Road 49  
Vernon, AL 35592

**FIRST CLASS**

# 7th Annual Black Angus & SimAngus Fall Bull Sale



Lot 61  
TLCI Rancher D622

**Saturday, November 18, 2017, Noon  
on the Farm  
Vernon, Alabama**

For more information or to view the  
animals, [www.timberlandcattle.com](http://www.timberlandcattle.com)  
Email: [timberlandcattle@centurytel.net](mailto:timberlandcattle@centurytel.net)

**DVAuction**  
Broadcasting Real Time Auctions

*Please bring this catalog  
with you to the sale.*

## **Angus AI Sires**

EXAR Untapped 4701B  
EXAR Denver 2002B  
EXAR Comanchero 1022B  
Hoover Dam

## **SimAngus AI Sires**

CCR Wide Range 9005A  
CLRS After Shock 604A  
W/C United 956Y  
JF Rancher 222Z