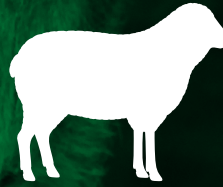


ALABAMA COOPERATIVE EXTENSION SYSTEM

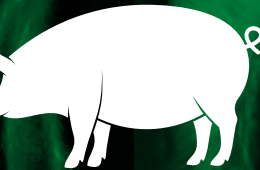
ALABAMA 4-H STATE

20



19

LIVESTOCK JUDGING CONTEST



Registration Packet and Instructions

Tuesday, June 18, 2019

Stanley Wilson Beef Teaching Unit | Auburn University



4-H Livestock Judging Contest

2019 Registration Packet and Instructions

ELIGIBILITY

Competition is open to enrolled members of Alabama 4-H. 4-H membership is available for youth ages 9 to 18. Age is calculated on December 31 of the current 4-H year. To be eligible for competition at events held between August 1, 2018 and July 31, 2019, the member must be 9 years old prior to January 1, 2019.

The 2019 State 4-H Livestock Judging Contest will consist of three different age divisions:

- Junior Division: 4-H members who are between 9 and 11 years old before January 1, 2019.
- Intermediate Division: 4-H members who are 12 or 13 years old before January 1, 2019.
- Senior Division: 4-H members who are between 14 and 18 years old before January 1, 2019.

INDIVIDUALS WITH SPECIAL NEEDS

4-H members with special needs are requested to provide written documentation by JUNE 5 to:

Jason P'Pool, Extension specialist
Youth Animal Science Programs
112 Upchurch Hall
Auburn University, AL 36849
E-mail: jrp0039@auburn.edu

Entry in the contest is available through 4HOnline. Deadline for entry is Friday, May 31. The registration fee for all participants (including Extension personnel, parents, and adult volunteer leaders) is \$20. Make checks payable to AU-Animal Sciences-Youth and mail to:

Jason P'Pool, Extension specialist
Youth Animal Science Programs
112 Upchurch Hall
Auburn University, AL 36849

There is no longer a requirement to qualify in district competition to advance to the state contest. The 2019 State 4-H Livestock Judging Contest is open to all 4-H members for participation and competition. Competition is for individuals and for teams that shall consist of a minimum of three members. A county team is made up of a minimum of three individuals in an age division with no upper limit of participants on the team with the top three

scores comprising the team total. For example, if your county has three Junior age members or ten Junior age members, the county still has one team with the top three scores counting. As a coach, you do not have to designate which members are on the team and which members are considered alternates; the tabulation software puts all your members together as a team and then sorts the top three.

Only one team per county per age group is permitted. There is no limit to the number of individuals from a county that can participate. If a county has two or more distinct 4-H clubs each having a separate and distinct livestock judging team, the county may have a team representing each separate and distinct club.

Teams are to report to the Stanley Wilson Beef Teaching Unit (500 Shug Jordan Parkway, Auburn University, AL) for check-in and instructions by 8:30 a.m. The contest begins promptly at 9 a.m. Winning individuals and teams will be announced and recognized at the conclusion of the state contest.

FALL CONTESTS

The first place senior division team will have the option to represent Alabama at the American Royal 4-H Livestock Judging Contest in Kansas City, Missouri (tentative date, Thursday, October 24, 2019).

Alabama 4-H All-Star Livestock Judging Team:

- The top 15 individuals (and potentially other senior age contestants that have been a member of past All-Star Teams) in the senior division will be invited to participate in the Alabama 4-H All-Star Livestock Judging Workout (tentative dates, July 22-24, 2019) to earn one of eight spots on the 4-H All-Star Livestock Judging Team. The 4-H All-Star Livestock Judging workouts will emphasize education, specifically notetaking, preparing and presenting oral reasons, answering questions, and interpreting scenario/data.
- Once the four members of the 4-H All-Star Livestock Judging Team have been identified, the team will meet at least monthly to practice in either face-to-face meetings or through the use of technology.

- This team will represent Alabama at the National 4-H Livestock Judging Contest at the North American International Livestock Exposition in Louisville, Kentucky (Tentative date: Tuesday, November 19, 2019).
- The 4-H All-Star Livestock Judging Team will also compete in one other national level judging contest (as funding allows). This event may be one of the following, and it is expected that Alabama 4-H All-Star Livestock Judging Team members will make themselves available on the dates mentioned above.
 - AKSARBEN 4-H Livestock Show, Grand Island, Nebraska.
Tentative date: Sunday, September 29, 2019.
 - Southern Regional Livestock Judging Contest, Raleigh, North Carolina.
Tentative date: Saturday, November 2, 2019.
 - Purdue Boilermaker/Stockman Livestock Judging Contest, West Lafayette, Indiana. Tentative date: October 18–19, 2019.

INSTRUCTIONS

1. All contestants must have a pencil or pen. All contestants must bring their own notebooks or paper for taking notes for oral reasons and questions. Junior contestants may use their notes or the provided template (see page 10), when they give their oral reasons. Intermediate and Senior contestants may not use their notes in giving reasons or answering questions.
2. Participants will be provided a contestant number that will identify them throughout the duration of the contest.
3. Juniors will judge six to eight animal classes. Intermediate and Seniors will judge eight to ten animal classes. Contestants will not be allowed to handle any animals during the contest.
4. Juniors will have three nontraditional classes (one each for beef, swine, and sheep/goats—see attached page 4 for more information) and will give one set of oral reasons on a beef class. Intermediates will give oral reasons on two classes (one each on beef and swine) and will have two questions classes (on either sheep, goats, or swine). Seniors will give four sets of oral reasons (two on beef cattle, and one each on sheep and swine) and will have a two questions classes (on either sheep, goats, or swine). Reasons and questions classes will be identified during the contest. Senior and Intermediate contestants will have a production scenario and some type of performance data and/or EPDs to aid in placing in at least two classes (a breeding beef cattle class and a breeding sheep class). The scenario classes may or may not necessarily be oral reasons and/or questions classes. Contestants will be assigned to groups at the

beginning of the contest. They must stay with their assigned group leader until all classes are judged. Only group leaders and ring stewards will be allowed in the contest area.

5. Because members from a county may be in the same group, instruct your members about not talking to anyone other than a group leader. Talking or conferring during the contest is prohibited. The contestant cannot wear any markings, clothing items, or jewelry that reveals identity or area of residency. All forms of tobacco use are prohibited. Personal communication devices are prohibited. Contestants talking to anyone other than a group leader may be disqualified.
6. Twelve minutes will be allowed for nonreasons/questions classes. Contestants will be allowed 15 minutes to evaluate reasons/questions classes. Signals will be given to start the class and at various intervals to indicate time remaining. When the final signal is given, cards will be collected.
7. Lunch will be provided for all contestants during a break period in the contest. Coaches and leaders should plan to meet their contestants at the conclusion of their contests.
8. The contest will start promptly at 9 a.m. for all contestants. Once the contest has started, no additional contestants will be allowed to participate.
9. Contestants cannot have taken a postsecondary course in livestock evaluation.

More Information

Jason P'Pool
Extension specialist
Youth Animal Science Programs
112 Upchurch Hall
Auburn University, AL 36849
E-mail: jrp0039@auburn.edu
Cell: 334-703-1047
Office: 334-844-1540



www.aces.edu | www.alabama4h.com

4HYD-2255

The Alabama Cooperative Extension System (Alabama A&M University and Auburn University) is an equal opportunity educator and employer. Everyone is welcome!
© 2019 Alabama Cooperative Extension System. All rights reserved.

Below is an example of Nontraditional Beef Cattle Class. On the day of competition, sheep/goats and swine will also be included. Junior age contestants will view a PowerPoint slideshow (similar to slides below) and will mark the correct answer on a judging card.



A. Chianina
C. Charolais

B. Limousin
D. Shorthorn

2



A. Brangus
C. Limousin

B. Hereford
D. Red Angus

3



A. Maine Anjou
C. Red Poll

B. Angus
D. Shorthorn

4



A. Knee
C. Pastern

B. Stifle
D. Hock

5



A. Fore rib
C. Dewclaw

B. Sheath
D. Flank

6



A. Tailhead
C. Hook Bone

B. Switch
D. Crest

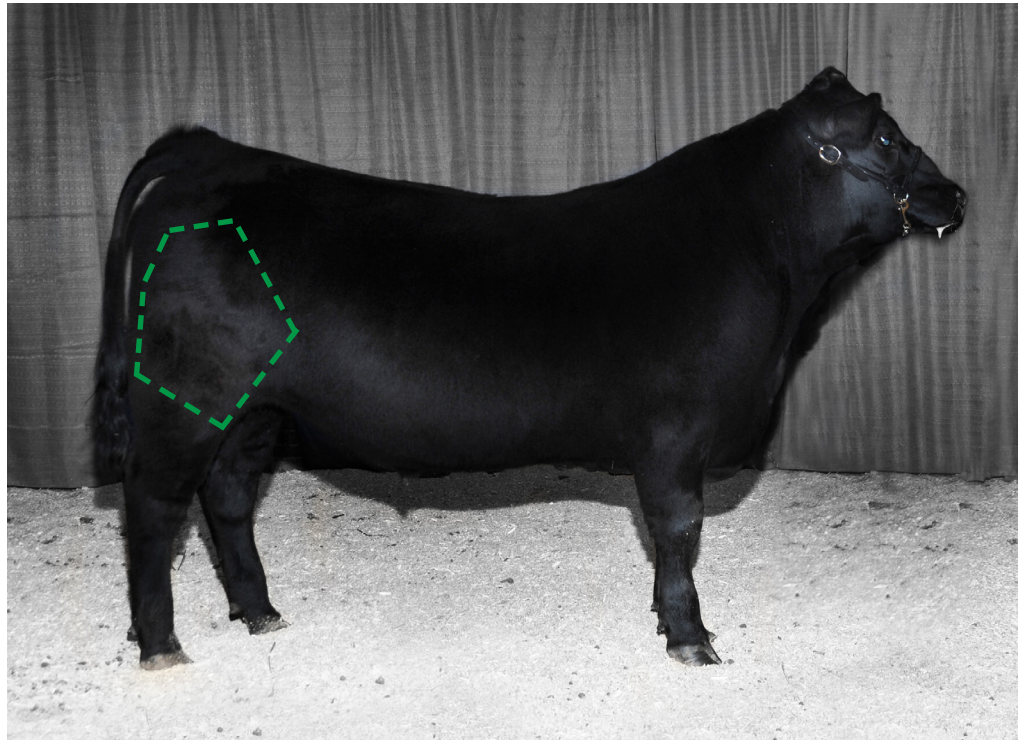
7



A. Chuck
C. Loin

B. Brisket
D. Plate

8



A. Chuck
C. Loin

B. Rump
D. Round

(Beef Cattle EPDs)

9

Which bull's calves should produce the largest rib-eye steaks?

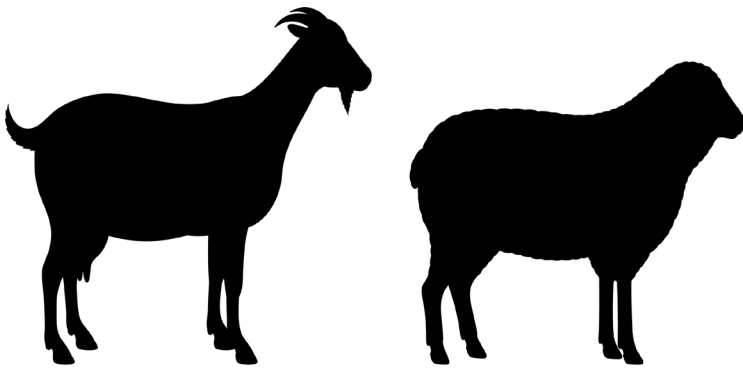
| Bull | Calving Ease Direct (CED) | Weaning Weight (WW) | Milk (Milk) | Yearling Weight (YW) | Rib Eye Area (REA) | Marbling (MARB) |
|------|---------------------------|---------------------|-------------|----------------------|--------------------|-----------------|
| A | +12 | +12 | +20 | +25 | -1.1 | -0.02 |
| B | +16 | +15 | +18 | +18 | -0.3 | +0.05 |
| C | -2 | +22 | +30 | +52 | +0.4 | +0.08 |
| D | +9 | +35 | +22 | +39 | <u>+1.2</u> | +0.12 |

(Beef Cattle EPDs)

10

Which bull's calves should weigh the least at a year old?

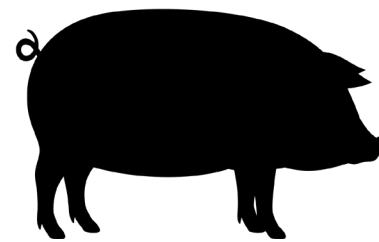
| Bull | Calving Ease Direct (CED) | Weaning Weight (WW) | Milk (Milk) | Yearling Weight (YW) | Rib Eye Area (REA) | Marbling (MARB) |
|------|---------------------------|---------------------|-------------|----------------------|--------------------|-----------------|
| A | +12 | +12 | +20 | +25 | -1.1 | -0.02 |
| B | +16 | +15 | +18 | <u>+18</u> | -0.3 | +0.05 |
| C | -2 | +22 | +30 | +52 | +0.4 | +0.08 |
| D | +9 | +35 | +22 | +39 | +1.2 | +0.12 |



Sheep / Goat Nontraditional

Similar to beef cattle, this class will have the following:

- Breed examples
- Animal parts
- Meat cut diagrams
- EPDs



Swine Nontraditional

Similar to beef cattle, this class will have the following:

- Breed examples
- Animal parts
- Meat cut diagrams
- EPDs



Beef Heifers

Junior Oral Reasons Template

I placed this class of _____ heifers _____
 (Class Name) (Animal #) (Animal #) (Animal #) (Animal #)

TOP PAIR REASONS

I placed _____ over _____ in the top pair because she was:
 (Animal #) (Animal #)

(Circle all the answers that describe your reasons or write your own reasons on the line below.)

More Structurally Correct Higher Volumned Nicer Balanced Heavier Muscled Faster Growing More Feminine

I grant that _____ was:
 (Animal #)

(Circle all the answers that describe your reasons or write your own reasons on the line below.)

More Structurally Correct Higher Volumned Nicer Balanced Heavier Muscled Faster Growing More Feminine

But I faulted _____ because she was:
 (Animal #)

(Circle all the answers that describe your reasons or write your own reasons on the line below.)

More Structurally Correct Higher Volumned Nicer Balanced Heavier Muscled Faster Growing More Feminine

MIDDLE PAIR REASONS

I placed _____ over _____ in the top pair because she was:
 (Animal #) (Animal #)

(Circle all the answers that describe your reasons or write your own reasons on the line below.)

More Structurally Correct Higher Volumned Nicer Balanced Heavier Muscled Faster Growing More Feminine

I grant that _____ was:
 (Animal #)

(Circle all the answers that describe your reasons or write your own reasons on the line below.)

More Structurally Correct Higher Volumned Nicer Balanced Heavier Muscled Faster Growing More Feminine

But I faulted _____ because she was:
 (Animal #)

(Circle all the answers that describe your reasons or write your own reasons on the line below.)

More Structurally Correct Higher Volumned Nicer Balanced Heavier Muscled Faster Growing More Feminine

BOTTOM PAIR REASONS

I placed _____ over _____ in the top pair because she was:
 (Animal #) (Animal #)

(Circle all the answers that describe your reasons or write your own reasons on the line below.)

More Structurally Correct Higher Volumned Nicer Balanced Heavier Muscled Faster Growing More Feminine

I grant that _____ was:
 (Animal #)

(Circle all the answers that describe your reasons or write your own reasons on the line below.)

More Structurally Correct Higher Volumned Nicer Balanced Heavier Muscled Faster Growing More Feminine

But I faulted _____ because she was:
 (Animal #)

(Circle all the answers that describe your reasons or write your own reasons on the line below.)

More Structurally Correct Higher Volumned Nicer Balanced Heavier Muscled Faster Growing More Feminine



4-H Livestock Judging Contest

Potential Resources

The following is a list of references that will assist in preparing for 4-H Livestock Judging, Quizbowl, Meats Judging, and Skillathon contests that involve beef, sheep, meat goat, and swine. Actual references may deviate from this list in an effort to keep current with a rapidly changing livestock industry.

STANDARD REFERENCES

No endorsement of resources not related to or produced by 4-H is granted or implied by 4-H. 4-H is not responsible for the information found through these resources nor does it endorse them or their content.

- 4H 134R Swine Resource Handbook for Market and Breeding Projects – The Ohio State University
- 4H 194R Sheep Resource Handbook for Market and Breeding Projects – The Ohio State University
- 4H 117R Beef Resource Handbook for Market and Breeding Projects – The Ohio State University
- 4H 135R Goat Resource Handbook – The Ohio State University
- The 4-H Meat Goat Project: An Introduction: <http://www.uwo.edu/4-h/projects/goats/meatgoats.html>
- Texas A&M University Meat Goat Resources: <http://animalscience.tamu.edu/files/2012/04/AS34060-meatgoatguide3.pdf>
- North Carolina State University Meat Goat Materials: http://www.cals.ncsu.edu/an_sci/extension/animal/4hyouth/Meat%20Goats.htm
- Kentucky 4-H Livestock Skillathon Information: <http://afs4hyouth.ca.uky.edu/skillathon>
- Penn State University Meat Goat Materials: <http://bedford.extension.psu.edu/agriculture/goat/Goat%20Lessons.htm>
- Langston University Goat Materials: Training & Certification for Meat Goat Producers: <http://www2.luresext.edu/index.htm>

4-H MATERIALS AVAILABLE

<http://www.4-h.org/resource-library/curriculum/plant-animal-science-curriculum/>

- 08065 Swine 1: The Incredible Pig
- 08066 Swine 2: Putting the Oink in Pig
- 08067 Swine 3: Going Whole Hog
- 08068 Swine - Helper's Guide
- 08143 Beef 1: Bite into Beef
- 08144 Beef 2: Here's the Beef
- 08145 Beef 3: Leading the Charge
- 08146 Beef - Helper's Guide
- 06367 Sheep 1: Rams, Lambs and You
- 06368 Sheep 2: Shear Delight
- 06369 Sheep 3: Leading the Flock
- 06370 Sheep - Helper's Guide
- 07909 Meat Goat 1: Just Browsing
- 07910 Meat Goat 2: Get Growing with Meat Goats
- 07911 Meat Goat 3: Meating the Future
- 07912 Meat Goat - Helper's Guide

BEEF CATTLE HANDBOOKS

<https://www-mwps.sws.iastate.edu/catalog/livestock/beef/beef-cattle-handbook-cd>

- ANR-1100, Alabama Beef Cattle Producers Guide
- ANR-1323, Alabama Beef Cattle Pocket Guide

SHEEP PRODUCTION HANDBOOKS

http://www.sheepusa.org/?page=site/text&nav_id=42c985d7b36d445107825b11f21ff35b

- Sheep 101 - <http://www.sheep101.info/>
- Sheep 201 - <http://www.sheep101.info/201/>
- ANR-1296, Alabama Meat Goat & Sheep Producers Small Ruminant Pocket Guide

PORK INDUSTRY HANDBOOKS

<https://mdc.itap.purdue.edu/>

- National Pork Board Youth Materials
- Youth PQA Plus® Youth Manual: <http://www.pork.org/filelibrary/YouthPQAPlus/YPOAmanual.pdf>
- Pork Checkoff Quick Facts Publication: <http://viewer.zmags.com/publication/5bb6aa6d#/5bb6aa6d/1>
- Pork Checkoff's Pork 100 course can be ordered by calling 800-456-PORK or through the Pork Store by following: <http://egashops.directedje.com/PorkStoreProducer/product-listing.asp?CID=25>

CURRENT EVENT REFERENCES

A small percentage of questions will be based on current events in the beef, sheep, meat goat, and swine industries. Studying from these may appear to be overwhelming, but keep these points in mind. Think about major issues that have affected the livestock industry such as animal diseases, exports, animal ID, environmental issues, and regulatory changes. The following online resources may be used to develop these questions:

- American Sheep Industry Association website at www.sheepusa.org
- National Cattlemen's Beef Association website at <http://www.beefusa.org/>
- National Pork Board website at www.pork.org
- American Meat Institute website at <http://www.meatami.com/>
- Pork Magazine (questions related to current industry issues, January to December 2016) website at www.porkmag.com
- Beef Magazine (questions related to current industry issues, January to December 2016) website at www.beef-mag.com
- National Hog Farmer Magazine (questions related to current industry issues, January to December 2016), website at <http://nationalhogfarmer.com/>
- Meatingplace.com (an on-line community for red meat and poultry processor in North America, questions related to current industry issues, January to December 2016) website at www.meatingplace.com
- Drovers CattleNetwork (questions related to current industry issues, January to December 2016) website at <http://www.cattlennetwork.com/>
- The BeefBlog (questions related to current industry issues, January to December 2016) website at <http://www.thebeefblog.com>
- American Boer Goat Association (questions related to current industry issues, January to December 2016) website at <http://www.abga.org/>
- United States Boer Goat Association (questions related to current industry issues, January to December 2016) website at <http://usbga.org/content/>
- Alabama Cattlemen's Magazine (2017 issues)

LIVESTOCK JUDGING MATERIALS

- Pennsylvania 4-H Livestock Judging Manual: http://afs4hyouth.ca.uky.edu/files/judging/Pennsylvania_4-H_Livestock_Judging_Manual.pdf
- South Dakota State University Livestock Judging Manual: http://afs4hyouth.ca.uky.edu/files/judging/South_Dakota_State_University_Livestock_Judging_Manual_YD4H402.pdf
- University of Kentucky-Judging Performance Classes: http://afs4hyouth.ca.uky.edu/files/judging/Judging_Performance_Classes_ASC-167.pdf
- University of Kentucky-Preparing and Giving Oral Reasons: http://afs4hyouth.ca.uky.edu/files/judging/Oral_Reasons_ASC-166.pdf
- Texas A&M University-Various Youth Livestock (Meat and Equine) Publications: <http://animalscience.tamu.edu/youth-projects/>
- Kansas 4-H Livestock Judging Guide: <http://extension.udel.edu/4h/files/2012/02/LivestockJudgingManualKansas.pdf>

MEAT JUDGING MATERIALS

- American Meat Science Association-Meat Judging Resources: <http://www.meatscience.org/students/meat-judging-program/meat-judging-resources>
- American Meat Science Association-National 4-H Meat Judging Contest <http://www.meatscience.org/students/meat-judging-program/national-4-h-meat-judging>