

ARAPAHOE COUNTY FAIR

★★★★
JULY
22-25
2021



Public Competitions Rule Book

— Entries Displayed July 22-25 —

PRE-ENTRY DEADLINES

Creative Arts: Wednesday, July 14 | Home Harvested & Home Grown: Friday, July 16



CREATIVE ARTS

Visual Arts & Fiber Arts

Exhibit Check-In and Walk-In Entry:

- Monday, July 19 & Tuesday, July 20



HOME HARVESTED

Vegetables & Herbs

Exhibit Check-In, Walk-In Entry & Judging

- Wednesday, July 21



HOME GROWN

Flowers, Grasses & Arrangements

Exhibit Check-In, Walk-In Entry & Judging

- Thursday, July 22

Show your skills, and be part of a fun community tradition. Featuring...

- Adult and youth competitions
- Feedback from judges
- Prizes and bragging rights
- Streamlined book and entry process
- Chance to display your work



ARAPAHOE COUNTY
OPEN SPACES

ARAPAHOE COUNTY FAIRGROUNDS AND PARK

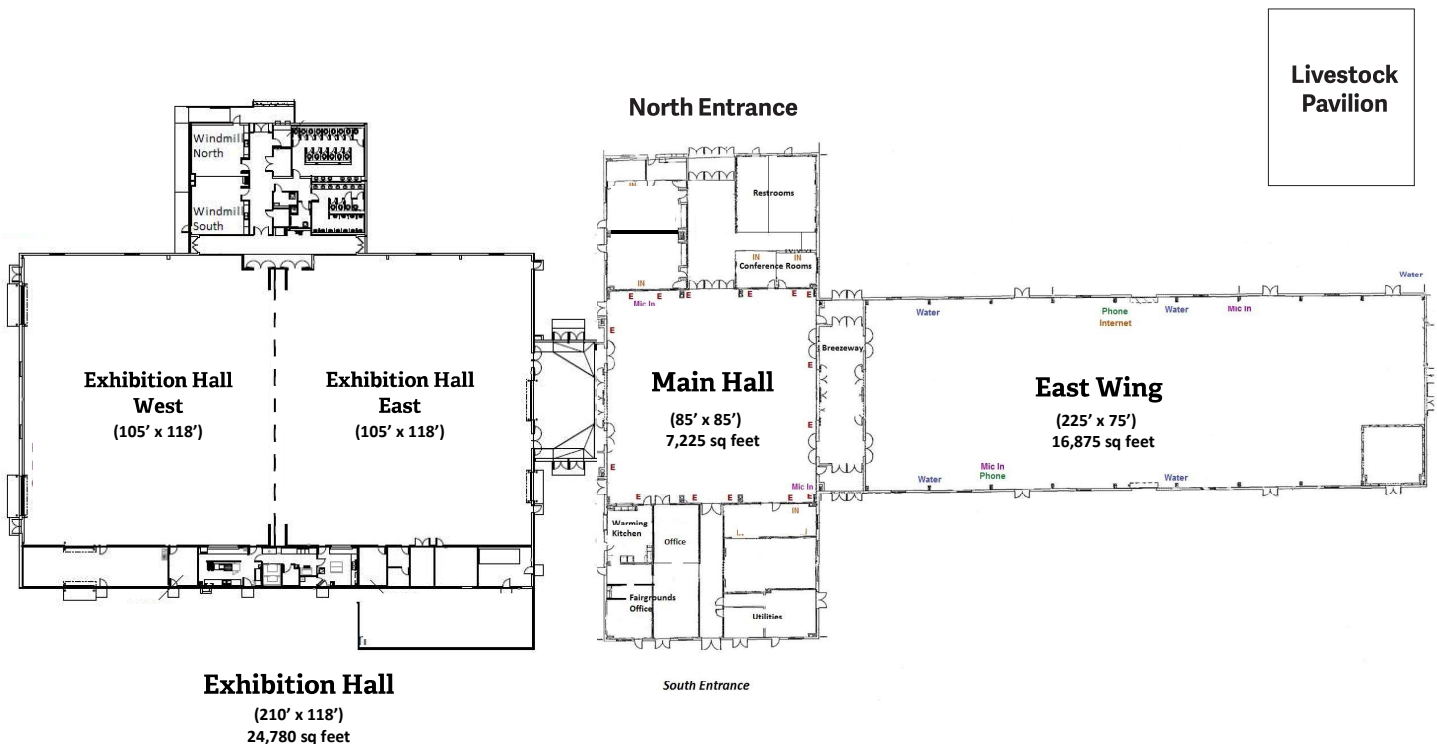
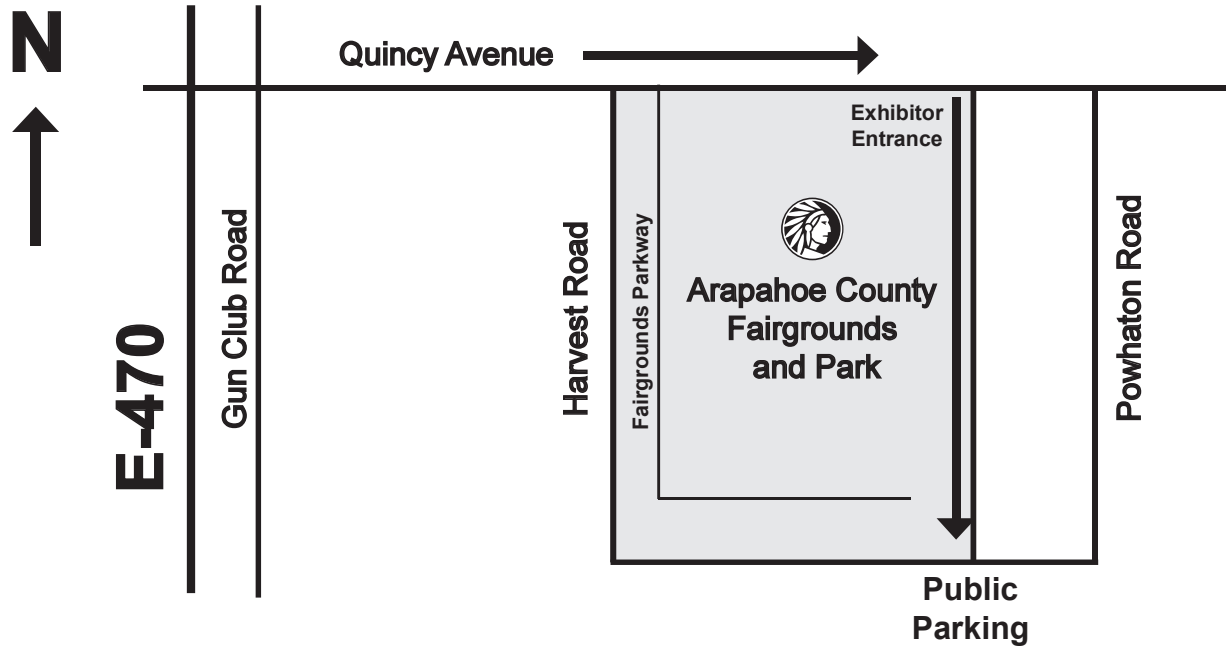
25690 E. Quincy Ave., Aurora, CO 80016 (East of E-470 on Quincy)

WWW.ARAPAHOECOUNTYFAIR.COM

Driving Directions

- Take the East Quincy Avenue exit off of E-470. The automatic toll to leave E-470 is \$1.40. Go east on East Quincy Avenue approximately 2.5 miles to the Arapahoe County Fairgrounds and Regional Park. You will pass the main entrance to the Fairgrounds and take your next right turn on Powhatan Road. Continue straight down Powhatan until you see the signs to turn right to the public parking at the Fairgrounds.

***Exhibitors please come in the exhibitor entrance off Quincy**



**2021 ARAPAHOE COUNTY
PUBLIC COMPETITION EVENTS**

made possible by the

ARAPAHOE COUNTY BOARD OF COUNTY COMMISSIONERS

5334 S. Prince St.
Littleton, CO 80120
303-795-4630

Carrie Warren-Gully, District #1
Chair Pro-tem

Nancy N. Sharpe, District #2
Jeff Baker, District #3 –
Finance Officer

Nancy Jackson, District #4 - Chair
Bill Holen, District #5

ARAPAHOE COUNTY FAIRGROUNDS & REGIONAL PARK

25690 E. Quincy Ave.
Aurora, CO 80016
303-795-4955
(East of E-470 on Quincy)

Shannon Carter, Director of Open Spaces
Glen Poole, Open Space Operations Manager
Matt Bixenman, Fairgrounds Operation Supervisor

COLORADO STATE UNIVERSITY EXTENSION - ARAPAHOE COUNTY

6934 S Lima St.
Suite B
Centennial, CO 80112
303-730-1920

Shannon Carter, Director of Open Spaces
Tim Aston, CSU Arapahoe County Extension Director
Sheila Gains, Family & Consumer Science Extension Agent
Ethan Cahill, 4-H Youth Development Extension Agent
Shaylen Florez, 4-H Program Coordinator
Lisa Mason, Horticulture Extension Agent

Lucinda Greene, Horticulture Programs Coordinator
Taylor McKinney, FLTI Coordinator
Claudia Meeks, 4-H Outreach Supervisor
Jean Walton, Office Coordinator
Briana Gonzales, Program Assistant

2021 ARAPAHOE COUNTY FAIR PLANNING COMMITTEE

Wayne Clark
Deb Deitchel
James Griffin

Brian Hanlon
Audra Moyer
Jeff Moyer

Kathy McDaniel
Darrren Osbment
Katy Vincent

ARAPAHOE COUNTY VOLUNTEER CONNECTIONS

Nira Duvan, Volunteer Coordinator 303-738-7938

ARAPAHOE COUNTY COMMUNICATION & ADMINISTRATIVE SERVICES

303-795-5467

Michelle Halstead, Director of Communication & Administrative Services
Luc Hatlestad, Public Information Officer
Chris Henning, Communications Manager
Tim Mulvey, Print Services Manager
Lizzie Mayer, Communications Business Partner, Open Spaces

PUBLIC COMPETITIONS TABLE OF CONTENTS

County Fair Admission Information	2
Schedule of Events	3
Creative Arts (Includes Visual & Fiber Arts)	4 – 9
Creative Arts Exhibitor Rules & Information	4 - 5
Creative Arts Entry Form	17
Entry Tags	19 & 21
Visual Arts	
Photography	5 - 6
Fine Arts	6
Fiber Arts	
Quilts	7 - 9
Knitting	9
Crochet	9
Home Harvested (Includes Vegetables & Herbs)	10 - 12
Vegetable & Herb Exhibitor Rules & Information	10 - 11
Home Grown & Home Harvested Entry Form	15
Entry Tag	23
Vegetables	11
Herbs	11 - 12
Home Grown (Includes Flowers, Grasses & Arrangements)	12 - 14
Flower, Grasses & Arrangements Rules & Information	12
Home Grown & Home Harvested Entry Form	15
Entry Tag	23
Roses	12
Annuals	12
Perennial/Biennials	12 – 13
Everlastings	13
Bulbs, Corms & Tubers	13
Ornamental Grasses	13
Succulents	13
Arrangements	13 - 14

PRE-FAIR EVENTS: July 17 – July 22, 2021

Pre-Fair Events are free to the public. See list of events on pages 3.

PLEASE CHECK THE ARAPAHOE COUNTY FAIR WEBSITE FOR PRICING AND PURCHASING OPTIONS FOR TICKETS ON JUNE 1, 2021.

Admission and parking passes may be purchased online **ONLY** (credit card). Ticket purchases at the gate will not be available due to COVID-19 in 2021. All Fair attendees will need to pre-purchase tickets this year. Find ticketing information at **Arapahoecountyfair.com**.

All passes purchased online include a convenience fee. With online purchase, an e-mailed ticket can be printed or a QR code will be available to the purchaser for redemption at the fair gates. All passes can be redeemed during the fair beginning Thursday, July 22 thru Sunday, July 25 via the line at the entrance.

PUBLIC COMPETITION SCHEDULE OF EVENTS
Arapahoe County Fairgrounds, 25690 E. Quincy Ave., Aurora, CO 80016

All Creative Arts entries will be displayed in the Main Hall.
All Home Grown & Home Harvested entries will be displayed in the Exhibition Hall

CREATIVE ARTS DEPARTMENT

Main Hall

Visual Arts Fiber Arts

Pre-Entry Deadline: **Wednesday, July 14, 2021 - 4:30 p.m. (Pre-Entry Recommended)**
(Mailed entry forms and fees must be received July 14)

Exhibit Check-In: **Monday, July 19, 2021 - 9 a.m. – Noon & 4 – 7 p.m.**
Tuesday, July 20, 2021 - 8 – 10 a.m.
(Walk-In Entries Accepted Both Days)

Judging: **Tuesday, July 20, 2021 (Not Open to Public)**

Exhibit Release: **Sunday, July 25, 2021 - 6 – 8 p.m.**

HOME HARVESTED DEPARTMENT

Exhibition Hall

Vegetables Herbs

Pre-Entry Deadline: **Friday, July 16, 2021 - 4:30 p.m. (Pre-Entry Recommended)**
(Mailed entry forms and fees must be received Friday, July 16)

Walk-In Entry: **Wednesday, July 21, 2021 - 8 – 10 a.m.**

Exhibit Release: **Sunday, July 25, 2021 - 6 – 7 p.m.**

HOME GROWN DEPARTMENT

Exhibition Hall

Flowers Grasses Arrangements

Pre-Entry Deadline: **Friday, July 16, 2021 - 4:30 p.m. (Pre-Entry Recommended)**
(Mailed entry forms and fees must be received Friday, July 16)

Walk-In Entry: **Thursday, July 22, 2021 - 8 – 10 a.m.**

Exhibit Release: **Sunday, July 25, 2021 - 6 – 7 p.m.**

A pass for Public Competition exhibit release & parking will be distributed when exhibit entries are checked in.

Management will use all possible care to ensure the safety of all exhibits, exhibitors and the people attending the Fair. Under no circumstances will Arapahoe County, the Extension Office, Fair Planning Committee or any individual assisting with the Fair be held responsible in any way for any loss, injury, or damage to, occasioned by, or arising from any animal or article on exhibit, or for any accident or injury to any person exhibiting, assisting with, or attending this Fair.

CREATIVE ARTS EXHIBITOR INFORMATION

Visual Arts & Fine Arts

Main Hall

PRE-ENTRY DEADLINE

Wednesday, July 14, 2021

4:30 p.m.

EXHIBIT CHECK-IN TIME (MAIN HALL)

Monday – July 19, 2021

9 a.m. – Noon

4 – 7 p.m.

OR

Tuesday – July 20, 2021

8 – 10 a.m.

EXHIBIT RELEASE (MAIN HALL)

Sunday – July 25, 2021

6 p.m. – 8 p.m.

EXHIBIT ENTRY REQUIREMENTS:

Pre-Entry for Creative Arts is strongly recommended.

1. Pre-entry exhibit fee is \$1.00 per exhibit. Exhibits not pre-entered are \$2.00 per exhibit.
2. **NO REFUNDS OR CLASS SUBSTITUTIONS ALLOWED WITH PRE-ENTRY.**
3. Exhibit description is required on temporary exhibit tag and on entry form.
4. Pre-enter online at ArapahoeCounty.FairEntry.com or mail paper entry form with check to:
CSU Extension – Arapahoe County
Attn: Jean Walton
6934 S. Lima St. – Suite B
Centennial, CO 80112
5. Checks should be made payable to “Arapahoe County Extension Fund”.
6. Paper entry form for Creative Arts is on page 17.
7. Mailed pre-entry forms must be postmarked Wednesday, July 7 and received by July 14, 2021.
8. **Online at ArapahoeCounty.fairentry.com.** Exhibitors entering online for the first time or exhibitors who did not keep their password from the last fair will need to create their own password/ID.
 - a. When entering online, fees can be paid either by credit card or check.
 - b. If not using a credit card, make check payable to “Arapahoe County Extension Fund” for all fees. Print detailed invoice from online system and mail with check to:
CSU Extension – Arapahoe County
Attn: Jean Walton
6934 S Lima St. - Suite B
Centennial, CO 80112
 - c. Check, copy of invoice and pre-entry forms must be postmarked by Wednesday, July 7 and received by July 14, 2021.
9. For help with computer pre-entry, call 303-730-1920 and ask for Jean Walton.
10. Pre-enter online at ArapahoeCounty.FairEntry.com

11. Faxed or email entries are not accepted.

EXHIBIT CHECK-IN:

- Walk-in entries are welcome.
- Deliver exhibits to:
Arapahoe County Fairgrounds
Main Hall
25690 E. Quincy Ave., Aurora
- If you have not submitted a pre-entry form, you will need to submit the completed entry form (page 17), completed exhibit entry tags(s) and \$2 walk-in entry fee per exhibit. Credit cards not accepted for Walk-in entries.
- Pre-entered exhibits will be received and considered paid in full.
- **Entry Tags:**
 - a. Exhibit description is required on temporary exhibit tag and on entry form.
 - b. Complete the exhibit entry tags for your exhibits prior to arriving at the fair. These forms are on page 19 and 21 and may be copied and online at ArapahoeCountyFair.com under Public Competition. This will speed up the entry process.
- **Entries not accepted after 10 a.m., July 20. No exceptions.**
- **Allow time to complete your paper work so that the entry process is completed by 10 a.m.**
- **It is ultimately the exhibitor’s responsibility to enter their exhibits in the correct class.**

EXHIBITOR RULES:

1. Exhibitors of any age may live in any Colorado county.
2. Youth are eligible and encouraged to enter in Public Creative Arts competition. **Youth exhibitors do not need to be enrolled in 4-H.**
3. All articles entered must be entered in the name of the person who made it.
4. Quilt entries must have been completed after July 31, 2018. All other entries must have been completed after July 31, 2019.
5. Items exhibited in a previous Arapahoe County Fair may not be shown in this year’s fair.
6. Label all items with full name.
7. **Items may not be entered if there is not a class for them.**
8. **There is a limit of two entries per class by an individual. No exceptions.**
9. Exhibitors must enter in their respective age divisions except for Fine Arts. (See page 6.)
 - a) Juniors: Age 18 and under, as of Dec. 31, 2020
 - b) Seniors: Age 19 and up as of Dec. 31, 2020
10. Please consult this book for information regarding rules and regulations in each Division.

11. Judging will not be open to the public in 2021 due to COVID restrictions.

1st	\$3	Blue Ribbon
2nd	\$2	Red Ribbon
3rd	\$1	White Ribbon

EXHIBIT RELEASE:

- All exhibits must remain on display until release time at **6 p.m. – 8:00 p.m., Sunday, July 25, 2021.**
- **If you cannot pick up your exhibits on Sunday, July 25, 2021, please make arrangements to have someone pick them up for you.**
- Exhibits not picked up will be kept at the Fairgrounds for one week after the fair, and then taken to the Extension Office unless other arrangements have been made.

AWARDS:

1. The American Placing System is used in Creative Arts (judges choose one first, one second and one third place in each class.)
2. **However, the judges reserve the option to withhold ribbons and awards in a class where there is no deserving entry.** The decision of the judges is final.
3. Classes may be combined, divided, exhibits moved to the appropriate class, or not entered at the discretion of the superintendents and/or the judge in all Divisions.
4. In classes with only one entry, the award will be based on merit.
5. Cash premiums for the top three ranked exhibitors in all Creative Arts classes are:

6. **Overall Sweepstakes Ribbons:** There will be one Junior and one Senior Overall Sweepstakes ribbon. This award is based on the combined number of blue ribbons received by an exhibitor in Visual Arts and Fiber Arts. Additional ribbons will be calculated to break any ties.
7. **Overall Judge’s Choice Ribbons:** There will be one Overall Junior and one Overall Senior Judge’s Choice Award in each of the divisions listed: Photography, Fine Arts, Quilts and all Other Fiber Arts. This award is based on the best Junior and best Senior blue ribbon entry in each of the areas listed above and will be chosen by the judges.
8. Premium payments will be mailed to all exhibitors receiving ribbons.
9. Premium checks must be cashed by December 31, 2021 and will not be re-issued if not cashed by that date.

PROTESTS:

1. Under no circumstances shall any superintendent or Fair official be treated disrespectfully. Complaints must be brought to the attention of the Fair Planning Committee within 24 hours.

DEPARTMENT 2 – VISUAL ARTS

DIVISION D – PHOTOGRAPHY

Exhibit Rules:

1. Exhibitor must be an amateur. An amateur is a person who takes photographs as a hobby or whose return from sales does not exceed \$5,000 annually or 30% of annual income.
2. Exhibitor may enter only two pictures per class.
3. **The picture cannot be duplicated as an entry in any other class.**
4. **(Photos entered in the Other Classes (color or black and white) cannot be a duplicate of any photo entered in another class.**
5. Photos must have been taken after July 28, 2019 and not won an award at any other county fair or state fair and not previously entered at the Arapahoe County Fair.
6. The photo must be the original work of the exhibitor, with the exception of processing (printing) and mounting.
7. The material content of the photo as documented with the camera may not be changed or altered. Allowed is basic processing such as cropping, color correction, exposure adjustment, spotting, saturation, contrast. Tools that alter the appearance with artistic effects are not acceptable, nor are photo composites of more than one scene.
8. Prints must be at least 5” x 7” and no larger than 8” x 10”. This is the photograph size, not the mount or mat.
9. **Entry must not be framed and must have a secure matting or be dry mounted. If not dry mounted, use a spray adhesive to mount picture on matting. Follow product directions. Do not use rubber cement.**
10. Dry mount is recommended, but photo may be securely matted **with four-ply Standard Mat.** Light weight

paper mounting will not be accepted. Mat edges should not exceed 2 ¼ inches of framing beyond the image.

11. **Prints on canvas, glass, wood, fabric or metal, etc. are not allowed. Double foam boards may not be used for matting and photographs must not be shrink-wrapped.**
12. **NOTE:** Hangers will be provided. Do not put them on your photographs.
13. Photo collages will not be accepted.
14. Photography of nude or semi-nude subjects or photography of a sensitive nature will not be accepted.
15. If top of photo is hard to distinguish, please write “top” on back in pencil.
16. Sepia/white photos will be judged on the enhancement of sepia to the photo.
17. The application of sepia to the photo must be defined on the entry form.
 - a. Digital camera image memory
 - b. Photo editing software (Photoshop)
 - c. Pigment added to print after developing and printing

The judge will consider entries on a basis of:	
<ul style="list-style-type: none"> • Composition • Technique • Focus • Sharpness 	<ul style="list-style-type: none"> • Lighting • Creativity • Presentation

CLASS 138 JR: Landscape: Color Photo

CLASS 139 SR: Landscape: Color Photo

CLASS 140 JR: Landscape: Black & White Photo

CLASS 141 SR: Landscape: Black & White Photo

CLASS 142 JR: Animals: Color Photo

CLASS 143 SR: Animals: Color Photo

CLASS 144 JR: Animals: Black & White Photo

CLASS 145 SR: Animals: Black & White Photo

CLASS 146 JR: People: Color Photo

CLASS 147 SR: People: Color Photo

CLASS 148 JR: People: Black & White Photo

CLASS 149 SR: People: Black & White Photo

CLASS 150 JR: Action: Color Photo

CLASS 151 SR: Action: Color Photo

CLASS 152 JR: Action: Black & White Photo

CLASS 153 SR: Action: Black & White Photo

CLASS 154 JR: Still Life: Color Photo

CLASS 155 SR: Still Life: Color Photo

CLASS 156 JR: Still Life: Black & White Photo

CLASS 157 SR: Still Life: Black & White Photo

CLASS 158 JR: Floral: Color Photo

CLASS 159 SR: Floral: Color Photo

CLASS 160 JR: Floral: Black & White Photo

CLASS 161 SR: Floral: Black & White Photo

CLASS 162 JR: Other: Color Photo

(No duplicate from another class)

CLASS 163 SR: Other: Color Photo

(No duplicate from another class)

CLASS 164 JR: Other: Black & White Photo

(No duplicate from another class)

CLASS 165 SR: Other: Black & White Photo

(No duplicate from another class)

CLASS 166 JR: Sepia and white, Any Photo

CLASS 167 SR: Sepia and white, Any Photo

CLASS 168 JR: Story Photography*, Color Photos

CLASS 169 SR: Story Photography*, Color Photos

CLASS 170 JR: Story Photography*, Black & White Photos

CLASS 171 SR: Story Photography*, Black & White Photos

CLASS 172 JR: 2019 Arapahoe County Fair Photo, Black & White

CLASS 173 SR: 2019 Arapahoe County Fair Photo, Black & White

CLASS 174 JR: 2019 Arapahoe County Fair Photo, Color

CLASS 175 SR: 2019 Arapahoe County Fair Photo, Color

***Story Photo:** Story photo entries must consist of three photos of the same subject or theme and mounting must be as one display (one board), not on three separate pieces of board. Story photos must be no larger than 5" x 7". Must have captions.

DIVISION E - FINE ARTS

The judge will consider entries on a basis of:

- a. Use of Color
- b. Focal point and movement
- c. Design and Space Use
- d. Light and Shadow Use
- e. Texture
- f. Medium Selection
- g. Technique/Technical Skill
- h. Overall Presentation

Exhibit Rules:

1. Exhibitors may enter two items per class.
2. All Fine Art work must be mounted and ready to hang. (Mount to a sturdy surface with the edges of painting flush with mounting material.)
3. To assist with safe displaying, please securely apply to the back of the artwork hanging hardware appropriate for the size and weight of the display.
4. Label item with name, title of work and medium used.
5. Classes may be combined or divided at the discretion of the superintendents and/or judge.
6. Superintendent has the right to reject oversize pictures and subject matter of a sensitive nature.
7. Entry should be an example of your best work, preferably done in the last two years. The work cannot have been previously entered at the Arapahoe County Fair.
8. **In classes with Youth, Intermediate and Senior Divisions, Youth are ages 10 and under, Intermediates are ages 11 – 18 years of age and Seniors are ages 19 and older as of December 31, 2020.**

CLASS 179 YOUTH: Composition in Oil

CLASS 180 INTM: Composition in Oil

CLASS 181 SR: Composition in Oil

CLASS 182 YOUTH: Composition in Water Media

CLASS 183 INTM: Composition in Water Media

CLASS 184 SR: Composition in Water Media

CLASS 185 YOUTH: Composition in Acrylic

CLASS 186 INTM: Composition in Acrylic

CLASS 187 SR: Composition in Acrylic

CLASS 188 YOUTH:

CLASS 189 INTM:

CLASS 190 SR:

Composition in Ink, Pastel, Charcoal, Felt Pen or Graphics

CLASS 191 YOUTH:

CLASS 192 INTM:

CLASS 193 SR:

Composition Mixed Media using any of the media's listed above. (oil, water media, acrylic, ink, pastel, charcoal, felt pen or graphics)

CLASS 194 YOUTH:

CLASS 195 INTM:

CLASS 196 SR:

Miscellaneous Fine Art Work (does not fit any of the above classes.)

DEPARTMENT 3 – FIBER ARTS

DIVISION G - QUILTS

QUILT TYPES DEFINED

One Person Quilts: A quilt constructed and quilted by one person.

Duet Quilts: A quilt constructed by one person and quilted by another person by hand or by machine.

Hand Quilted: Quilts that are entirely hand quilted with no machine quilting at all.

Machine Quilted: Quilts that have any machine quilting. Machine quilted quilts may include some hand quilting.

Pieced: At least 75 percent of the surface of the quilt top is pieced, by hand or machine.

Appliquéd: At least 75 percent of the surface of the quilt top consists of appliquéd motifs applied either by hand or machine.

Tie/Tacked Quilt: Three layers (top, batting, and backing) held together by ties, tacking, etc. through all three layers.

Novelty Quilts: Bed covers that do not have any quilting stitches or traditional top techniques such as piecing and appliquéd. Includes biscuit quilts, Cathedral Window, Ribbon Quilts, Crazy Quilts (if not quilted) and Yo-Yo quilts.

Art Quilt: Wall quilts that are thematic or pictorial in design.

THE JUDGE WILL CONSIDER ALL ENTRIES ON A BASIS OF:

Workmanship:

- a. Piecing: Precise corner points; pattern matching; blending thread; lays smooth.
- b. Quilting: Even stitches; correct tension; smooth lines; consistent on front and back.
- c. Borders: Compliment quilt; proper construction; straight lines.
- d. Applique: Edges turned properly; smooth curves; not shadowing.
- e. Finishing: Betting to edge; straight outer edge; precise corners and mitering.
- f. Special Techniques: Enhance top and well secured; neat stitching.

Appearance and Design:

- a. Visual impact: Colors and fabric well chosen; pleasing, interesting; unity of style and spacing.
- b. Quilting Patterns: Complement and enhance quilt design; sufficient quilting; patterns well placed.
- c. General Appearance: Clean, No pet hair; marking lines removed; threads clipped.

Judging is based on the quality of the work, not the size of the quilt.

Exhibit Rules:

1. Exhibitors may enter two items per class.
2. Quilt Definition: Three layers (top, batting, and backing) held together by quilting stitches through all three layers. Usage, style or technique does not matter. Items that do not fit this definition, but are traditionally accepted as quilts include the yo-yo and cathedral window techniques.
3. Entries can be a kit, pattern or an original design done by an individual or group.

4. The use of pre-quilted purchased fabric is not considered quilting and will not be accepted as an exhibit for judging.
5. Entries must have been completed after August 1, 2018, and never have been previously entered at the Arapahoe County Fair.
6. Judging is based on the quality of the work and not the size of the quilt.
7. If a quilt has a permanent name (ID) on the back, please cover the area with a piece of fabric attached with safety pins.
8. **PLEASE NOTE:** Please enter your quilt in the proper quilt class under the proper workmanship classification as a “one person quilt,” or a “duet quilt. See the following Quilt Type Definitions for clarification.
9. **The quilt sizes listed need to meet both size dimensions, not just one. Example: Smaller than 72” x 90” means item must be smaller both in width and length.**

MACHINE QUILTED - (ONE PERSON QUILTS) LARGER THAN 72” X 90”

(Quilts must meet both size dimensions)

- CLASS 214 JR: Machine Pieced, Machine Quilted
CLASS 215 SR: Machine Pieced, Machine Quilted
CLASS 216 JR: Hand Pieced, Machine Quilted
CLASS 217 SR: Hand Pieced, Machine Quilted
CLASS 218 JR: Machine Appliquéd, Machine Quilted
CLASS 219 SR: Machine Appliquéd, Machine Quilted
CLASS 220 JR: Hand Appliquéd, Machine Quilted
CLASS 221 SR: Hand Appliquéd, Machine Quilted
CLASS 222 JR: Machine Embroidered, Machine Quilted
CLASS 223 SR: Machine Embroidered, Machine Quilted
CLASS 224 JR: Hand Embroidered, Machine Quilted
CLASS 225 SR: Hand Embroidered, Machine Quilted
CLASS 226 JR: Whole Cloth, Machine Quilted
CLASS 227 SR: Whole Cloth, Machine Quilted

HAND QUILTED - (ONE PERSON QUILTS) SMALLER THAN 72” X 90”

(Quilts must meet both size dimensions)

- CLASS 228 JR: Machine Pieced, Hand Quilted
CLASS 229 SR: Machine Pieced, Hand Quilted
CLASS 230 JR: Hand Pieced, Hand Quilted
CLASS 231 SR: Hand Pieced, Hand Quilted
CLASS 232 JR: Machine Appliquéd, Hand Quilted
CLASS 233 SR: Machine Appliquéd, Hand Quilted
CLASS 234 JR: Hand Appliquéd, Hand Quilted
CLASS 235 SR: Hand Appliquéd, Hand Quilted
CLASS 236 JR: Machine Embroidered, Hand Quilted
CLASS 237 SR: Machine Embroidered, Hand Quilted
CLASS 238 JR: Hand Embroidered, Hand Quilted
CLASS 239 SR: Hand Embroidered, Hand Quilted
CLASS 240 JR: Whole Cloth, Hand Quilted
CLASS 241 SR: Whole Cloth, Hand Quilted

MACHINE QUILTED - (ONE PERSON QUILTS)
SMALLER THAN 72" X 90"

(Quilts must meet both size dimensions)

CLASS 242 JR: Machine Pieced, Machine Quilted
CLASS 243 SR: Machine Pieced, Machine Quilted
CLASS 244 JR: Hand Pieced, Machine Quilted
CLASS 245 SR: Hand Pieced, Machine Quilted
CLASS 246 JR: Machine Appliquéd, Machine Quilted
CLASS 247 SR: Machine Appliquéd, Machine Quilted
CLASS 248 JR: Hand Appliquéd, Machine Quilted
CLASS 249 SR: Hand Appliquéd, Machine Quilted
CLASS 250 JR: Machine Embroidered, Machine Quilted
CLASS 251 SR: Machine Embroidered, Machine Quilted
CLASS 252 JR: Hand Embroidered, Machine Quilted
CLASS 253 SR: Hand Embroidered, Machine Quilted
CLASS 254 JR: Whole Cloth, Machine Quilted
CLASS 255 SR: Whole Cloth, Machine Quilted

HAND QUILTED - (DUET QUILTS)

(Pieced by Exhibitor/Quilted by Another Individual)

LARGER THAN 72" X 90"

(Quilts must meet both size dimensions)

CLASS 256 JR: Machine Pieced, Hand Quilted
CLASS 257 SR: Machine Pieced, Hand Quilted
CLASS 258 JR: Hand Pieced, Hand Quilted
CLASS 259 SR: Hand Pieced, Hand Quilted
CLASS 260 JR: Machine Appliquéd, Hand Quilted
CLASS 261 SR: Machine Appliquéd, Hand Quilted
CLASS 262 JR: Hand Appliquéd, Hand Quilted
CLASS 263 SR: Hand Appliquéd, Hand Quilted
CLASS 264 JR: Machine Embroidered, Hand Quilted
CLASS 265 SR: Machine Embroidered, Hand Quilted
CLASS 266 JR: Hand Embroidered, Hand Quilted
CLASS 267 SR: Hand Embroidered, Hand Quilted
CLASS 268 JR: Whole Cloth, Hand Quilted
CLASS 269 SR: Whole Cloth, Hand Quilted

MACHINE QUILTED - (DUET QUILTS)

(Pieced by Exhibitor/Quilted by Another Individual)

LARGER THAN 72" X 90"

(Quilts must meet both size dimensions)

CLASS 270 JR: Machine Pieced, Machine Quilted
CLASS 271 SR: Machine Pieced, Machine Quilted
CLASS 272 JR: Hand Pieced, Machine Quilted
CLASS 273 SR: Hand Pieced, Machine Quilted
CLASS 274 JR: Machine Appliquéd, Machine Quilted
CLASS 275 SR: Machine Appliquéd, Machine Quilted
CLASS 276 JR: Hand Appliquéd, Machine Quilted
CLASS 277 SR: Hand Appliquéd, Machine Quilted
CLASS 278 JR: Machine Embroidered, Machine Quilted
CLASS 279 SR: Machine Embroidered, Machine Quilted
CLASS 280 JR: Hand Embroidered, Machine Quilted
CLASS 281 SR: Hand Embroidered, Machine Quilted
CLASS 282 JR: Whole Cloth, Machine Quilted
CLASS 283 SR: Whole Cloth, Machine Quilted

HAND QUILTED - (DUET QUILTS)

(Pieced by Exhibitor/Quilted by Another Individual)

SMALLER THAN 72" X 90"

(Quilts must meet both size dimensions)

CLASS 284 JR: Machine Pieced, Hand Quilted
CLASS 285 SR: Machine Pieced, Hand Quilted
CLASS 286 JR: Hand Pieced, Hand Quilted
CLASS 287 SR: Hand Pieced, Hand Quilted
CLASS 288 JR: Machine Appliquéd, Hand Quilted
CLASS 289 SR: Machine Appliquéd, Hand Quilted
CLASS 290 JR: Hand Appliquéd, Hand Quilted
CLASS 291 SR: Hand Appliquéd, Hand Quilted
CLASS 292 JR: Machine Embroidered, Hand Quilted
CLASS 293 SR: Machine Embroidered, Hand Quilted
CLASS 294 JR: Hand Embroidered, Hand Quilted
CLASS 295 SR: Hand Embroidered, Hand Quilted
CLASS 296 JR: Whole Cloth, Hand Quilted
CLASS 297 SR: Whole Cloth, Hand Quilted

MACHINE QUILTED - (DUET QUILTS)

(Pieced by Exhibitor/Quilted by Another Individual)

SMALLER THAN 72" X 90"

(Quilts must meet both size dimensions)

CLASS 298 JR: Machine Pieced, Machine Quilted
CLASS 299 SR: Machine Pieced, Machine Quilted
CLASS 300 JR: Hand Pieced, Machine Quilted
CLASS 301 SR: Hand Pieced, Machine Quilted
CLASS 302 JR: Machine Appliquéd, Machine Quilted
CLASS 303 SR: Machine Appliquéd, Machine Quilted
CLASS 304 JR: Hand Appliquéd, Machine Quilted
CLASS 305 SR: Hand Appliquéd, Machine Quilted
CLASS 306 JR: Machine Embroidered, Machine Quilted
CLASS 307 SR: Machine Embroidered, Machine Quilted
CLASS 308 JR: Hand Embroidered, Machine Quilted
CLASS 309 SR: Hand Embroidered, Machine Quilted
CLASS 310 JR: Whole Cloth, Machine Quilted
CLASS 311 SR: Whole Cloth, Machine Quilted

WALL ART QUILTS LARGER THAN 36" X 36"

(Quilts must meet both size dimensions)

MACHINE QUILTED - (ONE PERSON QUILTS)

CLASS 312 JR: Wall Art Quilts, Machine Quilted
(Thematic or pictorial design)

CLASS 313 SR: Wall Art Quilts, Machine Quilted
(Thematic or pictorial in design)

HAND QUILTED - (ONE PERSON QUILTS)

CLASS 316 JR: Wall Art Quilts, Hand Quilted
(Thematic or pictorial design)

CLASS 317 SR: Wall Art Quilts, Hand Quilted
(Thematic or pictorial in design)

WALL ART QUILTS SMALLER THAN 36" X 36"

(Quilts must meet both size dimensions)

MACHINE QUILTED - (ONE PERSON QUILTS)

CLASS 320 JR: Wall Art Quilts, Machine Quilted
(Thematic or pictorial design)

CLASS 321 SR: Wall Art Quilts, Machine Quilted
(Thematic or pictorial in design)

HAND QUILTED - (ONE PERSON QUILTS)

CLASS 324 JR: Wall Art Quilts, Hand Quilted
(Thematic or pictorial design)

CLASS 325 SR: Wall Art Quilts, Hand Quilted
(Thematic or pictorial in design)

MISCELLANEOUS QUILTS

CLASS 328 JR: Biscuit Quilts, Cathedral Window, Crazy Quilts (if not quilted), Ribbon and Yo-Yo's

CLASS 329 SR: Biscuit Quilts, Cathedral Window, Crazy Quilts (if not quilted), Ribbon and Yo-Yo's

CLASS 330 JR: Any Tied or Tacked Quilt

CLASS 331 SR: Any Tied or Tacked Quilt

CLASS 332 JR: Quilt, Mixed techniques (applique, pieced, embroidery, etc.), Hand quilted

CLASS 333 SR: Quilt, Mixed techniques (applique, pieced, embroidery, etc.), Hand quilted

CLASS 334 JR: Quilt, Mixed techniques (applique, pieced, embroidery, etc.), Machine quilted

CLASS 335 SR: Quilt, Mixed techniques (applique, pieced, embroidery, etc.), Machine quilted

CLASS 336 JR: Quilted Pillows, Must be three layers Quilted

CLASS 337 SR: Quilted Pillows, Must be three layers Quilted

CLASS 338 JR: Quilted Accessories – purses, totes, potholders, etc., must be three layers quilted

CLASS 339 SR: Quilted Accessories – purses, totes, potholders, etc., must be three layers quilted

CLASS 342 JR: Quilted Placemat (2) or Table Runner

CLASS 343 SR: Quilted Placemat (2) or Table Runner

CLASS 344 JR: Miscellaneous Quilted Item
(Does not fit in any of the above classes)

CLASS 345 SR: Miscellaneous Quilted Item
(Does not fit in any of the above classes)

CLASS 346 JR: *Heritage Quilt (50 years or older.)

CLASS 347 SR: *Heritage Quilt (50 years or older.)

***Heritage Quilt:** A quilt that is 50 years or older. If its history is known, attach a 3" x 5" card with history. This history should include the relationship of the maker to the owner and the year made.

DIVISION H - KNITTING

Exhibit Rules:

1. Exhibitors may enter two items per class.
2. Soiled items will not be judged.

CLASS 424 JR: Afghan, Larger than 40" x 60"

CLASS 425 SR: Afghan, Larger than 40" x 60"

CLASS 426 JR: Afghan, Smaller than 40" x 60"

CLASS 427 SR: Afghan, Smaller than 40" x 60"

CLASS 428 JR: Wearable accessory (hat, purse, scarf, socks, etc.)

CLASS 429 SR: Wearable accessory (hat, purse, scarf, socks, etc.)

CLASS 430 JR: Bedspread

CLASS 431 SR: Bedspread

CLASS 432 JR: Garment

CLASS 433 SR: Garment

CLASS 434 JR: Miscellaneous Knitting
(does not fit any of the above classes.)

CLASS 435 SR: Miscellaneous Knitting
(does not fit any of the above classes.)

CLASS 436 JR: *Heritage Knitted Item
(50 years or older)

CLASS 437 SR: *Heritage Knitted Item
(50 years or older)

***Any Heritage Knitted Item:** A knitted item that is 50 years or older. If its history is known, attach a 3" x 5" card with history. This history should include the relationship of the maker to the owner and the year made.

DIVISION I- CROCHET

Exhibit Rules:

1. Exhibitors may enter two items per class.
2. Soiled items will not be judged.
3. Doilies must be mounted with pins against a colored background on foam core board for display.

CLASS 444 JR: Afghan, Larger than 40" x 60"

CLASS 445 SR: Afghan, Larger than 40" x 60"

CLASS 446 JR: Afghan, Smaller than 40" x 60"

CLASS 447 SR: Afghan, Smaller than 40" x 60"

CLASS 448 JR: Wearable accessory
(i.e. hat, purse, scarf, socks, etc.)

CLASS 449 SR: Wearable accessory
(i.e. hat, scarf, purse, socks, etc.)

CLASS 450 JR: Bedspread

CLASS 451 SR: Bedspread

CLASS 452 JR: Garment

CLASS 453 SR: Garment

CLASS 454 JR: Doilies, mounted

CLASS 455 SR: Doilies, mounted

CLASS 456 JR: Miscellaneous Crochet
(does not fit any of the above classes.)

CLASS 457 SR: Miscellaneous Crochet
(does not fit any of the above classes.)

CLASS 458 JR: *Heritage Crochet Item
(50 years or older)

CLASS 459 SR: *Heritage Crochet Item
(50 years or older)

***Any Heritage Crochet Item:** A crochet item that is 50 years or older. If its history is known, attach a 3" x 5" card with history. This history should include the relationship of the maker to the owner and the year made.

HOME GROWN & HOME HARVESTED EXHIBITOR INFORMATION

Vegetables & Herbs

Flowers, Arrangements & Ornamental Grasses

Exhibition Hall

Lucinda Greene, Superintendent

Evelyn Alton & Gloria Huegel, Assistant Superintendents

PRE-ENTRY DEADLINE

Friday, July 16, 2021

4:30 p.m.

HOME HARVESTED HORTICULTURE

WEDNESDAY - JULY 21, 2021

Exhibit Check-In Time 8 – 10 a.m.

HOME GROWN FLORICULTURE

THURSDAY - JULY 22, 2021

Exhibit Check-In Time 8 – 10 a.m.

HORTICULTURE & FLORICULTURE

Exhibit Release

Sunday - July 25, 2021 6 – 7 p.m.

EXHIBIT ENTRY REQUIREMENTS

1. Pre-entry exhibit fee is \$1.00 per exhibit. Exhibits not pre-entered are \$2.00 per exhibit.
2. An exhibitor may enter an unlimited number of entries by pre-entering. Up to 10 additional entries per exhibitor will be accepted at Exhibit Check-in.
3. Pre-Enter online at ArapahoeCountyFairEntry.com or mail paper entry form with check to:
CSU Extension – Arapahoe County
Attn: Jean Walton
6934 S Lima St. - Suite B
Centennial, CO 80112
4. Paper entry form for Horticulture and Floriculture is on page 15 - 16.
5. **Online at ArapahoeCounty.fairentry.com.** Exhibitors entering online for the first time or exhibitors who did not keep their password from the last fair will need to create their own password/ID.
 - a. When entering online, fees can be paid either by credit card or check.
 - b. If not using a credit card, make check payable to “Arapahoe County Extension Fund” for all fees. Print detailed invoice from online system and mail with check to:
CSU Extension – Arapahoe County
Attn: Jean Walton
6934 S Lima St. - Suite B
Centennial, CO 80112
 - c. Check, copy of invoice and pre-entry forms must be received by July 16, 2021.
6. **NO REFUNDS OR CLASS SUBSTITUTIONS ALLOWED.**
7. For help with computer pre-entry, please call 303-730-1920 and ask for Jean Walton.

EXHIBIT CHECK-IN:

- Walk-in entries are welcome at Exhibit Check-In. Up to 10 entries per exhibitor may be walked-in. Credit cards will not be accepted at Exhibit Check-In.
- Exhibitors entering more than 10 exhibits must pre-enter.
- Deliver exhibits to:
Arapahoe County Fairgrounds
Exhibition Hall
25690 E. Quincy Ave. Aurora, CO 80016

EXHIBITOR RULES:

1. Exhibitors of any age may live in any Colorado county.
2. The Arapahoe County Fair management is not responsible for loss or damage to exhibits.
3. Exhibitors must enter in their respective age division.
 - a. Juniors: Age 18 and under as of Dec. 31, 2020
 - b. Seniors: Age 19 and up as of Dec. 31, 2020
4. **Marijuana is prohibited in any horticulture or floriculture exhibit.**
5. **Noxious weeds or other illegal plants are prohibited in any horticulture or floriculture exhibit.**
6. All entries must have been grown by the exhibitor.
7. All Horticulture entries will be displayed in containers/plates that will be provided.
8. All Floriculture entries will be displayed in brown bottles that will be provided.
9. Entering exhibits in the proper class is the exhibitor’s responsibility.
10. Hail damage should be noted on the entry form and entry tag.

EXHIBIT RELEASE:

- All exhibits must remain on display until release time at **6:00 p.m., Sunday, July 25, 2021.**
- **Exhibitor premiums will be forfeited if exhibit is taken off display prior to 6:00 p.m., Sunday July 25, 2021.**
- All Horticulture exhibits will not be returned to the exhibitor unless specified at exhibit check-in. Acceptable produce from exhibits will be donated to local foodbanks.
- Exhibits not picked up by 7 p.m. will be disposed of by the Fair management.

AWARDS:

1. The decision of the judges is final.
2. **Best of Show Ribbons:** There will be a Junior and a Senior Best of Show ribbon in the Horticulture Division and the Floriculture Division. This award is based on the **best** Junior and **best** Senior blue ribbon entry.

3. Premiums in the Horticulture and Floriculture Divisions are:

- 1st Place - Blue Ribbon \$3
- 2nd Place - Red Ribbon \$2
- 3rd Place - White Ribbon \$1

- 4. Premium payments will be mailed to all exhibitors receiving ribbons.
- 5. Premium checks must be cashed by December 31, 2021 and will not be re-issued if not cashed by this date.

DEPARTMENT 4 – HOME HARVESTED HORTICULTURE

DIVISION I – VEGETABLES

DIVISION I, J AND K ENTRIES WILL BE JUDGED ON THE BASIS OF:

- a) **Condition:** free from disease, insect, mechanical, or other forms of damage including dirt or stains.
- b) **Quality:** Exhibits that are at the “peak of perfection” for eating or use. Crisp, firm, mature, flavorful or aromatic.
- c) **Uniformity:** Uniform in size, shape, maturity and color. Attractiveness of an exhibit is enhanced by all specimens being uniform.
- d) **True to type:** Moderately sized, and not overly large. Specimens should be typical of the type and variety of vegetable, herb or fruit with bright, clear color.

CLASS 300 JR: Beans, snap:

CLASS 301 SR: Beans, snap:

6 pods. Stems attached.

CLASS 320 JR: Cucumbers, pickling:

CLASS 321 SR: Cucumbers, pickling:

3, 1 ½” – 4” long, retain spines.

CLASS 322 JR: Cucumbers, slicing:

CLASS 323 SR: Cucumbers, slicing:

3, 4” or longer, retain spines.

CLASS 324 JR: Garlic

CLASS 325 SR: Garlic

3 bulbs. Trim necks to 1”

CLASS 328 JR: Lettuce, 1 Plant:

CLASS 329 SR: Lettuce, 1 Plant:

1 plant. Roots intact for exhibition in water.

CLASS 336 JR: Green Onions:

CLASS 337 SR: Green Onions:

3 Onions, up to ½” diameter. Wash and trim roots to ½” and tops to 8”.

CLASS 340 JR: Peppers, Hot:

CLASS 341 SR: Peppers, Hot:

2 fruit with stems attached.

CLASS 344 JR: Peppers, sweet:

CLASS 345 SR: Peppers, sweet:

2 fruit with stems attached. Judged as to variety.

CLASS 348 JR: Potatoes

CLASS 349 SR: Potatoes

CLASS 352 JR: Squash, zucchini:

CLASS 353 SR: Squash, zucchini:

2 fruit, of same color and variety. Not over 10 inches. ½” stems.

CLASS 354 JR: Squash, summer:

CLASS 355 SR: Squash, summer:

2 fruit, of same color and variety (ex: crookneck, straight neck, oval, scallop or round). Up to 7” long, with ½” stem. If scallop or round, not over 6” diameter.

CLASS 356 JR: Swiss chard:

CLASS 357 SR: Swiss chard:

3 stems including leaves. Crisp, good color, washed.

CLASS 358 JR: Tomatoes, Salad, Standard or Beefsteak:

CLASS 359 SR: Tomatoes Salad, Standard or Beefsteak:

2 fruit, ripe, no stems, all the same variety.

CLASS 360 JR: Cherry, Plum or Pear Tomatoes:

CLASS 361 SR: Cherry, Plum or Pear Tomatoes:

3 with stems attached.

2 fruit with stems attached.

CLASS 366 JR: Any Other Vegetable:

CLASS 367 SR: Any Other Vegetable:

Judged as to species. Limited to only one entry per individual. A 3x5” card containing species and variety should accompany exhibit.

DIVISION J - HERBS

CLASS 376 JR: Any Herb:

Limited to 3 entries per individual. Each entry must be a different herb.

CLASS 379 SR: Basil:

3 Stems. State variety. No flowers.

CLASS 393 SR: Chives, any type:

3 plantlets. Wash and trim roots to ½”.

CLASS 395 SR: Cilantro: 3 Stems, 3” or more.

CLASS 399 SR: Dill: 1 stem, 12-18”.

CLASS 401 SR: Fennel: 1 stem.

CLASS 405 SR: Lavender: 3 Stems.

CLASS 411 SR: Mint: 3 stems. No flowers.

CLASS 413 SR: Oregano: 3 stems. No flowers.

CLASS 415 SR: Parsley:
3 stems, 3" or more.

CLASS 417 SR: Rosemary: 3 stems.

CLASS 419 SR: Sage: 3 stems.

CLASS 425 SR: Tarragon: 3 stems.

CLASS 427 SR: Thyme: 3 stems, 3" or more.

DEPARTMENT 5 – HOME GROWN FLORICULTURE

DIVISIONS L, M, N, O, P AND Q ENTRIES WILL BE JUDGED ON THE BASIS OF:

- a) **Condition:** Free from disease, insect, mechanical, or other forms of damage including dirt, stain or blemish. Peak of bloom. Ornamental grasses may be exhibited with or without flower/seed head and judged accordingly.
- b) **Form:** Proper maturity, shape and petal age or bloom (if applicable for ornamental grasses).
- c) **Stem and foliage:** Strength and/or straightness, foliage quality, size and proportion.
- d) **Color:** Intensity, clarity and brilliance.
- e) **Size:** Blooms and foliage should be proper size for variety. In classes where multiple specimens are exhibited, they should be of uniform maturity and size.

FLORICULTURE PREPARATION INSTRUCTIONS:

1. Follow rules of presentation for requirements such as 'spray' vs. 'stem'.
 - a. Spray: A multiple-branched specimen with at least two open blooms and with or without buds.
 - b. Stem: A single-branched specimen with a single bloom and no other buds.

DIVISION L - ROSES

Rose Exhibit Rules:

1. Blooms should be 1/2 to 3/4 open.
2. Foliage intact on flower stems.
3. Length of stem should be in proportion to size of bloom.

CLASS 480 JR: Any Rose:

Limited to 3 entries per individual. Each entry must be a different rose.

CLASS 481 SR: Hybrid Tea, any Color
1 Stem, 1 Bloom.

CLASS 483 SR: Floribunda, any color.
1 Spray.

CLASS 485 SR: Grandiflora, any color.
1 Spray or 1 Stem.

CLASS 487 SR: Miniature, any color
1 Stem, 1 Bloom or 1 Spray.

CLASS 489 SR: Climber/Rambler:
1 Stem.

CLASS 491 SR: Fragrant Rose

Any Variety Grown For Fragrance: 1 Stem or 1 Cluster.

DIVISION M – ANNUALS

Annual Flower Exhibit Rules:

1. All blooms must be the same color per class.
2. Foliage intact on flower stems.
3. Length of stem should be in proportion to size of bloom.

CLASS 546 JR: Any Annual :

Limited to 3 entries per individual. Each entry must be a different annual.

CLASS 547 SR: Cosmos: 3 stems or 1 spray.

CLASS 551 SR: Geranium Any type - 1 stem.

CLASS 555 SR: Marigold: Any type - 1 stem or spray

CLASS 559 SR: Petunia: Any type, 1 spray.

CLASS 561 SR: Rudbeckia: 1 stem.

CLASS 563 SR: Salvia: 3 stems.

CLASS 565 SR: Snapdragon: Any type/color, 1 stem.

CLASS 567 SR: Sunflower: Any type - 1 bloom.

CLASS 571 SR: Zinnia: Any type - 1 stem.

DIVISION N – PERENNIALS & BIENNIALS

Perennial Exhibit Rules:

1. 3 blooms, 3 stems or 3 sprays, according to variety, except as noted.

CLASS 630 JR: Any Perennial/Biennial:

Limited to 3 entries per individual. Each entry must be a different perennial.

CLASS 631 SR: Achillea (yarrow): 3 stems with flowers.

CLASS 633 SR: Agastache: 3 stems with flowers.

CLASS 635 SR: Artemisia: 1 stem.

CLASS 637 SR: Bee Balm: (Bergamot, Monarda) 3 Stems.

CLASS 639 SR: Cat Mint: 3 stems

CLASS 641 SR: Clematis: 1 stem with flowers.

CLASS 643 SR: Columbine: 1 stem with flowers.

CLASS 647 SR: Centranthus (valerian):
3 stems with flowers.

CLASS 649 SR: Coreopsis: 3 stems with flowers.

CLASS 651 SR: Daisy: 3 stems with flowers.

CLASS 653 SR: Delphinium: 1 stem.

CLASS 655 SR: Dianthus: 3 stems with flowers.

CLASS 657 SR: Echinacea: 3 stems with flowers.

CLASS 659 SR: Gaillardia: 3 stems with flowers.

CLASS 661 SR: Hemerocallis (daylily): 1 stem.

CLASS 669 SR: Penstemon: 3 stems with flowers.

CLASS 671 SR: Phlox: 1 stem.

CLASS 673 SR: Rudbeckia: 1 stem or 1 spray.

CLASS 675 SR: Salvia: 3 stems with flowers.

CLASS 685 SR: Native Plants:
1 spray or 1 stem with flowers. Do not collect plants from public spaces. State species and variety on a 3x5" card.

CLASS 687 SR: Plant Select:
1 spray or 1 stem with flowers.

CLASS 689 SR: Any other perennial:
State species and variety on a 3x5" card. Limited to only one entry per individual.

CLASS 690 JR: Any Edible Flower:
CLASS 691 SR: Any Edible Flower:
Annual. Limited to only one entry per individual. Judged as to species. A 3x5" card containing species and variety should accompany exhibit.

DIVISION O - EVERLASTINGS

Everlastings Exhibit Rules:

1. State variety.
2. Bunch of 3 stems, green or dry (Echinops, Gomphrena, Helichrysum, seed heads, seed pods, Xeranthemum, etc.)
3. Limited to only one entry per individual.

CLASS 719 SR: Any Everlasting

DIVISION P – BULBS, CORMS AND TUBERS

Bulbs, Corms and Tubers Exhibit Rules:

1. One bloom or spike.
2. Foliage intact on flower stems.
3. Length of stem should be in proportion to size of bloom.

CLASS 720 JR: Any Bulb, Corm or Tuber:
Limited to 3 entries per individual. Each entry must be a different bulb, corm or tuber.

CLASS 721 SR: Begonias, tuberous: 1 bloom with foliage.

CLASS 723 SR: Begonias, Any Other:
(ex: Cascade, Crispa): 1 bloom with foliage.

CLASS 727 SR: Dahlia, any type: 1 bloom.

CLASS 731 SR: Lily, Any type: 1 stem with flower.
No Daylilies. They are class 661.

DIVISION Q – ORNAMENTAL GRASSES

Ornamental Grass Exhibit Rules:

1. Include flowering stem if present.
2. Provide 3 stems for all grasses cut at the base.

CLASS 750 JR: 3 stems with flower/seed head

CLASS 751 SR: 3 stems with flower/seed head

CLASS 752 JR: 3 Leaves or blades

CLASS 753 SR: 3 Leaves or blades

DIVISION S – SUCCULENTS

CLASS 763 SR: Any Succulent:

DIVISION S ENTRIES WILL BE JUDGED ON THE BASIS OF:

- a) **Condition:** Free from disease, insect, mechanical, or other forms of damage including dirt, stain or blemish. No damaged spines.
- b) **Difficulty of cultivation:** Well balanced growth and development. Level of ease or difficulty to grow and maintain.
- c) **Conformity to type:** Good size for the species and appropriate age growth. If bloom is present, it should be fully open and undisturbed.
- d) **Rarity:** Uncommon or unusual sought after specialty plants. Exhibits may range from native to exotic.

DIVISION T – ARRANGEMENTS

Arrangement Exhibit Rules:

1. Must be created by the exhibitor.
2. Must not exceed 24" in width, except as noted.
3. Fresh fruit, vegetables or flowers must be from exhibitor's garden.

4. Dried plant materials, grasses and wildflowers may be collected by the exhibitor in accordance with applicable legal collection rules. Plant materials exhibited *may not* be purchased. Use of preserved moss is acceptable.
5. A 3" x 5" card identifying the various materials used must accompany the entry.
6. Mark container and accessories with exhibitor name in location not visible to judges or public.
7. Container and any accessories are judged as part of the arrangement.

CLASS 777 SR: Pollinator Paradise:

A creative, artistic arrangement primarily using plants known to attract pollinators. Please include a 3x5 card identifying the plants used in your exhibit.

CLASS 779 SR: The Showcase:

An arrangement whose focal point showcases a particular garden specimen.

CLASS 781 SR: Dinner From the Garden:

An arrangement of edible plant material.

CLASS 783 SR: Garden Surprise:

A display of any plant material in an unusual or decorated garden container.

CLASS 785 SR: Cottage Garden:

An arrangement of old fashioned flowers from the cottage garden.

CLASS 787 SR: Glorious Scents

An artistic arrangement using culinary or ornamental herbs.

CLASS 789 SR: Everlasting Glory:

An arrangement of dried plant material.

CLASS 791 SR: Tiny Pleasures:

A miniature arrangement not to exceed 5" in any dimension.

CLASS 793 SR: Glam It Up:

A glamorous arrangement with added bling, such as jewels, pearls, etc.

CLASS 795 SR: Leaf it to Me:

An arrangement with no blooms, using only interesting foliage and grasses.

CLASS 797 SR: Dish Garden:

An arrangement of succulents, cacti, bonsai, foliage, herbs, etc. in a low, shallow bowl with plants of similar cultural requirements, and properly scaled accessories. Please note if garden is indoors or outdoors.

CLASS 799 SR: Fairy Garden:

Go miniature and whimsical! Build a fairy garden with suitably scaled plants and accessories.

DIVISION T ENTRIES WILL BE JUDGED ON THE BASIS OF:

- a) **Design: Balance, scale, composition and proportion:** Overall design is seen as one complete piece, pleasing to the eye and enjoyable to look at.
- b) **Color harmony:** Harmony of color used to create attractiveness.
- c) **Conformance:** Suitability to the class description.
- d) **Originality and self-expression:** Creativity, self-expression and interpretation of the class theme.
- e) **Texture harmony of materials:** Relationship between the elements used: flowers, foliage, container and accessories in a design.
- f) **Relation to container:** Proper scale and proportion to container.
- g) **Condition:** Freshness and quality of all materials used: flowers, foliage, containers, ribbons, and other accents.

THIS PAGE LEFT BLANK BECAUSE OF ENTRY TAG

In order to speed up exhibit entry at the fair, please complete the exhibit entry tag for your exhibit prior to arriving at the fair. This form may be copied. It is also online at ArapahoeCountyFair.com under Public Competitions. This will speed up the entry process

ARAPAHOE COUNTY FAIR
CREATIVE ARTS ENTRY TAG
(Except Fine Arts)

PLEASE CIRCLE: JUNIOR SENIOR
(18 yrs. & under) (19 yrs. & older)

Office Use Only: Entry # _____ PLACING: (Please Circle) 1 st . 2 nd . 3 rd .

DEPT: _____ DIVISION: _____ CLASS _____

EXHIBIT DESCRIPTION REQUIRED: _____

-----Fold Here-----

NAME: _____

ARAPAHOE COUNTY FAIR
CREATIVE ARTS ENTRY TAG
(Except Fine Arts)

PLEASE CIRCLE: JUNIOR SENIOR
(18 yrs. & under) (19 yrs. & older)

Office Use Only: Entry # _____ PLACING: (Please Circle) 1 st . 2 nd . 3 rd .

DEPT: _____ DIVISION: _____ CLASS _____

EXHIBIT DESCRIPTION REQUIRED: _____

-----Fold Here-----

NAME: _____

ARAPAHOE COUNTY FAIR
CREATIVE ARTS ENTRY TAG
(Except Fine Arts)

PLEASE CIRCLE: JUNIOR SENIOR
(18 yrs. & under) (19 yrs. & older)

Office Use Only: Entry # _____ PLACING: (Please Circle) 1 st . 2 nd . 3 rd .

DEPT: _____ DIVISION: _____ CLASS _____

EXHIBIT DESCRIPTION REQUIRED: _____

-----Fold Here-----

NAME: _____

ARAPAHOE COUNTY FAIR
CREATIVE ARTS ENTRY TAG
(Except Fine Arts)

PLEASE CIRCLE: JUNIOR SENIOR
(18 yrs. & under) (19 yrs. & older)

Office Use Only: Entry # _____ PLACING: (Please Circle) 1 st . 2 nd . 3 rd .

DEPT: _____ DIVISION: _____ CLASS _____

EXHIBIT DESCRIPTION REQUIRED: _____

-----Fold Here-----

NAME: _____

THIS PAGE LEFT BLANK BECAUSE OF ENTRY TAG

In order to speed up exhibit entry at the fair, please complete the exhibit entry tag for your exhibit prior to arriving at the fair. This form may be copied. It is also online at ArapahoeCountyFair.com under Public Competitions. This will speed up the entry process.

**ARAPAHOE COUNTY FAIR
FINE ARTS ONLY ENTRY TAG**

PLEASE CIRCLE:
YOUTH INTERMEDIATE SENIOR
(10 yrs. & under) (11 – 18 yrs.) (19 yrs. & older)

Office Use Only: Entry # _____ PLACING: (Please Circle) 1 st . 2 nd . 3 rd .
--

DEPT: _____ DIVISION: _____ CLASS: _____

EXHIBIT DESCRIPTION REQUIRED: _____

-----Fold Here-----

NAME: _____

**ARAPAHOE COUNTY FAIR
FINE ARTS ONLY ENTRY TAG**

PLEASE CIRCLE:
YOUTH INTERMEDIATE SENIOR
(10 yrs. & under) (11 – 18 yrs.) (19 yrs. & older)

Office Use Only: Entry # _____ PLACING: (Please Circle) 1 st . 2 nd . 3 rd .
--

DEPT: _____ DIVISION: _____ CLASS: _____

EXHIBIT DESCRIPTION REQUIRED: _____

-----Fold Here-----

NAME: _____

**ARAPAHOE COUNTY FAIR
FINE ARTS ONLY ENTRY TAG**

PLEASE CIRCLE:
YOUTH INTERMEDIATE SENIOR
(10 yrs. & under) (11 – 18 yrs.) (19 yrs. & older)

Office Use Only: Entry # _____ PLACING: (Please Circle) 1 st . 2 nd . 3 rd .
--

DEPT: _____ DIVISION: _____ CLASS: _____

EXHIBIT DESCRIPTION REQUIRED: _____

-----Fold Here-----

NAME: _____

**ARAPAHOE COUNTY FAIR
FINE ARTS ONLY ENTRY TAG**

PLEASE CIRCLE:
YOUTH INTERMEDIATE SENIOR
(10 yrs. & under) (11 – 18 yrs.) (19 yrs. & older)

Office Use Only: Entry # _____ PLACING: (Please Circle) 1 st . 2 nd . 3 rd .
--

DEPT: _____ DIVISION: _____ CLASS: _____

EXHIBIT DESCRIPTION REQUIRED: _____

-----Fold Here-----

NAME: _____

THIS PAGE LEFT BLANK BECAUSE OF ENTRY FORM TAG

In order to speed up exhibit entry at the fair, please complete the exhibit entry tag for your exhibit prior to arriving at the fair. This form may be copied. It is also online at ArapahoeCountyFair.com under Public Competitions. This will speed up the entry process

ARAPAHOE COUNTY FAIR
HOMEGROWN/HOME HARVESTED
ENTRY TAG

PLEASE CIRCLE: JUNIOR (18 yrs. & under) SENIOR (19 yrs. & older)

Office Use Only:
Entry # _____
PLACING: (Please Circle) 1st. 2nd. 3rd.

DEPT: _____ DIVISION: _____ CLASS: _____

Species: _____ Hail Damage
Variety: _____

EXHIBIT DESCRIPTION REQUIRED: _____

-----Fold Here-----

NAME: _____

ARAPAHOE COUNTY FAIR
HOMEGROWN/HOME HARVESTED
ENTRY TAG

PLEASE CIRCLE: JUNIOR (18 yrs. & under) SENIOR (19 yrs. & older)

Office Use Only:
Entry # _____
PLACING: (Please Circle) 1st. 2nd. 3rd.

DEPT: _____ DIVISION: _____ CLASS: _____

Species: _____ Hail Damage
Variety: _____

EXHIBIT DESCRIPTION REQUIRED: _____

-----Fold Here-----

NAME: _____

ARAPAHOE COUNTY FAIR
HOME GROWN/HOME HARVESTED
ENTRY TAG

PLEASE CIRCLE: JUNIOR (18 yrs. & under) SENIOR (19 yrs. & older)

Office Use Only:
Entry # _____
PLACING: (Please Circle) 1st. 2nd. 3rd.

DEPT: _____ DIVISION: _____ CLASS: _____

Species: _____ Hail Damage
Variety: _____

EXHIBIT DESCRIPTION REQUIRED: _____

-----Fold Here-----

NAME: _____

ARAPAHOE COUNTY FAIR
HOMEGROWN/HARVESTED
ENTRY TAG

PLEASE CIRCLE: JUNIOR (18 yrs. & under) SENIOR (19 yrs. & older)

Office Use Only:
Entry # _____
PLACING: (Please Circle) 1st. 2nd. 3rd.

DEPT: _____ DIVISION: _____ CLASS: _____

Species: _____ Hail Damage
Variety: _____

EXHIBIT DESCRIPTION REQUIRED: _____

-----Fold Here-----

NAME: _____