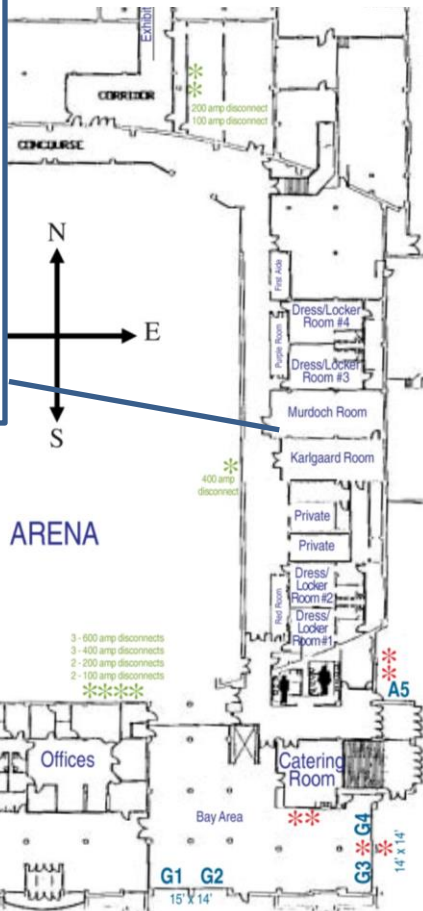
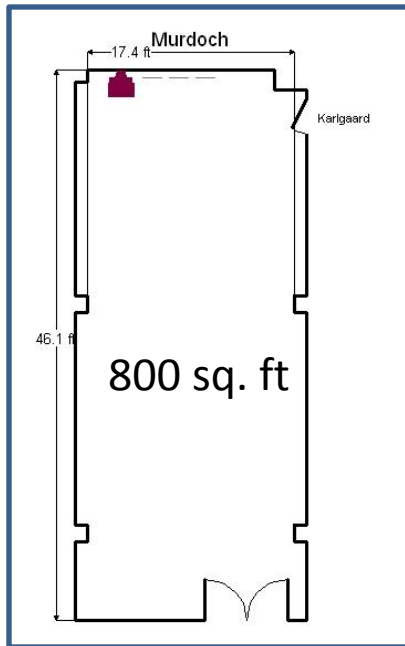


# Murdoch Room

Located on the East Side of the Arena.



### AV Options:

\*AV equipment may be provided at an additional fee, price list can be provided by request

- Secured Hard-line Internet
- Cable
- Phone
- Portable Sound

### Room Capacities

\*This is our recommended capacities to maintain fire code for isle and entries

- Classroom: 46 ppl
- Theater: 64 ppl
- U-Shape: 32 ppl
- Box Set: 36 ppl

