

# CAM-PLEX

## Heritage Center Technical Information



### Mailing and Street Address:

1635 Reata Drive  
Gillette WY 82718

Office: 307-682-0552  
Fax: 307-682-8418

### Staff:

Cam-Plex Tech On Call: 307-689-4989  
Adam Schuff, Technical Director

[adam@cam-plex.com](mailto:adam@cam-plex.com)

Kyle Harbour, Asst Tech Director  
Tamara Keierleber, Asst Tech Director

[kyle@cam-plex.com](mailto:kyle@cam-plex.com)

[tamara@cam-plex.com](mailto:tamara@cam-plex.com)

Paul Storale, Performing Arts Manager

[paul@cam-plex.com](mailto:paul@cam-plex.com)

Ticket Office: 307-682-8802

[ticket@cam-plex.com](mailto:ticket@cam-plex.com)

Karrie Allen, Box Office Manager

[karrie@cam-plex.com](mailto:karrie@cam-plex.com)

### Heritage Center Theatre:

Built in 1989, Renovated and reopened 2020.

914 Seats in Total: 641 Main Floor, 273 Balcony (see pg 7)

Map on Page 6.

### General Policies:

House opens 30 minutes prior to curtain

Building is smoke free unless part of action on stage

30 seconds of archival video footage may be taken of each event

Some lineset loads will not be stripped- see schedule for details

### Handicapped Access:

Handicapped seating available: 8 wheel chair locations with companion seat- 4 on House Left and 4 on House Right.

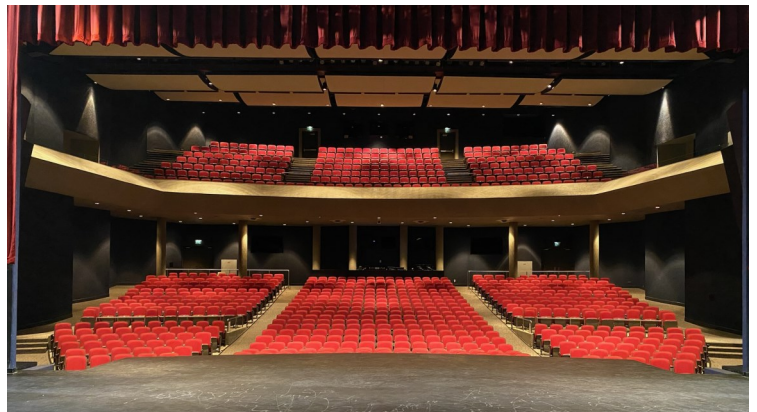
5 Handicapped accessible Restroom stalls.

Assisted Listening Equipment available upon request

### Stage Dimensions:

- Proscenium: 46' wide x 24' high
- Stage Depth: 40' Deep from Plaster line to back wall obstructed by supports, 38' Deep unobstructed.
- Apron: Curved apron begins 6'9" Downstage of Plaster Line and extends out to 10'8" from Plaster Line at Center. 1'11" of the apron is permanent stage floor, the remainder is removable orchestra pit cover.
- Orchestra Pit floor is 92" below stage floor. 83" clearance when covered.
- Stairs to House on both sides of apron can be covered or available.
- Stage Height: 3'5" above house floor
- Grid Height: 55', accessible via spiral stairs from midrail
- SR Wing: 16' of stage floor from edge of proscenium, plus 15' of concrete floor in loading dock side stage area
- SL Wing: 13' from edge of proscenium to flyrail
- Trap: 1 trap of 3'3"x3' is available with advance notice.
- Stage floor: Maple, tongue in groove painted flat black.

\*Securing to stage floor is discouraged and requires prior arrangements.





**Loading Area:**

Loading door is 12'3" wide x 14'2" high located Upstage Right. One truck can be accommodated at a time. Loading door and stage are ground level. 8'x8' hydraulic lift available for unloading from truck height. Stage Parking Lot can accommodate 36 standard vehicles or 5 busses or trucks.



**Crew:**

Local non-union crew, facility staff is supplemented with temp labor.

**Front of House:**

Accessible stage right through 7' wide hall with 5'11" doorway

**Crossover Available:**

Upstage of full black, through shop behind upstage wall, or through basement hallway (DSR/USL shop access)

**Storage:**

Available in approximately 800 sq ft of shop space behind up-stage wall.

**Green Room/ Rehearsal Room:**

Located immediately adjacent to the stage right wing. 25' x 42'9" equipped with a small kitchenette; including a refrigerator and microwave. Ballet bars on one wall, mirrors on two walls. And yes, somehow our green room is actually green.



**Rigging:**

53 single purchase linesets on 8" centers.  
 Battens: 1 1/2" schedule 40 pipe (1.9" outer diameter)  
 Lift Lines: 5 per batten, 12'8" span between  
 Lines 1-46: battens are 56' long  
 Lines 47-54: gradually shorten to a final length of 48'  
 Max Trim: 52'; Max Trim on Electrics: 32'  
 Low Trim: 4'9"  
 Arbor Capacity: 800 lbs; Arbor Capacity on Electrics: 1,000 lbs  
 Available weight: 10,000 lbs  
 Flyrail: Stage left, ground level  
 Midrail: 26' up on SL, US, and SR.  
 Pins and ropes available  
 Loading Gallery: 47' up on SL.  
 See Lineset Schedule on Page 5 for more information.

TABLE A: LOAD SPACING TABLE	
SUSPENDED LOAD (LBS)	'X' DIMENSION (MIN.)
3,501-4,000	7'-3"
3,001-3,500	6'-9"
2,501-3,000	6'-3"
2,001-2,500	5'-9"
1,501-2,000	5'-3"
1,001-1,500	4'-6"
501-1,000	3'-9"
≤500	2'-9"

NOTES  
 1. X = MINIMUM ALLOWABLE CENTER TO CENTER SPACING OF SUSPENDED LOADS.

**Stage Equipment Available:**

- 1: Epson Pro L 1755 WUXGA 1920x1200 15,000 lumen projector
- 1: 2500 lb capacity Toyota Forklift (with advance notice)
- 1: Genie GR20 driving personnel lift
- 64: Chairs (Wenger series 500 black)
- 64: Music Stands (Wenger black)
- 17: Music Stands with shelf (Wenger black)
- 10: Music Stand Lights (120v)
- 1: Orchestra Shell (Full Stage Wenger Stage Master Shell, cream)
- 6: Choral Risers (Wenger 3 step)
- 1: 9' Steinway Grand Concert Piano
- 1: 6' Steinway Grand Piano
- 1: Yamaha Clavinova CLP-240
- 1: Yamaha MX-88 Keyboard
- 2: Full Lectern
- 2: Table Top Lectern
- 4x8 Platforms (Wenger Portamaster):
  - 4: 8" Height
  - 8: 16" Height
  - 4: 24" Height
  - 8: 32" Height

**Dance Floor:**

5 pieces @ 63" x approx. 48': covers total of 26' of stage depth.

**Softgoods:**

Act Curtain, Teaser, and Tormentors are Crimson Red.  
 Act Curtain can travel or guillotine. Travel operation is stage left. Max opening of act curtain is 44'.  
 Teaser is 12' x 55'  
 Tormentors are 26' x 8'  
 5 Black Velour Borders available at 12' x 55'  
 4 pairs Black Velour Legs available at 26' x 12'  
 1 Midstage Full Black Traveler. Operated stage left. Max opening: 40'6"  
 1 Upstage Full Black Traveler. Operated stage left. Max opening: 34'6"  
 1 Upstage Full Black non- traveling  
 1 White seamless bleached muslin Cyclorama (cyc) at 30' x 52'  
 1 Black Scrim 26' x 52'

**Grid:**

Structural engineer evaluation completed in 2016.  
 Subway Grating on Grid Floor allows points to be rigged using 4' pipes running SL to SR. Per structural evaluation, One Ton points must be at least 5'3" apart.

## Power Disconnects:

- 1- 400 amp, 3 phase, 5 wire Disconnect Stage Right
- 1- 400 amp, 3 phase, 5 wire Disconnect Upstage Left in Shop
- 1- 150 amp, 3 phase, 5 wire Disconnect Stage Right.

## Lighting

Dimmers: ETC Sensor 3: 349 2.4 kW Dimmer per circuit  
Control: ETC Ion 1024 at FOH control booth  
Remote: ETC iRFR app on iPad  
Houselights: Controlled from DMX or stations available at Stage Right and at FOH control booth.  
Transfer Panel: Stage Right. 32 FOH Circuits. Stage Pin.

### Lighting Positions:

Far Catwalk: 32 Circuits. 46' and 40° from Plaster Line.  
Near Catwalk: 33 Circuits. 31' and 51° from Plaster Line.  
Proscenium Catwalk: 14 Circuits. 3' and 84° from Plaster Line.  
Far Box Booms: 6 Circuits each side. Architecturally Limited.  
Near Box Booms: 3 Circuits each side. Architecturally Limited.  
4 Electrics: See lineset schedule for details  
Floor Pockets and Wall boxes have 49 circuits.  
Midrail Drop Boxes have 24 circuits (8 boxes of 3 circ).

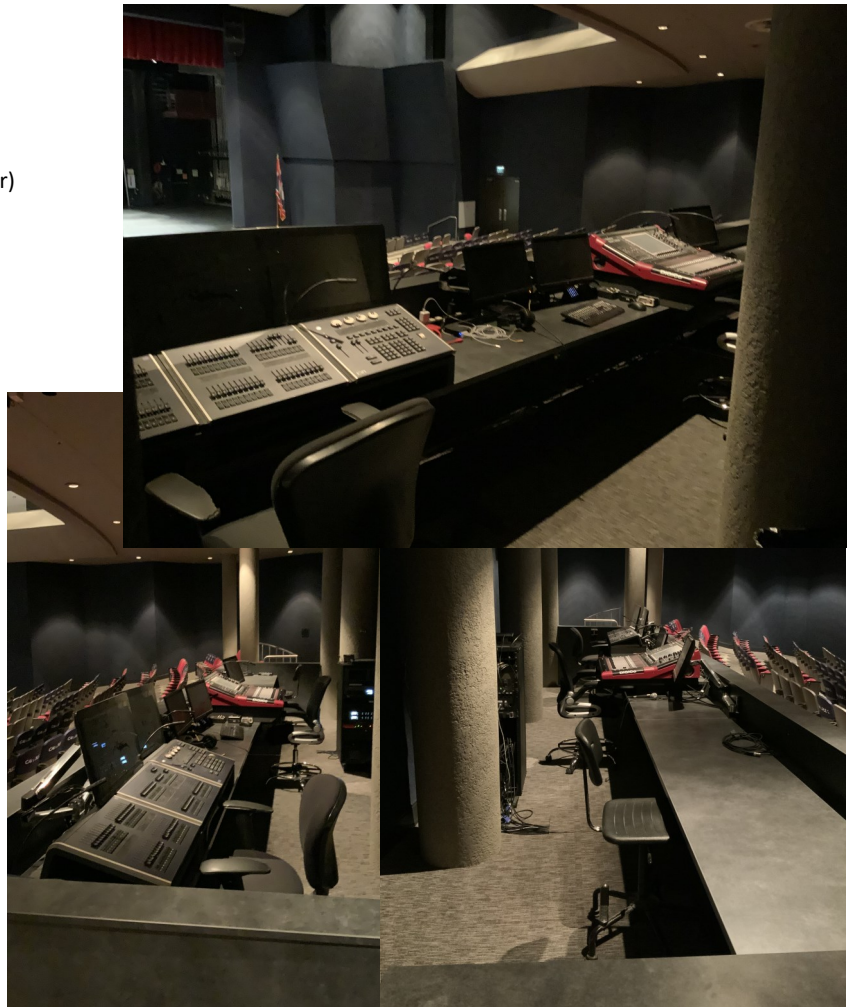
### Lighting Inventory

ETC Source Four ERS units with stagepin connector:  
125 @ 575w Units and 70 @ 750w units to be used with:  
20 @ 10°                    62 @ 36°  
24 @ 14°                    30 @ 50°  
36 @ 19°                    5 @ 70°  
36 @ 26°  
Other Units:  
25 @ ETC ColorSource Par (LED- RGLB)  
6 @ Chauvet Professional Rogue R2 Wash (LED RGBW mover)  
2 @ Chauvet Professional Rogue R1X Spot (mover)  
3 @ Martin Professional Mac Aura XB (LED RGBW mover)  
80 @ ETC Source Four Par  
7 @ Altman Spectra Cyc 100 (LED- RGBA)  
10 @ ADJ Dotz Par (LED- RGB)  
6 @ Worklights  
Follow Spots:  
2 @ Strong Xenon Super Trouper with 6 color boomerang  
2 @ Lycian Midget HP  
Spot Booth is a 90' throw at 25° to Plaster Line with 3 spot positions behind glass. Available power for 2 spots only.  
Booms:  
8 @ 2' Round Bases  
8 @ 15' Pipe  
8 @ 8' Pipe  
Special Effects:  
2 @ ADJ Mega Flash DMX Strobe light  
2 @ 18" Mirror balls  
1 @ LeMaitre G150 Fogger  
1 @ LeMaitre MVS Hazer  
4 @ Bubble Machine

## Sound

Mix Position: Control Booth at rear of house under balcony. 68'6" to Plaster Line.  
Snake: 75' Snake needed to reach stage from booth. Trench in HR Aisle.  
House Console: Digico SD9  
House Speakers: Tannoy VQ Series- L&R arrays (MB, MH95, DF85)  
House SPL: 103 db A weighted  
House Subs: JBL SRX828SP at L&R front corners  
House Amplifiers: Lab Gruppen  
House Processing: Lake LM26  
House Matrix: QSC Qsys Core 110f routes signal to Lobby, Cry rooms, Dressing Rooms, and Listening Assist system  
House Wireless: 8 Shure ULXD Systems. G50 band. Handheld or pack.  
House Snake: 48 x 12 located DSR with 16x4 branch snakes to DSL & pit  
House Equipment: Miscellaneous Shure, Sennheiser, AKG, and Crown mics available.  
Monitors: 10 JBL JRX100, 4 JBL PRX812.  
IEMs: 5 Shure PSM300 systems.  
House amps: Peavey KB3, Peavey Max115, Fender Hot Rod DeVille 212.  
Limited Backline is available.  
Clear-Com Communication Available:  
5 wireless belt packs, 13 standard belt packs, 13 single muff headsets, 1 double muff headset.

**FOH Control Booth:** 23'7" wide, depth varies 9' to 6'





## Wardrobe

Dressing rooms are in basement, down one flight of stairs, accessible DSR or in the USL corner of the shop.

Available: 2 irons, 3 ironing boards, 2 steamers, 3 portable 8' racks.

2 washer/dryer sets are available in Laundry Room in basement.

\*There is no elevator or lift to the basement. The only access to the basement is via stairs or lowering into the open pit (non-hydraulic).



### 2 Star Dressing Rooms

(10'x12'): Each has 1 lit mirror, 1 shower, 1 toilet, and 3' of hanging space.



### 1 Male Chorus Dressing room

for up to 20 people, including: 3 showers, 2 toilets, 1 urinals, 2 sinks, 2 small mirrors, and 9' of hanging space.



### 1 Female Chorus Dressing room

for up to 20 people, including: 4 showers, 4 toilets, 2 sinks, 2 small mirrors, and 9' of hanging space.



### 1 Shared make-up room

between chorus rooms, including: 2 sinks, 11 lit mirrors, and 1 full length mirror.

1 Trap Room (advance arrangements required) for up to 20 people, including 3 single mirrors and 1 double mirror.



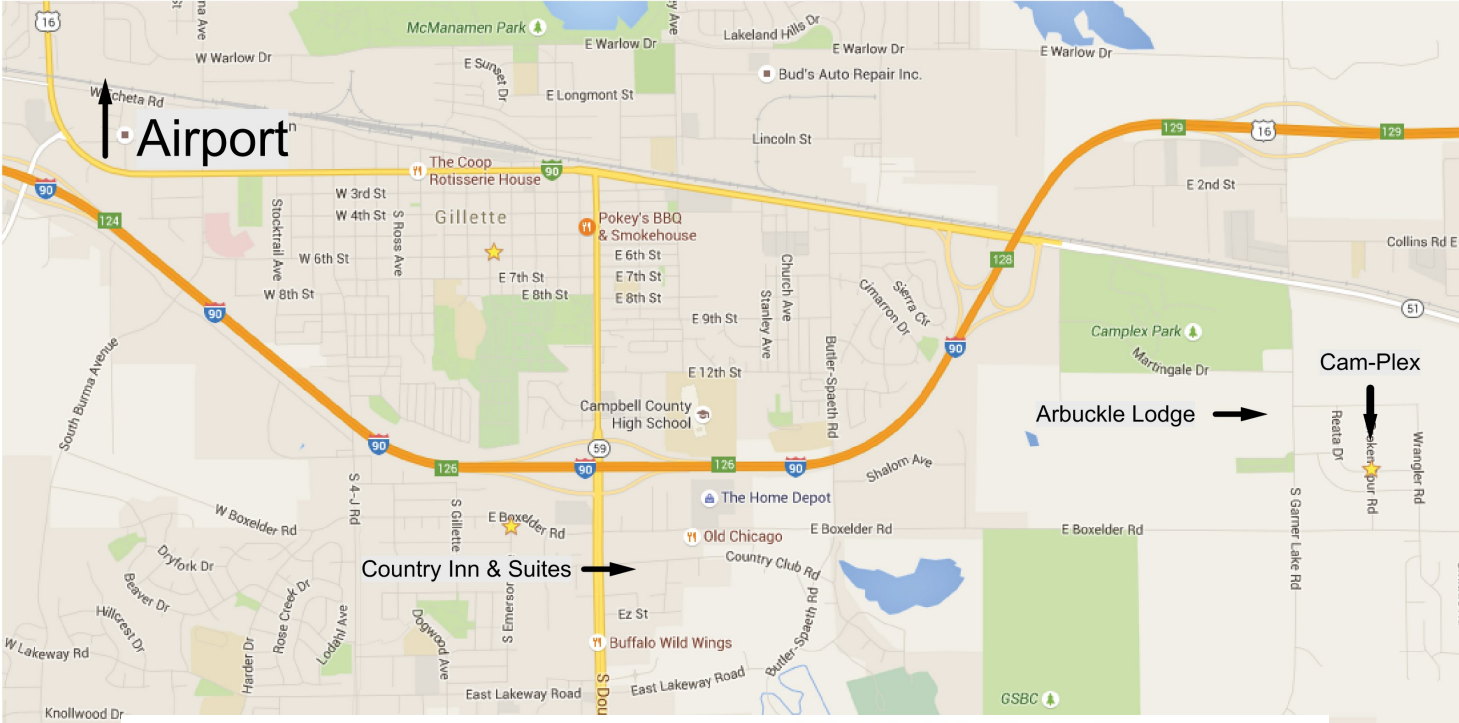
## CAM-PLEX HERITAGE CENTER LINESET SCHEDULE

Line	Distance	Purpose	Notes
1	6"	Open	
2	1'2"	Teaser	Crimson Color
3	1'10"	Torms	Crimson Color
4	2'6"	Main Curtain	Crimson Color, Non Moveable, Guillotine/ Traveler
5	3'2"	open	
6	3'10"	1st Electric	Non Moveable
7	4'6"	open	
8	5'2"	1st Border	
9	5'10"	1st Legs	
10	6'6"	open	
11	7'2"	open	
12	7'10"	1st Orchestra Shell Canopy	Non Moveable
13	8'6"	open	
14	9'2"	2nd Border	
15	9'10"	open	
16	10'6"	2nd Legs	
17	11'2"	open	
18	11'10"	2nd Electric	Non Moveable
19	12'6"	open	
20	13'2"	open	
21	13'10"	Movie Screen	Non Moveable
22	14'6"	open	
23	15'2"	Midstage Traveler	Non Moveable, Black, Guillotine/ Traveler
24	15'10"	2nd Orchestra Shell Canopy	Non Moveable
25	16'6"	open	
26	17'2"	3rd Border	
27	17'10"	open	
28	18'6"	open	
29	19'2"	3rd Legs	
30	19'10"	3rd Electric	Non Moveable
31	20'6"	open	
32	21'2"	open	
33	21'10"	open	
34	22'6"	open	
35	23'2"	open	
36	23'10"	3rd Orchestra Shell Canopy	Non Moveable
37	24'6"	open	
38	25'2"	open	
39	25'10"	4th Border	
40	26'6"	4th Legs	
41	27'2"	open	
42	27'10"	4th Electric	Non Moveable
43	28'6"	open	
44	29'2"	open	
45	29'10"	Upstage Cyc Electric	Cabled, Not an Electric
46	30'6"	open	
47	31'2"	open	53'2.5" batten
48	31'10"	Upstage Traveler	Non Moveable, Black, Guillotine/ Traveler, 52' batten
49	32'6"	open	51'10" batten
50	33'2"	Border	51'2" batten
51	34'6"	Legs	50'0.5" batten
52	35'2"	Bleached White Seamless Cyc	48'11" batten
53	35'10"	Full stage blackout, non-traveling	48' batten

Notes: All battens are 56' long unless noted. Max trim is 52', electrics max trim is 32', low trim is 4'9". 16" space between lines 50 and 51  
 All arbor capacities are 800 lb, except electrics are 1000 lb. 10,000 lbs of available weight. Non Moveable lines will not be stripped.



# Maps



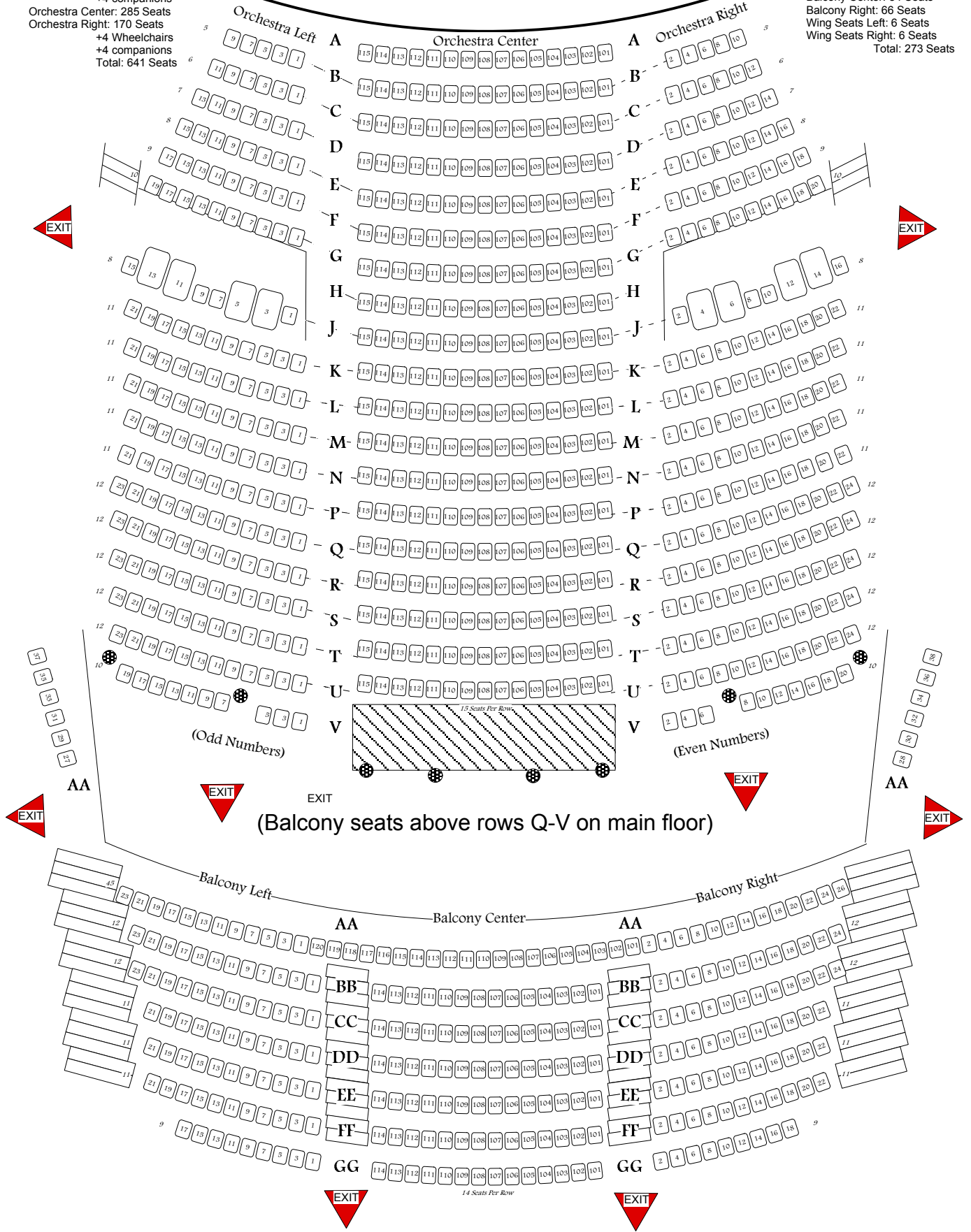
# HERITAGE CENTER SEATING LAYOUT

HOUSE SEATS 914 Total

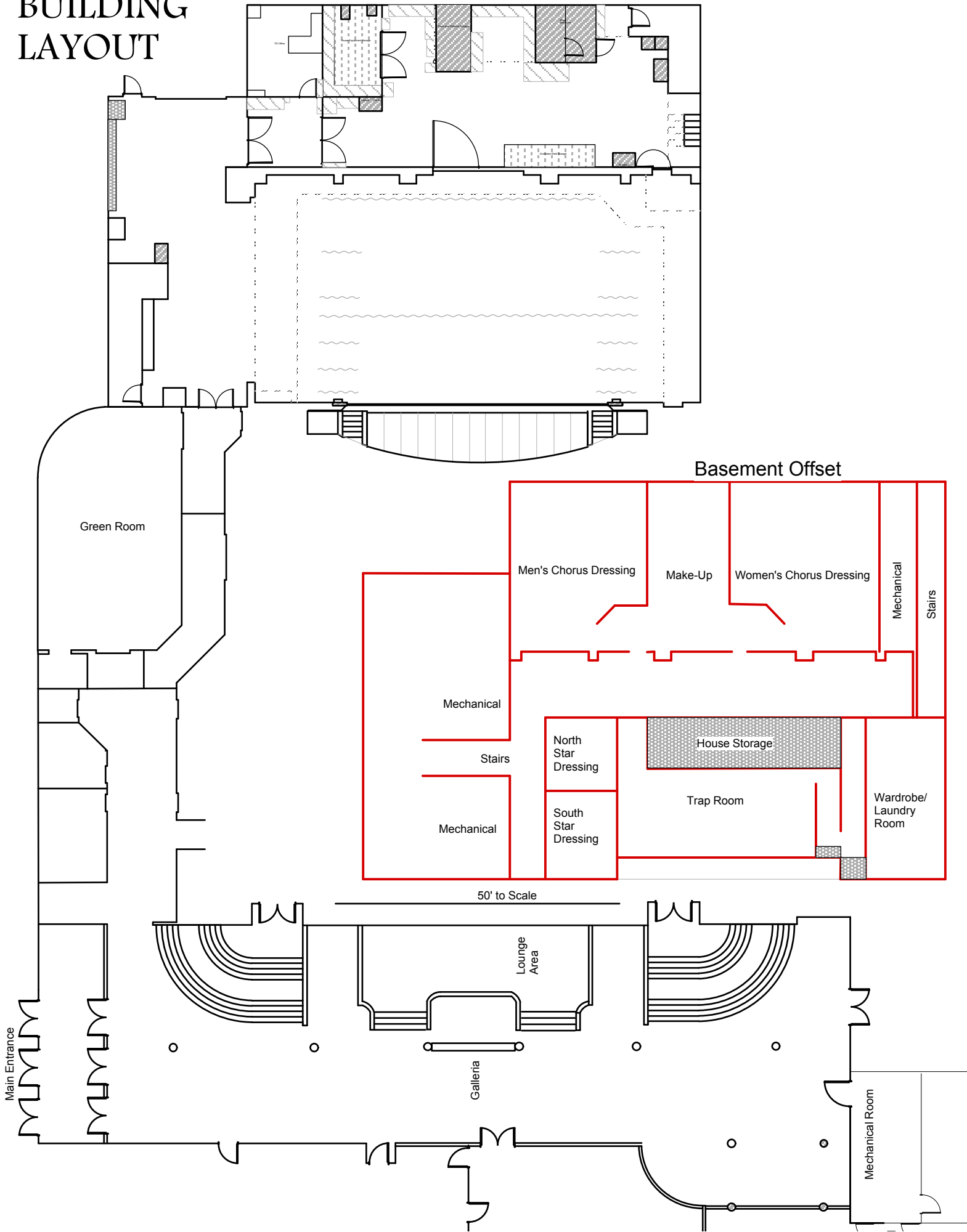
## STAGE

Main Floor  
 Orchestra Left: 170 Seats  
 +4 Wheelchairs  
 +4 companions  
 Orchestra Center: 285 Seats  
 Orchestra Right: 170 Seats  
 +4 Wheelchairs  
 +4 companions  
 Total: 641 Seats

Balcony  
 First Row: 45 Seats  
 Balcony Left: 66 Seats  
 Balcony Center: 84 Seats  
 Balcony Right: 66 Seats  
 Wing Seats Left: 6 Seats  
 Wing Seats Right: 6 Seats  
 Total: 273 Seats

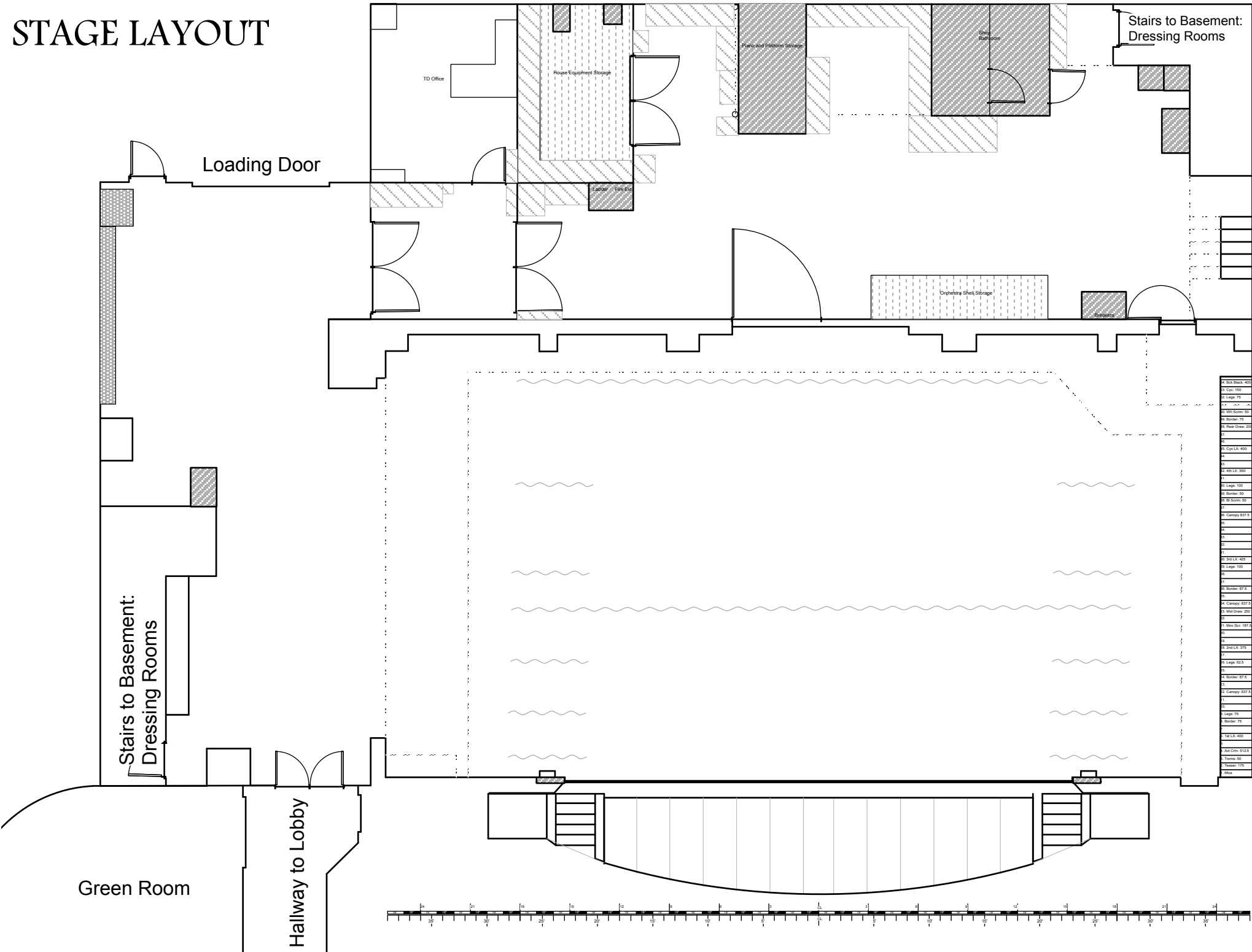


# BUILDING LAYOUT

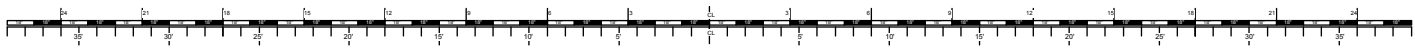




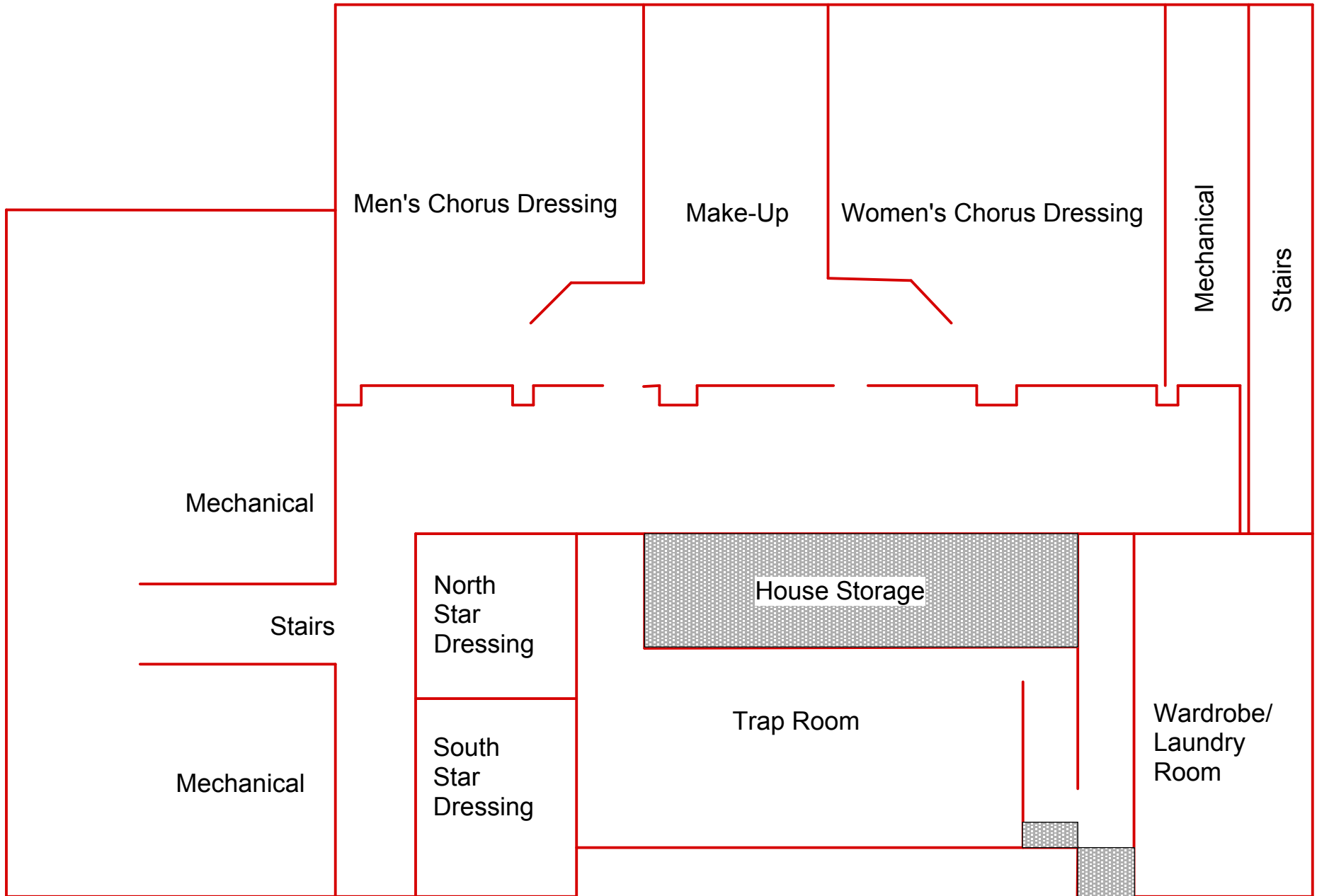
# STAGE LAYOUT



1	Box Seat	400
2	Cyc	100
3	Leg	75
4	Box Seat	400
5	Box Seat	50
6	Boxer	75
7	Rear Draw	200
8		
9	Cyc LK	400
10		
11	2nd LK	300
12		
13	Leg	100
14	Boxer	50
15	Box Seat	50
16		
17	Campy	807.5
18		
19		
20		
21	2nd LK	425
22		
23	Leg	100
24		
25	Boxer	87.5
26		
27	Campy	807.5
28	Mid Draw	200
29		
30	Mid Seat	87.5
31		
32	2nd LK	375
33		
34	Leg	82.5
35	Boxer	87.5
36		
37	Campy	807.5
38		
39		
40	Leg	75
41	Boxer	75
42	1st LK	400
43		
44	Ad On	312.5
45	Trailer	50
46	Trailer	175
47		
48	Mid	



# BASEMENT LAYOUT



SR Midrail drop circuits available:  
337-348  
(337-339 in use on cyc electric)

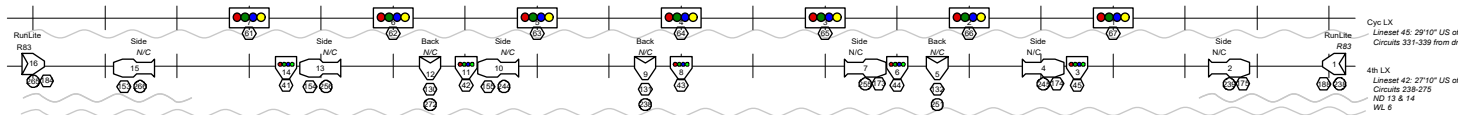
SR Floor circuits available:  
302-324

US Floor circuits available:  
296-301

SL Floor circuits available:  
276-295

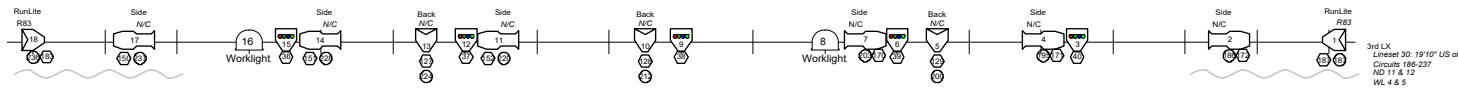
Landing Platform: 15' Clearance  
Midrail: 24' Clearance US & SR  
196" Clearance SL (ducts)

SL Midrail drop circuits available:  
325-336  
(337-339 in use on cyc electric)



Cyc LX  
Lineast 45: 29'10" US of PL  
Circuits 331-339 from drops

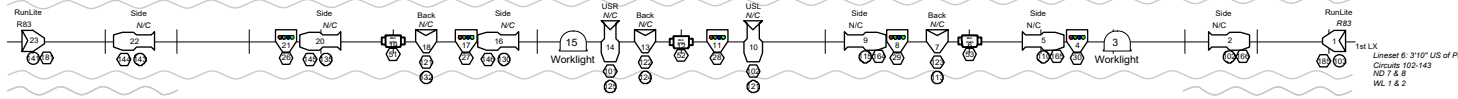
4th LX  
Lineast 45: 27'10" US of PL  
Circuits 238-275  
ND 13 & 14  
WL 4



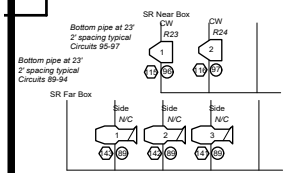
3rd LX  
Lineast 30: 19'10" US of PL  
Circuits 186-237  
ND 1 & 2  
WL 4 & 5



2nd LX  
Lineast 18: 11'10" US of PL  
Circuits 144-185  
ND 9 & 10  
WL 3

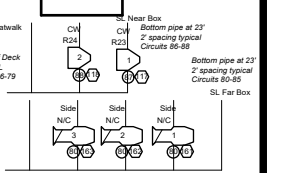


1st LX  
Lineast 6: 3'10" US of PL  
Circuits 102-143  
ND 7 & 8  
WL 1 & 2



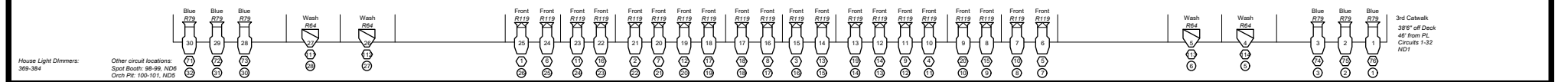
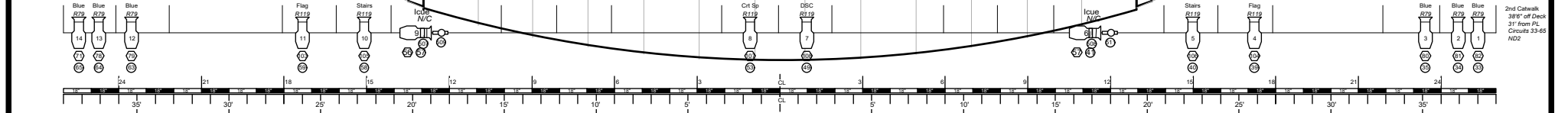
Bottom pipe at 23'  
2" spacing typical  
Circuits 95-97

Bottom pipe at 23'  
2" spacing typical  
Circuits 89-94



Bottom pipe at 23'  
2" spacing typical  
Circuits 85-88

Bottom pipe at 23'  
2" spacing typical  
Circuits 80-85



ETC Source 4 ERS: 125@ 375w units, 70@ 750w units  
Lens Type: 10° 14° 19° 26° 36° 50° 70°

Symbol:

Available: 20 24 36 36 62 30 5

ETC Source 4 Par: 80@ 750w units

VNSP NSP MFL WFL XWFL

ETC Accessories:  
EZ Iris I-Cue

ETC ColorSource Par 25 available  
\*25 Wash Based, Different Available

Altman Spectra Cyc 100 7 available

Instrument Key

PURPOSE  
COLOR

Line  
Channel  
Dimmer

Heritage Center Theatre

Drawn by: Schuff  
Last Update: 1/19/22  
File: //Calisto/Technical/Venues/Heritage Center/HC Lighting/Heritage Center Master.wvx

Drawing: House Plot  
Scale: 3/32" = 1'0"  
Page: 1 of 1



# SECTION

