





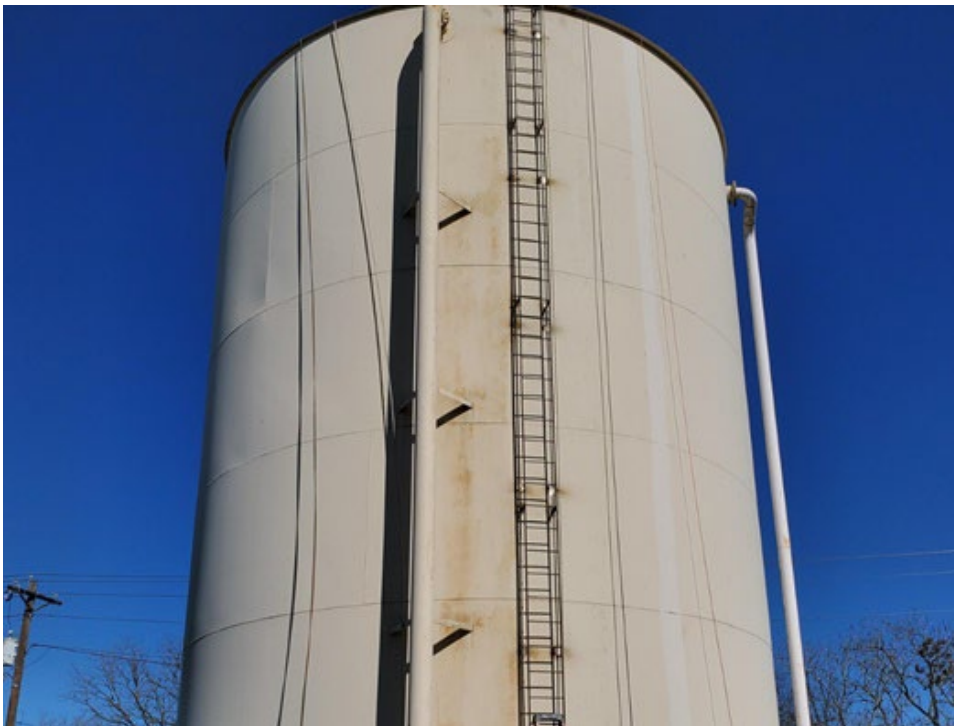




300,000 Gallon Steel
Standpipe Tank
"Water Tank #2"
City of Gonzales
Gonzales, Texas

Observation No. 006
January 21, 2020

1. Roof rigging coupling.



2. Shell ladder installed.



Observation No. 007
January 23, 2020

Shell manhole cover davit
arm.



Observation No. 008
January 24, 2020

3. Interior floor bracket
removed.



4. Floor area ground.



5. Interior shell angle brackets removed and ground.



Observation No. 010
January 27, 2020

6. Exterior shell manhole cover lifting handles installed.



Observation No. 011
January 28, 2020

7. Interior abrasive on site.



300,000 Gallon Steel
Standpipe Tank
“Water Tank #2”
City of Gonzales
Gonzales, Texas

Observation No. 012
January 29, 2020

1. Generator on site.



2. Dust collector on site.



3. Dehumidification unit on site.

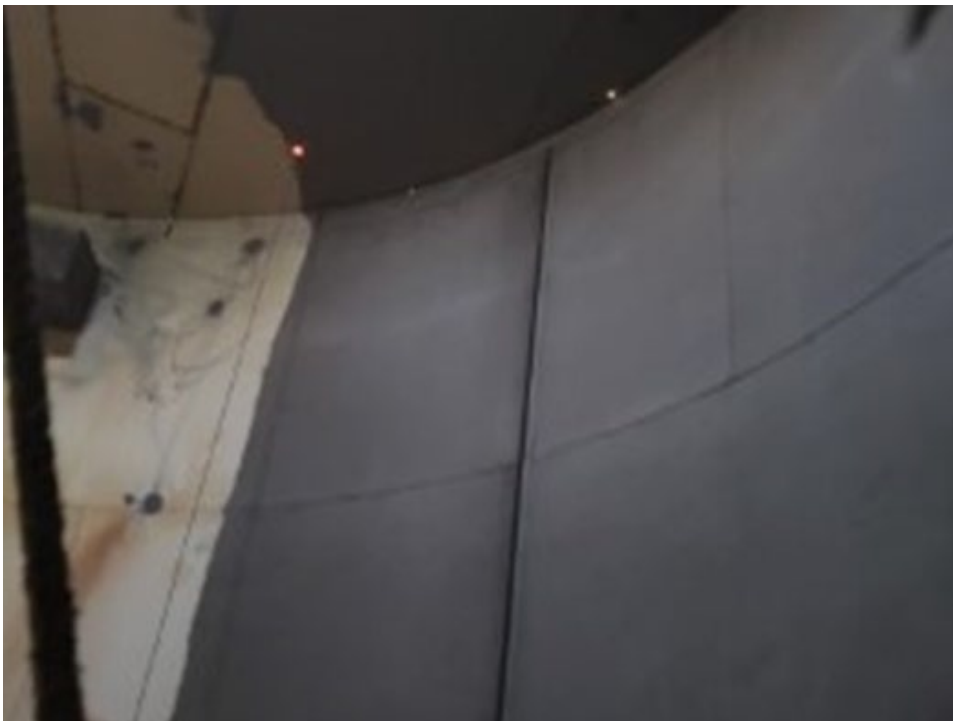


Observation No. 013
January 30, 2020

4. Exterior roof safety railing toe bars installed.



5. Exterior roof manhole cover with padlock brackets installed.



Observation No. 014
January 31, 2020

6. Surface preparation meets SSPC-SP 10.



7. Surface preparation meets SSPC-SP 10.



Observation No. 015
February 1, 2020

8. Weir box ready to install.



Observation No. 016
February 2, 2020

9. Surface preparation meets
SSPC-SP 10 modified.



10. Surface preparation meets
SSPC-SP 10 modified.



Observation No. 017
February 3, 2020

11. Prime Coat.



12. Prime coat.



13. Exterior roof outriggers installed.



14. Interior weir box installed.



15. Interior weir box installed.



16. Exterior roof hole welded.



300,000 Gallon Steel
Standpipe Tank
“Water Tank #2”
City of Gonzales
Gonzales, Texas

Observation No. 020
February 6, 2020

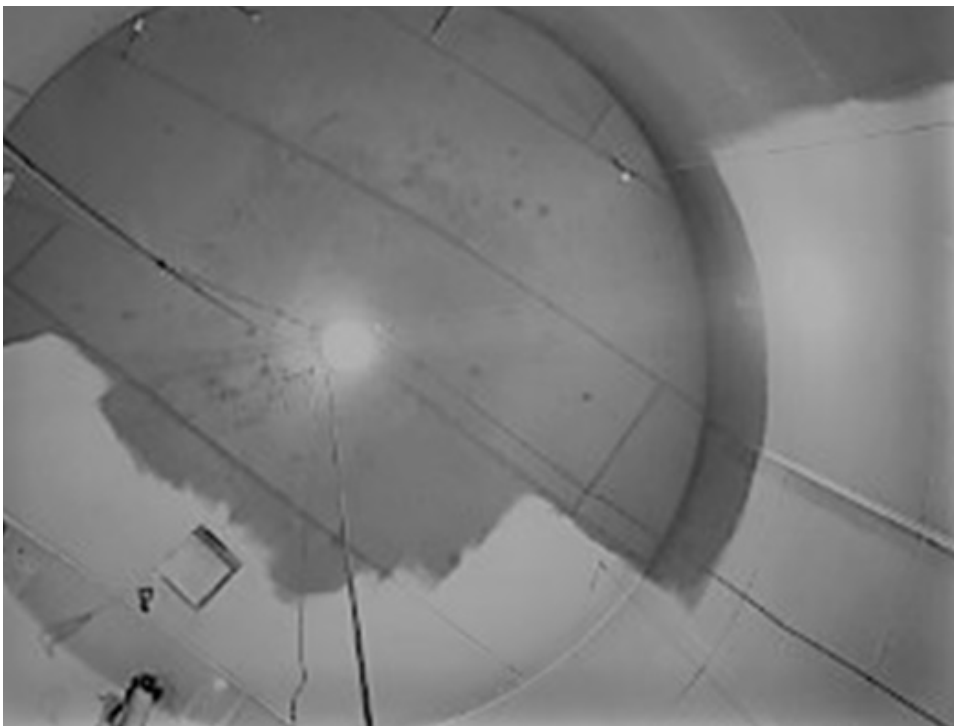
1. Surface preparation meets
SSPC-SP 10 modified.



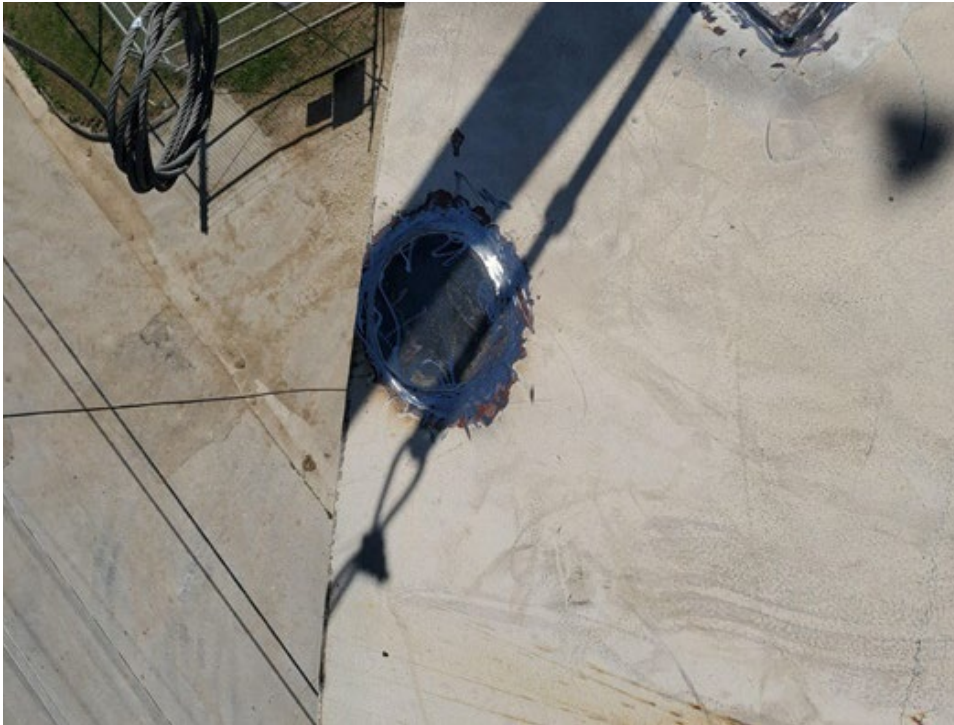
2. Surface preparation meets
SSPC-SP 10 modified.



3. Surface preparation meets SSPC-SP 10 modified.



4. Surface preparation meets SSPC-SP 10 modified.



Observation No. 021
February 7, 2020

5. Roof patch plate installed.



6. Roof patch plate installed.



7. Roof patch plate installed.



8. Roof patch plate installed.



9. Roof patch plate installed.



10. Dust collector.