

# "HOW DOES YOUR GARDEN GROW?"

## NGC STANDARD FLOWER SHOW

### PRESENTED BY

### **The Council of Garden Clubs of Greater Charleston**

A member of:

National Garden Clubs, Inc.

South Atlantic Region

The Garden Club of South Carolina, Inc.

East Lowcountry District

AND

### **The Exchange Club Fair of Charleston, Inc.**

### **Flower Department**

Exchange Park – 9850 HIGHWAY 78

Ladson, SC

843-572-3161

ON

THURSDAY, OCTOBER 27 – MONDAY, OCTOBER 31, 2022  
and TUESDAY, NOVEMBER 1 – SATURDAY, NOVEMBER 5, 2022

**OPEN**

MONDAY, TUESDAY, WEDNESDAY, THURSDAY, FRIDAY 3PM – 9PM

SATURDAY 10AM – 9PM

SUNDAY 12PM – 9PM

### **Participating Federated Garden Clubs**

Alhambra Garden Club	Magnolia Garden Club
Berkeley Hills Garden Club	Melrose Garden Club
Camellia GC of Greater Charleston	Riverland Terrace Garden Club
Edgewater Park Garden Club	St. Paul's Garden Club
Isle of Palms Garden Club	South Windermere Garden Club
Ivy Garden Club	The Garden Club of Charleston
	Town and Village Garden Club

### **Additional Clubs and Societies**

Charleston Lowcountry Rose Society      Coastal Carolina Camellia Society

Berkley, Charleston, and Dorchester Counties Master Gardeners

**Admission fee to the Fairgrounds. Flower Show is free and open to the Public.**

# Table of Contents

Cover page	1
Table of Contents	2
Committee Chairmen	3
Schedule for the Shows	4
General Rules	4
Standard System of Awarding	6
NGC Top Exhibitor Awards being offered	6
DIVISION I. Horticulture	
Horticulture Rules	9
Horticulture Scales of Points	11
GCSC Conservation Lists of Endangered and Invasive Plants	12
Horticulture Entry Card Example	14
Sections and Classes	15
DIVISION II. Design	
Design Rules	24
Design Scale of Points	25
Sections and Classes	26
DIVISION III. Education	
Education Rules	28
Education Scale of Points	29
Section A. and Exhibits	29
DIVISION IV. Youth	
Youth Rules	30
Scale of Points	30
Section A. and Classes	31
DIVISION V. Botanical Arts Artistic Crafts	
Botanical Arts Artistic Crafts Rules	32
Botanical Arts Scale of Points	32
Section A. and Classes	33

If you wish to volunteer to help during the show, please see Sign-up Genius website for opportunities listed by date and time:

<https://www.signupgenius.com/go/5080f4aada923a4f58-east>



## SCHEDULE FOR THE SHOWS

Wednesday, October 26	9AM – 12PM 1 – 4PM	Setup and prepare bottles Entries for all Divisions accepted
Thursday, October 27	6:15 – 10AM 10AM – 12PM 12 – 3PM 3 – 9PM	Entries for all Divisions accepted Check all entries for proper placement Judging Open to the Public
Friday, October 28	3 – 9PM	Open to the Public
Saturday, Oct. 29	10AM – 9PM	Open to the Public
Sunday, Oct. 30	12PM – 9PM	Open to the Public
Monday, October 31	9 – 10:30AM 11AM – 2PM 3PM – 9PM	Prepare bottles for next show ONLY Horticulture entries accepted Open to the Public
Tuesday, November 1	6 – 7AM  7 – 10:30AM 10:30AM – 12PM 12 – 3PM 3 – 9PM	All entries and ribbons from 1 <sup>st</sup> show removed (Except Education) All entries for second show accepted Check all entries for proper placement Judging Open to the Public
November 2 – November 4	3 – 9PM	Open to the Public
Saturday, November 5	10AM – 9PM	Open to the Public
Monday, November 7	11:30AM – 1PM	All entries and ribbons removed from 2 <sup>nd</sup> show



## GENERAL RULES

Please also read the rules in each Division

1. This Flower Show conforms to the standards established by National Garden Clubs, Inc. (NGC). The *Handbook for Flower Shows* (HB) Revised 2017, 2<sup>nd</sup> Edition (revised January 2022) and can be found at: [https://gardenclub.org/sites/default/files/2022-01/ngc-handbook-for-flower-shows-january-2022-revision\\_0.pdf](https://gardenclub.org/sites/default/files/2022-01/ngc-handbook-for-flower-shows-january-2022-revision_0.pdf) The handbook is the authority for all issues not covered by the schedule, which is the “Law of the Show.”
2. The show is open for **all** to enter (not just garden club members), provided they adhere to the schedule requirements.
3. All entries will be received through the back-entrance door of the building.

4. **If an exhibitor signs up on our Sign-Up Genius website please send the appropriate Division Chairman a list of all entries with the required entry tag information before September 23, 2022. See page 14 of this schedule for contact information.**
5. Entry cards for HORTICULTURE may be filled out in advance (typed, in water-proof ink, with labels, or hand written in pencil). Entry Cards are available from the Horticulture Entries Chairman see page 2 of this schedule for contact information. They are also available at the back-entrance door of the Flower Show building on entry dates.
  - a. Obtain an entry card for each Horticulture exhibit, if the card has not been filled out ahead of time by the exhibitor. All cards must have the exhibitor's entry number listed in the box on the top right (See the Registrar the day of the show at the table just inside the door).
  - b. Horticulture exhibitors will get bottles filled with water from outside the back entrance door. Place plant material and if needed wedge it with clear plastic wrap (supplied by the committee) to make sure that it remains in the bottle with the plant facing the front. The entry card will be attached to the front of the bottle with a paper clip. Please use a plant stake to hold the entry card in potted plants.
  - c. The entry will then be taken inside to the table marked Classification. After it is checked it will be taken to proper location in the show by a Placement volunteer.
6. All other Divisions entries will have the entry tag filled out by the committee and it will be at exhibitor's proper place on the show floor. There will be someone waiting to escort exhibitors to their space so that they may set up their entry.
7. The Classification Chairmen for each Division check exhibits for conformity to the schedule prior to judging. Each entry card must be initialed in the top left corner by a member of the Classification Committee. Final determination for conformance is the judges' responsibility.
8. The General Chairman and the Classification Chairmen for each Division are available during judging for possible consultation. They, along with judges and clerks, are the only personnel allowed on the floor during Judging.
9. The decisions of the judges are final. Awards may be withheld if not merited.
10. There must be an emphasis on FRESH plant material. NO artificial plant material is permitted in any exhibit in any division.
11. Each exhibitor is limited to one entry per class, except in the Horticulture Division. Horticulture exhibitors may make more than one entry per class if each is a different species, variety, cultivar, type or color.
12. The Exchange Club Fair of Charleston, Inc. and The Council of Garden Clubs of Greater Charleston will strive to assure the safety of all items after arrival and placement, but are not responsible for any loss or damage to exhibits.
13. No plants on the South Carolina conservation list are permitted in any designs or horticultural exhibits, see page 14 in this schedule for a list of plants. These plant

materials may only be used in Flower Shows for Educational Exhibits and should never be collected from the wild.

14. Any plants listed as Invasive plants, Noxious plants, or the Exotic Invasive species of SC may NOT be exhibited in any Division of this Flower Show. See this schedule page 14 for a list which is also available from Clemson Extension <https://www.se-eppc.org/southcarolina/invasivePlants.cfm>
15. **Once pre-registration is made in a Division, it is the responsibility of the exhibitor to fulfill their obligation or furnish a substitute for the exhibit. Please contact the appropriate Division Chairperson to inform them of a change, see page 2 of this schedule for contact information.**
16. The ultimate authority for judging is the *Handbook for Flower Shows*, 2017 Revised, 2<sup>nd</sup> Edition (revised January 2022). It may be downloaded for free from [https://gardenclub.org/sites/default/files/2022-01/ngc-handbook-for-flower-shows-january-2022-revision\\_0.pdf](https://gardenclub.org/sites/default/files/2022-01/ngc-handbook-for-flower-shows-january-2022-revision_0.pdf)  
This National Garden Clubs, Inc. publication will be known as the Handbook or HB when referenced hereafter.

## STATEMENT OF AWARDS

### THE NGC STANDARD SYSTEM OF AWARDING

The NGC Standard System of Awarding is used in all Divisions. HB p 5

### FLOWER SHOW AWARDS RIBBONS

Placing	Ribbon Color	Point Value	Quantity available per class
First	Blue	90+	1
Second	Red	85+	1
Third	Yellow	80+	1
Honorable Mention	White	75+	1 or more

**ALL NGC TOP EXHIBITOR AWARDS** can be found in a Chart HB pp 46-48

## **HORTICULTURE DIVISION NGC TOP EXHIBITOR AWARDS OFFERED**

**Award of Horticultural Excellence:** One award is offered to the highest scoring blue ribbon winner, scoring 95 or above and correctly named exhibit in the entire Horticulture Division. A plant must be identified by its botanical (binomial) name or its currently accepted scientific identification to be eligible for any Top Exhibitor Award. Only Section Award winners, (Arboreal Award, Awards of Merit, Collector's Showcase, Elfin Award, and Grower's Choice) are eligible for consideration for the Award of Horticultural Excellence. Rosette of Green, Orange, and Blue Ribbons. HB p 40

**Arboreal Award:** Three awards are offered to the highest scoring blue ribbon winner, scoring 95 or above, correctly named woody exhibit, meeting all section requirements in Sections L, M, and N. Rosette of Green Ribbons. HB pp 40-41

**Award of Merit:** Nine awards are offered to the highest scoring blue ribbon winner, scoring 95 or above, correctly named herbaceous (non-woody) exhibit, meeting all section requirements in Sections D, E, F, G, H, I, J, O, and Q. Rosette of Orange Ribbons. HB p 41

**Collector's Showcase:** One award is offered to the highest scoring blue ribbon winner, scoring 95 or above, correctly named exhibit, meeting all section requirements in Section P. Rosette of Brown and Green Ribbons. HB pp 41

**Elfin Award:** One award is offered to the highest scoring blue ribbon winner, scoring 95 or above, correctly named miniature/dwarf exhibit, meeting all section requirements in Section K. Small rosette of Chartreuse and Purple Ribbons. HB p 41

**Grower's Choice Award:** Three awards are offered to the highest scoring blue ribbon winners, scoring 95 or above, correctly named container grown exhibit, meeting all section requirements in Section A, B, and C. Rosette of Dark Green Ribbons. HB p 41

## **HORTICULTURE RECOGNITION AWARDS**

**Exchange Club Award:** One award is offered to an individual participating in the Horticulture Division by a committee of the Exchange Club of Charleston members. Rosette of gold and blue ribbons.

**Garden Club Award:** One award is offered to the garden club with the largest number of blue ribbons in the Horticulture Division. In case of a tie, 90+, red, yellow and white ribbons will be totaled if necessary. Rosette of Red and Blue Ribbons.

**Individual Sweepstakes Award:** One award is offered to the winner of the largest number of blue ribbons in the Horticulture Division. In case of a tie, 90+, red, yellow and white ribbons will be totaled if necessary. Rosette of Green and White Ribbons. HB p 46

## **DESIGN DIVISION**

### **NGC TOP EXHIBITOR AWARDS OFFERED**

**Award of Design Excellence:** One award is offered to the highest scoring design blue ribbon winner, scoring 95 or above, in the entire Design Division meeting all rules and requirements, entered by a single designer. Only designs winning a top Section Award are eligible for consideration. Rosette of Gold Ribbons. HB p 42

**Designer's Choice Award:** One award is offered to the highest scoring blue ribbon winner, scoring 95 or above, entered by an individual, meeting all section requirements in Section A. Minimum 4 exhibits per class. Rosette of Purple Ribbons. HB p 42

**Petite Award:** One award is offered to the most outstanding petite highest scoring blue ribbon winner, scoring 95 or above, entered by an individual, meeting all section requirements in Section B. Minimum 4 exhibits per class. Small rosette of Blue and White Ribbons. HB p 43

**Table Artistry Award:** One award is offered to the highest scoring blue ribbon winner, scoring 95 or above, entered by an individual, meeting all section requirements in Section C. Minimum 4 exhibits per class. Rosette of Burgundy Ribbons. HB p 43

### **DESIGN RECOGNITION AWARDS**

**Companion Award:** One award is offered to the highest scoring blue ribbon winner, scoring 90 or above, meeting all section requirements in Section D. Rosette of Teal Ribbons. HB p 46

**Exchange Club Award:** One award is offered to an individual participating in the Design Division by a committee of the Exchange Club of Charleston members. Rosette of gold and blue ribbons.

**Garden Club Award:** One award is offered to the garden club with the largest number of blue ribbons in Design Division. In case of a tie, 90+, red, yellow and white ribbons will be totaled if necessary. Rosette of Red and Blue Ribbons.

**Individual Sweepstakes Award:** One award is offered to the winner of the largest number of blue ribbons in the Design Division. In case of a tie, 90+, red, yellow and white ribbons will be totaled if necessary. Rosette of Green and White Ribbons. HB p 48

## **EDUCATION DIVISION**

### **NGC TOP EXHIBITOR AWARD OFFERED**

**Educational Top Exhibitor Award:** One award may be offered to the highest scoring, blue ribbon exhibit, scoring 95 or above, entered by one or more exhibitors. Minimum of 2 exhibits must be present. Rosette of Brown and White Ribbons. HB pp 43 – 44



## EDUCATION RECOGNITION AWARD

**Exchange Club Award:** One award is offered to an individual participating in the Education Division by a committee of the Exchange Club of Charleston members. Rosette of gold and blue ribbons.

## YOUTH DIVISION NGC TOP EXHIBITOR AWARD OFFERED

**Youth Top Exhibitor Award:** One award may be offered to the highest scoring, blue ribbon exhibit, scoring 90 or above, no minimum number of exhibits required. Rosette of Red/White/Blue Ribbons. HB p 44

## YOUTH RECOGNITION AWARD

**Exchange Club Award:** One award is offered to an individual participating in the Youth Division by a committee of the Exchange Club of Charleston members. Rosette of gold and blue ribbons.

## BOTANICAL ARTS ARTISTIC CRAFTS DIVISION NGC TOP EXHIBITOR AWARD OFFERED

**Botanical Arts Artistic Crafts Award:** One award is offered to the highest scoring blue ribbon exhibit, scoring 95 or above, entered by an individual, meeting all section requirements in Section A. A minimum of 4 exhibits per class. Rosette of Navy-Blue Ribbons. HB p 44

## BOTANICAL ARTS RECOGNITION AWARD

**Exchange Club Award:** One award is offered to an individual participating in the Botanical Arts Division by a committee of the Exchange Club of Charleston members. Rosette of gold and blue ribbons.

## DIVISION I. HORTICULTURE “...WITH SILVER BELLS AND COCKLE SHELLS.” Eligible for the Award of Horticultural Excellence

### RULES

1. The primary horticulture nomenclature resource for NGC Flower Shows is [plantsoftheworldonline.org \(https://powo.science.kew.org/\)](https://powo.science.kew.org/)
2. The NGC Exhibit Policies are printed in the HB p 55

3. All exhibits must be FRESH. Generally, single blossom specimens are exhibited one-half to three-fourths open. Multiple bloom stems have one-fourth to one-half of the flowers open. Plants should not be totally in the bud stage nor have all their flowers fully open.
4. All exhibits must have been grown by the exhibitor.
5. Plant material must be in its natural state and may not be altered by application (treatment) of oil, commercial “shine” products, etc. that change the natural appearance. No wiring of specimens is permitted.
6. Only foliage and/or flowers naturally grown and still attached to the specimen are permitted in the Flower Show. Unattached foliage is never included with a cut bloom specimen.
7. All plant material must have been in the possession of the exhibitor the appropriate number of days listed in this chart:

Type of Plant Material	Length of Possession
Aboreals (Woody Ornamentals)	6 months
Annuals	90 days EXCEPTION: no minimum for early maturing seeds or transplants
Combination Plantings	6 weeks
Houseplants	90 days
Perennials (Herbaceous)	90 days
Vegetables and Fruits	90 days EXCEPTION: no minimum for early maturing crops, such as lettuce, radishes, etc.

8. The rules for a single species, container-grown, or cut specimens are listed in the HB pp 58-59 or in the supplemental book *Horticulture Exhibiting and Judging* published by NGC.
9. In order to receive an NGC Top Exhibitor Award, the Exhibitor must identify his/her entry on the entry card by its binomial or currently accepted scientific designation HB p 57 or page 14 of this schedule. The common name written in parentheses below the binomial.
10. Cut specimens should not have foliage below the water line, except for *Gladiolus*.
11. If a plant is considered a flowering plant, it should be exhibited as a flowering specimen. Foliage plants may flower, but should be exhibited as foliage plants if they are grown for their leaves.
12. Specimens with a class designation in the schedule may not be entered in the “any other worthy” class.
13. The horticulture classification committee and/or General Chairman are free to subdivide classes by color, form, size, cultivar, variety or other distinguishing characteristics.
14. The Show Committee will furnish clean, clear, transparent, glass bottles/containers for display of cut specimens.
15. The Show Committee will furnish clear plastic wrap for exhibit wedging if needed.
16. Anchoring is not allowed. Container-grown plants must have been grown in the pots in which they are exhibited. Double potting is permitted. Containers must be clean.
17. Green Styrofoam may be used for wedging in Section D only, if furnished by the exhibitor.
18. The Scales of Points for Horticulture are listed below and in the HB p 129:

# HORTICULTURE DIVISION SCALES OF POINTS

## All Cut or Container-Grown Horticulture Specimens and Collections

(Arboreal, Flowering, Foliage, Fruit/Vegetables/Nuts, Collections)

Conformance	5
Plant Identification	5
<b><u>Peak of Perfection</u></b>	
Form	20
Color	20
Maturity/Size	20
Condition/Blemishes	15
<b><u>Grooming/Staging</u></b>	
Grooming	10
Staging	<u>5</u>
<b>Total Score</b>	<b>100</b>

## All Combination Plantings

Conformance	5
Plant Identification	5
Labeling	5
<b><u>Peak of Perfection</u></b>	
Form	10
Color	10
Condition	10
Show-worthy Size	5
Overall Effect	30
Creative/Distinctive	5
Grooming	10
Staging	<u>5</u>
<b>Total Score</b>	<b>100</b>

## Conservation List of Endangered and Threatened Plants

Adopted by Garden Club of South Carolina January 26, 2017

These plant materials may only be used in flower shows for educational exhibits and should never be collected from the wild.

*Amaranthus pumilis* (seaside amaranth)  
*Amphianthus pusillus* (little amphianthus)  
*Echinacea laevigata* (smooth purple coneflower)  
*Helianthus schweinitzii* (Schweintz's sunflower)  
*Helonias bullata* (swamp pink)  
*Hexastylis naniflora* (dwarf flower heartleaf)  
*Isotria medioloides* (small whorled pogonia)  
*Lindera melissifolia* (southern spicebush)  
*Lysimachia asperulifolia* (roughleaf loosestrife)  
*Oxypolis canbyi* (Canby's cowbane)  
*Ptilimnium nodosum* (piedmont bishopweed)  
*Rhus michauxii* (false poison sumac)  
*Ribes echinellum* (Miccosukee gooseberry)  
*Sagittaria fasciculata* (bunched arrowhead)  
*Sarracenia rubra* (Jones' pitcherplant)  
*Schwalbea americana* (chaffseed)  
*Sisyrinchium dichotomum* (blue-eyed grass)  
*Trillium persistens* (persistent wakerobin)  
*Trillium reliquum* (Confederate wakerobin)

*Uniola paniculota* (sea oats) are protected by the State of SC

**South Carolina Invasive Plants Banned from NGC Flower Shows adopted by  
Nationally Accredited Judges' Club of South Carolina March 3, 2018**

**Trees:**

Callery Pear, Bradford Pear (*Pyrus calleryana*)  
Chinaberry (*Melia azederach*)  
Chinese Parasol Tree (*Firmiana simplex*)  
Chinese Tallowtree (*Tradica sebifera*)  
Mimosa (*Albizia julibrissin*)  
Paper Mulberry (*Broussonetia papyrifera*)  
Princesstree (*Paulownia tomentosa*)  
Tree of Heaven (*Ailanthus altissima*)  
White Mulberry (*Morus alba*)  
White Poplar (*Populus alba*)

**Vines:**

Bigleaf Periwinkle (*Vinca major*)  
Cherokee Rose (*Rosa laevigata*)  
English Ivy (*Hedera helix*). Container specimens allowed.  
Climbing Fern (*Lygodium japonicum*)  
Chinese Wisteria (*Wisteria sinensis*)  
Chinese Yam (*Dioscorea polystachya*)  
Virginsbower (*Clematis terniflora*)  
Japanese Honeysuckle (*Lonicera japonica*)  
Kudzu (*Pueraria montana*)  
Common Periwinkle (*Vinca minor*)  
Oriental Bittersweet (*Celastrus orbiculatus*)

**Shrubs:**

Autumn Olive (*Elaeagnus umbellata*)  
Chinese Privet (*Ligustrum sinense*)  
Japanese Knotweed (*Polygonum cuspidatum*)  
Japanese Privet (*Ligustrum japonicum*)  
Multiflora Rose (*Rosa multiflora*)  
Nandina (*Nandina domestica*)  
Scotch Broom (*Cytisus scoparius*)  
Shrub Lespedeza (*Lespedeza bicolor*)  
Thorny-olive (*Elaeagnus pungens*)  
Trifoliolate Orange (*Poncirus trifoliata*)

**Herbs:**

Bull Thistle (*Cirsium vulgare*)  
Nodding Thistle (*Carduus nutans*)  
Queen Anne's Lace (*Daucus carota*)  
Rattle Box (*Sesbania punicea*)  
Sericea (*Lespedeza cuneata*)  
Showy Rattlebox (*Crotalaria spectabilis*)  
Wart Removing Herb (*Murdannia keisak*)  
Tropical Soda Apple (*Solanum viarum*)

**Grasses:**

Bahiagrass (*Paspalum notatum*)  
Dallisgrass (*Paspalum dilatatum*)  
Chinese Silvergrass (*Miscanthus sinensis*)  
Cogongrass (*Imperata cylindrica*)

**Grasses:**

Giant Reed (*Arundo donax*)  
Golden Bamboo (*Phyllostachys aurea*)  
Itchgrass (*Rottboellia cochinchinensis*)  
Japanese Stiltgrass (*Microstegium vimineum*)  
Johnsongrass (*Sorghum halepense*)  
Phragmites (*Phragmites australis*)  
Tall Fescue (*Festuca arundinacea*)  
Torpedograss (*Panicum repens*)  
Vaseygrass (*Paspalum urvillei*)  
Weeping Lovegrass (*Eragrostis curvula*)

**Aquatic:**

Crested Floating Heart (*Nymphoides cristata*)

# Horticulture Entry Card Example

National Garden Clubs, Inc.

1. "How Does Your Garden Grow" 2. [Show Date]

FLOWER SHOW			DATE
DIVISION	SECTION	CLASS No.	ENTRY No.
3. [I]	4. [L]	5. [118]	6. [Your #]

7. Osmanthus fragrans

VARIETY OR CLASS NAME

8. 'Orange Supreme'

9. [Orange Tea Olive]

EXHIBITOR 10. [Your full name]

ADDRESS [Your address - not required]

CLUB [Your Garden Club, Society or School]

EXHIBITOR [Your full name]

ADDRESS [Your Address - required]

CLUB [Your Garden Club, Society or School]

DIVISION	SECTION	CLASS No.	ENTRY No.
3. [I]	4. [L]	5. [118]	6. [Your #]

7. Osmanthus fragrans

VARIETY OR CLASS NAME

8. 'Orange Supreme'

9. [Orange Tea Olive]

## How to complete your entry card (HB p 57)

1. Name of the flower show
2. Date of entry
3. Division:
  - I Horticulture
  - II Design
  - III Educational
  - IV Youth
  - V Botanical Arts
4. Section - as indicated in this schedule
5. Class No - as indicated in this schedule
6. Entry No. - You will be assigned a registration #
7. Botanical Name - Genus and species (underlined)
8. Variety - in single "
9. Common name - inside ( )
10. Exhibitor Information: Please include your name, address, and club name so that we can return the entry cards to you after the show.

PLEASE FILL OUT THIS CARD IN PENCIL AND ATTACH IT TO YOUR BOTTLE OR PLANT STAKE.



## **DIVISION I. HORTICULTURE**

**“...WITH SILVER BELLS AND COCKLE SHELLS.”**

Eligible for the Award of Horticultural Excellence

### **Section A: Combination Plantings “Pat-a-cake”**

Eligible for Grower’s Choice Award

Please give genus & species and cultivar or variety if known. A grouping of three (3) or more botanically different plants with similar cultural requirements such as light, water and humidity. The maximum size of a round container is no more than fourteen (14) inches in diameter. Square or rectangular containers no more than fourteen (14) inches in length and/or width. No accessories are allowed.

- Class 1. Container with *Cacti*
- Class 2. Container with house plants
- Class 3. Container with one or more ferns
- Class 4. Container with succulents (that are not *Cacti*)

### **Section B: Container Grown Flowering Plants “Twinkle, Twinkle, Little Star”**

Eligible for the Grower’s Choice Award

Where only the genus name is given, please give species and cultivar or variety if known. The maximum size of a round container is no more than fourteen (14) inches in diameter. Square or rectangular containers no more than fourteen (14) inches in length and/or width. The specimens may be double-potted. Unobtrusive soil surface coverings such as sand, pea gravel, etc. may be used in container grown specimens.

- Class 5. *Begonia*
  - a. *Begonia* - Angel Wing type
  - b. *Begonia* - Rex type
  - c. *Begonia* - Polka dot type
  - d. *Begonia* - Wax type
- Class 6. *Catharanthus roseus* (Periwinkle or Vinca)
- Class 7. *Kalanchoe*
- Class 8. *Pelargonium* × *hortorum* (common garden geranium)

- Class 9. Potted Orchid (give genus & species and cultivar)
- Class 10. *Spathiphyllum wallisii* (Peace Lily)
- Class 11. *Streptocarpus ionantha* (African Violet) previously named *Saintpaulia*
- Class 12. Any other worthy flowering container grown plants not listed above

### **Section C: Container Grown Foliage Plants “Itsy, Bitsy Spider”**

Eligible for the Grower’s Choice Award

Where only the genus name is given, please give species and cultivar or variety if known. Foliage specimens may have flowers present, but flowers must be insignificant. Round container size must be less than fourteen (14) inches. Square or rectangular containers no more than fourteen (14) inches in length and/or width. The specimens may be double-potted. Unobtrusive soil surface coverings such as sand, pea gravel, etc. may be used in container grown specimens.

- Class 13. *Adiantum* (Maidenhair fern)
- Class 14. *Asparagus* (ornamental, not true fern)
  - a. *Asparagus densiflorus* ‘Meyersii’ (Foxtail fern)
  - b. *Asparagus densiflorus* ‘Sprengeri’ (Sprengeri fern)
  - c. *Asparagus plumosus* (Lace Fern)
- Class 15. *Asplenium platyneuron* (Ebony Spleenwort)
- Class 16. *Cyrtomium falcatum* (Holly fern)
- Class 17. *Dracaena trifasciata* (Snake plant or Mother-in-law’s tongue)
- Class 18. *Dryopteris erythrosora* (Autumn fern or Japanese shield fern)
- Class 19. *Hypsoestes phyllostachya* (Polka Dot Plant)
- Class 20. *Osmunda cinnamomea* (Cinnamon fern)
- Class 21. *Philodendron*
- Class 22. *Platycerium bifurcatum* (Staghorn fern)
- Class 23. *Plectranthus scutellarioides* (Coleus)
- Class 24. *Plectranthus verticillatus* (Swedish ivy)
- Class 25. *Pteris cretica* (Silver Ribbon fern or Brake fern)
- Class 26. *Rumohra adiantiformis* (Leatherleaf or Baker’s fern)
- Class 27. *Syngonium podophyllum* (Arrowhead plant)
- Class 28. Any other worthy foliage container grown plants not listed above
  - a. Single specimen not listed above
  - b. Multiplanting of a single cultivar not listed above

### **Section D. Large Cut Foliage “Hey Diddle Diddle”**

Eligible for the Award of Merit

Where only the genus name is given, please give species and cultivar or variety if known. Only one (1) frond, leaf, or stem is required, no trees or shrubs. Length must be a minimum of forty-two (42) inches and a maximum of eight (8) feet or ninety-six (96) inches from apical tip to cut end. Where only the common name is



given, please give genus/species and cultivar or variety if known. Specimens require large containers with a broad base and weighted with pebbles, to prevent tipping over (provided by the committee). Green Styrofoam may be used for wedging if furnished by the exhibitor.

#### FROND

- Class 29. Palm (give genus & species)
- Class 30. *Thelypteris kunthii* (Southern Shield Fern)
- Class 31. Any other worthy frond not listed above

#### LEAF

- Class 32. *Alocasia* (Elephant Ear)
- Class 33. *Colocasia esculenta* (Taro)
- Class 34. *Monstera deliciosa* (Swiss cheese plant)
- Class 35. *Musa* (Banana)
- Class 36. *Philodendron selloum* (Split-leaf philodendron)
- Class 37. Any other worthy leaf not listed above

#### STEM

- Class 38. *Cyperus*
  - a. *Cyperus involucratus* (Umbrella plant)
  - b. *Cyperus papyrus* (Paper plant)
- Class 39. Any other worthy stem not listed above

### **Section E: Blooming Cut Herbaceous Plants – Annuals “A tisket, a tasket”**

Eligible for the Award of Merit

Where only the genus name is given, please give species and cultivar or variety if known. Cut plant material should be displayed with one (1) stem and a minimum of two (2) leaves. Sprays should be displayed with a minimum of three (3) blooming stems with two (2) leaves on each stem. Length must not exceed thirty (30) inches from apical tip to cut end.

- Class 40. *Calibrachoa* Million Bells® (give color)
- Class 41. *Celosia*
- Class 42. *Cosmos*
- Class 43. *Pentas*
- Class 44. *Tagetes* (Marigolds)
- Class 45. *Zinnia*
- Class 46. Any other worthy flowering annual not listed above
  - a. Single bloom
  - b. Spray

### **Section F: Blooming Cut Herbaceous Plants – Perennials “Knick Knack Paddy Wack”**

Eligible for the Award of Merit

Where only the genus name is given, please give species and cultivar or variety if known. Cut plant material should be displayed with one (1) stem and a minimum of two (2) leaves. Sprays should be displayed with a minimum of three (3) blooming stems with two (2) leaves on each stem. Length must not exceed thirty (30) inches from apical tip to cut end. Minimum length determined by the size of the plant, but three (3) or more nodes are required.

- Class 47. *Asclepias* (Milkweed or Butterfly weed)
- Class 48. *Brugmansia* (Angel Trumpet)
- Class 49. *Coreopsis*
- Class 50. *Echinacea* (Coneflower)
- Class 51. *Gaillardia* (Blanket flower)
- Class 52. *Hedychium coronarium* (White Ginger Lily, Butterfly Ginger)
- Class 53. *Justicia brandegeana* (Shrimp plant)
- Class 54. *Leucanthemum* × *superbum* (Shasta Daisy)
- Class 55. *Rosa* – minimum of 2 sets of leaves
  - a. Floribunda (single or spray to be subdivided)
  - b. Hybrid Tea/Grandiflora (single or spray to be subdivided)
  - c. Shrub roses (single or spray to be subdivided)
  - d. Any other worthy Rose stem not listed (single or spray to be subdivided)
- Class 56. *Salvia*
  - a. *Salvia coccinea* Nymph Series™ (give color)
  - b. *Salvia coccinea* Summer Jewel Series™ (give color)
  - c. *Salvia elegans* (Pineapple Sage)
  - d. *Salvia guaranitica* (Black and Blue)
  - e. *Salvia leucantha* (Mexican Bush Sage)
  - f. *Salvia madrensis* (Forsythia Sage)
  - g. Any other worthy *Salvia* not listed above (single or spray)
- Class 57. *Zingiber zerumbet* (Pine Cone Ginger)
- Class 58. Any other worthy blooming perennial not listed above

### **Section G: Flowering Vines “Hickory Dickory Dock”**

Eligible for the Award of Merit

Where only the genus name is given, please give species and cultivar or variety if known. Length must not exceed thirty (30) inches from apical tip to cut end.

- Class 59. *Clematis*
- Class 60. *Lonicera sempervirens* (Coral honeysuckle)

Class 61. *Mandevilla*

Class 62. *Passiflora* (Passion-flower)

Class 63. *Trachelospermum jasminoides* (Star jasmine or Confederate jasmine)

Class 64. Any other worthy flowering vine not listed above

## **Section H: Culinary Herbs “I’m a Little Teapot”**

Eligible for the Award of Merit

Where only genus name is given, please give species and cultivar or variety if known. Length must not exceed twenty-four (24) inches from apical tip to cut end. All specimens must be exhibited at the peak of perfection for best taste and quality; table ready for consumption.

Class 65. *Laurus nobilis* (Bay)

Class 66. *Mentha* (Mint)

Class 67. *Ocimum basilicum* (Basil)

Class 68. *Origanum*

a. *Origanum majorana* (Sweet Marjoram)

b. *Origanum vulgare* (Oregano)

Class 69. *Petroselinum* (Parsley)

a. *Petroselinum crispum* (Curly)

b. *Petroselinum crispum var. neapolitanum* (Flat leaf or Italian)

Class 70. *Salvia rosmarinus* (Rosemary)

Class 71. *Salvia officinalis* (Sage)

Class 72. *Thymus vulagris* (Thyme)

Class 73. Any other worthy culinary herb specimen not listed above

## **Section I. Decorative Cut Foliage – Frond or Leaf “Old MacDonald”**

Eligible for the Award of Merit

Where only the genus name is given, please give species and cultivar or variety if known. Only one (1) frond or leaf required. Length must not exceed 36” from apical tip to cut end.

### FROND

Class 74. *Adiantum* (Maidenhair fern)

Class 75. *Asparagus* (ornamental, not true fern)

a. *Asparagus densiflorus* ‘Meyersii’ (Foxtail fern)

b. *Asparagus densiflorus* ‘Sprengeri’ (Sprengeri fern)

c. *Asparagus plumosus* (Lace Fern)

- Class 76. *Asplenium platyneuron* (Ebony Spleenwort)
- Class 77. *Cyrtomium falcatum* (Holly fern)
- Class 78. *Dryopteris erythrosora* (Autumn fern or Japanese shield fern)
- Class 79. *Osmunda cinnamomea* (Cinnamon fern)
- Class 80. *Pteris cretica* (Silver Ribbon fern or Brake fern)
- Class 81. *Rumohra adiantiformis* (Leatherleaf or Baker's fern)
- Class 82. Any other worthy cut frond not listed above

#### LEAF

- Class 83. *Artemisia* (Wormwood or Mugwort)
- Class 84. *Aspidistra elatior* (Cast Iron plant)
  - a. solid green
  - b. variegated
- Class 85. *Caladium bicolor* {give cultivar}
- Class 86. *Canna*
  - a. Solid
  - b. Variegated
- Class 87. *Codiaeum variegatum* (Croton)
- Class 88. *Farfugium* (Tractor Seat Plant)
- Class 89. *Fatsia japonica* (Japanese Aralia)
  - a. Solid green
  - b. Variegated
- Class 90. *Tradescantia pallida* 'Purpurea' (Purple Heart)
- Class 91. *Stachys byzantina* (Lamb's Ear)
- Class 92. *Strobilanthes dyerianus* (Persian Shield)
- Class 93. Any other worthy leaf not listed above.

### **Section J: Decorative Cut Foliage – Plume and Stem “Mary had a Little Lamb”**

Eligible for the Award of Merit

Where only the genus name is given, please give species and cultivar or variety if known. Only one (1) plume or stem required. Length must not exceed 36” from cut end to apical tip.

#### PLUME

- Class 94. *Chasmanthium latifolia* (Northern River Oats)
- Class 95. *Cortaderia selloana* (Pampas Grass)
- Class 96. *Miscanthus sinensis* (Maiden Grass)
- Class 97. *Muhlenbergia capillaris* (Pink Muhly Grass)
- Class 98. Any other worthy plume not listed above.

#### STEM

- Class 99. *Cyperus*
  - a. *Cyperus involucratus* (Umbrella plant)
  - b. *Cyperus papyrus*

- Class 100. *Equisetum hyemale* (Horsetail Rush)
- Class 101. *Juncus effusus* (Common Rush)
- Class 102. *Pedilanthus tithymaloides* (Zig-Zag plant)
- Class 103. *Tradescantia pallida* 'Purpurea' (Purple Heart)
- Class 104. Any other worthy cut stem not listed above.

## **Section K: Dwarf Shrubs “Little Miss Muffet”**

Eligible for the Elfin Award

Please list the genus & species and include DWARF or miniature cultivar name. Length must not exceed eighteen (18) inches from apical tip to cut end. Minimum length determined by overall shrub size but several nodes required.

### NOT FLOWERING

- Class 105. *Berberis thunbergii* (Dwarf Barberry)
- Class 106. *Juniperus communis* 'Compressa' (Pencil Point Juniper)
- Class 107. *Mahonia confusa* 'Narihira' (Dwarf Mahonia)
- Class 108. *Pittosporum tobira*
- Class 109. *Serissa japonica*
- Class 110. Any other worthy dwarf not flowering shrub not listed above.

### FLOWERING

- Class 111. *Callistemon viminalis* (Dwarf Bottlebrush)
- Class 112. *Rhododendron* (Dwarf Azalea)
- Class 113. Any other worthy dwarf shrub not listed above.

## **Section L: Blooming Woody Perennials “Rain, Rain Go Away”**

Eligible for the Arboreal Award

Where only the genus name is given, please give species and cultivar or variety if known. Cut branch length must not exceed 30” in length from apical tip to cut end. Minimum length determined by overall plant size. Several nodes and a minimum of two sets of leaves are required.

- Class 114. *Callistemon* (Bottlebrush)
- Class 115. *Camellia sasanqua*
- Class 116. *Hydrangea quercifolia* (Oak-leaved)
  - a. Solid green
  - b. Variegated
- Class 117. *Lantana*
- Class 118. *Osmanthus fragrans* (Tea Olive)
- Class 119. *Melaleuca* (Bottlebrush)
- Class 120. *Rhododendron* (Azalea)
- Class 121. *Rosa* (give miniature cultivar name)
  - a. Floribunda (single or spray)
  - b. Hybrid Tea/Grandiflora (single or spray)
  - c. Shrub roses (single or spray)

- d. Any other worthy rose stem not listed (single or spray)  
Class 122. Any other worthy woody, flowering perennial not listed above.

### **Section M: Evergreen Shrubs “One, Two, Buckle My Shoe”**

Eligible for the Arboreal Award

Where only the genus name is given, please give species and cultivar or variety if known. Cut branch must be a minimum of 18” and not exceed 30” in length from apical tip to cut end, include several nodes and central leader. Rhododendron are the exception, see below for exception.

- Class 123. *Aucuba japonica*  
Class 124. *Buxus sempervirens* (Boxwood)  
Class 125. *Ilex* (Holly) no berries  
Class 126. *Juniperus*  
Class 127. *Loropetalum*  
Class 128. *Pittosporum tobira*  
Class 129. *Podocarpus* (Yew)  
Class 130. Any other worthy evergreen shrub not listed above.

### **Section N: Trees “Jack Be Nimble”**

Eligible for the Arboreal Award

Where only the genus name is given, please give species and cultivar or variety if known. Length not to exceed 30” from apical tip to cut end, include several nodes and the central leader.

- Class 131. *Ciprocyparis leylandii* (Leyland cypress)  
Class 132. *Cryptomeria japonica* (Japanese cedar)  
Class 133. *Eriobotrya japonica* (Loquat)  
Class 134. *Eucalyptus*  
Class 135. *Juniperus virginiana* (Eastern Red Cedar)  
Class 136. *Magnolia*  
a. *Magnolia grandiflora*  
b. Any other worthy *Magnolia*  
  
Class 137. Any other worthy tree not listed above.

### **Section O: Cut Pink Specimens to Honor Breast Cancer Survivors**

**“Row, Row, Row Your Boat”** Eligible for the Award of Merit

Please give genus & species and cultivar or variety if known. Cut specimens not to exceed 30” in length. Sprays should be displayed with a minimum of 3 blooming stems with 2 leaves per stem.

- Class 138. Cut Pink Annual Blooms  
Class 139. Cut Pink Perennial Blooms  
Class 140. Cut Pink Roses  
Class 141. Cut Decorative Foliage (with some pink)

**Section P: Collections – Cut Specimens, Blooming or Foliage “The Wheels on the Bus”**  
Eligible for the Collector’s Showcase Award

A minimum of **five different** related specimens (such as one family, one genus or of similar characteristics – bromeliads, ferns, orchids, shade foliage, etc.) of cut fresh plant material. Allotted space per exhibitor is 22” square on a table. Cut specimens may not exceed 30” in length apical tip to cut end, and are staged in compatible containers of transparent glass/plastic, furnished by the exhibitor. Exhibitors may use staging accessories such as blocks, mats, risers, etc., but must not detract from the specimens the plant material must dominate. Placement of specimens are the responsibility of the exhibitor. Each specimen must be correctly labeled with current scientific name and in a manner to easily identify the specimen’s location in the collection. Entry card must explain relationship between the exhibits. Exhibitor must check with the Horticulture Chairperson or Horticulture Classification Chairperson before leaving the area. Use a 3” x 5” card/s to list all plants in the collection. **Judged by the Horticulture Scale of Points**

- Class 142. Cut Blooming Specimens
- Class 143. Cut Evergreen Foliage Specimens
- Class 144. Cut Herbaceous Foliage Specimens

**Section Q: Fruits, Nuts, Vegetables “Humpty Dumpty Sat on a Wall”**  
Eligible for the Award of Merit

Where only the genus name is given, please give species and cultivar or variety if known. The NGC rules for homegrown produce can be found in the HB pp 34, 59. All specimens must be exhibited at the right stage of maturity for best taste and quality; table ready for consumption. Gently clean all produce. No waxing or oiling permitted, leave natural ‘bloom’ on fruit and stems must be present. To be staged on 7” or 9” plates furnished by the Committee unless large. Mushrooms are not judged in this flower show. Banana flowers are exhibited in Section F. In botany, a **fruit** is the seed-bearing structure in flowering plants that is formed from the ovary after flowering.

FRUITS

- Class 145. *Abelmoschus esculentus* (okra) 5 on a plate, stem intact
- Class 146. *Capsicum* +(pepper) 1 on a plate, stem cut to ½”
  - a. *Capsicum annuum* (hot pepper) 12 on a plate
  - b. *Capsicum annuum* (sweet pepper) 3 on a plate
- Class 147. *Citrullus lanatus* (watermelon) 1
- Class 148. Citrus – 1 to 3 on a plate depending on size of fruit (give scientific name)
- Class 149. *Cucumis melo* (cantaloupe) 1
- Class 150. *Cucumis sativas* (cucumber) 1 on a plate
- Class 151. *Cucurbita*
  - a. *Cucurbita pepo* (gourd) 1
  - b. *Cucurbita pepo* (pumpkin) 1
  - c. *Cucurbita pepo* (squash) 3 on a plate
- Class 152. *Ficus carica* (fig) 3 on a plate
- Class 153. *Phaseolus vulgaris* (green bean) 12 on a plate
- Class 154. *Punica granatum* (pomegranate) 1 on a plate
- Class 155. *Solanum lycopersicum* (slicing tomato) 3 on a plate
- Class 156. *Solanum lycopersicum* (cherry tomato) 12 on a plate
- Class 157. *Solanum lycopersicum* (Roma tomato) 5 on a plate

Class 158. *Solanum melongena* (eggplant) 1 on a plate

Class 159. *Vitis* - Grapes

a. *Vitis rotundifolia* (muscadine) minimum of 1 cluster (minimum of 12).

b. Any other worthy grape not listed above, a minimum of 1 cluster (minimum of 12).

Class 160. Any other worthy fruit not listed above with the quantity necessary to be displayed on a plate or the table attractively.

## NUTS

Class 161. Nuts – minimum of 12 of the same variety on a plate, in shells. List scientific and common name.

## ROOT VEGETABLES

Class 162. *Allium cepa* (mature onion) 3 on a plate, outside skin, top and roots intact

Class 163. *Allium fistulosum* (green onion) 6 on a plate, tops cut to 8”, top and roots intact

Class 164. *Ipomoea batatas* (sweet potato) 2 on a plate, outside skin, top and roots intact

Class 165. *Raphanus sativus* (radish) 5 on a plate, roots and leaves intact

Class 166. Any other worthy type of root vegetable with roots and leaves intact, quantity necessary to be displayed on a plate attractively



## **DIVISION II. DESIGN**

**“... WITH FLOWERS EVERYWHERE.”**

**Eligible for the Award of Design Excellence**

## **RULES**

1. **All design exhibits must be pre-registered** with the Design Entries Chairman before September 23, 2022. Please see page 2 of this schedule for contact information or use our Sign-Up Genius webpage: <https://www.signupgenius.com/go/5080f4aada923a4f58-thecoastal>
2. The NGC Exhibit Policies are printed in the HB pp 79-81, Exhibiting in the Design Division.
3. Some plant material fresh and/or dried must be used in every exhibit.
4. Plant material and non-plant material permitted and not permitted in the Design Division is listed in the HB pp 80-81. Fresh plant material may not ever be treated in any manner. Dried plant material may be treated.
5. All plant material used in the design must be identified on a 3” x 5” card, provided by the show committee and included with the entry card.
6. The exhibitor is required to conform to the stated description and limitations of the Design Type if named in the class.



7. Rules for Design Types, Advanced Design Types, Table Designs and Table Appointments are printed in the HB pp 73-78.
8. Exhibitor may enter multiple Classes within the Design Division, but only one (1) exhibit per Class.
9. The exhibit entered in to competition must be the work of only one (1) exhibitor and that exhibitor's name must appear on the entry card/tag with the following exception, Companion Design Class which will have two (2) names.
10. **If a designer is unable to provide the design for which she/he pre-registered, it is the designer's responsibility to provide a substitute and contact the Design Division Chairman see page 2 of this schedule for contact information. This is an NGC rule.**
11. If the designer is unavailable to transport and/or set up his/her completed design, a substitute person may enter the exhibit for the designer. The designer may receive exhibiting credit if needed. This is permitted only for completed designs.
12. A single flower is not a design. Container-grown plants are fresh plant material and are permitted in the Design Division where appropriate, but they are never considered floral designs.
13. Landscapes, scenes, or anything representing an actual item of clothing, person, animal, etc., are not considered acceptable in the Design Division. (Note: Refer to the Botanical Arts Division for exhibiting these items.)
14. Religious symbols used in a design must be displayed in a respectful manner.
15. Plant material need not have been grown by Designer.
16. The Scale of Points for all Designs is printed below. HB 130

### **DESIGN SCALE OF POINTS**

Conformance (to Type)	7
Conformance (to Schedule requirements)	7
Design Principles	48
Selection of components	8
Organization of components	8
Expression	8
Distinction	<u>14</u>
<b>Total Score</b>	<b>100</b>



## **DIVISION II. DESIGN**

**“...WITH FLOWERS EVERYWHERE.”**

Eligible for the Award of Design Excellence

**All designs need to be pre-registered with the Design Entries Chairman, see page 2 of this schedule for contact information. Please pre-register before September 23, 2022. Please use our Sign-up Genius website to register: <https://www.signupgenius.com/go/5080f4aada923a4f58-thecoastal>**

### **Section A: Standard Size Creative Designs**

**“Wild About Flowers”**

Eligible for Designer’s Choice Award

Designs in this section will be CREATIVE DESIGNS. These designs are not bound by traditional patterns or styles. HB pp 71-79 These designs have a relationship between form and space. Designer has complete freedom to choose plant material, fresh and/or dried, and other components. Creative Designs show restraint in the amount of plant material and/or number of components used. Staged on black pedestals 39”h with 20” square tops, set in front of a textured, cream fabric wall. The design may extend beyond the 20” square top of the pedestal by 2” on all sides. Design space is 24” w x 24” d, height not to exceed 48.” Viewed from 3 sides but judged from the front.

#### **Class 1. “Happy Happy Happy” 4 Entries**

Designer has complete freedom to choose a creative design style and components.

#### **Class 2. “It’s a bright and sunny day” 4 Entries**

A Creative Mass Design emphasizing a greater proportion of plant material and components than space. The silhouette of the design is visually closed and rhythm contained within. Open spaces may be incorporated within the closed silhouette.

#### **Class 3. “Jumping for joy” 4 Entries**

A Parallel Design consisting three (3) or more groupings of plant material and optional components with strong parallel placement. A single container and/or base, or multiple containers and/or bases may be used if combined to appear as one unit. Parallel direction may be vertical, horizontal, or diagonal within the allotted space. The overall effect must appear parallel. Groupings need not be equidistant from each other.

### **Section B: Petite Creative Designs**

**“La Petite Fleur”**

Eligible for the Petite Award

Designs in this section will be CREATIVE DESIGNS. These designs are not bound by traditional patterns or styles. HB pp 71-79 These designs have a relationship between form and space. Designer has complete freedom to choose plant material, fresh and/or dried, and other components. Creative Designs show restraint in the amount of plant material and/or number of components used. Please note specific dimensions listed. Designs will be staged on black fabric covered box, 14 1/2” w x 13” h x 13” d, sitting on top of a table covered with a floor length black tablecloth, all staging will be provided by the show committee. Staging panel and underlay

are encouraged, to be provided by the exhibitor. All designs will be viewed from 3 sides but judged from the front.

**Class 4. “Follow the path”** 4 Entries

A Creative Line Design where line is dominant with a minimum amount of plant material and other components. Line may be straight, curved, or a combination. There may be more than one point of emergence and focal areas. The design should not exceed 8” w x 8” h x 8” d. Staging panels up to 10” w x up to 10” h provided by the Designer are suggested but not required.

**Class 5. “Time to shine”** 4 Entries

A Creative Reflective Design containing reflective materials giving back images of light to the viewer. The reflective materials are an integral part of the overall design. Staging in front of or on a mirror is not acceptable. The design should not exceed 8” w x 8” h x 8” d. Staging panels up to 10” w x up to 10” h provided by the Designer are suggested but not required.

**Class 6. “How many degrees”** 4 Entries

A Creative Angular Design emphasizing strong angles that may be acute, obtuse, reflex, right angles or a combination of angles. The design should not exceed 12” w x 12” h x 12” d. Staging panels up to 14” w x up to 14” h and underlay up to 14 1/2” w x 13” d. provided by the Designer are suggested but not required.

## **Section C: Table Designs**

### **“Nothing but Flowers”**

Eligible for the Table Artistry Award

Designs in this section will be TABLE DESIGNS. HB pp 76-77 Table appointments include dishes, beverage service, flatware (expensive flatware is not permitted), coverings (tablecloth, placemats, runners), napkins, decorative unit (completed floral design appropriate for the theme of the class). The decorative unit should not interfere with viewing or conversation across the table. No candles allowed.

**Class 7. – “I heard it through the grapevine”** 4 Entries

Functional Tray for one where the decorative unit may be a traditional or creative design. It should be in scale to the one place setting. The decorative unit should be created in such a way as to be stable on the tray. Staged on a black tray 18” w x 12” d with a one-inch lip will be furnished by the show committee. Two trays will be staged on an 8” table, covered with a floor length black tablecloth. The trays will be available by appointment from the Design Chairman see committee list on page 2 of this schedule for contact information.

**Class 8. “Octopus’ Garden”** 4 Entries

Informal Table Design for two where the decorative unit may be traditional or creative. There must be an impression of order and convenience, the feeling that you could actually sit down at the table and eat comfortably from it as well as essential impression of harmony and unity. The chosen components must be proportional to the decorative unit and to each other. The table should be casual with the chosen appointments having less formal textures and colors. Staged on round tables 30” w x 30” h covered with a 90” black, round table cloth supplied by the show committee. Overlays are encouraged. Viewed from all sides but judged from the front.

**Class 9. “Flowers on the wall”** 4 Entries

Exhibition Table Design where the components are not meant to be functional. Created artistically to suggest the service of food with no requirements as to the type or number of table appointments. Plant material must be used as needed for the overall design. Two designs will be staged side by side on an 8’ table covered with a black floor length table cloth supplied by the show committee. Design space is 34” w x 30” d x 48” h. Designers must supply an underlay and a staging panel.

**Section D: Companion/Novice**

**“Hey, Hey Don’t Throw It Away”**

Eligible for the Companion Award, but not a Top Exhibitor Award

**Class 10. “Trash to Treasure”** 4 Entries

Competitors in this class must include one novice designer, having never won a blue ribbon in a standard flower show and an experienced designer. HB p 79

Designers must create an Assemblage Design which is a three-dimensional abstract design, consisting of “found” and unrelated objects and plant material. Designers have complete freedom to choose plant material and other components. Viewed from three sides but judged from the front. “Found” objects are non-art objects, not made or manufactured for decorative purposes. Staged on a black pedestal 39”h with a 20” square top in front of a cream, textured fabric wall. Design may extend beyond the top 2” on any or all sides. Design space is 24” w x 24” d, height not to exceed 48”.



**DIVISION III. EDUCATION**

**“...WITH MARINE LIFE ALL AROUND.”**

**Eligible for the Educational Top Exhibitor Award**

**RULES**

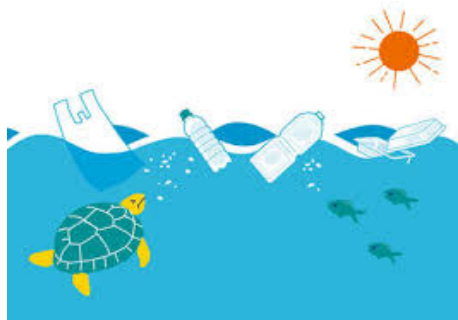
**All exhibits must be pre-registered** with the Education Entries Chairman before September 23, 2022, see page 2 of this schedule for contact information.

1. The rules for the Education Division are printed in the HB pp 29-30.
2. Education Exhibits may be the work of more than one individual or organization unless a Student Judge or an Accredited Judge is seeking exhibiting credit for preparing an education exhibit.
3. Some plant material may be used but is not required. NO artificial plant material is allowed.
4. An exhibit must occupy a minimum of 18 square feet of surface area, using the tabletop and staging panel.
5. Each exhibit will be staged on a table 8’ w x 30” d x 36” h, with floor length black tablecloths (provided by the show committee) placed against a textured, cream wall.

6. Exhibitor may cover the table and/or skirt to the floor. Exhibitor is to provide supports for the free-standing staging panels.
7. Exhibitor will place title on the staging panel and if plant material is used, please list botanical names on the index card provided by the show committee.
8. Educational Exhibits are competitive and will be judged from the front.
9. Scale of Points for Educational Exhibits is below. HB p 130

## EDUCATION EXHIBITS SCALE OF POINTS

<b>Educational Value</b>	
Interest to viewers.	25
Clear, concise presentation	15
Adequate signage	10
Conforms to NGC objectives.	10
<b>Staging</b>	
Craftsmanship / technique	10
Distinction.	10
Creativity and Expression	<u>20</u>
<b>Total Score</b>	<b>100</b>



### DIVISION III. EDUCATION

*“...WITH MARINE LIFE ALL AROUND.”*

Eligible for the Educational Top Exhibitor Award

**All Education entries need to be pre-registered with the Education Entries Chairman before September 23, 2022, please see page 2 of this schedule for contact information.**

#### **Section A: “Effects of plastic pollution ...”**

##### **Exhibit 1. “... on sea birds”**

What types of plastic can harm or even kill birds? How does this effect biodiversity?  
How does this effect migration patterns?

##### **Exhibit 2. “... on sea turtles”**

What types of plastic can harm or even kill turtles? How does this effect biodiversity?  
How does this effect migration patterns?

**Exhibit 3. “... on marine fish”**

What types of plastic can harm or even kill fish? How does this effect biodiversity? How does this effect migration patterns?



**DIVISION IV. YOUTH - DESIGN**  
**“... WITH CHILDREN ALL AROUND.”**  
**Eligible for the Youth Top Exhibitor Award**

**RULES**

**All Youth entries need to be pre-registered** with the Youth Chairman before September 23, 2022, see page 2 of this schedule for contact information.

Construct a sculpture from recycled or reused materials. The sculpture can be no more than 11” wide, 8 ½” deep, and 11” tall.

1. All NGC policies and rules apply.
  - a. Freedom to explore the world of creativity with plant material and design.
  - b. Some plant material must be used but there is no restriction on what can be done to the plant material. It may be fresh and/or dried and may be treated (painted, flocked, dyed, etc.)
2. No artificial, endangered, or locally invasive plant material may be used.
3. A description of the sculpture and materials used needs to be submitted with the entry.
4. The standard Scale of Points for Botanical Arts is used to judge each Youth exhibit.

**DESIGN SCALE OF POINTS**

Conformance (to Type)	7
Conformance (to Schedule requirements)	7
Design Principles	48
Selection of components	8
Organization of components	8
Expression	8
Distinction	<u>14</u>
<b>Total Score</b>	<b>100</b>



## **DIVISION IV. YOUTH - DESIGN**

***"...WITH CHILDREN ALL AROUND."***

**Eligible for the Youth Top Exhibitor Award**

**All Youth entries need to be pre-registered before September 23, 2022 with the Youth Entries Chairman, please see page 2 of this schedule for contact information.**

### **Section A. *"Let's Eat"***

Class 1. *"A Bountiful Breakfast"*

Class 2. *"A Yummy Morning Snack"*

Class 3. *"A Lucious Lunch"*

Class 4. *"A Super Afternoon Snack"*

Class 5. *"A Family Supper"*

Students in Kindergarten

Students in grade 1

Students in grade 2

Students in grade 6

Students in grade 8





**DIVISION V. BOTANICAL ARTS – ARTISTIC CRAFTS**  
**“...WITH A GARDEN WEDDING ON THE WAY.”**  
**Eligible for the Botanical Arts Artistic Crafts Award**

**RULES**

1. **All exhibits must be pre-registered** with the Botanical Arts - Artistic Crafts Entries Chairperson before September 23, 2022, see page 2 of the schedule for contact information. Please use our Sign-Up Genius webpage: <https://www.signupgenius.com/go/5080f4aada923a4f58-thecoastal>
2. The rules for Botanical Arts Artistic Crafts are printed in the HB pp 93-95. Exhibit must contain some fresh and/or dried plant material. Only dried material may be treated.
3. **NO** artificial, endangered or locally invasive plant material may be used see lists on pp 11-12 in this schedule.
4. A plant material used must be listed by botanical name on an index card, provided by the show committee.
5. Plant material may not be carved into figural forms; however, such forms may be assembled from plant material. Clipping, cutting or shaping of material is allowed.
6. Exhibitors may enter only one exhibit per class.
7. The Scale of Points for judging Botanical Arts – Artistic Crafts is listed below. HB p 131

**BOTANICAL ARTS SCALE OF POINTS**

Conformance	14
Design	48
Craftmanship/Technique	24 (12 points for each)
Distinction	<u>14</u>
<b>TOTAL</b>	<b>100</b>





## **Division V: BOTANICAL ARTS – Artistic Crafts**

### **“...WITH A GARDEN WEDDING ON THE WAY”**

Eligible for the Botanical Arts – Artistic Crafts Award

**All Botanical Arts entries need to be pre-registered before September 23, 2022 with the Botanical Arts Entries Chairman, please see page 2 of this schedule for contact information. Please use our Sign-up Genius website: <https://www.signupgenius.com/go/5080f4aada923a4f58-thecoastal>**

Artistic crafts are objects with a function. They may be artistically pleasing, but were not created solely for their artistic value. They serve a purpose and can be labeled as a certain object such as hat, or shoe. All exhibits must be able to be worn.

### **Section A. “Ding Dong the Bells are going to Chime”**

Class 1. “*Something for the Groom*” 4 Entries

A boutonniere for the groom – The entries will be displayed on a black velvet necklace stand provided by the committee, sitting on an 8’ table covered by a black tablecloth and black skirting to the floor.

Class 2. “*Something for the Bridesmaid*” 4 Entries

A flower wreath suitable to be worn on the head of a bridesmaid – Choose flowers that do not wilt easily or dried flowers. Wire wrapped with green floral tape can make a good base for the flowers. Ribbon may be attached to the wreath. The designs will be displayed on short mannequin heads provided by the committee on black pedestals 39”h with 18” square tops. Exhibitor may supply a 24” square piece of fabric to cover the top of the pedestal. To arrange for pick-up of the Styrofoam head, please contact the Botanical Arts Chairman to arrange pick up, see page 2 of this schedule for contact information.

Class 3. “*Something for the Bride*” 4 Entries

One shoe for the bride – Fresh and/or dried plant material must be used to cover a shoe. Keep in mind that the bride will need to wear this shoe, provided by the Exhibitor. Exhibits will be staged on an 8’ table covered with a black tablecloth and black skirting to the floor.