

# CALIFORNIA AGRICULTURE

## FARMING IS EVERYWHERE







# HELLO!

Think about your clothes, paper, shoes, toothpaste, and basketball. Do you ever wonder what these products have in common? They all come from agriculture. California farmers and ranchers produce more than 400 different crops that are made into the things that we use every day.

Today's farmers work very hard. Did you know that one farmer in the United States can produce enough food to feed 155 people?

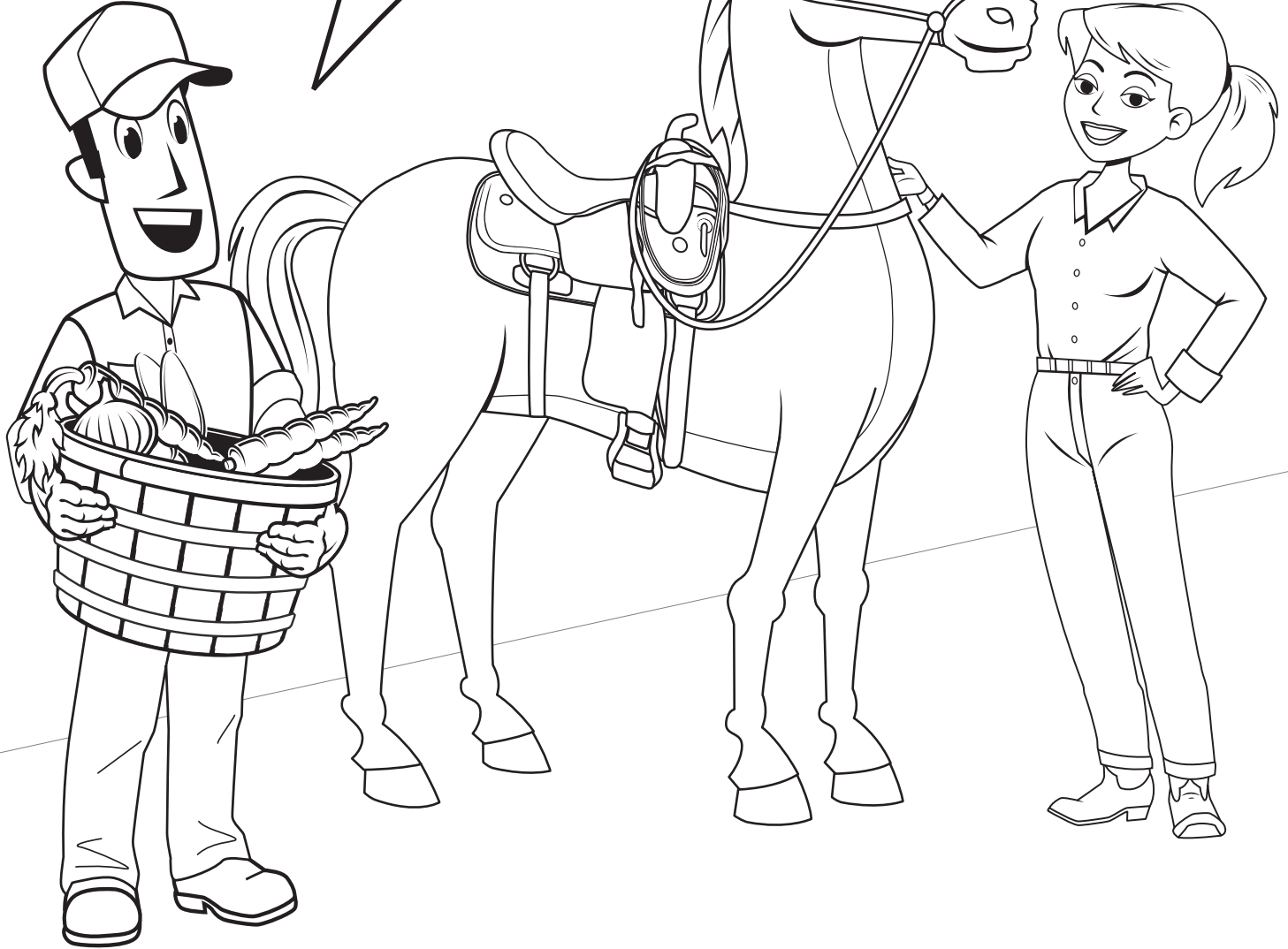
Follow your hosts Farmer Joe and Farmer Maria through this coloring book to learn more about agriculture. Have fun seeing and coloring all that agriculture provides—it is more than you could ever imagine!

To learn more visit:  
[LearnAboutAg.org](http://LearnAboutAg.org)

## California's Top 10 Commodities

Milk, Grapes, Almonds, Strawberries,  
Cattle and Calves, Lettuce, Walnuts,  
Tomatoes, Pistachios, Broilers

Hello there! My name is Farmer Joe, and this is Farmer Maria. Come along as we show you how we all depend on farming. It is all around you!



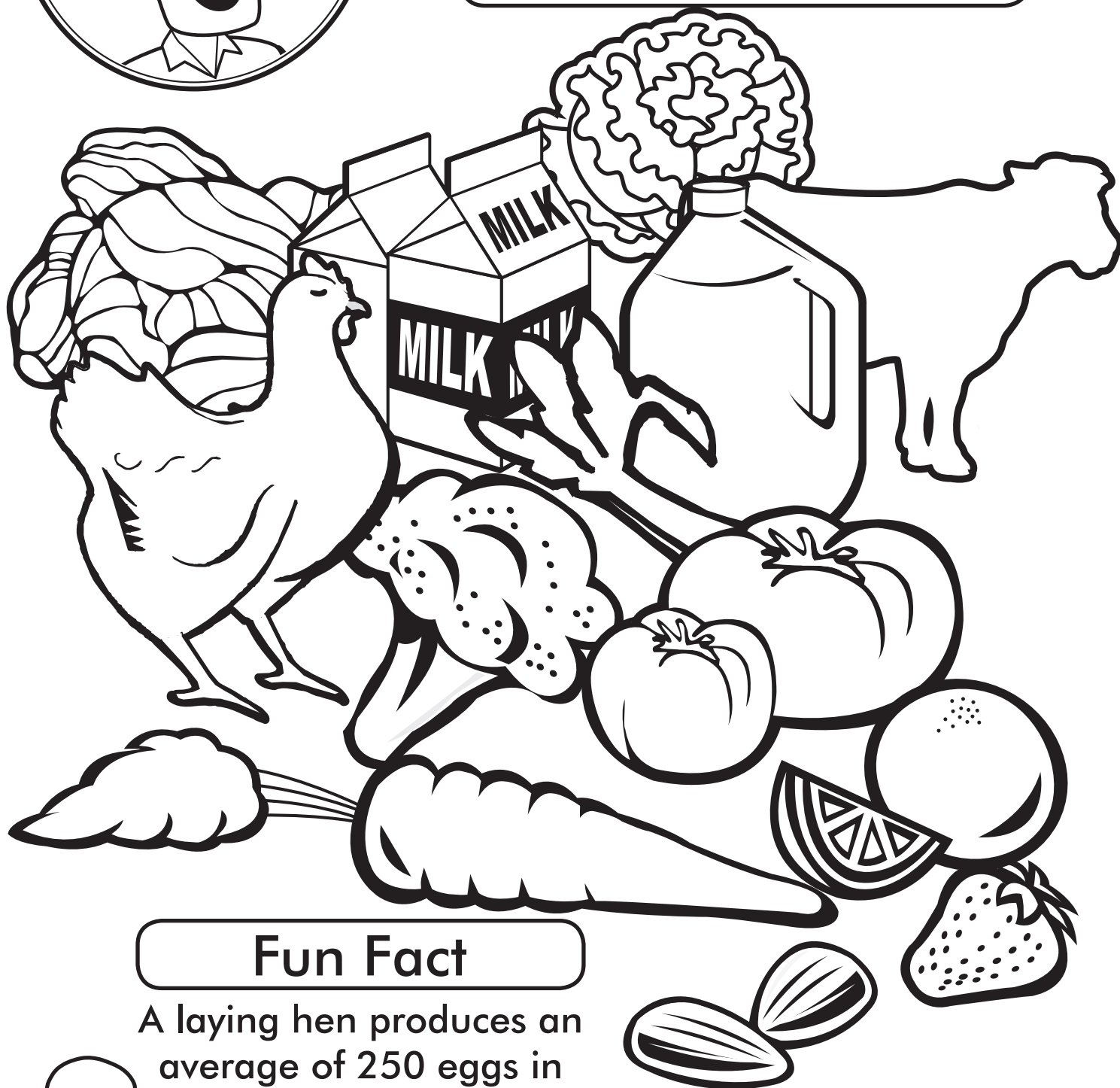
Here is an easy way to remember what agriculture is:  
The Five F's

**FOOD** **FUEL** **FIBER**  
**FORESTS** **FLOWERS**

# FOOD

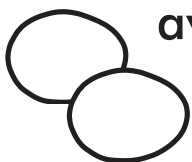


Farmers and ranchers grow many different kinds of FOOD... from the strawberries growing in fields to the hamburger on your dinner plate.



## Fun Fact

A laying hen produces an average of 250 eggs in one year.





# FIBER

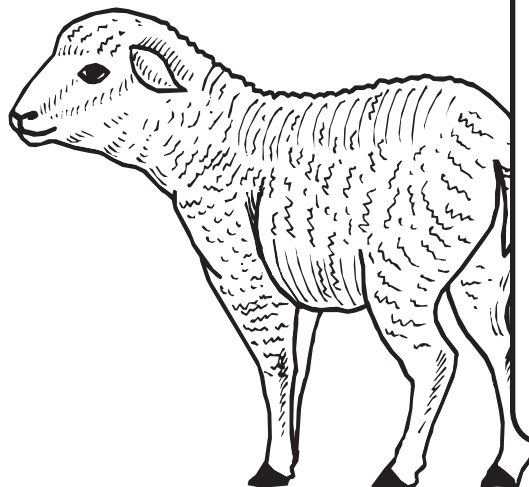
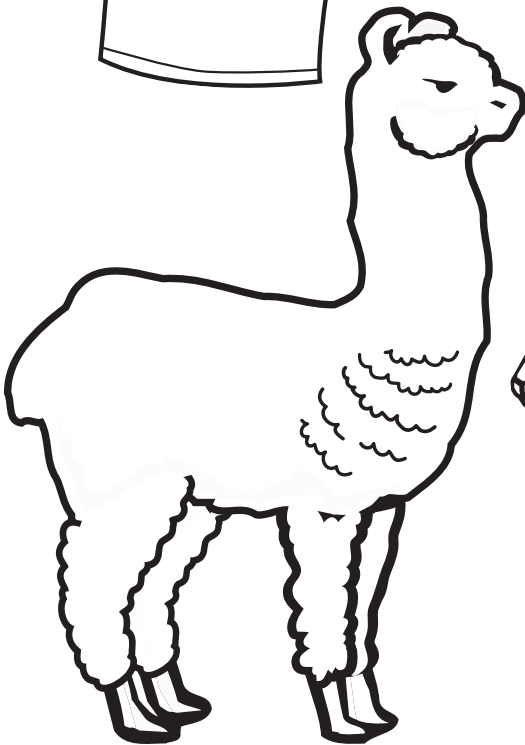
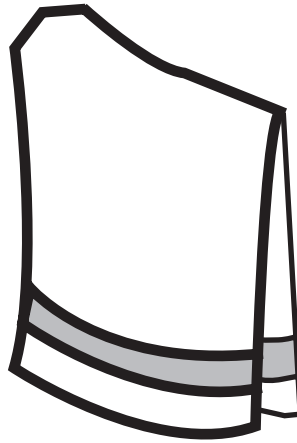
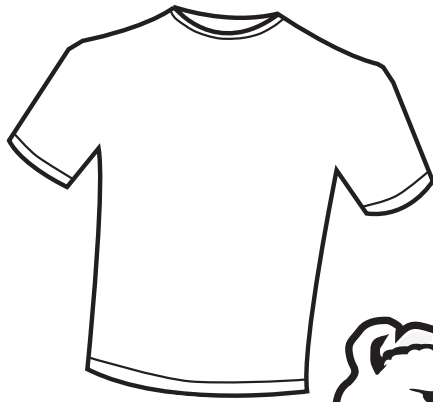
Cotton from plants and wool from animals are types of textile fiber. Many products that we use every day are made from FIBER.



Cotton plants are used to make clothing such as jeans and household items such as towels.

Another plant that is used to produce fiber is flax which is used to make linen.

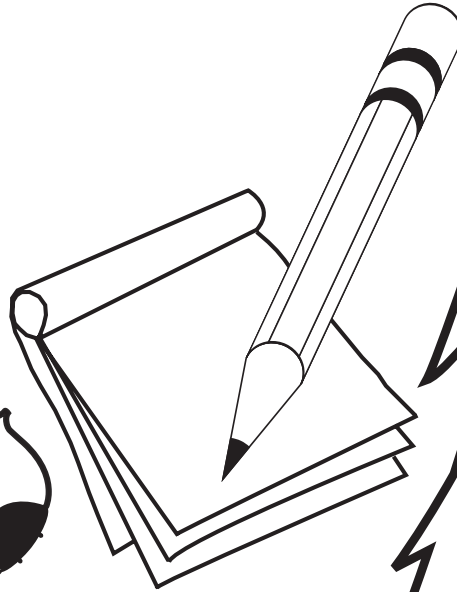
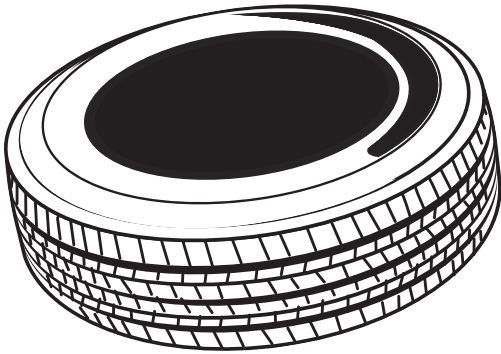
Some animal fur can be used to make textiles for the production of clothes and other household items. Animals that produce fiber include sheep, alpacas, llamas, and some goats.



# FORESTS



Trees from FORESTS are used to make more than 5,000 products that we use everyday.



Trees are used to make:

- Paper
- Pencils
- Wood
- Cardboard boxes
- Maple syrup
- Firewood
- Laundry soap
- Tires
- Cosmetics
- Postage stamps
- Baseball bats
- Musical instruments
- Toothpaste
- Nail polish
- Chewing gum



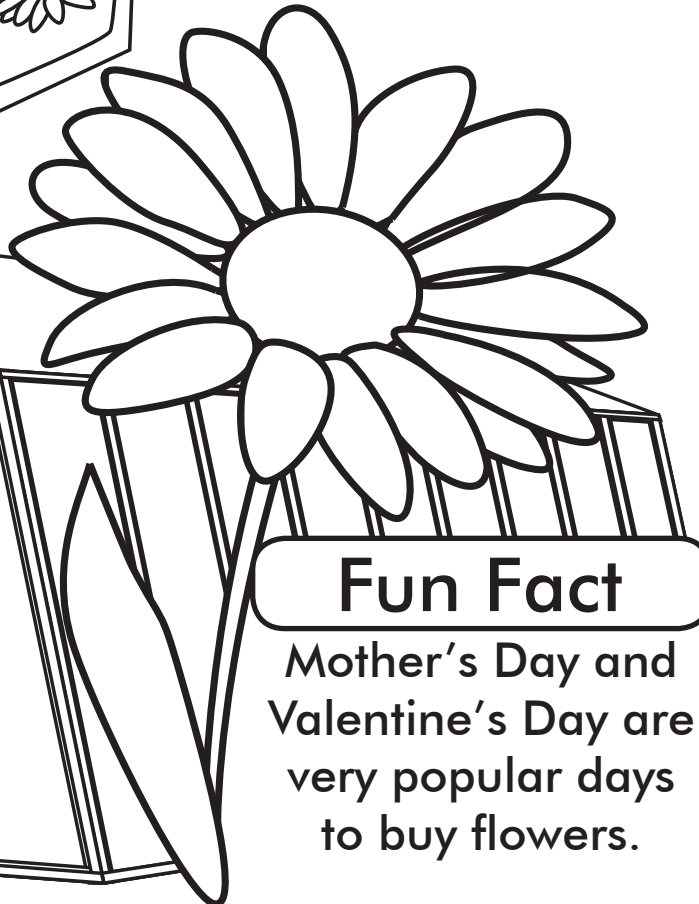
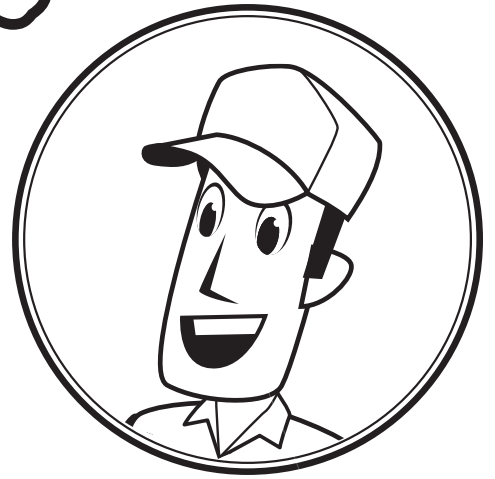
## Fun Fact

California forests are home to more than 4,000 native plants and 650 wildlife animals.



# FLOWERS

FLOWERS are a big part of California agriculture. Cut flowers, fruit trees, nursery plants, and house plants are all a part of agriculture.



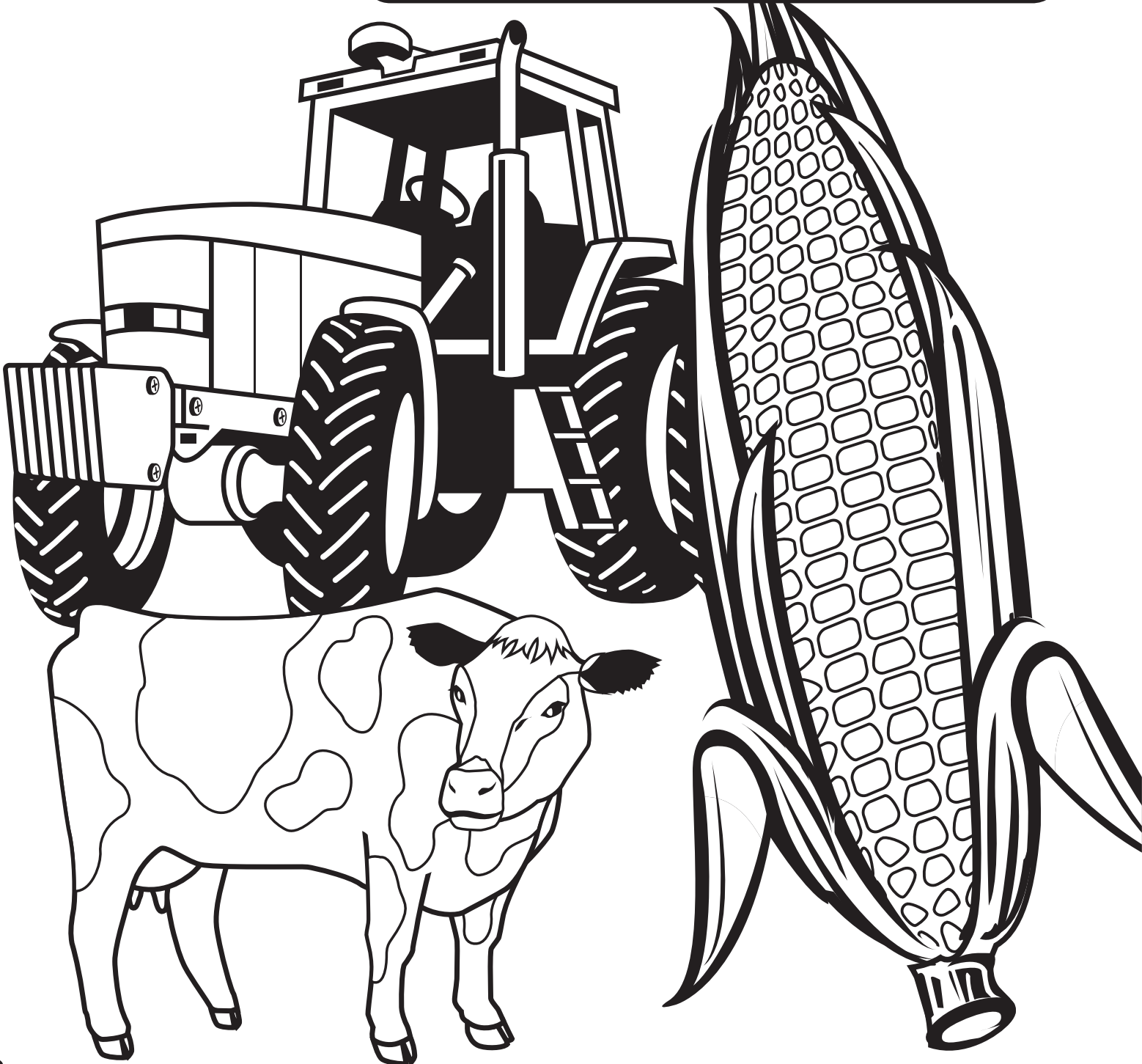
## Fun Fact

Mother's Day and Valentine's Day are very popular days to buy flowers.

# FUEL



FUEL can be used to make energy. There are many uses for energy on the farm. Cow manure can be made into FUEL that can heat or cool buildings, or provide lighting and electricity. Corn can be made into ethanol, which is used to fuel cars, trucks and tractors.





Now that you have learned  
the meaning of THE FIVE F'S,  
it is time to review.



# Activity

Match the product with the related "F."

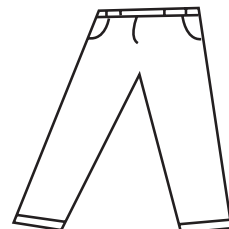
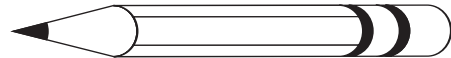
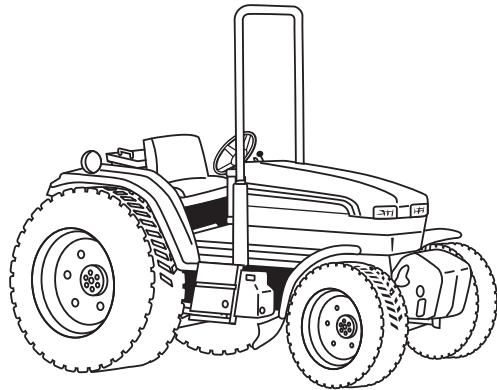
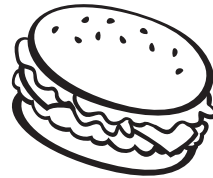
FIBER

FORESTS

FOOD

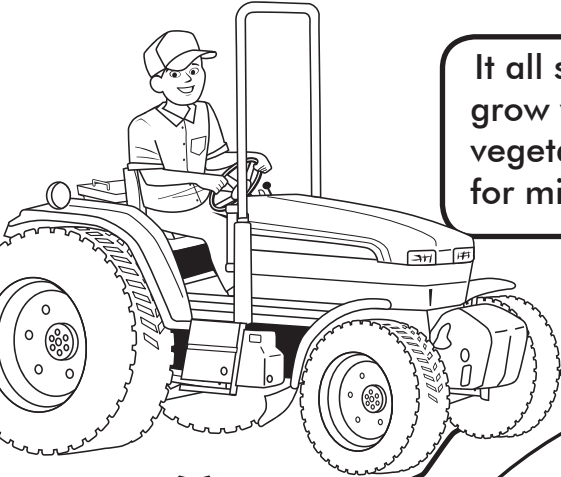
FLOWERS

FUEL



# THERE'S A FARM IN MY PIZZA?

Follow the trail of how pizza is made, from the farm to the parlor.



It all starts on the farm. FARMERS grow wheat, tomatoes, olives and vegetables. They raise dairy cows for milk and pigs for meat.



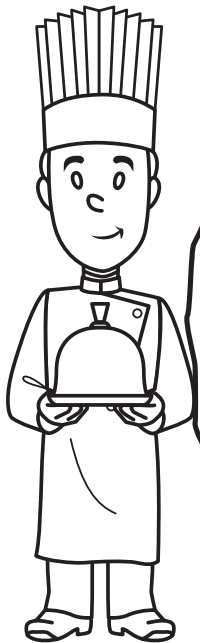
FARM WORKERS spend time growing and harvesting our food.



TRUCK DRIVERS transport the products to be processed.



Color this pizza with your favorite toppings!



CHEFS cook the pizza—just the way you like it!

WORKERS turn some products into the food people eat.

- Wheat is milled into flour for the crust.
- Tomatoes are cooked into sauce.
- Milk is made into cheese.
- Olives and vegetables are prepared and packaged.
- Sausage comes from pigs.



# FARMERS MARKETS

FARMERS MARKETS have existed since we began farming 10,000 years ago. Historically, when families produced more food than they needed, they would meet in the town square to sell or trade their excess commodities. Farmers Markets became a traditional way of selling local agricultural products.



How many items can you find that would be sold at a Farmers Market?

S T U N L A W P U S S T D J T  
 C E L M S S E M G B E Y G R R  
 Q P T L H A I K V S K V X L K  
 T O J A C A B N O E O D I K F  
 F R A H N S A I D T H I D L S  
 H N E T M A H I J A C U T G O  
 R S Z U U C R H D D I F I G S  
 F I L Z A L A G T G T E R C P  
 Q P C T M A H L E G R R A K M  
 C M S E J U V I M M A W I K Z  
 K I W I F R U I T O O J S X J  
 P A M W Q C B E Z O N P I J E  
 K F S G T L Q J M Q D D N K R  
 G U I P O G H Y Y T W A S O O  
 V O A K Z D I T K T G W Q R V



Word Bag  
 ALMONDS  
 ARTICHOKEs  
 DATES  
 FIGS  
 KIWIFRUIT  
 OLIVES  
 PEACHES  
 PISTACHIOS  
 PLUMS  
 POMEGRANATES  
 RAISINS  
 RICE  
 WALNUTS

# FARMING IS EVERYWHERE

## Top 3 Crops by County

**Alameda** Grapes, Cattle & Calves, Woody Ornamentals  
**Alpine** Pasture & Range, Cattle, Hay  
**Amador** Grapes, Cattle & Calves, Pasture  
**Butte** Walnuts, Rice, Almonds  
**Calaveras** Cattle & Calves, Poultry, Pasture  
**Colusa** Almonds, Rice, Walnuts  
**Contra Costa** Cattle & Calves, Tomatoes, Corn

**Del Norte** Milk, Cattle, Nursery  
**El Dorado** Apples, Grapes, Cattle & Calves  
**Fresno** Almonds, Poultry, Pistachios  
**Glenn** Almonds, Walnuts, Rice  
**Humboldt** Cattle & Calves, Milk, Nursery Products  
**Imperial** Cattle & Calves, Lettuce, Alfalfa Hay  
**Inyo** Cattle, Alfalfa Hay, Field Crops  
**Kern** Grapes, Almonds, Milk  
**Kings** Milk, Cotton, Cattle & Calves  
**Lake** Grapes, Pears, Walnuts  
**Lassen** Alfalfa Hay, Hay-other, Vegetables  
**Los Angeles** Nursery Products, Vegetables, Field Crops  
**Madera** Almonds, Milk, Pistachios  
**Marin** Milk, Poultry, Pasture  
**Mariposa** Cattle & Calves, Pasture, Livestock Products  
**Mendocino** Grapes, Pears, Cattle & Calves  
**Merced** Milk, Almonds, Chickens  
**Modoc** Alfalfa Hay, Cattle & Calves, Potatoes  
**Mono** Cattle & Calves, Alfalfa Hay, Sheep & Lambs  
**Monterey** Strawberries, Lettuce, Broccoli  
**Napa** Grapes, Cattle & Calves, Livestock Products  
**Nevada** Heifers, Milk Cows, Vegetables  
**Orange** Nursery Products, Strawberries, Vegetables  
**Placer** Cattle & Calves, Nursery, Rice

**Plumas** Cattle, Pasture, Alfalfa Hay  
**Riverside** Milk, Nursery Products, Grapes  
**Sacramento** Grapes, Milk, Poultry  
**San Benito** Vegetables, Lettuce, Peppers  
**San Bernardino** Milk, Cattle & Calves, Eggs  
**San Diego** Woody Ornamentals, Flowers, Nursery Plants  
**San Francisco** Field Crops, Apiary Products  
**San Joaquin** Grapes, Milk, Almonds  
**San Luis Obispo** Grapes, Strawberries, Vegetables  
**San Mateo** Nursery Plants, Brussels Sprouts, Flowers  
**Santa Barbara** Strawberries, Broccoli, Grapes  
**Santa Clara** Mushrooms, Nursery Products, Woody Ornamentals  
**Santa Cruz** Strawberries, Raspberries, Blackberries  
**Shasta** Hay, Nursery Products, Cattle  
**Sierra** Cattle, Pasture, Alfalfa Hay  
**Siskiyou** Nursery Plants, Alfalfa Hay, Cattle  
**Solano** Walnuts, Nursery, Almonds  
**Sonoma** Grapes, Milk, Poultry  
**Stanislaus** Almonds, Milk, Chickens  
**Sutter** Rice, Walnuts, Plums  
**Tehama** Walnuts, Almonds, Olives  
**Trinity** Range, Cattle, Irrigated Pasture  
**Tulare** Milk, Grapes, Cattle & Calves  
**Tuolumne** Livestock, Cattle, Pasture  
**Ventura** Strawberries, Lemons, Celery  
**Yolo** Almonds, Tomatoes, Grapes  
**Yuba** Walnuts, Rice, Plums



Circle the county you live in and identify the top crops.

2017-2018 statistics information obtained from County Agricultural Commissioner Reports.