

# Hobbies & Crafts



Premium Payouts:

Fairgrounds Office

Saturday, 8/10 1-4pm

Sunday, 8/11 9am-1pm

August 12th-16th, 8am-4pm

## Judge's Scoring:

Workmanship: 50  
 Originality: 20  
 Cleanliness: 10  
 Presentation: 10  
 Design: 10

**Total: 100**

## DEPARTMENT V: HOBBIES & CRAFTS

**Superintendent:** Beth Grimes, (541) 480-2456, [grimes@crestviewcable.com](mailto:grimes@crestviewcable.com)

**Entry Forms Due:** Friday, 8/2/24 by 5pm at Fairgrounds Office

Entry forms in back of book. Please submit entry forms by due date.

**Exhibit Drop-Off:** Monday, 8/5 at Carey Foster Hall from 9am-1pm & 4-7pm

Walk-in entries will be accepted only at the discretion of the superintendent. NO EARLY DROP-OFFS.

**Judging:** Tuesday, 8/6

**Exhibit Pick-Up:** Sunday, 8/11 at Carey Foster Hall from 9am-1pm. Contact the superintendent if you are unable to retrieve your items during this time slot.

### Rules for Open Class Hobbies & Crafts

- See Static Exhibit General Info on page 6.
- Exhibitors may enter 2 exhibits per class but will only receive a premium for the highest-ranked entry.
- All entries must be clean.
- All entries must be mounted to a base and/or portable, with NO LOOSE PARTS. No wall-mounted displays.
- School projects should be entered under a Youth class in the applicable Division, provided they are the exhibitor's own design and work.
- Collections may be re-entered after 2 years, providing the collection has been significantly added to/improved.
- Hired security will be inside Carey Foster Hall during Fair hours. However, the Fairgrounds is not responsible for lost or stolen items.
- "Display Only" exhibits must be approved by the Superintendent. Space is very limited.
- If the Superintendent believes an item is entered into the wrong division or class, they have the right to reassign the item.

**Awards:** Best of Show, Judge's Choice, Superintendent's Choice

*additional award:*

Outstanding Exhibitor

Awarded to each age group. To qualify, enter into multiple divisions in "Hobbies & Crafts". Winners will be awarded according to overall point accumulation, determined by ribbons awarded for the exhibitor's entries.

## DIVISION 802: Artificial & Dried Flowers

YOUTH UP TO 9	YOUTH 10-13	YOUTH 14-17	ADULT 18-59	SENIOR 60+	CLASS
3039 A	3039 B	3039 C	6039	9039	Arrangements
3042 A	3042 B	3042 C	6042	9042	Wreaths
3043 A	3043 B	3043 C	6043	9043	Other (specify)

## DIVISION 803: Polymer Clay

YOUTH UP TO 9	YOUTH 10-13	YOUTH 14-17	ADULT 18-59	SENIOR 60+	CLASS
3100 A	3100 B	3100 C	6100	9100	Eggs
3101 A	3101 B	3101 C	6101	9101	Animals
3102 A	3102 B	3102 C	6102	9102	People
3103 A	3103 B	3103 C	6103	9103	Jewelry (single pieces)
3104 A	3104 B	3104 C	6104	9104	Jewelry Set
3105 A	3105 B	3105 C	6105	9105	Individual Beads
3106 A	3106 B	3106 C	6106	9106	Ornaments (hanging; any holiday)
3107 A	3107 B	3107 C	6107	9107	Characters
3108 A	3108 B	3108 C	6108	9108	Flowers/Plants
3109 A	3109 B	3109 C	6109	9109	Insects/Bugs
3110 A	3110 B	3110 C	6110	9110	Other (specify)

## DIVISION 805: Beadwork

For jewelry, see Division 812.

YOUTH UP TO 9	YOUTH 10-13	YOUTH 14-17	ADULT 18-59	SENIOR 60+	CLASS
3204 A	3204 B	3204 C	6204	9204	Ornament (hanging; any holiday)
3205 A	3205 B	3205 C	6205	9205	Wearable Item (not jewelry)
3206 A	3206 B	3206 C	6206	9206	Other (specify)

## DIVISION 807: Air-Dry Clay

YOUTH UP TO 9	YOUTH 10-13	YOUTH 14-17	ADULT 18-59	SENIOR 60+	CLASS
3137 A	3137 B	3137 C	6137	9137	Decorative Item
3138 A	3138 B	3138 C	6138	9138	Figurine (person, animal, etc.)
3139 A	3139 B	3139 C	6139	9139	Vessel (mug, vase, etc.)
3140 A	3140 B	3140 C	6140	9140	Other (specify)

## DIVISION 809: Collections

- **Minimum of 5 items per collection**, no maximum, but space is limited. Collections will be accepted or denied at the Superintendent's discretion based on available space. CALL SUPERINTENDENT AHEAD OF DROP-OFF DAY IF ENTERING A LARGE COLLECTION.
- **No more than 4 collections may be entered per exhibitor.**
- Heirloom collections need to include a brief history of the items on display, including dates. Example: "The hair fob is grandmother (Smith) hair. Circa 1898."
- **All exhibits must be clean, portable, and secured/attached/mounted to a display** (i.e. shadow boxes, display boards, cases).
- **Display 3-D items such as keychains, buttons, etc., attached to display boards. Thimbles and spoons should be in display cases.**
- **Dioramas should be on a portable base, such as a box lid.**
- **Display flat items such as cards, stamps, coins, matchbooks, etc., in an album.**
- *No wall mounts. Collections will be displayed on flat surfaces.*
- Entries may be divided into different collections at the discretion of the Superintendent and/or Judge.

YOUTH UP TO 9	YOUTH 10-13	YOUTH 14-17	ADULT 18-59	SENIOR 60+	CLASS
3269A	3269B	3269C	6269A	9269	Cups & Saucers (5+ sets)
3270A	3270B	3270C	6270	9270	Drinking Vessels (mugs, shot glasses, etc.)
3271A	3271B	3271C	6271	9271	"From the Attic" (items that belonged to a relative. Any collection!)
3272A	3272B	3272C	6272	9272	Animals
3273A	3273B	3273C	6273	9273	Antiques (include dates if possible)
3274A	3274B	3274C	6274	9274	Bells
3275A	3275B	3275C	6275	9275	Bottles
3276A	3276B	3276C	6276	9276	Buttons: Clothing
3277A	3277B	3277C	6277	9277	Buttons: Pin-On
3278A	3278B	3278C	6278	9278	Ornaments (single holiday, specify)
3279A	3279B	3279C	6279	9279	Dolls or Action Figures
3280A	3280B	3280C	6280	9280	Key Chains
3281A	3281B	3281C	6281	9281	Magnets
3282A	3282B	3282C	6282	9282	Matchbooks
3283A	3283B	3283C	6283	9283	Post Cards
3284A	3284B	3284C	6284	9284	Sports Cards
3285A	3285B	3285C	6285	9285	Salt & Pepper Sets (5+)
3286A	3286B	3286C	6286	9286	Cream & Sugar Sets (5+)
3287A	3287B	3287C	6287	9287	Spoons
3288A	3288B	3288C	6288	9288	Thimbles
3289A	3289B	3289C	6289	9289	Stamps
3290A	3290B	3290C	6290	9290	Coins
3291A	3291B	3291C	6291	9291	Heirloom Memorabilia
3292A	3292B	3292C	6292	9292	Diorama (includes SMALL fairy gardens)
3293A	3293B	3293C	6293	9293	Other (specify)

## DIVISION 811: Greeting Cards

- Place each card in a **zip lock bag** of appropriate size.
- A message inside the card is optional, but may be a **deciding factor** during judging.
- **Submit 1 card unless class specifies otherwise.**
- "Upcycled" greeting cards should be made from **recycled greeting cards only. Specify the holiday** when submitting to "Holiday" or "Holiday Set" classes. **"Holiday Set" classes should include 4+ cards of the same holiday. "Collection" classes should include 5+ cards suitable for a variety of occasions.**

YOUTH UP TO 9	YOUTH 10-13	YOUTH 14-17	ADULT 18-59	SENIOR 60+	CLASS
3231 A	3231 B	3231 C	6231	9231	Painting/Drawing
3233 A	3233 B	3233 C	6233	9233	Scrap Crafting, General Greeting
3234 A	3234 B	3234 C	6234	9234	Scrap Crafting, Birthday
3235 A	3235 B	3235 C	6235	9235	Scrap Crafting, Holiday
3236 A	3236 B	3236 C	6236	9236	Scrap Crafting, Holiday Set
3251 A	3251 B	3251 C	6251	9251	Scrap Crafting, Collection
3237 A	3237 B	3237 C	6237	9237	Stamping, General Greeting
3238 A	3238 B	3238 C	6238	9238	Stamping, Birthday
3239 A	3239 B	3239 C	6239	9239	Stamping, Holiday
3240 A	3240 B	3240 C	6240	9240	Stamping, Holiday Set
3241 A	3241 B	3241 C	6241	9241	Stamping, Collection
3242 A	3242 B	3242 C	6242	9242	Creating from a Kit, General Greeting
3243 A	3243 B	3243 C	6243	9243	Creating from a Kit, Birthday
3244 A	3244 B	3244 C	6244	9244	Creating from a Kit, Holiday
3245 A	3245 B	3245 C	6245	9245	Creating from a Kit, Holiday Set
3246 A	3246 B	3246 C	6242	9246	Creating from a Kit, Collection
3247 A	3247 B	3247 C	6247	9247	Using Photo Taken by Exhibitor
3248 A	3248 B	3248 C	6248	9248	Fair Theme: "Let the Good Times Grow!"
3250 A	3250 B	3250 C	6250	9250	Combination of Techniques / Mixed Media
3251 A	3251 B	3251 C	6251	9251	Upcycled, General Greeting
3252 A	3252 B	3252 C	6252	9252	Upcycled, Birthday
3253 A	3253 B	3253 C	6253	9253	Upcycled, Holiday
3254 A	3254 B	3254 C	6254	9254	Upcycled, Holiday Set
3255 A	3255 B	3255 C	6255	9255	Upcycled, Collection

## DIVISION 812: Jewelry

YOUTH UP TO 9	YOUTH 10-13	YOUTH 14-17	ADULT 18-59	SENIOR 60+	CLASS
3212 A	3212 B	3212 C	6212	9212	Beaded, 1 item
3213 A	3213 B	3213 C	6213	9213	Beaded, set
3214 A	3214 B	3214 C	6214	9214	Leather, 1 item
3215 A	3215 B	3215 C	6215	9215	Leather, set
3216 A	3216 B	3216 C	6216	9216	Metal, 1 item
3217 A	3217 B	3217 C	6217	9217	Metal, set
3218 A	3218 B	3218 C	6218	9218	Wood, 1 item
3219 A	3219 B	3219 C	6219	9219	Wood, set
3220 A	3220 B	3220 C	6220	9220	Yarn/Fabric, 1 item
3221 A	3221 B	3221 C	6221	9221	Yarn/Fabric, set
3222 A	3222 B	3222 C	6222	9222	Macramé/Woven, 1 item
3223 A	3223 B	3223 C	6223	9223	Macramé/Woven, set
3224 A	3224 B	3224 C	6224	9224	Paper, 1 item
3225 A	3225 B	3225 C	6225	9225	Paper, set
3226 A	3226 B	3226 C	6226	9226	Ceramic, 1 item
3227 A	3227 B	3227 C	6227	9227	Ceramic, set
3228 A	3228 B	3228 C	6228	9228	Resin/Glass, 1 item
3229 A	3229 B	3229 C	6229	9229	Resin/Glass, set
3230 A	3230 B	3230 C	6230	9230	Other (specify)

## DIVISION 813: Leather Crafts *(for jewelry, see division 812)*

YOUTH UP TO 9	YOUTH 10-13	YOUTH 14-17	ADULT 18-59	SENIOR 60+	CLASS
3017 A	3017 B	3017 C	6017	9017	Wearable Item
3018 A	3018 B	3018 C	6018	9018	Functional Item (specify)
3019 A	3019 B	3019 C	6019	9019	Decorative Item/Accessory
3020 A	3020 B	3020 C	6020	9020	Book/Journal
3021 A	3021 B	3021 C	6021	9021	Saddle
3022 A	3022 B	3022 C	6022	9022	Other (specify)

## DIVISION 815: Metal Crafts *(for jewelry, see division 812)*

YOUTH UP TO 9	YOUTH 10-13	YOUTH 14-17	ADULT 18-59	SENIOR 60+	CLASS
3017 A	3017 B	3017 C	6017	9017	Wearable Item
3018 A	3018 B	3018 C	6018	9018	Functional Item (specify)
3019 A	3019 B	3019 C	6019	9019	Decorative Item/Sculpture
3022 A	3022 B	3022 C	6022	9022	Other (specify)

## DIVISION 816: Models from Kits

*Kits can be any brand and type, not exclusively "Lego" brand. Youth exhibitors should also see Division 829 to determine best Division to enter into.*

YOUTH UP TO 9	YOUTH 10-13	YOUTH 14-17	ADULT 18-59	SENIOR 60+	CLASS
3257 A	3257 B	3257 C	6257	9257	Architecture
3258 A	3258 B	3258 C	6258	9258	Boats/Ships
3259 A	3259 B	3259 C	6259	9259	Cars/Vehicles
3260 A	3260 B	3260 C	6260	9260	Planes
3261 A	3261 B	3261 C	6261	9261	Nature/Animals
3262 A	3262 B	3262 C	6262	9262	Robotics
3263 A	3263 B	3263 C	6263	9263	Space Exploration
3264 A	3264 B	3264 C	6264	9264	Trains
3265 A	3265 B	3265 C	6265	9265	Other (specify)

## DIVISION 817: Paper Crafts

YOUTH UP TO 9	YOUTH 10-13	YOUTH 14-17	ADULT 18-59	SENIOR 60+	CLASS
3008 A	3008 B	3008 C	6008	9008	Handmade Paper
3009 A	3009 B	3009 C	6009	9009	Origami, Misc.
3010 A	3010 B	3010 C	6010	9010	Origami Animals
3011 A	3011 B	3011 C	6011	9011	Paper Sculpture, Misc.
3014 A	3014 B	3014 C	6014	9014	Quilling Design (not a card)
3015 A	3015 B	3015 C	6015	9015	Maché Masks (wearable)
3016 A	3016 B	3016 C	6016	9016	Maché Masks (decorative)
3017 A	3017 B	3017 C	6017	9017	Maché Eggs
3018 A	3018 B	3018 C	6018	9018	Paper Maché Other (specify)
3019 A	3019 B	3019 C	6019	9019	Other (specify)

## DIVISION 818: "Pioneer" Crafts

YOUTH UP TO 9	YOUTH 10-13	YOUTH 14-17	ADULT 18-59	SENIOR 60+	CLASS
3350 A	3350 B	3350 C	6350	9350	Soap
3351 A	3351 B	3351 C	6351	9351	Candle
3352 A	3352 B	3352 C	6352	9352	Other (specify)

## DIVISION 819: Plaster Crafts

YOUTH UP TO 9	YOUTH 10-13	YOUTH 14-17	ADULT 18-59	SENIOR 60+	CLASS
3157 A	3157 B	3157 C	6157	9157	Cast Plaster
3158 A	3158 B	3158 C	6158	9158	Other (specify)



## DIVISION 820: Pottery

Glazed and fired functional ceramics made from any type of clay. Any size.

YOUTH UP TO 9	YOUTH 10-13	YOUTH 14-17	ADULT 18-59	SENIOR 60+	CLASS
3166 A	3166 B	3166 C	6166	9166	Bottle, Hand-Built
3167 A	3167 B	3167 C	6167	9167	Bottle, Wheel-Thrown
3168 A	3168 B	3168 C	6168	9168	Bowl, Hand-Built
3169 A	3169 B	3169 C	6169	9169	Bowl, Wheel-Thrown
3170 A	3170 B	3170 C	6170	9170	Drinking Vessel, Hand-Built (no handle)
3171 A	3171 B	3171 C	6171	9171	Drinking Vessel, Wheel-Thrown (no handle)
3172 A	3172 B	3172 C	6172	9172	Drinking Vessel, Hand-Built (with handle)
3173 A	3173 B	3173 C	6173	9173	Drinking Vessel, Wheel-Thrown (with handle)
3174 A	3174 B	3174 C	6174	9174	Plate, Hand-Built
3175 A	3175 B	3175 C	6175	9175	Plate, Wheel-Thrown
3176 A	3176 B	3176 C	6176	9176	Vase, Hand-Built
3177 A	3177 B	3177 C	6177	9177	Vase, Wheel-Thrown
3178 A	3178 B	3178 C	6178	9178	Set of 3-5 items, all same type and size (judged on uniformity and quality)
3179 A	3179 B	3179 C	6179	9179	Table Setting: 1 dinner plate, 1 bowl, 1 drinking vessel
3180 A	3180 B	3180 C	6180	9180	Other (specify)

## DIVISION 821: Scrapbooks

Display single pages in plastic page protector.

YOUTH UP TO 9	YOUTH 10-13	YOUTH 14-17	ADULT 18-59	SENIOR 60+	CLASS
3320 A	3320 B	3320 C	6320	9320	Cover
3321 A	3321 B	3321 C	6321	9321	Single Page (single side), Original Design
3323 A	3323 B	3323 C	6323	9323	2 Facing Pages, Original Design, same subject
3324 A	3324 B	3324 C	6324	9324	Complete Themed Book (5+ pages), Original Designs
3326A	3326B	3326C	6326	9326	Single Page (single side), Made from Kit
3327A	3327B	3327C	6327	9327	2 Facing Pages, Made from Kit, same subject
3328A	3328B	3328C	6328	9328	Complete Themed Book (5+ pages), Made from Kit

## DIVISION 822: Scrap Crafts

YOUTH UP TO 9	YOUTH 10-13	YOUTH 14-17	ADULT 18-59	SENIOR 60+	CLASS
3329 A	3329 B	3329 C	6329	9329	Decorated Bags
3330 A	3330 B	3330 C	6330	9330	Decorated Boxes
3331 A	3331 B	3331 C	6331	9331	Spiral Binders
3332 A	3332 B	3332 C	6332	9332	Calendars
3333 A	3333 B	3333 C	6333	9333	Party Favors
3334 A	3334 B	3334 C	6334	9334	Decorations

## DIVISION 823: Table Settings

Display on a standard size placemat no larger than 14x18 inches.

Homemade placemats are welcomed. Submit a **diagram of the setting arrangement**. A meal menu needs to be part of each place setting display.

YOUTH UP TO 9	YOUTH 10-13	YOUTH 14-17	ADULT 18-59	SENIOR 60+	CLASS
3294 A	3294 B	3294 C	6294	9294	Breakfast
3295 A	3295 B	3295 C	6295	9295	Lunch
3296 A	3296 B	3296 C	6296	9296	Dinner: Casual
3297 A	3297 B	3297 C	6297	9297	Dinner: Formal
3298 A	3298 B	3298 C	6298	9298	Picnic/BBQ
3299 A	3299 B	3299 C	6299	9299	Tea Party
3300 A	3300 B	3300 C	6300	9300	Sports Team or Other Group
3301 A	3301 B	3301 C	6301	9301	Birthday Party
3302 A	3302 B	3302 C	6302	9302	Fair Theme: "Let the Good Times Grow!"

## DIVISION 824: Team Projects

Teams can be a group of students or whole class. Exhibits should be a self-supported poster (i.e. tri-fold) or 3-D display that fits in a 36"x15" footprint. No live experiments or food/organic material that decomposes. All elements must be securely attached to the display or in a closed container. Do not display hazardous materials or objects.

CLASS	GRADE LEVEL
3318 A	4th-6th Grade
3318 B	7th-9th Grade
3318 C	10th-12th Grade

## DIVISION 825: Adult Hobbies

ADULT 18-59	SENIOR 60+	CLASS
6268	9268	Textile Crafts not included in the Textiles Dept.
6269	9269	Arts/Crafts not included in the Art Dept.
6270	9270	Other (specify)

## DIVISION 827: Thing-a-ma-jigs

YOUTH UP TO 9	YOUTH 10-13	YOUTH 14-17	ADULT 18-59	SENIOR 60+	CLASS
2980 A	2980 B	2980 C	6980	9980	Item unknown to the exhibitor.



## DIVISION 828: Wood Crafts

YOUTH UP TO 9	YOUTH 10-13	YOUTH 14-17	ADULT 18-59	SENIOR 60+	CLASS
3025 A	3025 B	3025 C	6025	9025	Any Set (4+ like items)
3026 A	3026 B	3026 C	6026	9026	Furniture (12"+)
3027 A	3027 B	3027 C	6027	9027	Furniture (up to 12")
3028 A	3028 B	3028 C	6028	9028	Furniture (doll)
3029 A	3029 B	3029 C	6029	9029	Toy
3030 A	3030 B	3030 C	6030	9030	Bowl
3031 A	3031 B	3031 C	6031	9031	Platter
3032 A	3032 B	3032 C	6032	9032	Pen
3033 A	3033 B	3033 C	6033	9033	Box
3034 A	3034 B	3034 C	6034	9034	Kitchen Utensil
3035 A	3035 B	3035 C	6035	9035	Hollow Vessel
3036 A	3036 B	3036 C	6036	9036	Ornament
3037 A	3037 B	3037 C	6037	9037	Carving/Sculpture: Non-Objective
3038 A	3038 B	3038 C	6038	9038	Carving/Sculpture: Wildlife
3039 A	3039 B	3039 C	6039	9039	Carving/Sculpture: Caricature/Figurine
3045 A	3045 B	3045 C	6045	9045	Bark Carving
3047 A	3047 B	3047 C	6047	9047	Canes and Walking Sticks
3048 A	3048 B	3048 C	6048	9048	*Large items
3049 A	3049 B	3049 C	6049	9049	Other (specify)

\*Examples: Play house, wagon, wheel barrow, etc. This class could be divided depending on the number of entries.

## DIVISION 829: Youth-Only Hobbies (exhibitors up to 17yo)

If entering in Youth-Only Hobbies, the exhibitor cannot enter a similar item into another division. Must fit within a **12"x12" footprint**. "Lego" and other building-block creations must be **exhibitor's own design** and not a kit.

YOUTH UP TO 9	YOUTH 10-13	YOUTH 14-17	CLASS
3304 A	3304 B	3304 C	Duct Tape Projects
3305 A	3305 B	3305 C	Collage (mixed-media)
3306 A	3306 B	3306 C	Models (freehand, kit design, Pine Wood Derby, etc.)
3307 A	3307 B	3307 C	Things of Nature Collections: Animal
3308 A	3308 B	3308 C	Things of Nature Collections: Other (specify)
3309 A	3309 B	3309 C	Mosaics
3310 A	3310 B	3310 C	Picture Frames
3311 A	3311 B	3311 C	Vehicles: "Lego" or similar
3312 A	3312 B	3312 C	Robots/Machines: "Lego" or similar
3313 A	3313 B	3313 C	Buildings: "Lego" or similar

3314 A	3314 B	3314 C	CLASS
3314 A	3314 B	3314 C	Creatures: "Lego" or similar
3315 A	3315 B	3315 C	Landscapes, Erector Sets, Tinker Toy (may be larger than 12"x12")
3317 A	3317 B	3317 C	Dioramas (incl. SMALL fairy gardens)
3319 A	3319 B	3319 C	Other (specify)

## DIVISION 830: Upcycled/Recycled Materials

YOUTH UP TO 9	YOUTH 10-13	YOUTH 14-17	ADULT 18-59	SENIOR 60+	CLASS
3360 A	3360 B	3360 C	6360	9360	Functional Items
3361 A	3361 B	3361 C	6361	9361	Decorative Items
3362 A	3362 B	3362 C	6362	9362	Wearable Items

## DIVISION 831: Akin Win

3+ family members combine their talents to put together a special gift basket. Each family member must submit at least 1 item, and no more than 3 items (no more than 9 items total in the basket). Design and display the basket in an attractive way.

- **When filling out the Static Exhibit Entry Form, list the names and ages of the participating family members, as well as what they contributed.**

## DIVISION 832: Diamond Painting

Classes are divided by the size of the diamond painting, not the item itself. Any "canvas" is acceptable (i.e. shirt, bookmark, purse, art board...). Entries do not need to be framed or behind glass.

YOUTH UP TO 9	YOUTH 10-13	YOUTH 14-17	ADULT 18-59	SENIOR 60+	CLASS
3421 A	3421 B	3421 C	6421	9421	Small "Paintings" (<5" diameter)
3422 A	3422 B	3422 C	6422	9422	Medium "Paintings" (5" to 8" diameter)
3423 A	3423 B	3423 C	6423	9423	Large "Paintings" (over 8" diameter)

## DIVISION 833: Journaling (completed/full journals only)

YOUTH UP TO 9	YOUTH 10-13	YOUTH 14-17	ADULT 18-59	SENIOR 60+	CLASS
3430 A	3430 B	3430 C	6430	9430	Self-Reflection or Daily Practice
3431 A	3431 B	3431 C	6431	9431	Travel or Nature
3432 A	3432 B	3432 C	6432	9432	Art or Food
3433 A	3433 B	3433 C	6433	9433	Other (specify)

new division!

**DIVISION 901: Salt Lick Contest**

Each entry must include a label that states the breed & species of animal that licked the salt block, as well as the type of salt. Title the salt lick as you would an art piece. Get creative and have fun!

A salt block will be awarded to first-place winners.

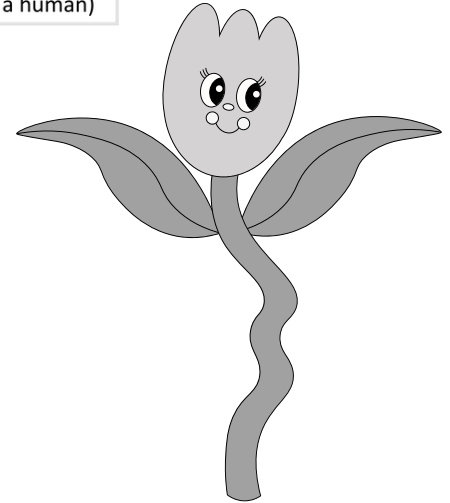
YOUTH UP TO 9	YOUTH 10-13	YOUTH 14-17	ADULT 18-59	SENIOR 60+	CLASS
3410 A	3410 B	3410 C	6410	9410	Salt Lick Only
3411 A	3411 B	3411 C	6411	9411	Salt Lick with a Poem (any type)
3412 A	3412 B	3412 C	6412	9412	Salt Lick Forgery (not licked by an animal; manipulated by a human)

**DIVISION 838: Scarecrow Contest**

One entry per exhibitor, per class. Youth entries should be created with as little adult assistance as possible. Scarecrows must be self-supported and weatherproof.

No social/political/controversial themes. **Display the scarecrow with a sign announcing its name.**

YOUTH UP TO 9	YOUTH 10-13	YOUTH 14-17	ADULT 18-59	SENIOR 60+	CLASS
3370 A	3370 B	3370 C	6370	9370	Fair Theme: "Let the Good Times Grow!"
3371 A	3371 B	3371 C	6371	9371	Whimsical/Fantasy Theme
3372 A	3372 B	3372 C	6372	9372	Most Likely to Scare a Crow
n/a	n/a	n/a	6373	9373	Commercial/Business Advertising
3374 A	3374 B	3374 C	6374	9374	Youth/Adult Organizations



*New at Fair!*

# EVERYDAY AG

**Come to Fair, grab an Everyday Ag booklet from the Info Booth, complete the Fair-wide scavenger hunt, and enter to win a \$50 gift certificate.**

The goal of *Everyday Ag* is to educate our community about the agricultural resources that go into creating the things we enjoy every day: from the food we eat to the clothes we wear. Keep an eye out for educational signage throughout the Fairgrounds.

*inspired by the Wyoming State Fair, with support from local businesses and organizations*

# Art

Awards: Best of Show, Judge's Choice, Superintendent's Choice

## DEPARTMENT W: ART

**Superintendent:** Violet Bales, totallycreativeviolet@yahoo.com

**Entry Forms Due:** Friday, 8/2/24 by 5pm at Fairgrounds Office

*Entry forms in back of book. Please submit entry forms by due date.*

**Exhibit Drop-Off: Monday, 8/5 at Carey Foster Hall from 9am-1pm & 4-7pm**

*Walk-in entries will be accepted only at the discretion of the superintendent. NO EARLY DROP-OFFS.*

**Judging: Tuesday, 8/6**

**Exhibit Pick-Up: Sunday, 8/11 at Carey Foster Hall from 9am-1pm.** Contact the superintendent if you are unable to retrieve your items during this time slot.

### Rules for Open Class Art

- See Static Exhibit General Info on page 6.
- Artwork must be the exhibitor's own, original work.
- Artwork must have been done in the last 2 years and not previously exhibited at the Crook County Fair.
- 2-dimensional entries must be at least 5"x7" (not including frame/mount)
- FRAMED artwork must be ready-to-hang (with wire or hooks attached to back) or will not be accepted.
- UNFRAMED artwork must be matted or mounted onto a stiff backing such as foam core or poster board.
- Each entry should be labeled on the back with the following information: **Name of Artist, Artwork Title, Medium/Media, and Date of Creation.**
- All artwork must be completely dry.
- An exhibitor may enter into more than one class in each division, but **will only be paid one premium per division.**
- An artwork can only be entered one time, under one class (exception: entries into Division 839: "Fair Theme Contest" may be entered into an additional division, if applicable)
- *Note: the Superintendent may re-classify an entry at her discretion.*

When choosing which division to enter under, use the following definitions:

- PROFESSIONAL artists make a living selling their artwork, usually have formal/academic training, and often instruct new artists in their field
- SEMI-PROFESSIONAL artists sell some of their artwork here and there, may or may not have formal training, and usually have a "day job" to support their practice
- AMATEUR artists are young in their art journey, usually creating artwork as a passion or hobby.

## Art Premiums:



Premium Payouts:

Fairgrounds Office

Saturday, 8/10 1-4pm  
Sunday, 8/11 9am-1pm  
August 12th-16th, 8am-4pm

### DIVISION 839: Fair Theme Contest

*All media and skill levels accepted. Artwork entered in this division may be entered into an additional division, if applicable.*

YOUTH 1-5	YOUTH 6-10	YOUTH 11-17	ADULT 18-59	SENIOR 60+	CLASS
3360 A	3360 B	3306 C	6360	9360	2024 Fair Theme: "Let the Good Times Grow!"

### DIVISION 824: Painted Rocks

*All skill levels accepted. Materials other than paint are acceptable.*

YOUTH 1-5	YOUTH 6-10	YOUTH 11-17	ADULT 18-59	SENIOR 60+	CLASS
3600 A	3600 B	3600 C	6600	9600	Animal
3601 A	3601 B	3601 C	6601	9601	Holiday
3602 A	3602 B	3602 C	6602	9602	Landscape
3603 A	3603 B	3603 C	6603	9603	Abstract
3604 A	3604 B	3604 C	6604	9604	Cartoon/Character
3605 A	3605 B	3605 C	6605	9605	People/Portrait
3607 A	3607 B	3607 C	6607	9607	Mandala/Dot Art
3608 A	3608 B	3608 C	6608	9608	Floral/Plants
3609 A	3609 B	3609 C	6609	9609	Other (specify)

### DIVISION 826: Toile & Decorative Painting

*All skill levels accepted.*

YOUTH 1-5	YOUTH 6-10	YOUTH 11-17	ADULT 18-59	SENIOR 60+	CLASS
2978 A	2978 B	2978 C	6978	9978	On Wood
2979 A	2979 B	2979 C	6979	9979	On Metal
2980 A	2980 B	2980 C	6980	9980	On Stone
2981 A	2981 B	2981 C	6981	9981	Other Substrate (specify)



# Oil or Acrylic

Please make sure artwork is fully dry.

## DIVISION 840: Amateur (oil or acrylic artwork)

YOUTH 1-5	YOUTH 6-10	YOUTH 11-17	ADULT 18-59	SENIOR 60+	CLASS
3363 A	3363 B	3363 C	6363	9363	Landscape
3364 A	3364 B	3364 C	6364	9364	People/Portrait
3365 A	3365 B	3365 C	6365	9365	Animal
3366 A	3366 B	3366 C	6366	9366	Seascape/Water
3367 A	3367 B	3367 C	6367	9367	Still Life
3368 A	3368 B	3368 C	6368	9368	Floral/Plants
3369 A	3369 B	3369 C	6369	9369	Abstract/Non-Objective
3370 A	3370 B	3370 C	6370	9370	Other (specify)

## DIVISION 841: Semi-Professional (oil or acrylic artwork)

ADULT 18-59	SENIOR 60+	CLASS
6373	9373	Landscape
6374	9374	People/Portrait
6375	9375	Animal
6376	9376	Seascape/Water
6377	9377	Still Life
6378	9378	Floral/Plants
6379	9379	Abstract/Non-Objective
6380	9380	Other (specify)

## DIVISION 842: Professional (oil or acrylic artwork)

ADULT 18-59	SENIOR 60+	CLASS
6395	9395	Landscape
6396	9396	People/Portrait
6397	9397	Animal
6398	9398	Seascape/Water
6399	9399	Still Life
6400	9400	Floral/Plants
6401	9401	Abstract/Non-Objective
6402	9402	Other (specify)

# Mixed Media & Collage

Artwork where two or more materials are used, not counting the substrate. Materials can include those not listed in this department.

## DIVISION 843: Amateur (mixed media/collage artwork)

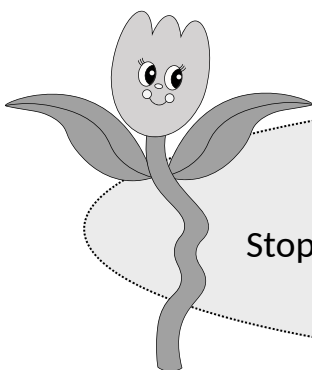
YOUTH 1-5	YOUTH 6-10	YOUTH 11-17	ADULT 18-59	SENIOR 60+	CLASS
3406 A	3406 B	3406 C	6406	9406	Landscape
3407 A	3407 B	3407 C	6407	9407	People/Portrait
3408 A	3408 B	3408 C	6408	9408	Animal
3409 A	3409 B	3409 C	6409	9409	Seascape/Water
3410 A	3410 B	3410 C	6410	9410	Still Life
3411 A	3411 B	3411 C	6411	9411	Floral/Plants
3412 A	3412 B	3412 C	6412	9412	Abstract/Non-Objective
3413 A	3413 B	3413 C	6413	9413	Other (specify)

## DIVISION 844: Semi-Professional (mixed media/collage artwork)

ADULT 18-59	SENIOR 60+	CLASS
6417	9417	Landscape
6418	9418	People/Portrait
6419	9419	Animal
6420	9420	Seascape/Water
6421	9421	Still Life
6422	9422	Floral/Plants
6423	9423	Abstract/Non-Objective
6424	9424	Other (specify)

## DIVISION 845: Professional (mixed media/collage artwork)

ADULT 18-59	SENIOR 60+	CLASS
6439	9439	Landscape
6440	9440	Portrait
6441	9441	Animal
6442	9442	Seascape
6443	9443	Still-life
6444	9444	Floral
6445	9445	Abstract
6446	9446	Other (specify)



## Art Workshops: Saturday @ Fair!

Stop by Carey Foster Hall during Fair to sign up for a free hands-on workshop! Check the Fair schedule for exact times.

# Watercolor

Includes water-soluble colored pencils and similar materials that are mixed with water to create artwork. Watercolor resist is acceptable.

## DIVISION 846: Amateur (watercolor artwork)

YOUTH 1-5	YOUTH 6-10	YOUTH 11-17	ADULT 18-59	SENIOR 60+	CLASS
3450 A	3450 B	3450 C	6450	9450	Landscape
3451 A	3451 B	3451 C	6451	9451	People/ Portrait
3452 A	3452 B	3452 C	6452	9452	Animal
3453 A	3453 B	3453 C	6453	9453	Seascape/Water
3454 A	3454 B	3454 C	6454	9454	Still Life
3455 A	3455 B	3455 C	6455	9455	Floral/Plants
3456 A	3456 B	3456 C	6456	9456	Abstract/Non-Objective
3457 A	3457 B	3457 C	6457	9457	Other (specify)

## DIVISION 847: Semi-Professional (watercolor artwork)

ADULT 18-59	SENIOR 60+	CLASS
6461	9461	Landscape
6462	9462	People/Portrait
6463	9463	Animal
6464	9464	Seascape/Water
6465	9465	Still Life
6466	9466	Floral/Plants
6467	9467	Abstract/Non-Objective
6468	9468	Other (specify)

## DIVISION 848: Professional (watercolor artwork)

ADULT 18-59	SENIOR 60+	CLASS
6486	9486	Landscape
6487	9487	People/Portrait
6488	9488	Animal
6489	9489	Seascape/Water
6490	9490	Still Life
6491	9491	Floral/Plants
6492	9492	Abstract/Non-Objective
6493	9493	Other (specify)

# Chalk & Pastel

Includes charcoal.

## DIVISION 849: Amateur (chalk/pastel artwork)

YOUTH 1-5	YOUTH 6-10	YOUTH 11-17	ADULT 18-59	SENIOR 60+	CLASS
3500 A	3500 B	3500 C	6500	9500	Landscape
3501 A	3501 B	3501 C	6501	9501	People/Portrait
3502 A	3502 B	3502 C	6502	9502	Animal
3503 A	3503 B	3503 C	6503	9503	Seascape/Water
3504 A	3504 B	3504 C	6504	9504	Still Life
3505 A	3505 B	3505 C	6505	9505	Floral/Plants
3506 A	3506 B	3506 C	6506	9506	Abstract/Non-Objective
3507 A	3507 B	3507 C	6507	9507	Other (specify)

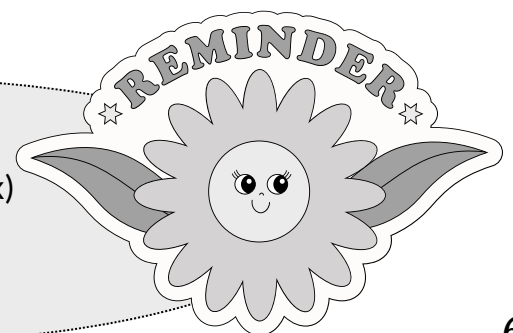
## DIVISION 850: Semi-Professional (chalk/pastel artwork)

ADULT 18-59	SENIOR 60+	CLASS
6510	9510	Landscape
6511	9511	People/Portrait
6512	9512	Animal
6513	9513	Seascape/Water
6514	9514	Still Life
6515	9515	Floral/Plants
6516	9516	Abstract/Non-Objective
6517	9517	Other (specify)

## DIVISION 851: Professional (chalk/pastel artwork)

ADULT 18-59	SENIOR 60+	CLASS
6520	9520	Landscape
6521	9521	People/Portrait
6522	9522	Animal
6523	9523	Seascape/Water
6524	9524	Still Life
6525	9525	Floral/Plants
6526	9526	Abstract/Non-Objective
6527	9527	Other (specify)

Framed artwork must be ready-to-hang (wire/hooks on back) and non-framed artwork must be mounted on a stiff backing.



# Drawing

Artwork made from drawing materials with a fine tip such as graphite/pencil, colored pencil, crayon, pens, markers, etc.  
See also "Chalk & Pastel".

## DIVISION 852: Amateur (drawn artwork)

YOUTH 1-5	YOUTH 6-10	YOUTH 11-17	ADULT 18-59	SENIOR 60+	CLASS
3530 A	3530 B	3530 C	6530	9530	Landscape
3531 A	3531 B	3531 C	6531	9531	People/Portrait
3532 A	3532 B	3532 C	6532	9532	Animal
3533 A	3533 B	3533 C	6533	9533	Seascape/Water
3534 A	3534 B	3534 C	6534	9534	Still Life
3535 A	3535 B	3535 C	6535	9535	Floral/Plants
3536 A	3536 B	3536 C	6536	9536	Abstract/Non-Objective
3537 A	3537 B	3537 C	6537	9537	Other (specify)

## DIVISION 853: Semi-Professional (drawn artwork)

ADULT 18-59	SENIOR 60+	CLASS
6540	9540	Landscape
6541	9541	People/Portrait
6542	9542	Animal
6543	9543	Seascape/Water
6544	9544	Still Life
6545	9545	Floral/Plants
6546	9546	Abstract/Non-Objective
6547	9547	Other (specify)

## DIVISION 854: Professional (drawn artwork)

ADULT 18-59	SENIOR 60+	CLASS
6550	9550	Landscape
6551	9551	People/Portrait
6552	9552	Animal
6553	9553	Seascape/Water
6554	9554	Still Life
6555	9555	Floral/Plants
6556	9556	Abstract/Non-Objective
6557	9557	Other (specify)

# Fluid Media

Artwork made from any liquid material that is not watercolor. This could include ink, pouring medium, etc.

## DIVISION 852: Amateur (fluid media artwork)

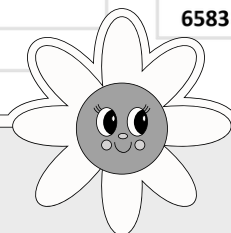
YOUTH 1-5	YOUTH 6-10	YOUTH 11-17	ADULT 18-59	SENIOR 60+	CLASS
3560 A	3560 B	3560 C	6560	9560	Landscape
3561 A	3561 B	3561 C	6561	9561	People/Portrait
3562 A	3562 B	3562 C	6562	9562	Animal
3563 A	3563 B	3563 C	6563	9563	Seascape/Water
3564 A	3564 B	3564 C	6564	9564	Still Life
3565 A	3565 B	3565 C	6565	9565	Floral/Plants
3566 A	3566 B	3566 C	6566	9566	Abstract/Non-Objective
3567 A	3567 B	3567 C	6567	9567	Other (specify)

## DIVISION 853: Semi-Professional (fluid media artwork)

ADULT 18-59	SENIOR 60+	CLASS
6568	9568	Landscape
6569	9569	People/Portrait
6570	9570	Animal
6571	9571	Seascape/Water
6572	9572	Still Life
6573	9573	Floral/Plants
6574	9574	Abstract/Non-Objective
6575	9575	Other (specify)

## DIVISION 854: Professional (fluid media artwork)

ADULT 18-59	SENIOR 60+	CLASS
6576	9576	Landscape
6577	9577	People/Portrait
6578	9578	Animal
6579	9579	Seascape/Water
6580	9580	Still Life
6581	9581	Floral/Plants
6582	9582	Abstract/Non-Objective
6583	9583	Other (specify)



Label the back of your artwork!  
(Name, Title, Medium, Date)



### DIVISION 858: Groupings & Bodies of Work

Two or more artworks that were created together as part of a group. The set or series will be judged as a group. Artworks entered in this division cannot be entered elsewhere as individual artworks.

YOUTH 1-5	YOUTH 6-10	YOUTH 11-17	ADULT 18-59	SENIOR 60+	CLASS
3590 A	3590 B	3590 C	6590	9590	Oil or Acrylic
3591 A	3591 B	3591 C	6591	9591	Mixed Media or Collage
3592 A	3592 B	3592 C	6592	9592	Watercolor
3593 A	3593 B	3593 C	6593	9593	Chalk or Pastel
3594 A	3594 B	3594 C	6594	9594	Drawn Artwork
3595 A	3595 B	3595 C	6595	9595	Fluid Media
3596 A	3596 B	3596 C	6596	9596	Digital Artwork
3597 A	3597 B	3597C	6597	9597	Other (specify)

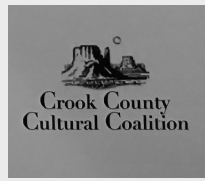
### DIVISION 859: Digital Art

All skill levels accepted. Digital Art is any creative work that has been enhanced or created using software on a computer or other smart device. Artwork must be the exhibitor's own original artwork.

YOUTH 1-5	YOUTH 6-10	YOUTH 11-17	ADULT 18-59	SENIOR 60+	CLASS
3549 A	3549 B	3549 C	6549	9549	Landscape
3550 A	3550 B	3550 C	6550	9550	People/Portrait
3551 A	3551 B	3551 C	6551	9551	Animal
3552 A	3552 B	3552 C	6552	9552	Seascape/Water
3553 A	3553 B	3553 C	6553	9553	Still Life
3554 A	3554 B	3554 C	6554	9554	Floral/Plants
3555 A	3555 B	3555 C	6555	9555	Abstract/Non-Objective
3556 A	3556 B	3556 C	6556	9556	Other (specify)



## 2024 Crook County Fair Swine & Rabbit Shows



### Interested in participating?

Contact Haley at the Fairgrounds:  
[haley.crow@crookcountyor.gov](mailto:haley.crow@crookcountyor.gov)  
 (541) 447-6575

### Applications for Youth Mentors and Buddies are available online:

[crookcountyfairgrounds.com/p/fair/bacon-buddies](http://crookcountyfairgrounds.com/p/fair/bacon-buddies)

Last year, the Bacon Buddies® program paired two 4-H Youth Mentors with a Buddy (participant with special needs) to show a pig during Fair. This year, we are introducing a new species to the mix: rabbits! Youth Mentors will be paired with Buddies to show either rabbits OR pigs at Fair! Leading up to Fair time, Mentors and Buddies will attend an Orientation Day to get to know each other and learn about the animals they will be showing. Participants will receive a Bacon Buddies® t-shirt, group & individual photos, food vouchers to use at Fair, and a Bacon Buddies® rosette ribbon.

*Made possible with grant funds from the Crook County Cultural Coalition, in partnership with Crook County 4-H.*