

2022 DANE COUNTY FAIR

JULY 21-24, 2022

ALLIANT ENERGY CENTER

INFORMATION AS OF MAY 26, 2022

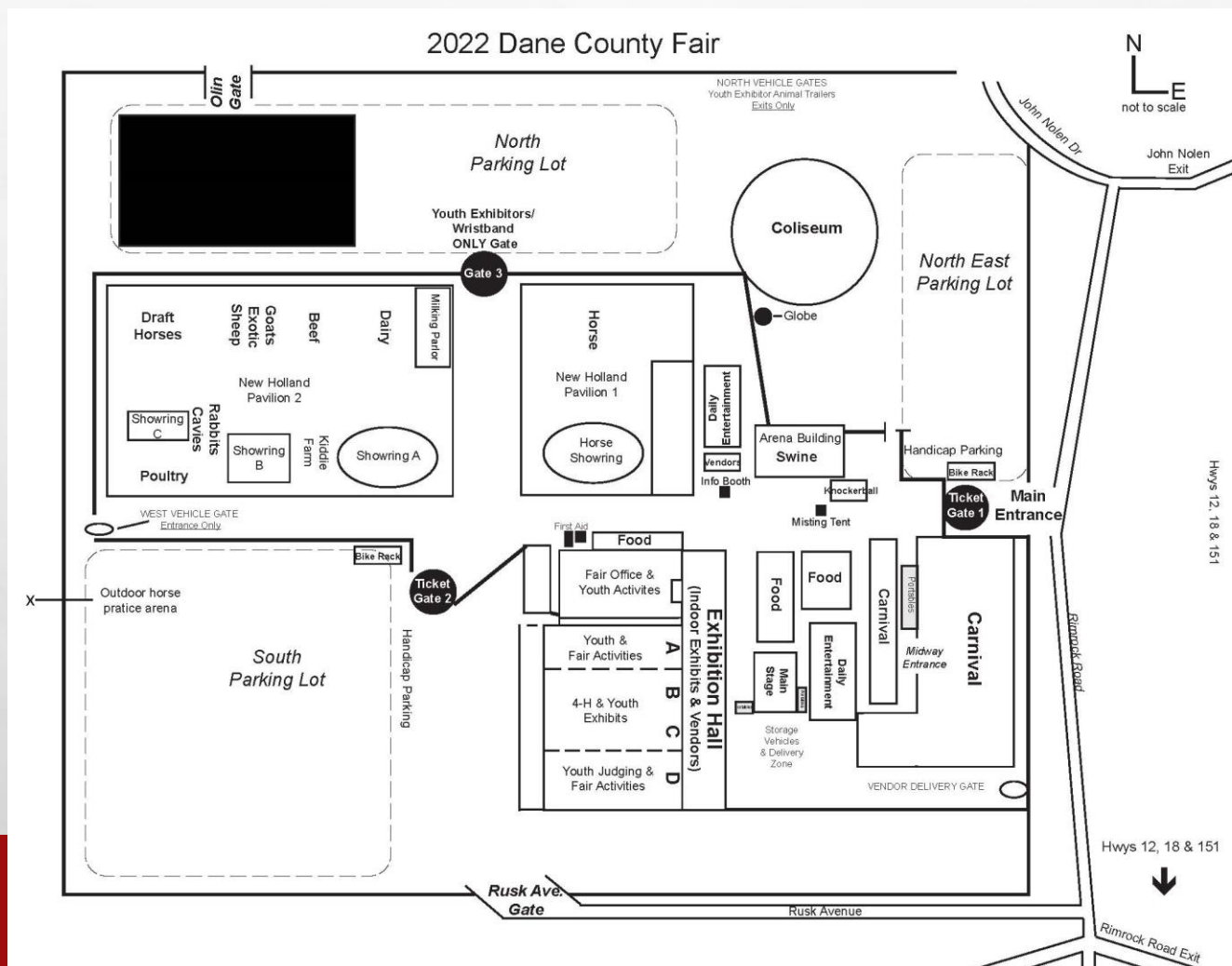


OVERVIEW

- Dates: Thursday, July 21 – Sunday, July 24
- Schedule and details will be listed on the Fair's website – www.danecountyfair.com
- Fair Premium Book located on the [Youth Exhibitors](#) page at www.danecountyfair.com
- Any questions can be directed to the Fair Office – info@danecountyfair.com or 608-291-2900



OVERVIEW – GROUNDS MAP



OVERVIEW – FAIR SHIRT

- Purchase via FairEntry or by order form with check located on the [Fair Merchandise](http://www.danecountyfair.com) page at www.danecountyfair.com by June 3, 2022.
- Shirts will be distributed with packets to Club/Chapter Leaders at pick up on June 23.
- Color will be Aquatic Blue:
 - \$10/shirt for XS-XL
 - \$12/shirt for 2XL
 - \$13/shirt for 3XL and 4XL



PC54
AQUATIC BLUE

ENTRIES - FAIRENTRY

- Entry process will remain the same – online through [FairEntry](#).
 - Opens April 20, 2022, Closes June 2, 2022 at 11:59pm.
 - Payments will be processed by credit card via Fair Entry or check (by June 10) mailed directly to the Fair Office (PO Box 287, Oregon, WI 53575).
 - Entries, admission wristbands, shavings/bedding, Fair shirts, privacy panels, etc. all processed through FairEntry.
 - [Guide to Entries](#) & [Exhibitor Resource Guide](#)
- All FairEntry questions are to be directed to the Fair Entries Department at fair@wdexpo.com or 608-469-2428.
- Fair Premium Book & FairEntry link is located on the [Youth Exhibitors](#) page at www.danecountyfair.com.

ENTRIES – FAIRENTRY CONT.

- **NEW THIS YEAR –**
 - **Two Entry Fee Options (pick ONE for each exhibitor on initial Account Setup):**
 - Entry with Season Pass Wristband (\$12/exhibitor) for on-site Fair exhibitors or those attending the Fair.
 - Entry only (\$6/exhibitor) for pre-Fair exhibitors not attending the Fair.
 - **OPTIONAL – Danish Project Scheduled Drop-off:**
 - Monday, July 18 from 5:00pm – 8:00pm – sign up for timeslot via FairEntry to drop-off/check-in Danish projects ONLY (except Plants & Soil Science, Flowers & House Plants, and Foods & Nutrition)
 - **Late Entries will be accepted for \$25/submission June 3-9, 2022, 11:59pm.** Submission is defined as one or multiple Department/Class/Lot entries in one transaction per exhibitor. Entries will NOT be accepted after 6/9.
- After June 2, Club/Chapter Leaders will receive an email summary of club/chapter exhibitors, entries, and fees. **Leaders MUST review and reply to the email with approval or questions by NOON on Friday, June 10.**
 - Late entries will be shared as received throughout June 6-10.
- Club/Chapter Leader entry tag packet pick-up will be on June 23 (4pm-7pm) at AEC – Exhibition Hall.

ENTRIES – FAIRENTRY REMINDERS

- Exhibitors MUST select the Club/Chapter you are submitting the entry under (4-H, FFA, etc.)
- Make sure to register ALL entries for EACH EXHIBITOR in the family **BEFORE** clicking SUBMIT.
 - Once submitted, two emails will be received. Only AFTER the 2nd email approving entries, can you add additional items or entries. To remove any item or for any questions, contact the Fair Entries Dept. at fair@wdexpo.com or 608-469-2428 (not 4-H).
- 01-Fair Orders includes options for additional wristbands, T-shirts, shavings/bedding, etc.
 - Discounted wristband fees IF ordered with entries:
 - Exhibitor Season Wristband (\$6.00) – only for youth exhibitors participating at the Fair (no need to select if the Entry with Wristband option was selected at the start of the entry process)
 - Youth Season Wristband (\$7.00) – for youth family members attending the Fair, but NOT exhibiting
 - Adult Season Wristband (\$16.00) – adult family members attending the Fair

ENTRIES – FAIRENTRY REMINDERS

- Youth Animal Exhibitor Code of Practice – reference and acknowledgement in FairEntry when processing entries. The Code of Practice for all youth and their family members is listed in the Premium Book and on the website. Make sure to thoroughly read the Code of Practice; it touches on some of the following:
 - Treatment of animals
 - Proof of animal ownership; false ownership is illegal.
 - The use of drugs in animals
 - Any violation of the Code of Practice results in a forfeit of premiums and awards, disqualification for the youth exhibitor for the present Fair year, and a minimum one-year suspension from showing livestock at the Dane County Fair for the youth exhibitor and immediate family members and may result in a loss of eligibility for future shows. Possible civil penalties may be imposed by the proper authorities based on evidence provided by the show of exhibitors in violation of the Federal Food, Drug, and Cosmetic act/or the animal mistreatment, neglect and abandonment laws that apply on the local, state, and national levels.

ANIMAL PROJECTS (1-11, 13)

- Majority of the schedule is similar to 2021; refer to the Premium Book for Department details.
 - Move-in is Wednesday, July 20 from 12:00pm-8:00pm; swine and sheep start at 9:00am.
 - All market animals MUST arrive by 7:00pm.
 - [Showring Schedule](#) – as of 3/25/22
 - Move-out will be on Sunday, July 24 at 6:30pm (tack at 5:30pm).
- Additional animal health regulations will be required for some species; refer to the Premium Book.
- Education requirements submission deadline is June 15, 2022 via online form. [CLICK HERE](#) to view education offerings and Education Requirement Card for Animals and Horse & Pony (separate cards).
- Draft Horse Youth/Novice Congress is back at the Fair!

ANIMAL PROJECTS (1-11, 13) CONT.

- Pocket Pets will be held on Tuesday, July 19 for check-in (5:30pm) and judging (6:00pm) in Exhibit Hall B & C and will return home with youth exhibitor post judging.
- Dairy UPDATES:
 - Showmanship Clinic on Thursday, July 21 at 4:00pm.
 - Miss Q is now on Friday, July 22 at 5:00pm instead of Saturday.
- Swine UPDATES:
 - Registration is Saturday, April 23 between 9am-11am at 4-H Office.
 - Non-terminal show.
 - Exhibitors are responsible for transporting swine home/processing plant post Fair and may house their swine in the Arena building on Sunday night to collect on Monday morning by 7:30am.
 - Additional health certificates required showing a negative herd test for PRRS and PEDv.

ANIMAL PROJECTS (1-11, 13) CONT.

- Sheep UPDATES:

- Market lambs check-in and tag on Saturday, May 7 between 9am-11am at Stoughton Fairgrounds.
- Show is now at 2:00pm on Thursday, July 21 in Pavilion 2, Showring B.

- Poultry UPDATES:

- Avian Flu – as of 5/26/22, the Fair is moving forward with the exhibit and show and will follow guidance by WI Dept. of Agriculture. Any changes will be communicated if needed prior to the Fair.
- Pullorum testing will be required.

- Rabbit UPDATES:

- Pre-Fair rabbit tattooing will be offered by Mikayla Brey and held at the 4-H Office. [CLICK HERE](#) to sign up. We highly encourage exhibitors to sign up to avoid the stress of tattooing on check-in day.
 - Saturday, June 18 – 9:00am-11:00am

ANIMAL PROJECTS (1-11, 13) CONT.

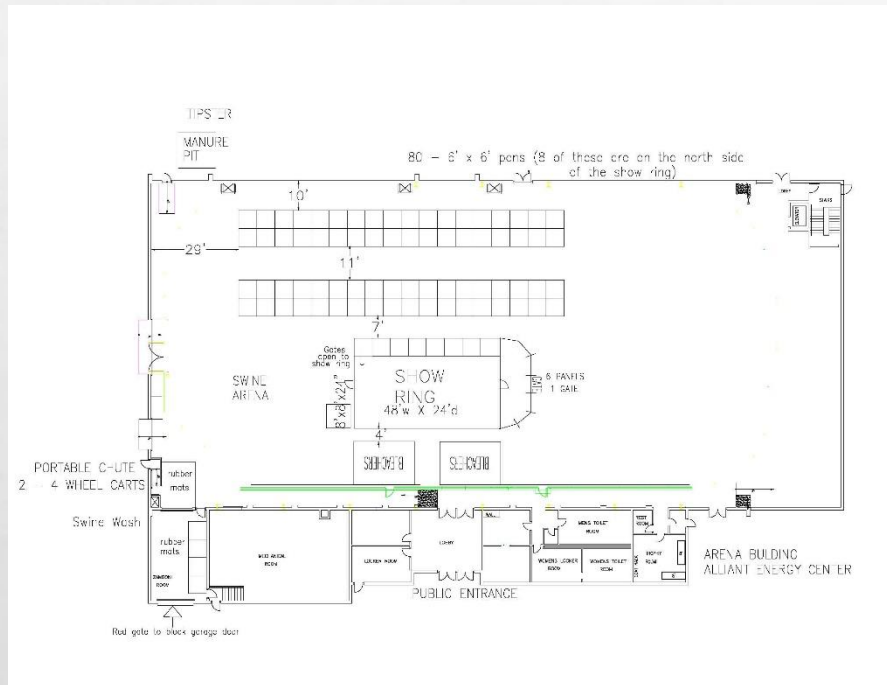
- Plans for the [Meat Animal Sale](#) and [Small Animal Market Sale](#) are managed by those respective committees; information listed in the Premium Book. Contact them directly with any questions.
 - Meat Animal Sale – Friday, July 22 at 6:45pm in Pavilion 2, Showring B
 - Small Animal Market Sale – Saturday, July 23 at 7:00pm in Pavilion 2, Showring C
- **Master Showman UPDATES:**
 - Moves to 9:00am on Sunday, July 24 in Pavilion 2, Showring B.
- **Dress-A-Critter:**
 - Sunday, July 24 at 11:15am in Pavilion 2, Showring B.
 - 1 entry per club, 1 animal per entry, and up to 4 club members per entry.
 - All club entries receive a cash prize.
 - Entries are due by 5:00pm on Saturday, July 23; forms will be located in the Fair Office, Mendota 1.
- [Details](#) for the above are located on the [Youth Exhibitors](#) page on the website at www.danecountyfair.com.

ANIMAL PROJECTS (1-11, 13) CONT.

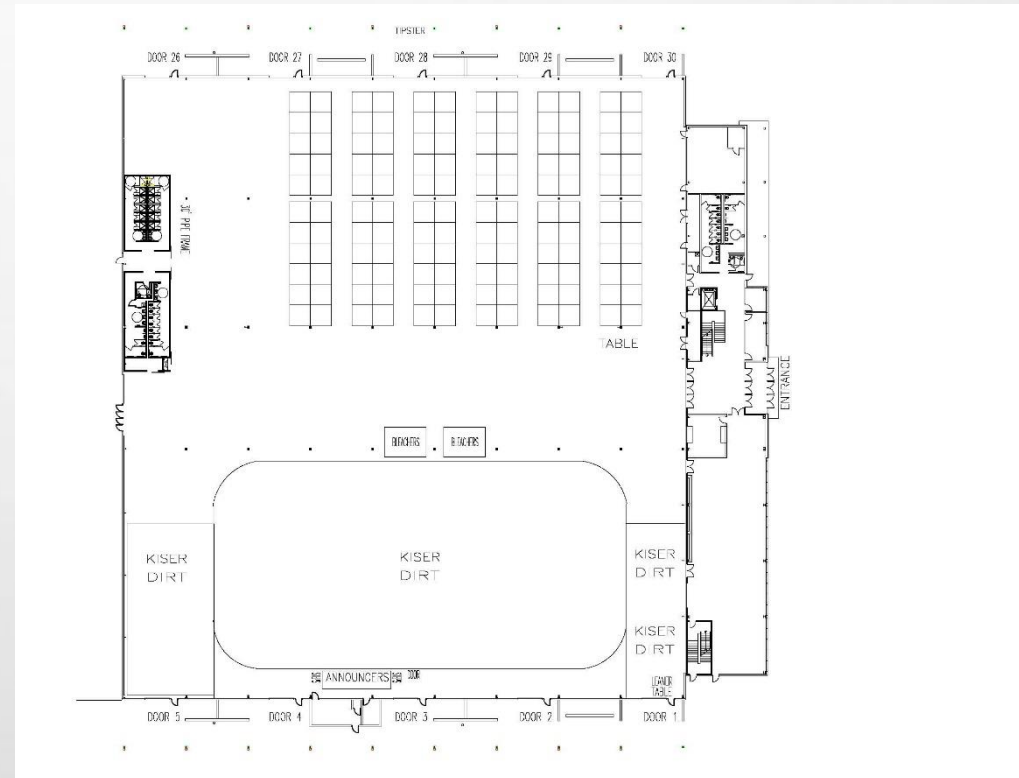
- **NEW SHOW – Rockstars in the Ring**

- A livestock show for youth with an intellectual disability to have the opportunity to show swine, a rabbit, or sheep.
- Sunday, July 24 at 1:00pm (Mentor training at 10:00am) in Pavilion 2, Showring B.
- Limited to 10 participants + mentors.
- **NEED** Mentors to work with youth participants and education them how to show with their animal (swine, rabbit, sheep).
- Details and forms for Participants and Mentors are located on the [Rockstars in the Ring](http://www.danecountyfair.com) page at www.danecountyfair.com.

ANIMAL PROJECTS (1-11, 13) MAPS

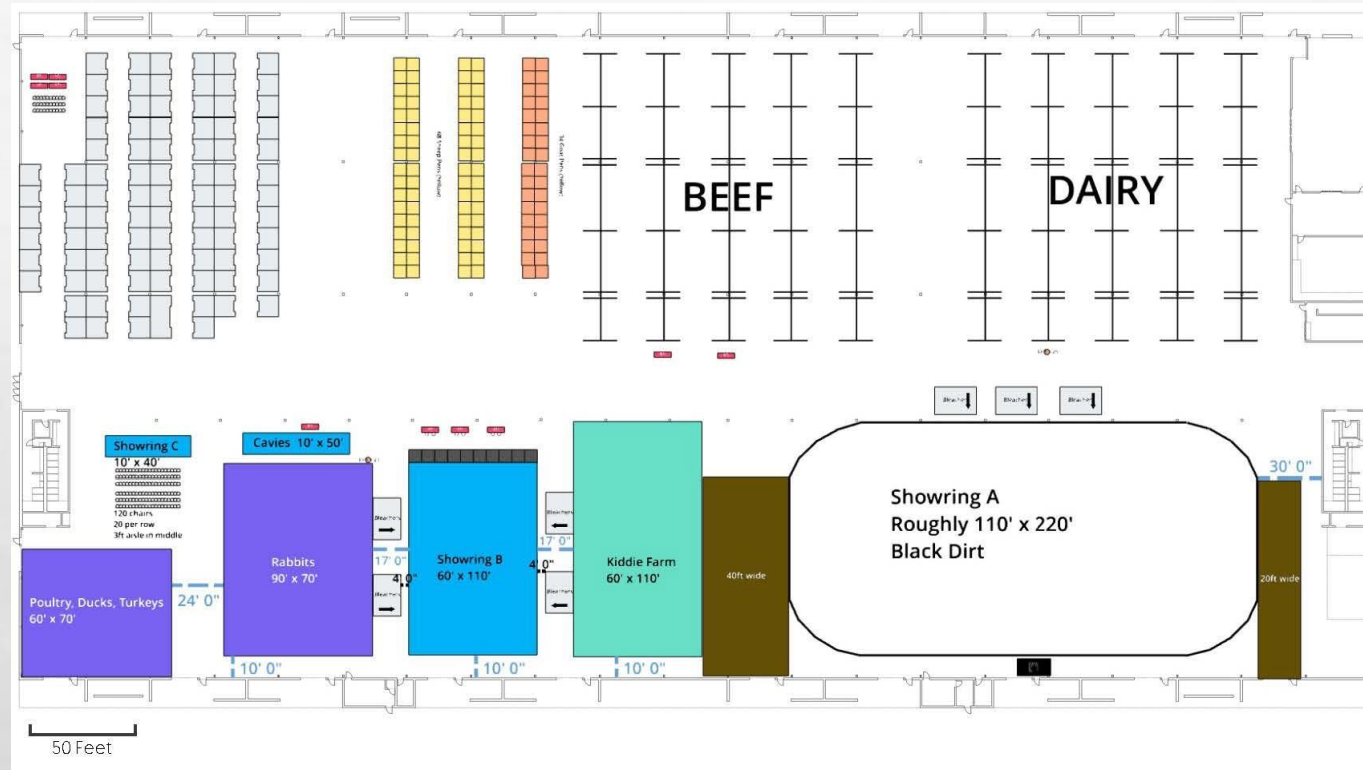


- Arena Building



- Pavilion 1

ANIMAL PROJECTS (1-11, 13) MAPS



● Pavilion 2

YOUTH EXHIBITOR PROJECT FLOW (ANIMAL)

Entries

- Open 4/20/22
- Close 6/2/22 at 11:59pm
- Animal Education requirements due by 6/15/22 via online form – [CLICK HERE](#)
- Packets available June 23

Move-in

- Wednesday, July 20
- Only animal projects will move-in on Wednesday
- Refer to the Department listing in the Premium Book for check-in times

Judging

- Schedule noted in the Premium Book per Department
- Animals displayed during Fair (July 21-24)

Move-out

- Sunday, July 24 at 6:30pm (tack 5:30pm)
- No overnight stays of exhibitors or guardians are permitted on Sunday night
- Swine may be left overnight to depart by 7:30am on Monday

NON-ANIMAL PROJECTS (10-34)

- Project check-in will be held Tuesday, July 19 in Exhibit Hall B & C during the times listed for each Department; it will not be scheduled.
 - **OPTIONAL – Danish Projects Drop-off** is available on Monday, July 18 from 5:00pm – 8:00pm. Sign up for timeslot via FairEntry to drop-off/check-in Danish projects ONLY (except Plants & Soil Science, Flowers & House Plants, and Foods & Nutrition)
- Check-out will be held Sunday, July 24 from 6:30pm-8:00pm only; not scheduled.
- Office hours will be available during check-in/check-out hours via phone to answer any questions.
- Individual Conference Judging will be in-person on Tuesday, July 19; it will not be scheduled.
- Refer to the Fair Premium Book on the [Youth Exhibitors](#) page on www.danecountyfair.com for more department details.

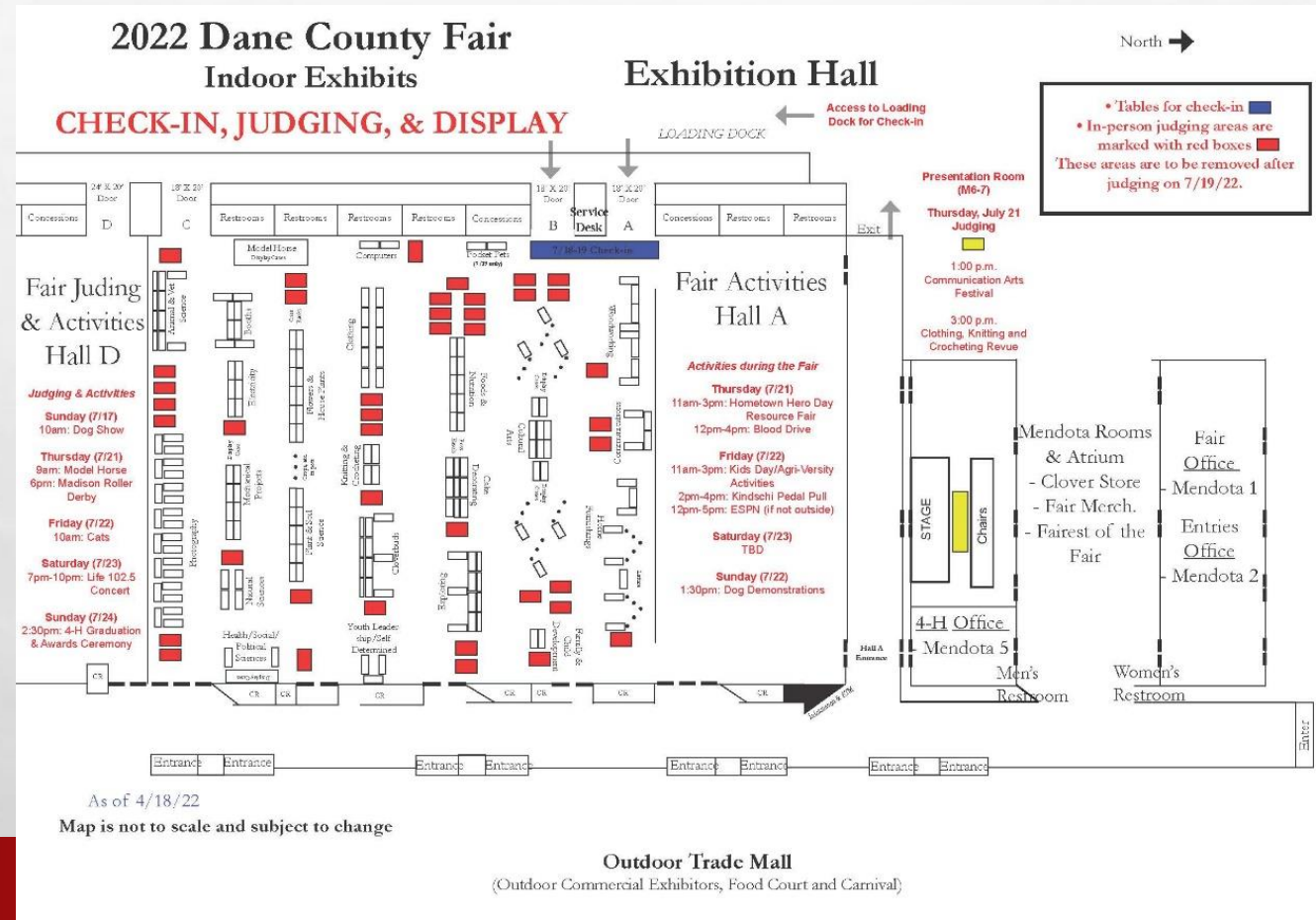
NON-ANIMAL PROJECTS (10-34)

- Shooting Sports:
 - All disciplines except 3D Archery will be held this year.
 - Muzzle Loading is open and is pending successful adult certification instructors training on April 23.
 - Fair Shoot –
 - June 11 at Stoughton Conservation Club (Archery, Shotgun, Air Pistol, .22 Pistol, Muzzle Loading)
 - June 18 at Oregon Sportsman Club (Air Rifle ONLY)
 - ALL participants (included .22 Rifle that held its Fair Shoot on April 16) are required to participate in Class I: Wildlife Ecology Knowledge Challenge on June 11 or June 18; see Premium Book for details.
- Foods & Nutrition will occur on Tuesday, July 19 in Exhibition Hall A.

NON-ANIMAL PROJECTS (10-34)

- Model Horse, Communication Arts Festival, & Clothing, Knitting and Crocheting Revue will occur on Thursday, July 21 during the Fair in the Exhibition Hall.
 - Model Horse – Hall D
 - Communication Arts Festival – Mendota 6-7
 - Clothing, Knitting and Crocheting Revue – Mendota 6-7
 - Clothing, Knitting, Crocheting Revue items are **required** to be checked-in on Tuesday, July 19 and picked up from the Department area on Thursday for the Revue.
- Danish judging remains the same structure and times are noted under Department listings.
- Post judging, projects will be displayed in the Exhibit Halls B & C.

NON-ANIMAL PROJECTS (10-34) MAP



YOUTH EXHIBITOR PROJECT FLOW (NON-ANIMAL)

Entries

- Open 4/20/22
- Close 6/2/22 at 11:59pm
- Late Entries deadline 6/9/22 at 11:59pm
- Packets available June 23

Check-in

- Occurs Tuesday, July 19
- Not scheduled timeslots
- Danish can schedule their check-in for Mon, July 18 via FairEntry
- Refer to Premium Book for Department schedule

Judging

- In-person Individual Conference Judging
- Not scheduled timeslots
- Danish judging remains the same structure
- Refer to Premium Book for Department schedule
- Projects displayed during Fair in Hall B & C

Check-out

- Occurs Sun, July 24 between 6:30pm-8pm only
- Not scheduled timeslots
- Must have claim ticket to collect projects
- Video/Photos available during check-out

OTHER FAIR UPDATES

- Gates will remain open from 9:00am-8:30pm and physically close at 8:30pm. Attendees may only exit between 8:30pm-11:00pm; Fair closes each day at 11:00pm.
 - Gate 3 (between Pavilions) – Youth Exhibitors and Family with wristbands are able to access the grounds after 8:30pm through Gate 3 ONLY. Your Fair wristband must be shown to gain access to the grounds at all times.
 - Gate 3 is moving to an Exhibitor/Wristband ONLY gate. Ticketing at Gate 3 will occur for only 2022. Those without wristbands will have to enter Gate 1 or 2 only starting in 2023.
- **NEW:** The Fair Office will be on the 1st Floor of the Exhibition Hall in Mendota 1. The Entries Department will be next door in Mendota 2.

OTHER FAIR UPDATES CONT.

- Theme Days – Hometown Hero Day (Thu), Kids Day (Fri), Farm Fresh Day (Sat), Family Day (Sun)
 - Thu = Hometown Heroes and guest receive FREE admission, \$3 before 3pm discount, Resource Fair, Blood Drive, Madison Roller Derby; Fri = \$3 before 3pm discount, Kiddie Tractor Pedal Pull, ESPN; Sat = Second Harvest Foodbank – Adopt a Dairy Cow promotion; Sun = Master Showman, Dress-A-Critter, Rockstars in the Ring, and Awards Ceremony.
- Food vendors, carnival, main stage tent, entertainment areas are similar to 2021 with an improved Food Court layout. Entertainment listed below:
 - FMX Freestyle Motocross near the Main Stage Tent
 - Wheels of Agriculture (game show) near Pavilion 1 and the Arena building
 - Music = The NATU Band (Thu), WheelHouse (Fri), Wisconsin Singers (Sat afternoon), Life 102.5 Concert with three artists (Sat), LaMovida contests and bands (Sun)

OTHER FAIR UPDATES CONT.

- Fair Awards Ceremony & 4H Graduation – Sunday, July 24 at 2:30pm in Hall D.
- 4-H Dance – Saturday, July 23 in Pavilion 1 – Mezzanine area starting at 7pm.
- Youth Stage – more details to come.
- Refer to the Fair website (danecountyfair.com) for more details on music, entertainment, food vendors, schedule, etc.

DEPARTMENT NEEDS

Plant & Soil Sciences – Dept. 14
(Chair/Superintendents)

Flowers & House Plants – Dept. 15
(Superintendents)

Shooting Sports – Dept. 16 (Chair)

Photography – Dept. 20
(Superintendents)

Woodworking – Dept. 22
(Chair/Superintendents)

Home Furnishings/Home Environment – Dept. 28
(Superintendents)

Family & Child Development – Dept. 29
(Chair/Superintendents)

Communications – Dept. 31 (Superintendents)

Youth Leadership & Self Determined Projects –
Dept. 33 (Chair/Superintendents)

Health, Social, and Political Sciences – Dept. 34
(Chair/Superintendents)

- We need Chairs/Superintendents for these Departments.
- If you know of anyone who may be willing to assist the Fair in these departments, have them complete the [Chair/Superintendent Application](#) or contact Danielle Ziegler at info@danecountyfair.com.

**SEE YOU AT THE
DANE COUNTY FAIR
JULY 21-24, 2022**

ALLIANT ENERGY CENTER

