



# 2023 DANE COUNTY FAIR

**JULY 20-23, 2023**

**ALLIANT ENERGY CENTER**

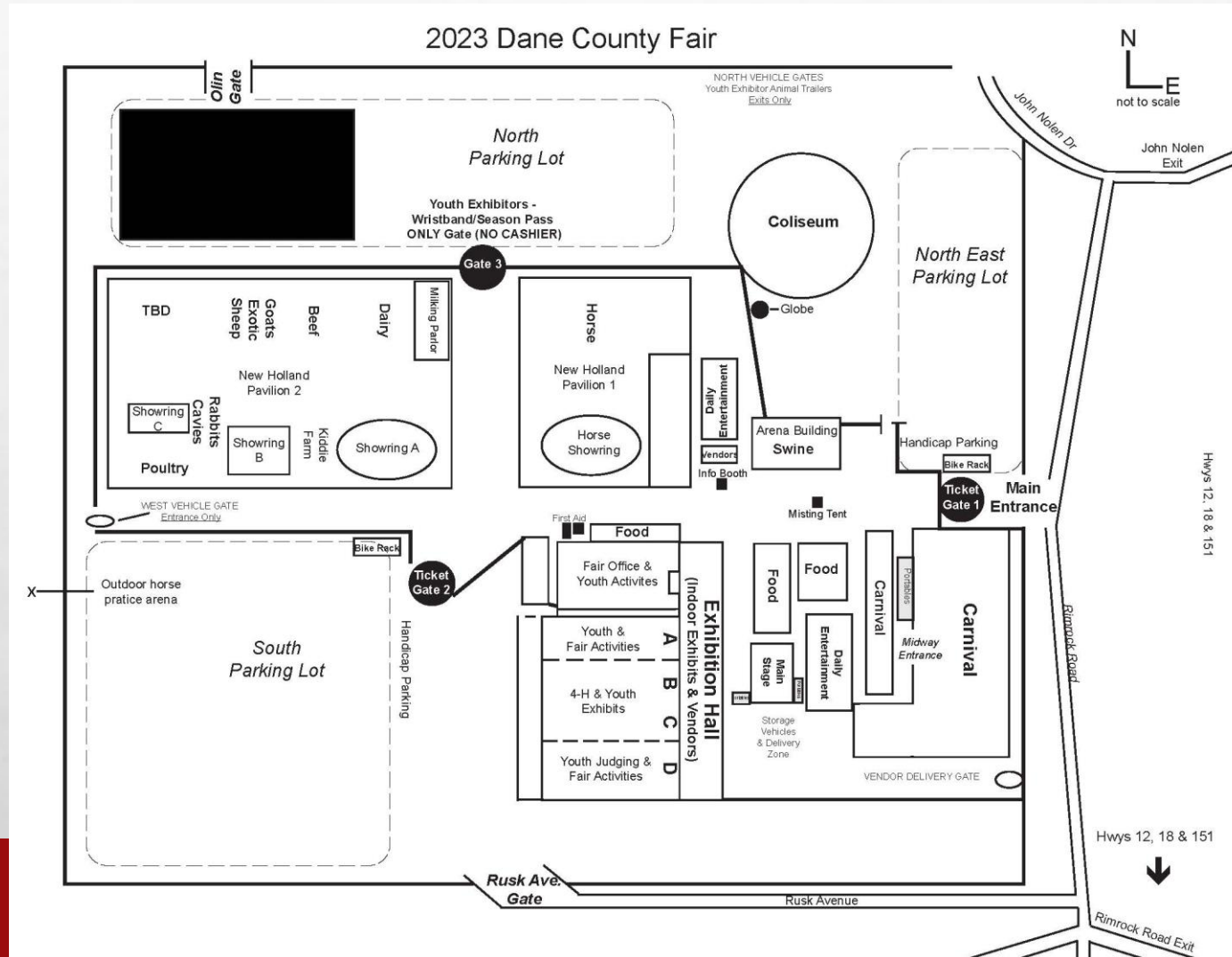
***INFORMATION AS OF MAY 11, 2023***



# OVERVIEW

- Dates: Thursday, July 20 – Sunday, July 23
- Schedule and details will be listed on the Fair's website – [www.danecountyfair.com](http://www.danecountyfair.com)
- Fair Premium Book located on the [Youth Exhibitors](#) page at [www.danecountyfair.com](http://www.danecountyfair.com)
- Any questions can be directed to the Fair Office – [info@danecountyfair.com](mailto:info@danecountyfair.com) or 608-291-2900

# OVERVIEW – GROUNDS MAP



# OVERVIEW – FAIR SHIRT

- Purchase via FairEntry or by order form with check located on the [Fair Merchandise](http://www.danecountyfair.com) page at [www.danecountyfair.com](http://www.danecountyfair.com).
- Shirts will be distributed with packets to Club/Chapter Leaders at pick up on June 26.
- Color will be Dark Pink (Heliconia)
  - \$12/shirt for XS-XL
  - \$14/shirt for 2XL
  - \$15/shirt for 3XL and 4XL





# ENTRIES - FAIRENTRY

- Entry process will remain the same – online through [FairEntry](#).
  - Opens April 19, 2023, Closes June 1, 2023 at 11:59pm.
  - Payments will be processed by credit card via Fair Entry or check (by June 9) mailed directly to the Fair Office (PO Box 287, Oregon, WI 53575).
  - Entries, admission wristbands, shavings/bedding, Fair shirts, privacy panels, etc. all processed through FairEntry.
  - [Guide to Entries](#) & [Exhibitor Resource Guide](#) – Great reference tool!
  - **Late Entries will be accepted for \$25/submission June 2-8, 2023, 11:59pm.** Submission is defined as one or multiple Department/Class/Lot entries in one transaction per exhibitor. Entries will NOT be accepted after 6/8.
- Fair Premium Book & FairEntry link is located on the [Youth Exhibitors](#) page at [www.danecountyfair.com](http://www.danecountyfair.com).
- **ALL FairEntry questions are to be directed to the Fair Entries Department at [fair@wdexpo.com](mailto:fair@wdexpo.com) or 608-960-7910.**

# ENTRIES - FAIRENTRY

- After June 1, Club/Chapter Leaders will receive an email summary of member exhibitors, entries, and fees. **Leaders MUST review and reply to the email with approval by NOON on Friday, June 9.** Late entries will be shared as received (June 2-8).
- Club/Chapter Leader entry tag packet pick-up will be on **June 26 (5pm-7pm) at AEC – Exhibition Hall.**
- **NEW THIS YEAR –**
  - Entry fee is \$8 & ALL entries will receive a season pass wristband to the Fair (including Cloverbuds)
  - All exhibitors MUST enter Showmanship in the species they exhibit at the Fair (except Horse & Pony). Exhibitors who are not entered in showmanship will automatically be entered prior to the Fair. If an exhibitor does not wish to participate in showmanship, they can scratch on-site at the Fair.
  - Market Animals DO NOT have to be eligible for the Meat Animal Sale in order to be eligible for the championship drive.
  - Department 17 – **NEW NAME:** Youth Organizations' Early Childhood Categories per WI DATCP. Exploring and Cloverbuds are still noted under this department as Classes A & B.

# ENTRIES – FAIRENTRY REMINDERS

- Exhibitors MUST select the Club/Chapter you are submitting the entry under (4-H, FFA, etc.)
- Select Exhibitor Entry Fee & Season Wristband (\$8.00) for individual entries – NOT Club Entry (\$0.00)
- Make sure to register ALL entries for EACH EXHIBITOR in the family **BEFORE** clicking SUBMIT.
  - Once submitted, two emails will be received. Only AFTER the 2<sup>nd</sup> email approving entries, can you add additional items or entries. To remove any item or for any questions, contact the Fair Entries Dept. at [fair@wdexpo.com](mailto:fair@wdexpo.com) or 608-960-7910 (not 4-H).
- 01-Fair Orders includes options for additional wristbands, T-shirts, shavings/bedding, etc.
  - Discounted wristband fees IF ordered with entries:
    - Youth Season Wristband (\$7.00) – for youth family members attending the Fair, but NOT exhibiting
    - Adult Season Wristband (\$16.00) – adult family members attending the Fair

# ENTRIES - FAIRENTRY

- Youth Animal Exhibitor Code of Practice – reference and acknowledgement in FairEntry when processing entries. The Code of Practice for all youth and their family members is listed in the Premium Book and on the website. Make sure to thoroughly read the Code of Practice; it touches on some of the following:
  - Treatment of animals
  - Proof of animal ownership; false ownership is illegal.
  - The use of drugs in animals
  - Any violation of the Code of Practice results in a forfeit of premiums and awards, disqualification for the youth exhibitor for the present Fair year, and a minimum one-year suspension from showing livestock at the Dane County Fair for the youth exhibitor and immediate family members and may result in a loss of eligibility for future shows. Possible civil penalties may be imposed by the proper authorities based on evidence provided by the show of exhibitors in violation of the Federal Food, Drug, and Cosmetic act/or the animal mistreatment, neglect and abandonment laws that apply on the local, state, and national levels.



# ANIMAL PROJECTS (1-11, 13)

- Majority of the schedule is similar to 2022; refer to the Premium Book for Department details.
  - Move-in is Wednesday, July 19 from 12:00pm-8:00pm; swine and sheep start at 9:00am.
    - All market animals MUST arrive by 7:00pm.
  - [Showring Schedule](#) – as of 2/17/23
  - Move-out will be on Sunday, July 23 at 6:30pm (tack at 5:30pm).
- Additional animal health regulations will be required for some species; refer to the Premium Book.
- [Education requirements submission](#) deadline is June 15, 2023 via online form. [CLICK HERE](#) to view education offerings and Education Requirement Card for Animals and Horse & Pony (separate cards).
  - **NEW THIS YEAR!** ALL education cards MUST be submitted through the Dane County Fair by June 15. If you have a question about which education sessions are approved for the Fair, contact the Fair Office at [info@danecountyfair.com](mailto:info@danecountyfair.com)

# ANIMAL PROJECTS (1-11, 13)

- Pocket Pets will be held on Tuesday, July 18 for check-in (5:30pm) and judging (6:30pm) in Exhibit Hall B & C and will return home with youth exhibitor post judging.
- Dairy UPDATES:
  - Showmanship Clinic on Thursday, July 20 at 4:00pm.
  - Miss Q is will be on Friday, July 21 at 5:00pm.
- Beef UPDATES:
  - Showmanship Clinic on Saturday, July 22 at 3:00pm.

# ANIMAL PROJECTS (1-11, 13)

- Swine UPDATES:

- Registration is Saturday, April 22 between 9am-11am at 4-H Office.
- Non-terminal show.
- Exhibitors are responsible for transporting swine home/processing plant post Fair and may house their swine in the Arena building on Sunday night to collect on Monday morning by 7:30am.
- Additional health certificates required showing a negative herd test for PRRS and PEDv.

- Sheep UPDATES:

- Market lambs tagged on Saturday, May 6 between 9am-11am at Stoughton Fairgrounds.
- Show is at 2:00pm on Thursday, July 20 in Pavilion 2, Showring B.

# ANIMAL PROJECTS (1-11, 13) CONT.

- Dairy Goat UPDATES:

- YQCA Required as other education requirements will start in 2024

- Poultry UPDATES:

- Pullorum testing will be required.

- Plans for the Meat Animal Sale and Small Animal Market Sale are managed by those respective committees and is independent from the Dane County Fair. Contact them directly with any questions; contact information listed in Premium Book.

- Meat Animal Sale – Friday, July 21 at 6:45pm in Pavilion 2, Showring B
- Small Animal Market Sale – Saturday, July 22 at 7:00pm in Pavilion 2, Showring C



# ANIMAL PROJECTS (1-11, 13) CONT.

- **Master Showman UPDATES:**

- Moves back to 10:00am on Sunday, July 23 in Pavilion 2, Showring B.
- Now seven species instead of five – added Poultry and Rabbits.
- Details are located in the Premium Book and on the website at [www.danecountyfair.com](http://www.danecountyfair.com).

- **Dress-A-Critter:**

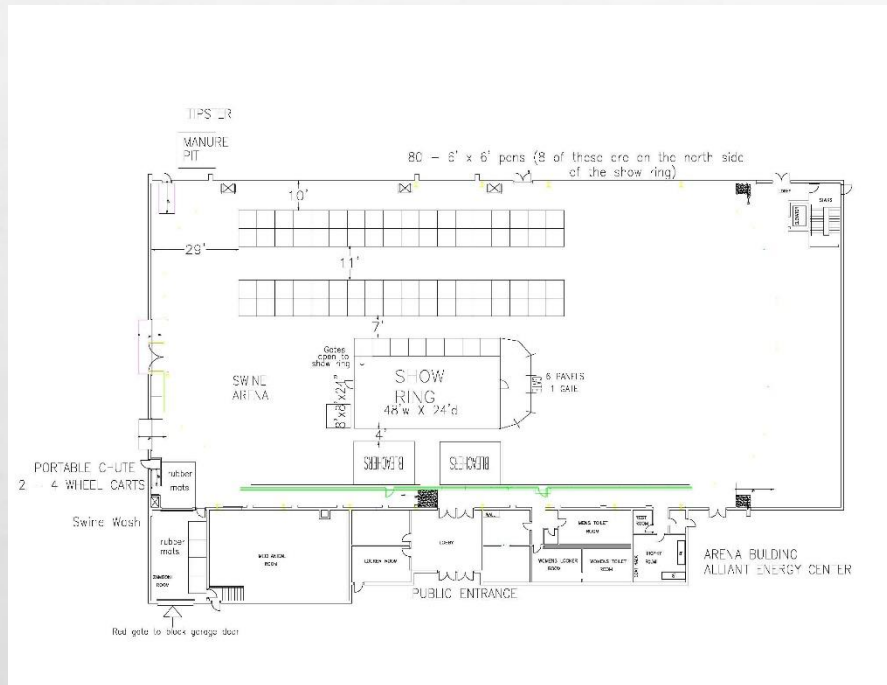
- Sunday, July 23 at 11:30am in Pavilion 2, Showring B.
- 1 entry per club, 1 animal per entry, and up to 4 club members per entry.
- All club entries receive a cash prize.
- Entries are due by 5:00pm on Saturday, July 22; forms will be located in the Fair Office, Mendota 1.
- Details are located in the Premium Book and on the website at [www.danecountyfair.com](http://www.danecountyfair.com).

# ANIMAL PROJECTS (1-11, 13) CONT.

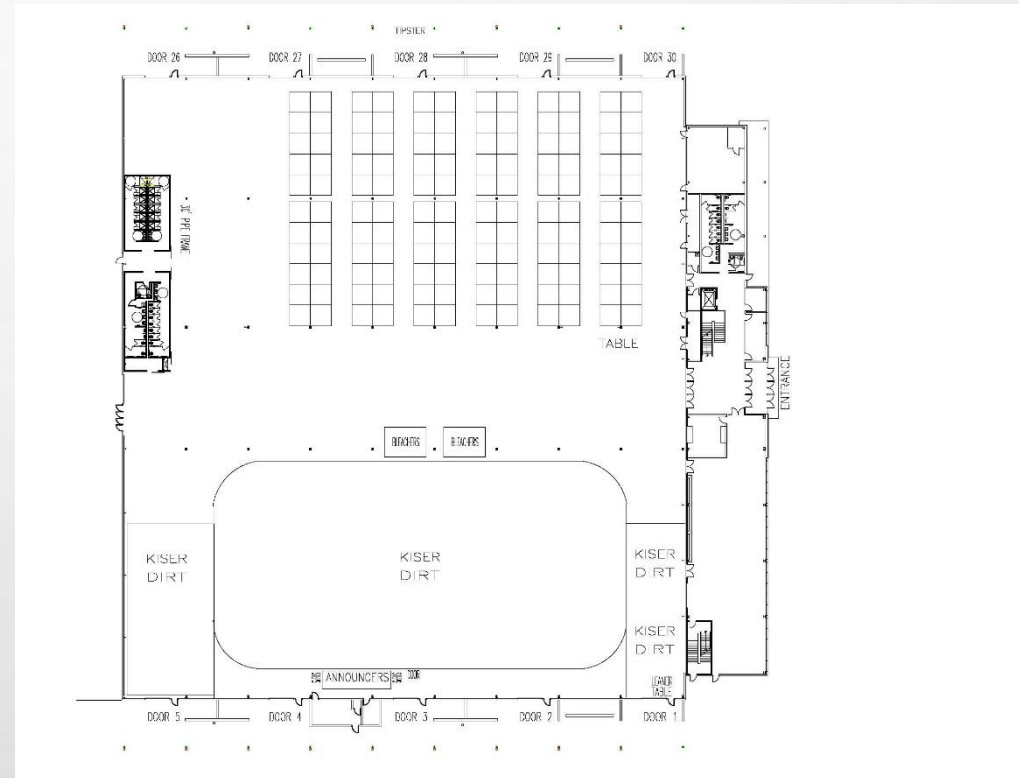
- **Rockstars in the Ring**

- A livestock show for youth with an intellectual disability to have the opportunity to show swine, a rabbit, or sheep.
- Sunday, July 23 at 1:00pm (Mentor training at 10:00am) in Pavilion 2, Showring B.
- Limited to 10 participants + mentors.
- **NEED** Mentors to work with youth participants and education them how to show with their animal (swine, rabbit, sheep).
- Details and forms for Participants and Mentors are located on the [Rockstars in the Ring](https://www.danecountyfair.com) page at [www.danecountyfair.com](https://www.danecountyfair.com). **Deadline to sign-up is June 15.**

# ANIMAL PROJECTS (1-11, 13) CONT.



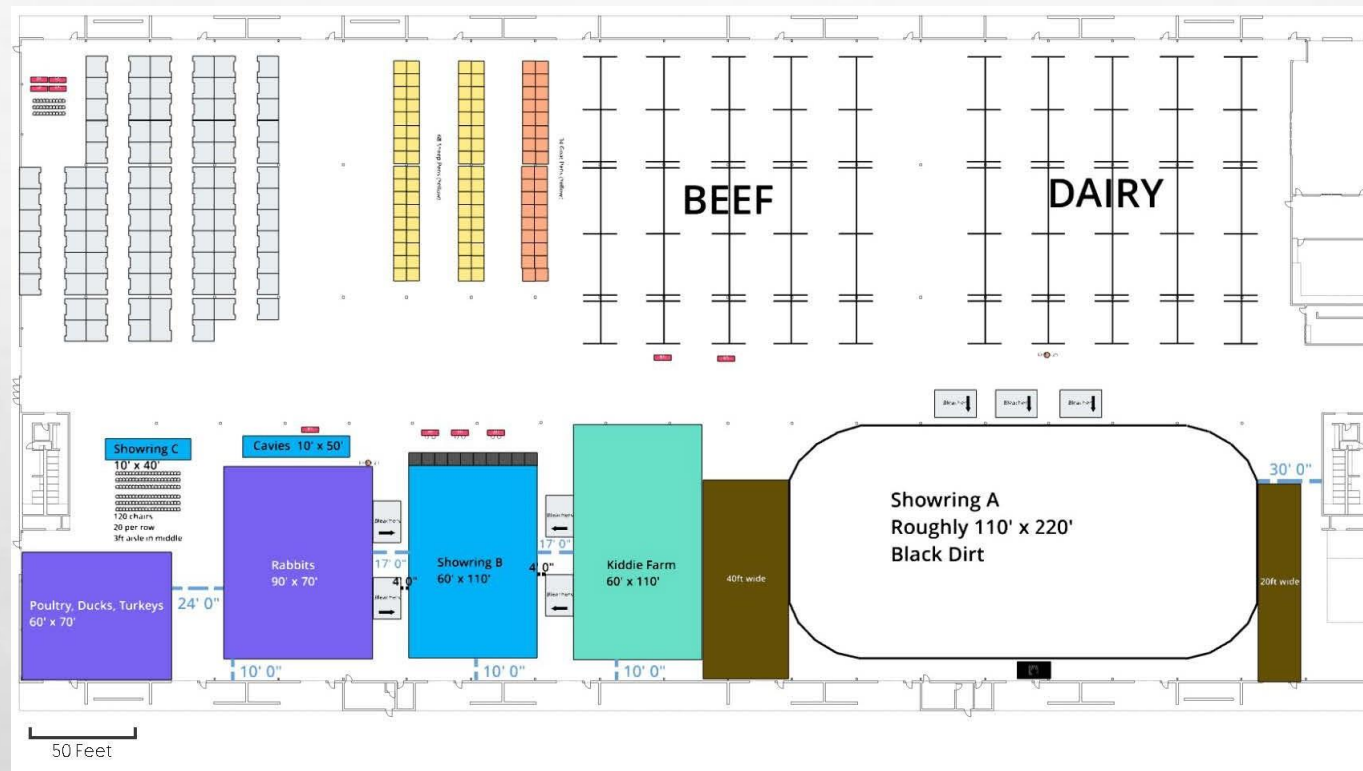
- Arena Building



- Pavilion 1

# ANIMAL PROJECTS (1-11, 13) CONT.

**No Draft Horses –  
area TBD**



● Pavilion 2



# YOUTH EXHIBITOR PROJECT FLOW (ANIMAL)

## Entries

- Open 4/19/23
- Close 6/1/23 at 11:59pm
- Animal Education requirements due by 6/15/23 via online form – [CLICK HERE](#)
- Packets available June 26

## Move-in

- Wednesday, July 19
- Only animal projects will move-in on Wednesday
- Refer to the Department listing in the Premium Book for check-in times

## Judging

- Schedule noted in the Premium Book per Department
- Animals displayed during Fair (July 20-23)

## Move-out

- Sunday, July 23 at 6:30pm (tack 5:30pm)
- No overnight stays of exhibitors or guardians are permitted on Sunday night
- Swine may be left overnight to depart by 7:30am on Monday

# NON-ANIMAL PROJECTS (10-34)

- **NEW!** Foods & Nutrition ONLY will be held Monday, July 17 in Exhibit Hall A; view Department information in Premium Book for check-in and judging times.
- Project check-in & judging will be held Tuesday, July 18 in Exhibit Hall B & C during the times listed for each Department; all but a few departments are 1:00pm-7:00pm.
- Check-out will be held Sunday, July 23 from 6:30pm-8:00pm only; not scheduled.
- Office hours will be available during check-in/check-out hours via phone to answer any questions.
- Refer to the Fair Premium Book on the [Youth Exhibitors](#) page on [www.danecountyfair.com](http://www.danecountyfair.com) for more department details.

# NON-ANIMAL PROJECTS (10-34)

- Shooting Sports:

- All disciplines will be held this year.
- Fair Shoot –
  - May 13 at Stoughton Conservation Club (Air & .22 Rifle)
  - June 22 at Stoughton Conservation Club (Muzzle Loading)
  - July 1 at Stoughton Conservation Club (Archery, 3-D Archery, Shotgun, Air Pistol, and .22 Pistol)
  - ALL participants are required to participate in Class I: Wildlife Ecology Knowledge Challenge on May 13 or July 1; see Premium Book for details.

# NON-ANIMAL PROJECTS (10-34)

- Model Horse, Communication Arts Festival, & Clothing, Knitting and Crocheting Revue will occur in-person on Thursday, July 20 during the Fair in the Exhibition Hall.
  - Model Horse – Hall D
  - Communication Arts Festival and Clothing, Knitting and Crocheting Revue – Mendota 6-7
    - Clothing, Knitting, Crocheting Revue items are **required** to be checked-in on Tuesday, July 18 and picked up from the Department area on Thursday for the Revue.
- Danish judging remains the same structure and times are noted under Department listings.
- Post judging, projects will be displayed in the Exhibit Halls B & C.



# YOUTH EXHIBITOR PROJECT FLOW (NON-ANIMAL)

## Entries

- Open 4/19/23
- Close 6/1/23 at 11:59pm
- Late Entries deadline 6/8/23 at 11:59pm
- Packets available June 26

## Check-in

- Foods & Nutrition on Monday, July 17
- Rest of the Departments is Tuesday, July 18
- Refer to Premium Book for Department schedule

## Judging

- Foods & Nutrition on Monday, July 17
- Rest Tuesday, July 18
- Refer to Premium Book for Department schedule
- Projects displayed during Fair in Hall B & C

## Check-out

- Occurs Sun, July 23 between 6:30pm-8pm only in Halls B & C
- Ex Hall closes at 5:30pm and Doors open at 6:30pm at North end of Ex Hall
- Must have claim ticket to collect projects

# OTHER FAIR UPDATES

- Gates will remain open from 8:00am-8:00pm and physically close at 8:00pm. Attendees may only exit between 8:00pm-11:00pm; Fair closes each day at 11:00pm.
  - Gate 3 (between Pavilions) – Youth Exhibitors and Family with wristbands are able to access the grounds after 8:00pm through Gate 3 ONLY. Your Fair wristband must be shown to gain access to the grounds at all times.
  - Gate 3 is moving to an Exhibitor Wristband/Season Pass ONLY gate. Those without wristbands/season passes must enter Gates 1 or 2 only.
- The Fair Office will be on the 1<sup>st</sup> Floor of the Exhibition Hall in Mendota 1. The Entries Department will be next door in Mendota 2.

# OTHER FAIR UPDATES CONT.

- Food vendors, carnival, main stage tent, entertainment areas are similar to 2022. Entertainment listed below:
  - Paul Bunyan Lumberjack Show near the Main Stage Tent
  - Stingray Encounter near Pavilion 1 and the Arena building
  - Coloring Display (Atrium each day)
  - Magical Bubbles (Friday & Saturday)
  - More music and community acts during the day on the Main Stage
  - Music = Feudin' Hillbillies (Thu), Comedian & Piano Fondue (Fri), Wisconsin Singers (Sat afternoon), Dakota Tamminga (Sat afternoon), Life 102.5 Concert with two artists (Sat), LaMovida contests and bands (Sun)
- Camping – if camping at the DCF, all camping has moved to Willow Island to give DCF more parking space in the North Lot due to CrossFit occupying half of the parking lot.

# OTHER FAIR UPDATES CONT.

- Theme Days – Hometown Hero Day (Thu), Kids Day (Fri), Farm Fresh Day (Sat), Family Day (Sun)
  - Thu = Hometown Heroes and guest receive FREE admission, \$3 before 3pm discount, Resource Fair, Blood Drive, Madison Roller Derby; Fri = \$3 before 3pm discount, Kiddie Tractor Pedal Pull, ESPN; Sat = Second Harvest Foodbank – Adopt a Dairy Cow promotion; Sun = Master Showman, Dress-A-Critter, Rockstars in the Ring, and Awards Ceremony.
- Carnival will be open until 10:30pm each night. Discount wristbands for youth exhibitors on Friday or Saturday from Noon-5:00pm...coupon included with your entry tags.
- Fair Awards Ceremony & 4H Graduation – Sunday, July 23 at 2:30pm in Hall D.
- 4-H Dance – Saturday, July 22 in Pavilion 1 – Mezzanine area starting at 7pm (Enter Gate 2 if members do not have a wristband/pass).
- Refer to the Fair website ([danecountyfair.com](http://danecountyfair.com)) for more details on music, entertainment, food vendors, schedule, etc.



# DEPARTMENT NEEDS

---

Cats – Dept. 13  
(Chair/Superintendents)

Woodworking – Dept. 22  
(Chair/Superintendents)

Plant & Soil Science – Dept. 14  
(Superintendents)

Knitting & Crocheting – Dept. 27  
(Superintendents)

Shooting Sports – Dept. 16  
(Chair)

Home Furnishings/Home Environment – Dept. 28  
(Superintendents)

Photography – Dept. 20  
(Superintendents)

Family & Child Development – Dept. 29  
(Chair/Superintendents)

---

- We need Chairs/Superintendents for these Departments.
- If you know of anyone who may be willing to assist the Fair in these departments, have them complete the [Chair/Superintendent Application](#) or contact Danielle Ziegler at [info@danecountyfair.com](mailto:info@danecountyfair.com).



**SEE YOU AT THE  
DANE COUNTY FAIR  
JULY 20-23, 2023**

**ALLIANT ENERGY CENTER**

