

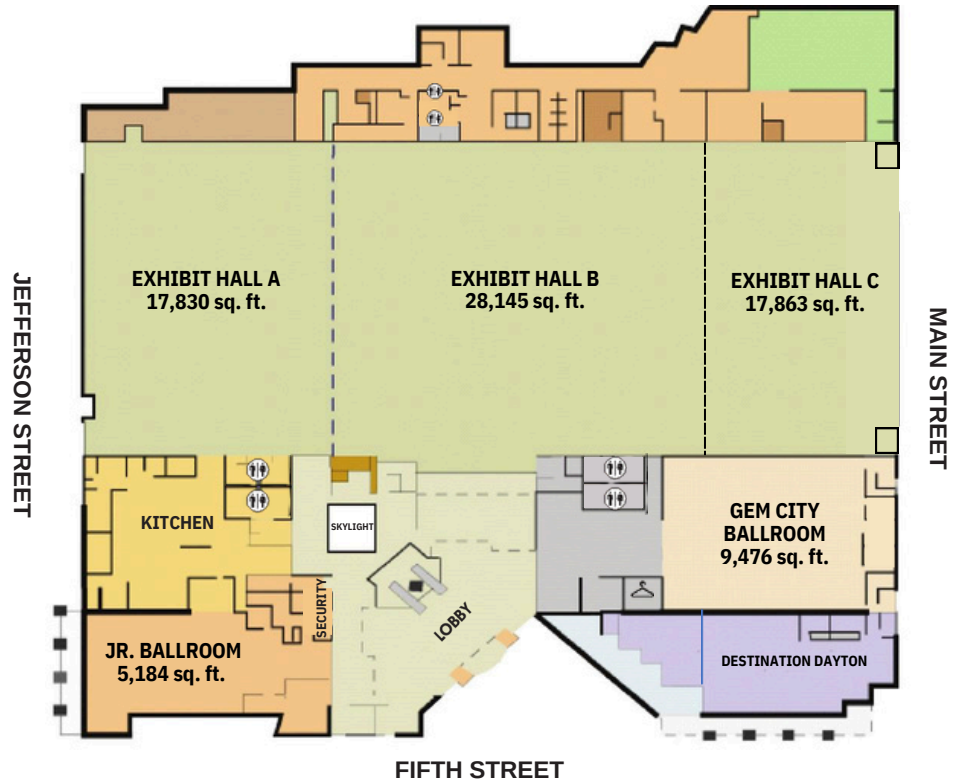


FACILITY MAP

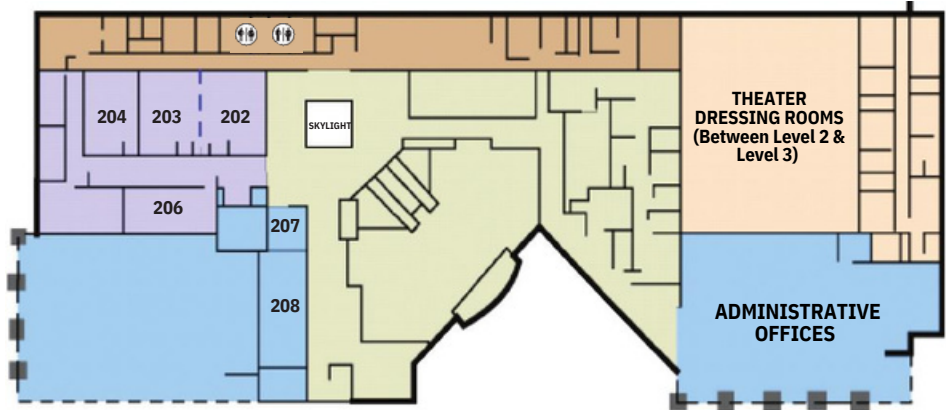
ROOM SPECIFICATIONS

This information supersedes any versions printed before January 1, 2025.
Policies, rules & regulations, rates, and charges noted herein are subject to change without notice.

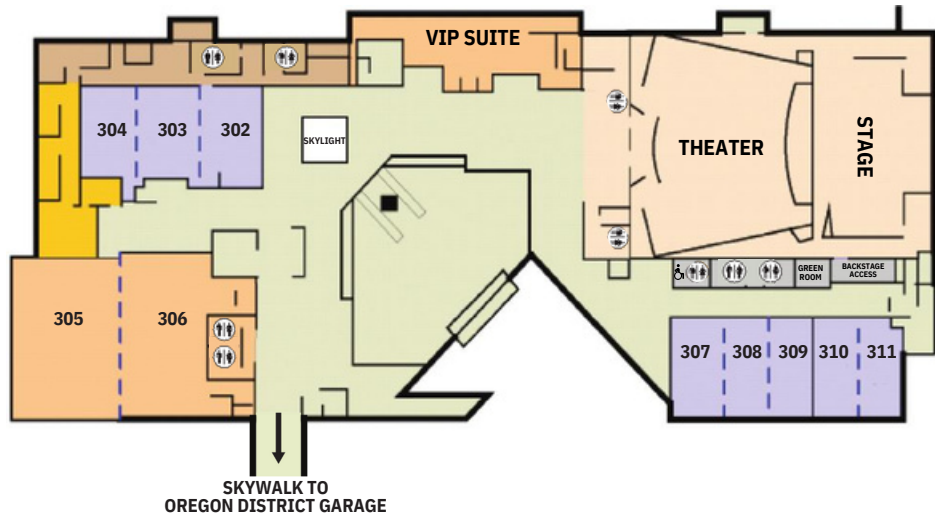
LEVEL 1



LEVEL 2



LEVEL 3



ROOM	INCLUDED AMENITIES/ROOMS	SQUARE FEET	EXHIBITS (10' X 10')	THEATER	CLASSROOM	BANQUET	DIMENSION	CEILING
Exhibit Hall A	Pre-Function Space	17,830	72	1,900	774	844	100' W x 178' L	32'
Exhibit Hall B	Pre-Function Space, Show Office	28,145	132	3,240	1,230	1,430	161' W x 177' L	32'
Exhibit Hall A & B	Pre-Function Space, Show Office	45,975	204	5,140	2,004	2,274	261' W x 177' L	32'
Exhibit Hall C	*	17,863	66	1,710	708	840	103' W x 177' L	32'
Exhibit Hall B & C	Pre-Function Space	46,008	198	4,950	1,938	2,270	264' W x 177' L	32'
Exhibit Hall A & B & C	Pre-Function Space	63,838	270	6,850	2,712	3,114	364' W x 177' L	32'
Gem City Ballroom	Pre-Function Space	9,476	37	700	350	540	90 x 100 (Does not include alcove)	11' 3" (Bulkhead) 16' 10" (Hexagonal Lights)
Junior Ballroom	*	5,220	20	450	250	225	58' W x 90' L	17'
202	*	918	n/a	80	45	40	27' W x 34' L	9'
205	*	918	n/a	80	45	40	27' W x 34' L	9'
202 - 203	*	1,734	n/a	192	96	80	51' W x 34' L	9'
204	*	850	n/a	80	45	40	25' W x 34' L	9'
205	Pre-Set Boardroom for 20							
206	*	741	n/a	64	30	30	19' W x 39' L	9'
207	Pre-Set Boardroom for 12							
208	*	817	n/a	85	30	30	43' W x 19' L	9'
Executive Suite	Lounge Furniture Operable partition between the room and Level 3 pre-function space Wall of full-length windows overlooking the Exhibit Hall	1,850	n/a	n/a	n/a	60	57.5' W x 33' L	8'
302	*	972	n/a	80	45	40	27' W x 36' L	11'
303	*	972	n/a	80	45	40	27' W x 36' L	11'
304	*	972	n/a	80	45	40	27' W x 36' L	11'
302 - 304	Pre-Function Space	2,916	n/a	320	180	168	81' W x 36' L	11'
305	*	3,120	15	375	180	200	48' W x 65' L	17'
306	*	2,535	9	300	100	150	39' W x 65' L	17'
305 - 306	Pre-Function Space	5,655	24	675	250-300	350	87' W x 65' L	17'
307	*	684	n/a	80	40	20	19' W x 36' L	15'
308	*	684	n/a	80	40	20	19' W x 36' L	15'
309	*	684	n/a	80	40	20	19' W x 36' L	15'
307 - 309	*	2,052	n/a	240	120	60	58' W x 36' L	15'
310	*	864	n/a	80	30	48	24' W x 40' L	15'
311	*	800	n/a	80	30	48	21' W x 40' L	15'
310 - 311	*	1,840	n/a	160	60	96	46' W x 40' L	15'
Theater	(6) Dressing Rooms, Green Room	654 Permanent Seats Can accommodate up to an additional 20 seats in the back of the Theater and 50 seats in the orchestra pit Dressing Rooms: 210 - 13.5' x 19' 211 - 13.5' x 8.5' 212 - 13' x 8' 213 - 13.5' x 16' 214 - 13' x 8' 215-216 - 13.5' x 27' Dressing Room Max Occupancies: 210 - 12 people 211 - 6 people 212 - 6 people 213 - 15 people 214 - 6 people 215-216 - 20 people						

* Room capacities are estimated and dependent upon complete event set up needs (buffet, stage, podium, etc.) Please ensure your setup needs are discussed in detail with your Sales Manager prior to renting a space. Your Event Manager will work you after your contract is signed to create room layout(s) that are compliant with fire code.

BASIC DETAILS

- 654 permanent seats
 - Can accommodate up to an additional 20 seats in the back of the Theater and 50 seats in the orchestra pit
- Orchestra pit
- (1) electrical box with (12) 20-AMP plug-ins located backstage for sound system plug-in
- Basic wall outlets located stage left and stage right on front wall
- No storage capabilities underneath stage

STAGE DIMENSIONS

- Working Stage - 48' x 30'
- Proscenium - 87' 6"
- 8' Wing (Stage Right) - 13' 6"
- 5.5' Wing (Stage Left) - 13' 6"
- Fly Rail Trim Height - 20' 6"
- Upstage - 39'

ORCHESTRA PIT

- No electric access directly inside of orchestra pit - You must utilize power strips and/or extension cords to utilize wall outlets flanking either side.
- Can accommodate a max of (6) 6ft. tables or (5) 8ft. tables

DRESSING ROOMS

210

Dimensions: 13.5' x 19'

Max Occupancy: 12 people

211

Dimensions: 13.5' x 8.5'

Max Occupancy: 6

212

Dimensions: 13' x 8'

Max Occupancy: 6

213

Dimensions: 13.5' x 16' (11 Mirrors and 2 sinks)

Max Occupancy: 15

214

Dimensions: 13' x 8' (3 mirrors)

Max Occupancy: 6

215-216

Dimensions: 13.5' x 27'

Max Occupancy: 20

