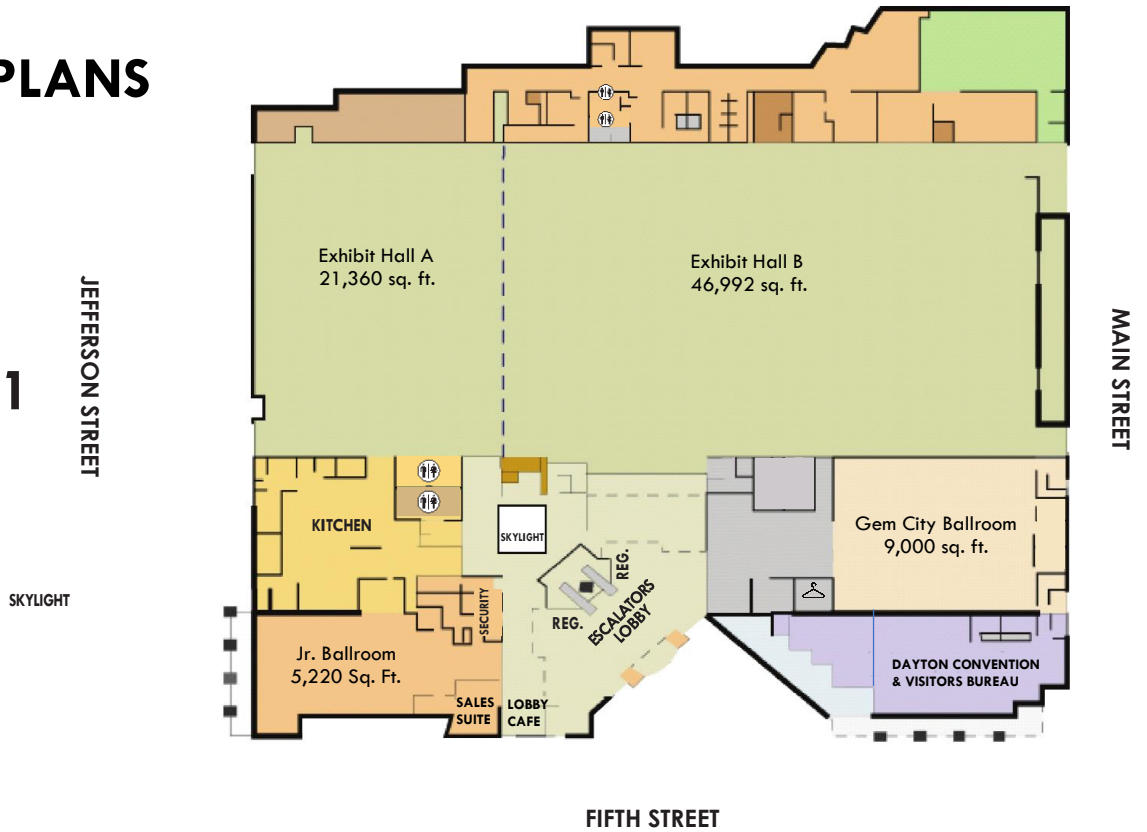


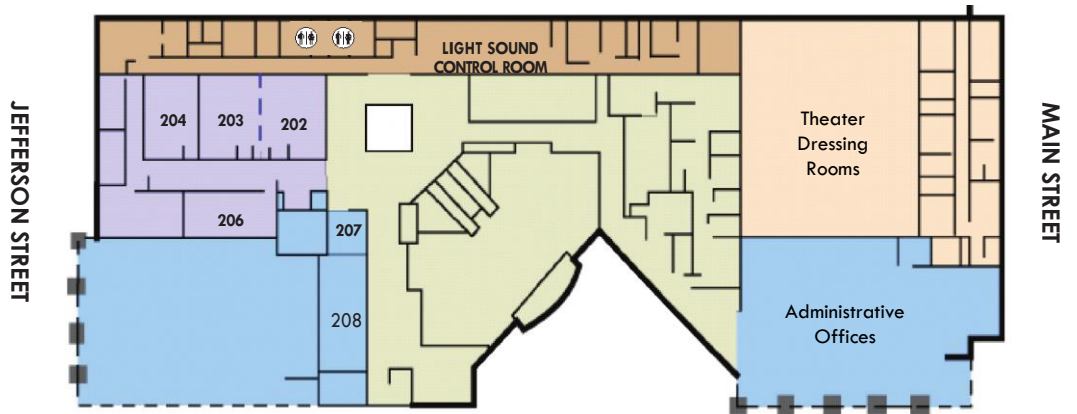


# FLOOR PLANS

## Floor 1



## Floor 2



## Floor 3



# Dayton Convention Center Room Specifications



MEETING ROOM	INCLUDED AMENITIES/ ROOMS	SQUARE FEET	EXHIBITS [10' X 10']	THEATER	CLASSROOM	BANQUET	RECEPTION	DIMENSION	HT
Hall A	•	21,360	97	1900	900	1200	2500 [flow]	120 x 178	32'
Hall B	Show Office, Performer Rooms [2] Registration Counters	46,992	225	4270	2000	2400	5500 [flow]	264 x 178	32'
Hall A/B	Show Office, Performer Rooms (2) Registration Counters	68,352	357	6000	2800	3104	7500 [flow]	384 x 178	32'
Gem City Ballroom	Coatcheck 1B	9,000	37	700	350	540	700 [flow]	90 x 100	16'
Junior Ballroom	•	5,220	20	450	250	225	400 [flow]	58 x 90	17'
202	•	972	•	80	45	40	75	27 x 36	9'
203	•	972	•	80	45	40	75	27 x 36	9'
202-03	•	1,944	•	192	96	80	150	54 x 36	9'
204	•	936	•	80	45	40	75	26 x 36	9'
205	Boardroom for 22 People								
206	•	780	•	64	30	30	75	20 x 39	9'
207	Boardroom for 12 People								
208	•	817	•	85	30	30	75	43 x 19	9'
VIP Lounge Room 301	VIP Lounge with Permanent Lounge Seating Overlooking Exhibit Hall 102 (1197 sq ft)						50 (flow)	21 x 57	8'
302		972		80	45	40	75	27 x 36	11'
303		972		80	45	40	75	27 x 36	11'
304		972		80	45	40	75	27 x 36	11'
302-04		2,916		240	138	160	225	81 x 36	11'
305		3,216	15	300	180	160	300 [flow]	48 x 67	17'
306		2,613	9	250	150	120	250 [flow]	39 x 67	17'
305-06		5,829	25	550	250-300	350	600 [flow]	87 x 67	17'
307	Coatcheck 3B	800		65	30	32	75	20 x 40	15'
308	Coatcheck 3B	800		65	30	32	75	20 x 40	15'
309	Coatcheck 3B	800		65	30	32	75	20 x 40	15'
307-09		2,400		200	120	12	250	60 x 40	15'
310		800		62	30	32	75	20 x 40	15'
311		800		62	30	32	75	20 x 40	15'
310-11		1,600		120	72	80	150	40 x 40	15'
Theatre Room 312	(6) Dressing Rooms Coatcheck 3C	672 Permanent Seats – Can accommodate up to an additional 60 seats if pit seating is used							