



DATES TO REMEMBER

Entry forms due on or before Thursday, August 18, 2022

Saturday, August 27, 2022

Bring crafts, collectibles, photography, posters, student art
9 am till 6 pm to **outside entrance, WING A**

Thursday, Sept 1, 2022

First Culinary Show noon till 1:30 pm

Friday, Sept 2, 2022

Bring 1st Gardening entries 8 am till 10 am

FAIR OPENS: Friday, Sept 2, 2022 4 pm

Veterans receive free admission 4 pm till close

Saturday, Sept 3 at noon Sunday, Sept 4 at noon
Monday, Sept 6 Labor Day at noon

Tuesday, Sept 6, 2022

Delta Fair's Best Chili & Best Cook Contest
Bring entries at 2 pm till 3:30 pm – Judging at 4 pm
Fair opens: 4 pm

Wednesday, Sept 7, 2022

Senior American Day 9 am in WING A

Thursday, Sept 8, 2022

Bring 2nd Gardening Entries 8 am till 10 am
Fair opens 4 pm

Friday, Sept 9, 2022 Fair opens 9 am

4-H, FFA, Schools & Homeschool Day

Saturday, Sept 10, 2022 Fair opens at noon

Delta Fair's Best Cupcake Contest
Delta Fair's Best Pie Contest
King Arthur Flour's Company Cake Contest

Sunday, Sept 11, 2022 Fair opens at noon
First Responders receive free admission all day

Monday, Sept 12, 2022

Pick up entries **at outside entrance, WING A**
noon till 6 pm

Delta Fair & Music Festival 2022

TABLE OF CONTENTS

Premium Guide & Schedule of Contests

	page
Adult Art	3
American Veteran Crafts.....	21
Antiques & Collections.....	4
Baby Photo Contest.....	23
Christmas Trees.....	15
Culinary.....	36
Dolls.....	20
Food Preservation.....	5
Gardening	7
Handwriting.....	14
Holiday decorations.....	16
Knitting/Crocheting/Weaving.....	17
Livestock Schedule.....	47
Junior Beef Heifer Show.....	50
Open Beef Cattle Show.....	51
Junior Breeding Hog Show.....	54
Open Breeding Hog Show.....	55
Junior Market Hog Show.....	56
Poultry Show.....	57
Open Breeding Sheep Show.....	59
Junior Breeding Sheep Show.....	61
Junior Market Lamb Show.....	63
Commercial Ewe Show.....	64
Goat Shows.....	65
Other Crafts.....	20
Photography.....	22
Quilts.....	23
Recycled Art.....	19
Sewing.....	26
Stitchery.....	29
Student Art.....	35
Wood Crafts.....	31
Youth Crafts.....	33

CRAFTS & COLLECTIBLES
Guidelines for Entry

DIRECTOR: Jan Hamilton (901) 487-3075

1. Entry forms for items are due on or before **Thursday, August 18, 2022**. Forms may be faxed to the office at **901 867-7121** or mailed to:

Delta Fair & Music Festival
Attn: Jan Hamilton
PO Box 1327
Cordova, TN 38088

Please send entry forms as **EARLY** as possible to avoid last minute mail or fax problems. To change your address or be added to the list, email information to Jan@Deltafest.com or call (901) 487-3075. Our website www.Deltafest.com is available at any time.

Please do not send forms in .jpg format, we cannot process .jpg forms.

2. **Thank you, exhibitors!** All craft, collectible, photography, poster, handwriting & student art entries are to be brought to the Agricenter, **Wing A, outside entrance**, 7777 Walnut Grove Rd, Memphis, on **Saturday, August 27, from 9 am till 6 pm**. Entries will not be accepted before or after this time. One exhibit per class, per exhibitor.
3. Entry tags will be supplied upon arrival at **A Wing** on Saturday. Tags must be securely attached to each item submitted for competition. If you are entering more than 11 items, please pick up your tags on Friday, Aug 26, after 3 pm and tag the items at home.
4. Committee chairmen, volunteers, and judges may not exhibit in any category they are contributing their volunteer services in. They may compete in other categories. Adult exhibitors are 19 and over and youth exhibitors are 18 and younger. Decisions by the judges are final. No winners will be given over the telephone. **Delta Fair opens at 4 pm, Friday, Sept 2, 2022**, -come see if you won!
5. Items entered for competition must be the work of the exhibitor – unless noted as a group or club. **Entries must not have been exhibited before at Delta Fair.** See individual categories for dates completed. Container grown plants may have been exhibited before. Soiled or stained articles, items with smoke, mothballs, pet, or other odors, will not be accepted. Identical entries **cannot** be entered in multiple categories – each entry must be different. Chairmen and director reserve the right to accept or reject any entry, depending on condition and suitability of the exhibit.
6. Every effort to protect and care for your exhibit will be shown. However, Universal Fairs, ExpoSouth, Delta Fair & Music Festival, owners, directors, employees, and the volunteers in the Crafts, Culinary, and Collectible or livestock area will **not be responsible** for any loss or damage to the entries. Please do not enter heirloom or valuable items. Security is provided in the display area during times the Fair is open to the public.
7. Exhibits will be displayed depending upon the available space. Delta Fair reserves the right to only display ribbon winners. Quilt entries may be displayed on rods or in cases, again depending on the space. Ribbons will be awarded as merit may warrant. Items must be individually worthy.

Entries may NOT be removed before **Monday, September 12, from noon till 6 pm**, at the **outside entrance of Wing A**, at the Agricenter. For multiple entries, please bring boxes. No storage available, **please pick up entries on Monday, Sept. 12.**

8. Premiums will be paid at pickup on Monday, September 12, 2022, noon till 6 pm.

Delta Fair & Music Festival is Everyone's Fair!

Category – ADULT ART – A

CHAIRMAN: Patty Shelton

Entry form due **Thursday, Aug 18, 2022**

Bring entries on Saturday, Aug 27, from 9 am till 6 pm, to **Wing A**, outside entrance. All work must be the work of the exhibitor and cannot have been displayed at any previous fair. **Amateur** exhibitors. Exhibitors who sell their work may not enter. Art must be ready to hang on a hook or it will not be accepted. Maximum size of entry, including frame, 24"x30". Art must have been completed after Sept 1, 2021.

Premiums: 1st - \$50.00 2nd - \$25.00 3rd - \$10.00

Best of Show: Rosette & \$75.00

A 1	Acrylics	A 4	Pen & Ink
A 2	Oil	A 5	Pencil
A 3	Pastel	A 6	Watercolor

Professional Adult Art – AP

If you sell your artwork, you may enter 1 piece in the professional adult art category. **Art must be ready to hang on a hook** or it will not be accepted. Maximum size, including frame: 24"x30". Art must have been completed after Sept 1, 2021.

AP 1 Professional

Premiums: 1st - \$50.00 2nd - \$25.00 3rd - \$10.00



Category – ANTIQUES & COLLECTIONS – AC

Bring entries on Sat, Aug 27

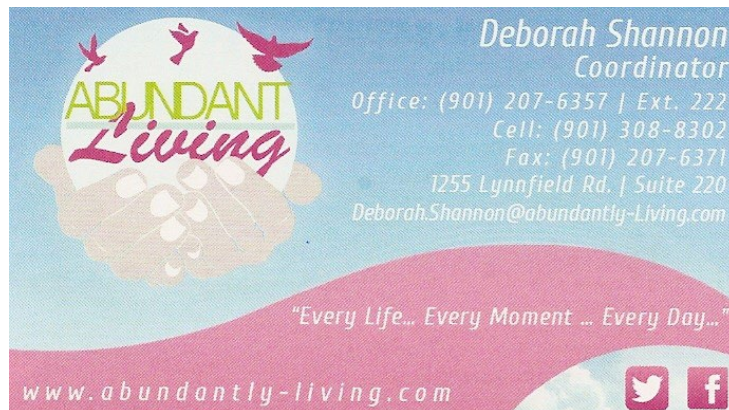
Items entered must be a minimum of 50 years old, with no cracks or visible damage. Attach multiple pieces firmly together. Please do NOT tape wooden items together as tape does not hold. All items are examined during judging. Judging is based on rarity, craftsmanship, beauty, and age. Maximum size of entry is **18"x24"**

Premiums: 1st - \$7.50 2nd - \$5.00 3rd - \$3.00

ANTIQUES (items must be a minimum of 50 years old)

Best of Show – rosette & \$50.00

AC 1	advertising item	AC 18	Military memorabilia
AC 2	bottle	AC 19	other vintage memorabilia
AC 3	calendar	AC 20	other accessory – apparel
AC 4	candle holder	AC 21	other book
AC 5	carnival glass item	AC 22	perfume bottle
AC 6	children's book	AC 23	pitcher
AC 7	child clothing	AC 24	purse
AC 8	china item	AC 25	sewing tool or accessory
AC 9	Coca-Cola item	AC 26	tin container
AC 10	cookbook	AC 27	tintype picture
AC 11	cookie jar (secure lid w/putty)	AC 28	tobacco pipe
AC 12	doll	AC 29	toy with wheels
AC 13	hammered aluminum item	AC 30	toy without wheels
AC 14	handkerchief	AC 31	vase
AC 15	jewelry	AC 32	vintage clothing
AC 16	kitchen tool or utensil	AC 33	vintage photo
AC 17	Memphis memorabilia		



COLLECTIONS

Items may be old or new and must be displayed on a tray or plaque securely.

Collections must have at **least 5 of the items and no more than 7 per class**.

Items judged by uniqueness of items and creativity of display.

Premiums: 1st - \$7.50 2nd - \$5.00 3rd - \$3.00

Best of Show – rosette & \$15.00

AC 34	bells	AC 39	salt & pepper shakers
AC 35	coins	AC 40	sewing items
AC 36	guitar picks	AC 41	spoons
AC 37	match box cars	AC 42	stamps
AC 38	match box covers	AC 43	vinyl's

Category – FOOD PRESERVATION – FP

CHAIRMAN – Louise Williams

Bring all food preservation entries on Saturday, August 27, to Wing A. Products entered in jars must have been canned since January 1, 2022. All entries are displayed in standard ring top jars with rings left on. Fill jars to the neck of the jar, allow ¼ “ headspace for jams, jellies, and preserves. Allow ½” for pickles and fruit and 1” for vegetables. Any item that shows spoilage will be removed from the display. Adult exhibitors only. Recipes are not required for food preservation entries. Judging based on consistency and appearance 65%, selection of product 35%

Premiums: 1st - \$7.50 2nd - \$5.00 3rd - \$3.00

JAMS – items must be in standard half pint jars

Best of Show – rosette & \$25.00

FP 1	any other than listed	FP 4	peach
FP 2	blackberry	FP 5	strawberry
FP 3	blueberry		

JELLIES – items must be in standard half pint jars

Best of Show – rosette & \$25.00

FP 6	any other than listed	FP 10	mint
FP 7	apple	FP 11	muscadine
FP 8	blackberry	FP 12	pepper
FP 9	grape		

PRESERVES – items must be in standard half pint jars

Best of Show – rosette & \$25.00

FP 13	any other than listed	FP 17	pear
FP 14	blackberry	FP 18	plum
FP 15	fig	FP 19	strawberry
FP 16	peach	FP 20	two or more fruits

CANNED FRUITS – items must be in standard quart jars

Best of Show – rosette & \$10.00

FP 21	any other fruit not listed	FP 25	blackberry
FP 22	any pie filling	FP 26	fruit juice
FP 23	apples	FP 27	peaches
FP 24	applesauce	FP 28	pears



Humana

Vinnie Standard
Sales Representative

6515 Poplar Ave.
Suite 108
Memphis, TN 38119

☎ 901 834 5672

☎ 866 254 1218

vstandard@humana.com
Humana.com/vstandard

FOOD PRESERVATION – FP (cont.)

PICKLES & RELISHES – items must be in standard pint jars

Best of Show – rosette & \$10.00

FP 29	any other pickle not listed	FP 37	okra pickle
FP 30	any other relish not listed	FP 38	pepper relish
FP 31	beet pickle	FP 39	pickled pepper – hot
FP 32	bread and butter pickle	FP 40	pickled pepper – sweet
FP 33	chili sauce	FP 41	salsa
FP 34	chow chow relish	FP 42	squash pickle
FP 35	dill pickle	FP 43	sweet pickle
FP 36	green tomato		

CANNED VEGETABLES – items must be in standard quart jars

Best of Show – rosette & \$10.00

FP 44	any vegetable not listed	FP 51	okra
FP 45	beets	FP 52	peas
FP 46	carrots	FP 53	soup mix
FP 47	corn	FP 54	tomato juice
FP 48	green beans	FP 55	tomato sauce
FP 49	kraut	FP 56	tomatoes
FP 50	lima beans		



HONEY – items must be in standard pint jars

Best of Show – rosette & \$10.00

FP 57	extracted honey	FP 58	honey with comb
-------	-----------------	-------	-----------------

*Thank You, Master Gardeners Sponsor
and all the wonderful Volunteers!*



Category – GARDENING – G

CHAIRMAN: Brenda Merritt Entry forms due August 18, 2022

If you think you will enter an exhibit, please send your entry form in by August 18, so that we can have your entry tags prepared when you arrive on the contest day.

If you plan to enter more than ten (10) specimens, please drop by and pick up your entry tags before the entry day, so that we can have your specimens already tagged when you arrive for the contest. Tags for those sending in their entry form will be available as of Saturday, August 27, at WING A.

Only **one** entry per class number is allowed, per exhibitor. In homegrown vegetable/fruits, please bring the number of items for the class that is listed. Example: the three apples required in class G32 count as one entry, but you can't enter two items in G1 foliage plant, you can only enter one (1) specimen in G1.

The show Chairman reserves the right to remove any and all exhibits or parts thereof, if and when deterioration is noted, or ineligibility is determined.

All entries must be grown or created by the exhibitor. Container grown plants **MUST** have been in the possession of the exhibitor for at least **3 months**. Combination plantings and dish gardens must have been growing together and in the exhibitor's possession for at least 6 weeks prior to exhibiting. **Fruits and vegetables must have been grown by the exhibitor.**

Any exhibit found to be infected with any type of insect, will be disqualified and must be picked up immediately by the exhibitor. Please groom (remove dead leaves) and closely examine all entries for insects before bringing them for entry. Water plants thoroughly before being entered. Plants will be watered by volunteers during the 10-day event – unless you make prior arrangements with the show chairman on the day of the entry.

Delta Fair volunteers exercise all due care, but are not responsible for any loss, breakage, or damage to containers or accessories. Exhibits will **NOT** be released earlier than Monday, Sept 12. **Exhibits, ribbons, and premiums must be picked up on Monday, Sept 12, from noon till 6 pm, at the outside entrance of Wing A.**

Guidelines listed on page 1 of this booklet apply to gardening for adults and youth. Youth exhibitors must list age on the entry form. Any questions may be emailed to Jan@Deltafest.com or call 901 487-3075.

10 Day Features – Adult – Gardening Showcase – GS

10 Day Features will be brought to **Wing A**, outside entrance, on **Friday, Sept 2**, from 8 am till 10 am. Exhibits must be finished and entered by 10 am so that judging begins on time. Exhibits will be judged at 11 am and remain on exhibit till Monday, Sept 12. All features in this section **must use natural, fresh cut, dried or living plant materials for decoration**. No silk, plastic or artificial flowers or leaves.
Entry forms due August 18, 2022.

Premiums: 1st - \$10.00 2nd - \$7.50 3rd - \$5.00

Best of Show – rosette & \$25.00

Given by: **Farm Bureau**

- GS 1 **Summer shade** – a summer hat decorated with dried or fresh flowers, ribbons, lace, netting. Will be displayed in garden area.
- GS 2 **Summer's basket** – bring a basket filled with fruits, vegetables, flowers – dried or fresh, decorative ribbon if you choose. Will be displayed on tables.
- GS 3 **Summer tool** – decorate your favorite garden hand tool with dried or fresh flowers, ribbon or paint. Will be displayed laying or standing.
- GS 4 **Summer garden** – portray a magical miniature garden where live plants are the main focus. Size limited to cabinet shelf size (12 " deep) and weight of up to 20 pounds.



**Tennessee Farmers
Insurance Companies**
4050 Germantown Road N.
Bartlett, TN 38133
Office: 901-386-3614
Fax: 901-386-9491

10 Day Features – Youth – Gardening – GY – ages 5 to 18

Bring entries 8 am till 10 am, **Friday, Sept 2**, to outside entrance **WING A**.
Entry forms due Aug 18, 2021.

Premiums: 1st - \$7.50 2nd - \$5.00 3rd - \$3.00

Best of Show – rosette & \$20.00

Given by: **Farm Bureau**

- GY 13 **Garden friend** – create adorable “pet” out of any vegetable, decorate using your imagination.
- GY 14 **Garden plate** – display variety of small garden items, from grape tomatoes to peas in a pod, arranged to create a funny garden face. Glue items onto disposable plate.
- GY 15 **Garden flop** – decorate an old flip flop with dried or fresh plant materials, ribbons, lace – something fun to display on a table.
- GY 16 **Garden bottle** – use pint size jar with lid, fill with variety of flowers, grasses, leaves and add a pretty ribbon.

Container Grown Plants – Adult – G

Bring entries 8 am till 10 am, **Friday, Sept 2**, to outside entrance **WING A**. Container must have been in possession of exhibitor for at least three (3) months before entry date. Dish gardens and planters must be in exhibitor's possession and growing together for at least six (6) weeks. Botanical name would be appreciated on entry form and entry tag. Water plants thoroughly before bringing for entry. Exhibitors **must supply** plant saucers with each entry. Be sure to put name of exhibitor on bottom of saucer. Pot diameter measured from inside of container. Guidelines listed at beginning of category apply. No entries will be released before Monday, Sept 12, noon till 6 pm. Adult entry only.

Premiums: 1st - \$10.00 2nd - \$7.50 3rd - \$5.00
Best of Show – rosette & \$25.00 Given by: **Farm Bureau**

Specimens judged as foliage:

- G 1 Begonia grown for foliage, pot und. 10"
- G 2 Begonia grown for foliage, pot over 10"
- G 3 Cacti or succulent, pot under 10"
- G 4 Cacti or succulent, pot over 10"
- G 5 Fern, any other not listed
- G 6 Fern, Asparagus
- G 7 Fern, Boston
- G 8 Fern, Footed
- G 9 Foliage plant, pot under 7"
- G 10 Foliage plant, pot between 7" & 10"
- G 11 Foliage plant, pot over 10 "
- G 12 Hanging basket, one species-foliage
- G 13 Herb
- G 14 Hosta, pot under 10"
- G 15 Hosta, pot over 10"
- G 16 *Sansevieria trifasciata*
(mother-in-law's tongue)

Specimens judged as blooming:

- G 17 African Violet
- G 18 Begonia, pot under 10 " (in bloom)
- G 19 Begonia, pot over 10 " (in bloom)
- G 20 Flowering plant, pot under 10 "
- G 21 Flowering plant, pot over 10 "
- G 22 Fruited plant
- G 23 Hanging Basket any other species
(must be in bloom)

Multiple Plantings Specimens:

- G 24 Combination pot – any species,
with two or more different species
- G 25 Dish Garden – 5 different species
grown in shallow container
(not a fairy garden)
- G 26 Terrarium garden - 2 or more species
with similar growing habits

HOMEGROWN – Adult Entry – G

Bring entries 8 am till 10 am, **Friday, Sept 2**, Wing A, outside entrance. Exhibitors may enter one entry in each class. All entries **MUST** have been grown by the exhibitor in 2021. **Homegrown entries are not returned to exhibitor.** Please pick up your ribbons & premiums on Monday, Sept 12, from noon till 6 pm.

Premiums: 1st - \$10.00 2nd - \$7.50 3rd - \$5.00
Best of Show – rosette & \$25.00 Given by: **Farm Bureau**

- | | |
|-------------------------------------|--------------------------------------|
| G 30 Any other fruit not listed (3) | G 40 Hot peppers, any other (6) |
| G 31 Any other homegrown | G 41 Jalapeno peppers (6) |
| Vegetable not listed (3) | G 42 Largest sunflower head |
| G 32 Apples (3) | G 43 Lima Beans (10) |
| G 33 Banana peppers (6) | G 44 Okra (6) |
| G 34 Bell peppers (3) | G 45 Onions or Garlic (3) with stems |
| G 35 Cherry or cocktail tomatoes, | G 46 Pears (3) |
| Any color on stem (10) | G 47 Squash, summer (3) |
| G 36 Cucumbers (3) | G 48 Squash, winter (3) |
| G 37 Field peas (10) in pod | G 49 Sweet potatoes (3) |
| G 38 Gourds (3) | G 50 Tomatoes, include 1" stem (3) |
| G 39 Green beans (10) | |



May through October 901 873-3150

CONTAINER GROWN PLANTS – Youth – GY

Bring entries, 8 am till 10 am, **Friday, Sept 2** one entry per class
 Container must have been in possession of exhibitor for at least three (3) months before entry date. Dish gardens and planters must be in exhibitor's possession and growing together for at least six (6) weeks. Youth ages 5 to 18 may enter.

Premiums: 1st - \$7.50 2nd - \$5.00 3rd - \$3.00
 Best of Show - rosette & \$10.00 Given by: **Jones Orchard**

- | | | | |
|------|--------------------|------|---------------|
| GY 1 | cacti or succulent | GY 5 | foliage plant |
| GY 2 | dish garden | GY 6 | fruited plant |
| GY 3 | fern | GY 7 | herb |
| GY 4 | flowering plant | | |

HOMEGROWN – Youth – GY

Bring entries, 8 am till 10 am, **Friday, Sept 2** one entry per class
 Exhibits will be displayed for the 10 days of the Fair. Exhibits showing deterioration will be removed from display. Ribbons and premiums **must be picked up Monday, Sept 12, from noon till 6 pm.** Exhibits must be grown by youth, ages 5 to 18.

Premiums: 1st - \$7.50 2nd - \$5.00 3rd - \$3.00
 Best of Show - rosette & \$10.00 Given by: **Jones Orchard**

- | | | | |
|-------|---|-------|--|
| GY 8 | gourds (3) | GY 11 | vegetable, most unusual (1)
(judged by color/shape) |
| GY 9 | pumpkin – largest
(list weight on entry tag) | GY 12 | watermelon – largest
(list weight on entry tag) |
| GY 10 | sunflower head | | |



Robert Humphrey

901 870-5364

*Independent Insurance
Consultant*

Life, Health, Medicare

FIELD GROWN – G

Bring your entries Friday, Sept 2, 8 am till 10 am, Wing A, outside entrance. You don't have to be a farmer to grow these, **any adult can enter.** Backyard gardens and farm gardens are invited to exhibit. Only one entry per class. All entries to have been grown in the 2022 season by exhibitor. Entries will not be returned – **pick up awards & ribbons Monday, Sept 12, noon till 6 pm, outside entrance Wing A.**

Premiums: 1st - \$10.00 2nd - \$7.50 3rd - \$5.00
Best of Show – rosette & \$50.00 Given by: **Farm Bureau**

- | | | | |
|-------|---|-------|---|
| G 108 | Cantaloupe, largest (1) | G 116 | Soybeans – 1 quart |
| G 109 | Cotton (1 stalk) | G 117 | Soybean plant – 3 plants |
| G 110 | Field Corn (6 ears) | G 118 | Sunflower seeds – 1 quart |
| G 111 | Hybrid Corn (6 ears)
White or yellow | G 119 | Tallest cornstalk - roots
attached in plastic bag |
| G 112 | Indian Corn (6 ears) | G 120 | Tallest sunflower – roots
attached in plastic bag,
MUST have seeds intact |
| G 113 | Pumpkin, best (1) | G 121 | Watermelon (1) largest |
| G 114 | Pumpkin, largest (1)
Judged by circumference | G 122 | Wheat – 1 quart |
| G 115 | Shelled Corn – 1-quart | | |



ARBOREALS - Adult Entry – G SECOND GARDENING CONTEST

Entry forms due Thursday, August 18, 2022 One entry per class
Bring entries 8 am till 10 am, Thursday, Sept 8, WING A, outside entrance, Wing A.
Botanical name would be appreciated on entry form & tag.
Stems are to be no longer than 36 ". Guidelines listed at beginning of category apply.
Entries judged on beauty of the flower, foliage, fruit, or cones. Vases provided by Delta Agribusiness.

Premiums: 1st - \$10.00 2nd - \$7.50 3rd - \$5.00
Best of Show – rosette & \$25.00

- | | | | |
|------|--|------|----------------------|
| G 55 | Berried Holly | G 58 | Flowering Branch |
| G 56 | Callicarpa Americana
(American Beautyberry) | G 59 | Foliage Branch |
| G 57 | Coned Branch (with cones intact) | G 60 | Fruited / Nut Branch |
| | | G 61 | Magnolia Branch |

CUT FLOWERS – Adult Entry – G SECOND GARDENING CONTEST

Entry forms due Thursday, August 18, 2022

Bring entries 8 am till 10 am, Thursday, Sept 8, WING A, outside entrance.

Botanical name would be appreciated on entry form & tag.

Vases provided by Delta Agribusiness. Wedging material should be provided by exhibitor to be used to prop specimens in upright manner for judging.

One entry of one stem per class except for G 74.

Premiums: 1st - \$10.00 2nd - \$7.50 3rd - \$5.00
Best of Show – rosette & \$25.00

G 62	Aster (Daisy)	G 69	Sunflower, miniature size
G 63	Catharanthus	G 70	Zinnia, Asteracea
	Periwinkle, white	G 71	Any other flowering annual
G 64	Catharanthus		not listed
	Periwinkle, any other color	G 72	Any other perennial or
G 65	Hydrangea		bulbous plant not listed
G 66	Petunia, any color, 1 spray	G 73	Flowering vine (in bloom)
G 67	Salvia	G 74	Bouquet of homegrown flowers
G 68	Sedum		

*Licensed Funeral Director,
Embalmer/Preneed Agent
TN, MS & AR*

*Seanna Hamm
Office Manager*

*Mid South
Mortuary Service*

3774 Summer Avenue, Memphis, Tennessee 38122
(901) 458-8575 / (901) 458-5764 Fax
seannah@wtmfa.com
"When You Need Us, We'll Be There"

CUT FOLIAGE – Adult Entry – G

Entry forms due Thursday, August 18, 2022

Bring entries 8 am till 10 am, Thursday, Sept 8

One entry of one stem per class

Botanical name would be appreciated on entry form & tag. Wedging material should be provided by exhibitor to be used to prop specimens in upright manner for judging. Stems are to be no longer than 36 ". Guidelines listed at beginning of category apply. Vases for all entries in this category will be provided by Delta Agribusiness.

Premiums: 1st - \$10.00 2nd - \$7.50 3rd - \$5.00
Best of Show – rosette & \$25.00

G 75	Alocasia, Colocasia	G 80	Foliage vine
	Elephant Ear to natural growth patter	G 81	Hedera (Ivy) 1 branch – if dwarf
G 76	Caladium (if dwarf,		must state dwarf on entry tag
	must state dwarf on entry tag)	G 82	Musa (banana) to natural growth pattern
G 77	Capsicum, ornamental pepper	G 83	Selloum, split leaf Philodendrum
G 78	Cyperus alternifolius	G 84	Selloum cutellariodes, Coleus
	(umbrella plant)	G 85	Any other decorative leaf/grass or
G 79	Equisetum (horsetail)		cut foliage not listed

HERB – Adult Entry – G**SECOND GARDENING CONTEST**

Bring entries 8 am till 10 am, Thursday, Sept 8

One entry per class

Botanical name would be appreciated on entry form & tag. One stem per class

Wedging material should be provided by exhibitor to be used to prop specimens in upright manner for judging. Stems are to be no longer than 20". Guidelines listed at beginning of category apply. Delta Agribusiness will provide all vases.

Premiums:	1 st - \$10.00	2 nd - \$7.50	3 rd - \$5.00
Best of Show – rosette & \$ 25.00			
G 86	any other herb not listed	G 89	Mint
G 87	Basil	G 90	Rosemary
G 88	Lavender	G 91	Sage

ROSES – Adult Entry – G

Bring entries 8 am till 10 am, **Thursday, Sept 8, Wing A** outside entrance.

Botanical name would be appreciated on entry form & tag. One entry per class

Delta Agribusiness will provide all vases.

Premiums:	1 st - \$10.00	2 nd - \$7.50	3 rd - \$5.00
Best of Show – rosette & \$25.00		Given by: Memphis & Dixie Rose Society	

Hybrid Tea: 1 bloom without side buds
Stem length 6" to 12"

Miniature Rose: spray or stem
Stem length 4" to 6"

G 92 any color not listed
 G 93 Mauve blend
 G 94 Orange blend
 G 95 Pink blend
 G 96 Red blend
 G 97 White blend
 G 98 Yellow blend

G 99 Mauve blend
 G 100 Orange blend
 G 101 Pink blend
 G 102 Red blend
 G 103 White blend
 G 104 Yellow blend

Roses, other

One stem per class, stem length 6" to 12"

G 106 Climbing rose, blooms intact
 G 107 Floribunda, one stem, with
 2 or more blooms opened
 G 128 Grandiflora, one stem, must have
 one full bloom, side bulbs allowed
 G 129 Shrub rose, one stem with blooms



<p>The Memphis & Dixie Rose Society meet at Memphis Botanic Garden, please call Bill Dickerson for date & time 901 825-1257</p>
--

HANDWRITING CONTEST – HW

Sponsored by the MEMPHIS CALLIGRAPHY GUILD Entry form due: Aug 18, 2022

Winning entries of 1st, 2nd, and 3rd Place will be displayed along with ribbons.

Premiums: 1st - \$7.50 2nd - \$5.00 3rd - \$3.00

Entries must be delivered to the Delta Fair on: Saturday, August 27 between 9 am and 6 pm, to the outside entrance of Wing A at the Agricenter

Please use the following rules for this contest.

1. Only one (1) entry per person will be accepted. Age categories: 7 and under; 8-12; 13-19; 20 and over. Age is determined by your age on January 1, 2022.
2. Write the designated quote on lined or unlined 8 1/2" x 11" paper with a ballpoint or fountain pen. NO felt tip markers or calligraphy pens. **Only BLACK INK will be accepted.** Use the same pen throughout page. Ages 7 and under may use a pencil. The written quote must fit on the FRONT side of 1 sheet of paper. NO FAXES OR ELECTRONIC SUBMISSIONS WILL BE ACCEPTED.
3. The 7 and under category will use **Manuscript printing**, without joining letters. All other age categories must use **Cursive writing**.
4. On the BACK of the entry, write your name, age category, address, area code and phone number, and an email address. All personal information will be kept confidential and used only to notify winners. If this information is missing or illegible, the entry will be disqualified.
5. Entries will be judged on:
LEGIBILITY: how easy it is to read.
FLUENCY: smoothness, grace and flow of writing.
COMPETENCY: Layout: margins on 4 sides of writing, spacing between letters, words and lines, consistency of letter forms: -size, slant, accuracy of the quote, neatness, spelling and whether or not the rules are followed.

HW 1: QUOTE for Ages 7 and Under:

The quick brown fox jumps over the lazy dog.

HW 2: QUOTE for Ages 8-12:

"Poets don't draw. They unravel their handwriting and then tie it up again, but differently." Jean Cocteau

HW 3: QUOTE for ages 13-19:

"I always write my first draft in longhand, in lined notebooks. I move around the house, sitting where I like, and watch the words spool out in front of me, actually taking a lot of pleasure in the way they look in my strange handwriting on the page." Sue Miller

HANDWRITING CONTEST – HW (cont)

HW 4: QUOTE for Ages 20 and Over:

Handwriting: that action of emotion, of thought, and of decision that has recorded the history of mankind, revealed the genius of invention, and disclosed the inmost depths of the soulful heart. It gives ideas tangible form through written letters, pictographs, symbols, and signs. Handwriting forms a bond across millennia and generations that not only ties us to the thoughts and deeds of our forebears, but also serves as an irrevocable link to our humanity. Neither machines nor technology can replace the contribution or continuing importance of this inexpensive portable skill. Necessary in every age, handwriting remains just as vital to the enduring saga of civilization as our next breath. Michael R.Sull



Category – HOLIDAY DECORATIONS

Holiday Decorations – Christmas Trees – T

CHAIRMAN: Barbara Smith

Bring decorations on Wednesday, Aug 31

Christmas at Delta Fair & Music Festival – decorate a 6' tree, any family-oriented theme. Churches, clubs, families, guilds, schools – any group that would like to decorate a tree are invited to **bring their lights and decorations** to the outside entrance of Wing A on **Wednesday, Aug 31**, from 1 pm till 4 pm. **Entry forms due Thursday, Aug 18, 2022.** Use regular entry form for registration. Only 10 trees are available to decorate – first 10 entry forms will be notified to come decorate their tree.

Premiums: 1st - \$20.00 2nd - \$15.00 3rd - \$10.00

T 1 decorated Christmas Tree



Category – HOLIDAY DECORATIONS – H

CHAIRMAN: Susan Joyner

Bring entries on Sat, Aug 27

Please refer to the entry guidelines in front of premium book. Adult entries only.
All items added to any exhibit **MUST be firmly attached**. Delta Fair Crafts is not responsible for any item lost off of an exhibit. Exhibits may not weigh more than 5 pounds. Finished wreaths cannot be larger than 24 " x 30 " length.

Premiums: 1st - \$7.50 2nd - \$5.00 3rd - \$3.00

CHRISTMAS

Best of Show – rosette & \$25.00

H 1	card holder	H 8	tablecloth or table runner
H 2	door arrangement	H 9	table centerpiece
H 3	mantel arrangement (items must be attached firmly)	H 10	tree ornament (1)
H 4	pillow	H 11	tree skirt
H 5	placemat (1)	H 12	wall hanging (max 36"x36")
H 6	stocking – any fabric	H 13	wreath-purchased & decorated
H 7	stocking – felt	H 14	any Christmas quilted item (max size 36"x36")

OTHER HOLIDAY DECORATIONS (no Christmas items)

Best of Show – rosette & \$25.00

H 15	any other holiday not listed	H 21	pillow – any other holiday
H 16	creative gift wrap – any Occasion – not purchased	H 22	snowman
H 17	Easter	H 23	St. Patrick's Day
H 18	Halloween	H 24	table centerpiece
H 19	holiday wreath – not Christmas	H 25	Thanksgiving
H 20	Independence Day	H 26	Valentine's Day
		H 27	wall hanging(max 36"x36")
		H 28	any other holiday quilted item (max size 36"x36")



ShelfGenie®
EVERYTHING WITHIN REACH
a **neighborly** company

Shelfgenie.com/midsouth-memphis

888-217-1917

Call for your FREE Design Consultation
Custom Glide-Out Shelving

Category – KNITTING, CROCHETING, WEAVING – K

CHAIRMAN: Joann St. Lawrence

Bring entries on Saturday, Aug 27

Entries must be work of exhibitor and have not been entered in prior Fairs. If a category has an item listed to be entered, you cannot enter the same type item in any other item.

Maximum size of any entry 60 " x 60 ". Items must be clean, free of any pet hair, and free of stains and odors.

Premiums: 1st - \$7.50 2nd - \$5.00 3rd - \$3.00

HANDSPUN SKEIN & GARMENT

Blend or wool skeins must contain a minimum of 50 yards.

Cotton skeins must contain a minimum of 25 yards.

Skeins must be 1 ½ to 2 yards in circumference, wound neatly and tied in at least 3 places.

Best of Show – rosette & \$25.00

K 1	blends, dyed or natural	K 4	100% cotton, dyed or natural
K 2	handspun skein, youth	K 5	100% exotic fiber, dyed or natural
K 3	handmade article made from hand spun yard	K 6	100% wool, dyed or natural

KNITTING – any type of yarn may be used

Best of Show – rosette & \$75.00

K 7	any item not listed	K 14	children's sweater
K 8	adult sweater, patterned	K 15	household item – placemat, etc.
K 9	adult sweater, plain	K 16	infant knit set – 2 piece minimum
K 10	afghan, pattern stitches, pictures or decorated	K 17	mittens or gloves
K 11	afghan, plain – 1 or more colors	K 18	purse
K 12	baby afghan	K 19	scarf
K 13	cap or hat	K 20	shawl or wrap
		K 21	socks or footwear



Since our last fair, we lost one of our precious ladies, Mrs. Jane Fennell. She was on our committee since we began back in 2008. Always a smile and a kind word, helpful to everyone who walked by her volunteer table. She is dearly missed by all of us and we are so grateful for the time she spent with us – serving others while serving her Lord, Jesus Christ.

KNITTING, CROCHETING, WEAVING – K (cont.)

FELTING

Items must have been completed by the exhibitor – 1 entry per category

Best of Show – rosette & \$25.00

K 22	accessory felted hat	K 24	any other felted item
K 23	accessory felted purse	K 25	any needle felted item

CROCHETING

Best of Show - \$25.00

K 26	afghan – patterned stitch or decorated	K 35	purse
K 27	afghan – plain – 1 or more colors	K 36	scarf
K 28	any other item not listed	K 37	shawl or wrap
K 29	baby afghan	K 38	socks or footwear
K 30	doily	K 39	sweater – child
K 31	filet crochet	K 40	sweater – adult
K 32	hat or cap	K 41	throw
K 33	infant crocheted set – minimum 2 pieces	K 42	toy
K 34	mittens or gloves		

WEAVING

Best of Show - \$25.00

K 43	loom item
K 44	off-loom item



TBCH LOVE CAP

Caps may be knitted or crocheted in any color or size. All caps will be donated to the **Tennessee Baptist Children's Home – The Ranch**, when the Fair closes.

Best of Show - \$25.00

K 45	cap made by junior exhibitor (18 or younger)	K 47	love cap knitted
K 46	love cap crocheted	K 48	love cap machine knitted

Category – OTHER CRAFTS – OC

CO – CHAIRMEN: Gail Bishop & Sharon Gunlock

Entry forms due on or before Aug 18, 2022. Bring entries on Saturday, Aug 27.

Items in the other category must have been completed since Sept 1, 2021.
All Other Craft entries must be the artwork of the exhibitor.

Premiums: 1st - \$7.50 2nd - \$5.00 3rd - \$3.00

RECYCLED ART

Recycled items made into something new. Maximum size: 12 " x 16 "
Items can be hung for display or set on a shelf. School classes may enter.

Best of Show – rosette & \$25.00

- | | | | |
|------|-----------------------------------|------|---------------------------------|
| OC 1 | item made from recycled cardboard | OC 5 | item made from recycled metal |
| OC 2 | item made from recycled fabric | OC 6 | item made from recycled paper |
| OC 3 | item made from recycled glass | OC 7 | item made from recycled plastic |
| OC 4 | item made from recycled leather | OC 8 | item made from recycled wood |

COUNTRY and/or VICTORIAN CRAFTS

Adult entries only – All Other Craft entries must be the artwork of the exhibitor.

Best of Show – rosette & \$25.00

- | | | | |
|-------|---|-------|--|
| OC 9 | angel, handcrafted | OC 14 | purchased wreath - decorated |
| OC 10 | decorated gourd | OC 15 | small wooden painted item |
| OC 11 | decorated hat | OC 16 | stuffed animal (1) |
| OC 12 | grapevine wreath - decorated | OC 17 | tole/decorative painting |
| OC 12 | purchased bear - decorated | | |
| OC 66 | bridal bouquet – no fresh flowers | OC 68 | origami |
| OC 67 | corsage – any theme
no fresh flowers | OC 69 | flower arrangement –
no fresh flowers |



Don't miss our great livestock shows brought to you by Delta Agribusiness! Hop on the trolley at the Agricenter to the barns – check the daily guide or our website at www.Deltafest.com for each day's events. Thank you, TN Dept of Agriculture, for your support of our livestock & crafts program!

OTHER CRAFTS – OC (cont.)

DOLLS

Items must not be over 33" in height. Adult entries only.

All dolls must be handcrafted by the exhibitor. Purchased dolls are not available for entry.

Best of Show – rosette & \$50.00

- | | | | |
|-------|---|--|---|
| OC 18 | character doll – book character, entertainer, famous American | OC 25 | miniature doll – may be displayed in vignette (total display size 8"x10"x10") |
| OC 19 | child doll – clothing & doll | OC 26 | original doll – hand sculptured |
| OC 20 | crocheted doll – clothing & doll must be crocheted | OC 27 | reproduction doll – replica of any vintage doll |
| OC 21 | female doll – any age | (Dolls displayed in doll accessory classes are not judged) | |
| OC 22 | handcrafted fabric doll | OC 28 | doll accessories – furniture, toys, etc. |
| OC 23 | holiday doll – Santa, pilgrim, etc. | OC 29 | doll accessories – clothing, hats, shoes, etc. |
| OC 24 | male doll – any age | | |

GENERAL OTHER CRAFTS

Items in the other craft category must have been completed since Sept 1, 2021.

Entries must be artwork of the exhibitor. OPEN TO ADULT amateur exhibitors only.

Ceramics, hand-thrown or sculpted pottery must be signed and dated.

Best of Show – rosette & \$25.00

- | | | | |
|-------|--|-------|---|
| OC 30 | acrylic pour, max 14"x14" on canvas | OC 40 | hand thrown or sculpted pottery maximum height 18" must be signed & dated |
| OC 31 | acrylic pour, max 14"x14" on misc. surfaces, such as LP's, receptacle covers, glass, etc. no canvas in this category | OC 41 | jewelry made from recycled item |
| OC 32 | alcohol ink art maximum size 12"x12" | OC 42 | metal jewelry, hand formed – other than wire |
| OC 33 | beaded jewelry (paper, clay, wire, etc.) | OC 43 | metal/wire craft – no beading |
| OC 34 | burlap art (no wreaths) max 26"x26" | OC 44 | mixed media art (max 16"x16") |
| OC 35 | button art, max size 26"x26" | OC 45 | mosaic art (may be 3 dimensional) max size 14" x14" |
| OC 36 | charcoal/pencil/marker/pastel art must be mounted or matted securely with hanger on back, max 11"x14" | OC 46 | old book art (art made from old book) |
| OC 37 | dying with Sharpie markers and alcohol, max size 12"x12" | OC 47 | painted rock max size 7"x7" |
| OC 38 | glass beaded jewelry | OC 48 | paper folded or origami greeting card maximum size 5"x7" |
| OC 39 | greeting card (max size 5"x7") Pastel, watercolor, colored pencil | OC 49 | photo transfer art |
| | | OC 50 | scrapbook (max size 16"x20") |
| | | OC 51 | scrapbook greeting card – old greeting cards made into new (max 5"x7") |
| | | OC 52 | wine bottle, bejeweled, painted, etc. |
| | | OC 53 | wire jewelry, no beading |
| | | OC 54 | wire wrapped jewelry |

OTHER CRAFTS – OC (cont.)

RETIREMENT CRAFTS

Retirement crafts are open to anyone 60 years of age and over.

Best of Show – rosette & \$25.00

OC 55 decorated pillow

OC 56 handmade greeting card

OC 57 jewelry – any type

OC 58 plastic canvas

OC 59 stuffed toy

OC 60 wall hanging

STAINED GLASS

All entries must have been created by the exhibitor since Sept 1, 2021. Adult entries only.

Best of Show – rosette & \$25.00

OC 62 stained glass not over 18"

OC 63 stained glass not over 24"

OC 64 stained glass not over 36"



AMERICAN VETERAN CRAFTS

Open to all veterans. Please submit entry form by Thursday, Aug 18. Items may have been made any time but cannot have been exhibited at any previous Fair. **Bring items for entry on Saturday, Aug 27 from 9 am till 6 pm**, to Agricenter, **outside entrance, Wing A**. Items other than knitted, crocheted, or quilted cannot be larger than 24" x 24".

Best of Show – rosette & \$50.00

OC 74 any item made of glass

OC 75 any item knitted or crocheted

OC 76 any item made of leather

OC 77 any item made of metal

OC 78 any item quilted

OC 79 any item sewn or knotted

OC 80 any item made of wood

Category – PHOTOGRAPHY – P

CHAIRMAN: Susan Boyd

Entry form due on or before Thursday, August 18, 2022

Only 1 entry per class

Bring entries to Agricenter, **outside entrance only, Wing A**, on Saturday, August 27, 9 am till 6 pm. Entry tags supplied upon arrival.

All photography must be completed since September 1, 2021, and be the work of the exhibitor. All guidelines on page 1 apply to photography. Print must be **10" width x 8" height** and must be mounted or matted, securely on 14" x 11" mat board, of any color. **No frames, foam core or double mats** will be accepted. Place name and address on right top corner on the back of the mat board. **Amateur entries only.** If you do photography for weddings or other paid activities, you are not considered an amateur. Photography must be suitable for family exhibit. Director reserves the right to disqualify any print deemed unacceptable.

Premiums: 1st - \$25.00 2nd - \$15.00 3rd - \$10.00
Best of Show – rosette & \$50.00 (1 in color and 1 in black & white)

Black & White

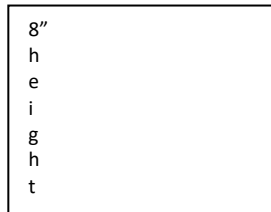
- P 1 Animal(s) wild, no people
- P 2 Birds or insects
- P 3 Flowers or landscapes
- P 4 People – 2 or more
- P 5 Person – over 4 years old
- P 6 Pet(s) no people
- P 7 Scenic – buildings, religious symbols, waterscapes, weather
- P 8 Still life

Color

- P 9 Animal(s) wild, no people
- P 10 Birds or insects
- P 11 Flowers or landscapes
- P 12 People – 2 or more
- P 13 Person – over 4 years old
- P 14 Pet(s) no people
- P 15 Scenic – buildings, religious symbols, waterscapes, weather
- P 16 Still life

Only photos submitted in correct layout will be accepted. We are sorry for any confusion this may have caused, but we have to use our space for the best layout, so we can allow everyone to enter the photography contest.

width of photo 10 "



Thank You, Delta Fair Craft

DEMONSTRATORS!

**There is always something fun to
see in the Delta Fair Crafts area.**

PHOTOGRAPHY (cont.)

Baby Photo Contest

Bring entries Saturday, August 27

Pictures must have been taken since Sept 1, 2021.

Entry form due on or before Thursday, August 18, 2022

All entries must be 8 " width x 10 " height, **portrait display.**

Do not mount pictures to anything. Photos will be judged on personality and appeal.

List parent(s) name, address, phone number, child's name, age at time of photo and birthday on back of photo, upper right hand corner. **Amateur entries only** – no commercial prints.

Premiums: 1st - \$7.50 2nd - \$5.00 3rd - \$3.00
Best of Show – rosette & \$25.00

B 1	Girl under 6 months	B 8	Boy 2 years to 3 years
B 2	Boy under 6 months	B 9	Girl 3 years to 4 years
B 3	Girl 6 months to 1 year	B 10	Boy 3 years to 4 years
B 4	Boy 6 months to 1 year	B 11	Boy/Girl twins to 4 years
B 5	Girl 1 year to 2 years	B 12	Girl twins to 4 years
B 6	Boy 1 year to 2 years	B 13	Boy twins to 4 years
B 7	Girl 2 years to 3 years	B 14	Triplets or more



Category – QUILTS – Q

CHAIRMAN: Nancy McDonough

Bring entries on Sat, Aug 27

Entry form due on or before Thursday, August 18, 2022

Exhibitors may enter one quilt per class. Please refer to the guidelines for Entry listed at the front of the premium book. **Quilts must be clean, free of any pet hair, and free of stains and odors.** Any name and/or label on front or back of quilt must be totally covered with a temporary fabric label either slip stitched or safely pinned securely. All entries must have three layers, top, batting and backing, which are secured with a pattern of stitches sewn by hand, stationary (domestic) or moveable machine or knot tied. No paper, tape, or straight pins please. Items entered previously at Delta Fair cannot be entered again. The Chairman reserves the right to change classification or to disqualify any entry.

Premiums: 1st - \$7.50 2nd – \$5.00 3rd – \$3.00

QUILTS – Q (cont.)

TBCH QUILT CONTEST – twin size only (72" x 96")

Quilts will be donated to the **Tennessee Baptist Children's Home – The Ranch**, at the close of Delta Fair. Only quilts entered in the TBCH category are donated.

Q 1 Any technique

MINIATURE – not to exceed 18" on any side. Must be a scaled down pattern of a full sized quilt. Individual pieces and motifs should not exceed 1 inch. Quilting may be hand, machine or both.

Best of Show – rosette & \$35.00

Given by: **Uncommon Threads**

Q 2 appliqué

Q 3 pieced

CRIB – minimum of 36", maximum of 60" any side. Should be pieced to portray a theme appropriate for a child's bed. No wall quilts accepted in this category.

Best of Show – rosette & \$35.00

Given by: **Uncommon Threads**

Q 4 hand construction and quilting

Q 5 machine construction and quilting

Q 6 mixed technique – construction, embellishment and quilting

SMALL WALL QUILTS – minimum of 18", maximum 36" any side

Best of Show – rosette & \$35.00

Given by: **Uncommon Threads**

Q 7 appliqué – hand or machine quilted

Q 8 pieced – hand or machine quilted

Q 9 pictorial – any technique representing a person, animal, bird or landscape



Meetings held fourth Tuesday at 6:15 pm at Germantown United Methodist Church, 2331 South Germantown Road, Germantown, TN

QUILTS – Q (cont.)

LARGE WALL QUILTS – minimum 37“, maximum 60“ on any side

Best of Show – rosette & \$35.00

Given by: **Cotton Patchers Quilt Guild**

- Q 10 appliqué – hand or machine quilted
- Q 11 pieced – hand or machine quilted
- Q 12 pictorial – any technique representing a person, animal, bird or landscape
- Q 13 modern – minimalist or asymmetrical style. Graphic designs with unusual block placement, negative space and no borders

BED SIZED QUILTS – 48“ to 90“ wide to 75“ to 108“ wide

Best of Show – rosette & \$35.00

Given by: **Cotton Patchers Quilt Guild**

- Q 14 hand construction and quilting
- Q 15 machine construction and quilting
- Q 16 mixed technique – construction, embellishment and quilting
- Q 17 modern – minimalist or asymmetrical style. Graphic designs with unusual block placement, negative space and no borders

SPECIAL – any item that does not fit in one of previous categories.

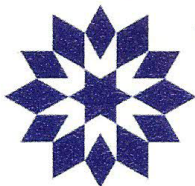
Size: minimum 24 “ to 80 “ on any side. NOTE: You may not enter a quilt in one of these categories if it fits into any of the categories listed previously in which you have already entered a quilt.

Best of Show – rosette & \$50.00

Given by: **Cotton Patchers Quilt Guild**

- Q 18 hand pieced or appliqué and hand quilted
- Q 19 domestic or stationary machine quilted (item is moved under the needle of the machine which is located on or attached in or to a table or cabinet)
- Q 20 moveable machine quilted – quilt is held stationary in a frame and the machine is moved over the surface of the quilt layers
- Q 21 art quilt – original concept or idea not using traditional patterns or kits. May contain any media including but not limited to paint, specialty fabrics and embellishments such as beads, feathers, metallics, etc.
- Q 22 non-traditional construction including but not limited to crazy quilts, cathedral window, yo-yo, sashiko, etc.
- Q 23 table runner, totally constructed by exhibitor, no needlework allowed, must be quilted
- Q 24 time span – vintage or antique tops or blocks, used in new construction and quilted within the last decade
- Q 25 vintage – at least 50 years old

Memphis Cotton Patchers Quilt Guild



1st and 3rd Thursdays, 10AM - 3PM

Creativity
Friendship
Community

Shady Grove Presbyterian Church
5530 Shady Grove Rd (at Yates Rd)
Memphis TN 38120

Sandy 901 218-1490
Patty 901 682-5170

QUILTS – Q (cont.)

GRAND BEST OF SHOW QUILT

of Show – rosette & \$75.00

Given by: **Millington Quilters Guild**

The Grand Best of Show Quilt is chosen from the Best of Show winners.



Category – SEWING – S

CHAIRMAN: Diane Rosloniec

Bring entries on Sat, Aug 27

Entry form due on or before Thursday, August 18, 2022

Entries must be work of the exhibitor. Open to adult amateur exhibitors only. Please cover any personal name tag in the garment. Entries must be **clean, pressed, and stain free**, and on a clothes hanger. All work must be on original not store bought garments. Entries cannot have been entered in prior Fairs. Judging based on: workmanship 50%, originality 50%

Premiums: 1st - \$7.50 2nd - \$5.00 3rd - \$3.00

CHILDREN'S CLOTHING

Garments may be hand or machine constructed using new fabrics.

Open to adult amateur exhibitors only.

Best of Show – rosette & \$25.00

Given by: **American Sewing Guild**

S 1 appliquéd garment – boy or girl
S 2 casual wear – boy or girl
S 3 Christening gown – boy or girl
S 4 costume
S 5 dress – casual

S 6 dress – fancy
S 7 infant wear – boy or girl
S 8 playwear – boy or girl
S 9 sleepwear
S 10 toddler wear – boy or girl

SEWING – S (cont.)

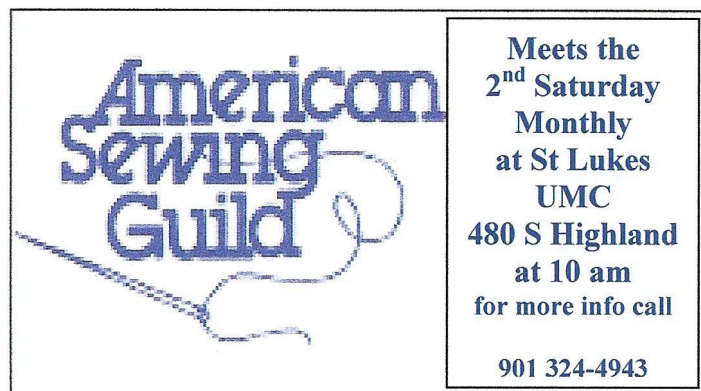
ADULT CLOTHING

Garment may be hand or machine constructed using new fabrics.
Open to adult amateur exhibitors only.

Best of Show – rosette & \$25.00

Given by: **American Sewing Guild**

- | | | | |
|------|--------------------------|------|----------------------------|
| S 11 | costume | S 15 | suit – women's |
| S 12 | jacket or coat (lined) | S 16 | suit – men's |
| S 13 | jacket or coat (unlined) | S 17 | woman's dress (no suits) |
| S 14 | other sewing | S 18 | woman's party/formal dress |



FRENCH HEIRLOOM SEWING

Heirloom quality laces only – no craft laces.
Hand embroidery can be added to any item listed in this category.

Best of Show – rosette & \$25.00

Given by: **A Frayed Knot**

- | | | | |
|------|---|------|---|
| S 19 | adult or child item – all hand work | S 23 | Christening garment – machine or combined technique |
| S 20 | adult or child item – machine or combined technique | S 24 | day gown |
| S 21 | bonnet | S 25 | hand shadow embroidery |
| S 22 | Christening garment – combined technique | S 26 | Layette(min. 3 items – bib, bonnet, blanket, diaper shirt or cover, slip) |

SEWING – S (cont.)

OTHER SEWING

Items must be sewn, not quilted, knitted, felted, or embroidered.
Open to adult amateur exhibitors only.

Best of Show – rosette & \$25.00

Given by: **A Frayed Knot**

S 27	any other accessory belt, collar, scarf	S 33	pillow (max size 16"x16')
S 28	apron	S 34	pillowcase
S 29	decorated vest (vest may be purchased)	S 35	pin cushion (must be handcrafted)
S 30	face covering (mask)	S 36	placemat
S 31	first garment	S 37	purse
S 32	pet clothing	S 38	table runner

SMOCKING

Best of Show – rosette & \$25.00

Given by: **A Frayed Knot**

S 39	any holiday garment	S 46	girl's fancy occasion dress
S 40	bonnet	S 47	girl's geometric dress
S 41	boy's button-on pants	S 48	girl's picture dress
S 42	boy's cap or hat	S 49	infant wear – geometric
S 43	children's play romper	S 50	infant wear – picture
S 44	Christmas ornament	S 51	mixed technique sewing
S 45	day gown		



Category – STITCHERY – ST

CHAIRMAN: Becky McCoy

Bring entries on Sat, Aug 27

Entry form due on or before Thursday, August 18, 2022

Entries must be work of the exhibitor. Open to **adult** exhibitors only.

All entries must be clean and completed within the last three (3) years.

Stitchery pictures are to be framed with fixtures on back, ready to hang.

Judging is based on stitching, workmanship, and technique.

Previously submitted items will not be accepted.

Pictures are to be **less than 36 "**, including mat and frame.

Premiums: 1st – \$7.50 2nd - \$5.00 3rd - \$3.00

COUNTED CROSS STITCH

Best of Show – rosette & \$25.00

Given by: **Stitchers, Inc.**

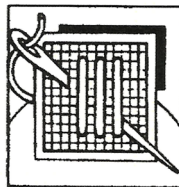
ST 1 animal
ST 2 Christmas ornament
ST 3 Christmas pillow
ST 4 Christmas stocking
ST 5 clothing article with cross stitch
 as main focus of item
ST 6 floral
ST 7 Halloween
ST 8 July 4th and/or Patriotic
ST 9 misc. cross stitch item, not listed

ST 10 other holiday, not listed
ST 11 purse or another accessory with
 cross stitch as main focus
ST 12 religious
ST 13 sampler*
ST 14 scenery
ST 15 St. Patrick's Day
ST 16 stand up (stuffed)
ST 17 Thanksgiving
ST 18 Valentine's Day

* A sampler is defined as a decorative piece of needlework typically having letters, alphabets, verses, and/or sayings.

Stitchersinc@bellsouth.net
www.stitchersinc.com

Stitchers, Inc.
"a needlework shoppe"



5498 Poplar Ave. Ste. 4
Memphis, TN 38119
901-681-9276

M - Sat 10-5:30
Like us on Facebook!

STITCHERY – ST (cont.)

NEEDLEPOINT

All needlepoint exhibits must contain needlework as the focal point. Stitchery guidelines apply to needlepoint entries.

Best of Show – rosette & \$25.00

Given by: **Stitchers, Inc.**

- | | | | |
|-------|---|-------|---------------------------|
| ST 19 | accessory – belt, bag, purse | ST 24 | jewelry – needlepoint |
| ST 20 | any other item, not listed | | must be the main focus |
| ST 21 | Christmas ornament | ST 25 | novice needlepoint item |
| ST 22 | Christmas Stocking | ST 26 | other holiday, not listed |
| ST 23 | collection of small needlepoint items (total display no larger than 12" x 12" | ST 27 | pillow |
| | | ST 28 | stand up |



OTHER NEEDLECRAFT

All needle craft exhibits must contain needlework as the focal point.
Open to adult exhibitors only. Stitchery guidelines apply to needlecraft entries.

Best of Show – rosette & \$25.00

Given by: **Stitchers, Inc.**

- | | | | |
|-------|--|-------|---|
| ST 29 | candle wicking – any item | ST 36 | tablecloth with hand stitching – crewel, embroidery, cross stitch |
| ST 30 | crewel embroidery | | |
| ST 31 | guest towel | ST 37 | table runner, hand stitching – crewel, embroidery, cross stitch |
| ST 32 | hand embroidery – any item not listed – no machine stitching | ST 38 | tatting – any item |
| ST 33 | napkin ring (1) | ST 39 | wall hanging – no frame |
| ST 34 | pillowcase | | crewel, embroidery, cross stitch |
| ST 35 | purse or bag, hand embroidered | | not to exceed 18" x 36" |
| | No machine embroidery allowed | | |



DELTA Agribusiness Presents:

Educational Expo for 2022

Friday, Sept 9, at 9 am

**Celebrating our 15th year of bringing families entertainment,
we are excited to invite our students to come and learn at a
traditional, rural fair with modern touches.**

**Agriculture, commerce, family living, history, technology and
natural resources offer an amazing experience for all ages.**

**Teachers, advisors, instructors, plan your field trip now!
www.deltafest.com click on Ed Expo**

Category – WOOD CRAFTS – W

CHAIRMAN: Priscilla Tucker

Entry form due on or before Thursday, August 17, 2022.

Bring entries on Saturday, Aug 27, 2022.

All items must be made by the exhibitor and never entered previously at Delta Fair.

Premiums: 1st - \$7.50 2nd - \$5.00 3rd - \$3.00

BEGINNER WOOD CRAFTING

Open to anyone who has not previously won a ribbon in the category.

W 1 bowl turning
W 2 carving
W 3 pen turning

W 4 scroll saw design
W 5 spindle turning

Category – WOOD CRAFTS – W – (cont)

ADVANCED WOOD CRAFTING

Individual pieces in exhibits must not be over 18".
Items entered previously at Delta Fair may not be entered.

Best of Show – rosette & \$25.00

Given by: **The Woodwork Shop, Inc.**

W 6	constructed bird house or feeder	W 17	wood turning – hanging items, Christmas ornaments, etc.
W 7	constructed doll house	W 18	wood turning – hollow forms – urns & vases
W 8	scroll saw – other items not listed	W 19	wood turning – natural bark edge bowl
W 9	scroll saw – pictures, plaques, portraits	W 20	wood turning – pens – writing
W 10	wood accessory – book ends, kitchen, items, tray, etc.	W 21	wood turning – round rim bowl
W 11	wood boxes – jewelry, turned & band saw	W 22	wood turning – segmented
W 12	wood carving – animal or fowl construction	W 23	wood turning – spindle turned – candlestick, pepper mill, rolling pin
W 13	wood carving – characters (cowboys, famous person, Santa, etc.)	W 24	wood turning – turned plate or platter
W 14	wood carving – other item not listed	W 25	wooden toy
W 15	wood craft – other item not listed	W 26	Pyrography (wood burned) item
W 16	wood turning embellished – burned carved, inlay, painted, pierced, etc.	W 27	any other wood item not listed

THE WOODWORK SHOP, INC.

Professional Tools, Fine Hardwoods & Custom Woodwork

**8500 Wolf Lake Drive
Suite 101
Bartlett, TN 38133**

**Phone: 901-755-7355
Fax: 901-755-2907**



Delta Fair & Music Festival loves 4-H

Start today on entries for this year's contests. Don't miss 4-H Day, Friday, September 9, at 9 am. Send in your entry forms now.

Delta Fair & Music Festival is a proud sponsor of Tennessee 4-H Congress, supporting our youth, to make the best better!

Category – YOUTH CRAFTS – Y

CHAIRMAN: Jeannie Parish

Bring entries Sat, Aug 27

All youth exhibitors must submit entry form on or before Thursday, August 18, 2022. See guidelines on page 1 for further information. Guidelines apply to youth entries. All work must be original – no kits. **Maximum size any entry 12" x 14"** unless stated. Clothing or cloth items must be clean and stain free. Exhibits can NOT have been previously entered at Delta Fair & Music Festival.

Premiums: 1st - \$5.00 2nd - \$3.00 3rd - \$2.00

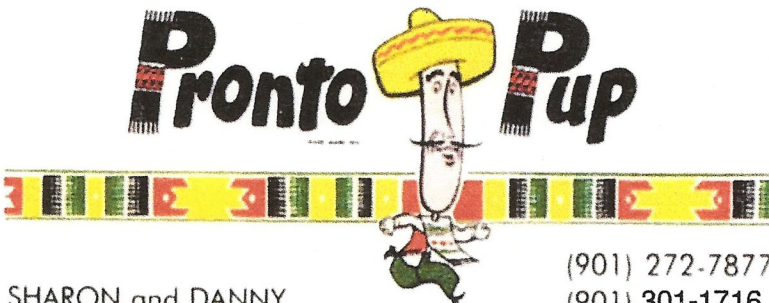
YOUTH CRAFTS ages 5 – 8

Best of Show – rosette & \$40 gift certificate

Given by: **Art Center**

- Y 1 3-D art made of recycled objects
- Y 2 bookmark
- Y 3 creative gift wrap package
- Y 4 decorated bottle
- Y 5 decorated pencil or jewelry box
- Y 6 key chain
- Y 7 knitted item – any size
- Y 8 Lego creation, max 12" x 14" x 12"
Must be attached to a base or tray

- Y 9 original holiday decoration
- Y 10 original jewelry secured to base
- Y 11 paper bag puppet
- Y 12 pinewood derby car – original
- Y 13 refrigerator magnet (child must do all work, including cutting)
- Y 14 sewn item – any size
- Y 15 woodcraft – original design – max. size 12" x 14" x 12"



SHARON and DANNY
ANDREINI

(901) 272-7877
(901) 301-1716
Cell (901) 301-0949

America's "BANQUET ON A STICK"
apronto1@aol.com

YOUTH CRAFTS – Y (cont.)

YOUTH CRAFTS ages 9 – 13

Bring entries Sat, Aug 27

Best of Show – rosette & \$40 gift certificate

Given by: **Art Center**

- Y 16 3-D art made from recycled objects
- Y 17 crocheted item – any size
- Y 18 cross stitched item
- Y 19 duct tape accessory or clothing
- Y 20 handmade doll
- Y 21 knitted item – any size
- Y 22 Lego creation, max 12" x 14" x 12"
Must be attached to a base or tray
- Y 23 macramé item
- Y 24 modeling dough or clay item
- Y 25 Mosaic
- Y 26 Origami

- Y 27 original holiday decoration
- Y 28 original jewelry secured to base
- Y 29 Paper Mache
- Y 30 pottery item
- Y 31 quilted item – any size
- Y 32 sewn clothing item – any size
- Y 33 sewn household item – any size
- Y 34 T-shirt, decorated
- Y 35 woodcraft – original design,
max size 12" x 14" x 12"
- Y 36 Zentangle art

YOUTH CRAFTS ages 14 – 18

Bring entries Sat, Aug 27

Best of Show – rosette & \$40 gift certificate

Given by: **The Art Center**

- Y 37 3-D art made from recycled objects
- Y 38 crocheted item – any size
- Y 39 cross stitched item
- Y 40 duct tape accessory or clothing
- Y 41 felted item – any size
- Y 42 handmade doll
- Y 43 knitted item – any size
- Y 44 Lego creation, max 12" x 14" x 12"
Must be attached to base or tray
- Y 45 macramé item any size
- Y 46 mosaic
- Y 47 origami
- Y 48 original holiday decoration
- Y 49 original jewelry secured to base

- Y 50 paper mache
- Y 51 pottery item
- Y 52 purchased apron – decorated
- Y 53 quilted item – any size
- Y 54 rug – any media – any size
- Y 55 sewn clothing item – any size
- Y 56 sewn household item – any size
- Y 57 T – shirt, decorated
- Y 58 textile wall hanging – original design
any size
- Y 59 woodcraft – original design
max size 12" x 14" x 12"
- Y 60 Zentangle art



Supply Store and Custom Frame Shop

1636 Union Avenue, Memphis TN 38104

Tel (901) 276-6321

8:30 am - 6:00 p.m. Monday – Friday

10:00 am - 5:00 p.m. Saturday • 1:00 p.m. - 5:00 p.m. Sunday

www.ArtCenterMemphis.com



Find us on Facebook - Art Center Memphis

STUDENT ART CONTEST GUIDELINES

CHAIRMAN: Shannon Bellamy

1. Exhibits must be entered on the Delta Fair & Music Festival Student Art form. The form may be downloaded on our website at www.DeltaFest.com. **Entry form must be with the exhibit on entry day - Saturday, August 27, 2022.** Entry form must be completed by the Art Instructor with their signature. Any questions please call Jan at 901 487-3075. Please do NOT tape entry form to back of art work.
2. Schools participating may enter two (2) pieces per grade level. Only ONE (1) entry per student is permitted. All entries must be from a school or home school association. Only teachers/instructors may submit exhibits. Art work must be brought and picked up by teacher/instructor or designee.
3. Student's NAME, GRADE, and SCHOOL MUST be listed on the back of the entry at the TOP RIGHT corner. Please print clearly - be sure it does NOT show through to the front. Make sure the student's NAME DOES NOT appear anywhere on the front of artwork.
4. **Artwork is to be brought to the Agricenter, Wing A, 7777 Walnut Grove Rd, Memphis, on Saturday, August 27, from 9 am till 6 pm.** Come to the outside entrance of Wing A, as the inside of the Agricenter is not open. No artwork will be accepted before or after this time. Results will NOT be given by phone.
5. Artwork will be displayed until September 12, 2022. **All artwork must be picked up on Monday, Sept 12, from noon till 6 pm,** at Wing A, outside entrance, of the Agricenter. Unclaimed art & award premiums will be donated to community services.
6. All artwork must be the original work of the student. Work must have been completed since September 1, 2021. Due to the increased volume of artwork entered, the following guidelines will be strictly adhered to:
 - * Artwork must be secured on poster board or mat board only. Poster board/matting should only extend beyond the maximum of 1" to 1 ½ inches from the original art.
 - * Maximum size of the artwork, including the poster board/mat is 18" X 24". NO exceptions. **Artwork over size will not be judged.** No 3-D artwork will be accepted.
 - * Students may enter 3-D or Relief Artwork in the Youth Craft area - see website for details. www.Deltafest.com, click on Contests, click on Crafts and then look under Youth Crafts for guidelines and entry. * No FRAMED artwork will be accepted.
 - * NO canvas boards or canvas art will be accepted – they are too heavy to hang properly without damaging them.
7. If artwork is not of sufficient merit, no ribbons/premiums will be awarded. Decisions of the judges are final. Premiums will be paid to the Art Instructor picking up artwork.
8. Every effort to protect and care for exhibits will be shown. However, Expo South, Universal Fairs, Delta Fair & Music Festival owners, directors, employees and volunteers will not be responsible for any loss or damage to entries. Delta Fair & Music Festival reserves the right to interpret or amend guidelines as necessary. Delta Fair & Music Festival reserves the right to refuse and or not display any item. All artwork must be viewable in accordance to family values.

Thank You, Student Art Sponsor:



DELTA FAIR'S CULINARY CONTESTS

CHAIRMAN: Shelby Forrest Wilson

Culinary Guidelines

All entries for culinary contests must have an entry form submitted on or before Thursday, August 18, 2022. Use same entry form as for Crafts & Collectibles. Tags for the entries will be provided on entry day of the contest.

Bring entries for the first culinary show Thursday, Sept 1, 2022, from noon till 1:30 pm. Bring culinary entries to the outside door of Wing A. You may drive to Wing A to drop off entries, but you must then immediately move your vehicle. Volunteers will be available to help you put on tags and enter your items. Judging for the first culinary show is closed as the Fair does not open until Friday.

Items entered in the first show will not be returned. Delta Fair would love to display all entries, but according to space availability, we reserve the right to only display winners. Enter the entire cake or loaf, for competition. Half items will not be judged.

Enter items on disposable cake plates or heavy cardboard that has been covered in foil. Please allow 1 inch around the cake on all side. The board should conform to the shape of the cake – round or rectangular. Exhibits must be stable to be displayed.

Exhibitors may only enter one exhibit in any class. Youth entries must be of ages 5 through 18. Anyone 19 or older are entered as adult entries. No open flame warming appliances are allowed.

All exhibits displayed from the first culinary show will be disposed of at the close of Delta Fair. **Ribbons won at the first culinary show must be picked up Monday, Sept 12, 2022, from noon till 6 pm, at outside entrance of Wing A.**

Exhibits will be judged by: appearance 30%, texture 30%, flavor 40%

FIRST SHOW CULINARY – Thursday, Sept 1, 2022

Premiums: 1st - \$7.50 2nd - \$5.00 3rd - \$3.00

QUICK BREADS Best of Show – rosette & \$25.00

C 1	any other quick bread	C 4	fruit bread
C 2	biscuits (8)	C 5	fruit muffins (8)
C 3	corn sticks or muffins (8)	C 6	vegetable bread

FIRST SHOW CULINARY – Thursday, Sept 1, 2022 (cont.)

Submit entry form by Thursday, August 18, 2022

YEAST BREADS

Best of Show – rosette & \$25.00

- | | | | |
|------|---|------|------------------------------|
| C 7 | braided French bread
or other crusty bread | C 12 | machine-made bread –any kind |
| C 8 | cinnamon rolls (8) | C 13 | raisin bread |
| C 9 | cloverleaf rolls (8) | C 14 | sour dough bread |
| C 10 | coffee cake | C 15 | wheat bread |
| C 11 | herb bread | C 16 | white bread |
| | | C 17 | whole grain bread |

CAKES

Best of Show – rosette & \$25.00

No fresh fruits may decorate cakes. Cakes must be shelf stable.

- | | | | |
|------|---|------|----------------------------|
| C 18 | Angel food cake | C 24 | German chocolate cake |
| C 19 | cake with fruit or nuts | C 25 | lemon cake |
| C 20 | carrot cake | C 26 | pineapple upside down cake |
| C 21 | creative mix – other
flavor not listed | C 27 | pound cake |
| C 22 | coconut cake | C 28 | red velvet cake |
| C 23 | devil's food cake | C 29 | strawberry cake |

CANDY

Best of Show – rosette & \$25.00

Each entry must contain 8 pieces on disposable plate.

- | | | | |
|------|------------------------|------|---|
| C 30 | divinity | C 36 | molded candy – judged by
display of items only |
| C 31 | dipped candy | C 37 | nut brittle – list type of nut
on entry form |
| C 32 | fudge – chocolate | C 38 | pralines |
| C 33 | fudge – peanut butter | C 39 | any other candy not listed |
| C 34 | fudge – any other kind | | |
| C 35 | old fashioned candy | | |

COOKIES

Best of Show – rosette & \$25.00

Each entry must contain 8 pieces on disposable plate.

- | | | | |
|------|--|------|--|
| C 40 | bar cookie – list type on tag back | C 46 | macaroon cookies |
| C 41 | brownies | C 47 | peanut butter cookies |
| C 42 | chocolate chip | C 48 | rolled sugar cookies |
| C 43 | creative mix cookies – use
cake or cookie mix as base | C 49 | rolled sugar cookies –
frosted |
| C 44 | decorated cookies – judged on
decoration only | C 50 | any other cookie not listed
list type on tag back |
| C 45 | oatmeal cookies | | |

FIRST SHOW CULINARY – Thursday, Sept 1, 2022 (cont.)

DECORATED CAKES Submit entry form by Thursday, August 18, 2022
Cakes will be displayed for the duration of the Delta Fair. Do not use fresh fruit garnishments. Exhibitors may only enter under one category – amateur, advance amateur or professional. Exhibitors may enter a cake in each class in the category being entered.
Cakes are judged according to: craftsmanship 25%, general appearance 25%, originality 25% and taste 25%. Entire cake must be edible. Entries are not returned.

Premiums: 1st - \$25.00 2nd - \$20.00 3rd - \$15.00

AMATEUR – exhibitors who decorate as a hobby
Entire cake must be edible. Items are not returned.

Best of Show – rosette & \$50.00

DC 49 Character pan or novelty cake

DC 50 Gingerbread House – any theme by individual,
judged by creativity

DC 51 Gingerbread House – any theme by group,
judged by creativity

DC 52 Holiday

DC 53 Wedding

ADVANCED AMATEUR – exhibitors who decorate as a hobby and sometimes sell a cake. Entire cake must be edible. Items are not returned.

Best of Show – rosette & \$50.00

AA 54 character pan or novelty cake

AA 55 Gingerbread House – any theme by group,
judged by creativity

AA 56 Holiday

AA 57 Wedding

PROFESSIONAL – exhibitors who teach and/or sell their cakes.
Entire cake must be edible. Items are not returned.

Premiums: 1st - \$50.00 2nd - \$25.00 3rd - \$15.00

Best of Show – rosette \$100.00

PRO 58 Holiday theme decorated cake

PRO 59 Wedding



We've all lost friends or loved ones during this horrid time of covid. Volunteers, judges and chairman are greatly missed. Robby Bellamy had a true servant's heart and not only did he help with setup, antiques, student art and culinary, he enjoyed doing it all. That smile that could light up a room – his service to others made him unforgettable to everyone he met. Please keep Shannon and his family in your prayers.

To all of our wonderful friends who have passed away during this time, we miss you and were so grateful to have known you.

CULINARY – YOUTH CONTEST – Thursday, Sept 1, 2022

CHAIRMAN: Angie Bonner

All entries for culinary contests must have a entry form submitted on or before Thursday, Aug 18, 2022. Use same entry form as for Crafts & Collectibles. Tags for the entries will be provided on entry day of the contest.

ALL youth entries for culinary will be during the first culinary show on Thursday, Sept 1, 2022. Bring entries to outside entrance, WING A, between noon and 1:30 pm. Culinary guidelines on page 35 apply to the Youth Culinary Contest also. Do NOT use fresh fruit garnishments.

Premiums: 1st - \$5.00 2nd - \$3.00 3rd - \$2.00

CULINARY ages 5 through 10

Best of Show – rosette & \$20.00

CY 58	biscuits (6)	CY 63	fudge (8)
CY 59	brownies (6)	CY 64	gingerbread man (3)
CY 60	corn bread muffins (6)	CY 65	muffins (6)
CY 61	decorated cake	CY 66	quick bread
CY 62	decorated cup cakes (6)	CY 67	snacks

CULINARY – ages 11 through 14

Best of Show – rosette & \$20.00

CY 68	decorated cake	CY 75	loaf bread – yeast, machine made
CY 69	decorated cup cakes (6)	CY 76	molded candy (8)*
CY 70	edible party favor (6)	CY 77	muffins (6)
CY 71	fudge (8)	CY 78	quick bread
CY 72	gingerbread house*	CY 79	yeast rolls (6)
CY 73	layer cake – iced		
CY 74	loaf bread – yeast		

CULINARY – ages 15 through 18

Best of Show – rosette & \$20.00

CY 80	decorated cake	CY 88	molded candy (8)*
CY 81	decorated cup cakes (6)	CY 89	muffins (6)
CY 82	edible party favor (6)	CY 90	quick bread
CY 83	fudge (8)	CY 91	party cookies (6)
CY 84	gingerbread house*	CY 92	pound cake
CY 85	layer cake – iced	CY 93	yeast rolls (6)
CY 86	loaf bread – yeast		
CY 87	loaf bread – yeast – machine made		

*judged by decoration, not taste

DELTA FAIR'S BEST COOK CONTEST Tuesday, September 7, 2022

Back for 2022! Any adult exhibitors may enter in Delta Fair's Best Cook Contest. Exhibitors in the Best Cook contest are required to enter both classes in the Best Cook contest. Winner of Delta Fair's Best Cook Contest receives her or his very own custom apron stating "Delta Fair's Best Cook " and the grand culinary prize of \$300!

All exhibitors must submit an entry form for the Best Cook contest on or before Thursday, August 18, 2022. Tags will be provided on entry day.

Bring entries to the outside entrance of Wing A, on **Tuesday, Sept 6, 2022, from 2 pm to 3:30 pm.** Note time please, as Fair does not open until 4 pm on Tuesday. Judging will begin at 4 pm and will be live in Wing A.

Two (2) typed copies of the recipe must be submitted with each entry. Only 1 entry per class per exhibitor. Winning recipes become property of Delta Agribusiness.

Delta Fair's Best Cook Contest is for amateur cooks only.

Exhibits may be picked up at the conclusion of judging. Containers not picked up by 6 pm will be donated to charity. Open flame warming appliances are not allowed.

Exhibits will be judged on: appearance 30%, ease to prepare 30%, taste 40%

DELTA FAIR'S BEST COOK CONTEST

Premiums: 1st - \$200 2nd - \$150 3rd - \$100

Best Cook Award: \$300

BC 94 Best Meal in a crockpot
(main dish in a crockpot)

BC 95 Best Dessert

Thank you, Agricenter Staff, for 15 great years!



Agricenter
International

DELTA FAIR'S BEST CHILI CONTEST

Tuesday, September 6, 2022

Adult exhibitors are invited to enter Delta Fair's Best Chili Contest. Men – this is your chance to shine, cause our ladies make some mighty fine chili too – so you're gonna have your work cut out for you! Winner of Delta Fair's Best Chili Contest receives \$200 cash, Best Chili rosette and bragging rights for 2022.

All exhibitors must submit an entry form for the Best Chili contest on or before Thursday, August 18, 2022. Tag will be provided on entry day.

Bring entry to the outside entrance of Wing A, on **Tuesday, Sept 6, 2022, from 2 pm till 3:30 pm.** Fair opens at 4 pm on Tuesday. Judging will be at 4 pm – come back at 4 pm to see who wins!

Two (2) typed copies of the recipe must be submitted with each entry. Only 1 entry per exhibitor. Winning recipes become property of Delta Agribusiness.

Delta Fair's Best Chili Contest is for amateur cooks only. No paid Chef entries please. Exhibits may be picked up at the conclusion of judging. Containers not picked up by 6 pm will be donated to charity. Open flame warming appliances are not allowed. Bring chili in a crock pot.

Exhibits will be judged on: taste 40%, aroma 30%, consistency 30%

DELTA FAIR'S BEST CHILI CONTEST

Premiums: 1st - \$200 2nd - \$150 3rd - \$100

BC 96 Best Chili

Calling all DECA/FCCLA/FFA/4-H/SKILLS USA students:

Check out Delta Fair's Poster Contest just for you – have your advisor or teacher print the form and enter your group to win one of Delta Fair's poster contest cash prizes!



SCHOOL DAY:
Friday, Sept 9
Go to Ed Expo for
field trip information.
Open at 9 am!



TENNESSEE FFA

DELTA FAIR'S BEST CUPCAKE CONTEST -CU Saturday, Sept 10, 2022

Cupcakes are the best! Birthdays, anniversaries, showers, weddings, or just any day will do, cupcakes are the preferred dessert. Bring 6 of your favorite, beautifully decorated cupcakes, along with 2 copies of your typed recipe to see who bakes the best cupcakes at Delta Fair. Winning recipes become property of Delta Agribusiness. Recipes must be original – not from a box! **Amateur bakers only.**

All exhibitors must submit an entry form for the Best Cupcake contest on or before Thursday, August 18, 2022. Tag will be provided on entry day.

Bring entry to the outside entrance of Wing A, on Saturday, Sept 10, from 10 am till 11:30 am. Judging will begin at noon and will be live in Wing A. Exhibits will not be returned to entrants. Winners may pick up their ribbons and cash prizes Monday, Sept 12, from noon till 6 pm. Exhibits will be judged by: 60% taste, 40% appearance

CU 97: Best Cupcake Contest Adults (19 and older)

Premiums: 1st - \$100 2nd - \$75 3rd - \$50

CP 98: Best Cupcake Contest Youth (ages 5 to 18)

Premiums: 1st - \$50 2nd - \$25 3rd - \$10



Thank you, Delta Fair Photographers – for all your hard work!

DELTA FAIR'S BEST DESSERT PIE - CD

Delta Fair's Best Pie Contest – Bring your favorite dessert pie, in a disposable plate. As no entries will be returned, on Saturday, Sept 10, 10 am till 11:30 am, to the outside entrance of Wing A. Bring 2 copies of your typed recipe. Winning recipes become property of Delta Agribusiness. Recipes must be your own!

All exhibitors must submit an entry form for the Best Pie Contest on or before Thursday, August 18, 2022. Tag will be provided on entry day. Winners may pick up their ribbons and cash prizes Monday, Sept 12, from noon till 6 pm. **Amateur bakers only.** Entries judged by: 60% taste, 40% appearance. Judging at noon.

Premiums: 1st - \$100.00 2nd - \$75.00 3rd - \$50.00

CD 105: Best Dessert Pie Adults

Back in 2022 – King Arthur Flour’s Company Coming Cake Contest!

Get into the kitchen and grab your mixing bowl: you could be a prize winner in this year's **King Arthur Flour Baking Contest**. Show us your blue-ribbon skills: Bake up your best cake for company, for a chance to win! All exhibitors must submit an entry form for the Company Coming Cake contest on or before **Thursday, August 18, 2022**. Tag will be provided on entry day.



Adult entry only: KA 100

Bring entry to the outside entrance of Wing A, on **Saturday, Sept 10, 2022, from 10 am till 11:30 am**. Fair opens at noon on Saturday. Judging will be at noon – come by to see who wins!

Two (2) typed copies of the recipe must be submitted with each entry. Only 1 entry per exhibitor. Exhibitor must submit a UPC label from the King Arthur Flour bag with the entry. Of course, King Arthur Flour must be used in the cake recipe. Winning recipes become property of King Arthur Flour. No entries returned, please use disposable container for the entry. Ribbons and certificates presented after final results of judging.

Cake will be judged on: Taste 50%, Texture 25%, Overall appearance & creativity 25%

1st place: \$75 gift certificate to the Baker’s Catalogue/ kingarthurfLOUR.com

2nd place: \$50 gift certificate to the Baker’s Catalogue/ kingarthurfLOUR.com

3rd place: \$25 gift certificate to the Baker’s Catalogue/ kingarthurfLOUR.com
All winners will also receive a gorgeous ribbon!



Visit Safari Wild at
1549 Rooks Road
Como, MS 38619

662 526-0001

www.safariwildanimalpark.com



Family Fun at DELTA FAIR 2022

***Delta Fair & Music Festival is celebrating
15 years of providing community fun for the family!***

Everyone loves a parade – kid friendly, family fun! Drop on by the Crafts area, beside WING A, in the Agricenter at 4:30 pm on weekends & Labor Day, to “parade” with us from the Crafts area to the Children’s Barnyard.

Volunteers needed to play the drums, sound the noise makers, carry banners & balloons, for a great making family memories time at Delta Fair & Music Festival! Strollers welcome, invite everybody you see.

Delta Fair & Music Festival is *Everyone’s Fair* – where every day is your birthday! What a great idea – plan now to have your office party, club get-together or birthday party at Delta Fair 2022. Call Jan at 487-3075 to plan your day.



Delta Fair & Music Festival opened in 2007. In 2008, we began offering contests for the community. Crafts, Culinary & Collectibles celebrates 14 years of serving the community in 2022. Our committee of dedicated chairmen make this possible. They serve throughout the year, to bring you these great contests. We would like to thank our 2022 committee, for all their service.

Shannon Bellamy
Gail Bishop
Angie Bonner
Susan Boyd
Flo Durham
Sharon Gunlock
Marcia Higgs
Susan Joyner
Becky McCoy
Heather McDonough
Nancy McDonough
Linda McKinley
Debbi Molloy
Cyndy Osborne
Jeannie Parrish
Teresa Pegrim
Diane Rosloniec
Shey Sims
Patty Shelton
Barbara Thompson Smith
JoAnn St Lawrence
Priscilla Tucker
Louise Williams
Shelby Forrest Wilson

**And to the many
Craft & Culinary & Gardening and all our
Livestock Volunteers,
THANK YOU for ALL you do!**

PARTY ANIMALS
WE BRING THE ZOO TO YOU!

TERESA HINDS

OWNER

931-212-1211

1103 GOFORTH ROAD
MORRISON, TN 37357

partyanimalsinc@bellsouth.net

Visit Our Party Animals Facebook Page



Visit our educational petting zoo – near Entrance 1 – enjoy watching barnyard animals from hatching baby chicks, to sliding ducks, adorable baby piglets to exotic animals like a baby kangaroo! Pet the animals, feed them from your hand and learn about their lifestyle.



2022 DELTA AGRIBUSINESS LIVESTOCK SCHEDULE

Livestock Show Coordinator: Ann Johnson

THURSDAY, SEPTEMBER 1

4:00 p.m. warm up barn, outside arena & Showplace arena setup

FRIDAY, SEPTEMBER 2

5:00 p.m. Beef Cattle Arrival (optional) - ***NO EARLY ARRIVALS*** Workout Barn
 5:00 p.m. Breeding Hog Arrival (optional) - ***NO EARLY ARRIVALS*** Warm-Up Barn

SATURDAY, SEPTEMBER 3

9:00 a.m. Junior Breeding Hog Arrival DEADLINE Warm-Up Barn
 9:00 a.m. Junior Cattle Arrival DEADLINE Workout Barn
 12:00 noon Skill-a-thon (Open thru Monday at noon) Workout Barn
 12:00 noon Junior Beef Heifer Show Showmanship Showplace Arena
 1:00 p.m. Junior Breeding Hog Show Showmanship Warm-Up Barn
 1:00 p.m. Junior Beef Heifer Show Showplace Arena
 2:00 p.m. Junior Breeding Hog Show Warm-Up Barn
 4:00 p.m. Supreme Champion Cattle Show

(Jr. Show Cattle & Hogs released after Supreme Champion)

SUNDAY, SEPTEMBER 4

9:00 a.m. Open Breeding Hog Arrival DEADLINE Warm-Up Barn
 9:00 a.m. Open Beef Cattle Arrival DEADLINE Workout Barn
 10:00 a.m. Cowboy Church Workout Barn
 11:00 a.m. Santa Gertrudis Show Showplace Arena
 12:00 noon Red Angus Show Showplace Arena
 1:00 p.m. Open Breeding Hog Show Warm-Up Barn
 1:00 p.m. Shorthorn Show Showplace Arena
 2:00 p.m. Angus Show Showplace Arena
 3:00 p.m. AOB Show Showplace Arena
 4:00 p.m. Hereford Show Showplace Arena
 5:00 p.m. Brahmousin Show Showplace Arena
 5:30 p.m. Brahman Show Showplace Arena
 6:00 p.m. Supreme Champion Female & Bull (All breeds)
(Open Show Cattle released after Supreme Champion)
 6:00 p.m. Market Hog Arrival (optional) Warm-Up Barn

MONDAY, SEPTEMBER 5

9:00 a.m. Poultry Arrival DEADLINE
 10:00 a.m. Junior Market Hog Weigh in DEADLINE Warm-Up Barn
 11:00 a.m. Poultry Show – Judging Begins Showplace Arena
 12:00 noon Skill-a-thon Closes Warm-Up Barn
 1:00 p.m. Junior Market Hog Show Showmanship Warm-Up Barn
 2:00 p.m. Junior Market Hog Show Warm-Up Barn
(Junior Market Hogs Released After Show)
 3:00 p.m. Poultry Show Released Showplace Arena

TUESDAY, SEPTEMBER 6

Open Barns for Clean Out and Set-Up

4:00 p.m. Open Breeding Sheep Arrival (Optional) ***NO EARLY ARRIVALS***
 Workout Barn

WEDNESDAY, SEPTEMBER 7

10:00 a.m.	Open Breeding Sheep Arrival DEADLINE	
12:00 noon	Katahdin Breeding Sheep Show	Showplace Arena
1:00 p.m.	Natural Colored Breeding Sheep Show	Showplace Arena
2:00 p.m.	Dorset Breeding Sheep Show	Showplace Arena
3:00 p.m.	AOB Wool Breeding Sheep Show	Showplace Arena
4:00 p.m.	Tunis Breeding Sheep Show	Showplace Arena
5:00 p.m.	Dorper Breeding Sheep Show	Showplace Arena
6:00 p.m.	Supreme Champion Ram and Ewe	Showplace Arena

THURSDAY, SEPTEMBER 8

8:00 a.m.	Open Breeding Sheep Arrival DEADLINE	Workout Barn
10:00 a.m.	Shropshire Breeding Sheep Show	Showplace Arena
12:00 noon	Southdown Breeding Sheep Show	Showplace Arena
2:00 p.m.	Hampshire Breeding Sheep Show	Showplace Arena
4:00 p.m.	AOB Meat Breeding Sheep Show	Showplace Arena
6:00 p.m.	Supreme Champion Ram and Ewe	Showplace Arena

FRIDAY, SEPTEMBER 9**School & FFA Day at the Fair**

8:00 a.m.	Jr. Breeding Sheep Arrival DEADLINE	Workout Barn
9:00 a.m.	Skill-a-thon (closes at 4:00 p.m.)	Workout Barn
9:00 a.m.	Junior Sheep Showmanship	Showplace Arena
	Ring A	Ring B
10:00 a.m.	AOB Meat	Dorper
12:00 noon	Hampshire	Tunis
1:00 p.m.	Hampshire (Cont.)	AOB Wool
2:00 p.m.	Southdown	Dorset
3:00 p.m.	Southdown (Cont.)	Natural Color
4:00 p.m.	Shropshire	Katahdin
6:00 p.m.	Supreme Champion Ram and Ewe	Showplace Arena

(Jr. Breeding Sheep Released After Show)

SATURDAY, SEPTEMBER 10

11:00 a.m.	Junior Market Lamb Weigh-in DEADLINE	Warm-Up Barn
1:00 p.m.	Junior Market Lamb/Commercial Ewe Showmanship	Warm-Up Barn
2:00 p.m.	Junior Market Lamb Show	Warm-Up Barn
3:00 p.m.	Commercial Ewe Show	Warm-Up Barn

(Market Lambs and Commercial Ewes released after Commercial Ewe Show)

SUNDAY, SEPTEMBER 11

11:00 a.m.	Boer Goat Arrival DEADLINE	Warm-Up Barn
1:00 p.m.	Junior Goat Showmanship	Warm-Up Barn
2:00 p.m.	Junior Market Goat Show	Warm-Up Barn
3:00 p.m.	Junior Commercial Doe Show	Warm-Up Barn
3:30 p.m.	Junior & Open Registered Boer Goat Show	Warm-Up Barn
4:30 p.m.	Open Commercial Doe Show	Warm-Up Barn

(All Goats must be removed immediately after Show)

5:00 p.m.	Workout & Warm-Up Barn Take Down
-----------	----------------------------------



2022 Delta Agribusiness Livestock Entry Fee Schedule at Delta Fair & Music Festival 2022

Entry Deadline is August 15, 2022. Double fees will be assessed after midnight on August 15, 2022. Late entries will be accepted up until August 30, 2022.

Cattle:

Open Beef Cattle Show - \$20.00/head
Junior Beef Heifer Show - \$5.00/head

Sheep:

Open Breeding Sheep Show – \$10.00/head
Junior Breeding Sheep Show - \$5.00/head
Junior Market Lamb Show - \$5.00/head
Junior Commercial Ewe Show - \$5.00/head

Swine:

Open Breeding Hog Show - \$10.00/head
Junior Breeding Hog Show - \$5.00/head
Junior Market Hog Show - \$5.00/head

Goats:

Open Registered/Commercial Goat Show - \$10.00/head
Junior Registered/Commercial Goat Show - \$5.00/head
Junior Market Goat Show - \$5.00/head

Poultry:

Open Show - \$4.00/head
Junior Show - \$2.00/head

Exhibitor Passes:

One Day Pass - \$5.00/person
Two Day Pass - \$12.00/person

Parking Passes:

One Day Pass - \$5.00/vehicle
Two Day Pass - \$10.00/vehicle

Miscellaneous:

Shavings - \$8.00/bale
Extra t-shirts - \$10.00/shirt (All Junior Exhibitors will receive 1 free shirt)
RV Hook-up Fees - \$25.00/night

JUNIOR BEEF HEIFER SHOW

Showplace Arena

Saturday, September 3, 2022

Judges: TBA

Questions or Concerns Contact: **Ann Johnson, Livestock Show Coordinator**
901-482-5951 or johnsona2@aol.com

ENTRY FORMS DUE: AUGUST 15

LATE ENTRIES WILL BE CHARGED DOUBLE ENTRY FEES.

Entries must be completed online at www.deltafest.com and then fees sent to
Delta Agribusiness P.O. BOX 1327 Cordova, TN 38088.

Arrival Deadline

9:00 a.m. SATURDAY

Show Time

12:00 NOON SATURDAY

Release Time

After Jr. Show SATURDAY

1. Competition is limited to 4-H members and Vocational Agriculture students who will be enrolled in the 4th grade and have not reached the end of the calendar year of their high school graduation or the end of the calendar year following their 19th birthday, whichever comes first. Those members who have completed one semester of college are ineligible. The exhibitors must be under the supervision of either an extension agent or agriculture teacher and be required to comply with all rules of the show. ***Junior Show participants are limited to the Delta Region including, Tennessee, Mississippi, Arkansas, Missouri and Kentucky.***
2. On or before August 15, 2022, the 4-H agent or agriculture teacher must submit entries to the Delta Livestock Show P.O. Box 1327 Cordova, TN 38088. Entry form is located on the web.
3. 4-H and FFA members must be the sole owner of the animal they exhibit by July 1, 2022. Heifers registered in the name of the farm, father and son, chapter or club, and similar combinations WILL NOT be accepted. Original registration certificates or lease agreements for each animal must be presented to the show superintendent by 12:00 noon.
4. All animals must be shown by the owner unless injury or sickness prevents him/her from doing so, unless given permission by the management. Unauthorized personnel are not allowed in the show ring.
5. Health requirements are listed elsewhere in the catalog.
6. Each exhibitor is limited to two entries in one class.
7. No heifer may be exhibited in competition that cannot be properly managed in the show ring by the owner.
8. Any breed with 10 or more head by two or more exhibitors will be separated from AOB and shown in its respective breed. **All Other Registered Breeds** (When registering please denote breed)
The following breeds will have an individual show based on 2021 numbers: Angus, Brahmousin, Hereford, Red Angus, Santa Gertrudis, Shorthorn

Female Classes:

1. Spring Heifer Calves, calved March 1, or later
2. Junior Heifer Calves, calved Jan. 1-Feb. 29
3. Winter Heifer Calves, calved Nov. 1-Dec. 31
4. Senior Heifer Calves, calved Sept. 1-Oct. 31
5. Late Summer Yearling Females, calved July 1-Aug. 31
6. Summer Yearling Females, calved May 1-June 30
7. Late Spring Yearling Females, calved March 1-April 30
8. Early Junior Yearling Females, calved Jan 1- Feb. 28
9. Late Yearling Females, calved Nov. 1-Dec. 31
10. Early Yearling Females, calved Sept. 1- Oct. 31
11. Grand Champion Heifer
Reserve Champion Heifer

Junior Beef Heifer Show (cont.)

There will be three showmanship and skill-a-thon award areas:

Junior 4th, 5th, 6th Grade

Junior High 7th, 8th, 9th Grade

Senior High 10th, 11th, 12th Grade

PREMIUM SCHEDULE

1ST	2ND	3RD	4TH	5TH
\$50	\$35	\$20	\$15	\$10

Overall Supreme Champion - \$125

Overall Reserve Supreme Champion - \$50

All prizes and ribbons will be presented as placing is announced. Premiums will be paid in cash on day of show. Please be sure your premiums are correct. No corrections will be made after day of show.

Open Beef Cattle Show Showplace Arena Sunday, September 4, 2022 Judge: TBA

Questions or Concerns Contact: **Ann Johnson, Livestock Show Coordinator**
901-482-5951 or johnsona2@aol.com

ENTRY FORMS DUE: AUGUST 15

LATE ENTRIES WILL BE CHARGED DOUBLE ENTRY FEES.

Entries must be completed online at www.deltafest.com and fees sent to Delta Agribusiness P.O. BOX 1327 Cordova, TN 38088.

SUNDAY, SEPTEMBER 4

9:00 a.m.	Open Beef Cattle Arrival DEADLINE	Workout Barn
11:00 a.m.	Santa Gertrudis Show	Showplace Arena
12:00 noon	Red Angus Show	Showplace Arena
1:00 p.m.	Shorthorn & Shorthorn Plus Show	Showplace Arena
2:00 p.m.	Angus Show	Showplace Arena
3:00 p.m.	AOB Show	Showplace Arena
4:00 p.m.	Hereford Show	Showplace Arena
5:00 p.m.	Brahmousin Show	Showplace Arena
5:30 p.m.	Brahman Show	Showplace Arena
6:00 p.m.	Supreme Champion Female & Bull (All breeds)	Showplace Arena
	<i>(Open Show Cattle released after Supreme Champion)</i>	

Entries in this division shall be subject to the General Livestock Rules, Regulations, and Health Requirements as published in the front part of this Premium List.

All animals in the open breeding classes must be registered as the property of the exhibitor, in the books of record for their respective breed, at least thirty (30) days prior to the opening of the Fair. Entries must be made in the owner's name that appears on the registration certificate. Exhibitors must have the original registration certificate or the officially produced copy available for inspection. All animals must have a proper and legible tattoo. Animals shown in group classes must have been entered and show in individual classes. All other rules of this show apply.

Open Beef Cattle Show (cont.)

PREMIUM SCHEDULE

1ST	2ND	3RD	4TH	5TH
\$80	\$50	\$35	\$20	\$10

Female Classes:

1. Spring Heifer Calves, calved March 1, or later
2. Junior Heifer Calves, calved Jan. 1-Feb. 29
Junior Calf Champion Female Rosette
Reserve Calf Champion Female Rosette
3. Winter Heifer Calves, calved Nov. 1-Dec. 31
4. Senior Heifer Calves, calved Sept. 1-Oct. 31
Senior Calf Champion Female Rosette
Reserve Senior Calf Champion Female Rosette
5. Late Summer Yearling Females, calved July 1-Aug. 31
6. Summer Yearling Females, calved May 1-June 30
Intermediate Champion Female Rosette
Reserve Intermediate Champion Female Rosette
7. Late Spring Yearling Females, calved March 1-April 30
8. Early Junior Yearling Females, calved Jan 1- Feb. 28
Junior Champion Female Rosette
Reserve Junior Champion Female Rosette
9. Late Yearling Females, calved Nov. 1-Dec. 31
10. Early Yearling Females, calved Sept. 1- Oct. 31
Senior Champion Female Rosette
Reserve Senior Champion Female Rosette
11. Cow/Calf, calf must be cow's natural calf not embryo transplant. Calf to be no more than 250 days of age by day of show. Calf must be purebred and registered with the AICA. No age restriction on cow. Calf not eligible to compete in individual calf classes if shown with dam. Pair is eligible for Grand or Reserve Grand Champion Female. Cow and/or Calf may be included in group class entries as individuals, not as pair comprising a single animal unit.

Champion Cow/Calf Rosette
Reserve Champion Cow/Calf Rosette
Grand Champion Female Banner
Reserve Grand Champion Female Banner

Bull Classes:

1. Spring Bull Calves, calved March 1, or later
2. Junior Bull Calves, calved Jan. 1-Feb. 29
Junior Calf Champion Bull Rosette
Reserve Calf Champion Bull Rosette
3. Winter Bull Calves, calved Nov. 1-Dec. 31
4. Senior Bull Calves, calved Sept. 1-Oct. 31
Senior Calf Champion Bull Rosette
Reserve Senior Calf Champion Bull Rosette

Open Beef Cattle Show (cont.)

- | | |
|--|---------|
| 5. Late Summer Yearling Bulls, calved July 1-Aug. 31 | |
| 6. Summer Yearling Bulls, calved May 1-June 30 | |
| Intermediate Champion Bull | Rosette |
| Reserve Intermediate Champion Bull | Rosette |
| 7. Spring Yearling Bulls, calved March 1-April 30 | |
| 8. Junior Yearling Bulls, calved Jan. 1-Feb. 29 | |
| Junior Champion Bull | Rosette |
| Reserve Junior Champion Bull | Rosette |
| 9. Senior Yearling Bulls, calved Sept. 1- Dec. 31 | |
| 10. Summer Senior Yearling Bulls, calved May 1-Aug. 31 | |
| 11. Two-Year-Old Bulls, calved Jan. 1- Apr. 30 | |
| Senior Champion Bull | Rosette |
| Reserve Senior Champion Bull | Rosette |
| Grand Champion Bull | Banner |
| Reserve Grand Champion Bull | Banner |

Group Classes:

1. **Pair of Heifers:** Best two heifers owned by the exhibitor.
 2. **Junior Get-Of-Sire:** three animals by one sire, both sexes represented, shown in Female Cls. 1-7 & Bull Cls. 1-6
 3. **Get-Of-Sire:** Four animals by one sire shown in the above classes, both sexes represented
 4. **Best six head** — All animals must have been shown in their respective single entry classes and they must be owned by the exhibitor or by a member of his/her immediate family. A cow-calf will be considered as two head in the best six head class.
 5. **Premier Breeder** Banner
 6. **Premier Exhibitor** Banner
- Premier Breeder and Exhibitor- A winner will be determined by the exhibitor's placement in individual classes only, as follows: 3 points for 1st, 2 points for 2nd, and 1 point for 3rd. Maximum number of placements to be used to determine the winner shall be limited to the five that total the most number of points. In case of a tie, additional placements beyond 5 will be used until a winner is determined.*

--Grand and Reserve Grand Champion Cow/Calf Pairs do not show for Grand Champion Female and are ineligible to compete in the Get-Of-Sire and Junior Get-Of-Sire

Overall Supreme Champion Female- \$125 and banner and
Overall Reserve Supreme Champion Female - \$50

Overall Supreme Champion Bull- \$125 and banner and
Overall Reserve Supreme Champion Bull - \$50

All prizes and ribbons will be presented as placing is announced. Premiums will be paid in cash on day of show. Please be sure your premiums are correct. No corrections will be made after day of show.

Junior Breeding Hog Show

Saturday, September 3, 2022

Judge: TBD

Questions or Concerns Contact: **Ann Johnson, Livestock Show Coordinator**
901-482-5951 or johnsona2@aol.com

ENTRY FORMS DUE: AUGUST 15
LATE ENTRIES WILL BE CHARGED DOUBLE ENTRY FEES.

9:00 a.m. Breeding Hog Arrival Deadline
1:00 p.m. Junior Breeding Hog Show Showmanship
2:00 p.m. Junior Breeding Hog Show
Supreme Champion Gilt at Conclusion of Show
(Breeding Hogs Released After Show)

1. **Registration:** All animals must be registered in the owner's name at least 30 days prior to date of show and recorded in the recognized record book of the breed. Registration papers and health certificates will be checked. Failure to produce proper credentials will disqualify entry. An exhibitor can enter a maximum of 2 entries in each individual class. Registration papers will be checked on the day of the show. Lease agreements will not be accepted.

2. Only junior exhibitors will be allowed to enter and show. Competition is limited to peewees, 4-H members and FFA students who have not reached the end of the calendar year of their high school graduation or the end of the calendar year following their 19th birthday, whichever comes first. Those members who have completed one semester of college are ineligible. The exhibitors must be under the supervision of either an extension agent or agriculture teacher and be required to comply with all rules of the show. ***Junior Show participants are limited to the Delta Region including, Tennessee, Mississippi, Arkansas, Missouri and Kentucky.***

3. Gilts shown in Breeding Classes are not eligible for the Market Classes.

4. Breed divisions will be offered to the nine breeds with the largest representation and an all other breeds division.

5. There will be a showmanship call back class. Exhibitors entered in the breeding show or market show are eligible for call back.

Classes offered for gilts:

1. December Gilts (born Dec. 1, - Dec 31, last year)
2. January Gilts (born Jan 1 – Jan. 31, this year)
3. February Gilts (born Feb 1 – Feb. 28, this year)
4. March Gilts (born March 1 – March 31, this year)
5. April Gilts (born April 1 - April 30, this year)
6. Grand and Reserve Champion Gilt

There will be three showmanship awards and skill-a-thon award areas:

Junior 4th, 5th, 6th Grade

Junior High 7th, 8th, 9th Grade

Senior High 10th, 11th, 12th Grade

PREMIUM SCHEDULE

1ST	2ND	3RD	4TH	5TH
\$50	\$35	\$20	\$15	\$10

Supreme Champion will receive \$125

Reserve Supreme Champion will receive \$50

All prizes and ribbons will be presented as placing is announced. Premiums will be paid in cash on day of show. Please be sure your premiums are correct. No corrections will be made after day of show.

Open Breeding Hog Show
Showplace Arena Warm-Up Barn
Sunday, September 4, 2022
Judge: TBD

Questions or Concerns Contact: **Ann Johnson, Livestock Show Coordinator**
901-482-5951 or johnsona2@aol.com

ENTRY FORMS DUE: AUGUST 15

LATE ENTRIES WILL BE CHARGED DOUBLE ENTRY FEES.

Entries must be completed and fees and sent to Delta Agribusiness
P.O. BOX 1327, Cordova, TN 38088.

Sunday, September 4, 2022:

9:00 a.m. Breeding Hog Arrival Deadline

1:00 p.m. Open Breeding Hog Show

Supreme Champion Gilt at conclusion of Breed Shows
(Open Breeding Swine Released After Show)

1. All hogs should be on the grounds by 9:00 AM.
2. **Registration:** All animals must be registered in the owner's name at least 30 days prior to date of show and recorded in the recognized record book of the breed. Registration papers and health certificates will be checked. Failure to produce proper credentials will disqualify entry.
An exhibitor can enter a maximum of 2 entries in each individual class.
Registration papers will be checked on the day of the show. Lease agreements will not be accepted.
3. Gilts shown in Breeding Classes are not eligible for the Market Classes.
4. Breed divisions will be offered to the nine breeds with the largest representation and an all other breeds division.

Classes offered for gilts:

1. December Gilts (born Dec. 1, - Dec 31, last year)
2. January Gilts (born Jan 1 – Jan. 31, this year)
3. February Gilts (born Feb 1 – Feb. 28, this year)
4. March Gilts (born March 1 – March 31, this year)
5. April Gilts (born April 1 - April 30, this year)
6. Grand and Reserve Champion Gilt

PREMIUM SCHEDULE

1ST	2ND	3RD	4TH	5TH
\$50	\$35	\$20	\$15	\$10

Supreme Champion will receive \$125

Reserve Supreme Champion will receive \$50

1. Premier Breeder

Banner

2. Premier Exhibitor

Banner

Premier Breeder and Exhibitor- A winner will be determined by the exhibitor's placement in individual classes only, as follows: 3 points for 1st, 2 points for 2nd, and 1 point for 3rd. Maximum number of placements to be used to determine the winner shall be limited to the five that total the most number of points. In case of a tie, additional placements beyond 5 will be used until a winner is determined.

All prizes and ribbons will be presented as placing is announced. Premiums will be paid in cash on day of show. Please be sure your premiums are correct. No corrections will be made after day of show.

Junior Market Hog Show
Showplace Arena Warm-Up Barn
Monday, September 5, 2022 at 1:00 p.m.
Judge: TBA

Questions or Concerns Contact: **Ann Johnson, Livestock Show Coordinator**
901-482-5951 or johnsona2@aol.com

ENTRY FORMS DUE: AUGUST 15
LATE ENTRIES WILL BE CHARGED DOUBLE ENTRY FEES.

Entries must be completed online at www.deltafest.com and then fees sent to
Delta Agribusiness P.O. BOX 1327 Cordova, TN 38088.

<u>Weigh-In</u>	<u>Show Time</u>	<u>Release Time</u>
10:00 a.m. Monday	1:00 p.m. Monday	After Show Monday

Rule Requirements: Entries shall be subject to the General Livestock Rules and Regulations published in this Premium List and of this division.

Health Requirements: Health Certificates meeting requirements printed in the front part of this Premium List are required on all animals.

Rules and Regulations

1. Only Jr. Exhibitors will be allowed to enter and show. Competition is limited to peewees, 4-H members and FFA students who have not reached the end of the calendar year of their high school graduation or the end of the calendar year following their 19th birthday, whichever comes first. Those members who have completed one semester of college are ineligible. The exhibitors must be under the supervision of either an extension agent or agriculture teacher and be required to comply with all rules of the show. ***Junior Show participants are limited to the Delta Region including, Tennessee, Mississippi, Arkansas, Missouri and Kentucky.***
2. Market Hogs must be owned by the exhibitor by August 1, 2022.
3. Market Hogs must have an official veterinary inspection.
4. Only barrows and gilts are eligible for the market hog show.
5. There will be no minimum or maximum weight to be eligible to show.
6. There will be no sale in conjunction with the show.
7. Animals will be weighed and divided into classes by weight. There will be no more than 10 animals in a class.

There will be three showmanship awards and skill-a-thon award areas:

Junior 4th, 5th, 6th Grade
Junior High 7th, 8th, 9th Grade
Senior High 10th, 11th, 12th Grade

PREMIUM SCHEDULE				
1ST	2ND	3RD	4TH	5TH
\$50	\$35	\$20	\$15	\$10

Supreme Champion will receive \$125
Reserve Supreme Champion will receive \$50

All prizes and ribbons will be presented as placing is announced. Premiums will be paid in cash on day of show. Please be sure your premiums are correct. No corrections will be made after day of show.

One Day Poultry Show
Showplace Arena
Monday, September 5, 2022
Judge: TBD

Questions or Concerns Contact: **Ann Johnson, Livestock Show Coordinator**
901-482-5951 or johnsona2@aol.com

ENTRY FORMS DUE: AUGUST 15
LATE ENTRIES WILL BE CHARGED DOUBLE ENTRY FEES.

Entries must be completed online at www.deltafest.com and then fees sent to Delta Agribusiness P.O. BOX 1327 Cordova, TN 38088.

9:00 a.m.	Arrival Deadline (Showplace Arena)
10:00 a.m.	Judging Begins (Showplace Arena)
3:00 p.m.	All Animals Released

Health Requirements:

1. Health Certificates meeting requirements printed in the Tennessee Department of Agriculture Livestock Health Requirement for Fairs and Exhibitions are required on all animals.
2. All poultry must be free of disease, insects and open wounds or sores. Event Superintendent has the right to ask exhibitors to remove birds from the facility that they deem a safety risk for other birds or spectators.

Rule Requirements:

1. **ALL BIRDS MUST POSSESS A NUMBERED LEG OR WING BAND (INCLUDING NPIP FLOCKS) AND THIS BAND NUMBER SHOULD BE LISTED ON THE ENTRY FORM. ENTRIES WILL NOT BE ACCEPTED WITHOUT BAND NUMBERS ON ENTRY FORM.** This leg or wing band number should also be written on outside of shipping coop or on a tag attached to the coop.
2. **NO SUBSTITUTIONS** will be made on the day of the show. Entries will be judged as entered.
3. Exhibitors are responsible for feeding and watering their own birds until judging is completed. **WATER WILL BE AVAILABLE; HOWEVER, FEED WILL NOT BE PROVIDED.** Exhibitors are responsible for bringing their own feed.
4. One coop provided for each bird entered. No more than three (3) birds per cage. There will be a limit of 5 coops per exhibitor which can hold a maximum of 10 – 15 birds total.
5. This department will be conducted under the rules of the American Poultry Association. Birds will be judged by comparison method according to the American Standard of Perfection latest edition, Instructions to Judges, "For Economic Qualities of Standard-Bred Fowls." All poultry breeds are eligible to show in this show.
6. Judges are instructed to recognize those characteristics of body shape that are typical of a useful and productive fowl and give full consideration to those fundamental qualities of body type that are necessary to maintain vigor, usefulness and productiveness at the highest point consistent with true breed type.
7. Exhibitor may enter more than 2 entries per class.
8. No Poultry under 6 months allowed in show, except 4-H chick chain birds.
9. All entries will be judged by variety and breed. Classes are available for Open and Junior exhibitors. There must be a minimum of five (5) birds in the breed in order to qualify for a breed show. All breeds with less than five (5) birds will show in the Any Other Breeds (AOB) Division.
10. The Best of Variety and Reserve Best of Variety will compete for Best of Breed and Reserve Best of Breed.
11. Each Best of Breed is eligible to compete for Division Champion and Reserve Division Champion – these Division Champions will compete for the Grand and Reserve Grand Champions.
12. A "Best in Show" will be awarded from the Grand and Reserve Grand Champions.
13. Birds must be entered in their individual classes in order to compete for the Trio Classes.
14. The Fair Association is not liable for loss, damage, or injury to any exhibit or animal during the show.
15. All entries must be checked in by the superintendent upon arrival for pen assignments in the livestock office located in the Warm Up Barn.
16. Birds must remain on display in the showplace arena until 3 PM.

PREMIUM SCHEDULE				
1 ST	2 ND	3 RD	4 TH	5 TH
\$8	\$7	\$6	\$5	\$4

OFFICIAL CLASSES FOR VARIETIES

1. **Cock** - Male bird hatched prior to 2022.
2. **Cockerel** - Male bird hatched during 2022.
3. **Hen** -Female bird hatched prior to 2022.
4. **Pullet** -Female bird hatched during 2022.
5. **Young Trio** – One Cockerel and Two Pullets
6. **Mature Trio** – One Cock and Two Hens

THE FOLLOWING CLASSIFICATIONS WILL RECEIVE AWARDS AS DEFINED BELOW:

Best of Variety- \$5.00

Reserve Best of Variety- \$4.00

Best of Breed- \$5.00

Reserve Best of Breed- \$4.00

Division Champions- Rosette

Reserve Division Champions- Rosette

Grand Champion Large Fowl-Large Rosette

Reserve Grand Champion Large Fowl-Large Rosette

Grand Champion Trio in Large Fowl – \$5.00

Reserve Champion Trio in Large Fowl- \$4.00

Grand Champion Bantam- Large Rosette

Reserve Grand Champion Bantam-Large Rosette

Grand Champion Trio in Bantam-\$5.00

Reserve Champion Trio in Bantam- \$4.00

Best of Show (Individual)-\$25.00 and Banner

Reserve Best of Show (Individual)-\$20.00 and Banner

Best of Show Trio of Show- \$25.00 and Banner

Reserve Best of Show Trio of Show- \$20.00 and Banner

Premier Exhibitor - Banner

Open Breeding Sheep Show

Show Place Arena

Wednesday, September 7, 2022 and Thursday, September 8, 2022

Judge: TBD

Questions or Concerns Contact: **Ann Johnson, Livestock Show Coordinator**
901-482-5951 or johnsona2@aol.com

ENTRY FORMS DUE: AUGUST 15

LATE ENTRIES WILL BE CHARGED DOUBLE ENTRY FEES.

Entries must be completed online at www.deltafest.com and then fees sent to
Delta Agribusiness P.O. BOX 1327 Cordova, TN 38088.

WEDNESDAY, SEPTEMBER 7

10:00 a.m. Open Breeding Sheep Arrival DEADLINE

12:00 noon	Katahdin Breeding Sheep Show	Showplace Arena
1:00 p.m.	Natural Colored Breeding Sheep Show	Showplace Arena
2:00 p.m.	Dorset Breeding Sheep Show	Showplace Arena
3:00 p.m.	AOB Wool Breeding Sheep Show	Showplace Arena
4:00 p.m.	Tunis Breeding Sheep Show	Showplace Arena
5:00 p.m.	Dorper Breeding Sheep Show	Showplace Arena
6:00 p.m.	Supreme Champion Ram and Ewe	Showplace Arena

THURSDAY, SEPTEMBER 8

8:00 a.m.	Open Breeding Sheep Arrival DEADLINE	Workout Barn
10:00 a.m.	Shropshire Breeding Sheep Show	Showplace Arena
12:00 noon	Southdown Breeding Sheep Show	Showplace Arena
2:00 p.m.	Hampshire Breeding Sheep Show	Showplace Arena
4:00 p.m.	AOB Meat Breeding Sheep Show	Showplace Arena
6:00 p.m.	Supreme Champion Ram and Ewe	Showplace Arena

Rule Requirements: Entries shall be subject to the General Livestock Rules and Regulations published in this Premium List and of this division.

Health Requirements: Health Certificates meeting requirements printed in the front part of this Premium List are required on all animals.

Rules and Regulations:

1. Registration: All animals must be registered in the owner's name at least 30 days prior to date of show and recorded *in the recognized record book of the breed*. Registration papers and health certificates will be checked. Failure to produce proper credentials will disqualify entry.

An exhibitor can enter a maximum of 2 entries in each individual class.

An exhibitor can enter a maximum of 2 yearling ewes/breed.

An exhibitor can enter a maximum of 1 entry in group classes.

Exhibitors are limited to 2 breeds.

Registration papers will be checked on the day of the show. Lease agreements will not be accepted.

Open Breeding Sheep Show (cont.) Wednesday, Sept 7 & Thursday, Sept 8

- 2. Definition of Classifications:** September 1 is the base date for computing ages of sheep. Lambs must have all lamb teeth. After the lamb classes, recognize the certificate of registration of each animal to determine age. Animals must be entered in the correct age class. Entries that have been erroneously entered will be transferred to their proper class prior to judging. Premier exhibitor will be the exhibitor winning the most money in each breed (not counting group money). Winner of the flock will break tie.
- 3.** Ewes shown in market or commercial classes are not eligible for breeding classes.
- 4.** All fees must accompany applications and no entries will be accepted or recorded and no pen reservation made unless proper fees are received with entries.
- 5.** Pens will be assigned by Delta Fair committee and personnel.

OPEN SHEEP PREMIUM SCHEDULE

1 ST	2 ND	3 RD	4 TH	5 TH
\$50	\$35	\$20	\$15	\$10

Ram Classes:

1. Sr. Ram Lamb (September 1 - December 31, 2021)
2. Early Jr. Ram Lamb (January 1 - February 14, 2022)
3. Late Jr. Ram Lamb (February 15, 2022 and After)
4. Pair Ram Lambs (From Lots 1-3)
 - Grand Champion Ram Rosette
 - Grand Reserve Champion Ram Rosette

Ewe Classes:

5. Sr. Yearling Ewes (September 1 – January 31, 2021)
 6. Jr. Yearling Ewes (February 1 - August 30, 2021)
 7. Pair Yearling Ewes (from Lots 5-6)
 8. Senior Ewe Lambs (September 1 - December 31, 2022)
 9. January Ewe Lambs (January 1 - January 31, 2022)
 10. February Ewe Lambs (February 1 - February 28, 2022)
 11. March Ewe Lambs (March 1 - March 31, 2022)
 12. Pair Ewe Lambs (from Lots 8-11)
 - Grand Champion Ewe Rosette
 - Grand Reserve Champion Ewe Rosette
 13. Pen of 4 Lambs (Both sexes represented; from Lots 1-3 & 8 -11)
 14. Flock (1 Ram, 2 Yearling Ewes, 2 Ewe Lambs)
- Overall Supreme Champion Ewe - \$125 and banner and Overall Reserve Champion - \$50
Overall Supreme Champion Ram - \$125 and banner and Overall Reserve Champion - \$50

All prizes and ribbons will be presented as placing is announced. Premiums will be paid in cash on day of show. Please be sure your premiums are correct. No corrections will be made after day of show.



We would like to thank all the parents, teachers and volunteers who support our youth in their agricultural pursuits – for their countless hours, spent day in and day out, helping our youth be the best they can be.

Junior Breeding Sheep Show

Showplace Arena

Friday, September 9, 2022

Judge: TBD

Questions or Concerns Contact: **Ann Johnson, Livestock Show Coordinator**
901-482-5951 or johnsona2@aol.com

ENTRY FORMS DUE: AUGUST 15

LATE ENTRIES WILL BE CHARGED DOUBLE ENTRY FEES.

Entries must be completed online at www.deltafest.com and then fees sent to
Delta Agribusiness P.O. BOX 1327 Cordova, TN 38088.

FRIDAY, SEPTEMBER 9

8:00 a.m.	Jr. Breeding Sheep Arrival DEADLINE		Workout Barn
9:00	Junior Sheep Showmanship		Showplace Arena
	Ring A	Ring B	
	10 TH Grade	PeeWee	
	11th Grade	4-6 th Grade	
	12 Th Grade	7-9 th Grade	
10:00 a.m.	AOB Meat	Dorper	Showplace Arena
12:00 noon	Hampshire	Tunis	Showplace Arena
1:00 p.m.	Hampshire (Cont.)	AOB Wool	Showplace Arena
2:00 p.m.	Southdown	Dorset	Showplace Arena
3:00 p.m.	Southdown (Cont.)	Natural Color	Showplace Arena
4:00 p.m.	Shropshire	Katahdin	Showplace Arena
6:00 p.m.	Supreme Champion Ram and Ewe		Showplace Arena

(Jr. Breeding Sheep Released After Show)

Rule Requirements: Entries shall be subject to the General Livestock Rules and Regulations published in this Premium List and of this division.

Health Requirements: Health Certificates meeting requirements printed in the front part of this Premium List are required on all animals.

Rules and Regulations:

Registration: All animals must be registered in the owner's name at least 30 days prior to date of show and recorded in the recognized record book of the breed. Registration papers and health certificates will be checked. Failure to produce proper credentials will disqualify entry.

An exhibitor can enter a maximum of 2 entries in each individual class.

An exhibitor can enter a maximum of 2 yearling ewes/breed.

An exhibitor can enter a maximum of 1 entry in group classes.

Exhibitors are limited to 2 breeds.

Registration papers will be checked on the day of the show. Lease agreements will not be accepted.

- Definition of Classifications:** September 1 is the base date for computing ages of sheep. Lambs must have all lamb teeth. After the lamb classes, recognize the certificate of registration of each animal to determine age. Animals must be entered in the correct age class. Entries that have been erroneously entered will be transferred to their proper class prior to judging. Premier exhibitor will be the exhibitor winning the most money in each breed (not counting group money). Winner of the flock will break tie.
- Only Jr. Exhibitors will be allowed to enter and show. Competition is limited to peewees, 4-H members and FFA students who have not reached the end of the calendar year of their high school graduation or the end of the calendar year following their 19th birthday, whichever comes first. Those members who have completed one semester of college are ineligible. The exhibitors must be under the supervision of either an extension agent or agriculture teacher and be required to comply with all rules of the show. ***Junior Show participants are limited to the Delta Region including, Tennessee, Mississippi, Arkansas, Missouri and Kentucky.***

3. Ewes shown in market or commercial classes are not eligible for breeding classes.
4. All fees must accompany applications and no entries will be accepted or recorded and no pen reservation made unless proper fees are received with entries.
5. Pens will be assigned by Delta Fair committee.

JUNIOR SHEEP PREMIUM SCHEDULE

1 ST	2 ND	3 RD	4 TH	5 TH	6 TH	7 TH	8 TH
\$35	\$20	\$15	\$15	\$15	\$10	\$10	\$10

Breeds:

Lot 21 - Southdown

Lot 22 - Natural Colored

Lot 23 - Dorset

Lot 24 - Hampshire

Lot 25 - Shropshire

Lot 26 - All Other Breeds Meat

Lot 27 - All Other Breeds Wool

Lot 28 - All Other Breeds Hair

Ram Classes:

1. Sr. Ram Lamb (September 1 - December 31, 2021)

2. Early Jr. Ram Lamb (January 1 - February 14, 2022)

3. Late Jr. Ram Lamb (February 15, 2022 and After)

4. Pair Ram Lambs (From Lots 1-3)

Grand Champion Ram

Rosette

Grand Reserve Champion Ram

Rosette

Ewe Classes:

5. Sr. Yearling Ewes (September 1 – January 31, 2021)

6. Jr. Yearling Ewes (February 1 - August 30, 2021)

7. Pair Yearling Ewes (from Lots 5-6)

8. Senior Ewe Lambs (September 1 - December 31, 2021)

9. January Ewe Lambs (January 1 - January 31, 2022)

10. February Ewe Lambs (February 1 - February 28, 2022)

11. March Ewe Lambs (March 1 - March 31, 2022)

12. Pair Ewe Lambs (from Lots 8-11)

Grand Champion Ewe

Rosette

Grand Reserve Champion Ewe

Rosette

13. Pen of 4 Lambs (Both sexes represented; from Lots 1-3 & 8 -11)

14. Flock (1 Ram, 2 Yearling Ewes, 2 Ewe Lambs)

Overall Supreme Champion Ewe - \$125 and banner and Overall Reserve Champion - \$50

Overall Supreme Champion Ram - \$125 and banner and Overall Reserve Champion - \$50

There will be three showmanship and skill-a-thon award areas:Junior 4th, 5th, 6th GradeJunior High 7th, 8th, 9th GradeSenior High 10th, 11th, 12th Grade**SHOWMANSHIP AND SKILL-A-THON PREMIUM SCHEDULE**

1 ST	2 ND	3 RD	4 TH	5 TH
\$50	\$35	\$20	\$15	\$10

All prizes and ribbons will be presented as placing is announced. Premiums will be paid in cash on day of show. Please be sure your premiums are correct. No corrections will be made after day of show.

Market Lamb & Commercial Ewe Show

Warm-Up Barn

Saturday, September 10, 2022 - 9:00 a.m.

Judge: TBA

Questions or Concerns Contact: **Ann Johnson, Livestock Show Coordinator**
901-482-5951 or johnsona2@aol.com

ENTRY FORMS DUE: AUGUST 15

LATE ENTRIES WILL BE CHARGED DOUBLE ENTRY FEES.

Entries must be completed online at www.deltafest.com and
fees sent to Delta Agribusiness P.O. BOX 1327 Cordova, TN 38088.

SATURDAY, SEPTEMBER 10

11:00 a.m.	Junior Market Lamb Weigh-in DEADLINE	Warm-Up Barn
1:00 p.m.	Junior Market Lamb/Commercial Ewe Showmanship	Warm-Up Barn
2:00 p.m.	Junior Market Lamb Show	Warm-Up Barn
3:00 p.m.	Commercial Ewe Show <i>(Market Lambs and Commercial Ewes released after Commercial Ewe Show)</i>	Warm-Up Barn

Rule Requirements: Entries shall be subject to the General Livestock Rules and Regulations published in this Premium List and of this division

Health Requirements: Health Certificates meeting requirements printed in the front part of this Premium List are required on all animals.

Rules and Regulations

1. Only junior exhibitors will be allowed to enter and show. Competition is limited to peewees, 4-H members and FFA students who have not reached the end of the calendar year of their high school graduation or the end of the calendar year following their 19th birthday, whichever comes first. Those members who have completed one semester of college are ineligible. The exhibitors must be under the supervision of either an extension agent or agriculture teacher and be required to comply with all rules of the show. ***Junior Show participants are limited to the Delta Region including, Tennessee, Mississippi, Arkansas, Missouri and Kentucky.***
2. Market lambs must be owned by the exhibitor by August 1, 2022.
3. Market lambs must have an official veterinary inspection.
4. All lambs must have lamb teeth and must be Wether or Ewe Lambs.
5. There will be no minimum or maximum weight to be eligible to show.
6. There will be not be a sale in conjunction with the show.
7. Market Lambs will be assigned to classes based on weight and face color.
8. There will be no more than 5 animals in a class.

MARKET LAMB PREMIUM SCHEDULE

1ST	2ND	3RD	4TH	5TH
\$50	\$35	\$20	\$15	\$10

Market Lamb & Commercial Ewe Show (cont.) Saturday, Sept 10, 2022

COMMERCIAL EWE SHOW

1. Open to non-registered ewes of any breed or combination of breeds.
2. Ewes shown in the commercial ewe show are not eligible to show in either the registered ewe show or the market lamb show.
3. Exhibitor may show a maximum of 2 yearling ewes and 2 ewe lambs.
Only Jr. Exhibitors will be allowed to show.
4. Ewes must be owned by the exhibitor by August 1, 2022.
5. Ewes must have an official veterinary inspection.
6. All lambs must have lamb teeth.
7. Animals will be weighed and divided into classes by weight. There will be no more than 10 animals in a class.
8. Yearling Ewes will be divided based on weight in separate yearling classes.

There will be three showmanship awards and skill-a-thon award areas:

Junior 4th, 5th, 6th Grade

Junior High 7th, 8th, 9th Grade

Senior High 10th, 11th, 12th Grade

COMMERCIAL EWE PREMIUM SCHEDULE

1ST	2ND	3RD	4TH	5TH
50	\$35	\$20	\$15	\$10

Supreme Champion will receive \$125

Reserve Supreme Champion will receive \$50

Market and Commercial will compete

All prizes and ribbons will be presented as placing is announced. Premiums will be paid in cash on day of show. Please be sure your premiums are correct. No corrections will be made after day of show.

Delta Fair & Music Festival welcomes Belle City Amusements
back to the Delta Fair Midway.



MEAT GOAT SHOW

Warm-Up Barn

Sunday, September 11, 2022

Judges: TBA

Questions or Concerns Contact: Ann Johnson, Livestock Show Coordinator
901-482-5951 or johnsona2@aol.com

ENTRY FORMS DUE: AUGUST 15

LATE ENTRIES WILL BE CHARGED DOUBLE ENTRY FEES.

Entries must be completed online at www.deltafest.com and then fees sent to Delta Agribusiness P.O. BOX 1327 Cordova, TN 38088.

SUNDAY, SEPTEMBER 11

11:00 a.m.	Boer Goat Arrival DEADLINE	Warm-Up Barn
1:00 p.m.	Junior Goat Showmanship	Warm-Up Barn
2:00 p.m.	Junior Market Goat Show	Warm-Up Barn
3:00 p.m.	Junior Commercial Doe Show	Warm-Up Barn
3:30 p.m.	Junior & Open Registered Boer Goat Show	Warm-Up Barn
4:30 p.m.	Open Commercial Doe Show	Warm-Up Barn
	<i>(All Goats must be removed immediately After Show)</i>	
5:00 p.m.	Workout & Warm-Up Barn Take Down <i>(All Goats Must Be Removed)</i>	

MARKET & COMMERCIAL RULES:

1. There will be two (3) divisions of goats shown: market goats, commercial does, and registered breeding goats. Any breed or crossbreed of goat can show in the Market Show and Commercial Doe Show and will be shown by weights. Does can be shown in either the Junior Market Goats Show or the Junior Commercial Doe Show but NOT in both Junior Shows. However, a doe can show in either Junior show and then again in the Open Commercial Doe show. There will be no minimum weight. Each exhibitor is limited to two animals per class.
2. Wether kids must not exhibit any testicular tissue. Animals having this will be dismissed.
3. Wether kids and doe kids must have all milk teeth at weigh-in.
4. All goats must have some type of identification (ear tag in either left or right ear.) Tags tied to a collar is not acceptable.
5. All goats will be weighed and classes divided by weight in each of the three divisions of the market show. (ex. If there are 40 lightweight market goats we will divide this class in to two separate classes.)

CLASS 1 - MARKET CLASSES

- Lot 10. Light Weight (maximum of 5 per class)
- Lot 11. Medium Weight (maximum of 5 per class)
- Lot 12. Heavy Weight (maximum of 5 per class)
- Lot 13. Champion Market Goat
- Lot 14. Reserve Champion Market Goat

MEAT GOAT SHOW (cont.) Sunday, September 11, 2022

CLASS 2 – COMMERCIAL DOE CLASSES

Lot 10. Light Weight (maximum of 5 per class)

Lot 11. Medium Weight (maximum of 5 per class)

Lot 12. Heavy Weight (maximum of 5 per class)

Lot 13. Champion Commercial Doe

Lot 14. Reserve Champion Commercial Doe

REGISTERED BOER GOAT RULES:

1. All goats must be appropriately identified and comply with USDA Scrapie Eradication Program Guidelines. Call 1-888-USDA TAG (873-2824) or visit the following website for more information: http://www.aphis.usda.gov/animal_health/animal_diseases/scrapie/
2. All goats must be registered in the ABGA herd book by August 1.
3. Original registration certificates are required, except that a copy of a registration application, stamped with the date received by one of the listed associations, can be accepted for kids less than 3 months of age. Animals over the age of 3 months must have the original registration certificate in hand at time of show.
4. Tattoos - All goats must have legible tattoos consistent with the registration certificate or the animal will be disqualified. If an animal is disqualified due to illegible or inconsistent tattoos, all lower placing animals will be moved up in placement. Winners from each class must have their tattoos read and recorded.
5. Computing Ages - Birth dates, as listed on the registration certificate, will be used in determining class divisions. In order to calculate the class breaks, take the show date and count back to the birth date to determine the age and the class for the animal.

Disqualification

Any pronounced defect or abnormality.

Tattoos that are illegible or inconsistent with the registration certificate.

Acceptable Practices and Substances.

Should any animal that has been awarded a prize be disqualified before its class has been dismissed from the show ring, the lower placing animals shall move up to fill the vacancy. Should any animal be disqualified after the class has been dismissed from the show ring, the lower placing animals will not move into any higher position.

Unacceptable Practices and Substances

No person shall conspire with another person or persons to intentionally violate, or knowingly contribute or cooperate with another person or persons either by affirmative action or inaction to violate any part of these Rules & Regulations.

Attaching any objects, including hair or hair substitutes, cloth, or fiber to the animal for the purpose of deception.

Permitted Practices and Substances

Drenches as needed, and as directed on the label, for animal health and well-being. Drugs and other substances labeled for use in goats to treat health issues in an exhibited goat.

Any extra-label usage requires a prescription, or statement for use from the attending veterinarian. Grooming products that are not restricted from use in meat producing animals, including: brushes, combs, clippers, hoof trimmers, shampoos, conditioners, oils, mousse, alcohol/liniment, sprays, and powders.

MEAT GOAT SHOW (cont.) Sunday, September 11, 2022

CLASS 3 – REGISTERED BOER GOAT CLASSES

LOT 1	Doe Kids 0 – under 3 months (milk teeth only)	
LOT 2	Doe Kids 3 – under 6 months (milk teeth only)	
LOT 3	Doe Kids 6 – under 9 months (milk teeth only)	
LOT 4	Doe Kids 9 – under 12 months (milk teeth only)	
	Junior Division Grand Champion	Rosette
	Junior Division Reserve Grand Champion	Rosette
LOT 5	Yearling Does 12 – under 16 months	
LOT 6	Yearling Does 16 – under 20 months	
LOT 7	Yearling Does 20- under 24 months	
	Yearling Division Grand Champion	Rosette
	Yearling Division Reserve Grand Champion	Rosette
LOT 8	Aged Does 24 – under 36 months	
LOT 9	Aged Does 36 months and up	
	Senior Division Grand Champion	Rosette
	Senior Division Reserve Grand Champion	Rosette
LOT 10	Buck Kids 0 – under 3 months (milk teeth only)	
LOT 12	Buck Kids 3 – under 6 months (milk teeth only)	
LOT 13	Buck Kids 6 – under 9 months (milk teeth only)	
LOT 14	Buck Kids 9 – under 12 months (milk teeth only)	
	Junior Division Grand Champion	Rosette
	Junior Division Reserve Grand Champion	Rosette
LOT 15	Yearling Buck 12 – under 16 months	
LOT 16	Yearling Buck 16 – under 20 months	
LOT 17	Yearling Buck 20- under 24 months	
	Yearling Division Grand Champion	Rosette
	Yearling Division Reserve Grand Champion	Rosette
LOT 18	Aged Buck 24 – under 36 months	
LOT 19	Aged Buck 36 months and up	
	Senior Division Grand Champion	Rosette
	Senior Division Reserve Grand Champion	Rosette

There will be three showmanship awards and skill-a-thon award areas:

Junior 4th, 5th, 6th Grade
Junior High 7th, 8th, 9th Grade
Senior High 10th, 11th, 12th Grade

PREMIUM SCHEDULE

1ST	2ND	3RD	4TH	5TH
\$50	\$35	\$20	\$15	\$10

Supreme Champion will receive \$125

Reserve Supreme Champion will receive \$50

Market, Commercial and Registered Champions Competing

All prizes and ribbons will be presented as placing is announced. Premiums will be paid in cash on day of show. Please be sure your premiums are correct. No corrections will be made after day of show.

Summary of Tennessee Fair Regulations - health requirements for livestock at fairs and exhibitions.

1. It is expected that all exhibitors will bring only healthy animals to fairs and exhibitions. Although state and federal animal health officials will be performing some inspections, **fair officials are responsible** for ensuring that all animals entering fairs for exhibition are in overall good health and are accompanied by a Certificate of Veterinary Inspection. Animals showing clinical signs of contagious disease should be sent home immediately. Violations should be reported to the state veterinarian or his agent.
2. Certificate(s) of Veterinary Inspection are to accompany all animal(s) to the respective shows with the exception of in-state Tennessee equine and poultry. In-state Tennessee equine six (6) months of age and older must have a negative Equine Infectious Anemia test within the preceding twelve (12) months. Poultry assembled at shows or exhibitions should be accompanied by evidence of a negative test for Pullorum-Typhoid within 90 days, or **be tested on-site prior to exhibition following strict biosecurity procedures**, or originate directly from a flock which has been certified as Pullorum-Typhoid Clean under the Tennessee Poultry Improvement Plan. As part of increased awareness and surveillance for Avian Influenza and other poultry diseases, all bird's physical appearance should be assessed at the time testing is conducted.
3. Health certificates issued in satisfaction of these Tennessee Fair Regulations shall be good for **90** days for Tennessee livestock only.
4. Please note that exhibition requirements for out-of-state livestock are the same as regular import requirements.
5. **Warts and ringworm are considered contagious and infectious diseases and are permissible exclusions only if considered inactive by the issuing veterinarian and noted as such on the Certificate of Veterinary Inspection.**
6. **Scabies, contagious ecthyma (soremouth), footrot, cutaneous fungal and bacterial infections (i.e. club lamb disease, caseous lymphadenitis) are considered contagious and infectious diseases, and are permissible exclusions only if considered inactive by the issuing veterinarian and noted as such on the Certificate of Veterinary Inspection.**
7. **Avian Influenza – All out-of-state poultry must originate directly from a Pullorum-Typhoid Clean Flock and a H5/H7 Avian Influenza Clean Flock, or be accompanied by evidence of a negative Pullorum-Typhoid test within ninety (90) days and a negative official Avian Influenza test within twenty-one (21) days.**

Thank you, Dr Charles Hatcher,
TN Commissioner of Agriculture
for your support of
Delta Agribusiness Livestock Shows
at Delta Fair & Music Festival.

Senior American Day flyer goes on this page

Delta Agribusiness Store

T-shirts, visors, hats

diapers, wet wipes, lotion

Tylenol, Advil, Zantac, Tums

band aids, Neosporin, chapstick

maxi-pads, tampax, scrunchies

sun screen, aloe vera, Off

Benadryl, gas relief, anti-itch cream

nail clippers, tweezers, & more

Visit us inside the Agricenter in the Crafts &
Culinary area, in the West Pavilion!