

2019
DESERT EMPIRE FAIR
OCTOBER 18-20

“FAMILY FUN, FOOD & FARM ANIMALS”



Photos by PJ ORIGINALS

Desert Empire Fairgrounds & Event Center
520 Richmond Road
Ridgecrest, California 93555
760-375-8000
www.desertempirefair.com
chip@desertempirefair.com



53rd District Agricultural Association
Kern, Inyo, Los Angeles, and San Bernardino Counties

Executive Director

Marshall "Chip" Holloway

President

Darrell Eddins

Vice President

Howard Laire

Directors

Catherine Rogers Doug Lueck Jim Kight
Bob Beecroft Ray Hocker

Livestock Superintendent

Curtis Moore

Still Exhibits Director/Supervisor

Pam Todd

Floriculture/Horticulture Chairmen / Consultants

Wanda Hewett Merrilee Ray, Terry Fairfield, Ann Richardson,
Judy Dietrichson



760-375-8000 FAX 760-375-8134

chip@desertempirefair.com

www.desertempirefair.com



JOIN US FOR THE DESERT EMPIRE FAIR

October 18-20, 2019

Hours

Friday:

Senior Day - ages 65+ FREE

Hours of Operation: 4pm – Midnight

Saturday:

Hours of Operation: Noon – Midnight

Sunday:

Kids Day - ages 12 & under FREE

Hours of Operation: Noon – 10pm

Admission

Adults 13+.....	\$8.00	Children 6 – 12...	\$4.00
Seniors 65+.....	\$4.00	Ages 5 and under.....	Free
Active Military.....	...	\$4.00	



CALIFORNIA DEPARTMENT OF
FOOD & AGRICULTURE

Karen Ross, Secretary

February 15, 2019

California Fairs are all about showcasing the local community and its talents. Nowhere else can you participate in an event that builds community pride while providing an interactive and educational experience. Our facilities are central to our agricultural and multi-cultural communities.

However, California's fairgrounds mean so much more to their communities than just a celebratory week or two. They are key pieces in our work to create a California for all; rich with tradition for families in urban and rural communities.

Through fairs and our fairgrounds, our communities and local talent have an opportunity to put their best foot forward. The annual fair provides a venue for all cultures to come together to showcase one-of-a-kind exhibits, exchange ideas, share new creations, and learn more about the bounty of California agriculture.

Fairs provide an opportunity to show-and-tell the story of farming, livestock, and community diversity to an audience that may not often think about what agriculture means beyond the pristine produce available at the local supermarket. In the best of years, we would close each fair with a sense of satisfaction and optimism as we look forward to future exhibits and events. We also remember the essential role that fairground staff, volunteers, farmers and ranchers, and emergency response personnel have played in recent rescue and recovery activities.

Thank you for the role you play in creating a community event that is full of fun, memorable, and educational moments, all the while providing a safe haven for those affected by fires and natural disasters.

Yours truly,

Karen Ross
Secretary



Desert Empire Fairgrounds & Event Center
520 S. Richmond
Ridgecrest, CA 93555
(760) 375-8000

Directions:

From Lancaster / Palmdale:

- 1) North on Hwy 14
- 2) East on Hwy 178 (towards Ridgecrest/Inyokern)
- 3) Travel appx. 10 miles on Hwy 178 (Inyokern Rd)
- 4) Turn right onto China Lake Blvd. (south)
- 5) Travel appx. 3 miles on China Lake (south)
- 6) Turn left onto Ridgecrest Blvd (Hwy 178 E)
- 7) Turn right onto Richmond Road
- 8) Pass the main fairground entrance and turn left at the Livestock entrance sign.

From Bakersfield:

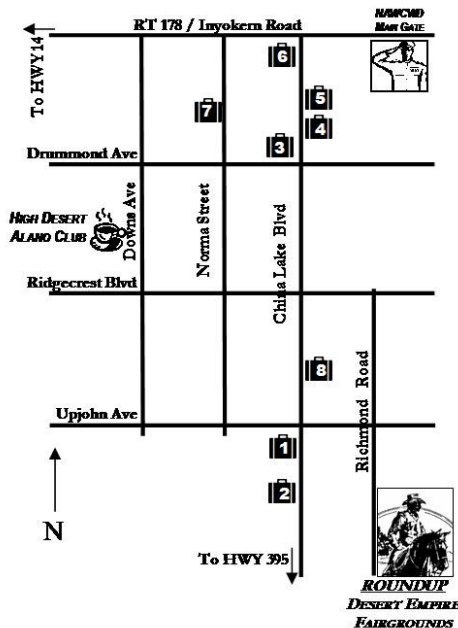
- 1) Take Hwy 58 east to Hwy 14
- 2) North on Hwy 14
- 3) East on Hwy 178 (towards Ridgecrest/Inyokern)
- 4) Travel appx. 10 miles on Hwy 178 (Inyokern Rd)
- 5) Turn right onto China Lake Blvd. (south)
- 6) Travel appx. 3 miles on China Lake (south)
- 7) Turn left onto Ridgecrest Blvd (Hwy 178 E)
- 8) Turn right onto Richmond Road
- 9) Pass the main fairground entrance and turn left at the Livestock entrance sign.

From Apple Valley/Barstow:

- 1) Take Hwy 395 north
- 2) Turn on the China Lake Blvd exit (towards Ridgecrest)
- 3) Take China Lake Blvd north appx. 3-4 miles
- 4) Turn right on Ridgecrest Blvd. (Hwy 178 east)
- 5) Turn right onto Richmond Road
- 6) Pass the main fairground entrance and turn left at the Livestock entrance sign.

RV PARK INFORMATION: Please call the fair office @ (760) 375-8000

MOTEL Information:



Ridgecrest Motel Directory

QUALITY INN ①
507 S. China Lake Blvd.
760/375-9731

Carriage Inn ③
901 N. China Lake Blvd.
760/446-7910

Hampton Inn ⑤
104 E. Sydnor Ave.
760/446-1968

Econo Lodge ⑥
201 Inyokern Road
760/446-2551

Springhill Suites ④
113 E. Sydnor Ave.
760/446-1630

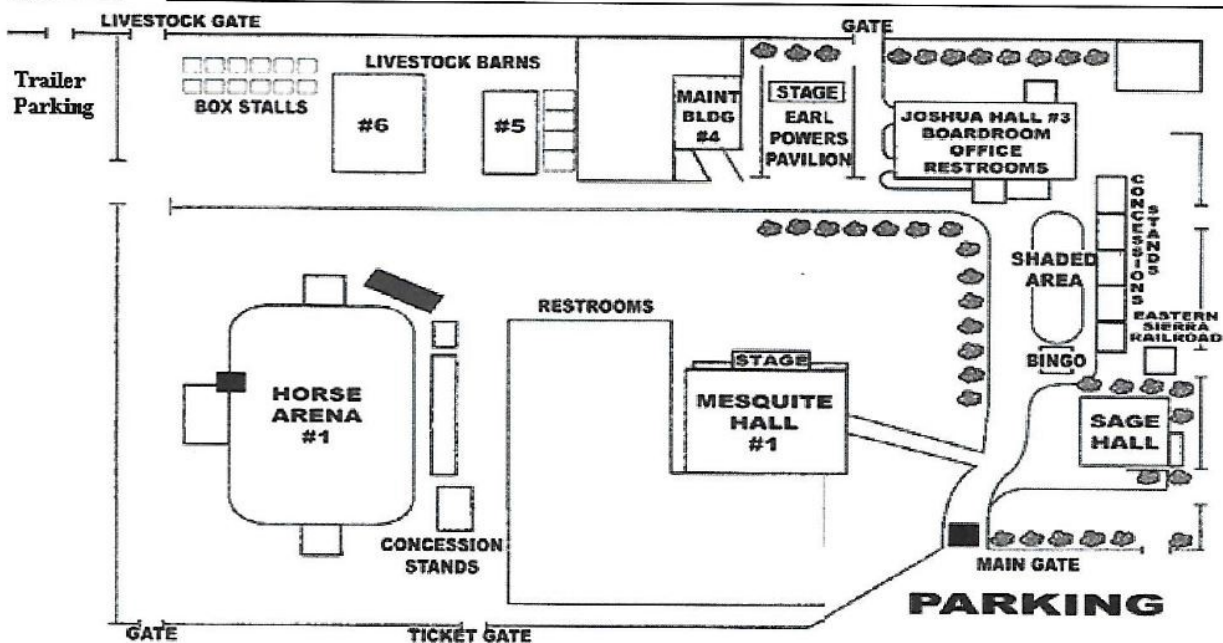
Heritage Inn ⑦
1050 N. Norma St.
760/446-6543

Best Western
China Lake Inn ⑧
400 S. China Lake Blvd.
760/371-2300

Motel 6 ②
535 S. China Lake Blvd.
760/375-6866

RV Park On Site
Call 760/375-8000
for reservations

DESERT EMPIRE FAIRGROUNDS



SCHEDULE FOR ENTRIES

Category	Entry Form Due	Bring in Entries		Bring To	Pick Up Exhibits
Still Exhibits					SAGE HALL
Quilts	September 21	September 25 th & 26th Noon-5 pm		Joshua Hall Boardroom	October 21 11 am-6 pm
Preserved Foods	September 21	October 8 October 9	11-6 pm 11-6 pm	*Desert Valley Credit Union Community Center	October 21 11 am-6 pm
Clothing & Textiles	September 21	October 8 October 9	11-6 pm 11-6 pm	Desert Valley Credit Union Community Center	October 21 11 am-6 pm
Arts & Crafts	September 21	October 8 October 9	11-6 pm 11-6 pm	Desert Valley Credit Union Community Center	October 21 11 am-6 pm
Fine Arts - Creative Writing	September 21	October 8 October 9	11-6 pm 11-6 pm	Desert Valley Credit Union Community Center	October 21 11 am-6 pm
Photography	September 21	October 8 October 9	11-6 pm 11-6 pm	Desert Valley Credit Union Community Center	October 21 11 am-6 pm
Table Placings	September 21	October 16th	2-6 pm	Sage Hall	October 21 11 am-6 pm
Collections	September 21	October 16th	2-6 pm	Sage Hall	October 21 11 am-6 pm
Baked Goods	September 21	October 16	2-7 pm	Sage Hall	October 21 11 am-6 pm
Special Contests	See Special Contest Pages	See Special Contest Pages		Sage Hall	October 21 11 am-6 pm
Lego Contest	September 21	October 19 1:00		Sage Hall	Immediately After Judging
2018 FAIR TIME PHOTO CONTEST	photos are brought in daily during fair	Daily when building is open		Sage Hall	October 22 11 am-6 pm
Floriculture and Horticulture	October	October October	1-4:30 pm 8-10 am	Mesquite Hall	October 8- 9 am

*Desert Valley Credit Union Community Center formally known as Mesquite Hall

How Do I Enter the Fair?

It's as easy as A-B-C-D!

A. First, look online at desertempirefair.com and go to the Exhibitor Guidebook to see what areas you want to enter.

B. After you have found your areas, carefully read the Rules for those areas, plus the Local Rules. State Rules are online.

C. Fill out an entry form. Forms can be found at the Fair Office (520 S. Richmond Road, Ridgecrest) or online at desertempirefair.com in the Guidebook section. Note that separate forms are needed for some Departments, such as Floriculture and Horticulture, Livestock, and Special Contests.

D. Check to make sure you have the right Division and Class numbers.

If you have questions or need help, call the Fair Office at 760-375-8000 or contact Pam Todd at: pam@desertempirefair.com Read the Liability Notice at the bottom of the entry form and sign the form.

Parents or guardians and the entrants must sign the Junior entry forms. Ages of Juniors must also be on the forms.

Enclose a check for any entry fees required. There are no fees for Junior or 4-H/Youth/Scout entries.

Return the completed entry form, with any required entry fees, to the office by the date listed for each area (Still Exhibits, Floriculture and Horticulture, and Livestock have different deadlines).

Forms may be mailed or brought to 520 S. Richmond Road, or Submit your forms and payment online @ www.desertempirefair.com, for the Still Exhibits Section, click on the fair fun link, information, and then still exhibits link. Ridgecrest, CA 93555.

ENTRY FORM DEADLINE : SEPTEMBER 21, 2019

Bring in the entries on the dates listed for each department. Check carefully, for they vary! Come to the fair and see if you've won any prizes and tell your friends! Pick up entries on Monday, Oct. 21. Be sure you have your claim check.

Adult Exhibitor of The YEAR

To be eligible for this ribbon, the exhibitor must enter and have judged at least five entries

These entries must come from at least four different categories:

Baked Food Preserved Foods Decorated Food Items

Fine Arts Quilting Creative Writing Photography

Arts & Crafts Collections Table Place Settings

Mini Photos and full-size photos count as one category, and entries in Special Contests are not eligible.

The winner will be determined by the accumulation of points. Points for each Placing: 1st = 5 points; 2nd = 3 points; 3rd = 1 point. In the case of a tie, the number of entries and the placings will determine the winner.

The more items entered, and the more ribbons received, the better the chances are of winning.

All eligible entrants will automatically be considered for this award



2019
DESERT EMPIRE FAIR
Fair Theme Photo
Contest
“Family Fun, Food & Farm Animals”

Do you have a favorite photo of the fair in the past three years, here's your chance to enter it in this years' Desert Empire Fairs' Still Exhibits.

All rules apply, please check the photo section of the guide book. Entries can be either 5x7 or 8x10 mounted on either flat board or matte mounted.

DIVISIONS

Juniors 288, 289

Adults 195,196,197,198, 199

Please fill out a separate entry form, they can be found in the guide book. Both junior and adult forms are available on our website.

ENTRY FORM DEADLINE IS SEPTEMBER 21, 2019

For more information please contact the fair office:

760-375-8000 or contact Pam Todd at:

pam@desertempirefair.com



Desert Empire Fair
Still Exhibits
October 18-20, 2019
“FAMILY FUN, FOOD & FARM ANIMALS”
CLASSROOM CHALLENGE

HISTORY SOCIAL SCIENCES ARTS LITERATURE
SCIENCE GROUP PROJECTS STEM PROJECTS

Here the chance for your class to shine at the
2019 Desert Empire Fair Still Exhibits.

There are four class sections:

DIVISON 278 – School Projects

1. 1st - 3rd grade
2. 4th - 5th grade
3. 6th - 8th grade
4. 9th – 12th grade

All project must be displayed on tables.

Must submit a complete writeup of project

All information for the youth section can be found under School and youth projects in the guidebook. Entry forms can be found and submitted online at:
www.desertempirefair.com. Entry form deadline is **September 21, 2019.**

Please contact Pam Todd for group project setup times.

If you have any question please email Pam Todd @ pam@desertempirefair.com



DESERT EMPIRE FAIR

STILL EXHIBITS

OCTOBER 18-20 2019

“Family Fun, Food & Farm Animals”

FROZEN T-SHIRT CONTEST



Do you like a challenge, then I have the one for you.

Try the Frozen T Shirt challenge. Any age can participate.
The first participant to thaw and put on a T-Shirt will win.

SUNDAY OCTOBER 20, 2019 3:00 pm at Sage Hall

SPONSORED BY TUTUS CATERING





LEGO CONTEST

For ALL Ages

Saturday. Oct. 19, 2019

1:00 p.m.

RULES

1. Entry form deadline is September 21, 2019, please submit a separate entry Form.
2. The completed model will admit the contestant to the fairgrounds between 12:00 and 12:30 p.m. on Sat Oct 19.
3. Bring entries to Sage Hall.
4. Entries may be no larger than 2' X 2' square. If a base is needed for transportation purposes include the overall dimensions on the entry form. excessive base size may disqualify the entry.
5. Entries are to be removed immediately after judging. **The Fair will not be responsible for entries left after the awards have been presented.**
6. Decisions of the judge will be final.

Judging: will be interactive. Each builder will be given the opportunity to explain to the judges the concept for the display and to point out any especially unique characteristics. The judges may, in turn, ask the builder about the display and the story behind the construction. Written (legible) descriptions of the entries may be submitted; oral description and questions will be allowed in addition to the written descriptions.

AWARDS: Ribbons for 1st, 2nd, and 3rd places, plus honorable Mentions, will be awarded according to the Danish System, with each entry being judged on its own merits. A "Best" overall ribbon may also be awarded.

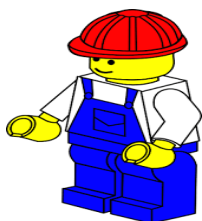
DIVISION

Juniors: 273 Class 5

Adults: 189 Class 11

FAIR THEME: "Family Fun, Food, & Farm Animals"

SPONSORED BY: FRIENDS OF THE FAIR



**2019
DESERT EMPIRE FAIR
OCTOBER 18-20
“Family Fun, Food, & Farm Animals”**



PAINTED ROCK CONTEST

To all the Rock Painters, here is your chance to share your creations in the Desert Empire Fairs Still Exhibits.

Here are the rules for entry:

1. Only four rocks per person.
2. There are two categories: Smaller than 6 inches and 6 inches or larger up to 10 inches. **(Please specify category on entry form)**
3. There is no cost for this contest.
4. Please submit a separate entry form for the rock contest. Entry forms are due **SEPTEMBER 21, 2019**
5. Please **NO FOUND ROCKS.**

6 DIVISIONS:

ADULT:	185.05	Any other
JUNIOR:	288.05	Painted Rock

Bring rock to Mesquite Hall, October 8th & 9th between 11:00 am and 6:00pm. Pick up rocks on October 21st from 11:00 am and 6:00pm in Sage Hall.

For more information check out the 2019 guide book @ desertempirefair.com this

**DESERT EMPIRE FAIR GROUNDS EVENT CENTER
520 RICHMOND ROAD, RIDGECREST CA.
760-375-8000 or Pam Todd at
pam@desertempirefair.com**

DESERT EMPIRE FAIR QUILT CHALLENGE

Fair Theme 2019: “Family Fun, Food & Farm Animals”

Use of Fair Theme is not Required

Challenge Fabric:

The challenge fabric is available at the Desert Empire Fair office, 520 Richmond Road, Ridgecrest, on a first come - first serve basis. An entry form must be completed and the fabric fee of \$3.00 paid when the fabric is picked up..

Entry information: Quilts must be delivered to the boardroom at the back of Joshua Hall between 11:00 a.m. and 5:00 p.m. on Sept.24, and Sept. 25, 2019

General Rules:

Quilts must be a minimum of 18”x18” and no larger than 30”x30”. Quilts may be any size and shape within these dimensions.

Quilt fronts must contain an easily recognized portion of the challenge fabric.

You may add as many other fabrics as you wish to the quilt.

The back of the quilt will not be judged. Backing fabric is of your own choice.

All quilts must be hand or machine-quilted.

A 4 inch sleeve must be added to the back of the quilt at the top. The sleeve will not be judged.

The quilt must be the work of one individual.

Use of Fair theme is not required, but a special “Use of Theme” ribbon may be awarded.

Awards

Ribbons for Judges Choice, 1st, 2nd, and 3rd places, plus Honorable mention, may be awarded.

In addition, a Viewers Choice will be given. Quilts will be judged on Creativity,

Quilting, Technique, and use of Color and Design.

Adults Division 98

Class 1 Any Challenge Quilt

Juniors Division 252

Class 5 Quilts

2019 CHALLENGE QUILT MATERIAL



For more info please contact Pam Todd at : pam@desertempirefair.com

ENTRY FORM DEADLINE: SEPTEMBER 21, 2019

ADULT BAKED FOODS

Sponsored by DESL

- **Entry Forms due Sep. 21, 2019**
- Enter online @ www.desertempirefair.com/fairfun/stillexhibits (you may also enter at the fair office).
- **Bring your entries to Sage Hall on Oct. 16, 2019 from 11am-6pm**
- Pick-Up your entries at Sage Hall on Mon. Oct. 21, 2019 from 11am-6pm
- Entry Fees:
 - \$2.00 per entry
 - \$1.00 per entry for Seniors
 - Free for Special Needs
- All entries must have the recipe included
- Recipes must be on an 8.5 x 11-inch paper
- Enter only the amount of food indicated
- Pies must be entered in clear, uncolored glass pie plates.
- Entries other than pies must be in disposable pans or containers or on white paper plates. **NO EXCEPTIONS...**
- All entries must be made from scratch – no mixes.
- Pie plates left at the fairgrounds longer than 7 days will be disposed of appropriately.
- Food will be disposed of at the end of fair.



DIVISION 100 – BREADS

½ loaf only + 1 slice wrapped separately

CLASS

- 1 Corn Bread
- 2 French Bread
- 3 Sourdough Bread
- 4 White Bread
- 5 Whole Wheat Bread
- 6 Banana Bread
- 7 Zucchini Bread
- 8 Any Bread from a Bread Maker
- 9 Any other Yeast Bread
- 10 Any other Quick Bread, Specify

DIVISION 101 – GLUTEN-FREE BAKING

CLASS

- 1 Yeast Bread – ½ loaf + 1 wrapped slice
- 2 Quick Bread – ½ loaf + 1 wrapped slice
- 3 Cake – ½ cake + 1 wrapped slice
- 4 Cupcakes – 4 cupcakes
- 5 Cookies – 6 cookies
- 6 Pies – 1 whole pie
- 7 Any Other, Specify

DIVISION 102 – BISCUITS AND ROLLS

6 items

CLASS

- 1 Biscuits, Any; Specify
- 2 Muffins, Any; Specify
- 3 Rolls, Any; Specify
- 4 Any other not listed; Specify



DIVISION 103 – CAKES

½ Cake Only + 1 slice wrapped separately

CLASS

- 1 Angel or Chiffon
- 2 Apple Cake
- 3 Applesauce Cake
- 4 Carrot Cake
- 5 Chocolate or Devil's Food Cake
- 6 White or Yellow Cake
- 7 Spice Cake
- 8 German Chocolate Cake
- 9 Upside Down Cake
- 10 Pound Cake
- 11 Any Other Cake; Specify
- 12 Cupcakes – 6 cupcakes



DIVISION 104 – COOKIES

6 cookies

CLASS

- 1 Bar Cookies
- 2 Brownies
- 3 Cereal Cookies
- 4 Chocolate Chip Cookies
- 5 Chocolate Chip Oatmeal Cookies
- 6 Refrigerator Cookies
- 7 Peanut Butter Cookies
- 8 Hand-Shaped Cookies
- 9 Cut Out Cookies
- 10 Drop Cookies
- 11 Any Other Cookies; Specify



DIVISION 105 – PASTRIES

3 pastries

CLASS

- 1 Doughnuts, Any; Specify
- 2 Eclairs
- 3 Tart, Fruit, or Jelly-filled
- 4 Any other Pastry; Specify

DIVISION 106 – CONFECTIONS

7 pieces

CLASS

- 1 Nut Brittle
- 2 Hard Candy, Any
- 3 Fudge, Cooked
- 4 Fudge, Uncooked
- 5 Molded
- 6 Any other candy; Specify

DIVISION 107 – PIES

1 Pie

CLASS

- 1 Fruit Pie
- 2 Cream Pie
- 3 Meringue Pie
- 4 Chiffon Pie
- 5 Any other Pie; Specify



DIVISION 108 – OTHER BAKED GOODS

1 Pan

CLASS

- 1 Coffee Cake
- 2 Cheesecake
- 3 Buckles, Cobblers, etc.; Specify
- 4 Any other baked good; Specify

DIVISION 109 – SUGAR-FREE BAKING

CLASS

- 1 Cake – ½ cake + 1 wrapped slice
- 2 Cookies – 6 cookies
- 3 Pies – 1 whole pie
- 4 Candy – 4 pieces
- 5 Any Other; Specify

DIVISION 113 – BEGINNING DECORATED FOOD ITEMS

DIVISION 114 – ADVANCED DECORATED FOOD ITEMS

DIVISION 115 – PROFESSIONAL DECORATED FOOD ITEMS

CLASSES

- 1 Decorated Cakes
- 2 Decorated Cookies
- 3 Decorated Cupcakes
- 4 Cake Pops / Cake Balls (Qty 4)
- 5 Any other decorated item; Specify

DIVISION 116 – TABLE SETTINGS

- Each entrant will be given a 28” wide area of a banquet table (1/3 of the table) for a single place setting.
- A menu card must be included, and all settings, utensils, and glassware necessary for the menu must be used.
- Overall nutritional value of the menu will be ¼ of the judging score.
- A theme-oriented centerpiece, NO fresh flowers – must be included.
- *Special Set Up Date: Oct. 17, 2018 2pm-6pm*

CLASS

- 1 Fair Theme “*Family Fun, Food, & Farm Animals*”

ADULT PRESERVED FOODS

- **Entry Forms due Sep. 21, 2019**
- Enter online @ www.desertempirefair.com/fairfun/stillexhibits (you may also enter at the fair office).
- **Bring your entries to the Desert Valleys FCU Community Complex (Formerly Mesquite Hall) on Oct 8th or Oct 9th, 2019 from 11am-6pm.**
- Pick up your entries @ Sage Hall on Oct. 21st, 2019 from 11am-6pm.
- Entry Fees:
 - \$2.00 per entry
 - \$1.00 per entry for Seniors
 - Free for Special Needs
- All entries must have been home canned or prepared by the exhibitor. Canning or preparation must have taken place after the close of last year's fair. (Oct. 21, 2018).
- Canned good must be in jars specifically designed for canning.
- Each entry must be properly and completely sealed; no paraffin seals. Rings must be clean and loosened.
- All canned goods must be prepared in accordance with the guidelines in the Ball Blue Book of Canning, Freezing, and Dehydration, or as specified on www.homecanning.com
- Entries must be accurately labeled and include: Name of product, date of pack, method used (boiling water or steam pressure), and processing time.
- Each entry will be opened by the judge.
- No fabric toppers or decorations are allowed.
- Please note the headspace allowances:
Low-acid foods, vegetables and meats = 1 inch
Acidic foods, fruits, and tomatoes = ½ inch
Juices, jams, jellies, pickles, relishes = ¼ inch



HELPFUL DEFINITIONS:

JAMS:

Combinations of crushed or chopped fruit and sugar that are cooked to a smooth consistency, thick enough to spread well.

JELLIES:

Soft gelatinous goods made from cooked fruit syrup.

PRESERVES:

Similar to jams, except that whole fruits or large pieces of fruit are used and are cooked in such a way that the fruit retains its shape.

MARMALADES:

Soft jellies, usually containing thin, suspended pieces of citrus peel or fruit.

CONSERVES:

Like jam, except that usually two or more fruits are combined together with raisins and nuts.

BUTTERS:

Fruit purees that are combined with sugar and cooked down slowly to a thick, spreading consistency.

SYRUPS:

Sweetened, slightly thickened fruit juice.

DIVISION 117 – CANNED FRUIT

2 Standard Canning Jars

CLASS

- 1 Apples
- 2 Applesauce
- 3 Apricots
- 4 Cherries
- 5 Pears
- 6 Peaches
- 7 Plums
- 8 Fruit Juice; Specify
- 9 Any Other Fruit; Specify

DIVISION 119 – CANNED VEGETABLES

2 Standard Canning Jars

CLASS

- 1 Beans, Green, String
- 2 Beets
- 3 Carrots
- 4 Corn
- 5 Olives
- 6 Peppers
- 7 Tomatoes
- 8 Tomatoes, Stewed
- 9 Vegetable Juice; Specify
- 10 Any Other Vegetable; Specify

DIVISION 120 – PICKLES, RELISHES, SAUCES

2 Standard Canning Jars

CLASS

- 1 Barbeque Sauce
- 2 Spaghetti Sauce
- 3 Tomato Sauce
- 4 Chili Sauce
- 5 Chow-Chow
- 6 Sweet Pickles
- 7 Dill Pickles
- 8 Bread and Butter Pickles
- 9 Other Pickles; Specify
- 10 Any relish; Specify
- 11 Any Salsa; Specify
- 12 Any other; Specify

DIVISION 121 – JAMS

2 Standard Canning Jars

CLASS

- 1 Apricot
- 2 Apricot / Pineapple
- 3 Boysenberry
- 4 Cherry
- 5 Peach
- 6 Plum
- 7 Strawberry
- 8 Blackberry
- 9 Mixed berries; Specify
- 10 Any Other Jam; Specify

DIVISION 122 – JELLIES

2 Standard Canning Jars

CLASS

- 1 Blackberry
- 2 Boysenberry
- 3 Cherry
- 4 Strawberry
- 5 Crabapple
- 6 Currant
- 7 Elderberry
- 8 Grape
- 9 Pepper
- 10 Plum
- 11 Pomegranate
- 12 Mixed Fruit; Specify
- 13 Any Other; Specify

DIVISION 123 – PRESERVES, MARMALADES & BUTTERS

2 Standard Canning Jars

CLASS

- 1 Apple Butter
- 2 Peach Butter
- 3 Any Other Fruit Butter; Specify
- 4 Any Other Non-Fruit Butter (Peanut, Almond, etc.); Specify
- 5 Orange Marmalade
- 6 Any Other Marmalade; Specify
- 7 Berry Preserve; Specify
- 8 Other Fruit Preserve; Specify
- 9 Any Other; Specify

DIVISION 124 – MISC. PRESERVED FOODS

2 Standard Canning Jars, except as noted

CLASS

- 1 Any Syrup; Specify
- 2 Any Other Topping; Specify
- 3 Any Vinegar; Specify (1 bottle)
- 4 Any Canned Meat; Specify
- 5 Any Dehydrated Fruit; Specify (6 pcs)
- 6 Jerky (4 or 6 pieces)
- 7 Any Other Preserved Food; Specify
- 8 Fruit (1 fruit roll)

ADULT CLOTHING AND TEXTILES

- **Entry Forms due Sep. 21, 2019**
- Enter online @ www.desertempirefair.com/fairfun/stillexhibits (you may also enter at the fair office).
- **Bring your entries to the Desert Valleys FCU Community Complex (Formerly Mesquite Hall) on Oct 8th or Oct 9th, 2019 from 11am-6pm.**
- Pick up your entries @ Sage Hall on Oct 21st, 2019 from 11am-6pm.
- Entry Fees:
 - \$2.00 per entry
 - \$1.00 per entry for Seniors
 - Free for Special Needs
- All entries must have been completed since the close of last year's fair. (Oct. 22, 2017)
- The Fair reserves the right to refuse to accept or judge any article that shows evidence of being soiled or of excessive wear.
- All cross stitch, wall hangings, or pictures must be wired for hanging with pegboard hooks.
- No alligator clips, saw tooth hangers, or table-top frames are allowed.
- Please identify finished or 'top' side of knitted or crocheted work with a small safety pin on the front side of the entry.
- Exhibits must be adequately and correctly cleaned, pressed, and blocked if necessary.
- Indicate on the entry form if the entry is from a stamped pattern or illustration.



DIVISION 128 – APPLIQUE & PATCHWORK

All pictures & wall hangings must be wired for hanging on pegboard.

CLASS

- 1 Clothing, Any Item; Specify
- 2 Picture of Wall Hanging, Specify
- 3 Pillow
- 4 Any Other; Specify

DIVISION 129 – CROCHETED & LACEWORK ARTICLES

CLASS

- 1 Baby Booties, 1 pair
- 2 Baby Clothing
- 3 Bedspread or Tablecloth
- 4 Children's Clothing
- 5 Dimensional Crochet (non-clothing)
- 6 Doilies
- 7 Dress
- 8 Pillow
- 9 Shawl
- 10 Vest or Shell
- 11 Sweater
- 12 Lacework, Any item (non-tatting)
- 13 Tatting, Any Article; Specify
- 14 Any Other; Specify



DIVISION 130 – CROCHETED AFGHANS

CLASS

- 1 Granny Square
- 2 Ripple
- 3 Other Square
- 4 Strips or Mile-a-Minute
- 5 Shell
- 6 Stripes
- 7 Baby
- 8 Any Other; Specify



DIVISION 131 – NEEDLE ARTS

CLASS

- 1 Cross Stitch
- 2 Crewel Work
- 3 Needlepoint
- 4 Hand Embroidery
- 5 Machine Embroidery
- 6 Latch Hook
- 7 Any Other; Specify

DIVISION 132 – HAND KNITTING

CLASS

- 1** Booties, 1 pair
- 2** Baby Clothes
- 3** Children's Clothes / Adult Sweater
- 4** Socks
- 5** Scarf
- 6** Poncho or Shawl
- 7** Dress
- 8** Afghan
- 9** Any Other; Specify

DIVISION 136 – CLOTHING (SEWN)

CLASS

- 1** Baby's Christening Outfit
- 2** Baby Item, Any Other; Specify
- 3** Children's Blouse or Shirt
- 4** Children's Dress
- 5** Children's Pants or Shorts
- 6** Children's Outfit – 2 or more pieces
- 7** Children's Item, Any Other; Specify
- 8** Adult Blouse or Shirt
- 9** Adult Dress
- 10** Adult Pants or Shorts
- 11** Adult Outfit – 2 or more pieces
- 12** Adult Item, Any Other; Specify
- 13** Any Costume
- 14** Any Accessories

DIVISION 139 – MISCELLANEOUS SEWING & TEXTILES

CLASS

- 1** Machine Knitting; Specify
- 2** Hand Weaving; Specify
- 3** Hand Spinning; Specify
- 4** Household Items; Specify
- 5** Toys (Stuffed animals, fabric dolls, Doll clothes, etc.); Specify
- 6** Any other fabric item; Specify



DIVISION 140 – CHRISTMAS CORNER

Made from fabric or related material; NO QUILTS

CLASS

- 1** Tree Skirt
- 2** Stocking
- 3** Door Decoration
- 4** Christmas Animal or Doll
- 5** Ornament (Made from fabric)
- 6** Other Christmas Item, Sewn; Specify
- 7** Any Other; Specify

DIVISION 141 – SENIOR CITIZEN CLOTHING AND TEXTILES

For non-professionals 65 and over; No Quilts. All pictures and wall hangings must be wired for hanging on pegboard.

CLASS

- 1** Knitted Article; Specify (block if needed)
- 2** Crocheted Article; Specify (blocked)
- 3** Embroidered Article; Specify
- 4** Clothing Item; Specify
- 5** Toy or Stuffed Animal; Specify
- 6** Needlepoint Item
- 7** Christmas Item, Sewn; Specify
- 8** Any Other; Specify

DIVISION 142 – PHYSICALLY OR DEVELOPMENTALLY CHALLENGED

Danish Judging

CLASS

- 1** Knitted or Crocheted Item; Specify
- 2** Needlework; Specify
- 3** Clothing Item; Specify
- 4** Quilt or Quilted Item; Specify
- 5** Christmas Item; Specify
- 6** Any Other; Specify

DIVISION 143 – PROFESSIONAL CLOTHING AND TEXTILES

CLASS

- 1** Any Item; Specify

ADULT QUILTING

- **Entry Forms due Sep. 21, 2019**
- Enter online @ www.desertempirefair.com/fairfun/stillexhibits (you may also enter at the fair office).
- **Bring your entries to the Joshua Hall Boardroom on Sep. 25th-26th, 2019 from 12noon-5pm.**
- Pick up your entries at the Joshua Hall Boardroom on Oct. 21st, 2019 from 11am-6pm.
- Entry Fees:
 - \$2.00 per entry
 - \$1.00 per entry for Seniors
 - Free for Special Needs
- **State width and length of the quilt on entry form.**
- All entries must have been completed since the close of last year's fair. (Oct. 21, 2018)
- All quilts must consist of cloth and have 3 layers – top, batting, and backing.
- Must be hand or machine quilted.
- Entries must be identified with the maker's name and completion date. Please baste a piece of muslin or fabric over the maker's name. If more than one person was involved in making the quilt, list all persons on the entry form and identify who did the piecing and who quilted the entry.
- Soiled or stained quilts may be disqualified.
- Judges reserve the right to reclassify any entry or to move entries to create more equal, competitive groupings.
- Quilts and wall hangings must have a 4' sleeve securely attached to the top of the quilt for display purposes. NO EXCEPTIONS...
- State on the entry form if the entry is a First Quilt.



HELPFUL DEFINITIONS:

ART QUILT:

Is innovative, extends beyond traditional disciplines, and exhibits independence and originality.

BABY QUILT:

Uses fabric and designs suitable for a child; may be any size. The quilter may choose to enter a baby quilt in a regular hand or machine quilted class instead.

MINIATURE QUILT:

Outside edges total 72 inches or less. These quilts typically contain multiple small versions of bed-size quilt patterns. If the quilt has blocks that finish over 6 inches on a side, it should be entered as a small quilt.

SMALL QUILT:

(includes most wall hangings) Outside edges total up to 192 inches.

MEDIUM QUILT:

Outside edges total between 192 and 300 inches.

LARGE QUILT:

Outside edges total over 300 inches.

MIXED OR SPECIAL TECHNIQUES:

Quilts contain two or more of the following techniques – piecing, applique, embroidery, photo transfer, beading, fabric painting, or coloring with dyes, chalks, crayons, etc.

DIVISION 150 – PROFESSIONALLY QUILTED, PIECED BY AMATEUR

Piecing done by one person, an amateur, but professionally quilted by another – identify quilter.

DIVISION 151 – AMATEUR

All work done by a single person, an amateur with 3 or less years of quilting experience.

DIVISION 152 – ADVANCED AMATEUR

All work done by a single person, one who has become highly skilled through experience, workshops, etc.; would include previous Best of Show winners and repeated Best of Division winners. 3 or more years of quilting experience.

DIVISION 153 – PROFESSIONAL

All work done by a single person, a professional.

DIVISION 154 – GROUP QUILTS

Work done by more than one person – round robin, etc. Identify all quilters involved.

CLASSES:

ART QUILTS – *Hand or Machine Quilted*

- 1 Pieced or whole-cloth (hand or machine)
- 2 Applique (hand, machine or fusible)
- 3 Mixed or Special Techniques

BABY QUILTS – *Hand or Machine Quilted*

- 4 Pieced or whole-cloth (hand or machine)
- 5 Applique (hand, machine or fusible)
- 6 Mixed or Special Techniques

MINIATURES – *Hand or Machine Quilted*

- 7 Pieced or whole-cloth (hand or machine)
- 8 Applique (hand, machine or fusible)
- 9 Mixed or Special Techniques

HAND QUILTED

SMALL QUILTS – *State size*

- 10 Pieced - Hand
- 11 Pieced - Machine
- 12 Appliqued - Hand
- 13 Appliqued – Machine or Fusible
- 14 Mixed or Special Techniques

MEDIUM QUILTS – *State size*

- 15 Pieced - Hand
- 16 Pieced - Machine
- 17 Appliqued - Hand
- 18 Appliqued – Machine or Fusible
- 19 Mixed or Special Techniques

LARGE QUILTS – *State size*

- 20 Pieced - Hand
- 21 Pieced - Machine
- 22 Appliqued - Hand
- 23 Appliqued – Machine or Fusible
- 24 Mixed or Special Techniques



MACHINE QUILTED

SMALL QUILTS – *State size*

- 25 Pieced - Hand
- 26 Pieced - Machine, Home machine
- 27 Pieced – Machine, Long arm
- 28 Appliqued – Hand
- 29 Appliqued – Machine or Fusible
- 30 Mixed or Special Techniques

MEDIUM QUILTS – *State size*

- 31 Pieced - Hand
- 32 Pieced - Machine, Home machine
- 33 Pieced – Machine, Long arm
- 34 Appliqued – Hand
- 35 Appliqued – Machine or Fusible
- 36 Mixed or Special Techniques

LARGE QUILTS – *State size*

- 37 Pieced - Hand
- 38 Pieced - Machine, Home machine
- 39 Pieced – Machine, Long arm
- 40 Appliqued – Hand
- 41 Appliqued – Machine or Fusible
- 42 Mixed or Special Techniques

QUILTED ARTICLE – (hand or machine quilted)

- 43 Bags, Purses
- 44 Clothing, single item
- 45 Clothing, Ensemble (2 or more items; may include purse or bag)
- 46 Table Décor – placemats, table runners, Tablecloths, etc.
- 47 Home Décor – Wreaths, pillows, quillows, Calendars, etc.

SPECIAL CATEGORIES – *State size*

- 48 Yo-Yo, Biscuit, Ties Quilts
- 49 Whole Cloth
- 50 Hand Embroidered (Hand or Machine Quilted)
- 51 Machine Embroidered (Hand or Machine Quilted)
- 52 Quilt or Quilted Item by a senior citizen, 65 years or older.

ADULT CREATIVE WRITING

- **Entry Forms due Sep. 21, 2019**
- Enter online @ www.desertempirefair.com/fairfun/stillexhibits (you may also enter at the fair office).
- **Bring your entries to the Desert Valleys FCU Community Complex (Formerly Mesquite Hall) on Oct 8th or Oct 9th, 2019 from 11am-6pm.**
- Pick up your entries @ Sage Hall Community Complex on Oct. 21st, 2019 from 11am-6pm.
- Entry Fees:
 - \$2.00 per entry
 - \$1.00 per entry for Seniors
 - Free for Special Needs
- Include a separate title page with the name of the work and the author's name. Do not put the author's name where it can be seen by the judges.



DIVISION 168 – CREATIVE WRITING

CLASS

- 1 Poetry
- 2 Short Fiction – 2500 word limit
- 3 Short Non-Fiction – 2500 work limit
- 4 Other; Specify



ADULT FINE ARTS

ELIGIBLE FOR HOWARD LAIRE AWARD

- **Entry Forms due Sep. 21, 2019**
- Enter online @ www.desertempirefair.com/fairfun/stillexhibits (you may also enter at the fair office).
- **Bring your entries to the Desert Valleys FCU Community Complex (Formerly Mesquite Hall) on Oct 8th or Oct 9th, 2019 from 11am-6pm.**
- Pick up your entries @ Sage Hall on Oct. 21st 2019 from 11am-6pm.
- Entry Fees:
 - \$2.00 per entry
 - \$1.00 per entry for Seniors
 - Free for Special Needs
- Indicate dimensions on the entry form.
- All entries must have been completed since the close of last year's fair. (Oct. 21, 2018)
- All hanging entries must be wired with strong picture wire to hang from pegboard hooks on pegboard. **REQUIRED.**
- Frames must be sturdy; inadequate frames will disqualify the artwork entry.
- All entries should be labeled on the back with the artist's name, address, title of picture, date of painting, and medium used.
- If the artist's name is on the front, please cover it.
- All artwork must be original.
- Fair management reserves the right to refuse any entry not suitable for the family nature of the fair.
- No instructor may draw or paint on any student's exhibit being judged.

DEFINITIONS:

AMATEUR: Beginning artist who are new to the field and engage in the activity as a pastime rather than a profession.

ADVANCED AMATEUR: Those who have advanced to a level beyond beginner and for whom the activity is a pastime.

PROFESSIONAL: Those who engage in the activity as a livelihood rather than a hobby.

DIVISION 169 – AMATEUR ART
DIVISION 170 – ADVANCED AMATEUR ART
DIVISION 171 – PROFESSIONAL ART

CLASS

- 1 Acrylic - Portrait
- 2 Acrylic - People
- 3 Acrylic - Scenic
- 4 Acrylic – Still Life
- 5 Acrylic – Animal
- 6 Acrylic – Seascape
- 7 Acrylic – Any Other; Specify
- 8 Oil - Portrait
- 9 Oil - People
- 10 Oil - Scenic
- 11 Oil – Still Life
- 12 Oil - Animal
- 13 Oil - Seascape
- 14 Oil – Any Other; Specify
- 15 Watercolor - Portrait
- 16 Watercolor - People
- 17 Watercolor - Scenic
- 18 Watercolor – Still Life
- 19 Watercolor - Animal
- 20 Watercolor - Seascape
- 21 Watercolor – Any Other; Specify
- 22 Mixed Media
- 23 Pastel, Color Crayon
- 24 Collage
- 25 Pencil
- 26 Computer Generated Art
- 27 Pen and Ink
- 28 Charcoal
- 29 Any Other; Specify



DIVISION 172 – SCULPTURE & CARVING

CLASS

- 1 Clay
- 2 Metal
- 3 Wood
- 4 Bas-Relief
- 5 Any Other; Specify

ADULT ARTS & CRAFTS
 Eligible for the Howard Laire AWARD

- **Entry Forms due Sep. 21, 2019**
- Enter online @ www.desertempirefair.com/fairfun/stillexhibits (you may also enter at the fair office).
- **Bring your entries to the Desert Valleys FCU Community Complex (Formerly Mesquite Hall) on Oct. 8th or Oct 9th, 2019 from 11am-6pm.**
- Pick up your entries @ Sage Hall on Oct. 21st, 2019 from 11am-6pm.
- Entry Fees:
 - \$2.00 per entry
 - \$1.00 per entry for Seniors
 - Free for Special Needs
- All entries must have been completed since the close of last year's fair. (Oct. 21, 2018)
- Judging will be based on: Workmanship, Suitability of Article to Purpose; Beauty and Originality of Design, and Harmony of Color, Finish and Materials.
- Original designs will outscore copies, published patterns, or tracings in "Originality" aspect of judging.
- Any item weighing more than 50 pounds should be noted on the entry form, as well as sizes for very large entries (canoes, desks, chuck wagons, etc.).
- Please note any special display needs – electricity, locked case, etc.
- Entrant may supply own case if desired.
- Please note on entry form is exhibit was made from a kit.

DIVISION 173 – AMATEUR CERAMICS (Kiln Fired)

DIVISION 174 – PROFESSIONAL CERAMICS (Kiln Fired)

CLASS

- 1 Animal, Any Finish
- 2 Figurine, Any Finish
- 3 Underglazed
- 4 Glazed
- 5 Stain, Any
- 6 Stain and Glazed Combination
- 7 Any Item done in oils
- 8 *Any Other; Specify*

DIVISION 175 – AMATEUR POTTERY AND CLAY

DIVISION 176 – PROFESSIONAL POTTERY AND CLAY

CLASS

- 1 Hand Built
- 2 Wheel Thrown
- 3 Combination using Coil or Slab and Wheel Thrown
- 4 Raku
- 5 Extra Difficult – Pieces 10” or more, or Multi pieces items, sets.
- 6 Any Other; Specify

DIVISION 177 – DOLLS

CLASS

- 1 Porcelain
- 2 Fabric
- 3 Any Other; Specify

DIVISION 179 – YESTERDAY’S TRASH

Danish Judging

Each entry must contain at least 80% recycled materials. Include a written explanation of what the materials were and how they are being used in a new way (ex. A teapot is now a flower vase, metal coat hangers have been woven into a chain mail, old paper is now classy stationary).

CLASS

- 1 Any Item; Specify

DIVISION 180 – WEARABLE ART

CLASS

- 1 Painting on Fabric - Clothing
- 2 Painting on Fabric – Non-Clothing Item
- 3 Beaded Clothing
- 4 Ribbon Art - Clothing
- 5 Ribbon Art – Non-Clothing Item
- 6 Mixed Techniques; Specify
- 7 Any Other; Specify

DIVISION 182 – STAINED GLASS

CLASS

- 1 Stained Glass, Copper Foil
- 2 Stained Glass, Lead
- 3 Stained Glass, 3-dimensional
- 4 Any Other; Specify



DIVISION 183 – JEWELRY

CLASS

- 1 Beaded Single Item – Necklace, Bracelet, or Earrings, etc.
- 2 Beaded Set – Necklace and Earrings, etc.
- 3 Ceramic Single Item – Necklace, Bracelet, or Earrings, etc.
- 4 Ceramic Set – Necklace and Earrings, etc.
- 5 Clay Single Item – Necklace, Bracelet, or Earrings, etc.
- 6 Clay Set – Necklace and Earrings, etc.
- 7 Metal Single Item – Necklace, Bracelet, or Earrings, etc.
- 8 Metal Set – Necklace and Earrings, etc.
- 9 Any Other; Specify

DIVISION 184 – LEATHERWORK

CLASS

- 1 Bag or Purse
- 2 Belt
- 3 Billfold or Walled
- 4 Picture
- 5 Any Other; Specify

DIVISION 185 – TOLE AND DECORATIVE PAINTING

CLASS

- 1 Decorative Painting on Metal
- 2 Decorative Painting on Wood
- 3 One-Stroke Painting
- 4 Mixed Media
- 5 Any Other; Specify

DIVISION 186 – PAPER ART

CLASS

- 1 Calligraphy
- 2 Embossing
- 3 Stationary Art
- 4 Paper Mache
- 5 Paper Sculpture

- 6 Quilling
- 7 Stamping
- 8 Any Other; Specify

DIVISION 187 – SCRAPBOOKING

DIVISION 187B – DIGITAL SCRAPBOOKING

Single page or two-page spread, not back-to-back. No books. Page Protectors must be on pages. All four edges should be secured to help keep pages intact during entry processing, judging, and display. Judging will consider Journaling, Arrangement, Creativity, and Craftsmanship. All items part of the judging must be visible without opening the protective sleeve.

CLASS

- 1 Kids
- 2 Weddings
- 3 Sports / Hobbies
- 4 Travel / Vacation
- 5 Animals
- 6 Recipe Page
- 7 Use of Fair Theme:

“Family Fun, Food & Farm Animals”

DIVISION 188 – WOODWORKING

CLASS

- 1 Models – Original Design
- 2 Small Wooden Item
- 3 Large Wooden Item
- 4 Any Wood Item from a Kit: Specify
- 5 Furniture Refinishing
- 6 Any Other; Specify

DIVISION 189 – MISCELLANEOUS CRAFTS

CLASS

- 1 Plastercraft
- 2 Plastic Canvas
- 3 Taxidermy
- 4 Dough Art
- 5 Decorated Eggs
- 6 Etched Glass
- 7 Native American Crafts
- 8 Metal Working
- 9 Miniatures
- 10 Models – Original Design (No Wood)
- 11 Models – LEGOS – **Must enter special Lego Contest on Sat. Oct.19th, 2019.**
- 12 Models – From a Kit (No Wood)

- 13 Decorated Gourd
- 14 Scarecrow by an Individual
- 15 Scarecrow by a Group
- 16 Photo or Other Album Cover
- 17 Any Other; Specify

DIVISION 191 – PHYSICALLY OR DEVELOPMENTALLY CHALLENGED

Danish Judging / Non-Competitive

CLASS

- 1 Any Craft Item; Specify

DIVISION 192 – PROFESSIONAL CRAFTS

CLASS

- 1 Any Craft Item; Specify

DIVISION 193 – SENIOR CITIZEN CRAFTS

Must be an amateur, 65+ years old.

CLASS

- 1 Household Item
- 2 Holiday Decoration
- 3 Any Other Craft Item; Specify

DIVISION 194 – COLLECTIONS

- *Collections must be accompanied by a written statement giving a brief history of why and when the collection was started, why the theme of the collection is important to the collector, and mentioning any unique items in the collection. The write-up is a major part of the judging. **Provide a photograph of the collection, if possible, with the entry form.***
- *No more than half of the items may have been shown in a previous Desert Empire Fair. Significant additions must have been made since that time.*
- *Special set up time: Oct. 15th & 16^h, 2019 2pm-6pm*
- *Collections must be arranged by the exhibitor.*
- *The exhibitor may provide a display case if desired.*

CLASS

- 1 Small Items – Specify Type and Number
- 2 Large Items – Specify Type and Number

ADULT PHOTOGRAPHY

Sponsored by: RCAVB Film Commission

Eligible for the Howard Laire Appreciation of the Arts Award



- **Entry Forms due Sep. 21, 2019**
- Enter online @ www.desertempirefair.com/fairfun/stillexhibits (you may also enter at the fair office).
- **Bring your entries to the Desert Valleys FCU Community Complex (Formerly Mesquite Hall) on Oct. 8th or Oct 9th 2019 from 11am-6pm.**
- Pick up your entries @ Sage Hall on Oct. 21st, 2019 from 11am-6pm.
- Entry Fees:
 - \$2.00 per entry
 - \$1.00 per entry for Seniors
 - Free for Special Needs
- Photographs will be judged on Overall Impact, Composition, Technical Quality, and Presentation.
- Entries must be the work of the exhibitor, with the exception of processing, matting or mounting, and have been taken within the past 3 years.
- Each entry must have the photographer's name, address, phone number, and title of the work on the back of the exhibit.
- Names, titles and dates may not appear on the front of the photograph.
- Use an arrow to indicate the top of the photo as it is to be displayed.
- All prints must be mounted on rigid material, or matted if desired.
- Frames and glass are now allowed.
- Caution: Double stick tape is not sufficient to secure photos to mounting boards. Entries separating or removing from the boards after receiving will be removed from the show or disqualified.
- Attach 1" strips of Velcro to each corner of the back of the photograph. Use ONLY the prickly side of the Velcro, not the soft side.
- Except for Division 199 (Mini Photographs), entries must have the smaller dimension of at least 8" and be no larger than 16" x 20" overall, including the mounting.

- An image may be entered in one Division and Class only. Multiple versions will be disqualified.
- Entries in the "Any Other" class will be allowed only if there is no suitable class for that photograph.
- Misplaced entries may be moved to the appropriate class if it has not already been judged, or may be disqualified.
- Clear plastic sleeves will be allowed in order to protect the entries during processing. Do not seal the sleeve, so that it can be removed during judging.
- Management reserves the right to refuse any entry not suitable to the family nature of the fair.



DIVISION 195 – BEGINNING PHOTOGRAPHY

Anyone just starting to take photos with no editing.

DIVISION 196 – INTERMEDIATE PHOTOGRAPHY

Anyone who has been taking photos and starting to do their own editing.

DIVISION 197 – ADVANCED PHOTOGRAPHY

Any experienced photographer who can enhance photos.

DIVISION 198 – PROFESSIONAL PHOTOGRAPHY

Anyone who photographs as their main source of income.

DIVISION 199 – MINI PHOTOGRAPHS

4" x 6" and 5" x 7" photos

CLASS

- 1** Sunrise / Sunset - Color
- 2** Landscape (land as the predominate theme) – Color
- 3** Waterscape (rivers, lakes, or ocean as the Predominate theme) - Color
- 4a** Nightscape (lighted buildings, the moon, etc.) - Color
- 4b** Weather, Lightening – Color
- 5a** Flowers - Color
- 5b** Desert Wildflowers - Color
- 6** Trees and Leaves/Foliage - Color
- 7** Still Life - Color
- 8a** Domestic Animals - Color
- 8b** Wild Animals - Color
- 8c** Insects – Color
- 8d** Reptiles – Color
- 9** One person - Color
- 10** More than one person - Color
- 11** Macro / Super Close-Up - Color
- 12** Buildings / Architecture - Color
- 13** Action - Color
- 14** Transportation - Color
- 15** Non-Objective / Abstract – Color
- 16** Journalistic (3 or more photos that tell a chronological story) - Color
- 17** Collage / Montage - Color
- 18** Any Other; Specify - Color

- 19** Sunrise / Sunset – Black & White
- 20** Landscape (land as the predominate theme) – Black & White
- 21** Waterscape (rivers, lakes, or ocean as the predominate theme) – Black & White
- 22a** Nightscape (the moon, etc.)–Black & White
- 22b** Weather, Lightening – Black & White
- 23** Flowers – Black & White
- 24** Desert Wildflowers – Black & White
- 25** Trees & Leaves/Foliage – Black & White
- 26** Still Life – Black & White
- 27** Domestic Animals – Black & White
- 28a** Wild Animals – Black & White
- 28b** Insects – Black & White
- 28c** Reptiles – Black & White
- 29** One Person – Black & White
- 30** More than one person – Black & White
- 31** Macro/Super Close-Up – Black & White
- 32** Buildings & Architecture – Black & White
- 33** Action – Black & White
- 34** Transportation – Black & White
- 35** Nonobjective / Abstract – Black & White
- 36** Journalistic (3 or more photos that tell a chronological story) – Black & White
- 37** Collage / Montage – Black & White
- 38** Any Other; Specify – Black & White

*****Looking for boards of mattes you can find them @ www.goldenstart.com**



JUNIOR CLOTHING AND TEXTILES

SPONSORED BY FRIENDS OF THE FAIR

Danish Judging



- **Entry Forms due Sep. 21, 2019**
- Enter online @ www.desertempirefair.com/fairfun/stillexhibits (you may also enter at the fair office).
- **Bring all entries (except quilts) to the Desert Valleys FCU Community Complex (Formerly Mesquite Hall) on Oct. 8th or Oct 9th 2019 from 11am-6pm.**
- **Bring quilt entries to the Joshua Hall Boardroom on Sep.25 &26; 12noon-5pm.**
- Pick up your entries at Sage Hall on Oct.21st, 2019 from 11am-6pm.
- Entry Fees:
 - Free for Juniors
 - Free for Special Needs



DIVISION 252 – CLOTHING AND TEXTILES

Quilts and wall hangings must have a 4" sleeve attached at the top for display purposes. Backs of latch hook, cross stitch, etc. must be finished off or framed and wired for hanging from pegboard.

CLASS

- 1 Stuffed Animal
- 2 Latch Hook
- 3 Needlework – Any; Specify
- 4 Weaving
- 5 Quilt
- 6 Knitting
- 7 Crocheted Work
- 8 Shirt or Blouse
- 9 Skirt
- 10 Dress
- 11 Pants or Shorts
- 12 Outfit – 2 or more pieces
- 13 Fabric Doll
- 14 Doll Clothes
- 15 Apron
- 16 Accessories – Purse, tote bag, hat, etc.
- 17 Any Other; Specify

DIVISION 253 – SPECIAL NEEDS YOUTH - CLOTHING AND TEXTILES

CLASS

- 1 Clothing Item; Specify
- 2 Knitted or Crocheted Item; Specify
- 3 Any Needlework (Embroidery, Cross Stitch, etc.); Specify
- 4 Any Other; Specify

JUNIOR FOODS

Sponsored by Friends of the Fair

- **Entry Forms due Sep. 21, 2019**
- Enter online @ www.desertempirefair.com/fairfun/stillexhibits (you may also enter at the fair office).
- **Bring all entries to Sage Hall on Oct 16th, 2019 from 2pm-7pm.**
- Pick up your entries at Sage Hall on Oct. 21st, 2019 from 11am-6pm.
- Entry Fees:
 - Free for Juniors
 - Free for Special Needs
- Include recipes, on an 8.5" x 11" paper, with All entries.
- Enter only the amount of food indicated.
- Pies must be entered in clear, uncolored glass pie plates.
- All other entries are to be in disposable pans or containers or on white paper plates. NO exceptions.
- All entries must have been made from scratch, except Division 259.
- Pie plates left after 7 days become the property of the Fair and will be disposed of appropriately.
- All food will be disposed of at the end of the fair.

DIVISION 257 – COOKIES

6 cookies

CLASS

- 1 Chocolate Chip
- 2 Drop
- 3 Cut-Out
- 4 Hand-Shaped
- 5 Gluten-Free
- 6 Sugar-Free
- 7 Any Other; Specify



DIVISION 258 – ALL OTHER FOODS

CLASS

- 1 Yeast Bread - ½ loaf + 1 wrapped slice
- 2 Quick Bread (Banana, zucchini, etc.) – ½ loaf + 1 wrapped slice
- 3 Bread, Any Other – ½ loaf + 1 wrapped slice or 4 rolls
- 4 Muffins – 5 items
- 5 Brownies – 5 items
- 6 Cake, Any – ½ cake + 1 wrapped slice
- 7 Candy, Any – 6 pieces
- 8 Pie, Any – Full Pie
- 9 Gluten-Free, Any Item; Specify
- 10 Sugar-Free; Any item; Specify
- 11 Any Other; Specify



DIVISION 259 – STARTING WITH A MIX

Recipes must be included with entries, indicating changes made from the original mix instructions. Quantities to be entered are the same as in Divisions 257 and 258.

CLASS

- 1 Cake, Any – ½ cake + 1 wrapped slice.
- 2 Brownies – 5 brownies
- 3 Cookies – 6 cookies
- 4 Muffins – 5 muffins
- 5 Any Other; Specify

DIVISION 260 – DECORATED FOOD ITEMS

Cakes may be made with a Styrofoam base or have a real cake base.

CLASS

- 1 Cakes – 1 cake
- 2 Cookies – 6 cookies
- 3 Cupcakes – 4 cupcakes
- 4 Cake Pops / Balls – 4 items
- 5 Any Other; Specify



DIVISION 261 – TABLE SETTINGS

- Each entrant will be given a 28” wide area of a banquet table (1/3 of the table) for a single place setting.
- A menu card must be included, and all settings, utensils, and glassware necessary for the menu must be used.
- Overall nutritional value of the menu will be ¼ of the judging score.
- A theme-oriented centerpiece, NO fresh flowers – must be included.
- ***Special Set Up Date: Oct. 17, 2018 2pm-6pm***

CLASS

- 1 Fair Theme “***Family Fun, Food, & Farm Animals***”



JUNIOR PRESERVED FOODS

- **Entry Forms due Sep. 21, 2019**
- Enter online @ www.desertempirefair.com/fairfun/stillexhibits (you may also enter at the fair office).
- **Bring all entries to the Desert Valleys FCU Community Complex (Formerly Mesquite Hall) on Oct 8th or Oct 9th 2019 from 11am-6pm.**
- Pick up your entries at Sage Hall on Oct. 21st 2019 from 11am-6pm.
- Entry Fees:
 - Free for Juniors
 - Free for Special Needs
- Canned goods must be in jars specifically designed for canning.
- Each entry must be properly and completely sealed; no paraffin seals. Rings must be clean and loosened.
- All canned goods must be prepared in accordance with the guidelines in the Ball Blue Book of Canning, Freezing, and Dehydration, or as specified on www.homecanning.com
- Entries must be accurately labeled and include: Name of product, date of pack, method used (boiling water or steam pressure), and processing time.
- Each entry will be opened by the judge.
- No fabric toppers or decorations allowed.
- Please note the headspace allowances:
Low-acid foods, vegetables and meats = 1 inch
Acidic foods, fruits, and tomatoes = ½ inch
Juices, jams, jellies, pickles, relishes = ¼ inch

DIVISION 264 – PRESERVED FOODS

2 Standard canning jars, any size

CLASS

- 1 Canned Fruit; Specify
- 2 Canned Vegetable; Specify
- 3 Jam; Specify
- 4 Jelly; Specify
- 5 Preserves, Marmalade, Butter; Specify
- 6 Pickles, Relish, Sauce; Specify
- 7 Dehydrated Foods; Specify - (1 fruit roll or 6 fruit pieces; 4 pieces of jerky)
- 8 Any Other; Specify



JUNIOR ARTS AND CRAFTS

- **Entry Forms due Sep. 21, 2019**
- Enter online @ www.desertempirefair.com/fairfun/stillexhibits (you may also enter at the fair office).
- **Bring all entries to the Desert Valleys FCU Community Complex (Formerly Mesquite Hall) on Oct 8th or Oct 9th, 2019 from 11am-6pm.**
- Pick up your entries at Sage Hall on Oct. 21st, 2019 from 11am-6pm.
- Entry Fees:
 - Free for Juniors
 - Free for Special Needs

DIVISION 265 – HOLIDAY TIME CRAFTS

CLASS

- 1 Springtime (Valentine's Day, Easter, etc.)
- 2 Summertime (4th of July, etc.)
- 3 Autumn (Halloween, Thanksgiving, etc.)
- 4 Winter (Christmas, New Year's, etc.)
- 5 Spans more than one season; Specify

DIVISION 266 – YESTERDAY'S TRASH

Entry must contain at least 80% recycled materials. Include a written explanation of what the materials were and how they are being used in a new way (ex. A plastic bottle is now a flower vase, a pile of scrap paper and white glue is now a notepad, etc.)

CLASS

- 1 Any Item; Specify

DIVISION 268 – TOLE AND DECORATIVE PAINTING

May be done on wood, metal, or any other surface.

CLASS

- 1 Decoration
- 2 Household Item
- 3 Birdhouse
- 4 Wearable Art
- 5 Painted Rock
- 6 Any Other; Specify



DIVISION 269 – CERAMICS, SCULPTURES, ETC.

CLASS

- 1 Ceramics
- 2 Plastercraft or Hydrocal
- 3 Clay
- 4 Polymer Clay – Sculpty, Fimo, etc.
- 5 Porcelain Doll
- 6 Any Other; Specify



DIVISION 270 – PAPER ART

CLASS

- 1 Calligraphy
- 2 Paper Sculpture
- 3 Scrapbooking



Scrapbooking Special Rules: Single page or two-page spread, not back to back. No books. Page protectors must be on pages. All four edges should be secured to help keep pages intact during entry processing, judging and display. Judging will consider journaling, arrangement, creativity, and craftsmanship. All items part of the judging must be visible without opening the protective sleeve.

- 4 Masks
- 5 Any Other, Specify

DIVISION 271 – JEWELRY

CLASS

- 1 Beadwork - Earring
- 2 Beadwork – Any other jewelry
- 3 Clay
- 4 Ceramic
- 5 Set of any 2 or more pieces, Any; Specify
- 6 Any Other; Specify

DIVISION 272 – CANDLES

CLASS

- 1 Handmade
- 2 Decorated Purchased Candle
- 3 Any Other; Specify

DIVISION 273 – MODELS

CLASS

- 1 Car – Original design



- 2 Car – From a kit
- 3 Airplane – Original design
- 4 Airplane – From a kit
- 5 Legos – All Legos and Lego-type toys (K-Nex, etc.) must be entered in the Special Contest on Saturday. See Lego Rules in the Special Contests section of this guidebook.
- 6 Any Other Model– Original design; Specify
- 7 Any Other Model – From a kit; Specify

DIVISION 274 – MISCELLANEOUS CRAFTS

CLASS

- 1 Plastic Canvas
- 2 Album – Photo or Other; Specify
- 3 Wood, other than model – Original design
- 4 Wood, other than model – From a kit
- 5 Stained Glass (State Dimensions)
- 6 Gift Wrap
- 7 Metalwork
- 8 Leatherwork
- 9 Any Other Craft; Specify

DIVISION 275 – SPECIAL NEEDS YOUTH - CRAFTS

CLASS

- 1 Christmas Decoration
- 2 Ceramics, Dough, or Clay
- 3 Tole Painting
- 4 Paper Art
- 5 Candles
- 6 Any Other; Specify



DIVISION 194 – COLLECTIONS

- *Collections must be accompanied by a written statement giving a brief history of why and when the collection was started, why the theme of the collection is important to the collector, and mentioning any unique items in the collection. The write-up is a major part of the judging. Provide a photograph of the collection, if possible, with the entry form.*
- *No more than half of the items may have been shown in a previous Desert Empire Fair. Significant additions must have been made since that time.*
- **Special set up time: Oct. 17th, 2018; 2pm-6pm**
- *Collections must be arranged by the exhibitor*
- *The exhibitor may provide a display case if desired.*

CLASS

- 1 Small Items – Specify Type and Number

DIVISION 277 – SCARECROWS

CLASS

- 1 Made by and Individual
- 2 Made by a Group



JUNIOR SCHOOL PROJECTS

- **Entry Forms due Sep. 21, 2019**
- Enter online @ www.desertempirefair.com/fairfun/stillexhibits (you may also enter at the fair office).
- **Bring all entries to the Desert Valleys FCU Community Complex (Formerly Mesquite Hall) on Oct 8th or Oct 9th, 2019 from 11am-6pm.**
- Pick up your entries at Sage Hall on Oct. 21st, 2019 from 11am-6pm.
- Entry Fees:
 - Free for Juniors
 - Free for Special Needs

DIVISION 278 – SCHOOL PROJECTS

Items entered must have been made as a school project. If an entry was made by more than one person, ALL names must be included with the entry form.

CLASS

- 1 History and Social Sciences
- 2 Science
- 3 Literature
- 4 Art
- 5 Group Project, Specify
- 6 Any Other; Specify: STEM PROJECTS



JUNIOR FINE ARTS

Sponsored by Friends of the Fair



- **Entry Forms due Sep. 21, 2019**
- Enter online @ www.desertempirefair.com/fairfun/stillexhibits (you may also enter at the fair office).
- **Bring all entries to the Desert Valleys FCU Community Complex (Formerly Mesquite Hall) on Oct 8th or Oct 9th, 2019 from 11am-6pm.**
- Pick up your entries on Oct. 21st, 2019 from 11am-6pm.
- Entry Fees:
 - Free for Juniors
 - Free for Special Needs
- **All paintings (not drawings) are to follow the Adult Fine Arts Rules. Note hanging requirements.**
- Anything framed must be wired for hanging with pegboard hooks on pegboard; no table-top frames.
- Art work is to be original, not copies or tracings of other work.
- It is recommended that drawings be on heavy paper or backed with heavier paper to protect the entries during processing and showing.
- Except for paintings, frames are not allowed.

DIVISION 282 – PAINTING AND DRAWING (AGES 14-19)

DIVISION 283 – PAINTING AND DRAWING (AGES 10-13)

DIVISION 284 – PAINTING AND DRAWING (AGES 6-9)

DIVISION 285 – PAINTING AND DRAWING (AGE 5 and Under)

DIVISION 286 – PAINTING AND DRAWING (Special Needs Youth)

CLASS

- 1 Pen
- 2 Pencil – Colored
- 3 Pencil - Other
- 4 Pastels
- 5 Oil
- 6 Watercolor
- 7 Acrylic
- 8 Markers
- 9 Color Crayons
- 10 Mixed Media
- 11 Computer-generated Art (No Clip-Art)
- 12 Collages - Any
- 13 Any Other Medium; Specify

JUNIOR CREATIVE WRITING

- **Entry Forms due Sep. 21, 2019**
- Enter online @ www.desertempirefair.com/fairfun/stillexhibits (you may also enter at the fair office).
- **Bring all entries to Sage Hall on Oct 8th or Oct 9th, 2019 from 11am-6pm.**
- Pick up your entries at Sage Hall on Oct. 21st, 2019 from 11am-6pm.
- Entry Fees:
 - Free for Juniors
 - Free for Special Needs
- Include a separate title page with the name of the work and author's name.
- Do not put the author's name where it can be seen by the judge.
- Work should not have been created as a class assignment.
- Illustrations will not be considered in the judging.

DIVISION 287 – CREATIVE WRITING

CLASS

- 1 Poetry
- 2 Short Fiction – 2500 Word limit
- 3 Short Non-Fiction – 2500 Word limit
- 4 Any Other; Specify



JUNIOR PHOTOGRAPHY

- **Entry Forms due Sep. 21, 2019**
- Enter online @ www.desertempirefair.com/fairfun/stillexhibits (you may also enter at the fair office).
- **Bring all entries to the Desert Valleys FCU Community Complex (Formerly Mesquite Hall) on Oct 8th or Oct 9th, 2019 from 11am-6pm.**
- Pick up your entries at Sage Hall on Oct. 21st, 2019 from 11am-6pm.
- Entry Fees:
 - Free for Juniors
 - Free for Special Needs
- **All junior photography entries must follow the rules listed in Adult Photography.**

DIVISION 288 – PHOTOGRAPHY

DIVISION 289 – MINI PHOTOS (4' X 6" and 5" x 7")

CLASS

- 1 Domestic Animals - Color
- 1a Wild Animals - Color
- 1b Insects - Color
- 1c Reptiles - Color
- 2 Landscape - Color
- 3 Waterscape (Rivers, lakes, ocean as main subject) - Color
- 4 Flowers - Color
- 5 Trees - Color
- 6 People - Color
- 7 Vehicles (cars, boats, etc.) - Color
- 8 Buildings / Architecture - Color
- 9 Any Other, Specify - Color
- 10 Domestic Animals – Black & White
- 11 Wild Animals – Black & White
- 11a Insects – Black & White
- 11b Reptiles – Black & White
- 12 Landscape – Black & White
- 13 Waterscape (Rivers, lakes, ocean as main subject) – Black & White
- 14 Flowers – Black & White
- 15 Trees – Black & White
- 16 People – Black & White
- 17 Vehicles (Cars, boats, etc.)– Black & White
- 18 Buildings / Architecture – Black & White
- 19 Any Other; Specify



4-H DEPARTMENT

Danish Judging

- The exhibitor's age must be on the entry form.
- All entries in this department will be judged by Danish judging, where each entry is judged on its own merits against recognized standards and awarded 1st, 2nd, 3rd, or Honorable Mention placings as earned.
- All entries in these Divisions must have been made, collected, or prepared by the exhibitor.
- 4-H exhibitors may not enter the same divisions in the Junior Department as they are entering in the 4-H department.
- 4-H exhibitors do not have to be in a specific project to enter.
- **4-H exhibitors must be enrolled in a 4-H club and have the entry form signed by the 4-H Program Representative or the 4-H Community leader.**

DIVISION 300 – YOUTH ORGANIZATION BOOTH

- *Incorporate the fair theme in showcasing your organization.*
- *Set up times will be between Oct. 15th and Oct. 16th.*
- *Your display must be in place by 5pm on Oct. 16th to eligible for the Best Use of Fair Theme by a Youth Organization: ribbon.*
- *Please call (760) 375-8000 to arrange a set up time.*
- *Youth participation in preparation and setup weighs heavily in the judging.*

FAIR THEME: “Family Fun, Food,& Farm Animals”

CLASS

- 1 Any Youth Club, Class or Organization



4-H - CLOTHING AND TEXTILES

Danish Judging

- **Entry Forms due Sep. 21, 2019**
- Enter online @ www.desertempirefair.com/fairfun/stillexhibits (you may also enter at the fair office).
- **Bring all entries (except quilts) to the Desert Valleys FCU Community Complex (Formerly Mesquite Hall) on Oct 8th or Oct 9th, 2019 from 11am-6pm.**
- **Bring quilt entries to the Joshua Hall Boardroom on Sep 25th & 26th: 12noon-5pm.**
- Pick up your entries on Oct. 21st, 2019 from 11am-6pm.
- Entry Fees:
 - Free for 4-H members
- *All entries in these divisions must have been made by the 4-H exhibitor in accordance with the 4-H Home Economics program.*



DIVISION 302 – CLOTHING

CLASS

- 1 Apron
- 2 Dress
- 3 Pants / Shorts
- 4 Top / Blouse
- 5 Skirt
- 6 Jacket
- 7 Suit
- 8 Coordinated Outfit – 2 or more pieces
- 9 Accessories – Purse, tote bag, hat, etc.
- 10 Any Other; Specify



DIVISION 303 – NON-CLOTHING

Quilts and wall hangings must have a 4-inch sleeve attached for display purposes.

CLASS

- 1 Stuffed Toy
- 2 Pillow
- 3 Quilt
- 4 Quilted Wall Hanging
- 5 Other Quilted Item
- 6 Embroidered Item
- 7 Knitted Item
- 8 Crocheted Item
- 9 Hand-Spun Yarn Item
- 10 Hand-Woven Item; Specify type of loom and fiber
- 11 Any Other Non-Clothing Item; Specify

4-H - FOOD & NUTRITION

- **Entry Forms due Sep. 21, 2019**
- Enter online @ www.desertempirefair.com/fairfun/stillexhibits (you may also enter at the fair office).
- **Bring all entries to Sage Hall on Oct. 16th, 2019 from 2pm-7pm.**
- Pick up your entries at Sage Hall on Oct. 21st, 2019 from 11am-6pm.
- Entry Fees:
 - Free for 4-H Members
- Include recipes, on an 8.5" x 11" paper, with all entries.
- Enter only the amount of food indicated.
- Pies must be entered in clear, uncolored glass pie plates.
- All other entries are to be in disposable pans or containers or on white paper plates. NO exceptions.
- All entries must have been made from scratch, NO MIXES.
- Pie plates left after 7 days become the property of the Fair and will be disposed of appropriately.
- All food will be disposed of at the end of the fair.



DIVISION 305 – FOODS

- 1 Yeast Bread – ½ loaf + 1 wrapped slice
- 2 Quick Bread – ½ loaf + 1 wrapped slice
- 3 Other Breads – ½ loaf + 1 wrapped slice
- 4 Muffins – 5 Items
- 5 Biscuits – 5 Items
- 6 Cake; Specify ½ cake + 1 wrapped slice
- 7 Cookies (Drop) – 6 Items
- 8 Cookies (Bar) – 6 Items
- 9 Cookies (Other); Specify – 6 Items
- 10 Candy; Specify – 6 Items
- 11 Pie; Specify – 1 Pie
- 12 Any Other; Specify

DIVISION 307 – DECORATED FOOD ITEMS

Cakes may be made with a Styrofoam base or have a real cake base.

CLASS

- 1 Cakes – 1 cake
- 2 Cookies – 6 cookies
- 3 Cupcakes – 4 cupcakes
- 4 Cake Pops / Balls – 4 items



4-H - PRESERVED FOODS

- **Entry Forms due Sep. 21, 2018**
- Enter online @ www.desertempirefair.com/fairfun/stillexhibits (you may also enter at the fair office).
- **Bring all entries to Desert Valleys FCU Community Complex (formerly Mesquite Hall) on Oct. 8th or Oct. 9th, 2019 from 11am-6pm.**
- Pick up your entries at on Oct. 21st 2019 from 11am-6pm in Sage Hall
- Entry Fees:
 - Free for 4-H Members
- All entries must have been canned or prepared by the exhibitor since the close of last year's fair; October 21st, 2018.
- Canned goods must be in jars specifically designed for canning.
- Each entry must be properly and completely sealed; no paraffin seals. Rings must be clean and loosened.
- All canned goods must be prepared in accordance with the guidelines in the Ball Blue

Book of Canning, Freezing, and Dehydration,
or as specified on www.homecanning.com

- Entries must be accurately labeled and include:
Name of product, date of pack, method used
(boiling water or steam pressure), and
processing time.
- Each entry will be opened by the judge.
- No fabric toppers or decorations allowed.
- Please note the headspace allowances:
Low-acid foods, vegetables and meats = 1 inch
Acidic foods, fruits, and tomatoes = ½ inch
Juices, jams, jellies, pickles, relishes = ¼ inch

DIVISION 308 – PRESERVED FOODS

2 standard canning jars

CLASS

- 1 Canned Fruit; Specify
- 2 Canned Vegetables; Specify
- 3 Jams, Any; Specify
- 4 Jellies, Any; Specify
- 5 Preserves, Marmalades, Butters,
Any; Specify
- 6 Pickles, Relishes, Sauces, Any; Specify
- 7 Dehydrated Foods, Any
(1 fruit roll, 4 pieces of jerky)
- 8 Any Other; Specify



4-H - PHOTOGRAPHY

- **Entry Forms due Sep. 21, 2019**
- Enter online @
www.desertempirefair.com/fairfun/stillexhibits
(you may also enter at the fair office).
- **Bring all entries to Desert Valleys FCU
Community Complex (formerly Mesquite
Hall) on Oct 8th or Oct 9th, 2019 from 11am-
6pm.**
- Pick up your entries at on Oct. 21st, 2019 from
11am-6pm in Sage Hall
- Entry Fees:
 - Free for 4-H Members
- All 4-H Photography entries must follow the
Rules for Adult Photography.

DIVISION 309 – PHOTOGRAPHY

DIVISION 310 – MINI PHOTOS

(4" X 6" and 5" x 7")

CLASS

- 1 Domestic Animals - Color
- 1a Wild Animals - Color
- 1b Insects - Color
- 1c Reptiles - Color
- 2 Landscape - Color
- 3 Waterscape (Rivers, lakes, ocean as
main subject) - Color
- 4 Flowers - Color
- 5 Trees - Color
- 6 People - Color
- 7 Vehicles (cars, boats, etc.) - Color
- 8 Buildings / Architecture - Color
- 9 Any Other, Specify - Color
- 10 Domestic Animals – Black & White
- 11 Wild Animals – Black & White
- 11a Insects – Black & White
- 11b Reptiles – Black & White
- 12 Landscape – Black & White
- 13 Waterscape (Rivers, lakes, ocean as
main subject) – Black & White
- 14 Flowers – Black & White
- 15 Trees – Black & White
- 16 People – Black & White
- 17 Vehicles (Cars, boats, etc.)– Black & White
- 18 Buildings / Architecture – Black & White
- 19 Any Other; Specify

4-H - ARTS & CRAFTS

- **Entry Forms due Sep. 21, 2019**
- Enter online @
www.desertempirefair.com/fairfun/stillexhibits
(you may also enter at the fair office).
- **Bring all entries to Desert Valleys FCU
Community Complex (formerly Mesquite
Hall) on Oct 8th or Oct 9th, 2018 from
11am-6pm.**
- Pick up your entries at on Oct 21st, 2019 from
11am-6pm in Sage Hall
- Entry Fees:
 - Free for 4-H Members

DIVISION 311 – ARTS & CRAFTS

CLASS

- 1 Doll Making
 - 2 Fabric Painting
 - 3 Photo Album / Scrapbooking
- SPECIAL RULES:** Single page or two

page spread, not back-to-back. No books. Page Protectors must be on pages. All four edges should be secured to help keep pages intact during entry processing, judging and display. Judging will consider journaling, arrangement, creativity, and craftsmanship. All items part of the judging must be visible without opening the protective sleeve.

- 4 Holiday Decorations
- 5 Dough Art, Clay, Ceramics, etc.; Specify
- 6 Jewelry
- 7 Candles
- 8 Recycled Items – each entry must contain at least 80% recycled materials. Include an explanation of what the materials were and how they are being used in a new way (ex. A plastic bottle is now a flower vase, a pile of scrap paper and glue is now a notepad)
- 9 Paper Art
- 10 Metalwork
- 11 Woodworking
- 12 Leatherwork
- 13 Rocketry
- 14 Any Other; Specify



4-H - SKILLS & LEARNING PROJECTS

- **Entry Forms due Sep. 21, 2019**
- Enter online @ www.desertempirefair.com/fairfun/stillexhibits (you may also enter at the fair office).
- **Bring all entries to Desert Valleys FCU Community Complex (formerly Mesquite Hall) on Oct 8th or Oct 9, 2019 from 11am-6pm.**
- Pick up your entries at Sage Hall on Oct. 21st, 2019 from 11am-6pm.
- Entry Fees:
 - Free for 4-H Members

DIVISION 314 – LEARNING PROJECTS

CLASS

- 1 Animal Projects
- 2 Any Other Project; Specify

DIVISION 315 – TABLE SETTINGS

- Each entrant will be given a 28” wide area of a banquet table (1/3 of the table) for a single place setting.
- A menu card must be included, and all settings, utensils, and glassware necessary for the menu must be used.
- Overall nutritional value of the menu will be 1/4 of the judging score.
- A theme-oriented centerpiece, NO fresh flowers – must be included.
- **Special Set Up Date: Oct. 16th, 2019 2-6pm**

CLASS

- 1 Fair Theme “**Family Fun, Food & Farm Animals**”

4-H - FINE ARTS

- **Entry Forms due Sep. 21, 2019**
- Enter online @ www.desertempirefair.com/fairfun/stillexhibits (you may also enter at the fair office).
- **Bring all entries to Desert Valleys FCU Community Complex (formerly Mesquite Hall) on Oct 8th or Oct 9th, 2019 from 11am-6pm.**
- Pick up your entries at on Oct. 21st, 2019 from 11am-6pm.
- Entry Fees:
 - Free for 4-H Members
- Framed paintings must be wired for hanging from pegboard.

DIVISION 316 – PAINTING & DRAWING CLASS

- 1 Pen
- 2 Pencil – Colored
- 3 Pencil - Other
- 4 Pastels
- 5 Oil
- 6 Watercolor
- 7 Acrylic
- 8 Markers
- 9 Color Crayons
- 10 Mixed Media
- 11 Computer-generated Art (No Clip-Art)
- 12 Collages - Any
- 13 Any Other Medium; Specify





GIRL SCOUTS DIVISIONS

Danish Judging

Open to Girl Scouts at all levels.

Danish Judging, with each entry being judged on its own merits, will be used.

A separate entry form is to be used for all Girl Scout entries.

Girl Scouts may also enter any non-Scout project as a Junior entry in the Junior Department.

Judging criteria will include workmanship, overall appearance, and creativity.

Please use our group entry form for all Girl Scout entries.

- **Entry Forms due Sep. 21, 2019**
- Enter online @ www.desertempirefair.com/fairfun/stillexhibits (you may also enter at the fair office).
- **Bring all entries to Desert Valleys FCU Community Complex (formerly Mesquite Hall) on Oct 8th or Oct 9th, 2019 from 11am-6pm.**
- Pick up your entries at Sage Hall on Oct. 21st, 2019 from 11am-6pm.
- Entry Fees:
 - Free for all Girl Scout Members

DIVISION 300 – YOUTH ORGANIZATION BOOTH

- *Incorporate the fair theme in showcasing your organization.*
- *Set up times will be Oct. 15th & 16th*
- *Your display must be in place by 5pm on Oct. 16th to eligible for the “Best Use of Fair Theme by a Youth Organization: ribbon.*
- *Please call (760) 375-8000 to arrange a set up time.*
- *Youth participation in preparation and setup weighs heavily in the judging.*

FAIR THEME: “Family Fun, Food, & Farm Animals”

CLASS

- 1 Any Youth Club, Class or Organization

LIVING SKILLS

DIVISION 350 – HOBBIES

See Collections rules at the end of the Girl Scouts Divisions Section.

Special Collections Set-Up time is Oct. 16th, 2019 from 2pm-6pm

CLASS

- 1 Daisy – Any
- 2 Brownies – Try it suggestions: Hobbies
- 3 Juniors – Badge suggestions: Collecting, Hobbies, Doing
- 4 Cadet and Older – I.P. Suggestions: Collecting

DIVISION 351 – STITCH IT TOGETHER

Examples: Button Collages, Embroidery, Patchwork Quilts, etc.

CLASS

- 1 Daisy – Any
- 2 Brownies – Try it suggestions: Stitch it Together
- 3 Juniors – Badge suggestions: Sew Easy, Folk Art
- 4 Cadet and Older – I.P. Suggestions: Textile Arts, Folk Art



DIVISION 352 - COLORS & SHAPES

Examples: Weaving color patterns, yarn painting, dough shapes, etc.

CLASS

- 1 Daisy
- 2 Brownies
- 3 Juniors
- 4 Cadet and Older

DIVISION 354 - JEWELRY AND ACCESSORIES

Examples: Necklace, Bracelet, Pin Purse, Scarf, etc.

CLASS

- 1 Daisy
- 2 Brownies
- 3 Juniors
- 4 Cadet and Older



DIVISION 355 - PAINTINGS & DRAWINGS

Examples: Weaving color patterns, yarn painting, dough shapes, etc.

CLASS

- 1 Daisy
- 2 Brownies
- 3 Juniors
- 4 Cadet and Older

WHATS OUT THERE?

DIVISION 356 – CARVING & WOODWORKING

Any Media: Wood, Soap, etc.

CLASS

- 1 Daisy
- 2 Brownies
- 3 Juniors
- 4 Cadet and Older

DIVISION 357 – SCIENCE WONDERS

Examples: Homegrown Crystals, etc.

CLASS

- 1 Daisy
- 2 Brownies
- 3 Juniors
- 4 Cadet and Older

DIVISION 359 – RECYCLE IT

Examples: See DIV 266 for Special Rules.

CLASS

- 1 Daisy
- 2 Brownies
- 3 Juniors
- 4 Cadet and Older



PEOPLE OF THE WORLD

DIVISION 360 – CRAFTS

Examples: Ethnic Jewelry, Clothing, Origami, Egg Painting, etc.

CLASS

- 1 Daisy
- 2 Brownies
- 3 Juniors
- 4 Cadet and Older

DIVISION 361 – PUPPETS, DOLLS, & PLAYS

Examples: Finger Puppets, Yarn Dolls, Marionettes, etc.



CLASS

- 1 Daisy – Any
- 2 Brownies – Try It Suggestions: Let's Pretend, Puppets, Dolls and Plays
- 3 Juniors – Badge Suggestions: Theater
- 4 Cadet and Older – I.P. Suggestions: Performing Arts, The Plays the Thing.

SPECIAL RULES FOR COLLECTIONS:

- Collections **MUST** be accompanied by a written statement giving a brief history of when and why the collection was started, why the theme of the collection is important to the collector, and mentioning any unique items in the collection. The write up is a major part of the judging.
- **Provide a photograph of the collection, if possible, with the entry form.**
- No more than half of the items may have been shown at a previous Desert Empire Fair. Significant additions must have been made since then.
- **Special set-up date: Oct. 15th & 16th, from 2pm-6pm.**
- **Collections must be arranged by the exhibitor.**
- The exhibitor may provide a display case if desired.



BOY SCOUTS DIVISIONS

Danish Judging

Open to Boy Scouts at all levels.

Danish Judging, with each entry being judged on its own merits, will be used.

A separate entry form is to be used for all Boy Scout entries.

Boy Scouts may also enter any non-Scout project as a Junior entry in the Junior Department.

Judging criteria will include workmanship, overall appearance, and creativity.

Please use our group entry form for all Boy Scout entries.

- **Entry Forms due Sep. 21, 2019**
- Enter online @ www.desertempirefair.com/fairfun/stillexhibits (you may also enter at the fair office).
- **Bring all entries to Desert Valleys FCU Community Complex (formerly Mesquite Hall) on Oct 8th or Oct 9th 2019 from 11am-6pm.**
- Pick up your entries at Sage Hall on Oct. 21st, 2019 from 11am-6pm.
- Entry Fees:
 - Free for all Boy Scout Members

DIVISION 300 – YOUTH ORGANIZATION BOOTH

- *Incorporate the fair theme in showcasing your organization. – Den, Pack, Patrol, Troop, or the District or OA.*
- *Set up times will be between Oct. 15th and Oct. 16th*
- *Your display must be in place by 5pm on Oct. 16th^h to eligible for the “Best Use of Fair Theme by a Youth Organization: ribbon.*
- *Please call (760) 375-8000 to arrange a set up time.*
- *Youth participation in preparation and setup weighs heavily in the judging.*

FAIR THEME ”Family Fun, Food & Farm Animals”

CLASS

- 1 Any Youth Club, Class or Organization

DIVISION 375 – CUB SCOUTS

CLASS

- 1 Pinewood Derby Car
- 2 Raingutter Regatta Boat
- 3 Patch Collection Display (Note size of display on entry form)
- 4 Arts & Crafts Project
- 5 Leathercraft Project
- 6 Woodworking
- 7 Other as approved by Leader; Specify



DIVISION 376 – BOY SCOUTS

CLASS

- 1 Beadwork
- 2 Indian Craft
- 3 Leather Craft
- 4 Wood Project
- 5 Patch Collection Display (Note size of display on entry form)
- 6 Other, as approved by Leader; Specify




SPECIAL RULES FOR COLLECTIONS:

- Collections **MUST** be accompanied by a written statement giving a brief history of when and why the collection was started, why the theme of the collection is important to the collector, and mentioning any unique items in the collection. The write up is a major part of the judging.
- **Provide a photograph of the collection, if possible, with the entry form.**
- No more than half of the items may have been shown at a previous Desert Empire Fair. Significant additions must have been made since then.
- **Special set-up date: Oct. 15th & 16th , from 2pm-6pm.**
- **Collections must be arranged by the exhibitor.**
- The exhibitor may provide a display case if desired.

ENTRY FORMS ARE DUE: SEPTEMBER 21, 2019

Entry Form: JUNIOR (Non-Animal)

Last Name	First Name				Desert Empire Fair 520 S. Richmond Ridgecrest, CA 93555 (760) 375-8000 www.desertempirefair.com info@desertempirefair.com
Mailing Address					
City	State				
			Exhibitor's Birthdate		
Phone			Parent's Signature		

_____ Juniors

_____ Special Needs

_____ 4-H

Department Name	Division #	Class #	Description of entry	Office Use Only

**Consult Exhibitor's Guidebook for department name, division and class numbers, and entry closing dates.*

LIABILITY-This receipt limits our liability-PLEASE READ!!!

"The exhibitor agrees to defend, indemnify and hold harmless the fair, the County and the State of California from and against any liability, claim loss or expense (including reasonable attorneys' fees) arising out of any injury or damage, which is caused by, arises from or is in any way connected with participation in the program or event, excepting only that caused by the sole active negligence of the Fair. The Fair Management shall not be responsible for accidents or losses that may occur to any of the exhibitors or exhibits at the Fair. The exhibitor (or parent/guardian of a minor) is responsible for any injury or damage resulting from the exhibitor's participation in the program or event. This includes any injury to others or to the exhibitor or to the exhibitor's property."


For 4-H entries you must have your 4-H Community leader sign below.

Community Leader's Name

Community Leader's Signature

Exhibitor's Signature _____ Date _____ Email: _____

ENTRY FORMS ARE DUE: SEPTEMBER 21, 2019

Last Name	First Name	Entry Form: ADULT (Non-Animal)		Desert Empire Fair 520 S. Richmond Ridgecrest, CA 93555 (760) 375-8000 www.desertempirefair.com info@desertempirefair.com	
Mailing Address					
City	State				Zip
Phone					

☐ Baked Goods
 ☐ Preserved Foods
 ☐ Cloth/Text
 ☐ Quilting
 ☐ Creative Writing
 ☐ Fine Arts
 ☐ Arts&Crafts
 ☐ Photography

Department Name:	Division #	Class #	Description of entry:	Entry Fee

TOTAL ENTRY FEES:	\$
--------------------------	----

LIABILITY-This receipt limits our liability-PLEASE READ!!!

"The exhibitor agrees to defend, indemnify and hold harmless the fair, the County and the State of California from and against any liability, claim loss or expense (including reasonable attorneys' fees) arising out of any injury or damage, which is caused by, arises from or is in any way connected with participation in the program or event, excepting only that caused by the sole active negligence of the Fair. The Fair Management shall not be responsible for accidents or losses that may occur to any of the exhibitors or exhibits at the Fair. The exhibitor (or parent/guardian of a minor) is responsible for any injury or damage resulting from the exhibitor's participation in the program or event. This includes any injury to others or to the exhibitor or to the exhibitor's property."

**Consult Exhibitor's Guidebook
 for department name, division
 and class numbers, and entry
 closing dates.*

Exhibitor's Signature _____ Date _____ Exhibitor Email: _____

ENTRY FORMS ARE DUE: SEPTEMBER 21, 2019

Entry Form: GROUP or SCHOOL (Non-Animal)



Desert Empire Fair
520 S. Richmond
Ridgecrest, CA 93555
(760) 375-8000
www.desertempirefair.com
info@desertempirefair.com

Teacher/Leader's Name	<div style="color: blue; font-weight: bold;">Entry Form: GROUP or SCHOOL (Non-Animal)</div>		Desert Empire Fair 520 S. Richmond Ridgecrest, CA 93555 (760) 375-8000 www.desertempirefair.com info@desertempirefair.com
Teacher/Leader's Mailing Address			
City _____ State _____ Zip _____			
Teacher's Phone # _____			
_____ Name of School / Club / Group			

Department Name	Division #	Class #	Name of Student	Description of Entry

LIABILITY-This receipt limits our liability-PLEASE READ!!!

"The exhibitor agrees to defend, indemnify and hold harmless the fair, the County and the State of California from and against any liability, claim loss or expense (including reasonable attorneys' fees) arising out of any injury or damage, which is caused by, arises from or is in any way connected with participation in the program or event, excepting only that caused by the sole active negligence of the Fair. The Fair Management shall not be responsible for accidents or losses that may occur to any of the exhibitors or exhibits at the Fair. The exhibitor (or parent/guardian of a minor) is responsible for any injury or damage resulting from the exhibitor's participation in the program or event. This includes any injury to others or to the exhibitor or to the exhibitor's property."

**Consult Exhibitor's Guidebook for department name, division and class numbers, and entry closing dates.*

Teacher's Signature _____ Date _____ Teacher's Email: _____

Exhibitor Guidebook

For Entering Homegrown Items in the Fair
Floriculture / Horticulture

FAMILY FUN,



FOOD, AND



FARM ANIMALS



October 18 - 20, 2019

Desert Empire Fair, Ridgecrest, CA

69th Anniversary



Oasis Garden Club of Indian Wells Valley

FLORICULTURE / HORTICULTURE

Theme

“Family Fun, Food, and Farm Animals”

A Standard Flower Show

October 18-20, 2019

Sponsored by

Board of Directors of the Desert Empire Fair and Oasis Garden Club of Indian Wells Valley,
California Garden Clubs, Inc., and National Garden Clubs, Inc.

Chairman: Wanda Hewett
Co-Chairman: Merrilee Ray



TIME TABLE OF EVENTS

October 11 (Friday) Deadline for ALL Flower Show Entry Forms

Entry Forms and Tags may be picked up at club meetings or at the Fair Office.

Desert Empire Fair Office

520 S. Richmond Road

Ridgecrest, CA 93555

760-375-8000

Entry forms and fees must be **received** by each Entry Chairman on or before October 11, 2019.

Please mail to the following Entry Chairmen/Consultants:

Horticulture

Wanda Hewett — 760-377-4655

7927 N. Bull Run, Inyokern, CA 93527

Design

Gisela Sotomayor — 760-371-7650

208 W. Cielo, Ridgecrest, CA 93555

Special Exhibits (Adult Educational Exhibits)

Lela Herigstad — 760-375-9096

475 E. Far Vista Ave., Ridgecrest, CA 93555

Special Exhibits (Youth)

Donna Thomas — 760-377-4525

8158 Panorama Trail, Inyokern, CA 93527

October 11 (Friday) Staging and Setup

Desert Valley FCU Community Complex, 9:00 am

October 16 (Wednesday) Entries Received

Desert Valley FCU Community Complex, 1:00 pm to 4:30 pm

October 17 (Thursday) Entries Received

Desert Valley FCU Community Complex, 8:00 am to 10:00 am

October 17 (Thursday) Judges' Luncheon

12:00 Noon

October 17 (Thursday) Judging

Desert Valley FCU Community Complex, 1:30 pm

Show Open to the Public

October 18, Friday 4:00 pm to Midnight

October 19, Saturday..... Noon to Midnight

October 20, Sunday Noon to 8:00 pm

Building and Show Closes at 8:00 pm

October 21 (Monday) Pick-up Exhibits and Dismantle Show

Desert Valley FCU Community Complex 8:00 am to 9:00 am, dismantle until complete

Note: Desert Valley FCU Community Complex was formerly Mesquite Hall.

GENERAL RULES

1. This is a Standard Flower Show in conformance to standards recognized by the National Garden Clubs, Inc., (NGC), California Garden Clubs, Inc., and the 53rd District Agricultural Association, California State Fair System.
2. **Liability:** In no case will the sponsoring organizations, Committee members and/or Desert Empire Fair Board be responsible for any loss, injury of any character, to any article or persons while at the show or enroute. Every reasonable precaution to ensure safety of exhibits and persons shall be taken. Mark all property in a concealed place with name, address, and phone number.
3. Competition is open to all amateur gardeners within Fair boundaries. Organizations for public benefit are permitted to enter in Special Exhibits Division. **Entry forms, entry numbers, and tags are available at the Desert Empire Fair Office, 760-375-8000.**
4. **Entry donation of 25 cents per entry must be prepaid for Adult entries.** Make check payable to Oasis Garden Club and indicate Horticulture-Floriculture. **Fee is waived for Youth entrants.**
5. **All entries must be preregistered.** Use separate forms for each type of entry: Horticulture, Design, Special Exhibit (Educational or Youth). Please use a separate sheet for each section in the Horticulture Division. Additional forms are available from the Fair Office, many local businesses, and other desert cities.
6. **Judging will begin at 1:30 pm Thursday, October 17, 2019.** Judges are accredited by NGC. The Judges' decision is final. The standard Award system will be used. It allows only one first (blue), one second (red), and one third (yellow) ribbon to be awarded in each class or subclass, if merited. More than one honorable mention (white) may be given, if merited. **Only required personnel will be permitted in the showroom during judging.** The flower show chairman and co-chairman will be present during the judging and will be permitted to answer questions.
7. The schedule is the law of the show and all entries must conform.
8. No wedging with any material is permitted due to the need for water replenishment.
9. Leaves of fresh plant material must be removed below water line in container of all exhibits.
10. Exhibitors are responsible for exhibits remaining in good condition throughout the show. If not, awards may be withheld.
11. The State policy concerning the use of the State's native plants, noxious plants and those on its conservation list must be followed. A list of the endangered plants of California can be obtained from the Horticulture Chairman.
12. All entry names (common and botanical names) should be referenced from *Sunset Western Garden Book 2012 Edition* only.



ENTRY PROCEDURE

1. Fill out two copies of entry form with the following information: name, address, zip code, signature, current date, phone number, entry name, variety and/or color, section letter (instead of division), class number and name, fee and total of fees (except Youth). Keep one copy and mail the other.
2. Entry donation (fee) is 25 cents per entry and must be prepaid for Adult entries. Make check payable to Oasis Garden Club, and indicate Horticulture-Floriculture. (Fee is waived for Youth entrants).
3. Entry forms and fees must be **received** by each Entry Chairman on or before October 11, 2019.
4. Forms are to be mailed to the following Entry Chairmen/Consultants:
 - Horticulture**
Wanda Hewett — 760-377-4655
7927 N. Bull Run, Inyokern, CA 93527
 - Design**
Gisela Sotomayor — 760-371-7650
208 W. Cielo, Ridgecrest, CA 93555
 - Special Exhibits (Adult Educational Exhibits)**
Lela Herigstad — 760-375-9096
475 E. Far Vista Ave., Ridgecrest, CA 93555
 - Special Exhibits (Youth)**
Donna Thomas — 760-377-4525
8158 Panorama Trail, Inyokern, CA 93527
5. Fill out an Entry Tag for each exhibit before bringing it to Desert Valley FCU Community Complex. For any questions regarding Horticulture entry names, please contact Wanda Hewett, Chairperson, prior to October 11th. Please use a separate entry sheet for each Horticulture Section.
6. Bring complete exhibits to Desert Valley FCU Community Complex, October 16, 2019, 1:00 to 4:30 pm or October 17, 2019, 8:00 to 10:00 am. (Please unload your car quickly and move it to make room for other exhibitors).
7. All entries must conform to the schedule. Classification Members will check for conformity and assist with exhibit names and identification.
8. A “ready area” will be available for assembling exhibits, etc.
9. Members will direct and assist with location of exhibits in showroom.
- 10. All exhibits must be in place by 10:00 am Thursday, October 17, 2019.**
11. Remove items other than official exhibits and award materials from the showroom before judging. All personal items will be out of view.
12. Officers and Chairmen are to stay and help get the show ready for judging.

HORTICULTURE TOP AWARDS

To be eligible for a top rosette, exhibit (specimen) must:

- a. Be an exhibit of fresh plant material grown by the exhibitor, container grown plants for at least 90 days, combination plantings for at least 6 weeks.
- b. Be a first place winner, scoring 95 points or more.
- c. Be properly named, as schedule specifies, giving genus, species, and/or variety/cultivar where available. Common name may be given.

An award must be withheld if no exhibit meets the above requirements.

AWARD OF HORTICULTURAL EXCELLENCE. Division Award given to the finest exhibit meeting the above requirements in the entire Horticulture Division. In Sections where a top award is given, the winning exhibits are the only exhibits in those sections that are eligible. In other Horticulture sections, blue ribbon winners scoring 95 points or more are eligible. Rosette of green, orange, and blue ribbons.

ARBOREAL AWARD – Section A. May be given to a fresh branch with several nodes of a shrub or tree meeting the above requirements. The exhibit must be no longer than 30 inches, measured from cut end to tip of branch. Rosette of two values of green ribbons.

AWARD OF MERIT. May be given to an exhibit meeting the above general requirements in each of the following sections: Section B – Cut and Flowering Specimens, Section D – Roses, Section F – Herbs, Section J – Fruits, Section K – Vegetable. Rosette of orange ribbons.

COLLECTORS SHOWCASE AWARD – Section I. May be given to the finest named collection of at least 5 different cut specimens exhibited in individual containers or container-grown plants in individual containers, or fruits/vegetables/nuts. Must meet above requirements. (Each specimen within the exhibit selected must score 95 points or more). Rosette of brown and green ribbons.

FAIR AWARDS

CLUB AWARD – Section C “Natives.” May be given to an exhibit meeting the above requirements. Rosette of bright yellow and orange ribbons.

DIRECTOR AWARD – Section G “Container.” may be given to the best exhibit. Rosette of gold and brown ribbons.

CHAIRMAN AWARD – Section E “Decoratives.” May be given to the best exhibit. Rosette of turquoise and white ribbons.



TOP DESIGN AWARDS

To be eligible, designs must:

- a. Contain plant material – fresh and/or dry.
- b. Be a first place winner, either Creative or Traditional, scoring 95 points or more.
- c. Have a minimum of 2 classes with at least 4 exhibits in each class.
- d. Be from sections designated in the schedule.
- e. Have NO fresh plant material that has been treated in any manner.
- f. Contain no artificial plant materials.
- g. Be by an Adult exhibitor to receive a Top Design Award.
- h. If no exhibit meets the requirements, award must be withheld.



AWARD OF DISTINCTION – Section L. (Above rules apply). All plant material must be dried. Accessories permitted (must be subordinate to design). Rosette of brown ribbons.

TABLE ARTISTRY AWARD – Section M. Classes 103 & 104. Functional table and flower arrangement fresh or dried/with or without components. Class 105 Exhibition Type I – Exhibition only. Rosette of burgundy ribbons.

DESIGNER'S CHOICE AWARD – Section N. Exhibitor has complete freedom to choose plant materials and other components for this award, within NGC policies. Rosette of purple ribbons.

PETITE AWARD – Section P. Designs must contain some plant material. Small rosette of light blue and white ribbons.

SPECIAL EXHIBITS AWARDS

EDUCATIONAL AWARD – Section Q. Awarded to exhibit designed to instruct the public in some phase of NGC objectives and scoring 95 points or more. A minimum of 2 education exhibits designated as eligible, each titled and briefly described. Each exhibit must occupy a minimum of 18 square feet of surface area. Rosette of brown and white ribbons.

YOUTH AWARDS – Sections R, S, and T. Awards may be offered and awarded if merited, in designated class(es) or section(s) of an adult flower show. One for each age category in Design, Horticulture, and Educational. Rosette of red, white, and blue ribbons.

SCALE OF POINTS FOR ALL ENTRIES

The scale of points for all entries can be found on pages 128-130 in the Handbook for Flower Shows, Revised 2017.

Copies are available from the entry chairman of Horticulture, Design and Special Exhibits. The same scale of points for Adults is used for Youth, however youth require 90 instead of 95 for the Top Youth Awards.

DIVISION I

HORTICULTURE FOLIAGE PLANTS

“Family Fun”

GENERAL RULES – DIVISION I

1. All plant material(s) must be fresh and must be grown by the exhibitor. Container-grown plants in one's possession at least 90 days, and combination plantings for at least 6 weeks.
2. Exhibit must be named, giving genus and species, variety/cultivar, where available.
3. All horticulture classes are open to any amateur gardener.
4. More than 1 entry per class may be made by an exhibitor provided each is of a different cultivar type, or color. (Show Committee may divide exhibits by species and/or cultivar.)
5. All entries must have an entry tag/card that includes exhibitor number, exhibitor's name and phone number. It is the exhibitor's responsibility to have entries and entry tags checked by the Classification and/or Entries Committee.
6. Clean, clear, brown glass bottles or jars appropriately sized (to specimen) are to be provided by the exhibitor.
7. Entry tags are to be placed with exhibits, with exhibitor's name hidden and tag number and exhibitor entry number exposed. (Remove string from tag and attach tag to bottle with a rubber band).
8. Exhibits must be clean, free from insects, disease, spray residue, leaf shine, oil, etc.
9. Unless otherwise stated, the type of fruit or vegetable desired for exhibit will be the uniform commercial size, rather than the overgrown. Number required for display is in parentheses. Those not in schedule – if smaller than a quarter – 5; if larger than a quarter and smaller than a baseball – 3; larger than a baseball – 1.
10. The Classification Committee has the authority to subdivide classes as needed.
11. All Horticulture entries that come in after the deadline shall be placed on the exhibit table and will not be judged.

SCALE OF POINTS FOR HORTICULTURE

Conformance.....	5
Plant Identification.....	5
Peak of Perfection	
Form.....	20
Color.....	20
Maturity/Size.....	20
Condition/Blemishes.....	15
Grooming/Staging	
Grooming.....	10
Staging.....	5
TOTAL.....	100



Note: There are a few plants that could be entered in several possible places, but for consistency please enter these as follows:

Rosemary is to be entered in Herbs, Section F, Class 34

Texas Ranger is to be entered in Section A, Class 3

Desert Willow is to be entered in Section A, Class 1

SECTION A. TREES AND SHRUBS

“DEF Landscape”

Foliage, and/or berried, fruited or coned branch. One fresh, named tree or shrub branch with several nodes. The exhibit must be no longer than 30 inches, measured from cut end to tip of branch. Eligible for Arboreal Award.

Class

1. Deciduous tree
 - a. In bloom
 - b. Green foliage
 - c. Colored or variegated foliage
 - d. Berried, fruited, or coned
 - e. Any other
2. Evergreen tree
 - a. In bloom
 - b. Green foliage
 - c. Colored or variegated foliage
 - d. Berried, fruited, or coned
 - e. Needled
 - f. Any other
3. Deciduous shrub
 - a. In bloom
 - b. Green foliage
 - c. Colored or variegated foliage
 - d. Berried, fruited, or coned
 - e. Any other
4. Evergreen shrub
 - a. In bloom
 - b. Green foliage
 - c. Colored or variegated foliage
 - d. Berried, fruited, or coned
 - e. Any other

SECTION B. CUT FLOWERING SPECIMENS “Sparkling Lights”



Annuals, biennials, perennials including modified stems, corms, rhizomes, and other bulbs. Eligible for Award of Merit.

Class

5. Zinnia
6. New England Michaelmas Daisy
(*Symphytotrichum novae-angliae*) - common perennial
7. Chrysanthemum, Garden Mum
(*Chrysanthemum morifolium*)
8. Blanket Flower (*Gaillardia aerostata*)
(3 blooms)
9. Marigold (*Tagetes* sp.), name species if known
10. Sage
 - a. (*Salvia* sp.) (name species and/or cultivar if known, ex. ‘Blue Bedders’, ‘White Porcelain’)
 - b. Russian Sage (*Perovskia atriplicifolia*)
11. Common Garden Sunflower (*Helianthus annuus*)
12. Society Garlic (*Tulbaghia violacea*)
13. Verbena
14. Vinca (not vine)
15. Four O’ Clock
16. Sweet William
17. Other worry specimen

SECTION C. NATIVES

“California Photos”

Branches must be no longer than 30 inches, measured from cut end to tip. Exhibits **MUST** be homegrown. Picking specimen from the “open desert” is prohibited (the fines are substantial). Eligible for Club Award.

Class

18. Trees (one branch, not to exceed 30 inches in length)
 - a. Deciduous
 - b. Evergreen
19. Shrubs (one branch, not to exceed 30 inches in length)
 - a. Deciduous
 - b. Evergreen
20. Flowers (up to 3 stems)

SECTION D. ROSES

“Family Enjoyment”

Judged for blossom form and color, stem, and foliage. For exhibition, the rose is usually one-half to three-fourths open, with petals spiraling symmetrically to a well-defined pointed center that is centered and not split. (Each rose is judged against perfection of the cultivar, making its name especially important. Those not named or misnamed should not win a blue ribbon. Discolored or deformed petals may be removed from the back leaving no tab). Eligible for Award of Merit.

Class

21. Floribunda (flowers in clusters; often not fragrant; bushy habit), one naturally-grown spray with foliage
22. Hybrid Tea (long straight stems; single on stem; often fragrant; often repeat flowering), one disbudded bloom and foliage

23. Grandiflora (cross between Floribunda and Hybrid Tea; large bush; single or clustered flowers)
 - a. One naturally-grown spray with foliage
 - b. One bloom and foliage
24. Miniature rose with foliage (dwarf version of a full size variety)
 - a. One naturally-grown spray with foliage
 - b. One bloom and foliage
25. Other worthy rose with foliage
 - a. One naturally-grown spray with foliage
 - b. One bloom and foliage

SECTION E. DECORATIVES

“Fine Exhibits”

Seeds, pods, bracts, foliage. Flowers not required or desired. Height limited to 4 feet. Up to 5 stems in appropriate sized container. Eligible for Chairman Award.

Class

26. Umbrella Plant, (*Cyperus alternifolius*)
27. Muhlenburgia (Deergrass, Pink Muhly,...)
28. Ferns
29. Other worthy decoratives not listed above



SECTION F. HERBS

“Spice is Right”

To be shown as cut specimens, one stem to a bottle. Eligible for Award of Merit.

Class

30. Basil (*Ocimum basilicum*)
31. Mint (*Mentha*), name species if known
 - a. Peppermint (*Mentha piperita*)
 - b. Spearmint (*Mentha spicata*)
 - c. Other mint
32. Oregano (*Origanum vulgare*)
33. Parsley (*Petroselinum crispum*)
34. Rosemary (*Rosmarinus officinalis*), name cultivator if known - enter in Herbs only
35. Sage (*Salvia officinalis*)
36. Tarragon (*Artemisia dracunculus*)
37. Thyme (*Thymus* sp.), add cultivar name if known, ex.: *Thymus* sp. ‘Lemon Scent’
38. Lavender (*Lavandula* sp.), name species if known, ex.: Spanish Lavender, *Lavandula stoechas*. Name species and cultivar if known, ex. English Lavender, *Lavandula angustifolia* ‘Hidcote’
39. Other worthy herb not listed above



SECTION G. CONTAINER-GROWN PLANTS

“Concessions”

May be double-potted. Eligible for Director Award.

- A. 6 inches inner diameter or under
- B. Between 6 and 14 inches, inner diameter

Class

40. Grown for foliage A. B.
41. Flowering plants A. B.
42. Cacti A. B.
43. Christmas Cacti A. B.
44. Succulents A. B.

SECTION H. VINES

“Family Dance”

Stem no longer than 20 inches, with or without flowers.

Class

45. Honeysuckle (*Lonicera* sp.), name species and cultivar if known, ex. *Lonicera sempervirens* ‘Major Wheeler’
46. Ivy (*Hedera* sp.), name species if known
47. Other worthy vine

SECTION I. COLLECTIONS

“Ducks in a Row”

A collection of correctly named (common name and botanical name), exhibitor-grown, fresh plant materials exhibited for cultural perfection. **Each collection must consist of one of the following:**

- * Five or more different cut specimens exhibited in individual containers
- * Five or more different container grown plants exhibited in individual containers
- * Five specimens, sets of fruits, vegetables, or nuts, exhibited on plates, mats, etc. If individual specimens are small, such as nuts, see Horticulture rule #9 for the number in each “set” of specimens. A set may consist of 3 or 5 units, e.g., three nuts of one type, to serve as one specimen. For example, one collection could consist of 15 nuts of 5 different types.

Specimens within a collection may consist of:

- * One family (like Roses – Rosaceae).
- * Plants with like characteristics (i.e., Chrysanthemums).
- * Different types or species within a genus.
- * Different cultivars within a genus or species.
- * Five different cut/container-grown annuals, biennials, perennials, or sets of fruits, vegetables or nuts.

Preregistration is a must for the space allotment collections take. Eligible for Collectors Showcase Award.

Class

48. A collection of 5 or more named (genus and species or cultivar) cut specimens
49. A collection of 5 or more named container-grown plants all within one genus
50. A collection of 5 or more named fruits or 5 or more named vegetables or 5 or more named nuts. Other foliage permitted.

SECTION J. FRUITS, NUTS, AND BERRIES

“Frozen Bananas”

Fruits, to fulfill State Fair policy, should be of marketable size as one would find in a grocery store. Flower Show Committee to provide containers for display. Eligible for Award of Merit.

Class

51. Apple (*Malus*) (3)
52. Pomegranate (*Punica granatum*) (1)
53. Other worthy fruit or nut

SECTION K. VEGETABLES

“Corn on the Cob”

Vegetables, to fulfill State Fair policy, should be of marketable size as one would find in a grocery store. Flower Show Committee to provide containers for display. Eligible for Award of Merit.

Class

54. Onion (*Allium cepa*)
 - a. Green onion (5)
 - b. Dried onion (1 bulb)
55. Garlic (*Allium sativum*) (3 bulbs, not cloves)
56. Chives (*Allium sativum schoenoprasum*) (5 stems)
57. Pepper (*Capsicum annuum*) (3, if small)
58. Watermelon (*Citrullus lanatus*) (1)
59. Cantaloupe, Honeydew or Muskmelon (*Cucumis melo*) (1)
60. Squash (*Cucurbita* sp.) (1)
61. Tomato (*Solanum lycopersicum*)
 - a. Cherry Tomato (*S. lycopersicum* var. *cerasiforme*) (3)
 - b. Other worthy tomato (cultivar please!) (See Horticulture rule #9 for number)
62. Sunflower (*Helianthus annuus*) 1 seed head
63. Pumpkin
64. Monstrosities (1)
65. Other worthy vegetable

DIVISION II DESIGN “Fun and Food”

GENERAL RULES – DIVISION II

1. Entry forms must be made in advance for DESIGN classes by entry deadline: October 11th. If unable to fulfill a commitment in design class, exhibitor must find a substitute and notify the Design Entry Chairman **immediately**.
2. There can be no more than 4 entries in each class except for the small and miniature designs and the novice classes. All classes are open to the public. Novices (never won a blue ribbon in design in a Standard Flower Show) may enter all classes.
3. All exhibits must contain some plant material – fresh and/or dried (foliage, blooms, fruits and/or vegetables, etc.) as specified in the schedule. Living plants (growing plants with roots) are not permitted in designs.
4. No artificial flowers, fruit, or foliage are permitted.
5. An exhibitor may enter as many classes as desired, but only one exhibit per class. (Exhibitors are requested to stand by in preparation area until classification is completed.)
6. Each exhibit must be the work of the exhibitor.
7. Plant materials need not be grown by the exhibitor.
8. Fresh plant material **cannot** be treated in any manner, including artificial coloring.
9. Contrived flowers and other forms made of real plant material, fresh or dried, may be used.
10. Cut fruit or prepared foods are not allowed. Natural bird’s nests, stuffed birds, butterflies, or other insects, fish, birds, or animals are not permitted in design classes. Sea fans, coral sponges, bones, antlers, etc., are permissible if tastefully used.
11. The use of the flag of the United States or the flags of foreign countries is not permitted.
12. Religious symbols must be treated with reverence due them. Landscapes and/or scenes are not acceptable in the Design Division.
13. Frames, backgrounds, and constructions may be used, if appropriate.
14. Accessories **permitted** in any class, Section L, M, N, and P. An accessory is anything in an arrangement in addition to plant material, container, base, background, or mechanics. It must be subordinate in the design.
15. A list of things permitted without schedule approval can be found in the *Handbook for Flower Shows, 2017*, pages 80-83.

SCALE OF POINTS FOR ALL DESIGNS

Conformance to type(7) and to schedule (7)	14
Design Principles	42
Selection of Components	8
Organization of Components	8
Expression	8
Distinction	14
TOTAL.....	100



SECTION L.

“Horse Play”

Using all dried material: may be sprayed, treated, or painted. Accessories permitted. Staged 4 exhibits per 8-foot table (space 24 inches wide). Eligible for Award of Distinction.

Class

100. “Rides”

Designer’s interpretation.

101. “Memories”

Designer’s interpretation.

102. “Rodeo”

Designer’s interpretation.

SECTION M.

“Family Fun”

Designers’ choice of fresh and/or dried plant materials and other components. Space allowed as stated in each class. Eligible for Table Artistry Award.

Class

103. “Fried Chicken” – Functional Table set for two, Alfresco Type. Dining outdoors with any degree of formality and including a completed decorative unit. To be staged on a card table, supplied by exhibitor.

104. “Corn Fritters” – Functional Table set for two, Informal Type. Casual dining and including a completed decorative unit. To be staged on a card table, supplied by exhibitor.

105. “Carnival Games” – Exhibition Table. Created artistically to suggest the service of food with no requirements as to the type or number of table appointments. Plant material must be used. Staged on a card table, provided by exhibitor.

SECTION N.

“Entertainment”

Exhibitor has complete freedom to choose plant materials and components for these designs, height unlimited. Class 106 to be staged on a 4 foot high 18 x 18 inch pedestal which will be provided. Class 107 to be staged on a table. Table space is 24 x 24 inches. Limited to 4 entries in each class. Eligible for Designers Choice Award.

Class

106. “Roller Coaster” – Designer’s choice, staged on a pedestal.

107. “Togetherness” – Designer’s interpretation, using 2 containers to complete a creative design.

SECTION P.

“Chicken Little”

Miniature and small designs. Plant material and other components must be small, as scale is important. Unlimited entries. Eligible for Petite Award.

Class

108. “Mule” – A miniature design, not more than 3 inches in any dimension, all dried plant material.

109. “Snow Cone” – A miniature design, not under 3 inches nor over 5 inches overall, fresh and dry plant materials.

110. “Cream Puff” – Small design, no more than 8 inches in any dimension, all fresh plant material.



DIVISION III SPECIAL EXHIBITS “The Greatest Show”

SCALE OF POINTS FOR EDUCATIONAL EXHIBIT

Educational.....	60
Interest to Viewer (25)	
Clear and Concise Presentation (15)	
Adequate Educational Signs and Tags (10)	
Follows NGC Objectives (10)	
Staging.....	20
Craftsmanship, Technique (10)	
Distinction (10)	
Creativity and Expression.....	20
TOTAL.....	100

The same scale of points as Adults are used for Youth.
Top Youth Awards require 90 points instead of 95.



SECTION Q. SPECIAL ADULT EXHIBITS “Best of Show”

Each exhibit must be comprised of at least 18 square feet of horizontal and/or vertical space in size. Reservations are necessary! Call for space needed and type of staging available. Classes may include accessories. **The use of fresh plant material is encouraged.** Eligible for Educational Award.

Class

Exhibit I - TBA

Exhibit II - TBA

Exhibit III - TBA

SECTION R. YOUTH HORTICULTURE “Kids’ Games”

Fruits, vegetables, and other worthy produce to be shown on staging provided by Committee. Cut specimens to be shown in clean, clear brown glass bottles, one spray or bloom with foliage (if present) attached.

Youth Division:

- (1) Juniors, preschool through age 7;
- (2) Intermediate, ages 8 through 12;
- (3) Advanced, ages 13 through 17.

Eligible for Top Youth Awards, **one in each age group of each section.**

Class

200. “Caramel Corn” – Vegetable, fruit, or sunflower (seed head).

201. “Blue Ribbon” - Container-grown plant (one per pot)

202. “Neon Lights” – Cut flowering specimen (up to 3 stems).



SECTION S. YOUTH DESIGN “Carnival Games”

Artistic design made by exhibitor. Unlimited number of entries. Table space allowed is 12 x 12 inches each. Eligible for Top Youth Awards.

Class

203. “Midway Fun” – Flower arrangement no larger than 12 x 12 inches using bright flowers.

204. “Bumper Cars” – Flower arrangement no larger than 12 x 12 inches using all dry material. May use accessories.

SECTION T. YOUTH EDUCATIONAL EXHIBITS “Sweepstakes”

Class

205. “Contests”

Entry Form Horticulture/Floriculture

Name: _____

Address: _____

City _____ Zip _____ Phone _____

For Official Use Only	
Class #	
Sec #	

Personal No.	Division No.	Section No.	Class No.	Describe Entry	Entry Fee
				1	
				2	
				3	
				4	
				5	
				6	
				7	
				8	
				9	
				10	
				11	
				12	
				13	
				14	
				15	
					Total

Liability– This receipt limits our liability– Read I

Please accept the entries (property) described herein. I am the owner of the property specified herein or the supervisor of the project with authorization to act as agent and to bind the owners of the property in all matters herein. I have read, understand and agree to abide by all the rules and regulations governing the fair entries as published in the official Entry Book. I agree to indemnify, defend and save harmless the fair, its officers, agents, and employees from any and all claims and losses accruing or resulting to any and all persons in connection with my participation in the Fair and from any and all claims and losses accruing or resulting to any person, firm or corporation who may be injured or damaged as a result of my participation.



*53rd District Agricultural Association presents the
69th Annual*

**DESERT EMPIRE FAIR
Jr. Livestock Show & Auction
October 17-20, 2019**

2019 Fair Theme:

“Family Fun, Food & Farm Animals”





CALIFORNIA DEPARTMENT OF
FOOD & AGRICULTURE

Karen Ross, Secretary

November 30, 2018

F2018-09R

TO: All Fair CEO's and Board of Director's

SUBJECT: 2019 Youth for the Quality Care of Animals Program Implementation

Beginning January 1, 2019, the Fairs and Exposition Branch (F&E) will require all California Fairs (County, Citrus & District Agricultural Associations) junior livestock (large and small animal) exhibitors to annually participate in the Youth for the Quality Care of Animals (YQCA) program or a quality assurance program established by their local fair and approved by CDFA. For more information on the YQCA program, please visit www.yqca.org.

If your fair currently has a quality assurance program, please submit it for approval to Jay Carlson. Please reference circular letter [F2018-05](#) for how to confirm and validate a local youth quality assurance program before adoption and implementation.

YQCA hosts an online program for all youth ages with nominal fees. Organizations can explore payment options available through the attached YQCA pdf. There are also options to obtain certification to become a certified instructor.

For additional information, please reference the five attached informational documents on the YQCA program and instructor led training.

If you have any questions or need additional information regarding the YQCA online program, please email help@yqca.com. For any other questions, please direct them to info@yqca.com, or Jay Carlson at (916) 263-3109 or JCarlson@calexpo.com.

Sincerely,

John Quiroz, Branch Chief
Fairs & Exposition Branch

Enclosures

cc: Seth Derner, YQCA
Jennifer Hawkins, YQCA



*The Desert Empire Fair Junior Livestock Committee
welcomes you to our annual show and auction!*

Reminder. . . .

*Please read the enclosed Desert Empire Fair local fair rules
and the CA State rules for Fairs and Expositions prior to
submitting your entry forms.*

*If you have additional questions or concerns please feel free to
contact us.*

Livestock Chairman: Curtis Moore

Phone #: (760) 382-4585 (evenings)

Livestock Co-Chairman: Angie Moore

Phone #: (760) 382-4575 (evenings)

*Or, please feel free to email us @
def_juniorlivestock@yahoo.com*



Show Schedule

Thursday, October 17th, 2019

7:00 am – 2:00 pm
 9:00 am
 2:00 pm
 5:00 pm
 5:30 pm – 7:00 pm
 6:30 pm

Exhibitor Check-In / Pen Assignment
 Rabbit & Cavy Show (ARBA)
 Goat Show (Dairy, Nigerian & Pygmy)
 Mandatory Exhibitor Meeting
 Market Animal Weigh-In (scale area)
 Exhibitor Meet & Greet (Smore's, Pizza & Music)

Livestock Barn # 6
 Livestock Barn # 5
 Boyle Show Arena
 Boyle Show Arena
 Livestock Barn # 5
 Livestock Barn

Friday, October 18th, 2019

8:00 am
 9:00 am
 10:30 am
 10:45 am
 11:00 am
 11:30 am
 3:30 pm
 4:00 pm

Prospect Market Goats / Market Goat
 Feeder Lambs / Market Lambs
 Breeding Sheep
 Boer Breeding Does
 Breeding Swine
 Feeder Swine / Market Swine
 Market Calves / Market Beef
 Beef Showmanship

Boyle Show Arena
 Boyle Show Arena
 Boyle Show Arena
 Boyle Show Arena
 Boyle Show Arena
 Boyle Show Arena
 Boyle Show Arena
 Boyle Show Arena

Saturday, October 19th, 2019

9:00 am
 10:00 am
 11:00 am
 12:30 pm
 2:30 pm
 3:45 pm
 4:00 pm

Market Goat Showmanship
 Sheep Showmanship
 Swine Showmanship
 Mandatory Exhibitor Meeting
 Buyer's Registration & Luncheon
 50-50 Raffle / 2018 Top Buyer Recognition
 Junior Livestock Auction

Boyle Show Arena
 Boyle Show Arena
 Boyle Show Arena
 Boyle Show Arena
 Livestock Office
 Boyle Show Arena
 Boyle Show Arena

Sunday, 20th, 2019

9:00 am
 1:00 pm

Master Showmanship (Primary, Jr. & Sr.)
 Livestock Check out

Boyle Show Arena
 Livestock Barn #6

LIVESTOCK DEPARTMENT LOCAL RULES

The Desert Empire Fair (DEF) Junior Livestock Department follows the California Department of Food and Agriculture, Fairs and Expositions 2019 State Rules for Fairs. Please make sure you read and understand these rules. These rules, local rules and all entry forms can be downloaded and printed from the fair website: www.desertempirefair.org

All exhibitors must complete YQCA training and submit their completion certificate with their entry forms. For information: www.yqca.org

1. By submitting an entry form for any class in the DEF - Jr. Livestock Show you agree that you have read and will abide by the CA State Rules for Fairs, as well as the DEF - Jr. Livestock Show & Auction 'local' rules.
2. **Entries close on September 14th, 2019.** All entries postmarked after September 14th, 2019 are considered late and must include a \$20 late fee. **ABSOLUTELY NO ENTRIES WILL BE ACCEPTED AFTER SEPTEMBER 28th, 2019.**
3. There is a \$35.00 fee that will be assessed to all returned checks. Any entry fees due, resulting from returned checks, plus the \$35.00 returned check fee MUST be paid by cash, cashier's check or money order prior to Day 1 of the Junior Livestock Show and Auction, if not paid in full the exhibitor will be disqualified from the show and auction for that specific year.
4. Refunds of any kind will be granted only upon approval of the Livestock Committee and must be made in writing to the Fair. Refunds will only be made due to sickness, accident, death, cancellation of a class, or lack of exhibit space. Refund requests must be made prior to the event. Per CDFA State rules refund requests involving health or soundness of an animal must be accompanied by a veterinarian's certificate. Refunds are subject to a reasonable processing fee in order to cover livestock administrative costs incurred for entry.
5. All exhibitors are required to purchase a fair entry pass for \$10.00 per exhibitor, which allows entry into the fair area of the facility for the duration of the entire fair. Passes will be available to family members only for a discounted price of \$10.00 each and must be purchased at the time exhibitor submits entry forms. No discount passes will be available at the time of fair.
6. Market Divisions are open to residents of Kern, San Bernardino, Los Angeles, and Inyo counties only. Breeding, rabbit and cavy divisions are open to the residents of the State of California.
7. Exhibitors are limited to showing two (2) Market animals per specie.
8. Entries will be limited to available space. Entries received after pen space is filled will be returned.
9. **Shavings for pens will be available for purchase at fair. Please request and purchase during check in.**
10. Original ownership/registration papers must be presented to the Livestock Office upon arrival and must be available at all times.
11. Exhibitors must present identification upon check-in. (Birth Certificate, School Id, Driver's license or CA ID are all acceptable)
12. Market animals must be owned and cared for by the exhibitor for 30 days for Rabbits, 60 days for Sheep, Swine, and Goats, and 120 days for beef, prior to the opening day of fair.
13. **Exhibitor Age Requirements:**
 - FFA: members may participate as members until the end of the calendar year following the year of graduation from high school.
 - 4-H: Members have age specific requirements.
 - **PRIMARY 4-H MEMBERS:** Must be 5 years old as of December 31, 2018. PRIMARY MEMBERS are not eligible to show large livestock at this fair; Primary members are allowed to show Rabbits, Cavies, and Nigerian Dwarf goats, and Pygmy Goats. The only Market animal primary members may show is a Rabbit Meat Pen.
 - **4-H: JUNIOR & SENIOR MEMBERS:** Must be 9 years old by December 31, 2018. Senior 4-H members may exhibit until the end of the calendar year in which they reach 19.
 - 4-H members showing large livestock must be at least 9 years old on December 31, 2018 and must be enrolled in the corresponding 4-H project through their local club by July 1st, 2019.
 - **GRANGE MEMBERS** are eligible to exhibit as members if they are at least 5 years of age as of January 1, 2019, until the end of the calendar year in which the member reaches age 19. (exception: Large animals). Grange members will show in the appropriate 4-H class.
 - **INDEPENDENT YOUTH EXHIBITORS** may enter any youth class. For Rabbit, Cavy and Nigerian Dwarf Goat classes the exhibitor must be at least 5 years old as of January 1, 2019. For all other livestock departments, exhibitor must be at least 9 years of age as of January 1, 2019. Independent youth may exhibit until the end of the calendar year in which they reach age 19. *****Independent Youth must submit proof of age.** *Independent Youth will show all livestock in the age appropriate 4-H class.
14. **Independent Exhibitors entering market animals MUST submit to the fair office proof of ownership, permanent tag, tattoo, tag # no later than 120 days prior to fair for beef, 60 days prior to fair for sheep, swine and goats, and 30 days prior for rabbits.**

LIVESTOCK DEPARTMENT LOCAL RULES

15. Exhibitors are expected to groom and care for their animals(s) when at the fair. They shall refrain from accepting active assistance from adults and non-exhibiting youth unless the junior exhibitor is actively engaged, and the assistance is only for instruction.
16. Any animals showing signs of disease, parasites, or fungus must be removed from the fairgrounds. The final decision to remove an animal will be the responsibility of the Livestock Chairman.
17. If any animal is receiving any type of medication you must inform the Livestock Chairman. Any Market animal receiving medication that the Livestock Chairman is not aware of will be disqualified from the Show & Auction.
18. All Sheep, Dairy Goats, Pygmy Goats and Market Goats must be identified with a USDA APHIS Scrapie tag. Scrapie tag number must be identified on the entry form.
19. Exhibitors are required to leave existing ear tags currently in the animal in the animal. **DO NOT REMOVE EAR TAGS.**
20. Premiums will only be paid on breeding animals, rabbits and showmanship. NO premiums will be paid for market classes.
21. All market animals will be weighed on the official Desert Empire Fair scale. No private scales are allowed on the fairgrounds. ****Animals may only be weighed once. Reweighs may be requested while the animal is still in the scale area. NO reweighs will be allowed once the animal has been removed from the scale area. Beef animals will be weighed upon arrival to the fairgrounds on Thursday at a local certified weight center, and must be accompanied by a Livestock Staff member. All Beef animals must check in by 12noon on Thursday and provide their Brand Inspection prior to unloading.**
22. **WEIGHT REQUIREMENTS:**

Market Beef:	1000-1450 lbs.
Market Calves:	130-300 lbs.
Market Lambs:	100-150 lbs.
Market Swine:	210-280 lbs.
Market Goats:	60-125 lbs.
23. Exhibitors must show their own animal. In the event the exhibitor is unable to exhibit their own animal, they must inform the Livestock Chairman who will make the final decision on whether the exhibitor may have someone else show their animal in the respective breeding or market class.
24. **Exhibitors must show their own animal in Showmanship classes. NO EXCEPTIONS.**
25. Breeding classes (Swine, Sheep, Dairy Goats, Pygmy Goats) may be cancelled or combined, at the discretion of the Livestock Chairman for the purposes of competition.
26. **Master Showmanship Judging:** Primary exhibitors who place 1st in any showmanship class will be eligible to compete by demonstrating their showmanship skills in small animal classes. Junior and Senior exhibitors who place 1st in any showmanship class will be eligible to compete by demonstrating their showmanship skills in various livestock classes.
27. **EXHIBITOR UNIFORMS** for the specific club affiliation will be worn for all classes at all times. **Exhibitors will be in their club specific uniform at any time they are in front of a judge.**
Fair dress code is as follows:
 - FFA UNIFORM:** White or Dark Blue Denim Jean trousers. No faded, frayed, or baggy trousers allowed. White dress shirts (long or short sleeved, no sleeveless or T-shirts). Official FFA necktie, scarf and jacket. If FFA jacket is not worn, the FFA emblem must be attached to the left front pocket of the shirt. No hats or headgear of any kind will be allowed while in the show ring.
 - 4-H UNIFORM:** White, green, or dark blue denim trousers allowed. (No frayed, faded or baggy trousers allowed). White dress shirts (short or long sleeved, no sleeveless or t-shirts). Official 4-H hat and tie or scarf must be worn in the show ring at all times.
 - GRANGE UNIFORM:** White or dark blue denim trousers; no faded, frayed or baggy trousers allowed. White dress shirt (short or long sleeved, no sleeveless or t-shirts), and official red Grange vest.
 - INDEPENDENT UNIFORM:** White or dark blue denim trousers, no faded, frayed or baggy trousers allowed. White dress shirt, long or short sleeved, no sleeveless or t-shirts.
28. All exhibitors are expected to show respect, courtesy, and cooperation with their peers, adults and fairgoers alike. No fighting or foul language will be tolerated. No water play of any type will be tolerated in the livestock area.
29. The use of inhumane showing and / or handling practices or devices such as striking animals to cause swelling, using electrical contrivances or other similar practices is strictly prohibited.
30. All exhibitors are required to keep their pens clean at all times for the duration of the fair. This includes your stall / supply area as well as the common aisles surrounding your pen.
 - *Please make this an enjoyable experience for our fairgoers/auction buyers by keeping all pens and walking areas free from animal defecation and show supplies.**

LIVESTOCK DEPARTMENT LOCAL RULES

AUCTION RULES:

1. Only Market Beef, Market Calves, Market Swine, Market Lambs, Market Goats and Rabbit Meat Pens may be sold at auction.
2. Exhibitors may only sell one animal of each species; Lamb, Beef, Goat, Swine and Rabbit.
*Livestock Chairman has the option to modify this rule depending on space availability.
3. Maximum weights are suggested guidelines for judging, and will not be considered in breaking classes. Should the judge consider an animal to be "Market Ready", regardless of weight, these animals will be eligible for the auction, but will only be paid to the top weight as follows:

Beef	1450 lbs.
Swine	280 lbs.
Goats	125 lbs.
Lambs	150 lbs.
Calves	300 lbs.
4. The Grand Champion and Reserve Grand Champion Market animals **MUST BE SOLD AT AUCTION, NO EXCEPTIONS...**
5. **Any animals that have sold through another Junior Livestock Auction are not eligible to sell at the Desert Empire Fair Auction. Exhibitors found violating this rule be excluded from all future fairs and auctions.**
6. **Any animal that is sold through the DEF Auction may not be donated back to the exhibitor, exhibitor's family/friends, or their affiliated club. Animals that are donated back to the exhibitors will be turned over to the Desert Empire Fair and offered for re-sale. Once the auctioneer has sold the exhibitors animals through the auction the animal is considered sold and the exhibitor SHALL NOT approach the buyer about donating or buying the animal back. Violation of this rule will result in the exhibitor only receiving re-sale price for their animal instead of their auction price with the remainder of the funds being donated to the DEF Jr. Livestock Committee.**
7. Exhibitors must be present to auction their animals. If an exhibitor is unable to be present, the Livestock Chairman must be notified and approve the reason for the exhibitor not being able to be present and sell their own animal during auction.
8. If an exhibitor has more than one species indicated in rule 2, they must declare to the livestock office which animal they intend to sell. If the Livestock office is not notified, the highest placing animal will be put into the auction.
9. **If the exhibitor chooses to 'scratch' their market animal from the auction (excluding Grand Champion and Reserve Grand Champion animals) they MUST notify the Livestock Office by Friday October 18th, 2019 at 6pm. NO ANIMALS WILL BE REMOVED FROM THE AUCTION AFTER THIS DEADLINE, NO EXCEPTIONS!!!**
10. The 53rd District boundaries are Kern / Los Angeles county line to the south, Inyo / Kern county line to the north, San Bernardino / Kern county line to the east and the Los Angeles aqua duct (located on the east side of the Sierra Nevada Mountains to the west.
11. **LIVESTOCK COMMISSIONS** are commissions paid to the DEF Jr. Livestock Show and Auction and will be collected for each animal sold through auction. Commissions are used to cover auction costs and other related costs.

MARKET BEEF:	\$60 per head
MARKET CALVES:	\$40 per head
MARKET SWINE:	\$40 per head
MARKET LAMB:	\$40 per head
MARKET GOAT:	\$40 per head
RABBIT MEAT PEN:	\$25 per pen
12. During the auction exhibitors are strictly prohibited from entering the livestock office for any reason, other than emergency. If you are interested in obtaining your buyer's name and / or address you can obtain that information on Sunday after the auction in the livestock office. If you have a gift to present to your buyer at the auction, please find a representative from the DEF Jr. Livestock Committee OUTSIDE and try to get the information from them. **DO NOT DISTURB THE OFFICE STAFF DURING THE AUCTION AT ALL.**
13. Exhibitors are responsible for the care, feeding, and pen cleaning of all animals sold through auction until the close of the show on Sunday at 2pm. Any exhibitor found leaving animals without water, feed, or care after the auction will be disqualified from future fairs and may be subject to a monetary penalty withdrawn from their auction proceeds.

LIVESTOCK DEPARTMENT LOCAL RULES

RABBIT SHOW RULES:

1. Show is open to all youth exhibitors, (5-19 yrs old)
2. Exhibitors MUST BE in their official club affiliated uniform in order to enter the show ring. No exceptions...
3. The show is a one day carrying cage show.
4. Rabbit/Cavy Show is open to all junior exhibitors in the 53rd District Agricultural Association. (Kern, Inyo, Los Angeles, and San Bernardino counties).
5. Your entry form indicates your acceptance of the DEF Jr. Livestock local rules, the CA State Rules for Fairs, and ARBA rules.
6. ***All Rabbits and cavies entered must be the bonafide property of the listed exhibitor. No Exceptions. Leasing or loaning of rabbits/cavies will not be permitted. Owners and breeders found in violation of this rule will forfeit their awards and will be prohibited from showing at future fairs.**
7. Rules, definitions and judging procedures as prescribed in the latest edition of the American Rabbit Breeders Association, Inc. (ARBA) shall apply to all district and county fair rabbit/cavy shows, providing they do not conflict with any rules and regulations prescribed by the Dept. of Food & Agriculture, State of CA rules for fairs.
8. Animals are entered at the owner's risk. Every precaution will be taken to safeguard the animals, however show personnel, judges and the Desert Empire Fair are in no way responsible for the injury, death or loss of an animal.
9. DEF Jr. Livestock Chairman reserves the right to add or change judges at any time.
10. Rabbits must have a legible tattoo in the left ear. Tattoo # must be included on the entry form. Rabbits without legible tattoos will be disqualified. Cavies must have a permanent ear tag, and must be included on the entry form. Any duplication of ear markings by one exhibitor in the same breed and class will not be allowed.
11. Rabbits/Cavies may not be removed from the fairgrounds on the day of the show without permission of the Livestock Chairman.
12. Any unhealthy rabbits/cavies must be removed immediately from the show area and the Livestock Office must be notified.
13. Please be considerate when setting up your space and tables. DEF has limited space, and we need to accommodate all exhibitors. Please keep all walkways and aisles clear for safety reasons.
14. Exhibitors MUST clean their area prior to leaving. Exhibitors found not leaving the show area clean and free of debris may lose their premiums or be disqualified from future shows.
15. According to ARBA rules, an exhibitor cannot make any comments which may identify ownership of a rabbit/cavy, nor may they attempt to influence the judging of an animal. Anyone doing so may have their entry disqualified, with all entry fees being forfeited.
16. Parents and club leaders are prohibited from entering the show ring during the rabbit show and / or at any time during judging. The only person(s) allowed in the show ring are the exhibitors, the judge, the official ARBA show secretary/clerk and the Desert Empire Fair Jr. Livestock Show staff.
17. Exhibitors are responsible for making sure their rabbits get to and from the judging tables. Be careful not to miss your class. There will be no re-judging for missed classes.
18. NO ANIMALS UNDER 6 WEEKS OF AGE ALLOWED IN THE SHOW AREA.
19. All legs will be mailed; all awards (trophies, ribbons, etc.) must be picked up in the Livestock Show office the day of the show.
20. Any issue that arises that cannot be resolved by reference to these rules, the official ARBA rules or CA State rules, will be decided by the DEF Jr. Livestock Show & Auction Committee.
21. Ear changes allowed at the judging table for the same sex and color at no charge for the first 2 rabbits or cavies. Ear changes for subsequent animals will be charged \$3.00 per rabbit / cavy per show. Class, Variety, and/or sex changes will not be allowed.
22. It is the exhibitor's responsibility to complete changes and PAY prior to the breed being called to the judging table. Please take care of this in the Livestock Office in advance of the class.
23. Any unauthorized changes that occur, will be considered NO SHOWS when secretary completes final paperwork and will not receive a refund.
24. **RABBIT MEAT PEN RULES:**
 - a.) Exhibitor is limited to sell only one meat pen of (3) rabbits. The exception is if the exhibitor wins Grand Champion and Reserve Grand Champion, then they may sell both pens of meat rabbits at the auction.
 - b.) Meat pen must be three rabbits, all the same breed and variety, minimum weight 3.5 lbs. and maximum weight of 5.5 lbs.
 - c.) Rabbits must not be over 70 days old.
 - d.) Rabbits will be weighed in the presence of the judge and weigh master.
 - e.) Extra animals in the cage are not allowed.
 - f.) Rabbits must be owned and cared for by the exhibitor for 30 days prior to the day of show. Proof of ownership must be available.
 - g.) Rabbit judge reserves the right to question the exhibitor to determine if they independently raised and cared for their meat pen.
Exhibitors may be disqualified if judge deems they did not raise or care for their meat pen, with all entry fees forfeited.

LIVESTOCK CATALOG

BEEF – Dept. 1

DIVISION 400 – MARKET BEEF

Entry Fee: \$10.00 per head per class

Class 1: Market Beef (1000-1450 lbs.)

- Market Beef must be individually owned by the exhibitor for at least 120 days prior to the opening day of fair.
- Exhibitors are limited to two (2) beef entries per exhibitor.
- Market Beef must be weighed by an official weigh master BEFORE coming to the fairgrounds. The official weight slip along with a USDA Brand Inspection must be presented to the Livestock Office upon arrival.
- Market Ready steers are projected to have sufficient fat deposition to meet the marbling specifications for USDA Prime, Choice or Select + Quality Grades.
- Not Market Ready steers are those lacking evidence of sufficient fat deposition to produce a desirable consumer product. Steers projected to grade USDA Select or lower.

DIVISION 405 – MARKET CALVES

Entry Fee: \$10.00 per head per class

Class 1: Market Calves (130-300 lbs.)

- Calves must be under 90 days of age.
- Calves must be 50% dairy.
- Calves must have been fed on milk or milk replacer.
- Calves must have been owned by the exhibitor for at least 60 days prior to opening day of fair.
- Grade Group 1 – Animals are smooth, deep, thick, and compact; the udder or scrotum shows a marked fullness. They must have a youthful appearance and be in good condition.
- Grade Group 2 – Animals must possess a moderately high degree of the higher quality grade characteristics. They will carry less finish, show more bone, and have less uniformity.
- Grade Group 3 – Animals lack finish, are rather leggy and hippy, and/or are rough in the shoulder and light in the round.

DIVISION 410 – BEEF SHOWMANSHIP

Entry Fee: \$10.00 per head per class

PREMIUMS OFFERED:

- 1st place \$8.00
- 2nd place \$7.00
- 3rd place \$6.00
- 4th place \$5.00
- 5th place \$4.00

Class 1: Junior 9-13 years old (as of January 1)

Class 2: Senior 14-19 years old (as of January 1)

- Open to Market Beef and Market Calf Exhibitors.
- Only animals entered and shown in individual market classes are eligible.
- Age of exhibitor is determined by their age as of January 1st of the current calendar year.



LIVESTOCK CATALOG

SWINE – Dept. 2

DIVISION 420 – MARKET SWINE

Entry Fee: \$10.00 per head per class

Class 1: Market Swine (210-280 lbs.)

- Exhibitors may only exhibit two (2) Market Swine.
- Swine must be individually owned by the exhibitor for at least 60 days prior to opening day of fair.
- Swine not making minimum market weights may show in feeder classes, but may not be auctioned.
- Market Ready: US No.1 and No. 2 hogs of average or greater confirmation that is acceptable in leanness, muscularity and production traits.
- Not Market Ready: Any hog of below average conformation including US No. 3, No. 4 and utility grade hogs.

DIVISION 421 – FEEDER SWINE

Entry Fee: \$10.00 per head per class

Class 1: Feeder Swine (209lbs. and under)

DIVISION 425 – BREEDING SWINE

Entry Fee: \$10.00 per head per class

Class 1: Junior & Senior Yearling
(born prior to 6/20 of current year)

Class 2: Fall Gilt
(born July 1 – Dec. 31s of current year)

Class 3: Spring Gilt
(born after January 1* of current year)

- Open to Junior exhibitors who reside in the state of California.

DIVISION 430 – SWINE SHOWMANSHIP

Entry Fee: \$10.00 per head per class

PREMIUMS OFFERED:

- 1st place \$8.00
- 2nd place \$7.00
- 3rd place \$6.00
- 4th place \$5.00
- 5th place \$4.00

Class 1: Novice Jr. 9-13 yrs. old (as of January 1)
(1st & 2nd year exhibitors only)

Class 2: Junior 9-13 years old (as of January 1)

Class 3: Senior 14-19 years old (as of January 1)

- Only animals entered and shown in individual classes are eligible.
- Age of exhibitor is determined by their age as of January 1st of the current calendar year.
- Novice Jr. class is only for youth that have one or two years of experience exhibiting ANY species. For example if this is the first year that the exhibitor will show pigs, however he/she has shown lambs, goats or any combination of other species for 3 years; the exhibitor is ineligible to show in the novice class and should enter the regular Jr. class.



LIVESTOCK CATALOG

SHEEP – Dept. 3

DIVISION 440 – MARKET LAMBS

Entry Fee: \$10.00 per head per class

Class 1: Market Lambs (100-150 lbs.)

- Exhibitors may only exhibit two (2) Market Lambs.
- Market lambs must be individually owned by the exhibitor at least 60 days prior to opening day of fair.
- All sheep must have official Scrapie tags
- Market lambs **MAY NOT** be shown in breeding classes.
- Lambs must be showing lamb teeth.
- Lambs not making minimum weight requirement will be eligible to be shown in the Feeder Lamb class.
- Market Ready: USDA Prime or Choice quality grade with 12th rib back fat range of .16-.35. Average or greater conformation and cut ability.
- Not Market Ready: Good or lower quality grade with 12th rib back fat range of < .16 or > .35. Under finished lambs grading USDA Good or lower, below average conformation or cut ability.

DIVISION 445 – FEEDER LAMBS

Entry Fee: \$10.00 per head per class

Class 1: Feeder Lambs (99 lbs. and under)

DIVISION 450 – BREEDING SHEEP

Entry Fee: \$10.00 per head per class

- Class 1: Yearling Ewe**
(born prior to January 1st of current year)
- Class 2: Ewe Lamb**
(born after January 1st of current year)
- Class 3: Ram Lamb**
(born after January 1st of current year)

DIVISION 455 – SHEEP SHOWMANSHIP

Entry Fee: \$10.00 per head per class

PREMIUMS OFFERED:

- 1st place \$8.00
- 2nd place \$7.00
- 3rd place \$6.00
- 4th place \$5.00
- 5th place \$4.00

Class 1: Novice Jr. 9-13 yrs. old (as of January 1)
(1st & 2nd year exhibitors only)

Class 2: Junior 9-13 years old (as of January 1)

Class 3: Senior 14-19 years old (as of January 1)

- Only animals entered and shown in individual classes are eligible.
- Age of exhibitor is determined by their age as of January 1st of the current calendar year.
- Novice Jr. class is only for youth that have one or two years of experience exhibiting ANY species. For example if this is the first year that the exhibitor will show lambs, however he/she has shown pigs, goats or any combination of species for 3 years; the exhibitor is ineligible to show in the novice class and should enter the regular Jr. class.



LIVESTOCK CATALOG

MARKET GOAT – Dept. 4

DIVISION 460 – MARKET GOATS

Entry Fee: \$10.00 per head per class

Class 1: Market Goats (60-125 lbs.)

- Market goats must be individually owned by the exhibitor for at least 60 days prior to the opening day of fair.
- Goats must be dehorned.
- Male goats must be castrated.
- Goats must have official Scrapie tag.
- Market Ready: USDA Prime of Choice quality for 12th rib back fat range.
 - .08 - .12 is most desirable
 - .13 - .22 is acceptable
 - Average or greater conformation and cut ability.
- Not Market Ready: Good or lower quality with 12th rib back fat range < .08 or > .22. Under finished goats grading USDA good or lower, below average conformation and / or cut ability.

DIVISION 459 – PROSPECT MARKET GOAT

Entry Fee: \$10.00 per head per class

Class 1: Prospect Goat (under 60 lbs.)

- Market goats must be individually owned by the exhibitor for at least 60 days prior to the opening day of fair.
- Goats must be dehorned.
- Male goats must be castrated.
- This class does not sell at auction.



DIVISION 461 – MARKET GOAT SHOWMANSHIP

Entry Fee: \$10.00 per head per class

PREMIUMS OFFERED:

- 1st place \$8.00
- 2nd place \$7.00
- 3rd place \$6.00
- 4th place \$5.00
- 5th place \$4.00

Class 1: Junior 9-13 years old (as of January 1)

Class 2: Senior 14-19 years old (as of January 1)

- Only animals entered and shown in individual market classes are eligible.
- Age of exhibitor is determined by their age as of January 1st of the current calendar year.

BOER, DOES – Dept. 4

DIVISION 462 – BREEDING DOES

Entry Fee: \$10.00 per head per class

PREMIUMS OFFERED:

- 1st place \$8.00
- 2nd place \$6.00
- 3rd place \$4.00

Class 1: Doe, Spring (under 1 year old)

Class 2: Doe, Yearling (1-2 years old)

Class 3: Doe, Aged (over 2 years old)

- Classes may be combined or split at the discretion of the Livestock Chairman.
- Boer goats must be owned by the exhibitor for 60 days prior to the opening day of the fair.
- All Boer goats must have official Scrapie tag or tattoo.

LIVESTOCK CATALOG

DAIRY GOATS – Dept. 5

DIVISION 463 – DAIRY GOATS

Entry Fee: \$10.00 per head per class

PREMIUMS OFFERED:

- 1st place \$8.00
- 2nd place \$6.00
- 3rd place \$4.00

Class 1: KIDS (born after Jan 1st of current year)
Class 2: Dry Yearling, 1 year old, not in milk
Class 3: Yearling, 1 year old, in milk
Class 4: Doe, of any age

- All breeds shown together, this is not a sanctioned show.
- Classes may be added at the discretion of the Livestock Chairman.
- All goats must have Scrapie tags.
- Goats must be owned by the exhibitor for at least 60 days prior to opening day of the fair.

DIVISION 464 – DAIRY GOAT SHOWMANSHIP

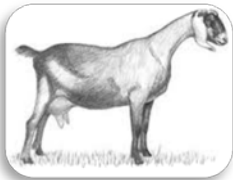
Entry Fee: \$10.00 per head per class

PREMIUMS OFFERED:

- 1st place \$8.00
- 2nd place \$7.00
- 3rd place \$6.00
- 4th place \$5.00
- 5th place \$4.00

Class 1: Junior 9-13 years old (as of January 1)
Class 2: Senior 14-19 years old (as of January 1)

- Only animals entered and shown in individual classes are eligible.
- Age of exhibitor is determined by their age as of January 1st of the current calendar year.



PYGMY GOATS – Dept. 6

DIVISION 465 – PYGMY GOATS

Entry Fee: \$10.00 per head per class

PREMIUMS OFFERED:

- 1st place \$8.00
- 2nd place \$6.00
- 3rd place \$4.00

Class 1: KIDS (under 1 year of age)
Class 2: Doe, Yearling
Class 3: Doe, Aged
Class 4: Wether, of any age

- Classes may be combined or split at the discretion of the Livestock Chairman.
- Pygmy goats must be owned by the exhibitor for 60 days prior to the opening day of the fair.
- All Pygmy goats must have official Scrapie tag or tattoo.

DIVISION 466 – PYGMY GOAT SHOWMANSHIP

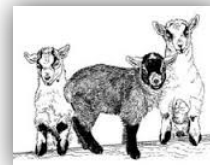
Entry Fee: \$10.00 per head per class

PREMIUMS OFFERED:

- 1st place \$8.00
- 2nd place \$7.00
- 3rd place \$6.00
- 4th place \$5.00
- 5th place \$4.00

Class 1: Primary 5-8 years old (as of January 1)
Class 2: Junior 9-13 years old (as of January 1)
Class 3: Senior 14-19 years old (as of January 1)

- Only animals entered and shown in individual classes are eligible.
- Age of exhibitor is determined by their age as of January 1st of the current calendar year.



LIVESTOCK CATALOG

NIGERIAN DWARF GOATS – Dept. 7

DIVISION 467 – NIGERIAN DWARF GOATS

Entry Fee: \$10.00 per head per class

PREMIUMS OFFERED:

- 1st place \$8.00
- 2nd place \$6.00
- 3rd place \$4.00

- Class 1: KIDS (born after Jan 1st of current year)
Class 2: Dry Yearling, 1 year old, not in milk
Class 3: Yearling, 1 year old, in milk
Class 4: Doe, of any age
Class 5: Wether, of any age

- This is not a sanctioned show.
- Classes may be combined or split at the discretion of the Livestock Chairman.
- Nigerian Dwarf goats must be owned by the exhibitor for 60 days prior to the opening day of the fair.
- All goats must have official Scrapie tag.



DIVISION 468 – NIGERIAN GOAT SHOWMANSHIP

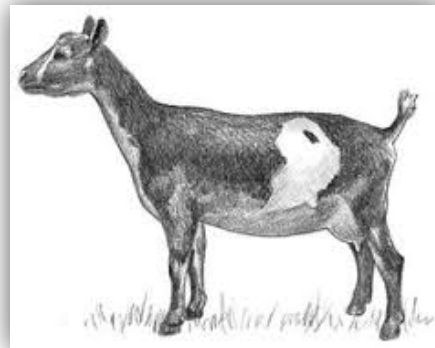
Entry Fee: \$10.00 per head per class

PREMIUMS OFFERED:

- 1st place \$8.00
- 2nd place \$7.00
- 3rd place \$6.00
- 4th place \$5.00
- 5th place \$4.00

- Class 1: Primary 5-8 years old (as of January 1)
Class 2: Junior 9-13 years old (as of January 1)
Class 3: Senior 14-19 years old (as of January 1)

- Only animals entered and shown in individual classes are eligible.
- Age of exhibitor is determined by their age as of January 1st of the current calendar year.



LIVESTOCK CATALOG

RABBITS - Dept. 8

DIVISION 480 -483 HEAVY WEIGHT BREEDS

Entry Fee: \$6.00 per head per class

PREMIUMS OFFERED:

- 1st place \$3.00
- 2nd place \$2.00
- 3rd place \$1.00

DIVISION 480	CALIFORNIAN
DIVISION 481	NEW ZEALAND
DIVISION 482	SATIN
DIVISION 483	OTHER HEAVYWEIGHTS

Class 1:	Senior Buck, 8 months and older
Class 2:	Senior Doe, 8 months and older
Class 3:	Intermediate Buck, 6-7 months old
Class 4:	Intermediate Doe, 6-7 months old
Class 5:	Junior Buck, under 6 months old
Class 6:	Junior Doe, under 6 months old

DIVISION 484 -488 LIGHT WEIGHT BREEDS

Entry Fee: \$6.00 per head per class

PREMIUMS OFFERED:

- 1st place \$3.00
- 2nd place \$2.00
- 3rd place \$1.00

DIVISION 484	DUTCH
DIVISION 485	HOLLAND LOP
DIVISION 486	MINI REX
DIVISION 488	OTHER LIGHTWEIGHTS

Class 1:	Senior Buck, 6 months and older
Class 2:	Senior Doe, 6 months and older
Class 3:	Junior Buck, under 6 months old
Class 4:	Junior Doe, under 6 months old



DIVISION 489 - RABBIT MEAT PEN

Entry Fee: \$10.00 per head per class

Class 1: 3 rabbits, 3.5-5.5 lbs.
(not over 70 days old / 10 weeks)

- Rabbits entered in this class may not be entered in any other class.
- Only Market ready met pens may sell at auction.
- Must be of same breed and color
- Must be owned by the exhibitor at least 30 days prior to opening day of fair.
- No cash awards or premiums.
- Special Awards: Grand Champion and Reserve Grand Champion Meat Pen.

DIVISION 490 - BACKYARD BUNNIES

Entry Fee: \$6.00 per head per class

Class 1:	Senior Buck, 6 months and older
Class 2:	Senior Doe, 6 months and older
Class 3:	Junior Buck, under 6 months old
Class 4:	Junior Doe, under 6 months old

- Entries in this division are rabbits that are not purebred or that have obvious disqualifications.
- Rabbits in this division are not eligible for Grand Champion.

DIVISION 491 - RABBIT SHOWMANSHIP

Entry Fee: \$6.00 per head per class

PREMIUMS OFFERED:

- 1st place \$3.00
- 2nd place \$2.00
- 3rd place \$1.00

Class 1:	Primary 5-8 years old (as of January 1)
Class 2:	Junior 9-13 years old (as of January 1)
Class 3:	Senior 14-19 years old (as of January 1)

- Only rabbits entered and shown in individual classes are eligible.
- Rabbits must be owned by the exhibitor
- Age of exhibitor is determined by their age as of January 1st of the current calendar year.

LIVESTOCK CATALOG

CAVIES – Dept. 8

DIVISION 492 - AMERICAN

Entry Fee: \$6.00 per head per class

PREMIUMS OFFERED:

- 1st place \$3.00
- 2nd place \$2.00
- 3rd place \$1.00

- Class 1:** Senior Boar, over 6 months old
(weighing over 32 ounces)
- Class 2:** Senior Sow, over 6 months old
(weighing over 32 ounces)
- Class 3:** Intermediate Boar, up to 6 months old
(weighing over 22 oz. up to 32 oz.)
- Class 4:** Intermediate Sow, up to 6 months old
(weighing over 22 oz. up to 32 oz.)
- Class 5:** Junior Boar, up to 4 months old
(weighing over 12 oz. up to 22 oz.)
- Class 6:** Junior Sow, up to 4 months old
(weighing over 12 oz. up to 22 oz.)

DIVISION 493 – ALL OTHER STANDARD RECOGNIZED BREEDS

Entry Fee: \$6.00 per head per class

PREMIUMS OFFERED:

- 1st place \$3.00
- 2nd place \$2.00
- 3rd place \$1.00

- Class 1:** Senior Boar, over 6 months old
(weighing over 32 ounces)
- Class 2:** Senior Sow, over 6 months old
(weighing over 32 ounces)
- Class 3:** Intermediate Boar, up to 6 months old
(weighing over 22 oz. up to 32 oz.)
- Class 4:** Intermediate Sow, up to 6 months old
(weighing over 22 oz. up to 32 oz.)
- Class 5:** Junior Boar, up to 4 months old
(weighing over 12 oz. up to 22 oz.)
- Class 6:** Junior Sow, up to 4 months old
(weighing over 12 oz. up to 22 oz.)

DIVISION 494 – CAVY SHOWMANSHIP

Entry Fee: \$6.00 per head per class

PREMIUMS OFFERED:

- 1st place \$3.00
- 2nd place \$2.00
- 3rd place \$1.00

- Class 1:** Primary 5-8 years old (as of January 1)
- Class 2:** Junior 9-13 years old (as of January 1)
- Class 3:** Senior 14-19 years old (as of January 1)
- Only Cavies entered and shown in individual classes are eligible.
 - Cavies must be owned by the exhibitor
 - Age of exhibitor is determined by their age as of January 1st of the current calendar year.



LIVESTOCK CATALOG

MASTER SHOWMANSHIP

DIVISION 510 - MASTER SHOWMANSHIP

*****DO NOT enter this class on your entry form. You have to qualify for this class. If you enter and pay for this class your entry fees will not be returned to you.*****

Entry Fee: NO ENTRY FEES

Entry Rules: 1st place showmanship exhibitors are automatically enrolled in Master Showmanship classes. If you do not wish to enter Master Showmanship, please notify the Livestock Office asap.

Premiums: NO PREMIUMS PAID

Awards: Ribbons (1st - 5th), Buckle for top winner

- Class 1: Primary 5-8 years old (as of January 1)**
- Primary Master Showmanship Buckle will be awarded to highest ranking points for showing various small animal species.
 - Entry is based on points earned in Showmanship for the following divisions:
 - Nigerian Dwarf Goats
 - Pygmy Goats
 - Rabbits
 - Cavies

Class 2:

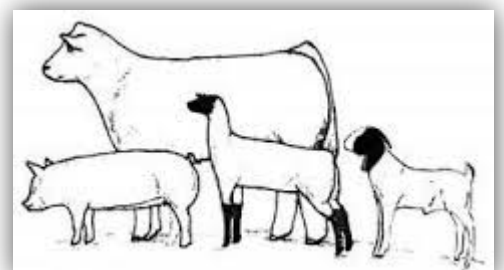
Junior 9-13 years old (as of January 1)

- Junior Master Showmanship buckle will be awarded to highest ranking points for showing various large animal species.
- Entry is based on placing first in eligible large animal Showmanship classes.
- Species that could possibly be selected & shown by exhibitors:
 - Swine
 - Sheep
 - Dairy Goats
 - Market Goats
 - Market Beef (if available)

Class 3:

Senior 14-19 years old (as of January 1)

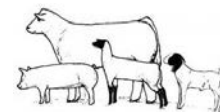
- Senior Master Showmanship buckle will be awarded to highest ranking points for showing various large animal species.
- Entry is based on placing first in eligible large animal Showmanship classes.
- Species that could possibly be selected & shown by exhibitors:
 - Swine
 - Sheep
 - Dairy Goats
 - Market Goats
 - Market Beef (if available)





LIVESTOCK ENTRY FORM

MAIL TO:
DEF-JLA c/o Curtis Moore
P.O. Box 225 Inyokern, CA 93527
(760) 382-4585 / 382-4575
email: def_juniorlivestock@yahoo.com



Exhibitor #: _____
(for office use only)

EAR TAG # TATTOO # SCRAPIE TAG #	DEPARTMENT	DIVISION	CLASS	DIVISION / CLASS ENTRY DESCRIPTION (Market, Class, Showmanship, Division, Breed, etc.)	BREEDER	ANIMAL D.O.B.	ENTRY FEE

Additional form with only the division / class entries completed may be stapled to this form if needed

MAKE CHECKS PAYABLE TO: DEF-JLA

ENTRIES CLOSE ON SEPTEMBER 14, 2019

ALL ENTRIES POSTMARKED AFTER THIS DATE ARE CONSIDERED LATE

\$20 FEE MUST BE INCLUDED FOR ALL LATE ENTRIES, NO EXCEPTIONS

ABSOLUTELY NO ENTRIES ACCEPTED AFTER SEPTEMBER 28, 2019 (postmarked by 9/28/19)

YQCA CERTIFICATE MUST ACCOMPANY THIS ENTRY FORM IN ORDER TO PARTICIPATE IN THIS FAIR !!!

TOTAL ENTRY FEES

EXHIBITOR TAG FEE (\$1.00 per exhibitor) \$ 1.00

INDEPENDENT EXHIBITOR FEE (\$20.00)

MANDATORY EXHIBITOR FAIR ENTRY PASS (\$10.00 per exhibitor) \$ 10.00

PARENT/FAMILY FAIR ENTRY PASSES (\$10.00 each)

LATE ENTRY FEE (if applicable) \$20.00

TOTAL FEES

EXHIBITOR NAME: _____ PARENT NAME: _____

EXHIBITOR AGE: (as of Jan 1, 2019): _____ Date of Birth: _____ PHONE #: _____

ADDRESS: _____ EMAIL: _____

CITY: _____ CLUB NAME: _____ YQCA Certificate #: _____

STATE: _____ ZIP: _____ EXHIBITOR SIGNATURE: _____

MUST BE SIGNED BY EXHIBITOR'S PARENT OR GUARDIAN and their 4-H COMMUNITY LEADER, FFA ADVISOR, GRANGE LEADER or 4-H OFFICE.

By signing and submitting an entry form the exhibitor and their agents, parents and leaders acknowledge and agree that they:

- a. Have read and understand the CDFA 2019 State Rules for California Fairs and the 2019 DEF Livestock Local Rules. (both documents are available on the Desert Empire Fair website)
- b. Agree to abide by them; c. Certify that all information on the entry form is true and accurate; d. Agree to comply with the fair's decision regarding any alleged violation of the state or local rules.
- e. Certify that this entry is the project of the exhibitor, owned solely by the exhibitor, and is eligible to be shown in accordance with the rules and regulations of this show.
- f. The exhibitor and their parent/leader/advisor attest that the exhibitor has completed Youth for the Quality Care of Animals (YQCA.com) training and has a current certificate attached with this entry form.
- g. The exhibitor agrees to defend, indemnify and hold harmless the fair, the county and the State of California from and against any liability, claim, loss or expense (including reasonable attorneys' fees) arising out of any injury or damage, which is caused by, arises from or is in any way connected with participation in the program or event, excepting only that caused by the sole active negligence of the Fair. The Fair Management shall not be responsible for accidents or losses that may occur to any of the exhibitors or exhibits at the Fair. The exhibitor (or parent or guardian of a minor) is responsible for any injury or damage resulting from the exhibitor's participation in the program or event. This includes any injury to others or to the exhibitor or to the exhibitor's property.

LEADER'S / ADVISOR'S PRINTED NAME: _____ PHONE #: _____

LEADER'S / ADVISOR'S SIGNATURE: _____ CLUB NAME: _____

PARENT or GUARDIAN SIGNATURE: _____ DATE: _____

FOR OFFICE USE ONLY:

Date Received: _____ Amount Received: _____ Cash / Check (circle one) CK# _____ Received by: _____



RABBIT / CAVY ENTRY FORM

MAIL TO:
 DEF-JLA c/o Curtis Moore
 P.O. Box 225 Inyokern, CA 93527
 (760) 382-4585 / 382-4575
 email: def_juniorlivestock@yahoo.com



Exhibitor #: _____
 (for office use only)

RABBIT ENTRIES (Dept 8)					Exhibitor ARBA #		
EAR TATTOO	DIVISION	CLASS #	BREED	VARIETY / COLOR	CLASS	SEX	ENTRY FEE
					Jr. / Intr. / Sr.	Buck / Doe	
					Jr. / Intr. / Sr.	Buck / Doe	
					Jr. / Intr. / Sr.	Buck / Doe	
					Jr. / Intr. / Sr.	Buck / Doe	
					Jr. / Intr. / Sr.	Buck / Doe	
					Jr. / Intr. / Sr.	Buck / Doe	

CAVY ENTRIES (Dept 8)					CLASS	SEX	ENTRY FEE
EAR TATTOO	DIVISION	CLASS #	BREED	VARIETY / COLOR	CLASS	SEX	ENTRY FEE
					Jr. / Intr. / Sr.	Boar / Sow	
					Jr. / Intr. / Sr.	Boar / Sow	
					Jr. / Intr. / Sr.	Boar / Sow	

RABBIT MEAT PEN (Dept 8)				Ear Tattoo #1	Ear Tattoo #2	Ear Tattoo #3	ENTRY FEE
DIVISION	CLASS #	DESCRIPTION:	BREED	Ear Tattoo #1	Ear Tattoo #2	Ear Tattoo #3	ENTRY FEE
		MEAT PEN					
		MEAT PEN					

Additional form with only the division / class entries completed may be stapled to this form if needed

MAKE CHECKS PAYABLE TO: DEF-JLA

ENTRIES CLOSE ON SEPTEMBER 14, 2019

ALL ENTRIES POSTMARKED AFTER THIS DATE ARE CONSIDERED LATE

\$20 FEE MUST BE INCLUDED FOR ALL LATE ENTRIES, NO EXCEPTIONS

ABSOLUTELY NO ENTRIES ACCEPTED AFTER SEPTEMBER 28, 2019 (postmarked by 9/28/19)

YQCA CERTIFICATE MUST ACCOMPANY THIS ENTRY FORM IN ORDER TO PARTICIPATE IN THIS FAIR !!!

TOTAL ENTRY FEES		
EXHIBITOR TAG FEE (\$1.00 per exhibitor)	\$	1.00
MANDATORY EXHIBITOR FAIR ENTRY PASS (\$10.00 per exhibitor)	\$	10.00
PARENT/FAMILY FAIR ENTRY PASSES (\$10.00 each)		
LATE ENTRY FEE (if applicable) \$20.00		
TOTAL FEES		

EXHIBITOR NAME: _____ PARENT NAME: _____
 EXHIBITOR AGE: (as of Jan 1, 2019): _____ Date of Birth: _____ PHONE #: _____
 ADDRESS: _____ EMAIL: _____
 CITY: _____ CLUB NAME: _____ YQCA Certificate #: _____
 STATE: _____ ZIP: _____ EXHIBITOR SIGNATURE: _____

MUST BE SIGNED BY EXHIBITOR'S PARENT OR GUARDIAN and their 4-H COMMUNITY LEADER, FFA ADVISOR, GRANGE LEADER or 4-H OFFICE.

By signing and submitting an entry form the exhibitor and their agents, parents and leaders acknowledge and agree that they:

- Have read and understand the CDFA 2019 State Rules for California Fairs and the 2019 DEF Livestock Local Rules. (both documents are available on the Desert Empire Fair website)
- Agree to abide by them; c. Certify that all information on the entry form is true and accurate; d. Agree to comply with the fair's decision regarding any alleged violation of the state or local rules.
- Certify that this entry is the project of the exhibitor, owned solely by the exhibitor, and is eligible to be shown in accordance with the rules and regulations of this show.
- The exhibitor and their parent/leader/advisor attest that the exhibitor has completed Youth for the Quality Care of Animals (YQCA.com) training and has a current certificate attached with this entry form.
- The exhibitor agrees to defend, indemnify and hold harmless the fair, the county and the State of California from and against any liability, claim, loss or expense (including reasonable attorneys' fees) arising out of any injury or damage, which is caused by, arises from or is in any way connected with participation in the program or event, excepting only that caused by the sole active negligence of the Fair. The Fair Management shall not be responsible for accidents or losses that may occur to any of the exhibitors or exhibits at the Fair. The exhibitor (or parent or guardian of a minor) is responsible for any injury or damage resulting from the exhibitor's participation in the program or event. This includes any injury to others or to the exhibitor or to the exhibitor's property.

LEADER'S / ADVISOR'S PRINTED NAME: _____ PHONE #: _____

LEADER'S / ADVISOR'S SIGNATURE: _____ CLUB NAME: _____

PARENT or GUARDIAN SIGNATURE: _____ DATE: _____

FOR OFFICE USE ONLY:

Date Received: _____ Amount Received: _____ Cash / Check (circle one) CK# _____ Rcvd By: _____