

THE  
Big Fresno Fair  
2021  
LIVESTOCK  
AND  
FUR & FEATHERS  
EXHIBITS HANDBOOK  
CONTENTS

<u>INDEX</u>	<u>PAGE</u>
NEW FOR 2021 INFORMATION	
2021 State Rules	<a href="http://www.cdfa.ca.gov/fe">www.cdfa.ca.gov/fe</a>
2021 Local Rules/ REGULATIONS	9
MARKET AND FEE SCHEDULE	7
CALENDARS/SCHEDULES	4
UNIFORM/DRESS CODE	8
WRISTBAND/PARKING/RV INFORMATION	9
CHAMPIONS OF EXCELLENCE	14
ACTIVITIES/BARN OLYMPICS	15-16
JUNIOR LIVESTOCK DEPARTMENT	17-18
DOGS	47-48
JUNIOR FUR & FEATHERS	40
APPLICATIONS/FORMS	64
STAGING MAP	6
POULTRY INSPECTION MAP WEEK 1	40

FOR ALL FORMS, SCHOLARSHIPS, AND INFORMATION PLEASE VISIT  
OUR WEB SITE AT: [www.FresnoFair.com](http://www.FresnoFair.com)

ALL ENTRIES, PICTURES, FORMS, MUST BE SUBMITTED ON LINE!!



UNDER THE DIRECTION OF THE

**21ST DISTRICT AGRICULTURAL ASSOCIATION**  
**OF THE STATE OF CALIFORNIA**

**BOARD OF DIRECTORS**

President: Jerry Pacheco  
Vice President: Chuck Riojas  
Sec/Treasure Terry Gonsalves  
Linda Mae Balakian Hunsucker  
Gary Cahil  
Frank Flores  
Annalisa Perea  
Larry Salinas  
Larry Serpa

**STATE OF CALIFORNIA OFFICIALS**

Gavin Newsom-Governor  
Karen Ross - Secretary, Dept. of Food & Agriculture  
Andreas Borgeas - 8th District State Senator  
Anna Caballero - 12<sup>th</sup> District State Senator  
Melissa Hurtado - 14<sup>th</sup> District State Senator

**CONGRESSIONAL DISTRICTS**

Jim Costa	16 <sup>th</sup> District
Tom McClintock	4 <sup>th</sup> District
Devin Nunes	22 <sup>nd</sup> District
David Valadao	21 <sup>st</sup> District

**COUNTY BOARD OF SUPERVISORS**

Chairman – Steve Brandon  
Vice Chair –Brian Pacheco  
Nathan Magsig  
Buddy Mendes  
Sal Quintero

**THE BIG FRESNO FAIR MANAGEMENT**

Deputy Manager II                      Stacy Rianda/Lauri King

**DEPARTMENT SUPERINTENDENTS**

Livestock/Fur & Feathers	Terri O'Leary-Collins
Agriculture Building	John Hoyt
Fine Arts & Photography	Vishinna Turner
Floriculture	Jennifer Waite
Gem & Minerals	Richard English
Home Arts	Kathy Currin
Junior Exhibits	Anne Beach

# What's New 2021

1. College Division Livestock Show-Canceled
2. Beaus and Belles Beef showmanship Classes
3. Social Distancing- All show rings will be adhering to a social distancing. Each exhibitor will be allowed a specific number of guests for the live shows. All guest are allowed to sit in the bleacher section only.
4. Barnyard Olympics-Canceled
5. Buyers BBQ – Canceled
6. Super Heavy Weight hog show, hogs will not be eligible for sale but will show on Thursday after showmanship classes.
7. Open Goat Show – Canceled
8. Animals will be shown “Blow and Show “for showmanship and may be fitted for market classes. Wet towels, ice, cool brace, or other such products will not be allowed at any time. Blankets/tubes, may be used, but may not be used at ringside unless weather requires blanketing for warmth.
9. Dairy Cattle will show on **THURSDAY, OCTOBER 7, 2021 8 AM** , **DAIRY CATTLE SHOWMANSHIP** - FFA /Independent, followed by, 4-H /Independent, followed by Registered Heifer classes and breeding classes, **12:00** Dairy Milk Cow Classes, **2 PM** Replacement Heifer Classes
10. Beef Cattle will Show on Wednesday only. Showmanship first and Market/breeding after Lunch.
11. Market Rabbits-Breeding show will still be held.
12. THERE BACK!!! POULTRY SHOW
13. New Phone Number 559-570-3443
14. We will be allowing exhibitors to enter (2) market animals per species. Still only selling 1 with the exception of overall champions. Replacement animals are limited to 1 per species.
15. Chickens and Market pens will be limited to one pen per exhibitor. You may have a pen of Hens and a Market pen. Remember a market bird that sells in the first week will cancel your Market animal for the second week, with the exception of champions.
16. Auction:
  - a. We are still planning the Auction and plan to be in person but are also looking at having an online/virtual element also!
  - b. BIG Changes for Buyers ..... Wells Fargo is NOT supporting the auction like they have in the past ..... This means if your youth are counting on Wells Fargo to bail them out that they will be waiting for a long time!! PLEASE encourage all exhibitors to have a buyer before they commit to their projects.

**Every exhibitor MUST enter online and attach documents and photos in the required fields.**  
**Paper copies will not be accepted !!**

**DUE TO THE COVID-19 OUTBREAK DATES AND TIMES MAY BE CHANGED IN ORDER TO**  
**COMPLY WITH STATE AND LOCAL RULES.**

## JUNIOR LIVESTOCK DEPARTMENT

Terri O'Leary-Collins  
Livestock Superintendent  
New Phone Number  
559-570-3443  
[livestock@fresnofair.com](mailto:livestock@fresnofair.com)

AS REFERRED TO IN SECTION 2 OF THE STATE  
RULES FOR CALIFORNIA FAIRS, ALL STATE RULES  
APPLY

[www.cdfa.ca.gov/fe](http://www.cdfa.ca.gov/fe)

### LIVESTOCK DEPARTMENT SCHEDULE

The Livestock Office hours will be 9 AM to 4 PM  
Monday through Friday  
Starting Tuesday, September 1, 2021  
Phone (559) 570-3443  
ENTER ONLINE at [www.FresnoFair.com](http://www.FresnoFair.com)

#### PRE-FAIR DATES AND TIMES

##### FRIDAY, May 14, 2021

Emailed Lists by club of Market Exhibitors. Lists should be submitted by species. To [tcollins@fresnofair.com](mailto:tcollins@fresnofair.com). Beef and Dairy lists should have already been submitted but you may submit again.

##### MONDAY, MAY 31, 2021

Beef and Dairy CONTRACTS are due ON-LINE ENTRIES ONLY for Dairy Prospect, Replacement Heifers and market steers are due.

Independent intent to exhibit paperwork is due. (2020) independents that did not file an independent record book on 12/30/2020 are not eligible to show as an independent at the 2021 Junior Livestock Show)

Beef market contracts, photos with ear tags in the ear (3 photos head shot with exhibitor, right side and left side), bill of sale/brand inspection, and health certificates for out of state animals are due.

##### FRIDAY JUNE 4, 2021

Independent Intent to exhibit are due in the Exhibits office or Livestock office by 4PM

##### THURSDAY JULY 1, 2021

LIST OF EXHIBITORS FOR SWINE, MEAT GOAT, & SHEEP, BY CLUB, CHAPTER, or EXHIBITOR  
EMAILED TO: [livestock@fresnofair.com](mailto:livestock@fresnofair.com)

These numbers need to be accurate.

This information is used to determine the number of ear tags.

##### SATURDAY JULY 10, 2021

##### 7AM-10AM Heifer Inspection 11AM-1PM Doe Inspection

Replacement heifers and Replacement Doe Inspection. Entries, Photos, and Contracts Due On-Line. This is a Mandatory -Dairy inspection to be eligible to enter and sell at the 2021 Junior Livestock show and auction.

##### Monday, August 2, 2021

Market sheep, goat, and swine entries are due

##### TUESDAY, AUGUST 31, 2021

All Fur and Feathers entries are due & Large animal Breeding and showmanship are due.  
(EXAMPLE: breeders and feeders)

FRIDAY SEPTEMBER 17, 2021 Last day to order Discounted Wristbands.

##### MONDAY-FRIDAY ONLY, SEPTEMBER 27 - OCT 4, 2021

##### 8AM -3PM

PREPAID WRISTBANDS READY FOR PICK UP IN THE LIVESTOCK OFFICE

##### Monday, SEPTEMBER 27, 2021

Pee Wee Showmanship Entries Are Due  
Lads and Ladies Lead Entries Are Due  
Beef Beaus and Belles Entries are Due .

4PM Gragnani scholarship applications are due in the exhibits office by

All entries MUST be done on-line. All required documents must be uploaded in the proper upload area. No hand carried documents will be accepted.

ALL WRISTBANDS MUST BE PICKED UP PRIOR  
TO WEDNESDAY,  
OCTOBER 6, 2021,  
THE OPENING DAY OF THE FAIR  
WRISTBANDS MAY BE PURCHASED ON-LINE.  
WRISTBAND FORMS MUST BE MAILED OR  
EMAILED TO: [livestock@fresnofair.com](mailto:livestock@fresnofair.com)

All exhibitors should carry a thermometer in their tack box.

All clubs, chapters, and independent exhibitors will be scheduled for haul in and haul out.

# IMPORTANT FAIR DATES AND TIMES

## SUNDAY & MONDAY OCTOBER 3-4, 2021

8 AM-1PM All chapters/clubs may set pens and tack.  
Please call the livestock office prior to arrival.  
No trucks or trailers will be allowed to park  
on grounds after tack has been UNLOADED.

**ALL COVID-19 PROTOCOL WILL BE FOLLOWED IN ORDER  
GAIN ENTRY TO THE FAIRGROUNDS. WRISTBANDS WILL  
BE DISTRIBUTED AT STAGING IN ACCORDANCE WITH  
COVID-19 PROTOCOL**

**ALL Clubs, Chapters, and Independents will have a  
scheduled haul in time. Please watch your emails.  
Entrance of all junior dairy cattle & Dairy goats.**

## OCTOBER 5, 2021

**Week 1 Champion of Excellence ENTRIES DUE**

6AM-2PM Haul in -Dairy cattle, Dairy goats, Pygmy  
goats, Rabbits, Poultry

5:30 PM **Pregnancy and Soundness check** for all  
Dairy Replacement Heifers and Soundness  
check for Prospect Dairy Replacement Heifers  
Dairy Replacement Does Pregnancy and  
soundness check Following Dairy inspection

**REMEMBER, YOU HAVE A SCHEDULED TIME TO GO  
THROUGH THE STAGING AREA BETWEEN THE  
HOURS OF 7 AM AND 3 PM  
SEE MAP ON PAGE 63  
BE ON TIME WITH YOUR GROUP**

## WEDNESDAY, OCTOBER 6, 2021

8 AM **Junior Dairy Goat Showmanship**  
FFA /Independent, followed by  
4-H /Independent, followed by Dairy Goat  
Breeding

## THURSDAY, OCTOBER 7, 2021

8 AM **DAIRY CATTLE SHOW**  
FFA /Independent, followed by  
4-H /Independent, followed by Registered  
Heifer classes and breeding classes

10 AM **JUNIOR PYGMY GOAT SHOWMANSHIP.**  
4-H/Independent followed by  
FFA/Independent; followed by Pygmy Goat  
Breeding. All 4-H, FFA and Independents  
(PYGMY GOAT RING)

12:00 Dairy Milk Cow Classes  
2 PM Replacement Heifer Classes

**Selection of Supreme and Reserve Supreme  
Champion Dairy Replacement Heifers**

5 PM Peewee Dairy Cattle Showmanship  
5:30 PM Peewee Goat Showmanship

## FRIDAY, OCTOBER 8, 2021

4 PM -6 PM **Champions of Excellence Interviews**  
2:00 PM **Dog Show**  
3 PM **PAINT BRANDING AUCTION ANIMALS**  
(This is an approximate time depending on sale order)

## SATURDAY, OCTOBER 09, 2021

**PHASE 1 OF THE JUNIOR LIVESTOCK AUCTION FEATURING:**

9:00 AM Market Fur and Feathers  
4:30 PM Dairy Buyer Family reunion  
6:30 PM Dairy Replacement Heifer Auction  
8:00 PM Dairy Heifer, Dairy Cattle Haul out after Sale.  
Select livestock exhibitors may haul out  
breeding and non-sale animals after the auction.

**All stalls must be cleaned prior to release**

**ALL AUCTION LIVE PICK UP ANIMALS ARE AVAILABLE FOR  
RELEASE UPON THE COMPLETION OF THE  
AUCTION. ALL LIVE PICK UP ANIMALS MUST BE  
PAID IN FULL IN ORDER TO LEAVE THE  
GROUNDS.**

## SUNDAY, OCTOBER 10, 2021- BARN CLOSED TO PUBLIC

6 AM-8 AM LIVE PICK UP-AUCTION ANIMALS  
8 AM-11AM Release of all Junior Animals - Week One  
5 PM TACK HAUL IN FOR CATTLE AND OTHER -  
MUST HAVE APPOINTMENT TO ENTER THE  
BARN

**RELEASE FORMS ARE AVAILABLE IN THE LIVESTOCK OFFICE  
REMEMBER, YOU MUST GO THROUGH THE STAGING AREA**

## MONDAY, OCTOBER 11, 2021 SUBJECT TO CHANGE!!

6 AM - 2 PM SCHEDULED HAUL IN OF BEEF, SHEEP, SWINE  
AND MKT GOATS.  
Goats will weigh in upon arrival.  
7 PM Carolee Boele Memorial Lads & Ladies Lead  
commentaries are due-NO FAXED COPIES WILL  
BE ACCEPTED. You may email them to:  
[livestock@fresnofair.com](mailto:livestock@fresnofair.com)  
7 PM LATE SHOWMANSHIP ENTRIES CLOSE 25.00  
LATE FEE+ENTRY FEE ARE

## TUESDAY, OCTOBER 12, 2021

6 AM - 12 Noon Beef Weigh in, Swine, and Sheep.

## WEDNESDAY, OCTOBER 13, 2021

8 AM **Market Lamb Show;** FFA /Independents,  
followed by 4-H /Independents, Feeders, Bred  
by Exhibitor, Pen of 2, and Groups will be  
judged after each division.

8 AM **Market Junior Boer Goat -**  
**In fur and feathers Show ring**  
FFA /Independent, 4-H/Independent Boer Mkt.  
Goat, followed by Dairy market goats.

8 AM **MARKET HOGS**  
4-H/Independent followed by  
FFA/Independent. Bred by Exhibitor, and  
Groups will be judged after each Division.

8 AM **Beef Showmanship.**  
4-H/Independent, followed by  
FFA/Independent, followed by Junior Breeding  
Beef classes. New This year. There will be a  
break between Breeding and Market. All market  
beef may be fitted with adhesive and other  
fitting products.

\*\*Continued on next page

**WEDNESDAY, OCTOBER 13, 2021**

**1 PM** Market Steer/ Market Heifer Show  
FFA/Independent, 4-H/ Independent, Bred by Exhibitor, and Groups will be judged after each Division, Followed by All Feeder Steers/Heifers.

**6:30 PM** SELECTION OF ALL MARKET CHAMPIONS EVENT

**THURSDAY, OCTOBER 14, 2021**

**8 AM** Swine Showmanship.  
4-H /Independent, followed by  
FFA/Independent  
BREEDING SWINE CLASSES  
FEEDER SWINE CLASSES

**8 AM** Sheep Showmanship.  
4-H/Independent, followed by  
FFA/Independent, followed by all Junior  
Breeding Sheep

**6 PM** Peewee Sheep Showmanship-Pre Entry  
Required!

**FRIDAY, OCTOBER 15, 2021**

**9:00 AM** ROUND ROBIN  
FFA/Independent, 4-H /Independent Round Robin Winners will bring a fitted animals to the show ring. Please make sure that the animal that is brought to the show ring is easy to handle. If you are unsure of the animal

**1 PM** Lads and Ladies Lead /Beaus and Belles Practice run through location to be announced.

**3 PM** Carolee Boele Memorial Lads and Ladies Lead Competition.

**4 PM** BEEF BEAUS AND BELLES

**4:30 PM -6 PM** Champions of Excellence Interviews

**TBA** PAINT BRANDING OF SALE ANIMALS- (Paint branding will begin as soon as the sale order has been finalized)

**SATURDAY, OCTOBER 16, 2021**

**8:30 AM** PHASE II OF THE JUNIOR LIVESTOCK AUCTION FEATURING: Sale of Champions  
Followed by Swine in Ring & Goats Ring #2  
Sheep and Beef to alternate in Ring #1

**SUNDAY, OCTOBER 15, 2021**

**6 AM - 8 AM** RELEASE OF LIVE PICK-UP AUCTION ANIMALS & BREEDING HOGS

ALL LIVE PICK UP ANIMALS MUST BE PAID IN FULL, IN ORDER TO OBTAIN A RELEASE FROM THE LIVESTOCK OFFICE  
HAULERS MUST HAVE PINK COPIES OR RECEIPT

**1PM** Barnyard Olympics/\$12.00 per Team

**4 PM - 8 PM** Release of All animals-time subject to change.

RELEASE FORMS ARE AVAILABLE IN THE LIVESTOCK OFFICE

**REMEMBER, YOU MUST GO THROUGH THE STAGING AREA BETWEEN THE HOURS OF 4 PM AND 8 PM**

**MONDAY, OCTOBER 18, 2021**

**ALL WATER SYSTEMS MUST REMAIN UNTIL MONDAY OCTOBER 18. Parents, leaders, advisors may pick up water systems after 11:00 AM.**

ALL MARKET ANIMALS HALTERS, NECK ROPES, WATER SYSTEMS; NECK CHAINS SHOULD BE MARKED WITH NAMES AND PHONE NUMBERS. IT IS THE EXHIBITORS RESPONSIBILITY TO PICK UP ALL ITEMS. ITEMS LEFT AFTER 30 DAYS WILL BECOME PROPERTY OF THE BIG FRESNO FAIR.





## 2021 MARKET WEIGHTS FOR ALL SPECIES

### BEEF

Feeder Steers	400 LBS. - 999 LBS.
Market Steers	1000 LBS.-1400 LBS.
Heavy Weight Steers	1401 LBS - & OVER

### SWINE

Feeder Pigs	209 LBS. & BELOW
Market Hogs	210 LBS. - 280 LBS.
Max Weight	280 LBS
SUPER HEAVY WT.	281 LBS - 300 LBS
(Super heavy wt. hogs will not be eligible for sale, however they will be allowed to show on Thursday after the Showmanship classes)	

### SHEEP

Feeder Lambs	99 LBS. & BELOW
Wether or Ewes	100 LBS.-150 LBS.
Super Heavy Weight	151 LBS. & OVER

**All Sheep will have teeth checked for age verification & Health verification**

### GOATS

Feeder Goats	59 LBS. & BELOW
Wether OR Doe Kids	60 LBS.-105 LBS
Super Heavy Weight	106 LBS.-& OVER

**Resale Champion Goats will pay to 105 pounds**

**All Sheep will have teeth checked for age verification & Health verification**

**ALL SHEEP AND GOATS MUST BE CLIPPED/SHAVED  
THEIR WILL BE NO BODY CLIPPING DURING THE FAIR.**

**BARNYARD OLYMPICS**  
**\$12.00 per Team**



## 2021 ENTRY FEES SCHEDULE FOR ALL SPECIES

### BEEF

Breeding Beef	\$12.00
Market & Feeders	\$12.00
Showmanship	\$10.00
Chute Fees	\$15.00

### SWINE

Market & Feeders	\$12.00
Breeding Swine	\$10.00
Showmanship	\$10.00

### SHEEP

Production Ewes	\$10.00
Market & Feeders	\$12.00
Lads & Ladies Lead	\$12.00
Showmanship	\$10.00
Stand Fees	\$10.00

### GOATS

Breeding Dairy Goats	\$10.00
Replacement Dairy Does	\$12.00
Dairy Goat	
Showmanship	\$10.00
Market & Feeders	\$12.00
Breeding Boer Goats	\$12.00
Boer Showmanship	\$10.00
Stand Fees	\$10.00

### DAIRY

Registered Dairy	\$12.00
Grade Dairy	\$12.00
Dairy	
Replacement/Prospect	
Heifers	\$12.00
Showmanship	\$10.00
Chute Fees	\$15.00

### PEE WEE CLASSES

\$15.00

# FRESNO FAIR UNIFORM REQUIREMENTS



## FFA MEMBERS

The Future Farmers of America is a national organization of students enrolled in high school vocational agriculture classes. The local unit is the chapter in each high school offering vocational agriculture under the supervision of the agriculture teacher who is always the local chapter advisor. The state unit includes all chapters of the state, under the supervision of the State Dept. of Education as represented by the Bureau of Agricultural Education, with its headquarters at the State Education Bldg., Sacramento.

The national unit is the group of associations in each state, and Puerto Rico, under the supervision of the Agricultural Education Div. of the U.S. Office of Health, Education and Welfare, Washington, D.C. Every Future Farmer project in livestock, poultry, fruit or crops, is part of the practical education of the vocational agriculture student who owns it. The program includes the improvement of agriculture leading ultimately to the ownership of the farms and the development of good rural citizenship. Participation in fairs and livestock shows is recognized as having educational value as well as stimulation for better results and finer projects under the supervision of the qualified chapter advisor and with the cooperation of the Fair Management. Exhibits must be from projects carried on by active members of the regular Future Farmers Chapters.

### FFA UNIFORM

The official FFA show uniform shall be worn by all FFA exhibitors and by helpers in individual and chapter groups while showing at fairs and livestock shows. The uniform shall consist of white trousers, white dress shirt or blouse (short or long-sleeved) with the FFA emblem attached to the left pocket, and the official FFA blue necktie for boys or FFA blue scarf for girls. The official FFA jacket is optional; if worn, the shirt emblem is not required. Hats or headgear of any kind shall not be worn with the official show uniform while showing.

## BARN DRESS CODE Exhibitors

In addition to organizational requirements, The Big Fresno Fair requires that all exhibitors, wear closed toe shoes. Absolutely no sleeveless blouses or shirts, spaghetti straps, low-cut blouses, or bare midriffs. Pants should be fitted not to impede normal walking. NO pants may be worn lower than the hip area. NO shorts or spandex shorts will be permitted in the barn while animals are present.

## 4-H CLUB MEMBERS



4-H youth programs are non-formal voluntary educational programs under the supervision of the Cooperative Extension Service of the University of California and the Cooperative Extension Service of the University of California and the United States Department of Agriculture. They are a part of Extension teaching. The projects exhibited at fairs by members of these groups are the results of their efforts under the supervision of volunteer adults.

### LOCAL 4-H UNIFORM

White or off-white trousers, white shirt, 4-H tie and hat for boys. White or off-white trousers or skirt, white shirt or blouse with 4-H tie or 4-H scarf and hat for girls. Show uniform requirement is determined by the 4-H organization.

**4-H GENERAL APPERANCE:** Hats must be worn on the 4-H members head in show ring. Baggy pants and spandex are not acceptable. White skirt or culottes may be worn by girls.

**(The uniform requirements are set by the Fresno County Extension Office, not the Fresno Fair. Leaders and county staff are responsible for enforcing all uniform violations. )**

## INDEPENDENT EXHIBITORS

Independent junior exhibitors not affiliated with any organization can enter appropriate FFA or 4-H classes if they meet the age or grade level requirements. Fair Management can establish a separate class if there are sufficient entries. Juniors who have been FFA or 4-H members within 60 days prior to the fair are not eligible to compete as independent juniors (120 days for cattle). Independent juniors entering market and breeding animals must provide Fair Management with a permanent tag and/or tattoo information 120 days prior to the fair for beef and dairy and 60 days prior to the fair for sheep, swine and goats. Independent exhibitors must have "on grounds" supervision by a competent adult at all times.

### INDEPENDENT UNIFORM

White shirt, white pants, closed toe shoes, and belt. No Head Gear.

### REQUIREMENTS:

**ALL INDEPENDENT EXHIBITORS MUST FILL OUT FIRST AID FORMS AND SUBMIT THEM ON-LINE WITH THEIR ENTRIES!**



## LOCAL RULES

ALL POLICIES AND DECISIONS OF THE LIVESTOCK DEPARTMENT WILL BE MADE IN THE BEST INTEREST OF THE FAIR, THE EXHIBITOR, AND THE PUBLIC.

### 2021 STATE RULES FOR CALIFORNIA FAIRS

Mailing Address: 1220 N Street, Sacramento, CA 95814  
Phone: (916) 999-3000  
Fax: (916) 999-3001  
[www.cdffa.ca.gov/fe](http://www.cdffa.ca.gov/fe)

By signing and submitting an entry form the exhibitors and their agents, parents and leaders acknowledge and agree that they: a) Understand and have read these Local Rules and State Rules b) Agree to abide by them c) Certify that all information on the entry form is true and accurate; and d) Agree to comply with the fair's decision regarding any alleged violation of the State or Local Rules e) In the event that it is determined there has been unethical treatment of animals or violation of state or federal regulations or of state or local fair drug policy rules, exhibitor names will be forwarded to F&E as well as given to the Network of California fairs and to appropriate government agencies. f) The Big Fresno Fair reserves the right to publish, for its intended use, any and all photographs taken of exhibits entered in the Big Fresno Fair by official Fair Photographer &/or Fair Staff. Participants, Advisors, Leaders, Teachers, etc. approve the use of any photo taken on the fairgrounds upon submission of entry.

1. All junior exhibitors must be members of the following groups: Fresno County 4-H, a Fresno County FFA Chapter, or registered with the fair as an Independent junior exhibitor. All exhibitors must be full-time residents of Fresno County.
2. **4-H, Independent, and FFA members must be supervised by an adult at all times while on the fairgrounds.**
3. Junior exhibitors are expected to groom and care for their animal(s) when at the fair. They shall refrain from accepting active assistance from adults and non-exhibiting youth unless the junior exhibitor is actively engaged, and the assistance is only for instruction. Local fair rules will determine enforcement.
4. Wet towels, ice, cool brace, or other such products will not be allowed at any time. Blankets/tubes, may be used, but may not be used at ringside unless weather requires blanketing for warmth.
5. Junior exhibitors who, for extraordinary reasons, cannot fit and/or show their animals must make arrangements for their fitting, care and showing that are acceptable to the Fair's Livestock Management, prior to the date for judging, or be disqualified from competition. Contact the Livestock Office to make these arrangements and receive prior permission in writing.
6. **ALL MARKET LAMBS, AND GOATS MUST BE SLICK SHEARED PRIOR TO ENTERING THE FAIRGROUNDS.** No animal that shows any evidence of any active, unsightly or communicable disease, or any unsightly disease or other condition shall be admitted or allowed to remain on the fairgrounds.

7. Exhibitors are expected to properly water and feed their animals, including those that sold in the Junior Livestock Auction, through Sunday, October 11, 2021, or through Sunday, October 18, 2021. You must sign **IN AND OUT, LISTING** the pens and stalls for which you are responsible. **NO EXCEPTIONS.** Sign-in forms are available in the Livestock Office. Removing animals prior to posted release time without written permission from Fair Livestock Management will result in forfeiture of premiums, probation for a minimum of 1 year and possible banning from the fair in the future.

Criticizing or interfering with the judge, other exhibitors or show officials while attending the Junior Livestock Show **WILL** result in an individual or group being expelled, placed on probation or declared ineligible at The Big Fresno Fair Junior Livestock Show in the future.

**SHOW CLERKS WILL HAVE THE AUTHORITY TO ASK PARENTS TO LEAVE OR EXHIBITORS FOR ABOVE BEHAVIOR**

8. To exhibit as a 4-H member, one must be 9 years old by December 31, PRIOR YEAR, and may exhibit UNTIL AGE 19, DECEMBER 31 OF THE CURRENT YEAR. EXHIBITORS ARE ONLY ALLOWED TO EXHIBIT ONE FAIR AFTER GRADUATION!!
9. No family member, advisors, or leaders will be allowed in the ring once a show has begun. Anyone impeding the flow of exhibitors entering the show ring will be asked to leave the area.
10. Independent junior exhibitors who are not FFA or 4-H members will enter appropriate FFA or 4-H classes. They must meet the following age requirements:
  - a. Exhibitor must be 9 years of age on January 1, of current year.
  - b. Exhibitor must not be older than 19 years of age on January 1, of current year. This age is for Fresno Fair Local Rule only.
  - c. Independent exhibitors 9 years old or in the 4<sup>th</sup> through 8<sup>th</sup> grade by January 1, of current year, will be combined with 4-H. Independent exhibitors in the 9<sup>th</sup> through 12<sup>th</sup> grade and not older than 19 will be combined with FFA.
11. All Independent exhibitors must provide an up-to-date Big Fresno Fair Project list supplemental page/intent to exhibit by September 6, of current fair year. All Independent exhibitors must provide a completed and closed out Record Book by December 31 of current fair year, in order to continue exhibiting as an Independent exhibitor in the future. Independent Summary Sheet & Record books are available in the Livestock Office.
12. Exhibitors may switch from one organization to another organization or to independent status ONCE during a calendar year and must be separated from their previous status 120 days in the case of beef and dairy cattle, and 60 days in the case of sheep, swine, goats and small animals.

**For further clarification please visit: Fairs & Expositions Youth Agreement at [www.cdffa.ca.gov/fairsandexpositions](http://www.cdffa.ca.gov/fairsandexpositions) for more information).**
13. No junior exhibitor may exhibit an animal in a market class once it has been sold as a market animal through a fair junior livestock auction. These animals may be shown following the 30 consecutive day ownership requirement as breeding animals only. All champion and reserve champion market animals will be permanently identified by the fair if sold through a fair junior livestock auction, unless these animals are sold at a terminal sale with no live animal pick-up.

14. Animal projects must be owned solely by and under the exhibitor's care and management and under the supervision of the organization in which the project will be shown as specified below. The official ownership date is the date shown on the receipt of sale unless the animal was bred by the exhibitor. The days are counted prior to the opening day of the fair unless the event in the case of horse shows is held separately from the Fair. Ownership must be maintained through show date(s) of fair or event. See also VIII Livestock Department. a. Market animals: Beef - 120 consecutive days; and 60 consecutive days for swine, sheep, veal and goats. b. Breeding and feeder animals: 30 consecutive days. c. All small market animals (rabbits and poultry): 30 consecutive days.

**Proof of Ownership consists of: Brand Inspection Certificate in the Exhibitor's Name issued at time of original purchase; or Sale billing in the exhibitor's name; or Completed Bill of Sale to the exhibitor with a state brand inspector's authorization of release for inspection at destination. The request for verbal release must be made by the seller prior to the exhibitor taking custody of the animal and include the date, inspector's name and phone number.**

**The animal may not be resold without physical brand inspection.**

**Substitution for any animal is at the discretion of the livestock office. No animal will be replaced or substituted 30 days prior to the weigh in date at the fair. All substitutions will be charged a \$15.00 re-entry fee.**

15. Original Registration Certificates, or a duplicate of the Original Registration Certificate from a Breed Association, must be presented to the Livestock Office when exhibitors are checking in their animals at The Big Fresno Fair. Photocopies or any other form of duplication of original documents are not eligible.

**Substitutions can only be accomplished within a division. Substitutions must be made when the exhibitor arrives on the fairgrounds. All changes may be made in the livestock office a minimum \$15 penalty must be paid 24 hours prior to judging for each substitution made by the exhibitor in excess of two in the division. State rule #5 page 6 of the CDFA rules.**

16. **Cattle, swine, sheep and goats entering the State of California require an official Certificate of Veterinary Inspection, individual identification, and a California entry permit issued by the AHFSS, CDFA. ENTRIES WITHOUT PROPER DOCUMENTATION WILL BE DISQUALIFIED!**
17. **STAGING AREA :** All FFA, 4-H and Independent exhibitors MUST GO TO THE STAGING AREA at the corner of and Cedar & Butler Hanojans Lot and will then be moved up to the fairgrounds through the Livestock Butler Avenue gate. Fair employees will be on hand to assist with, tack and feed from your vehicle. SEE STAGING AREA MAP PAGE 83.
18. **NEW\*\***All animal pens or stalls shall be cleaned not later than **9:00 AM** every day. Pens and stall areas should be kept clean during show days. Pens and stalls should be ready for exhibit at all times while the barn is open to the public 10am-8pm.
19. Signs will not be permitted advertising exhibits "For Sale."
20. Feed and/or bedding must not be stacked any higher than the tie stall fences and/or pens. There must be a two-foot clear air space with the exception of educational displays (refer to Herdsmanship rule) above all tie stalls and pens. No netting or shade cloth will be allowed in stall areas. Shavings or Straw may be used to bed animals.

21. Educational displays may not be attached to wood, plastic, or metal by screws or nails. Signs may not be attached to overhead water lines. Lattice type material will only be allowed, in order to keep air flow moving through the barn. If educational materials obstruct security cameras, fair staff may ask exhibitors to modify materials.

23. All alleyways must be kept clear and gates closed. Walkways may not be fenced off, by order of Fire Marshall. Locks may not be used on gates.

24. Generators equipped with **silencers** may be brought to the fair for grooming use. **All generators must be approved by the Livestock Office AND TAGGED.** All grooming must be done within the barn. Generators are not allowed inside the barn at any time.

**YOU MUST ENTER ONLINE AT: [WWW.FRESNOFAIR.COM](http://WWW.FRESNOFAIR.COM)**

25. Community water troughs will not be permitted in tie-stall areas to ensure the health of animals and the public. In-line water systems for swine/ Dairy cattle must be fully functioning at all times. If in-line water systems are not fully functioning (no leaks allowed), exhibitors will be instructed to remove/repair the system in favor of providing adequate water for the animals. Dairy cattle from the same school or ranch may use watering troughs, but they **may not impede the flow of traffic.**

26. All market and feeder animals must be weighed. Check the Livestock Schedule for official weigh-in times. All animals must be brought to the scales by the exhibitor or A MEMBER OF THE SAME FAMILY, CHAPTER, OR CLUB for official weigh-in. Cattle which cannot be controlled by their handler will be excused from the Fresno Fair by the Livestock Superintendent. **ALL MARKET ANIMALS MUST HAVE EAR TAG IN PLACE IN ORDER TO WEIGH IN. SHEEP AND GOATS MUST HAVE SCRAPIES TAGS IN THEIR EARS AT THE WEIGH IN TIME.**

**WE CANNOT SHIP ANIMALS WITHOUT THE PROPER EARTAGS. \$50.00 WILL BE DEDUCTED FROM MARKET CHECKS IF EAR TAGS ARE REMOVED.**

27. All market animals must be tagged in order to exhibit at The Big Fresno Fair. The Sheep and Goats are using BFF assigned RFID tags. Staff, Ag advisors, leaders, parents, may tag animals. Tags will be replaced at a charge of \$10.00. For EID TAGS & \$5.00 for NON EID tags.
28. Artificial means of filling animals is prohibited. Drench guns, stomach pumps and/or any mechanism used to artificially fill or provide a liquid diet (drench) are not allowed. Any exhibitor in violation of this rule will be subject to disqualification and/or loss of premiums. There can be no drenching or tubing of any livestock with any product (i.e.: calf calm, tryptophan, or any substance that may alter the behavior of the animal). Any deviation from product description must be approved by the Fresno Fair Veterinarian.
29. All equipment left more than 30 days after the close of the fair will become the property of The Big Fresno Fair Livestock Department.
30. All exhibitors will clean pens prior to receiving a release form from the livestock office.
31. Late showmanship entries: entries will be posted on haul in day. Only on haul in date may a late entry for showmanship be accepted at a fee of \$25.00 plus original entry fee.

Beef cattle may not be shown in CABLE halters, show halters must be constructed of leather.

## WRISTBANDS/PARKING PASSES

May be purchased with entries/please note you will still need to submit forms to the livestock office with names of siblings, parents, and grandparents. Please attach a copy of your receipt to the form. You may email it to [livestock@fresnofair.com](mailto:livestock@fresnofair.com)

**Community Club Leaders:** Leaders list must be sent to Livestock Office by **September 1, 2021**, to ensure participating leaders wristbands. FFA Advisor wristbands will be issued according to lists obtained from school administration.

**Checks that are returned for NON-SUFFICIENT FUNDS for any payments to The Big Fresno Fair (wristbands, parking passes, auction etc.) are subject to a \$35.00 fee for each check.**

Wristbands will be issued at the following rate:

- a. Exhibitor - 1 wristband, no charge.
- b. Parent Leader of an Independent 1 wristband, 1 parking pass.
- c. Leader - 1 wristband, 1 parking pass, limit two leader wristbands/parking pass per species, per club exhibited, no charge.
- d. Advisor - 1 wristband/parking pass per advisor of a school, no charge.
- e. **PREORDERED WRISTBANDS:** Wristbands will be available for purchase for:  
Parents - \$18 each, limit 4 per family.  
Siblings - \$12 each, ages 7-19 (not showing).  
Grandparents - \$15 each, limit 4.  
Parking - \$25 each, limit 2 per family.  
All wristbands ordered after September 18, 2021 will be sold at an increased rate.  
**CASH OR CREDIT CARD ONLY** after 9/20/21
- f. The wristbands cannot be mailed, nor can they be given to anyone other than the person who ordered them. All pre-ordered wristbands will be available to be picked up September 27-October 4, 2021 between the hours of 8 AM, and 3PM. Excluding weekends and holidays,
- g. All wristbands must be picked up prior to opening day of the Fair, Wednesday, October 6, 2021. This includes all 4-H/FFA/Independents, Clubs and Chapters.
- h. If an exhibitor's wristband is confiscated at the gate the exhibitor will be charged \$12.00 for a new band. The wristbands are for the convenience and safety of the exhibitors. Wristbands should not be shared or given to any other person.

## JUNIOR LIVESTOCK AUCTION RULES

**NO CASH AWARDS WILL BE PAID ON ANY ANIMALS IN THE MARKET AND REPLACEMENT DIVISIONS.**

### General Information

1. All animals entered in the 4-H/Independent, FFA/Independent market divisions that are judged as market ready, as listed in the Exhibits Handbook, shall be eligible for auction. All 4-H/Independent, FFA/Independent Grand Champions and Reserve Grand Champions must sell. All animals shall be sold, alternating between the 4-H/Independent, FFA/Independent exhibitors. Animals shall be judged under the American System of Judging by division for sale order.
2. Animals exceeding top weight limits will be allowed to show in a super-heavyweight class in each species, excluding swine. For the purpose of the auction, all animals in the super-heavyweight division will sell at the top listed SPECIES WEIGHT, NOT THE WEIGHT RECORDED AT THE SCALES.
3. All meat/milk producing livestock that has been given any medication must meet the proper withdrawal period to be eligible for the Livestock Auction. All medications must be provided and administered by the Fresno Fair veterinarian for the duration of the fair. No natural or unnatural substances may be administered that may alter the temperament of an animal. If found in violation of this rule exhibitors will be removed from the sale. All exhibitors will sign a drug release form at the time of weigh in.
4. The Livestock Department shall arrange the order of sale after completion of judging.
5. A six (6) percent sales commission will be charged to defray cost of the auction.
6. The Junior Livestock Auction will consist of two phases. Phase I will be held Saturday, October 09, 2021, beginning at 9:00 AM, starting with Sale of Champions, Fur & Feathers, Meat, Dairy Replacement Does and Dairy Market Goats. Starting at 6:30 PM the Dairy Prospect and Replacement Heifer auction will be held. SALE MAY BE HELD VIRTUALLY OR IN PERSON DEPENDING ON STATE RESTRICTIONS.

Phase II will be held Saturday, October 16, 2021, beginning at 8:30 AM featuring the Sale of Champions followed by Market Beef, Sheep and Swine. SALE MAY BE HELD VIRTUALLY OR IN PERSON DEPENDING ON STATE RESTRICTIONS.

The Phase II sale will be held in two rings. Ring II will feature a Sale of Champions to start the Auction.

### **MARKET ANIMALS WILL CONSIST OF:**

- |          |             |
|----------|-------------|
| 1. Beef  | 5. Rabbits  |
| 2. Sheep | 6. Chickens |
| 3. Swine | 7. Turkeys  |
| 4. Goats |             |

### **REPLACEMENT ANIMALS WILL CONSIST OF:**

1. Dairy Replacement Heifers
  2. Dairy Prospect Replacement Heifers
  3. Dairy Goat Replacement Doe
7. All division grand champion and reserve grand champion market animals in 4-H/independent, FFA/independent, including beef, swine, sheep and all goats (Dairy, Boer/Meat Goat) will BE DEEMED terminal sales only. These animals will be shipped directly from the fairgrounds to a processing facility. There will be no resale other than to a processing plant. THESE ANIMALS CAN NOT BE PICKED UP OR GIVEN BACK TO THE EXHIBITORS.

8. **Replacement of auction checks and/or premium checks:** If an auction check or premium check which has been issued to an exhibitor has been destroyed or lost by the exhibitor or his/her agent, a replacement check can be issued after a stop payment has been made and a fee of \$50.00 has been deducted. **ANY CHECK \$25.00 AND UNDER WILL NOT BE REPLACED. ALL FFA CHECKS MUST BE PICKED UP FROM THE EXHIBITS OFFICE. CHECKS WILL NOT BE MAILED TO SCHOOLS.**

9. Junior Livestock Auction animals must be sound on all feet and legs at the time of weigh-in, show, sale, and shipping.

**ANY MEDICAL CONCERNS MUST BE BROUGHT TO THE ATTENTION OF THE LIVESTOCK OFFICE AND FAIR VETERINARIAN IMMEDIATELY.**

10. **All Auction Buyers must fill out a Buyers application** to be eligible to participate in the Phase I and II Junior Livestock Auctions. Credit will only be extended to buyers that have previously purchased from the junior livestock auction and have a good record of payment.

**FRIDAY, OCTOBER 31, 2021  
ALL ADD-ONS MUST BE PAID BY 4 PM**

11. Payments for all animals purchased at the junior livestock auction or the dairy replacement heifer auction are due at the time of purchase, unless otherwise instructed. Virtual auction buyers will be billed as soon as the sale has been verified.
12. The Junior Livestock Auction of The Big Fresno Fair is managed entirely by fair staff and volunteers. Auction checks will be issued to the seller when all buyers/ ADD-ONS of their lot have paid in full. Prompt payment by buyers is appreciated. **Credit cards are acceptable forms of payment as well as cash and check.**
13. If a buyer has not established a credit relationship with the Big Fresno Fair, any live pick-up animals purchased by that buyer MUST be paid in full, before the animal(s) can be removed from the fairgrounds. IF A BUYER HAS BEEN DEEMED A SLOW PAY THEY MUST PAY IN FULL BEFORE REMOVING ANY ANIMALS FROM THE GROUNDS.
14. **Checks that are returned for NON-SUFFICIENT FUNDS for any payments to The Big Fresno Fair (entries, wristbands, parking passes, auction, etc.) Will be charged a \$35.00 fee for each check.**
15. **ONLY SALE ANIMALS** that have gone through the Junior Livestock Auction and are live pick up, will be allowed to leave early. All paperwork must be completed, and proof of payment presented to the livestock office, and then release form will be granted to the owner/agent/hauler of the animals listed on sale invoices.

#### **Phase I:**

All Live Pick-Up animals will be released after completion of the sale or may be picked up between the hours of 6AM and 8 AM Sunday October 10, 2021.

**No trailers will be allowed in the barn until completion of sale.**

#### **Phase II:**

All Live Pick-Up animals will be released Sunday, October 17, 2021 between **6:00 AM and 8:00 A.M.** OR **AFTER 5PM.** (Please make sure buyers are aware that live pickup means they must haul their own animals home or make arrangements to have their animals hauled.)

**CHANGE IN DISPOSITION MAY only be accomplished in the Livestock Office during a 1 hour period following the completion of either Phase I or Phase II of the Junior Livestock Auction.**

16. Market/Replacement animals are not eligible for cash (premiums) awards. ALL EAR TAGS MUST BE LEFT IN ANIMALS EARS. Removal of ear tags will result in a \$50.00 fine, and will be deducted from sale checks. Animals cannot be shipped without proper ear tags.

The Harvest Plants **WILL NOT** save/sell hides, heads, or any other parts under any circumstances!

17. A DATED BILL OF SALE OR BRAND INSPECTION FROM THE PREVIOUS OWNER (draw brand and state location of brand) of all beef animals and dairy replacement heifers must be presented to the Livestock Department when entries are due. Bill of Sale can be picked up after the show for animals not consigned for the junior livestock sale.
18. A brand inspection fee and beef promotion fee will be deducted for beef and dairy cattle. A pork promotion/American Lamb board fees will be deducted on all swine & Lambs sold.
19. The owner of the animal shall bring the animal to the auction ring at the time of sale in order to be sold. Only Exceptions Will Be Made Except In Extreme Emergency, Cow Palace, And School Sports. Arrangements Must Be Made Prior To Auction Time, In Writing.
20. **Mortality of all animals sold will be the seller's responsibility until the animals are harvested.**
21. Market steers, heifers, goats will be left with neck chains, neck ropes, and halters. Dairy replacement heifers and does will be paint branded. Halters, neck ropes, and collars should be marked with exhibitor names and clubs. (Twine or wire wrapped around the animal's neck is not acceptable. A species representative will check for a neck chain before a release will be given. **A 25.00 CHARGE WILL BE DEDUCTED FROM THE SALE PROCEEDS IF CHAINS ARE NOT ON GOATS. NECK CHAINS MUST BE ADJUSTED TO KEEP FROM SLIPPING OFF.)**
22. Exhibitors with two or more Blue or Purple Ribbon market animals, AND you do not wish to sell Blue or Purple Ribbon market animal, must file an **Intention of No Sale.** If this is not done, the **lightest animal** will be catalogued for sale. No Exceptions to this rule. The exhibitor must file an intent of no sale as soon as they have finished showing market classes. Exhibitors must have the ear tag and RFID information in order to complete the form. It is the responsibility of the exhibitor, advisor, or parent to properly and accurately fill out all paperwork. If the wrong tag is entered on the intent of no sale the animals listed will sell.
23. There will be a \$50.00 NO SALE FEE for A single market animals in order to defray the administration, awards, and judges expense of market classes. Exhibitors having two animals may remove one from the sale without a fee.

## MARKET ANIMAL SCORECARDS

### MARKET BEEF SCORECARD

MARKET READY	Market Beef projected to have sufficient fat deposition to meet the marbling specifications for USDA Prime, Choice, or Select + Quality Grades.
NOT MARKET READY	Market Beef lacking evidence of sufficient fat deposition to produce a desirable consumer product. Steers projected to grade USDA Select or lower.

### MARKET HOG SCORECARD

MARKET READY	U.S. No. 1 and No. 2 Hogs of average or greater conformation, that is acceptable in leanness, muscularity, and production traits.
NOT MARKET READY	Any Hog of below average conformation including U.S. No. 3, U.S. No. 4 and Utility Grade Hogs.

### MARKET LAMB SCORECARD

MARKET READY	USDA Prime or Choice quality with 12 <sup>th</sup> rib back fat range .16-.35 average or greater Conformation and cut-ability.
NOT MARKET READY	Good or Lower Quality Grade with 12 <sup>th</sup> rib back fat range <.16 or >.35; under-finished Lambs grading USDA good or lower, below-average conformation or cut-ability.

### MARKET GOAT (CHEVON) SCORECARD

MARKET READY	USDA Prime or Choice quality with 12 <sup>th</sup> rib back fat range .08-.12 most desirable, .13-.22 back fat acceptable, average or greater conformation and cut-ability.
NOT MARKET READY	Good or lower quality grade with 12 <sup>th</sup> rib back fat range <.08 or >.22; under finished goats grading USDA good or lower, below average conformation or cut-ability.

**Winners of Herdsmanship competition will be awarded a T-Shirt for their participation. Leaders and advisors will distribute shirts as they see fit.**

## HERDSMANSHIP

ENTRY FEE NONE

NO PRE-ENTRY REQUIRED

AWARDS OFFERED PER CLASS FOR DIVISIONS 1690 & 1691 & 1692

<u>DIVISION 1690</u>	FFA HERDSMANSHIP SWEEPSTAKES
<u>DIVISION 1691</u>	4-H HERDSMANSHIP SWEEPSTAKES
<u>DIVISION 1692</u>	INDEPENDENT HERDSMANSHIP SWEEPSTAKES

### HERDSMANSHIP GUIDELINES

1. There must be a 2-foot clear space above the tie stall backs and pen tops for circulation and security.
2. Herdsmanship may contain educational portions. It is important for all exhibitors to become familiar with the Exhibits Handbook. Ten points may be added or subtracted for answers to educational questions.
3. It is expected that exhibitors will be actively involved in cleaning their pens and stalls. Dairy Cattle, Pygmy, and Dairy Goat Herdsmanship will be judged Wednesday, October 6, 2021 through Sunday, October 10, 2021 until 11 AM. Beef, Sheep, Meat goat, and Swine Herdsmanship will be judged Wednesday, October 13, 2021 through Sunday, October 17, 2021 until 12 noon.
4. Failure to cooperate with state or local rules or instructions from management WILL result in a 0 (zero) in Herdsmanship. Pens should look neat and clean at all times while the fair is open to the public
5. All pens and stalls must be cleaned by 9 AM. Pens must be ready for view at 9AM. The fair has many early opening days. Please have your area ready for the public. It is the intent of the Livestock Department to make sure animals are housed and maintained in a clean, healthy and safe environment. Pens will be routinely inspected.

### AREAS SHOULD NEVER LOOK UNPREPARED OR UNPROFESSIONAL.

Failure to cooperate with state or local rules or instructions from management will result in a zero and possible loss of premiums or removal from the grounds.

### HERDSMANSHIP SCORECARD

CLUB/CHAPTER/INDEPENDENT IDENTIFICATION SIGNS MUST BE DISPLAYED IN ORDER TO BE ELIGIBLE FOR COMPETITION.

1. CLEANLINESS ANIMALS	10%
2. CLEANLINESS OF STALLS OR PENS	40%
3. CLEANLINESS AND ARRANGEMENT OF ALL EQUIPMENT	15%
4. NEATNESS AND ARRANGEMENT OF FEED ON HAND	15%
5. HEALTH AND SANITATION OF THE EXHIBIT	15%
6. EDUCATIONAL MATERIAL OR DISPLAY INCLUDED WITH ANIMAL DISPLAY	5%
<b>TOTAL 100%</b>	

# 4-H AND FFA CHAMPION OF EXCELLENCE

**OBJECTIVE:** TO REWARD THE 4-H AND FFA MEMBERS THAT HAVE UTILIZED THEIR LIVESTOCK AND SMALL ANIMAL PROJECTS TO THE FULLEST TO LEARN ABOUT SPECIES KNOWLEDGE AND SKILL, AND DEVELOP THEIR OWN PERSONAL ABILITIES IN COMMUNICATIONS AND LEADERSHIP. EMPHASIS IS PUT ON THE WORK THEY HAVE DONE WITH THEIR PROJECTS TO EXHIBIT THEM IN THE BEST MANNER.

**PROCESS:** ENTRY FORMS WILL BE TURNED INTO THE FRESNO FAIR LIVESTOCK OFFICE BEFORE THE DEADLINE TO BE INCLUDED. AN INTERVIEW WITH THREE PEOPLE WILL BE SCHEDULED DURING THE FAIR. EACH ENTRANT WILL BE SCORED USING THE SCORECARD BELOW. THE CHAMPIONS IN EACH SPECIES WILL BE ANNOUNCED AND AWARDED AT THE LIVESTOCK AUCTION.

**SPONSORED BY** FRESNO MADERA FARM CREDIT SERVICES  
**CHAIRPERSON** MARK THOMPSON

**DAIRY CATTLE**  
**DAIRY, BOER AND PYGMY GOATS**  
**SMALL ANIMALS**  
**ENTRIES ARE DUE** OCTOBER 4, 2021, 4 PM

**BEEF, SHEEP AND SWINE**  
**ENTRIES ARE DUE** OCTOBER 11, 2021, 4 PM

**ENTRY FORMS MUST BE TURNED INTO LIVESTOCK OFFICE**

## CHAMPION OF EXCELLENCE JUDGING SCORECARD

<b><u>CRITERIA</u></b>	<b><u>POSSIBLE POINTS</u></b>
<b>FAIR PARTICIPATION</b>	
PARTICIPATION IN SHOWMANSHIP	10 PTS
PARTICIPATION IN MARKET CLASSES	10 PTS
PARTICIPATION IN BREEDING CLASSES	20 PTS
<b>EXHIBITOR INTERVIEW</b>	60 PTS
<b>PRESENTATION OF ANIMAL</b>	
SCIENCE KNOWLEDGE AND SKILL	25 PTS
RECORD BOOK REVIEW	5 PTS
<b>LEADERSHIP INSIDE AND OUTSIDE</b>	
4-H OR FFA	15 PTS
<b>ACTIVITIES HELPING OTHERS INSIDE AND OUTSIDE</b>	
4-H OR FFA	15 PTS
<hr style="width: 20%; margin: 10px auto;"/>	
160 POINTS TOTAL	

Each entrant will be asked to provide a list specifying their 2018 Big Fresno Fair class placings. Forms for this list are available in the Livestock Office and will be given to the entrant when their application is completed and turned in.

Placings will be evaluated on a sweepstakes scoring basis, i.e.:

1st place	5 points
2nd place	4 points
3rd place	3 points
4th place	2 points
5th place to final	
Eligible placing	1 point

**Champions and Reserve Champions to be listed.**

## **CHAMPION OF EXCELLENCE RULES**

1. There will be one winner from each livestock species group exhibiting at The Big Fresno Fair.
2. Any 4-H or FFA member in good standing may apply for this award program. The signature of their 4-H Leader or FFA Advisor proves their good standing in the club or chapter.
3. Each entrant will be granted an interview. The interview panel will consist of a minimum of three individuals selected by the donor. Please see the Judging Scorecard for the basic criteria.
4. Each entrant will be scored in all areas on the scorecard. The interview panel reserves the right to conduct additional interviews or visit as needed for clarifications or ties. All ties will be broken by the panel. The panel may request input from Junior Livestock Auction Committee members, staff, advisors, and leaders.
5. Each entrant should bring a current Record Book to the interview. This will be reviewed by the panel; 4-H and FFA experts may be called upon to assist as needed.
6. 4-H and FFA members exhibiting livestock at the 2021 Big Fresno Fair may submit entry forms. All members are encouraged to apply. Supreme Champion and Reserve Supreme Champion Market Animal exhibitors will be prohibited from participating in this award program.
7. Entry form for all species must be received no later than 4 PM on Monday, October 4, 2021 AND October 11, 2021 in The Big Fresno Fair Livestock Office.
8. Interviews will be conducted in a designated spot at the livestock barn at The Big Fresno Fair. There will be a Sign-Up Sheet in the Livestock Office. Students must sign up for designated date and time for interviews. Students failing to report for interviews will be disqualified. See fair dates and times for interview schedules.
9. All judging, scoring, and related matters are strictly confidential and will not be shared with any person. The panel may, at their discretion, share reasons for choosing a particular Champion, but not in any comparison to another entrant. Entry form must include a brief (500 words or less) description/discussion of the entrant's fair project. The description should start with the beginning of the project (purchase or birth of the animals) and continue up to and including the experiences preparing for the fair.



# ACTIVITIES WEEK I

## PEEWEE SHOWMANSHIP

OPEN TO RESIDENTS OF FRESNO COUNTY

SEPTEMBER 29, 2021  
SHOW DATE & TIME

All ENTRIES are due.  
OCTOBER 7, 2021

5PM Dairy Calves-FOLLOWING DAIRY SHOW  
5:30PM Dairy Goats-FOLLOWING DAIRY GOAT SHOW

ENTRY FEE \$12.00

ENTER ONLINE at [www.FresnoFair.com](http://www.FresnoFair.com)

DIVISION 1596 PEEWEE SHOWMANSHIP 3 YRS. - 5 YRS.  
(Ages as of 8/1/21)

DIVISION 1597 PEEWEE SHOWMANSHIP 6 YRS. - 9 YRS.  
(Ages as of 8/1/21)

### Class

1. Dairy Calves  
(Only Dairy Calves 3-6 months and under can be used)
2. Dairy Goats

DIVISION 1389 PEE WEE RABBITS WILL SHOW AT THE  
CONCLUSION OF THE BREEDING RABBIT SHOW

### Class.

1. Rabbits

### RULES

1. Exhibitors must provide their own animal.
2. Only Dairy Calves 3 months and under can be used.
3. Photo Release Form must be completed.
4. Anyone entered in this contest must wear closed-toe shoes.
5. No 4-H uniforms allowed.

## SMALL ANIMAL ROUND ROBIN

First place Showmanship winners in Rabbits, Poultry, Dogs and Pygmy Goats are eligible to compete in Small Animal Round Robin. All contestants will show same species simultaneously. There will be no dogs present. There will be a written skills and knowledge test given for the dog section. Skills test may be used in place of specific species.

SHOW DATE & TIME TBA

DIVISION 1388 SMALL ANIMAL ROUND ROBIN  
Class

1. Junior 4-H/Independent Exhibitors
2. Intermediate 4-H/Independent Exhibitors
3. Senior 4-H/Independent Exhibitors
4. Novice FFA/Independent Exhibitors
5. Freshman FFA/Independent Exhibitors
6. Senior FFA/Independent Exhibitors

DEPENDING ON COVID-19 RESTRICTIONS GROUP CLASSES  
ARE SUBJECT TO CANCELLATION.

All judging, scoring, and related matters are strictly  
confidential and will not be shared with any person.

# SPECIAL CLASS

## BRED BY EXHIBITOR

SPECIAL CLASS  
PRE-ENTRY  
ENTRY FEE

Required  
12.00

BUCKLES WILL ONLY BE AWARDED TO MARKET  
SPONSORED BY REEDLEY AREA AG BOOSTERS

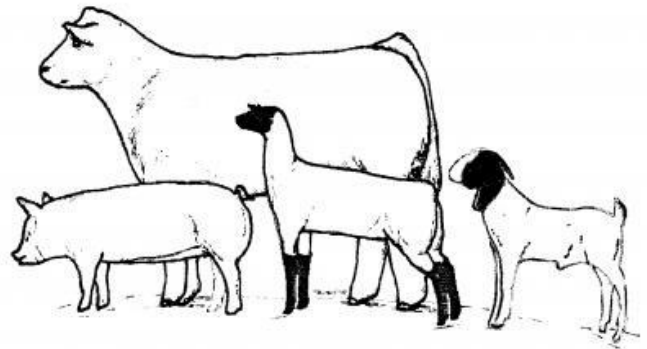
THESE BUCKLES ARE FOR THE MARKET DIVISION ONLY.  
WINNERS FROM 4H/INDEPENDENT AND FFA/INDEPENDENT  
WILL COMPETE AGAINST ONE ANOTHER FOR THESE BUCKLES.  
ONLY ONE BUCKLE WILL BE GIVEN PER SPECIES.

### 4-H/INDEPENDENT, FFA/INDEPENDENT

Awards will be given to the highest placing animal that has been bred by the exhibitor. To qualify as bred by exhibitor, the exhibitor must have owned the dam of the animal at the time the dam was bred. Awards will be given in the market divisions of each species exhibited; Beef, Dairy, Swine, Sheep, Dairy Goats, Boer Goats and Pygmy Goats.

DIVISION 1606 MARKET ANIMAL BRED BY EXHIBITOR  
Class

1. Market Beef
2. Market Boer Goat
3. Replacement Boer Doe
4. Market Dairy Goat
5. Replacement Dairy Doe
6. Replacement Dairy Heifer
7. Market Sheep
8. Market Swine
9. Pygmy Goat Doe



# ACTIVITIES

## WEEK II

### CAROLEE BOELE MEMORIAL LADS & LADIES LEAD

ENTRY FEE \$12.00  
PRE ENTRY REQUIRED

**\*\*NOT A COSTUME CLASS\*\***

ENTRIES DUE: Tuesday August 31, 2021 BY 4 PM

**\*\*NO LATE ENTRIES ACCEPTED\*\***

Commentaries need to be emailed to  
[livestock@fresnofair.com](mailto:livestock@fresnofair.com) no later than  
Monday October 4, 2021

Carolee Boele Memorial Lads and Ladies Lead

SEE SHEEP DIVISON FOR RULES AND REGULATIONS

### BEEF BEAUS AND BELLES

ENTRY FEE \$12.00  
PRE ENTRY REQUIRED

**\*\*NOT A COSTUME CLASS\*\***

ENTRIES DUE: Tuesday August 31, 2021 BY 4 PM

**\*\*NO LATE ENTRIES ACCEPTED\*\***

COMMENTARIES DUE: Commentaries need to be  
emailed to [livestock@fresnofair.com](mailto:livestock@fresnofair.com) no later than  
Monday October 4, 2021

SEE BEEF DIVISON FOR RULES AND REGULATIONS

### PEEWEE SHEEP SHOWMANSHIP

ENTRY FEE \$15.00  
PRE ENTRY REQUIRED

OPEN TO RESIDENTS OF FRESNO COUNTY

All ENTRIES are due.  
Tuesday August 31, 2021

SHOW DATE & TIME

DIVISION 1596 PEEWEE SHOWMANSHIP 3 YRS. - 5 YRS.  
(Ages as of 8/1/2021)

DIVISION 1597 PEEWEE SHOWMANSHIP 6 YRS. - 9 YRS.  
(Ages as of 8/1/2021)

Class

- 03. Meat Goat
- 04. Sheep
- 05. Swine \*\*\* NEW

(Swine peewee age 3-5 showman must furnish their own feeder pig. Feeders may weigh up to 50 pounds. ) Peewee ages 6-9 may borrow a hog that is already on the grounds.

FOR INFORMATION CONTACT:

THE BIG FRESNO FAIR  
LIVESTOCK DEPARTMENT  
(559) 570-3443

### CAROLEE BOELE SCHOLARSHIP FUND BARNYARD OLYMPICS

12 Noon  
1 PM

Registration  
Barnyard Olympics

ENTRY FEE \$12.00 Per Team (2 exhibitors per team)

Games will be held in the Main Show Arena.  
GAMES TO BE ANNOUNCED DAY OF THE EVENT

AWARDS: BUCKLES

First place Sr. Team 14-19 yrs.  
First Place Jr. Team 9-13 yrs.

FOR INFORMATION CONTACT: THE BIG FRESNO FAIR  
LIVESTOCK DEPARTMENT  
(559) 570-3443

Week One winners and Week two winners will compete with  
special games for the buckles  
Special games will be announced for the Championship

### LARGE ANIMAL ROUND ROBIN

SHOW DATE & TIME TBA due to State Restrictions

All first place showmanship winners in Beef, Dairy, Sheep, Swine, Dairy Goats and Boer/Meat Goats are eligible to compete in Large Animal Round Robin. All contestants will show the same species simultaneously. If an exhibitor should win more than one species of showmanship, the second place winner from that class which the exhibitor chooses will be eligible to compete.

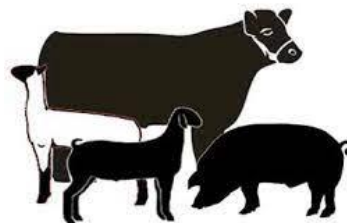
DON LAUB FFA AWARD  
GARY FISCHER 4-H AWARD

DIVISION 1604 LARGE ANIMAL ROUND ROBIN  
Class

1. Junior 4-H/Independent Exhibitors
2. Intermediate 4-H/Independent Exhibitors
3. Senior 4-H/Independent Exhibitors
4. Novice FFA/Independent Exhibitors
5. Freshman and Sophomore FFA/Independent Exhibitors
6. Junior, Senior and Graduate FFA/Independent Exhibitors

All judging, scoring, and related matters are strictly  
confidential and will not be shared with any person.

**\*ALL JUDGES DECISIONS ARE FINAL\***



# JUNIOR LIVESTOCK

## MARKET BEEF RULES FFA, 4-H, AND INDEPENDENT

1. It is the intent of the Division of Fairs and Expositions that the quality standards established for market animals be maintained. Therefore, classification will be subject to change in the event there are changes made in federal grading.

2. A Brand Inspection or a Bill of Sale must be made out to the exhibitor, showing a minimum of 120 days ownership, or a signed statement that the animal was calved from the exhibitor's cow and was raised by the exhibitor.

**Cattle originating from a different state must have the following:**

Proof of Ownership consists of: A Brand Inspection Certificate in the exhibitor's name must accompany cattle originating from states requiring brand inspection.

Cattle originating from states not requiring brand inspection must be accompanied by a health certificate or original Bill of Sale in the exhibitor's name. If a Bill of Sale is used it must include the origin and destination, exhibitor's and seller's names, addresses, and phone numbers, and the animal's physical description including any identifying markings. EID Tags must be left in the ear if they are listed on the brand inspection.

(California Food and Ag Code 21702, 21703).

3. All market animals will be judged as follows:

English — must be Angus, Hereford or Shorthorn;

All Other Color — all breeds or crossbreds which are predominantly red, white, or any other non-black color;

Black — for all breeds or crossbreds which are black in color or have any black markings.

4. Market Beef may be a steer or heifer. TWO Market beef per exhibitor may be weighed and shown.

5. A Grand Champion and Reserve Grand Champion will be chosen from FFA/Independent, 4-H/Independent. THESE FOUR (4) ANIMALS MUST SELL IN THE JUNIOR LIVESTOCK AUCTION, AND ARE A TERMINAL SALE ONLY. NO LIVE PICK-UPS.

### MARKET BEEF SCORECARD

#### MARKET READY

Market Beef projected to have sufficient fat deposition to meet the marbling specifications for USDA Prime, Choice, or Select + Quality Grades.

#### NOT MARKET READY

Market Beef lacking evidence of sufficient fat deposition to produce a desirable consumer product. Steers projected to grade USDA Select or lower.

### MARKET BEEF DIVISION

ENTRIES DUE: Monday, MAY 31 2021,

Entries close at midnight

PICTURES OF STEERS WITH EARTAGS REQUIRED ON ENTRY

ENTRY FEE PER ANIMAL

\$12.00

PRE-ENTRY

REQUIRED

Date of Show:

WEDNESDAY, OCTOBER 13, 2021 AT 8 AM

**\*CHAMPIONS WILL BE SELECTED AT 6:30 PM.\***

**NEW -ALL CHAMPIONS WILL BE ALLOWED TO  
REWASH FOR CHAMPION DRIVE**

### DANISH SYSTEM OF JUDGING

<u>PLACE</u>		<u>SALE ELIGIBILITY</u>
PURPLE	Group I	Sale
BLUE	Group II	Sale
RED	Group III	No Sale
WHITE	Group IV	No Sale

**DIVISION 1615 FFA/INDEPENDENT SINGLE MARKET ANIMALS**

**DIVISION 1616 4-H/INDEPENDENT SINGLE MARKET ANIMALS**

**ENTER MARKET BEEF BY DIVISION ONLY.  
CLASSES WILL BE BROKEN DOWN BY WEIGHT.**

Market Weight 1,000 to 1,400 lbs.

Market Weight 1,401 lbs. and up

**DIVISION 1606 BRED BY EXHIBITOR**

PRE-ENTRY

Required

Class

2. Market Beef

**DIVISION 1617 FFA CHAPTER GROUP (MARKET)**

**DIVISION 1618 4-H CLUB GROUP (MARKET)**

**CHAPTER/CLUB GROUPS Only one Group per  
Chapter/Club**

PRE-ENTRY

None

Class

1. Three animals that have been shown in Market Divisions, owned by members of one chapter/club. No chapter/club member may enter more than two animals.

\*Group classes may be canceled due to county tier restrictions.

**ALL SPECIES MUST STAY WITH IN  
THE BARN. NO ANIMALS MAY BE  
WALKED OUTSIDE OF THE BARN AREA**

**FEEDER BEEF**  
**ENTRIES DUE: Tuesday August 31, 2021 BY 4 PM**

**ENTRY FEE PER ANIMAL \$12.00**

**4-H, FFA AND INDEPENDENTS COMBINED**

**AMERICAN SYSTEM OF JUDGING**  
**CASH AWARDS OFFERED PER CLASS**

CHAMPION FEEDER CALF & RESERVE CHAMPION FEEDER CALF

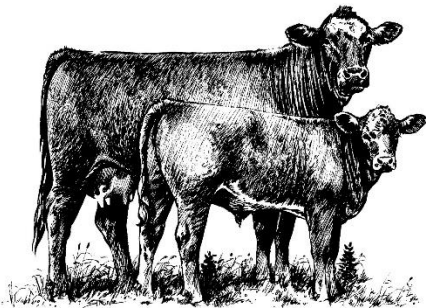
Due to weight variances, entries should be made by division number only.

**DIVISION 1619 - SINGLE FEEDER ANIMALS**  
**CLASSES WILL BE BROKEN DOWN BY WEIGHT**  
 Steer/heifer Weights 400 lbs. - 999 lbs.

**NUMBER OF CHUTES ALLOWED PER HEAD PER**  
**CLUB/CHAPTER**  
**7 CHUTES MAXIMUM**

1-5	head	1 chute
6-10	head	2 chutes
11-15	head	3 chutes
16-20	head	4 chutes
21-30	head	5 chutes
31-40	head	6 chutes
41+	head	7 chutes

**Chute Fee: \$ 15.00**



Cow calf pairs may be shown. No pens will be provided for nursing cow/ calf pairs. Calves must be halter broken and tied while on the fairgrounds. If calves are under two months old please contact the livestock office in order to accommodate these animals.

**ALL SPECIES MUST STAY WITH IN  
 THE BARN. NO ANIMALS MAY BE  
 WALKED OUTSIDE OF THE BARN AREA.**

**REGISTERED PUREBRED BREEDING**  
**ANIMALS ENTRIES DUE: TUESDAY, AUGUST 31, 2021**

**ENTRY FEE PER ANIMAL \$12.00**

REGISTERED BREEDING CLASSES WITH SINGLE ENTRIES  
 MAY BE COMBINED AT THE DESCRETION OF THE  
 JUDGE.

**CASH AWARDS OFFERED PER CLASS**

<u>PLACE</u>	<u>AWARD</u>
1 <sup>st</sup> Place	\$45.00
2 <sup>nd</sup> Place	\$35.00
3 <sup>rd</sup> Place	\$25.00

**BEEF CATTLE.** All females 24 months of age or older at the beginning day of the fair must: (a) have a calf at side; OR (b) show obvious signs of pregnancy; OR (c) have a veterinarian's certificate of pregnancy.

**DIVISION 1609 REGISTERED BULLS**

Class

- |                          |                       |
|--------------------------|-----------------------|
| 1. Junior or Senior Calf | 09/01/2020-05/10/2021 |
| 2. Yearling              | 09/01/2019-08/31/2020 |

**CHAMPION AND RESERVE CHAMPION REGISTERED BULL**

**DIVISION 1610 REGISTERED HEIFER**

**DIVISION 1611 GRADE/UNREGISTERED FEMALES**

(Classes may be broken by breed if three of the same breed are entered in one class.)

**CLASS**

- |  |                          |
|--|--------------------------|
| 1. Junior Calf                         | 01/01/2021 - 05/30/2021* |
| 2. Senior Calf                         | 09/01/2020 - 12/31/2020  |
| 3. Summer Yearling                     | 05/01/2020 - 08/31/2020  |
| 4. Junior Yearling                     | 01/01/2020 - 04/30/2020  |
| 5. Senior Yearling & 2 yr. old females | 03/01/2019 - 12/31/2019  |
| 6. Cow Calf Pair                       | Before 03/01/2019        |

**CHAMPION AND RESERVE CHAMPION REGISTERED HEIFER  
 CHAMPION AND RESERVE GRADE FEMALE**

Registered and Grade Breeding females will compete for overall Supreme Female award. (Buckle)

**DIVISION 1606**

**PRE-ENTRY**

**ENTRY FEE**

**Class**

1. Breeding Beef

**BRED BY EXHIBITOR**

Required

None

**CHAPTER/CLUB GROUPS (ONLY ONE PER CHAPTER/CLUB)**

**DIVISION 1612** FFA CHAPTER GROUP (BREEDING)

**DIVISION 1613** 4-H GROUP (BREEDING)

Class 1

Three animals that have been shown in breeding division, owned by members of the one chapter, or club. No member may enter more than two animals.

**Group classes subject to change with Covid-19 restrictions**

## BEEF CATTLE SHOWMANSHIP

**ENTRY FEE PER ANIMAL                      \$ 10.00**

WEDNESDAY, October 13, 2021 AT 8:00 am

**Showmanship classes will be judged during Market Classes. Exhibitors must pre enter. Exhibitors will be given exhibitor numbers to wear in the market classes. Only exhibitors selected by the judge will be admitted into the showmanship final round.**

**\*Rule 30, Page 1C DFA State Rule2:**

Animals shown in showmanship must be owned (or leased for horses) by the exhibitor, entered by the exhibitor and shown in an appropriate market, breeding/conformation or performance class. If the exhibitor has a market animal that does not meet the weight requirements and as a result may not show in an individual market class, the exhibitor may use this animal for showmanship if and only if this animal is the only animal the exhibitor has brought to the Fair.

**SHOWMANSHIP**  
**CASH AWARDS OFFERED PER CLASS**  
**4-H, FFA, INDEPENDENT**  
**CASH AWARDS OFFERED PER CLASS**

<u>PLACE</u>	<u>AWARD</u>
1 <sup>ST</sup> Place	\$25.00
2 <sup>nd</sup> Place	\$20.00
3 <sup>rd</sup> Place	\$15.00

## FFA/INDEPENDENT SHOWMANSHIP

**ORDER OF JUDGING**

Senior/Graduate  
Freshman/Sophomore  
Novice

**DIVISION 1679    **JUNIOR, SENIOR AND GRADUATE SHOWMANSHIP****

This Division is open to all Junior, Senior and Graduate FFA/Independent members.

**DIVISION 1680    **FRESHMAN/SOPHOMORE SHOWMANSHIP****

This Division is open to all FFA/Independent Freshman and sophomores.

**DIVISION 1681    **NOVICE SHOWMANSHIP****

This Division is open to Novice first time showmen only in each species. A novice showman is one who has never shown an animal in that particular species, including any other organization such as 4-H or Independent at the time of entry.

**CLASS**

**1.    BEEF CATTLE**

## 4-H/INDEPENDENT SHOWMANSHIP

**ORDER OF JUDGING**

Senior  
Intermediate  
Junior

**DIVISION 1682    **SENIOR SHOWMANSHIP****  
Age 14 and up

**DIVISION 1683    **INTERMEDIATE SHOWMANSHIP****  
Ages 11-13

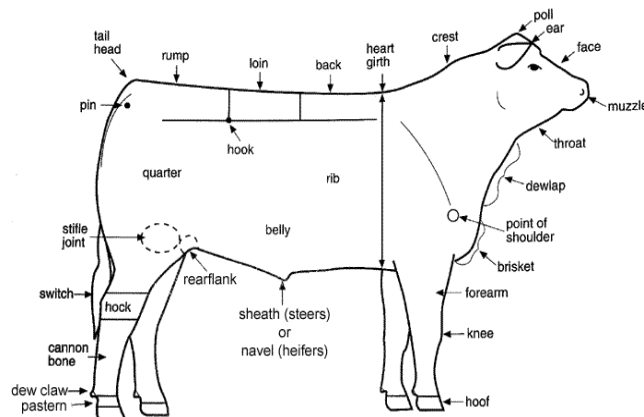
**DIVISION 1684    **JUNIOR SHOWMANSHIP****  
(Ages 9-10)

Must be 9 years old on or before December 31, 2018.

**CLASS**

**1.    BEEF CATTLE**

**Educational information only**



***Types of Showmanship Terms/Questions that may be asked***

**ALL SPECIES MUST STAY WITH IN THE BARN. NO ANIMALS MAY BE WALKED OUTSIDE OF THE BARN AREA**

Please visit [www.fresnofair.com](http://www.fresnofair.com) and look in the Forms link to find the fillable contracts. New faster way to complete and upload contracts

## BEEF BEAUS AND BELLES

ENTRY FEE \$12.00  
PRE ENTRY REQUIRED

ENTRIES ARE DUE, Tuesday August 31, 2021 BY 4 PM

COMMENTARIES DUE: Emailed [livestock@fresnofair.com](mailto:livestock@fresnofair.com)  
 no later than, Monday October 4, 2021

\*\*NO LATE ENTRIES ACCEPTED\*\*

### DIVISION 1602 BEEF BEAUS AND BELLES

- Class
1. 9-13 yrs. Beaus & Belles Lead
  2. 14-19 yrs. Beaus & Belles Lead

#### LEAD CLASS SCORECARD

<b>GENERAL APPEARANCE</b>	<b>50%</b>
Coordination of ensemble (use of wool)	
Suitability of style	
Presentation of garment	
Coordination of outfit for sheep	
Eye appeal	
<b>SHOWMANSHIP</b>	<b>30%</b>
Ability to lead	
Handling of Cattle	
Appearance of animal	
<b>PERSONAL PRESENTATION</b>	<b>20%</b>
Poise	
Gracefulness	
<b>TOTAL</b>	<b>100%</b>

### RULES

1. Entrant must be an exhibitor in the Junior Department at The Big Fresno Fair and must be the OWNER OF THE ANIMAL used in the Lead Class and shown in a Junior Livestock Department class at THE 2021 BIG FRESNO FAIR.
2. Entries are open to all members of 4-H, FFA, and Independent. Participants must be showing at the fair and registered as one of the above with this fair to be eligible.
3. Entrants must furnish their own outfit, which must be made up of 50% leather. (i.e.: leather vest, leather jacket, boots, skirts and other leather clothing.) The Leather must be cowhide leather. Entries will be judged on mode of dress selected, which must be appropriate, attractive and lend versatility and charm to the class. The exhibitor must furnish a picture of the garment tag that lists the type of leather in the garment. This tag can also be referred to as the care label. It must stay connected to the garment during competition.
4. Beaus and Belles contestants must provide labels of leather used in the outfit provided with a commentary.
5. Outfits must not have been used at prior Fresno Fair Beaus and Belles Classes by the exhibitor or another exhibitor.
6. Outfits do not have to be made by the entrant.
7. Entrants must also provide their commentary sheet of 200 WORDS OR LESS based on the qualifying event. The commentary must be typed (double-spaced) and written in "THIRD PERSON", and is due in the Livestock Office Monday October 4, 2021 by 7PM.

8. Beef Cattle must be shown on a halter. Cattle must be entered in a breeding or market class to be eligible. Animals may be shown Blow and Show or Fitted.

\*\*NOT A COSTUME CLASS\*\*

#### CASH AWARDS OFFERED PER CLASS

FIRST PLACE WILL RECEIVE A BELT BUCKLE

<u>PLACE</u>	<u>AWARD</u>
1 <sup>st</sup> Place	\$25.00
2 <sup>nd</sup> Place	\$20.00
3 <sup>rd</sup> Place	\$15.00

ALL DATES AND TIMES ARE SUBJECT TO CHANGE



**REMEMBER: THERE IS NO EATING  
OR SMOKING IN THE BARN**



# DAIRY CATTLE RULES FFA/INDEPENDENT, 4-H/INDEPENDENT

1. All animals entered in this division must be capable of being led by the exhibitor or it will be released by the livestock superintendent upon arrival to ensure the safety of the public and exhibitors.
2. NO NURSE COWS WILL BE PERMITTED ON FAIRGROUNDS. ALL CALVES MUST BE WEANED.  
If a nursing calf is shown, it must be nursing its own dam and the dam must be shown in her own age class.
3. All cattle transported from out of the State of California must be accompanied by a Health Certificate, a Brand Inspection and Bill of Sale.
4. All bulls are to be double tied. ALL BULLS 1 YEAR AND OLDER WILL BE SHOWN WITH NOSE LEADS.
5. DAIRY BLOCKING CHUTE RULES  
All chutes must be in stalls (2 stalls per chute).  
**NO BLOCKING CHUTES WILL BE ALLOWED IN THE AISLES.** Failure to comply will result in loss of cash awards and removal of chute from grounds.

**CHUTE FEE \$12.00**  
**NUMBER OF CHUTES ALLOWED**  
**PER HEAD PER CLUB/CHAPTER**  
**7 CHUTES MAXIMUM**

1-5	head	1 chute
6-10	head	2 chutes
11-15	head	3 chutes
16-20	head	4 chutes
21-30	head	5 chutes
31-40	head	6 chutes
41+	head	7 chutes

6. **DAIRY MILK BARN USAGE**  
Please arrange your milking time with the MILKER upon arrival on the grounds. If you arrive late for your assigned time, you will milk last. No cattle will be taken into the barn by fair staff. The exhibitor must be at the barn to milk DURING A MILKING HOURS.  
(Please let the milk parlor attendant know if you will need to be milked later than final milking of the dairy cows in the exhibit. All waste will be cleaned up by the exhibitors. Do not leave feces in the milk barn if you milk your own cows?)
7. The Livestock Department has the option to combine classes with less than 5 entries. Awards will be offered per division

**REGISTERED PUREBRED  
DAIRY BREEDING CATTLE  
ENTRIES DUE: TUESDAY, AUGUST 31, 2021**

**ENTRY FEE PER ANIMAL: \$12.00**

## 4-H, FFA, INDEPENDENTS COMBINED

Registered and Grade Breeding Heifer Show will follow the Showmanship classes. The Milk Cow (Registered & Grade) Show will be at 12 PM, October 7, 2021.  
Dairy Prospect/Replacement Heifer Show on  
Thursday, October 7, 2021 @ 2 PM

## 4-H, FFA, AND INDEPENDENTS COMBINED

### CASH AWARDS OFFERED PER CLASS

<u>PLACE</u>	<u>AWARD</u>
1 <sup>st</sup> Place	\$40.00
2 <sup>nd</sup> Place	\$35.00
3 <sup>rd</sup> Place	\$30.00

ONLY BREEDS IN RECOGNIZED BREED ASSOCIATIONS ARE ELIGIBLE. BIRTHDATE AND CLASS SAME FOR ALL BREEDS.

**DIVISION 1621 HOLSTEIN-FRIESIAN**  
**DIVISION 1622 ALL OTHER RECOGNIZED BREEDS**

### **BULLS**

Classes	Date of Birth
1. Junior or Senior Calf	09/01/2020 - 05/10/2021

**Champion Bull** **Ribbon only**  
**Reserve Champion Bull** **Ribbon only**  
**Supreme and Reserve Supreme Champion Bulls**

Classes	Date of Birth
2. Junior Calf	03/01/2021 - 05/10/2021
3. Winter Calf	12/01/2020 - 02/28/2021
4. Senior Calf	09/01/2020 - 11/30/2020
5. Summer Yearling	05/01/2020 - 08/30/2020
6. Junior Yearling	01/01/2020 - 04/31/2020
7. Senior Yearling	09/01/2019 - 02/29/2020

### **FEMALES**

**Jr. Champion Female** **Ribbon only**  
**Reserve Jr. Champion Female** **Ribbon only**

### **DIVISION 1622 MILK COW CLASSES**

7. Two Years & under 3	09/01/2018 - 08/31/2019
8. Three Years & under 4	09/01/2017 - 08/31/2018
9. Four Years & under 5	09/01/2016 - 08/31/2017
10. Aged Cow	Prior to Sept 1, 2016

NEW\*\*\*The Milk Cow (Registered & Grade) Show will follow the Showmanship classes on or about 12:00 PM on Thursday, October 7, 2021.

**Sr. Champion Female**  
**Reserve Sr. Champion Female**

**Grand Champion Female**  
**Reserve Grand Champion Female**

### **GROUPS**

**All animals must be owned by one exhibitor and have been shown in their age appropriate class.**

13. **YOUNG HERD:** One bull and two females, all senior yearlings or younger.
14. **GET OF SIRE:** Three animals get of one sire. Not more than two can be bulls. Each exhibitor is limited to one entry sired by the same bull. Sire registration number must be on entry form.
15. **PRODUCE OF DAM:** To consist of two animals, any age, either sex, the produce of one cow. The dam must be identified by registration number.
16. **BEST OF 3 FEMALES**

## GRADE OR UNREGISTERED DAIRY CATTLE

**ENTRY FEE PER ANIMAL:** \$ 12.00  
Registered and Grade Breeding Heifer Show will follow the Showmanship classes. The Milk Cow (Registered & Grade) Show will be at 12 PM, October 7, 2021.  
Dairy Prospect/Replacement Heifer Show on Thursday, October 7, 2021 @ 2 PM

### 4-H, FFA, AND INDEPENDENTS COMBINED

#### CASH AWARDS OFFERED PER CLASS

<u>PLACE</u>	<u>AWARD</u>
1 <sup>st</sup> Place	\$40.00
2 <sup>nd</sup> Place	\$35.00
3 <sup>rd</sup> Place	\$30.00

### RULES

1. Senior and Junior yearlings in milk must be shown with two year olds.
2. By the signature as owner on an entry form, the exhibitor also certifies that the sire of each animal entered in the following divisions for grade animals was registered.
3. A permanent ear tag or tattoo number is required.
4. Animals which have been registered by a purebred association cannot be entered in this Division.

**Only breeds in recognized Breed Associations are eligible.**

### FEMALES

Classes	Date of Birth
2. Junior Calf	03/01/2021 - 05/10/2021
3. Winter Calf	12/01/2020 - 02/28/2021
4. Senior Calf	09/01/2020 - 11/30/2020
5. Summer Yearling	05/01/2020 - 08/30/2020
6. Junior Yearling	01/01/2020 - 04/31/2020
7. Senior Yearling	09/01/2019 - 02/29/2020

<b>Jr. Champion Female</b>	<b>Ribbon only</b>
<b>Reserve Jr. Champion Female</b>	<b>Ribbon only</b>

### DIVISION 1622 MILK COW CLASSES

7. Two Years & under 3	09/01/2018 - 08/31/2019
8. Three Years & under 4	09/01/2017 - 08/31/2018
9. Four Years & under 5	09/01/2016 - 08/31/2017
10. Aged Cow	Prior to Sept 1, 2016

**Senior Champion, Reserve Senior Champion  
Grand Champion, Reserve Grand Champion**

### DIVISION 1606 BRED BY EXHIBITOR

<u>PRE-ENTRY</u>	Required
<u>ENTRY FEE</u>	None
Class	
3. Dairy - Registered and Grade	

### CHAPTER/CLUB GROUPS

<u>ENTRY FEE</u>	None
------------------	------

### DIVISION 1624 FFA CHAPTER GROUP (DAIRY)

### DIVISION 1625 4-H CLUB GROUP (DAIRY)

Class 1

(Five animals that have been shown in either Grade or Registered divisions, owned by members of one chapter or club. No chapter or club member may have more than two animals.)

**Supreme and Reserve Supreme Champion Female**

## Sample Questions for Dairy Cattle

### Showmanship Terms/Questions

Heifer: a female calf who has not given birth  
Cow: a female who has given birth  
Bull: an intact male Steer: a castrated male  
Calf: a young bovine Freemartin  
Heifer: a female calf that is born as a twin with a male and is sterile as a result of exposure to masculinizing hormones produced by the male. Parturition: the act of giving birth

1. What is the gestation period of a dairy cow?  
a. 9 months
2. Which breed produces the most pounds per day of milk?  
a. Holstein. How many pounds per day of milk does a Holstein produce?  
a. 54 – 80 lbs. per day
4. Which breed produces the highest butterfat content?  
a. Jersey
5. A Brown Swiss heifer would most likely be judged on...?  
a. The conformation of her feet and legs, her potential udder conformation, and the balance and distance of her hook bones and pin bones
6. The standard length of lactation of a dairy cow is?  
a. 305 days
7. A dairy heifer should be first bred at what age?  
a. 20 – 24 months
8. The first milk secreted after parturition is colostrum. Colostrum is vital because it contains...?  
a. Antibodies
9. An inflammation of the mammary gland results in...?  
a. Mastitis
10. The average estrus cycle length in dairy cows is?  
A. 21 days
11. Name a reproductive disease that causes abortions.  
a. Vibriosis, leptospirosis, or brucellosis
12. The calving interval of a dairy cow should be no longer than...? a. 12 ½ months
13. Dairy cattle should not have access to silage 2-3 hours prior to milking. Why? a. It may cause milk to have an off flavor
14. For milk let down to occur, what hormone is stimulated by the calf or milker? a. Oxytocin
15. The average cow reaches maturity and maximum milk production at what age? a. 6 years
16. What causes mastitic?  
a. Trauma to the udder, strains of streptococcus bacteria, or dirty milking equipment
17. Dairy calves are typically weaned at what age?  
a. 6 – 8 weeks
18. Low fiber rations can often cause a “DA” in early lactation dairy cows. What does “DA” stand for?  
a. Displaced Abomasum
19. Which class of milk is to be marketed for drinking (fluid milk)? a. Class 1
20. What are the top milk producing states?  
a. California, Wisconsin, New York, Idaho, Pennsylvania

## 2021 JUNIOR DAIRY PROSPECT/ REPLACEMENT HEIFER AUCTION RULES

SATURDAY, OCTOBER 09, 2021

AUCTION BEGINS at 6:30 PM

**These dates are subject to change with Covid-19 Restrictions!!**

1. Any valid Fresno County resident or member of a Fresno County 4-H Club, FFA Chapter or Independent exhibitor participating in the Dairy Replacement Heifer Project may be eligible to sell their animal, provided all rules of sale participation are met.
2. **Exhibitors may enter MULTIPLE Prospect and Replacement Heifers. However, THEY may only exhibit (2) two Dairy Prospect Heifers AND (2) two Dairy Replacement Heifers. ONLY ONE ANIMAL MAY BE SOLD.**
3. Ownership for Dairy Prospect and Replacement Heifers is a minimum of 4 months. For the purpose of the 2021 Big Fresno Fair, this date is **May 31, 2021. Your Bill of Sale or Brand Inspection must reflect this date or earlier. These dates are reflecting changes due to the COVID-19.**
4. **Entries/Contracts/pictures/bill of sale for Dairy Prospect and Replacement Heifers are due Monday, May 31, 2021.**
5. **The inspection to be announced**
6. **All heifers must be halter broke and must be capable of being removed from the trailer for inspection. Do not bring a heifer if she is not capable of being controlled outside the trailer. Heifers brought to inspection that have not been trained to lead sufficiently will not be inspected.**
7. The sire of the heifer must have been a registered bull and be of the same breed as the dam.
8. Heifers must be bred to a **registered bull** of the same breed either by natural service or artificial insemination. **AI BRED HEIFERS MUST HAVE A SERVICE SIRE CODE.**
9. Heifers may be registered or grade.
10. Heifers sold as registered must have registration papers (IN THE EXHIBITORS NAME) with signed transfer on file at the Livestock Office **no later than October 1, 2021.** These papers will be given to the buyer upon payment. Transfer will be the buyer's responsibility. These heifers require milk production records on their dam.
11. Replacement Heifers must have been born between August 1, 2019, and December 31, 2019, for the 2021 Replacement Heifer Show and Auction. Prospect Dairy Replacement Heifers must have been born between September 1, 2020, and December 31, 2020 for the 2021 Prospect Dairy Replacement Heifer Show and Auction.
12. Replacement Heifers must freshen within 75 days of the sale. A heifer may calve up to 2 weeks prior to the opening day of the fair. For the 2021 fair, the earliest possible calving date is September 22, 2021. If calving does take place prior to the fair, the heifer must be inspected at the time of calving by a member of the Replacement Heifer Committee within 6 to 12 hours after calving. The heifer must be moved to a dairy for proper handling until the opening day of the fair. The fetus must be at least 8 ½ months old. Any fetus younger than this will be considered an abortion. All calves born to Dairy Replacement Heifers must be delivered to buyers within one day of the Auction.
13. Heifers must be completely dehorned, deteated, tattooed and vaccinated for Brucellosis. All tattoos must be legible at inspection. If a tattoo is not present a USDA - RFID tag must be in the ear at inspection along with the clip. Scurs will be evaluated at inspection. It will be the determination of the veterinarian rather the scurs should be removed or will be allowed. **The veterinarian will make the final decision.**
14. All Heifers will be examined for soundness, including a pregnancy check by the Fresno Fair veterinarian. Causes for sifting include, but are not limited to, blind quarters and extra teats. Those not meeting the requirements of the auction will be eliminated from the Dairy Prospect/Replacement Heifer class and will be transferred to an appropriate Heifer class for the purpose of judging.
15. **NO REPLACEMENTS WILL BE ALLOWED AFTER 60 DAYS PRIOR TO THE OPENING DAY OF THE BIG FRESNO FAIR.** Heifers sifted at the Fair Inspection will automatically go to the Heifer class out of the Replacement Heifer class. For the 2021 fair, this date will be August 7, 2021.
16. If the Heifer cannot be bred, or any other similar problems arise, a Replacement Heifer may be purchased with the approval of the Dairy Replacement Heifer Committee.
17. Only blue and red ribbon Heifers will be allowed to sell in the Prospect/Replacement Heifer Auction.
18. Prospect Dairy Replacement Heifers may be eligible but not required to sell.
19. Heifers will be given a neck chain and number.
20. **HEIFERS WILL BE PAINT BRANDED BEFORE THE SALE.**
21. The Big Fresno Fair Heifer Auction will not be held liable for the following conditions after the gavel hits and the auctioneer declares the heifer sold: mastitis, calf mortality, heifer mortality, lameness, inability to produce milk, or illness. All heifers entered in the sale have been examined twice during the contract period. All Buyers buy at their own risk. The fair will not change price or reimburse buyers for heifers that are unable to produce milk.

Calves may be moved to an authorized calf handlers until heifer is sold. All calves must be photographed at the time of inspection by committee members.

**Replacement Heifer Calves born at the fair will be allowed to be taken to a reputable dairymen's facility for proper care upon the discretion of the Livestock Superintendent and Replacement Heifer Committee. A BFF RFID TAG WILL BE PLACED IN THE HEIFER & CALVES EAR BY COMMITTEE MEMBER AT THE TIME OF INSPECTION, IN ORDER TO ENSURE GENETIC MATCH TO HEIFER.**

**ALL DECISIONS OF THE HEIFER INSPECTION COMMITTEE ARE FINAL!**

## PROSPECT/REPLACEMENT HEIFERS

ENTRIES DUE: Monday, MAY 31, 2021

**ENTRY FEE PER ANIMAL \$12.00**

Prospect and Replacement Heifer class size will be limited to 17 head per class or broken evenly by the Committee. NO substitutions will be allowed.

### PLEASE NOTE:

\*\*\* All 4-H, FFA, and Independent Dairy Replacement Heifers will show together.

DANISH SYSTEM OF JUDGING WILL BE USED IN REPLACEMENT HEIFER SELECTION

<u>PLACE</u>		<u>SALE ELIGIBILITY</u>
BLUE	Group I	Sale
RED	Group II	Sale
WHITE	Group III	No Sale

## DAIRY SHOWMANSHIP

**ENTRY FEE PER ANIMAL \$ 10.00**

Entry must have been shown in feeder, market or breeding class.

ENTRIES DUE: TUESDAY, AUGUST 31, 2021

Date of show: October 7, 2021 at 8:00 am

CDFA State Rule; Rule 30, Page 12:

Livestock shown in showmanship must be owned by the exhibitor, entered by exhibitor and shown in an appropriate market, breeding, or performance class. If the exhibitor has a market animal that is weight sifted and as a result may not show in an individual market class, the exhibitor may use this animal for showmanship if and only if this animal is the only animal the exhibitor has brought to the Fair.

<u>SHOWMANSHIP</u>	
<u>CASH AWARDS OFFERED PER CLASS</u>	
<u>4-H, FFA, INDEPENDENT</u>	
<u>PLACE</u>	<u>AWARD</u>
1 <sup>st</sup> Place	\$25.00
2 <sup>nd</sup> Place	\$20.00
3 <sup>rd</sup> Place	\$10.00
4 <sup>th</sup> Place	\$15.00

## FFA/INDEPENDENT SHOWMANSHIP

### DIVISION 1679 JUNIOR, SENIOR AND GRADUATE SHOWMANSHIP

This Division is open to all Junior, Senior and Graduate FFA/Independent members.

### DIVISION 1680 FRESHMAN/SOPHOMORES SHOWMANSHIP

This Division is open to all FFA/Independent Freshman and sophomores.

DIVISION 1626 DAIRY PROSPECT REPLACEMENT  
Prospect Heifer ages must be between:  
08/01/2020-12/31/2020

### CHAMPION DAIRY PROSPECT REPLACEMENT HEIFER RESERVE CHAMPION PROSPECT REPLACEMENT HEIFER

ALL HEIFERS WILL BE SHOWN TOGETHER. THERE WILL BE ONE CHAMPION AND ONE RESERVE CHAMPION. HEIFERS WILL SELL ACCORDING TO CLASS PLACING

### DIVISION 1627 DAIRY REPLACEMENT HEIFERS

Heifer - Ages must be between 08/01/2019 - 12/31/2019  
Classes

1. Holstein
2. Jersey

### CHAMPION REPLACEMENT HEIFER FFA/4-H/INDEPENDENT RESERVE CHAMPION REPLACEMENT HEIFER FFA/4-H/INDEPENDENT

Please visit [www.fresnofair.com](http://www.fresnofair.com) and look in the Forms link to find the fillable contracts. New faster way to complete and upload contracts.

### DIVISION 1681 NOVICE SHOWMANSHIP

This Division is open to Novice first time showmen only in each species. A novice showman is one who has never shown an animal in that particular species, including any other organization such as 4-H or Independent at time of entry.

### ORDER OF JUDGING CLASS

Senior/Graduate  
Freshman/Sophomore  
Novice

### 2. Dairy Cattle

## 4-H/INDEPENDENT SHOWMANSHIP

### DIVISION 1682 SENIOR SHOWMANSHIP Age 14 and up

Must be 14 years old on or before December 31, 2020.

### DIVISION 1683 INTERMEDIATE SHOWMANSHIP Age 11-13

Must be 11 years old on or before December 31, 2020.

### DIVISION 1684 JUNIOR SHOWMANSHIP (Ages 9-10)

Must be 9 years old on or before December 31, 2020.

### ORDER OF JUDGING

1<sup>st</sup> Senior  
2<sup>nd</sup> Intermediate  
3<sup>rd</sup> Junior

### CLASS

### 2 Dairy Cattle

**ALL SPECIES MUST STAY WITH IN THE BARN. NO ANIMALS MAY BE WALKED OUTSIDE OF THE BARN AREA**

**DAIRY GOATS**  
**FFA, 4-H, INDEPENDENTS COMBINED**

**REGISTERED DAIRY GOATS**

**ENTRY FEE PER CLASS**

**\$10.00**

PRE-ENTRY

REQUIRED

**ENTRIES DUE: TUESDAY, AUGUST 31, 2021**

*Date of show: WEDNESDAY, October 6, 2021 FOLLOWING  
JUNIOR DAIRY GOAT SHOWMANSHIP*

**FITTING STANDS \$5.00**

NUMBER OF STANDS ALLOWED  
PER HEAD PER CLUB/CHAPTER

7 STANDS MAXIMUM

1-5	head	1 stand
6-10	head	2 stands
11-15	head	3 stands
16-20	head	4 stands

Dairy goat Exhibitors are allowed 1milking stand in addition to the above fitting stands

**ADGA RULES SHALL GOVERN**

**RULES**

1. Animals with a "Certificate of Registry" (BLUE BORDER) issued by the American Dairy Goat Association are eligible for Divisions 1650 -1651.  
Recorded Grades must have "Certificate of Pedigree" (BROWN BORDER) issued by ADGA, for Division 1652.
2. The order of the show is subject to change. The show order may change due to issues of milking goats out.

**DIVISION 1650** JR. DIVISION REGISTERED LA MANCHA  
**DIVISION 1651** JR. DIVISION REGISTERED ALL OTHER  
RECOGNIZED BREEDS - SPECIFY BREED  
**DIVISION 1652** JR. DIVISION RECORDED GRADES

**JR. REGISTERED DAIRY DOES**

**CLASS**

Date of Birth

- |                        |                               |
|------------------------|-------------------------------|
| 1. Milking Yearling    | 01/01/2020 - 12/31/2020       |
| 2. 2 years and under   | 01/01/2019 - 12/31/2019       |
| 3. 3 years and 4 years | 01/01/2018 - 12/31/2018       |
| 4. 5 years and older   | Prior to 01/01/2016 and later |

**Best Udder**

**Senior Champion Doe**

**Reserve Senior Champion Doe**

- |                     |                         |
|---------------------|-------------------------|
| 5. Junior Kid       | 04/16/2021 - 08/01/2021 |
| 6. Intermediate Kid | 03/01/2021 - 04/15/2021 |
| 7. Senior Kid       | 01/01/2021 - 02/28/2021 |
| 8. Dry Yearling     | 01/01/2020 - 12/31/2020 |

**Junior Champion Doe**

**Reserve Junior Champion Doe**

**Champion Doe**  
**Reserve Champion Doe**  
**Best Udder of Show**  
**Best Doe of Show**

**CASH AWARDS OFFERED PER CLASS**

<u>PLACE</u>	<u>AWARD</u>
Best Doe in Show	Buckle
Best Udder	Bucket
1 <sup>st</sup> Place	\$20.00
2 <sup>nd</sup> Place	\$16.00
3 <sup>rd</sup> Place	\$14.00

**BREEDING GROUP CLASSES**

**ALL ANIMALS MUST BE OWNED AND EXHIBITED  
BY ONE EXHIBITOR AND ENTERED AS INDIVIDUALS**  
\*WILL SHOW AT THE END OF THE 4-H DIVISION OR FFA DIVISIONS\*

9. Get of Sire: Three does sired by same buck, at least one to be a yearling or older in milk.  
One entry by same buck per exhibitor.
10. Produce of Dam: Three does produce of same doe.  
One entry by same dam per exhibitor.
11. Best Three Females: Three does of any age need not be related but of same breed. One entry per exhibitor.
12. Dam/Daughter: One doe and one of her daughters, any age.  
Daughters must be bred by exhibitor. One entry per exhibitor per dam.

**DIVISION 1606 BRED BY EXHIBITOR**

**PRE-ENTRY**

**ENTRY FEE**

Class

7. Dairy Goats

**REQUIRED**

**None**

**CHAPTER/CLUB GROUPS** Only one Group per Chapter/Club

**ENTRY FEE**

**None**

**DIVISION 1653 CHAPTER/CLUB GROUP**

Class

1. FFA: Five does of any age. Must be owned by at least three exhibitors. Must have been shown in breeding classes.
2. 4-H: Five does of any age. Must be owned by at least three exhibitors. Must have been shown in breeding classes.

**DAIRY GOAT SHOWMANSHIP**

**ENTRY FEE PER CLASS**

**\$10.00**

PRE-ENTRY

REQUIRED

Date of show:

Wednesday, October 6, 2021 AT 8:00 am

**ENTRIES DUE:**

**AUGUST 31, 2021**

**Rule 30, Page 12 CDFA State Rule:**

Livestock shown in showmanship must be owned by the exhibitor, entered by exhibitor and shown in an appropriate market, breeding, or performance class. If the exhibitor has a market animal that is weight sifted and as a result may not show in an individual market class, the exhibitor may use this animal for showmanship if and only if this animal is the only animal the exhibitor has brought to the Fair. No exhibitor shall attach any items that may distract a judge's attention. I.e. bells or other noise making devices. No halters may be used.

## FFA/INDEPENDENT SHOWMANSHIP

Entry must have been shown in breeding class.  
Wethers may not be shown in Dairy Goat Showmanship

**DIVISION 1679 JUNIOR, SENIOR AND GRADUATE SHOWMANSHIP**  
This Division is open to all Junior, Senior and Graduate FFA/Independent members.

**DIVISION 1680 FRESHMAN/SOPHOMORES SHOWMANSHIP**  
This Division is open to all FFA/Independent Freshman and Sophomores.

**DIVISION 1681 NOVICE SHOWMANSHIP**  
This Division is open to Novice first time showmen only in each species. A novice showman is one who has never shown an animal in that particular species, including any other organization such as 4-H or Independent at time of entry.

**ORDER OF JUDGING** Senior/Graduate  
Freshman/Sophomore  
Novice

**CLASS**  
5. DAIRY GOAT

## INDEPENDENT SHOWMANSHIP

Entry must have been shown in breeding class.  
Wethers may not be shown in Dairy Goat Showmanship

Entry must have been shown in breeding class.

**DIVISION 1682 SENIOR SHOWMANSHIP**  
(Age 14 and up)  
Must be 14 years old on or before December 31, 2020.

**DIVISION 1683 INTERMEDIATE SHOWMANSHIP**  
(Ages 11-13)  
Must be 11 years old on or before December 31, 2020.

**DIVISION 1684 JUNIOR SHOWMANSHIP**  
(Ages 9-10)  
Must be 9 years old on or before December 31, 2020.

**CLASS**  
5 DAIRY GOAT

**ORDER OF JUDGING** Senior  
Intermediate  
Junior

### CASH AWARDS OFFERED PER CLASS

PLACE	AWARD
1 <sup>st</sup> Place	\$25.00
2 <sup>nd</sup> Place	\$20.00
3 <sup>rd</sup> Place	\$10.00

## Showmanship Terms/Questions Kid:

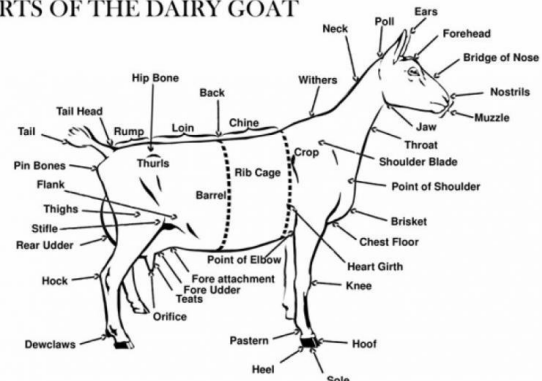
Kid: A baby goat

Doe: an adult female goat

Buck: an adult male goat Dam: a mother of a goat Sire: a father of a goat

1. What do we call the act of giving birth? a. Kidding, freshening, parturition
2. What is the "first milk" of a doe that is secreted after kidding called? a. Colostrum
3. Why do kids need colostrum? a. Antibodies and laxative
4. What is the technical term for the afterbirth? a. Placenta
5. What is the gestation period for a dairy goat?  
a. 5 months or 105 days
6. What is the average length between heats? a. 21 days
7. What is the description of a dairy goat's ancestry called? a. Pedigree
8. Why is a stainless steel container the best for milking? a. Easy to sanitize
9. What is the normal position of a kid at birth? a. Front feet and nose first
10. Where are LaMancha goats tattooed? a. In the tail web
11. After milking, should the milk be cooled quickly or slowly?  
a. Quickly
12. Washing the doe's udder stimulates what? a. Milk letdown
13. What do the letters ADGA stand for? a. American Dairy Goat Association
14. What is a sable? a. A colored Saanen
15. How soon after kidding does peak milk production occur?  
a. 6 – 8 weeks
16. What problem is caused by feeding too much calcium in the diet in late pregnancy? a. Milk fever
17. When does milk fever generally occur? a. After kidding
18. How many days are in a standard lactation for a dairy goat?  
a. 305 days
19. What are the average pounds of milk per day that a dairy goat produces? a. 6 pounds per day
20. What is a dry doe? a. A doe that is not milking
21. What is chevre? a. Cheese made from goats milk
22. What disease is defined as "inflammation of the mammary gland cause by specific disease-producing organisms?" a. Mastitis
23. What are the four major parts of the dairy goat does on the AGDA scorecard? a. General appearance, dairy character, body capacity and mammary system
24. What is the most important factor for determining when to breed a doe for the first time? a. Weight, at least 75 lbs.
25. What are the top dairy goat producing states? a. Wisconsin, California, Texas, Iowa, Pennsylvania

### PARTS OF THE DAIRY GOAT





## JUNIOR DAIRY DOE REPLACEMENT AUCTION RULES

1. Ownership for dairy replacement doe is a minimum of 90 days. For the purpose of the 2021 Big Fresno Fair, this date is July 6, 2021. **Your Bill of Sale must reflect this date or earlier.**
2. **Saturday, July 10, 2021, 8 AM – 10 AM**, at The Big Fresno Fair Carolee Boele Livestock Pavilion, Replacement Doe Inspection for Junior and Senior Does and CAE tests for age appropriate does only. **APPOINTMENT MUST BE MADE BY JULY 6, 2021.**

**All Dairy Replacement Doe photos, COPY OF REGISTRATION PAPERS, contracts and entries are due ON LINE WITH ENTRIES. NO PAPERS WILL BE ACCEPTED AT INSPECTION.**

3. Does must be registered or recorded grade, with papers from ADGA.
4. Does sold must have registration papers with signed transfer in the Livestock Office by October 6, 2021. These papers will be given to the buyer along with a Bill of Sale after payment has been made. Transfer will be the buyer's responsibility.
5. Does must have been born between December 1, 2020, and March 31, 2021, for the 2021 Dairy Goat Doe Replacement sale. Senior Does; 12/1/2020 - 6/30/2020. Junior Does; 7/1/2020 - 3/31/2021.

**DOES MUST NEVER HAVE PREVIOUSLY FRESHENED.**

6. **The exhibitor must expose the senior does to a buck prior to the fair. (Junior Does need not be exposed.)** Does will be examined by the Fresno Fair veterinarian to determine if there is a pregnancy prior to the sale. The buck must be registered with ADGA and the seller must provide a signed service memo or lease contract page.
7. Does must be completely dehorned and tattooed.
8. If any doe tests positive for CAE, you can re-test immediately under the supervision of the Fresno Fair veterinarian. Does will be replaced if a positive test result is consistent.
9. A doe may be replaced prior to fair entry, upon the discretion of the Replacement Doe Committee. Additional documentation may be required as evidence for the replacement. Last day for replacement is Friday, August 17, 2021
10. Milk records are optional but highly recommended.

## DAIRY REPLACEMENT DOES

<b><u>ENTRY FEE PER ANIMAL</u></b>	<b>\$12.00</b>
<b><u>PRE-ENTRY</u></b>	Required

### CLASSES WILL FOLLOWING JUNIOR DAIRY GOAT SHOWMANSHIP

#### **DANISH SYSTEM OF JUDGING**

<b><u>PLACE</u></b>		<b><u>SALE ELIGIBILITY</u></b>
BLUE	Group I	Sale
RED	Group II	Sale
WHITE	Group III	No Sale

**DIVISION 1659** FFA/INDEPENDENT SINGLE DAIRY  
REPLACEMENT DOE

**DIVISION 1660** 4-H/INDEPENDENT SINGLE DAIRY  
REPLACEMENT DOE

#### **REPLACEMENT DOE**

Class

- |                |                         |
|----------------|-------------------------|
| 1. Senior Does | 1/01/2020 - 12/31/2020  |
| 2. Junior Does | 01/01/2021 - 03/31/2021 |

**CHAMPION  
RESERVE CHAMPION**

**SUPREME CHAMPION  
RESERVE SUPREME CHAMPION**

<b><u>DIVISION 1606</u></b>	<b>BRED BY EXHIBITOR</b>
<b><u>PRE-ENTRY</u></b>	Required
<b><u>ENTRY FEE</u></b>	None

Class

8. Replacement Does

**ALL SPECIES MUST STAY WITH IN  
THE BARN. NO ANIMALS MAY BE  
WALKED OUTSIDE OF THE BARN AREA.**

Please visit [www.fresnofair.com](http://www.fresnofair.com) and look in  
the **Forms link** to find the fillable contracts.  
New faster way to complete and upload  
contracts

## BOER BREEDING GOATS

**ENTRY FEE PER ANIMAL** \$10.00  
**PRE-ENTRY** Required

MATURE DOES MAY BE SHOWN ON HALTERS BUT NO PRONGED COLLARS WILL BE ALLOWED HALTERS MAY BE BLACK, BROWN NYLON OR LEATHER.  
NO ROPE HALTERS

### AMERICAN SYSTEM OF JUDGING

#### CASH AWARDS OFFERED PER CLASS

PLACE	AWARD
1 <sup>st</sup> Place	\$20.00
2 <sup>nd</sup> Place	\$19.00
3 <sup>rd</sup> Place	\$17.00

**DIVISION 1667** REGISTERED BOER GOATS - DOES ONLY  
**DIVISION 1668** GRADE AND PERCENTAGE BOER GOATS ALL DOES SHOW TOGETHER - DOES ONLY

#### Class

- |                  |                        |
|------------------|------------------------|
| 1. Mature Does   | Born before 01/01/2020 |
| 2. Yearling Does | 01/01/20 - 12/31/2020  |
| 3. Kids          | From 01/01/2021        |

#### CHAMPION AND RESERVE CHAMPION BOER DOE

**DIVISION 1606** BRED BY EXHIBITOR  
**PRE-ENTRY** Required  
**ENTRY FEE** None

#### Class

9. Breeding Boer Goats

## BOER GOAT RULES

### FFA/INDEPENDENT, 4-H/INDEPENDENT

MARKET GOAT KIDS MUST BE DEHORND; SCURS MAY BE ALLOWED NO LONGER THAN 2 INCHES. Market does cannot show udder development.

#### IDENTIFICATION

Ear notches are not considered a goat I.D. method. GOATS MUST HAVE SCRAPIE IDENTIFICATION IN THE THEIR EAR AT ALL TIMES WHEN ON THE FAIRGROUNDS. GOATS WILL NOT BE ALLOWED IN THE SHOW RING WITHOUT PROPER SCRAPIE IDENTIFICATION. REGISTRATION NUMBERS MAY NOT BE USED AS FLOCK NUMBERS. Flock numbers and breeder's initial name or association prefix shall be on regular and practical tags attached to the ear or tattooed in the ear for yearlings and goats bred by the exhibitor.

**GOATS MUST HAVE KID TEETH IF SHOWN IN MARKET CLASSES. TEETH WILL BE CHECKED AT WEIGH IN**

## BOER/BOER X- MARKET GOATS

**ENTRY FEE PER ANIMAL** \$12.00  
**PRE-ENTRY** Required

NO PRONGED COLLARS WILL BE ALLOWED IN MARKET CLASSES/ Halters will be allowed only if they are BLACK, BROWN NYLON, OR leather show halters.

NO ROPE HALTERS

Date of show:

WEDNESDAY, October 6, 2021

**LIMIT: 4 HEAD MAY BE ENTERED BY EXHIBITOR  
ONLY 2 MAY WEIGH IN AND SHOW**

#### DANISH SYSTEM OF JUDGING

PLACE		SALE ELIGIBILITY
PURPLE	Group I	Sale
BLUE	Group II	Sale
RED	Group III	No Sale
WHITE	Group IV	No Sale

**DIVISION 1669.1** FFA/INDEPENDENT MARKET GOAT  
**DIVISION 1670.1** 4-H/INDEPENDENT MARKET GOAT

Wether or doe kids 60 to 105 lbs.  
(Super-Heavy weight) 106 lbs. and above.

**Resale champions will only pay to 105 pounds**

FFA/INDEPENDENT GRAND CHAMPION  
FFA/INDEPENDENT RESERVE GRAND CHAMPION  
4-H/INDEPENDENT GRAND CHAMPION  
4-H/INDEPENDENT RESERVE GRAND CHAMPION

**ALL MARKET CHAMPIONS WILL BE SELECTED AT  
6:30 PM ON MARKET SHOW DAY  
IN THE MIDDLE SHOW ARENA**

*For group classes 4-H division/FFA division classes will show at the end of their perspective divisions.*

**DIVISION 1606.1** BRED BY EXHIBITOR

**PRE-ENTRY** Required  
**ENTRY FEE** None

#### Class

- |      |                 |
|------|-----------------|
| 10   | FFA Market Goat |
| 10.1 | 4-H Market Goat |

**DIVISION 1671.1** PEN OF TWO

#### Class

1. Pen of two Market Goats owned by one exhibitor shown in a Market Class.

**DIVISION 1672.1** FFA CHAPTER GROUP MARKET GOATS

**DIVISION 1673.1** 4-H CLUB GROUP MARKET GOATS  
Class

1. Three animals that have been shown in a market division.  
No more than two to be owned by one exhibitor.

**CHAPTER/CLUB GROUPS** Only one Group per Chapter/Club  
**ENTRY FEE** None

## BOER FEEDER GOATS

### 4-H, FFA AND INDEPENDENTS COMBINED

ENTRY FEE PER ANIMAL \$12.00  
PRE-ENTRY Required

Date of Show  
**WEDNESDAY, October 13, 2021**  
 Feeders will show after Market classes

DIVISION 1674 FEEDER GOATS  
 FEEDERS CHAMPION AND RESERVE

Feeder Goats 59 lbs. and below.

## BOER GOAT SHOWMANSHIP

CLASS ENTRY \$10.00  
PER FEE P PRE-ENTRY Required

*NEW: Exhibitors may only enter in one showmanship  
 class per species.*

Date of show: October 7, 2021 AT 8:00 am

Rule 30, Page 12 CDFA State Rule

*Livestock shown in showmanship must be owned by the exhibitor, entered by exhibitor and shown in an appropriate market, breeding, or performance class. If the exhibitor has a market animal that is weight sifted and as a result may not show in an individual market class, the exhibitor may use this animal for showmanship if and only if this animal is the only animal the exhibitor has brought to the Fair.*

### FFA, 4-H, INDEPENDENT CASH AWARDS OFFERED PER CLASS

<u>PLACE</u>	<u>AWARD</u>
1 <sup>st</sup> Place	\$25.00
2 <sup>nd</sup> Place	\$20.00
3 <sup>rd</sup> Place	\$10.00

Entry must have been shown in feeder, market or breeding class.

## BOER GOAT FFA/INDEPENDENT SHOWMANSHIP

DIVISION 1679 JUNIOR, SENIOR AND GRADUATE  
 SHOWMANSHIP  
 This Division is open to all Junior, Senior and Graduate FFA/Independent members.

DIVISION 1680 FRESHMAN/SOPHOMORES SHOWMANSHIP  
 This Division is open to all FFA/Independent Freshman and Sophomores.

DIVISION 1681 NOVICE SHOWMANSHIP  
 This Division is open to Novice first time showmen only in each species. A novice showman is one who has never shown an animal in that particular species, including any other organization such as 4-H or Independent at time of entry.

CLASS  
 7. MEAT GOATS

ORDER OF JUDGING Senior  
 Freshman  
 Novice

## BOER GOAT 4-H/INDEPENDENT SHOWMANSHIP

DIVISION 1682 SENIOR SHOWMANSHIP  
 Ages 14 and up  
 Must be 14 years old on or before December 31, 2020.

DIVISION 1683 INTERMEDIATE SHOWMANSHIP  
 Ages 11-13  
 Must be 11 years old on or before December 31, 2020.

DIVISION 1684 JUNIOR SHOWMANSHIP  
 (Ages 9-10)  
 Must be 9 years old on or before December 31, 2020.

CLASS  
 7. MEAT GOATS

ORDER OF JUDGING Senior/Graduate  
 Freshman/Sophomore  
 Novice

### FITTING STANDS \$10.00

NUMBER OF STANDS ALLOWED  
 PER HEAD PER CLUB/CHAPTER  
 7 STANDS MAXIMUM

1-5	head	1 stand
6-10	head	2 stands
11-15	head	3 stands
16-20	head	4 stands
21-30	head	5 stands
31-40	head	6 stands
41+	head	7 stands

## BREEDING PYGMY GOATS

**ENTRY FEE PER ANIMAL**                      **\$ 10.00**  
PRE-ENTRY                                      Required

**Date of show:**  
**THURSDAY, October 7, 2021**  
**FOLLOWING PYGMY GOAT SHOWMANSHIP**  
**4-H, FFA AND INDEPENDENTS COMBINED**

**DIVISION 1675**  
**NPGA SANCTIONED PYGMY GOATS WETHERS**  
Class

- |           |                |
|-----------|----------------|
| 1. Junior | under one year |
| 2. Senior | over one year  |

**CHAMPION AND RESERVE CHAMPION**

**JUNIOR DOES** (ages as of opening of the Fair)  
Class

- |                                   |                |
|-----------------------------------|----------------|
| 3. Junior Kids                    | 0 - 3 months   |
| 4. Intermediate Kids              | 4 - 7 months   |
| 5. Senior Kids                    | 8 - 11 months  |
| 6. Junior Yearling                | 12 - 17 months |
| 7. Senior Yearling (NEVER KIDDED) | 18 - 23 months |

**JUNIOR CHAMPION AND RESERVE JUNIOR CHAMPION DOE**

**SENIOR DOES**

- |                                    |                |
|------------------------------------|----------------|
| 8. Freshened Yearling (HAS KIDDED) | 12 - 23 months |
| 9. Two years old                   | As of Show     |
| 10. Three years old                | As of Show     |
| 11. Four years and older           | As of Show     |

**SENIOR CHAMPION AND RESERVE SENIOR CHAMPION**  
**GRAND CHAMPION AND RESERVE GRAND CHAMPION**

### **CASH AWARDS OFFERED PER CLASS**

1 <sup>st</sup> Place	\$20.00
2 <sup>nd</sup> Place	\$17.00
3 <sup>rd</sup> Place	\$15.00

### **GROUPS**

**ALL ANIMALS MUST BE OWNED AND EXHIBITED  
BY ONE EXHIBITOR AND ENTERED AS INDIVIDUALS**

12. Junior Get of Sire: Three does, get of one sire. Does to come from the Junior Doe classes.
13. Get of Sire: Three does sired by same buck, at least one to have kidded. One entry by same buck per exhibitor.
14. Best Three Does: Best three does owned and exhibited by one exhibitor.
15. Best pair: Two does owned and exhibited by exhibitor. By Registered Sire.

**ENTRY FEE PER ANIMAL**                      **\$12.00**  
PRE-ENTRY                                      Required

**DIVISION 1676**    **GRADE PYGMY GOATS WETHERS**  
Class

- |           |                |
|-----------|----------------|
| 1. Junior | under one year |
| 2. Senior | over one year  |

**CHAMPION AND RESERVE CHAMPION  
DOES**

**JUNIOR DOES** (ages as of opening of the Fair)  
Class

- |                      |                |
|----------------------|----------------|
| 3. Junior Kids       | 0 - 3 months   |
| 4. Intermediate Kids | 4 - 7 months   |
| 5. Senior Kids       | 8 - 11 months  |
| 6. Junior Yearling   | 12 - 17 months |
| 7. Senior Yearling   | 18 - 23 months |
| (NEVER KIDDED)       |                |

**JUNIOR CHAMPION AND RESERVE JUNIOR CHAMPION DOE**

**SENIOR DOES**

- |                                    |                |
|------------------------------------|----------------|
| Class                              |                |
| 8. Freshened Yearling (HAS KIDDED) | 12 - 23 months |
| 9. Two years old                   | As of Show     |
| 10. Three years old                | As of Show     |
| 11. Four years and older           | As of Show     |

**SENIOR CHAMPION AND RESERVE SENIOR CHAMPION**  
**GRAND CHAMPION AND RESERVE GRAND CHAMPION**

**SPECIAL CLASS**

<b><u>PRE-ENTRY</u></b>	Required
<b><u>ENTRY FEE</u></b>	None

**DIVISION 1606**    **BRED BY EXHIBITOR**

Class  
11. Pygmy Goats

## CHAPTER/CLUB GROUPS Only one Group per Chapter/Club

**PRE ENTRY**                                      None

<b><u>DIVISION 1677</u></b>	<b>FFA CHAPTER GROUP</b>
<b><u>DIVISION 1678</u></b>	<b>4-H CLUB GROUP</b>

Class

1. Three does of any age, need not be related. Must be owned by at least two exhibitors.



## PYGMY GOAT SHOWMANSHIP

### ENTRY FEE PER CLASS

**\$10.00**

### PRE-ENTRY

Required

Entry must have been shown in feeder, market or breeding class.

Date of show:  
October 7, 2021  
Time: 10:00 AM

### Rule 30, Page 12 CDFA State Rule:

*Livestock shown in showmanship must be owned by the exhibitor, entered by exhibitor and shown in an appropriate market, breeding, or performance class. If the exhibitor has a market animal that is weight sifted and as a result may not show in an individual market class, the exhibitor may use this animal for showmanship if and only if this animal is the only animal the exhibitor has brought to the Fair.*

### FFA, 4-H, INDEPENDENT CASH AWARDS OFFERED PER CLASS

<u>PLACE</u>	<u>AWARD</u>
1 <sup>st</sup> Place	\$25.00
2 <sup>nd</sup> Place	\$20.00
3 <sup>rd</sup> Place	\$10.00

## FFA/INDEPENDENT SHOWMANSHIP

**NEW: Exhibitors may only enter in one showmanship class per species.**

### DIVISION 1679 JUNIOR, SENIOR AND GRADUATE SHOWMANSHIP

This Division is open to all Junior, Senior and Graduate FFA/Independent members.

### DIVISION 1680 FRESHMAN/SOPHOMORES SHOWMANSHIP

This Division is open to all FFA/Independent Freshman and Sophomores.

### DIVISION 1681 NOVICE SHOWMANSHIP

This Division is open to Novice first time showmen only in each species. A novice showman is one who has never shown an animal in that particular species, including any other organization such as 4-H or Independent at time of entry.

### Class

6. Pygmy Goats

### ORDER OF JUDGING

Senior  
Freshman  
Novice

## 4-H/INDEPENDENT SHOWMANSHIP

### DIVISION 1682 SENIOR SHOWMANSHIP

Age 14 and up

Must be 14 years old on or before December 31, 2020.

### DIVISION 1683 INTERMEDIATE SHOWMANSHIP

Age 11-13

Must be 11 years old on or before December 31, 2020.

### DIVISION 1684 JUNIOR SHOWMANSHIP

(Ages 9-10)

Must be 9 years old on or before December 31, 2020.

### Class

6. Pygmy Goats

### ORDER OF JUDGING

Senior  
Intermediate  
Junior

**Pygmy Goat History and Origin:** Pygmy goats originated from Africa and gained popularity quickly in the United States. Original name is the Cameroon Dwarf Goats and their pure form is gray coloring, black stockings, and are small in size. Pygmy Goats first recorded importation documentation was from Sweden in 1959. Registration for these animals came into interest in the 1970s and the National Pygmy Goat Association was formed in 1975.

**Pygmy Goat Colors:** Caramel with brown markings can range from white to caramel hairs with a brown undercoat and has brown coloring on legs, face, sides, and face. Caramel with black markings can range from white to caramel hairs with a black undercoat and has black coloring on legs, face, sides, and face. Gray agouti is a mixture of black and white hairs to give a gray look to the coat with darker stockings. Black agouti is solid black with occasional white hairs. Black has solid darker stockings but have white accents on their muzzle, crown, eyes, and ears. Brown agouti is a mixture of brown and white hairs to give a lighter brown color with darker stockings. Solid Black is no light accents on the muzzle, crown, ears, eyes, and tail but can have patches or belly bands between point of shoulder and stifle joint. Black is all black except for white accents on muzzle, crown, eyes, ears, and tail.

**Goat Care:** Best Diet- pygmy goats diet consists of roughage which is grass hay, legume, bark, dry leaves which can supplemented, and grain especially for show goats. Some people feed their goats alfalfa over grass hay but when feeding alfalfa make sure to mainly feed the leaves over the stems since the leaves have a higher protein content. Housing- need at least 8ft by 10ft shed with an elevated sleeping area to get away from rain/wind, fencing at is at least 4ft tall that provides air for goats, room outside of shed to play around, and things for goat to jump on such as logs and ramps. Exercise- pygmy goats need lots of exercise since they are high energy and loveable goats. Need enough room in pen to run around in and have exercise outside of in pen such as walking

**FFA/INDEPENDENT, 4-H/INDEPENDENT  
MARKET SWINE  
PICTURES WITH EARTAGS & NOTCHES REQUIRED**

**ALL HOGS MUST HAVE EAR NOTCHES TO BE ELIGIBLE TO SHOW!!**

THE HARVEST PLANT HAS ASKED THAT ALL MARKET HOGS HAVE ½ INCH OF HAIR GROWTH OR MORE OVER THE ENTIRE BODY. HOGS SHOULD NOT BE SLICK SHEARED, HEAD IS INCLUDED.

**WEIGHT LIMIT: Market Hogs**                      210 to 280 pounds  
    281 and up Disqualified

However hogs weighing 281 to 300 pounds will be allowed to show in a SUPER HEAVY WEIGHT Division following showmanship, but will not be eligible to show in a market class.

**LIMIT: 2 HEAD MARKET SWINE PER EXHIBITOR  
 TO WEIGH IN**

**LIMIT: 2 HEAD MARKET SWINE PER EXHIBITOR**

**A Grand Champion and Reserve Grand Champion will be chosen from FFA/Independents and 4-H/Independents.  
THESE FOUR ANIMALS MUST SELL IN THE JUNIOR LIVESTOCK AUCTION**

**CLASSES WILL BE BROKEN DOWN BY BREED & WEIGHT AFTER  
OFFICIAL WEIGH-IN**

(Five animals that have been shown in Market Division, owned by members of one chapter/club. No chapter or club member may enter more than two animals. May be either barrows or gilts of any breed.)

- ## THESE FOUR ANIMALS MUST SELL IN THE JUNIOR LIVESTOCK AUCTION

<u>PLACE</u>		<u>SALE ELIGIBILITY</u>
PURPLE	Group I	Sale
BLUE	Group II	Sale
RED	Group III	No Sale
WHITE	Group IV	No Sale

<b>MARKET READY</b>	U.S. No. 1 and No. 2 Hogs of average or greater conformation, that are acceptable in leanness, muscularity, and production traits.
<b>NOT MARKET ACCEPTABLE</b>	Any Hog of below average conformation including U.S. No. 3, U.S. No. 4 and Utility Grade Hogs.



## SINGLE FEEDER & SUPER HEAVY WT. SWINE

### ENTRY FEE

\$12.00

### PRE ENTRY

REQUIRED

*Feeder & Super swine will only be allowed on the grounds if they have proper ear notching, and tag/ear tag in the ear. Premise tags may be used as ear tag id. Market hog entry fees will count towards entry fees in this class.*

*Should the hog not make weight?*

*Weight limit has changed!*

### FFA, 4-H, AND INDEPENDENT COMBINED

### THIS IS A DEFAULT CLASS FOR MARKET ENTRIES

### DIVISION 1633 SINGLE FEEDER SWINE

#### Class

1. Feeder Pigs 150-209 lbs. and below
2. Super Heavy weights 281-300

#### CHAMPION AND RESERVE FEEDER

CHAMPION AND RESERVE SUPER HEAVY WT. -THESE ANIMALS ARE NOT ELIGIBLE TO SELL IN THE JUNIOR LIVESTOCK AUCTION.

## BREEDING SWINE

### ENTRY FEE:

\$10.00

### PRE ENTRY

REQUIRED

BREEDING SWINE WILL SHOW AFTER SHOWMANSHIP CLASSES DURING THE SECOND WEEK

Breeding hogs will haul in with all other hog projects, if it is possible breeding stock will be released after the completion of the show.

### \*PLEASE NOTE\*

### FFA/4-H and Independent Combined

### ALL REGISTERED BREEDS AND GRADE ARE SHOWN TOGETHER

### DIVISION 1700 REGISTERED BREEDING SWINE

(MUST HAVE REGISTRATION PAPERS FROM BREED SPECIFIED BREED ASSOCIATIONS TO SHOW IN THIS CLASS)

#### Class

1. Gilt Farrowed April 2021
2. Gilt Farrowed March 2021
3. Gilt Farrowed February 2021
4. Gilt Farrowed January 2021
5. Female Fall July 1-December 31, 2020
6. Female young yearling Jan 1 - June 31, 2020

NOTE: REGISTERED BREEDS AND GRADE HOGS MAY BE COMBINED IF CLASSES ARE LESS THAN 3 IN A CLASS

### DIVISION 1701 GRADE BREEDING SWINE

#### Class

1. Gilt Farrowed April 2021
2. Gilt Farrowed March 2021
3. Gilt Farrowed February 2021
4. Gilt Farrowed January 2021
5. Female Fall July 1-December 31, 2020
6. Female young yearling Jan 1 - June 31, 2020

### CASH AWARDS OFFERED PER CLASS

PLACE	AWARD
1 <sup>ST</sup> Place	\$25.00
2 <sup>nd</sup> Place	\$20.00
3 <sup>rd</sup> Place	\$15.00

## SWINE SHOWMANSHIP

### ENTRY FEE PER CLASS

\$10.00

### PRE ENTRY

REQUIRED

Exhibitors may only enter in one showmanship class per species.

### \*Rule 30, Page 12 CDFA State Rule:

Livestock shown in showmanship must be owned by the exhibitor, entered by exhibitor and shown in an appropriate market, breeding, or performance class. If the exhibitor has a market animal that is weight sifted and as a result may not show in an individual market class, the exhibitor may use this animal for showmanship if and only if this animal is the only animal the exhibitor has brought to the Fair

### FFA, 4-H, INDEPENDENT CASH AWARDS OFFERED PER CLASS

PLACE	AWARD
1 <sup>ST</sup> Place	\$25.00
2 <sup>nd</sup> Place	\$20.00
3 <sup>rd</sup> Place	\$15.00

## FFA/INDEPENDENT SHOWMANSHIP

### DIVISION 1679

#### JUNIOR, SENIOR AND GRADUATE

SHOWMANSHIP - This Division is open to all Junior, Senior and Graduate FFA/Independent members.

### DIVISION 1680

#### FRESHMAN/SOPHOMORES SHOWMANSHIP

This Division is open to all FFA/Independent Freshman and Sophomores.

### DIVISION 1681

#### NOVICE SHOWMANSHIP

This Division is open to Novice first time showmen only in each species. A novice showman is one who has never shown an animal in that particular species, including any other organization such as 4-H or Independent at time of entry.

#### Class

4. Swine

### ORDER OF JUDGING

Senior  
Freshman  
Novice

## 4-H/INDEPENDENT SHOWMANSHIP

### DIVISION 1682 SENIOR SHOWMANSHIP

Age 14 and up

Must be 14 years old on or before December 31, 2020.

### DIVISION 1683 INTERMEDIATE SHOWMANSHIP

Ages 11-13

Must be 11 years old on or before December 31, 2020.

### DIVISION 1684 JUNIOR SHOWMANSHIP

(Ages 9-10)

Must be 9 years old on or before December 31, 2020.

### CLASS

4. SWINE

### ORDER OF JUDGING

Senior  
Intermediate  
Junior

### CDEA Rules

### SWINE

#### Swine Entries from Other States

1. All exhibition swine entering California require of individual identification (ID), an Interstate Certificat Veterinary Inspection (ICVI) obtained within thirty (30) before movement into the state and listing official ID and a California entry permit prior to entry.
2. Acceptable forms of Official Identification include:
  - a. Official Ear tags - A tamper-resistant metal or plastic official identification tag with high retention rate that provides unique identification for individual animals. It must bear the US shield and conform to one of the following numbering systems: National Uniform Ear-tagging System (NUES), Animal Identification Number (AIN) or Premises Identification Number (PIN).
  - b. Ear notches or tattoos (ear or inner flank) if recorded in Purebred Registry Association Board with documentation attached to the ICVI
3. It is unlawful to remove official identification
4. No brucellosis or pseudorabies tests are currently required.

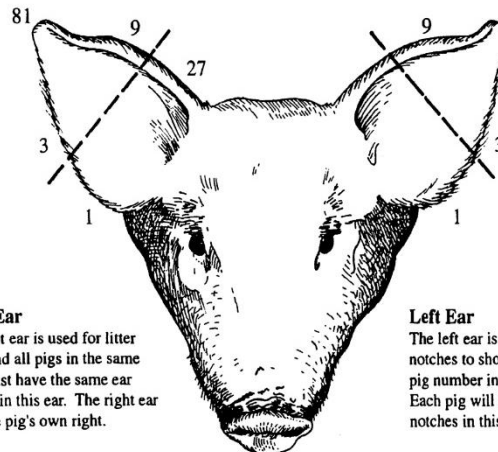
***Exhibitors MUST upload photos and all required documents before submitting entries on line. All documents will be sent electronically.***

**ALL BFF EAR TAGS MUST REMAIN IN THE ANIMAL'S EAR. HARVEST FACILITIES WILL NOT ACCEPT ANIMALS WITHOUT EAR TAGS**

**MANDATORY EAR NOTCHES  
FOR PIGS TO BE ELIGIBLE TO SHOW IN MARKET CLASSES  
ALL HOGS MUST HAVE EAR NOTCHES FROM THE  
BREEDERS.**

### UNIVERSAL EAR NOTCHING SYSTEM

The standard ear notch system will consist of a standard set of numbers and notches located in specific areas.



#### **Right Ear**

The right ear is used for litter mark, and all pigs in the same litter must have the same ear notches in this ear. The right ear is on the pig's own right.

#### **Left Ear**

The left ear is used for notches to show individual pig number in the litter. Each pig will have different notches in this ear.

### **Standard notches in the pig's RIGHT EAR are as follows:**

The # 1 notch located on the bottom of the right, ear near the pig's head  
The # 3 notch located on the bottom side of the right ear close to the tip  
The # 9 located on the outer half of the top of the right ear  
The # 27 notch is located closest to the head on of the right ear  
The largest notch # 81 is located at the tip of the right ear.  
Any combination of the standard notches can occur with no more than two notches of any one number. For example; 3 + 3 = 6 and you will NEVER see 3 + 3 + 3 = 9. This does not exist and neither does 81 + 81. There is only one tip on an ear, so there can only be one 81 notch. The right ear can only have a maximum of 161 (81 + 27 + 27 + 9 + 9 + 3 + 3 + 1 + 1 = 161).

### **Standard notches in the pig's LEFT EAR are as follows:**

The # 1 notch located on the bottom of the left ear near the pig's head  
The # 3 notch located on the bottom side of the left ear close to the tip  
The # 9 notch is located on the outer half of the top of the left ear

## SHEEP RULES

### FFA/INDEPENDENT/ 4-H/INDEPENDENT

**All Lambs must be slick sheared prior to arrival on grounds. Leg wool may be left. Lambs will be inspected for fungus prior to being weighed. Any lamb with active fungus will be removed from the fairgrounds immediately...**

**1. BLOCKING TABLE RULE** ALL blocking tables must be kept out of the aisles. Please use tack pens for fitting and storing feed. No aisles may be blocked to the public when sheep are being fitted.

One blocking table for every 5 head of sheep.  
(Maximum of 5 tables per club or chapter).

#### FITTING STANDS \$10.00

NUMBER OF STANDS ALLOWED  
PER HEAD PER CLUB/CHAPTER

7 STANDS MAXIMUM

1-5	head	1 stand
6-10	head	2 stands
11-15	head	3 stands
16-20	head	4 stands
21-30	head	5 stands
31-40	head	6 stands
41+	head	7 stands

**2. IDENTIFICATION** Ear notches are not considered a sheep I.D. method. **SHEEP MUST HAVE SCRAPIE IDENTIFICATION IN THEIR EAR AT ALL TIMES WHEN ON THE FAIRGROUNDS. SHEEP WILL NOT BE ALLOWED IN THE SHOW RING WITHOUT PROPER SCRAPIE IDENTIFICATION. REGISTRATION NUMBERS MAY NOT BE USED AS FLOCK NUMBERS. Scrapie tags may not be tampered with or colored by the exhibitor.** Flock numbers and breeder's initial name or association prefix shall be on regular and practical tags attached to the ear or tattooed in the ear for yearlings and lambs bred by the exhibitor.

**LAMBS MUST SHOW LAMB TEETH. TEETH WILL BE CHECKED AT WEIGH IN.**

All market lambs must be ear tagged and have both scrapie and RFID in the ears. If a scrapie tag is lost as long as the RFID tag is in place exhibitor may replace the scrapie tag from the breeder. If the RFID tag should be lost Scrapie identification will be used for identification and RFID will be replaced at a charge of \$5.00.

**3. Tail Docking.** To qualify for exhibit market lambs must be docked such that the tail (dock) is healed and can be lifted from the exterior. Lambs that have no dock will not be eligible. 2021 State Rules -- Page 15

#### DANISH SYSTEM OF JUDGING

<u>PLACE</u>		<u>SALE ELIGIBILITY</u>
PURPLE	Group I	Sale
BLUE	Group II	Sale
RED	Group III	No Sale
WHITE	Group IV	No Sale

American system will be used for placing of breeding animals.

After weighing, market lambs may be divided into weight lots within the 100 to 150 pound limitation as desired for convenience of judging.

All market lambs entered in the Fresno Fair must be slick sheared, including the removal of all wool on all parts of the body.

A Grand Champion and Reserve Grand Champion will be chosen from FFA/Independent, 4-H/Independent divisions.  
**THESE FOUR ANIMALS MUST SELL IN THE JUNIOR LIVESTOCK AUCTION**

#### MARKET LAMB SCORECARD

<b>MARKET READY</b>	USDA Prime or Choice quality with 12th rib back fat range .16-.35 average or greater confirmation and cut-ability.
<b>NOT MARKET</b>	Good or Lower Quality Grade with 12th READY rib back fat range <.16 or >.35; under- Finished. Lambs grading USDA good or lower, below average confirmation or cut-ability.

It is the intent of the Division of Fairs and Expositions that the quality standards established for market animals be maintained. Therefore, classifications will be subject to change in the event there are changes made in Federal grading.

All market animals will be judged by predominate breeds in each class as follows: Dorset, Natural Color, Southdown, Suffolk, Hampshire, Specs Cross, and all other meat breeds, all other wool breeds, Crossbreds.

## SHEEP

### FFA/INDEPENDENT-4-H/INDEPENDENT SINGLE MARKET LAMB

**ENTRIES DUE: SUNDAY, August 2, 2021**  
**List of Market Sheep Exhibitors Due July 1, 2021**  
**Ear tags are ordered off this list!!**

**ENTRY FEE PER ANIMAL \$12.00**  
**LIMIT: 5 HEAD OF MARKET LAMBS MAY BE ENTERED.**  
**ONLY 2 MAY WEIGH IN AND SHOW**

**DIVISION 1637 FFA/INDEPENDENT SINGLE MARKET SHEEP**  
**DIVISION 1638 4-H/INDEPENDENT SINGLE MARKET SHEEP**

Whether or ewe lambs 100 to 150 pounds  
Whether or ewe lambs over 150 pounds  
(Super-Heavyweight)  
(Classes will be broken after weigh in)

**ALL MARKET CHAMPIONS WILL BE SELECTED AT 6:30  
PM ON MARKET SHOW DAY  
IN THE MIDDLE SHOW ARENA**

**DIVISION 1606 BRED BY EXHIBITOR**  
**PRE-ENTRY**  
**ENTRY FEE Required**  
Class **\$ 10.00**  
6. FFA Market Sheep  
7. 4-H Market Sheep

**Bred by Exhibitor 4-H champion and FFA Champion will  
compete for an overall champion.**

**DIVISION 1639 - PEN OF TWO****PRE-ENTRY**

Required

**ENTRY FEE**

None

Pen of two Market Lambs owned by one exhibitor shown in a Market class.

**Class**

1. FFA/Independent
2. 4-H/Independent

**DIVISION 1640 FFA CHAPTER GROUP-MARKE****DIVISION 1641 4-H CLUB GROUP-MARKET****CHAPTER/CLUB GROUPS** (Only one Group per Chapter/Club)**PRE ENTRY**

None

**Class**

1. Five animals that have been shown in Market Division, owned by members of one chapter or club. No chapter/ club member may enter more than two animals.

**SINGLE FEEDER LAMBS****ENTRY FEE PER ANIMAL****\$12.00****PRE ENTRY****REQUIRED**

Feeder lambs must have Scrapie Tag in the lamb's ear, when entering the fair grounds

**AMERICAN SYSTEM OF JUDGING WILL BE USED**

(All breeds judged together)

**DIVISION 1642 SINGLE FEEDER LAMBS****Class**

1. Feeder Lambs below 70-99 lbs.

**Champion and Reserve Champion****PRODUCTION EWES****ENTRY FEE****\$10.00****PRE ENTRY****REQUIRED****FFA, 4-H AND INDEPENDENT COMBINED****PLEASE NOTE:**

ALL REGISTERED BREEDS AND GRADE  
WILL SHOW TOGETHER

**4-H, FFA AND INDEPENDENTS COMBINED****CASH AWARDS OFFERED PER CLASS**

<u>PLACE</u>	<u>AWARD</u>
1 <sup>st</sup> Place	\$25.00
2 <sup>nd</sup> Place	\$20.00
3 <sup>rd</sup> Place	\$15.00

Grade, crossbred and registered sheep to be judged strictly on a production ewe basis.

**PRODUCTION EWES****ENTRY FEE PER ANIMAL****\$10.00****PRE ENTRY****REQUIRED****ALL EWES MUST BE WEIGHED IN****CLASSES WILL BE BROKEN BY WEIGHT****All Ewes will be mouthed at the scale for age****All ewes will be weighed in with Market Sheep****DIVISION 1634****Classes**

1. Lamb
2. Pair of ewe lambs:

**Two ewe lambs bred and owned by exhibitor.**

(a) Ewe Lamb Class- All ewes must be carrying all milk teeth at the time of Check-In and Show. Lambs which show either or both of their first pair of permanent incisors will **not be** eligible to be shown in the Ewe Lamb Class. Lambs under six months of age will not be eligible.

**Classes**

3. Yearling
4. Pair of yearling ewes:  
Two yearling ewes bred and owned by exhibitor.

(b) Yearling Class- All ewes must show one or both teeth of first pair of permanent incisors. Ewes which show one or both teeth of the first pair of permanent incisors are eligible to show.

**Champion Production Ewe  
Reserve Champion Production Ewe****PRE-ENTRY**

Required

**ENTRY FEE**

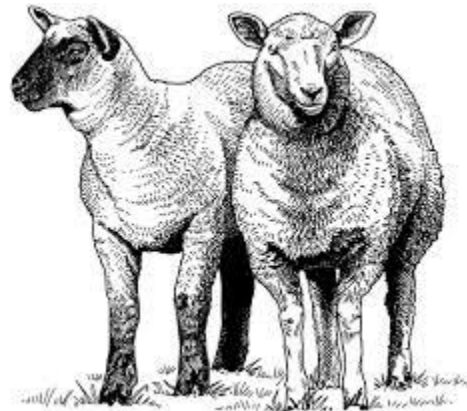
None

**DIVISION 1606 BRED BY EXHIBITOR****Class**

5. Production Sheep

**CHAPTER/CLUB GROUPS** (Only one Group per Chapter/Club)**DIVISION 1635 FFA CHAPTER GROUP BREEDING****DIVISION 1636 4-H CLUB GROUP BREEDING****Class**

1. Five breeding animals owned by members of one chapter or club. No chapter or club member may enter more than two animals.



## SHEEP SHOWMANSHIP

<b>ENTRY FEE PER CLASS</b>	<b>\$10.00</b>
<b>PRE ENTRY</b>	<b>REQUIRED</b>

Entry must have been shown in feeder, market or breeding class

### ***\*Rule 30, Page 12 CDFA State Rule:***

*Livestock shown in showmanship must be owned by the exhibitor, entered by exhibitor and shown in an appropriate market, breeding, or performance class. If the exhibitor has a market animal that is weight sifted and as a result may not show in an individual market class, the exhibitor may use this animal for showmanship if and only if this animal is the only animal the exhibitor has brought to the Fair. No exhibitor shall attach any items that may distract a judge's attention. I.e. bells or other paraphernalia. No halters may be used.*

## FFA/INDEPENDENT SHOWMANSHIP

**DIVISION 1679 JUNIOR, SENIOR AND GRADUATE SHOWMANSHIP**  
This Division is open to all Junior, Senior and Graduate FFA/Independent members.

**DIVISION 1680 FRESHMAN/SOPHOMORES SHOWMANSHIP**  
This Division is open to all FFA/Independent Freshman and Sophomores.

**DIVISION 1681 NOVICE SHOWMANSHIP**  
This Division is open to Novice first time showmen only in each species. A novice showman is one who has never shown an animal in that particular species, including any other organization such as 4-H or Independent at time of entry.

### **CLASS**

3. SHEEP

### **ORDER OF JUDGING**

Senior  
Freshman  
Novice

## 4-H/INDEPENDENT SHOWMANSHIP

**DIVISION 1682 SENIOR SHOWMANSHIP**  
Age 14 and up  
Must be 14 years old on or before December 31, 2020.

**DIVISION 1683 INTERMEDIATE SHOWMANSHIP**  
Age 11-13  
Must be 11 years old on or before December 31, 2020.

**DIVISION 1684 JUNIOR SHOWMANSHIP**  
(Ages 9-10)  
Must be 9 years old on or before December 31, 2020.

### **CLASS**

3. SHEEP

### **ORDER OF JUDGING**

Senior  
Intermediate  
Junior

## CASH AWARDS OFFERED PER CLASS

<u>PLACE</u>	<u>AWARD</u>
1 <sup>st</sup> Place	\$25.00
2 <sup>nd</sup> Place	\$20.00
3 <sup>rd</sup> Place	\$10.00

Sheep: over 1 year of age Lamb: less than one year of age

Ewe: a female sheep Ram: an intact adult male

Wether: a castrated male lamb

Docking: cutting the tails short on lambs

Polled: an animal that naturally lacks horns

Lanolin: the oil called in the fleece of sheep

1. Name some meat breeds. a. Suffolk, Dorset, Southdown, Hampshire
2. Name some wool breeds. a. Merino, Lincoln, Cotswold, Romney
3. Name some dual purpose breeds? a. Dorset, Cheviot, Polypay, Romney, Columbia
4. What disease is the biggest problem in the sheep industry that affects the central nervous system and has no known cure? a. Scrapies
5. What is the purpose of a scrapies tag? a. To trace the (bacteria/sickness) scrapies back to the farm where the lamb was bought.
6. What is rectal prolapse? a. A protruding rectum.
7. What can cause rectal prolapse? a. Overweight, coughing, short dock, too high gain ration, genetics
8. What is the feed conversion ratio for market lambs? a. 7 lbs. feed/1 lb. gain
9. What is the average daily weight gain of a market lamb? a. 0.4 – 0.8 lbs.
10. What is the approximate percent crude protein that growing lambs should be fed? a. 14 – 16%
11. Name three commonly used grains in sheep rations? a. Oats, corn, barley, wheat, rye and sorghum
12. What are three examples of feed ingredients used as a protein source in a ration? a. Linseed Meal, Cottonseed Meal and Soybean Meal
13. What is the normal temperature of a sheep? a. 102.0°F - 103.0°F
14. The gestation period for a ewe is...? a. 5 months
15. How many stomachs does a lamb have? Name them. a. 4: Rumen, Omasum, Abomasum, and Reticulum
16. Name a disease sheep may get. a. Blue tongue, sore moth, tetanus, Enterotoxemia, foot rot
17. Name a common internal parasite. a. Liver flukes, tape worms, large stomach worms, brown stomach worms, stomach hair worms, coccidiosis
18. Name a common external parasite. a. Ticks, maggots, lice, mosquitoes
19. What are the top sheep producing states? a. Texas, California, Colorado, Wyoming and South Dakota
20. The acceptable weight range of an ideal market lamb should be...? a. 115 – 160 lbs.
21. What is the average dressing percent for a market lamb? a. 50-55%
22. What are the more expensive cuts of a market lamb? a. Rack, loin, leg
23. What is the average amount of backfat on a market lamb? a. .30 in.
24. Where is backfat measured? a. At the 12th rib over the rib eye muscle.
25. How is the yield grade determined? a. (Backfat x 10) + 4

# CAROLEE BOELE MEMORIAL LADS & LADIES LEAD

ENTRY FEE \$12.00  
PRE ENTRY REQUIRED

Entries Due: September 29, 2021  
\*\*NO LATE ENTRIES ACCEPTED\*\*

Commentary due October 11, 2021  
Email to: livestock@fresnofair.com

## DIVISION 1601 SHEEP LEAD CLASSES

Class

1. 9-13 yrs. Lads & Ladies Lead
2. 14-19 yrs. Lads & Ladies Lead

### LEAD CLASS SCORECARD

<b>GENERAL APPEARANCE</b>	50%
Coordination of ensemble (use of wool)	
Suitability of style	
Presentation of garment	
Coordination of outfit for sheep	
Eye appeal	
<b>SHOWMANSHIP</b>	30%
Ability to lead	
Handling of sheep	
Appearance of animal	
<b>PERSONAL PRESENTATION</b>	20%
Poise	
Gracefulness	
<b>TOTAL</b>	100%

9. All grooming preparation for show must be done by entrant with advisor/leader/parent assistance is allowed. Entrant must be actively engaged in the fitting process.

**\*\*NOT A COSTUME CLASS\*\***

### CASH AWARDS OFFERED PER CLASS

FIRST PLACE WILL RECEIVE A BELT BUCKLE  
IF ONE HAS BEEN SPONSORED

PLACE	AWARD
1 <sup>st</sup> Place	\$25.00
2 <sup>nd</sup> Place	\$20.00
3 <sup>rd</sup> Place	\$15.00

## RULES

1. Entrant must be an exhibitor in the Junior Department at The Big Fresno Fair and must be the OWNER OF THE ANIMAL used in the Lead Class and shown in a Junior Livestock Department class at THE 2021 BIG FRESNO FAIR.
2. Entry is open to all members of 4-H, FFA. Independents must be registered as such with this fair.
3. Entrants must furnish their own outfit, which must be made of either 100% wool or a minimum of 70% wool and no more than 30% synthetic fiber. Entries will be judged on mode of dress selected, which must be appropriate, attractive and lend elegance to the class. In the case of a purchased garment exhibitors must furnish a picture of the clothing tag which lists the fibers in the garment. This tag can also be referred to as the care label. It must stay connected to the garment during competition.
4. Lads & Ladies Lead contestants must provide sample(s) of fabric(s) used in the outfit provided with commentary for Class 1 and 2.
5. Outfits must not have been used at prior Fresno Fair Lead Classes by the exhibitor or another exhibitor.
6. Outfits do not have to be made by the entrant.
7. Entrants must also provide their commentary sheet of 200 WORDS OR LESS based on the qualifying event. The commentary must be typed (double-spaced) and written in "THIRD PERSON."
8. Sheep must be conditioned, fitted, and trained to show on halter.



**CAROLEE BOELE  
SCHOLARSHIP FUND  
BARNYARD OLYMPICS  
WEEK ONE**

**REGISTRATION TO BE ANNOUNCED**

**SUNDAY, OCTOBER 10, 2021  
WEEK TWO  
SUNDAY, OCTOBER 17, 2021**

**SIGN UP SHEETS WILL BE LOCATED IN THE LIVESTOCK OFFICE  
GAMES WILL START FOLLOWING REGISTRATION**

**Games will be held in the Main Show Arena**

**Entries: \$10.00 per team**

**Teams consist of two exhibitors**

**CHAMPIONSHIP ROUND FOR WINNERS  
OF WEEK ONE AND WEEK TWO FOR THE BUCKLES**

**AWARDS: BUCKLES & RIBBONS  
GAMES: TBA**



**CAROLEE BOELE  
SCHOLARSHIP  
LUNCHEON**

**THURSDAY, OCTOBER 14, 2021  
12:00 NOON-1:00 PM**

**\$5.00 DONATION**

**LUNCH INCLUDES: HOT DOGS /SAUSAGE DOG, CHIPS, AND A COOKIE**

**\*PLEASE JOIN US IN THE FOOD TENT\***

**\*\*PURCHASE TICKETS AT THE DOOR\*\***

**\*\*\*ALL PROCEEDS GO TO THE CAROLEE BOELE SCHOLARSHIP FUND\*\*\***

**These activities may change due to state regulations**

# JUNIOR FUR & FEATHERS

TERRI O'LEARY-COLLINS, SUPERINTENDENT  
SHOW COORDINATOR-Elizabeth Ann Fahey

THERE ARE NO CLASSES AVAILABLE IN THE JUNIOR DIVISION FOR PRIMARY 4-H MEMBERS. JUNIOR EXHIBITORS MUST BE 9 YEARS OF AGE AS OF DECEMBER 31, 2020.

## ENTRIES ARE DUE: August 31, 2021

Enter online at [www.FresnoFair.com](http://www.FresnoFair.com)

**AUGUST 1, 2021-ADVISORS, LEADERS, PARENTS, MUST SUBMIT A LIST OF EXHIBITORS SHOWING MARKET CHICKENS FOR LEG BAND COUNT. SEND LIST VIA EMAIL TO:**  
[marinemomreese@yahoo.com](mailto:marinemomreese@yahoo.com) or [tcollins@fresnofair.com](mailto:tcollins@fresnofair.com).

## Rabbit Show: SATURDAY OCTOBER 2, 2021

7 AM - 8 AM Rabbit Check and weigh in  
9 AM Rabbit Judging and Showmanship

Release of rabbits will be at completion of the rabbit show. All Champions and Sale rabbits will remain until October 10, 2021. Rabbits will be released with the other species.

## RELEASE FORMS AVAILABLE IN THE FUR & FEATHERS OFFICE

### SUNDAY OCTOBER 3, 2021.

#### Scheduled Times will be given for inspection.

9 AM - 2 PM Poultry Inspection/ Weigh in/COOP IN  
INSPECTION TO BE HELD IN BUTLER CHANCE PARKING LOT.

### MONDAY OCTOBER 4, 2021.

#### 10 AM Market Poultry Judging

**MANDATORY-** all students must clean their birds for market poultry judging. All pens must be stripped/ cleaned daily. Judge may disqualify birds if pens are not clean. All market exhibitors do not have to remain on grounds during market judging, however each chapter/club/independent **MUST** have a representative available in the poultry barn during poultry market show.

#### 1PM - Poultry Judging, Showmanship/Breeding

Breeding birds will be released upon completion of the breeding show/Showmanship classes.

**Barn Monkeys Needed:** All birds that are remaining on grounds will need to be re cooped and all pens cleaned. We would appreciate assistance with this process. Please contact Ann in the Fur and Feathers office if you would like to be a Barn Monkey and receive a shirt for your help.

### FRIDAY, OCTOBER 8, 2021

DOG SHOW, MAIN ARENA 2 PM

### SATURDAY, OCTOBER 9, 2021

10 AM Small Animal Auction

### SUNDAY, OCTOBER 10, 2021

9 AM Small animal round robin

Barn OLYMPICS FOLLOWING Pee Wee Showmanship

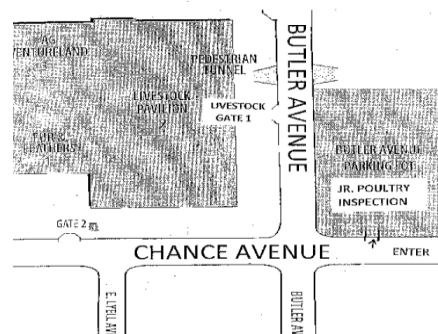
TBA RELEASE of all fur and feathers

## RELEASE FORMS AVAILABLE IN THE FUR & FEATHERS OFFICE

You must go through staging and enter through the BUTLER Avenue Livestock entrance and proceed to the Fur & Feathers area.

## CHECK SCHEDULE FOR DATES AND TIMES.

### STAGING AREA FOR JUNIOR POULTRY EXHIBITORS ONLY



1. ALL EXHIBITS ARE ENTERED AT THE OWNERS RISK. THE FAIR, EMPLOYEES, JUDGES AND SHOW PERSONNEL ARE NOT RESPONSIBLE IN ANYWAY FOR LOSS, INJURY OR MORTALITY OF ENTRY/EXHIBIT.

Enter online at [www.FresnoFair.com](http://www.FresnoFair.com).

2. Definitions and judging procedures: as prescribed in appropriate rule books shall apply to all district and county fairs, provided they do not conflict with any other rules and regulations prescribed by the Department of Food and Agriculture, and the Standard book of Perfection of the American Poultry Assn., Inc. Where no American standard is in vogue, the latest European Standard will be used.
- 3 The state of California has been mandated by the CDFA to do poultry inspections prior to coop in. The inspections will be conducted by a Certified Poultry Inspector. The inspection will be conducted in the Chance Ave. /Butler parking area located on the S.E. Chance and Butler Ave.
4. All Junior Exhibitors must be dressed in appropriate attire, 4-H or FFA uniform or Independent attire, to present their animals for judging and auction.
5. Fur and Feathers showmanship Livestock shown in showmanship must be owned by the exhibitor, entered by exhibitor and shown in an appropriate market, breeding, or performance class at the 2021 Big Fresno Fair. If the exhibitor has a market animal that is weight sifted and as a result may not show in an individual market class, the exhibitor may use this animal for showmanship if and only if this animal is the only animal the exhibitor has brought to the Fair. No exhibitor shall attach any items that may distract a judge's attention.
6. Ownership Requirements as stated in CDFA rules, page 6, #7. Unless otherwise allowed in the exhibitor handbook, exhibitors must be legal owners of all entries. Ownership must be maintained through show dates. All fur and feather entries must be part of a supervised project for a minimum of 60 days and each individual owned by the exhibitor for a minimum of 30 days.
7. ALL SPECIES MUST BE APPROPRIATELY IDENTIFIED I.E. PERMANENT TATTOO LEFT EAR MARKINGS, (for Rabbits); LEG BANDS (for poultry); any duplication of identifications by one exhibitor in the same division must be eliminated and the change recorded on the judging sheet BEFORE JUDGING.



8. **ALL POULTRY MUST GO THROUGH INSPECTION:**

All poultry must have forms completed before inspection by the state poultry inspector at staging. Market and Breeding inspection forms are available on-line or from the livestock office. SEE MAP ON PAGE 40

**(Poultry not passing inspection must be removed from the inspection area within one hour after inspection. No DQ birds are allowed on Fairgrounds, per CDFA rules. ) ENTRY FEES WILL NOT BE REFUNDED.**

9. **NO DISEASED BIRDS/RABBITS WILL BE ACCEPTED AND ALLOWED ON FAIRGROUNDS.** Please examine animals carefully before bringing to the inspection day and shows.

10. A judge may excuse an individual entry from competition because of temporary or curable defects.

11. NO PERSON SHALL INTERFERE WITH THE JUDGE, CLERKS, OR STAFF. ALL JUDGES DECISIONS WILL BE FINAL. ANY PERSON PROVEN TO BE IN VIOLATION WILL BE DISMISSED FROM THE SHOW. THIS INCLUDES PARENTS, LEADER/EXHIBITORS. PREMIUMS AND AWARDS WILL BE PULLED. MARKET ENTRIES MAY BE SUBJECT TO NO-SALE. THE LIVESTOCK SUPERINTENDENT WILL MAKE THE FINAL DECISION.

12. Each species will be shown and judged in the proper division and class for breed, variety, age, and sex as entered.

13. Ribbons and trophies won at other shows may not be displayed on coops either as decoration or advertising. Other signs or placards will not be acceptable **UNTIL AFTER JUDGING IS COMPLETE.**

14. **No exhibitor shall receive more than two cash awards in any one class as set forth in the state rules.**

15. It is the responsibility of each exhibitor to be aware of what time they show and to be at the show ring on time, dressed in show attire with your animal.

**NO EXCEPTIONS WILL BE MADE!**

16. **EXHIBITOR feeding hours: 7 AM to 8 AM, & 5 PM to 8 PM, NO EXCEPTIONS.** All exhibitors are expected to make sure that their animals are fed and cleaned. All chapters, clubs, independents will have a representative in the barn during fair hours. EXHIBITORS ARE EXPECTED TO CLEAN AND MAINTAIN THEIR PENS.

17. Market Pens will be judged using the Danish System. Group 1 and Group 2 are only eligible for auction. An American system will be used for the sale order.

18. Substitutions can only be made within the division/class. All substitutions must be made by:

**Monday, September 27, 2021, by 5PM ONLY.**

No more than 2 substitutions per division/class.

19. Exhibitor may supply own crocks and/or feeders and will be responsible for them.

20. Animals will be furnished shavings. Exhibitors MUST keep their own pens clean and ready for exhibit. Exhibitors may supply their own water bottles (2 per entry) for freezing. Your bottles will be placed in cages to help keep rabbits cool.

21. All meat producing MARKET PENS MUST FILL OUT DRUG FORMS AT WEIGH IN. Drug forms will be available at the weigh in tables.

## CHICKEN EGG QUALITY CONTEST

### Division 1300

#### ENTRY FEE:

\$ 3.00

#### LIMIT:

2 Plate

Entry to consist of a group of 3 eggs displayed on plates provided.

#### Classes

1. Large Eggs: Breed or Non-Standard & Color noted on entry
2. Bantam Eggs: Breed or Non-Standard & Color noted on entry
3. Waterfowl Eggs: Breed or Non-Standard & Color noted on entry
4. Non-Standard Eggs: If breed is known .

### The Egg Competitions

An egg show exhibitor does not have to show in the actual *in cage* show. Egg Competition Classes are offered to 4-H, Independents, and FFA.

### MAIN EGG COMPETITION STANDARD:

**Please note:** In this division, eggs will not be judged the same as commercial eggs. Per the APA Board - The APA does not judge chickens, waterfowl, etc. according to commercial specifications and will not do so for the egg entries.

### EXTERNAL CHARACTERISTICS

Proposed Classes for Main Egg Section - Open and Junior

NOTE: Non-Standard Eggs include birds not accepted in the APA *Standard of Perfection*, Mixed breeds and those of unknown ancestry.

**JUDGING CRITERIA:** Eggs to be uniform in shape, shell texture, size, color and appearance. Eggs must be delivered to the Fur and Feathers office the day that you coop in.

Awards to be announced

4-H/FFA/Independent will all compete together

## Painted Egg Standard Size

### Division 1301

\$ 3.00

#### ENTRY FEE:

#### LIMIT:

1 Egg per Class

One egg per entry.

(Egg size may be chicken, goose, duck, guinea, turkey)

### Class 1

#### Painted or Inked

1. Entry to be hard-boiled or blown.
2. Egg to be painted or inked.
3. No decoration may be applied.
4. Some type of upright support is recommended for display.
5. Egg MUST be painted or inked by the exhibitor.

### Class 2

#### Decorated Egg Standard

One egg per entry. (Egg size may be chicken, goose, duck, guinea, turkey)

1. Entry must be blown or hard-boiled.
2. Decorated egg may also be painted. Examples of adornment are beads, colored paper, shells, plant materials, etc.
3. Whatever the design chosen, the outline of the egg must be maintained, its shape always being recognizable.
4. Egg decoration MUST have been created by the exhibitor.

Awards to be announced

4-H/FFA/Independent will all compete together

## JR. POULTRY/AVIAN

### Poultry Entries from Other States

1. All exhibition poultry entering California require official identification (ID) and an Interstate Certificate 2021 State Rules -- Page 28 of Veterinary Inspection (ICVI), unless coming from a flock participating in the National Poultry Improvement Program (NPIP) and accompanied by the documentation required by that program (VS Form 9-3).
2. All exhibition poultry entering California shall be free of any evidence of Avian Influenza, Virulent Newcastle Disease and all other contagious diseases.
3. Acceptable methods of official identification of poultry include:
  - a. Identification devices or methods approved for use in the NPIP, such as sealed and number leg bands or wing bands.
  - b. Group/lot identification with a group/lot identification number

<b>ENTRY FEE PER CLASS</b>	\$5.00
<b>LIMIT</b>	NONE

### AMERICAN SYSTEM OF JUDGING

<u>CASH AWARDS OFFERED</u>	<u>AWARD</u>	<u>PLACE</u>
1 <sup>st</sup> Place	\$9.00	
2 <sup>nd</sup> Place	\$6.00	
3 <sup>rd</sup> Place	\$5.00	

## JR. LARGE POULTRY

- |                             |  |
|-----------------------------|--|
| <b><u>DIVISION 1333</u></b> | <b>AMERICAN BREEDS</b><br>PLYMOUTH ROCKS, RHODE ISLAND REDS, JERSEY GIANTS, NEW HAMPSHIRE'S, AND ANY OTHER S.D. AMERICAN BREED   |
| <b><u>DIVISION 1334</u></b> | <b>ASIATIC BREEDS</b><br>BAHAMAS, COCHINS, LANGSHANE AND ANY OTHER S.D. ASIATIC BREED  |
| <b><u>DIVISION 1335</u></b> | <b>ENGLISH BREEDS</b><br>CORNISH, ORPHINGTONS, AUSTRALORPS, SUSSEX AND ANY OTHER S.D. ENGLISH BREED  |
| <b><u>DIVISION 1336</u></b> | <b>MEDITERRANEAN BREED</b><br>LEGHORNS, MINORCAS, SPANISH, ANDALUSIANS, ANCONAS AND ANY OTHER S.D. MEDITERRANEAN BREED   |
| <b><u>DIVISION 1337</u></b> | <b>CONTINENTAL BREEDS</b><br>HAMBURGS, BEARDED AND NON-BEARDED POLISH, BARNVELDERS, HOUDANS, CREVECOEURS, LA FELCH, WELSUMMERS, FAVEROLLES, AND ANY OTHER STANDARD CONTINENTAL BREED |
| <b><u>DIVISION 1338</u></b> | <b>OLD ENGLISH GAME</b><br>ALL VARIETIES   |
| <b><u>DIVISION 1339</u></b> | <b>ALL OTHER STANDARD BREEDS (AOSB)</b><br>PHOENIX, ASEELS, SHAMOS, ARAUCANAS, AMERAUCANAS, AND ANY OTHER S.D. LARGE BREED.  |
| <b><u>DIVISION 1340</u></b> | <b>ANY NON-S.D. LARGE POULTRY - IDENTIFY</b><br>THIS DOES NOT INCLUDE CROSSBREDS.  |
| <b><u>DIVISION 1341</u></b> | <b>UTILITY</b><br>THIS CLASS WILL BE JUDGED ON CONDITION ONLY.   |

Class	
1. Cock	1 Year and Older
2. Hen	1 Year and Older
3. Cockerel	Under 1 Year
4. Pullet	Under 1 Year

## JR. BANTAM POULTRY

- |                             |  |
|-----------------------------|--|
| <b><u>DIVISION 1342</u></b> | <b>BANTAM OLD ENGLISH GAME</b><br>BLACK, BLACK BREASTED RED, BROWN RED, SILVER DUCKWING, WHITE, BLUE, BLUE BREASTED RED, WHEATEN, LEMON BLUE, CRELE, AND ALL OTHER OLD ENGLISH VARIETIES |
| <b><u>DIVISION 1343</u></b> | <b>MODERN GAME</b><br>ALL MODERN GAME VARIETIES  |
| <b><u>DIVISION 1344</u></b> | <b>SINGLE COMB CLEAN LEGGED BREEDS</b><br>AUSTRALORPS, RHODE ISLAND REDS, LEGHORNS, NEW HAMPSHIRE'S, PHOENIX, PLYMOUTH ROCKS AND ANY OTHER S.D. SINGLE COMB CLEAN LEGGED BREED           |
| <b><u>DIVISION 1345</u></b> | <b>ROSE COMB CLEAN LEGGED BREEDS</b><br>HAMBURGS, LEGHORNS, ROSECOMBS, SEBRIGHTS, AND ANY OTHER S.D. ROSE COMB CLEAN LEGGED  |
| <b><u>DIVISION 1346</u></b> | <b>ALL OTHER COMBS CLEAN LEGGED BREEDS</b><br>AMERAUCANAS, ARAUCANAS, CORNISH, HOUDANS, POLISH, SHAMOS   |
| <b><u>DIVISION 1347</u></b> | <b>FEATHER-LEGGED BANTAM BREEDS</b><br>BRAHMAS, COCHINS, FRIZZLES, FAVEROLLES, LANGSHAN, SILKIES, SULTANS, AND ANY OTHER FEATHER-LEGGED BANTAM BREED                                     |
| <b><u>DIVISION 1348</u></b> | <b>ANY NON-STANDARD BANTAM BREEDS - IDENTIFY</b><br>THIS DOES NOT INCLUDE CROSSBREDS.  |

Class	
1. Cock	1 Year and Older
2. Hen	1 Year and Older
3. Cockerel	Under 1 Year
4. Pullet	Under 1 Year

## JUNIOR TURKEYS

<b>ENTRY FEE PER CLASS</b>	\$5.00
<b>LIMIT</b>	NONE

### AMERICAN SYSTEM OF JUDGING

<u>CASH AWARDS OFFERED</u>	<u>AWARD</u>
<u>PLACE</u>	
1 <sup>st</sup> Place	\$9.00
2 <sup>nd</sup> Place	\$6.00
3 <sup>rd</sup> Place	\$5.00

- |                             |  |
|-----------------------------|--|
| <b><u>DIVISION 1351</u></b> | <b>ANY STANDARD BREED/VARIETY</b><br>Class<br>1. Old Tom/Young Tom<br>2. Old Hen/Young Hen |
|-----------------------------|--|

## JUNIOR DUCKS

ENTRY FEE PER ENTRY \$5.00  
LIMIT NONE

PLEASE ENTER BREED ON ENTRY FORM  
AMERICAN SYSTEM OF JUDGING  
ALL DUCKS MUST HAVE LEG BANDS AT INSPECTION

### CASH AWARDS OFFERED

<u>PLACE</u>	<u>AWARD</u>
1 <sup>st</sup> Place	\$9.00
2 <sup>nd</sup> Place	\$6.00
3 <sup>rd</sup> Place	\$5.00

### DIVISION 1352

All varieties will show in the same division  
Class

1. Old Drake / Young Drake
2. Old Duck/Young Duck

## JUNIOR GEESE

ENTRY FEE PER CLASS \$5.00  
Limit per class NONE

AMERICAN SYSTEM OF JUDGING

### CASH AWARDS OFFERED

<u>PLACE</u>	<u>AWARD</u>
1 <sup>st</sup> Place	\$9.00
2 <sup>nd</sup> Place	\$6.00
3 <sup>rd</sup> Place	\$5.00

### DIVISION 1357

All Varieties will show in the same division  
Class

1. Old Gander/Young Gander
2. Old Goose/Young Goose



## POULTRY MARKET ANIMALS

ENTRY FEE PER CLASS \$12.00  
LIMIT: 1 Pen per Exhibitor

**NO CASH AWARDS WILL BE PAID ON  
POULTRY MARKET ANIMALS**

### DIVISION 1360 POULTRY

Class

1. Pen of 1 turkey
2. Pen of 2 meat chickens

### RULES

All birds must be the appropriate weight and size.  
DESCRIPTION:

#### Chickens not over ten weeks old

Light weights 4 ½ -6 pounds each bird.  
 Heavyweights over 6-8 pounds each bird.

#### Ducks not over 16 weeks old

Weight 6-12 pounds

**CHICKENS OVER 8 POUNDS OR DUCKS OVER 12 POUNDS WILL  
BE SIFTED AT THE SCALE.**

Exhibitors are limited to the sale of one Small Animal pen; Turkeys, Chickens or Rabbits, and one (1) Layer Replacement pen.

Exhibitors with a Market Turkey or a pen of Market Chickens are to assist in cleaning pens during their stay at the fair.

**NEW:** All Meat Birds and Layers must be banded prior to health inspection. Band numbers must be on entry forms. All market birds must be able to support their own weight for 45 seconds.

**NEW:** Market I.D. forms must be complete and be presented to health inspector at inspections site.

## MARKET LAYING HENS

ENTRY FEE PER CLASS \$ 15.00  
LIMIT: 1 Pen per Exhibitor

### DIVISION 1360 POULTRY

Class: 4 Pen of 2 layers - Large (Commercial Type)  
 8 to 12 months of age

**REMEMBER: THERE IS NO EATING  
OR SMOKING IN THE BARN**

## FFA/INDEPENDENT SHOWMANSHIP

**ENTRY FEE PER CLASS:** **\$10.00**  
**Exhibitors may only enter in one showmanship class per species.**

**DIVISION 1385** **JUNIOR, SENIOR AND GRADUATE SHOWMANSHIP** - This Division is open to all Junior, Senior and Graduate FFA/Independent members.

**DIVISION 1386** **FRESHMAN/SOPHOMORES SHOWMANSHIP**  
 This Division is open to all FFA/Independent Freshman and Sophomores.

**DIVISION 1387** **NOVICE SHOWMANSHIP**  
 This Division is open to Novice first time showmen only in each species. A novice showman is one who has never shown an animal in that particular species, including any other organization such as 4-H or Independent and Jackpot shows at time of entry.

**CLASS**

- 1 RABBITS
- 2 POULTRY

**ORDER OF JUDGING**

Senior  
 Freshman  
 Novice

## 4-H/INDEPENDENT SHOWMANSHIP

**ENTRY FEE PER CLASS:** **\$10.00**  
**Exhibitors may only enter in one showmanship class per species.**  
 Entry must have been shown in feeder, market or breeding class.

**DIVISION 1382** **SENIOR SHOWMANSHIP**  
 Age 14 and up

**DIVISION 1383** **INTERMEDIATE SHOWMANSHIP**  
 Ages 11-13

**DIVISION 1384** **JUNIOR SHOWMANSHIP**  
 (9 years of age by December 31, 2020)

**CLASS**

- 1 RABBITS
- 2 POULTRY

**ORDER OF JUDGING**

Senior  
 Intermediate  
 Junior

## CASH AWARDS OFFERED PER CLASS

<u>PLACE</u>	<u>AWARD</u>
1 <sup>st</sup> Place	\$16.00
2 <sup>nd</sup> Place	\$14.00
3 <sup>rd</sup> Place	\$12.00
4 <sup>th</sup> Place	\$12.00

## JUNIOR RABBITS

**RABBIT AND CAVY Rabbit and Cavy Entries from Other States**

1. All rabbits and cavies are recommended to have an Interstate Certificate of Veterinary Inspection (ICVI). An ICVI is required if coming from a state affected by Rabbit Hemorrhagic Disease (RHD). Animals must be inspected by an accredited veterinarian within 72 hours prior to shipping to California. The following statements, listed on California's regional quarantine, must be included on the ICVI:

All rabbits and hares in the shipment have been examined for and found free of communicable diseases, and

- All rabbits and hares have originated from a single premises that has no signs of a communicable disease, and
- There have been no movements of rabbit and hares onto the premises over the past 30 days, and
- The animals have had no contact with wild rabbits or hares in the past 30 days.

2. Persons who intend to bring their animals back to the origin state after the show should check with their state's Department of Agriculture to make sure the animals will be allowed to return to origin state.

**ENTRY FEE PER CLASS**  
**LIMIT**

\$10.00  
 None

**AMERICAN SYSTEM OF JUDGING**  
**AWARDS OFFERED**

BEST OF BREED  
 BEST OPPOSITE OF BREED  
 BEST OF VARIETY  
 BEST OPPOSITE OF VARIETY

SELECTED FROM CHAMPIONS OF EACH RABBIT DIVISION

## JUNIOR HEAVYWEIGHT RABBITS

<b><u>DIVISION 1302</u></b>	<b>REX</b>
<b><u>DIVISION 1303</u></b>	<b>CALIFORNIAN</b>
<b><u>DIVISION 1304</u></b>	<b>NEW ZEALAND AC</b>
<b><u>DIVISION 1305</u></b>	<b>ANY OTHER BREED</b>

**Class**

1. Senior Buck	8 months of age & over
2. Intermediate Buck	6 to 8 months of age
3. Junior Buck	Under 6 months of age
4. Sr. Doe	8 months of age & over
5. Intermediate Doe	6 to 8 months of age
6. Junior Doe	Under 6 months of age

## LIGHT WEIGHT RABBITS

<u>DIVISION 1308</u>	DUTCH
<u>DIVISION 1309</u>	MINI LOPS
<u>DIVISION 1310</u>	NETHERLAND DWARF
<u>DIVISION 1311</u>	HOLLAND LOPS
<u>DIVISION 1312</u>	MINI REX
<u>DIVISION 1313</u>	POLISH
<u>DIVISION 1314</u>	ANY OTHER BREED IDENTIFY

### Class

- |                |                        |
|----------------|------------------------|
| 1. Senior Buck | 6 months of age & over |
| 2. Junior Buck | Under 6 months of age  |
| 3. Senior Doe  | 6 months of age & over |
| 4. Junior Doe  | Under 6 months of age  |

## FUR ANIMALS

ANIMALS MUST HAVE BEEN SHOWN AND QUALIFIED IN PREVIOUS BREED DIVISION.

### DIVISION 1316 FUR ANIMALS

#### Class

1. Rex
2. Normal
3. Satin
4. Wool

<u>ENTRY FEE PER CLASS</u>	\$5.00
<u>LIMIT</u>	NONE

### AMERICAN SYSTEM OF JUDGING CASH AWARDS OFFERED

<u>PLACE</u>	<u>AWARD</u>
1 <sup>st</sup> Place	\$10.00
2 <sup>nd</sup> Place	\$ 7.00
3 <sup>rd</sup> Place	\$ 5.00

## 4-H/INDEPENDENT SHOWMANSHIP

### ENTRY FEE PER CLASS: \$10.00

*Exhibitors may only enter in one showmanship class per species.*

Entry must have been shown in feeder, market or breeding class.

### DIVISION 1382 SENIOR SHOWMANSHIP Age 14 and up

Must be 9 years old on or before December 31, 2020.

### DIVISION 1383 INTERMEDIATE SHOWMANSHIP Ages 11-13

Must be 9 years old on or before December 31, 2020.

### DIVISION 1384 JUNIOR SHOWMANSHIP (Ages 9-10)

Must be 9 years old on or before December 31, 2020.

### CLASS

- 1 RABBITS

### ORDER OF JUDGING

Senior  
Intermediate  
Junior

## FFA/INDEPENDENT SHOWMANSHIP

ENTRY FEE PER CLASS: \$10.00  
**Exhibitors may only enter in one showmanship class per species.**

DIVISION 1385 JUNIOR, SENIOR AND GRADUATE SHOWMANSHIP - This Division is open to all Junior, Senior and Graduate FFA/Independent members.

DIVISION 1386 FRESHMAN/SOPHOMORES SHOWMANSHIP  
This Division is open to all FFA/Independent Freshman and Sophomores.

DIVISION 1387 NOVICE SHOWMANSHIP  
This Division is open to Novice first time showmen only in each species. A novice showman is one who has never shown an animal in that particular species, including any other organization such as 4-H or Independent and Jackpot shows at time of entry.

### CLASS

- 1 RABBITS

### ORDER OF JUDGING

Senior  
Freshman  
Novice

### CASH AWARDS OFFERED PER CLASS

<u>PLACE</u>	<u>AWARD</u>
1 <sup>st</sup> Place	\$20.00
2 <sup>nd</sup> Place	\$10.00
3 <sup>rd</sup> Place	\$15.00

**Rabbit Show Preparation and Showmanship :** Rabbits for show should be selected as close to meeting the ARBA standard for that breed as possible. As soon as you get your rabbits, begin preparing for the show. Proper handling is a must for your safety as well as the safety and welfare of the rabbits. Below is an outline to help members properly handle their rabbits, as well as prepare for the show and showmanship. Handling

1. Wear long sleeves to protect your arms from getting scratched.
2. Handle your rabbit with care, and often.
3. Always handle your rabbit humanely. NEVER lift or carry a rabbit by its ears. This is painful for the rabbit. Lifting by the ears causes damage to the ear veins. Also, without the entire body being supported, when a rabbit kicks to free itself, it may cause bone fractures in its back or hind legs, and cause injury to nerves or tendons.
4. NEVER lift a rabbit by its legs. This is painful, as well as can cause injury as mentioned in No. 3.
5. NEVER lift a rabbit by the scruff of its neck without supporting the entire body weight, as injuries can occur as mentioned in No. 3. Also, fur can be damaged.
6. Put a rug or piece of carpet on the table or area where you are handling your rabbit, so it can get a foothold when being handled. Smooth surfaces cause a rabbit to slide, making it hard to handle, groom, and pose. A rabbit will not feel secure on smooth places, and may become afraid.
7. Handle your rabbit during the cool part of the day. Two or three short sessions are better than one long session.
8. Handling rabbits when it is too hot can cause unnecessary stress and heat stroke.
9. Carry your rabbit by tucking its head under your arm while supporting its body between your side and your same arm. The rabbit's eyes should be covered by your elbow. Support the hindquarters with your free hand.

## JUNIOR RABBIT MARKET ANIMALS

<b>ENTRY FEE PER CLASS</b>	\$12.00
<b>LIMIT</b>	none
<b>(Only one pen will be allowed to show)</b>	

RABBIT JUDGING WILL BE CONDUCTED FROM THE AMERICAN  
RABBIT BREEDERS ASSOCIATION STANDARDS & GUIDE FOR  
JUDGING MEAT CLASSES AND MEAT PENS

**All exhibitors may enter single fryer classes in case of disqualified pen animals. Single fryer classes must be entered by the entry deadline date in order to be eligible to substitute from a pen to a single fryer. No substitutions will be done the day of weigh in unless entries have been received by entry deadline listed above.**

**ALL MARKET RABBIT EXHIBITORS MUST HAVE A BUYER IN ORDER TO ENTER. IF YOU DO NOT HAVE A SIGNED BUYERS FORM YOU WILL NOT BE ALLOWED TO SELL!!!**

### **DIVISION 1317 Meat Market Rabbits**

- |       |                     |
|-------|---------------------|
| Class | 1. Single Fryer-4-H |
|       | 2. Single Fryer-FFA |
|       | 3. Pen of Three-4-H |
|       | 4. Pen of Three-FFA |

ALL RABBITS MUST HAVE BUYERS COMMITMENT FORMS WITH CHECKS ATTACHED IN ORDER TO SELL

### **RULES**

1. All rabbits must be the appropriate weight and size. Rabbit meat pens shall be of the same breed and variety.

<b>AGE LIMIT</b>	<b>10 Weeks</b>
<b>MINIMUM WEIGHT</b>	<b>3 ½ lbs. each</b>
<b>MAXIMUM</b>	<b>5 ½ lbs. each</b>

### **MEAT STANDARDS**

Four factors, in the order of their importance, for judging meat pens, are as follows (1) Meat type, (2) Condition, (3) Uniformity, and (4) Fur Meat pens shall consist of the three rabbits, all of the same breed and variety. Broken group meat pens must also be of the same variety. A meat pen does not necessarily have to come from the same litter. Age limit 10 weeks. Minimum weight 3 ½ pounds each. Maximum weight 5 ½ pounds each. All rabbits must be weighed-in by Fair staff, or in the presence of the judge.

### **POINT SCHEDULE FOR JUDGING MEAT PENS**

Meat type	40 Points
Condition of Flesh	30 Points
Uniformity of body and weight	20 Points
Fur	10 Points
<b>TOTAL</b>	<b>100 Points</b>

### **MEAT TYPE 40 points**

The most desirable animals are those with commercial type. The body should be heavily muscled and well rounded. The back legs should be thickly muscled and extend far down the leg toward the hock joint. The loin should be wide and thick starting from the rib cage and continuing to the hip loin juncture. The rib cage should be deep, well sprung, and have a wide chest floor to properly house the heart and lungs, all of which are vital in the animals growth. The front legs should also be considered in the evaluation of the animal and should carry enough muscle to balance and correctly support the animal loin/midsection are second of importance. The hind quarters are most important, and forequarters are third in importance.

**FAULTS:** Fault for large frame, heavy bone, large head, thick ears, heavy hide. Fault animals that are thinly muscled, tapered in the loin, narrow chested, and exhibit protruding hips.

### **CONDITION 30 Points**

All fryers in a pen must be in prime condition. This reflects the care and management practices of the breeder. The fryers must be firm and solid. They must not show any signs of flabbiness, softness, looseness, or pottiness. The pelt must be tight over the body and the animals must be clean and show no signs of neglect or disease.

### **UNIFORMITY 20 Points**

Uniformity reflects the ability of the exhibitor to select three fryers for the pen that have similar traits. Uniformity must be present in weight, size, appearance, condition, meat type, and fur, and should be as similar in all respects as possible. (All six elements of uniformity are to be valued evenly.)

**FAULT:** Lack of uniformity.

### **FUR 10 Points**

Fur should conform to the breed description in the standard and be uniform on all three animals in the pen.

### **DISQUALIFICATION FROM COMPETITION**

All ARBA disqualifications from competition and breed disqualification from competition apply to each meat pen, with the following exception: Body smut on pointed white marked animals. Bucks must show both or either testicle. Those showing only one at time of judging, are to be disqualified from competition.

**FAULTS:** Stained or Dirty animals

**NOTE:** *On Californian meat pens and single fryers, the frosting due to genetic characteristic or nest box chilling shall not be a disqualification. Such animals are to compete as if their pelts were white, as called or underweight, the entire pen is disqualified from competition. If anyone rabbit in the pen is disqualified from competition, the entire pen becomes disqualified. All ARBA general faults apply to each meat pen.*  
*All rabbits must be the appropriate weight and size. Rabbit meat pens shall be of the same breed and variety.*



## DOGS

**Entry Fee:** \$ 10.00

**ENTRY LIMITS:** One dog per exhibitor.

**One Obedience Class and one Showmanship Class per dog.**  
**All entries must be completed on line. Proof of Vaccinations and Rabies**  
**Certificate must be uploaded with online entries. No Exceptions**

**FEMALES IN HEAT WILL NOT BE ALLOWED TO EXHIBITED**

**Entries Due:** August 31, 2021

**On-Line Only** ENTER ONLINE at [www.FresnoFair.com](http://www.FresnoFair.com)

### **Dog Rules**

1. Enter online at the fair's website: [www.fresnofair.com](http://www.fresnofair.com)
2. Dogs must be on a leash at all times and under control. Unruly or aggressive dogs will be removed.
3. Owners will clean up after their own animals.
4. All exhibitors must possess valid Rabies and Parvo vaccination papers for their dogs.
5. Dogs must be at least 6 months old, have current vaccinations and be trained by member exclusively during project year.
6. Female Dogs in season will NOT be allowed on the Fairgrounds.
7. No exhibitor may handle more than one dog in any one class.
8. Judging and scoring will be according to the AKC regulations.
9. Best in Showmanship winners are eligible to compete in Small Animal Master Showmanship
10. Each exhibitor will be judged individually by the judge.
11. Exhibitors must be in complete 4-H/FFA uniform in order to compete in showmanship. See requirements for uniforms in this handbook under General Information.
12. The Big Fresno Fair is not responsible for loss, death, or injury of any animals. All possible care will be taken for your animals.
13. All trophies and rosettes must be picked up at close of show.
14. All premiums payback will be mailed after the show.
15. Dog must be owned by the exhibitor.
16. Each exhibitor will be required to go through the standard showmanship procedure individually as instructed by the judge.
17. Each exhibitor is responsible for keeping his/her animal under control at all times.
18. Any further instruction will be given at judging.
19. Age requirements as noted.

## Showmanship Awards

### **CASH AWARDS**

<u>PLACE</u>	<u>AWARD</u>
1 <sup>st</sup> Place	\$25.00
2 <sup>nd</sup> Place	\$20.00
3 <sup>rd</sup> Place	\$15.00
4 <sup>th</sup> Place	\$13.00

## SHOWMANSHIP

**Entry Fee:** \$ 10.00

**ENTRY LIMITS:** One dog per exhibitor.

### **DIVISION 1358**

**Class**

1. 4-H/INDEPENDENT-- Junior (Ages 9-10)  
Must be 9 years old on or before December 31, 2020.
2. 4-H/INDEPENDENT—Intermediate-(Age 11-13)  
Must be 11 years old on or before December 31, 2020.
3. 4-H/INDEPENDENT—Senior- (Age 14 and up)  
Must be 14 years old on or before December 31, 2020.

### **SHOWMANSHIP**

### **DIVISION 1358**

**Class**

4. FFA/INDEPENDENT-Novice  
(Never Shown a DOG Before)
5. FFA/INDEPENDENT-Freshmen/Sophomore
6. FFA/INDEPENDENT-Junior/Senior

### **SHOWMANSHIP RULES**

1. Each exhibitor will be judged individually by the judge.
2. Exhibitors must be in complete 4-H/FFA uniform in order to compete in showmanship. See requirements for uniforms in this handbook under General Information.
3. Each exhibitor will be required to go through the standard showmanship procedure individually as instructed by the judge.
4. Each exhibitor is responsible for keeping his/her animal under control at all times. Bait is allowed and should be carried in pocket or bait bag, show leads are recommended
5. Any further instruction will be given at judging.
6. The intent of this fitting rule is that junior exhibitors are primarily responsible for the fitting, grooming and/or showing of their own animals, without the physical assistance of adults and/or professionals. Recognizing that some physical assistance is often required, individuals who are eligible to be junior exhibitors in the Junior Dog Show are allowed to physically assist in the fitting, grooming and/or showing of an exhibitor's animal.
7. Grooming is to take place in the Grooming Area only.
8. All vehicles will be able to drop exhibitors and dogs off at the Chance gate. No vehicles will be allowed to park on the fair grounds. They must be parked in designated parking area.
9. Exhibitor lists specific time and place of show, credentials and other information regarding the Dog Show will be sent to participants prior to the show day.

### **FRESNO FAIR SHOWMANSHIP**

### **EXERCISES INCLUDE:**

1. Gait in circle control of dog	15 points
2. Gaiting Pattern	15 points
3. Individual Examination	15 points
4. Return to Line up	10 points
5. Attention to Judge	15 points
6. Proper use of Lead	5 points
7. Cleanliness-Grooming of Dog	15 points
8. Poise- Knowledge	10 points
<b>Total</b>	<b>100 points</b>

## DOG OBEDIENCE

**Entry Fee:** **\$ 10.00**

**ENTRY LIMITS:** One dog per exhibitor.

### DIVISION 1359

Class

1. 4-H/INDEPENDENT- 1 year in program
2. 4-H/INDEPENDENT- 2-3 years in program
3. 4-H/INDEPENDENT- 4 years in program

### DIVISION 1359

Class

4. FFA/INDEPENDENT - 1 year in program
5. FFA/INDEPENDENT - 2-3 years in program
6. FFA/INDEPENDENT - 4 years in program

## DOG OBEDIENCE RULES

1. Classes will be divided according to the both the Exhibitor's and the dog's number of years in obedience training and showing.
2. Classes will be determined by the number of entries according to the level of both the Exhibitor's and dog's experience in obedience and showing. Sub classes may be added as necessary to divide the class
3. Exhibitor must list on entry form the number of years of experience in obedience and training for both the dog and the exhibitor.
4. Exhibitors must be in complete 4-H/FFA uniform in order to compete in obedience. See requirements for uniforms in this handbook under General Information.
5. Each exhibitor is responsible for keeping his/her animal under control at all times.
6. Exercises will be in accordance with AKC regulations, except Novice, which will be modified with no off lead heeling and group sits and down will be on lead.
7. Any further instruction will be given at judging.
8. Age requirements as noted.

### FRESNO FAIR OBEDIENCE TRIAL SCORE SHEET:

1. Heel ON/OFF Lead	40 Points
Depending on the class and FIGURE	8 Points
2. Stand for Examination	30 Points
3. Recall	30 Points
4. Long Sit	30 Points
5. Long Down	30 Points
<b>Total</b>	<b>160 Points</b>

## SHOW NOTES

### CASH AWARDS

<u>PLACE</u>	<u>AWARD</u>
1 <sup>st</sup> Place	\$25.00
2 <sup>nd</sup> Place	\$20.00
3 <sup>rd</sup> Place	\$15.00
4 <sup>th</sup> Place	\$13.00

