

THE Big Fresno Fair 2022 LIVESTOCK AND FUR & FEATHERS EXHIBITS HANDBOOK

CONTENTS

INDEX	PAGE
NEW FOR 2022 INFORMATION	3
2022 State Rules	https://www.cdfa.ca.gov
2022 Local Rules/ REGULATIONS	9-14
MARKET AND FEE SCHEDULE	9
CALENDARS/SCHEDULES	4
UNIFORM/DRESS CODE	10
WRISTBAND/PARKING/RV INFORMATION	14
CHAMPIONS OF EXCELLENCE	20-21
ACTIVITIES/BARN OLYMPICS	9.24
JUNIOR LIVESTOCK DEPARTMENT	4-59
DOGS	71-73
JUNIOR FUR & FEATHERS	59-70
STAGING MAP	3, 60
POULTRY INSPECTION MAP WEEK 1	60

VISIT OUR WEB SITE AT: www.FresnoFair.com
[ALL ENTRIES, PICTURES, FORMS, MUST BE](#)

[SUBMITTED ON LINE!!](#)



**UNDER THE DIRECTION OF THE
21ST DISTRICT AGRICULTURAL ASSOCIATION
OF THE STATE OF CALIFORNIA**

BOARD OF DIRECTORS

President: Chuck Riojas
Vice President: Terry Gonsalves
Sec/Treasure Gary Chahil
Linda Mae Balakian Hunsucker
Gary Chahil
Frank Flores
Jerry Pacheco
Annalisa Perea
Larry Salinas

STATE OF CALIFORNIA OFFICIALS

Gavin Newsom-Governor
Karen Ross - Secretary, Dept. of Food & Agriculture
Andreas Borgeas 8th District State Senator
Anna Caballero 12th District State Senator
Melissa Hurtado 14th District State Senator

CONGRESSIONAL DISTRICTS

Jim Costa 16th District
Tom McClintock 4th District
David Valadao 21st District

COUNTY BOARD OF SUPERVISORS

Chairman - Brian Pacheco
Vice Chair - Sal Quintero
Steve Brandau
Nathan Magsig
Buddy Mendes

THE BIG FRESNO FAIR MANAGEMENT

Deputy Managers II Stacy Rianda/Lauri King

DEPARTMENT SUPERINTENDENTS

Livestock/Fur & Feathers	Terri O'Leary-Collins
Agriculture Building	Cindy Suarez
Fine Arts & Photography	Vishinna Turner
Floriculture	Jennifer Waite
Gem & Minerals	Richard English
Home Arts/Jr.Exhibits	Kathy Currin

What's New 2022

1. PROP 12 COMPLIANCE FORMS FROM BREEDERS ALL MARKET HOGS
2. ALL FFA/4-H CHECKS MUST BE PICKED UP FROM THE EXHIBITS OFFICE. CHECKS WILL NOT BE MAILED.
3. POULTRY EXHIBITORS MUST CLEAN ALL PENS UPON COMPLETION OF BREEDING SHOWS.
4. POULTRY EXHIBITORS MUST SIGN UP FOR BARN DUTY DAILY. A REPRESENTATIVE OF EACH CLUB OR CHAPTER MUST HAVE A PERSON SIGNED UP FOR BARN DUTY TO ASSIST IN THE CLEANING AND FEEDING OF ALL BIRDS DURING THE FAIR.
5. BEEF LEAD IS BACK
6. BEEF COSTUME CONTEST
7. SHEEP COSTUME CONTEST
8. GOAT COSTUME CONTEST - TBA WITH RULES AND GUIDLINES
9. PEE WEE FIRST WEEK GOATS DAIRY AND PYGMY
10. PEE WEE SECOND WEEK MEAT GOAT
11. MARKET DAIRY GOATS BACK ON WEEK ONE
12. OPEN DAIRY GOAT SHOW

No Generators will be allowed in or around the Barns at Any time.

NO HOMEMADE CORDS

ALL POWER CORDS MUST BE AFFIX TO A PERMENENT FIXTURE.

Every exhibitor MUST enter online and attach documents and photos in the required fields. Paper copies will not be accepted!!

DUE TO THE COVID-19 OUTBREAK DATES AND TIMES MAY BE CHANGED IN ORDER TO COMPLY WITH STATE AND LOCAL RULES.

Staging and Livestock Parking Area



JUNIOR LIVESTOCK DEPARTMENT

Terri O'Leary-Collins
Livestock Superintendent
tcollins@fresnofair.com
559-453-6890 Exhibits office
559-570-3443 livestock office

The Livestock Office hours will be 9 AM to 4 PM
Monday through Friday
Starting Monday, September 19, 2022
Phone (559) 570-3443
ENTER ONLINE at www.FresnoFair.com

LIVESTOCK DEPARTMENT SCHEDULE PRE-FAIR DATES AND TIMES

AS REFERRED TO IN SECTION 2 OF THE STATE RULES FOR CALIFORNIA FAIRS, ALL STATE
RULES APPLY

www.cdfa.ca.gov/FairsAndExpositions

TUESDAY, May 3, 2022

Emailed Lists by club of Beef Market Exhibitors. Lists should be emailed to:
Livestock@fresnofair.com. In order to receive ear tags you must submit a list of beef exhibitors. If you did not submit a list you will not be issued an ear tag. Beef ear tags will be disbursed May 9, 2022 between the hours of 9am-4pm from the ticket office at the admin office. Ear tags are required for entries.

WEDNESDAY JUNE 1, 2022

Independent intent to exhibit paperwork is due.
(2021Independents that did not file an independent record book on 12/30/2021 are not eligible to show as an independent at the 2022 Junior Livestock Show)
Exhibitors may submit documents online, mailed or delivered to the Exhibits office no later than 4PM.

FRIDAY JUNE 3, 2022

ENTRIES DUE: BEEF, DAIRY & DAIRY PROSPECT CONTRACTS are due **ON-LINE ENTRIES ONLY** Paperwork must be submitted on line only. Fillable contracts are located on our web page www.fresnofair.com. Please use these for ease in upload.

Beef market contracts, photos with ear tags in the ear (3 photos, 1 head shot with exhibitor, right side and left side), bill of sale/brand inspection, and health certificates for out of state animals are due.

SATURDAY JUNE 18, 2022

7AM-10AM Heifer Inspection

DAIRY REPLACEMENT DOE ENTRIES ARE DUE ONLINE ONLY

11AM-1PM Doe Inspection / BLOOD DRAW

Replacement heifers and Replacement Doe Inspection.

This is a Mandatory-Dairy inspection to be eligible to enter and sell at the 2022 Junior Livestock show and auction. Heifers must walk on a halter, or they will not be inspected

FRIDAY JULY 1, 2022

List of exhibitors for swine, meat goat, & sheep, by club, chapter, or exhibitor emailed to : livestock@fresnofair.com

These numbers MUST be accurate.

This information is used to determine the number of ear tags disbursed.

MONDAY, AUGUST 1, 2022

Market sheep, goat, swine, breeding and showmanship are due. (EXAMPLE: breeders and feeders)

WEDNESDAY, AUGUST 31, 2022

All Fur and Feathers entries are due

Pee Wee Showmanship Entries Are Due

Sheep Lead & Costume Entries Are Due

Beef Lead & Costume Entries Are Due

GoGo goat decorator class Entries are Due

All entries MUST be done on-line. All required documents must be uploaded in the proper upload area. No hand carried documents will be accepted.

FRIDAY SEPTEMBER 16, 2022, Last day to order Discounted Wristbands.

MONDAY-THURSDAY ONLY, SEPTEMBER 26 - OCT 3, 2022

8AM -3PM PREPAID WRISTBANDS READY FOR PICK UP IN THE LIVESTOCK OFFICE

ALL WRISTBANDS MUST BE PICKED UP PRIOR TO WEDNESDAY,
OCTOBER 5, 2022,
THE OPENING DAY OF THE FAIR
WRISTBANDS MAY BE PURCHASED ON-LINE.
WRISTBAND FORMS MUST BE MAILED TO: THE BIG FRESNO FAIR LIVESTOCK
1121 S. CHANCE AVE,
FRESNO, CA 93702
OR EMAILED TO: livestock@fresnofair.com Livestock@fresnofair.com

MONDAY, SEPTEMBER 26, 2022

Gragnani Scholarship applications are due in the exhibits office by 4PM

Visit our website www.fresnofair.com and click livestock forms. All scholarship information will be located under forms

All clubs, chapters, and independent exhibitors will be scheduled for haul in and haul out.

MESSAGE FROM THE VET: **All exhibitors are advised carry a thermometer in their tack box.**

IMPORTANT FAIR DATES AND TIME

SATURDAY OCTOBER 1, 2022

7 AM-8 AM Rabbit show check in and weigh in
 9 AM Rabbit Judging, followed by showmanship, followed by Pee Wee Rabbit Showmanship

Vehicles may park in the Hannioans parking lot. Vehicles may not park on the fair grounds. All drivers must drop off animals and remove vehicles immediately.

SUNDAY & MONDAY OCTOBER 2-3, 2022

8 AM-1PM All chapters/clubs may set pens and tack.
 Please call the livestock office prior to arrival. No trucks or trailers will be allowed to park on grounds for longer than it takes to unload tack.

SUNDAY OCTOBER 2, 2022.

Scheduled Times will be given for inspection.

7 AM – 11AM Poultry Inspection/ Weigh in/Coop in
 Inspection to be held in Butler Chance parking lot.
2 PM Meat Pen Judging Poultry

MONDAY OCTOBER 3, 2022

8 AM Breeding Poultry followed by Market Laying Hens
9 AM Poultry Showmanship, followed by Breeding Bird Showmanship
4 PM Dog Show Main Arena

TUESDAY OCTOBER 4, 2022

Week 1 Champion of Excellence **ENTRIES DUE**

6AM-2PM Haul in: Dairy Cattle, Dairy Goats, Pygmy Goats
4-5 PM **Weigh In** Dairy Market Goats
5:30 PM **Pregnancy and Soundness check** for all Dairy Replacement Heifers and Soundness check for Prospect Dairy Replacement Heifers
 Dairy Replacement Does Pregnancy and soundness check Following Dairy inspection

WEDNESDAY, OCTOBER 5, 2022

8 AM **JUNIOR DAIRY GOAT SHOWMANSHIP**
 4-H/Independent, followed by FFA/Independent, followed by Dairy Goat Breeding, followed by showmanship followed by **REPLACEMENT DOE SHOW**
 (THIS WILL BE A SANCTIONED JR. DAIRY SHOW AGDA RULES WILL APPLY)

DAIRY MARKET GOAT SHOW
 4-H/Independent, followed by FFA/Independent, followed by Feeders, Bred by Exhibitor, Pen of 2, and Group Classes.

THURSDAY, OCTOBER 6, 2022

8 AM **DAIRY CATTLE SHOW**
 4-H /Independent, followed by FFA/Independent, followed by Registered Heifer Classes and Breeding Classes

10 AM **JUNIOR PYGMY GOAT SHOWMANSHIP.**
 FFA/Independent followed by 4-H/Independent, followed by Pygmy Goat Breeding
(PYGMY GOAT RING)

12 PM Dairy Milk Cow Classes
2 PM **REPLACEMENT HEIFER SHOW**
5 PM Pee wee Dairy Cattle Showmanship-
5:30 PM Pee wee Dairy & Pygmy Goat Showmanship

FRIDAY, OCTOBER 7, 2022

8 AM-4 PM SANCTIONED OPEN DAIRY GOAT SHOW IS BACK (2 RINGS)!!

4 PM-6 PM Champions of Excellence Interviews

SATURDAY, OCTOBER 08, 2022

PHASE 1 OF THE JUNIOR LIVESTOCK AUCTION FEATURING:

9:00 AM Market Fur and Feathers Auction

4:30 PM Dairy Buyer Dinner

6:30 PM Dairy Replacement Heifer & Doe Auction

8:00 PM Dairy Heifer, Dairy Cattle Haul, Dairy doe haul out after Sale.

All animals must have haul out slips prior to exiting the grounds.

ALL AUCTION LIVE PICK UP ANIMALS ARE AVAILABLE FOR RELEASE UPON THE COMPLETION OF THE AUCTION. ALL LIVE PICK UP ANIMALS MUST BE PAID IN FULL IN ORDER TO LEAVE THE GROUNDS.

SUNDAY, OCTOBER 9, 2022- BARN CLOSED TO PUBLIC

6 AM-8 AM LIVE PICK UP-AUCTION ANIMALS

9 AM Week One Round Robin

11 AM Release of all Junior Pygmy Goats & Remaining Animals following Round Robin

5 PM TACK HAUL IN FOR CATTLE

MUST HAVE APPOINTMENT TO ENTER THE BARN

ALL stalls and Fur & Feathers pens must be cleaned prior to release

MONDAY, OCTOBER 10, 2022

6 AM – 2 PM Scheduled haul in by school, club, and Independents

**5PM WEIGH IN Market Goats - club/chapter list to be posted with approximate times
NO FAXED COPIES WILL BE ACCEPTED**

6PM MANDATORY LEADERS, PARENTS, AND ADVISORS MEETING-MAIN ARENA

7 PM Sheep/Beef Lead commentaries are due & costume commentaries

You may email them to: livestock@fresnofair.com

7 PM *IMPORTANT* LATE SHOWMANSHIP ENTRIES CLOSE

\$25.00 LATE FEE+ENTRY FEE

TUESDAY, OCTOBER 11, 2022

6 AM-10 AM WEIGH IN Beef, Sheep, and Swine

3 PM Sheep and Beef Lead /costume practice run through location to be announced.

5:30 PM Carolee Boele Memorial Sheep Lead Competition followed by the costume contest.

WEDNESDAY, OCTOBER 12, 2022

8 AM MARKET LAMB SHOW

FFA /Independents, followed by 4-H /Independents, Feeders, Bred by Exhibitor, Pen of 2 and Group Classes will be judged after each division.

8 AM MARKET BOER GOAT SHOW

FFA/Independent, Followed by 4-H/Independent, Market Boer Feeders, Bred by Exhibitor, Pen of 2, and Group Classes will be judged after each division.

8 AM MARKET HOG SHOW

FFA/Independent followed by 4-H/Independent, Bred by Exhibitor, and Groups will be judged after each Division.

8 AM BEEF SHOWMANSHIP

FFA/Independent, followed by 4-H/Independent, followed by Junior Breeding Classes. Cattle should be clean and blown out products are not needed for showmanship.

There will be a break between Breeding and Market.

1 PM **MARKET BEEF SHOW**
FFA/Independents, 4-H/ Independents, Bred by Exhibitor, and Groups will be
judged after each Division, Followed by All Feeder Steers/Heifers.
6:30 PM **SELECTION OF ALL MARKET CHAMPIONS EVENT**

THURSDAY, OCTOBER 13, 2022

8 AM **Swine Showmanship**
4-H/Independents, followed by FFA/Independents, followed by Breeding Swine
Classes, followed by Feeder Classes
8 AM **Sheep Showmanship.**
4-H/Independent, followed by FFA/Independent, followed by all Junior Breeding
Sheep
8 AM **Meat Goat Showmanship**
4-H/Independent, followed by FFA/Independent, followed by all Junior Breeding
Goats.
4 PM **BEEF Lead Class**
6 PM **PEEWEE Sheep Showmanship followed by PEWEE Meat Goat showmanship**
Pre-Entry Required!

FRIDAY, OCTOBER 14, 2022

9 AM **ROUND ROBIN**
FFA/Independent, 4-H /Independent Round Robin
4:30PM-6 PM **Champions of Excellence Interviews**
PAINT BRANDING OF SALE ANIMALS- (Paint branding will begin as soon as the
sale order has been finalized). A representative of your club must be present until
animals are paint branded.

SATURDAY, OCTOBER 15, 2022

8 AM **PHASE II OF THE JUNIOR LIVESTOCK AUCTION AWARDS CEREMONY**
9 AM **Sale of Champions**
Followed by Goats & Swine Ring #2
Beef & Sheep Ring #1

SUNDAY, OCTOBER 16, 2022

6 AM - 8 AM **RELEASE OF LIVE PICK-UP AUCTION ANIMALS & BREEDING HOGS**
12PM **Registration for Barnyard Olympics**
1PM **Barnyard Olympics/\$20.00 per Team**
4 PM – 8 PM **Release of All animals-time subject to change.**

RELEASE FORMS ARE AVAILABLE IN THE LIVESTOCK OFFICE
REMEMBER, YOU MUST GO THROUGH THE STAGING AREA BETWEEN 4 PM AND 8 PM

MONDAY, OCTOBER 17, 2022

**ALL WATER SYSTEMS MUST REMAIN UNTIL MONDAY OCTOBER 17. Parents, leaders, advisors
may pick up water systems, or items left behind after 11:00 AM.**

**ALL MARKET ANIMALS HALTERS, NECK ROPES, WATER SYSTEMS; NECK CHAINS SHOULD BE MARKED
WITH NAMES AND PHONE NUMBERS. IT IS THE EXHIBITORS RESPONSIBILITY TO PICK UP ALL ITEMS.
ITEMS LEFT AFTER 10 DAYS WILL BECOME PROPERTY OF THE BIG FRESNO FAIR.**

2022 MARKET WEIGHTS FOR ALL SPECIES

BEEF

Feeder Beef 400 LBS. - 999 LBS.
 Market Beef 1000 LBS.-1400 LBS.
 Heavy Weight Beef 1401 LBS. -1450 LBS. Pay weight is only to 1400

SWINE

Feeder Pigs 209 LBS. & BELOW
 Market Hogs 210 LBS. 280 LBS.
 Max Weight 280 LBS.
 SUPER HEAVY WT. 281 LBS - 300 LBS.
 Not Eligible for sale

(Super heavy wt. hogs will not be eligible for sale, however they will be allowed to show on Thursday after the Showmanship classes)

SHEEP

Feeder Lambs 99 LBS. & BELOW
 Wether or Ewes 100 LBS.-150 LBS.
 Super Heavy Weight 151 LBS. & OVER

GOATS

Feeder Goats 59 LBS. & BELOW
 Wether OR Doe Kids 60 LBS.-105 LBS
 Super Heavy Weight 106 LBS.-& OVER

**Resale Goats will pay to 105 pounds
 All Champion Meat Goats must be sold as Custom if they are over 86 pounds.**

All Sheep and Goats will have teeth checked for age verification & Health verification at the scale.

**ALL SHEEP AND GOATS MUST BE SLICK
 SHEARED
 PRIOR TO ENTERING THE FAIRGROUNDS NO
 EXCEPTIONS
 THEIR WILL BE NO BODY CLIPPING DURING
 THE FAIR.
 LEG WOOL AND HAIR MAY BE LEFT**



**BARNYARD OLYMPICS
 \$20.00 per Team**

**Sign-up sheets will be at the front counter in the livestock office.
 All proceeds are used to pay the Carole Boele Scholarships.**

2022 ENTRY FEES SCHEDULE FOR ALL SPECIES

BEEF

Breeding Beef	\$10.00
Market & Feeders	\$10.00
Showmanship	\$10.00
Chute Fees	\$15.00

SWINE

Market & Feeders	\$10.00
Breeding Swine	\$10.00
Showmanship	\$10.00

SHEEP

Production Ewes	\$10.00
Market & Feeders	\$10.00
Lads & Ladies Lead	\$10.00
Showmanship	\$10.00
Stand Fees	\$10.00

GOATS

Breeding Dairy Goats	\$10.00
Replacement Dairy Does	\$10.00
Dairy Goat Showmanship	\$10.00
Market & Feeders	\$10.00
Breeding Boer Goats	\$10.00
Boer Showmanship	\$10.00
Stand Fees	\$10.00

DAIRY

Registered Dairy	\$10.00
Grade Dairy	\$10.00
Dairy Replacement/Prospect Heifers	\$10.00
Showmanship	\$10.00
Chute Fees	\$15.00

<u>Bred by Exhibitor</u>	\$10.00
---------------------------------	----------------

PEE WEE CLASSES	\$15.00
------------------------	----------------

UNIFORM REQUIREMENTS & DRESS CODE



FFA MEMBERS

The Future Farmers of America is a national organization of students enrolled in high school vocational agriculture classes. The local unit is the chapter in each high school offering vocational agriculture under the supervision of the agriculture teacher who is always the local chapter advisor. The state unit includes all chapters of the state, under the supervision of the State Dept. of Education as represented by the Bureau of Agricultural Education, with its headquarters at the State Education Bldg., Sacramento.

The national unit is the group of associations in each state, and Puerto Rico, under the supervision of the Agricultural Education Div. of the U.S. Office of Health, Education and Welfare, Washington, D.C. Every Future Farmer project in livestock, poultry, fruit or crops, is part of the practical education of the vocational agriculture student who owns it. The program includes the improvement of agriculture leading ultimately to the ownership of the farms and the development of good rural citizenship. Participation in fairs and livestock shows is recognized as having educational value as well as stimulation for better results and finer projects under the supervision of the qualified chapter advisor and with the cooperation of the Fair Management. Exhibits must be from projects carried on by active members of the regular Future Farmers Chapters

The official FFA show uniform shall be worn by all FFA exhibitors and by helpers in individual and chapter groups while showing at fairs and livestock shows. The uniform shall consist of white trousers, white dress shirt or blouse (short or long-sleeved) with the FFA emblem attached to the left pocket, and the official FFA blue necktie for boys or FFA blue scarf for girls. The official FFA jacket is optional; if worn, the shirt emblem is not required. Hats or headgear of any kind shall not be worn with the official show uniform while showing.



4-H CLUB MEMBERS

4-H youth programs are non-formal voluntary educational programs under the supervision of the Cooperative Extension Service of the University of California and the Cooperative Extension Service of the University of California and the United States Department of Agriculture. They are a part of Extension teaching. The projects exhibited at fairs by members of these groups are the results of their efforts under the supervision of volunteer adults.

LOCAL 4-H UNIFORM

White or off-white trousers, white shirt, 4-H tie and hat for boys. White or off-white trousers or skirt, white shirt or blouse with 4-H tie or 4-H scarf and hat for girls. Show uniform requirement is determined by the 4-H organization.

4-H GENERAL APPERANCE: Hats must be worn on the 4-H members head in show ring. Baggy pants and spandex are not acceptable. White skirt or culottes may be worn by girls.

(The uniform requirements are set by the Fresno County Extension Office, not the Fresno Fair. Leaders and county staff are responsible for enforcing all uniform violations.)

INDEPENDENT EXHIBITORS

Independent junior exhibitors not affiliated with any organization can enter appropriate FFA or 4-H classes if they meet the age or grade level requirements. Fair Management can establish a separate class if there are sufficient entries. Juniors who have been FFA or 4-H members within 60 days prior to the fair are not eligible to compete as independent juniors (120 days for cattle). An intent to exhibit must be filed by the specified date.

Independent juniors entering market and breeding animals must provide Fair Management with a permanent tag and/or tattoo information 120 days prior to the fair for beef and dairy and 60 days prior to the fair for sheep, swine and goats. Independent exhibitors must have "on grounds" supervision by a competent adult at all times.

INDEPENDENT UNIFORM White shirt, white pants, closed toe shoes, and belt. No Head Gear.
REQUIREMENTS: ALL INDEPENDENT EXHIBITORS MUST FILL OUT FIRST AID FORMS AND SUBMIT THEM ON-LINE WITH THEIR ENTRIES!

BARN DRESS CODE Exhibitors

In addition to organizational requirements, The Big Fresno Fair requires that all exhibitors, wear closed toe shoes. Absolutely no sleeveless blouses or shirts, spaghetti straps, low-cut blouses, or bare midriffs. Pants should be fitted not to impede normal walking. NO pants may be worn lower than the hip area. NO shorts or spandex shorts will be permitted in the barn while animals and guests are present. Anyone in violation will be asked to cover up or change clothes. Any exhibitor that fails to follow directive to change attire, will be in violation of their code of ethics.

LOCAL RULES

ALL POLICIES AND DECISIONS OF THE LIVESTOCK DEPARTMENT WILL BE MADE IN THE BEST INTEREST OF THE FAIR, THE EXHIBITOR, AND THE PUBLIC.

Entry Policy: By signing and submitting an entry form the exhibitors and their agents, parents and leaders acknowledge and agree that they:

- a) Understand and have read these Local Rules and State Rules
 - b) Agree to abide by them as they are stated
 - c) Certify that all information on the entry form is true and accurate; and
 - d) Agree to comply with the fair's decision regarding any alleged violation of the State or Local Rules
 - e) In the event that it is determined there has been unethical treatment of animals or violation of state or federal regulations or of state or local fair drug policy rules, exhibitor names will be forwarded to F&E as well as given to the Network of California fairs and to appropriate government agencies.
 - f) The Big Fresno Fair reserves the right to publish, for its intended use, any and all photographs taken of exhibits entered in the Big Fresno Fair by official Fair Photographer &/or Fair Staff. Participants, Advisors, Leaders, Teachers, etc. approve the use of any photo taken on the fairgrounds upon submission of entry.
1. All junior exhibitors must be members of the following groups: Fresno County 4-H, a Fresno County FFA Chapter, or registered with the fair as an Independent junior exhibitor. All exhibitors must be full-time residents of Fresno County.
 2. 4-H, Independent, and FFA members must be supervised by an adult at all times while on the fairgrounds. All supervisors must be listed on credential forms and have wristbands. Adult supervisors must follow all of the Local and state rules.
 3. Junior exhibitors are expected to groom and care for their animal(s) when at the fair. They shall refrain from accepting assistance from adults and non-exhibiting youth unless the junior exhibitor is actively engaged, and the assistance is only for instruction. Local fair rules will determine enforcement. Exception to this rule. An exhibitor that has a medical condition or physical disability that inhibits

his/her safety. This will be at the discretion of the Livestock superintendent.

4. Junior exhibitors who, for **extraordinary reasons**, cannot fit and/or show their animals must make arrangements for their fitting, care and showing that are acceptable to the Fair's Livestock Management, prior to the date for judging, or be disqualified from competition. Contact the Livestock Office to make these arrangements and receive prior permission in writing.
5. ALL MARKET LAMBS, AND GOATS MUST BE SLICK SHEARED PRIOR TO ENTERING THE FAIRGROUNDS. No animal that shows any evidence of any active, unsightly or communicable disease, or any unsightly disease or other condition shall be admitted or allowed to remain on the fairgrounds. Wet towels, ice, cool brace, or other such products will not be allowed at any time. Blankets/tubes, may be used, but may not be used at ringside unless weather requires blanketing for warmth.
6. Exhibitors are expected to properly water and feed their animals, including those that sold in the Junior Livestock Auction, through Sunday, October 9, 2022, or through Sunday, October 16, 2022. You must sign **IN AND OUT**, LISTING the pens and stalls for which you are responsible. **NO EXCEPTIONS.** Sign-in forms are available in the Livestock Office. Removing animals prior to posted release time without written permission from Fair Livestock Management will result in forfeiture of premiums, probation for a minimum of 1 year and possible banning from the fair in the future.
7. To exhibit as a 4-H member, one must be 9 years old by December 31, PRIOR YEAR, and may exhibit UNTIL AGE 19, DECEMBER 31 OF THE CURRENT YEAR. **EXHIBITORS ARE ONLY ALLOWED TO EXHIBIT ONE FAIR AFTER GRADUATION!!**
8. No family member, advisors, or leaders will be allowed in the ring once a show has begun. Anyone impeding the flow of exhibitors entering the show ring will be asked to leave the area.

2022 STATE RULES FOR CALIFORNIA FAIRS

Mailing Address: 1220 N Street, Sacramento, CA 95814

Phone: (916) 999-3000

Fax: (916) 999-3001

<https://www.cdfa.ca.gov/FairsAndExpositions>

9. Independent junior exhibitors who are not FFA or 4-H members will enter appropriate FFA or 4-H classes. They must meet the following age requirements:
 - a. Exhibitor must be 9 years of age on January 1, of current year.
 - b. Exhibitor must not be older than 19 years of age on January 1, of current year. This age is for Fresno Fair Local Rule only.
 - c. Independent exhibitors 9 years old or in the 4th through 8th grade by January 1, of current year, will be combined with 4-H. Independent exhibitors in the 9th through 12th grade and not older than 19 will be combined with FFA.
10. All Independent exhibitors must provide an intent to exhibit by June 1, of current fair year. All Independent exhibitors must provide a completed and closed out Record Book by December 31 of current fair year, in order to continue exhibiting as an independent exhibitor in the future. Independent Summary Sheet & Record books are available in the Livestock Office.
11. Exhibitors may switch from one organization to another organization or to independent status ONCE during a calendar year and must be separated from their previous status 120 days in the case of beef and dairy cattle, and 60 days in the case of sheep, swine, goats and small animals.
12. No junior exhibitor may exhibit an animal in a market class once it has been sold as a market animal through a fair junior livestock auction. These animals may be shown following the 30 consecutive day ownership requirement as breeding animals only. All champion and reserve champion market animals will be sold as a terminal sale with no live animal pick-up. All champions must be shipped to a slaughter facility.
13. Animal projects must be owned solely by and under the exhibitor's care and management and under the supervision of the organization in which the project will be shown as specified below. The official ownership date is the date shown on the receipt of sale unless the animal was bred by the exhibitor. The days are counted prior to the opening day of the fair unless the event in the case of horse shows is held separately from the Fair. Ownership must be maintained through show date(s) of fair or event. Breeding animals that are not solely owned by an exhibitor do not meet ownership

requirements to exhibit as a junior livestock project.

- a. Market animals: Beef - 120 consecutive days; and 60 consecutive days for swine, sheep, and goats.
- b. Breeding and feeder animals: 30 consecutive days.
- c. All small market animals (Rabbit and poultry): 30 consecutive days.

Proof of Ownership shall consists of: Brand Inspection Certificate in the Exhibitor's Name issued at time of original purchase; or Sale billing in the exhibitor's name; or Completed Bill of Sale to the exhibitor with a state brand inspector's authorization of release for inspection at destination. The request for verbal release must be made by the seller prior to the exhibitor taking custody of the animal and include the date, inspector's name and phone number.

The animal may not be resold without physical brand inspection.

Substitutions can only be accomplished within a division. Substitutions must be made when the exhibitor arrives on the fairgrounds. All changes may be made in the livestock office a minimum \$15 penalty must be paid 24 hours prior to judging for each substitution made by the exhibitor in excess of two in the division. State rule #5 page 6 of the CDFA rules.

Substitution for any animal is at the discretion of the livestock office. No animal will be replaced or substituted 30 days prior to the weigh in date at the fair. All substitutions will be charged a \$15.00 re-entry fee.

14. Original Registration Certificates, or a duplicate of the **Original** Registration Certificate from a Breed Association, must be presented to the Livestock Office when exhibitors are checking in their animals at The Big Fresno Fair. Photocopies or any other form of duplication of original documents are not eligible.

Cattle, swine, sheep and goats entering the State of California require an official Certificate of Veterinary Inspection, individual identification, and a California entry permit issued by the AHFSS, CDFA.

ENTRIES WITHOUT PROPER DOCUMENTATION WILL BE DISQUALIFIED!

15. STAGING AREA : All FFA, 4-H and Independent exhibitors MUST GO TO THE STAGING AREA at the corner of and Cedar & Butler Hanoians Lot and will then be moved up to the fairgrounds through the Livestock Butler Avenue gate.
SEE STAGING AREA MAP PAGE 3.

16. All animal pens or stalls shall be cleaned not later than **9:00 AM** every day. Pens and stall areas should be kept clean during show days. Pens and stalls should be ready for exhibit at all times while the barn is open to the public 10am-8pm.

17. Feed and/or bedding must not be stacked any higher than the tie stall fences and/or pens. There must be a two-foot clear air space with the exception of educational displays (refer to Herdsmanship rule) above all tie stalls and pens. No netting or shade cloth will be allowed in stall areas. Shavings or Straw may be used to bed animals.

18. Educational displays may not be attached to wood, plastic, or metal by screws or nails. Signs may not be attached to overhead water lines. Lattice type material will only be allowed, in order to keep air flow moving through the barn. If educational materials obstruct security cameras, fair staff may ask exhibitors to modify materials.

19. All alleyways must be kept clear and gates closed. Walkways may not be fenced off, by order of Fire Marshall. Locks may not be used on gates.

20. Signs will not be permitted advertising exhibits "For Sale."

21. No Generators will be allowed in the Barns at Any time.

23. Community water troughs will not be permitted in tie-stall areas to ensure the health of animals and the public. In-line water systems for swine/ Dairy cattle must be fully functioning at all times. If in-line water systems are not fully functioning (no leaks allowed), exhibitors will be instructed to remove/repair the system in favor of providing adequate water for the animals. Dairy cattle from the same school or ranch may use watering troughs, but they **may not impede the flow of traffic. Any damage caused by any malfunctions will be the responsibility of the exhibitor that owns the**

system. Straw, feed, shavings, any other damage.

24. All market and feeder animals must be weighed. Check the Livestock Schedule for official weigh-in times. All animals must be brought to the scales by the exhibitor or A MEMBER OF THE SAME FAMILY, CHAPTER, OR CLUB for official weigh-in. **CATTLE WHICH CANNOT BE CONTROLLED BY THEIR HANDLER WILL BE EXCUSED FROM THE FRESNO FAIR BY THE LIVESTOCK SUPERINTENDENT.** ALL MARKET ANIMALS MUST HAVE EAR TAG IN PLACE IN ORDER TO WEIGH IN. SHEEP AND GOATS MUST HAVE SCRAPIES TAGS IN THEIR EARS AT THE WEIGH IN TIME.

WE CANNOT SHIP ANIMALS WITHOUT THE PROPER EARTAGS. \$50.00 WILL BE DEDUCTED FROM MARKET CHECKS IF EAR TAGS/SCRAPIE TAGS ARE REMOVED OR COLORED!

25. All market animals must be tagged in order to exhibit at The Big Fresno Fair. The Sheep and Goats are using BFF assigned RFID tags. Staff, Ag advisors, leaders, parents, may tag animals. **Tags will be replaced at a charge of \$10.00. For EID TAGS & \$5.00 for NON EID tags.**

26. **DRENCH DEVICES ARE NOT ALLOWED TO BE ON THE FAIRGROUNDS AT ANYTIME!** Artificial means of filling animals is prohibited. Drench guns, stomach pumps and/or any mechanism used to artificially fill or provide a liquid diet (drench) are not allowed. Any exhibitor in violation of this rule will be subject to disqualification and/or loss of premiums. There can be no drenching or tubing of any livestock with any product (i.e. show pastes, calf calm, tryptophan, or any substance that may alter the behavior or appearance of the animal). Any deviation from product description must be approved by the Fresno Fair Veterinarian. All equipment left more than 10 days after the close of the fair will become the property of The Big Fresno Fair Livestock Department.

27. All exhibitors will clean pens prior to receiving a release form from the livestock office.

28. Late showmanship entries: Only on haul in date may a late entry for showmanship be accepted at a fee of \$25.00 plus original entry fee. It is the Advisor, Exhibitor, and parents responsibility to make sure that exhibitors are entered.

WRISTBANDS/PARKING PASSES

May be purchased with entries/please note you will still need to submit forms to the livestock office with names of siblings, parents, and grandparents. Please attach a copy of your receipt to the form. You may email it to livestock@fresnofair.com

Community Club Leaders: Leaders list must be sent to Livestock Office by **September 2, 2022**, to ensure participating leaders wristbands. You must email it to livestock@fresnofair.com FFA Advisor wristbands will be issued according to lists obtained from school administration.

Checks that are returned for NON-SUFFICIENT FUNDS for any payments to The Big Fresno Fair (wristbands, parking passes, auction etc.) are subject to a \$35.00 fee for each check.

Wristbands will be issued at the following rate:

- a. Exhibitor – 1 wristband, no charge.
- b. Parent Leader of an Independent 1 wristband, 1 parking pass. No Charge
- c. Leader – 1 wristband, 1 parking pass, limit two leader wristbands/parking pass per species, per club exhibited, no charge.
- d. Advisor – 1 wristband/parking pass per advisor of a school, no charge.
- e. **PREORDERED WRISTBANDS:** Wristbands will be available for purchase for:
Parents - \$18 each, limit 4 per family.
Siblings - \$12 each, ages 7-19 (not showing).
Grandparents - \$15 each, limit 4.
Parking - \$25 each, limit 2 per family.
All wristbands ordered after September 16, 2022 will be sold at an increased rate.
CASH OR CREDIT CARD ONLY after 9/16/22
- f. The wristbands cannot be mailed, nor can they be given to anyone other than the person who ordered them. All pre-ordered wristbands will be available to be picked up September 26-October 3, 2022 between the hours of 8 AM, and 3PM. Excluding weekends and holidays,
- g. All wristbands must be picked up prior to opening day of the Fair, Wednesday, October 5, 2022. This includes all 4-H/FFA/Independents, Clubs and Chapters.
- h. If an exhibitor's wristband is confiscated at the gate the exhibitor will be charged \$30.00 for a new band. The wristbands are for the convenience and safety of the exhibitors. Wristbands should not be shared or given to any other person.

PARKING PASSES GIVE YOU PARKING PRIVILEGES. FLAGGERS WILL BE IN THE LOT TO SHOW YOU WHERE TO PARK. IF AN ATTENDANT IS NOT IN THE LOT UPON ARRIVAL PLEASE PARK IN THE MARKED STALL AREAS. TRUCKS WITH TRAILERS SHOULD PARK IN THE BACK OF THE LOT IN THE DESIGNATED TRAILER/TRUCK AREA. TRAILERS MAY NOT PARK OVERNIGHT. PLEASE ADVISE THE LIVESTOCK OFFICE IF YOU HAVE AN EMERGENCY OR NEED TO LEAVE YOUR TRAILER. THIS IS NOT THE LOT TO LEAVE IT.

SEE FILLABLE MANDATORY FORM AT WWW.FRESNOFAIR.COM

JUNIOR LIVESTOCK AUCTION RULES

**NO CASH AWARDS WILL BE PAID ON ANY ANIMALS
IN THE MARKET AND REPLACEMENT DIVISIONS.**

General Information

1. All animals entered in the 4-H/Independent, FFA/Independent market divisions that are judged as market ready, as listed in the Exhibits Handbook, shall be eligible for auction.
All 4-H/Independent, FFA/Independent Grand Champions and Reserve Grand Champions must be sold by the owner at the auction. All animals shall be sold, alternating between the 4-H/Independent, FFA/Independent exhibitors. Animals shall be judged under the American System of Judging by division for sale order.
2. The owner of the animal shall bring the animal to the auction ring at the time of sale in order to be sold. Only Exceptions Will Be Made Except In Extreme Emergency, Cow Palace, And School Sports. Arrangements Must Be Made Prior To Auction Time, In Writing.
3. Animals exceeding top weight limits will be allowed to show in a super-heavyweight class in each species, **excluding swine**. For the purpose of the auction, all animals in the super-heavyweight division will sell at the top listed SPECIES WEIGHT, NOT THE WEIGHT RECORDED AT THE SCALES.
3. All meat/milk producing livestock that has been given any medication must meet the proper withdrawal period to be eligible for the Livestock Auction. All medications must be provided and administered by the Fresno Fair veterinarian for the duration of the fair. No natural or unnatural substances may be administered that may alter the temperament of an animal. If found in violation of this rule exhibitors will be removed from the sale. All exhibitors will sign a drug release form at the time of weigh in.
4. The Livestock Department shall arrange the order of sale after completion of judging.
5. A six (6) percent sales commission will be charged to defray cost of the auction.
6. The Junior Livestock Auction will consist of two phases.

Phase I will be held Saturday, October 08, 2022, beginning at 9:00 AM, starting with Sale of Champions, Fur & Feathers, Meat, Dairy Replacement Does and Dairy Market Goats. Starting at 6:30 PM the Dairy Prospect and Replacement Heifer auction will be held. SALE MAY BE HELD VIRTUALLY OR IN PERSON DEPENDING ON STATE RESTRICTIONS.

Phase II will be held Saturday, October 15, 2022, beginning at 8:30 AM featuring the Sale of Champions followed by Market Beef, Sheep and Swine. SALE MAY BE HELD VIRTUALLY OR IN PERSON DEPENDING ON STATE RESTRICTIONS.

**The Phase II sale will be held in two rings.
Ring II will feature a Sale of Champions to
start the Auction.**

MARKET ANIMALS WILL CONSIST OF:

- | | |
|----------|-------------|
| 1. Beef | 5. Rabbits |
| 2. Sheep | 6. Chickens |
| 3. Swine | 7. Turkeys |
| 4. Goats | |

REPLACEMENT ANIMALS WILL CONSIST OF:

1. Dairy Replacement Heifers
2. Dairy Prospect Replacement Heifers
3. Dairy Goat Replacement Doe
4. Laying Hens
7. All division grand champion and reserve grand champion market animals in 4-H/independent, FFA/independent, including beef, swine, sheep and all goats (Dairy, Boer/Meat Goat) will BE DEEMED terminal sales only. These animals will be shipped directly from the fairgrounds to a processing facility. There will be no resale other than to a processing plant. THESE ANIMALS CAN NOT BE PICKED UP OR GIVEN BACK TO THE EXHIBITORS.

8. **Replacement of auction checks and/or premium checks:** If an auction check or premium check which has been issued to an exhibitor has been destroyed or lost by the exhibitor or his/her agent, **a replacement check can be issued after a stop payment has been made and a fee of \$50.00 has been deducted.** ANY CHECK \$25.00 AND UNDER WILL NOT BE REPLACED. ALL FFA/4-H CHECKS MUST BE PICKED UP FROM THE EXHIBITS OFFICE. CHECKS WILL NOT BE MAILED.

9. Junior Livestock Auction animals must be sound on all feet and legs at the time of weigh-in, show, sale, and shipping. Animals not fit to show, ship or sell will be disqualified and sent home immediately.

ANY MEDICAL CONCERNS MUST BE BROUGHT TO THE ATTENTION OF THE LIVESTOCK OFFICE AND FAIR VETERINARIAN IMMEDIATELY.

10. **All Auction Buyers must fill out a Buyers application/or register on line** to be eligible to participate in the Phase I and II Junior Livestock Auctions. Credit will only be extended to buyers that have previously purchased from the junior livestock auction and have a good record of payment.

FRIDAY, OCTOBER 28, 2022
ALL ADD-ONS MUST BE PAID BY 4 PM
All unpaid Add Ons will be dropped if not paid by the above dates

11. Payments for all animals purchased at the junior livestock auction or the dairy replacement heifer auction are due at the time of purchase, unless otherwise instructed. Virtual auction buyers will be billed as soon as the sale has been verified.
12. The Junior Livestock Auction of The Big Fresno Fair is managed entirely by fair staff and volunteers. Auction checks will be issued to the seller when all buyers/ ADD-ONS of their lot have paid in full. Prompt payment by buyers is appreciated. If an add on buyer has not paid their bill in full by the close of business on October 28, 2022, this buyer will be dropped for non-payment and will have to pay in cash if they wish to continue as a buyer. **Credit cards are acceptable forms of payment as well as cash and check.**

13. If a buyer has not established a credit relationship with the Big Fresno Fair, any live pick-up animals purchased by that buyer MUST be paid in full, before the animal(s) can be removed from the fairgrounds. IF A BUYER HAS BEEN DEEMED A SLOW PAY THEY MUST PAY IN FULL BEFORE REMOVING ANY ANIMALS FROM THE GROUNDS.

14. **Checks that are returned for NON-SUFFICIENT FUNDS for any payments to The Big Fresno Fair (entries, wristbands, parking passes, auction, etc.) Will be charged a \$35.00 fee for each check.**

15. **ONLY SALE ANIMALS** that have gone through the Junior Livestock Auction and are live pick up, will be allowed to leave early. All paperwork must be completed, and proof of payment presented to the livestock office, and then release form will be granted to the owner/agent/hauler of the animals listed on sale invoices.

Phase I:

All Live Pick-Up animals will be released after completion of the sale or may be picked up between the hours of 6AM and 8 AM Sunday October 9, 2022. All live pick up animals must be paid in full before they will be released. A pink slip and receipt are required. **No trailers will be allowed in the barn until completion of sale.**

Phase II:

All Live Pick-Up animals will be released Sunday, October 16, 2022 between 6:00 AM and 8:00 A.M. OR AFTER 5PM. (Please make sure buyers are aware that live pickup means they must haul their own animals home or make arrangements to have their animals hauled.)

16. **CHANGE IN DISPOSITION MAY only be accomplished in the Livestock Office during a 1 hour period following the completion of either Phase I or Phase II of the Junior Livestock Auction.**
17. Market/Replacement animals are not eligible for cash (premiums) awards. ALL EAR TAGS MUST BE LEFT IN ANIMALS EARS. **Removal of ear tags will result in a \$50.00 fine, and will be deducted from sale checks.** Animals cannot be shipped without proper ear tags.

**The Harvest Plants WILL NOT save/sell
hides, heads, or any other parts under any
circumstances!**

18. Required Documents: A DATED BILL OF SALE OR BRAND INSPECTION FROM THE Breeder or agent/owner (draw brand and state location of brand) of all beef animals and dairy replacement heifers must be presented to the Livestock Department when entries are due. Bill of Sale can be picked up after the show for animals not consigned for the junior livestock sale.
19. A brand inspection fee and beef promotion fee will be deducted for beef and dairy cattle. A pork promotion/American Lamb board fees will be deducted on all swine & Lambs sold.
20. Mortality of all animals sold will be the seller's responsibility until the animals are harvested.
21. Market steers, heifers, goats will be left with neck chains, neck ropes, and halters. Dairy replacement heifers and does will be paint branded. Halters, neck ropes, and collars should be marked with exhibitor names and clubs.
(Twine or wire wrapped around the animal's neck is not acceptable. A species representative will check for a neck chain before a release will be given. A 25.00 CHARGE WILL BE DEDUCTED FROM THE SALE PROCEEDS IF CHAINS ARE NOT ON GOATS. NECK CHAINS MUST BE ADJUSTED TO KEEP FROM SLIPPING OFF.)
22. **Intention of No Sale:** Exhibitors with two or more Blue or Purple Ribbon market animals, AND you do not wish to sell Blue or Purple Ribbon market animal, must file an intent of no sale. If this is not done, the **lightest animal** will be catalogued for sale. No Exceptions to this rule. The exhibitor must file an intent of no sale as soon as they have finished showing market classes. Exhibitors must have the ear tag and RFID information in order to complete the form. It is the responsibility of the exhibitor, advisor, or parent to properly and accurately fill out all paperwork. If the wrong tag is entered on the intent of no sale the animals listed will sell.
23. **WITHDRAWAL FROM THE SALE** there will be a **\$75.00 NO SALE FEE** for a single market animals in order to defray the administration, awards, and judges expense of market classes. Exhibitors having two animals may remove one from the sale without a fee. **If an exhibitor has two animals entered and chooses not to sell either animal both animals will be charged a 75.00 fee.**

MARKET ANIMAL SCORECARDS

Note to Fair Management: See also IV-3. "State Judging Standards" are to be used where applicable. Fairs may allow for additional grouping systems within the Market Ready or Market Acceptable for sale purposes.

MARKET HOG SCORECARD

GRADE

Market Acceptable: U.S. No. 1 and No. 2 hogs of average or greater conformation that are acceptable in leanness, muscularity, and production traits.

Not Market Acceptable: Any hog of below average conformation including U.S. number 3, U.S. number 4 and utility grade hogs.

MARKET LAMB SCORECARD

GRADE Market Ready: USDA Prime or Choice quality with 12th rib back fat range .16-.35, average or greater conformation and cutability.

Not Market Ready: Good or lower quality grade with 12th rib back fat range <.16 or >.35; under finished lambs grading USDA good or lower, below-average conformation or cutability.

MARKET BEEF SCORECARD

GRADE Market Ready: Market steers projected to have sufficient fat deposition to meet the marbling specifications for USDA Prime, Choice, or Select+ quality grades.

Not Market Ready: Market steers lacking evidence of sufficient fat deposition to produce a desirable consumer product. Steers projected to grade USDA Select - or lower.

MARKET GOAT (CHEVON) SCORECARD

GRADE Market Ready: USDA Prime or Choice quality with 12th rib back fat range .08-12 most desirable, .13-.22 back fat acceptable, average, or greater conformation and cutability.

Not Market Ready: Good or lower quality grade with 12th rib back fat range <.08 or >.22; under finished goats grading USDA good or lower, below average conformation or cutability.

HERDSMANSHIP

ENTRY FEE

NONE

NO PRE-ENTRY REQUIRED

AWARDS OFFERED PER CLASS FOR DIVISIONS 1690 & 1691 & 1692

DIVISION 1690 FFA HERDSMANSHIP SWEEPSTAKES

DIVISION 1691 4-H HERDSMANSHIP SWEEPSTAKES

DIVISION 1692 INDEPENDENT HERDSMANSHIP
SWEEPSTAKES

HERDSMANSHIP GUIDELINES

1. There must be a 2-foot clear space above the tie stall backs and pen tops for circulation and security.
2. Herdsmanship may contain educational portions. It is important for all exhibitors to become familiar with the Exhibits Handbook. Ten points may be added or subtracted for answers to educational questions.
3. It is expected that exhibitors will be actively involved in cleaning their pens and stalls. Dairy Cattle, Pygmy, and Dairy Goat Herdsmanship will be judged Wednesday, October 5, 2022 through Sunday, October 09, 2022 until 10 AM. Beef, Sheep, Meat goat, and Swine Herdsmanship will be judged Wednesday, October 12, 2022 through Sunday, October 16, 2022 until 12 noon.
4. Failure to cooperate with state or local rules or instructions from management **WILL** result in a 0 (zero) in Herdsmanship. Pens should look neat and clean at all times while the fair is open to the public
5. **All pens and stalls must be cleaned by 9 AM. Pens must be ready for view at 9AM.** The fair has many early opening days. Please have your area ready for the public. It is the intent of the Livestock Department to make sure animals are housed and maintained in a clean, healthy and safe environment. Pens will be routinely inspected.

AREAS SHOULD NEVER LOOK UNPREPARED OR UNPROFESSIONAL.

Failure to cooperate with state or local rules or instructions from management will result in a zero and possible loss of premiums or removal from the grounds.

HERDSMANSHIP SCORECARD

CLUB/CHAPTER/INDEPENDENT IDENTIFICATION SIGNS MUST BE DISPLAYED IN ORDER TO BE ELIGIBLE FOR COMPETITION.

1. CLEANLINESS ANIMALS	10%
2. CLEANLINESS OF STALLS OR PENS	40%
3. CLEANLINESS AND ARRANGEMENT OF ALL EQUIPMENT	15%
4. NEATNESS AND ARRANGEMENT OF FEED ON HAND	15%
5. HEALTH AND SANITATION OF THE EXHIBIT	15%
6. EDUCATIONAL MATERIAL OR DISPLAY INCLUDED WITH ANIMAL DISPLAY	5%

TOTAL 100%

4-H AND FFA CHAMPION OF EXCELLENCE

OBJECTIVE: TO REWARD THE 4-H AND FFA MEMBERS THAT HAVE UTILIZED THEIR LIVESTOCK AND SMALL ANIMAL PROJECTS TO THE FULLEST TO LEARN ABOUT SPECIES KNOWLEDGE AND SKILL, AND DEVELOP THEIR OWN PERSONAL ABILITIES IN COMMUNICATIONS AND LEADERSHIP. EMPHASIS IS PUT ON THE WORK THEY HAVE DONE WITH THEIR PROJECTS TO EXHIBIT THEM IN THE BEST MANNER.

PROCESS: ENTRY FORMS WILL BE TURNED INTO THE FRESNO FAIR LIVESTOCK OFFICE BEFORE THE DEADLINE TO BE INCLUDED. AN INTERVIEW WITH THREE PEOPLE WILL BE SCHEDULED DURING THE FAIR. EACH ENTRANT WILL BE SCORED USING THE SCORECARD BELOW. THE CHAMPIONS IN EACH SPECIES WILL BE ANNOUNCED AND AWARDED AT THE LIVESTOCK AUCTION.

SPONSORED BY FRESNO MADERA FARM CREDIT SERVICES
CHAIRPERSON MARK THOMPSON

DAIRY CATTLE

DAIRY, BOER AND PYGMY GOATS

SMALL ANIMALS

ENTRIES ARE DUE OCTOBER 3, 2022, 4 PM

BEEF, SHEEP AND SWINE

ENTRIES ARE DUE OCTOBER 10, 2022, 4 PM

ENTRY FORMS MUST BE TURNED INTO LIVESTOCK OFFICE

CHAMPION OF EXCELLENCE JUDGING SCORECARD

<u>CRITERIA</u>	<u>POSSIBLE POINTS</u>
FAIR PARTICIPATION	
PARTICIPATION IN SHOWMANSHIP	10 PTS
PARTICIPATION IN MARKET CLASSES	10 PTS
PARTICIPATION IN BREEDING CLASSES	20 PTS
EXHIBITOR INTERVIEW	60 PTS
PRESENTATION OF ANIMAL	
SCIENCE KNOWLEDGE AND SKILL	25 PTS
RECORD BOOK REVIEW	5 PTS
LEADERSHIP INSIDE AND OUTSIDE	
4-H OR FFA	15 PTS
ACTIVITIES HELPING OTHERS INSIDE AND OUTSIDE	
4-H OR FFA	15 PTS
<hr/>	
160 POINTS TOTAL	

Each entrant will be asked to provide a list specifying their 2022 Big Fresno Fair class placings. Forms for this list are available in the Livestock Office and will be given to the entrant when their application is completed and turned in.

Placings will be evaluated on a sweepstakes scoring basis, i.e.:

1st place	5 points
2nd place	4 points
3rd place	3 points
4th place	2 points
5th place to final	
Eligible placing	1 point

Champions and Reserve Champions to be listed.

CHAMPION OF EXCELLENCE RULES

1. There will be one winner from each livestock species group exhibiting at The Big Fresno Fair.
2. Any 4-H or FFA member in good standing may apply for this award program. The signature of their 4-H Leader or FFA Advisor proves their good standing in the club or chapter.
3. Each entrant will be granted an interview. The interview panel will consist of a minimum of three individuals selected by the donor. Please see the Judging Scorecard for the basic criteria.
4. Each entrant will be scored in all areas on the scorecard. The interview panel reserves the right to conduct additional interviews or visit as needed for clarifications or ties. All ties will be broken by the panel. The panel may request input from Junior Livestock Auction Committee members, staff, advisors, and leaders.
5. Each entrant should bring a current Record Book to the interview. This will be reviewed by the panel; 4-H and FFA experts may be called upon to assist as needed.
6. 4-H and FFA members exhibiting livestock at the 2022 Big Fresno Fair may submit entry forms. All members are encouraged to apply. Supreme Champion and Reserve Supreme Champion Market Animal exhibitors will be prohibited from participating in this award program.
7. Entry form for all species must be received no later than 4 PM on Monday, October 3, 2022 AND October 10, 2022 in The Big Fresno Fair Livestock Office.
8. Interviews will be conducted in a designated spot at the livestock barn at The Big Fresno Fair. There will be a Sign-Up Sheet in the Livestock Office. Students must sign up for designated date and time for interviews. Students failing to report for interviews will be disqualified. See fair dates and times for interview schedules.
9. All judging, scoring, and related matters are strictly confidential and will not be shared with any person. The panel may, at their discretion, share reasons for choosing a particular Champion, but not in any comparison to another entrant. Entry form must include a brief (500 words or less) description/discussion of the entrant's fair project. The description should start with the beginning of the project (purchase or birth of the animals) and continue up to and including the experiences preparing for the fair.



Fresno Madera Farm Credit

ACTIVITIES WEEK I

PEEWEE SHOWMANSHIP

ENTRY FEE

\$15.00

OPEN TO RESIDENTS OF FRESNO COUNTY
AUGUST 31, 2022 ALL ENTRIES are due.
SHOW DATE & TIME: OCTOBER 6, 2022

5PM	Dairy Calves - FOLLOWING DAIRY SHOW
5:30PM	Dairy Goats

ENTER ONLINE at www.FresnoFair.com

DIVISION 1596

PEEWEE SHOWMANSHIP 3 YRS. - 5 YRS.
(Ages as of 8/1/22)

DIVISION 1597

PEEWEE SHOWMANSHIP 6 YRS. - 9 YRS.
(Ages as of 8/1/22)

Class

1. Dairy Calves

(Only Dairy Calves 3-6 months and under can be used)

2. Dairy Goats/ Pygmy Goats

**DIVISION 1389 PEE WEE RABBITS WILL SHOW AT THE CONCLUSION OF THE BREEDING
RABBIT SHOW**

Class.

1. Rabbits

RULES

1. Exhibitors must provide their own animal.
2. Only Dairy Calves 3 months and under can be used.
3. Photo Release Form must be completed.
4. Anyone entered in this contest must wear closed-toe shoes.
5. No 4-H uniforms allowed.

SMALL ANIMAL ROUND ROBIN

First place Showmanship winners in Rabbits, Poultry, Dogs and Pygmy Goats are eligible to compete in Small Animal Round Robin. All contestants will show same species simultaneously. There will be no dogs present. There will be a written skills and knowledge test given for the dog section. Skills test may be used in place of specific species.

SHOW DATE & TIME TBA

**PREQUALIFICATION IS REQUIRED ONLY
FIRST PLACE SHOWMAN WILL BE
CONSIDERED FOR THIS CLASS.**

DIVISION 1388 SMALL ANIMAL ROUND ROBIN

Class

1. Junior 4-H/Independent Exhibitors
2. Intermediate 4-H/Independent Exhibitors
3. Senior 4-H/Independent Exhibitors
4. Novice FFA/Independent Exhibitors
5. Freshman FFA/Independent Exhibitors
6. Senior FFA/Independent Exhibitors

**All judging, scoring, and related matters
are strictly confidential and will not be
shared with any person.**

BRED BY EXHIBITOR MARKET

<u>PRE-ENTRY</u>	Required
<u>ENTRY FEE</u>	\$5.00

**BUCKLES WILL ONLY BE AWARDED TO
MARKET
SPONSORED BY
REEDLEY AREA AG BOOSTERS**

THESE BUCKLES ARE FOR THE MARKET
DIVISION ONLY. WINNERS FROM
4H/INDEPENDENT AND FFA/INDEPENDENT
WILL COMPETE AGAINST ONE ANOTHER FOR
THESE BUCKLES. ONLY ONE BUCKLE WILL BE
GIVEN PER SPECIES.

4-H/INDEPENDENT, FFA/INDEPENDENT

Awards will be given to the highest placing animal that has been bred by the exhibitor. To qualify as bred by exhibitor, the exhibitor must have owned the dam of the animal at the time the dam was bred. Awards will be given in the market divisions of each species exhibited;

Beef, Dairy, Swine, Sheep, Dairy Goats, Boer Goats.

DIVISION 1606 MARKET ANIMAL BRED BY EXHIBITOR

Class

1. Market Beef
2. Market Swine
3. Market Sheep
4. Boer Market Goats

DIVISION 1606.1 BREEDING ANIMALS BRED BY EXHIBITOR

1. Breeding beef
2. Breeding swine
3. Breeding sheep
4. Breeding meat goat
5. Breeding dairy cattle
6. Breeding dairy goats
7. Breeding pygmy goats

AWARDS TO BE ANNOUNCED

**ACTIVITIES
WEEK II**

CAROLEE BOELE MEMORIAL SHEEP LEAD
--

<u>ENTRY FEE</u>		\$15.00
<u>PRE ENTRY</u>	REQUIRED	
	NOT A COSTUME CLASS	

ENTRIES DUE: Wednesday August 31, 2022 BY Midnight

NO LATE ENTRIES ACCEPTED

Commentaries need to be emailed to livestock@fresnofair.com no later than
Monday October 3, 2022 BY 7 PM

Carolee Boele Memorial Sheep Lead Class

SEE SHEEP DIVISON FOR RULES AND REGULATIONS

NEW SHEEP DECORATOR CONTEST. RULES WILL BE POSTED

BEEF LEAD & New Best Dressed Beef Contest Costume Contest
--

<u>ENTRY FEE</u>		\$15.00
<u>PRE ENTRY</u>		REQUIRED
	NOT A COSTUME CLASS	

ENTRIES DUE: Wednesday August 31, 2022 BY MIDNIGHT

NO LATE ENTRIES ACCEPTED

COMMENTARIES DUE: Commentaries need to be emailed to livestock@fresnofair.com no later than
Monday October 10, 2022 BY 7PM

SEE BEEF DIVISON FOR RULES AND REGULATIONS

BEEF COSTUME CONTEST-RULES TO BE POSTES

PEEWEE SHOWMANSHIP

<u>ENTRY FEE</u>		\$15.00
<u>PRE ENTRY</u>		REQUIRED

OPEN TO RESIDENTS OF FRESNO COUNTY.
EXHIBITORS MUST PROVIDE THEIR OWN ANIMALS

All ENTRIES are due.
Wednesday August 31, 2022

SHOW DATE & TIME
WILL FOLLOW SHEEP AND GOAT SHOWMANSHIP CLASSES

<u>DIVISION 1596</u>	PEEWEE SHOWMANSHIP 3 YRS. - 5 YRS. (Ages as of 8/1/2022)
----------------------	---

<u>DIVISION 1597</u>	PEEWEE SHOWMANSHIP 6 YRS. - 9 YRS. (Ages as of 8/1/2022)
----------------------	---

Class

- 03. Meat Goat
- 04. Sheep

**CAROLEE BOELE SCHOLARSHIP FUND
BARNYARD OLYMPICS**

ENTRY FEE

\$20.00 Per Team
(2 exhibitors per team same ages)

12 Noon Registration
1 PM Barnyard Olympics

Games will be held in the Main Show Arena.

GAMES TO BE ANNOUNCED DAY OF THE EVENT

AWARDS: BUCKLES

First place Sr. Team 14-19 yrs.
First Place Jr. Team 9-13 yrs.

FOR INFORMATION CONTACT: THE BIG FRESNO FAIR LIVESTOCK DEPARTMENT
(559) 570-3443

LARGE ANIMAL ROUND ROBIN

PREQUALIFICATION IS REQUIRED ONLY FIRST PLACE SHOWMAN WILL BE CONSIDERED FOR THIS CLASS.

DIVISION 1604 LARGE ANIMAL ROUND ROBIN

Class

1. Junior 4-H/Independent Exhibitors
2. Intermediate 4-H/Independent Exhibitors
3. Senior 4-H/Independent Exhibitors
4. Novice FFA/Independent Exhibitors
5. Freshman and Sophomore FFA/Independent Exhibitors
6. Junior, Senior and Graduate FFA/Independent Exhibitors

All judging, scoring, and related matters are strictly confidential and will not be shared with any person.

***ALL JUDGES DECISIONS ARE FINAL**

SHOW DATE & TIME TBA

All first place showmanship winners in Beef, Dairy, Sheep, Swine, Dairy Goats and Boer/Meat Goats are eligible to compete in Large Animal Round Robin. All contestants will show the same species simultaneously. If an exhibitor should win more than one species of showmanship, the second place winner from that class which the exhibitor chooses will be eligible to compete.

Species

1. BEEF
2. SHEEP
3. DAIRY CATTLE
4. DAIRY GOATS
5. MEAT GOAT
6. SWINE

**DON LAUB FFA AWARD
GARY FISCHER 4-H AWARD**

**WINNERS OF THE ADVANCED AND SENIOR DIVISION ROUND ROBIN QUALIFY TO REPRESENT
FRESNO COUNTY AT THE CALIFORNIA STATE FAIR.**

SHOWMANSHIP

ENTRY FEE PER ANIMAL

\$ 10.00

Entry must have been shown in feeder, market or breeding class.

CLASS

1. BEEF CATTLE
2. DAIRY CATTLE
3. SHEEP
4. SWINE
5. DAIRY GOAT
6. PYGMY GOAT
7. MEAT GOAT

SHOWMANSHIP

CASH AWARDS OFFERED PER CLASS

4-H, FFA, INDEPENDENT

<u>PLACE</u>	<u>AWARD</u>
1 ST Place	\$25.00
2 nd Place	\$20.00
3 rd Place	\$15.00

CDFA State Rule; Rule 30, Page 12:

Livestock shown in showmanship must be owned by the exhibitor, entered by exhibitor and shown in an appropriate market, breeding, or performance class. If the exhibitor has a market animal that is weight sifted and as a result may not show in an individual market class, the exhibitor may use this animal for showmanship if and only if this animal is the only animal the exhibitor has brought to the Fair.

FFA/INDEPENDENT SHOWMANSHIP

DIVISION 1679

FFA ADVANCED SHOWMANSHIP

This Division is open to all Junior, Senior and Graduate FFA/Independent members.

DIVISION 1680

FFA INTERMEDIATE SHOWMANSHIP

This Division is open to all FFA/Independent Freshman and sophomores.

DIVISION 1681.1

FFA JUNIOR HIGH

This Division is open to 7th and 8th grade students that are enrolled in a supervised Agriculture program and are a member of the FFA. This Division will be allowed to move up to the Intermediate division. There will not be a Round Robin round for this division unless the exhibitor moves into the intermediate and wins the division.

DIVISION 1681

FFA NOVICE SHOWMANSHIP

This Division is open to Novice first time showmen only in each species. A novice showman is one who has never shown an animal in that particular species, including any other organization such as 4-H or Independent at time of entry.

ORDER OF JUDGING

CLASS

ADVANCED-JR, SR, GRAD
INTERMEDIATE-Freshman/Sophomore
FFA Junior
NOVICE-NEVER SHOWN A SPECIFIC SPECIES BEFORE
(JACKPOTS & ROUNDRBIN PARTICIPATION IS COUNTED AS A SHOW)

4-H/INDEPENDENT SHOWMANSHIP

DIVISION 1682

SENIOR SHOWMANSHIP

Must be 14 years old on or before December 31, 2021. Age 14 and up

DIVISION 1683

INTERMEDIATE SHOWMANSHIP

Must be 11 years old on or before December 31, 2021. Age 11-13

DIVISION 1684

JUNIOR SHOWMANSHIP

Must be 9 years old on or before December 31, 2021. (Ages 9-10)

JUNIOR LIVESTOCK MARKET BEEF RULES FFA, 4-H, AND INDEPENDENT

1. It is the intent of the Division of Fairs and Expositions that the quality standards established for market animals be maintained. Therefore, classification will be subject to change in the event there are changes made in federal grading.
2. A Brand Inspection or a Bill of Sale must be made out to the exhibitor, showing a minimum of 120 days ownership, or a signed statement that the animal was calved from the exhibitor's cow and was raised by the exhibitor.
Cattle originating from a different state must have the following: Proof of Ownership consists of: A Brand Inspection Certificate in the exhibitor's name must accompany cattle originating from states requiring brand inspection.
Cattle originating from states not requiring brand inspection must be accompanied by a health certificate or original Bill of Sale in the exhibitor's name. If a Bill of Sale is used it must include the origin and destination, exhibitor's and seller's names, addresses, and phone numbers, and the animal's physical description including any identifying markings. EID Tags must be left in the ear if they are listed on the brand inspection.
(California Food and Ag Code 21702, 21703).
3. All market animals will be judged as follows:
English — must be Angus, Hereford or Shorthorn;
All Other Color — all breeds or crossbreds which are predominantly red, white, or any other non-black color;
Black — for all breeds or crossbreds which are black in color or have any black markings.
4. Market Beef may be a steer or heifer. TWO Market beef per exhibitor may be weighed and shown.
5. A Grand Champion and Reserve Grand Champion will be chosen from FFA/Independent, 4-H/Independent. THESE FOUR (4) ANIMALS MUST SELL IN THE JUNIOR LIVESTOCK AUCTION, AND ARE A TERMINAL SALE ONLY. NO LIVE PICK-UPS.



MARKET BEEF DIVISION
ENTRIES DUE: Tuesday, MAY 31 2022
Entries close at midnight
PICTURES OF STEERS WITH EARTAGS REQUIRED ON ENTRY

ENTRY FEE PER ANIMAL
PRE-ENTRY

\$10.00
REQUIRED

Date of Show:
WEDNESDAY, OCTOBER 12, 2022 @ 8 AM

CHAMPIONS WILL BE SELECTED AT 6:30 PM.*
NEW -ALL CHAMPIONS WILL BE ALLOWED TO REWASH FOR CHAMPION DRIVE IF TIME
PERMITS AND NO WATER RESTRICTIONS ARE IN PLACE

DIVISION 1615

FFA/INDEPENDENT SINGLE MARKET ANIMALS

DIVISION 1616 4-H/INDEPENDENT SINGLE MARKET ANIMALS

ENTER MARKET BEEF BY DIVISION ONLY.
CLASSES WILL BE BROKEN DOWN BY WEIGHT.

Market Weight 1,000 to 1,400 lbs.
 Market Weight 1,401 lbs. and up

NUMBER OF CHUTES ALLOWED PER
HEAD PER CLUB/CHAPTER

5 CHUTES MAXIMUM

1-5	head	1 chute
6-10	head	2 chutes
11-15	head	3 chutes
16-20	head	4 chutes
21+	head	5 chutes

Chute Fee: \$ 15.00 Per Chute

DIVISION 1606 BRED BY EXHIBITOR

ENTRY FEE
PRE-ENTRY

\$5.00
Required

Class
 2. Market Beef

DIVISION 1617 FFA CHAPTER GROUP (MARKET)

DIVISION 1618 4-H CLUB GROUP (MARKET)

CHAPTER/CLUB GROUPS Only one Group per Chapter/Club

PRE-ENTRY

None

Class

1. Three animals that have been shown in Market Divisions, owned by members of one chapter/club. No chapter/club member may enter more than two animals.

FEEDER BEEF

ENTRY FEE PER ANIMAL

\$10.00

DIVISION 1619 - SINGLE FEEDER ANIMALS

ENTRIES DUE:

Tuesday August 31, 2021 BY 4 PM

4-H, FFA AND INDEPENDENTS COMBINED

AWARDS TO BE ANNOUNCED

CHAMPION FEEDER CALF & RESERVE CHAMPION FEEDER CALF
 Due to weight variances, entries should be made by division number only.

CLASSES WILL BE BROKEN DOWN BY WEIGHT

Steer/heifer Weights

400 lbs. - 999 lbs.

REGISTERED PUREBRED BREEDING ANIMALS

ENTRY FEE PER ANIMAL

\$10.00

CASH AWARDS OFFERED PER CLASS

<u>PLACE</u>	<u>AWARD</u>
1 st Place	\$30.00
2 nd Place	\$25.00
3 rd Place	\$15.00

REGISTERED BREEDING CLASSES WITH SINGLE ENTRIES MAY BE COMBINED AT THE DISCRETION OF THE JUDGE.

All females 24 months of age or older at the beginning day of the fair must: (a) have a calf at side; OR (b) show obvious signs of pregnancy; OR (c) have a veterinarian's certificate of pregnancy.

DIVISION 1609 REGISTERED BULLS

Class

- | | |
|--------------------------|-----------------------|
| 1. Junior or Senior Calf | 09/01/2021-05/10/2022 |
| 2. Yearling | 09/01/2020-08/31/2021 |

CHAMPION AND RESERVE CHAMPION REGISTERED BULL

DIVISION 1610 REGISTERED HEIFER

DIVISION 1611 GRADE/UNREGISTERED FEMALES

(Classes may be broken by breed if three of the same breed are entered in one class.)

CLASS

- | | |
|---|-----------------------|
| 1. Junior Calf | 01/01/2022-05/30/2022 |
| 2. Senior Calf | 09/01/2021-12/31/2021 |
| 3. Summer Yearling | 05/01/2021-08/31/2021 |
| 4. Junior. Yearling | 01/01/2021-04/30/2021 |
| 5. Senior. Yearling & 2 yr. old females | 03/01/2020 12/31/2020 |
| 6. Cow Calf Pair before | 03/01/2020 |

Cow calf pairs may be shown. No pens will be provided for nursing cow/ calf pairs. Calves must be halter broken and tied while on the fairgrounds. If calves are under two months old please contact the livestock office in order to accommodate these animals.

CHAMPION AND RESERVE CHAMPION REGISTERED HEIFER

CHAMPION AND RESERVE GRADE FEMALE

Registered and Grade Breeding females will compete for overall Supreme Female award. (Buckle)

DIVISION 1606

BRED BY EXHIBITOR

PRE-ENTRY

Required

ENTRY FEE

\$5.00

Class

1. Breeding Beef

CHAPTER/CLUB GROUPS (ONLY ONE PER CHAPTER/CLUB)

DIVISION 1612 FFA CHAPTER GROUP (BREEDING)

DIVISION 1613 4-H GROUP (BREEDING)

- Class 1 Three animals that have been shown in breeding division, owned by members of the one chapter, or club. No member may enter more than two animals.

Please visit www.fresnofair.com and look in the Forms link to find the fillable contracts. New faster way to complete and upload contracts!

BEEF LEAD

ENTRY FEE
PRE ENTRY

\$15.00
REQUIRED

ENTRIES ARE DUE, Wednesday August 31, 2022 BY MIDNIGHT

COMMENTARIES DUE: Emailed livestock@fresnofair.com no later than,
Monday October 3, 2022 BY 7PM

****NO LATE ENTRIES ACCEPTED****

DIVISION 1602 BEEF LEAD

Class

1. 9-13 yrs. Beef Lead
2. 14-19 yrs. Beef Lead

CLASS SCORECARD

GENERAL APPEARANCE	50%
Coordination of ensemble (use of leather)	
Suitability of style	
Presentation of garment	
Coordination of outfit for Beef	
Eye appeal	
SHOWMANSHIP	30%
Ability to lead	
Handling of Cattle	
Appearance of animal	
PERSONAL PRESENTATION	20%
Poise	
Gracefulness	
TOTAL	100%

RULES

1. Entrant must be an exhibitor in the Junior Department at The Big Fresno Fair and must be the OWNER OF THE ANIMAL used in the Lead Class and shown in a Junior Livestock Department class at THE 2022 BIG FRESNO FAIR.
2. Entries are open to all members of 4-H, FFA, and Independent. Participants must be showing at the fair and registered as one of the above with this fair to be eligible.
3. Entrants must furnish their own outfit, which must be made up of 50% leather. (i.e.: leather vest, leather jacket, boots, skirts and other leather clothing.) The Leather must be cowhide leather. Entries will be judged on mode of dress selected, which must be appropriate, attractive and lend versatility and flare to the class. The exhibitor must furnish a picture of the garment tag that lists the type of leather in the garment. This tag can also be referred to as the care label. It must stay connected to the garment during competition.
4. Beaus and Belles contestants must provide labels of leather used in the outfit provided with a commentary.
5. Outfits must not have been used at prior Fresno Fair Beaus and Belles Classes by the exhibitor or another exhibitor.
6. Outfits do not have to be made by the entrant.
7. Entrants must also provide their commentary sheet of 200 WORDS OR LESS based on the qualifying event. The commentary must be typed (double-spaced) and written in "THIRD PERSON",
8. Beef Cattle must be shown on a halter. Cattle must be entered in a breeding or market class to be eligible. Animals may be shown Blow and Show or Fitted.

****NOT A COSTUME CLASS****

Division 1603 BEEF BEST DRESSED-COSTUME CONTEST

Class

1. 9-13 yrs.
2. 14-19 yrs.

This is a costume contest- All costumes must follow all humane guidelines set forth in the State and local rules. All exhibitors

GENERAL APPEARANCE	50%
Coordination of ensemble (use of leather)	
Suitability of style	
Presentation of garment	
Coordination of outfit for Beef	
Eye appeal	
SHOWMANSHIP	30%
Ability to lead	
Appearance of animal	
Showmanship skills	
PERSONAL PRESENTATION	20%
Presentation and skill in choreography.	
Routine coordination with animal	
TOTAL	100%

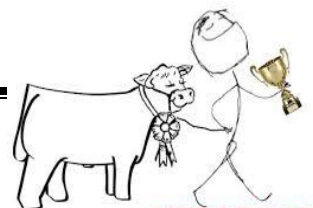
This contest is for the fun loving beef showman with a touch of style and flare. Exhibitors are encouraged to choreograph a routine with their beef animal. All routines should be limited to 2 minutes. With a total ring time of 5 minutes for each exhibitor. This will give the exhibitor the time to show off their skills. Exhibitors will also be judged on showmanship skills. Exhibitors will be judged against a rubric system. And all scores will be kept confidential.

Rules

1. Music must be appropriate for young listeners and general audience
2. Movements should not be inappropriate for youth viewers
3. Costume must be tasteful and appropriate for barn dress code.
4. Exhibitors must turn in a photo of the care label that shows the leather percentage on it. All leather must be Cowhide. Pleather is not an option.
5. All cattle entered must have shown at The Big Fresno Fair.

CASH AWARDS OFFERED PER CLASS **The Stylish Cowhand and Best Dressed Beef** **FIRST PLACE WILL RECEIVE A BELT BUCKLE**

<u>PLACE</u>	<u>AWARD</u>
1 ST Place	\$25.00
2 nd Place	\$20.00
3 rd Place	\$15.00



<p align="center">DAIRY CATTLE RULES FFA/INDEPENDENT, 4-H/INDEPENDENT</p>
--

1. All animals entered in this division must be capable of being led by the exhibitor or it will be released by the livestock superintendent upon arrival to ensure the safety of the public and exhibitors.
2. NO NURSE COWS WILL BE PERMITTED ON FAIRGROUNDS. ALL CALVES MUST BE WEANED.
If a nursing calf is shown, it must be nursing its own dam and the dam must be shown in her own age class.
3. All cattle transported from out of the State of California must be accompanied by a Health Certificate, a Brand Inspection and Bill of Sale.
4. All bulls are to be double tied. ALL BULLS 1 YEAR AND OLDER WILL BE SHOWN WITH NOSE LEADS.
5. DAIRY BLOCKING CHUTE RULES
All chutes must be in stalls (2 stalls per chute).
NO BLOCKING CHUTES WILL BE ALLOWED IN THE AISLES. Failure to comply will result in loss of cash awards and removal of chute from grounds.
6. DAIRY MILK BARN USAGE
Please arrange your milking time with the MILKER upon arrival on the grounds. If you arrive late for your assigned time, you will milk last. No cattle will be taken into the barn by fair staff. The exhibitor must be at the barn to milk DURING A MILKING HOURS.
(Please let the milk parlor attendant know if you will need to be milked later than final milking of the dairy cows in the exhibit. All waste will be cleaned up by the exhibitors. Do not leave feces in the milk barn if you milk your own cows?) No exhibitors should be in the milk parlor without an attendant. This is for the safety of our exhibitors/parents. The Big Fresno Fair is not responsible for any injury to exhibitor/parent/leader/project that may occur in our milking parlor.
7. The Livestock Department has the option to combine classes with less than 5 entries.
Awards will be offered per division

<p>CHUTE FEE \$15.00 <u>NUMBER OF CHUTES ALLOWED</u> <u>PER HEAD PER CLUB/CHAPTER</u> <u>5 CHUTES MAXIMUM</u></p>
--

<p>1-5 head 1 chute 6-10 head 2 chutes 11-15 head 3 chutes 16-20 head 4 chutes 21+ head 5 chutes</p>

REGISTERED PUREBRED DAIRY BREEDING CATTLE
--

ENTRY FEE PER ANIMAL:
Ribbons only

\$10.00

4-H, FFA, INDEPENDENTS COMBINED

Registered and Grade Breeding Heifer Show will follow the Showmanship classes. The Milk Cow (Registered & Grade)

Show will be at 12 PM, October 6, 2022.

Dairy Prospect/Replacement Heifer Show on
Thursday, October 6, 2022 @ 2 PM

4-H, FFA, AND INDEPENDENTS COMBINED

CASH AWARDS OFFERED PER CLASS

<u>PLACE</u>	<u>AWARD</u>
1 ST Place	\$35.00
2 nd Place	\$30.00
3 rd Place	\$25.00

ONLY BREEDS IN RECOGNIZED BREED ASSOCIATIONS ARE ELIGIBLE. BIRTHDATE AND CLASS SAME FOR ALL BREEDS.

DIVISION 1621

HOLSTEIN-FRIESIAN

DIVISION 1622

ALL OTHER RECOGNIZED BREEDS

BULLS

Classes

Date of Birth

1. Junior or Senior Calf

09/01/2021 - 05/10/2022

Champion Bull

Reserve Champion Bull

Supreme and Reserve Supreme Champion Bulls

Classes

Date of Birth

2. Junior Calf

03/01/2022 - 05/10/2022

3. Winter Calf

12/01/2021 - 02/28/2022

4. Senior Calf

09/01/2021 - 11/30/2021

5. Summer Yearling

05/01/2021 - 08/31/2021

6. Junior Yearling

01/01/2021 - 04/31/2021

7. Senior Yearling

09/01/2020 - 02/29/2021

FEMALES

Jr. Champion Female

Reserve Jr. Champion Female

DIVISION 1622 MILK COW CLASSES

8. Two Years & under 3 09/01/2019 - 08/31/2020

9. Three Years & under 4 09/01/2018 - 08/31/2019

10. Four Years & under 5 09/01/2017 - 08/31/2018

11. Aged Cow Prior to Sept 1, 2017

The Milk Cow (Registered & Grade) Show will follow the Showmanship classes on or about 12:00 PM on Thursday, October 6, 2022.

Sr. Champion Female

Reserve Sr. Champion Female

Grand Champion Female

Reserve Grand Champion Female

DIVISION 1624 FFA CHAPTER GROUP
DIVISION 1625 4-H CLUB GROUP

All animals must be owned by one exhibitor and have been shown in their age appropriate class.

CLASS

12. **YOUNG HERD:** One bull and two females, all senior yearlings or younger.
13. **GET OF SIRE:** Three animals get of one sire. Not more than two can be bulls. Each exhibitor is limited to one entry sired by the same bull. Sire registration number must be on entry form.
14. **PRODUCE OF DAM:** To consist of two animals, any age, either sex, the produce of one cow. The dam must be identified by registration number.
15. **BEST OF 3 FEMALES**

GRADE OR UNREGISTERED DAIRY CATTLE

ENTRY FEE PER ANIMAL:

\$ 10.00

**Registered and Grade Breeding Heifer Show will follow the
Showmanship classes. The Milk Cow (Registered & Grade) Show will be at 12 PM,
October 6, 2022.**

**Dairy Prospect/Replacement Heifer Show on
Thursday, October 6, 2022 @ 2 PM**

4-H, FFA, AND INDEPENDENTS COMBINED

CASH AWARDS OFFERED PER CLASS

<u>PLACE</u>	<u>AWARD</u>
1 ST Place	\$30.00
2 nd Place	\$25.00
3 rd Place	\$20.00

RULES

1. Senior and Junior yearlings in milk must be shown with two year olds.
2. By the signature as owner on an entry form, the exhibitor also certifies that the sire of each animal entered in the following divisions for grade animals was registered.
3. A permanent ear tag or tattoo number is required.
4. Animals which have been registered by a purebred association cannot be entered in this Division.

<u>Classes</u>	<u>Date of Birth</u>
2. Junior Calf	03/01/2022 - 05/10/2022
3. Winter Calf	12/01/2021 - 02/28/2022
4. Senior Calf	09/01/2021 - 11/30/2021
5. Summer Yearling	05/01/2021 - 08/31/2021
6. Junior Yearling	01/01/2021 - 04/31/2021
7. Senior Yearling	09/01/2020 - 02/29/2021

FEMALES

**Jr. Champion Female
Reserve Jr. Champion Female**

DIVISION 1622 MILK COW CLASSES

- | | |
|--------------------------|-------------------------|
| 8. Two Years & under 3 | 09/01/2019 - 08/31/2020 |
| 9. Three Years & under 4 | 09/01/2018 - 08/31/2019 |
| 10. Four Years & under 5 | 09/01/2017 - 08/31/2018 |
| 11. Aged Cow | Prior to Sept 1, 2017 |

DIVISION 1606 BRED BY EXHIBITOR

PRE-ENTRY

Required

ENTRY FEE

None

Class

3. Dairy - Registered and Grade

CHAPTER/CLUB GROUPS

ENTRY FEE

None

DIVISION 1624

FFA CHAPTER GROUP (DAIRY)

DIVISION 1625

4-H CLUB GROUP (DAIRY)

Class 1

(Five animals that have been shown in either Grade or Registered divisions, owned by members of one chapter or club. No chapter or club member may have more than two animals.)

Supreme and Reserve Supreme Champion Female

<p align="center">2022 JUNIOR DAIRY PROSPECT/ REPLACEMENT HEIFER AUCTION RULES</p>

SATURDAY, OCTOBER 08, 2022

AUCTION BEGINS at 6:30 PM

These dates are subject to change with Covid-19 Restrictions!!

1. Any valid Fresno County resident or member of a Fresno County 4-H Club, FFA Chapter or Independent exhibitor participating in the Dairy Replacement Heifer Project may be eligible to sell their animal, provided all rules of sale participation are met.
2. Exhibitors may enter **MULTIPLE Prospect and Replacement Heifers. However, THEY may only exhibit (2) two Dairy Prospect Heifers AND (2) two Dairy Replacement Heifers. ONLY ONE ANIMAL MAY BE SOLD.**
3. Ownership for Dairy Prospect and Replacement Heifers is a minimum of 4 months. For the purpose of the 2022 Big Fresno Fair, this date is **May 31, 2022. Your Bill of Sale or Brand Inspection must reflect this date or earlier. These dates are reflecting changes due to the COVID-19.**
4. **Entries/Contracts/pictures/bill of sale for Dairy Prospect and Replacement Heifers are due June 3, 2022.**
5. **The inspection to be announced**
6. **All heifers must be halter broke and must be capable of being removed from the trailer for inspection. Do not bring a heifer if she is not capable of being controlled outside the trailer. Heifers brought to inspection that have not been trained to lead sufficiently will not be inspected.**
7. The sire of the heifer must have been a registered bull and be of the same breed as the dam.

8. Heifers must be bred to a **registered bull** of the same breed either by natural service or artificial insemination. AI BRED or NATURAL BRED HEIFERS MUST HAVE A SERVICE SIRE CODE.
9. Heifers may be registered or grade.
10. Heifers sold as registered must have registration papers (IN THE EXHIBITORS NAME) with signed transfer on file at the Livestock Office **no later than October 1, 2022**. These papers will be given to the buyer upon payment. Transfer will be the buyer's responsibility. These heifers require milk production records on their dam.
11. Replacement Heifers must have been born between August 1, 2020, and December 31, 2020, for the 2022 Replacement Heifer Show and Auction.
Prospect Dairy Replacement Heifers must have been born between September 1, 2021, and December 31, 2021 for the 2022 Prospect Dairy Replacement Heifer Show and Auction.
12. Replacement Heifers must freshen within 75 days of the sale. A heifer may calve up to 2 weeks prior to the opening day of the fair. For the 2022 fair, the earliest possible calving date is September 21, 2022. If calving does take place prior to the fair, the heifer must be inspected at the time of calving by a member of the Replacement Heifer Committee within 6 to 12 hours after calving. The heifer must be moved to a dairy for proper handling until the opening day of the fair. The fetus must be at least 8 ½ months old. Any fetus younger than this will be considered an abortion. All calves born to Dairy Replacement Heifers must be delivered to buyers within one day of the Auction. Calves may be moved to an authorized calf handlers until heifer is sold. All calves must be photographed at the time of inspection by committee members.

Replacement Heifer Calves born at the fair will be allowed to be taken to a reputable dairymen's facility for proper care upon the discretion of the Livestock Superintendent and Replacement Heifer Committee. A BFF RFID TAG WILL BE PLACED IN THE HEIFER & CALVES EAR BY COMMITTEE MEMBER AT THE TIME OF INSPECTION, IN ORDER TO ENSURE GENETIC MATCH TO HEIFER.
13. Heifers must be completely dehorned, deteated, tattooed and vaccinated for Brucellosis. All tattoos must be legible at inspection. If a tattoo is not present a USDA - RFID tag must be in the ear at inspection along with the clip. Scurs will be evaluated at inspection. It will be the determination of the veterinarian rather the scurs should be removed or will be allowed. **The veterinarian will make the final decision.**
14. All Heifers will be examined for soundness, including a pregnancy check by the Fresno Fair veterinarian. Causes for sifting include, but are not limited to, blind quarters and extra teats. Those not meeting the requirements of the auction will be eliminated from the Dairy Prospect/Replacement Heifer class and will be transferred to an appropriate Heifer class for the purpose of judging.
15. **NO REPLACEMENTS WILL BE ALLOWED AFTER 60 DAYS PRIOR TO THE OPENING DAY OF THE BIG FRESNO FAIR.** Heifers sifted at the Fair Inspection will automatically go to the Heifer class out of the Replacement Heifer class. For the 2022 fair, this date will be August 5, 2022.
16. If the Heifer cannot be bred, or any other similar problems arise, a Replacement Heifer may be purchased with the approval of the Dairy Replacement Heifer Committee.
17. Only blue and red ribbon Heifers will be allowed to sell in the Prospect/Replacement Heifer Auction.
18. Prospect Dairy Replacement Heifers may be eligible but not required to sell.
19. Heifers will be given a neck chain and number.

20. HEIFERS WILL BE PAINT BRANDED BEFORE THE SALE.

21. The Big Fresno Fair Heifer Auction will not be held liable for the following conditions after the gavel hits and the auctioneer declares the heifer sold: mastitis, calf mortality, heifer mortality, lameness, inability to produce milk, or illness. All heifers entered in the sale have been examined twice during the contract period. All Buyers buy at their own risk. The fair will not change price or reimburse buyers for heifers that are unable to produce milk.

ALL DECISIONS OF THE HEIFER INSPECTION COMMITTEE ARE FINAL!

PROSPECT/REPLACEMENT HEIFERS

ENTRIES DUE: June 3, 2022

ENTRY FEE PER ANIMAL

\$10.00

Prospect and Replacement Heifer class size will be limited to 17 head per class or broken evenly by the Committee. NO substitutions will be allowed.

PLEASE NOTE:

***** **All 4-H, FFA, and Independent Dairy Replacement Heifers will show together.**

DANISH SYSTEM OF JUDGING WILL BE USED IN REPLACEMENT HEIFER SELECTION

<u>PLACE</u>		<u>SALE ELIGIBILITY</u>
PURPLE/BLUE	Market Ready	Sale
RED/WHITE	Not Market Ready	No Sale

DIVISION 1626 DAIRY PROSPECT REPLACEMENT

Prospect Heifer ages must be between: 08/01/2021-12/31/2021

All prospect heifers will be shown together

CHAMPION DAIRY PROSPECT REPLACEMENT HEIFER
RESERVE CHAMPION PROSPECT REPLACEMENT HEIFER

ALL HEIFERS WILL BE SHOWN TOGETHER.
HERE WILL BE ONE CHAMPION AND ONE RESERVE CHAMPION.
HEIFERS WILL SELL ACCORDING TO CLASS PLACING

DIVISION 1627 4-H/ IND. DAIRY REPLACEMENT HEIFERS

DIVISION 1627.1 FFA/IND. DAIRY REPLACEMENT HEIFERS

Heifer - Ages must be between 08/01/2020 - 12/31/2020

Classes

1. Holstein
2. Jersey

CHAMPION REPLACEMENT HEIFER
FFA/4-H/INDEPENDENT
RESERVE CHAMPION REPLACEMENT HEIFER
FFA/4-H/INDEPENDENT

Please visit www.fresnofair.com and look in the Forms link to find the fillable contracts. New faster way to complete and upload contracts.

DAIRY GOATS FFA, 4-H, INDEPENDENTS COMBINED
--

REGISTERED DAIRY GOATS
ENTRY FEE PER CLASS
 PRE-ENTRY

\$10.00
REQUIRED

CASH AWARDS OFFERED PER CLASS

<u>PLACE</u>	<u>AWARD</u>
Best Doe in Show	Buckle
Best Udder	Bucket
1 ST Place	\$20.00
2 nd Place	\$15.00
3 rd Place	\$10.00

DIVISION 1650

JR. DIVISION REGISTERED LA MANCHA

DIVISION 1650.1

JR. DIVISION REGISTERED ALPINE

DIVISION 1651

**JR. DIVISION REGISTERED ALL OTHER RECOGNIZED BREEDS -
 SPECIFY BREED**

DIVISION 1652

JR. DIVISION RECORDED GRADES

ENTRIES DUE: WEDNESDAY, AUGUST 31, 2022

Date of show: WEDNESDAY, October 5, 2022 FOLLOWING JUNIOR DAIRY GOAT SHOWMANSHIP

ADGA RULES SHALL GOVERN

RULES

1. Animals with a "Certificate of Registry" (BLUE BORDER) issued by the American Dairy Goat Association are eligible for Divisions 1650 -1651.
 Recorded Grades must have "Certificate of Pedigree" (BROWN BORDER) issued by ADGA, for Division 1652.
2. The order of the show is subject to change. The show order may change due to issues of milking goats out.

JR. REGISTERED DAIRY DOES/RECORDED GRADE

CLASS

Date of Birth

- | | |
|------------------------|-------------------------|
| 1. Milking Yearling | Born in 2021 |
| 2. 2 years and under | Born in 2020 |
| 3. 3 years and 4 years | Born in 2018 or 2019 |
| 4. 5 years and older | Born in 2017 or Earlier |

Best Udder
Senior Champion Doe
Reserve Senior Champion Doe

- | | |
|---------------------|-------------------------------|
| 5. Junior Kid | Born May or August 2022 |
| 6. Intermediate Kid | Born March or April 2022 |
| 7. Senior Kid | Born January or February 2022 |
| 8. Dry Yearling | Born in 2021 |

Junior Champion Doe
Reserve Junior Champion Doe

BREEDING GROUP CLASSES

**ALL ANIMALS MUST BE OWNED AND EXHIBITED
BY ONE EXHIBITOR AND ENTERED AS INDIVIDUALS**

WILL SHOW AT THE END OF THE 4-H DIVISION OR FFA DIVISIONS

9. Get of Sire: Three does sired by same buck, at least one to be a yearling or older in milk.
One entry by same buck per exhibitor.
10. Produce of Dam: Three does produce of same doe.
One entry by same dam per exhibitor.
11. Best Three Females: Three does of any age need not be related but of same breed. One entry per exhibitor.
12. Dam/Daughter: One doe and one of her daughters, any age. Daughters must be bred by exhibitor. One entry per exhibitor per dam.

DIVISION 1606 BRED BY EXHIBITOR

PRE-ENTRY

REQUIRED

ENTRY FEE

None

Class

7. Dairy Goats
8. Replacement Does

CHAPTER/CLUB GROUPS

Only one Group per Chapter/Club

ENTRY FEE

None

DIVISION 1653

CHAPTER/CLUB GROUP

Class

1. FFA: Five does of any age. Must be owned by at least three exhibitors. Must have been shown in breeding classes.
2. 4-H: Five does of any age. Must be owned by at least three exhibitors. Must have been shown in breeding classes.

FITTING STANDS/MILK STANDS \$15.00

NUMBER OF STANDS ALLOWED PER HEAD PER CLUB/CHAPTER

5 STANDS MAXIMUM

1-5	head 1 stand
6-10	head 2 stands
11-15	head 3 stands
16-20	head 4 stands
21 +	head 5 stands

Please visit www.fresnofair.com and look in the **Forms link** to find the fillable contracts. New faster way to complete and upload contracts

**ALL SPECIES MUST STAY WITH IN
THE BARN. NO ANIMALS MAY BE
WALKED OUTSIDE OF THE BARN AREA.**

JUNIOR DAIRY DOE REPLACEMENT AUCTION RULES

1. Ownership for dairy replacement doe is a minimum of 90 days. For the purpose of the 2022 Big Fresno Fair, this date is July 5, 2022. **Your Bill of Sale must reflect this date or earlier.**
2. **Saturday, July 9, 2022, 8 AM – 10 AM,** at The Big Fresno Fair Carolee Boele Livestock Pavilion, Replacement Doe Inspection for Junior and Senior Does and CAE tests for age appropriate does only. **APPOINTMENT MUST BE MADE BY JULY 6, 2022.**

All Dairy Replacement Doe photos, COPY OF REGISTRATION PAPERS, contracts and entries are due ON LINE WITH ENTRIES. NO PAPERS WILL BE ACCEPTED AT INSPECTION.

3. Does must be registered or recorded grade, with papers from ADGA.
4. Does sold must have registration papers with signed transfer in the Livestock Office by October 5, 2022. These papers will be given to the buyer along with a Bill of Sale after payment has been made. Transfer will be the buyer's responsibility.
5. Does must have been born between December 1, 2021, and March 31, 2022, for the 2022 Dairy Goat Doe Replacement sale. Senior Does; 12/1/2021 - 6/30/2021. Junior Does; 7/1/2021 - 3/31/2022.

DOES MUST NEVER HAVE PREVIOUSLY FRESHENED.

6. **The exhibitor must expose the senior does to a buck prior to the fair. (Junior Does need not be exposed.)** Does will be examined by the Fresno Fair veterinarian to determine if there is a pregnancy prior to the sale. The buck must be registered with ADGA and the seller must provide a signed service memo or lease contract page.
7. Does must be completely dehorned and tattooed.
8. If any doe tests positive for CAE, you can re-test immediately under the supervision of the Fresno Fair veterinarian. Does will be replaced if a positive test result is consistent.
9. A doe may be replaced prior to fair entry, upon the discretion of the Replacement Doe Committee. Additional documentation may be required as evidence for the replacement. Last day for replacement is August 1, 2022
10. Milk records are optional but highly recommended.

DAIRY REPLACEMENT DOES

ENTRY FEE PER ANIMAL
PRE-ENTRY

\$10.00
Required w/CONTRACT

DIVISION 1659 FFA/INDEPENDENT SINGLE DAIRY REPLACEMENT DOE
DIVISION 1660 4-H/INDEPENDENT SINGLE DAIRY REPLACEMENT DOE

REPLACEMENT DOE

Class

- | | |
|----------------|--------------|
| 1. Senior Does | Born in 2021 |
| 2. Junior Does | Born in 2022 |

CHAMPION
RESERVE CHAMPION
SUPREME & RESERVE CHAMPION

BOER BREEDING GOATS

ENTRY FEE PER ANIMAL
PRE-ENTRY

\$10.00
Required

MATURE DOES MAY BE SHOWN ON HALTERS BUT NO PRONGED COLLARS WILL BE ALLOWED
HALTERS MAY BE BLACK, BROWN NYLON OR LEATHER.
NO ROPE HALTERS

CASH AWARDS OFFERED PER CLASS

<u>PLACE</u>	<u>AWARD</u>
1 ST Place	\$25.00
2 nd Place	\$20.00
3 rd Place	\$15.00

DIVISION 1667
DIVISION 1668

REGISTERED BOER GOATS - DOES ONLY
GRADE AND PERCENTAGE BOER GOATS ALL DOES SHOW TOGETHER -
DOES ONLY

Class

- | | |
|------------------|-------------------------|
| 1. Mature Does | Born BEFORE Jan. 1 2021 |
| 2. Yearling Does | Born DURING 2021 |
| 3. Kids | Born AFTER Jan. 1 2022 |

CHAMPION AND RESERVE CHAMPION BOER DOE

DIVISION 1606
PRE-ENTRY
ENTRY FEE

BRED BY EXHIBITOR
Required
None

Class

9. Breeding Boer Goats

BOER GOAT RULES FFA/INDEPENDENT, 4-H/INDEPENDENT

MARKET GOAT KIDS MUST BE DEHORNED; SCURS MAY BE ALLOWED NO LONGER THAN 2 INCHES.
Market does cannot show udder development.

IDENTIFICATION

Ear notches are not considered a goat I.D. method. GOATS MUST HAVE SCRAPIE IDENTIFICATION IN THE THEIR EAR AT ALL TIMES WHEN ON THE FAIRGROUNDS. GOATS WILL NOT BE ALLOWED IN THE SHOW RING WITHOUT PROPER SCRAPIE IDENTIFICATION. REGISTRATION NUMBERS MAY NOT BE USED AS FLOCK NUMBERS. Flock numbers and breeder's initial name or association prefix shall be on regular and practical tags attached to the ear or tattooed in the ear for yearlings and goats bred by the exhibitor.

GOATS MUST HAVE KID TEETH IF SHOWN IN MARKET CLASSES. TEETH WILL BE CHECKED AT
WEIGH IN

MARKET GOATS

ENTRY FEE PER ANIMAL
PRE-ENTRY

\$10.00
Required

LIMIT: 2 HEAD MAY BE ENTERED PER EXHIBITOR

NEW - DAIRY MARKET GOATS WILL SHOW WEEK ONE AND SELL WEEK TWO

Please call the livestock office with any questions.

BOER MARKET GOATS WILL SHOW AND SELL DURING WEEK TWO.

*NO PRONGED COLLARS WILL BE ALLOWED IN MARKET CLASSES/ Halters will be allowed only if
they are BLACK, BROWN NYLON, OR leather show halters.*

NO ROPE HALTERS

DANISH SYSTEM OF JUDGING

<u>PLACE</u>		<u>SALE ELIGIBILITY</u>
PURPLE/BLUE	Market Ready	Sale
RED/WHITE	Not Market Ready	No Sale

DIVISION 1654 FFA/INDEPENDENT DAIRY MKT. GOAT
DIVISION 1655 4-H/INDEPENDENT DAIRY MKT. GOAT

DIVISION 1669 FFA/INDEPENDENT MARKET GOAT
DIVISION 1670 4-H/INDEPENDENT MARKET GOAT

WEIGHT REQUIREMENTS:

Wether or doe kids	60 to 105 lbs.
(Super-Heavy weight)	106 lbs. and above.

Resale champions will only pay to 105 pounds

**FFA/INDEPENDENT GRAND CHAMPION
FFA/INDEPENDENT RESERVE GRAND CHAMPION
4-H/INDEPENDENT GRAND CHAMPION
4-H/INDEPENDENT RESERVE GRAND CHAMPION**

**DAIRY MARKET GOAT CHAMPIONS WILL BE SELECTED AT 6:30 PM ON DAIRY SHOW DAY IN
THE FIRST SHOW ARENA**

**BOER MARKET GOAT CHAMPIONS WILL BE SELECTED AT 6:30 PM ON MARKET SHOW DAY
IN THE MIDDLE SHOW ARENA**

4-H/FFA GROUP classes will show at the end of their perspective divisions

DIVISION 1606
PRE-ENTRY
ENTRY FEE

BRED BY EXHIBITOR
Required
None

Class

- 11. Dairy Market Goat FFA
- 11.1 Dairy Market Goat 4-H
- 12 Boer Market Goat FFA
- 12.1 Boer Market Goat 4-H

DIVISION 1671 PEN OF TWO

Class

1. Pen of two Market Goats owned by one exhibitor shown in a Market Class.

DIVISION 1672.1 FFA CHAPTER GROUP MARKET GOATS

DIVISION 1673 4-H CLUB GROUP MARKET GOATS

Class

1. Three animals that have been shown in a market division. No more than two to be owned by one exhibitor.

CHAPTER/CLUB GROUPS Only one Group per Chapter/Club

ENTRY FEE None

BOER FEEDER GOATS

4-H, FFA AND INDEPENDENTS COMBINED

ENTRY FEE PER ANIMAL

\$10.00

PRE-ENTRY

Required

Date of Show

WEDNESDAY, October 12, 2022

Feeders will show after Market classes

DIVISION 1674

FEEDER GOATS

FEEDERS CHAMPION AND RESERVE

Feeder Goats 59 lbs. and below.

FITTING STANDS \$15.00

NUMBER OF STANDS ALLOWED

PER HEAD PER CLUB/CHAPTER

5 STANDS MAXIMUM

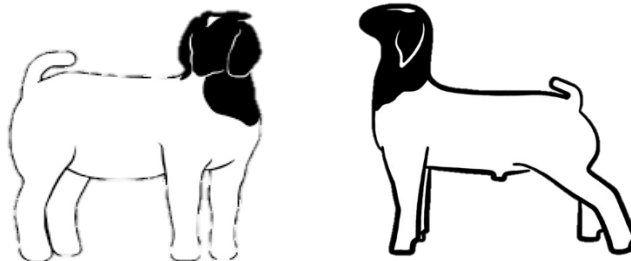
1-5 head 1 stand

6-10 head 2 stands

11-15 head 3 stands

16-20 head 4 stands

21+ head 5 stands



BREEDING PYGMY GOATS

**ENTRY FEE PER ANIMAL
PRE-ENTRY**

**\$ 10.00
REQUIRED**

**Date of show:
THURSDAY, October 6, 2022 GOAT SHOWMANSHIP**

4-H, FFA AND INDEPENDENTS COMBINED

DIVISION 1675

NPGA SANCTIONED PYGMY GOATS WETHERS

Class

- | | |
|-----------|----------------|
| 1. Junior | under one year |
| 2. Senior | over one year |

CHAMPION AND RESERVE CHAMPION

JUNIOR DOES (ages as of opening of the Fair)

Class

- | | |
|-----------------------------------|----------------|
| 3. Junior Kids | 0 - 3 months |
| 4. Intermediate Kids | 4 - 7 months |
| 5. Senior Kids | 8 - 11 months |
| 6. Junior Yearling | 12 - 17 months |
| 7. Senior Yearling (NEVER KIDDED) | 18 - 23 months |

JUNIOR CHAMPION AND RESERVE JUNIOR CHAMPION DOE

SENIOR DOES

Class

- | | |
|------------------------------------|----------------|
| 8. Freshened Yearling (HAS KIDDED) | 12 - 23 months |
| 9. Two years old | As of Show |
| 10. Three years old | As of Show |
| 11. Four years and older | As of Show |

SENIOR CHAMPION AND RESERVE SENIOR CHAMPION

GRAND CHAMPION AND RESERVE GRAND CHAMPION

CASH AWARDS OFFERED PER CLASS

1ST Place	\$25.00
2nd Place	\$20.00
3rd Place	\$15.00

GROUPS

ALL ANIMALS MUST BE OWNED AND EXHIBITED BY ONE EXHIBITOR AND ENTERED AS INDIVIDUALS
--

12. Junior Get of Sire: Three does, get of one sire. Does to come from the Junior Doe classes.
13. Get of Sire: Three does sired by same buck, at least one to have kidded. One entry by same buck per exhibitor.
14. Best Three Does: Best three does owned and exhibited by one exhibitor.
15. Best pair: Two does owned and exhibited by exhibitor. By Registered Sire.

ENTRY FEE PER ANIMAL
PRE-ENTRY

\$10.00
Required

DIVISION 1676 **GRADE PYGMY GOATS WETHERS**

Class

- | | |
|-----------|----------------|
| 1. Junior | under one year |
| 2. Senior | over one year |

**CHAMPION AND RESERVE CHAMPION
DOES**

JUNIOR DOES (ages as of opening of the Fair)

Class

- | | |
|----------------------|----------------|
| 3. Junior Kids | 0 - 3 months |
| 4. Intermediate Kids | 4 - 7 months |
| 5. Senior Kids | 8 - 11 months |
| 6. Junior Yearling | 12 - 17 months |
| 7. Senior Yearling | 18 - 23 months |
- (NEVER KIDDED)

JUNIOR CHAMPION AND RESERVE JUNIOR CHAMPION DOE

SENIOR DOES

Class

- | | |
|------------------------------------|----------------|
| 8. Freshened Yearling (HAS KIDDED) | 12 - 23 months |
| 9. Two years old | As of Show |
| 10. Three years old | As of Show |
| 11. Four years and older | As of Show |

SENIOR CHAMPION AND RESERVE SENIOR CHAMPION

GRAND CHAMPION AND RESERVE GRAND CHAMPION

SPECIAL CLASS

PRE-ENTRY

Required

ENTRY FEE

None

DIVISION 1606 **BRED BY EXHIBITOR**

Class

13. Pygmy Goats FFA
13.1 Pygmy Goats 4-H

<p>CHAPTER/CLUB GROUPS Only one Group per Chapter/Club</p>
--

PRE ENTRY

None

DIVISION 1677

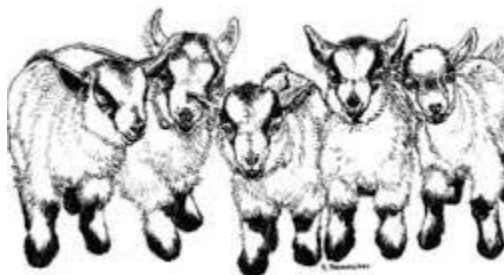
FFA CHAPTER GROUP

DIVISION 1678

4-H CLUB GROUP

Class

1. Three does of any age, need not be related.
Must be owned by at least two exhibitors.



**FFA/INDEPENDENT, 4-H/INDEPENDENT
MARKET SWINE
PICTURES WITH EARTAGS & NOTCHES REQUIRED**

REQUIREMENTS

**ALL HOGS MUST HAVE EAR NOTCHES TO BE ELIGIBLE TO SHOW!!
(Pictures of ear notches MUST accompany entry)**

**THE HARVEST PLANT HAS ASKED THAT ALL MARKET HOGS HAVE ½ INCH OF HAIR
GROWTH OR MORE OVER THE ENTIRE BODY. HOGS SHOULD NOT BE SLICK SHEARED,
HEAD IS INCLUDED.**

**ADVISORS, LEADERS, PARENT ADVISORS MUST SUBMIT A LIST OF SWINE EXHIBITORS IN
ORDER TO RECEIVE EAR TAGS.**

WEIGHT LIMIT: Market Hogs

210 to 280 pounds

281 and up Disqualified

**However hogs weighing 281 to 300 pounds will be allowed to show in a SUPER HEAVY
WEIGHT Division following showmanship, but will not be eligible to show in a market
class.**

**LIMIT: 2 HEAD MARKET SWINE PER EXHIBITOR
TO WEIGH IN**

ENTRY FEE PER ANIMAL

\$10.00

PRE-ENTRY

Required

LIMIT: 2 HEAD MARKET SWINE PER EXHIBITOR

**SUPREME/RESERVE MARKET CHAMPIONS
WILL BE SELECTED AT 6:30 PM ON MARKET SHOW DAY
IN THE MIDDLE SHOW ARENA**

**A Grand Champion and Reserve Grand Champion will be chosen from FFA/Independents and
4-H/Independents.**

THESE FOUR ANIMALS MUST SELL IN THE JUNIOR LIVESTOCK AUCTION

DIVISION 1628

FFA/INDEPENDENT SINGLE MARKET SWINE

DIVISION 1629

4-H/INDEPENDENT SINGLE MARKET SWINE

CLASSES WILL BE BROKEN DOWN BY BREED & WEIGHT AFTER OFFICIAL WEIGH-IN

BRED BY EXHIBITOR

DIVISION 1606

ENTRY FEE PER ANIMAL

\$10.00

Class

4. Market Swine

4.1 Breeding Swine

CHAPTER/CLUB GROUPS Only one Group per Chapter/Club

DIVISION 1631

FFA CHAPTER GROUP MARKET

DIVISION 1632

4-H CLUB GROUP MARKET

(Five animals that have been shown in Market Division, owned by members of one chapter/club. No chapter or club member may enter more than two animals. May be either barrows or gilts of any breed.)

1. It is the intent of the Division of Fairs and Expositions that the quality standards established for market animals be maintained. Therefore classifications will be subject to change in the event there are changes made in federal grading. All market animals will be judged by breeds in each class and shown as follows: Duroc, Hampshire, Yorkshire, Light Crossbred and Dark Crossbred, All Other Breeds and Crossbred.
2. After weighing, market hogs will be divided into weight classes for convenience of judging.
3. Point of origin must be included on entry. Due to weight variances, entries should be made by division number only. Animals weighing in excess of 280 LBS. will be disqualified and exhibitor will be ineligible to compete in any market class with that specific animal.
4. A Grand Champion and Reserve Grand Champion will be chosen from FFA/Independents and 4-H/Independents.

**THESE FOUR ANIMALS MUST SELL IN
THE JUNIOR LIVESTOCK AUCTION**

DANISH SYSTEM OF JUDGING

<u>PLACE</u>		<u>SALE ELIGIBILITY</u>
PURPLE/BLUE	Market Ready	Sale
RED/WHITE	Not Market Ready	No Sale

SINGLE FEEDER & SUPER HEAVY WT. SWINE

ENTRY FEE

\$10.00

PRE ENTRY

REQUIRED

Feeder & Super Heavy weight swine will only be allowed on the grounds if they have proper ear notching, and tag/ear tag in the ear. Premise tags may be used as ear tag id. Market hog entry fees will count towards entry fees in this class.

FFA, 4-H, AND INDEPENDENT COMBINED
THIS IS A DEFAULT CLASS FOR MARKET ENTRIES

DIVISION 1633

SINGLE FEEDER SWINE

Class

1. Feeder Pigs 150-209 lbs. and below
2. Super Heavy weights 281-300

CHAMPION AND RESERVE FEEDER
CHAMPION AND RESERVE SUPER HEAVY WT. -THESE ANIMALS ARE NOT ELIGIBLE TO SELL IN THE
JUNIOR LIVESTOCK AUCTION.

BREEDING SWINE

ENTRY FEE:

\$10.00

PRE ENTRY REQUIRED

CASH AWARDS OFFERED PER CLASS

<u>PLACE</u>	<u>AWARD</u>
1 ST Place	\$25.00
2 nd Place	\$20.00
3 rd Place	\$15.00

BREEDING SWINE WILL SHOW AFTER SHOWMANSHIP CLASSES DURING THE SECOND WEEK
Breeding hogs will haul in with all other hog projects, if it is possible breeding stock will be released after the completion of the show.

DIVISION 1700 REGISTERED BREEDING SWINE

(MUST HAVE REGISTRATION PAPERS FROM BREED SPECIFIED BREED ASSOCIATIONS TO SHOW IN THIS CLASS)

Class

1. Gilt Farrowed April 2022
2. Gilt Farrowed March 2022
3. Gilt Farrowed February 2022
4. Gilt Farrowed January 2022
5. Female Fall July 1-December 31, 2021
6. Female young yearling Jan 1 - June 31, 2021

NOTE: REGISTERED BREEDS AND GRADE HOGS MAY BE COMBINED IF CLASSES ARE LESS THAN 3 IN A CLASS

DIVISION 1701 GRADE BREEDING SWINE

Class

1. Gilt Farrowed April 2022
2. Gilt Farrowed March 2022
3. Gilt Farrowed February 2022
4. Gilt Farrowed January 2022
5. Female Fall July 1-December 31, 2021
6. Female young yearling Jan 1 - June 31, 2021

****PLEASE NOTE****

FFA/4-H and Independent Combined

ALL REGISTERED BREEDS AND GRADE ARE SHOWN TOGETHER

CDFA Rules

SWINE

Swine Entries from Other States

1. All exhibition swine entering California require official individual identification (ID), an Interstate Certificate of Veterinary Inspection (ICVI) obtained within thirty (30) days before movement into the state and listing official ID and a California entry permit prior to entry.
2. Acceptable forms of Official Identification include:
 - a. Official Ear tags - A tamper-resistant metal or plastic official identification tag with high retention rate that provides unique identification for individual animals. It must bear the US shield and conform to one of the following numbering systems: National Uniform Ear-tagging System (NUES), Animal Identification Number (AIN) or Premises Identification Number (PIN).
 - b. Ear notches or tattoos (ear or inner flank) if recorded in Purebred Registry Association Board with documentation attached to the ICVI

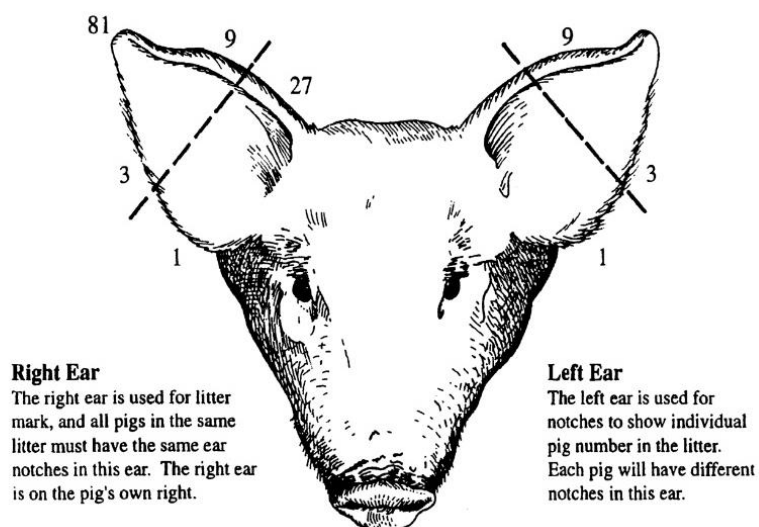
3. It is unlawful to remove official identification
4. No brucellosis or pseudorabies tests are currently required.

Exhibitors MUST upload photos and all required documents before submitting entries on line. All documents will be sent electronically.

ALL BFF EAR TAGS MUST REMAIN IN THE ANIMAL'S EAR. HARVEST FACILITIES WILL NOT ACCEPT ANIMALS WITHOUT EAR TAGS

**MANDATORY EAR NOTCHES
FOR PIGS TO BE ELIGIBLE TO SHOW IN MARKET CLASSES ALL HOGS MUST HAVE EAR NOTCHES FROM THE BREEDERS.
UNIVERSAL EAR NOTCHING SYSTEM**

The standard ear notch system will consist of a standard set of numbers and notches located in specific areas.



MADATORY PROP 12 INFORMATION REQUIRED FOR MARKET HOGS

BILLS OF SALE MUST HAVE THE FOLLOWING INFORMATION:

RANCH OR BREEDERS NAME

ADDRESS, CITY, STATE, ZIP

PHONE: (111)123-1223

DATE PURCHASED

ANIMAL IDENTIFICATION: NOTCH NUMBERS, PREMISE ID, FARM TAG OR TATOO
BREED, SEX

ON THE BILL OF SALE THE BREEDER OR FARM MANAGER MUST STATE THAT THE FARM OPERATES IN COMPLIANCE WITH ALL PROP 12 REGULATIONS AND STANDARDS.

A BREEDERS SIGNATURE IS REQUIRED ON THE DOCUMENT.

SHEEP RULES

FFA/INDEPENDENT/ 4-H/INDEPENDENT

All Lambs must be slick sheared prior to arrival on grounds.
Leg wool may be left. Lambs will be inspected for fungus prior to being weighed. Any lamb with active fungus will be removed from the fairgrounds immediately...

1. FITTING STANDS RULE: ALL Fitting stands must be kept out of the aisles. Please use tack pens for fitting and storing feed. No aisles may be blocked to the public when sheep are being fitted.

One blocking table for every 5 head of sheep.
 (Maximum of 5 tables per club or chapter).

FITTING STANDS		\$15.00
<u>NUMBER OF STANDS ALLOWED</u>		
<u>PER HEAD PER CLUB/CHAPTER</u>		
<u>5 STANDS MAXIMUM</u>		
1-5	head	1 stand
6-10	head	2 stands
11-15	head	3 stands
16-20	head	4 stands
21+	head	5 stands

2. IDENTIFICATION Ear notches are not considered a sheep I.D. method. **SHEEP MUST HAVE SCRAPIE IDENTIFICATION IN THEIR EAR AT ALL TIMES WHEN ON THE FAIRGROUNDS. SHEEP WILL NOT BE ALLOWED IN THE SHOW RING WITHOUT PROPER SCRAPIE IDENTIFICATION. REGISTRATION NUMBERS MAY NOT BE USED AS FLOCK NUMBERS.** Scrapie tags may not be tampered with or colored by the exhibitor. Flock numbers and breeder's initial name or association prefix shall be on regular and practical tags attached to the ear or tattooed in the ear for yearlings and lambs bred by the exhibitor.

LAMBS MUST SHOW LAMB TEETH. TEETH WILL BE CHECKED AT WEIGH IN.

All market lambs must be ear tagged and have both scrapie and RFID in the ears. If a scrapie tag is lost as long as the RFID tag is in place exhibitor may replace the scrapie tag from the breeder. If the RFID tag should be lost Scrapie identification will be used for identification and RFID will be replaced at a charge of \$10.00.

3. Tail Docking. To qualify for exhibit market lambs must be docked such that the tail (dock) is healed and can be lifted from the exterior. Lambs that have no dock will not be eligible. 2022 State Rules -- Page 15

DANISH SYSTEM OF JUDGING

<u>SCORE</u>		<u>SALE ELIGIBILITY</u>
PURPLE/BLUE	MARKET READY	Sale
RED/WHITE	NOT MARKET READY	NO Sale

American system will be used for placing of breeding animals.
 After weighing, market lambs may be divided into weight classes within the 100 to 150 pound limitation as desired for convenience of judging.
 All market lambs entered in the Fresno Fair must be slick sheared, on all parts of the body - besides shag on lower legs.

A Grand Champion and Reserve Grand Champion will be chosen from FFA/Independent, 4-H/Independent divisions.

THESE FOUR ANIMALS MUST SELL IN THE JUNIOR LIVESTOCK AUCTION

It is the intent of the Division of Fairs and Expositions that the quality standards established for market animals be maintained. Therefore, classifications will be subject to change in the event there are changes made in Federal grading.

All market animals will be judged by predominate breeds in each class as follows: Dorset, Natural Color, Southdown, Suffolk, Hampshire, Specs Cross, and all other meat breeds, all other wool breeds, Crossbreds.

<p>SHEEP FFA/INDEPENDENT-4-H/INDEPENDENT SINGLE MARKET LAMB</p>
--

ENTRIES DUE: Monday, August 1, 2022

List of Market Sheep Exhibitors Due July 1, 2022

IMPORTANT - Ear tags are ordered off this list of Exhibitors

ENTRY FEE PER ANIMAL

\$10.00

LIMIT: 2 HEAD PER EXHIBITOR.

DIVISION 1637

FFA/INDEPENDENT SINGLE MARKET SHEEP

DIVISION 1638

4-H/INDEPENDENT SINGLE MARKET SHEEP

Whether or ewe lambs 100 to 150 pounds

Whether or ewe lambs over 150 pounds

(Super-Heavyweight)

(Classes will be broken after weigh in)

**ALL MARKET CHAMPIONS WILL BE SELECTED AT 6:30 PM ON MARKET SHOW DAY
IN THE MIDDLE SHOW ARENA**

DIVISION 1606

BRED BY EXHIBITOR

PRE-ENTRY

Required

ENTRY FEE

\$ 10.00

Class

07 FFA Market Sheep

07.1 4-H Market Sheep

Bred by Exhibitor 4-H Champion and FFA Champion will compete for an overall champion.

DIVISION 1639

PEN OF TWO

PRE-ENTRY

Required

ENTRY FEE

None

Pen of two Market Lambs owned by one exhibitor shown in a Market class.

Class

1. FFA/Independent

2. 4-H/Independent

DIVISION 1640 **FFA CHAPTER GROUP-MARKET**
DIVISION 1641 **4-H CLUB GROUP-MARKET**
HAPTER/CLUB GROUPS (Only one Group per Chapter/Club)
PRE ENTRY None

Class

1. Five animals that have been shown in Market Division, owned by members of one chapter or club. No chapter/ club member may enter more than two animals.

SINGLE FEEDER LAMBS

<u>ENTRY FEE PER ANIMAL</u>	\$10.00
<u>PRE ENTRY</u>	REQUIRED

Feeder lambs must have Scrapie Tag in the lamb's ear, when entering the fair grounds

AMERICAN SYSTEM OF JUDGING WILL BE USED

(All breeds judged together)

DIVISION 1642 SINGLE FEEDER LAMBS

Class

1. Feeder Lambs below 70-99 lbs.

Champion and Reserve Champion

PRODUCTION EWES

<u>ENTRY FEE</u>	\$10.00
<u>PRE ENTRY</u>	REQUIRED

FFA, 4-H AND INDEPENDENT COMBINED
 ONLY DIVISION WINNERS WILL RECEIVE PREMIUMS CLASS WINNERS WILL RECEIVE RIBBONS

PLEASE NOTE:

ALL REGISTERED BREEDS AND GRADE
 WILL SHOW TOGETHER

4-H, FFA, AND INDEPENDENTS COMBINED

CASH AWARDS OFFERED PER CLASS

<u>PLACE</u>	<u>AWARD</u>
Champion	\$25.00
Res. Champ	\$20.00

Grade, crossbred and registered sheep to be judged strictly on a production ewe basis. **ALL EWES**

MUST BE WEIGHED IN
CLASSES WILL BE BROKEN BY WEIGHT
All Ewes will be mouthed at the scale for age
All ewes will be weighed in with Market Sheep
4-H AND FFA WILL SHOW TOGETHER

PRODUCTION EWES

ENTRY FEE PER ANIMAL
PRE ENTRY

\$10.00
REQUIRED

All Production ewes will be weighed for class breaks. Only division winners will be paid premiums. Class winners will be given ribbons only.

DIVISION 1634

Classes

1. Lamb
2. Pair of ewe lambs:

Two ewe lambs bred and owned by exhibitor.

(a) Ewe Lamb Class- All ewes must be carrying all milk teeth at the time of Check-In and Show. Lambs which show either or both of their first pair of permanent incisors will **not be** eligible to be shown in the Ewe Lamb Class.

Classes

3. Yearling
4. Pair of yearling ewes:
Two yearling ewes bred and owned by exhibitor.

(b) Yearling Class- All ewes must show one or both teeth of first pair of permanent incisors. Ewes which show one or both teeth of the first pair of permanent incisors are eligible to show.

Champion Production Ewe
Reserve Champion Production Ewe

PRE-ENTRY
ENTRY FEE

Required
None

DIVISION 1606 **BRED BY EXHIBITOR**

Class

- 06 Production Sheep FFA
06.1 Production Sheep 4-H

CHAPTER/CLUB GROUPS (Only one Group per Chapter/Club)

DIVISION 1635 **FFA CHAPTER GROUP BREEDING**

DIVISION 1636 **4-H CLUB GROUP BREEDING**

Class

1. **Five breeding** animals owned by members of one chapter or club. No chapter or club member may enter more than two animals.

**CAROLEE BOELE MEMORIAL
SHEEP LEAD &
New Fashionable Sheep Costume Contest**

**ENTRY FEE
PRE ENTRY**

**\$15.00
REQUIRED**

**Entries Due: August 31, 2022
NO LATE ENTRIES ACCEPTED**

Commentary due October 10, 2022
Email to: livestock@fresnofair.com

DIVISION 1601 SHEEP LEAD CLASSES

Class

1. 9-13 yrs. Sheep Lead
2. 14-19 yrs. Sheep Lead

LEAD CLASS SCORECARD

GENERAL APPEARANCE	50%
Coordination of ensemble (use of wool)	
Suitability of style	
Presentation of garment	
Coordination of outfit for sheep	
Eye appeal	
SHOWMANSHIP	30%
Ability to lead	
Handling of sheep	
Appearance of animal	
PERSONAL PRESENTATION	20%
Poise	
Gracefulness	
TOTAL	100%

RULES

1. Entrant must be an exhibitor in the Junior Department at The Big Fresno Fair and must be the OWNER OF THE ANIMAL used in the Lead Class and shown in a Junior Livestock Department class at THE 2022 BIG FRESNO FAIR.
2. Entry is open to all members of 4-H, FFA. Independents must be registered as such with this fair.
3. Entrants must furnish their own outfit, which must be made of either 100% wool or a minimum of 70% wool and no more than 30% synthetic fiber. Entries will be judged on mode of dress selected, which must be appropriate, attractive and lend elegance to the class. In the case of a purchased garment exhibitors must furnish a picture of the clothing tag which lists the fibers in the garment. This tag can also be referred to as the care label. It must stay connected to the garment during competition.
4. Lads & Ladies Lead contestants must provide sample(s) of fabric(s) used in the outfit provided with commentary for Class 1 and 2.
5. Outfits must not have been used at prior Fresno Fair Lead Classes by the exhibitor or another exhibitor.

6. Outfits do not have to be made by the entrant.
7. Entrants must also provide their commentary sheet of 200 WORDS OR LESS based on the qualifying event. The commentary must be typed (double-spaced) and written in "THIRD PERSON."
8. Sheep must be conditioned, fitted, and trained to show on halter.
9. **All grooming preparation for show must be done by entrant with advisor/leader/parent assistance is allowed. Entrant must be actively engaged in the fitting process.**

****NOT A COSTUME CLASS****

CASH AWARDS OFFERED PER CLASS

**FIRST PLACE WILL RECEIVE A BELT BUCKLE
IF ONE HAS BEEN SPONSORED**

<u>PLACE</u>	<u>AWARD</u>
1 st Place	\$25.00
2 nd Place	\$20.00
3 rd Place	\$15.00

Fashionable sheep awards to be announced.

1601.1 Fashionable Sheep Costume Contest

Class

1. 9-13 yrs.
2. 14-19 yrs.

This class is a costume contest with a freestyle spirit. We are encouraging our exhibitors to get creative. Please keep in mind that all costumes should be Animal friendly. Any costume that is not humane or animal appropriate will be disqualified.

Entrants must furnish their own outfit, which must be made of either 100% wool or a minimum of 30% wool and no more than 30% synthetic fiber.

**CAROLEE BOELE
SCHOLARSHIP FUND
BARNYARD OLYMPICS
WEEK ONE**

REGISTRATION TO BE ANNOUNCED

**SUNDAY, OCTOBER 9, 2022
WEEK TWO
SUNDAY, OCTOBER 16, 2022**

**SIGN UP SHEETS WILL BE LOCATED IN THE LIVESTOCK OFFICE
GAMES WILL START FOLLOWING REGISTRATION**

Games will be held in the Main Show Arena

Entries: \$10.00 per team

Teams consist of two exhibitors

**CHAMPIONSHIP ROUND FOR WINNERS
OF WEEK ONE AND WEEK TWO FOR THE BUCKLES**

**AWARDS: BUCKLES & RIBBONS
GAMES: TBA**



**CAROLEE BOELE
SCHOLARSHIP
LUNCHEON**

**THURSDAY, OCTOBER 13, 2022
12:00 NOON-1:00 PM**

\$5.00 DONATION

LUNCH INCLUDES: HOT DOGS /SAUSAGE DOG, CHIPS, AND A COOKIE

PLEASE JOIN US IN THE FOOD TENT

****PURCHASE TICKETS AT THE DOOR****

*****ALL PROCEEDS GO TO THE CAROLEE BOELE SCHOLARSHIP FUND*****

Hot Dogs Donated by: BFF

Sausage donated by: Sierra Nevada Farms

OPEN GOAT SHOWS I AND II

THE JUNIOR AND SENIOR DOE SHOWS
MAY BE SEPARATELY SANCTIONED.
IF ENTRIES SUPPORT A SANCTIONED SHOW
THE SHOW ORDER IS NOT SUBJECT TO CHANGE

ENTER ONLINE at www.FresnoFair.com

ENTRIES ARE DUE WEDNESDAY, AUGUST 31, 2022

ENTRY FEE

\$8.00 PER GOAT PER RING

ADGA RULES SHALL GOVERN

RULES GOVERNING GOAT SHOW

1. Arrival date: Animals that are coming from a dairy may be in place no later than 6AM day of show. Animals coming from individual breeders need to be in place by 6 PM Thursday October 6, 2022. We can only accept a small number of exhibitors the day of show due to parking restrictions Please call the Livestock office if you have any questions Debbie Barbarian. 559-570-3443.
2. Check out is Friday, October 7, 2022, at the conclusion of the show. If you choose to stay until Saturday for our Dairy Replacement Doe sale you are welcome, however no animals will be allowed to haul out between the hours of 8AM-8 PM.
3. The Fresno Fair WILL NOT provide the first bedding. ONLY straw or shavings may be used for bedding. Exhibitors must clean all pens prior to release.
4. There will be no pre-show milk-out.
5. This show will be sanctioned by ADGA. There will be one (1) judge for one ring, one (1) day show.
6. THE ORDER OF THE SHOW IS NOT SUBJECT TO CHANGE.
7. Milkers will show first.
8. **All milk being discarded must be deposited in the milk tank located in the milk barn.**
Do not discard milk in barn drains.

One substitution per class is allowed; 2nd substitution or more there will be a \$5.00 fee per substitution charged.

OPEN GOAT DIVISIONS

DIVISION 1 ALPINE (RING 1)
DIVISION 2 ALPINE (RING 2)

DIVISION 3 LA MANCHA (RING 1)
DIVISION 4 LA MANCHA (RING 2)

DIVISION 5 NUBIAN (RING 1)
DIVISION 6 NUBIAN (RING 2)

DIVISION 7 OBERHASLI (RING 1)
DIVISION 8 OBERHASLI (RING 2)

DIVISION 9 TOGGENBURG (RING 1)
DIVISION 10 TOGGENBURG (RING 2)

DIVISION 11 RECORDED GRADE GOATS (RING 1)
DIVISION 12 RECORDED GRADE GOATS (RING 2)

DIVISION 13 ALL OTHER PUREBREDS (RING 1)
DIVISION 14 ALL OTHER PUREBREDS (RING 2)

DIVISION 15 NIGERIAN DWARF (RING 1)
DIVISION 16 NIGERIAN DWARF (RING 2)

SENIOR SHOW

Class

1. Milking Yearlings	01/01/2021 - 12/31/2021
2. 2 yrs. old	01/01/2020 - 12/31/2020
3. 3 yrs. & 4 yrs. old	01/01/2018 - 12/31/2019
4. 5 yrs. & over before	12/31/2017

Sr. Champion Doe
Reserve Sr. Champion Doe

JUNIOR SHOW

Class

5. Junior Kids	05/01/2022 - 08/01/2022
6. Intermediate Kids	03/01/2022 - 04/30/2022
7. Senior Kids	01/01/2022 - 02/28/2022
8. Dry Yearlings	01/01/2021 - 12/31/2021

Jr. Champion Doe
Reserve Jr. Champion Doe

Best Doe in Show

All milk being discarded must be deposited in the milk tank located in the milk barn.
Do not discard milk in barn drains.

JUNIOR FUR & FEATHERS

TERRI O'LEARY-COLLINS, SUPERINTENDENT
SHOW COORDINATORS-DAVID COLMENARES-POULTRY
DEBBIE BERBARIAN/RABBITS, DOGS

THERE ARE NO CLASSES AVAILABLE IN THE JUNIOR DIVISION FOR PRIMARY 4-H MEMBERS. JUNIOR EXHIBITORS MUST BE 9 YEARS OF AGE AS OF DECEMBER 31, 2021.

ENTRIES ARE DUE: August 31, 2022

Enter online at www.FresnoFair.com

AUGUST 1, 2022--ADVISORS, LEADERS, PARENTS, MUST SUBMIT A LIST OF EXHIBITORS SHOWING MARKET CHICKENS FOR LEG BAND COUNT. SEND LIST VIA EMAIL TO:

Livestock@fresnofair.com

Rabbit Show: SATURDAY OCTOBER 1, 2022

7 AM - 8 AM Rabbit Check and weigh in

9 AM Rabbit Judging and Showmanship

Release of rabbits will be at completion of the rabbit show. All Champions and Sale rabbits will remain until October 9, 2022. Rabbits will be released with the other species.

**RELEASE FORMS AVAILABLE IN THE
FUR & FEATHERS OFFICE**

SUNDAY OCTOBER 2, 2022,

Scheduled Times will be given for inspection.

7 AM - 11AM Poultry Inspection/ Weigh in/COOP IN
Inspection to be held in butler chance parking lot.

12 Noon Meat Pen Judging Poultry

MONDAY OCTOBER 3, 2022

8: 00 AM Breeding Judging Poultry followed by Market Laying Hens

9:00 AM Market Bird Showmanship, followed by breeding bird showmanship.

4:00 PM Dog Show Main Arena

9:00 AM - POULTRY JUDGING, SHOWMANSHIP/BREEDING

Breeding birds will be released upon completion of the breeding show/Showmanship classes.

ALL PENS MUST BE CLEANED BEFORE LEAVING. A CHAMPION BIRD MUST BE LEFT OR SUBSTITUED WITH ANOTHER BIRD OF THE SAME VARIETY FOR THE DURATION OF THE FAIR.

MANDATORY- all students must clean their birds for poultry judging. All pens must be stripped/ cleaned daily. Judge may disqualify birds if pens are not clean. All market exhibitors MUST remain on grounds during market judging.

SATURDAY, OCTOBER 8, 2022

10 AM Small Animal Auction

SUNDAY, OCTOBER 9, 2022

9 AM Small animal round robin

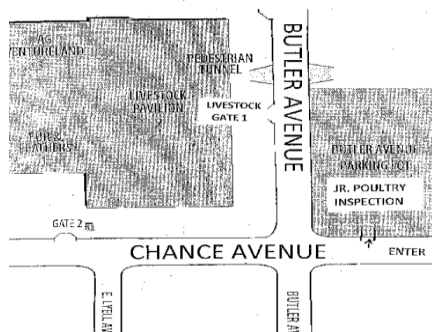
TBA RELEASE of all fur and feathers

**RELEASE FORMS AVAILABLE IN THE
FUR & FEATHERS OFFICE**

You must go through staging and enter through the BUTLER Avenue Livestock entrance and proceed to the Fur & Feathers area.

CHECK SCHEDULE FOR DATES AND TIMES.

**STAGING AREA
FOR JUNIOR POULTRY EXHIBITORS ONLY**



1. ALL EXHIBITS ARE ENTERED AT THE OWNERS RISK. THE FAIR, EMPLOYEES, JUDGES AND SHOW PERSONNEL ARE NOT RESPONSIBLE IN ANYWAY FOR LOSS, INJURY OR MORTALITY OF ENTRY/EXHIBIT.

Enter online at www.FresnoFair.com.

2. **Definitions and judging procedures:** as prescribed in appropriate rule books shall apply to all district and county fairs, provided they do not conflict with any other rules and regulations prescribed by the Department of Food and Agriculture, and the Standard book of Perfection of the American Poultry Assn., Inc. Where no American standard is in vogue, the latest European Standard will be used.
3. The state of California has been mandated by the CDFA to do poultry inspections prior to coop in. The inspections will be conducted by a Certified Poultry Inspector. The inspection will be conducted in the Chance Ave. /Butler parking area located on the S.E. Chance and Butler Ave.
4. All Junior Exhibitors must be dressed in appropriate attire, 4-H or FFA uniform or Independent attire, to present their animals for judging and auction.
5. Fur and Feathers showmanship Livestock *shown in* showmanship must be owned by the exhibitor, entered by exhibitor and shown in an appropriate market, breeding, or performance class at the 2022 Big Fresno Fair. If the exhibitor has a market animal that is weight sifted and as a result may not show in an individual market class, the exhibitor may use this animal for showmanship if and only if this animal is the only animal the exhibitor has brought to the Fair. No exhibitor shall attach any items that may distract a judge's attention.
6. **Ownership Requirements** as stated in CDFA rules, page 6, #7. Unless otherwise allowed in the exhibitor handbook, exhibitors must be legal owners of all entries. Ownership must be maintained through show dates.
All fur and feather entries must be part of a supervised project for a minimum of 60 days and each individual owned by the exhibitor for a minimum of 30 days.
7. ALL SPECIES MUST BE APPROPRIATELY IDENTIFIED I.E. PERMANENT TATTOO LEFT EAR MARKINGS, (for Rabbits); LEG BANDS (for poultry); any duplication of identifications by one exhibitor in the same division must be eliminated and the change recorded on the judging sheet BEFORE JUDGING.

8. **ALL POULTRY MUST GO THROUGH INSPECTION:**
All poultry must have forms completed before inspection by the state poultry inspector at staging. Market and Breeding inspection forms are available on-line or from the livestock office. SEE MAP PAGE 60.
(Poultry not passing inspection must be removed from the inspection area within one hour after inspection. No DQ birds are allowed on Fairgrounds, per CDFA rules.)
ENTRY FEES WILL NOT BE REFUNDED.
9. **NO DISEASED BIRDS/RABBITS WILL BE ACCEPTED AND ALLOWED ON FAIRGROUNDS.**
Please examine animals carefully before bringing to the inspection day and shows.
10. A judge may excuse an individual entry from competition because of temporary or curable defects.
11. **NO PERSON SHALL INTERFERE WITH THE JUDGE, CLERKS, OR STAFF. ALL JUDGES DECISIONS WILL BE FINAL. ANY PERSON PROVEN TO BE IN VIOLATION WILL BE DISMISSED FROM THE SHOW. THIS INCLUDES PARENTS, LEADER/EXHIBITORS. PREMIUMS AND AWARDS WILL BE PULLED. MARKET ENTRIES MAY BE SUBJECT TO NO-SALE. THE LIVESTOCK SUPERINTENDENT WILL MAKE THE FINAL DECISION.**
12. Each species will be shown and judged in the proper division and class for breed, variety, age, and sex as entered.
13. Ribbons and trophies won at other shows may not be displayed on coops either as decoration or advertising. Other signs or placards will not be acceptable **UNTIL AFTER JUDGING IS COMPLETE.**
14. **No exhibitor shall receive more than two cash awards in any one class as set forth in the state rules.**
15. It is the responsibility of each exhibitor to be aware of what time they show and to be at the show ring on time, dressed in show attire with your animal.
NO EXCEPTIONS WILL BE MADE!
16. **EXHIBITOR feeding hours: 6 AM to 8 AM, & 5 PM to 8 PM, NO EXCEPTIONS.** All exhibitors are expected to make sure that their animals are fed and cleaned. All chapters, clubs, independents will have a representative in the barn during fair hours. **EXHIBITORS ARE EXPECTED TO CLEAN AND MAINTAIN THEIR PENS.** The fair staff will make every effort to ensure that animals have water readily available at all times.
17. Market Pens will be judged using the Danish System. Group 1 and Group 2 are only eligible for auction. An American system will be used for the sale order.
18. Substitutions can only be made within the division/class. All substitutions must be made by: **Monday, September 26, 2022, by 4:30PM ONLY.**
No more than 2 substitutions per division/class.
19. Exhibitor may supply own crocks and/or feeders and will be responsible for them.
20. Animals will be furnished shavings. Exhibitors **MUST** keep their own pens clean and ready for exhibit. Exhibitors may supply their own water bottles (2 per entry) for freezing. Your bottles will be placed in cages to help keep rabbits cool.
21. All meat producing **MARKET PENS MUST FILL OUT DRUG FORMS AT WEIGH IN.** Drug forms will be available at the weigh in tables.
22. Exhibitors will be given buckles only after a Thank you card has been given to the fair staff with postage on the envelope.

JR. POULTRY/AVIAN

Poultry Entries from Other States

1. All exhibition poultry entering California require official identification (ID) and an Interstate Certificate 2022 State Rules – Page 28 of Veterinary Inspection (ICVI), unless coming from a flock participating in the National Poultry Improvement Program (NPIP) and accompanied by the documentation required by that program (VS Form 9-3).
2. All exhibition poultry entering California shall be free of any evidence of Avian Influenza, Virulent Newcastle Disease and all other contagious diseases.
3. Acceptable methods of official identification of poultry include:
 - a. Identification devices or methods approved for use in the NPIP, such as sealed and number leg bands or wing bands.
 - b. Group/lot identification with a group/lot identification number

ENTRY FEE PER CLASS
LIMIT

\$5.00
NONE

AMERICAN SYSTEM OF JUDGING

CASH AWARDS OFFERED

<u>PLACE</u>	<u>AWARD</u>
1 ST Place	\$10.00
2 nd Place	\$ 7.00
3 rd Place	\$ 5.00

JR. LARGE POULTRY

<u>DIVISION 1333</u>	AMERICAN BREEDS Plymouth Rocks, Rhode Island Reds, Jersey Giants, New Hampshire's, And Any Other Standard American Breed
<u>DIVISION 1334</u>	ASIATIC BREEDS Bahamas, Cochins, Langshans and Any Other Standard Asiatic Breed
<u>DIVISION 1335</u>	ENGLISH BREEDS Cornish, Orphingtons, Australorps, Sussex and Any Other Standard English Breed
<u>DIVISION 1336</u>	MEDITERRANEAN BREED Leghorns, Minorcas, Spanish, Andalusians, Anconas and Any Other Standard. Mediterranean Breed
<u>DIVISION 1337</u>	CONTINENTAL BREEDS <i>Hamburgs, Bearded and Non-Bearded Polish, Barnevelders, Houdans, Crevecœurs, La Felche, Welsummers, Faverolles, and Any Other Standard Continental Breed</i>
<u>DIVISION 1339</u>	ALL OTHER STANDARD BREEDS (AOSB) Phoenix, Aseels, Shamos, Araucanas, Ameraucanas, Old English Game and Any Other S.D. Large Breed.
<u>DIVISION 1340</u>	ANY NON-S.D. LARGE POULTRY – IDENTIFY This Does Not Include Crossbreeds.
<u>DIVISION 1341</u>	UTILITY THIS CLASS WILL BE JUDGED ON CONDITION ONLY.

Class

- | | |
|-------------|------------------|
| 1. Cock | 1 Year and Older |
| 2. Hen | 1 Year and Older |
| 3. Cockerel | Under 1 Year |
| 4. Pullet | Under 1 Year |

JR. BANTAM POULTRY

<u>DIVISION 1342</u>	BANTAM OLD ENGLISH GAME Black, Black Breasted Red, Brown Red, Silver Duckwing, White, Blue, Blue Breasted Red, Wheaten, Lemon Blue, Crele, and all other old English Varieties
<u>DIVISION 1343</u>	MODERN GAME All Modern Game Varieties
<u>DIVISION 1344</u>	SINGLE COMB CLEAN LEGGED BREEDS Australorps, Rhode Island Reds, Leghorns, New Hampshires, Phoenix, Plymouth Rocks and any other standard Single Comb Clean Legged Breed
<u>DIVISION 1345</u>	ROSE COMB CLEAN LEGGED BREEDS Hamburgs, Leghorns, Rosecombs, Sebrights, and any other Standard. Rose Comb Clean Legged
<u>DIVISION 1346</u>	ALL OTHER COMBS CLEAN LEGGED BREEDS Ameraucanas, Araucanas, Cornish, Houdans, Polish, Shamos
<u>DIVISION 1347</u>	FEATHER-LEGGED BANTAM BREEDS Brahmas, Cochins, Faverolles, Langshans, Silkies, Sultans, and any other feather-legged bantam breed
<u>DIVISION 1348</u>	ANY NON-STANDARD BANTAM BREEDS - IDENTIFY This does not include Crossbreeds.
<u>DIVISION 1349</u>	UTILITY BANTAM This class will be judged on condition only.
<u>Class</u>	
1. Cock	1 Year and Older
2. Hen	1 Year and Older
3. Cockerel	Under 1 Year
4. Pullet	Under 1 Year

JUNIOR BREEDING TURKEYS

<u>ENTRY FEE PER CLASS</u>	\$5.00
<u>LIMIT</u>	NONE
<u>AMERICAN SYSTEM OF JUDGING</u>	

CASH AWARDS OFFERED

<u>PLACE</u>	<u>AWARD</u>
1 ST Place	\$10.00
2 nd Place	\$ 7.00
3 rd Place	\$ 5.00

DIVISION 1351 ANY STANDARD BREED/VARIETY

Class

1. Old Tom/Young Tom
2. Old Hen/Young Hen

POULTRY MARKET ANIMALS

All birds must be the appropriate weight and size.

DESCRIPTION:

Chickens not over ten weeks old

Light weights 4 ½ -6 pounds each bird.

Heavyweights over 6-8 pounds each bird.

Chickens over 8 pounds will be disqualified.

Turkeys

Hens not over 20 weeks of age and **Toms not over 24 weeks of age**. Suggested weights- Hens 17-18 pounds at 20 weeks of age, and Toms 28 pounds at 20 weeks, 35 pounds at 24 weeks.

CHICKENS OVER 8 POUNDS WILL BE SIFTED AT THE SCALE.

Hatch receipts are required with entry

Exhibitors are limited to the sale of one Small Animal pen; Turkeys, Chickens or Rabbits, and one (1) Layer Replacement pen.

Exhibitors with a Market Turkey or a pen of Market Chickens are to assist in cleaning pens during their stay at the fair.

All Meat Birds and Layers must be banded prior to health inspection. Band numbers must be on entry forms. All market birds must be able to support their own weight for 45 seconds.

Market I.D. forms must be complete and be presented to health inspector at inspections site.

ENTRY FEE PER CLASS

\$ 12.00

LIMIT:

1 Pen per Exhibitor

DIVISION 1360

Market Chickens

Class

1. Pen of 2 Meat Chickens FFA
2. Pen of 2 Meat Chickens 4-H

DIVISION 1361

Market Turkey

Class

1. Pen of 1 Turkey FFA
2. Pen of 1 Turkey 4-H

REPLACEMENT LAYING HENS

ENTRY FEE PER CLASS

\$ 12.00

LIMIT:

2 Pen per Exhibitor

DIVISION 1362

POULTRY

Class:

1. Pen of 2 layers FFA - Large (Commercial Type) 8 to 12 months of age
2. Pen of 2 layers 4-H - Large (Commercial Type) 8 to 12 months of age

CHICKEN EGG QUALITY CONTEST

Division 1300

ENTRY FEE:

\$ 3.00

LIMIT:

2 Plate

Entry to consist of a group of 3 eggs displayed on plates provided. Eggs are due in the Fur and Feathers office no later than 3PM coop in day.

Classes

1. Large Eggs: Breed or Non-Standard & Color noted on entry
2. Bantam Eggs: Breed or Non-Standard & Color noted on entry
3. Waterfowl Eggs: Breed or Non-Standard & Color noted on entry
4. Non-Standard Eggs: If breed is known.

The Egg Competitions

An egg show exhibitor does not have to show in the actual *in cage* show. Egg Competition Classes are offered to 4-H, Independents, and FFA.

MAIN EGG COMPETITION STANDARD:

Please note: In this division, eggs will not be judged the same as commercial eggs. Per the APA Board - The APA does not judge chickens, waterfowl, etc. according to commercial specifications and will not do so for the egg entries.

EXTERNAL CHARACTERISTICS

Proposed Classes for Main Egg Section - Open and Junior

NOTE: Non-Standard Eggs include birds not accepted in the *APA Standard of Perfection*, Mixed breeds and those of unknown ancestry.

JUDGING CRITERIA: Eggs to be uniform in shape, shell texture, size, color and appearance. Eggs must be delivered to the Fur and Feathers office the day that you coop in.

**Awards to be announced
4-H/FFA/Independent will all compete together**

PAINTED EGG STANDARD SIZE

ENTRY FEE:

\$ 3.00

LIMIT:

1 Egg per Class

One egg per entry.

(Egg size may be chicken, goose, duck, guinea, turkey)

Division 1301

Class 1

Painted or Inked

1. Entry to be hard-boiled or blown.
2. Egg to be painted or inked.
3. No decoration may be applied.
4. Some type of upright support is recommended for display.
5. Egg **MUST** be painted or inked by the exhibitor.

Class 2

Decorated Egg Standard

One egg per entry. (Egg size may be chicken, goose, duck, guinea, turkey)

1. Entry must be blown or hard-boiled.
2. Decorated egg may also be painted. Examples of adornment are beads, colored paper, shells, plant materials, etc.
3. Whatever the design chosen, the outline of the egg must be maintained, its shape always being recognizable.
4. Egg decoration **MUST** have been created by the exhibitor.

Egg Laying Contest

ENTRY FEE

\$3.00

DIVISION 1302

Class

1. FFA
2. 4-H

Laying hens will be judged on the number of eggs laid during the time they are cooped in at the fair. Each exhibitor participating will furnish an egg crate labeled with the exhibitors name and Coop number & leg band numbers. All hens entered in this contest must be entered in the Laying hen market division.

Awards to be announced

4-H/FFA/Independent will all compete together

JUNIOR RABBITS

RABBIT AND CAVY Rabbit and Cavy Entries from Other States

1. All rabbits and cavies are recommended to have an Interstate Certificate of Veterinary Inspection (ICVI). An ICVI is required if coming from a state affected by Rabbit Hemorrhagic Disease (RHD). Animals must be inspected by an accredited veterinarian within 72 hours prior to shipping to California. The following statements, listed on California's regional quarantine, must be included on the ICVI:
All rabbits and hares in the shipment have been examined for and found free of communicable diseases, and
 - All rabbits and hares have originated from a single premises that has no signs of a communicable disease, and
 - There have been no movements of rabbit and hares onto the premises over the past 30 days, and
 - The animals have had no contact with wild rabbits or hares in the past 30 days.
2. Persons who intend to bring their animals back to the origin state after the show should check with their state's Department of Agriculture to make sure the animals will be allowed to return to origin state.

ENTRY FEE PER CLASS

\$8.00

LIMIT

None

AMERICAN SYSTEM OF JUDGING

AWARDS OFFERED

**BEST OF BREED
BEST OPPOSITE OF BREED
BEST OF VARIETY
BEST OPPOSITE OF VARIETY**

SELECTED FROM CHAMPIONS OF EACH RABBIT DIVISION

JUNIOR HEAVYWEIGHT RABBITS

<u>DIVISION 1302</u>	CALIFORNIAN
<u>DIVISION 1303</u>	FRENCH LOP
<u>DIVISION 1304</u>	NEW ZEALAND
<u>DIVISION 1305</u>	ANY OTHER BREED

Class

- | | |
|----------------------|------------------------|
| 1. Senior Buck | 8 months of age & over |
| 2. Intermediate Buck | 6 to 8 months of age |
| 3. Junior Buck | Under 6 months of age |
| 4. Sr. Doe | 8 months of age & over |
| 5. Intermediate Doe | 6 to 8 months of age |
| 6. Junior Doe | Under 6 months of age |

LIGHT WEIGHT RABBITS

<u>DIVISION 1308</u>	DUTCH
<u>DIVISION 1309</u>	MINI LOPS
<u>DIVISION 1310</u>	NETHERLAND DWARF
<u>DIVISION 1311</u>	HOLLAND LOPS
<u>DIVISION 1312</u>	MINI REX SOLID
<u>DIVISION 1312.1</u>	MINI REX BROKEN
<u>DIVISION 1313</u>	POLISH
<u>DIVISION 1314</u>	ANY OTHER BREED IDENTIFY

Class

- | | |
|----------------|------------------------|
| 1. Senior Buck | 6 months of age & over |
| 2. Junior Buck | Under 6 months of age |
| 3. Senior Doe | 6 months of age & over |
| 4. Junior Doe | Under 6 months of age |

FUR ANIMALS

ANIMALS MUST HAVE BEEN SHOWN AND QUALIFIED IN PREVIOUS BREED DIVISION.

ENTRY FEE PER CLASS

\$8.00

LIMIT

NONE

DIVISION 1316 FUR ANIMALS

Class

1. Rex
2. Normal
3. Satin
4. Wool

AMERICAN SYSTEM OF JUDGING CASH AWARDS OFFERED

<u>PLACE</u>	<u>AWARD</u>
1 ST Place	\$10.00
2 nd Place	\$ 7.00
3 rd Place	\$ 5.00

JUNIOR RABBIT MARKET ANIMALS

AGE LIMIT	10 Weeks
MINIMUM WEIGHT	3 ½ lbs. each
MAXIMUM	5 ½ lbs. each

ENTRY FEE PER CLASS \$15.00

ENTRY LIMIT none

(Only one pen will be allowed to show)

RABBIT JUDGING WILL BE CONDUCTED FROM THE AMERICAN RABBIT BREEDERS ASSOCIATION
STANDARDS & GUIDE FOR JUDGING MEAT CLASSES AND MEAT PENS

All exhibitors may enter single fryer classes in case of disqualified pen animals. Single fryer classes must be entered by the entry deadline date in order to be eligible to substitute from a pen to a single fryer. No substitutions will be done the day of weigh in unless entries have been received by entry deadline listed above.

DIVISION 1317

Meat Market Rabbits

- Class
1. Single Fryer-4-H
 2. Single Fryer-FFA
 3. Pen of Three-4-H
 4. Pen of Three-FFA

RULES

1. All rabbits must be the appropriate weight and size. Rabbit meat pens shall be of the same breed and variety.

MEAT STANDARDS

Four factors, in the order of their importance, for judging meat pens, are as follows (1) Meat type, (2) Condition, (3) Uniformity, and (4) Fur Meat pens shall consist of the three rabbits, all of the same breed and variety. Broken group meat pens must also be of the same variety. A meat pen does not necessarily have to come from the same litter. Age limit 10 weeks. Minimum weight 3 ½ pounds each. Maximum weight 5 ½ pounds each. All rabbits must be weighed-in by Fair staff, or in the presence of the judge.

POINT SCHEDULE FOR JUDGING MEAT PENS

Meat type	40 Points
Condition of Flesh	30 Points
Uniformity of body and weight	20 Points
Fur	<u>10 Points</u>
TOTAL	100 Points

MEAT TYPE 40 points

The most desirable animals are those with commercial type. The body should be heavily muscled and well rounded. The back legs should be thickly muscled and extend far down the leg toward the hock joint. The loin should be wide and thick starting from the rib cage and continuing to the hip loin juncture. The rib cage should be deep, well sprung, and have a wide chest floor to properly house the heart and lungs, all of which are vital in the animals growth. The front legs should also be considered in the evaluation of the animal and should carry enough muscle to balance and correctly support the animal loin/midsection are second of importance. The hind quarters are most important, and forequarters are third in importance.

FAULTS: Fault for large frame, heavy bone, large head, thick ears, heavy hide. Fault animals that are thinly muscled, tapered in the loin, narrow chested, and exhibit protruding hips.

CONDITION 30 Points

All fryers in a pen must be in prime condition. This reflects the care and management practices of the breeder. The fryers must be firm and solid. They must not show any signs of flabbiness, softness, looseness, or pottiness. The pelt must be tight over the body and the animals must be clean and show no signs of neglect or disease.

UNIFORMITY 20 Points

Uniformity reflects the ability of the exhibitor to select three fryers for the pen that have similar traits. Uniformity must be present in weight, size, appearance, condition, meat type, and fur, and should be as similar in all respects as possible. (All six elements of uniformity are to be valued evenly.)

FAULT: Lack of uniformity.

FUR 10 Points

Fur should conform to the breed description in the standard and be uniform on all three animals in the pen.

DISQUALIFICATION FROM COMPETITION

All ARBA disqualifications from competition and breed disqualification from competition apply to each meat pen, with the following exception: Body smut on pointed white marked animals. Bucks must show both or either testicle. Those showing only one at time of judging, are to be disqualified from competition.

FAULTS: Stained or Dirty animals

NOTE: *On Californian meat pens and single fryers, the frosting due to genetic characteristic or nest box chilling shall not be a disqualification. Such animals are to compete as if their pelts were white, as called or underweight, the entire pen is disqualified from competition. If anyone rabbit in the pen is disqualified from competition, the entire pen becomes disqualified. All ARBA general faults apply to each meat pen.*

All rabbits must be the appropriate weight and size. Rabbit meat pens shall be of the same breed and variety.

4-H/INDEPENDENT SHOWMANSHIP

ENTRY FEE PER CLASS:

\$10.00

Exhibitors may only enter in one showmanship class per species.

CASH AWARDS OFFERED PER CLASS

<u>PLACE</u>	<u>AWARD</u>
1 ST Place	\$20.00
2 nd Place	\$15.00
3 rd Place	\$10.00

Entry must have been shown in feeder, market or breeding class.

DIVISION 1382

SENIOR SHOWMANSHIP

Must be 14 years old on or before December 31, 2021.
Age 14 and up

DIVISION 1383

INTERMEDIATE SHOWMANSHIP

Must be 11 years old on or before December 31, 2021.
Ages 11-13

DIVISION 1384

JUNIOR SHOWMANSHIP

Must be 9 years old on or before December 31, 2021.
(Ages 9-10)

ORDER OF JUDGING

Senior
Intermediate
Junior

FFA/INDEPENDENT SHOWMANSHIP

ENTRY FEE PER CLASS:

\$10.00

Exhibitors may only enter in one showmanship class per species.

CLASS

- 1 RABBITS
- 2 POULTRY

DIVISION 1385

ADVANCED GRADUATE SHOWMANSHIP - This Division is open to all Junior, Senior and Graduate FFA/Independent members.

DIVISION 1386

INTERMEDIATE SHOWMANSHIP

This Division is open to all FFA/Independent Freshman and Sophomores.

DIVISION 1387

NOVICE SHOWMANSHIP

This Division is open to Novice first time showmen only in each species. A novice showman is one who has never shown an animal in that particular species, including any other organization such as 4-H or Independent and Jackpot shows at time of entry. Round robin winners count as a show.

ORDER OF JUDGING

Advanced
Intermediate
Novice

DOGS

Entry Fee: **\$ 10.00**

ENTRY LIMITS: One dog per exhibitor.

One Obedience Class and one Showmanship Class per dog.

All entries must be completed on line. Proof of Vaccinations and Rabies Certificate must be uploaded with online entries. No Exceptions

FEMALES IN HEAT WILL NOT BE ALLOWED TO EXHIBITED

Entries Due: August 31, 2022

On-Line Only ENTER ONLINE at www.FresnoFair.com

Dog Rules

1. Enter online at the fair's website: www.fresnofair.com
2. Dogs must be on a leash at all times and under control. Unruly or aggressive dogs will be removed.
3. Owners will clean up after their own animals.
4. All exhibitors must possess valid Rabies and Parvo vaccination papers for their dogs.
5. Dogs must be at least 6 months old, have current vaccinations and be trained by member exclusively during project year.
6. Female Dogs in season will NOT be allowed on the Fairgrounds.
7. No exhibitor may handle more than one dog in any one class.
8. Judging and scoring will be according to the AKC regulations.
9. Best in Showmanship winners are eligible to compete in Small Animal Master Showmanship
10. Each exhibitor will be judged individually by the judge.
11. Exhibitors must be in complete 4-H/FFA uniform in order to compete in showmanship. See requirements for uniforms in this handbook under General Information.
12. The Big Fresno Fair is not responsible for loss, death, or injury of any animals. All possible care will be taken for your animals.
13. All trophies and rosettes must be picked up at close of show.
14. All premiums payback will be mailed after the show.
15. Dog must be owned by the exhibitor.
16. Each exhibitor will be required to go through the standard showmanship procedure individually as instructed by the judge.
17. Each exhibitor is responsible for keeping his/her animal under control at all times.
18. Any further instruction will be given at judging.
19. Age requirements as noted.

SHOWMANSHIP

Entry Fee:

\$ 10.00

ENTRY LIMITS:

One dog per exhibitor

DIVISION 1358

Class

1. 4-H/INDEPENDENT-- Junior (Ages 9-10)
Must be 9 years old on or before December 31, 2021.
2. 4-H/INDEPENDENT—Intermediate-(Age 11-13)
Must be 11 years old on or before December 31, 2021.
3. 4-H/INDEPENDENT—Senior- (Age 14 and up)
Must be 14 years old on or before December 31, 2021.

SHOWMANSHIP

DIVISION 1358

Class

4. FFA/INDEPENDENT-NOVICE
(Never Shown a DOG Before)
5. FFA/INDEPENDENT-INTERMEDIATE
6. FFA/INDEPENDENT-ADVANCED

SHOWMANSHIP RULES

1. Each exhibitor will be judged individually by the judge.
2. Exhibitors must be in complete 4-H/FFA uniform in order to compete in showmanship. See requirements for uniforms in this handbook under General Information.
3. Each exhibitor will be required to go through the standard showmanship procedure individually as instructed by the judge.
4. Each exhibitor is responsible for keeping his/her animal under control at all times. Bait is allowed and should be carried in pocket or bait bag, show leads are recommended
5. Any further instruction will be given at judging.
6. The intent of this fitting rule is that junior exhibitors are primarily responsible for the fitting, grooming and/or showing of their own animals, without the physical assistance of adults and/or professionals. Recognizing that some physical assistance is often required, individuals who are eligible to be junior exhibitors in the Junior Dog Show are allowed to physically assist in the fitting, grooming and/or showing of an exhibitor's animal.
7. Grooming is to take place in the Grooming Area only.
8. All vehicles will be able to drop exhibitors and dogs off at the Chance gate. No vehicles will be allowed to park on the fair grounds. They must be parked in designated parking area.
9. Exhibitor lists specific time and place of show, credentials and other information regarding the Dog Show will be sent to participants prior to the show day.

FRESNO FAIR SHOWMANSHIP

EXERCISES INCLUDE:

1. Gait in circle control of dog	15 points
2. Gaing Pattern	15 points
3. Individual Examination	15 points
4. Return to Line up	10 points
5. Attention to Judge	15 points
6. Proper use of Lead	5 points
7. Cleanliness-Grooming of Dog	15 points
8. Poise- Knowledge	10 points
Total	100 points

DOG OBEDIENCE

Entry Fee:

\$ 10.00

ENTRY LIMITS:

One dog per exhibitor.

DIVISION 1359

Class

1. 4-H/INDEPENDENT- 1 year in program
2. 4-H/INDEPENDENT- 2-3 years in program
3. 4-H/INDEPENDENT- 4 years in program

DIVISION 1359

Class

4. FFA/INDEPENDENT - 1 year in program
5. FFA/INDEPENDENT - 2-3 years in program
6. FFA/INDEPENDENT - 4 years in program

DOG OBEDIENCE RULES

1. Classes will be divided according to the both the Exhibitor's and the dog's number of years in obedience training and showing.
2. Classes will be determined by the number of entries according to the level of both the Exhibitor's and dog's experience in obedience and showing. Sub classes may be added as necessary to divide the class
3. Exhibitor must list on entry form the number of years of experience in obedience and training for both the dog and the exhibitor.
4. Exhibitors must be in complete 4-H/FFA uniform in order to compete in obedience. See requirements for uniforms in this handbook under General Information.
5. Each exhibitor is responsible for keeping his/her animal under control at all times.
6. Exercises will be in accordance with AKC regulations, except Novice, which will be modified with no off-lead heeling and group sits and down will be on lead.
7. Any further instruction will be given at judging.
8. Age requirements as noted.

CASH AWARDS

<u>PLACE</u>	<u>AWARD</u>
1 ST Place	\$20.00
2 nd Place	\$15.00
3 rd Place	\$10.00

FRESNO FAIR OBEDIENCE TRIAL SCORE SHEET:

1. Heel ON/OFF Lead	40 Points
Depending on the class and FIGURE	8 Points
2. Stand for Examination	30 Points
3. Recall	30 Points
4. Long Sit	30 Points
5. Long Down	30 Points
Total	168 Points