

GEORGIA

National Fairgrounds & Agricenter Facilities Overview

Includes Unique Facts, Events, Map, Commercial Space, Attractions and much more!

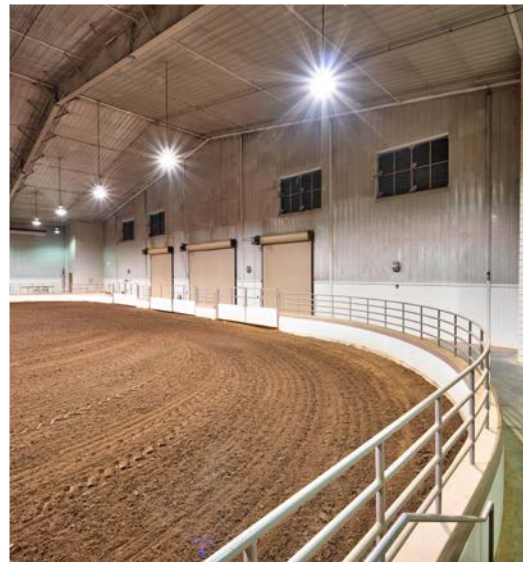
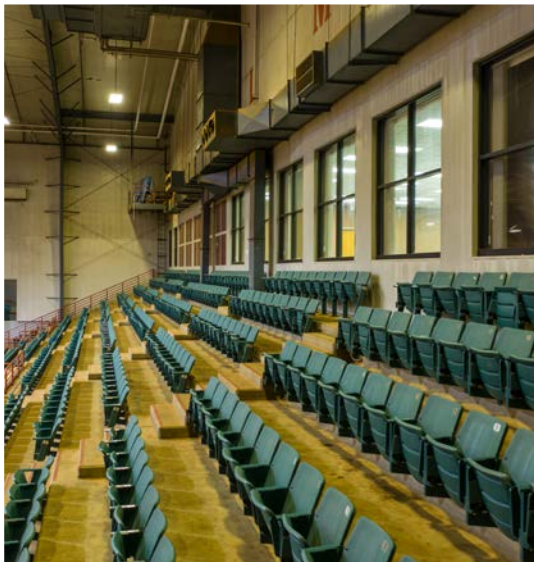
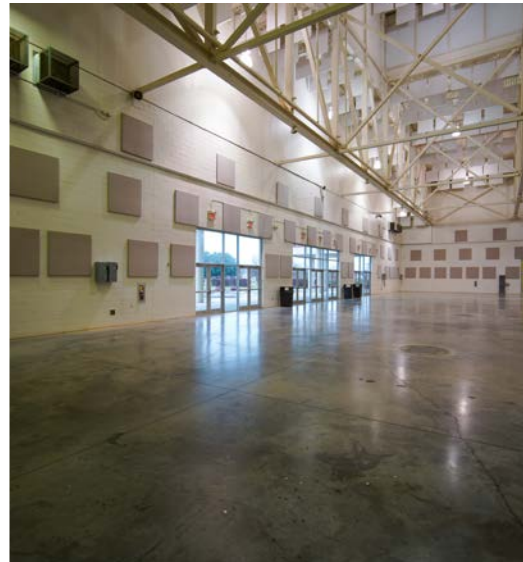


TABLE OF CONTENTS

Facility at a Glance	3
Map.....	4-5
Meeting, Convention, & Tradeshow Space	
Miller-Murphy-Howard Building	7
Georgia Grown	8
Heritage Hall	9
McGill Marketplace	10
Roquemore	11
Fairview	12
Livestock Barns & Arenas	
Reaves Arena	14
Sutherland Arena	15
Perdue Arena	16
Foster Rhodes Beef & Dairy Arena	17
New South Arena	18
Sheep & Swine 1	19
Sheep & Swine 2	20
Beef & Dairy Barn	21
Multipurpose	22
Horse Barn 1	23
Horse Barn 2	24
Practice Ring 2	25
Practice Ring 3	26
Corral Building	27
On-site Accommodations & Hotels	28
Perry Attractions	29
State Attractions	30
Area Attractions	31

Facility at a Glance

- **Located in Perry, GA – 20 minutes south of Macon, GA, and 90 minutes south of Atlanta, GA**
- **1,130 acres (the largest fairgrounds in the country)**
- **Conveniently located on I-75 and accessible from exits 134 & 135**
- **Fully landscaped, theme-park type setting**
- **Four fully stocked and maintained ponds**
- **1,400 hotel rooms within 2 miles of the Fairgrounds**
- **Over four miles of internal roadways**
- **24 hour security**
- **1,025 full service R.V. hookups (water and electrical)**
- **30 amp and 50 amp connections available**
- **Can host a variety of events – Trade Shows, Expos, R.V. Rallies, Wedding Receptions, Dog Shows, Livestock and Equine Events, Car Shows, Rodeos... plus many more!**
- **277, 350 sq. ft. in meeting/convention space**
 - Reaves Arena – (8,200 seats, 31,250 sq. ft. on floor)
 - Miller-Murphy-Howard Building – (65,000 sq. ft.)
 - Multipurpose Livestock/Exhibit Building – (87,000 sq. ft.)
 - McGill Marketplace – (36,000 sq. ft.)
 - Georgia Grown Building – (27,600 sq. ft.)
 - Heritage Hall – (18,000 sq. ft.)
 - New South Arena – (1,676 seats, 4,860 sq. ft.)
 - Roquemore Conference Center (7,500 sq. ft.)
 - Fairview Room (1,716 sq. ft.)
- **Wireless Internet and electrical grids located in buildings**
- **On site catering, concessions, and restaurant**
- **Go Fish! – Georgia's State Fish Museum located on site**
- **Has been the site of many National Specialty Dog Shows and annually hosts the Peach Blossom Cluster (largest Dog Show in the U.S.)**
- **Has been the site of many National RV Rallies (FMCA, Affinity, Holiday Rambler, NAARVA, and others)**



GEORGIA NATIONAL FAIRGROUNDS & AGRICENTER

CAMPUS *map*





401 Larry Walker Parkway
Perry, Georgia 31069



478.987.3247 phone
800.987.3247 toll free
478.987.7218 fax



www.gnfa.com
www.georgianationalfair.com



◀ South Perry Parkway ▶

MEETING, CONVENTION, & TRADESHOW SPACE



MILLER-MURPHY-HOWARD BUILDING

The Miller-Murphy-Howard Building is a premier exhibit, conference, and meeting space. It is an ideal space for conferences and shows that need both meeting and break-out areas.



Exhibit Hall Features

- Climate-controlled
- Electric floor grid
- Paging system
- Concession stands
- 2 roll-up doors (23' x 24')
- 2 roll-up doors (11' x 11')
- Restrooms
- Available portable stage



Exhibit Hall Capacities

- 40,500 sq. ft.
- 150' x 270' floor space
- Seating for 1,800 (banquet style)
- Seating for 5,000+ (lecture style)
- 204 trade show booths (10'x10')



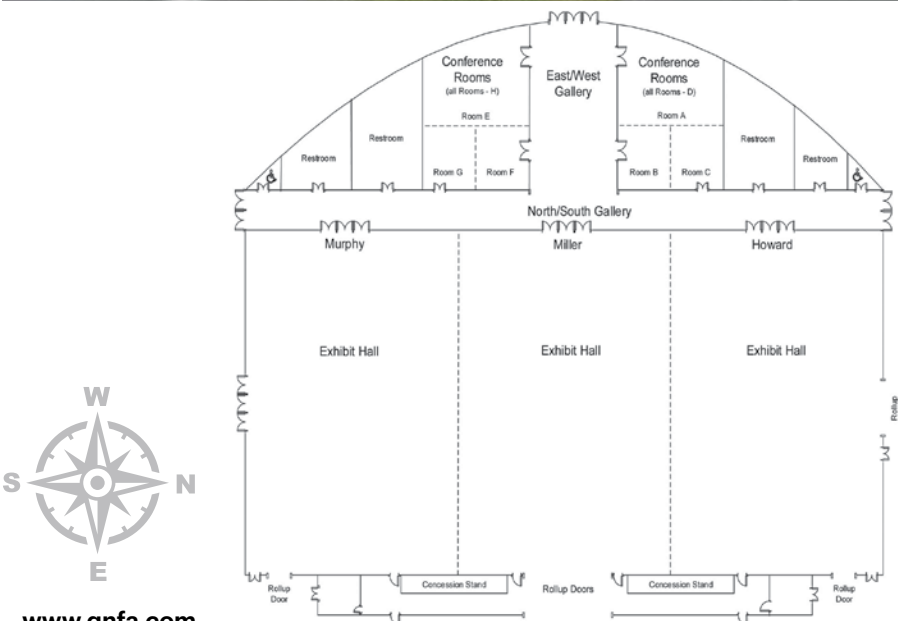
Conference Room Features

- Climate-controlled
- Electric floor grid
- Carpeted floors
- Paging system
- Drop down screens
- Automatic window shades
- Restrooms



Conference Room Capacities

- 2,900 sq. ft.
- 144 banquet seats
- 240 lecture seats





GEORGIA GROWN

The flexibility of the Georgia Grown Building makes it very accommodating for a variety of activities. This building can be transformed into whatever your requirements demand.



Usage

- Trade shows
- Meetings
- Lectures or rallies
- Antique shows
- Arts & crafts shows
- Dog shows
- Boat, car, or RV shows
- Civic and community club activities
- Dances or parties
- Wedding receptions



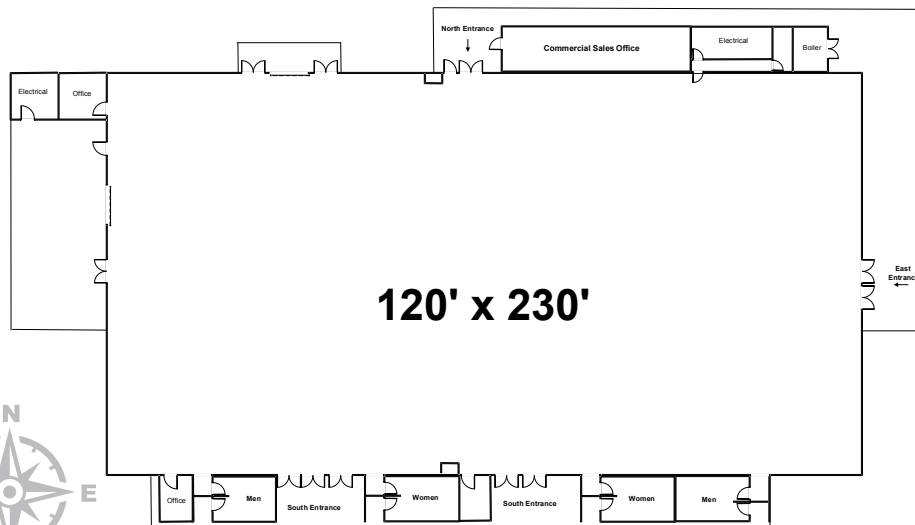
Features

- Climate-controlled atmosphere
- Electric floor grids
- Paging system
- Outside concession stand
- Portable stage available
- Two roll-up doors (12' x 14') for easy loading and unloading
- Restrooms



Capacities

- 27,600 square feet
- 120' x 230' floor space
- 1,000 banquet seats
- 1,500 lecture seats
- 120 (10' x 10') trade show booths
- 20' x 40' clear span ceiling





HERITAGE HALL

Heritage Hall has features to make it as versatile as your event is unique. This building has many amenities that you would expect to find in a building twice its size.



Usage

- Trade shows
- Meetings
- Arts and crafts shows
- Dog Shows
- Boat, car, or RV shows
- Antique shows
- Lectures or rallies
- Dances or parties
- Civic and community club activities



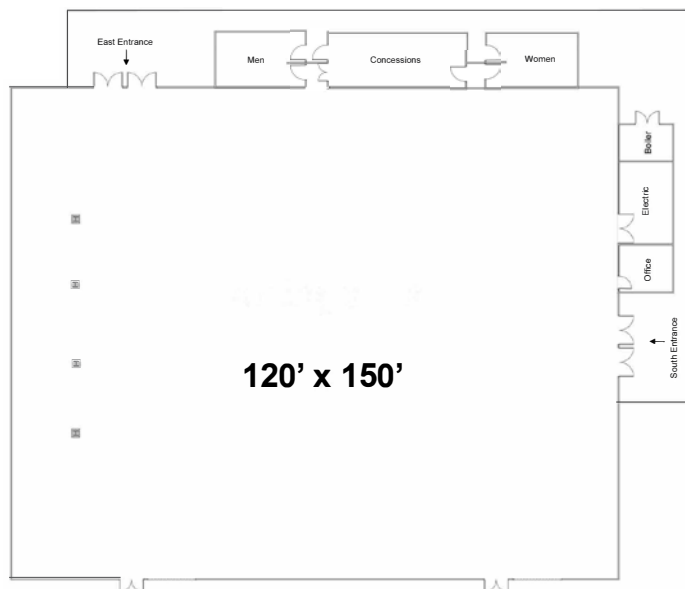
Features

- Climate-controlled atmosphere
- Electric floor grids
- Paging system
- Portable stage available
- 2 roll-up doors (12' x 24') for easy loading and unloading
- Restrooms
- Concession stand



Capacities

- 18,000 square feet
- 120' x 150' floor space
- 800 banquet seats
- 1,650 lecture seats
- 90 (10' x 10') trade show booths
- 20' x 40' clear span ceiling





MCGILL MARKETPLACE

The McGill Marketplace is a premier location for trade shows. The building accommodates and is ideally suited for a vast number of different events.



Usage

- Trade shows
- Meetings
- Gun and knife shows
- Fishing and hunting shows
- Arts and crafts shows
- Antique shows
- Dog Shows
- Boat, car, or RV shows
- Lectures or rallies
- Dances or parties



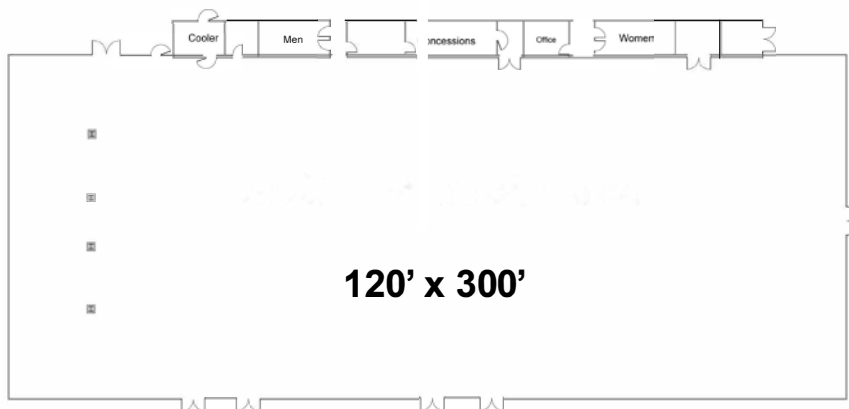
Features

- Climate-controlled atmosphere
- Electric floor grids
- 24' x 40' clear span ceiling
- Paging system
- Portable stage available
- 2 roll-up doors (12' and 14') for easy loading and unloading
- Concession stand
- Restrooms



Capacities

- 36,000 sq. ft.
- 120' x 300' floor space
- 2,424 lecture seats
- 190 (10' x 10') trade show booths
- 1,600 banquet seats





ROQUEMORE CONFERENCE CENTER

Roquemore Conference Center provides additional meeting space needed by conference planners. This building offers flexibility for conference break-out sessions, and also serves as an excellent location for smaller banquets and special events.



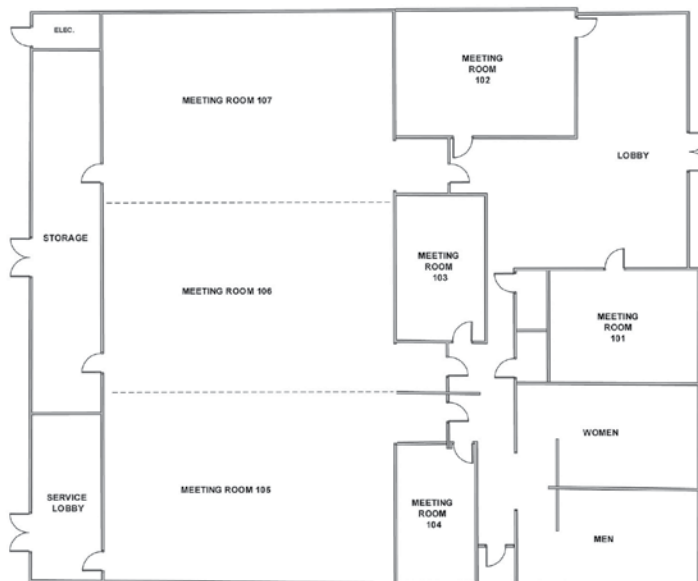
Features

- Climate-controlled
- Movable walls allow room 108 to be divided into 2 or 3 rooms
- Restrooms
- Carpeted floors
- Covered walkways to McGill Marketplace and Heritage Hall



Capacities

- 7,500 total sq. ft.
- Room 101: 252 sq. ft (14'x18')
- 15 lecture seats, 12 classroom seats
- Room 102: 408 sq. ft (17'x24')
- 25 lecture seats, 24 classroom seats
- Rooms 103 & 104: 252 sq. ft (11'x18')
- 12 lecture seats, 8 classroom seats
- Rooms 105, 106, 107: 925 sq. ft. per room (25'x37') 80 lecture seats per room, 65 classroom seats per room, 40 banquet seats per room
- Room 108: 2,775 sq. ft. (37' x75') 244 lecture seats, 180 classroom seats, 120 banquet seats





FAIRVIEW ROOM

The Fairview Room offers scenic views of the Georgia National Fairgrounds & Agricenter while providing a great location for smaller events. This room is located on the second floor of Reaves Arena.



Features

- Climate-controlled
- Fantastic views of lakes and West Gate area
- Overlooks Reaves Arena with audio of arena events available
- Carpeted floors
- Adjacent to kitchen
- Restrooms



Capacities

- 1,716 sq. ft.
- 33' x 52' floor space
- 120 lecture seats
- 96 banquet seats

(Overlooks Reaves Arena)

(View of lakes and West Gate area)

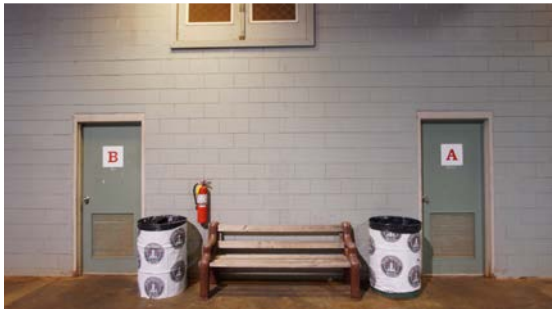


LIVESTOCK BARNs & ARENAS



REAVES ARENA

Reaves Arena is the venue in Middle Georgia for all types of events. From horse shows and rodeos to concerts and rallies, Reaves Arena can be transformed into your showplace.



Usage

- Concerts
- Rodeos
- Trade shows
- Equine Events
- Livestock shows
- Sporting events
- Banquets
- Meetings
- Dog shows



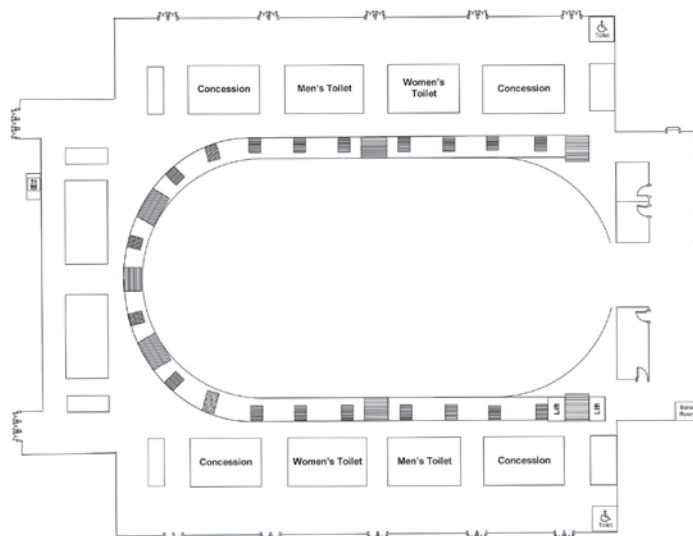
Features

- Climate- controlled atmosphere
- Concrete floor; can utilize dirt
- 4 concession stands (2 on each concourse)
- Ceiling height 63'
- Dressing rooms
- Portable stage available
- 4 Super Trouper Spotlights
- Two 12'x24' and One 24'x14' roll-up doors for easy loading & unloading
- Floor ties for circus performances
- 250'x125' show-ring
- Paging system between Reaves Arena and all other arenas and barns
- Restrooms
- Covered walkways to Covered Horse Arena and Barn and to Beef & Dairy Arena and Barn



Capacities

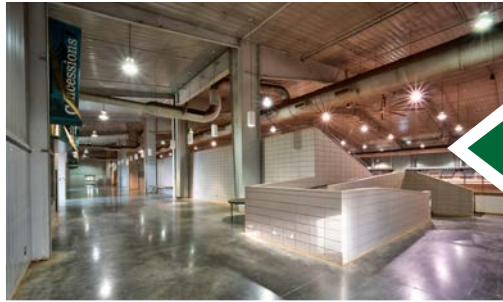
- 92,400 square feet total
- 8,200 seats (4,444 permanent; 558 box; 3,248 folding)
- 2,000 banquet seats
- 170 (10'x10') trade show booths
- 40 vendor booths (8'x10') in concourse and lobby





SUTHERLAND LIVESTOCK & EQUINE ARENA

Sutherland Livestock & Equine Arena would be the perfect facility for your horse and/or livestock event. Utilized alone or in combination with several adjoining facilities, this highly flexible venue provides a variety of possibilities for shows of all sizes.



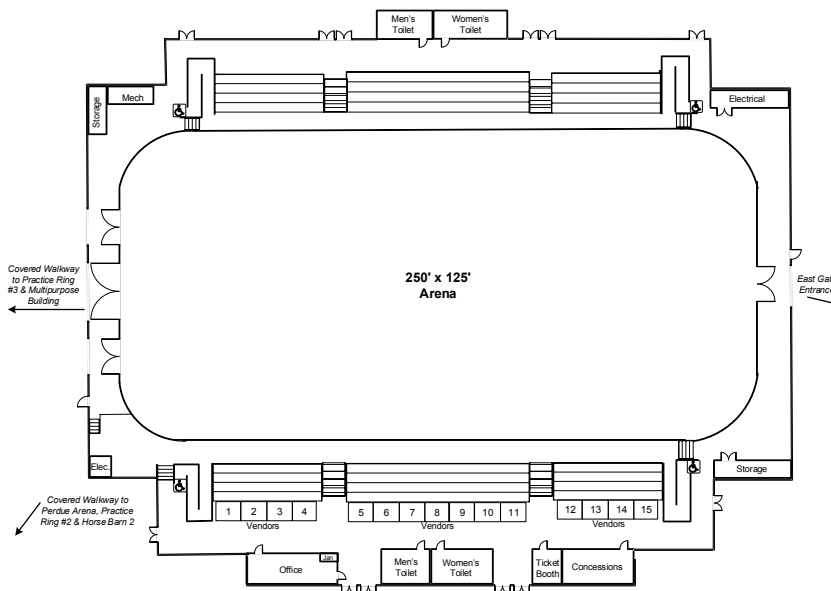
Features

- Climate-controlled atmosphere
- Show office
- Permanent video tower
- Indoor restrooms
- Paging system
- 4 Roll-up doors for loading and unloading
- Ticket Booth
- Concession stand
- Large ceiling fans for improved air circulation
- Connected to Practice Ring #2 and #3, Horse Barn #2, and Multipurpose Livestock Building by covered walkways



Capacities

- 59,157 sq. ft.
- 250' x 125' show ring
- 874 Stadium Seats





PERDUE ARENA

The Perdue Arena is the perfect facility for your horse and/or livestock event. Utilized alone or in combination with several adjoining facilities, this highly flexible venue provides a variety of possibilities for shows of all sizes.



Usage

- Horse shows
- Livestock shows
- Educational clinics or seminars involving livestock or horses



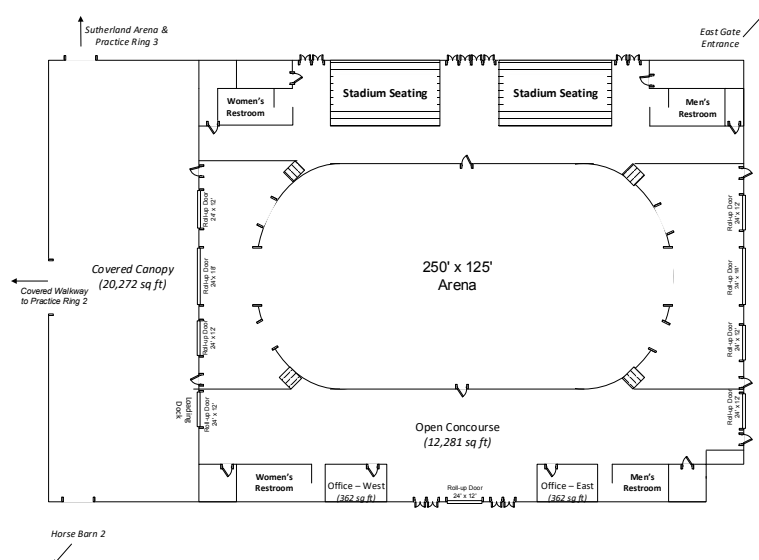
Features

- Climate-controlled atmosphere
- 2 Show offices (362 square feet)
- Restrooms
- Paging system
- Vendor spaces with electrical outlets
- 9 Roll-up doors for loading and unloading
- Wireless internet
- Connected to Practice Ring #2 and Horse Barn #2 by covered walkways



Capacities

- 59,824 building square feet
- 250'x125' show pen with dirt floor on top of clay base
- 486 Stadium Seats
- 12,281 square foot flat open concourse
- 53 10'x10' vendor booth spots
- 20,272 square foot attached canopy





FOSTER RHODES BEEF & DAIRY ARENA

The Foster Rhodes Beef & Dairy Arena was designed to meet the special needs of beef and dairy cattle owners and exhibitors. It has also been utilized for a variety of other events including horse auctions, llama shows, and educational seminars.



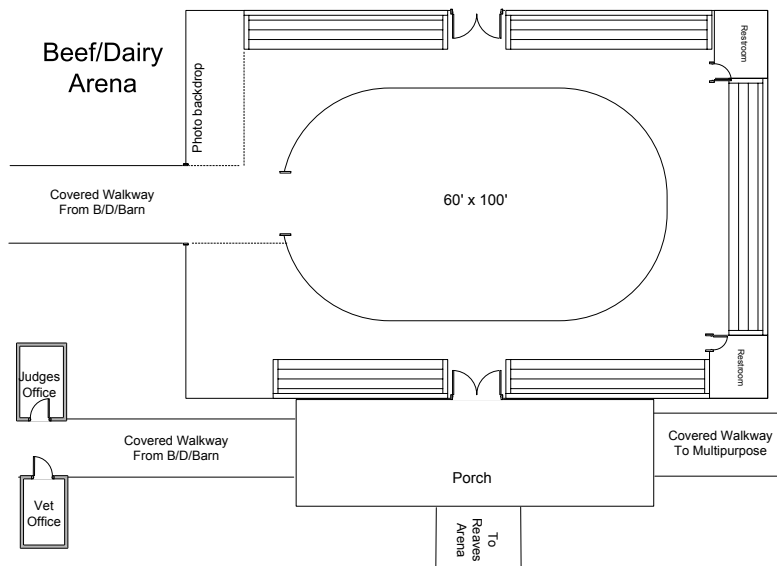
Usage

- Beef & dairy shows and/or sales
- Horse auctions and/or sales
- Demonstrations or classes
- Llama shows



Features

- Climate-controlled atmosphere
- Restrooms
- Large roll-up door (12'x24') for easy loading and unloading
- Covered walkways to Reeves Arena, Beef & Dairy Barn, Multipurpose Livestock Building
- Clay floor show ring covered with shavings
- Wireless internet
- Vendor space available with electricity



Capacities

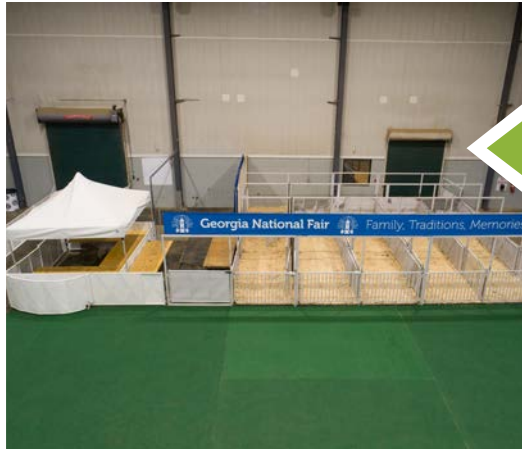
- 16,402 square feet
- 347 stadium seats
- 60' x 100' show ring





NEW SOUTH ARENA

New South Arena is extremely versatile for smaller events. Its flexibility allows it to be a suitable venue for various types of livestock and animal shows, as well as other types of events.



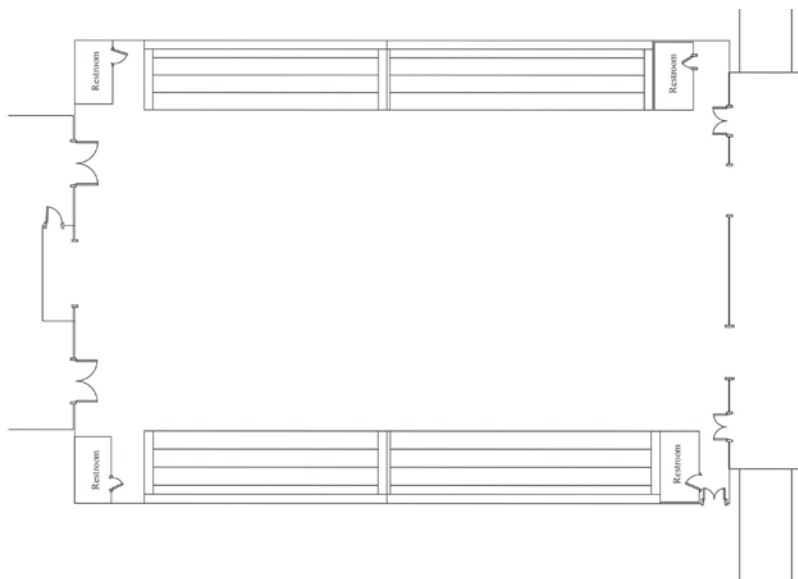
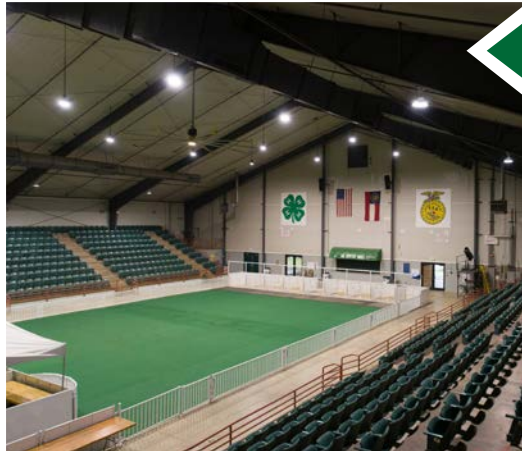
Features

- Climate controlled
- Concrete floor
- Concession stand
- Indoor restrooms
- 2 roll-up doors (12' x 24')



Capacities

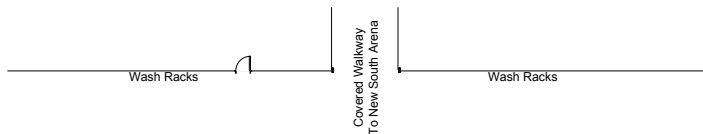
- 24,764 sq. ft.
- 66' x 120' open floor space
- 1,646 total seats (976 stadium; 700 floor)
- 41 trade show booths (10' x 10')





SHEEP & SWINE #1

Sheep & Swine Barn #1 is one of two barns connected to the New South Arena via covered walkway. Used primarily to house animals participating in shows in New South, it can also be used as a stand-alone show or sale facility. This barn can also serve as an overflow horse barn with a capacity for 168 vinyl portable horse stalls



Usage

- Swine, sheep, and goat sales and shows
- Stalling building for horse shows and sales



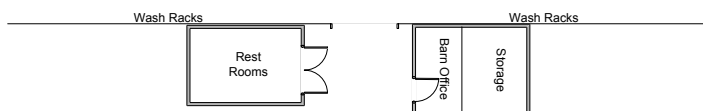
Features

- Ample electrical outlets
- 4 indoor wash racks with 10 washing pens each
- Concrete floor
- Paging system between arena and barn
- Sound system in building
- Truck loading chute
- Office for show officials and judges
- Restrooms with showers and hot water
- LED display boards
- Wireless internet



Capacities

- 36,320 square feet
- 120' x 255' floor space
- 480 galvanized metal pens (6' x 6')
- 168 portable vinyl horse stalls (10' x 10')





SHEEP & SWINE #2

Sheep & Swine Barn #2 is one of two barns connected to the New South Arena via covered walkway. Used primarily to house animals participating in shows in New South, it can also be used as a stand-alone show or sale facility. This barn can also serve as an overflow horse barn with a capacity for 130 vinyl portable horse stalls.



Usage

- Swine, sheep, and goat sales and shows
- Stalling building for horse shows and sales



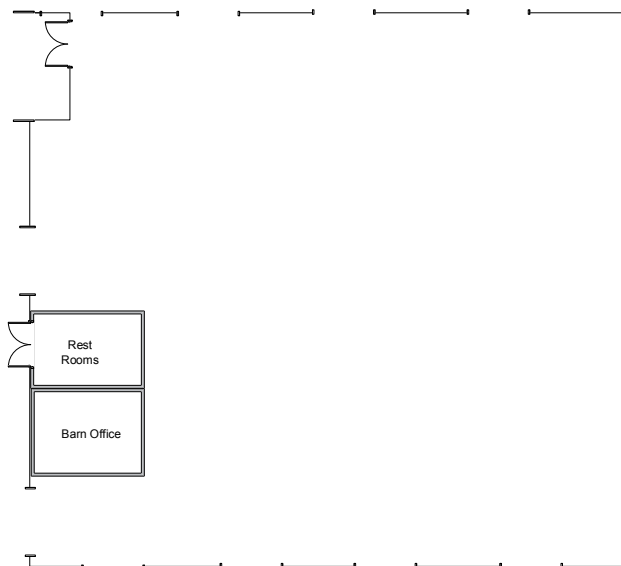
Features

- Ample electrical outlets
- 4 indoor wash racks
- Concrete floor
- Paging system between arena and barn
- Sound system in building
- Office for show officials and judges
- Restrooms with showers and hot water
- Enclosed with 12' and 14' roll-up doors for loading and unloading
- LED display boards
- Wireless internet
- Sale ring set-up available



Capacities

- 32,000 square feet
- 175' x 180' floor space
- 374 galvanized metal pens (6' x 6')
- 130 portable vinyl horse stalls (10' x 10')





BEEF & DAIRY BARN

The Beef & Dairy Barn is designed with permanent wood cattle tie panels to meet the needs of beef and dairy cattle owners and exhibitors. A cattle tie out area is a short walk from the barn. Dairy farmers will appreciate the convenience of the milking parlor located adjacent to the barn. The Beef & Dairy Barn is often utilized for horse housing with space for 352 portable vinyl stalls.



Usage

- Beef & dairy cattle sales
- Housing beef & dairy cattle shows
- Housing for horse shows or sales
- Housing for llama shows



Features

- Vendor space available with electricity
- Ample electric outlets
- 2 covered wash racks; handle 37 head each
- Concrete floor
- Offices for show officials & judges
- Restrooms with showers & hot water
- Large ceiling fans for improved air circulation
- LED display board
- Cattle tie out area for 1,218 head with water supply
- Wireless internet
- Connected to Foster Rhodes Beef & Dairy Arena, Multipurpose Livestock Building, Reaves Arena, & Sutherland Arena by covered walkways



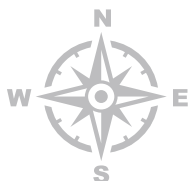
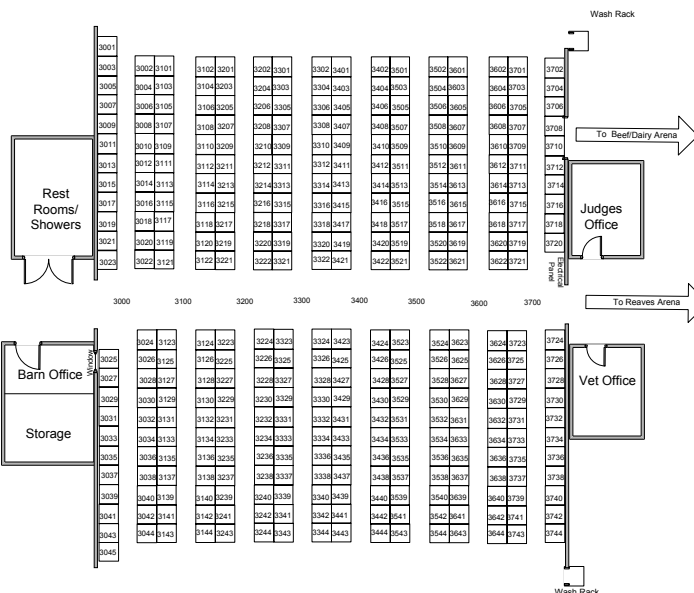
Capacities

- 73,725 square feet
- 840 cattle ties
- 176 cattle pens (10'x10')
- 352 horse stalls (10'x10')



Milking Parlor

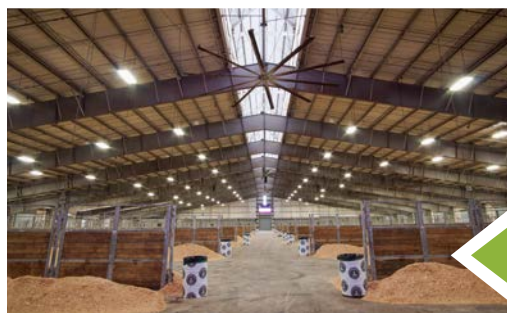
- 8 milking stations
- 2,000-gallon tank
- Flush system
- Viewing windows & exhibition room
- 4,200 square feet





MULTIPURPOSE BUILDING

The Multipurpose Building is a large and versatile structure which can accommodate a variety of events from livestock/horse events to commercial rentals.



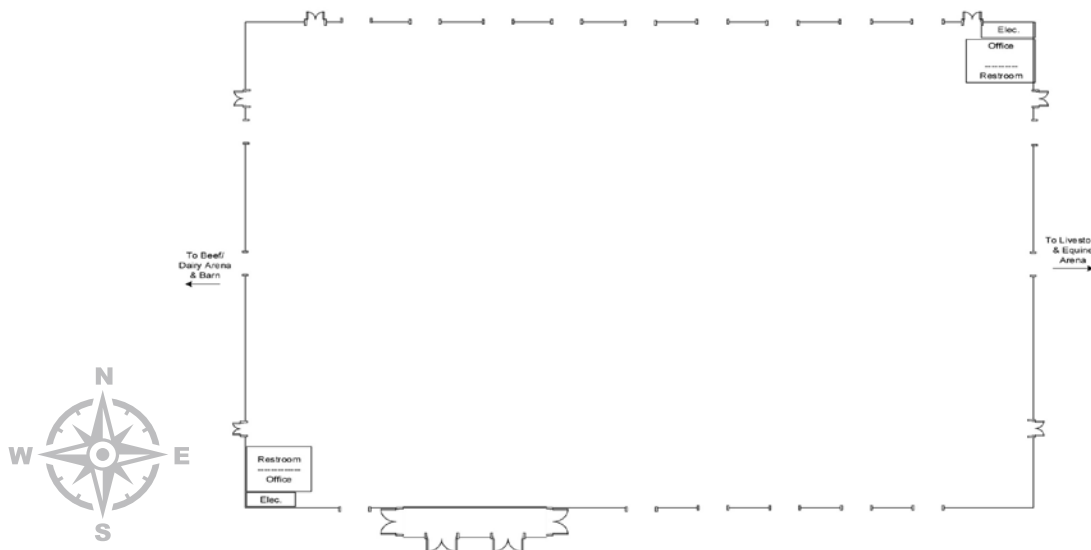
Features

- Multiple configurations for show-rings and stalls
- Concrete floor (dirt may be utilized)
- Paging system
- Located near Rocker's Roost Restaurant
- Rest rooms with shower facilities in show office
- Wash racks
- Show office
- Ample electrical outlets
- Enclosed with 12' and 14' roll-up doors
- Connected to Foster Rhodes Beef & Dairy Arena and Reaves Arena by covered walk ways.



Capacities

- 87,045 sq. ft.
- 256' x 330' open floor space
- Up to 408 portable horse stalls (10' x 10')
- 1,020 cattle tie spaces
- Up to 374 trade show booths (10' x 10')





HORSE BARN #1

Horse Barn #1 is one of two permanent horse housing facilities at the Georgia National Fairgrounds & Agricenter. This recently renovated barn houses 480 horses in 10'x10' box stalls with concrete floors.



Usage

- Stalling for Equine events



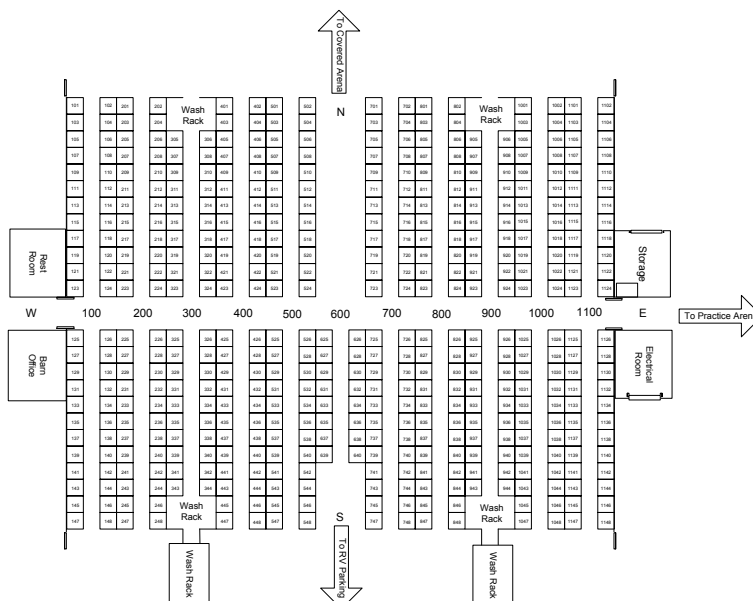
Features

- Stalls of hot-dipped, galvanized metal and #1 Georgia pine
- 4 indoor wash racks with 6 spaces each
- 2 outdoor wash racks with 22 spaces each
- Restrooms with showers and hot water
- Adjacent to RV park
- Covered farrier station
- Electrical outlets with each stall
- Easy access to water in barn
- Office for show officials and judges
- Large ceiling fans for improved air circulation
- Adjacent to open exercise ring, Covered Horse Arena, and Reeves Arena



Capacities

- 97,750 square feet
- 480 stalls (10'x10')





A wide-angle photograph of a large, modern stable interior. The stalls are constructed from light-colored wood and metal bars, arranged in long rows. The ceiling is high with a corrugated metal roof and several large, round, pendant lights hanging from it. The floor is a smooth, light-colored concrete. The perspective is from the end of the aisle, looking down the length of the stable.



- Stalling for horse shows
- Stalling for livestock events



- Stalls of hot-dipped, galvanized metal and #1 Georgia pine
- 2 indoor wash racks
- Restrooms with showers and hot water
- Adjacent to RV park
- Easy access to water in barn
- 2 covered farrier stations
- Concrete floors
- Large ceiling fans for improved air circulation



- 103,000 square feet
- 480 stalls (10'x10')



PRACTICE RING #2

Practice Ring #2 is a dirt floor, covered arena with a concrete apron. This arena is routinely used as a warm-up arena for horse shows.



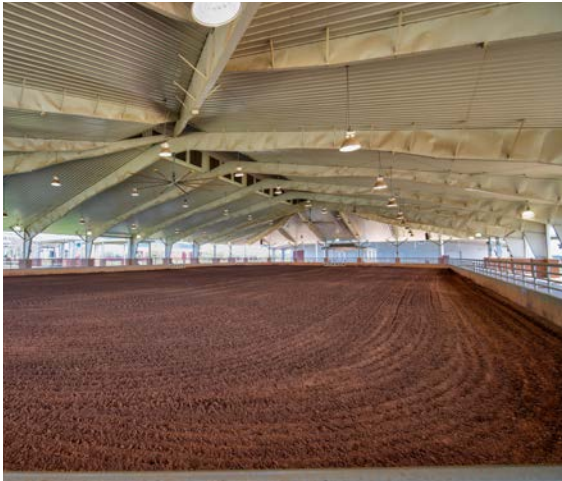
Usage

- Warm-up arena for horse shows



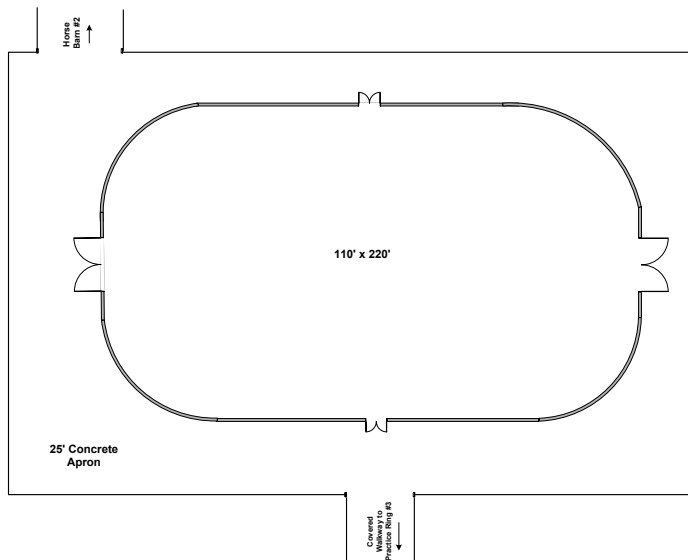
Features

- Covered/insulated roof
- Dirt arena floor
- Concrete apron surrounding dirt ring
- Large ceiling fans for improved air circulation
- Connected to Horse Barn #2, Practice Ring #3, and Sutherland Arena by covered walkways
- Bleacher seating available upon request



Capacities

- 39,000 square feet
- 110'x220' dirt floor





PRACTICE RING #3

Practice Ring #3 adjoins the Sutherland Livestock & Equine Arena. The dirt arena surrounded by a concrete apron, has room for bleacher seating and vendor parking. It is also routinely used as a warm-up arena for horse shows and a staging area for cattle shows.



Usage

- Warm-up arena for horse shows
- Covered cattle holding area for horse shows using cattle
- Weigh-in and staging area for cattle shows
- Educational clinics and seminars involving animals



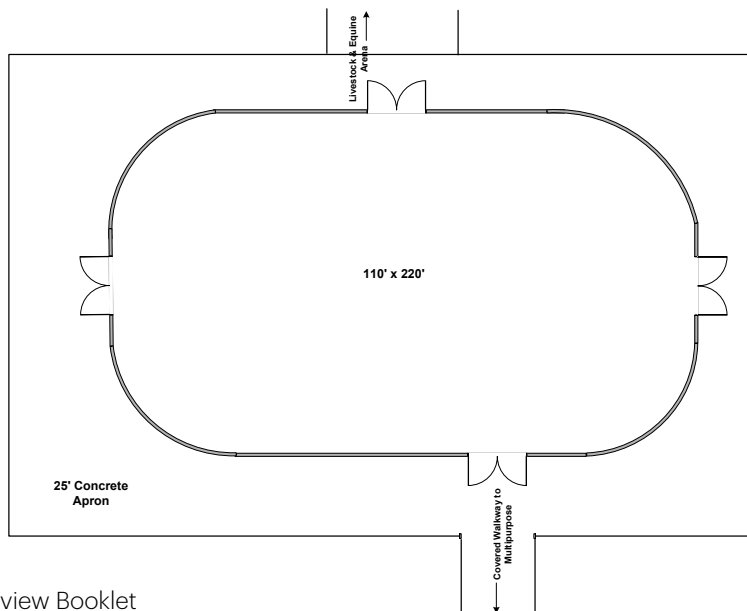
Features

- Concrete apron surrounding dirt ring
- Large ceiling fans for improved air circulation
- Covered walkways to adjoining facilities
- Vendor spaces
- Sound system
- Bleacher seating available upon request
- Connected to Practice Ring #2 and Sutherland Arena by covered walkway
- Adjacent to Corral Building
- Flanked by small round pen and large lunging pen



Capacities

- 44,000 square feet
- Dirt 110'x220' arena





CORRAL BUILDING

The Corral Building is a convenient location to house your show or stalling personnel. Located along the entrance road from the East Livestock Gate it allows your staff easy access to exhibitors as they arrive for your event. The Corral is also a great location for small meetings.



Usage

- Show Staff Office Space
- Stalling Staff Office Space
- Conference Room



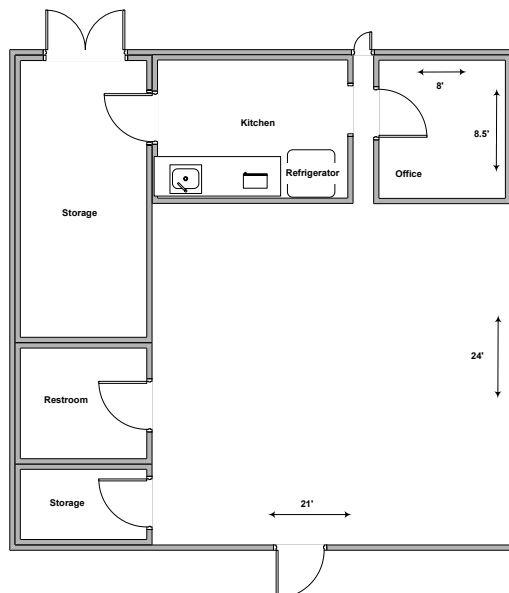
Features

- Climate-controlled atmosphere
- Restroom
- Open office/meeting space
- Kitchen Area
- Small private office space
- Locking storage space
- Wired internet



Capacities

- 21'x24' meeting space



ONSITE ACCOMMODATIONS & HOTELS



Onsite



Campgrounds

The Georgia National Fairgrounds & Agricenter offers the unique advantage of staying onsite during your event. The Fairgrounds boasts 1,025 RV sites complete with water and electrical. 521 sites include sewer hook-ups as well. The Georgia National Fairgrounds even offers a custom online booking site, so your guests can book their upcoming visit with ease. With 1,100 acres, the Georgia National Fairgrounds has the capacity to host events and groups of almost any scale.

www.gnfa.com



Area Hotels

Looking for a place to stay close by? There are 1,400 hotel rooms located within 2-miles of the Georgia National Fairgrounds & Agricenter. Located just 3 exits away, Warner Robins offers an array of activities, shopping, and eateries and has over 2,200 hotel rooms and 240 short-term home rentals.



Onsite - Coming Soon!



Marriott Hotel

Coming Soon! Plans for a dual-brand Marriott hotel, with a Fairfield by Marriott hotel flag and a TownePlace Suites by Marriott hotel flag are coming soon! The hotel, which is set to begin construction in 2024, will include over 120 rooms and be connected to the Fairgrounds' largest indoor convention space, the Miller Murphy Howard Building!



FROM *Fair Favorites* TO *Downtown Dining*

there are plenty of flavors to discover in Perry! Historic Downtown Perry offers a diverse array of restaurants and nightlife! From traditional Southern fare to international cuisine, there is something for everyone to enjoy. Whether you are looking for a casual brunch spot with friends, a romantic dinner destination, or a quick bite on the go, our Perry restaurants have you covered.



Reel FUN

With our mild climate, fishing and boating enthusiasts will love the beautiful landscape and scenic views of Houston Lake, where you can cast your line or take a leisurely boat ride. The Go Fish Education Center is a fascinating and informative experience for visitors of all ages.



Connect WITH CULTURE

Boasting one of the largest International Festivals in the Southeast, as well as an annual Juneteenth Freedom Day Festival and the Georgia National Fair's Concerito De Musica Latino, we invite you to discover the diversity that proudly makes Perry the community "Where Georgia comes together"!



Memorable MOMENTS

Perry is home to year-round events, from free festivals hosted in the heart of Historic Downtown Perry to the Georgia National Fair! Our events bring Georgia together and showcase the unique culture and spirit of our city. Come experience the warmth and hospitality of our wonderful city during one of our many special events!



Ride ON

Perry's parks and green spaces are the perfect destination for year-round outdoor fun! Take a ride on the Weeetka or bird watch from the boardwalk on the White Tail Trail. Cool off at the Creekwood Park Splash Pad or enjoy a pickup game of frisbee golf followed by a picnic at Rozar Park.



SHOP Local

Historic Downtown Perry is conveniently located 1 mile from Exit 136 on I-75 and only 1.5 miles from the Georgia National Fairgrounds and Agricenter! Take a stroll through Historic Downtown Perry, where you can admire the beautiful architecture while browsing unique local boutiques.



Nestled in the heart of Georgia, Perry is conveniently located off of I-75, only 30 minutes south of Macon and 90 minutes south of Atlanta. Find a comprehensive listing of local restaurants, retailers, attractions and more at visitperry.com!

VISIT
PERRY!
GEORGIA

(478) 988-8000

@visitperry

STATE ATTRACTIONS

EXPLORE
GEORGIA®

From the **Appalachian peaks** to the salty **Atlantic beaches** and all the southern specialties in between, Georgia truly does offer something for everyone. Georgia's moderate year-round climate means any time of year is perfect for a visit! Our summers are warm, our falls brisk and sunny, our winters mild, and our springs are blooming with **Cherry Blossoms**, **Dogwoods**, and **Azaleas**.

Conveniently located in the center of the state right off I-75, **The Georgia National Fairgrounds** makes every Georgia destination accessible. **Perry** is our home, but we encourage guests to roam the historic streets of **Savannah**, the river rapids in **Columbus**, the **Blue Ridge** hiking trails, and so much more!



Make the most of your trip to Georgia!
Scan the QR code to learn more about
everything Georgia has to offer!



AREA ATTRACTIONS

You won't need to travel far to visit some of Georgia's finest museums, restaurants, parks, and activities. **Warner Robins** is located just 10 miles North of the Fairgrounds and offers local favorites such as the **Museum of Aviation** and **Rigby's Water World**.

Macon is located just 30 miles north of the Fairgrounds and boasts a wide array of shopping, dining, and exhibits. Known by many as the birthplace of **Southern Rock**, visitors can explore **Capricorn studios** where bands including the **Allman Brothers**, **Charlie Daniels**, **Marshall Tucker**, and others recorded.



SCAN THE QR TO LEARN ABOUT
MORE AREA ATTRACTIONS!

find it

01 Farms

Lane Southern Orchards



02 Rock Climbing

Macon Rocks



03 Dining

The Rookery



04 Water Park

Rigby's Water World





Georgia National Fairgrounds & Agricenter

401 Larry Walker Parkway • Perry, Georgia 31069

P: 478.987.3247 • www.gnfa.com • www.georgianationalfair.com