

2023

Greeley STAMPED

★ REPORT TO THE COMMUNITY ★

Providing information about the events economic impact, donations and park improvements to fulfill our mission of strengthening our community

For the 2022 event, the Greeley Stampede hired the International Festival & Events Association (IFEA) to conduct an economic impact study which was completed by JS&A Economic Development Consulting. This is the first official study completed in over 20 years to determine the impact the Greeley Stampede has on the economy of Greeley. Below are highlights from the report detailing guest spending and habits.



\$6 Million
Local restaurants and bars



\$1.2 Million
Lodging and other misc items



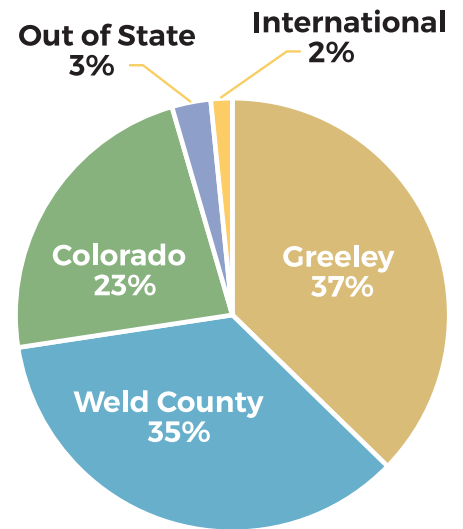
\$4 Million
Shopping and merchandise



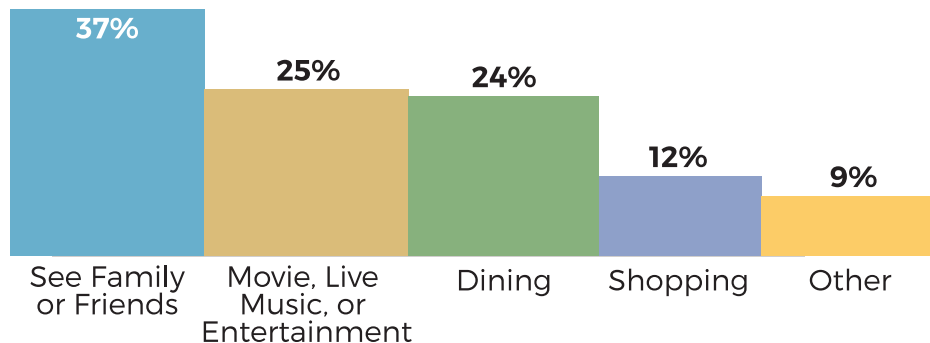
253,000
Guests at the 2022 Stampede

Visitor Profile

Greeley Stampede has a high level of year-to-year visitor retention. Attendees who had previously attended a Greeley Stampede have been to an average 13 Greeley Stampedes prior to 2022. 28% of attendees live outside Weld County, typically from other areas of Colorado. 37% of attendees live within the City of Greeley.



Other Activities Visitors Planned On Doing While In Greeley For The Event



Over 25% of attendees live outside of Weld County. The vast majority of event attendees live in Colorado.

Note: Customer origin and spending pattern data figures are taken from a survey of 2022 Greeley Stampede attendees. Analysis completed for Greeley Stampede by Jon Stover & Associates.

Donations

The Greeley Stampede is a community effort relying on organizations to help make the event a success each year. For volunteering at the event, the Greeley Stampede makes a donation to the organization to support their mission and goals. In 2022 alone, the Stampede donated over \$94,000 to organizations across Weld County and over \$550,000 the last six years.

BOYS & GIRLS CLUB
 CELEBRATION POINTE CHURCH
 CLUB SOCCER
 EXCHANGE CLUB
 FRONTIER ACADEMY
 FRONTIER ACADEMY VOLLEYBALL
 GREELEY CHURCH OF CHRIST
 GREELEY WEST ATHLETICS
 GREELEY WEST POMS
 GRIZZLY BOOSTER CLUB



LEANNA'S CLOSET
 LIVING GRACE BAPTIST
 LOVELAND VOLLEYBALL
 NORTHERN COLORADO WRESTLING
 RAPIDS FC
 ROOSEVELT HIGH SCHOOL
 UNIVERSITY POMS
 WELD COUNTY SHERIFFS POSSE
 WELD COUNTY 4-H



Along with supporting local organizations, the Stampede is a strong supporter of breast cancer awareness. Each year, along with the Ranack Cares Foundation (RCF), the Stampede donates to the NCMC Foundation Mammography Fund. The donation is supported through ticket sales at the Tough Enough to Wear Pink (TETWP) rodeo and merchandise along with the RCF golf tournament and clay shooting contest. Together, we donated \$26,000 to the Mammography Fund in 2022.

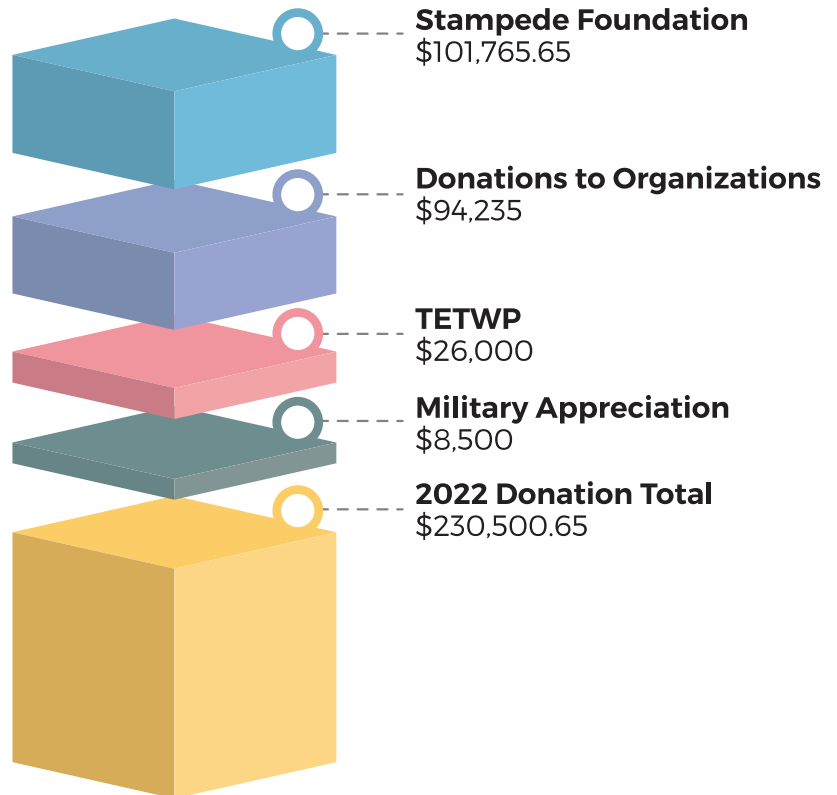
The Greeley Stampede also supports veterans through our Military Appreciation Night. A portion of ticket sales that day as well as proceeds from specialty merchandise goes towards the High Plains Honor Flight.

Foundation

The Greeley Stampede Foundation is a non-profit organization formed in 2006 to support continuing education for Weld County students. Since beginning the program, the Stampede Foundation has awarded more than \$665,000 in scholarships to over 640 Northern Colorado students.

In 2022, our friends at JBS matched our scholarship funds for an additional \$50,000 in scholarships

The Greeley Stampede produces three annual events to raise funds for the Stampede Foundation: golf tournament, Western Art Show & Opening Night Gala and the Big Buckle Ball.



WHERE CHAMPIONS MEET

\$120,000

First major park improvement creating the iconic appearance of the arena



1995

WEST GRANDSTANDS

\$3.5 million



1997

Marking the 75th anniversary of the Stampede, the statue is now a main feature of the park appearance

2016

BUCKLE CLUB

\$852,000



SECOND ARENA RAMP

\$172,899

Created a new meeting space with updated restrooms and vending area



2019

Improved entrance into the arena making it more accessible

The permanent stage and updated skyboxes make the arena a destination for events

2022

JBS STAGE & SKYBOX UPDATES

\$3.6 million



To support our mission of strengthening our community, each year the Greeley Stampede makes improvements to the city owned Island Grove Park. These improvements can be as basic as painting handrails or replacing roofs to being extravagant like building the new permanent JBS Stage in the arena. As the primary renters of the park, the Greeley Stampede not only makes these improvements for the benefit of the event, but for anyone that will be utilizing the park. All assets, including the new JBS Stage, become city property upon completion of the project. The Stampede cannot do all of these improvements on our own. We rely on community support and partners to help make them possible. Since 1992, the Stampede has invested over \$11.2 million into park improvements and has plans for future projects to continue to make the park and Greeley the premier destination.



BECOME A VOLUNTEER!

Help put on Northern Colorado's premier western celebration by becoming a volunteer. For more information, e-mail Jesse Leos at volunteers@greeleystampede.org

GREELEYSTAMPEDE.ORG 970-356-7787
A 501c4 organization

MISSION:

To Celebrate Our Nation's Independence,
Preserve Our Western Tradition,
and Strengthen Our Community.

GOLD - \$5,000

5280 STONE COMPANY
 5TH STREET ELEVATOR
 AMERICAN IMAGINING MERCHANTS
 ANCON II CONSTRUCTORS
 ANDREW WHITE
 ATLAS ENERGY SERVICES
 BIZWEST
 BOB'S ELECTRIC
 BRANDON MURDOCK
 BRATTON'S OFFICE EQUIPMENT
 COUNTRYSIDE LARGE ANIMAL VET SERVICE
 CRUMBL COOKIES GREELEY
 DENNIS MORHLANG
 DENVER & FRONT RANGE WEATHER
 DOUBLE J MEAT PACKING
 GREELEY EVANS SCHOOL DISTRICT 6
 GREELEY LIFESTYLE
 GUSHER OIL FIELD SERVICES
 HILLSIDE RENTAL
 HOMEWOOD SUITES
 HUGO'S INC
 HUNGENBERG PRODUCE
 J&M DISPLAYS, INC
 JD'S COLLISION REPAIR
 JEFF BEDINGFIELD
 JUNE'S TEAM/KELLER WILLIAMS
 REALTY PARTNERS
 K&K LASER
 KENNY'S STEAK HOUSE
 KINGS TRUCKING
 KM CONCRETE CONTRUCTION
 KRAN LLC
 LESLIE LANGE PERFORMANCE HORSES
 MILLER CATTLE FEEDERS
 MINERAL RESOURCES INC
 NOCO PARTY BUS
 PELLIGRINI CUCINA ITALIANA
 POWER EQUIPMENT COMPANY
 PRODUCERS LIVESTOCK
 RAISLEY ELECTRIC
 RAY KINTER
 RICHMARK
 ROB'S REPAIR
 SAGE TELECOMMUNICATIONS
 SG FARMS
 SUNSTATE EQUIPMENT
 TEAM PETROLEUM
 THE HUMAN BEAN
 TIMBERWOOLFE, LLC
 TRIPLE S PARTY RENTAL
 TURQUOISE AND TANGERINE
 BOUTIQUE
 UFP INDUSTRIES
 UNI DESIGN
 VALLEY FIRE EXTINGUISHER, INC
 VANDER WAL SERVICE

SILVER - \$2,500

ADVANCED MECHANICAL SERVICES LLC
 ALL PURPOSE RENTAL & SALES

ARCTIC GLACIER
 ASPIRE SOLUTIONS
 AULT RENTAL
 AUNT HELEN'S COFFEE HOUSE
 BANK OF COLORADO INVESTMENT SERVICES
 BEE CLEAN AUTO WASH
 BELLA HOLSTEINS LLC
 BEST WESTERN HOTEL
 BILL HALL REALTY
 BILL'S VOLUME SALES & SERVICE
 BONNELL FENCING
 BRIAN AND ERICA MARTINEZ
 BROWN EARTH COMPANY LLC
 BT DERBY
 BUILDERS FIRST SOURCE
 CAN DO CONCRETE CONSTRUCTION, INC
 CANDLEWOOD SUITES
 CHOCOLATE COVERED TRUCKING
 CINCH
 COMFORT INN AND SUITES
 COTTONWOOD FLORIST
 COVENANT TESTINGTECHNOLOGIES, LLC
 DCJ CORP
 DEAN CHARITABLE FOUNDATION
 DISCOUNT TIRE & SERVICE
 DOUBLE TREE BY HILTON
 DURACLEAN SERVICES
 EILEEN'S COLOSSAL COOKIES
 ELIDA MARTINEZ
 FORD FARMS
 FRANCIS ROYALTIES LLC
 GEORGIA BOYS COMMERCIAL SERVICES
 GET R DONE LANDSCAPING
 GRACEFULLY ETCHED PHOTOGRAPHY
 GREELEY WINSUPPY CO
 HAI SERVICES
 HAMPTON INN AND SUITES
 HILL PETROLEUM
 HINZE FAMILY
 HITS 106.COM
 HOMERUNS AND NOCO LIVING WITH SHANTE
 MICHEAL
 HUSTON GRAPHICS & PRINTING
 J A TIMMERMAN CATTLE
 JASON SUNTYCH PHOTOGRAPHY
 JAY AND ANGELA SALBERG
 JBS CARRIERS
 KH ELECTRIC
 KINDVALL RANCH
 KR SWERDFEGER CONSTRUCTION LLC
 KT PLUMBING AND HEATING
 LANCE ROTH
 LC CONTRACTING
 LIT'L BIT BAR & GRILL
 M&M EXCAVATION CO
 M&M FARMS
 MANE STREET MEDIA
 MANY MACARONS
 MARTIN MARIETTA
 MELISSA MCDONALD
 & ISAAC WILLIAMS - STATE FARM
 MIKE & JULIE LORDEMAN

2022 DONORS

MINUTEMAN PRESS
MOUNTAIN CONSTRUCTORS
NAI AFFINITY
NEWCO INC
NOFFSINGER MFG CO INC
PETERSEN CONSTRUCTION
PHANTOM LAKE RANCH
PHELPS-TOINTON
POWER TO BUILD REAL ESTATE
PRECISION WELDING & DESIGN
PURINA ANIMAL NUTRITION
QUALITY CONSTRUCTORS
RANDY OWENS PHOTOGRAPHY
RAY RIVAS REALTOR AT SORA REALTY GROUP
RC AUTO DETAIL
RE/MAX ALLIANCE - TEAM BENGFORD
RF ANGUS
RHONDA DONAHUE
ROOF CHECK INC
ROTH FARMS
ROUSE REALTY - NITZEL TEAM
S2 GENERAL CONTRACTING
SAGERTS ALL PRO STUCCO
SANGER FAMILY
SANTIAGO'S MEXICAN RESTAURANT
SCHEELS ALL SPORTS
SECURITY & SOUND DESIGN
SHUMAN LAND AND CATTLE
SKIPS CARPET SERVICE
STICED IN STONES CUSTOM LOGO APPAREL
SUSAN MILLER
TATYANA 5 STAR DRY CLEANERS
THE FARR FAMILY
TIM HAUFF
TWIN EAGLE SAND LOGISTICS
W3 CREATIVE SOLUTIONS
WELD COUNTY SHERIFF'S POSSEE

BRONZE - \$1,000

NICOLE WATKINS
ALLNUTT FUNERAL SERVICE
ATC TOWING
BARNWOOD EVENTS
BERT'S TOWING
BLANE & BRENDA LANCASTER
BRAD EDGREN, DR
BUBBLES
BUCKEYE CLEANING CENTER
& NILFISK EQUIPMENT
CARRIE BAUER
CENTENNIAL CUTS
CHAMPION ROOFING
CINTAS CORPORATION
COUNTRYSIDE SIGN & DESIGN
CULVER'S
DELUXE LAUNDRY SERVICE
EMPIRE STATE PIZZA
EPIC EGG RESTAURANT
GCR TIRES AND SERVICE
GEORGE & BETTY HALL
GOURMET GRUB SCRATCH KITCHEN
GROVES MASONRY

HAROLD AND CAROL EVANS
HERMAN FAMILY
J-9 INSURANCE AGENCY
JACK IKENOUE
JEROD & AMY CARROLL
JIM'S WINGS INC
JOHN SOSNA REALTOR UNITED COUNTRY
JORDAN FAMILY
KODER KNOWS REAL ESTATE
MALLETT INSURANCE
MARY BOHLENDER
MASON'S EVENT CENTER
MERRY MAKERS LLC
ON TIME TOWING
RADIOLOGY IMAGING ASSOC
RAPID ENERGY SOLUTIONS
ROCKY MOUNTAIN PUBLISHING
RYAN PRALL
SCHNEIDER WERX
SHAWN'S CARPET CARE
SHERWIN WILLIAMS
SORENSEN ROOFING
SPENSER MATHIS
STAN AND BARBARA BOUSE
STOCKMAN'S CAFÉ
STODDARD FUNERAL HOME &
SUNSET MEMORIAL
SUNSHINE EMBROIDERY
TAMMY PATCH
TEAM GRIZZELL-REALTY ONE
THE MAD COW
TROY SHEETS
WERNSMAN ENGINEERING

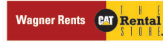


Be a part of the Greeley Stampede community celebration!

Join the more than 275 community organizations and individuals to support Colorado's premier western celebration through the donation of monetary funds and/or in-kind goods and services.

Learn more and join by emailing Julie Reinert at julie@greeleystampede.org

2022 SPONSORS





JULIE JENSEN

GENERAL CHAIRMAN

The Greeley Stampede is an event to celebrate our independence and preserve our western heritage. The Stampede has one more part to our mission, to strengthen our community. We do that by supporting Weld County organizations financially, donating our time, and providing our resources throughout the year. Our community is truly the reason that we have the Greeley Stampede and, as a committee, volunteer our own time to organize the event to make it something special that we can all be proud of. The event is a chance to reconnect with friends and family while making memories that will last a lifetime.

Although we do everything we can to give back to the community, it is the community that makes the Greeley Stampede possible. Without our volunteers, donors, and sponsors, the Stampede wouldn't happen.

We may be an event to strengthen the community, but that is only made possible because of the strength that the community gives us. From everyone at the Stampede, we want to say "Thank You" to all that have donated your time or funds to help make this community event possible.

As you will see in this document, our efforts are working as we bring in a significant economic impact to the area as well as donate over \$230,000 back into the community. Currently, we are hard at work getting ready for the 2023 Stampede held June 22-July 4 so we can continue our mission and, with your help, keep giving back to our community.



Jesse Leos
Volunteer
Chairman



Jacki Reider
Hospitality
Chairman



Mic Harvey
Security
Chairman



Shawn Mills
Rodeo
Chairman



Todd Stephens
Parking
Chairman



Jen Baiamonte
Group Parties
Chairman



Junior Barrios
Admissions
Chairman



Jerod Lichtenberg
Grounds
Chairman



Cory Sample
Music Production
Chairman



Stephen Walker
Parades
Chairman



If you are interested in becoming part of the Stampede family or have questions about serving on the committee, please contact Jesse Leos at volunteers@greeleystampede.org