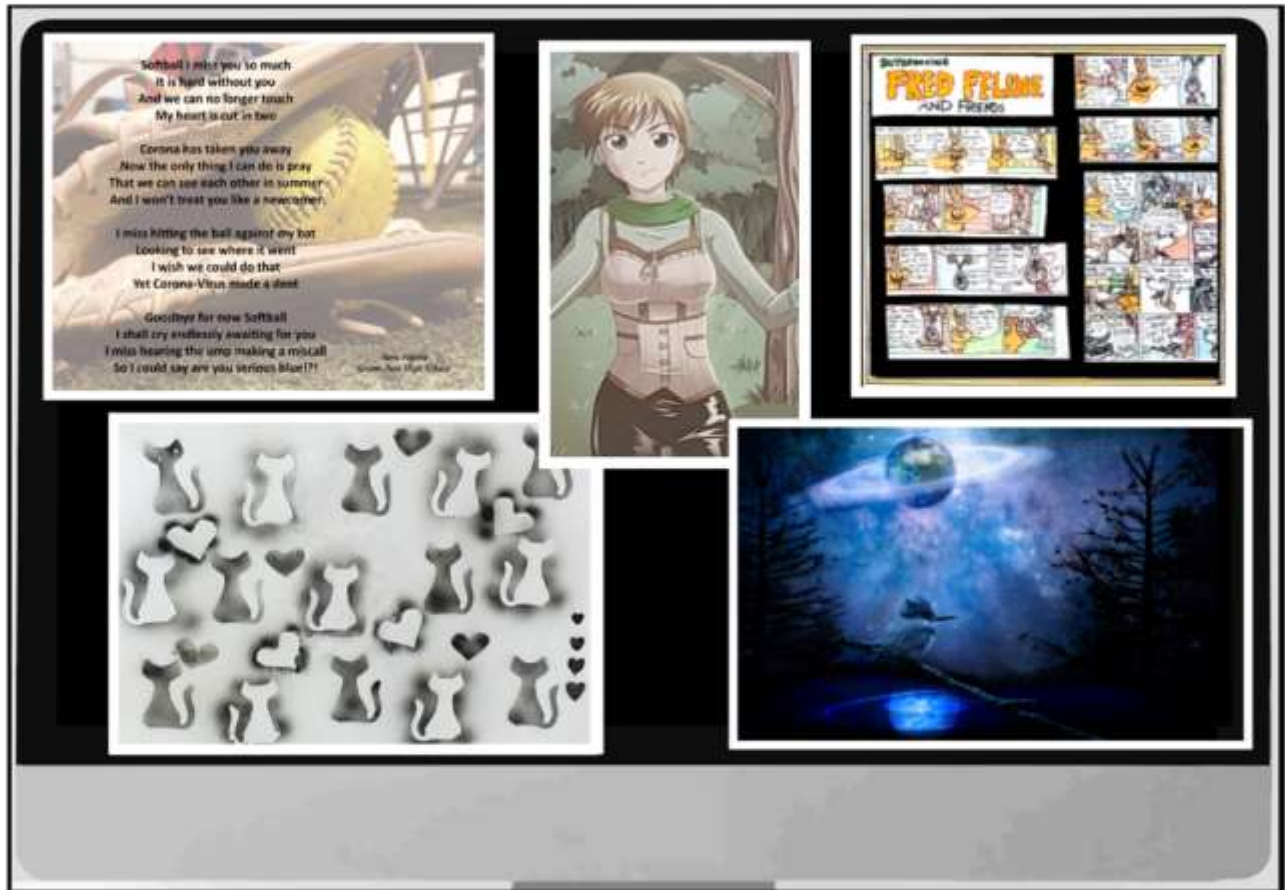


GRAPHIC & LITERARY ARTS



**AUGUST
10-14, 2022**



GENERAL RULES FOR NON-LIVESTOCK EXHIBITS

1. All articles entered must be the work of the Exhibitor and have not been previously Exhibited in a prior year at the Josephine County Fair.
2. Online Entries must be submitted by the date stated and published within each Department's Rules. Information must be accurate and complete.
3. Entries must be delivered and removed only during the published scheduled times. Removal of an Exhibit before the designated time forfeits all awards for that Exhibit. Items not picked up within 10 days after the close of Fair are forfeited by the Exhibitor.
4. Entries will receive a claim check upon delivery of their item(s) and must present the claim check in order to pick up items at the scheduled pick-up time after Fair.
5. Superintendent or Judge may disqualify or transfer any Exhibit to a more suitable class which, in their opinion, is not a true representation of the class in which it is entered or if published rules are not followed.
6. Departments are closed to the Public while Exhibits are being judged. Ribbons and/or prizes will be as warranted. All Judge's results are final.
7. Exhibitors found in violation of rules, or to be in practices unethical or adverse to Josephine County Fair, shall be penalized by forfeiture of awards and/or privileges and removed from the Exhibit.
8. The Josephine County Fair Board will take reasonable precautions to ensure the safety of Exhibits while at the Fairgrounds, but will not be responsible for loss, damage, theft or injury of any kind to Exhibits or Exhibitors. Exhibitors shall indemnify and hold harmless Josephine County which shall include all authorities, boards, bureaus, commissions, divisions, departments, districts and offices of Josephine County and the individual members, employees and agents thereof in their official capacities.
9. Media Disclaimer: Josephine County Fair reserves the right to use any photo or video taken at any event without the expressed written permission of those included within the photo or video. Josephine County Fair may use the photo or video in publications or other media. To ensure the privacy of an individual, images will not be identified using names or personal identifying information without written approval from the photographed Subject, Parent or Legal Guardian. Any person not affiliated with Josephine County Fair may not use, copy, alter or modify official Josephine County Fair photos, graphics, videography or other similar reproductions or recordings without the advance written consent of an authorized designee from Josephine County Fair.

COMPETITION RULES

Pavilion Building

Superintendent: Tanya Felsheim (541) 471 – 1770

1. All General Rules and Restrictions apply. There are no Entry fees.
2. Entries must be registered online at <https://josephine.fairwire.com/> before submittal.
3. Entry deadline is August 3, 2022.
4. Entries will be accepted on Friday and Saturday before the Fair in the Pavilion between 9am-5pm.
5. Professionals and Semi Professionals are welcome this year, and are eligible for Blue, Red, and White Ribbons, as well as, People's Choice.
6. Only one Entry per Exhibitor per Class.
7. Sitting base not to exceed 24"x36". Larger Exhibits must have prior approval before accepting. Poster sizes are acceptable for wall hanging.
8. Traditional and Digital Media accepted.
9. Adult Division Descriptions:
 - **Beginner:** Adults 18 years and older, Exhibitor has less than 2 years of experience.
 - **Intermediate:** Adults 18 years and older, Exhibitor has 2 to 5 years of experience.
 - **Advanced & Semi Professional:** Adults 18 years and older, Exhibitor has taught small classes/small amounts of work sold.
 - **Professional:** Adults 18 years and older, Exhibitors engaging in the business, currently or in the past, who are commissioned or currently teach.

DIVISIONS

1300 - 1308 Literary Arts.....	Page 3
1309 - 1317 Calligraphy & Lettering Displays.....	Page 4
1318 - 1326 Graphic Arts	Page 4
1327 - 1335 Digital Mixed Media & Scrapbooking	Page 4

CLASSES

1300-1308 Literary Arts

- 396** Original Poetry, Free Verse, 8-40 Lines
- 397** Original Poetry, Rhymed Poetry, 8-40 Lines
- 398** Original Poetry, Short Poem, up to 5 Lines, Rhyme, Free Verse, Haiku
- 399** Graphic Novel
- 400** Short Story 5 Pages or Less, Anecdotal or Fiction

1309-1317 Calligraphy & Lettering

- 401 Original Verse, Hand Lettered
- 402 Original Verse, Digitally Enhanced
- 403 Public Verse, Hand Lettered
- 404 Public Verse, Digitally Enhanced
- 405 Modern Lettering, Hand Lettered
- 406 Modern Lettering, Digitally Enhanced
- 407 Illuminated Lettering, Hand Lettered
- 408 Illuminated Lettering, Digitally Enhanced
- 409 Illustrative Poster or Sign, Hand Lettered
- 410 Illustrative Poster or Sign, Digitally Enhanced

1318-1326 Graphic Arts

- 411 Digital/Digitally Enhanced Cartooning, Single Page
- 412 Digital/Digitally Enhanced Fan Art
- 413 Digital/Digitally Enhanced Mandalas
- 414 Digital/Digitally Enhanced Zentangles
- 415 Digital/Digitally Enhanced Abstract
- 416 Digital/Digitally Enhanced Graphic Novel
- 417 Digital/Digitally Enhanced Composite/Fantasy
- 418 Traditional Mediums (Pen, Inks, etc.) Cartooning, Single Page/Poster
- 419 Traditional Mediums (Pen, Inks, etc.) Fan Art
- 420 Traditional Mediums (Pen, Inks, etc.) Mandalas
- 421 Traditional Mediums (Pen, Inks, etc.) Zentangles
- 422 Traditional Mediums (Pen, Inks, etc.) Graphic Novel
- 423 Traditional Mediums (Pen, Inks, etc.) Abstract
- 424 Traditional Mediums (Pen, Inks, etc.) Spray Paint Art
- 425 Traditional Mediums (Pen, Inks, etc.) Graffiti Art
- 426 Traditional Mediums (Pen, Inks, etc.) Acrylic Pouring

1327-1335 Digital Mixed Media & Scrapbooking

- 427 Mixed Media Wall Hanging
- 428 Mixed Media Journal/Cover
- 429 Mixed Media, Other (Specify)
- 430 Digital Scrapbooking (Up to two – 12"X12" pages hangable)