

AUGUST 7-11 2024

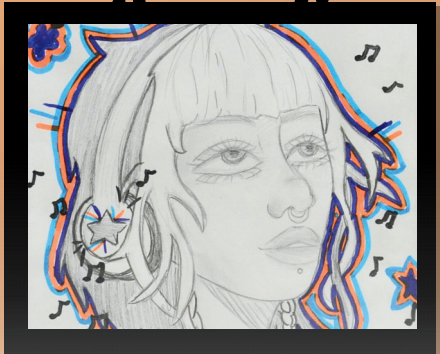
FINE ARTS (YOUTH)



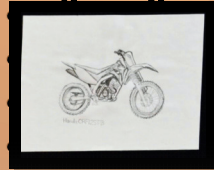
All Rights Reserved



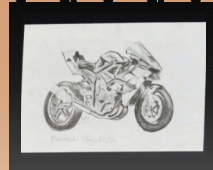
All Rights Reserved



All Rights Reserved



All Rights Reserved



JOSEPHINE COUNTY FAIR

OFFICIAL EXHIBIT GUIDE



GENERAL RULES FOR NON-LIVESTOCK EXHIBITS

1. All articles entered must be the work of the Exhibitor and have not been previously exhibited in a prior year at the Josephine County Fair.
2. Online entries must be submitted by the date stated and published within each Department's Rules. Information must be accurate and complete.
3. Entries must be delivered and removed only during the published scheduled times. Removal of an exhibit before the designated time forfeits all awards for that exhibit. Items not picked up within 10 days after the close of Fair are forfeited by the Exhibitor.
4. Entries will receive a claim check upon delivery of their item(s) and must present the claim check in order to pick up items at the scheduled pick-up time after Fair.
5. Superintendent or Judge may disqualify or transfer any exhibit to a more suitable Class which, in their opinion, is not a true representation of the Class in which it is entered or if published rules are not followed.
6. Departments are closed to the Public while exhibits are being judged. Ribbons and/or prizes will be as warranted. All Judge's results are final.
7. Exhibitors found in violation of rules, or to be in practices unethical or adverse to Josephine County Fair, shall be penalized by forfeiture of awards and/or privileges and removed from the exhibit.
8. The Josephine County Fair Board will take reasonable precautions to ensure the safety of exhibits while at the Fairgrounds, but will not be responsible for loss, damage, theft or injury of any kind to exhibits or Exhibitors. Exhibitors shall indemnify and hold harmless Josephine County which shall include all authorities, boards, bureaus, commissions, divisions, departments, districts and offices of Josephine County and the individual members, employees and agents thereof in their official capacities.
9. Media Disclaimer: Josephine County Fair reserves the right to use any photo or video taken at any event without the expressed written permission of those included within the photo or video. Josephine County Fair may use the photo or video in publications or other media. To ensure the privacy of an individual, images will not be identified using names or personal identifying information without written approval from the photographed Subject, Parent or Legal Guardian. Any person not affiliated with Josephine County Fair may not use, copy, alter or modify official Josephine County Fair photos, graphics, videography or other similar reproductions or recordings without the advance written consent of an authorized designee from Josephine County Fair.

FINE ARTS (YOUTH) COMPETITION RULES

Pavilion Building

Superintendent: Kris Haffner

(415) 577 – 1381

jocofineart@gmail.com

RULES:

1. All General Rules and Regulations Apply.
2. All Artwork/Entries must be registered online at <https://josephine.fairwire.com/> prior to drop off/submittal. Entry deadline is July 31st, 2024, by Midnight.
3. Artwork/Entries must be Submitted/Dropped off Friday August 2 between noon-7pm, and Saturday August 3 between 9am-3pm, in the Pavilion Building. **NO LATE ENTRIES WILL BE ACCEPTED.**
4. Artwork/Entries will be released Monday August 12th, 2024, after the Fair from 9am -2pm.
5. Artwork/Entries left for more than 30 days will become property of the Fair.
6. Any Artwork/Entry previously shown in the Josephine County Fair (or any other fair) may not compete.
7. Multiple Artwork/Entries brought in by same Exhibitor must be brought in at same time with the with the same registration number. Assign a different Class number for each item and provide a “title” for each piece of work submitted.
8. Exhibitor limited to **2 Artwork/Entries total**. (This means one artwork per medium/subject matter)
9. **NO wet, unmatted, or unframed artwork will be accepted (if it cannot be hung by a single hook it will not be displayed. NO ALLIGATOR CLIPS OR STRING AND TAPE)**
10. Watercolors, Dry pigment, Charcoal, Pastels, etc. May be framed under glass or plexiglass (preferred).
11. Dimensions of Artwork/Entries are **Not to exceed 24” x 36” or 36” x 24” or weigh more than 5lbs.** For hanging art. We will be accepting 8-10 large scale works this year, but approval must be given by the Superintendent prior to drop off day as space is limited.
12. All Artwork/Entries must be Matted or Framed and have a sturdy eye-screw and wire hangers on back of Foam-core or Matt-board pieces. Artwork must be securely mounted on top of a Matt-board or sandwiched between window cut-out mat-boards and may be left uncovered. Shrink wrap that is tightly and neatly taped is acceptable. **If it cannot be hung by a single hook it will not be displayed. Agine NO string and tape or alligator style hangers accepted!**
13. Digital Art: must be an original piece of fine art created by you. Please submit digital altered Photography to the Photography Department. Must Be Printed and Framed no digital display available.
14. Sculpture should not exceed 24” X 32” and Handful of larger entries may be accepted but will require Superintendents Approval prior to Drop off.
15. Copy Work is defined as: “The reproduction of another artist’s work. This class protects you, the artist, from liability of plagiarism and copyright infringement laws. **You must include a copy of the original along with credit to the original Artist** (if available), not to exceed 8” x 11”.
16. Classwork is defined as: “Work created in a class or workshop environment where instruction is provided in new techniques, methods, and mediums and/or work produced by all students is of a common subject”.
17. “Best Portrait of a Local Shelter Animal” Class - All entries must include a photograph (not to exceed 8.5” x 11”) of the animal being depicted, as well as, which shelter it was in and animal’s name. The animal must either be in a local shelter or adopted in 2024.

18. Presentation is Part of Fine Art Judging and can break a tie. Please see local Hobby/Frame stores for help.
19. The Superintendent reserves the right to reclassify artwork or combine classifications as needed, according to the total number of Entries. They may also use Her/His discretion to refuse inappropriate artwork/entries.
20. While the Superintendents, Judges and Fair Staff appreciate that art, especially Fine Art is subjective, we do ask that Artists to take into consideration The Family Friendly Nature of the event when creating their Artwork/Entries and refrain from overtly Sexual NO NAKED FORMS! (no rear ends, or suggestive forms please!!), Graphic NO VIOLENT or POLITICS Subject matter. If subject matter is deemed inappropriate it may not be displayed. Let's keep this a fun family event for all.
21. Display Space is Limited. Depending on number of entries some Artwork/Entries may not be Displayed. Staff will do it's best to accommodate all Artwork/Entries.
22. Ribbons awarded for each Division / Class are 1st, 2nd, 3rd, and Honorable Mention. All will receive a Participation Ribbon.
23. One ribbon will be awarded for "Most Creative," Superintendents Choice", "Best of Show," and "People's Choice". A special ribbon for "Best Fair Theme: "Rockin' thru the Decades", as well as "Best Depiction of a Local Shelter Animal."
24. A Best in Division Ribbon will be awarded to one artwork per Division. As well as one Best in Class per Class.
25. All 1st place winners are eligible for State Fair "Best of the Best" for the year 2024. Contact the State Fair for more information.

Oregon State Fair

Phone: (971)701-6571

E-mail: creativeliving@oregonstatefair.org

FINE ARTS (YOUTH) DIVISIONS

- 1283** Fine Arts: age 6 years and under (or turning 6 in 2024)
- 1284** Fine Arts: age 7 - 10 (or turning 10 in 2024)
- 1285** Fine Arts: Age 11 -14 (or turning 14 in 2024)
- 1286** Fine Arts: age 15 - 18 (or turns 18 in 2024) (*those turning 19 in 2024 should enter in Adult Divisions*)
- 1287** Fine Arts: Special Needs

ALL FINE ARTS (YOUTH) DIVISIONS/INDIVIDUAL CLASSES

- 373** Watercolor (Tempera, Watercolor paint, Watercolor Pencil)
- 374** Acrylic/Oil
- 375** Drawing in Black and White and Color (Pencil, Graphite Stick, Pen and Ink, Charcoal, Markers, Crayons)
- 376** Pastels (Dry and Oil Sticks)
- 377** Mixed Media, Abstract, Collage/mosaic, Miscellaneous/Mediums other than listed
- 378** Digital Fine Art
- 379** Pour Painting
- 380** Class Work/Copy Work (see rules #15 and #16)
- 381** Fair Theme: "Rockin' thru the Decades" (any medium)
- 382** Best Depiction of a Local Shelter Animal (any medium)
- 383** Block Printing
- 384** Sculpture (wood, clay, glass, or metal)