

VISITOR GUIDE 2022



# KANSAS STATE FAIR

**CELEBRATING**  
*all things* **KANSAS**

SEPTEMBER 9-18 ♦ HUTCHINSON, KS



# TABLE of CONTENTS

3	New in 2022
5	Listen Up!
7	Gate Admission
8	The Midway
9	Education
10	Competitive Events
12	Livestock
14	Concerts & Free Stage
16	Fairgrounds Map
18	Special Attractions
19	Day Sponsors
20	Sponsors
22	Full Schedule

## MESSAGE FROM THE GOVERNOR

Welcome to the 2022 Kansas State Fair!

The annual State Fair is always one of my favorite Kansas events. I just love it – where else can you weigh the state's largest watermelon, cheer on piglets racing around a track, or see a buffalo sculpted out of 700 pounds of butter?

There's a reason this event is deeply rooted in Kansas history, though I must admit, it got off to a rocky start. The first Fair was hosted in 1873, in the newborn town of Hutchinson, but an angry horde of grasshoppers prevented the 1874 Fair from ever happening.

Thankfully, the Fair organizers persevered, and nearly 150 years later, more Kansans gather at the State Fair than anywhere else. Generations of Kansans have made lifelong memories on these very grounds, celebrating what we all love about our great state.

That's why my Administration is proud to partner with the State Fair to continue to enhance this valuable attraction. This year, I signed bipartisan legislation that allows the State Fair to keep the tax revenue collected from liquor sales and reinvest those right here on the Fairgrounds. As part of this partnership, the state will be investing

nearly \$15 million to completely reimagine and restore the Bison Arena, improve walkability, update the public address system, finish the Expo Center renovation, and provide air conditioning in the 4-H Centennial Hall and Oz Gallery. I look forward to continuing to work with the State Fair to ensure this unique opportunity for education, agriculture, food, and entertainment continues to attract visitors and bring Kansans together for years to come.

No matter what brings you to the Fair, I can't wait to join you. (You might just catch me checking out the cheesecake and jerky competitions—a couple of the tasty new additions to this year's Fair!) And I especially want to thank everyone who works so incredibly hard to make this event a reality year in and year out. You make the Sunflower State proud.



*Laura Kelly*

LAURA KELLY  
Governor of Kansas

## MESSAGE FROM THE PRESIDENT

Welcome to the BIG EXPERIENCE of ALL THINGS KANSAS! We are glad you are joining us at the 2022 Kansas State Fair!

As you travel through this year's Fair, I encourage you to be in the moment and enjoy what our "present" has to offer. Our Kansas youth have spent countless hours preparing for this event. Noticing this effort offers encouragement of the work ethic being instilled statewide to "make the best better." It also preserves and improves countless *past* processes in agriculture for our *future* to experience. The 4-H & FFA exhibits and High School Bands are sure to impress you as you peruse the Fairgrounds.

The ENTERTAINMENT this year will not disappoint! From our new Lake Talbott Stage to Peoples Bank and Trust Arena and across the way to the Grandstand there is something planned for everyone. There are rising stars along with some of our all-time favorite acts ready to amaze you and create unforgettable memories.

And we cannot forget the FOOD and FUN. Delectable dishes await your palate throughout the Fairgrounds. Join in the pub crawl for some great socializing. While enjoying, be sure to catch a pig race, goat milking, or maybe the grape stomping before hitting the midway for rides late into the night.

THANK YOU for being here. YOU are the reason for the continuing success of the Kansas State Fair.

Here's to You in '22!



*Paula Landoll-Smith*

PAULA LANDOLL-SMITH  
President of the Board  
Kansas State Fair

# NEW *in* 2022

## LED MESSAGING SCREENS

To enhance the guest experience, the Fair is adding eight High-Definition LED Messaging Screens around the Fairgrounds. Informative messages highlighting special events, attractions and entertainment will be displayed.

## CONCERT: FREE GATE TICKETS

This year, no matter when you order your Nex-Tech Grandstand concert tickets, you will receive free gate admission for the day of the concert! Hold on to your concert ticket as it includes the barcode for both the gate and the concert.

## SB2 ALCOHOL WALK-ABOUT

Patrons will now be allowed to leave designated alcohol vendor establishments and enjoy the Fair's attractions and entertainment with their beverage in hand. Alcoholic beverages must be in a clear plastic cup and stay on the Fairgrounds.



## NEW AT THE NEX-TECH GRANDSTAND

### NEW PARTY PIT SPONSOR!

The **MEL HAMBELTON FORD PARTY PIT** is the premium experience for Kansas State Fair concert goers. This exclusive area, right in front of the stage, gives you a dynamic and intimate concert experience.

### METAL AND SOUL VIP PATIO EXPERIENCE

Get all of your friends close to the stage at your own table, hand-crafted by our local partner - Central Welding. Contact the KSF Ticket Office to reserve your table today!



Two of the Fair's Day Sponsors are offering Fairgoers new deals on gate admission! Like the ever popular Dillon's Dollar Day, this will save you money at the gate so that you have more to spend on your favorite foods and rides.

## SIGNIFICANT UPGRADES

Each year the Kansas State Fairgrounds aim to make your experience at the Fair even better than the last. This year is no different as the newly remodeled **EXPO CENTER** and **LAKE TALBOTT STAGE** are unveiled. Be sure to stop by and check them out!

## NEW DEALS

from **OUR DAY SPONSORS**

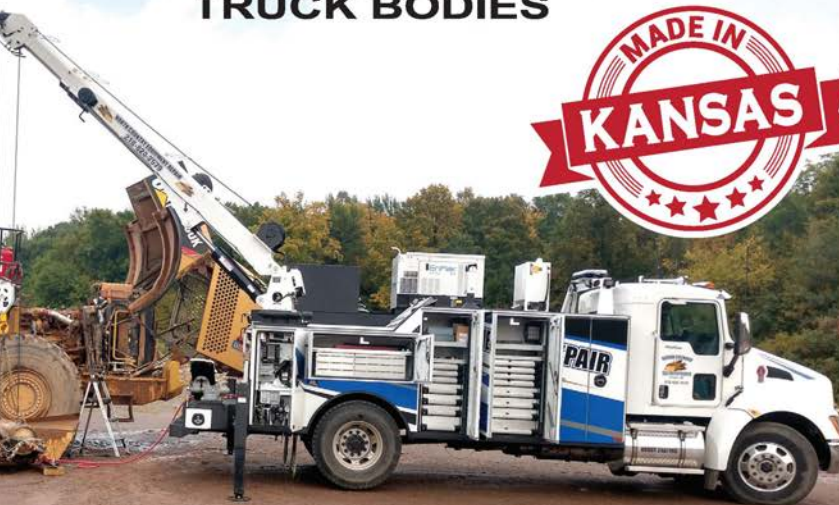
**YOUNG AT HEART DAY** On Thursday, Sept. 15, The Kansas Department for Aging and Disability Services is having Young at Heart Day to celebrate our seniors. Tickets are only \$2 for those 55 and older. There will be Bingo at Dillon Hall from 2:00 to 3:30 P.M.

**CHIEFS RED FRIDAY** On Friday, Sept. 16, the Kansas Lottery is sponsoring Chiefs Red Friday. Members of the PlayOn app can get through the gate for only \$2. Visit [www.kslottery.com](http://www.kslottery.com) to become a member for free. Fairgoers are encouraged to wear their Kansas City Chiefs gear.





TRUCK BODIES



REACH **FOR THE** PEAK

**A HIGHER STANDARD  
IN TOOL STORAGE**

**DRAWER PACK**

- ▶ Aluminum Construction
- ▶ Single-action latch assembly with lock & key
- ▶ 600 lbs capacity per drawer
- ▶ Lock-in/lock-out drawer slides

**BOLT BIN**

- ▶ Aluminum Construction
- ▶ Pull style handles
- ▶ Removable Door Enclosure

**QUICK 2 WEEK LEAD TIME ON DRAWER SYSTEM ORDERS**

**ELEVATE CRANE PERFORMANCE**

Summit's line of electric and hydraulic telescopic service cranes lifting capacities range from 4,000 lbs. to 14,000 lbs. with a maximum reach of 29 ft. Designed with strength, durability, and safety, Summit cranes can meet the demands of heavy-duty applications.



CONTACT SUMMIT PARTS FOR MORE INFO **888-402-8104**  
OR VISIT **SUMMITBODIES.COM**



**MATTRESSFIRM**

**READY  
FOR A  
BREAK?**

Visit our Sleep Experts™ at  
the Mattress Firm booth.



metallandsouls.com • 620-663-9353

**CUSTOM METAL  
PROJECTS LARGE OR  
SMALL SINCE 1955**



Get all of your friends close to the stage at the Nex-Tech  
Grandstand on the Metal & Soul VIP Patio with

**YOUR OWN TABLE  
HANDCRAFTED BY METAL & SOUL**

Contact the KSF Ticket Office to reserve yours today!



# LISTEN UP!

Here's what you need to know to navigate everything from the fried food, to the Midway, to the barns, and the rest of the Kansas State Fairgrounds.



## WHAT YOU CAN BRING

Wagons, coolers with non alcoholic beverages, your own food and service animals.



## WHAT YOU CAN'T BRING

Bicycles, skateboards, pets, alcohol and glass bottles. Bicycle racks are located at gates 1, 3, and 9.

For more information on items that are allowed in the Fair, see the Frequently Asked Questions on the Fair's website - [www.kansasstatefair.com](http://www.kansasstatefair.com).



## FIRST AID

Located at the west end of the Administration Building.



## AEDS

AED Deffibrillators are located throughout the Fairgrounds. Thanks to our Partner: Blue Cross Blue Shield of Kansas Foundation.

## TRANSPORTATION RENTALS



Wheelchair, stroller, and mobility carts are available for rent at two locations: south of Gate 5 and west of Gate 9. For more information and reservations contact Scootaround Mobility Rentals at 1-888-441-7575.



## TRAMS

See the Fair map in the guide for tram stop locations. Sponsored by Evergy and Kansas Department for Aging and Disability Services.

## LOST & FOUND

The Lost and Found is located at the west end of the Administration Building (620) 669-3637.

## ELECTRIC CAR CHARGING

The nearest charging stations are located at the Hutchinson Regional Medical Center and Strataca Salt Museum.

## ADA ACCESSIBLE PARKING



There are three paved areas available in the public parking lots: Gate 5, south of State Fair Rd.; Gate 8, corner of 23rd Ave. and Plum St.; Gate 9, corner of E. 20th Ave. and Plum St.



## MERCHANDISE

Show your love of the Fair! State Fair merchandise is sold at the Kansas Fairgrounds Foundation booth near the fountain across from Ye Old Mill.

## NURSING MOTHERS ROOMS



Rooms that offer privacy and a quiet atmosphere for nursing are located in the Encampment Building and at Cottonwood Court in the Women's Restroom.



## GATE HOURS

**11 A.M. to 10 P.M.**  
FRIDAY, SEPT. 9

**7 A.M. to 10 P.M.**  
SEPT. 10 - 17

**7 A.M. to 6 P.M.**  
SUNDAY, SEPT. 18



## BUILDING HOURS\*

**11 A.M. to 9 P.M.**  
FRIDAY, SEPT. 9

**9 A.M. to 9 P.M.**  
SEPT. 10 - 17

**9 A.M. to 6 P.M.**  
SUNDAY, SEPT. 18

\*some exceptions apply, go to Plan Visit on the Fair's website for the most up-to-date hours on specific buildings.



renoirlabs.com

# Facial Rejuvenation

## Cutting-Edge LED Anti-Aging

---

### YOUNGER - HEALTHIER SKIN

- Dual Action Technology
- 100% Safe & Natural
- Dermatologist Tested
- Lifetime Warranty

[www.RenoirLabs.com](http://www.RenoirLabs.com)



LOCATED IN THE  
MEADOWLARK BUILDING, #87 & #88

# GATE ADMISSION

TYPE	BEFORE SEPT. 9	SEPT. 9-18
Adult (age 13+)	\$7	\$10
Child (age 6-12)	\$4	\$6
Senior (age 60+)	\$4	\$6
Military w/ ID	\$4	\$4

Purchase your Kansas State Fair tickets before Sept. 9 for discount gate admission! Ticket outlets include the Kansas State Fair ticket office at 2000 N. Poplar, online, or any Kansas Dillons store. Military tickets can be purchased at the Fair gates.

## SEASON PASS

**\$50** (\$100 value)

- ♦ 10 gate admission scans on a card
- ♦ Can be used one per day, all at once, or in any increment



## SAVE on GATE ADMISSION!

Check page 19 for more information on Sponsor days



**MONDAY, SEPT. 12**  
\$1 or free w/ Dillons Plus

**EVERY DAY**  
\$5 after 9 P.M.

**TUESDAY, SEPT. 13**  
\$4 after 4 P.M.



**THURSDAY, SEPT. 15**  
\$2 for 55 and older



**FRIDAY, SEPT. 16**  
\$2 for PlayOn members

For more information on our kids, family, seniors and couples packages and passes, call 620-669-3618 or visit [kansasstatefair.com](http://kansasstatefair.com) and click on Buy Tickets. Supplies are limited, purchase before Sept. 9.

## TASTY

*tuesday*

**SEPT. 13 \$2.00 CONCESSIONS**

Find new favorites • Try something different  
• Introduce your favorites to your friends •

Pick up a flyer at the gate to see participating vendors!

## SHOP 'til you DROP

*on* **WEDNESDAY SEPT. 14**

Get the best deals of the week at a wide selection of vendors!





# MIDWAY

SCHEDULES, DEALS AND MORE

## GREAT DEALS

### 5 RIDE PUNCH CARD, \$15

Allows for one ride each on the Ye Old Mill, State Fair Boats, Giant Yellow Slide, Sky Ride and KSF Railroad — a \$19 value. Purchase at the Kansas State Fair Ticket Office. Not available after Sept. 9.

### WRISTBANDS, \$35\*

Ride any midway ride as many times as you want on ONE wristband day. See Midway Schedule for dates.

### DILLONS RIDE SHEETS, \$20\*

Purchase a sheet of 20 ride tickets at the KSF Ticket Office. Purchase vouchers for 20 ride tickets at any Dillons store to be exchanged for actual tickets during the Fair. Price increases to \$25 after Sept. 8.

*\*Excludes Train, Sky Ride, Ye Old Mill, Big Slide, and Boat Ride. Available at the KSF Ticket Office or online at [kansasstatefair.com](http://kansasstatefair.com).*

### THRIFTY THURSDAY

Haven't purchased your wristband yet? You're in luck! Wristbands are discounted to \$30 at Midway Ticket Booths on Thursday, Sept. 15!



## MIDWAY SCHEDULE

DATE	SPECIALS	TIMES
Fri, Sept. 9	Wristband Day	3 p.m. - 11 p.m.
Sat, Sept. 10		11 a.m. - 11 p.m.
Sun, Sept. 11		Noon - 10 p.m.
Mon, Sept. 12	Most Rides 1 Ticket	Noon - 10 p.m.
Tues, Sept. 13	Wristband Day	1 p.m. - 10 p.m.
Wed, Sept. 14	Wristband Day	Noon - 10 p.m.
Thurs, Sept. 15	Wristband Day	3 p.m. - 10 p.m.
Fri, Sept. 16	Wristband Day	Noon - 11 p.m.
Sat, Sept. 17		11 a.m. - 11 p.m.
Sun, Sept. 18	Wristband Day	Noon - 8 p.m.

RIDE	PRICE	TIME
Big Slide	\$3 (4 for \$10)	9 a.m. - 7:30 p.m.
State Fair Boat Ride	\$4	9 a.m. - 7:30 p.m.
Sky Ride	\$4 - \$6	9 a.m. - 7:30 p.m.
State Fair Railroad	\$4	9 a.m. - 7:30 p.m.
Ye Old Mill	\$4	10 a.m. - 10 p.m.

## FAIRGROUND RIDES & SCHEDULE

Questions? Contact the KSF Ticket office at 620-669-3618





the

# KANSAS STATE FAIR

# IS KANSAS' LARGEST CLASSROOM

There is no shortage of learning opportunities! Each year, more than 13,000 students from preschool to high school travel to the Fair to learn more about the richness of our state through hands-on experiences.



## EDUCATION CENTER

*Sponsored by Kansas Farm Bureau*

Students, parents and teachers can learn more about the Fair's plethora of educational opportunities at the Education Center. Activities and displays focus on the importance of pollinators, agriculture production, and the American Bison. Educational materials are also available for pick-up.

Dr. Goddard's Lab gives live rocketry demonstrations at 10 a.m., 11 a.m., noon and 2 p.m. presented by the Cosmosphere.

**Hours/Location:** 9 a.m. to 7 p.m. at the intersection of Bison Boulevard and Lake Talbott Avenue



## BIRTHING CENTER

*Partnership with KSU College of Veterinary Medicine*

A unique experience of the miracle of life – the newborn calves, lambs, piglets, ducklings and chicks are always a hit for Fairgoers of all ages. "Bessie," K-State's birthing simulator cow, provides a hands-on experience of the birth of a calf.

Free Moo U Guided Barn Tours sponsored by the Kansas Farm Bureau begin here at the top of the hour from 9 a.m. to noon and 2 p.m. to 5 p.m.

**Hours/Location:** 9 a.m. to 8 p.m. at the corner of 20th Ave. and Ft. Scott Blvd.

## AGRILAND in the Pride of Kansas Building

Students learn how agriculture touches their daily lives – from the food they eat to the clothes they wear – through hands-on activities. They can weigh themselves on a livestock scale, milk a cow, drive a combine, see how a cotton gin works and learn about what's going on in the living soil under their feet.

## MILKING PARLOR

*Sponsored by Southwest Dairy Farmers and Kansas Dairy*

This live exhibit is narrated by a Kansas dairy professional who walks students through the milking process, the life cycle of a dairy cow and answers questions about milk's journey.

**Hours/Location:** Demonstrations are at the top of the hour 10 a.m. to 2 p.m. & 6 p.m. next to Prairie Pavilion

## AD ASTRA STEM ACTIVITIES

9 A.M. TO 5 P.M. IN THE AD ASTRA BUILDING

### CONSTRUCTION CAREERS ALLIANCE OF KANSAS

This interactive experience introduces youth of all ages to careers in the construction industry. Hands-on activities include an excavator simulator, nail driving competition, remote control dump trucks, virtual reality drone controls, and more.

### KANSAS ELECTRICAL COOPERATIVE SAFETY DEMONSTRATION

Journeyman linemen demonstrate how to tell when a line is energized, what protective gear linemen use, and what happens to a person who comes into contact with an energized line. Students can also build their own electrical circuits.

### THE POWER OF PRODUCTION BY KANSAS STRONG

Energy is essential for the future we hope to create. Learn where oil comes from, how we find it, and the products and energy we can derive from it. This is a fun excursion into energy, geology, history, and the future of Kansas Oil and Natural Gas Producers!

3 ways to

## EARN FREE ICE CREAM!

- ♦ Fill out an Agriculture or Pollinator Passport.
- ♦ Complete a Math-On-A-Stick or Ferris Wheel ABC activities in the Education Center.
- ♦ Take the Moo U tour.

Those who show their completed work at the desk in the Education Center will receive a coupon for ice cream at the Dairy Bar under the Nex-Tech Grandstand.

*Sponsored by Kansas Farm Bureau.*

Visit our website to learn more about field trips and education.



Education related questions? Email [jacki.eckert@ks.gov](mailto:jacki.eckert@ks.gov)

# BEST *of the* BEST

## COMPETITIVE EXHIBITS IN 2022

### NEW COMPETITIONS AT THE FAIR

#### NEW ♦ NEW ♦ NEW

Whether it is showing livestock, growing pumpkins, making pies, or even carving butter, there is something for everyone at the Kansas State Fair. Each year new contests and challenges are welcomed. Two new contests featured in the Domestic Arts Food Department include a **CHEESECAKE CONTEST** sponsored by *Kansas Dairy* and a **BEST JERKY CONTEST**. The Fine Arts Department is also showcasing several new competitive exhibits in the OZ Building including **AMAZING TIE DYED SHOES** and **TABLESCAPE DECORATING**. Before you leave, be sure to stop by the Floriculture Department in the Pride of Kansas Building to see the **INSECT HOTELS!**



### RECORD BREAKING PUMPKIN

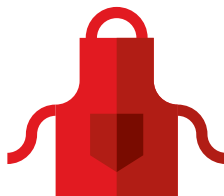
Pumpkins come in all shapes and sizes — but at the Kansas State Fair, it's all about the weight. The giant pumpkin remains a favorite attraction in the Pride of Kansas Building. The heaviest pumpkin receives a \$700 prize and a champion rosette. Last year, Calvin Beeson, of Clyde, KS, broke a long standing record by almost 100 lbs with a 1,127 lb beast of a pumpkin. There will once again be an extra \$100 to anyone who can break this record. *Sponsored by Elliott Mortuary.*



### RED, WHITE, AND BREW



Back by popular demand — we're looking for the best home brew in Kansas! Brewers will be judged and critiqued by members of the Kansas craft beer industry and the Beer Judge Certification Program. The competition includes several beer styles. We'll recognize the best overall beer in the state of Kansas during the onsite finals at 5 p.m. on Sept. 11. Winners will be displayed in the Domestic Arts Building.



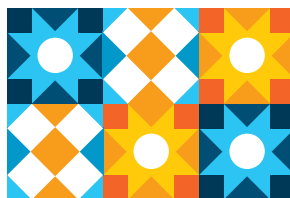
### BEST JERKY

Calling all Jerky dehydrators! This year, guys and gals will show off their favorite Jerky at the Best Jerky Contest. These tasty creations will be judged on Sept. 17 at 1:00 p.m. in the Domestic Arts Building.



### COUNTY CONTEST

Wheat, sunflowers, corn, soybeans... What other Kansas crops can you think of? The Agriculture Dept. is hosting a Scarecrow building contest encouraging the use of a variety of Kansas crops in contestant's designs. *Sponsored by Tailored Roofing and Remodeling.*



### QUILT BLOCK CONTEST

Once again, Kansas quilters are expressing their State Fair memories — on fabric. These blocks will be used to create a State Fair quilt that will be auctioned off during the 2023 Fair. Stop by the Domestic Arts Building to handiwork from all across Kansas. Also, the quilt from our 2021 quilt block contest will be available for purchase. We'll auction off the quilt on Saturday, Sept. 17 at 3:30 p.m. at Peoples Bank and Trust Arena. For more information, email [nancy.j.schmutz@ks.gov](mailto:nancy.j.schmutz@ks.gov).





For more information about the Fair's many Competitive Exhibit categories, visit: [kansasstatefair.com](http://kansasstatefair.com) and click on Competitions. Entry deadline is August 1. A late fee is applied to entries after this date.

## A FLORAL TRADITION

John Stamm was born in Austria in 1864 and immigrated first to Pennsylvania before moving to Hutchinson in 1890. He was a talented florist and even built a glass greenhouse of 20,000 square feet for his John Stamm Florist business. Stamm exhibited his talent in parades and city gatherings and was a consistent Kansas State Fair Floral Exhibit winner from 1900-1915.



## ACTIVE AGRICULTURE

In addition to the amazing home-grown crop displays, the Ag Department is buzzing with activity with the Butter Sculpture Contest on Saturday, Sept. 10 at 1:00 p.m. and the Best Tasting Tomato contest on Sunday, Sept. 11 at 11:00 a.m. You can also try your hand at shucking corn on Saturday, Sept. 17 at 1:00 p.m. As well as contests, the Agriculture and Floriculture Departments are adding several new demonstrations this year! Check them out in the schedule beginning on page 22.

## PRAIRIE QUILTERS 289 SQ. FT. QUILT

The Kansas State Fair is proud to exhibit a special 17' by 17' quilt created by 87 members of the Prairie Quilters' Guild. The quilt was last displayed at the Fair in 1987 and was originally designed and created as a backdrop for the off-Broadway production of "The Quilter."

## THANKS *to* OUR COMPETITION SPONSORS

The Kansas State Fair is thankful for all of the sponsors who make the Competitive Exhibits Department a success.

## RACHEL'S BEST SOAPS

*Domestic Arts Partner*

**MKC** Shared growth.  
Shared success. Sponsor of the  
FFA Department

**BRETZ** Sponsor of  
Boy and Girl Scouts  
INJURY LAW

## PROFESSIONAL ARTS

Come see the Fair's Professional Arts galleries! Professional art exhibits are now located in the buildings north of Lake Talbott across from the 4-H Centennial Hall.



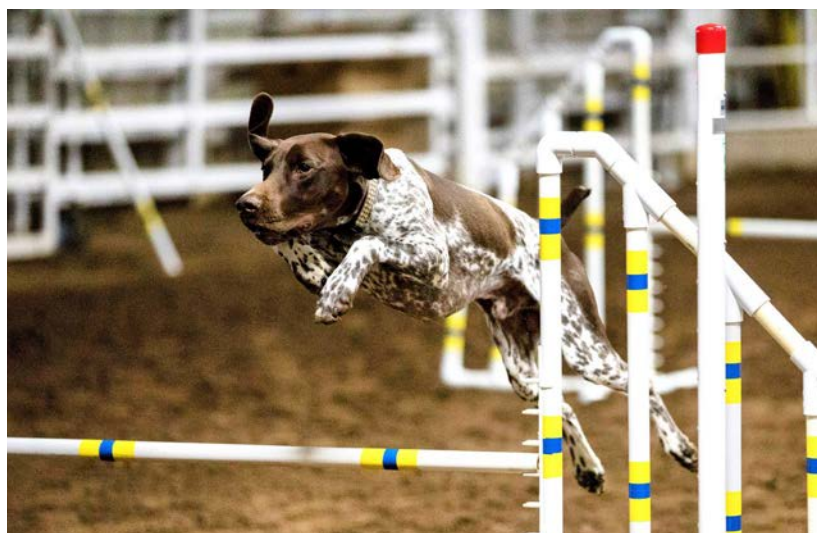
*We're your partner, experienced  
in delivering ag solutions.*

**MKC** Shared growth.  
Shared success.

# LIVESTOCK

and  
the

# GRAND DRIVE



## THE DOG DAYS OF SUMMER

### Dog Demos Return to the 2022 Fair

The Kansas State Fair is excited to welcome back the beloved Dog Demonstrations on Wednesday, Sept. 14. Dog Agility teams maneuver through a Beginner's Level Course hoping to get the least amount of mistakes, in the quickest time. In the Fast Cat demos dogs attempt to catch a lure in their favorite game: chase. K9 Kapers demonstrate fun obedience games to do with your dog. Dogs also show off their sniffing abilities finding and telling their handlers where the hidden scent is.

Experts will also be available to share their best tips and tricks; from deciding which dog is best to introduce to your family to keeping your dog clean and groomed. Plus, get information on local clubs and training classes.

## COMPETITIONS YOU DON'T WANT TO MISS

We've leapt forward in quality livestock events over the years. Here are some highlights to explore at this year's Fair:

**MUSTANG DAYS:** Youth train untamed yearlings in the Wild Horse Youth Challenge. They work to gentle the Bureau of Land Management wild horses over the summer then demonstrate their training skills. See our app for this year's schedule - Sept. 17 and 18. They will be auctioned on Sunday after the show.

**MOUNTED SHOOTING:** Participants ride a course on horseback while shooting balloons with revolvers. On Monday, Sept. 12, demos will be from 9 a.m. to 4 p.m.; competition to follow.

**GRAND DRIVE:** FFA and 4-H youth from across the state compete to be the best of the best in this premier livestock competition. The Drive on Sat., Sept. 10 features the winners of the market beef, sheep, swine and goat shows. Breeding shows will be exhibited on Sunday.

**LLAMAS:** These llama's don't want drama, they just want you to come watch as their exhibitors show them off. Classes include: halter, wool, performance and a costume class. The show is Sat. and Sun., Sept 17 & 18!



## THANK YOU!

### ◆ LIVESTOCK SPONSORS ◆



H&H SHOW SUPPLIES

DEWEZE

COUNTRYSIDE FEED

ORSCHLEN HOME & FARM

B&W TRAILER HITCHES

MARVIN & CINDY ALLEN

WARRIORS FARMS

DILLONS

CUMMINGS CAROUSEL

HIGH PLAINS JOURNAL

HIGH NOON FEED

HIGH CALL OUTFITTERS

JACKSON MEAT

KATTLE ENERGY

YODER MEATS





**Join Our Team!**

[www.landoll.com/careers](http://www.landoll.com/careers)

1900 North Street | Marysville, KS 66508 | Ph: 785-562-5381

QUALITY PRODUCTS

QUALITY EMPLOYMENT

QUALITY OF LIFE

Career Opportunities Available  
and Great Benefits for Your Future...

Consider Joining Our World Class Operation!

EEO: VET AND DISABILITY



Supporting agricultural  
partnerships through Kansas  
Livestock Association is just  
another example of how  
**Merck Animal Health Works.**



**Cargill**

HELPING  
**KANSAS**  
FEED THE WORLD



As a member of the Kansas agricultural community, Cargill nurtures relationships with Kansas farmers, ranchers and others involved with nourishing people, animals and the planet in safe, responsible and sustainable ways.

Cargill's presence in Kansas contributes more than 4,000 jobs in a dozen communities. Our operations include beef processing, livestock and poultry feed production, grain marketing, salt for water conditioning products and other similar uses, plant-based edible oils and a joint venture to produce milled grain items such as flour.

Learn more about the impact of Kansas  
agriculture at [Cargill.com/Kansas](http://Cargill.com/Kansas).

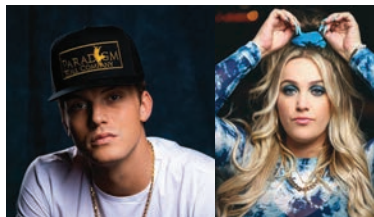


**Crazy  
Communications**



**NEX-TECH<sup>®</sup>**  
GRANDSTAND

# CONCERT SERIES



**PARKER  
MCCOLLUM**  
*with* **PRISCILLA BLOCK**

**SAT, SEPT. 10 ♦ 7:30 PM**



**MON, SEPT. 12 ♦ 7:30 PM**

**DEMO  
DERBY**

**GABRIEL IGLESIAS**  
**"FLUFFY"**

**SUN, SEPT. 11 ♦ 7:30 PM**



**GREAT WHITE**  
*and* **QUIET RIOT**

**THU, SEPT. 15 ♦ 7:30 PM**



**EDDIE  
MONTGOMERY**

**TUE, SEPT. 13 ♦ 7:30 PM**

**TOBY MAC**

**WED, SEPT. 14 ♦ 7:30 PM**



KANSAS LOTTERY CHIEFS RED FRIDAY

**TECH N9NE**  
*with* **BLANE HOWARD**

**FRI, SEPT. 16 ♦ 7:00 PM**

**DIRT TRACK  
AUTO RACING**

**SUN, SEPT. 18 ♦ 5:00 PM**



**T.I.** *with* **CHINGY**

**SAT, SEPT. 17 ♦ 7:30 PM**





# FREE FUN *on the* STAGE

Experience the best concert value of the summer  
on the Kansas State Fair's free stages!



## RON DIAMOND

Our beloved entertainer is back for his 17th year at the Fair! With hypnotism and comedy all in one, Diamond is sure to keep you delighted and amazed with his many demonstrations. Diamond performs daily at the Peoples Bank and Trust Arena. See the schedule beginning on pg. 22 for times.



## SHERWIN & PAM LINTON

Bringing back the image and sound of the JOHNNY CASH SHOW, the Linton's feature a variety of classic music and impressions. Performing at the Peoples Bank and Trust Arena on Fri. Sept. 16 at 2:00 p.m. and Sat. Sept. 17 at 12:00 p.m.

### HIGHLIGHTS AT

## PEOPLES BANK AND TRUST *arena*

**SATURDAY, SEPT. 10**

## WIBW PRESENTS

**GUBERNATORIAL DEBATE 10:30 A.M.**

The Kansas Radio Networks and WIBW Radio, in Topeka, are proud to put on the traditional first debate between the major party Gubernatorial candidates. The candidates will answer questions from selected Kansas media on issues important to Kansas voters.

**SATURDAY, SEPT. 10**

## SATURDAY NIGHT BLUES

**KEEFER MADNESS 6:00 P.M.**

When they perform live you will hear cuts from the Hoodoo Train album, Blues and R&B standards, some southern rock, and the jazz feel will sneak in from time to time.

**GEORGE SANDERS BLUES BAND 7:30 P.M.**

The George Sanders Blues Band out of the Mississippi Delta has been playing blues, pop, and soul music for over 40 years. This 4 piece band's repertoire ranges from BB King to Chris Stapleton's Tennessee Whiskey.

**MONDAY, SEPT. 12**

## AMERICAN SONG CONTEST SEMI-FINALIST



**BRODERICK JONES 5:00 P.M.**

Broderick Jones, a twenty-seven-year-old pop singer from Olathe, KS, was featured on the new show, "American Song Contest," hosted by Snoop Dogg and Kelly Clarkson. The show, which premiered March 28, features 56 contestants, one representing each state in the country. Jones performed his song "Tell Me."

**TUESDAY, SEPT. 13**

## JAZZIN UP THE ARENA

**SALT CITY JAZZ BAND 3:00 P.M.**

The Hutchinson Municipal Band presents the Salt City Jazz Band to open for our night of great jazz!

**DIXIELAND BAND 5:00 P.M.**

The Dixieland Band will take you back in time with joyful ragtime music.

**KS ALL STAR EDUCATORS BIG BAND 6:00 P.M.**

The Kansas All Star Big Band is the featured band of the evening, highlighting the very best jazz players and jazz educators in the state!



**BATTLE OF  
THE BANDS**  
FINALIST PERFORMANCE  
*at the*  
**NEX-TECH GRANDSTAND**

**FRIDAY, SEPT. 9 ♦ 5:00 P.M.**

**KANSAS LOTTERY**

## CHIEFS RED FRIDAY

**FRIDAY, SEPT. 16**

**KC WOLF  
CHIEFS RUMBLE DRUMLINE  
BLANE HOWARD**

## TECH N9NE

**NEX-TECH GRANDSTAND EVENT**

**WEAR YOUR KC CHIEFS GEAR!!**

Buy your concert ticket today  
at [kansasstatefair.com](http://kansasstatefair.com) or  
through the KSF Ticket Office

*Valued Rally Partner: Sleep Shoppe  
& Furniture Gallery*

# FREE PUBLIC PARKING LOT A

# FREE PUBLIC PARKING LOT B

25TH AVE

24TH AVE

23RD AVE

22ND AVE

21ST AVE

20TH AVE

19TH AVE

MAIN ST

HYDE PARK DR



STATE FAIR ROAD



GREEN PARKING  
(PERMIT REQUIRED)

GREEN PARKING  
(PERMIT REQUIRED)

YELLOW PARKING  
(PERMIT REQUIRED)

RESERVED BLUE PARKING  
(PERMIT REQUIRED)

PRIME BLUE PARKING  
(PERMIT REQUIRED)

STAFF PARKING  
(PERMIT REQUIRED)

PURPLE PARKING  
(PERMIT REQUIRED)

4-H CENTENNIAL HALL

ENCAMPMENT BUILDING

KANSAS LARGEST CLASSROOM LITTLE RED SCHOOL HOUSE

AGRICULTURE EDUCATION EXHIBITS

PIG RACES

BISON ARENA

PROFESSIONAL ARTS

LAKE TALBOTT

FREE STAGE AT LAKE TALBOTT

COOL ZOO

KANSAS SHOWCASE

EDUCATION CENTER

SUNFLOWER NORTH BUILDING

SUNFLOWER SOUTH BUILDING

MEADOWLARK BUILDING

HONEYBEE LANE

COTTONWOOD AVE

WHEAT STATE LANE

GRANDSTAND AVE

BUTTER SCULPTURE

PRIDE OF KANSAS BUILDING

DOMESTIC ARTS BUILDING

LAIR WHITE HOUSE

STATE FAIR MUSEUM

PEOPLES BANK AND TRUST ARENA

IDEATEK INTERNET CAFE

KDWPT AQUARIUM

EISENHOWER

TRAIN DEPOT ADMIN OFFICE

LAIR STECKLINE FOUNTAIN

YE OLD MILL

STATE FAIR MERCHANDISE

HOUSE OF CAPPER

GOTTSCALK PARK

FLYING POOLS

OZ GALLERY

AD ASTRA PAVILION

RABBIT/POULTRY

MOO U BARN TOURS

DAIRY TIE BARN

MILKING PARLOR

PRAIRIE PAVILION

LIVESTOCK ANNEX

BIRTHING CENTER

FEED BARN

MIDWAY RIDES & ATTRACTIONS

THE Bobcat CORRAL

Come see us at  
Lake Talbot Road  
& Fort Hays Blvd.



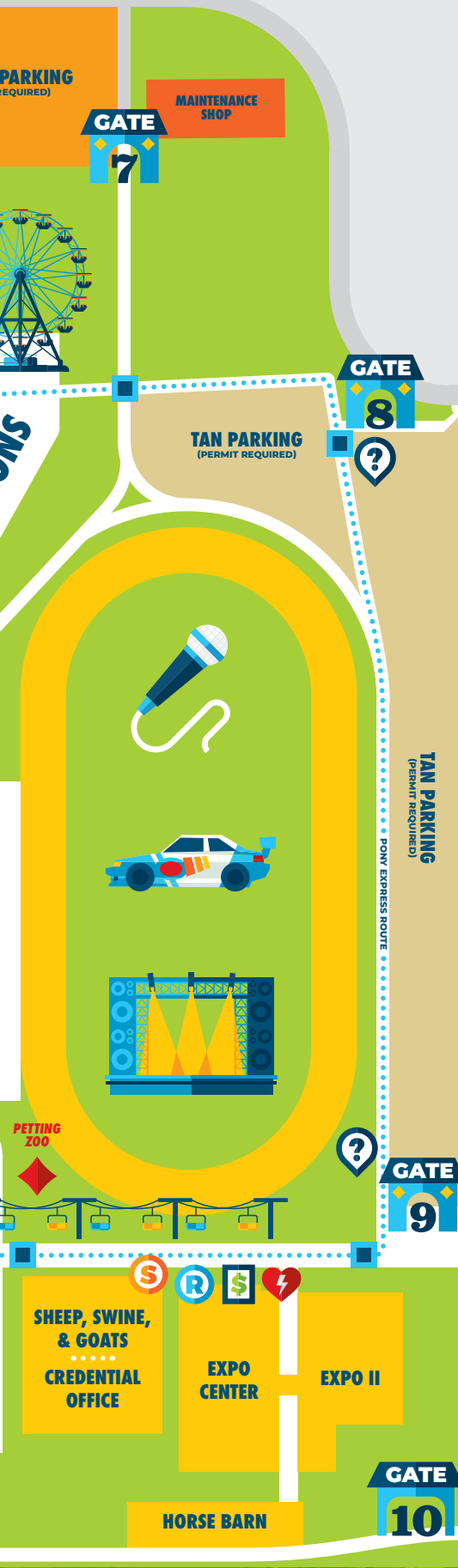
WHITE PARKING  
(PERMIT REQUIRED)

GATE 11

19TH AVE

FORT SCOTT BLVD





# KANSAS STATE FAIR

## 2022 FAIRGROUNDS MAP

**PURCHASE TICKETS:**  
1 • 3 • 4 • 5 • 7 • 8 • 9  
**DRIVE ENTRANCE ONLY:**  
2 • 6 • 10 • 11



**GATES**



**GRANDSTAND TICKETS**



**INFORMATION**



**ATM MACHINES**



**ADA ACCESSIBLE PARKING**



**FIRST AID**



**AED DEFIBRILLATOR**



**SMOKING AREA**



**PUBLIC RESTROOMS**



**SPECIAL ATTRACTIONS**



**POLLINATOR GARDENS**



**NURSING MOTHERS' ROOMS**



**EDUCATION CENTER**



**TRAM ROUTE**



**TRAM STOP**

# THE FUTURE OF THE FAIR

## REIMAGINING THE HOUSE OF CAPPER AND THE BISON ARENA

The Kansas State Fair is excited to announce two major renovation projects that will take place on the Fairgrounds starting in 2022.

**THE HOUSE OF CAPPER** located next to the Administration Building, has been a long-standing icon as a place of entertainment and a relief from the hot Kansas sun. The Kansas Fairgrounds Foundation is in the process of raising funds to rebuild this iconic structure back to its original grandeur. In addition to the building, the Foundation is working with Kansas Co-ops to create a park setting that will tell the story of the Capper-Volstead Act that created Co-ops across the country. This building was named after former Kansas Governor and US Senator - Arthur Capper.



Artist mockups

**THE BISON ARENA** has also been a mainstay for livestock lovers since 1937. The Works Progress Administration-built structure, originally known as the 4-H Club Livestock Pavilion, was used over the years for livestock events, animal shows, antique tractor pulling contests, and other events. The facility was last used for shows during the 2019 Kansas State Fair, after which it was deemed unsafe for public use. Recently, conversations were resumed to re-imagine the use of this iconic structure and to transform it into a showcase facility for an Agriculture Learning and Innovation Center. This Ag Innovation Center would be used year-round to educate all ages and highlight Kansas Agriculture and the bright future that agriculture has for the State of Kansas.



**HELP THE KANSAS STATE FAIR TRADITION CONTINUE FOR FUTURE GENERATIONS** If you are interested in supporting either of these projects on the Kansas State Fairgrounds, your tax-deductible, charitable contribution can be made through the Kansas Fairgrounds Foundation.

To learn more, contact James Fisher, Kansas Fairgrounds Foundation Executive Director, at [james.fisher@kansasSFF.com](mailto:james.fisher@kansasSFF.com) or 816-262-1157. Donations can also be mailed to Kansas Fairgrounds Foundation, 2000 N. Poplar, Hutchinson, KS 67502.

## SPECIAL ATTRACTIONS

### COOL ZOO

Experience exotic birds and animals, including alligators, giant tortoises, snakes, and kangaroos! Cool Zoo also provides gem mining and the opportunity to adopt your very own hermit crab from their Hermit Crab Adoption Center!

Cool Zoo is a wildlife encounter experience with a mission to curate hands-on conservation, education, recreation and research for many generations to come.

Along with their wildlife encounter, Cool Zoo will be giving daily performances at Lake Talbott. Refer to the schedule for times.



### ROVING ACTS

#### MAX POWER & NITRO

Interactive 9 foot tall robot MAX POWER and his music pumping, mini monster truck NITRO are excited to roam around the Kansas State Fair. MAX walks, talks, dances, and more - creating an instant party wherever he shows up!



#### DANGEROUS FEATS OF COMEDY

An amazing blend of comedy, juggling, strength, and balance, Dangerous Feats of Comedy will enchant and captivate everyone. Get ready for a high energy dangerous production contrasted with up beat humor, sure to make everyone laugh.





# our DAY SPONSORS

Our Day Sponsors are important to keeping the Fair running.  
A few even offer special deals on gate admission!

SEPT. 10

**SATURDAY**



SEPT. 12

**MONDAY**



SEPT. 13

**TUESDAY**



SEPT. 11

**SUNDAY**



**DILLONS DOLLAR DAY**

Gate admission is just \$1 for general public or get in FREE with a Dillons Plus Card on Monday, Sept. 12! One person admitted per card.

SEPT. 14

**WEDNESDAY**



SEPT. 15

**THURSDAY**



**YOUNG AT HEART DAY**

We're starting a new tradition celebrating our beloved seniors! On Thursday, Sept. 15, gate admission is only \$2 for those 55 and older.

SEPT. 16

**FRIDAY**



**CHIEFS RED FRIDAY**

Gate admission is only \$2 for PlayOn members who show their app at the gate on Friday, Sept. 16. Visit [www.kslottery.com](http://www.kslottery.com) to become a member for free.

SEPT. 17

**SATURDAY**



SEPT. 18

**SUNDAY**



# CELEBRATING

◆ ◆ ◆ ◆ *our* ◆ ◆ ◆ ◆

# SPONSORS



## PLATINUM



Dillons Dollar Day



Tram



Official Lawnmower  
Supplier



KDADS Young at  
Heart Day & Tram



Education Partner



Ike the Bison &  
Official Apparel Provider



Fairgrounds Screens



Official Tractor & Gator  
UTV / Side by Side Supplier



Kansas Lottery  
Chiefs Red Friday



Grandstand



Main & Pulm Street  
Digital Signs



Reno County Youth  
& Public Wifi Provider



## GOLD

**Peoples**  
Bank and Trust

**DIRECTV**



**AMERICAN** SLEEP THERAPY



Arena

Day Sponsor

LED Screens

Day Sponsor

Official Vehicle  
Provider



Gottschalk Park  
Entertainment



Day Sponsor



Day Sponsor



Day Sponsor

## SILVER

Aqua Haven  
Blue Cross Blue Shield of  
Kansas  
Continental Siding  
Cox Communications

Crosswinds Casino  
DISH - USA Expo  
Leon Global Group -  
Forever Beauty  
Mattress Firm

Metal & Soul / Central  
Welding  
Nature Hill - NV Vitamask  
Rachel's Best Soaps (and  
Skin Care)  
Shirts & Shades

Sleep Shoppe and  
Furniture Gallery  
Tailored Roofing &  
Remodeling  
Thrasher  
Ultra Modern Pool & Patio

## BRONZE

B&W Trailer Hitches  
Cellular Sales of Kansas,  
LLC  
Construction Careers  
Alliance  
Elliott Mortuary  
Hutchinson Chamber of  
Commerce & Visit Hutch

Hutchinson Community  
College  
Hyatt Life Sciences  
Instant Shine Cleaners  
KanEquip Inc.  
Kansas Corn Commission/  
Kansas Corn Growers Assn  
Kansas Electric  
Cooperatives

Kansas Fairs & Festivals  
Association  
Kansas Strong - Kansas Oil  
& Natural Gas Producers  
Kansas Wesleyan  
University  
Kool Cattle Shades  
Lutheran Laymens League  
Mel Hambelton Ford

MKC  
NCRA Productions  
Propane Marketers  
Association of Kansas  
Renoir  
Southwest Dairy Farmers  
Star Lumber & Leech  
Adhesives

## PARTNERS



Health & Safety Partner

## MEDIA PARTNERS

**PARKER  
MCCOLLUM**

KZSN IHEART  
KWCH

**GABRIEL "FLUFFY"  
IGLESIAS**

IHEART  
KWCH

**EDDIE  
MONTGOMERY**

EAGLE KHUT  
KSN

**TOBYMAC**

KSN

**GREAT WHITE  
& QUIET RIOT**

KFXJ  
KSN

**TI**

IHEART 96.3  
KWCH

**DIRT TRACK  
RACES**

MAAN  
KWCH

**DEMO  
DERBY**

AD ASTRA

# 2022

## KANSAS STATE FAIR

# SCHEDULE

We have a lot packed into the 10 days of the Fair: demonstrations, competitions, livestock shows, food, thrills, and more!

**SUBJECT TO CHANGE:** most current schedule available at  
[kansasstatefair.com](http://kansasstatefair.com)

### DAILY EVENTS

#### ALL DAY SEPT. 9-18

Dangerous Feats of Comedy | Fairgrounds

Max Power & Nitro | Fairgrounds

Wood Carving Demo | Domestic Arts Building

Llama Exhibit | Dairyland

Kansas Department of Wildlife & Parks Aquarium and Prairie Animals | Eisenhower Building

Butter Sculpture | Pride of Kansas

Agriland | Pride of Kansas

Construction Careers Alliance for Kansas | Ad Astra

FFA/4H Exhibit Displays | 4H Centennial Hall, Kansas Showcase

Competitive Exhibits Displays | Oz Gallery, Domestic Arts Building, Lake Talbott East, Lake Talbott West, Pride of Kansas Building

### FRIDAY, SEPT. 9

#### WELCOME BACK!

**We're excited to have you at the fair!**

**8:00 AM** Working Equitation Show | Expo II

**9:00 AM** Moo U - Guided Barn Tours | Birthing Center

**10:00 AM** Dr. Goddard's Lab | Education Ctr.

**10:00 AM** Glenda and Mike Ventriloquist and Magic Show | Lake Talbott

**10:00 AM** Hedrick's Pig Races | Bison Arena

**10:00 AM** Milking Demo | Milking Parlor

**11:00 AM** Dr. Goddard's Lab | Education Ctr.

**11:00 AM** Milking Demo | Milking Parlor

**11:00 AM** Opening Ceremony | Peoples Bank and Trust Arena

**11:30 AM** INSTEP | Lake Talbott Stage

**12:00 PM** Decorative Art Painting | Oz Gallery

**12:00 PM** Dr. Goddard's Lab | Education Ctr.

**12:00 PM** Draft Horse Show | Expo Center

**12:00 PM** Milking Demo | Milking Parlor

**12:00 PM** Tropical Shores Steel Drum Band | Peoples Bank and Trust Arena

**1:00 PM** Bread Sculpture Contest | Domestic Arts Building

**1:00 PM** Flying Fools High Diving Show | Gottschalk Park

**1:00 PM** Milking Demo | Milking Parlor

**1:00 PM** Ron Diamond Hypnotist | Peoples Bank and Trust Arena

**1:00 PM** Champion Livestock Show | Prairie Pavilion

**2:00 PM** 4H/FFA Swine Showmanship | Sheep, Swine and Goat Building

**2:00 PM** Cool Zoo Variety Show | Lake Talbott Stage

**2:00 PM** County Contest - Scarecrow Judging | Pride of Kansas Building

**2:00 PM** Dr. Goddard's Lab | Education Ctr.

**2:00 PM** Milking Demo | Milking Parlor

**2:00 PM** Moo U - Guided Barn Tours | Birthing Center

**2:00 PM** Sassanachs | Peoples Bank and Trust Arena

**2:30 PM** Hedrick's Pig Races | Bison Arena

**3:00 PM** 4H/FFA Sheep Showmanship | Sheep, Swine and Goat Building

**3:00 PM** Homemade Ice Cream & Topping Judging | Domestic Arts Building

**3:00 PM** INSTEP | Lake Talbott Stage

**3:30 PM** 4H/FFA Beef Showmanship | Prairie Pavilion

**4:00 PM** Cool Zoo Variety Show | Lake Talbott Stage

**4:00 PM** Fused Glass Demo | Oz Gallery

**4:00 PM** Hedrick's Pig Races | Bison Arena

**4:00 PM** Pompus Jack | Peoples Bank and Trust Arena

**5:00 PM** Alterior Motives | Lake Talbott Stage

**5:00 PM** Rock the Fair - Battle of the Bands | Nex-Tech Grandstand

**6:00 PM** Cool Zoo Variety Show | Lake Talbott Stage

**6:00 PM** Flying Fools High Diving Show | Gottschalk Park

**6:00 PM** Hedrick's Pig Races | Bison Arena

**6:00 PM** Milking Demo | Milking Parlor

**6:00 PM** Mutton Bustin' Championship | Expo II

**6:00 PM** Ron Diamond Hypnotist | Peoples Bank and Trust Arena

**7:00 PM** Alterior Motives | Lake Talbott Stage

**7:00 PM** Pompus Jack | Peoples Bank and Trust Arena



## SATURDAY, SEPT. 10

SPONSORED BY:



- 8:00 AM** Working Equitation Show | Expo II
- 8:00 AM** 4H/FFA Beef Market Show | Prairie Pavilion
- 8:00 AM** 4H/FFA Meat Goat Market Show | Livestock Annex
- 8:00 AM** 4H/FFA Sheep Show | Sheep, Swine and Goat Building
- 8:00 AM** 4H/FFA Swine Market Show | Sheep, Swine and Goat Building
- 9:00 AM** Moo U - Guided Barn Tours | Birthing Center
- 10:00 AM** Dr. Goddard's Lab | Education Ctr.
- 10:00 AM** Glenda and Mike Ventriloquist and Magic Show | Lake Talbott
- 10:00 AM** Hedrick's Pig Races | Bison Arena
- 10:00 AM** Milking Demo | Milking Parlor
- 10:00 AM** Draft Horse Show | Expo Center
- 10:00 AM** Honey Demonstrations | Pride of Kansas Building
- 10:30 AM** Down on the Farm-Author, Rosie Boose | Pride of Kansas Building
- 10:30 AM** WIBW Live - Governor's Debate | Peoples Bank and Trust Arena
- 11:00 AM** Dr. Goddard's Lab | Education Ctr.
- 11:00 AM** Flying Fools High Diving Show | Gottschalk Park
- 11:00 AM** Milking Demo | Milking Parlor
- 11:00 AM** Kansas Kountree Kloggers | Lake Talbott Stage
- 11:30 AM** Scouts Presentation | Oz Gallery
- 12:00 PM** Dr. Goddard's Lab | Education Ctr.
- 12:00 PM** Milking Demo | Milking Parlor
- 1:00 PM** Flying Fools High Diving Show | Gottschalk Park
- 1:00 PM** Milking Demo | Milking Parlor
- 1:00 PM** Ron Diamond Hypnotist | Peoples Bank and Trust Arena
- 1:00 PM** Butter Sculpture Contest | Pride of Kansas Building
- 1:00 PM** Celebrity Grape Stomp | Lake Talbott Stage
- 1:00 PM** Legislative Showmanship | Prairie Pavilion
- 1:30 PM** Pies, Pies, and More Pies Contest | Domestic Arts Building
- 2:00 PM** Cool Zoo Variety Show | Lake Talbott Stage
- 2:00 PM** Dr. Goddard's Lab | Education Ctr.
- 2:00 PM** Milking Demo | Milking Parlor

## GOTTSCHALK PARK FEATURE

# FLYING FOOLS

This high energy performance show consists of many dynamic dives. The acrobatic divers jump from heights of 10, 20, 30 and 80 feet with so much skill that it leaves you breathless. Especially since the pool is only 26 foot in diameter and only 10 feet deep!

The show offers serious and comical dives with one or more acrobats at a time, and up to five divers at once. It concludes with a performer climbing 80 ft. and diving into a tiny pool, while traveling at about 50 miles per hour when he hits the water!

*Sponsored by: Hutchinson Regional Healthcare System*

### SHOWTIMES:

**SEPT. 9** | 1:00 & 6:00 pm

**SEPT. 10 - 11** | 11:00am, 1:00, 3:00, 6:00 pm

**SEPT. 12 - 18** | 1:00, 3:00, 6:00 pm



- 2:00 PM** Moo U - Guided Barn Tours | Birthing Center
- 2:00 PM** The Agenda | Peoples Bank and Trust Arena
- 2:30 PM** Hedrick's Pig Races | Bison Arena
- 2:30 PM** 4H/FFA Commercial Heifer Show | Prairie Pavilion
- 3:00 PM** Flying Fools High Diving Show | Gottschalk Park
- 3:00 PM** Boom Box All 80's Band | Lake Talbott Stage
- 3:00 PM** Down on the Farm-Author, Rosie Boose | Pride of Kansas Building
- 4:00 PM** Cool Zoo Variety Show | Lake Talbott Stage
- 4:00 PM** Fused Glass Demo | Oz Gallery
- 4:00 PM** Hedrick's Pig Races | Bison Arena
- 4:00 PM** Draft Horse Pull Competition | Expo Center, Pride of Kansas Building
- 4:00 PM** Holy Cross Catholic Church Service | Encampment Bldg. - Hansen Auditorium
- 5:00 PM** Ron Diamond Hypnotist | Peoples Bank and Trust Arena
- 5:00 PM** Boom Box All 80's Band | Lake Talbott Stage
- 6:00 PM** Cool Zoo Variety Show | Lake Talbott Stage
- 6:00 PM** Flying Fools High Diving Show | Gottschalk Park
- 6:00 PM** Hedrick's Pig Races | Bison Arena

- 6:00 PM** Milking Demo | Milking Parlor
- 6:00 PM** 4H/FFA Grand Drive | Prairie Pavilion
- 6:00 PM** Keefer Madness | Peoples Bank and Trust Arena
- 7:00 PM** Boom Box All 80's Band | Lake Talbott Stage
- 7:30 PM** George Sanders Blues Band | Peoples Bank and Trust Arena
- 7:30 PM** Parker McCollum with Special Guest Priscilla Block | Nex-Tech Grandstand

Keep an eye out for our mascot, Ike the Bison, in his Key overalls! He'll be wondering around the Fair, always ready to pose for a picture!



## SUNDAY, SEPT. 11

SPONSORED BY:



- 8:00 AM** 4H/FFA Breeding Doe Show | Livestock Annex
- 8:00 AM** 4H/FFA Breeding Ewe Show | Sheep, Swine and Goat Building
- 8:00 AM** 4H/FFA Breeding Gilt Show | Sheep, Swine and Goat Building
- 8:00 AM** 4H/FFA Breeding Heifer | Prairie Pavilion
- 9:00 AM** 4-H Pigeons/Poultry | Poultry Building
- 9:00 AM** Moo U - Guided Barn Tours | Birthing Center
- 9:30 AM** Rub-A-Dub-Dub What's in the Tub? | Agricultural Exhibit Area
- 10:00 AM** Dr. Goddard's Lab | Education Ctr.
- 10:00 AM** Glenda and Mike Ventriloquist and Magic Show | Lake Talbott
- 10:00 AM** Hedrick's Pig Races | Bison Arena
- 10:00 AM** Milking Demo | Milking Parlor
- 10:00 AM** Draft Horse Show | Expo Center
- 10:00 AM** Honey Demonstrations | Pride of Kansas Building
- 10:00 AM** Red, White and Brew Contest | Encampment Bldg - Dillon Hall
- 10:00 AM** Sunday Worship - Lutheran Laymen's League | Peoples Bank and Trust Arena
- 11:00 AM** Dr. Goddard's Lab | Education Ctr.
- 11:00 AM** Flying Fools High Diving Show | Gottschalk Park
- 11:00 AM** Milking Demo | Milking Parlor
- 11:00 AM** Best Tasting Tomato Contest | Pride of Kansas Building
- 11:00 AM** Youth Favorite Cookie Contest | Domestic Arts Building, Pride of Kansas Bldg.
- 11:30 AM** Ragland | Lake Talbott Stage
- 11:30 AM** Rub-A-Dub-Dub What's in the Tub? | Agricultural Exhibit Area
- 12:00 PM** Dr. Goddard's Lab | Education Ctr.
- 12:00 PM** Milking Demo | Milking Parlor
- 12:30 PM** Tyler Byrd | Lake Talbott Stage
- 1:00 PM** Flying Fools High Diving Show | Gottschalk Park
- 1:00 PM** Milking Demo | Milking Parlor
- 1:00 PM** Artistic Drawing Skills | Oz Gallery, Outside Lots
- 1:00 PM** Pedal Pull Championships sponsored by Cellular Sales of KS | Peoples Bank and Trust Arena

- 1:00 PM** Quarter Horse Versatility Show | Expo II
- 1:30 PM** Stafford County Mill Biscuit Bake-Off | Domestic Arts Building
- 2:00 PM** Cool Zoo Variety Show | Lake Talbott Stage
- 2:00 PM** Dr. Goddard's Lab | Education Ctr.
- 2:00 PM** Milking Demo | Milking Parlor
- 2:00 PM** Moo U - Guided Barn Tours | Birthing Center
- 2:00 PM** Boy Scouts Presentation | Oz Gallery
- 2:00 PM** Rub-A-Dub-Dub What's in the Tub? | Agricultural Exhibit Area
- 2:30 PM** Hedrick's Pig Races | Bison Arena
- 3:00 PM** Flying Fools High Diving Show | Gottschalk Park
- 3:00 PM** Chad Boney Band | Lake Talbott Stage
- 4:00 PM** Cool Zoo Variety Show | Lake Talbott Stage
- 4:00 PM** Hedrick's Pig Races | Bison Arena
- 5:00 PM** Ron Diamond Hypnotist | Peoples Bank and Trust Arena
- 5:00 PM** 4-H Dairy Cattle Show | Prairie Pavilion, Dairyland
- 5:00 PM** Chad Boney Band | Lake Talbott Stage
- 5:00 PM** Dairy Cattle Show | Prairie Pavilion, Dairyland
- 6:00 PM** Cool Zoo Variety Show | Lake Talbott Stage

- 6:00 PM** Flying Fools High Diving Show | Gottschalk Park
- 6:00 PM** Hedrick's Pig Races | Bison Arena
- 6:00 PM** Milking Demo | Milking Parlor
- 6:00 PM** Tropical Shores Steel Drum Band | Peoples Bank and Trust Arena
- 6:30 PM** Rub-A-Dub-Dub What's in the Tub? | Agricultural Exhibit Area
- 7:00 PM** Sassanchs | Lake Talbott Stage
- 7:00 PM** Ron Diamond Hypnotist | Peoples Bank and Trust Arena
- 7:30 PM** Gabriel "Fluffy" Iglesias | Nex-Tech Grandstand

## MONDAY, SEPT. 12

SPONSORED BY:



### DILLONS DOLLAR DAY

**Gate admission is just \$1 or get in free with a Dillons Plus Card! One person admitted per card.**

**ALL DAY** Marching Band Competition in partnership w/ Kansas Wesleyan | Peoples Bank and Trust Arena

**9:00 AM** Moo U - Guided Barn Tours | Birthing Center

## PUBS & PUPS



### PUB CRAWL

*Sponsored by: Crosswinds Cassino*

This year the Kansas State Fair is hosting not just one, but TWO official Pub Crawls. These Pub Crawls are themed in correlation with Nex-Tech Grandstand performances. The My Town Pub Crawl is paired with Eddie Montgomery on Tuesday, Sept. 13. The Pub Rockers are crawling around the fair on Thursday, Sept. 15, the night of Great White and Quiet Riot.

Go to [kansasstatefair.com](http://kansasstatefair.com) and click Participate to purchase your Pub Crawl punch card and complimentary t-shirt.



### PRONTO PUP EATING CONTEST

*Sponsored by: D&J Pronto Pup*

Here's an excuse to eat all the Pronto Pups you physically can in 10 minutes. And we're giving out awesome prizes! Contestants receive a T-shirt and all the Pronto Pups you can eat. Don't want to participate? Come down and watch the action!

To enter go to [kansasstatefair.com](http://kansasstatefair.com) and click on Participate.

**SUNDAY, SEPT. 18 | 12:00 P.M.** at Peoples Bank and Trust Arena.



*back by*  
**POPULAR DEMAND**

**THE STROLLING PIANO**



A revolutionary concept in the world of musical entertainment, this Fair act combines the classic sophisticated nature of a pianist/singer with the flexibility of a strolling musician.

**15% OFF**

ONE (1) REGULAR PRICED H-D Licensed Product  
9/9/2022 to 10/9/2022

**WISTER CITY**  
**HARLEY-DAVIDSON**

5427 CHUZY DR, WICHITA, KS 67219  
(316) 440-5700 I-135 & 53RD ST N.

\*VALID IN MOTORCLOTHES & PARTS DEPARTMENT ONLY. SOME RESTRICTIONS MAY APPLY. SEE STORE FOR DETAILS.

**9:00 AM** Electricity and Electrical Safety Demonstration | Ad Astra Bldg.  
**9:00 AM** Blue Cross Blue Shield of Kansas Medicare at the Fair | Encampment Bldg - Dillon Hall  
**9:00 AM** Mounted Shooters | Expo II  
**9:00 AM** Quarter Horse Versatility Show | Expo Center  
**9:30 AM** Rub-A-Dub-Dub What's in the Tub? | Agricultural Exhibit Area  
**10:00 AM** Dr. Goddard's Lab | Education Ctr.  
**10:00 AM** Glenda and Mike Ventriloquist and Magic Show | Lake Talbott  
**10:00 AM** Hedrick's Pig Races | Bison Arena  
**10:00 AM** Milking Demo | Milking Parlor  
**10:00 AM** Honey Demonstrations | Pride of Kansas Building  
**10:00 AM** State Fair Promenaders Square Dance Club | Oz Gallery  
**11:00 AM** Dr. Goddard's Lab | Education Ctr.  
**11:00 AM** Milking Demo | Milking Parlor  
**11:00 AM** Tabletop Soil Demonstration | Pride of Kansas Building  
**11:15 AM** Mounted Shooters | Expo II  
**11:30 AM** Rub-A-Dub-Dub What's in the Tub? | Agricultural Exhibit Area  
**12:00 PM** Dr. Goddard's Lab | Education Ctr.  
**12:00 PM** Milking Demo | Milking Parlor  
**12:00 PM** Hyway 14 | Lake Talbott Stage  
**1:00 PM** Flying Fools High Diving Show | Gottschalk Park  
**1:00 PM** Milking Demo | Milking Parlor  
**1:00 PM** Absolutely Flowers Demonstration | Pride of Kansas Building  
**1:00 PM** Drink Mate - Demonstration by Apron Strings | Domestic Arts Building  
**1:30 PM** Mounted Shooters | Expo II  
**2:00 PM** Cool Zoo Variety Show | Lake Talbott Stage

**2:00 PM** Dr. Goddard's Lab | Education Ctr.  
**2:00 PM** Milking Demo | Milking Parlor  
**2:00 PM** Moo U - Guided Barn Tours | Birthing Center  
**2:00 PM** Rub-A-Dub-Dub What's in the Tub? | Agricultural Exhibit Area  
**2:00 PM** INSTEP | Peoples Bank and Trust Arena  
**2:00 PM** Tabletop Soil Demonstration | Pride of Kansas Building  
**2:30 PM** Hedrick's Pig Races | Bison Arena  
**3:00 PM** Flying Fools High Diving Show | Gottschalk Park  
**3:00 PM** Hyway 14 | Lake Talbott Stage  
**4:00 PM** Cool Zoo Variety Show | Lake Talbott Stage  
**4:00 PM** Hedrick's Pig Races | Bison Arena  
**4:00 PM** Ron Diamond Hypnotist | Peoples Bank and Trust Arena  
**4:00 PM** Absolutely Flowers Demonstration | Pride of Kansas Building  
**4:00 PM** Fused Glass Demo | Oz Gallery  
**5:00 PM** INSTEP | Lake Talbott Stage  
**5:00 PM** Broderick Jones | Peoples Bank and Trust Arena  
**5:00 PM** Kansas Dairy Demonstration | Domestic Arts Building  
**6:00 PM** Cool Zoo Variety Show | Lake Talbott Stage  
**6:00 PM** Flying Fools High Diving Show | Gottschalk Park  
**6:00 PM** Hedrick's Pig Races | Bison Arena  
**6:00 PM** Milking Demo | Milking Parlor  
**6:30 PM** Rub-A-Dub-Dub What's in the Tub? | Agricultural Exhibit Area  
**7:00 PM** Ron Diamond Hypnotist | Peoples Bank and Trust Arena  
**7:00 PM** Adam Thomas Band | Lake Talbott Stage  
**7:30 PM** Demo Derby | Nex-Tech Grandstand

**TUESDAY, SEPT. 13**

**SPONSORED BY:**

**DIRECTV**

**TASTY TUESDAY**

**\$2.00 concessions at participating vendors! Pick up a flyer at the gate.**

**4 AFTER 4**

**Get in for \$4 after 4 P.M. with this evening deal!**

**ALL DAY** Marching Band Competition in partnership w/ Kansas Wesleyan | Peoples Bank and Trust Arena  
**9:00 AM** Moo U - Guided Barn Tours | Birthing Center  
**9:00 AM** Electricity and Electrical Safety Demonstration | Ad Astra Bldg.  
**9:00 AM** Debate Showcase sponsored by Kansas Wesleyan | Encampment Bldg. - Hansen Auditorium  
**9:00 AM** Miniature Horse Show | Expo II  
**9:00 AM** Professional Art Exhibits | Lake Talbott East  
**9:30 AM** Rub-A-Dub-Dub What's in the Tub? | Agricultural Exhibit Area  
**9:30 AM** Boer Goat Show | Sheep, Swine and Goat Building  
**10:00 AM** Dr. Goddard's Lab | Education Ctr.  
**10:00 AM** Glenda and Mike Ventriloquist and Magic Show | Lake Talbott  
**10:00 AM** Hedrick's Pig Races | Bison Arena  
**10:00 AM** Milking Demo | Milking Parlor  
**10:00 AM** Honey Demonstrations | Pride of Kansas Building  
**10:00 AM** Perfect Pie Crust Demonstration by Sandy Brooks | Domestic Arts Building  
**11:00 AM** Dr. Goddard's Lab | Education Ctr.

**11:00 AM** Milking Demo | Milking Parlor  
**11:30 AM** Rub-A-Dub-Dub What's in the Tub? | Agricultural Exhibit Area  
**11:30 AM** Healthy Heart Demonstration | Domestic Arts Building  
**12:00 PM** Dr. Goddard's Lab | Education Ctr.  
**12:00 PM** Milking Demo | Milking Parlor  
**12:00 PM** Tropical Shores Steel Drum Band | Peoples Bank and Trust Arena  
**12:00 PM** Fun Crafting | Oz Gallery  
**12:00 PM** Glenn - Roth | Lake Talbott Stage  
**12:00 PM** Invent a Heart Healthy Food Contest | Domestic Arts Building  
**1:00 PM** Flying Fools High Diving Show | Gottschalk Park  
**1:00 PM** Milking Demo | Milking Parlor  
**1:00 PM** INSTEP | Peoples Bank and Trust Arena  
**1:00 PM** Harmony Hill | Lake Talbott Stage  
**2:00 PM** Cool Zoo Variety Show | Lake Talbott Stage  
**2:00 PM** Dr. Goddard's Lab | Education Ctr.  
**2:00 PM** Milking Demo | Milking Parlor  
**2:00 PM** Moo U - Guided Barn Tours | Birthing Center  
**2:00 PM** Rub-A-Dub-Dub What's in the Tub? | Agricultural Exhibit Area  
**2:30 PM** Hedrick's Pig Races | Bison Arena  
**3:00 PM** Flying Fools High Diving Show | Gottschalk Park  
**3:00 PM** Harmony Hill | Lake Talbott Stage  
**3:00 PM** Jazzing Up The Arena - Salt City Jazz Band | Peoples Bank and Trust Arena  
**4:00 PM** Cool Zoo Variety Show | Lake Talbott Stage  
**4:00 PM** Hedrick's Pig Races | Bison Arena  
**4:00 PM** My Town Pub Crawl | Fairgrounds  
**5:00 PM** Dixieland Band | Peoples Bank and Trust Arena  
**5:00 PM** Glenn - Roth | Lake Talbott Stage  
**6:00 PM** Cool Zoo Variety Show | Lake Talbott Stage  
**6:00 PM** Flying Fools High Diving Show | Gottschalk Park  
**6:00 PM** Hedrick's Pig Races | Bison Arena  
**6:00 PM** Milking Demo | Milking Parlor  
**6:00 PM** Kansas All Star Educators Big Band | Peoples Bank and Trust Arena  
**6:30 PM** Rub-A-Dub-Dub What's in the Tub? | Agricultural Exhibit Area  
**7:00 PM** Tysie Gypsies | Lake Talbott Stage  
**7:30 PM** Eddie Montgomery of Montgomery Gentry | Nex-Tech Grandstand

## WEDNESDAY, SEPT. 14

### SPONSORED BY:



### SHOP 'TIL YOU DROP

Participating vendors are offering discounts on selected merchandise. Pick up a flyer at the gate!

**ALL DAY** Marching Band Competition in partnership w/ Kansas Wesleyan | Peoples Bank and Trust Arena  
**9:00 AM** Moo U - Guided Barn Tours | Birthing Center  
**9:00 AM** Electricity and Electrical Safety Demonstration | Ad Astra Bldg.  
**9:00 AM** Dog Demo Day | Expo Center  
**9:00 AM** Veteran's/Military Appreciation Breakfast sponsored by DISH - USA Expo | Encampment Bldg - Dillon Hall  
**9:00 AM** Woodcarving | Oz Gallery  
**9:30 AM** Rub-A-Dub-Dub What's in the Tub? | Agricultural Exhibit Area  
**10:00 AM** Dr. Goddard's Lab | Education Ctr.  
**10:00 AM** Glenda and Mike Ventriloquist and Magic Show | Lake Talbott  
**10:00 AM** Hedrick's Pig Races | Bison Arena  
**10:00 AM** Milking Demo | Milking Parlor  
**10:00 AM** Honey Demonstrations | Pride of Kansas Building  
**10:00 AM** American Freedom Riders Demos | Expo Center , Expo II  
**10:00 AM** Open Sheep Show | Sheep, Swine and Goat Building, Scout Buildings  
**11:00 AM** Dr. Goddard's Lab | Education Ctr.  
**11:00 AM** Milking Demo | Milking Parlor  
**11:00 AM** Board and Brush Demonstration | Oz Gallery  
**11:00 AM** Prepare a Meal with Tupperware | Domestic Arts Building  
**11:30 AM** Rub-A-Dub-Dub What's in the Tub? | Agricultural Exhibit Area  
**11:30 AM** Nickerson High School Madrigals | Lake Talbott Stage  
**12:00 PM** Dr. Goddard's Lab | Education Ctr.  
**12:00 PM** Milking Demo | Milking Parlor  
**1:00 PM** Flying Fools High Diving Show | Gottschalk Park  
**1:00 PM** Milking Demo | Milking Parlor  
**1:00 PM** American Freedom Riders Demos | Expo Center , Expo II

**1:00 PM** King Arthur Spice Cake Contest | Domestic Arts Building  
**1:00 PM** Nina Jerke & Helen Loss | Lake Talbott Stage  
**1:00 PM** Super Cow/Calf Show | Livestock Annex  
**2:00 PM** Cool Zoo Variety Show | Lake Talbott Stage  
**2:00 PM** Dr. Goddard's Lab | Education Ctr.  
**2:00 PM** Milking Demo | Milking Parlor  
**2:00 PM** Moo U - Guided Barn Tours | Birthing Center  
**2:00 PM** Rub-A-Dub-Dub What's in the Tub? | Agricultural Exhibit Area  
**2:00 PM** Flower Arranging 11 - Don's Custom Floral | Pride of Kansas Building  
**2:00 PM** Kansas Auctioneers Association Bid Calling Contest | Peoples Bank and Trust Arena  
**2:30 PM** Hedrick's Pig Races | Bison Arena  
**3:00 PM** Flying Fools High Diving Show | Gottschalk Park  
**3:00 PM** Kansas State Fair Bingo | Cottonwood Court - Friendly Bingo Palace  
**3:00 PM** Nina Jerke & Helen Loss | Lake Talbott Stage  
**4:00 PM** Cool Zoo Variety Show | Lake Talbott Stage  
**4:00 PM** Hedrick's Pig Races | Bison Arena  
**5:00 PM** Ron Diamond Hypnotist | Peoples Bank and Trust Arena  
**5:00 PM** American Freedom Riders Demos | Expo Center , Expo II  
**5:00 PM** Mini Garden Vote Count | Pride of Kansas Building  
**5:00 PM** Prepare a Meal with Tupperware | Domestic Arts Building  
**5:00 PM** INSTEP | Lake Talbott Stage  
**6:00 PM** Flying Fools High Diving Show | Gottschalk Park  
**6:00 PM** Hedrick's Pig Races | Bison Arena  
**6:00 PM** Milking Demo | Milking Parlor  
**6:00 PM** Buhler Singers | Peoples Bank and Trust Arena  
**6:30 PM** Rub-A-Dub-Dub What's in the Tub? | Agricultural Exhibit Area  
**7:00 PM** Ron Diamond Hypnotist | Peoples Bank and Trust Arena  
**7:00 PM** Steel Skarecrow | Lake Talbott Stage  
**7:00 PM** American Freedom Riders Demos | Expo Center , Expo II  
**7:30 PM** TobyMac | Nex-Tech Grandstand





facebook.com/BonnerSpringsKansas



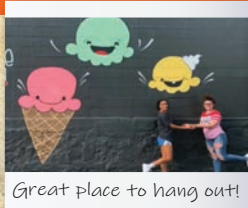
@BonnerSpringsKS



Whether you're looking for a thrilling adventure or just a quaint getaway, Bonner Springs has options for everyone!



What a thrill!



Great place to hang out!



Kids had a blast!

## NEARBY ATTRACTIONS

- Hollywood Casino • Power & Light District • Kansas Speedway
- Sporting Kansas City Stadium • Kansas City Chiefs & Royals Stadiums
- Kansas City Zoo • T-Mobile Center • Legends Outlets of Kansas City
- World War I Museum & Liberty Memorial
- Nelson-Atkins Museum of Art • Worlds of Fun/Oceans of Fun

Plan Your Trip!  
BonnerSprings.org/visit



Bonner Springs  
KANSAS

# THE SIDE OF KANSAS CITY

YOU MAY NOT KNOW

- See** Kansas City, KS from the eyes of Lewis and Clark.
- Admire** the Victorian homes in Strawberry Hill.
- Uncover** historic Kansans at Legends Outlets Kansas City.
- Discover** the story of KCK you may not know.

VisitKansasCityKS.com



# EXPLORE OLATHE

YOUR ADVENTURE BEGINS AT  
VISITOLATHE.ORG | 913.674.1050



# Merriam KANSAS



Come for a few hours  
or spend the day –  
and Kansas City's  
just minutes away!

exploremerriam.com





## THURSDAY, SEPT. 15

### SPONSORED BY:



### YOUNG AT HEART DAY

Gate admission is \$2 for seniors 55 and older.

- 9:00 AM** Moo U - Guided Barn Tours | Birthing Center
- 9:00 AM** Forensics Showcase | Encampment Bldg. - Hansen Auditorium
- 9:00 AM** Open Beef Cattle | Prairie Pavilion
- 9:00 AM** Open Sheep Show | Sheep, Swine and Goat Building
- 9:00 AM** Watusi Display | Livestock Annex
- 9:30 AM** Rub-A-Dub-Dub What's in the Tub? | Agricultural Exhibit Area
- 10:00 AM** Dr. Goddard's Lab | Education Ctr.
- 10:00 AM** Glenda and Mike Ventriloquist and Magic Show | Lake Talbott

- 10:00 AM** 4Given | Peoples Bank and Trust Arena
- 10:00 AM** Hedrick's Pig Races | Bison Arena
- 10:00 AM** Milking Demo | Milking Parlor
- 10:00 AM** Honey Demonstrations | Pride of Kansas Building
- 10:00 AM** China Painters | Oz Gallery
- 11:00 AM** Dr. Goddard's Lab | Education Ctr.
- 11:00 AM** Milking Demo | Milking Parlor
- 11:00 AM** Air Fryer Demonstration | Domestic Arts Building
- 11:00 AM** Damaris Kunkler | Lake Talbott Stage
- 11:30 AM** Rub-A-Dub-Dub What's in the Tub? | Agricultural Exhibit Area
- 12:00 PM** Dr. Goddard's Lab | Education Ctr.
- 12:00 PM** Milking Demo | Milking Parlor
- 12:00 PM** Damaris Kunkler | Lake Talbott Stage
- 12:00 PM** Tawna Goforth | Peoples Bank and Trust Arena
- 1:00 PM** Flying Fools High Diving Show | Gottschalk Park
- 1:00 PM** Milking Demo | Milking Parlor
- 1:00 PM** Jenna & Martin | Lake Talbott Stage
- 2:00 PM** Cool Zoo Variety Show | Lake Talbott Stage

- 2:00 PM** Dr. Goddard's Lab | Education Ctr.
- 2:00 PM** Milking Demo | Milking Parlor
- 2:00 PM** Moo U - Guided Barn Tours | Birthing Center
- 2:00 PM** Rub-A-Dub-Dub What's in the Tub? | Agricultural Exhibit Area
- 2:00 PM** 4-H Horse Show | Expo Center, Expo II
- 2:00 PM** 4-H Horse Show | Expo Center, Expo II
- 2:00 PM** Brady Lee | Peoples Bank and Trust Arena
- 2:00 PM** Kansas State Fair Bingo | Encampment Bldg - Dillon Hall
- 2:30 PM** Hedrick's Pig Races | Bison Arena
- 2:30 PM** Cake Decorating Demonstration by Holly's Sweet Treats | Domestic Arts Building
- 3:00 PM** Flying Fools High Diving Show | Gottschalk Park
- 3:00 PM** Jenna & Martin | Lake Talbott Stage
- 4:00 PM** Cool Zoo Variety Show | Lake Talbott Stage
- 4:00 PM** Hedrick's Pig Races | Bison Arena
- 4:00 PM** Brady Lee | Peoples Bank and Trust Arena
- 4:00 PM** Pub Rockers Pub Crawl | Fairgrounds

MANUFACTURED BY BURLINGTON WELDING, LLC

**Diamond w Corrals**

# SORT CATTLE The Easy Way

(PATENT PENDING) COW CALF CORRAL  
W/ OPTIONAL EXPANDER WINGS

**CALL (580) 596-3381**

or visit [diamondwcorrals.com/dealer-locator/](http://diamondwcorrals.com/dealer-locator/)  
to find a dealer near you!

# DNA

Dedicated Nursing Associates, Inc.



**Now Hiring Per Diem & Travel Nurses**

RNs

**\$91**

Per Hr\*

LPNs

**\$69**

Per Hr\*

CNAs

**\$41**

Per Hr\*

HHAs

**\$25**

Per Hr\*

\*Rates vary per location.

**DEDICATEDNURSES.COM**  
**(800) 256-9426**



DEDICATEDNURSES



DEDICATEDNURSES



DEDICATEDNURSINGASSOCIATES





**5:00 PM** Cool Zoo Variety Show | Lake Talbott Stage

**6:00 PM** Flying Fools High Diving Show | Gottschalk Park

**6:00 PM** Hedrick's Pig Races | Bison Arena

**6:00 PM** Milking Demo | Milking Parlor

**6:00 PM** PopSkull Rebels | Peoples Bank and Trust Arena

**6:00 PM** We are Branches | Lake Talbott Stage

**6:00 PM** Why Build an Insect Hotel - Demonstration | Pride of Kansas Building

**6:30 PM** Rub-A-Dub-Dub What's in the Tub? | Agricultural Exhibit Area

**7:30 PM** Great White & Quiet Riot | Nex-Tech Grandstand

## FRIDAY, SEPT. 16

### SPONSORED BY:



### CHIEFS RED FRIDAY

Gate admission is \$2 for members of the PlayOn app.

**8:00 AM** 4-H Horse Show | Expo Center , Expo II

**8:00 AM** 4-H Horse Show | Expo Center , Expo II

**9:00 AM** 4-H Pigeons/Poultry | Poultry Building

**9:00 AM** Moo U - Guided Barn Tours | Birthing Center

**9:00 AM** Electricity and Electrical Safety Demonstration | Ad Astra Bldg.

**9:00 AM** Open Beef Cattle | Prairie Pavilion

**9:00 AM** Watusi Display | Livestock Annex

**9:00 AM** Blue Cross Blue Shield of Kansas Medicare at the Fair | Encampment Bldg - Dillon Hall

**9:00 AM** Professional Art Exhibits | Lake Talbott West, Lake Talbott East

**9:30 AM** Rub-A-Dub-Dub What's in the Tub? | Agricultural Exhibit Area

**10:00 AM** Tropical Shores Steel Drum Band | Peoples Bank and Trust Arena

**10:00 AM** Dr. Goddard's Lab | Education Ctr.

**10:00 AM** Glenda and Mike Ventriloquist and Magic Show | Lake Talbott

**10:00 AM** Hedrick's Pig Races | Bison Arena

**10:00 AM** Milking Demo | Milking Parlor

**10:00 AM** Honey Demonstrations | Pride of Kansas Building

**11:00 AM** Dr. Goddard's Lab | Education Ctr.

**11:00 AM** Flying Fools High Diving Show | Gottschalk Park

**11:00 AM** Milking Demo | Milking Parlor

**11:30 AM** Rub-A-Dub-Dub What's in the Tub? | Agricultural Exhibit Area

**12:00 PM** Dr. Goddard's Lab | Education Ctr.

**12:00 PM** Milking Demo | Milking Parlor

**12:00 PM** Decorative Art Painting | Oz Gallery

**12:00 PM** Fresh Salsa Contest | Domestic Arts Building

**12:00 PM** Tysie Gypsies | Peoples Bank and Trust Arena

**12:30 PM** Dairy Cattle Show | Prairie Pavilion, Dairyland

**1:00 PM** Flying Fools High Diving Show | Gottschalk Park

**1:00 PM** Milking Demo | Milking Parlor

**1:00 PM** Ruby | Lake Talbott Stage

**2:00 PM** Cool Zoo Variety Show | Lake Talbott Stage

**2:00 PM** Dr. Goddard's Lab | Education Ctr.

**2:00 PM** Milking Demo | Milking Parlor

**2:00 PM** Moo U - Guided Barn Tours | Birthing Center

**2:00 PM** Rub-A-Dub-Dub What's in the Tub? | Agricultural Exhibit Area

**2:00 PM** Sherwin & Pam Linton - The Johnny Cash Story | Peoples Bank and Trust Arena

**2:30 PM** Hedrick's Pig Races | Bison Arena

**3:00 PM** Flying Fools High Diving Show | Gottschalk Park

**3:00 PM** Celebrity Goat Milking | Sheep, Swine and Goat Building

**3:00 PM** Open Swine Show | Sheep, Swine and Goat Building

**3:00 PM** Ruby | Lake Talbott Stage

**3:30 PM** Curley's All Natural BBQ Sauce Contest | Domestic Arts Building

**4:00 PM** Cool Zoo Variety Show | Lake Talbott Stage

**4:00 PM** Hedrick's Pig Races | Bison Arena

**4:00 PM** Ron Diamond Hypnotist | Peoples Bank and Trust Arena

**5:00 PM** Cool Zoo Variety Show | Lake Talbott Stage

**5:00 PM** 4-H Dairy Cattle Showmanship | Prairie Pavilion, Dairyland

**5:00 PM** Kansas Dairy Demonstration | Domestic Arts Building

**5:30 PM** Steel Skarecrow | Peoples Bank and Trust Arena

**6:00 PM** Flying Fools High Diving Show | Gottschalk Park

**6:00 PM** Hedrick's Pig Races | Bison Arena

**6:00 PM** Milking Demo | Milking Parlor

**6:00 PM** Flatland | Lake Talbott Stage

**6:30 PM** Rub-A-Dub-Dub What's in the Tub? | Agricultural Exhibit Area

**7:00 PM** Ron Diamond Hypnotist | Peoples Bank and Trust Arena

**7:00 PM** Tech N9ne with Blane Howard - Kansas Lottery Chiefs Red Friday Pre-Concert Rally with KC Wolf & Chiefs Rumble Drumline | Nex-Tech Grandstand



## SATURDAY, SEPT. 17

### SPONSORED BY:



**ALL DAY** Explore Kansas | Across from Domestic Arts Bldg.

**8:00 AM** 4-H Dairy Goat Show | Sheep, Swine and Goat Building

**8:00 AM** 4-H Horse Show | Expo II , Education Ctr.

**8:00 AM** 4-H Horse Show | Expo Center , Expo II

**8:30 AM** Roy Coffey Antique Farm Machinery Show | Administration Building Parking Lot

**9:00 AM** Moo U - Guided Barn Tours | Birthing Center

**9:00 AM** Open Beef Cattle | Prairie Pavilion

**9:00 AM** Watusi Display | Livestock Annex

**9:00 AM** Open Swine Show | Sheep, Swine and Goat Building

**9:30 AM** Rub-A-Dub-Dub What's in the Tub? | Agricultural Exhibit Area

**10:00 AM** Dr. Goddard's Lab | Education Ctr.  
**10:00 AM** Glenda and Mike Ventriloquist and Magic Show | Lake Talbott  
**10:00 AM** Hedrick's Pig Races | Bison Arena  
**10:00 AM** Milking Demo | Milking Parlor  
**10:00 AM** Honey Demonstrations | Pride of Kansas Building  
**10:00 AM** Manhattan High School Pops Choir | Peoples Bank and Trust Arena  
**10:30 AM** All About Yak Meat | Domestic Arts Building  
**11:00 AM** Dr. Goddard's Lab | Education Ctr.  
**11:00 AM** Flying Fools High Diving Show | Gottschalk Park  
**11:00 AM** Milking Demo | Milking Parlor  
**11:00 AM** Cheesecake Contest | Domestic Arts Building  
**11:00 AM** Watusi Show | Livestock Annex  
**11:30 AM** Rub-A-Dub-Dub What's in the Tub? | Agricultural Exhibit Area  
**11:30 AM** Midwest Hemp Tech Talks | Pride of Kansas Building  
**12:00 PM** Dr. Goddard's Lab | Education Ctr.  
**12:00 PM** Milking Demo | Milking Parlor  
**12:00 PM** Flatland | Lake Talbott Stage  
**12:00 PM** Sherwin & Pam Linton - The Johnny Cash Story | Peoples Bank and Trust Arena



**1:00 PM** Flying Fools High Diving Show | Gottschalk Park  
**1:00 PM** Milking Demo | Milking Parlor  
**1:00 PM** Best Jerky Contest | Domestic Arts Building  
**1:00 PM** Corn Husking Contest | Pride of Kansas Building  
**1:00 PM** Llama Show | Expo II  
**2:00 PM** Cool Zoo Variety Show | Lake Talbott Stage  
**2:00 PM** Dr. Goddard's Lab | Education Ctr.  
**2:00 PM** Milking Demo | Milking Parlor

**2:00 PM** Moo U - Guided Barn Tours | Birthing Center  
**2:00 PM** Ron Diamond Hypnotist | Peoples Bank and Trust Arena  
**2:00 PM** Rub-A-Dub-Dub What's in the Tub? | Agricultural Exhibit Area  
**2:00 PM** Midwest Hemp Tech Talks | Pride of Kansas Building  
**2:00 PM** Open Dairy Goat | Sheep, Swine and Goat Building  
**2:30 PM** Hedrick's Pig Races | Bison Arena  
**3:00 PM** Flying Fools High Diving Show | Gottschalk Park  
**3:00 PM** All About Yak Meat | Domestic Arts Building  
**3:00 PM** Wheat State Revival | Lake Talbott Stage  
**3:00 PM** Wild Horse Youth Mustang Challenge | Expo Center  
**4:00 PM** Cool Zoo Variety Show | Lake Talbott Stage  
**4:00 PM** Hedrick's Pig Races | Bison Arena  
**4:00 PM** Woodcarver's Auction | Peoples Bank and Trust Arena  
**5:00 PM** Wheat State Revival | Lake Talbott Stage  
**5:30 PM** Ron Diamond Hypnotist | Peoples Bank and Trust Arena  
**6:00 PM** Cool Zoo Variety Show | Lake Talbott Stage  
**6:00 PM** Flying Fools High Diving Show | Gottschalk Park  
**6:00 PM** Hedrick's Pig Races | Bison Arena  
**6:00 PM** Milking Demo | Milking Parlor  
**6:30 PM** Rub-A-Dub-Dub What's in the Tub? | Agricultural Exhibit Area  
**7:00 PM** Ron Diamond Hypnotist | Peoples Bank and Trust Arena  
**7:00 PM** Ryan Shaban | Lake Talbott Stage  
**7:30 PM** T.I. with Chingy | Nex-Tech Grandstand

## SUNDAY, SEPT. 18

### SPONSORED BY:



**ALL DAY** Explore Kansas | Across from Domestic Arts Bldg.  
**9:00 AM** Moo U - Guided Barn Tours | Birthing Center  
**9:30 AM** Rub-A-Dub-Dub What's in the Tub? | Agricultural Exhibit Area  
**10:00 AM** Tropical Shores Steel Drum Band | Peoples Bank and Trust Arena  
**10:00 AM** Dr. Goddard's Lab | Education Ctr.

**10:00 AM** Glenda and Mike Ventriloquist and Magic Show | Lake Talbott  
**10:00 AM** Hedrick's Pig Races | Bison Arena  
**10:00 AM** Milking Demo | Milking Parlor  
**10:00 AM** Honey Demonstrations | Pride of Kansas Building  
**10:00 AM** Woodworkers/Woodturners | Oz Gallery, Outside Lots  
**11:00 AM** Dr. Goddard's Lab | Education Ctr.  
**11:00 AM** Flying Fools High Diving Show | Gottschalk Park  
**11:00 AM** Milking Demo | Milking Parlor  
**11:00 AM** Learn to Grow Fruit Trees | Pride of Kansas Building, PRIDE OF KANSAS - SPI  
**11:00 AM** Once Saved | Lake Talbott Stage  
**11:30 AM** Rub-A-Dub-Dub What's in the Tub? | Agricultural Exhibit Area  
**12:00 PM** Cool Zoo Variety Show | Lake Talbott Stage  
**12:00 PM** Dr. Goddard's Lab | Education Ctr.  
**12:00 PM** Milking Demo | Milking Parlor  
**12:00 PM** Pronto Pup Eating Contest | Peoples Bank and Trust Arena  
**1:00 PM** Flying Fools High Diving Show | Gottschalk Park  
**1:00 PM** Milking Demo | Milking Parlor  
**1:00 PM** Ron Diamond Hypnotist | Peoples Bank and Trust Arena  
**1:00 PM** Artistic Drawing Skills | Oz Gallery  
**1:00 PM** Easy Chinese Meal Demo | Domestic Arts Building  
**1:00 PM** Learn to Grow Fruit Trees | Pride of Kansas Building  
**1:00 PM** Once Saved | Lake Talbott Stage  
**2:00 PM** Dr. Goddard's Lab | Education Ctr.  
**2:00 PM** Milking Demo | Milking Parlor  
**2:00 PM** Moo U - Guided Barn Tours | Birthing Center  
**2:00 PM** Tropical Shores Steel Drum Band | Peoples Bank and Trust Arena  
**2:00 PM** Rub-A-Dub-Dub What's in the Tub? | Agricultural Exhibit Area  
**2:00 PM** AUSA Kansas Arm Wrestling Championships "The Event" | Lake Talbott Stage  
**2:30 PM** Hedrick's Pig Races | Bison Arena  
**3:00 PM** Flying Fools High Diving Show | Gottschalk Park  
**3:00 PM** Ron Diamond Hypnotist | Peoples Bank and Trust Arena  
**3:00 PM** Learn to Grow Fruit Trees | Pride of Kansas Building  
**4:00 PM** Hedrick's Pig Races | Bison Arena  
**5:00 PM** Cool Zoo Variety Show | Lake Talbott Stage  
**6:00 PM** Flying Fools High Diving Show | Gottschalk Park  
**6:00 PM** Hedrick's Pig Races | Bison Arena



JOIN US AT

# IDEATEK'S INTERNET CAFE

Come chill out at IdeaTek's  
Internet Cafe located across from  
the Domestic Arts Building

*(at the corner of Cottonwood Ave. and Cottonwood Terrace)*



PUBLIC WIFI, SEATING, PRIZES, AIR CONDITIONED  
**ALL FREE!**

SCAN TO LEARN MORE ABOUT IDEATEK SERVICE >



Ideatek.com | 855-433-2835



# We are community

---

We're your local, hometown partner for crop, livestock, land, machinery and equipment financing.

**Ask us how we can help you.**

**Connect with us.**

Locations across Kansas.

**855.226.5722 | [RCBbank.com](http://RCBbank.com)**



Restrictions, limitations and conditions apply for all loan types with approved credit. NMLS #798151.

# RCB BANK

*That's my bank!*

MEMBER FDIC