

CLOTHING & TEXTILES

Manager: Kathy Petz 620-694-4057
Email: kathypetz@sbcglobal.net

LOCATION: Domestic Arts Building

Changes have been made in the General and Department Rules. Please read all the rules.

Online entry available May 1, 2024

ENTRY DEADLINE IS AUGUST 1, 2024

- All entries are required to be completed online.
If you need assistance with entry, please contact the Fair Office.
Please check the receiving schedule.

August 2 (12:01 a.m.) to August 15 (11:59 p.m.) - \$5.00 late fee, per exhibitor.

August 16 (12:01 a.m.) to August 20 (11:59 p.m.) - \$25.00 late fee, per exhibitor.

No entries will be accepted after August 20 (11:59 p.m.)

**Clothing/Textile Receiving Times: Thursday, August 22, Noon – 8 p.m.
Friday, August 23, 11 a.m. to 6 p.m.
Saturday, August 24, 9 a.m. to Noon**

**Release Times (Pick-up): Sunday, September 15, 6 p.m. to 8:00 p.m.
Monday, September 16, 9 a.m. to 1:00 p.m.**

Exhibitor Social Security Numbers ARE REQUIRED. The KSF is a State entity, and the State of Kansas requires the SSN for verification of premium payments.

GENERAL AND DEPARTMENTAL RULES

- DEADLINE DATES:** All exhibitors are required to submit their entries online by the deadline date of **August 1, 2024**. Assistance for online entries is available during regular business hours only. (Monday – Friday, 8:00 a.m. to 5:00 p.m.) by calling the competitive office at 620-669-3621.
- REQUIRED EXHIBITOR FEES:** ALL exhibitors are required to pay a \$1.00 processing fee per person as well as a \$1.00 per item entry fee.
- ENTRIES/LATE ENTRIES:** Entries will be accepted online at www.kansasstatefair.com, beginning May 1, 2024. Entries will be accepted after August 1, 2024, in accordance with the following scheduled: **NO ENTRIES WILL BE ACCEPTED AFTER AUGUST 20, 2024.**
August 2 (12:01 a.m.) to August 15 (11:59 p.m.) - \$5.00 late fee, per exhibitor.
August 16 (12:01 a.m.) to August 20 (11:59 p.m.) - \$25.00 late fee, per exhibitor. No entries will be accepted after August 20 (11:59 p.m.)
- An exhibitor may enter one (1) item per class, unless noted differently.
- Exhibitors have up to 15 minutes to arrange, display or touch-up their exhibit upon arrival, prior to check in. Exhibits cannot be prepared or assembled on-site, unless it is a “real time” contest, and it is stated in the rules. Department Managers or Competitive Exhibit Coordinator have the right to disqualify an entry or exhibit if anyone, other than the exhibitor, has prepared it. **ALL WORK MUST BE THAT OF THE EXHIBITOR.**
- Displayed exhibits may be limited – KSF reserves the right to only display what room allows. Any item not being displayed will have designated pick-up times. First place through third place is guaranteed to be shown. Every effort will be made to display ALL items entered in the fair.

7. Any item that does not meet Kansas State Fair requirements will not be accepted. If an item is accepted in oversight, it may later be disqualified and/or not judged or displayed.
8. During check-in, a Kansas State Fair staff member may question if you entered your item properly, if it is obvious the item may not meet the class requirements. If an exhibitor is not sure if the item(s) are entered properly, they must ask a staff member for assistance **BEFORE** the item is checked in. This process can only be done during receiving hours and at the request of the exhibitor. If you question the class entered, and the Department Manager can justify the error, it may be moved to the proper class. Once an item has been checked-in, **IT CANNOT BE MOVED**, without the prior approval of the Competitive Exhibit Coordinator. Check-in finalizes your entry. Kansas State Fair does not allow any item substitutions. If an item is entered in an incorrect category, it may be disqualified by a judge.
9. Entries will not be entered or judged in "Any Other Items" or "Not Specified" class if another class for that item is available.
10. All exhibits must have been created, grown, or harvested by the exhibitor during the season of current year unless otherwise stated. All creative items must have been completed since the 2023 Kansas State Fair (Since September 20, 2023).
11. If a "real-time" contest has fewer than two entered contestants, the contest may be changed to allow walk-up entries, with the approval of the KSF Competitive Exhibit Coordinator and sponsor (if the Division is sponsored).
12. After arrangements of exhibits for prizes, no change will be allowed except on authority from KSF Competitive Exhibit Coordinator.
13. **Our primary audience consists of family and youth. We reserve the right to reject any entry that may be considered objectionable by that audience.**
14. Youth Division: Youth exhibitors must be 18 or under as of January 1 of current year. Youths MAY enter in the Youth Division and again in any other division for which they qualify.
Senior Division: Senior exhibitors must be 65 or over as of January 1 of the current year. Senior exhibitors MAY enter in the Senior Division and again in any other division for which they qualify.
Entering in a specific age division does not exclude entry in other divisions for which they qualify.
15. A brief description of your item when entering online (as to color, size or pattern, brand) is required.
16. For the protection of the exhibitor, claim stubs are required at the time of release for items. If you do not have a claim stub, items **will not** be released to persons other than the exhibitor with proper ID.
17. Each article in a collection or plural exhibit must show the exhibitor's name and class of competition.
18. All exhibits will receive the best care and protection in their surroundings. The exhibits are subject to owner's risk and in no event will the Kansas State Fair, KSF staff, or volunteers be responsible for any damage which may occur. Delicately constructed items requiring more than normal careful handling should not be submitted. All exhibits will be displayed at the discretion of the KSF Staff.
19. The Kansas State Fair reserves the right to cancel any class or placing if the entries are insufficient to secure adequate competition or an award is not merited.
20. Participants will not have access to their items once they have been received by the Kansas State Fair staff. Release/Pick-up dates will be listed in the department handbooks. Any Exhibitor who does not claim their exhibit during the listed times will be required to make an appointment with the Competitive Exhibits Coordinator for release of their exhibit. Perishable items (food) and plants will be discarded and/or donated immediately following the Fair. Non-perishable items not claimed by October 15, of the current year, will be discarded.
21. **All** Division Champions and Reserve Champions will receive a Rosette.
22. The Kansas State Fair reserves the right to cancel, eliminate, or change the published premium amounts due to lack of sponsorship.
23. If, at the Judge's discretion, an entry does not merit a placing, the Judge shall give no award under any circumstances. The rule applies whether there is one or more exhibits in the class. If a tie occurs in any division or class, a judge will determine the winner.
24. When attending the Kansas State Fair, you enter an area where photography, audio, and video recording may occur. By entering the Fairgrounds, you consent to such recording media and its release to be used for news, telecasts, web casts, promotional purposes, advertising, social media, and websites. You further waive all rights you may have to any claims in connection with publication of these materials, regardless of the purpose or sponsoring of such publication.

SHIPPING:

SHIPPED ITEMS

Shipping charges on all exhibits must be prepaid. Packages should be addressed to: Kansas State Fair, ATTN: (*Fine Arts, Clothing, etc*) Department, 2000 N. Poplar, Hutchinson, KS 67502 and *must* arrive by August 23, 2024. A copy of your entry receipt should also be included in your package with your pre-registered items. Please make sure all items are labeled in a manner that can be removed before judging (a note attached by a rubber band, twist tie, masking tape, safety pin, etc.)

ITEMS TO BE RETURNED

Nonperishable item(s) will be shipped back at the exhibitor's request and expense after the fair and in its original packaging. **A Prepaid shipping label must be included with the original packaging, along with any special instructions.** Additional insurance must be included on the Prepaid Shipping Label. KSF will not add additional value to any shipment.

Note: A prepaid shipping label may be purchased on usps.com. Attach the label to an email and send to nancy.j.schmutz@ks.gov.

SPECIAL DIVISION

2024 Kansas State Fair
Quilt Block Contest

DIVISION 321

Kansas
Wildflowers

The following requirements must be met:

- * Purchase a block kit, available online (After April 1, 2024) for \$4.00 each. Block kits contain (1) 6" x 6" and (2) 10" x 10" pieces of fabric. Kits are currently available through the Kansas State Fair Office by calling 620-669-3621. **Limit 2 kits per person. Allowed to enter 1 in the Fair.**
- * Some of each material from the kit **MUST** be used in the block you create.
- * Kansas Wildflowers. The blocks may be pieced, appliqued, and/or embroidered.
- * Completed blocks need to measure 12 ½" square. It should be equal all the way around the blocks. **DO NOT QUILT the block.**
- * Fabric must be securely attached to the block with stitching. Fabric may be attached with fusible web but must be stitched down securely so it will not become loose later.



Purchasing a block kit does not mean you have entered your exhibit. You must still register online. If you choose not to have your block judged but would like it in the quilt, please return it to the KSF – 2000 N. Poplar, Hutchinson, KS 67502



Sew In 2 Quilts
Hutchinson, KS 67501
sewin2quilts.com (620) 860-9753

BEGINNERS & BASICS

Division 301 - Children's Stuffed Toy

Premiums awarded for this division are 1st - \$7, 2nd - \$6, 3rd - \$5.

These toys will be donated and distributed across Kansas by First Responders benefiting children in need. Entries must use new Polyfil-Stuffing. Eyes, nose, hair, etc. should be painted on with fabric paints or embroidered if possible. Any items not painted or embroidered, need to be securely attached.

Class

1. Stuffed Toys for children of any age

301 Judging Criteria

Clean/Neat	20
Color/Design	20
Stitching	20
Safety	20
Creativity	20

Division 302 – Upcycle

Premiums awarded for this division are 1st - \$7, 2nd - \$6, 3rd - \$5.

Upcycle any fabric you have or can get. Old tents, towels – whatever is not going to be used again and can use a new lease on life? No new fabrics can be used. You can make any item you like out of your upcycled items. Attach before and after photo to item. Describe process of changes.

Class

1. Adult – Aged 18 as of January 1, current year.
2. Youth – Aged 18 or under as of January 1, current year.

302 Upcycle

Materials	30
Creativity	40
Practicality –	
Durability	10
Coolness	20

Division 303 - Crocheting

Premiums awarded for this division are 1st - \$7, 2nd - \$6, 3rd - \$5. Division Champion will be awarded a gift certificate from the Yarn Barn of Kansas and a rosette.

Class

1. Clothing Item – Adult/Infant/Child - Any stitch or multiple stitches
2. Afghan – Any stitch
3. Afghan - Multi-Design Stitches
4. Doily - Any size
5. Fashion Accessory (Shaw, Stole, Scarf, etc.)
6. Baby Blanket (45" x 45" or smaller)
7. Other item not listed.
8. Holiday Item, Any.

303 Judging Criteria

Appearance:	35
Clean and Neat	
Workmanship:	65
Attaching, joining yarn neat:	
Ends woven inconspicuously.	
Gauge: Stitches: Tension:	
Uniformed Stitches.	

Division 304 - Doll Making

Premiums awarded for this division are 1st - \$7, 2nd - \$6, 3rd - \$5. Division Champion will be awarded \$10 and a rosette.

Must be completely and made of "fabric only" including bodies, face, and clothing. No porcelain parts. Exhibitor may furnish a stand to hold doll upright.

Class

1. Doll (No Animals) - Must be original. No pattern used.
2. Doll (No Animals) - Kits or patterns allowed.

304 Doll Making	
Clean & Neat	20
Color & Design	20
Stitching	20
Safety	20

Division 305 – Tie Dye

Premiums awarded for this division are 1st - \$7, 2nd - \$6, 3rd - \$5. Division Champion will be awarded \$10 and a rosette.

Class

1. Adult – Any Item
2. Youth – Any item

305 Tie Dye	
Clean & Neat	25
Color & Design	25
Appropriate for Project	25
Consistency of Pattern	25

Division 306 - Hand Knitting

Premiums awarded for this division are 1st - \$7, 2nd - \$6, 3rd - \$5. Division Champion will be awarded a gift certificate from the Yarn Barn of Kansas and a rosette.

Class

1. Afghan - Multi-Design Stitches
2. Baby Blanket – 45 x 45 or smaller
3. Fashion Accessory - Shawl, Stole, Scarf, Shrug, Hat, Gloves, Mittens, Socks, Slippers, Etc. .
4. Hand Knitted Item made from hand spun yarn. (spun & knitted by exhibitor)
5. Knitted Lace Shawl, Stole, Scarf
6. Clothing Item – Adult/Infant/Child - Any stitch or multiple stitches
7. Other than listed.
8. Holiday Item - Any

306 Knitting	
General Appearance	20
Color, Design & Texture	20
Workmanship	60

NEEDLEWORK

ALL NEEDLEWORK IN THIS SECTION (DIVISIONS 308 – 313) MUST FOLLOW THESE GUIDELINES

1. *Framed exhibits will not be accepted unless ready for hanging (framed & wired). Maximum frame size is 36" x 36".
2. No woodwork items.
3. Be sure wire is twisted and strong enough to support picture on wall.

Division 308 - Needlework - Beading

Premiums awarded for this division are 1st - \$7, 2nd - \$6, 3rd - \$5. Division Champion will receive \$10 and a rosette.

Must use thread or fiber. Make sure all entries are done only with these beading techniques.

Class

1. 3-D Beadwork (boxes, keysets, etc.)
2. Bead Embroidery
3. Brick Stitch Jewelry
4. Ensemble (3 pieces - consisting of necklace, bracelet, and earrings)
5. Kumihimo

Judging Criteria	
General Appearance	20
Workmanship	40
Color, Design & Texture	40

6. Loom Beading - Any item
7. Peyote Stitch jewelry
8. Raw Beading *Must be an **original design/** cannot use a pattern.
9. Right Angle Weave
10. Tapestry
11. Other than Listed - Beading item
12. Holiday Item – Any.

Division 309 - Needlework - Counted Cross Stitch

Premiums awarded for this division are 1st - \$7, 2nd - \$6, 3rd - \$5. Division Champion will receive \$10 and a rosette.

Stitch size is design only. Do not count the frame in that measurement.

Class

1. Home Accessory Item (Box Tops, Trays, Pillow, etc. - No Wall Hangings)
2. Wall Hanging using at least 3 - letters, numbers, figures, border *Framed.
3. Small items, group of 4 or more (bookmarks, coasters, etc.)
4. Wall Hanging, Banner, or Bell Pull (does not require framing; must be ready to hang)
5. Wall Hanging on Aida; design area 16" or more *Framed.
6. Wall Hanging on Aida; design area up to 16" *Framed.
7. Wall Hanging on Linen or other even weave fabric; design area 16" or more *Framed.
8. Wall Hanging on Linen or other even weave fabric; design area up to 16" *Framed.
9. Other Than Listed - Cross Stitch Item
10. Holiday Item – Any.

Judging Criteria	
General Appearance	20
Workmanship	40
Color, Design & Texture	40

Division 310 - Needlework - Hand Embroidery

Premiums awarded for this division are 1st - \$7, 2nd - \$6, 3rd - \$5. Division Champion will receive \$10 and a rosette.

Class

1. Heirloom Embroidery (Silk Ribbon, printed patterns, etc.) - Any item
2. Household Article (Table runner, Scarf, Towel, Tea Towels (Set of 4), Pillow, etc.)
3. Wall Hanging *Framed
4. Other Than Listed (German, Finnish, Brazilian, Twilling, etc.)
5. Holiday item – Any.

Judging Criteria	
General Appearance	20
Workmanship	40
Color, Design & Texture	40

Division 311 - Needlework - Machine Embroidery

Premiums awarded for this division are 1st - \$7, 2nd - \$6, 3rd - \$5. Division Champion will receive \$10 and a rosette.

Class

1. Embellished Garment
2. Household Item (Includes Pillow, Tea Towels (set of 4)
3. Wall Hanging
4. Holiday item, any

Judging Criteria	
General Appearance	20
Workmanship	40
Color, Design & Texture	40

Division 312- Needlework - Needlepoint

Premiums awarded for this division are 1st - \$7, 2nd - \$6, 3rd - \$5. Division Champion will receive \$10 and a rosette.

Class

1. Wall Hanging *Framed
2. Other Than Listed
3. Holiday item - Any

Judging Criteria	
General Appearance	20
Workmanship	40
Color, Design & Texture	40

Division 313 - Needlework - Other Needle Arts

Premiums awarded for this division are 1st - \$7, 2nd - \$6, 3rd - \$5.

Class

1. Bobbin Lace
2. Tatting
3. Applique – Hand or machine; 1 or 2 layers (no quilting).
4. Other Than Listed
5. Holiday Item - Any

Judging Criteria	
General Appearance	20
Workmanship	40
Color, Design & Texture	40

PEOPLE WITH DISABILITIES

The following classes are for individuals with a disability, who have a physical or mental impairment that substantially limits one or more "major life activities", has a record of such impairment or is regarded as having such an impairment.

Division 314 - Individuals with a Disability / Impairment/ Limitation

Premiums awarded for this division are 1st - \$6, 2nd - \$5, 3rd - 5th a ribbon. Division Champion will receive a rosette.

1. Registration must be in the exhibitor's name and cannot be that of The Life Coach
2. Exhibits must be made within the past year and be made by the exhibitor.

Class

1. Crochet - Any item
2. Knitting - Any item
3. Sewing - Any item
4. Miscellaneous

QUILTING

Guide for Common Quilt Sizes **Approximate sizing. Only to be used for reference when determining class. Quilt does not have to be exact measurements except for miniature quilts.

- Placemats - 11" - 12" wide x 15" - 18" long
- Miniatures - Blocks can be no larger than 4" x 4". Maximum size of quilt is 24" x 24"
- Square Table Topper - 36" x 36" Turn the quilt so the corners are pointing to the sides of the table.
- Table Runner - 12" - 18" x 40" - 72". Longer tables will require a longer runner.

- Wall Hangings - Any size can qualify for a wall hanging. Check specific contest for requirements if any.
- Crib - 30" x 26" or 36" x 52"
- Throw – 37-63" x

53 -71" Quilts

- Twin 64" - 72" x 86" - 96"
- Full - 70" - 88" x 88" - 100"
- Queen - 88" - 99" x 94" - 108"
- King - 100" - 110" x 100" - 108"

All entries in this section must be a fabric sandwich made up of (3) three layers** (a top, a filling, and a back) held together with thread or string that goes through all layers. Due to available display space, some quilts may not be seen in their entirety. **Exhibitors are encouraged to submit a photo of the entire quilt (up to 8" x 10", placed in a plastic sleeve), to be included with the quilt when displayed.**

Quilts with offensive odors or pet hair may be disqualified for judging and display.

** Quilts with less than three layers should be entered in "Any quilt not listed".

ALL QUILTING (DIVISIONS 315 - 320) MUST FOLLOW THESE GUIDELINES

PLEASE READ DEFINITIONS CLOSELY FOR AMATEURS AND PROFESSIONALS SO YOU ARE ENTERED INTO THE PROPER CLASSES. IF YOU NEED ANY ASSISTANCE, PLEASE CONTACT THE DEPARTMENT MGR – KATHY PETZ (620) 694-4057

***Exhibitor of the Best of Show in Hand or Machine Quilt cannot win more than (2) two consecutive years in a row.**

Classes are categorized by Amateurs, Professionals, or Group Classes. Which are you?

An **amateur** is someone who quilts for the joy and satisfaction of creating items and as a hobby or past time and doesn't regularly do quilt work earning money.

A **professional** is someone who actively teaches quilting, produces, and sells quilted items or offers quilting services for a fee and earns more than \$2,000 per year for their services. The former classifications of commercial quilters are now identified only as professionals.

- **Amateur & Professional Classes are strictly for items containing at least (1) Amateur. Example: An amateur makes the top of the quilt and pays someone else to quilt it.**
- **Amateur Group classes must be only amateurs. ALL work is done solely by amateurs.**
- **Professional Group classes can consist of any variation of individuals as long as they are all Professional**
- When entering a group class, the entry is to be made in the account name of an individual within the group who is willing to provide their tax information for premiums if earned. *Group names* should be listed, including members, in the story which will be attached to the quilt. See detail at the beginning on the quilting section for specifications.

- All entries in this section must be a fabric sandwich made up of (3) three layers (a top, a filling, and a back) held together with thread or string that goes through all layers. Due to available display space, some quilts may not be seen in their entirety. Exhibitors are encouraged to submit a photo of the entire quilt (up to 8" x 10", placed in a plastic sleeve), to be included with the quilt when displayed.
- Modern quilts are welcome! Quilts with offensive odors or pet hair may be disqualified for judging and display.
- Exhibitors must cover any names on the quilt front or back that would identify the exhibitor. Cover the name with masking tape and / or a piece of paper. If the name is on the front of the quilt, the mask will be removed for display.
- If you have any questions and need assistance, please contact us.

**Grand Champion Quilt - Rosette will be presented to the winner during the Governor's Awards
Sponsored by Sew In 2 Quilt**

"Grand Champion Quilt" Quilt for the Kansas State Fair - judges will select one winner from the champions of the quilt divisions.

Premium for Grand Champion Quilt - \$200.

Best Hand Quilting – Premium \$100 and a Rosette.

Best Machine Quilting – Premium \$100 and a Rosette.

Division 315 – Log Cabin

Sponsored by Sew In 2 Quilt



Premiums awarded for this division are 1st - \$45, 2nd - \$35, 3rd - \$20.

Premiums awarded for this division are 1st - \$50, 2nd - \$35, 3rd - \$20.

Find your favorite Log Cabin pattern and create a quilt. Log Cabin patterns can be traditional, wonky, offset, curvy or twisted in a square or triangle.

The following requirements must be met:

- Entries must be pieced by an amateur but can be quilted by an amateur or professional.
- Entries may be traditionally pieced or foundation pieced.
- Quilt may include border(s).



Class

1. Log Cabin Quilt – (Perimeter over 200")

An **amateur** quilter is one who quilts for the joy and satisfaction of creating items and as a hobby or past time and doesn't regularly do quilt work earning money.

Division 316 - Amateurs Only - 1 Individual **Sponsored by Prairie Quilt Guild - Wichita**

Premiums awarded for this division are 1st - \$10, 2nd - \$8, 3rd - \$5. Division Champion will receive \$25, a \$10 gift certificate from Overbrook Quilt Connection (overbookquilts.com), and a rosette.

***ALL ITEMS IN THIS DIVISION MUST BE COMPLETED EXCLUSIVELY BY THE EXHIBITOR, WHO IS AN AMATEUR QUILTER, WITHOUT ANY ADDITIONAL ASSISTANCE. EXHIBITOR CANNOT PAY FOR TOP OF QUILT TO BE QUILTED.**

Class

1. Bed Runner, Table Runner, or Topper, Set of (4) Placemats – Hand Quilted
2. Bed Runner, Table Runner, or Topper, Set of (4) Placemats – Machine or Long Arm Quilted
3. Bed Quilt, Pieced – Hand Quilted
4. Bed Quilt, Pieced – Machine or Long Arm Quilted
5. Bed Quilt, Applique – Hand Quilted
6. Bed Quilt, Applique – Machine or Long Arm Quilted
7. Bed Quilt, Embroidered – Hand Quilted
8. Bed Quilt, Embroidered – Machine or Long Arm Quilted
9. Bed Quilt, (2) or more Techniques – Hand Quilted
10. Bed Quilt, (2) or more Techniques – Machine or Long Arm Quilted
11. Crib Quilt, Lap Quilt or Throw – Hand Quilted
12. Crib Quilt, Lap Quilt or Throw – Machine or Long Arm Quilted
13. T-Shirt Quilt – Hand Quilted
14. T-Shirt Quilt – Machine or Long Arm
15. Miniature Quilt - consisting of 3 layers held together with stitching – Hand Quilted
16. Miniature Quilt consisting of 3 layers held together with stitching – Machine or Long Arm Quilted.
17. Wall Quilt – consisting of 3 layers held together with stitching – Hand Quilted.
18. Wall Quilt – consisting of 3 layers held together with stitching – Machine or Long Arm Quilted
19. Throw Quilt – consisting of 3 layers held together with stitching – Hand Quilted.
20. Throw Quilt – consisting of 3 layers held together with stitching – Machine or Long Arm Quilted.
21. Any Quilt Not Listed - Hand Quilted *Must name technique in description area at time of entry.
22. Any Quilt Not Listed - Machine or Long Arm Quilted *Must name technique in description area at time of entry.

Quilts - Judging Criteria	
Quilt Backing	40
Quilt Top	40
Quilting	20

Division 317 - Amateur Group Classes

Premiums awarded for this division are 1st - \$10, 2nd - \$8, 3rd - \$5. Division Champion will receive \$25 and a rosette.

***ALL ITEMS IN THIS DIVISION MUST BE COMPLETED STRICTLY BY A GROUP OF ALL AMATEUR QUILTERS WITHOUT ANY ADDITIONAL ASSISTANCE FROM ANY PROFESSIONALS.**

Class

1. Bed Runner, Table Runner, or Topper, Set of (4) Placemats – Hand Quilted
2. Bed Runner, Table Runner, or Topper, Set of (4) Placemats – Machine or Long Arm Quilted
3. Bed Quilt, Pieced – Hand Quilted

4. Bed Quilt, Pieced – Machine or Long Arm Quilted
5. Bed Quilt, Applique – Hand Quilted
6. Bed Quilt, Applique – Machine or Long Arm Quilted
7. Bed Quilt, Embroidered – Hand Quilted
8. Bed Quilt, Embroidered – Machine or Long Arm Quilted
9. Bed Quilt, (2) or more Techniques – Hand Quilted
10. Bed Quilt, (2) or more Techniques – Machine or Long Arm Quilted
11. Crib Quilt, Lap Quilt or Throw – Hand Quilted
12. Crib Quilt, Lap Quilt or Throw – Machine or Long Arm Quilted
13. T-Shirt Quilt – Hand Quilted
14. T-Shirt Quilt – Machine or Long Arm
15. Miniature Quilt, consisting of 3 layers held together with stitching – Hand Quilted
16. Miniature Quilt, consisting of 3 layers held together with stitching – Machine or Long Arm Quilted
17. Wall Quilt – consisting of 3 layers held together with stitching – Hand Quilted.
18. Wall Quilt – consisting of 3 layers held together with stitching – Machine or Long Arm Quilted
19. Throw Quilt – consisting of 3 layers held together with stitching – Hand Quilted.
20. Throw Quilt – consisting of 3 layers held together with stitching – Machine or Long Arm Quilted.
21. Any Quilt Not Listed - Hand Quilted *Must name technique in description area at time of entry.
22. Any Quilt Not Listed - Machine or Long Arm Quilted *Must name technique in description area at time of entry.

Quilts - Judging Criteria	
Quilt Backing	40
Quilt Top	40
Quilting	20

Division 318 - Professionals Only – 1 Individual

Premiums awarded for this division are 1st - \$10, 2nd - \$8, 3rd - \$5. Division Champion will receive \$25 and a rosette.

***ALL ITEMS IN THIS DIVISION MUST BE COMPLETED EXCLUSIVELY BY THE EXHIBITOR, WHO IS A PROFESSIONAL QUILTER, WITHOUT ANY ADDITIONAL ASSISTANCE.**

Class

1. Bed Runner, Table Runner, or Topper, Set of (4) Placemats – Hand Quilted
2. Bed Runner, Table Runner, or Topper, Set of (4) Placemats – Machine or Long Arm Quilted
3. Bed Quilt, Pieced – Hand Quilted
4. Bed Quilt, Pieced – Machine or Long Arm Quilted
5. Bed Quilt, Applique – Hand Quilted
6. Bed Quilt, Applique – Machine or Long Arm Quilted
7. Bed Quilt, Embroidered – Hand Quilted
8. Bed Quilt, Embroidered – Machine or Long Arm Quilted
9. Bed Quilt, (2) or more Techniques – Hand Quilted
10. Bed Quilt, (2) or more Techniques – Machine or Long Arm Quilted
11. Crib Quilt, Lap Quilt or Throw – Hand Quilted
12. Crib Quilt, Lap Quilt or Throw – Machine or Long Arm Quilted
13. T-Shirt Quilt – Hand Quilted
14. T-Shirt Quilt – Machine or Long Arm
15. Miniature Quilt, consisting of 3 layers held together with stitching – Hand Quilted
16. Miniature Quilt, consisting of 3 layers held together with stitching – Machine or Long Arm Quilted
17. Wall Quilt – consisting of 3 layers held together with stitching – Hand Quilted.
18. Wall Quilt – consisting of 3 layers held together with stitching – Machine or Long Arm Quilted
19. Throw Quilt – consisting of 3 layers held together with stitching – Hand Quilted.
20. Throw Quilt – consisting of 3 layers held together with stitching – Machine or Long Arm Quilted.
21. Any Quilt Not Listed - Hand Quilted *Must name technique in description area at time of entry.
22. Any Quilt Not Listed - Machine or Long Arm Quilted *Must name technique in description area at time of entry.

Quilts - Judging Criteria	
Quilt Backing	40
Quilt Top	40
Quilting	20

Division 319 - Group Classes for Professionals Only

Premiums awarded for this division are 1st - \$10, 2nd - \$8, 3rd - \$5. Division Champion will receive \$25 and a rosette.

***ALL ITEMS IN THIS DIVISION MUST BE COMPLETED STRICTLY BY A GROUP OF PROFESSIONAL QUILTERS.**

Class

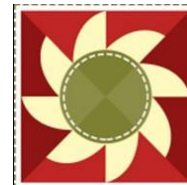
1. Bed Runner, Table Runner, or Topper, Set of (4) Placemats – Hand Quilted
2. Bed Runner, Table Runner, or Topper, Set of (4) Placemats – Machine or Long Arm Quilted
3. Bed Quilt, Pieced – Hand Quilted
4. Bed Quilt, Pieced – Machine or Long Arm Quilted
5. Bed Quilt, Applique – Hand Quilted
6. Bed Quilt, Applique – Machine or Long Arm Quilted
7. Bed Quilt, Embroidered – Hand Quilted
8. Bed Quilt, Embroidered – Machine or Long Arm Quilted
9. Bed Quilt, (2) or more Techniques – Hand Quilted
10. Bed Quilt, (2) or more Techniques – Machine or Long Arm Quilted
11. Crib Quilt, Lap Quilt or Throw – Hand Quilted
12. Crib Quilt, Lap Quilt or Throw – Machine or Long Arm Quilted
13. T-Shirt Quilt – Hand Quilted
14. T-Shirt Quilt – Machine or Long Arm
15. Miniature Quilt, consisting of 3 layers held together with stitching – Hand Quilted
16. Miniature Quilt, consisting of 3 layers held together with stitching – Machine or Long Arm Quilted
17. Wall Quilt – consisting of 3 layers held together with stitching – Hand Quilted.
18. Wall Quilt – consisting of 3 layers held together with stitching – Machine or Long Arm Quilted
19. Throw Quilt – consisting of 3 layers held together with stitching – Hand Quilted.
20. Throw Quilt – consisting of 3 layers held together with stitching – Machine or Long Arm Quilted.
21. Any Quilt Not Listed - Hand Quilted *Must name technique in description area at time of entry.
22. Any Quilt Not Listed - Machine or Long Arm Quilted *Must name technique in description area at time of entry.

Quilts - Judging Criteria	
Quilt Backing	40
Quilt Top	40
Quilting	20

Division 320 - Group Classes for Amateurs and Professionals Combined

(i.e., Amateur made the top and paid a professional to do the quilting)

Sponsored by Prairie Quilt Guild



**Premiums awarded for this division are 1st - \$10, 2nd - \$8, 3rd - \$5.
Division Champion will receive \$25 and a rosette.**

Prairie Quilt Guild
Wichita

***ALL ITEMS IN THIS DIVISION MUST BE COMPLETED BY A GROUP CONSISTING OF BOTH
AMATEUR AND PROFESSIONAL QUILTERS, IN ANY COMBINATION.**

Class

1. Bed Runner, Table Runner, or Topper, Set of (4) Placemats – Hand Quilted
2. Bed Runner, Table Runner, or Topper, Set of (4) Placemats – Machine or Long Arm Quilted
3. Bed Quilt, Pieced – Hand Quilted
4. Bed Quilt, Pieced – Machine or Long Arm Quilted
5. Bed Quilt, Applique – Hand Quilted
6. Bed Quilt, Applique – Machine or Long Arm Quilted
7. Bed Quilt, Embroidered – Hand Quilted
8. Bed Quilt, Embroidered – Machine or Long Arm Quilted
9. Bed Quilt, (2) or more Techniques – Hand Quilted
10. Bed Quilt, (2) or more Techniques – Machine or Long Arm Quilted
11. Crib Quilt, Lap Quilt or Throw – Hand Quilted
12. Crib Quilt, Lap Quilt or Throw – Machine or Long Arm Quilted
13. T-Shirt Quilt – Hand Quilted
14. T-Shirt Quilt – Machine or Long Arm
15. Miniature Quilt, consisting of 3 layers held together with stitching – Hand Quilted
16. Miniature Quilt consisting of 3 layers held together with stitching – Machine or Long Arm Quilted
17. Wall Quilt – consisting of 3 layers held together with stitching – Hand Quilted.
18. Wall Quilt – consisting of 3 layers held together with stitching – Machine or Long Arm Quilted
19. Throw Quilt – consisting of 3 layers held together with stitching – Hand Quilted.
20. Throw Quilt – consisting of 3 layers held together with stitching – Machine or Long Arm Quilted.
21. Any Quilt Not Listed - Hand Quilted *Must name technique in description area at time of entry.
22. Any Quilt Not Listed - Machine or Long Arm Quilted *Must name technique in description area at time of entry.

Quilts - Judging Criteria	
Quilt Backing	40
Quilt Top	40
Quilting	20

Division 321 - Quilt Block Contest

Sponsored by Sew In 2 Quilt



Premiums awarded for this division are 1st - \$25, 2nd - \$20, 3rd - \$15.

2023 Theme: **“Kansas Wildflowers** - *Your quilt block must reflect the wonderful wildflowers located in Kansas.*

Kansas Wildflowers is the theme for the annual Quilt Block Contest. The blocks can be traditionally pieced, foundation pieced, hand or machine appliqued or embroidered, or a combination of these techniques. Please make sure each quilt block is 12 ½ raw edge to raw edge.

The blocks will become the property of the Kansas State Fair and be used to create a quilt(s). The quilt(s) will be auctioned during the Fair the following year. **The auction will be held on the second Saturday at the Peoples Bank and Trust Arena.** Proceeds from the sale go toward department improvements.

A special thank you to **Sew In 2 Quilts**, Hutchinson, KS. Karna Lackey, owner. Karna donates the fabric, cuts, and assembles the kits, and completes the quilt(s) for the auction.

Quilt block packets may be purchased for \$3.00 each online. Anyone interested in creating a quilt block should contact the Competitive Exhibits Department.

The following requirements must be met:

- Purchase a block kit, available online for \$3.00 each. Block kits contain (1) 6” x 6” and (2) 10” x 10” pieces of fabric.
- Some of each fabric **MUST** be used in the quilt block you create.
- Completed blocks need to measure 12 ½” square. **DO NOT QUILT the block.** Only blocks measuring 12 ½” square will be accepted.
- Kansas Wildflower themed. They can be pieced, appliqued, and/or embroidered.
- Fabric must be securely attached to the block with stitching. Fabric may be attached with fusible web but must be stitched down securely so it will not become loose later.
- **Purchasing a block does not mean you have entered your exhibit. You must still register online by August 1, 2023. Entry fee of \$1.00 is required along with a processing fee of \$1.00.**

Only (50) kits are available. Exhibitor may use an established pattern or create an original block.

Class

1. State Fair Quilt Block Contest – Kansas Wildflowers
2. Order State Fair Quilt Kit

Should you choose not to enter your quilt block in the State Fair for judging but want it included in the quilt, please mail, or deliver the quilt block to: Kansas State Fair, Competitive Exhibits, 2000 N. Poplar, Hutchinson, KS 67502

Division 322 – Patriotic Pride Block (Previously QOV)

Sponsored by Sew In 2 Quilt



**Interpretation of the attached quilt block pattern can be the exhibitor's choice.

Premiums awarded for this division are 1st - \$15, 2nd - \$10, 3rd - \$5.

Kansas State Fair is proud to continue showing support for our military personnel. We encourage and invite you to make a quilt block from the provided pattern. The completed blocks will become the property of the Kansas State Fair.

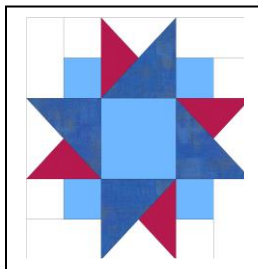
A quilt(s) made solely from our participants blocks will be proudly presented to a deserving individual(s) at our Veterans Brunch hosted each year during the fair. Thank you to all who have taken the time to enter and show their support.

The following requirements must be met:

- **Background fabric must be white or a white-on-white fabric.**
- For the remaining 3 colors/fabrics, use fabrics with white, true red (not maroon, burgundy) and bright or true blue (not navy). Fabrics may be solids, prints or batiks. Placement of the fabrics are the exhibitor's choice except for the background that must be white or white-on-white.
- **Completed blocks need to measure 12 ½" square.** DO NOT QUILT the block. ONLY blocks measuring 12 ½" square will be accepted.
- Block must be pieced, and not have any fabric fused. NO applique blocks accepted.
- Please use the pattern for Entwined Star. Please contact the Fair office at 620-669-3621 for a copy of the pattern.

Double Friendship Star

Printable Pattern is located at the end of this handbook.



QR Code for Pattern

Class

1. Patriotic Quilt Block - must use supplied pattern.

Should you choose not to enter your quilt block in the State Fair for judging but want it included in the quilt, please mail, or deliver the quilt block to: Kansas State Fair, Competitive Exhibits, 2000 N. Poplar, Hutchinson, KS 67502

Division 322.1 – Boots and Bling Quilt Block

Sponsored by Sew in 2 Quilts

Premiums awarded for this division are 1st - \$15, 2nd - \$10, 3rd - \$5.

Class

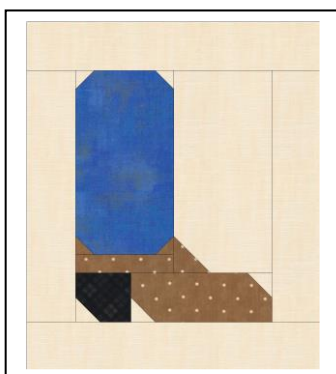
1. Boots and Bling Quilt Block

What is Boots and Bling?

Boots and Bling is the signature event of the Kansas Fairgrounds Foundation. The event features sponsorship opportunities and live and silent auctions. The fundraising helps to support the mission of the Kansas Fairgrounds Foundation: To further the renovation, construction, preservation, and beautification of the Kansas State Fairgrounds.



- Completed blocks need to measure 12 ½” square. **DO NOT QUILT the block.** Only blocks measuring 12 ½” square will be accepted.
- The Cowboy Boot pattern provided by the KSF must be used. Please contact the Fair office at 620-669-3621 for a copy of the pattern.
- All blocks become the property of the Kansas State Fair.



QR Code

QR Code for
Pattern

**Printable Pattern is located
at the end of this
handbook.**

Should you choose not to enter your quilt block in the State Fair for judging but want it included in the quilt, please mail, or deliver the quilt block to: Kansas State Fair, Competitive Exhibits, 2000 N. Poplar, Hutchinson, KS 67502

Division 323– Show Your Colors – Kansas Colleges

Fun quilt category. Any size. Amateur only.

Premiums awarded for this division are 1st - \$10, 2nd - \$8, 3rd \$5 .

Class

1. T-shirt Quilt
2. Pieced Quilt

Division 324 - Rug Making

Premiums awarded for this division are 1st - \$6, 2nd - \$5. Division Champion will receive \$10 and a rosette.

Rugs may not be larger than 24 square feet.

Class

1. Braided Rug
2. Hooked Rug
3. Rug made by any other technique not listed.
4. Rug made from recycled material.

323 Rug Making	
Design	25
General Appearance	25
Materials	25
Workmanship	25

Division 325 - Sewing - *No Quilting

Premiums awarded for this division are 1st - \$10, 2nd - \$8, 3rd - \$6. Division Champion will receive a \$20

Exhibitor may sew for themselves or another person. No Bridal Gowns will be accepted.

****These all must be textile items.**

Please display your items with safety pins on clear plastic hanger ready to hang.

Class

1. Adult Clothing
2. Costume: Re-enactor, Historical, Theater, Halloween, etc.
3. Home Decorating Item
4. Infant or Children's Clothing
5. Other Than Listed

324 Sewing	
General Appearance	
40	
Workmanship	60

Division 326- Spinning, Weaving & Felting

Premiums awarded for this division are 1st - \$7, 2nd - \$6, 3rd \$5. Division Champion

will receive \$10 and a rosette.

Class

1. Felting, Needle - Any article
2. Felting, Recycled - Any article.
3. Handspun Yarn - 50 yards minimum
4. Woven Household Item - Any fiber
5. Woven Wearable Item, clothing, or accessory.
6. Other Than Listed - Spinning, Weaving or Felted Item

YOUTH DIVISIONS

Division 327 - Youths - Ages 17 and under

Premiums awarded for this division are 1st - \$7, 2nd - \$6, 3rd - \$5. Each Division Champion (326 A & B) will receive \$10, a \$10 gift certificate from Overbrook Quilt Connection (overbrookquilts.com), and a rosette.

***Youths must be 17 and under as of January 1, current year, to enter his division. All items in this division must be made from textile-type materials.**

327 A - Class for youths 8 - 13 years of age

1. Blanket - Using any technique.
2. Crocheted Item - Any item except a scarf.
3. Embroidered, Cross Stitched or Other Needlework Article (no beading)
4. Felted or Weaving Article - Cannot be a craft article.
5. Hand or Machine Quilted Article (ALL work, including quilting done by exhibitor)
6. Hand or Machine Quilted Article (quilting done by someone other than exhibitor)
7. Knitted Item - Any item except a scarf.
8. Pillow – Must be decorated with hand or machine stitching.
9. Recycled Garment, Accessory or Household Item
10. Scarf - Using any technique.
11. Sewing - Accessory (bag, purse, tote, etc.)
12. Sewing - Blouse, Shirt, Shorts, Pants, Slacks or Skirt (1 piece, no outfits)
13. Sewing - Doll Clothes
14. Sewing - Outfit, 2 pieces or more
15. Stuffed Animal or Doll - Any type or style. (crocheted, knitted, sewn) Patterns may be used.
16. Youth Clothing & Textile Item - other than listed.

327 B - Class for youths 14 - 17 years of age

1. Blanket - Using any technique.
2. Crocheted Item - Any item except a scarf.
3. Embroidered, Cross Stitched or Other Needlework Article (no beading)
4. Felted or Weaving Article - Cannot be a craft article.
5. Hand or Machine Quilted Article (ALL work, including quilting done by exhibitor)
6. Hand or Machine Quilted Article (quilting done by someone other than exhibitor)
7. Knitted Item - Any item except a scarf.
8. Pillow – Must be decorated with hand or machine stitching.
9. Recycled Garment, Accessory or Household Item
10. Scarf - Using any technique.
11. Sewing - Accessory (bag, purse, tote, etc.)
12. Sewing - Blouse, Shirt, Shorts, Pants, Slacks or Skirt (1 piece, no outfits)
13. Sewing - Doll Clothes
14. Sewing - Outfit, 2 pieces or more
15. Stuffed Animal or Doll - Any type or style. (crocheted, knitted, sewn) Patterns may be used.
16. Youth Clothing & Textile Item - other than listed.

Thank You to our Sponsors:

- Joan Butts
- Emporia Regional Quilters Guild – Emporia
- Funk Family – Salina
- KSF Foundation
- Kane Farm – Lyndon
- Konza Prairie Quilters Guild – Manhattan
- Needle Arts Guild of Wichita

- Overbrook Quilt Connection – Overbrook
- Prairie Quilt Guild - Wichita
- Quilters' Paradise – Baldwin City
- Jean Ramsey - Sterling
- Sew In 2 Quilts LLC - Hutchinson
- Kathy Voth – Hutchinson
- Walnut Valley Quilters Guild
- Yarn Barn of Kansas – Lawrence

DOUBLE FRIENDSHIP STAR

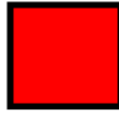


Cutting Instructions

Star colors may be changed (i.e. red for blue, print for lt blue, etc.) Star and lt blue colors can be changed by piecer. White areas must stay white or white on white. Areas within the star can be subdivided for more interest.



Background White or White on White
 (4) 2½" squares
 (4) 2½" x 4½" rectangles
 (1) 5½" square, cut twice diagonally (QST)



Red
 (1) 5 1/2" square, cut twice diagonally (QST)



Blue
 (2) 5½" square, cut once diagonally (HST)



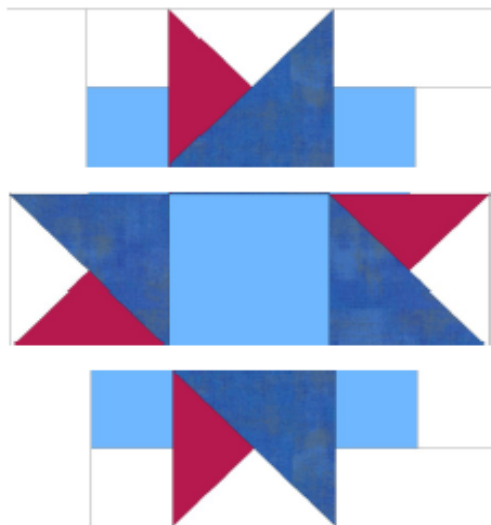
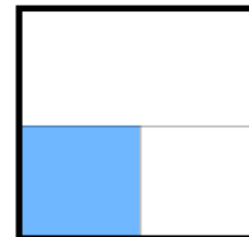
Lt Blue
 (4) 2½" Squares
 (1) 4 1/2" Square

Piecing Instructions:

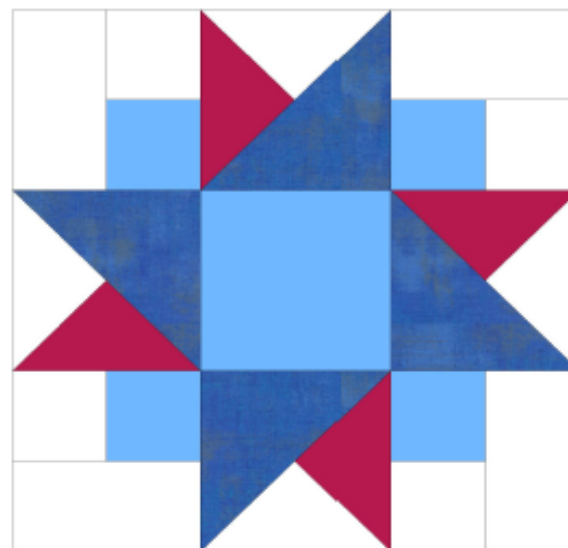
Sew a Red Quarter Square Triangle to a White Quarter Square Triangle.
 Sew a Blue Half Square Triangle to this unit. This triangle will be larger than the previous unit. Center on red/white unit. Trim unit down to 4½".
 Make 4

Sew a white 2½" square to a 2½" Lt Blue square.
 Sew a white Rectangle to this unit. Unit should measure 4½".
 Make 4.

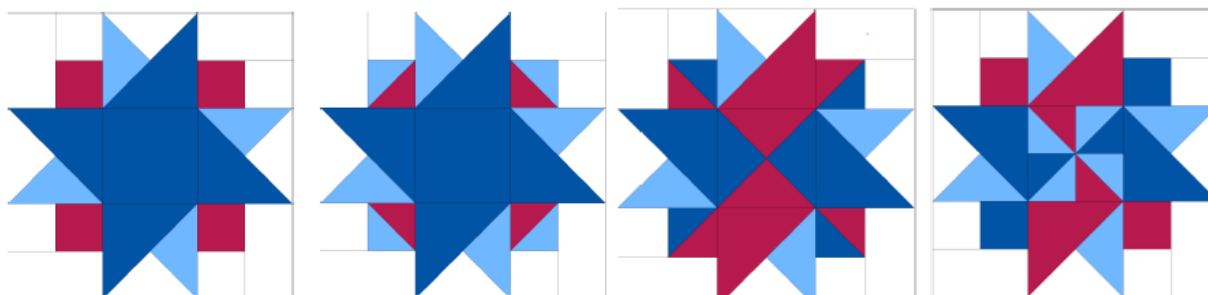
Assemble Rows as shown



Sew Rows together to complete the block.



Block must measure 12 1/2" square, raw edge to raw edge.



Boots & Bling Block Contest

Create a block using this boot pattern. Background must be a cream or tan fabric, no white backgrounds. Backgrounds may have a print, they do not need to be solids. Let your creative juices flow! Your boot top can be a fun fabric, or it can have an appliqued, pieced or embroidered design. Any embellishments must be securely attached. Finished block size must be 12" wide x 14 1/4" tall.

Cutting Instructions:

Background Fabric:

- A: (2) 2 1/2" x 12"
- B: (2) 2 1/2" x 10 1/4"
- C: (3) 1 1/4" squares
- E: (1) 4" x 8 3/4"
- H: (2) 1 1/2" squares

Heel:

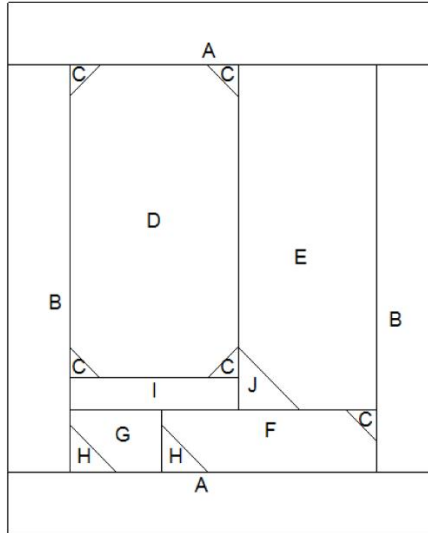
- G: (1) 2 x 2 3/4"

Boot Top (Shaft)

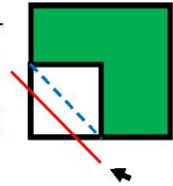
- D: (1) 4 1/2" x 8"

Boot Foot

- C: (3) 1 1/4" squares
- F: (1) 2 x 3 3/4"
- I: (1) 1 1/4" x 4 1/2"
- J: (1) 2" square



Triangles are made by marking a line diagonally on squares. Placing them on the other piece right sides together and sewing on the line. Trim excess 1/4" from stitching line. Press triangle out.



Assembly:

1. Mark a diagonal line on the back of (2) 1 1/4" background and Boot Foot Squares (C)
2. Place (2) background squares at the top of the Boot Top Rectangle (D). Stitch on the line, trim 1/4" from sewn line. Press to boot top.
3. Repeat with (2) 1 1/4" squares at the bottom of the boot top.
4. Sew boot foot (I) to the bottom of this unit.
5. Mark a diagonal line on the back of the J square. Place on the lower left corner of the background (E) rectangle. Stitch on the line, trim 1/4" from sewn line. Press to J.
6. Sew this unit to the boot top unit. Press to background unit.
7. Mark a diagonal line on (2) background squares (H). Place one on the lower left corner of the boot heel(D) and boot foot (F).
8. Sew on the line, trim 1/4" away, press to heel and boot.
9. Draw a diagonal line on the remaining background (C) square. Place on the upper right of the boot foot. Sew on the line, trim 1/4" away, press to boot foot.
10. Sew the boot foot to the boot heel.
11. Sew this unit to the bottom of the boot top unit.
12. Sew 2 1/2" x 10 1/4" borders to the sides of the block. Press to the border.
13. Sew 2 1/2" x 12" borders to the top and bottom of the block. Press to the border.

