

# AGRICULTURE DEPARTMENT

**Manager:** Kent McKinnis  
Ph: 620-899-0025

Location: Pride of Kansas Building

## ENTRY DEADLINE IS AUGUST 1, 2025

Online entry available May 1, 2025

All entries are required to be done online.  
If you need assistance with entry, please contact the Fair office.  
Please check the receiving schedule.

*August 2 (12:01 a.m.) to August 15 (11:59 p.m.) - \$5.00 late fee, per exhibitor. August 16 (12:01 a.m.) to August 19 (11:59 p.m.) - \$25.00 late fee, per exhibitor.*

*No entries will be accepted after August 19 (11:59 p.m.)*

Agriculture Schedule			
	DROP OFF	JUDGING	RELEASE/PICKUP
Crops and Exhibits	Tuesday, Sept 2 Noon - 5	Sept 5	Sunday, Sept 14, 6 p.m. – 8 p.m.
	Wednesday, Sept 3 11 a.m. – 8 p.m.		Monday, Sept 15, 9 a.m. – 1 p.m.
	Thursday, Sept 4, 8 a.m. to Noon		
GIANT PUMPKINS & WATERMELON	Wednesday, Sept 3, 7 p.m. – 8 p.m. (Forklift available)		

Exhibitor Social Security Numbers ARE REQUIRED. The KSF is a State-entity, and the State of Kansas requires the SSN for verification of premium payments.

If you do not receive a confirmation email following registration and entry, please contact the Fair office at 620-669-3621.

## Agriculture Guidelines and Rules

### GENERAL AND DEPARTMENTAL RULES

1. DEADLINE DATES: All exhibitors are required to submit their entries online by the deadline date of **August 1, 2025**. Assistance for online entries is available during regular business hours only. (Monday – Friday, 8:00 a.m. to 5:00 p.m.) by calling the fair office at 620-669-3621.
2. REQUIRED EXHIBITOR FEES: ALL exhibitors are required to pay a \$1.00 processing fee per person as well as a \$1.00 per item entry fee.
3. ENTRIES/LATE ENTRIES: Entries will be accepted beginning May 1, 2025. Entries will be accepted after August 1, 2025, in accordance with the following scheduled: **NO ENTRIES WILL BE ACCEPTED AFTER AUGUST 20, 2025.**  
**August 2 (12:01 a.m.) to August 15 (11:59 p.m.) - \$5.00 late fee, per exhibitor. August 16 (12:01 a.m.) to August 19 (11:59 p.m.) - \$25.00 late fee, per exhibitor.** No entries will be accepted after August 19 (11:59 p.m.)
4. An exhibitor may enter one (1) item per class, unless noted differently.
5. Exhibitors have up to 15 minutes to arrange, display or touch-up their exhibit upon arrival, prior to check in. Exhibits cannot be prepared or assembled on-site, unless it is a “real time” contest, and it is stated in the rules. Department Managers have the right to disqualify an entry or exhibit if anyone, other than the exhibitor, has prepared it. **ALL WORK MUST BE THAT OF THE EXHIBITOR.**
6. Displayed exhibits may be limited – KSF reserves the right to only display what room allows. Any item not being displayed will have designated pick-up times. First place through third place is guaranteed to be shown. Every effort will be made to display ALL items entered in the fair.
7. Any item that does not meet Kansas State Fair requirements will not be accepted. If an item is accepted in oversight, it may later be disqualified and/or not judged or displayed.
8. During check-in, a Kansas State Fair staff member may question if you entered your item properly, but only if it is obvious that the item may not meet the class requirements. If an exhibitor is not sure if they entered their item(s) properly, they must ask a staff member for assistance **BEFORE** the item is checked in. This process can only be done during receiving hours and at the request of the exhibitor. If you question the class entered, and the Department Manager can justify the error, it may be moved to the proper class. Once an item has been checked-in, **IT CANNOT BE MOVED**, without the prior approval of the Competitive Exhibit Coordinator. Check-in finalizes your entry. Kansas State Fair does not allow any item substitutions.
9. Entries will not be judged in “Any Other Items” or “Not Specified” class, if there is already a class for that item available.
10. All exhibits must have been created, grown, or harvested by the exhibitor during the season of current year unless otherwise stated. All creative items must have been completed since the 2024 Kansas State Fair (Since September 20, 2024).
11. If a “real-time” contest has fewer than two entered contestants, the contest may be changed to allow walk-up entries, with the approval of the KSF Competitive Exhibit Coordinator and sponsor (if the Division is sponsored).
12. After arrangements of exhibits for prizes, no change will be allowed except on authority from KSF Competitive Exhibit Coordinator.
13. **Our primary audience consists of family and youth. We reserve the right to reject any entry that may be considered objectionable by that audience.**
14. Youth Division: Youth exhibitors must be 18 or under as of January 1 of current year. Youths cannot enter in the youth division and again in another division in the same class.  
Adult Division: Adult exhibitors must be 18 as of January 1 of the current year.
15. A brief description of your item when entering on-line (as to color, size or pattern, brand) is appreciated.
16. For the protection of the exhibitor, claim stubs are encouraged at the time of release for items. If claim stub is lost, you must have a valid photo ID to claim the items.
17. Each article in a collection or plural exhibit must show the exhibitor’s name and class of competition.
18. All exhibits will receive the best care and protection in their surroundings. The exhibits, at times, are subject to owner’s risk and in no event will the Kansas State Fair, KSF staff, or volunteers be responsible

for any damage that may occur. Delicately constructed items requiring more than normal careful handling should not be submitted. All exhibits will be displayed at the discretion of the KSF Staff.

19. The Kansas State Fair reserves the right to cancel any class or placing if the entries are insufficient to secure adequate competition or an award is not merited.
20. Participants will have no access to their products once they have been received by the Kansas State Fair staff.
21. **All** Division Champions and Reserve Champions will receive a Rosette.
22. The Kansas State Fair reserves the right to cancel, eliminate, or change the published premium amounts due to lack of sponsorship.
23. If, at the Judge's discretion, an entry does not merit a placing, the Judge shall give no award under any circumstances. The rule applies whether there is one or more exhibits in the class. If a tie occurs in any division or class, a judge will determine the winner.
24. When attending the Kansas State Fair, you enter an area where photography, audio, and video recording may occur. By entering the Fairgrounds, you consent to such recording media and its release to be used for news, telecasts, web casts, promotional purposes, advertising, social media, and websites. You further waive all rights you may have to any claims in connection with publication of these materials, regardless of the purpose or sponsoring of such publication.
  1. *No duplicate samples for exhibition will be admitted in any class, with the following exception: duplicate exhibits from any one farm will be considered if the exhibits are from separate parcels of ground.*
  2. *All threshed grain will be exhibited by the gallon, unless otherwise noted.*

#### **SHIPPING:**

##### SHIPPED ITEMS

Shipping charges on all exhibits must be prepaid. Packages should be addressed to: Kansas State Fair, ATTN: (*Fine Arts, Clothing, etc*) Department, 2000 N. Poplar, Hutchinson, KS 67502 and *must* arrive by August 23, 2025. A copy of your entry receipt should also be included in your package with your pre-registered items. Please make sure all items are labeled in a manner that can be removed before judging (a note attached by a rubber band, twist tie, masking tape, safety pin, etc.)

##### ITEMS TO BE RETURNED

Nonperishable item(s) will be shipped back at the exhibitor's request and expense after the fair and in its original packaging. **A Prepaid shipping label must be included with the original packaging, along with any special instructions.** Additional insurance must be included on the Prepaid Shipping Label. KSF will not add additional value to any shipment.

*Note: A prepaid shipping label may be purchased on [usps.com](https://usps.com). Attach the label to an email and send to [nancy.j.schmutz@ks.gov](mailto:nancy.j.schmutz@ks.gov).*

# Special Contests for Ag

County Contest - Scarecrow (Division 105)

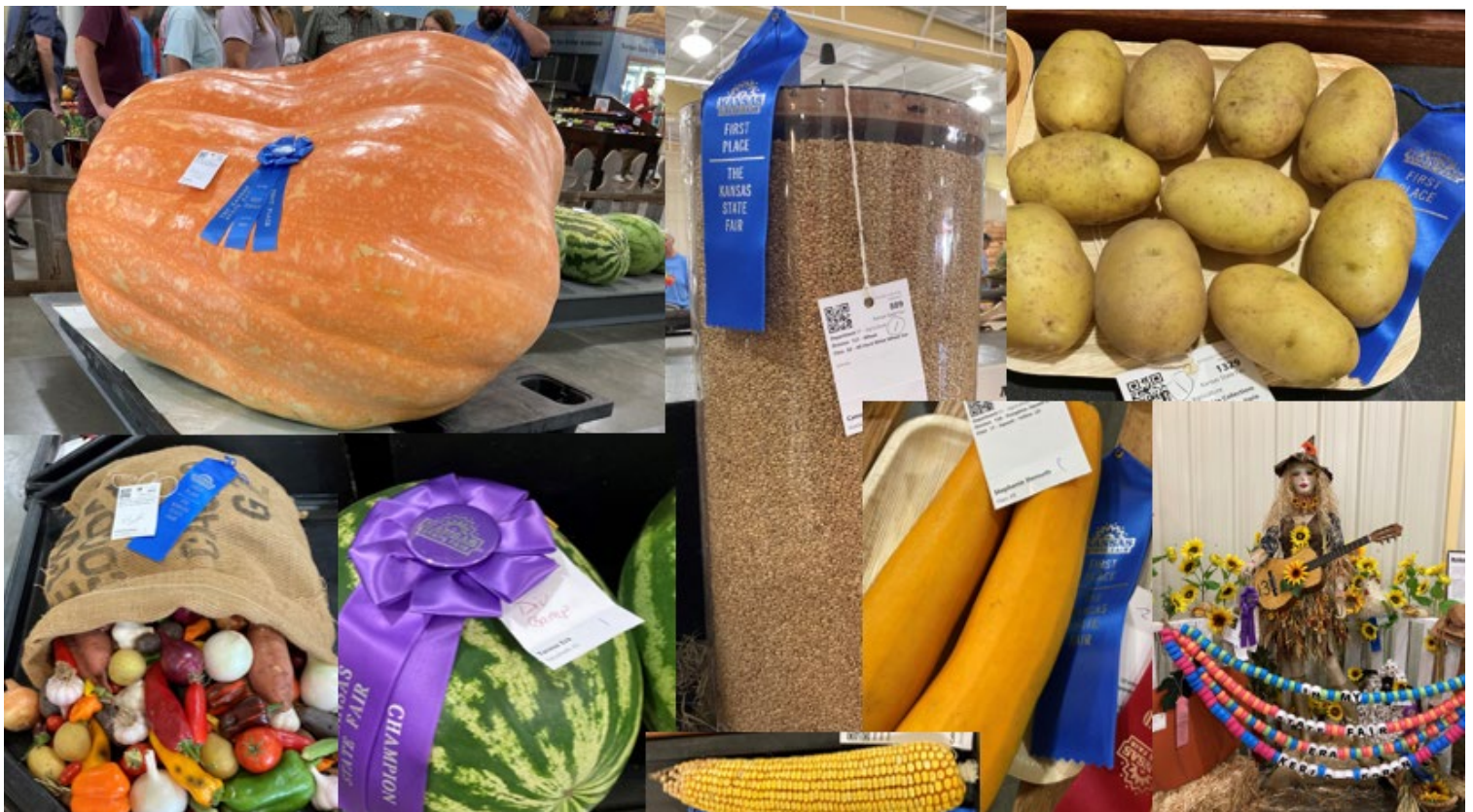
**Butter** Sculpture (Division 102)

**Seed Art** Contest (Division 102)

**Best Tasting Tomato** (Division 106)

**Corn Husking Contest** (Division 129)

Special Demonstrations - See visitor's **guide**.



# Division 100 – Youth Division

## Division 100 - Youth Division

*Kansas Corn sponsor Div. 3-4*

*Kansas Honey Producers sponsor Div. 7 – 10*



**YOUTH AGE CLASSES:** Participants must be 18 or under as of January 1, current year. Exhibitors that enter in the below classes, cannot enter in these same classes if offered in other divisions.

Kansas State Fair recognizes our future agriculture producers and supports their participation in harvesting crops with their families. We understand that not all classes offered in our Youth Division can be completed solely by the exhibitor, but we do ask that they be the ones to select the actual items that will be exhibited and judged. This should not be the choice of any other family member. Kansas State Fair General Rules state "Entries must be the work of the exhibitor". An exception has been allowed in this division due to the workload involved to produce these exhibits.

**Corn - 5 Ears** - You must include the company and variety at time of entry. All entries must be of a different variety. Refer to Division 108 for additional information.

**Premiums awarded for divisions 1-6 and 11-18 are 1st - \$7, 2nd - \$6, 3rd - \$5. Premiums for Divisions 7 – 10 are 1<sup>st</sup> - \$15, 2<sup>nd</sup> \$10, 3<sup>rd</sup> - \$5. Champion in Honey Division will receive \$15. Champion in the Youth Divisions 1-6 and 11 - 18 will receive a rosette.**

**\*\*Class 06 is also eligible for the Champion award from entries in Division #107.**

**\*\*Must name variety at time of entry on all classes \*excluding 4 - 10 and 14 & 16**

### Class

1. Apples (5)
2. Beans - Snap; Green or Yellow (8 )
3. Corn – 5 Ears - Any Company & Variety \*\*See rules above.
4. Crop Art - **See Division 103.**
5. Creative Spud – Decorate a potato
6. Decorated or Carved - Any fall pumpkin, squash or gourd.
7. Extracted Honey; Light \*\*See Kansas Honey Section, Div. 113 for complete instructions/requirements.
8. Extracted Honey; Dark \*\*See Kansas Honey Section, Div. 113 for complete instructions/requirements.
9. Frame of Honey (shallow or medium depth) \*\*See Kansas Honey Section for complete instructions/requirements and helpful information.
10. Honey Gift Package \*\*See Kansas Honey Section for complete instructions/requirements and helpful information.
11. Grain Sorghum in head
12. Onions (5)
13. Potatoes (5)
14. Pumpkins (1) – large field variety
15. Squash (2)
16. Sunflowers in Head – Confectionary or Oil (2)
17. Tomatoes (5)
18. Watermelon (1)

#### Judging Criteria

Color	20
Freedom from Blemish	30
Size	15
Uniformity	20
Variety Character	15



# Division 102 – Butter Sculpture Contest

## Division 102 - Butter Sculpture Contest - On Site- Saturday, Sept. 6, 2025

*Butter provided by Kansas Dairy*

Premiums awarded for this division are - 1st - \$15, 2nd - \$10, 3rd - \$5. Champion Sculpture will receive \$5 and a rosette.

**\*ENTRY FEE: \$1.00 - Pre-entry is recommended to guarantee space. On-site registration is allowed if space is available. Limit of 6 spaces per age group.**

On day of contest, check-in at Pride of Kansas, Agriculture Dept. Office is located at the west end of building. If exhibitor is a minor, parent must be available, on-site, during the competition but are not allowed in the competition area during the contest.



Judging Criteria	
Originality and Creativity	25
Story for choosing design	25
Use of theme	25
Technique	25

### Class

01	Ages 17 and Younger	Check-In: 11:30 am – 12:30 pm	Contest: 1:00 pm – 1:15 pm
02	Ages 18 and Older	Check-In: 12:00 pm – 1:00 pm	Contest: 1:30 pm – 1:45 pm

- Exhibitors will have approximately 2 foot of table space to work within. Work area will be located at the demonstration counter in the Ag/Floriculture Department.
- Items provided by KSF: 1# Block of Butter, Disposable Rubber Gloves, Plastic Cutlery – 1 ea., fork, spoon & knife, string and paper towels.
- Exhibitors may each bring (1) additional supply to work with. Item cannot be share with other exhibitors. (example: a piece of wire, piece of tubing, special carving tool, etc.)
- The use of a cell phone, tablet, or photo for reference and/or directions is also prohibited.
- All models will be judged based on originality, creativity, detail, and design.
- All sculptures will be on display until the last Sunday of the fair at which time they will be discarded.
- The theme for the 2025 Kansas State Fair is “**A day on the farm.**”

# Division 103 – Seed (Crop) Art

## Division 103 – Seed (Crop) Art

*Sponsored by Kansas Health Soil Alliance*

Premiums awarded for this division are 1st - \$15, 2nd - \$10, 3rd - \$5.



In addition to the general and agricultural rules, the following rules apply to this division.

- Seeds, stems, head, or panicles, and fruiting bodies or structures of oats, wheat, barley, flax, rye, corn, amaranth, canola, lentils, popcorn, decorative corn, soybeans, edible field beans, sunflowers, common buckwheat, field pea, millet, safflower, sorghum, sugar beet, sudangrass, common forage grasses, clovers, alfalfa, wild rice and all poppy seeds. Crop plants shall be those specimens grown in Kansas.
- Entries should be interesting creations made with seed corn and or corn cobs. Up to (12) twelve ears of any variety or combination of variety may be used in total. The corn or corn cobs may be carved, painted, glued or strung in any manner and mounted on any plain surface. Seeds and dried fruiting structures from any horticultural crop grown in Kansas are allowed. Forest, trees or shrub plants are allowed. Weed seeds or plants are not permitted.
- Suitable backgrounds may be plywood, canvas board, heavy mat board, and paneling.
- Exhibitor is required to list, by name, all items used by constructing a “legend” on a 4” x 6” card with identifying seeds.
- Maximum size of exhibit is 16” x 20”
- Search crop art on the internet and YouTube for inspiration.
- Theme: A day on the farm.

Judging Criteria	
Use of Theme	50
Creativity	25
Craftsmanship	25

### Class

1. Crop Art - Adults - \*Must be age 18 after Jan.1, current year.
2. Crop Art – Youth - \*Must be under the age of 18 before Jan 1, current year

## Division 104 – Ornamental Corn

### Division 104 - Ornamental Corn

Premiums awarded for this division are 1st - \$20, 2nd - \$15, 3rd - \$10.

A producer may have (2) two entries but must be different varieties and variety must be named. \*\* (3) Cobs must be submitted together and bound at top creating an appealing visual display for hanging.

Judging Criteria	
Appearance	50
Creativity	25
Condition of Corn	25

### Class

1. Ornamental Corn

# Division 105 – County Contest - Scarecrow

## Division 105 - County Contest - Scarecrow

### 2025 Kansas State Fair County Contest Scarecrow

Judging Criteria	%
Originality and Creativity	25%
Use of Sunflowers	25%
Use of Other Kansas crops	15%
Durability and Strength of Structure	20%
Practicality as a scarecrow	15%

Get Creative and have fun in the Agriculture Department with building a scarecrow. Take your level of creativity to another level and incorporate many of the Kansas Crops you have available. This Scarecrow **must include the use of sunflower.**

#### Class:

- Class 1. 4-H/FFA Youth (following age rule for 4-H).
- Class 2. Open Youth (following KSF rules of 18 and under)
- Class 3. Adult
- Class 4. Team - 2-3 youths and/or adults

Premiums awarded: 1<sup>st</sup> - \$50, 2<sup>nd</sup> - \$25 and 3<sup>rd</sup> - \$15.

One Overall Grand Champion at the Kansas State Fair will be selected from classes 1 – 4 will receive an additional \$ 25.00.

#### RULES

- Participants must pre-enter with the Kansas State Fair no later than August 19, 2025
- One entry per participant, per class.
- Receiving hours: September 2, 12-5: September 3, 11 a.m. to 8 p.m.; September 4, 8 a.m. to 12 a.m. Judging will take place on Friday, September 5 @ 2:00 p.m.
- All entries must incorporate sunflowers.
- A variety of Kansas crops are encouraged to be included.
- You must submit step by step photos or sketches on an 8 ½ x 11 paper with name and address in lower left corner (name will be covered prior to judging). Include age for youth entries.
- No size restrictions. You must be able to transport/carry the scarecrow from vehicle to building
- All scarecrows must be able to stand and/or sit on its own.



2313 N. 200 Park Circle  
Wichita, KS 67212  
Ph:316-209-4280





## DIVISION 106 – Best Tasting Tomato

### Division 106 – Best Tasting Tomato ON-SITE CONTEST

*Sponsored by Kent and Becky McKinnis*

Receiving Saturday, September 13, 9:30 a.m. to 10:00 a.m. Judging at 10:00 a.m.

Premiums awarded for this division are 1st \$20, 2nd - \$15, 3rd - \$10.

\*ENTRY FEE: \$1.00 - Pre-entry is recommended to guarantee space. On-site registration is allowed if space is available. Limited to ten (12) entries.

On day of contest, check-in at Pride of Kansas, Agriculture Dept., located at the west end of building by 10:00 a.m. on Saturday, September 13, 2025. If exhibitor is a minor, parent must be available, on-site during the competition, but are not allowed in the competition area during the contest.

- Blind Taste Test – Judges will not know the variety or the contestant.
- Judging is on scale of 1 (worst) to 10 (excellent)
- Tomatoes must have been grown in a home or community garden in the State of Kansas by contestant.
- All tomatoes must be washed and clean.
- Tomatoes don't have to be beautiful to taste good.
- Looking for the best tasting, large sandwich sized tomatoes. **Patio, Cherry, grape, yellow, orange, and striped tomatoes are excluded.**
- Entrants must identify the variety of each tomato on the entry form.
- The decision of the judges is final.

### Class

1. Adults - \*Must be age 18 after Jan.1, current year.
2. Youth - \*Must be under the age of 18 before Jan 1, current year.

## Division 107 – Squash & Pumpkins - Decorated

### Division 107 - Squash & Pumpkins - Decorated

Premiums awarded for this division are 1st - \$20, 2nd - \$15, 3rd - \$10.

Division Champion will receive a Gift Certificate (valued at \$25) and a rosette.

Decorated, Carved/Sculptured and Caricature pumpkins. \*\*These can be grown or purchased

pumpkins.

### Class

1. Carved / Sculptured - Any fall pumpkin, squash, or gourd
2. Decorated - Any fall pumpkin, squash, or gourd

Judging Criteria	
Appearance	50
Creativity	50

## Division 107B – County Agent Award

### Division 107B - County Agent Award

A plaque will be awarded to the County Agent who brings in the most *crop* entries excluding the Market Wheat Show to the Kansas State Fair. Forage and Grain Sorghum entries must be cut to length and ready to be put on display boards. Agent is requested to attach the entry cards to the exhibit. Fair staff will place entry on the display boards for judging. When pre-entries are sent in, the agent is to request that the exhibit cards be grouped together under their county name. **When picking up entry tags, agents are asked to complete a form showing number of actual entries entered and verified by the State Fair crop staff.**

## Division 108 – Corn – 5 Ears

### Division 108 - Corn - 5 Ears

*Sponsored by Kansas Corn*

**Premiums awarded for this division are:**

**1st - \$20, 2nd - \$15, 3rd - \$10.**

**Division Champion will receive \$100 and a rosette .**

**Division Champion will also receive an additional award presented at the Governor's Awards.**



If a brand runs strong in the "any other class" in a particular year, it will be placed in a Department Manager's Option class. It will also be considered next year to replace any variety decreasing in entries. Since all varieties in a class will be competing against each other, a producer may enter (2) two different varieties per class per farm unit. Exhibitors must give the name and address of the dealer from whom the seed was purchased.

### Class

1. DeKalb/Monsanto
2. NK/Golden Harvest/Syngenta
3. Pioneer/DuPont
4. Any Other Company's corn Hybrid
5. Longest Ear – Must be a Yellow or White Variety dent corn

Judging Criteria	
Color	20
Freedom from Blemish	30
Size	15
Uniformity	20
Variety Character	15

\*\*Youths should enter in classes available in Division #100. All entries must include the company and variety name on your entry form. Longest ear needs to be entered in Div. 125

## Division 109 – Crop Seeds

### Division 109 - Crop Seeds

Premiums awarded for this division are 1st - \$20, 2nd - \$15, 3rd - \$10.  
Division Champion will receive a rosette.

All must be current year crop.

#### Class

1. Alfalfa
2. Barley (current year crop)
3. Bromegrass
4. Confectionary Sunflowers
5. Field Corn
6. Grain Sorghum
7. Indian Grass
8. Millet
9. Oats
10. Oil Sunflowers
11. Popcorn
12. Rye
13. Triticale
14. Any other crop seeds

## Division 110 – Forage Sorghum in Heads

### Division 110 - Forage Sorghum in Heads

Premiums awarded for this division are 1st - \$20, 2nd - \$15, 3rd - \$10.

Variety must be named at time of entry (list in description). If more than one entry, varieties must be different.

#### Class

1. Forage Sorghum Varieties / Hybrids

## Division 111 - Grain Sorghum in Heads

### Division 111 - Grain Sorghum in Heads

Premiums awarded for this division are 1st - \$40, 2nd - \$30, 3rd - \$20.

If a brand runs strong in the "any other class" in a particular year, it will be placed in a Department Manager's Option class. It will also be considered next year to replace a variety decreasing in entries. A producer may enter (2) different varieties per class per farm unit. An exhibit shall consist of (5) five heads of grain sorghum. Variety must be named at time of entry (list in description)

\*\*Youths should enter in classes available in Division #100. All entries must include the company and variety at time of entry. Youths are not eligible to receive seed prizes if offered.

#### Class

1. All Sorghum in Head

## Division 112 - Hay

### Division 112 - Hay

Premiums awarded for this division are 1st - \$20, 2nd - \$15, 3rd - \$10.

An exhibit shall consist of one flake or slice at least 6" and no more than 10" thick from one standard rectangular bale and tied in two directions, or a 10" section cut from a round bale. An alternative method of collecting a "Hay" sample from large round bales would be to collect a sample from a windrow and using a cardboard box approximately 18 " square and 6" - 10" deep, place two strings in the box, and press the hay in the box, and tie it up. Variety should be named.

#### Class

1. Alfalfa
2. Brome
3. Prairie
4. Fescue

# Division 113 – Kansas Honey

## Division 113 - Kansas Honey

*Sponsored by Kansas Honey Producers Association*

Premiums awarded for this division are 1st - \$15, 2nd - \$10, 3rd - \$5.

**\*\*Class 11 will award 1st - \$30, 2nd - \$20, 3rd - \$10.**

**Class 12 will award 1st - \$15.**

**Sweepstakes Award will receive \$15 plus a plaque and a rosette.**

**Judge's Choice – will receive \$15 and a rosette.**

All youth classes are now listed in our Youth Division - Division #100

Open to all beekeepers. All jars must be plain and free of labels. No inner seals in lids.

**Note to Honey Exhibitors:** During receiving and release times at the 2025 KSF, all honey exhibitors will check the honey exhibits through the Ag Department Clerk. Only designated personnel will be allowed behind the check-in table.

### Class

1. Beeswax
2. Beeswax Candles
3. Chunk Honey
4. Comb Honey
5. Crystallized / Creamed Honey
6. Cut Comb
7. Extracted Honey; Dark
8. Extracted Honey; Light
9. Frame of Honey (shallow or medium depth)
10. Honey Gift Package
11. Black Label Honey \*Must be submitted in a 1 lb. Queenline or Gamber Glass Jar. Judged on taste only. Must be entered in (2) additional honey classes to be able to participate in this class.



## Tips & Helpful Judging Information



Click here  
for Tips on  
Honey Entry

## Division 114 – Market Alfalfa Show

### Division 114 - Market Alfalfa Show

*Sponsored by the Kansas Forage and Grasslands Council*



**Premiums awarded for this division are 1st - \$75, 2nd - \$50, 3rd - \$25.**

All exhibits in the Market Alfalfa Show shall consist of a representative sample of the hay lot. Sampling shall be done using a forage core sampler. Samples not exhibiting evidence of being collected with a forage core sampler will be disqualified. After sampling a minimum of (10) ten bales, mix sample and **submit to the Kansas State Fair by August 15. Pre-entry is required; must be pre-entered online by August 1.** Please mark on outside of package "Market Alfalfa Show". The alfalfa exhibited will become the property of the Kansas State Fair. For help with sampling, contact your local county extension office. All entries submitted will be judged based upon Relative Feed Values used in the Wisconsin System, crude protein, and a visual comparison. SDK Lab, Hutchinson, will provide the feed test for the Market Alfalfa Show. Kansas Forage and Grassland Council will provide a plaque for the winner.

#### Class



1. Market Alfalfa

***Market Alfalfa Show testing completed by SDK Laboratories, Hutchinson, KS.***

## Division 115 – Market Wheat Show

### Division 115 - Market Wheat Show

*Sponsored by the Kansas Wheat Commission*

**Premiums awarded for this division are 1st - \$30, 2nd - \$20, 3rd - \$15, 4th - \$12 and 5th - \$10. Champion will receive \$150 Reserve Champion \$125. Rosettes will also be awarded.**

Kansas Wheat Representative - KSU:

Coordinators: Martin Gleason, [mgleason@ksu.edu](mailto:mgleason@ksu.edu); 620-659-2149

Kurt Werth, [kwert@ksu.edu](mailto:kwert@ksu.edu); 620-255-0390

Market Wheat Show Committee Members: Lacey Noterman – [lnote@ksu.edu](mailto:lnote@ksu.edu); Andrea Burns –





[aburns@ksu.edu](mailto:aburns@ksu.edu); Allen Baker – [abaker@ksu.edu](mailto:abaker@ksu.edu); Wade Reh – [wreh@ksu.edu](mailto:wreh@ksu.edu); Marcus Preuninger – [marcus46@ksu.edu](mailto:marcus46@ksu.edu).

Counties without a County Fair Market Wheat Show: All exhibits in the Market Wheat Show shall consist of 5 pounds of wheat grown by the exhibitor in the current year and shall not be from a variety or research plot. All samples entered that have not gone through a County Fair Market Wheat Show and have not been graded by the Kansas Grain Inspection Service **must be delivered to the Extension Agents or Kansas State Fair BY 10:00 a.m., Tuesday, September 2, 2025.** The (5) five-pound sample can be sent in any container. ***Please mark on outside of package "Market Wheat Show."*** These samples will be graded by the Kansas Grain Inspection Service and scored. All entries must be made by variety name. All entries must be a combine run, as hand picking and/or screening is not allowed. Since all varieties in a class will be competing against each other, a producer may enter a maximum of (2) two different varieties per class, per farm unit and be paid premiums. The wheat exhibited will become the property of the Kansas State Fair. These entries will be eligible for the Sweepstakes Award. This classification is separate from the (20) twenty-pound wheat exhibit.

**ALL Wheat entries must be registered through the Kansas State Fair website prior to the Wheat Show.**

Counties with a County Fair Market Wheat Show: All exhibits in the Market Wheat Show shall consist of (5) five pounds of wheat grown by the exhibitor in the current year and shall not be from a variety or research plot. The sample then is to be turned into their county extension office for entry in the local county market wheat show. All Market Wheat Show samples that were entered in a County Fair Market Wheat Show and graded by the Kansas Grain Inspection Service "The local County Extension Agent should deliver the samples to a Market Wheat Show Committee member by September 2, 10:00 a.m. Any entries after this time will not be eligible for the sweepstakes awards . Agents are to use the **LIGHT PINK** data card for the 2025 show which are available from your local extension office. Entries not using this card will be disqualified. Entries must be made by variety name. All entries must be combine-run, as handpicking and/or screening is not allowed. Since all varieties in a class will be competing against each other, a producer may enter a maximum of (2) two different varieties per class, per farm unit and be paid premiums. The wheat exhibited will become the property of the Kansas State Fair.

These entries will be eligible for the Sweepstakes Award if the exhibitor participated in their local county market wheat show.

The International Association of Operative Millers will sponsor a plaque to the agent with the most placing entries.

**MARKET WHEAT SAMPLE MUST ALREADY BE IN A CONTAINER WHEN SUBMITTING TO THE KANSAS STATE FAIR.**

**\*\*Must name variety at time of entry**

### Class

1. All Hard White Wheat Varieties
2. All HRW Blends
3. All Other Private HRW Varieties or Hybrids

4. All WestBred / Monsanto / HRW Varieties
5. KSU HRW Varieties
6. Other Public HRW Varieties

## Division 116 – Market Wheat Sweepstakes

### Division 116 - Market Wheat Sweepstakes

*Sponsored by Kansas Wheat Commission*



**Premiums awarded for this division are 1st - \$25 each.  
Champion ribbon and rosette will be given to the winner in each class.**

Entries to Sweepstakes classes must have participated in the local county Market Wheat Show if one was held. Counties with a Market Wheat Show are asked to forward their county champion information to their area representative Martin Gleason, [mgleason@ksu.edu](mailto:mgleason@ksu.edu); 620-659-5095 or Kurt Werth, [kwert@ksu.edu](mailto:kwert@ksu.edu); 620-255-0390 .

All entries will need to be entered online at [www.kansasstatefair.com](http://www.kansasstatefair.com). If you have any questions regarding the entry process, please contact the KSF Competitive Exhibit Department at 620-669-3621.

Placings will be determined by the Market Wheat scores. Individual entries must have their entry and completed form to the Kansas State Fair to Agents are reminded that all wheat samples must be delivered to the Kansas State Fair by 10:00 am on September 2, to be considered for the Sweepstakes awards.

#### Class

1. Eastern Kansas County Winners: Includes all counties with Hwy 81 going through it and East
2. Western Kansas County Winners: Includes counties West of Highway 81

## Division 117 – Other Crops

### Division 117 - Other Crops

**Premiums awarded for this division are 1st - \$20, 2nd - \$15, 3rd - \$10.**

Any other crops that are not listed in a previous class such as cotton, pearl millet, etc. Exhibitor must submit (5) heads or plants for judging.

#### Class

1. Any other crop not listed (Ex: cotton, pearl millet) \*\*Must submit 5 head or plants

# Division 118 – Soybean Plant Show

## Division 118 - Soybean Plant Show

Premiums awarded for this division are 1st - \$30, 2nd - \$25, 3rd - \$20, 4th - \$15, 5th - \$10. Champion Soybean Plant will receive \$100 and a rosette.

Requirements: (5) five plants with roots

attached. Suggestions for selecting plants:



- When in the field looking for plants, dig more plants than are required (8-10 suggested).
- What to select for: More mature plants, consider taller plants with the most pods, free from insect damage and disease, no off-color leaves, plants that are uniform, pod size and fill.
- Dig the plants and wash off the roots (pulling plants will lose root nodules, which are important in judging soybean plants).
- Once plants are selected and dried, loosely tie the plants together at base of the plant or just above the root system. Loosely roll plants in a few layers of newspaper for transport to the fair.
- A farming unit may have (2) two entries, but they must all be of different varieties. Each entry must have the required (5) five plants.

**\*List company and variety names at time of entry (list in description)**

### Class

1. Maturity Class II
2. Maturity Class III
3. Maturity Class IV
4. Maturity Class V

# Division 119 – Soybean Seed

## Division 119 - Soybean Seed

*Sponsored by Kansas Soybean Commission*

Premiums awarded for this division are 1st - \$20, 2nd- \$15, 3rd - \$10. Division Champion will receive \$100 and a rosette.



The Soybean Seed classes are composed of major companies that service Kansas soybean producers and popular varieties. If a brand name or public variety runs strong in the "any other variety class" in a particular year, it will be placed in the Department Manager's Option Class. It will also be considered the next year to replace a variety decreasing in entries. A producer may enter (2)

two different varieties per class, per farm unit and be paid premiums. An exhibit shall consist of (15) fifteen pounds of soybeans harvested in 2023 or 2024. Handpicked samples are encouraged.

\*\*Youth entries are not eligible to receive seed prizes if offered.

### Class

1. Bayer Crop Science\*
2. Delange\*
3. Dyna-Gro\*
4. Golden Harvest\*
5. Midland Genetics\*
6. Ohlde\*
7. Pioneer – Corteva Agrisciences\*
8. Any Other Variety\*

## Division 120 – Sunflowers in Heads

### Division 120 - Sunflowers in Heads

Premiums awarded for this division are 1<sup>st</sup> - \$20, 2<sup>nd</sup> - \$15, 3<sup>rd</sup> - \$10 Division Champion will receive \$10 and a rosette.

No repeat of previous exhibits. May have (2) two entries in classes 01 & 03 but must be different varieties.

### Class

1. Confectionary Sunflowers - 3 Heads
2. Largest Tame Sunflower
3. Oil Sunflowers - 3 Heads

## Division 121 - Wheat

### Division 121 - Wheat

*Sponsored by Kansas Wheat Commission*

Premiums awarded for this division are 1<sup>st</sup> - \$50, 2<sup>nd</sup> - \$40, 3<sup>rd</sup> - \$30.

Division Champion will receive \$100 and a rosette.

All exhibits in the wheat classes shall consist of (20) twenty pounds of wheat in any container. All entries must be made under the variety name. The entries will be grouped according to the

classification under awards. Hand-picked samples are encouraged.

**Variety must be named at time of entry.**

**Class**

1. All Agri-Pro / Syngenta HRW Varieties
2. All Hard White Wheat Varieties
3. All Other Varieties or Hybrids
4. All West Bred HRW Varieties
5. KSU HRW Varieties
6. Other Public HRW Varieties



## Division 122 – Culinary Herbs

HORTICULTURE CLASSES

**Division 122 - Culinary Herbs**

**Premiums awarded for this division are 1st - \$15, 2nd - \$10, 3rd - \$5.**

Fresh culinary herbs (6) six (example: parsley, basil, dill), six (6) stems (or a comparable) quantity of (1) ONE variety of fresh herbs exhibited in a disposable container of water. Dried herbs are not accepted. May have (2) two entries but must be different variety.

Variety must be named at time of entry (list in description)

Judging Criteria	
Color	20
Freedom from Blemish	30
Size	15
Uniformity	20
Variety Character	15

**Class**

1. Basil
2. Chives
3. Dill
4. Oregano
5. Parsley
6. Any other culinary herb not listed (name of herb is required)

## Division 123 - Fruit

### Division 123 - Fruit

Premiums awarded for this division are 1st - \$15, 2nd - \$10, 3rd - \$5.  
Division Champion will receive \$20 and a rosette.

#### Class

1. Apple - Crab - Any Variety (5 specimens)
2. Apple - Delicious (5 specimens)
3. Apple - Gala (5 specimens)
4. Apple - Golden Delicious (5 specimens)
5. Apple - Grimes (5 specimens)
6. Apple - Jonathan (5 specimens)
7. Apple - Rome Beauty (5 specimens)
8. Apple - Stayman Winesap (5 specimens)
9. Apple - Winesap (5 specimens)
10. Apple - Variety Other Than Listed- (20-25 packed in single trays)
11. Blackberries - 1 pint
12. Peaches - Any Variety (5 specimens)
13. Pears - Any variety (5 specimens)
14. Plums - Any variety (5 specimens)
15. Raspberries - 1 pint

Judging Criteria	
Color	20
Freedom from Blemish	30
Size	15
Uniformity	20
Variety Character	15

## Division 124 – Giant Pumpkin & Giant Watermelon

### Division 124 - Giant Pumpkin and Giant Watermelon Contest

*Sponsored by Elliott Mortuary - Hutchinson*

Premiums awarded for this division are Champion Pumpkin - \$800 and a rosette, 2nd- \$500, 3rd - \$400.

Champion Watermelon - \$500 and a rosette, 2<sup>nd</sup> - \$300, 3<sup>rd</sup> - \$200.

\*An additional \$100 premium will be paid in each class if the winner sets a new record .

Current Pumpkin record is 1,280 lbs. (2022)

Current Watermelon record is 223.5 (2019)

A Rookie Giant Pumpkin premium is available to the exhibitor with a first-year entry in this category and a pumpkin weighing over 400 lbs. - \$50 and a watermelon weighing over \$100 lbs.



Show your "Pride of Kansas" and earn bragging rights for having the Giant Pumpkin or Giant Watermelon at the Kansas State Fair!

- All giant pumpkins over 400 pounds **must be delivered to the fair on WEDNESDAY, September 3, from 7:00 pm to 8:00 pm** to be unloaded using a mechanical lift. To help monitor entries, if your pumpkin is over 400 pounds, please notify the Agriculture Department Manager or contact our office in advance, 620-669-3600. Pumpkins 400 pounds and over must be on a pallet and a pumpkin sling is recommended for each entry. **Pumpkins 400 pounds and over will be loaded at 7:00 pm on the final Sunday.** Pumpkins over 400 pounds and delivered at another time will be required to hire their own forklift to off load their pumpkin and weights may not be taken because scales may not be available. Cost is approximately \$40-\$50.
- Large watermelons may be delivered on **Wednesday, September 3, from 7:00 a.m. to 8:00 p.m.** if assistance is needed to unload.
- Side stems must be cut to 1".
- All pumpkins and watermelons must be in good, healthy condition, without damages, free of cracks, splits or holes.
- All pumpkins and watermelons must be free from any foreign materials such as caulking, skin additives, fungicides, etc.
- Damaged pumpkins or watermelons having been repaired will not be accepted.
- **Premiums in this Division will only be paid if exhibits meet a minimum weight:**  
Pumpkins minimum weight to receive an award is 400#  
Watermelon minimum weight to receive an award is 100#

### Class

1. Giant Pumpkin Contest (determined by weight)
2. Giant Watermelon (determined by weight)

Weigh-In verified by Travis Scale Company

**Weigh-in of the Giant Pumpkins and Giant Watermelons will be on Wednesday, September 3, starting at 7:00 p.m.**

ELLIOTT MORTUARY &  
CREMATORY

Family Owned & Operated Since 1935



## Division 125 – Largest/Longest/Tallest

### Division 125 - Largest / Longest / Tallest

*Kansas Corn Sponsor Div. 3-4*

Premiums awarded for this division are 1st - \$15, 2nd - \$10, 3rd - \$5. Division Champion will receive \$50 and a rosette.

#### Class

1. Cabbage - Largest, \*determined by weight
  2. Carrot - Longest, \*determined by length
  3. Corn Ear - Longest, \*determined by length
  4. Corn Stalk - Tallest, \*determined by height
  5. Grain Sorghum Head - Longest, \*determined by length
  6. Green Bean - Longest, \*determined by length
  7. Pepper - Largest, \*determined by weight
  8. Potato - Largest, \*determined by weight
  9. Sunflower Stalk - Tallest, \*determined by height
  10. Tomato - Largest, \*determined by weight
  11. Zucchini – Largest, \*determined by weight
- Watermelon – Moved to Division 124**



## Division 126 – Squash, Pumpkins & Watermelons

### Division 126 - Squash, Pumpkins & Watermelons

Premiums awarded for this division are 1st - \$15, 2nd - \$10, 3rd - \$5.

**Champion Pumpkin (Classes 1 – 4) Ribbon**

**Champion Squash (Classes 5-13) Ribbon**

**Champion Watermelon (Classes 14-19) Ribbon**

**Winner of Governor's Watermelon Sweepstakes (Class 20) will receive a ribbon and will present melon to Governor on Governor's Day.**

\*\*Make sure to see if (1) or (2) specimens are required.

#### Class

1. Pumpkin or Fall Squash - Any other variety not listed (1)
2. Pumpkins - Large Field (2)
3. Pumpkins - Miniature (2)

4. Pumpkins - Small Sugar (2) \* under 10 lbs.
5. Squash - Butternut (2)
6. Squash - Cushaw (2)
7. Squash - Hubbard (2)
8. Squash - Summer (any variety) (2)
9. Squash - Table Queen or Acorn (2)
10. Squash - Winter (any variety) (2)
11. Squash - Yellow (2)
12. Zucchini - Baking (longer than 10") (2)
13. Zucchini - Slicing (under 10" long) (2)
14. Watermelon - Icebox Type (under 10 lbs) (1)
15. Watermelon - Long Green (1)
16. Watermelon - Long Grey (1)
17. Watermelon - Long Striped (1)
18. Watermelon - Round Green (1)
19. Watermelon - Round Striped (1)
20. Governors Watermelon Sweepstakes - (4) melons of (2) or more varieties. \*\*Winner to present melon to Governor on Governor's Day

Judging Criteria	
Color	20
Freedom from Blemish	30
Size	15
Uniformity	20
Variety Character	15

## Division 127 - Vegetables

### Division 127 - Vegetables

Premiums awarded for this division are 1st - \$15, 2nd - \$10, 3rd - \$5.

Division Champion will receive \$25 and a rosette.

#### Class

1. Beans - Lima: Shelled (1 cup) of pods (10)
2. Beans - Snap; Green or Yellow (10)
3. Beets - Table (5)
4. Broccoli (2 bunches)
5. Cantaloupe / Muskmelons or Related Melons (2)
6. Carrots (5)
7. Cauliflower (2)
8. Cucumbers - Pickling (5)
9. Cucumbers - Slicers (5)
10. Eggplant (2)
11. Garlic (5)
12. Onion - Red, (5)
13. Onion - White, (5)
14. Onion - Yellow, (5)
15. Okra (5)
16. Peppers - Anaheim (5)
17. Peppers - Banana (5)
18. Peppers - Cayenne (5)
19. Peppers - Habanera (5)

Judging Criteria	
Color	20
Freedom from Blemish	30
Size	15
Uniformity	20
Variety Character	15

20. Peppers - Jalapeno (5)
21. Peppers - Mango or Bell (5)
22. Peppers - any other hot variety not named \*Must specify type (5)
23. Potatoes - any Gold variety (5)
24. Potatoes - any Red variety (5)
25. Potatoes - any Russet variety (5)
26. Potatoes - any White variety (5)
27. Potatoes - Sweet, any variety, (5)
28. Tomatoes (5)
29. Tomatoes - Roma (5)
30. Tomatoes - Cherry or Ornamental (8)
31. Turnips - fall grown (5)
32. Unusual vegetable in shape or size

## Division 128 – Vegetable Collections

### Division 128 - Vegetable Collections

Premiums awarded for this division are 1st - \$25, 2nd - \$15, 3rd - \$10.

\*Exception is Class #10 which will award 1st - \$50, 2nd - \$30, 3rd \$15.

Division Champion will receive \$25 and a rosette.

Farm Produce Display - will have approx. 2' x 2' area to display in. In selecting vegetables for exhibit the following should be considered: condition, uniformity of size and color, free from blemishes, disease and insect damage, and trueness to variety type.

The following classes are judged on the produce “plus” the arrangement display / presentation. Be creative on your presentations. \*\*Check requirements

Judging Criteria	
Color	20
Freedom from Blemish	30
Size	15
Uniformity	20
Variety Character	15

### Class

1. Collection of Apples - Submit (12) apples. Must have between 3 – 5 varieties in collection.
2. Collection of Gourds (an exhibit of at least 3, but no more than 7. Gourds to be judged on the display)
3. Collection of Herbs - must have 10 different varieties
4. Collection of Peppers - must include at least 1 hot & 1 sweet variety (4 specimens ea.) 3 varieties required
5. Collection Potatoes - Variety (3 varieties, 3 each)
6. Collection of Pumpkins - 3 Varieties (1 of each)
7. Collection: Red, Yellow and White Onion (3 of each variety)
8. Collection of Watermelons, 3 varieties – (1 ea)
9. Collections of Winter Squashes of 3 varieties (1 of each)
10. Farm Produce Display - display 4 - 10 different kinds of produce in a container turned on side as though basket was spilled, not arranged. Container size can be no larger than a bushel. Exhibit must be arranged by exhibitor & observed by the Agriculture Staff during process.

# Division 129 – Corn Husking Contest

**Division 129 – Corn Husking Contest –**  
*Sponsored by Kansas Corn*

**ON SITE CONTEST**

*The contest will be held at the **HOUSE OF CAPPER Building**, located east of the Administration Building.*

**Check in – Saturday, September 13, 12:30 – 12:45 p.m.**  
**Contest: Saturday, September 13, 1:00 p.m.**



Join in the fun and see how many ears of corn you can shuck.  
Whoever husks their stack of corn the fastest wins!

**Premiums awarded for this division are Classes 01 & 02 - 1st - \$15, 2nd - \$10, 3rd - \$5.**

**\*ENTRY FEE: \$1.00 - Pre-entry is recommended to guarantee space. On-site registration is allowed if space is available. Limited to ten (10) entries in each class. On-site registration will be accepted 15 minutes prior to contest at the Capper Building.**

On day of contest, check-in at the **HOUSE OF CAPPER**, located across from the Administration office, by **12:45 p.m. on Saturday, September 13, 2025**. If contestant is a minor, parent must be available, and on-site during the competition, but are not allowed in the competition area during the contest.

1. Adults - \*Must be age 18 after Jan.1, current year.
2. Youth - \*Must be under the age of 18 before Jan 1, current year

# *Thank You Sponsors*

- **Elliott Mortuary – Hutchinson**
- **Holiday Inn Express - Hutchinson**
- **Kansas Corn**
- **Kansas Dairy**
- **Kansas Forage & Grassland – Chanute**
- **Kansas Health Soil Alliance**
- **Kansas Honey Producers**
- **Kansas Soybean Commission - Manhattan**
- **Kansas Wheat Commission – Manhattan**
- **Tailored Roofing – Wichita**
- **Travis Scale – Wichita/Liberal**

**\*\*If you are interested in becoming a sponsor, please contact the Department Manager or phone the Competitive Exhibits Dept. @ 620-669-3621**