

LAKE COUNTY 4-H ARTS & CRAFTS

Superintendent: Dallas Meringolo
Extension Agent II, 4-H Youth Development
(352) 343-4101 hendersond@ufl.edu

Lake County Fair 2025

GENERAL RULES & REGULATIONS

Lake County 4-H Membership Requirement

This department of the Lake County Fair is open to bona fide members of Lake County 4-H. All 4-H members exhibiting must be in good standing as certified or approved by the 4-H Extension Agent and meet the criteria specified for the exhibit category. This is the only building that 4-H'ers may exhibit items in, with the exception of baked goods which may be entered in the Creative Living Barn.

Quality Exhibits, Liability, and Refusal Rights

All exhibits must be in good condition and presentable. Each exhibited article must be owned, produced, or made by the exhibitor and completed after May 1, 2024. Refusal rights: Lake County 4-H reserves the right to refuse inappropriate or unsuitable entries. The Lake County Fair and 4-H program will not take responsibility for lost, damaged, or misdirected forms, entries, or exhibits

Judging

The judge's decision on all exhibits is final. The modified Danish System of Judgment will be used to determine awards. **Cloverbud entries will not be judged but will receive a participation ribbon.**

Premiums

Premium money will only be paid for items picked up by 6:00 PM on Monday, April 14, 2025. Premium money is as follows: **Blue** - \$ 3.00 | **Red** - \$ 2.00 | **White** – Participation Ribbon

Best in Lot: Rosette and \$10.00

Best in Class: Rosette and \$15.00

Best in Show: Rosette and \$30.00

- Exhibitors will only be paid the highest premium of the award level. For example, Best in Class will receive \$15.00, but if an item wins Best in Class and Best in Show, it will receive \$30.00.



- Best in Lot and Best in Class will not be awarded to every class. These awards may be awarded based on the number of entries and the judge's discretion.

Registration & Drop Off

The entry form is on page 9 of the premium book. It must be turned in with all items on Monday, March 31, 2025, the day of check-in. All entries will be turned in on check-in day: **Monday, March 31, 2025, from 3:00 p.m. to 7:00 p.m.**

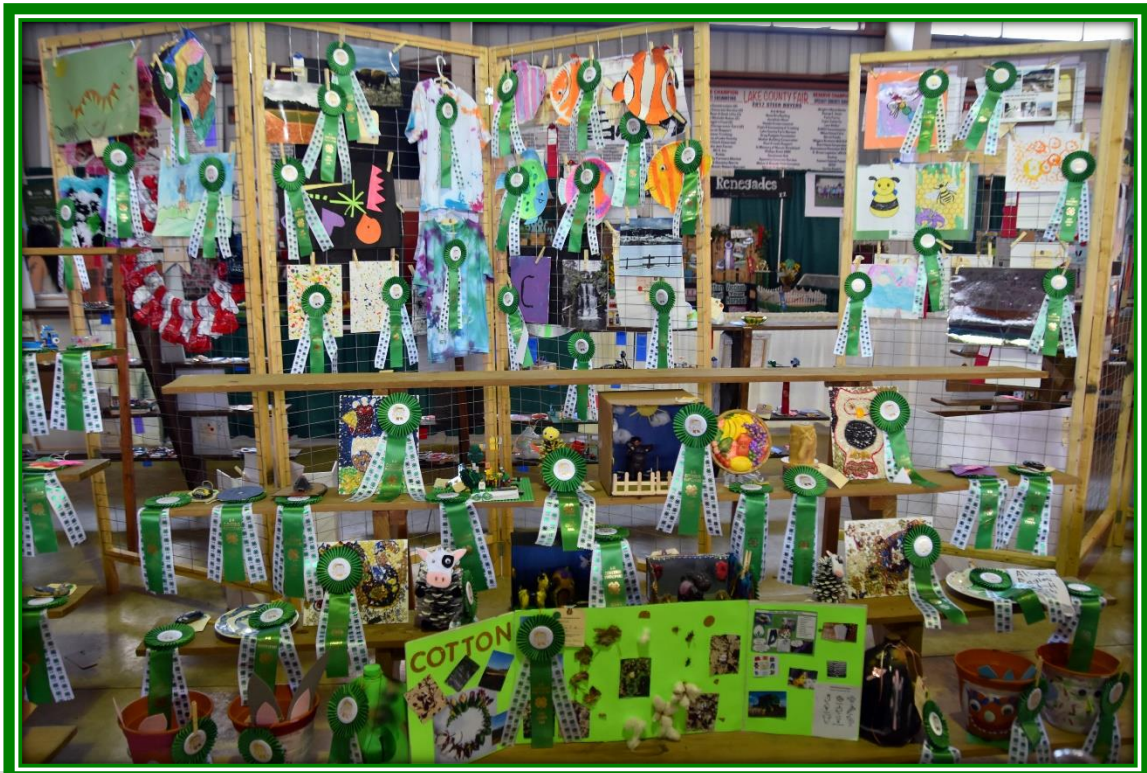
Check-out

Monday, April 14, 2025, from 9:00 AM to 6:00 PM.

Entries picked up before or after the pickup times, without prior arrangements with the 4-H Faculty and Staff, will result in the retention of the exhibitor's premium money. Items not picked up by **6:00 PM on Monday, April 14, 2025**, will result in the retention of the exhibitor's premium money.

Lake County 4-H Challenge

The challenges are located at the end of the premium book. Registration for these challenges is through Google; the link will be included with the challenge. Registration dates vary. All challenges will be turned in on check-in day: **Monday, March 31, 2025, from 3:00 p.m. to 7:00 p.m.**



CLASSES & LOTS

Class A: Cloverbuds

Cloverbuds may participate and enter items into the 4-H Building. Only ribbons will be awarded to Cloverbuds; no premium money will be distributed. Cloverbuds will receive one (1) rosette award; the remaining items will receive a flat ribbon.

Class B: Horticulture

- Cut flowers and bedding plants must have been grown by the exhibitor.
- Plants must be labeled with the common name.
- Specimens must be of exhibition quality. All specimens must be clean, free of insects and disease, and well-groomed with no dead leaves. Containers must be in good condition. To facilitate watering, all plants must be provided with a tray.
- The superintendents reserve the right to reject, limit, or disqualify entries.
- Youth exhibitors are responsible for watering their plants.
- Produce will not be stored in a fridge.
- Only one (1) entry per lot.

LOT

1. Vegetables – Plant
2. Vegetables – Produce (Picture will be taken after judging; produce will be discarded)
3. Fruit – Plant
4. Fruit – Produce (Picture will be taken after judging; produce will be discarded)
5. Herbs – Potted
6. Herbs - Cut
7. Trees
8. Terrariums – growing plants, driftwood, and figurines may be used
9. Floral Arrangements
10. Ornamental Plants
11. Flowering Plants
12. Fairy Garden (no live plants, artificial plants are acceptable)



Class C: Canning & Food Preservation

- Entries must be in standard clear jars with new rings and seals.
- Jars should be washed and sanitized before processing, labeled to include contents, and date canned.
- Recipes that are USDA-approved are recommended but not required. For a list of USDA-approved recipes, use this link: <https://nchfp.uga.edu/#gsc.tab=0>
- [USDA's Complete Guide to Home Canning | National Institute of Food and Agriculture](#) must be followed.
- Include a recipe with complete directions. Entries will be disqualified if the recipe is not present.
- Two (2) entries per lot.

LOT

13. Vegetables in a 1-pint jar
14. Fruits in a 1-pint jar
15. Jam/Jellies in ½ pint jar
16. Pickles in a 1-pint jar
17. Fruit/Vegetable Butter in ½ pint jar
18. Salsa in a 1-pint jar
19. Freeze Dried Foods (see USDA suggestions)
20. Dehydrated Food Items (fruit/vegetable leather, jerky; see USDA suggestions)

Class D: Decorative Arts

- It may not have been entered previously.
- Only one (1) entry per lot unless noted.

LOT

21. Wreath
22. Wall Hanging
23. Decoupage
24. Stencil Decorated Item
25. Seasonal Decorations
26. Holiday Decorations
27. Mosaics
28. Other items not listed (2)



Class E: Sewing

- Clothing may be sewn, knitted, crocheted, or hand-woven.
- **SUBMIT ALL ITEMS ON HANGERS**
- It will be judged based on its outside appearance and finishing.
- Exhibitors may enter up to two entries per lot.

LOT

29. Clothing
30. Accessories
31. Quilt Square
32. Household Items
33. Hand Quilted
34. Machine Quilted
35. Tied Quilt
36. Crochet, knitted
37. Cross Stitch Article
38. Other items not listed

Class F: Crafts

- It may not have been entered previously.
- Exhibitors may enter up to one (1) entry per lot unless noted.

LOT

39. Jewelry (appropriately mounted)
40. Tie-dyed Article or Decorated T-shirt (must be on a hanger)
41. Leather Article
42. Recycled Art
43. Article of Natural Material
44. Candle or Candle Holder
45. Resin
46. Paper Art
47. LEGOS – Set
48. Painted Rocks
49. 3D Printed
50. Other items not listed (2 entries)



Class G: Wall Art

- It may not have been entered previously.
- Exhibitors may enter up to two (2) entries per lot unless noted.

LOT

51. Acrylic
52. Watercolor
53. Oil
54. Cartoon/Anime (3)
55. Hand Drawing (3)
56. Mixed Media
57. Stained Glass
58. Other items not listed

Class H: Woodworking

- It must be constructed from wood by a member and not just sanded or decorated, i.e., assembled in some way and not a prefabricated kit.
- Exhibitors may enter up to two (2) entries per lot.

LOT

59. Child's Toy
60. Furniture
61. Bird House or Feeder (not a prefab kit)
62. Wood Burning
63. Other items not listed.

Class H: Forging & Welding

- It must be constructed from metal by a member.
- Exhibitors may enter up to two (2) entries per lot.

LOT

64. Yard Metal (Judged on originality, not welding)
65. Welding (Judged on welding techniques)
66. Forging (Judged on skill/originality)

Class I: Photography

- Exhibitors can submit up to one (1) entry per lot, but no more than 10 photography entries.
- Photos must be printed as an 8X10 photo ONLY; no mounting necessary.
- Blue-ribbon entries can be submitted to the state photography contest. Pictures at the state level must be submitted electronically to the 4-H Agent.

LOT

67. People (Portraits & Figures)
68. Scene (Land, Sea, Sky)
69. Scene (Architecture & City)
70. Scene (Agricultural)
71. Still Life & Things
72. Flowers, Plants, & Trees
73. Animals (Wildlife)
74. Animals (Pets)
75. Animals (Farm Animals)
76. Abstract, Surreal & Non-representational
77. Black & White
78. 4-H Theme
79. Altered Image (Photoshop, etc.)
80. Close Up & Macro
81. Collage
82. Other items not listed (2)

Class J: Animal Fever

- Exhibitors must pay \$5.00 for their Animal Fever figurine.
- Refer to the Lake County 4-H FYI for more registration information.
- The entire entry display may be no larger than 9” x 9” and no higher than 9”. **Any displays that are larger than the specified requirements will be DISQUALIFIED.**
- See the entry form at the end of the premium book.

Class K: Tri-Fold Boards

- Premiums: **Blue** - \$10.00 **Red** - \$5.00 **Club** - \$20.00
- One entry per exhibitor, with entries being created by the 4-H member.
- The tri-fold board must be 28" x 40" to qualify as a tri-fold board. If it is smaller, it should be entered in another class.
- The 4-H emblem must be included somewhere on the exhibit and include citations for sources of information.

Class L: Game Boards

- Premiums: **Blue** - \$10.00 **Red** - \$5.00 **Club** - \$20.00
- One entry per exhibitor/club.
- Maximum board size is 20" x 30", and a 4-H clover must be included.
- The exhibit must include a light to indicate the correct answer.
- The 4-H Office provides suggested materials; contact Dallas Meringolo at hendersond@ufl.edu for more information.
- Game Boards will be judged on the complexity of the board, general appearance, and educational quality.

Class M: Member Demonstration

- Premiums: **Blue** - \$20.00 **Red** - \$10.00
- Open to any Lake County 4-H Member. Only one demonstration per exhibitor and team demonstrations are allowed.
- Time requirements: JR/INT: 3 to 12 minutes; SR: 5 to 12 minutes
- Youth members who give a demo are provided a complimentary ticket to the Lake County Fair. Only participants will receive free admission on the day of their demonstration. **IF A MEMBER RECEIVES A TICKET BUT DOES NOT PRESENT THEIR DEMONSTRATION, THEY WILL FORFEIT ALL PREMIUM MONEY.**
- Exhibitors may present a prepared demonstration in the 4-H demonstration area at any time to adult volunteers at the 4-H booth. 4-H youth must sign in and have two (2) volunteers sign off.
- **Cloverbuds can do a demonstration for participation only. (No premiums are distributed to Cloverbuds.)**





2025 LAKE COUNTY 4-H FAIR ENTRY FORM

Each entry form must be filled out and accompanied by tagged exhibits. Items will be entered on Monday, March 31, 2025, from 3:00 to 7:00 p.m. Exhibit check-out is Monday, April 14, 2025, from 9:00 to 6:00 PM; left items will lose premium money. Any items left will be discarded by Monday, April 21, 2025, unless an arrangement has been made with the 4-H Office.

Member Name: _____

4-H Club: _____

___ Cloverbud (5-7) ___ Junior (8-10) ___ Intermediate (11-13) ___ Senior (14-18)

Class Letter	Lot Number	Description of Article Example: Hand drawing - birds on a fence

Please list any special accommodations the 4-H member might require:

I agree to abide by the 4-H Code of Conduct with all exhibits entered in the 4-H Building at the Lake County Fair. I agree to comply with the published official release time for exhibit removal unless prior approval is given. I understand that premiums will only be given for entries if they are listed on my entry form.

Member Signature

Parent/Guardian Signature



ANIMAL FEVER

Lake County Fair 2025



Design your animal fever for display at the Lake County Fair!

The cost is \$5 per ceramic, one (1) ceramic per 4-H youth.

Register by November 8, 2024, at [Animal Fever Registration](#).

Pick-up starting December 2, 2024.

1. Only one (1) Animal Fever entry per exhibitor.
2. Your animal fever figurine must be on display; the display can be no larger than 9" x 9" x 9". Any larger entries will be disqualified.
3. Cloverbuds are encouraged to participate in the Animal Fever competition, although their entries will not be judged for competition.
4. The exhibitor must complete the exhibit by themselves.
5. Exhibits may be decorated in any style the exhibitor wishes, e.g., paint, cloth, paper, jewelry, feathers, etc., but they must be 4-H appropriate.



4-H CHALLENGES

Lake County Fair 2025

Building Block Challenge

What to do?

In this challenge, you will show your creativity by sharing your design abilities. You will compete against other youth in the same 4-H age division. You will receive a set of LEGOs and must use only the blocks you have been given.

Registration

Register for this challenge by November 8, 2024, at [the Building Block Challenge](#) or use the QR code. The kit costs \$20.00 and can be picked up on December 2, 2024. Completed entries will be submitted on March 31st from 3 to 7 PM at the Lake County Fair.

Guidelines

Your project cannot be larger than 20" x 20" x 20". This includes the board or plywood used to transport the entry. The entry must be transported on a firm, flat surface such as foam board or plywood. Your creation **MUST** be glued to keep the structure secure. Youth must submit a design plan listing the steps of the design process and the overall structure concept. The entry should include a sign displaying their name, county, and age division. *Electronic lights are permitted. Placings are 1st, 2nd, and 3rd; the remaining entries will receive a participation ribbon.

Judging

The following rubric will be used to judge the Building Block Challenge.

	Available Points	Awarded Points
Design	25	
Creativity	25	
Structure	25	
Submitted Plans	25	
Total Points	100	



Premium

The premiums are based on all entries, not age division.

1st: \$50.00 2nd: \$35.00 3rd: \$20.00

Career Connections

Skills developed through this project are connected to many exciting and rewarding careers.



4-H CHALLENGES

Lake County Fair 2025

Birdhouse Challenge

What to do?

In this challenge, you will show your building skills by piecing together a birdhouse. You will compete against other youth in the same 4-H age division using a birdhouse kit, which you will receive and use all materials to build your birdhouse.

Registration

Register for this challenge at [Birdhouse Challenge](#) or use the QR code below. by November 8, 2024. The kit costs \$20.00 and can be picked up on December 2, 2024. Completed entries will be submitted on March 31st from 3 to 7 PM at the Lake County Fair.

Guidelines

You will use the guide and project video to put together your birdhouse. You can paint your birdhouse. Please see the judging rubric below. You will notice that you are judged on how you put the birdhouse together, the strength of your birdhouse, and the creativity from painting your birdhouse. Placings are 1st, 2nd, and 3rd; the remaining entries will receive a participation ribbon.

Judging

The following rubric will be used to judge the Birdhouse Challenge.

	Available Points	Awarded Points
Structure	25	
Creativity	25	
Strength	25	
Total Points	75	



Premium

The premiums are based on all entries, not age division.

1st: \$50.00 2nd: \$35.00 3rd: \$20.00

Career Connections

Skills developed through this project are connected to many exciting and rewarding careers. These include architecture, construction, fine art, art therapy, graphic design, illustration, teaching, industrial design, and museum display.



4-H CLUB CHALLENGES

Lake County Fair 2025

4-H Club Edible Garden Challenge

What to do?

In this challenge, your club receives three 5-gallon buckets. Your club will plan an edible container garden using seeds/starter plants and three 5-gallon buckets. The club must grow a different vegetable in each container. On the 5-gallon bucket, your club will include a recipe and a picture of that recipe to showcase your crops. The club will develop a poster demonstrating the products and steps to grow their edible garden. The registration fee is \$30.00.

Registration

Register for the [Club Edible Garden Challenge](#) or use the QR code below by December 20, 2024.

Guidelines

Clubs will maintain the plants. Seeds and starter plants will be available for pickup on January 15, 2025. Entries will be submitted on March 31, 2025, from 3 to 7 PM at the Lake County Fair.

Judging

The following rubric will be used to judge the Club Edible Garden Challenge.

	Available Points	Awarded Points
Plant Appearance	50	
Recipes	25	
Poster	25	
Total Points	100	



Premium

1st: \$75.00 2nd: \$50.00 3rd: \$30.00

Career Connections

Skills developed through this project are connected to many exciting and rewarding careers, including garden therapy, teaching, and horticulture.



4-H CLUB CHALLENGES

Lake County Fair 2025

4-H Club S.T.E.A.M. Art Challenge

What to do?

In this challenge, your club will design a S.T.E.A.M. art project utilizing the 4-H Theme: “Drive to Thrive: The 4-H Road to Success.”

Registration

Register for the [Club S.T.E.A.M. Challenge](#) or use the QR code below by March 1, 2025.

Guidelines

Clubs will design a S.T.E.A.M. art project using the 2024-2025 4-H theme. Entries will be submitted on March 31, 2025, from 3 to 7 PM at the Lake County Fair.

Judging

The following rubric will be used to judge the Club S.T.E.A.M. Challenge.

	Available Points	Awarded Points
Use of Theme	20	
Artistic Design	20	
Craftsmanship	20	
Creativity	20	
Use of STEAM Components	20	
Total Points	100	



Premium

1st: \$75.00 2nd: \$50.00 3rd: \$25.00

Career Connections

Skills developed through this project are connected to many exciting and rewarding careers. The career fields with this project could include Science, Technology, Engineering, Art, and Mathematics.



4-H CLUB CHALLENGES

Lake County Fair 2025

4-H Club Banner Challenge

What to do?

In this challenge, your club will design and create a club banner.

Registration

Register for the [Club Banner Challenge](#) or use the QR code below by March 1, 2025.

Guidelines

Your club will design and create a club banner. Banners can be made of felt, backed fabric, sign cloth, or a firm fabric sturdy enough to hold its shape. Finished banners should measure 5'W X 3'L and have a 2" casing at the top to make them suitable for hanging. They will be rectangular. Rods will not be provided.

Banners must display the 4-H emblem and the club's name. They will be judged solely on creativity, neatness, theme use, and inclusion of the 4-H emblem. Entries will be submitted on March 31, 2025, from 3 to 7 PM at the Lake County Fair.

Judging

The following rubric will be used to judge the Club Banner Challenge.

	Available Points	Awarded Points
Creativity	25	
Elements of Design	25	
Youth Participation	25	
Following Guidelines	25	
Total Points	100	



Premium

1st: \$30.00 2nd: \$20.00 3rd: \$10.00

