



**MANATEE COUNTY 4-H RECORD BOOK
CLOVERBUD RABBIT PROJECT**

Name _____ Age (on September 1, 2023) _____

4-H Club _____ Years in 4-H _____ Years in Project _____

Date You Started this Book _____ Date You Finished this Book _____
Month Day Year Month Day Year

I certify that I have personally been responsible for the care of this rabbit, I have personally kept records on this project, and I have personally completed this Record Book.

Member Signature _____ Final Date _____ Initials for Fair _____

I (the 4-H member's parent/guardian) certify that my child has personally completed this Record Book, and I have reviewed it for completeness and accuracy of reporting.

Parent/Guardian Signature _____ Final Date _____ Initials for Fair _____

I (the 4-H member's Club Leader) certify that this youth is an active member of their 4-H Club. I have reviewed this Record Book for completeness and accuracy of reporting.

4-H Leader Signature _____ Final Date _____ Initials for Fair _____

FOR USE AT THE MANATEE COUNTY FAIR AND AS THE 4-H PROJECT BOOK

Note: The Manatee County Fair requires that a Care and Feed Record Book (this book) is submitted for any project a youth submits a registration for at the Manatee County Fair. Even if the youth doesn't show at the fair or complete the project, they must still submit a Care and Feed Record Book. If you do not turn in a Care and Feed Record Book to the Fair, you may not participate in the next year's Manatee County Fair.

YOU AND YOUR RABBIT PROJECT

At the beginning of your project: tell us what you plan to do and learn in your rabbit project this year. You can circle the things below, and/or write your own goals:

- Look at different breeds of rabbits
- Learn to identify different breeds of rabbits
- Learn what rabbits eat
- Learn the body parts of a rabbit
- Learn the names of different rabbit equipment
- Learn how to take care of my rabbit
- Watch a rabbit show
- Show my own rabbit
- Share what I have learned about rabbits with another person
- Have fun with my rabbit

INFORMATION ABOUT YOUR RABBIT

Rabbit's Name: _____ Breed: _____

Sex: _____ Eye Color: _____ Coat Color: _____

Special Markings: _____

Hair Length (circle one): Long Short

Rabbit's Age: _____ Date of Birth: _____

Where did you get your rabbit? _____

Draw or place a picture of you and your rabbit here:



FEEDING YOUR RABBIT

Rabbits need to be fed a balanced diet and fresh water every day. The pellets that rabbits eat are made from alfalfa and grain. Do not overfeed your rabbit. Don't leave uneaten food in the dish day after day. Store the food away from sunlight and moisture to keep it fresh. Clean the food and water dishes often to keep your rabbit healthy.

What is the name of the food you feed your rabbit? _____

What are the first 3 ingredients in the food? _____

How much do you feed your rabbit a day? _____

A bag of feed costs _____ and weighs _____

Draw or place a picture of you feeding your rabbit here:



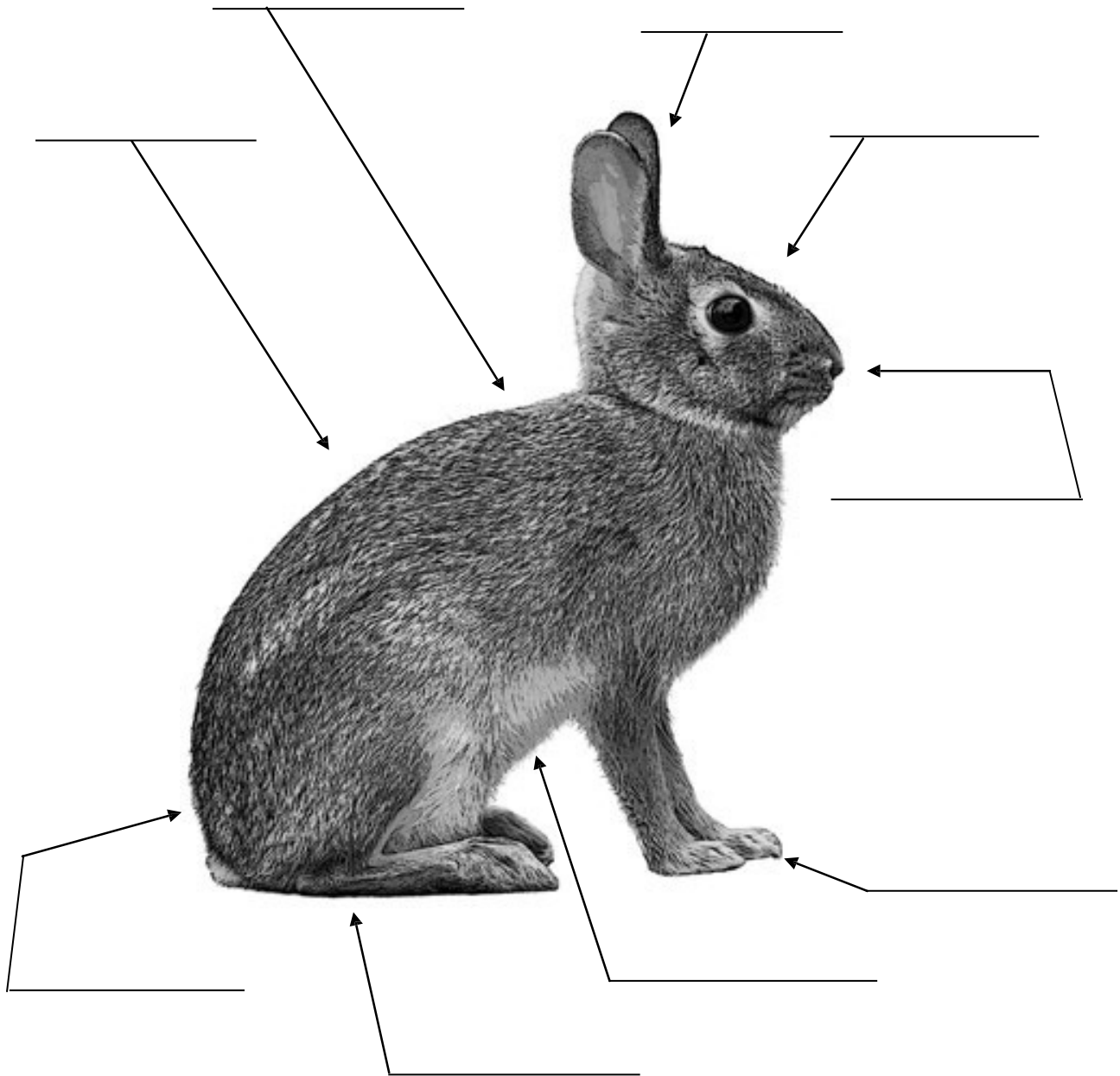
GOOD AND BAD RABBIT FOOD CHOICES

Circle the items that are nutritious and healthy to feed your rabbit. Put an X through the items that are not healthy for your rabbit.

Hint: foods high in sugar are not healthy for rabbits.



IDENTIFY THE PARTS OF A RABBIT



Back	Ears	Nose
Belly	Eyes	Rump
Claws & Toes	Hock	Shoulder

IDENTIFY THE RABBIT EQUIPMENT



- A) Hutch
- B) Carrying box
- C) Feeder
- D) Waterer

- E) Nesting Box
- F) Brush
- G) Nail Trimmer

RABBIT BREEDS

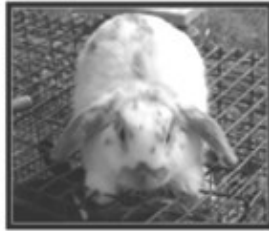
If you see your rabbit's breed, circle it below. If your rabbit's breed is not on this page, write it in the blank and write what the breed's maximum weight should be.

Breed: _____ Maximum Weight: _____



Breed:
Netherland Dwarf

Max. Weight:
Maximum 2.5 lbs



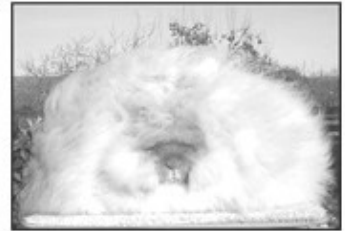
Breed:
Mini Lop

Max. Weight:
Maximum 4 lbs



Breed:
Himalayan

Max. Weight:
Maximum 4.5 lbs



Breed:
English Angora

Max. Weight:
Maximum 7.5 lbs



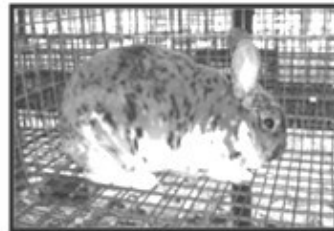
Breed:
Standard Chinchilla

Max. Weight:
Maximum 7.5 lbs



Breed:
Belgian Hare

Max. Weight:
Maximum 9.5 lbs



Breed:
Rex

Max. Weight:
Maximum 10.5 lbs



Breed:
Californian

Max. Weight:
Maximum 10.5 lbs



Breed:
Satin

Max. Weight:
Maximum 11 lbs



Breed:
Flemish Giant

Max. Weight:
No maximum weight limit, but the Flemish Giant can easily reach over 20 lbs!



Information taken from: http://florida4h.org/projects/rabbits/GettingStarted/ARBA_Answers.html

SPECIAL ACTIVITIES RELATED TO MY PROJECT

Did you go to any special events or programs to learn about rabbits or show your rabbit this year? List anything that was important to you in the table below. This could be a rabbit show that you watched or that you showed your rabbit in, or an expo event, or a showmanship clinic.

Date	Event Name	What did you do?

PROJECT PICTURES

Draw or attach two pictures of you practicing a skill with your rabbit (examples could include trimming their nails, practicing showmanship, cleaning their cage). Write a caption explaining what you are doing under each picture.



PROJECT PICTURES



This document, **Manatee County 4-H Cloverbud Rabbit Record Book**, was compiled by Alexandra Draper, 4-H Extension Agent, University of Florida/IFAS Extension - Manatee County, August 2, 2023.

Adapted from: **4-H Rabbit Care and Feed Record Book**, Manatee County 4-H (Revised August 2022).

Clay County Cloverbuds Rabbits & Cavies Record Book, Stephanie Conner (2013).

My 4-H Cloverbud Rabbit Record Book, Brevard County 4-H.