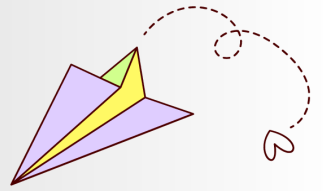




HOW TO ENTER ONLINE



Visit www.nevadacountyfair.com
Click on the dropdown FAIR & Stills Exhibitor Information.
Follow link to Frontrunner to Enter an exhibit.

- STEP 1
- STEP 2
- STEP 3
- STEP 4
- STEP 5
- STEP 6

Click on the link to create an account with Frontrunner
Every exhibitor needs their own account.
Peewee - adults

Choose a Department
Example: Adults Arts & Collections

Choose a Division
Example: Division 101 - Painting

Choose a Class or Classes
Example: Class 1. Acrylic
You can choose multiple classes.
Then scroll to bottom & Click DONE
Answer Additional Questions
Title, Description or Dimensions
(Required to add item(s) to cart)
Example: Yuba River Flows
Click DONE. Then add 1 entry to cart.

To add more entries, continue with Steps 2 - 4. If ready to check out, click **Review & Checkout** button.

Check box to receive a confirmation email

Click on: **SUBMIT ORDER**

Entry Form Deadline:
July 20 at 4 pm

