

POULTRY/MARKET

BROILER MEAT PEN

2024 CHAMPION

Exhibitor: Faith Escato
Buyer: Alain D'Andrade Realtor

2024 RESERVE CHAMPION

Exhibitor: Richard Boyk
Buyer: Simply Country

* Due to H5N1 there were No Poultry Shows in 2025

YOUTH BROILER MEAT PEN

Entry Forms Due By: Monday, July 13 by 4 pm

Receiving and Mandatory Poultry Health Inspection:
Tuesday, August 11 from 10 am - 12 pm

Official Weigh-in: Tuesday, August 11, after Health Inspection

Judging: Thursday, August 13 at 8 am

Entry Fee: \$15 per entry per class

Rules: Applies to all Broiler Meat Pens and Market Turkey Divisions. Open to Nevada County youth only.

- Meat pen exhibitors must be at least nine years old as of January 1, 2026.
- One meat pen may be shown and sold by the exhibitor.
- Small animal meat pen exhibitors may enter a small animal meat pen and one large animal market class. These exhibitors can only sell one project and must declare which animal they will be selling to the Livestock Office as soon as they finish showing their large animal. If the meat pen qualifies as champion or reserve champion, they may not show their large animal in their market class. They will be allowed to show in the large animal showmanship class.
- Market-ready and not-market-ready classifications will be subject to change in the event there are changes made in the Federal grading. See page 82 for full market-ready and non-market ready descriptions.
- All birds must have a leg band on at Check-in and must correspond to band number on entry form.
- Exhibitors are required to be present for weigh-in, for the judging of their animals, and for the Junior Livestock Auction.

NEW Market Poultry (Broiler Meat Pens and Market Turkeys) will not be allowed to participate in Poultry Showmanship.

Division 817 - Broiler Meat Pen

Meat pens consist of two broilers, each weighing a minimum of 3.5lbs and not over 7.5lbs. Broilers will be evaluated on conformation, fleshing, feathering and freedom from down grading factors such as bruises, blisters and skin tears. Broiler meat pens entered must be owned by the exhibitor and be a part of a project under the exhibitor's care and management at least 30 days prior to the opening of the Fair.

Class

1. Broiler Meat Pen

BROILER MEAT PEN AWARDS

Champion Broiler Meat Pen

Buckle Sponsored by
Banner Sponsored by Patrick Eidman
Plaque Sponsored by Nevada County Farm Bureau

Reserve Champion Broiler Meat Pen

Banner Sponsored by
Plaque Sponsored by Agwest Farm Credit

MARKET TURKEY

2024 CHAMPION

Exhibitor: Clara Heer
Buyer: District 4 Supervisor

2024 RESERVE CHAMPION

Exhibitor: Hailey Heer
Buyer: Raleys

* Due to H5N1 there were No Poultry Shows in 2025

YOUTH MARKET TURKEY

Entry Forms Due By: Monday, June 12 by 4 pm

Receiving and Mandatory Poultry Health Inspection:
Tuesday, August 11 from 10 am - 12 pm

Official Weigh-in: Tuesday, August 11, after Health Inspection

Judging: Thursday, August 13 at 8 am

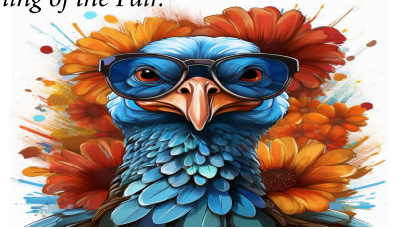
Entry Fee: \$15 per entry per class

Division 818 - Market Turkey

Consists of one turkey. Turkey shall weigh between 15 and 35 lbs. Market Turkeys entered must be owned by the exhibitor and be a part of a project under the exhibitor's care and management at least 60 days prior to the opening of the Fair.

Class

1. Market Turkey



YOUTH MARKET TURKEY AWARDS

Champion Market Turkey

Buckle Sponsored by
Banner Sponsored by
Plaque Sponsored by The Totoonchie Family

Reserve Champion Market Turkey

Banner Sponsored by
Plaque Sponsored by Nevada County Farm Bureau

POULTRY/SHOWMANSHIP

POULTRY SHOWMANSHIP

Entry Forms Due By: Monday, July 13 by 4 pm

Judging: Thursday, August 13, after Market Poultry Show

Entry Fee: Pee Wees No Entry Fee

Novice \$5 • Junior \$10 • Seniors \$15

Rules: Open to Nevada County youth only.

- Poultry Showmanship division is limited to non-market poultry only; market poultry entries will not be accepted
- Pee Wee Showmanship: Exhibitors are five to eight years of age as of January 1, 2026.
- First place Senior Showmanship will compete Saturday, August 15 for Small Animal Master Showmanship.
- See page 81 for showmanship class definitions.
- Animals must be owned by exhibitor and entered by the exhibitor in an appropriate breeding class.
- The preparation for showing must have been done by exhibitor.
- Large class may be divided into smaller groups for ease of handling and judging and to provide the maximum benefits of this learning experience for the Novice and Junior Showman.
- Note: Novice and Junior Showmanship judges may help members improve showmanship techniques while judging and will demonstrate proper procedures.

Pee Wee, Novice & Junior Showmanship

Ribbons Only - 1st through 8th Place

Senior Showmanship - Premiums Offered Per Class

1st	2nd	3rd	4th	5th	6th	7th	8th
\$30	\$28	\$26	\$24	\$22	\$20	\$18	\$16

Division 819 - Poultry Showmanship

Classes

1. Pee Wee
2. Novice
3. Junior
4. Senior



POULTRY SHOWMANSHIP AWARDS

Senior Poultry Showmanship

Buckle Sponsored by

Plaque Sponsored by

Junior Poultry Showmanship

Plaque Sponsored by

Novice Poultry Showmanship

Plaque Sponsored by

Rosettes 1st - 8th Place for all Showmanship Awards

POULTRY/BREEDING

POULTRY/YOUTH BREEDING

Entry Forms Due By: Monday, July 13 by 4 pm

Receiving and Mandatory Poultry Health Inspection:
Tuesday, August 11 from 10 am - 12 pm

All birds must have a leg band on at check-in and must correspond to band number on entry form.

Judging: Thursday, August 13, after Poultry Showmanship Show

Release: Sunday, August 16 from 5 pm to 8 pm

Entry Fee: \$10 per entry per class

Rules: Open to Nevada County youth only.

Two entries per class per exhibitor. No more than eight (8) entries per exhibitor.

- Entries may be limited to cage space available.
- Judging will be by comparison, with the latest edition of the APA Standard of Perfection and the Bantam Standard and shall apply to all district and county fair poultry shows, except in such instances where they are in conflict with the rules and regulations prescribed by the Department of Food and Agriculture.
- A judge may excuse a bird from competition if it appears to be fatigued or out of condition, but the bird shall be counted as an entry.
- For all classes of standard-bred chickens, turkeys, ducks and geese, all birds must be identified by leg bands and conforming with the entry form upon arrival at the show.
- Keys to all locked cages are required to be on file with the Livestock Office.
- Any bird showing evidence of disease and/or parasites will be immediately removed from the Fairgrounds.
- Utility Bred Division - Judging is based two-thirds on utility and one-third on a standard basis.
- No emus, ostriches or other large birds that cannot be safely housed in standard cages.
- Non-market entries are judged in cages. Exhibitors are not to be present during judging of these entries.

Premiums Offered Per Class

1st	2nd	3rd	4th	5th
\$12	\$10	\$7	\$6	\$5

Division 820 - American

Division 821 - Asiatic

Division 822 - English

Division 823 - Mediterranean

Division 824 - Continental

Division 825 - All Other Standard Breeds

Division 826 - Utility Birds

Division 827 - Single Comb Clean Legged Bantams

Division 828 - Rose Comb Clean Legged Bantams

Division 829 - All Other Comb Clean Legged Bantams

Division 830 - Feather Legged Bantams

Division 831 - Modern Game

Division 832 - Old English Game

Division 833 - Bantam Ducks

Division 834 - Lightweight Ducks

Division 835 - Medium-weight Ducks

Division 836 - Heavyweight Ducks

Division 837 - Geese

Division 838 - Game & Exotic

(Must specify breed and variety when entering.)

Classes

1. Cock (1 year or over)
2. Hen (1 year or over)
3. Cockerel (under 1 year)
4. Pullet (under 1 year)



POULTRY AWARDS

Best of Show Poultry

Carrier Sponsored by
Plaque Sponsored by

Reserve Best of Show Poultry

Plaque Sponsored by

Best Large Fowl

Plaque Sponsored by

Reserve Large Fowl

Plaque Sponsored by

Best Bantam

Plaque Sponsored by

Reserve Bantam

Plaque Sponsored by