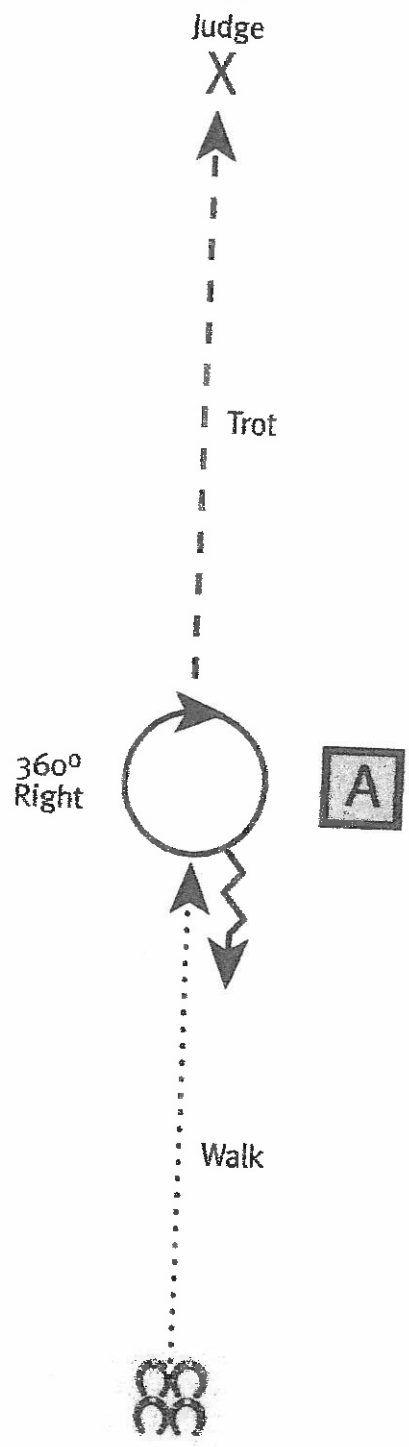


Showmanship

CLASS 36
37



Line up at direction of ringmaster — can be head to tail or side by side.

Walk to marker A.

At marker A, execute a 360-degree turn.

Back four steps.

Trot to judge.

Set up for inspection.

When dismissed return to the lineup at the trot or exit at the trot.

	Stop / Halt
	Canter
	Trot
	Walk
	Back
	Marker
	Lineup

Snowmanship

Be ready at marker A.

Trot from marker A to marker B.

Stop at marker B and back halfway to marker A.

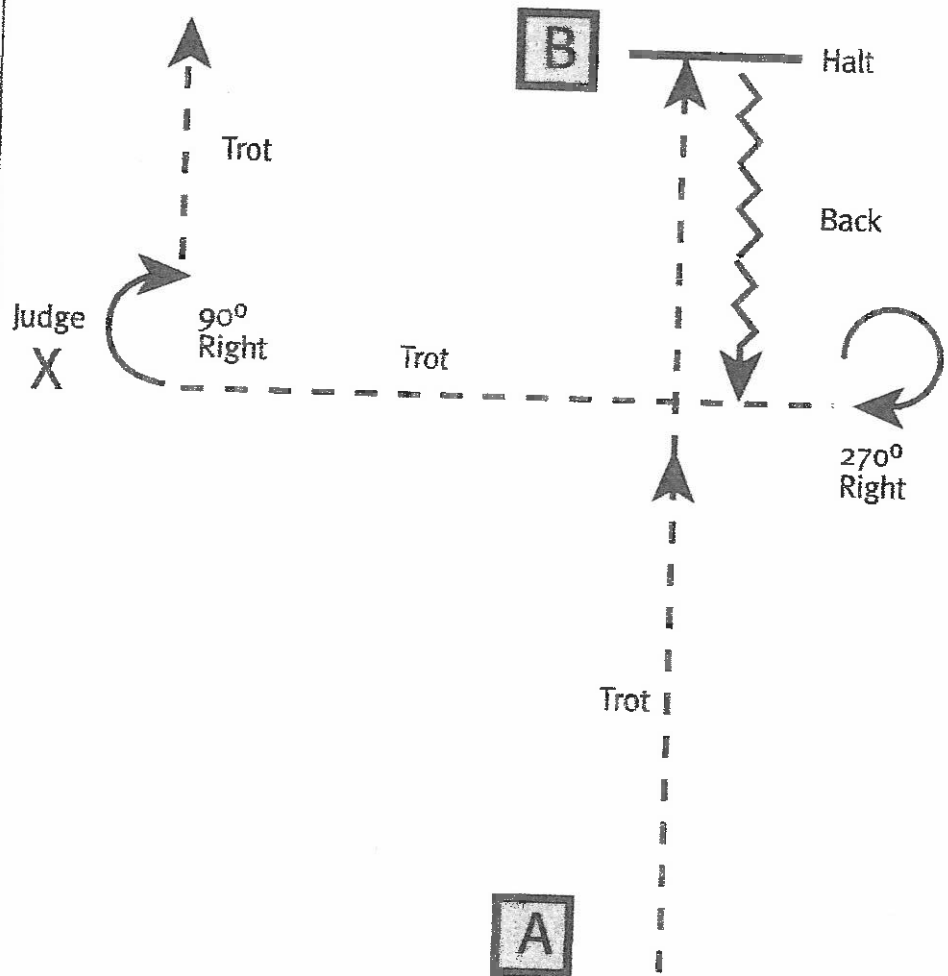
Stop and perform a 270-degree turn.

Trot to judge.

Stop. Set up for inspection.

When dismissed perform a 90-degree turn and trot away as drawn.

Return to the lineup at the trot as directed by the ringmaster or exit at the trot.



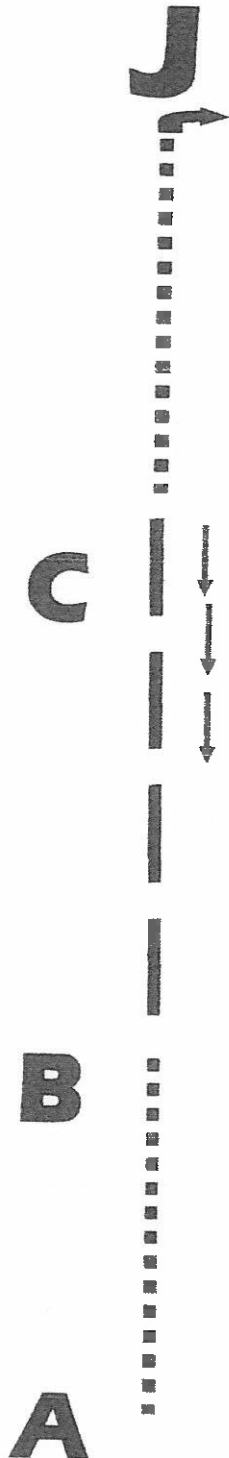
	Stop / Halt
	Canter
	Trot
	Walk
	Back
	Marker
	Lineup

CLASS 38 - 13-17
39 - 18 & over

Ranch
Showmanship

CLASS #75

12 & under

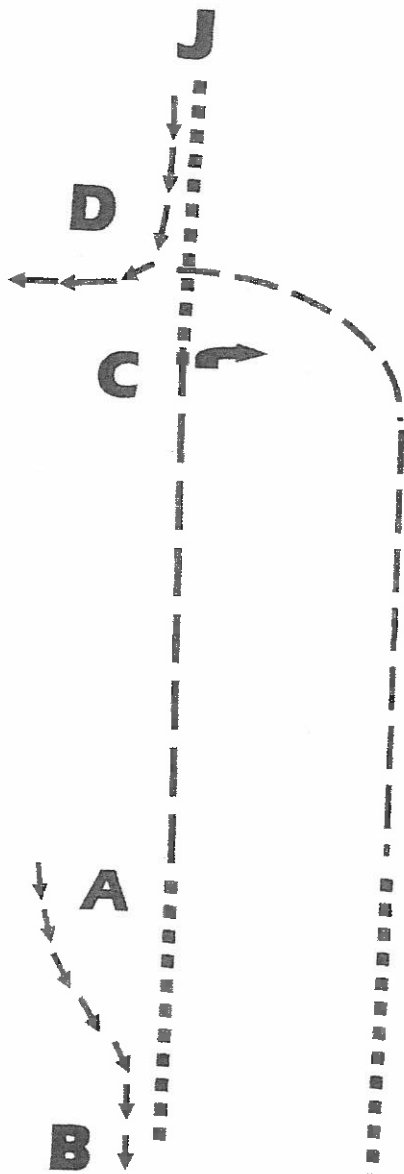


SET-UP AT CONE

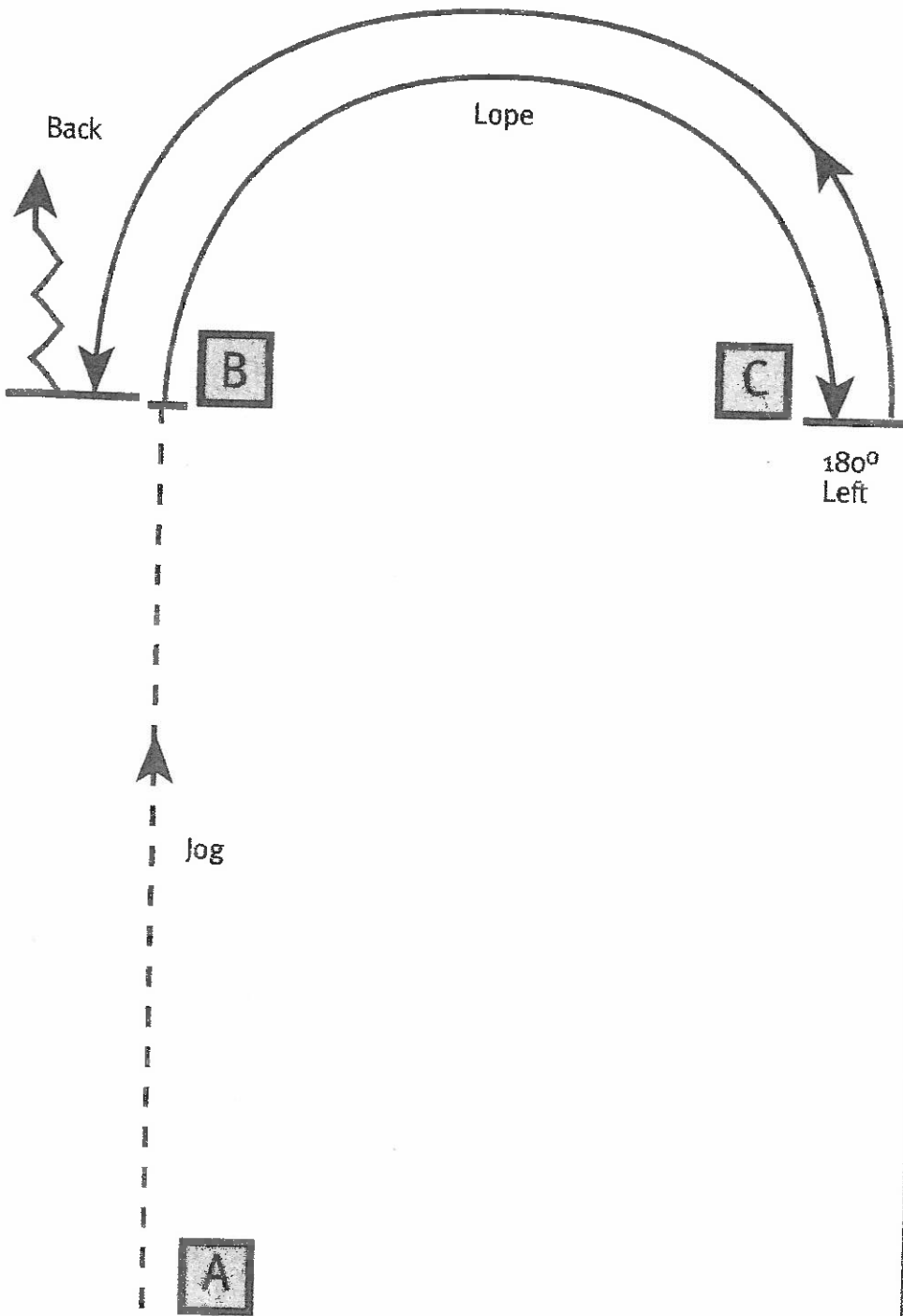
1. Walk to B
2. Trot from B to C
3. Stop @ C
4. Back 3 Steps
5. Walk to Judge
6. Set Up for inspection
7. 90 ° turn to the right
8. Walk Out of Arena

Ranch SHOWMANSHIP

Class 76 13-17
77 18 & over



1. Set-up at A on left side of cone
2. Back to right side of B.
3. Walk to A
4. At A trot to C
5. At C Stop; 360°
6. Walk to Judge
7. Set up for Inspection
8. Back between C - D
9. Trot back to A
10. At A break to a walk; exit pen



Be ready at marker A.

Jog to marker B. Stop.

Lope a semi-circle on the right lead to marker C.

Turn 180-degrees on the haunches to the left.

Lope a semi-circle on the left lead to marker B.

Stop.

Back approximately five steps.

Return to the lineup at the jog or exit the arena at the jog.

	Stop / Halt
	Lope
	Jog
	Walk
	Back
	Marker
	Lineup

This pattern may only be used for:

- 13 & Under
- 14 - 18
- 18 & Under
- 19 & Over

If used at a Regional or National Show, pattern may not be run from the lineup.

Class 84 & 85 12³⁹ & under & 13-17

Be ready at marker A.

Pick up the left lead and lope to marker B.

Stop and pivot 360-degrees on hindquarters right.

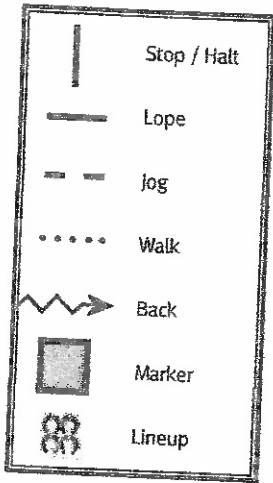
Pick up right lead, lope a circle to right and lope to marker C.

Stop and pivot 360-degrees on hindquarters left.

Pick up left lead, lope circle to the left and lope to marker D.

Stop at marker D and back approximately ten feet.

Return to the lineup at the jog or exit arena at the jog.



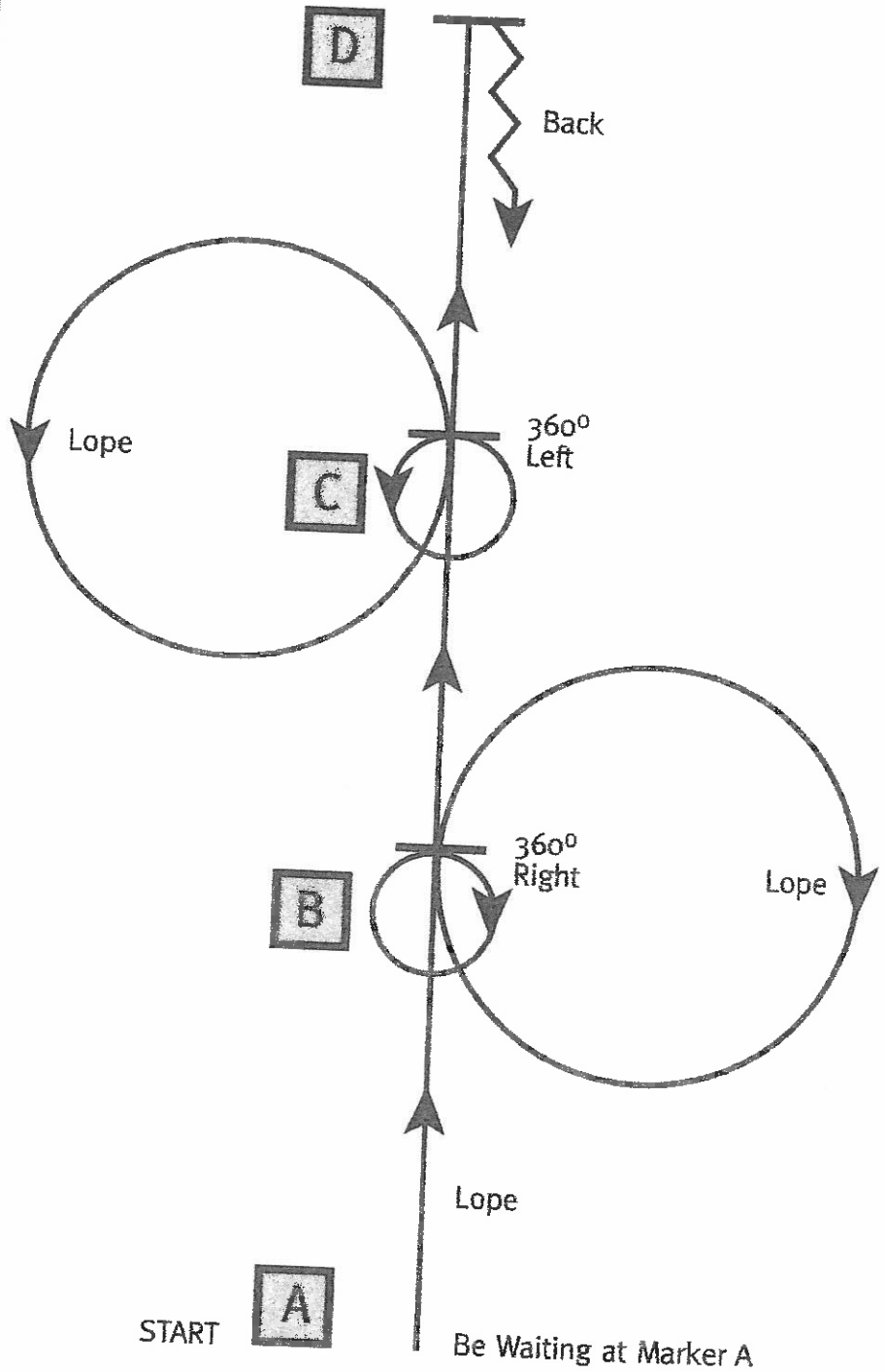
This pattern may only be used for:

- 13 & Under
- 14 - 18
- 18 & Under
- 19 & Over

If used at a Regional or National Show, pattern may not be run from the lineup.

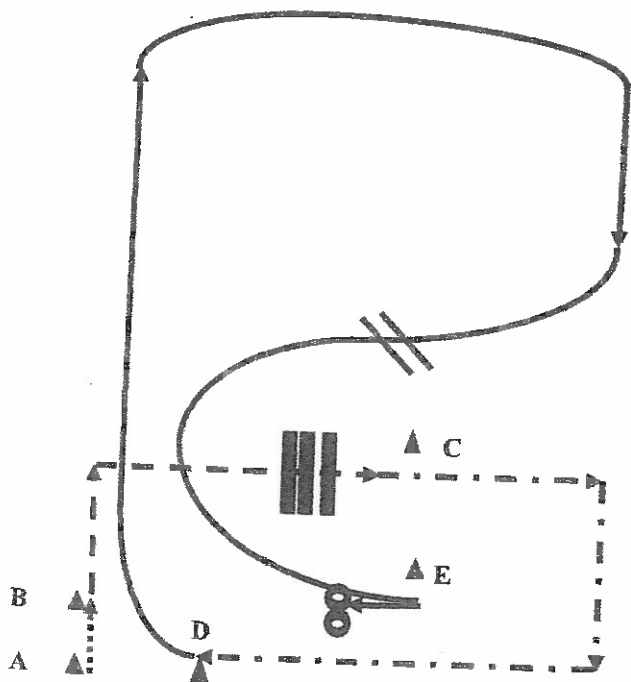
REV 122018

44



CLASS 86 Horsemanship 18 & Over

RANCHMANSHIP PATTERN #6



1. Walk from A to B.
2. At B trot over poles to C.
3. At C extended trot to D.
4. Lope right lead up arena and close circle to center and change to left lead.
5. Lope to right side of cone E and stop; back 8 to 10 feet.
6. Two (2) spins to the left.
7. 2¼ spins to the right.

CLASS

64

87

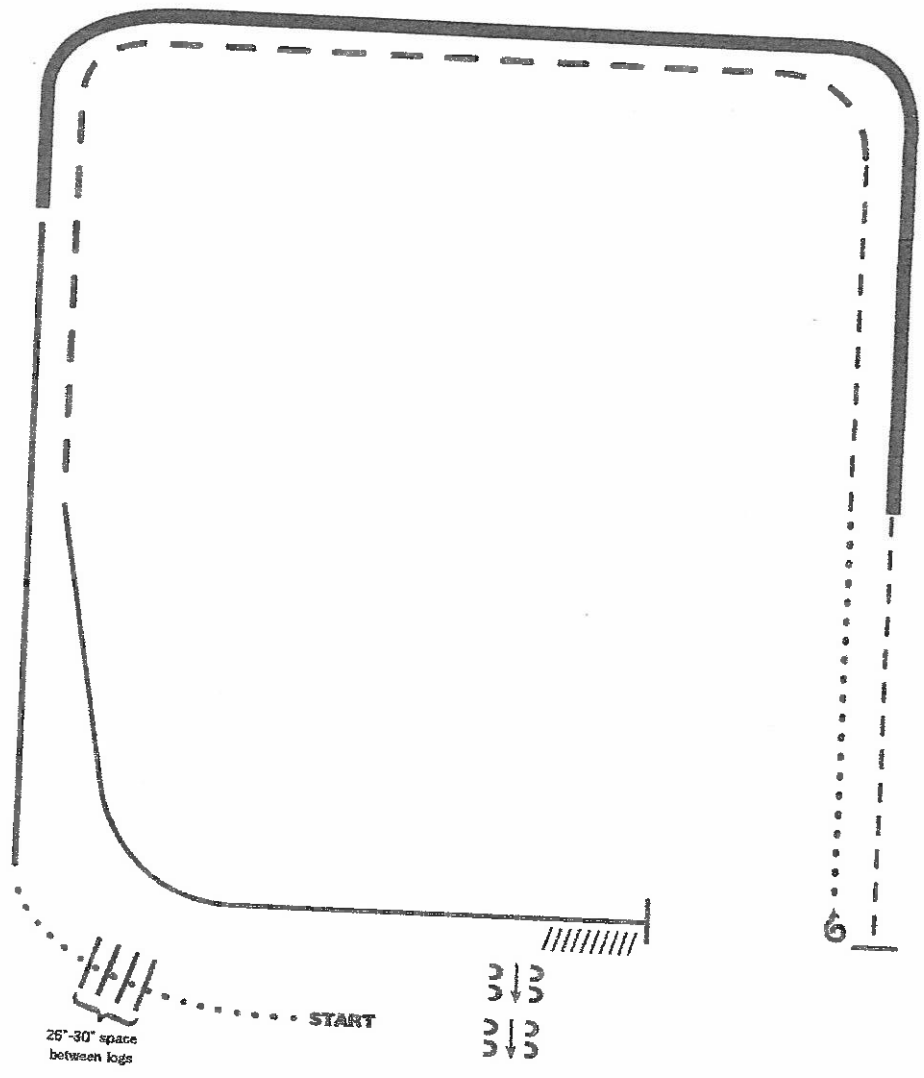
88

Jr Ranchmanship

Sr Ranchmanship

RANCH RIDING - PATTERN 6

- 89 Ranchmanship
12 & under



1. Walk
2. Walk over logs
3. Lope right lead
4. Extended lope (right lead)
5. Trot
6. Stop, 1 1/2 turns right
7. Walk
8. Trot
9. Extended trot
10. Lope left lead
11. Stop and Back
12. Side

3 ↓ 3
3 ↓ 3

6

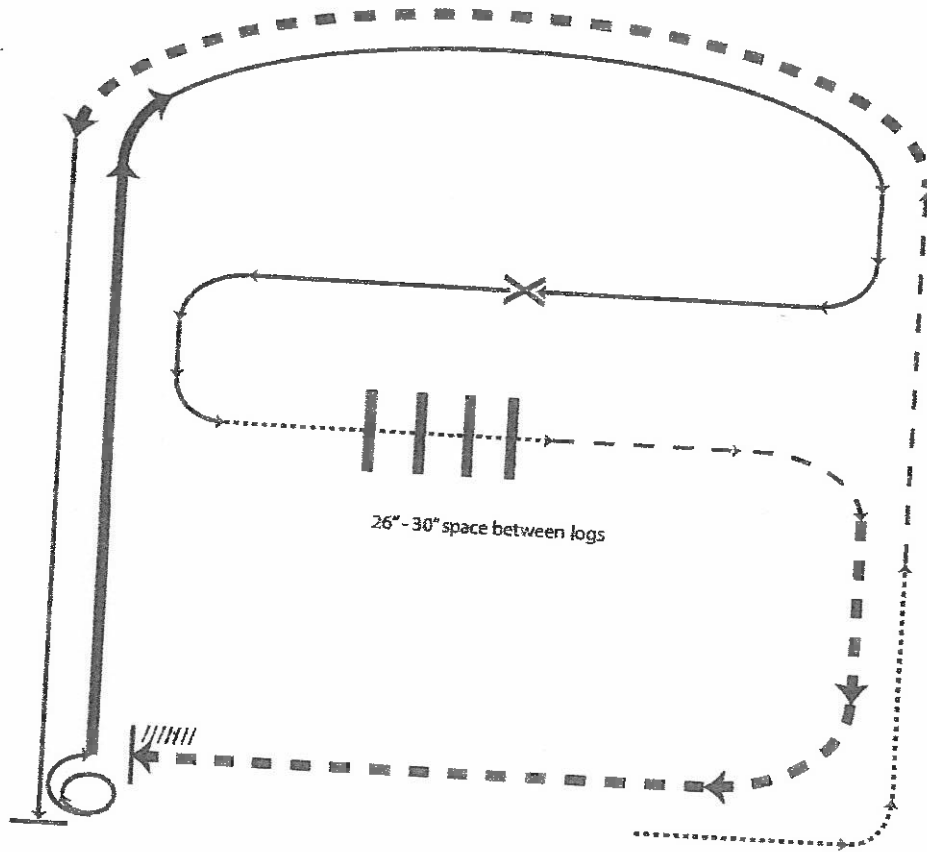
Note: The drawn description of this pattern is only intended for the general depiction of the pattern. Exhibitors should utilize the arena space to best exhibit their horses.

RANCH RIDING - PATTERN 2

Class 90 & 91
Ranchmanship

13-17

18-over



- X Lead Change
- Walk
- - - Trot
- - - Ext Trot
- Lope
- Ext Lope
- /////// Back

1. Walk
2. Trot
3. Extended trot
4. Left lead lope
5. Stop, 1 1/2 turn right
6. Extended lope
7. Collect to working lope-right lead
8. Change leads (simple or flying)
9. W-U