

WELCOME TO THE NORTH IDAHO STATE FAIR!

North Idaho State Fair welcomes you and your family to exhibit, compete and display your work. Anyone can enter but residents of Kootenai, Benewah, Bonner, Boundary, Clearwater, Idaho, Latah, Lewis, Nez Perce, and Shoshone counties are eligible for additional special awards. This Handbook contains guidelines and rules for residents wishing to enter the Open Class Competitive Exhibits and Open Class Livestock.

With more than 20 departments to enter, there are plenty of opportunity to show off your Agricultural, Home Arts and Livestock. If you can make it, take it, grow it or show it, we have a place for you to enter!



SUPPORTING CAST

Kootenai County Commissioners

Bill Brooks

Leslie Duncan

Chris Fillios

North Idaho State Fair Board of Directors

Jerry Johnson, Chair

Elise Burton, Vice-Chair

Joe Doellefeld

David Fair

Miranda Hamilton

Linda Rider

Timothy Vuller

Elizabeth Bower, Alternate

North Idaho State Fair Staff

Alexcia Jordan, General Manager

Shanda Masterson, Assistant General Manager

Veronica Knowlton, Special Programs & Marketing Manager

Evan Underwood, Office & Sales Manager

Andrea Tyler, Finance Manager

Jane Holte, Entertainment Coordinator

Allan Dykstra, Facilities Manager

Laura Burrow, Event & Grounds Assistant

Todd Feusier, Grounds Electrician

Adam Vince, Facilities Assistant

Jesse Welsh, Event Assistant

North Idaho State Fair

4056 N Government Way ~ Coeur d'Alene, ID 83815

OFFICE HOURS: 9AM TO 5 PM ~ Open year-round!

Fair Office is located in the southeast corner of Building 1.

Fair Hours: 8 am to 8 pm

Non-Fair Hours: 8 am – 5 pm Monday – Friday

E-mail: entries@northidahostatefair.comWebsite: www.NISFair.fun**GENERAL INFORMATION**

FAIR DATES:

August 20 – Opens at 3 PM to August 29 closes at 7 PM

GATES OPEN:

Weekends at 10 AM Weekdays at 11 AM

Close Daily at 10 PM

Exhibit Buildings close daily at 10 pm

Email: fair@northidahostatefair.com - Phone: 208-765-4969 - Fax: 208-765-3168 - www.NISFair.fun**ADMISSIONS****Fair Gate Admission**

- Adults (13-59 years old) \$10
- **ADVANCED** Adults (13-59 years old) \$8
- Seniors (60+ years old) \$8
- Military (with valid ID) \$8
- Youth (6-12 years old) \$8
- **ADVANCED** Senior / Youth /Military \$6
- Kids 5 years old & under Free

Parking

- One-day Parking \$5
- Ten-day Parking \$30
- VIP Parking (10-day, appointed spot) \$75

Carnival

- Single Ticket \$1
- Sheet of 24 Tickets \$20
- **ADVANCED** Sheet of 24 tickets \$15
- Carnival POP (Pay One Price)
Unlimited wristband-1-person, 1 day \$30
- **ADVANCED POP** (sales through 8/19) \$25
- Golden Ticket*: unlimited wristband-1 person,
10 days, and 32 oz. souvenir cup \$150

Golden Ticket pre-sale purchase only.*NOT available for purchase on-site.**

Overnight Fair guests, exhibitors, or vendor/concessionaires must have a valid entry ticket, by 8 am each morning before Fair opening. A daily stamp will be maintained at all gates for patrons wishing to return within the day. **Tickets are single use, one scan per entry. Valid hand stamp required for re-entry.**



Presented by:

**GRANDSTAND EVENTS**

Presale Grandstand event tickets available for purchase online or at the Fair Office. Guests are encouraged to purchase in advance due to limited seating capacity. Onsite tickets may be available for purchase at the Findlay Arena Box Office on a first come, first serve basis.

Grandstand events are rain or shine. No rain checks, refunds, or tickets exchanges. All sales are final.

*Pre-sale grandstand event tickets include fair admission

August 20, 2021 – Monster Trucks - 6:30 PM

Grandstands or Lower Bleachers (1-8)	\$20
Floor Bleachers Sections 9-14	\$13

August 21, 2021 – Monster & Moto - 6:30 PM

Grandstands or Lower Bleachers (1-8)	\$20
Floor Bleachers Sections 9-14	\$13

August 22, 2021 – Demo Derby - 6:30 PM

Grandstands or Lower Bleachers (1-8)	\$20
Floor Bleachers Sections 9-14	\$13

August 23, 2021 - NELLY - 7:30 PM

PIT	\$60
Arena Floor (Standing Room Only)	\$45
Reserved Grandstands (1-5)	\$35
Lower GS Bleacher (6-8)	\$35

August 24, 2021 - Chris Janson - 7:30 PM

PIT	\$60
Arena Floor (Standing Room Only)	\$45
Reserved Grandstands (1-5)	\$35
Lower GS Bleacher (6-8)	\$35

August 25, 2021 – Draft Horse Pull - 6:30 PM

Grandstands or Lower Bleachers	Free
Floor Bleachers	Free

August 26, 2021 - Xtreme Bulls - 6:30 PM

Grandstands or Lower Bleachers (1-8)	\$20
Floor Bleachers Sections 9-14	\$13

August 27, 2021 - Friday PRCA Rodeo - 6:30 PM

Grandstands or Lower Bleachers (1-8)	\$20
Floor Bleachers Sections 9-14	\$13

August 28, 2021 - Saturday PRCA Rodeo - 6:30 PM

Grandstands or Lower Bleachers (1-8)	\$20
Floor Bleachers Sections 9-14	\$13

August 29, 2021 - Sunday PRCA Rodeo - 1:30 PM

Grandstands (1-5)	\$14
ALL Bleachers	FREE

August 29, 2021 - Demolition Derby - 6:30 PM

Grandstands or Lower Bleachers (1-8)	\$20
Floor Bleachers Sections 9-14	\$13

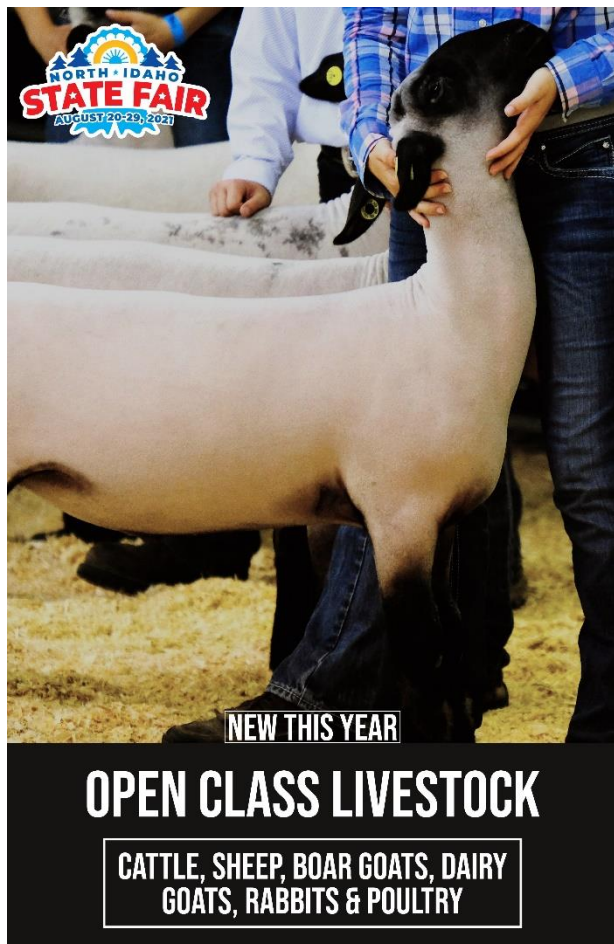
GENERAL INFORMATION:

- Smoking is only allowed in designated areas. NO EXCEPTIONS
- **NO PETS OF ANY KIND ARE PERMITTED AT THE FAIR AT ANY TIME!** This includes dogs, cats, ferrets, etc., on a leash, in a carrier, purse or large bag, or held in a person's arms. The only exceptions are service animals or animals that are part of an attraction, exhibit or demonstration. Visitors found with pets will be asked to take them home. Animals are not to be left in unattended vehicles in the parking lot under any circumstance. This policy is in place not only for the safety of other visitors, but for the welfare of the animal.
- Soliciting on the Fairgrounds, distribution of hand bills, literature, or advertising by any individual or organization is strictly prohibited. No tacking or posting of advertising bills, cards, etc., will be permitted on any building, power pole, car or elsewhere. All individuals, organizations, religious groups, and commercial exhibitors wishing to solicit, pass out literature or advertising matter must rent exhibit space at the going rate and must confine solicitations, distribution of all hand bills and literature to the space rented. No walking exhibits will be allowed on the grounds.

COMPLETE COPY OF ALL FAIRGROUNDS POLICIES IS AVAILABLE AT THE FAIR OFFICE

BANK SERVICES:

ATM's are available at each admission gate, north end of the grandstands, food court, Buildings 1, 4 and at the carnival. The Fair does not have a check cashing service.



CONTENTS

How and When to Enter 4

What's New in Open Class 4

General Rules..... 4

Livestock Rules..... 5

Frequently Asked Questions 6

Competitive Exhibits Award Listing 9

Open Class Static Exhibits Calendar 10

Open Class Livestock Calendar 11

Vintage Agricultural Equipment & Entry Form 12

Fruits, Nuts, & Edible Herbs 14

Honey..... 18

Vegetables & Field Crops 20

Flowers..... 23

Culinary Arts 30

Sewing..... 40

Knitting..... 42

Crocheting..... 44

Hand Woven & Hand Spun Articles 46

Quilts..... 48

Needlework 51

General Crafts 53

Industrial Arts 58

Literary Arts 60

Fine Arts..... 62

Photography 64

Draft Horses 66

Poultry 67

Rabbits 69

Boer Goats 71

Dairy Goats 72

Sheep 74

Cattle..... 75

Open Horse Show 76

4-H Rules and Departments 78

First Time Youth Exhibitor Grant 88

Entry Forms (Livestock and Static Exhibits) 89

Exhibit Building Map..... 96

ENTRY DEADLINES

Online: Monday, August 2, 2021

Entry Days:

- Quilts: Thursday, August 5, 2 pm – 7 pm
 - Non-perishables: Monday & Tuesday, August 9 or 10, 2pm – 7 pm
 - Culinary perishables: Wednesday, August 18, 12 pm – 7 pm
 - Fruits & Vegetables: Thursday, August 19, 7am – 12 pm
Thursday, August 19, 1 pm – 7 pm
 - Flowers: Thursday, August 19, 7 am – 12 pm
Wednesday, August 25, 7 am – 10 am
- Enter **B Gate** on Government Way



EASY TO ENTER!

THREE WAYS TO ENTER YOUR EXHIBITS!

- 1) Register online at www.NISFair.fun by August 2
- 2) Complete and submit an Entry Registration Form by Aug. 5
- 3) Bring ALL your exhibits in on their designated entry day, same day registration.

If you have any questions, please call the Fair Office at 208-765-4969, 8:30 am - 4:30 pm Monday through Friday. We are happy to assist you in entering your exhibit into the fair!

- **Register online** by August 2. Go to www.NISFair.fun and you will find all departments within the Exhibits tab. Click on the link to enter exhibits. Each exhibitor must have their own account, and renew each year. Create an entry for each item that you plan to exhibit, repeating until finished. You can always go back into your account to make changes or additions. If you are unsure of what class to enter please contact your Department Superintendent to verify you are entering the correct class.
- **Complete and submit a paper Entry Registration Form** before August 5. You can find the form online, in the Exhibitor's Handbook or stop by the Fair Office.
- **Bring ALL your exhibits in on their designated entry day.** Entry days are listed by department, on the entry form, online, and for your convenience listed under Entry Deadlines. Departments 1, 18, 19, 20, 21, 22, 23 & 24 must pre-register, **no day-of entry**; all other departments allow day-of entry.

If you cannot enter online or physically fill out a form, please make an appointment to register in the Fair Office by July 23.

WHAT'S NEW THIS YEAR

- **Open Class Livestock:** We are thrilled after many year to bring back open class livestock to the North Idaho State Fair. With a 10 day format we now have the ability to offer new departments for cattle, sheep, dairy goats, boer goats, sheep, poultry and rabbits. Many of these are sanctioned events. Entry fees and premiums vary by species, see department and livestock rules for more information.
- **Premiums:** Static exhibit premiums have been increased as follows, \$15.00 Grand Champion, \$7.00 1st place, \$5.00 2nd place, \$3.00 3rd place. See Premium and Special Awards for complete award information.
- **Fees for static exhibits:** Exhibitors first 25 entries are subject to a \$1 fee per entry. After 25 entries, there are no additional fees. **Entry fees are charged to help offset the increased premiums.** (Example: 2 entries equal \$2, 25 entries equal \$25 while 45 entries equal \$25)
- **Youth Awards:** Youth points will now be calculated to go toward Jr. Green Thumb, Best Jr. Cook, and Premier Jr. Exhibitor.
- **Culinary:** Best Cook Award - Must enter 7 of the 10 available divisions to be eligible.
- **Art:** Professional Art Classes in Fine Arts (Department 16)
- **Anyone Can Enter:** Previously only open to residents of the Northern 10 counties in Idaho, we are now open for anyone to enter the fair. Special Awards will be offered to Idaho Residents in the northern 10 counties.
- **Various Departments:**
Find the theme logo throughout the Exhibitor's Handbook to take part in theme related Special Contests! This year's theme is the **There's Magic in the Fair!**

- The North Idaho State Fair does their best to display all entries when possible.

OPEN CLASS GENERAL RULES & REGULATIONS

EXHIBIT ENTRY

1. All open class departments, divisions and classes are open to all United States residents. Limit one (1) entry per class per exhibitor. Entries are subject to a \$1 fee per entry, for the first 25 entries. After 25 entries, there are no additional fees. For example, if you submit 30 entries, your fee will be capped at \$25.
2. Open class exhibits that require pre-registration include Dept. 1-Vintage Agricultural Equipment, Dept. 18-Draft Horses, Dept. 19-Poultry, Dept. 20-Rabbit, Dept. 21-Sheep, Dept. 22-Boer Goat, Dept. 23-Dairy Goat & Dept. 24-Cattle. All other departments allow day-of entry.
3. Entry tags will be available for pick up on Monday August 9 & Tuesday August 10 between 2 pm and 7 pm in your exhibit buildings. New entries will register at Building 1 on the specific department drop off date. To avoid waiting in line, we strongly recommend pre-registering. If you cannot enter online or physically fill out a form, please make an appointment to complete the form in the office by July 23.
4. Non-perishable exhibits drop off is Monday August 9 and Tuesday, August 10. Perishable entry drop off is Wednesday, August 18 from 12 pm – 7pm, and Thursday, August 19 from 7 am – 7 pm. For specific entry times and locations, please refer to the Open Class Static Exhibits Calendar and the calendars for each department. Times and locations vary according to department.
5. **LIMIT ONE EXHIBIT PER CLASS PER EXHIBITOR UNLESS OTHERWISE STATED.** A single exhibit cannot be entered in more than one class, nor may it be entered in both Open Class and 4-H. If one exhibitor enters more than the allowed amount for a single class, all their entries for that class will not be considered for placings.
6. Allotment of space and management of each department will be in the hands of the Superintendent. ***New classes for exhibits not shown in the Exhibitors Handbook will NOT be added.*** Superintendents have the right to refuse any soiled or distasteful entries.
7. Any article entered for the premium award must be entered in the name of the producer.
8. **USE ONE NAME ONLY ON ALL ENTRY TAGS. DO NOT USE VARIATIONS OF YOUR NAME,** such as your full name on one tag and a nickname on another tag. We cannot and will not assume that all the names you use on your tags belong to you. PLEASE NOTE THAT CORRECTIONS WILL NOT BE MADE AFTER ENTRIES ARE TAKEN. POINTS WILL BE CALCULATED ACCORDING TO THE NAME ON THE ENTRY TAG.
9. The "Professional" division is no longer offered except in Culinary Arts in specific divisions. Anyone who refers to themselves as a professional can enter under the Adult division unless otherwise stated in the Department rules.
10. **Fair Management will provide attendants/security and take all possible precautions for the safe preservation of all articles on display as well as persons attending the Fair. Fair Management will not be responsible for loss, damage, or injury to any property or person.**

AWARDS (also see Award Listing):

11. All exhibitors are eligible for standard awards and premium payouts. Special Awards will only be paid to residents of the northern 10 counties of Idaho. **The possession of ribbons and exhibit cards does not entitle the holder to awards.** The awards on exhibits are paid only on the record of awards returned to the Fair Office by the Superintendents.
12. Individual exhibits are limited to one cash award in any one class.
13. The American System is used, and decisions of the judges are final. Judges choose (1) first, (1) second, and (1) third place winner in each class; however, the judges reserve the option to withhold ribbons and awards in a class where there is no deserving entry. Disrespect shown to any award or to any judge by an exhibitor forfeits all awards made to him/her. Violation of any of the rules listed will cause the exhibitor to forfeit all awards.
14. Grand Champion awards are presented to the "Best" entries in each department. "Best" is defined as "that which demonstrates the best technique, skill or animal in the eyes of the judge".
15. Special Premium awards are sponsored by local businesses and individuals. A first and second place is awarded to entries that the judges determine warrant special recognition. Special Awards and premiums will only be paid to residents of the northern 10 counties of Idaho.
16. Open class cash awards will be available for pickup on Saturday, August 28 from 12 pm to 4 pm and Sunday, August 29 from 12 pm to 4 pm at the south end of Building 8. Beginning Monday, August 30 awards are paid at the Fair Office. Hours are as follows; Monday 3 pm – 7 pm, Tuesday through Friday September 3, 9 am – 4 pm. Exhibit awards are only paid to the entry record returned to the Fair Office by department Superintendents. **Award premiums not claimed by September 3, will be considered a donation to the Fair's general fund.**
17. All protests must be in writing and accompanied by a deposit of \$25, which will be forfeited if the protest is not sustained. Protests must state plainly the case of the complaint or appeal and must be delivered to the Fair Manager within six hours after the cause of protest.

EXHIBIT REMOVAL

Open Class exhibits cannot be, under any circumstance, removed from the buildings until Monday, August 31 between 3 and 7 pm. Removal of exhibits is not allowed, any violation of this rule will be banned from future exhibiting. Exhibits may be moved to the Fair Office on Tuesday, August 31 and can be picked up from 9 am to 4 pm. All exhibitors must have item's claim ticket to pick up. Exhibits will be held at the Fair office until September 15, 2021. Items not picked up will be disposed of without notice.

OPEN CLASS LIVESTOCK RULES & REGULATIONS

1. All entries are taken on a first come, first served basis, Cattle, Sheep, and Goats must include the \$5 per animal entry fee, \$3 entry in group classes (for group classes in dairy goats 3 animals is considered one entry).
2. Poultry and Rabbits will have a \$2.50 entry fee.
3. Exhibitors are responsible for entering animals in proper department, division and class. Incorrect entries may opt to pay an additional \$5 per animal processing fee to correct inaccurate entries or withdraw that entry from the show. Exhibitors limited to only one entry per class.
4. All animals must be stalled in the designated barn
5. Only exhibitors, ring steward, superintendents and judges are allowed in the Show Ring.
6. The decision of the judge is final.
7. Entry fees are non-refundable and non-transferable.
8. Fair management or superintendents reserves the right to refuse acceptance of any entry based on health. Animals will be inspected upon arrival by the superintendent and/or veterinarian and have registration papers checked. Please note if the exhibitor wishes to dispute the management or superintendent's decision, they may opt for another veterinarian inspection and signed clearance at the cost of the exhibitors. Fair Veterinarian's decision supersedes all others.
9. Any exhibitor that removes an entry from the grounds prior to the published release time, without written authorization from Fair management will be banned from future exhibiting at the North Idaho State Fair and forfeit all prize money.
10. Open Class livestock and small animals will not be permitted to have "For Sale" signs on pens.
11. Exhibitors shall furnish hay and other feeds at his/her own expense. Shavings will be provided. All barns/cages are to be cleaned by 9 am each day and maintained throughout the day.
12. The use of any unauthorized drugs/tranquilizers is strictly prohibited; withdrawal times for licensed products must be followed. All animals entered in the North Idaho State Fair are subject to testing. Should a violation be suspected, all cash proceeds will be held until this issue is resolved. A confirmed violation may result in forfeiture of premiums, sale proceeds and/or future participation in Open Class Animal Departments. The participant is on notice that the unauthorized use of drugs/tranquilizers may be a violation of state and/or federal statutes, and that the above sanctions by the Fair Board do not circumvent the prosecution of any individual violating state and/or federal laws.



FREQUENTLY ASKED QUESTIONS

Who can enter exhibits?

All open class departments, divisions and classes are open to all United States residents. Special Awards and premiums are reserved for North Idaho residents. Limit one (1) entry per class per exhibitor. Entries are subject to a \$1 fee per entry, for the first 25 entries. After 25 entries, there are no additional fees.

How do I register my entries?

THERE ARE THREE WAYS TO ENTER YOUR EXHIBITS!

- 4) Register online at www.NISFair.fun before Aug 2.
- 5) Complete and submit an Entry Registration Form by Aug 5.
- 6) Bring ALL your exhibits in on their designated entry day. Same day registration will be available as needed.

How do I get an entry tag?

Entry tags for all registered entries will be available for pick up beginning Monday, August 9 between 2 and 7 pm in the building where your entry will be displayed. Entry tags for exhibits registered on entry day will be prepared on site.

When do I bring my entry? And where do I take it?

Entry information is shown at the beginning of each department. Check out the Open Class Competitive Exhibit Entry Schedule for dates, times and locations. **ENTRY TIMES ARE STRICTLY ENFORCED AND LATE ENTRIES ARE NOT ACCEPTED.**

Can I enter exhibits in more than one department?

Absolutely! There are twenty departments to choose from! One item can be entered in a specific class and some departments have entry limits based on available space.

I've sold things in the past. Do I enter as a PROFESSIONAL?

Department 6-Culinary offers the only specific classes for professionals, classes 363-365. Department 16-Fine Arts offers division 16B for professionals. Exhibitors who consider themselves professionals can enter in the adult division unless otherwise stated in the department's rules.

Can I win anything?

Typically, ribbons and cash premiums are given for 1st, 2nd, and 3rd place. Grand Champion and Special Premium awards are also available for specific departments. Other special awards, such as the Best Cook or Green Thumb Gardener are offered. Check each departments sheet for complete list of eligible special awards. Other special awards for residents of the northern 10 counties in Idaho and youth exhibitors.

How is my entry judged? When does it happen? Can I watch?

The North Idaho State Fair uses the American system of judging, all exhibits in the department are evaluated and judged against each other. Depending on the department, judging typically takes place the morning after or immediately after entry closes. All judging is closed to the public, with the exception of the Chocolate Extravaganza, Apple Pie Contest, and Livestock Shows.

What's the difference between the American system and the Danish system?

In the *AMERICAN* system, exhibits are ranked in the order of quality. Items are placed 1st, 2nd, and 3rd, and labeled with special awards such as Grand Champion and Best of Show, if applicable. The North Idaho State Fair's Competitive Exhibits Program uses this system.

In the *DANISH* system, exhibits are evaluated according to quality standards. Items meeting the quality standard are awarded blue ribbons. Red ribbons are given if the exhibit does not meet all the quality standards, and white ribbons are awarded if the exhibit rates only moderately satisfactory for the standards. Kootenai/Shoshone 4-H Program uses this system.

What do the judges look for when they're judging?

Each department has one or more sections entitled *What the Judges Look For* outlining basic judging criteria.

When can I see if I won anything?

When you come to the Fair! Exhibit buildings are open daily til 10 pm. Be sure to check out the discounted rates we offer for pre-sale tickets!

How do I pick-up my winnings?

Open class cash awards will be available for pickup on Saturday, August 28 from 12 pm to 6 pm and Sunday, August 29 from 12 pm to 4 pm at the South end of Building 8. Beginning, Monday August 30 awards are paid at the Fair Office. Hours are as follows; Monday 3 pm – 7 pm, Tuesday through Friday September 3, 9 am – 4 pm. Exhibit awards are only paid to the entry record returned to the Fair Office by department Superintendents. **Award premiums not claimed by September 8, will be considered a donation to the Fair's general fund.**

When can I pick up my entry?

Open Class exhibits cannot, under any circumstances, be removed from the buildings until **Monday, August 30** between **3 and 7 pm**. Remaining exhibits will be moved to the Fair Office on Tuesday, August 31 and can be picked up from 9 am to 4 pm. Exhibits will be held at the Fair office until September 15, 2021. Items not picked up will be disposed of without notice.

All exhibitors must have item's claim ticket to pick up.

Please see – **Award Listing & Premium Payout Listing** on page 9

