

Swine Division Market Hogs

Market Hog Classification

Guidelines and Rules

Market hogs will be shown by breed type.

Exhibitors will designate on the fair entry form in which breed type the market hog will be entered. Final determination of classification will be made by the swine superintendent at the Show, and they may reclassify a market hog to another division. This determination is based on visual characteristics of the market hog and the judgment of the superintendent. Official classification may be subject to protest, if protested the classification will be reviewed by the swine superintendent. The Judge reserves the right to reclassify any animals that are obviously in the wrong division.

Breed type Divisions may include Hampshire, Yorkshire, Duroc, Landrace, Chester White, Spots, Poland China, Berkshire, Hereford, Light Cross, Dark Cross, Other Cross, AOB

Overall grand champion and reserve grand champion will be selected from breed type and market hog division champions and reserve champions.

All hogs must be brought to the weigh-in area clean.

Market Hog Classification

I. Hampshire

- A. Must be black with a white belt starting on the front leg. The belt must totally encircle the body with at least white hairs touching.
- B. Must possess Hampshire Breed character (ears must be erect and not rounded).
- C. Must NOT have any white hair or indications of streaking on the forehead. White hair is allowed on the front of the snout surrounding the nostrils, but the white is not allowed to break the rim of the nose. This includes no white on tail.
- D. Must NOT have any white hair above the hocks.
- E. Must NOT have any white hair past the navel.
- F. Must NOT have any red hair.

II. Yorkshire

- A. Must be white and possess Yorkshire Breed character (ears must be erect).
- B. Must NOT have any colored hair other than white.
- C. All colored skin pigmentation combined cannot be larger than one U.S. minted ½ dollar.

III. Duroc

- A. Must be red and possess Duroc Breed character (ears must be down and medium size).
- B. Must NOT have any white hair located on the animal.
- C. All black skin pigmentation combined cannot be larger than one U.S. minted ½ dollar.
- D. Must NOT have any shading or indication of a belt.

I. Landrace

- A. Must be white and possess Landrace Breed character (ears must be down).
- B. Must NOT have any color hair other than white.
- C. Combined skin pigmentation cannot be larger than one U.S. minted ½ dollar.

II. Chester White

- A. Must possess Chester White Breed character.
- B. Must be solid white, combined skin pigmentation other than white cannot be larger than one U. S. minted ½ dollar.
- C. Ears must be down and medium size.
- D. Any signs of weighted ear tags or evidence of past existence of such ear tags are ineligible.

III. Spotted

- A. Must be black and white.
- B. Must possess Spotted Breed character.

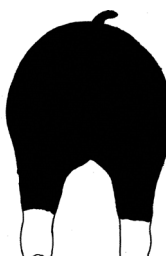
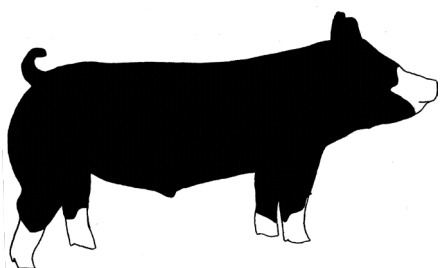
- C. Ears must not be erect.
 - D. Any red tinted or sandy brown spots are ineligible.
 - E. No solid black head from ears forward.
 - F. No distinct white belt pattern (hair or skin) encircling and extending down and onto each shoulder.
- IV. Poland China
- A. Must possess Poland China Breed character.
 - B. Must be black with six white points (face, feet and tail) with an occasional splash of white on the body. A hog may not possess more than one black leg and be determined as a Poland China. Tail docking is permissible, eliminating that white point.
 - C. Must have ears down.
 - D. Must NOT have evidence of belt formation.
 - E. Cannot have any red or sandy hair and/or pigment.
 - F. Hogs that have weighted ear tags or evidence of tampering with possible ear tags are ineligible.
- V. Berkshire
- A. Must be black and white hog with erect ears exhibiting Berkshire Breed character.
 - B. Must have white on all four legs, face, and tail (unless tail is docked).
 - C. Must NOT have a solid white or a solid black face from the ears forward.
 - D. Must NOT have a solid black nose (rim of nose).
 - E. White is allowed on the ears, but NO solid white may appear on the ears.
 - F. One occasional splash of white may appear only on the lower one-half of the body.
- VI. Hereford:
- A. 2/3 of the body must be red and no more than one third white hair (except for the head and feet).
 - B. Must not have evidence of a white belt.
 - C. Must have white on face, ears, and at least two feet.
 - D. White on feet must extend at least one inch above the hoof.
 - E. No Swirled hair patterns.
- VII. AOB (Any Other Breed)
- A. All breeds of pigs listed above that do not have 8 or more entries will be entered in the AOB division.
 - B. Any breed of pig not listed in the above classifications yet meets a recognized pig breed.
 - C. All breeds of pigs listed above but not meeting the qualifications.
- VIII. Light Cross:
- A. Any pigs with white and/or blue only.
- IX. Dark Cross/Other Cross:
- A. All other colors (i.e., black, red, and sandy).
 - B. Excluding solid white or blue.

NOTE: These Market Hog Classification criteria are based on the National Swine Registry Barrow Show Classification Guidelines with a few modifications. A cross is any hog not meeting any of the aforementioned criteria.

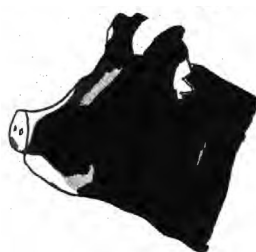
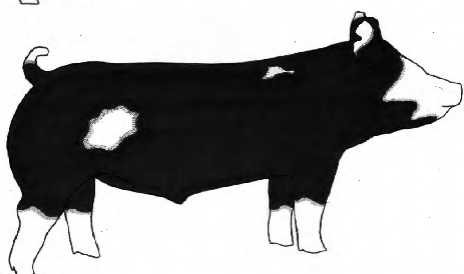
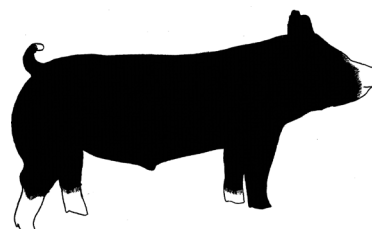
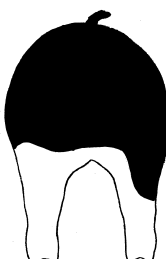
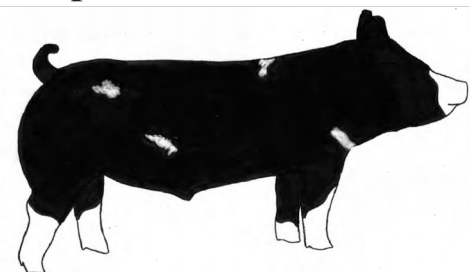
Berkshire

Breed Classification Guidelines

Ideal:



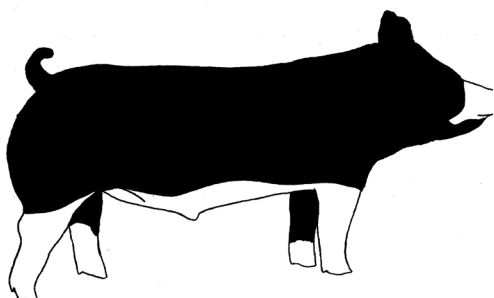
Acceptable:



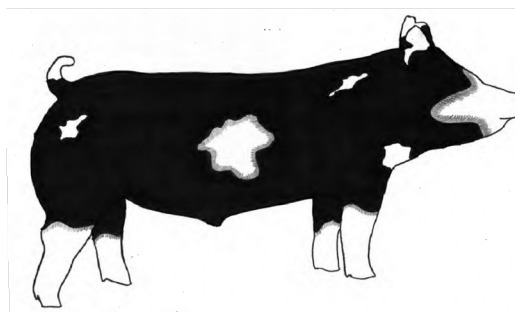
Three of the four legs/feet must be white.

An occasional splash of white skin/hair may appear on the body.

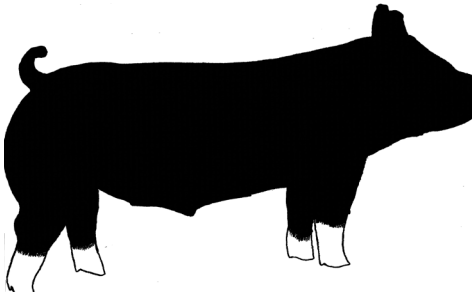
Discriminatory:



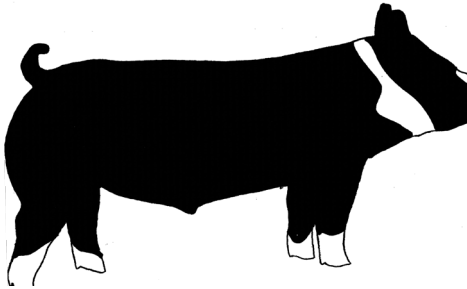
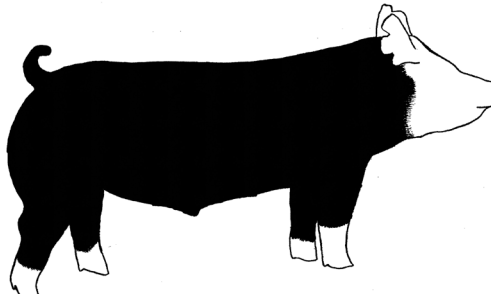
Moderate amount of white skin splashes.



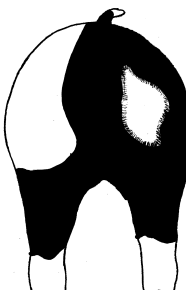
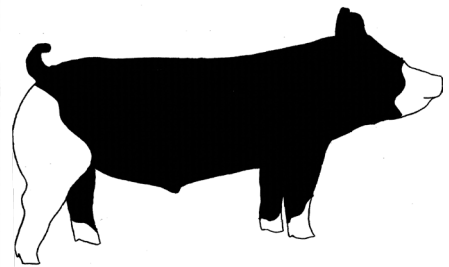
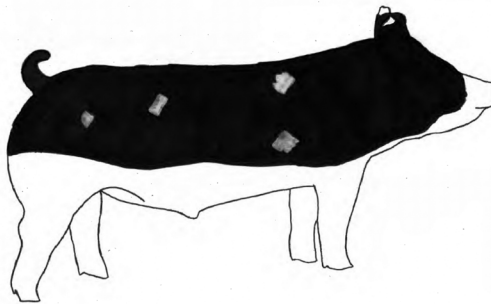
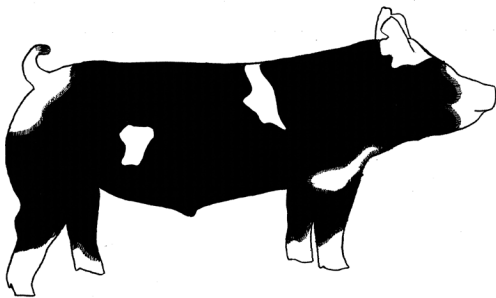
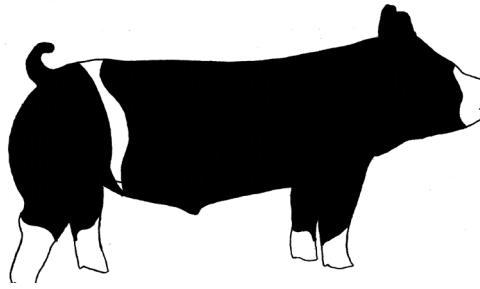
Absolute Disqualification:



Solid white or solid black face from the base of the ear forward.

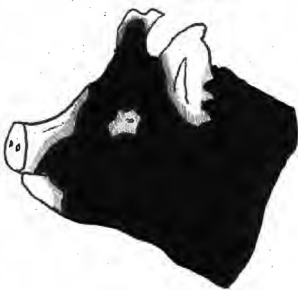


White skin or hair that continuously encircles the body anywhere between the base of the ear and the base of the tail.



Excessive white on the body.

- Full coverage of white coming up the lower one-third of the body (not including legs) that extends from the base of the jaw through sternum and lower body through seam of the ham.
- White splash extends from rear leg to upper hip.



Solid white ear.



Solid black nose (white does not break the rim of the nose).



Lacking Berkshire breed character with regards to skull shape and ear shape.

chester white

Ideal:



Discriminatory:



Absolute Disqualification:



Duroc

Ideal:



Discriminatory:

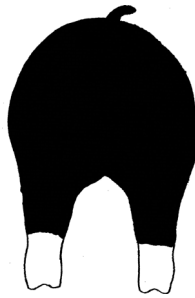
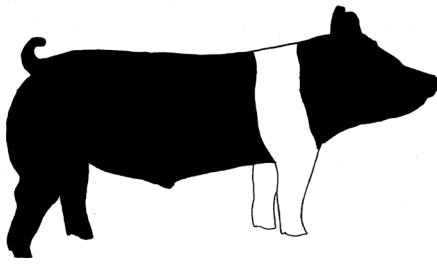


Absolute Disqualification:

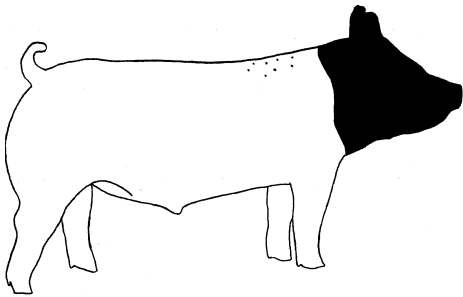


Hampshire

Ideal:

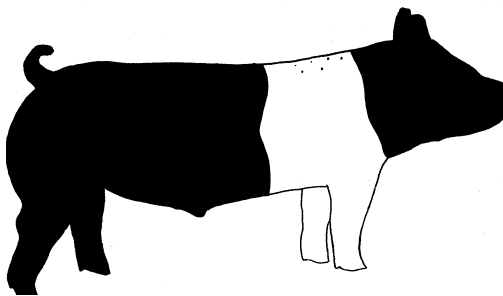
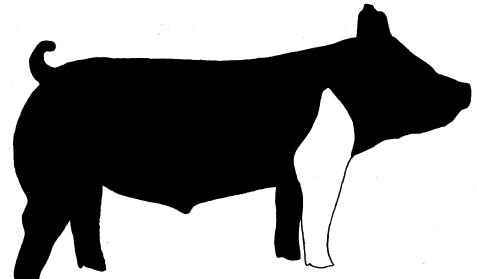


Acceptable:



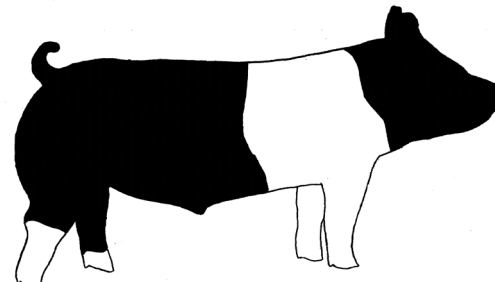
Black head with a white body, with evidence of pigment and freckling down the top.

White belt starting on a front foot/leg; belt partially encircles body extending to at least the chest floor (half belt).

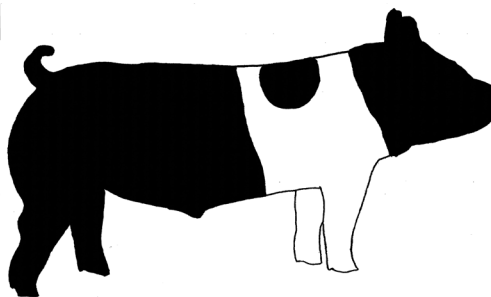


Freckling in the belt.

White on rear leg is below the base of the ham.

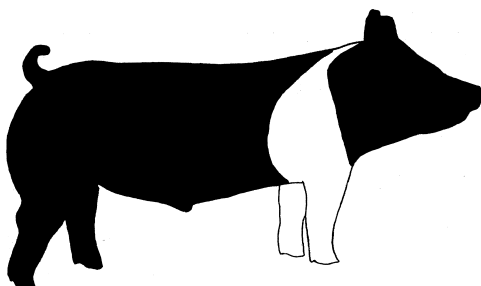
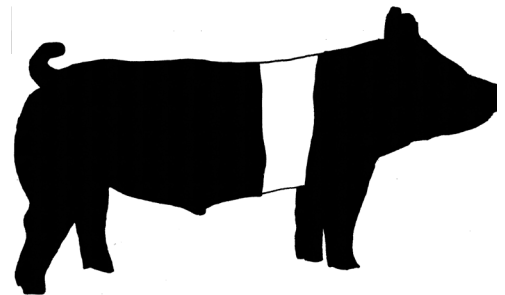


Discriminatory:

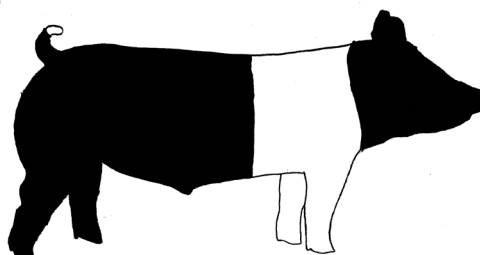


Large spots within the belt.

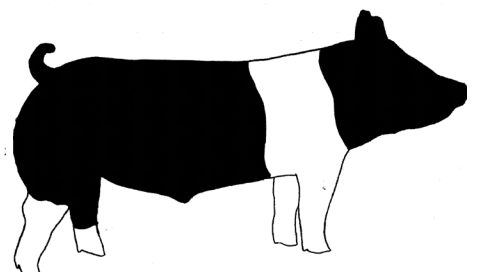
Belt is in front of or behind a solid black front leg.



If belt v's and progresses towards the poll (base of the ear).



White tip on tail, if docked.



White on rear leg extends to the base of the ham.

Absolute Disqualification:



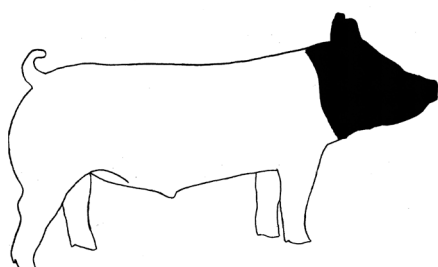
Streaking or evidence of white on forehead.



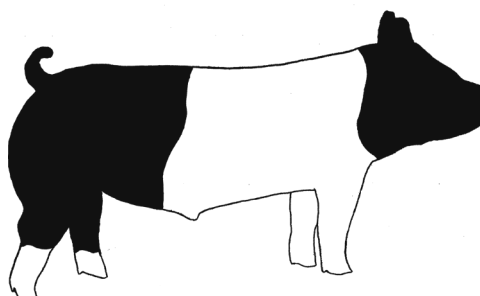
White skin extends over the rim of the nose.



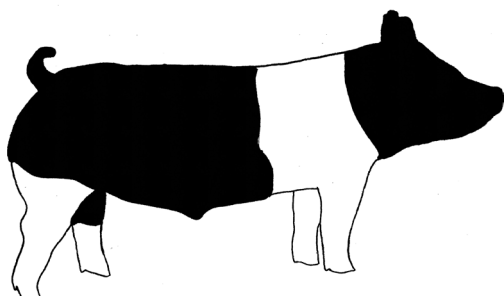
White under the chin cannot exceed what a U.S. minted quarter will cover.



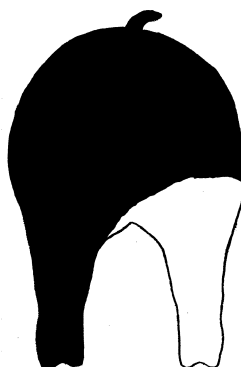
Black head with a white body without freckles or pigmentation.



Belt extends past the sheath (sheath must be black).



White on rear leg extends above the base of the ham.



landrace

Ideal:



Discriminatory:

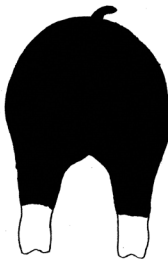
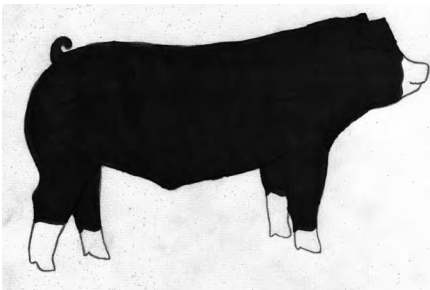


Absolute Disqualification:

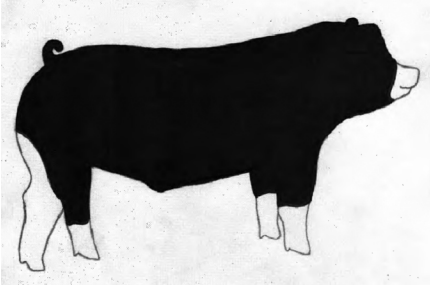


Poland China

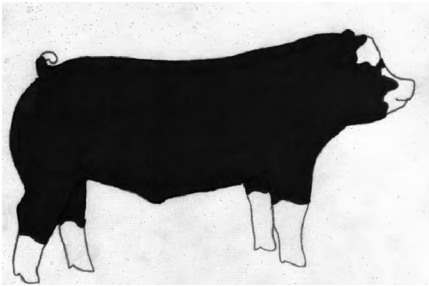
Ideal:



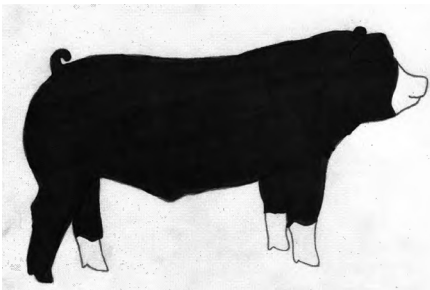
Acceptable:



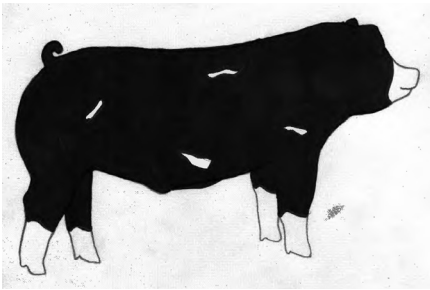
A slight continuation of white from the legs to the body.



Ear may have white on it.

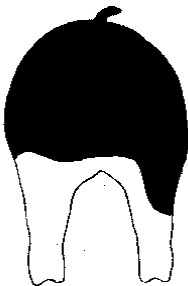
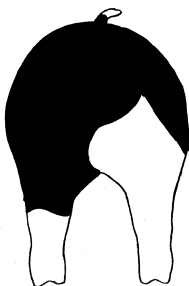
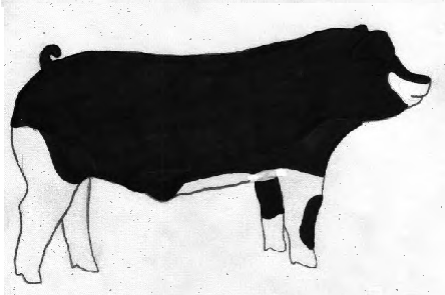
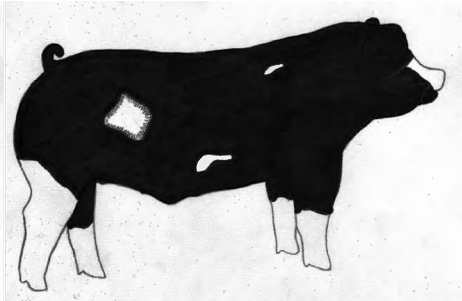
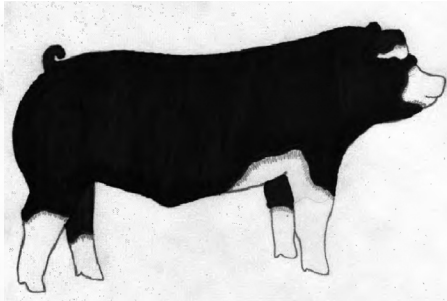
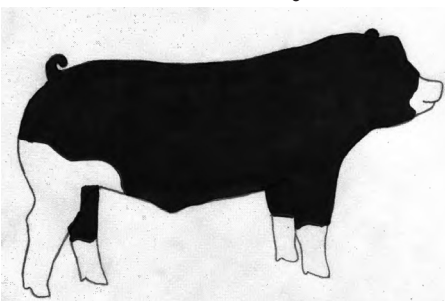


Three of the four legs must be white.



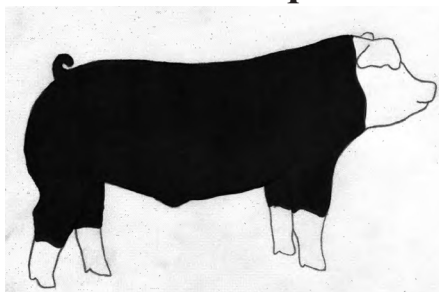
May have an occasional splash of white on the body.

Discriminatory:

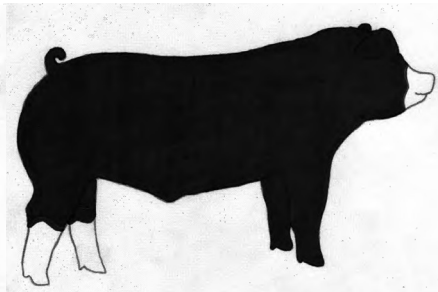
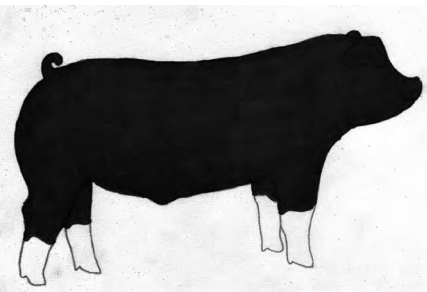


A moderate continuation of white from the legs to the body or moderate freestanding white, not attached to a leg.

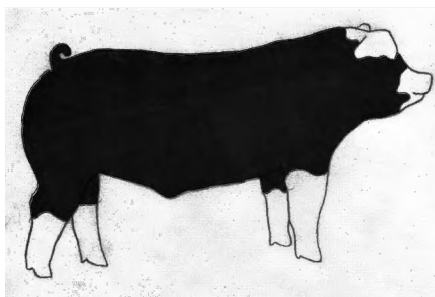
Absolute Disqualification:



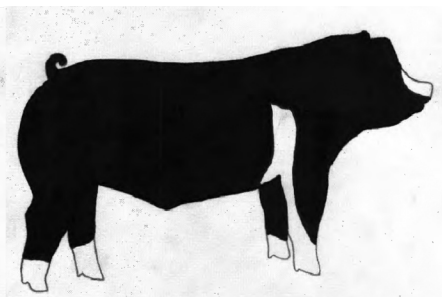
Solid white or solid black face.



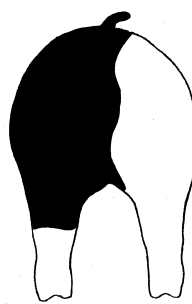
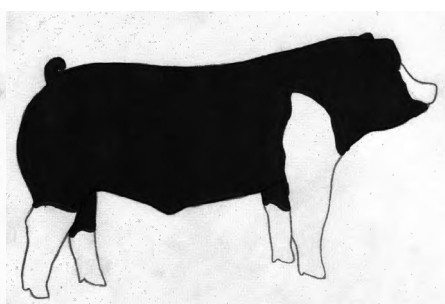
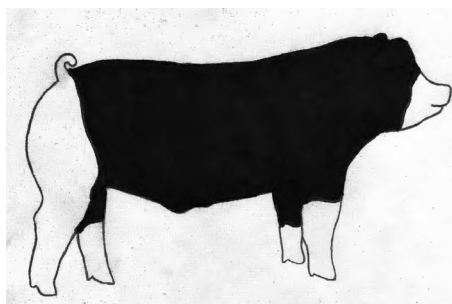
More than one solid black leg.



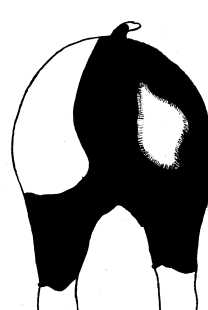
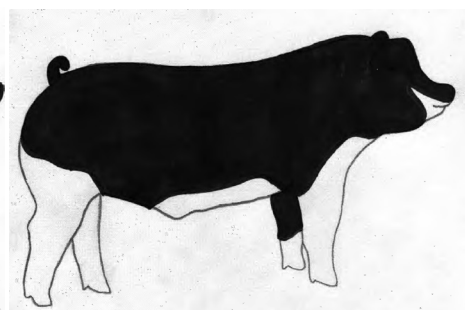
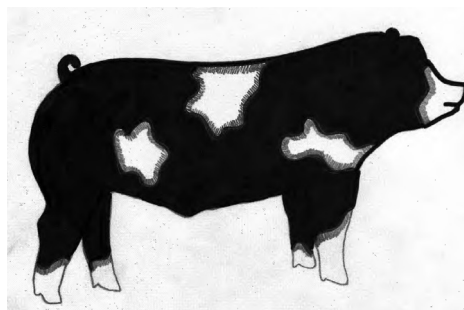
If the white on a solid white ear goes past the base of the ear.



Evidence of belt formation.



An excessive continuation of white from the legs, encompassing the upper hip or shoulder.



Excessive freestanding white, not attached to a leg.

Poland China & Spotted Ideal:



Discriminatory:

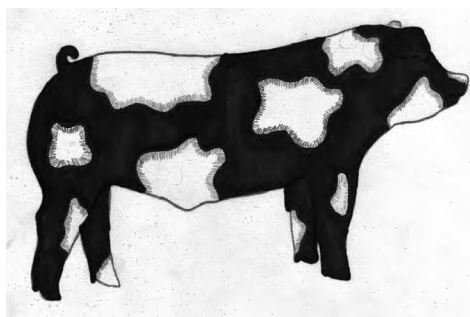
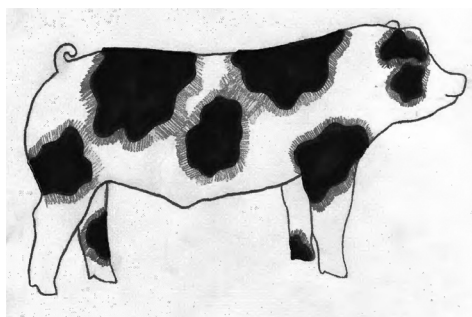


Absolute Disqualification:

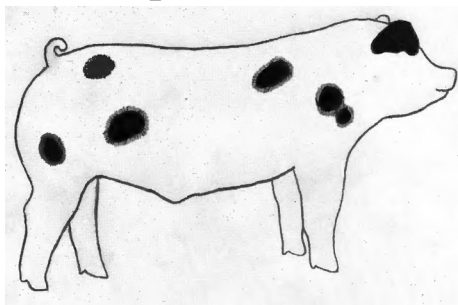


Spotted

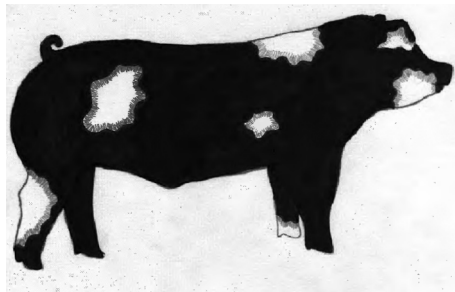
Ideal:



Acceptable:

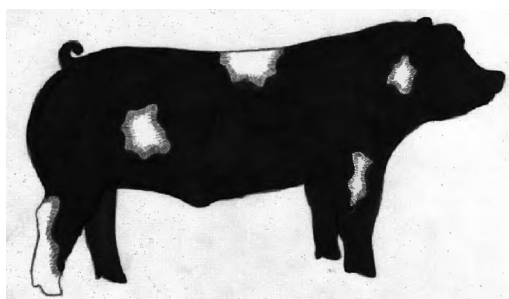


Predominantly white with
black spots.

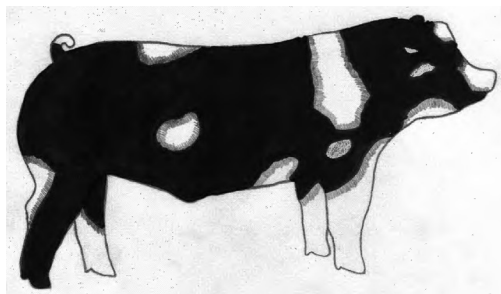


Predominantly black with
white spots.

Absolute Disqualification:



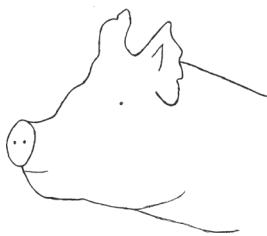
Solid black head from
base of ears forward.



Distinct white belt pattern (hair
or skin) encircling and extending
down and onto each shoulder.

Yorkshire:

Ideal:



Discriminatory:



Absolute Disqualification:

