



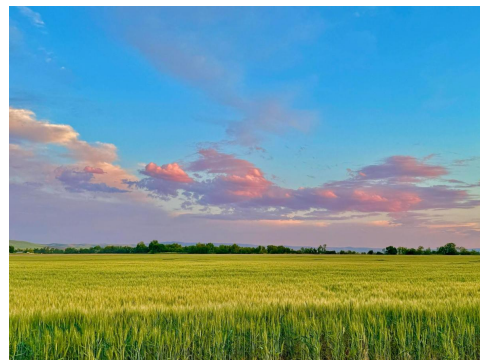
JULY CROP REPORT

July Status: Oregon Wheat

The crop began to turn quickly in June with warm weather. The moisture base in the soil helped support much of the winter wheat crop during higher temperatures, but the spring wheat crop faced challenges. With the warm temperatures accelerating the crop development, a few wheat producers have just started to get in the field. Oregon wheat harvest is therefore officially underway, but it will take a few weeks for much of the state to be fully in harvest.



Soft white winter wheat in south Wasco County on June 8, 2025. Photo Credit: Josh Duling.



Soft white winter wheat in Umatilla County on June 21, 2025. Photo Credit: Ryan McLaughlin



Soft white winter wheat in Wasco County on June 12, 2025. Photo Credit: Josh Duling.



Soft white winter wheat in Morrow County on June 23, 2025. Photo credit: Erin Hansell-Heideman.



Soft white winter wheat in Union County on June 29, 2025. Photo Credit: Wade Bingaman.

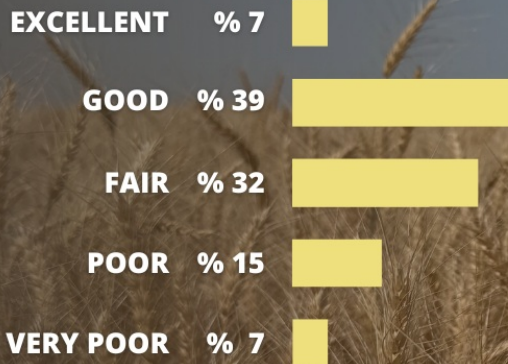


Soft white winter wheat in Malheur County on July 1, 2025. Photo Credit: Dana Tuckness.

Crop Condition Rating

OREGON WINTER WHEAT CROP CONDITIONS

Week Ending June 29, 2025



**OREGON
WHEAT**

Crop condition rating estimates are provided by the U.S. Department of Agriculture National Ag Statistic Service.

