



MAY CROP REPORT

May 2026 Crop Status: Oregon Wheat

Oregon winter wheat plantings were steady and level with last year, at roughly 300,000 hectares planted. The crop benefitted from an unusually mild winter, as well as good soil moisture base, leading to strong germination and establishment. The mild winter temperatures have caused higher disease pressures in susceptible varieties, however. Spring field work and planting was slightly earlier than average given warmer temperatures.

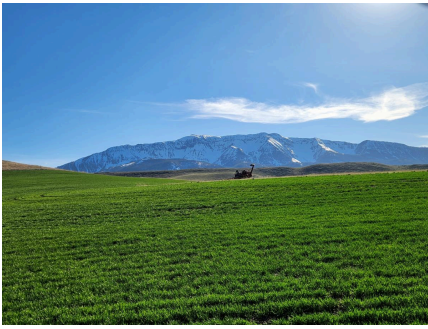
The crop remains in very good condition, but will be dependent on moisture throughout the remainder of the growing season. With below-average snowpack and tracking the drought monitor, precipitation over the next month is necessary to determine final crop development.



Union County on March 19, 2026. Photo credit: Wade Bingaman.



Benton County on April 19, 2026. Photo credit: Mike and Laurie Schrock.



Wallowa County on April 13, 2026. Photo Credit: Kurt Melville.



Irrigated soft white winter wheat in Malheur County on May 1, 2026. Photo Credit: Dana Tuckness.



Dryland soft white winter wheat in Sherman County on May 1, 2026. Photo Credit: Josh Macnab.



Winter barley in Linn County on May 1, 2026. Photo Credit: Telly Wirth

Crop Condition Rating

**OREGON
WHEAT**

**WINTER WHEAT
CROP CONDITIONS**

EXCELLENT

22%

GOOD

36%

FAIR

27%

POOR

8%

VERY POOR

7%

Week Ending May 3, 2026

Crop condition rating estimates are provided by the U.S. Department of Agriculture National Ag Statistic Service.





Oregon Wheat Growers League | 115 SE 8th St. | Pendleton, OR 97801 US

[Unsubscribe](#) | [Update Profile](#) | [Constant Contact Data Notice](#)



Try email marketing for free today!